



HAL
open science

Coupling a distributed grid based hydrological model and MM5 meteorological model for flooding alert mapping

B. Tomassetti, E. Coppola, M. Verdecchia, G. Visconti

► **To cite this version:**

B. Tomassetti, E. Coppola, M. Verdecchia, G. Visconti. Coupling a distributed grid based hydrological model and MM5 meteorological model for flooding alert mapping. *Advances in Geosciences*, 2005, 2, pp.59-63. hal-00296835

HAL Id: hal-00296835

<https://hal.science/hal-00296835>

Submitted on 18 Jun 2008

HAL is a multi-disciplinary open access archive for the deposit and dissemination of scientific research documents, whether they are published or not. The documents may come from teaching and research institutions in France or abroad, or from public or private research centers.

L'archive ouverte pluridisciplinaire **HAL**, est destinée au dépôt et à la diffusion de documents scientifiques de niveau recherche, publiés ou non, émanant des établissements d'enseignement et de recherche français ou étrangers, des laboratoires publics ou privés.

Coupling a distributed grid based hydrological model and MM5 meteorological model for flooding alert mapping

B. Tomassetti, E. Coppola, M. Verdecchia, and G. Visconti

Centro di Eccellenza CETEMPS, Università dell'Aquila, Italy

Received: 29 October 2004 – Revised: 8 February 2005 – Accepted: 16 February 2005 – Published: 29 March 2005

Abstract. The increased number of extreme rainfall events seems to be one of the common feature of climate change signal all over the world (Easterlin et al., 2000; Meehl et al., 2000). In the last few years a large number of floods caused by extreme meteorological events has been observed over the river basins of Mediterranean area and they mainly affected small basins (few hundreds until few thousands of square kilometres of drainage area). A strategic goal of applied meteorology is now to try to predict with high spatial resolution the segments of drainage network where floods may occur. A possible way to reach this aim is the coupling of meteorological mesoscale model with high resolution hydrological model. In this work few case studies of observed floods in the Italian Mediterranean area will be presented. It is shown how a distributed hydrological model, using the precipitation fields predicted by MM5 meteorological model, is able to highlight the area where the major floods may occur.

1 Introduction

In the Center of Excellence for the Integration of Remote Sensing Techniques and Numerical Modelling for the Forecast of Severe Weather (CETEMPS) of the University of L'Aquila the MM5 PSU/NCAR (mesoscale Model 5 of Pennsylvania State University/National Center for Atmospheric Research) has been made operational since 1999. The horizontal resolution of the model (3 Km) is comparable to typical resolution of hydrological model and then the predicted rainfall fields are suitable to be used as input for hydrological modelling (Wilby et al., 1997).

Within the activities of the Center, a distributed hydrological model has also been developed; one of the main characteristics of the model is the possibility to rebuilt the rainfall field on the model grid, acquiring and merging observed and simulated data. The final goal is to be able to predict

flow discharge on a given domain, making simulation that span from few days in the past until few days in the future. For the past time step all the available observational data are used, for example rain gauge measurements, radar and satellite estimation, while for the future time step the precipitation field is rebuilt on hourly base using the meteorological model forecast.

Cetemps HYdrological Model (CHYM) is now being calibrated in order to reproduce the observed flow discharge time series. Here we described a first application tool based on the flow-scheme calculated by the model that is able to produce an alarm map of the simulated domain. We show as, in all the simulated case studies, the tool is able to highlight the segment of the drainage network where floods actually occurred.

In the next two sections a short description of MM5 and CHYM models are given and in Sect. 4 the proposed alarm index is described. In the last section the practical application of the alarm hydrological mapping tool is described and it is shown how it allows to well detect the areas where important floods actually occurred.

2 MM5 model

For this study meteorological simulation are carried out using the non hydrostatic version of MM5 Mesoscale Model from NCAR/PSU (Dudhia, 1993 and Grell et al., 1994). The model explicitly solves the primitive equations and includes a multiple two-way nest capability. For all the simulation discussed here MM5 configuration is the same used for operational activities of CETEMPS group: it uses 24 sigma levels not equally spaced, MRF parameterization for planetary boundary layer (Troen and Mahrt, 1986) and Kain-Fritsch cumulus convection parameterization associated to an explicit configuration of cloud water and rain (Kain and Fritsch, 1993). For the present study simulations are carried out using three nested domains with respectively 27, 9 and 3 km of resolution and innermost higher resolution domain is centred for

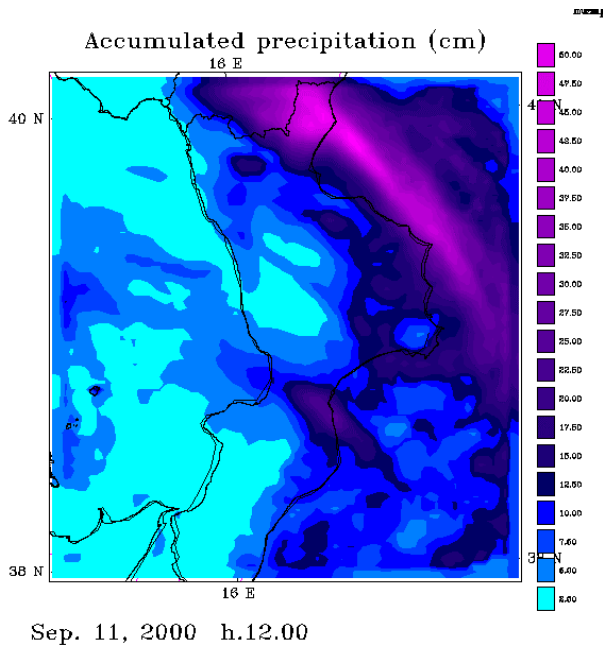


Fig. 1. MM5 simulation for 9–10 September 2000: two-day accumulated precipitation (cm) for the Soverato case.

all the case studies in the zone where flood events occurred. All the simulation are driven using ECMWF (European Center for Medium-range Weather Forecast) global analyses and forecast and Boundary Conditions are upgraded every 6 h. Figure 1 shows the 48 h accumulated rain as predicted by the model for one of three case studies discussed in the last section.

3 CHYM model

The Cetemps HYdrological Model is a grid based distributed Model that can be run in any geographical domain and with any resolution up to the resolution of the implemented Digital Elevation Model (DEM), i.e. about 300 m; for operational purpose the capability to simulate an arbitrary domain corresponds to the need to run the model for those river basins that are more stressed by the current meteorological events. CHYM model simulates the hydrological processes using an approach similar to other models (Todini et al., 2002; Borah et al., 2002) and the calibration of the model to realistically simulate the flow discharge for the Central Italy is still in progress. A complete description of the model (Coppola et al., 2003; Tomassetti et al., 2003, Coppola et al., 2005¹) is beyond the scope of this paper and we quickly describe here only a couple of aspects that are important for the application described in this paper.

¹ Coppola, E., Tomassetti, B., Verdecchia, M., Visconti G.: CHYM – A grid-based hydrological model: description of algorithms for determination of drainage structure and combination of simulated and observed rainfall data, in preparation, 2005.

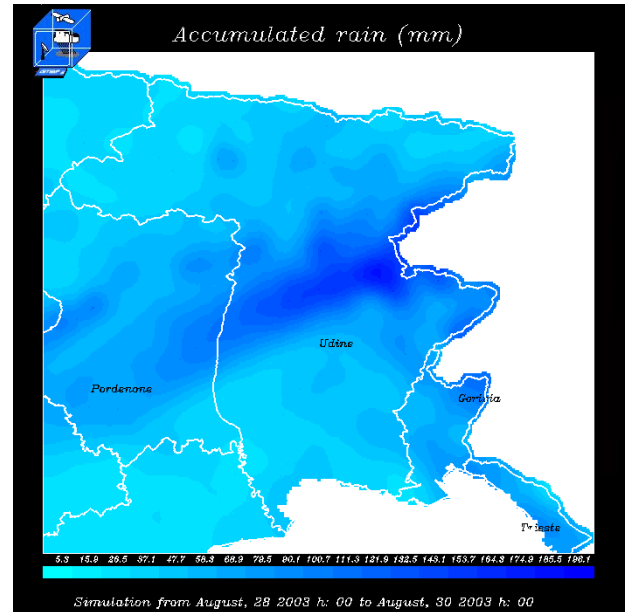


Fig. 2. Accumulated rain field as assimilated by CHYM model for the Val Canale event.

The architectural characteristics of model have been designed to assimilate different data sources for the estimation of rainfall field on the model grid. For the operational activities rainfall is estimated on CHYM grid at hourly time step using observed data for the past and meteorological model simulation for the future. The observed data are taken from a rain gauge network operating in the Central Italy and also rain estimation are obtained using radar measurements and infrared signal from geostationary satellite platform. When different data sources are available at same time step, these are assimilated with different priorities using a Cellular Automata based algorithm quickly described in the following. An example of assimilation of MM5 predicted rainfall is shown in Fig. 2.

Starting from the DEM matrix for each cell is defined the flow direction. According to the minimum energy principle the flow direction is assumed that for which the slope is maximum, this corresponds to the assumption that flow occurs with a strong preferential direction. Due to the finite resolution of the DEM few singularities are usually found for those cells for which it is not possible to coherently establish the flow direction. In order to solve these singularities, a Cellular Automata based algorithm is used for smoothing the DEM: the height of those cells where flow direction has been already calculated is taken fixed and is slightly smoothed for the other cells; the smoothing is established according to the average height of surrounding cells. The algorithm is iterated until the flow direction is established for each grid point. Despite the final goal is the real time flood forecasting on the simulated domain, a first operational version of the model allows to obtain a sort of flood alarm index using only the flow scheme and rainfall estimation. The alarm index is discussed in the next session.

4 The flood alarm index

An alarm index is estimated for each cell of CHYM hydrological model as the ratio of total drained rain in the last 48 hours and total drain surface, this correspond to the average rainfall in the upstream basin of each cell. Both the drained rain and drained surface are calculated iterating the following step:

1. from each cell a “stone” rolls down to the sea following the flow direction map calculated from the DEM
2. each time a stone pass by a cell a counter is incremented for that cell

These steps are iterated until all the “stones” have reached the sea. At the end of the iteration we have a matrix containing the total number of cells drained by each grid point and this matrix can be used for many purposes, for example to distinguish cells where runoff occur overland from cells where runoff occur along channel. In addition the algorithm can be generalized to estimate different quantities: for example if the area of the starting cell is associated to the “stones” we can estimate the total area drained by each cell, while if the rainfall in the starting cell is associated to the “stones” we can estimate the total drained rain.

The choice of 48 h as time interval is justified both by empirical observations discussed in the next section and by the fact that this corresponds to a typical runoff time for the river basins simulated in this work, namely a sort of typical time interval that a rain drop would take to arrive at the mouth of the river; we also notice how the total drained area is proportional, as a first approximation, to the river cross section (see as an example Borah et al., 2002) and then the proposed flood alarm index is a sort of measure of river stress.

What is more important for operational activities and for actual use of the model for flood alert mapping is that the proposed alarm index seems to be suitable to highlight the section of the drainage network that was actually interested by flood events at least for all the case-studies reported in this study and discussed in the next session. An example of alarm mapping for one of the case studies is shown in Fig. 3.

5 Case studies

Three case studies have been selected for different region of Italy:

1. The Soverato flood – 9–10 September 2000 (Figs. 1 and 3). Soverato torrent drains an area of few hundreds of square kilometres and is situated in Southern Italy’s Calabria Region. Flooding occurred between the towns of Soverato and Montepaone after a prolonged and intense precipitation event, causing landslides, great disruption and losses of life. Rainfall peaks above 300 mm in 24 h was recorded close to the village of Soverato (Montani et al., 2003).

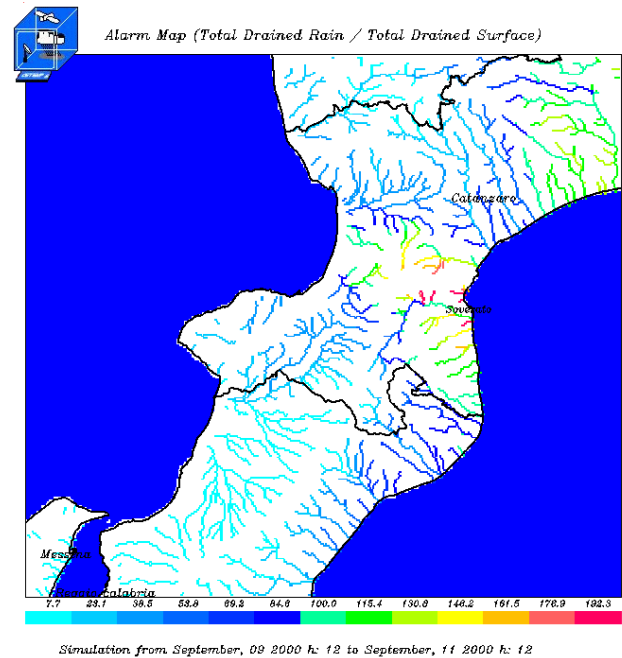


Fig. 3. CHYM alarm map for the Soverato flood, alarm index is calculated from 9 September 2000, h: 12 until 11 September 2000, h: 12.

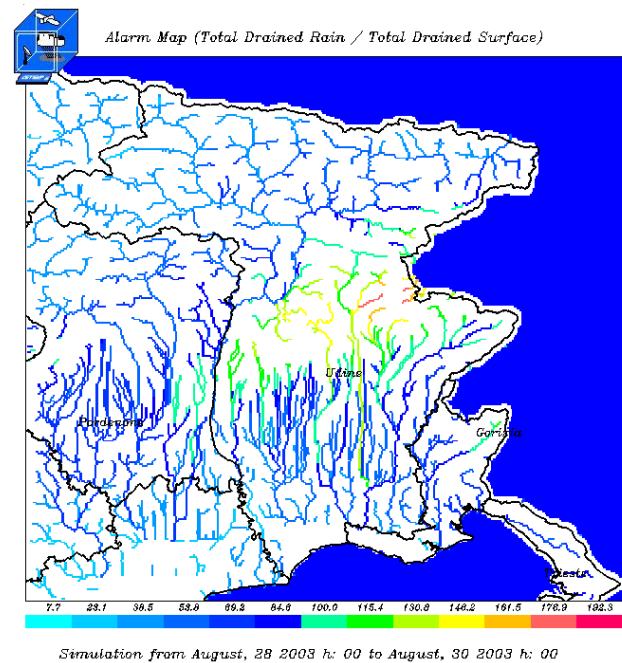


Fig. 4. CHYM alarm map for the Val Canale event, alarm index is calculated from 28 August 2003, h: 00 until 30 August 2003, h: 00.

2. The Val Canale flood – 29 August 2003 (Figs. 2 and 4). A flash flood occurred in the Valcanale valley in the Friuli Region in the North East of Italy causing many damages to buildings and loss of three people. More than 400 mm of precipitation in 24 h were recorded in the villages of Grauzaria di Moggio and Pontebba.

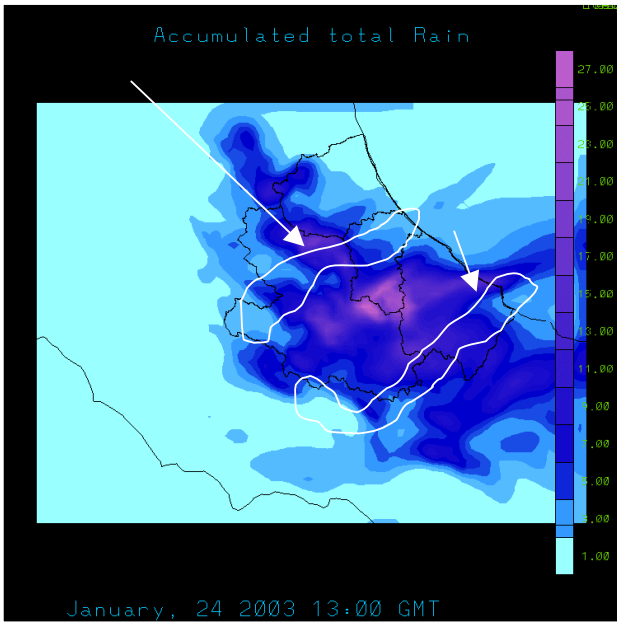


Fig. 5. MM5 simulation for 24–26 January 2003: two-day accumulated precipitation (cm). The river beds Trigno and Sangro are highlighted.

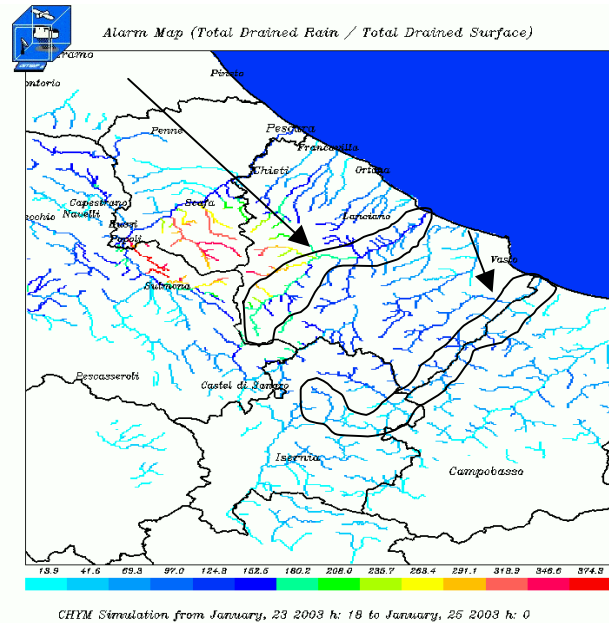
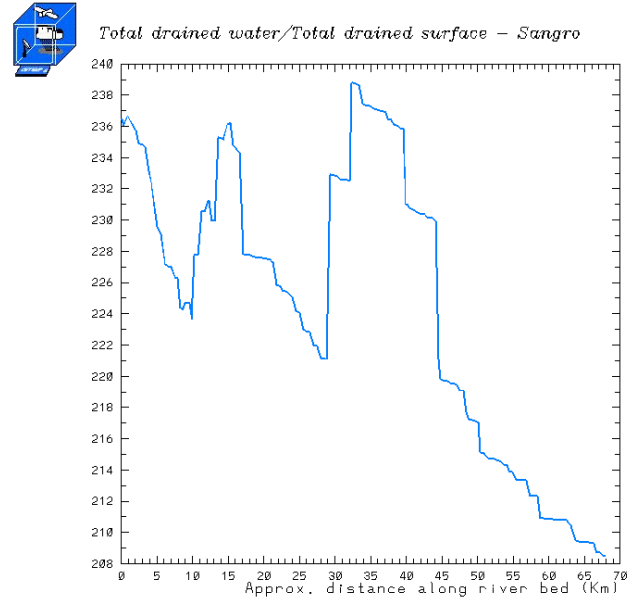


Fig. 6. CHYM alarm map for the Sangro event, alarm index is calculated from 23 January 2002, h: 18 until 25 January 2002, h: 18.

3. The Sangro river flood – 24–25 January 2003 (Figs. 5 and 6). In this case a typical winter frontal system produced an intense precipitation that lasted for about 30 h; many relatively large floods have been observed in the zone close to Maiella Mountains. The Sangro River has a drainage area of about 2000 square kilometres and is located in the Central East part of Italy in



CHYM Simulation from January, 23 2003 h: 18 to January, 25 2003 h: 0

Fig. 7. The Alarm Index along the bed of Sangro river (0 of x-axis corresponds to the spring) that has been interested by the flood in the region close to the spring.

Abruzzo Region, the flood occurred in the higher part, about 40 km from the spring causing damages to many buildings and a bridge.

For all the case studies a run with MM5 mesoscale meteorological model has been carried out and the model has been forced with ECMWF analyses and forecast, the configuration of the model is similar to the operative version (Paolucci et Al., 1999). The innermost domain of simulation, running with a 3 km of spatial resolution has been set in the zone where major severe events occur. Figures 1 and 4 show the accumulated rain field as predicted by the model for case studies 1 and 3.

In Fig. 5 the field of accumulated precipitation in northern eastern Italy for 48 h is reported. During the precipitation event a maximum of 300–400 mm of rain has been registered in 10 h.

In the Figs. 3, 4 and 6 the alarm map calculated by CHYM model is reported and in all the cases the alarm index seems to well localize the segments of drainage network where more critical events actually occurred. In particular comparing maps 1 and 3 it can be seen how the zone where flood event occurred is not the same of the maximum in the accumulated precipitation as we expect because of the complex geomorphology of the domain. All the alarm map has been computed using a 48 h time interval for the reason explained in Sect. 4, but also because this interval seems the more suitable to highlight the more stressed segments of drainage network. It is useful to remind that CHYM model rebuilt the rainfall field on the simulated domain at hourly base using

observed and simulated precipitation data, therefore for operational purpose an effective alarm mapping could be obtained using the observed rainfall data in the last 24 h and the first 24 h of the forecast leading to the possibility to have flood warning about one day before the event.

In the Fig. 7 the alarm index is plotted along the river bed of Sangro river and the two area with major flood risk can easily be seen.

6 Summary and future developments

A grid based distributed hydrological model has been coupled with a mesoscale model for flood alarm index computation. Simulations have been carried out for three different case studies occurring in different zones of north, central and south Italy.

In all the simulated case studies the segments of the drainage network where the flooding events have actually been observed are correctly located by CHYM flood alert tool.

In all the domains of northern, central and southern Italy a critical threshold of 150–200 mm of alarm index has been found to perform correctly.

Although these are only preliminary results they are encouraging to actually use this approach for operational activity. A first application for flood alert mapping daily updated is now available at URL: <http://cetemps.aquila.infn.it/chymop>.

Edited by: L. Ferraris

Reviewed by: anonymous referees

References

- Borah, D. K., Xia, R., Bera, M.: DWSM – A Dynamic Watershed Simulation Model, Mathematical Model for Small Watershed Hydrology, WRP Edition, 2002.
- Coppola, E., Verdecchia, M., Tomassetti, B., and Visconti, G.: CHYM: A Grid based Hydrological Model, Proceedings of International Symposium on Remote Sensing of Environment, Honolulu, Hawaii, November 2003.
- Borah, D. K., Xia, R., and Bera, M.: DWSM – A dynamical watershed simulation model, Mathematical Model for Small Watershed Hydrology, WRP Edition, 2002.
- Easterling, D. R., Evans, J. L., Groisman, P. Ya., Karl, T. R., Kunkel, K. E., and Ambenje, P.: Observed Variability and Trends in Extreme Climate Events: a Brief, Review Bulletin of Am. Met. Soc., 81, 3, 417–425, March 2000.
- Dudhia J.: A nonhydrostatic version of the Pen State/NCAR mesoscale model: validation test and simulation of an Atlantic Cyclon and cold front, Mon. Wea. Rev., 121, 493–513, 1993.
- Grell G. A., Dudhia, J., and Stauffer, D. R.: A description of the fifth generation of the Pen State/NCAR mesoscale model (MM5), NCAR Technical Note, NCAR/TN-398+STR, 121pp, 1994.
- Kain, J. S. and Fritsch, J. M.: A one-dimensional entraining/detraining plume model and its application in convective parameterization, J. Atmos. Sci., 47, 2784–2802, 1990.
- Meehl, G. A., Zwiers, F., Evans, J., Knutson, T., Mearns, L., and Whetton, P.: Trends in Extreme Weather and Climate Events: Issues related to Modeling Extremes in Projection of Future Climate Change, Bulletin of Am. Met. Soc., 81, 3, 427–436, March 2000.
- Montani, A., Marsigli, C., Nerozzi, F., Paccagnella, T., Ribaldi, S., and Buizza, R.: The Noverato Flood in Southern Italy: Performance of Global and Limited Area Ensemble Forecasts, Nonlin. Proc. Geophys., 10, 261–274, 2003, **SRef-ID: 1607-7946/npg/2003-10-261**.
- Paolucci, T., Bernardini, L., Ferretti, R., and Visconti, G.: MM5 Real-Time Forecast of a Catastrophic Event on May, 5 1998, Il Nuovo Cimento, 12, 727–736, 1999.
- Tomassetti, B., Coppola, E., Cimini, D., Verdecchia, M., Marzano, F. S., and Visconti, G.: Assimilating satellite rainfall estimation into hydrological model for flooding alert mapping, Actif Workshop 1: Combination of data from remote sensing technologies for flood forecasting, 24–25 November 2003, Bologna, 2003.
- Todini, E. and Ciarrapica, L.: The TOPKAPI Model, Mathematical Model for Large Watershed Hydrology, WRP Edition, 2002.
- Troen, I. and Mahrt, L.: A simple model of the atmospheric boundary layer: Sensivity to surface evaporation, Boundary Layer Meteorology, 37, 129–148, 1986.
- Wilby, R. L. and Wigley, T. M. L.: Downscaling General Circulation Model Output: a Review of Methods and Limitation, Prog. Phys. Geo., 21, 530–548, 1997.