



HAL
open science

A study of polar ozone depletion based on sequential assimilation of satellite data from the ENVISAT/MIPAS and Odin/SMR instruments

J. D. Rösevall, D. P. Murtagh, Jakub Urban, A. K. Jones

► **To cite this version:**

J. D. Rösevall, D. P. Murtagh, Jakub Urban, A. K. Jones. A study of polar ozone depletion based on sequential assimilation of satellite data from the ENVISAT/MIPAS and Odin/SMR instruments. *Atmospheric Chemistry and Physics*, 2007, 7 (3), pp.899-911. hal-00296153

HAL Id: hal-00296153

<https://hal.science/hal-00296153>

Submitted on 18 Jun 2008

HAL is a multi-disciplinary open access archive for the deposit and dissemination of scientific research documents, whether they are published or not. The documents may come from teaching and research institutions in France or abroad, or from public or private research centers.

L'archive ouverte pluridisciplinaire **HAL**, est destinée au dépôt et à la diffusion de documents scientifiques de niveau recherche, publiés ou non, émanant des établissements d'enseignement et de recherche français ou étrangers, des laboratoires publics ou privés.

A study of polar ozone depletion based on sequential assimilation of satellite data from the ENVISAT/MIPAS and Odin/SMR instruments

J. D. Rösevall, D. P. Murtagh, J. Urban, and A. K. Jones

Department of Radio & Space Science, Chalmers Univ. of Technology, Göteborg, Sweden

Received: 3 July 2006 – Published in Atmos. Chem. Phys. Discuss.: 10 October 2006

Revised: 14 December 2006 – Accepted: 12 February 2007 – Published: 16 February 2007

Abstract. The objective of this study is to demonstrate how polar ozone depletion can be mapped and quantified by assimilating ozone data from satellites into the wind driven transport model DIAMOND, (Dynamical Isentropic Assimilation Model for OdiN Data). By assimilating a large set of satellite data into a transport model, ozone fields can be built up that are less noisy than the individual satellite ozone profiles. The transported fields can subsequently be compared to later sets of incoming satellite data so that the rates and geographical distribution of ozone depletion can be determined. By tracing the amounts of solar irradiation received by different air parcels in a transport model it is furthermore possible to study the photolytic reactions that destroy ozone.

In this study, destruction of ozone that took place in the Antarctic winter of 2003 and in the Arctic winter of 2002/2003 have been examined by assimilating ozone data from the ENVISAT/MIPAS and Odin/SMR satellite-instruments. Large scale depletion of ozone was observed in the Antarctic polar vortex of 2003 when sunlight returned after the polar night. By mid October ENVISAT/MIPAS data indicate vortex ozone depletion in the ranges 80–100% and 70–90% on the 425 and 475 K potential temperature levels respectively while the Odin/SMR data indicates depletion in the ranges 70–90% and 50–70%. The discrepancy between the two instruments has been attributed to systematic errors in the Odin/SMR data.

Assimilated fields of ENVISAT/MIPAS data indicate ozone depletion in the range 10–20% on the 475 K potential temperature level, (\sim 19 km altitude), in the central regions of the 2002/2003 Arctic polar vortex. Assimilated fields of Odin/SMR data on the other hand indicate ozone depletion in the range 20–30%.

Correspondence to: J. D. Rösevall
(rosevall@rss.chalmers.se)

1 Introduction

For more than two decades massive photochemical depletion of ozone has been observed each spring below \sim 22 km altitude in the Antarctic polar vortex (Farman et al., 1985). Indications of corresponding, albeit smaller depletion of ozone in the Arctic spring have also been found (Rex et al., 1998; Newman et al., 2002). The standard explanation for these phenomena involves activation of chlorine reservoir species in heterogeneous reactions that take place on aerosol-particle surfaces in so called polar stratospheric clouds. Polar stratospheric clouds consist of both crystalline and liquid aerosols of nitric- and sulphuric-acid that form inside the polar vortex during the polar winter night. Since it is less stable and therefore warmer, far fewer polar stratospheric clouds however form in the Arctic polar vortex than in its Antarctic counterpart.

When sunlight returns to the polar region after the winter, ozone is lost in photochemical reactions driven by catalyst species such as Cl_x , NO_x and HO_x . Ozone losses that occur above 25 km in the Arctic and Antarctic regions are mainly caused by NO_x . The near total depletion of ozone that occur in the Antarctic polar vortex below \sim 22 km altitude is however predominately caused by Cl_x built up during the winter (Solomon, 1999). Ozone losses driven by Cl_x are on the other hand much smaller in the Arctic vortex and occur mainly after colder than average winters.

To measure how much ozone is destroyed one must follow air parcels that move in the stratosphere so they can be sampled at consecutive times. The so called Match technique is a lagrangian approach to this problem (Rex et al., 1998). It involves calculating three dimensional trajectories of air parcels that undergo wind driven advection on isentropic surfaces and vertical transport due to radiative cooling of the winter stratosphere. Ozone destruction in the air parcels is subsequently estimated by comparing balloon sonde measurements at the start and at the end of the

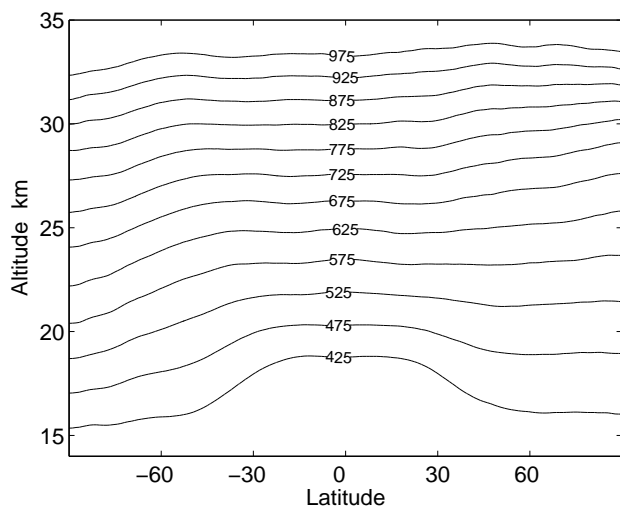


Fig. 1. Average December altitudes of the isentropic levels used in the DIAMOND model. Potential temperatures in Kelvin.

calculated trajectories. It should be possible to use this technique also with satellite data but individual satellite measurements are by and large more noisy which makes the method more difficult to implement. Ozone depletion is instead often estimated by taking daily averages of all satellite measurements inside the polar vortex. To keep track of the polar vortex which moves, changes its shape and sinks during the winter, stratospheric constituents with low chemical reactivity can be followed (Proffitt et al., 1993). Sampling the entire polar vortex at once does however give a rather low spatial resolution. The temporal and spatial coverage of the Match technique is on the other hand limited by the number of balloon sondes available for analysis.

The objective of this study is to demonstrate how ozone depletion can be mapped and quantified by assimilating ozone data from satellites into a wind driven transport model. By assimilating large sets of satellite data the random noise in the individual satellite ozone profiles is averaged out in the model. The transported fields can subsequently be compared to later sets of incoming satellite data for the purpose of determining the rates and geographical distribution of polar ozone depletion.

In Sect. 2 of this paper we present a low-diffusive transport and assimilation model, DIAMOND, that has been developed to carry out the strategy outlined above. The model has been used for studying destruction of polar ozone in the lower stratosphere by assimilating ozone profiles from the Odin/SMR and ENVISAT/MIPAS satellite-instruments, described in Sect. 3 and Sect. 4. The assimilated ozone fields in the DIAMOND model have been validated by comparison to balloon sonde measurements made at the south pole and at Ny-Ålesund (79° N, 12° E). Vertical transport in the polar vortex has furthermore been traced by assimilating chemically inert nitrous oxide retrieved by Odin/SMR.

A study of vertical transport in the polar vortex of the Antarctic winter of 2003 is presented in Sect. 5 and a study of ozone depletion during that winter is presented in Sect. 6. Vertical transport and ozone depletion in the Arctic winter of 2002/2003 is studied in Sect. 7 and Sect. 8 respectively. The ozone depletion estimates found using the DIAMOND model are discussed and compared to other studies in Sect. 9.

2 The DIAMOND model

The DIAMOND model, (Dynamical Isentropic Assimilation Model for Odin Data), has been designed to accomplish low-dispersive off-line wind-driven ozone transport in the lower stratosphere. Horizontal advection has been modeled on 12 separate isentropic surfaces between 425 and 975 K which correspond roughly to altitudes in the range 15 to 35 km. See Fig. 1. Since potential temperatures in dry air are conserved under adiabatic conditions vertical transport across isentropic layers is generally slow in temperate and polar regions. An exception to near adiabatic conditions occurs however during the polar winter night when there is strong radiative cooling of air masses inside the polar vortex. In this study vertical transport has been monitored by keeping track of chemically stable N_2O that has been assimilated in parallel with the ozone fields.

The DIAMOND model is used for quantifying polar ozone depletion by subtracting passively transported ozone fields from fields of assimilated satellite data. Chemistry has therefore been omitted from the model. The reactivity of ozone in the polar regions tend furthermore to be rather low at altitudes below 25 km except when fast photolytic destruction of ozone occurs in air masses that have been heterogeneously ClO_x activated during the winter.

2.1 Transport model

The DIAMOND model has been designed for studying the polar regions. Horizontal transport has therefore been modeled on a square grid that is centred over one pole and extends to the equator. See Fig. 2. With a grid like this it has been possible to achieve high spatial resolution without using ultra fine time discretisation which is generally a limiting factor for latitude/longitude grids that have very fine zonal grid spacing near the poles. The simplicity of the grid has also facilitated implementing the advection scheme. The fact that the grid does not provide global coverage is on the other hand a disadvantage but it is tolerable since equatorial air masses need several weeks to reach the regions surrounding the polar vortex. Another obvious disadvantage is that the square shape of the grid is distorted in the equatorial region. By transforming the off-line wind fields to the local non-Cartesian coordinate systems one can eliminate transportation errors but the use of a rhomboid grid adds some numerical diffusivity to the transport scheme. The square shape of

the grid is however well retained over the polar regions where ozone depletion occurs. A grid spacing of 167×167 km (over the pole) and a time-step of 10 min length has been used in this study.

Horizontal off-line wind driven advection has been implemented using the Prather transport scheme (Prather, 1986). It is a mass conservative Eulerian type of transport scheme that achieves very low numerical diffusivity by storing and transporting the first and second order spatial derivatives of tracer fields as well as the average tracer concentration in each grid-box. The Prather scheme is thus much more time consuming than a simple upstream transport scheme but the low numerical diffusivity achieved is essential when quantifying ozone depletion processes that proceed over several months. Wind fields obtained from the European Centre for Medium-range Weather Forecasts, ECMWF, have been used to force the advection scheme in this study.

Vertical transport is generally not implemented in the DIAMOND model except when there is substantial radiative cooling of air masses inside the polar vortex during the polar night. The rate of descent of air masses in the vortex is determined by assimilating chemically inert N_2O and tracing the vortex average concentrations on different model levels. (The descent in the Antarctic vortex of 2003 and the Arctic vortex of 2002/2003 are presented in Sects. 5 and 7 respectively.) The rates of descent obtained are subsequently used to drive vertical transport of ozone inside the vortex. The vertical transport is implemented using one simple upstream step per day.

2.2 Assimilation scheme

Satellite data are assimilated into the DIAMOND model using a sequential algorithm that can be described as a variant of the familiar Kalman filter. A field containing estimates of the errors in the model is thus built up and transported alongside the ozone field for the purpose of weighting in new data in an optimal way. In each model time-step the assimilation algorithm updates the subset of grid points that are located within 3000 km of any satellite observations that have been made. New data is weighted in according to the formula below where X_b is a column vector containing the subset of model grid-points that are affected by assimilation, X_a is the same subset of the model grid after assimilation and Y is a vector containing the satellite data to be assimilated. H is an operator for linear interpolation from the model grid to the locations of the satellite measurements and W is an optimal weighting matrix that is derived in each time-step (Daley, 1991).

$$X_a = X_b + W(Y - H(X_b)) \quad (1)$$

The optimal weighting matrix, W , is derived using estimates of the noise in the satellite measurements, given in a covari-

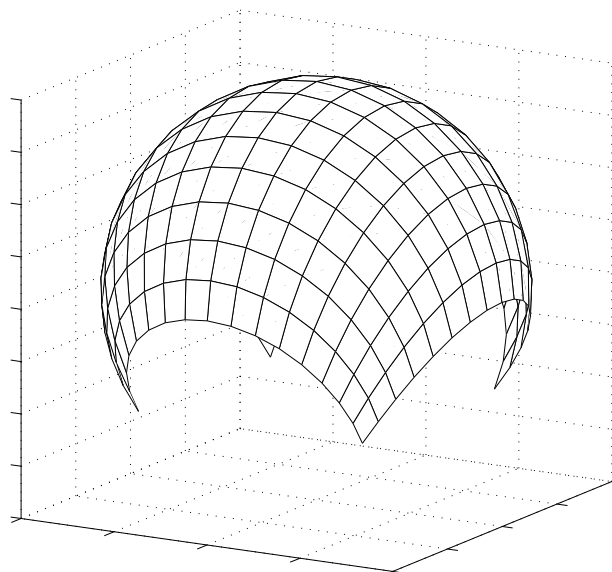


Fig. 2. The shape of the grid used in the DIAMOND model.

ance matrix R , and estimates of the errors in the model field, given by two covariance matrices S_{bo} and S_{oo} .

$$W = S_{bo}(S_{oo} + R)^{-1} \quad (2)$$

To be more precise, S_{bo} is a cross covariance matrix of the model errors in the vector X_b and the model errors at the points of satellite observations, $H(X_b)$. S_{oo} is on the other hand a covariance matrix for the errors in $H(X_b)$ alone.

$$R = \langle (Y - Y_t)(Y - Y_t)^T \rangle \quad (3)$$

$$S_{bo} = \langle (X_b - X_t)(H(X_b) - H(X_t))^T \rangle \quad (4)$$

$$S_{oo} = \langle (H(X_b) - H(X_t))(H(X_b) - H(X_t))^T \rangle \quad (5)$$

X_t and Y_t in the formulae above denote the true atmospheric concentrations of the tracer at the grid-points and at the points of satellite observations respectively and $\langle \rangle$ denotes the operator for expectation values.

To derive W it is thus necessary to estimate the matrixes S_{bo} and S_{oo} . A computationally efficient solution to this problem can be implemented by estimating the correlation between different points in the model, (indexed i and j), with an empirical correlation function $F(i, j)$ so that only σ_i , (the estimated error standard deviations in the actual grid points), have to be stored and transported (Menard et al., 2000).

$$S_{ij} = \sigma_i \sigma_j * F(i, j) \quad (6)$$

The correlation function, $F(i, j)$, must be chosen empirically to fit the particular transport model that it is used with.

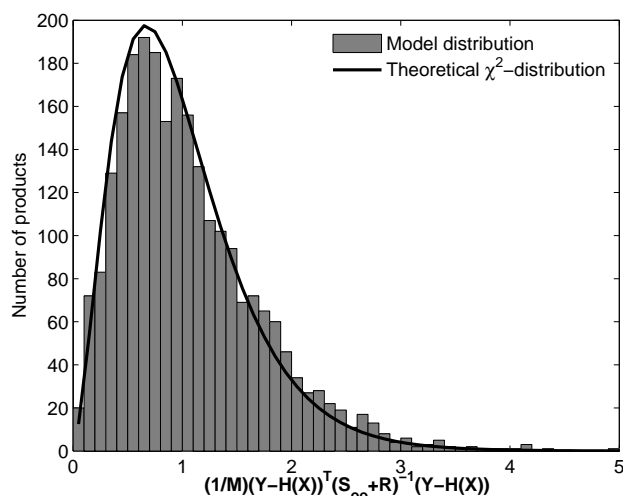


Fig. 3. The correlation distance parameter L has been tuned to a value for which the distribution of the dimensionless quadratic form $(Y - \mathbf{H}(X))^T (\mathbf{S}_{00} + \mathbf{R})^{-1} (Y - \mathbf{H}(X))$ fits a theoretical χ^2 -distribution.

One way to simplify this process is to assume that $F(i, j)$ is a function of the geographical distance, r_{ij} , between the two grid points i and j . This methodology has for example been described in (Khattatov et al., 2000) where several different function types were evaluated as candidates for $F(r_{ij})$. One function that they found favourable was the Gaussian shaped function. It has therefore been used in the Diamond model.

$$F(i, j) = \exp\left(-\frac{r_{ij}^2}{2L^2}\right) \quad (7)$$

The Gaussian function is fitted to the model by adjusting the parameter L to a value where empirical agreement is reached between $F(r_{ij})$ and error correlations observed in the model.

Assimilation of new data is obviously a process that lowers the error standard deviation estimates in the σ field. Consequently Kalman filtering theory describes how the field should be updated when assimilation has occurred.

$$\sigma_a^2 = \sigma_b^2 - \text{diag}(\mathbf{W}\mathbf{S}_{b0}^T) \quad (8)$$

There are on the other hand also factors like chemical processes in the stratosphere and imperfections in the transport scheme that makes it necessary to add a growth term to the σ field. In the DIAMOND model, linear increment with time has been used to approximate the growth of uncertainty in the tracer fields.

$$\sigma_{(t+\Delta t)} = \sigma_t + k_\sigma * \Delta t \quad (9)$$

Both L and k_σ are parameters that must be tuned empirically. Ideally they should be set to values that minimise the

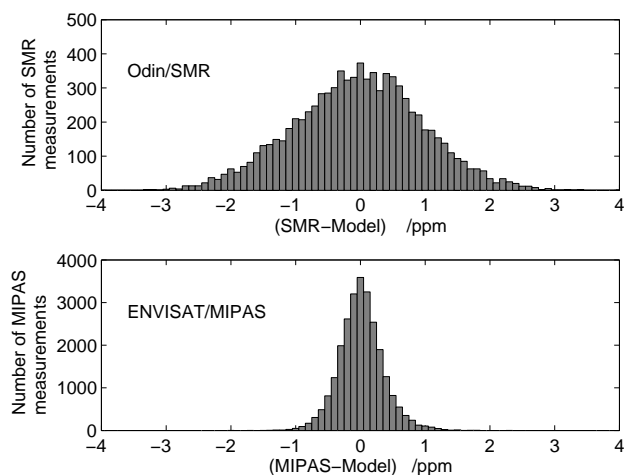


Fig. 4. Observations minus model background on the 475 K potential temperature level. All observations included in the histograms were made north of 30° N during January, February and March of 2003.

difference between model forecasts, $\mathbf{H}_n(X)$, and individual satellite observations, y_n , in a least squares sense.

$$\sum_{n=1}^N (y_n - \mathbf{H}_n(X))^2 / N \quad (10)$$

This least squares value is however not very sensitive to either L or k_σ once the assimilation model has run for a few days. The error growth rates, k_σ , on the different model levels has therefore been set to values for which agreement is achieved between the model error standard deviation estimates, σ_x , and the observed variance between model and satellite observations.

L has on the other hand been derived by evaluating the quadratic form in expression (11) below. The dimensionless values given by the expression are expected to be distributed according to the so called χ^2 -function of order equal to M (the number of elements in \mathbf{Y}) if the matrices \mathbf{R} and \mathbf{S}_{00} provide correct estimates of the error covariances for the vectors \mathbf{Y} and $\mathbf{H}(X)$ respectively. \mathbf{R} is not controlled by any assimilation parameter since it is supplied in the satellite data. The non diagonal elements in \mathbf{S}_{00} are on the other hand functions of L . The parameter has thus been tuned to the value 920 km for which the expected χ^2 -distribution was found, (see Fig. 3).

$$(\mathbf{Y} - \mathbf{H}(X))^T (\mathbf{S}_{00} + \mathbf{R})^{-1} (\mathbf{Y} - \mathbf{H}(X)) \sim \chi_M^2 \quad (11)$$

3 Odin/SMR

The Odin satellite, launched in 2001 as a joint venture by the national space agencies of Sweden, Canada, Finland and

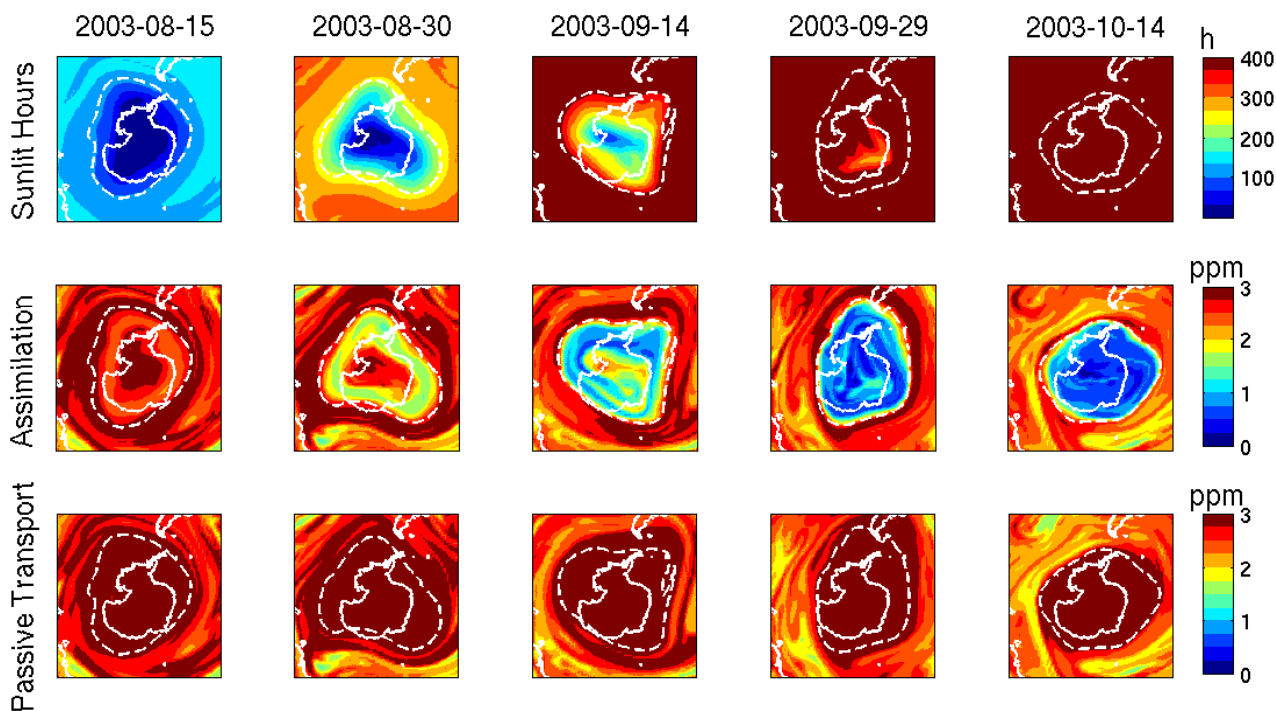


Fig. 5. Assimilated fields of ozone on the 475 K potential temperature level compared to fields passively transported from 1 August of 2003. The fields in the top row represent the number of hours of sunlight that has fallen on the air masses in the model since 1 August, the middle row contains assimilated fields of ozone profiles from ENVISAT/MIPAS and the bottom row contains fields passively transported from 1 August without any new data assimilated into them. The dashed lines outline the border of the polar vortex.

France, completes ~ 15 near-terminator polar orbits per day with descending nodes at 06:00 h local solar time. Its payload consists of two different limb scanning instruments, SMR (Sub-Millimetre Radiometer) and OSIRIS (Optical Spectrograph/InfraRed Imaging System), that obtain vertical profiles of ozone and other trace species in the middle atmosphere (Murtagh et al., 2002). The SMR instrument is however also used for radio-astronomy which means that 50% of the satellites operational time is used for astrophysics instead of Earth observations.

The OSIRIS instrument detects visible and infrared light scattered from the sun. It can therefore not make observations when the sun is below the horizon of the satellite in the winter hemisphere. Consequently no data from the OSIRIS instrument has been used in this study.

The SMR instrument comprises four tunable Schottky-diode single-sideband heterodyne microwave receivers. In the basic mode for stratospheric observations, two of the receivers covering the 486–504 GHz and 541–558 GHz frequency bands respectively, are used to detect microwave emission lines in the spectra of O_3 , N_2O , ClO and HNO_3 . Two separate lines, centred at 501.5 GHz and 544.9 GHz respectively, are observed in the spectrum of ozone. The ozone data used in this study have been retrieved from the 501.5

GHz line using the Chalmers-v2.0 retrieval scheme. The random noise standard deviation in the individual ozone profiles is below 1.5 ppmv and the estimated systematic errors are less than 0.75 ppmv (Urban et al., 2006, 2005). In the polar regions the ozone profiles thus obtained cover altitudes in the range 12–50 km with ~ 3 km altitude resolution. The N_2O data used in this study have been retrieved from a line at 502.3 GHz using the same software. The N_2O profiles cover altitudes in the range 12–60 km with ~ 1.5 km altitude resolution. The noise in the individual N_2O profiles is below 30 ppbv and the estimated systematic errors are less than 12 ppbv (Urban et al., 2006, 2005).

4 ENVISAT/MIPAS

The ENVISAT satellite, launched in 2002 by the European Space Agency (ESA), completes ~ 15 polar orbits per day with descending nodes at 10:00 h local solar time. Its mission comprises monitoring the land, ice, oceans and atmosphere of the Earth providing data for environmental research. Ten different instruments are included in its payload, three of which GOMOS, MIPAS and SCIAMACHY were designed to study trace gases in the atmosphere.

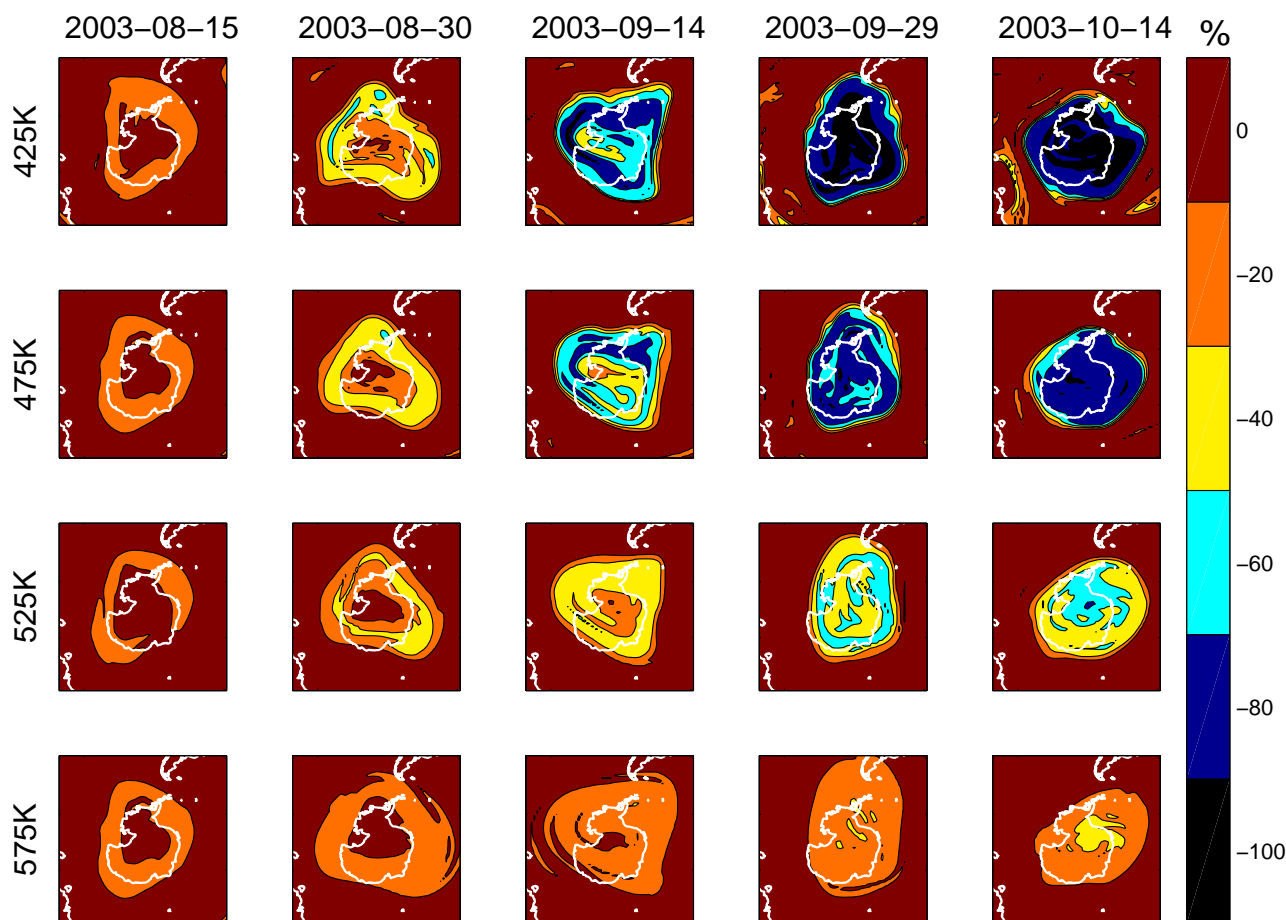


Fig. 6. Estimates of ozone depletion in the 2003 Antarctic spring made by comparing assimilated fields of ENVISAT/MIPAS data to fields passively transported from 1 August. The percentages displayed were calculated using the formula: $100 \times [(\text{active field}) - \text{passive field}] / (\text{passive field})$.

The MIPAS instrument, (Michelson Interferometer for Passive Atmospheric Sounding), is a passive limb scanning high-resolution Fourier transform spectrometer for the middle infrared region. The instrument is primarily designed to retrieve atmospheric profiles of ozone and other atmospheric trace species, including CFC's and the complete NO_y family, but it can also provide estimates of tropospheric cirrus and stratospheric ice clouds including polar stratospheric clouds (Endemann, 1999). The data retrieval scheme for ozone and other trace gases is described in Ridolfi et al. (2000). The MIPAS ozone profiles used in this report have been produced using the 4.61 version of the retrieval software and cover the altitude range 8–55 km with 3 km altitude resolution. The noise level in the individual ozone profiles is below 10% of the profile volume mixing ratios, (Ridolfi et al., 2000; Raspollini et al., 2006), which typically corresponds to less than 0.5 ppmv below 25 km altitude in the stratosphere.

The distribution of MIPAS ozone observations minus DIAMOND model forecasts on the 475 K level is presented in Fig. 4. The distribution of Odin/SMR ozone observations minus DIAMOND model forecasts on the 475 K level is also presented. One can clearly see that the Odin/SMR ozone data is much more noisy than the data from ENVISAT/MIPAS. (Different scales have been used for the y-axes of the two histograms to make it possible to see the random distributions of the two sets of data. It may therefore seem like less data from ENVISAT/MIPAS than from Odin/SMR are included in the figure although the number of ozone profiles from ENVISAT/MIPAS is more than twice the number of Odin/SMR profiles.)

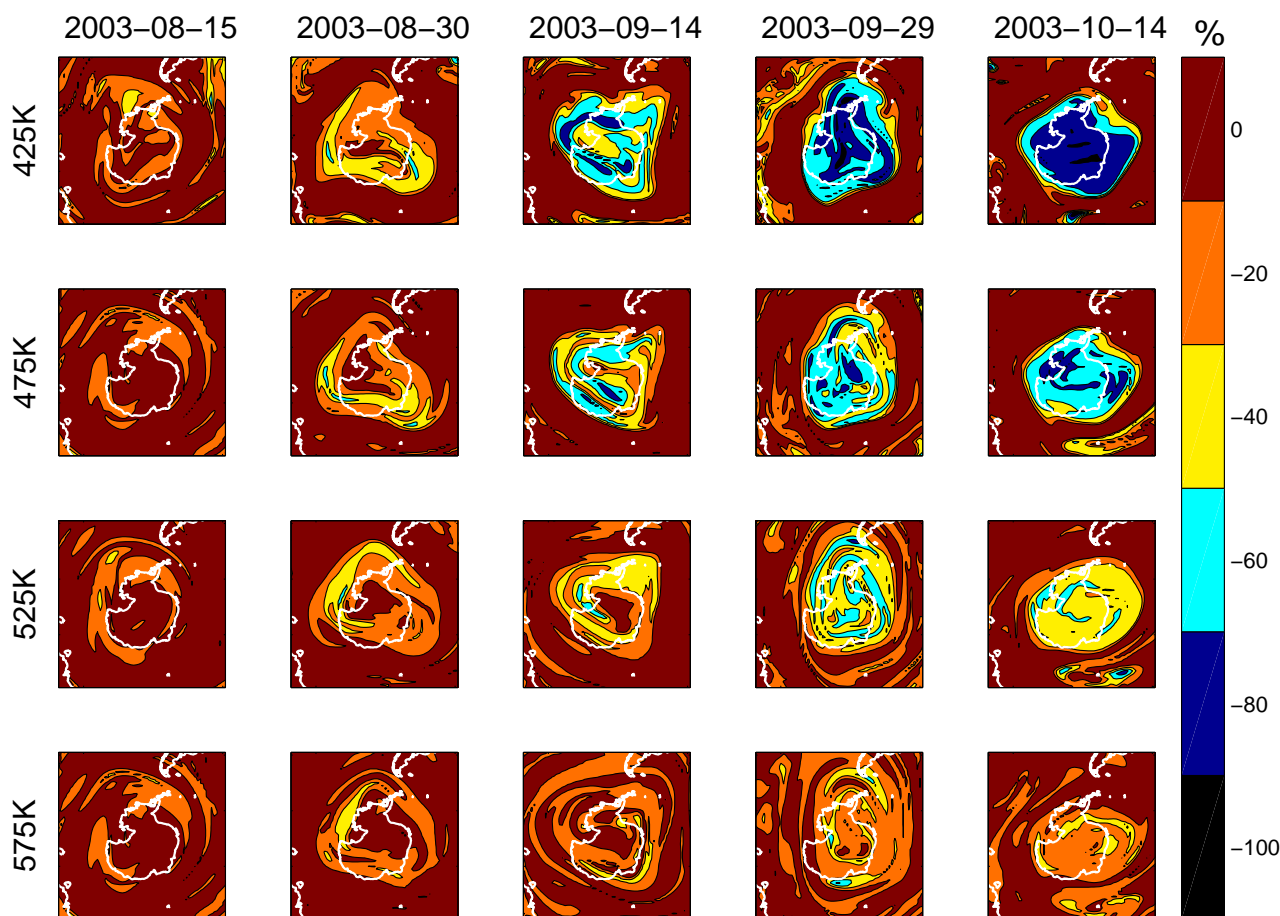


Fig. 7. Estimates of ozone depletion in the 2003 Antarctic spring made by comparing assimilated fields of Odin/SMR data to fields passively transported from 1 August. The percentages displayed were calculated using the formula: $100 \times [(\text{active field}) - (\text{passive field})] / (\text{passive field})$.

5 Vertical transport in the Antarctic polar vortex of 2003

N_2O data from Odin/SMR have been assimilated in the DIAMOND model to keep track of the vertical transport processes. The mixing ratio of N_2O decreases rapidly with altitude since the species is destroyed by high energy UV-radiation in the upper stratosphere. N_2O is on the other hand chemically inert at lower altitudes and in the polar night and can therefore be used as a passive tracer to monitor transport in the polar vortex. Time series of model vortex average N_2O mixing ratios are plotted in Fig. 9. The vortex averages are defined as the average mixing ratio on the 30 million km^2 area with lowest N_2O concentration on each potential temperature level in the DIAMOND model. N_2O samples of equal size have thus been obtained on all levels in the vortex which makes the sample averages relevant for tracing vertical transport in it. Using samples with constant size throughout the months studied is furthermore a consistent way of defining the polar vortex. The 30 million km^2 samples are how-

ever well retained within the vortex borders as defined by the contours of maximum gradient in the N_2O fields.

The N_2O mixing ratios in Fig. 9 decrease rapidly from May to late July, indicating fast radiative cooling of the polar vortex during this period. From early August to late October the mixing ratios were on the other hand more stable which indicates that transport between different potential temperature levels was slow. By following the vortex average N_2O mixing ratios we estimate that the potential temperatures on all four levels described in Fig. 9 decreased by ~ 10 K during August and remained stable in September and October. Vertical transport thus had a small impact on the ozone mixing ratios in the vortex during these months since the potential temperature difference between model levels is 50 K and the ozone mixing ratios in the polar vortex generally differ with 10–20% between model levels.

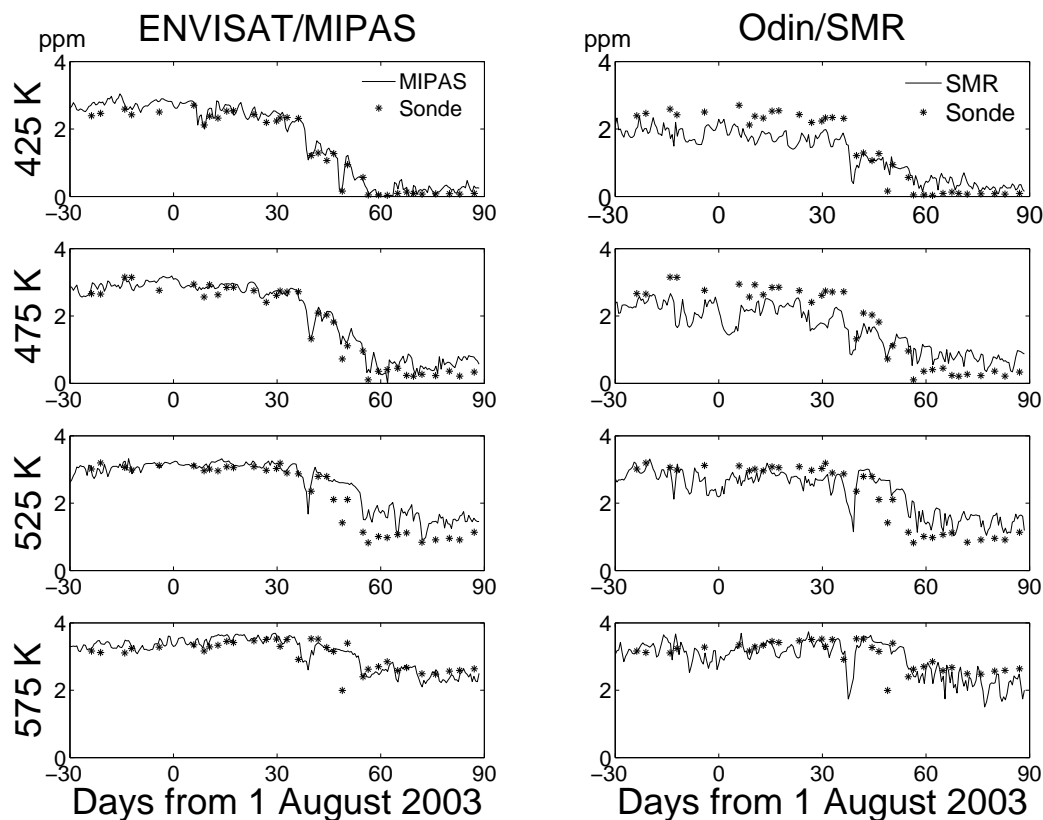


Fig. 8. Assimilated satellite data compared to balloon sonde measurements made over the south pole during the Antarctic winter of 2003. The solid lines represent the ozone mixing ratios found directly over the south pole in the DIAMOND model and the stars represent sonde measurements made at the same location. The sonde data has been obtained from the Network for the Detection of Atmospheric Composition Change (NDACC) and is publicly available (see <http://www.ndacc.org>).

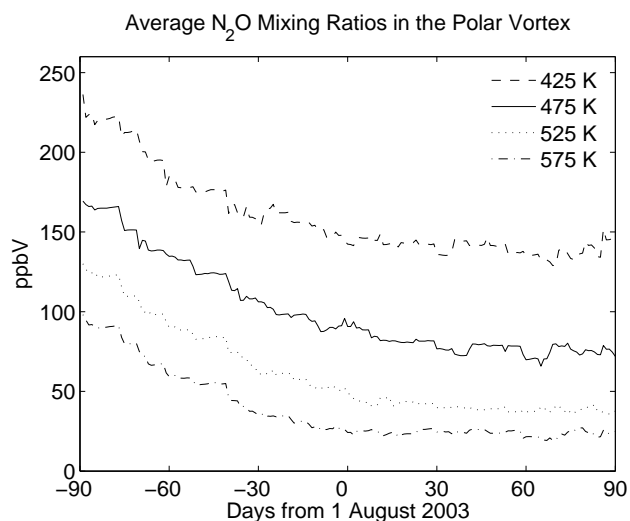


Fig. 9. Time evolution of the average N_2O mixing ratios on different potential temperature levels in the Antarctic polar vortex of 2003. The vortex averages have been obtained from assimilated fields of Odin/SMR N_2O data.

6 Ozone depletion in the Antarctic Winter of 2003

The ozone destruction that occurred in the Antarctic polar vortex of 2003 has been studied by comparing assimilated fields of ozone to ozone fields that have been passively transported from 1 August of that year. To avoid issues associated with spin-up of the model the initial ozone fields were obtained by assimilating ozone profiles into the DIAMOND model for more than two months prior to 1 August. Vertical transport was not implemented in the Diamond model after 1 August since assimilated N_2O fields indicated little such transport (see Sect. 5).

The time evolution on the 475 K potential temperature level can be seen in Fig. 5. The top fields in the figure represent the hours of sunlight that had fallen on the air masses in the model since 1 August. The middle row contains assimilated fields of ozone profiles from ENVISAT/MIPAS and the bottom row contains fields passively transported from 1 August without any new data assimilated into them. The initial ozone fields were obtained by assimilating ozone profiles into the DIAMOND model for more than two months prior to 1 August. Substantial depletion of ozone can be seen in

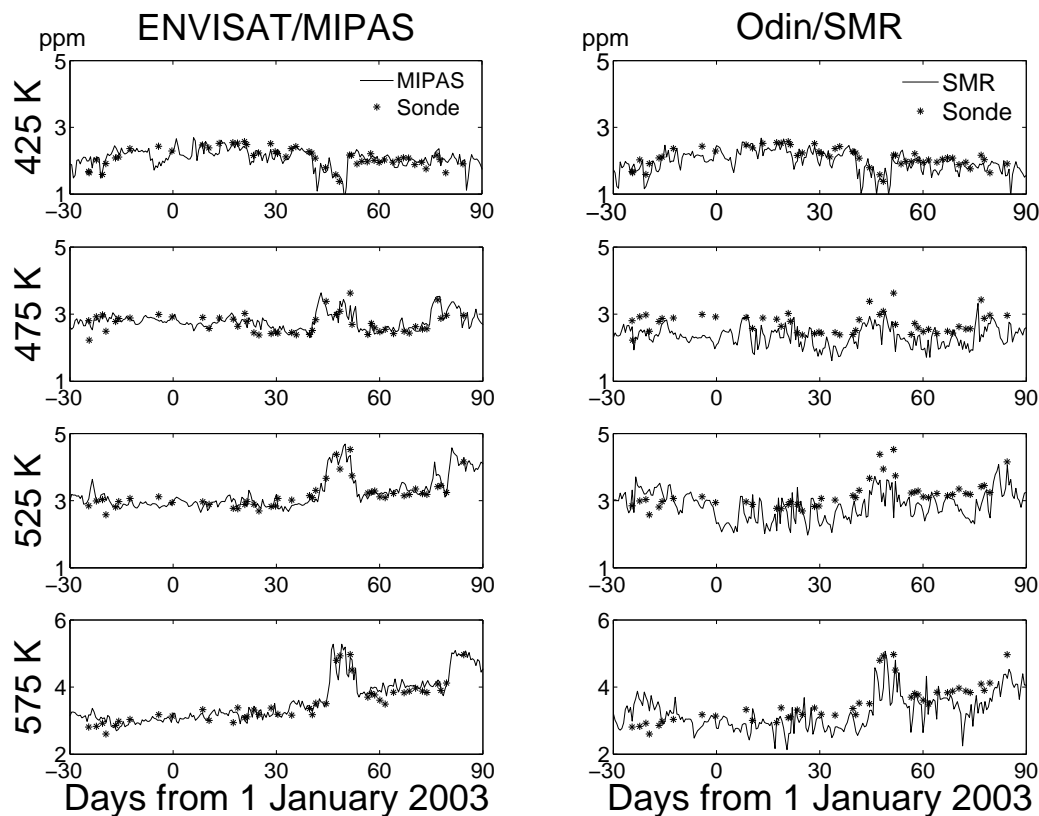


Fig. 10. Assimilated satellite data compared to balloon sonde measurements made over Ny-Ålesund (79° N, 12° E) during the Arctic winter of 2002/2003. Same source of sonde data as in Fig. 8.

the polar vortex as the air masses become exposed to sunlight. Large scale ozone destruction thus occurs first at the outer edges of the vortex in August and reaches the central polar vortex by the end of September.

Quantitative estimates of the 2003 Antarctic ozone depletion have been made using assimilated fields of ozone data from ENVISAT/MIPAS and Odin/SMR. See Figs. 6 and 7 respectively. Both sets indicate that ozone destruction started at the outer edges of the polar vortex in August and spread to the central vortex by mid September. The Odin/SMR fields however indicate significantly less depletion than the ENVISAT/MIPAS fields on the 425 and 475 K potential temperature levels. By mid October the ENVISAT/MIPAS data indicate ozone depletion in the ranges 80–100% and 70–90% on the 425 and 475 K levels respectively while the Odin/SMR data indicates depletion in the ranges 70–90% and 50–70%.

An obvious prerequisite for obtaining correct estimates of polar ozone depletion using the method presented above is that the satellite instruments used to collect the ozone data detects all ozone depletion that occurs in a quantitatively correct manner. Constant systematic errors in the satellite data can be tolerated but they must not change over the time period that is studied.

The assimilated fields obtained from ENVISAT/MIPAS and Odin/SMR data have been compared to balloon sonde measurements in Fig. 8. The stars represent balloon sonde measurements made at the south pole and the solid lines represent the ozone concentrations found in the DIAMOND assimilation model over the same location. One can see that the assimilated fields of ENVISAT/MIPAS data agree fairly well to the balloon sondes except on the 525 K level from late September throughout October when the assimilated fields give ozone concentrations that are roughly 1 ppm higher than the sonde measurements. Otherwise the concentrations in the assimilated fields of ENVISAT/MIPAS data generally stay within 0.25 ppm of the sondes. (A separate paper is currently under preparation in which the assimilation model is used for validating MIPAS data.)

The assimilated fields obtained using Odin/SMR data do on the other hand not agree well with the sonde measurements on the 425, 475 and 525 K potential temperature levels. The assimilated ozone concentrations are too low before large scale depletion occurs and too high after the ozone hole has formed. Estimates of ozone depletion made using this set of data will thus underestimate the ozone depletion. These biases are currently under investigation by the Odin/SMR science team at the Chalmers University of Technology.

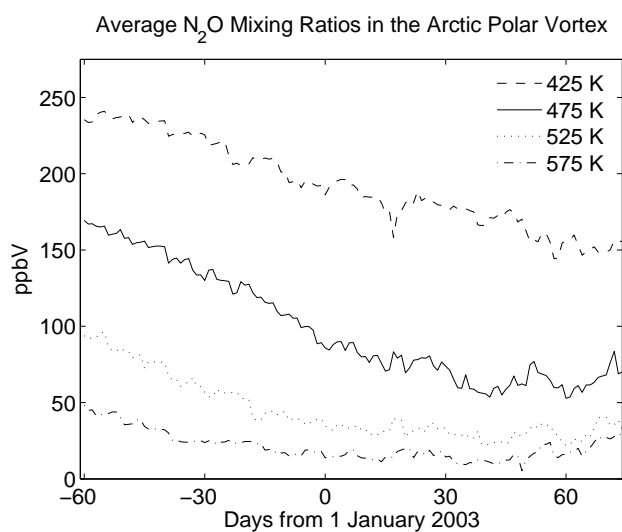


Fig. 11. Time evolution of the average N_2O mixing ratios on different potential temperature levels in the Arctic polar vortex of 2002/2003. The vortex averages have been obtained from assimilated fields of Odin/SMR N_2O data.

7 Vertical transport in the Arctic polar vortex of 2002/2003

The time evolution of vortex average N_2O mixing ratios in the Arctic winter of 2002/2003 are presented in Fig. 11. Substantial vertical transport across the model potential temperature levels are indicated by the falling mixing ratios. We estimate that the potential temperatures of air masses fell by ~ 1 K per day in November and December and by ~ 0.7 K per day in January and early February. The ozone mixing ratios in the vortex increased therefore during the same period due to vertical transport of more ozone rich air masses from higher altitudes. Due to this effect vertical transport has been implemented in the DIAMOND transport model when used to estimate ozone depletion in the Arctic polar vortex of 2002/2003.

8 Ozone depletion in the Arctic Winter of 2002/2003

Temperatures in the 2002/2003 Arctic polar vortex were low enough to sustain polar stratospheric clouds from mid November to mid January leading to 15–30% activation of chlorine reservoir species in January and February (EORCU, 2003). ClO_x catalyzed photochemical destruction of ozone was therefore possible in sunlit areas of the vortex.

Assimilated fields of ENVISAT/MIPAS and Odin/SMR data have been compared to ozone sonde measurements made at Ny-Ålesund (79° N, 12° E), see Fig. 10. The ENVISAT/MIPAS fields agree well to the sonde data while discrepancies can be seen between the sondes and the

Odin/SMR fields. Neither sonde nor satellite data however show any clear signs of ozone depletion. (Ny-Ålesund was located outside the polar vortex for a 10 day period in the latter half of February causing low ozone mixing ratios on the 425 K potential temperature level and elevated mixing ratios on the levels above during this period.)

Ozone depletion occurring in the Arctic polar vortex after 1 January 2003 have furthermore been studied using the methodology outlined in Sect. 6. The time evolution on the 475 K potential temperature level is presented in Fig. 12. Row (A) in the figure describes the number of sunlit hours from 1 January, row (B) describes the temperatures on the respective days and the white lines outline the polar vortex border defined as the contour of maximum gradient in the assimilated N_2O fields. Rows (C) and (D) describe ozone depletion derived using ENVISAT/MIPAS data and rows (E) and (F) describe ozone depletion derived using Odin/SMR data. Vertical transport at a rate of 0.7 K per day was implemented in the vortex during January and the first 10 days of February when deriving rows (C) and (E) while no vertical transport was implemented when deriving rows (D) and (F). By including vertical transport in the passive transport model we observe $\sim 5\%$ additional ozone destruction compared to when vertical transport is not implemented.

The ENVISAT/MIPAS fields in rows (C) and (D) indicate 10–20% ozone destruction in the central polar vortex by the end of January. The fields do on the other hand not indicate any significant destruction of ozone near the outer edges of the vortex which is unlike the pattern observed in the southern hemisphere where large-scale destruction of ozone begins at the vortex outer edges before it reaches the vortex centre. One plausible explanation for the difference is that large scale chlorine activation only occurred in the colder central regions of the 2002/2003 Arctic polar vortex.

The Odin/SMR fields in rows (E) and (F) indicate 20–30% ozone depletion in the central vortex by the end of January. The areas affected by ozone destruction subsequently grow until mid February after which large scale mixing occur across the vortex border masking the effect of the preceding ozone destruction.

9 Conclusions

In this study we have demonstrated how the DIAMOND transport and assimilation model can be used to map and quantify Antarctic as well as Arctic polar ozone depletion. The ozone destruction observed in the Antarctic polar vortex of 2003 was spatially confined to regions where sunlight had returned after the polar night. Large scale ozone depletion thus started at the outer edges of the vortex in August and reached the central region by mid september. The ozone destruction found in the Arctic winter of 2002/2003 was on the other hand mainly confined to the central regions of the vortex.

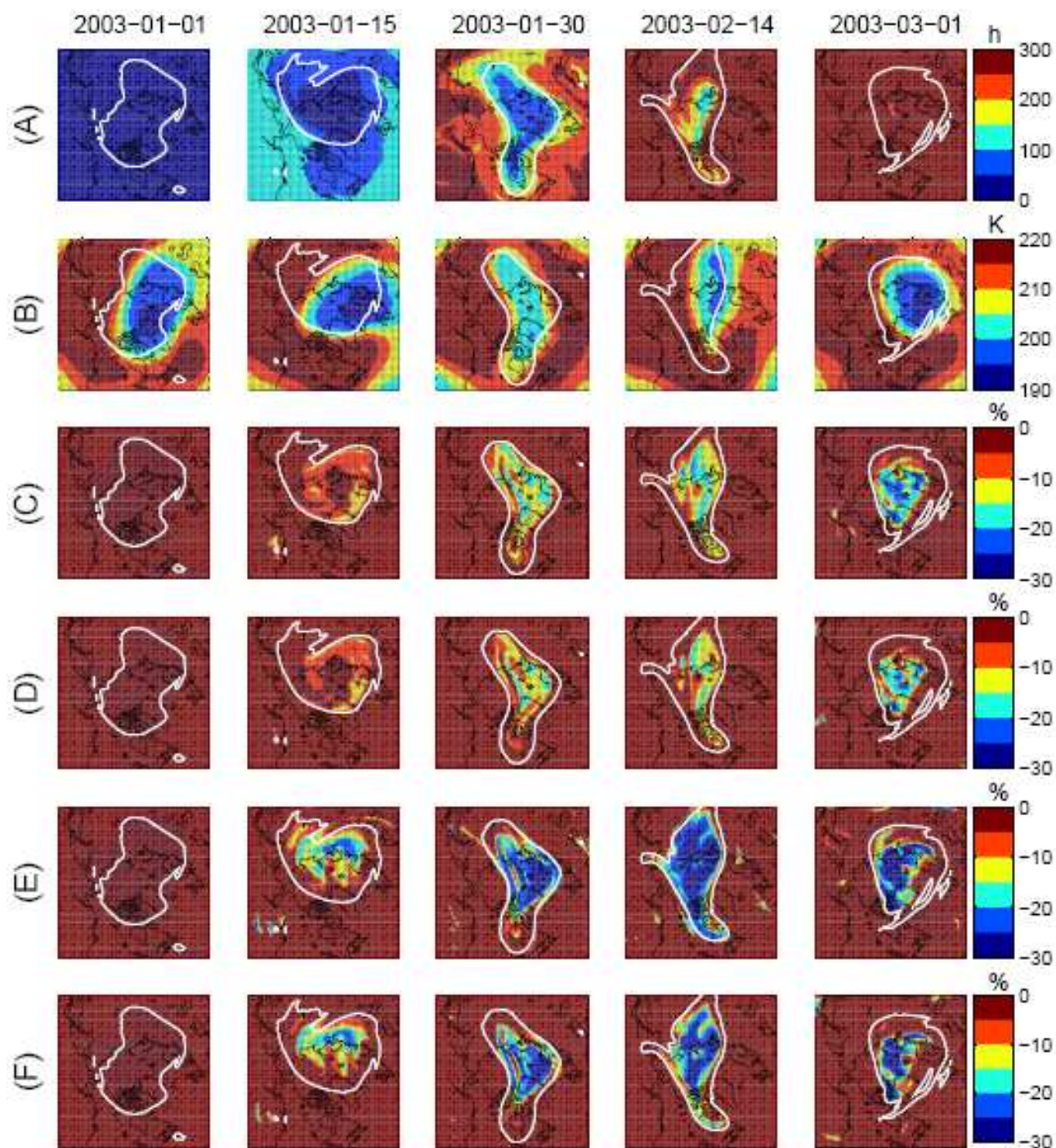


Fig. 12. A study of Arctic ozone depletion on the 475 K potential temperature level during the winter of 2002/2003 made by comparing assimilated fields of ENVISAT/MIPAS and Odin/SMR ozone data to fields passively transported from 1 January. The percentages displayed were calculated using the formula: $100 \times [(\text{active field}) - (\text{passive field})] / (\text{passive field})$. Row (A) describes the number of hours of sunlight that has fallen on the air masses in the model since 1 January. Row (B) describes the temperatures on the 475 K potential temperature level. Rows (C) and (D) describe estimates of ozone depletion made by comparing assimilated fields of ENVISAT/MIPAS data to passively transported fields. Vertical transport was implemented in DIAMOND when deriving row (C) but not when deriving row (D). Rows (E) and (F) describe estimates of ozone depletion made using assimilated fields of Odin/SMR data. Vertical transport was implemented in DIAMOND when deriving row (E) but not when deriving row (F). The solid white lines outline the border of the polar vortex.

Significant differences have been found between estimates of ozone depletion made using data from the ENVISAT/MIPAS and Odin/SMR instruments. In the Antarctic winter of 2003 assimilated fields of ENVISAT/MIPAS data indicated vortex ozone depletion in the ranges 80–100% and 70–90% on the 425 and 475 K levels respectively while Odin/SMR data indicated depletion in the ranges 70–90% and 50–70% on the same levels. By comparing the assimilated fields to balloon sondes released at the south pole we have deduced that this discrepancy can be attributed to systematic errors in the Odin/SMR data. See Fig. 8.

Estimates of Arctic ozone depletion on the 475 K level between 1 January and the end of February are presented in Fig. 12. Using data from ENVISAT/MIPAS we have deduced 10–20% ozone depletion in the central region of the vortex while we have deduced 20–30% depletion using data from Odin/SMR.

The rates of ozone depletion in the Arctic winter of 2002/2003 has been studied using the Match method in Streibel et al. (2006) and by obtaining vortex averages of ozone zonde measurements in Christensen et al. (2005). Both papers describe 1.0–1.25 ppmv accumulated vortex ozone losses on the 475 K level during January and February which corresponds to ~30% destruction of the vortex ozone on that level. The two studies thus agree with the results we have obtained using Odin/SMR data while the ENVISAT/MIPAS instrument seems to be underestimating the ozone depletion in the Arctic winter of 2002/2003.

Acknowledgements. Odin is a Swedish-led satellite project funded jointly by the Swedish National Space Board (SNSB), the Canadian Space Agency (CSA), the National Technology Agency of Finland (Tekes) and the Centre National d'études Spatiales (CNES) in France. We thank the European Space Agency (ESA) for providing ENVISAT/MIPAS data. ECMWF wind and temperature fields have been downloaded from the data centre at Norsk Institutt for Luftforskning (NILU) operated under the EU supported SCOUT project. This work has also been supported by the Chalmers Environmental Initiative (www.miljo.chalmers.se/cei).

Edited by: P. Espy

References

- Christensen, T., Knudsen, B. M., Streibel, M., Andersen, S. B., Benesova, A., Braathen, G. O., Claude, H., Davies, J., De Backer, H., Dier, H., Dorokhov, V., Gerding, M., Gil, M., Henchoz, B., Kelder, H., Kivi, R., Kyrö, E., Litynska, Z., Moore, D., Peters, G., Skrivanova, P., Stübi, R., Turunen, T., Vaughan, G., Viatte, P., Vik, A. F., von der Gathen, P., and Zaitcev, I.: Vortex-averaged Arctic ozone depletion in the winter 2002/2003, *Atmos. Chem. Phys.*, 5, 131–138, 2005, <http://www.atmos-chem-phys.net/5/131/2005/>.
- Daley, R.: *Atmospheric data analysis*, Cambridge University Press, 1991.
- Endemann, M.: MIPAS instrument concept and performance, Proceedings of the European Symposium on Atmospheric Measure-
- ments from Space, ISSN 1022-6656 (European Space Research and Technology Center – European Space Agency, Noordwijk, The Netherlands, 1999), WPP-161, Vol. 1, 29–43, 1999.
- EORCU: The Northern Hemisphere Stratosphere in the 2002/2003 winter, Tech. rep., The European Ozone Research Coordinating Unit, Department of Chemistry, University of Cambridge, UK, 2003.
- Farman, J. C., Gardiner, B. G., and Shanklin, J. D.: Large losses of total ozone in Antarctica reveal seasonal ClO_x/NO_x interaction, *Nature*, 315, 207–210, 1985.
- Khattatov, B. V., Lamarque, J.-F., Lyjak, L. V., Menard, R., Levelt, P., Tie, X., Brasseur, G. P., and Gille, J. C.: Assimilation of Satellite Observations of Long-lived Chemical Species in Global Chemistry Transport Models, *J. Geophys. Res.*, 105(D23), 29135, doi:10.1029/2000JD900466, 2000.
- Menard, R., Cohn, S. E., Chang, L.-P., and Lyster, P. M.: Stratospheric assimilation of Chemical Tracer Observations Using a Kalman Filter, parts i and ii, *Mon. Wea. Rev.*, 128, 2654–2686, 2000.
- Murtagh, D., Frisk, U., Merino, F., Ridal, M., Jonsson, A., Stegman, J., Witt, G., Eriksson, P., Jiménez, C., Megie, G., de la Noë, J., Ricaud, P., Baron, P., Pardo, J. R., Hauchcorne, A., Llewellyn, E. J., Degenstein, D. A., Gattinger, R. L., Lloyd, N. D., Evans, W. F. J., McDade, I. C., Haley, C. S., Sioris, C., von Savigny, C., Solheim, B. H., McConnell, J. C., Strong, K., Richardson, E. H., Leppelmeier, G. W., Auvinen, H., and Oikarinen, L.: An overview of the Odin atmospheric mission, *Can. J. Phys.*, 80, 309–319, 2002.
- Newman, P. A., Harris, N. R. P., Adriani, A., Amanatidis, G. T., Anderson, J. G., Braathen, G. O., Brune, W. H., Carslaw, K. S., Craig, M. S., DeCola, P. L., Guirlet, M., Hipskind, R. S., Kurylo, M. J., Küllmann, H., Larsen, N., Megie, G. J., Pommereau, J.-P., Poole, L. R., Schoeberl, M. R., Stroh, F., Toon, O. B., Trepte, C. R., and Roozendael, M. V.: An overview of the SOLVE/THESEO 2000 campaign, *J. Geophys. Res.*, 107(D20), 8259, doi:10.1029/2001JD001303, 2002.
- Prather, M. J.: Numerical Advection by Conservation of Second-Order Moments, *J. Geophys. Res.*, 91(D6), 6671–6681, 1986.
- Proffitt, M. H. K., Aiken, J. J., Margitan, M., Lovenstein, J. R., and Podolske, A.: Ozone loss inside the northern polar vortex during the 1991–1992 winter, *Science*, 261, 1150–1154, 1993.
- Raspollini, P., Bellotti, C., Burgess, A., Carli, B., Carlotti, M., Ceccherini, S., Dinelli, B. M., Dudhia, A., Flaud, J. M., Funke, B., Höpfner, M., Lopez-Puertas, M., Payne, V., Piccolo, C., Remedios, J. J., Ridolfi, M., and Spang, R.: MIPAS level 2 operational analyses, *Atmos. Chem. Phys.*, 6, 5605–5630, 2006, <http://www.atmos-chem-phys.net/6/5605/2006/>.
- Rex, M., von der Gathen, P., Harris, N. R. P., Lucic, D., Knudsen, B. M., Braathen, G. O., Reid, S. J., De Backer, H., Claude, H., Fabian, R., Fast, H., Gil, M., Kyrö, E., Mikkelsen, I. S., Rummukainen, M., Smit, H. G., Stähelin, J., Varotsos, C., and Zaitcev, I.: In situ measurements of stratospheric ozone depletion rates in the Arctic winter 1991/1992: A Lagrangian approach, *J. Geophys. Res.*, 103(D5), 5843, doi:10.1029/97JD03127, 1998.
- Ridolfi, M., Carli, B., Carlotti, M., von Clarmann, T., Dinelli, B. M., Dudhia, A., Flaud, J. M., Morris, P. E., Raspollini, P., Stiller, G., and Wells, R. J.: Optimized forward model and retrieval scheme for MIPAS near-real-time data processing, *Appl. Opt.*, 39, 1323–1340, 2000.

- Solomon, S.: Stratospheric ozone depletion: A review of concepts and history, *Rev. Geophys.*, 37, 275–316, doi:10.1029/1999RG900008, 1999.
- Streibel, M., Rex, M., von der Gathen, P., Lehmann, R., Harris, N. R. P., Braathen, G. O., Reimer, E., Deckelmann, H., Chipperfield, M., Millard, G., Allaart, M., Andersen, S. B., Claude, H., Davies, J., De Backer, H., Dier, H., Dorokov, V., Fast, H., Gerding, M., Kyrö, E., Litynska, Z., Moore, D., Moran, E., Nagai, T., Nakane, H., Parrondo, C., Skrivankova, P., Stübi, R., Vaughan, G., Viatte, P., and Yushkov, V.: Chemical ozone loss in the Arctic winter 2002/2003 determined with Match, *Atmos. Chem. Phys.*, 6, 2783–2792, 2006, <http://www.atmos-chem-phys.net/6/2783/2006/>.
- Urban, J., Lautie, N., Le Flochmoen, E., Murtagh, D., Ricaud, P., De La Noë, J., Dupuy, E., Drouin, A., El Amraoui, L., Eriksson, P., Frisk, U., Jimenez, C., Kyrola, E., Llewellyn, E. J., Megie, G., Nordh, L., and Olberg, M.: The northern hemisphere stratospheric vortex during the 2002/03 winter: Subsidence, chlorine activation and ozone loss observed by the Odin Sub-Millimetre Radiometer, *Geophys. Res. Lett.*, 31, L07103, doi:10.1029/2003GL019089, 2004.
- Urban, J., Lautie, N., Le Flochmoen, E., Jimenez, C., Eriksson, P., De La Noë, J., Dupuy, E., Ekström, M., El Amraoui, L., Frisk, U., Murtagh, D., Olberg, M., and Ricaud, P.: Odin/SMR limb observations of stratospheric trace gases: Level 2 processing of ClO, N₂O, HNO₃, and O₃, *J. Geophys. Res.*, 110, D14307, doi:10.1029/2004JD005741, 2005.
- Urban, J., Murtagh, D., Lautié, N., Barret, B., Dupuy, E., de La Noë, J., Eriksson, P., Frisk, U., Jones, A., le Flochmoën, E., Olberg, M., Piccolo, C., Ricaud, P., and Rösevall, J.: Odin/SMR Limb Observations of Trace Gases in the Polar Lower Stratosphere during 2004–2005, Proc. ESA Atmospheric Science Conference, 8–12 May 2006, Frascati, Italy, European Space Agency publications, ESA-SP-628, http://earth.esrin.esa.it/workshops/atmos2006/participants/68/paper_frascati2006.pdf, 2006.