



## Comparison between surface and bead based MALDI profiling technologies using a single bioinformatics algorithm

C. Reynes, Stephane Roche, Laurent Tiers, Rodolphe Sabatier, P. Jouin, N. Molinari, Sylvain Lehmann

### ► To cite this version:

C. Reynes, Stephane Roche, Laurent Tiers, Rodolphe Sabatier, P. Jouin, et al.. Comparison between surface and bead based MALDI profiling technologies using a single bioinformatics algorithm. *Clinical Proteomics*, 2007, 2, pp.145-152. 10.1007/BF02752497 . hal-00291842

**HAL Id: hal-00291842**

**<https://hal.science/hal-00291842>**

Submitted on 13 Dec 2017

**HAL** is a multi-disciplinary open access archive for the deposit and dissemination of scientific research documents, whether they are published or not. The documents may come from teaching and research institutions in France or abroad, or from public or private research centers.

L'archive ouverte pluridisciplinaire **HAL**, est destinée au dépôt et à la diffusion de documents scientifiques de niveau recherche, publiés ou non, émanant des établissements d'enseignement et de recherche français ou étrangers, des laboratoires publics ou privés.

## Original Article

# Comparison Between Surface and Bead-Based MALDI Profiling Technologies Using a Single Bioinformatics Algorithm

Christelle Reynès,<sup>1</sup> Stéphane Roche,<sup>2,3</sup> Laurent Tiers,<sup>2</sup> Robert Sabatier,<sup>1</sup> Patrick Jouin,<sup>4</sup> Nicolas Molinari,<sup>5,6</sup> and Sylvain Lehmann<sup>2,3,6,\*</sup>

<sup>1</sup>Laboratoire de Physique Moléculaire et Structurale, Faculté de Pharmacie, Montpellier, France; <sup>2</sup>CNRS, Institut de Génétique Humaine, Montpellier, France; <sup>3</sup>CHU Montpellier, Laboratoire de Biochimie, Hôpital St. Eloi, Montpellier, France; <sup>4</sup>IGF, CNRS UMR5203, INSERM, U661, Univ Montpellier I, Univ Montpellier II, Montpellier, F-34094 France; <sup>5</sup>Institut Universitaire de Recherche Clinique, Faculté Médecine, Montpellier; CHU Nîmes, Service DIM, Nîmes, France; and <sup>6</sup>Université Montpellier I, F-34000, France

### Abstract

In this manuscript, we compared serum profiles obtained with two related technologies, SELDI-TOF and Clinprot, using a single bioinformatic algorithm. These two approaches rely on mass spectrometry to detect proteins and peptides initially selected by binding to various chromatographic matrices. They are proposed by two

different companies, and they are competing for being the reference in high throughput serum profiling for clinical proteomics. This independent evaluation of these two technologies put the light on some of their differences, suggests that they address different proteome fractions and, thus, could be complementary. Taken together, our data could contribute to the parameters relevant for the choice of one technology or the other.

**Key Words:** SELDI; Clinprot; profiling; serum; bioinformatics; clinical proteomics.

### Introduction

Human serum and plasma have an important clinical value for identification and detection

of biomarkers. However, the analysis of these liquids is analytically challenging because of the high dynamic concentration range (over 10 orders of magnitude) of blood constituent protein/peptide species (1). High abundant proteins, such as albumin, immunoglobulins, or

\*Author to whom all correspondence and reprint requests should be addressed:

Sylvain Lehmann, CNRS, Institut de Génétique Humaine, Montpellier, France; CHU Montpellier, Laboratoire de Biochimie, Hôpital St. Eloi, Montpellier, France; Université Montpellier 1, F-34000, France.  
Email: Sylvain.Lehmann@igh.cnrs.fr.

The first two authors contributed equally to this work.

lipoproteins, produce large signals in most proteomic approaches and they mask or interfere with the detection of the other low amount protein components. This situation explains why the discovery of new protein or peptide biomarkers in blood is challenging. To minimize these problems, separation proteomic scheme combining for example chromatography and mass spectrometry (MS) methods were developed (2,3). This is the case of both surface-enhanced laser desorption/ionization time-of-flight (SELDI-TOF) and Clinprot™ approaches (4), which rely on MS to detect proteins and peptides initially selected by binding to various chromatographic matrices (anionic, cationic, IMAC, hydrophobic). These two approaches differ by the format of the chromatographic matrices, surface vs beads, the mass spectrometers, and by the data analysis software used. They are proposed by two different companies, Ciphergen® (Fremont, CA) and Bruker Daltonics® (Bremen, Germany), respectively, and they are competing for being the reference in high throughput serum profiling for clinical proteomics. It is noteworthy that results obtained initially with this technological approach have been often disappointing and controversial (5,6). However, other studies using SELDI-TOF with protein identification and careful study design to avoid nonbiological artefacts were able to demonstrate better outcomes, i.e., discovery and validation of potential cancer biomarkers. An example is given by the multicenter study by Zhang et al. (7) validating three biomarkers for the detection of early stage ovarian cancer. Nevertheless, reduction of bias linked to preanalytical and analytical phases, as well as use of prefractionation methods (4,8–10), will most likely improve the potency of these approaches in the future. In this work, we compared using a single bioinformatic algorithm, serum profiles obtained with SELDI-TOF and Clinprot. This independent evaluation of the relative performance of the two methods could help in choosing a future serum profiling technology.

## Experimental Procedures

### Study Design and Biological Samples

To mimic a serum proteomic profiling experiment run on the two technologies, we analyzed a group of 12 serum samples from C57BL/6 mice (collected between the age of 150 and 250 d). Similar results were obtained on human samples (not shown). Serum (100 µL) were obtained from 12 different mice by jugular puncture as part of a control group for an ongoing serum profiling experiment. The blood was collected in Eppendorf tubes without additive, let clot 20 min at room temperature and centrifuged for 20 min at 3000g. Serum was recovered and frozen at –80°C until used.

### SELDI-TOF Analysis

For SELDI-TOF analysis, each serum sample was diluted 1.5 times with a solution of 8 M urea, 1% CHAPS, and shaken 15 min at room temperature. Denaturated samples were diluted 40 times in the binding buffer (100 mM ammonium acetate pH 4.0, 0.1% Triton) for application on CM10 (weak cation exchange) ProteinChip (Ciphergen). CM10 ProteinChip arrays were pre-equilibrated with 150 µL of binding buffer using a 96-well bioprocessor and incubated 5 min with gentle agitation. After removing the binding buffer from the wells, 100 µL of denaturated samples were added and incubated for 1 h on a plate shaker at room temperature. The wells were washed twice with the binding buffer, once with 100 mM ammonium acetate pH 4.0 and finally once with water. ProteinChip arrays were removed from the bioprocessor and air-dried. Finally, 0.8 µL of  $\alpha$ -cyano-4-hydroxycinnamic (CHCA) acid solution (10% in 50% acetonitrile, 0.25% trifluoroacetic acid) was applied to each spot and the chips were allowed to air-dry again. Mass spectrometric analysis was performed by SELDI-TOF with a PBS-II ProteinChip reader (Ciphergen) using the same

settings for all the samples and for data collection as follows: laser intensity 200, detector sensitivity 7, molecular mass range 1000 to 20,000  $m/z$ , center mass 10,500  $m/z$ , 160 shots per spot. External calibration was done with the All-in-1 Protein Standard II (Ciphergen).

### **ClinProt Analysis**

Each serum sample was diluted 1.5 times in a solution of 8 M urea, 1% CHAPS, and shaken 15 min at room temperature. Ten microliters of MB-WCX (weak cation exchange) binding solution and 10  $\mu$ L of MB-WCX beads were added to 5  $\mu$ L of denatured samples. After a 10-min incubation, microbeads were washed twice using 100  $\mu$ L of the MB-WCX wash solution using the magnetic bead separator (MBS) to collect the microbeads. After removal of the wash solution, 5  $\mu$ L of MB-WCX elution solution was added during 5 min. Microbeads were then collected with the MBS; the supernatant was transferred into a fresh tube containing 5  $\mu$ L of MB-WCX stabilization solution. Finally, 1  $\mu$ L of the eluate was mixed 1:1 with the CHCA solution (prepared as previously described) and 0.5  $\mu$ L was applied on an Anchor chip sample plate. MS analysis was performed on an Ultraflex MALDI-TOF (Bruker Daltonics). The settings used were the following: laser 20 ps (20 MHz), 25–35% power, sum up 1000 satisfactory shots in 100 shot steps, deflector set at 900  $m/z$  and reflector off. The use of the MALDI-TOF in the linear mode, without reflector is adapted to the Clinprot approach that necessitates detection of ions with  $m/z$  values greater than 5000.

### **Exportation and Conversion of the Raw Data**

SELDI spectra were exported as raw data using the function provided in the ProteinChip software v3.2 (Ciphergen Biosystems). The generated file that contains the intensity values at all the  $m/z$  points was imported in R<sup>®</sup> using the function *read.table()*.

R is a language and environment for statistical computing and graphics (<http://www.r-project.org/>). R is available as Free Software under the terms of the Free Software Foundation's GNU General Public License in source code form. The software used for this work is available upon request to C.R. For the Clinprot data, the data are stored in a "fid" format that was converted into the "mzXML" format using the software Compass Xport 1.2.3 (Bruker Daltonics). The data in the latter format were imported in R thanks to the library CaMassClass (11).

### **DATA Processing and Analysis**

#### **Combination of Clinprot Spectra**

Bruker Daltonics recommended performing four replicates per samples from the same microbeads separation probably as a mean to improve the repeatability. Importantly, the four replicates did not exactly have the same  $m/z$  coordinates, as a result of the mass spectrometer variability, and therefore the simple mean between these spectra was not possible. The four spectra were therefore sorted by ascending  $m/z$  and the average of 10 successive points, belonging to the four spectra, was calculated. This decreased the total number of points per spectrum by a factor of two. However, this point density was still higher than that of the SELDI-TOF spectra by a factor 1.2.

#### **Detection of Peaks**

The first step of this detection was represented by the normalization of the spectra. To do so, the mean intensity in the range 1500 to 10,000  $m/z$  was calculated for each individual spectra and for each technology. A normalization coefficient was defined for each spectrum as the ratio global/individual mean and applied. This normalization method is standard and is used in particular in the Ciphergen software. Peak detection was then performed for each spectrum using the

following method: first, the spectrum was divided into two equal parts. In each part, the intensity maximum was identified. Then the boundaries of the corresponding peak were located based on the sign changes of the first derivative of the spectrum. For derivative computation, the spectrum was temporarily smoothed using Friedman's super smoother (12). These boundaries became the new limits of new zones in which a new local maximum was looked for. This sequence was repeated stops until the distance between two boundaries was smaller than the mass accuracy (i.e., 0.1% as provided by the companies and verified on the spectra). Then, based on the distribution of the valley-depths of all the peaks found in all the spectra (for each technology), a threshold was chosen, below which the peaks can be considered as noise. This threshold was determined graphically by locating the intensity below which frequency of points is abnormally high (results not shown).

#### *Alignment of the Spectra*

To compare the data generated within each technology and determine if peaks present in different spectra arisen from the same peptide/protein species, an alignment was realized as follows. The  $m/z$  locations of all the peaks from all the spectra were collected and sorted in ascending order. Then, a hierarchical clustering approach was applied to obtain peak clusters which minimum size corresponded to the mass accuracy value.

#### *Comparison of Peaks Between the Two Technologies*

Once the peaks were selected for both SELDI-TOF and Clinprot (see Detection of Peaks), the clustering was performed between the two technologies using the peaks identified following the alignment of all the spectra. The same clustering method was used, but as one could consider that there is a shift between the

two technologies, the threshold used corresponded to twice the mass accuracy.

### **Results and Discussion**

The purpose of this work was to compare proteomic profiles obtained with two related approaches, SELDI-TOF and Clinprot. These two leading profiling technologies are proposed by two different companies, Ciphergen and Bruker Dynamics, respectively. We carry out this study using as initial step of the profiling, the capture of proteins on comparable weak cation exchange chromatographic matrices, coupled to surfaces (CM10, SELDI-TOF) or microbeads (WCX, Clinprot). Twelve mouse sera were analysed using recommended analytical protocols and the same CHCA matrix for MS. The idea was to mimic a small group of serum samples, as analyzed in many serum profiling studies (13). To avoid bias related to the different software used by the two companies, raw data were exported to the statistical software R before normalization and peak detection (see Experimental Procedures). We focused our analysis on the 1500 to 10,000  $m/z$  range which is optimal with the CHCA MS matrix used.

A first difference between the two types of spectra lied in the density of points generated. In fact, between 1500 and 10,000  $m/z$  the Clinprot spectra were constituted of 106,431  $\pm$  4089 points, whereas the SELDI-TOF had only 48,410 points. These values are chosen by the companies, and are linked to the performances of the two mass spectrometers used. This difference in density was partially accountable for differences in background signal variability, or noise (**Fig. 1A**). In fact the noise was significantly lower in Clinprot, than in SELDI-TOF, as confirmed by its variance of 1461.93 and 6008.22, respectively ( $p < 0.0001$ , F-test). The scale of intensities of the spectra was also different in the two technologies as the range for the Clinprot data went from 0.70 to



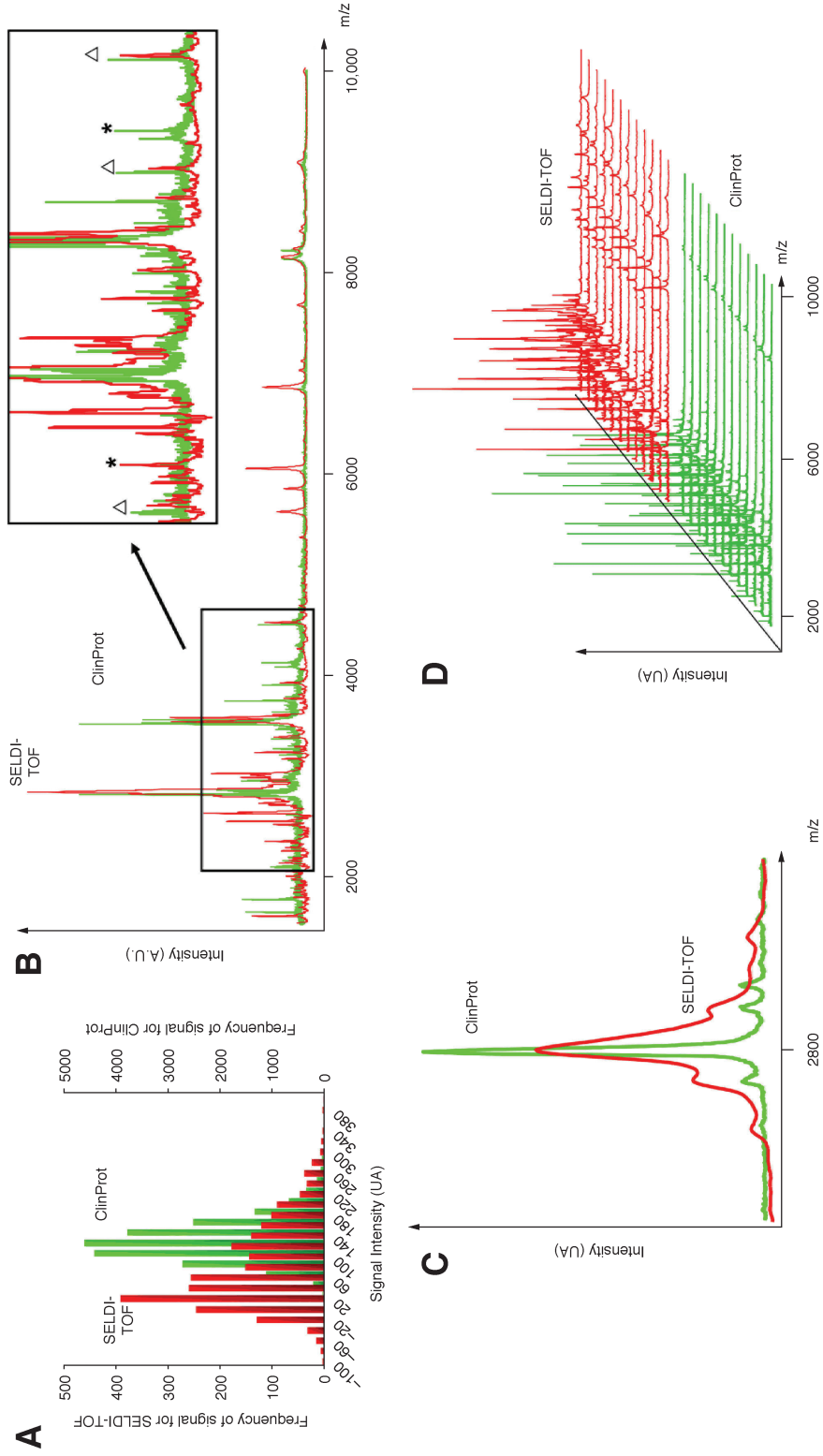


Fig. 1. **(A)** Distribution of the background signal variability, or noise, for ClinProt (green) and SELDI-TOF (red) between 6400 and 6700 m/z. Note that the distribution is more homogeneous in ClinProt. **(B)** General view of a representative SELDI-TOF (red) and ClinProt (green) serum profile. In the insert, some peaks are present in one technology and not in the other (stars), whereas others (triangle) are common to both. **(C)** Comparison of the resolution of the two technologies for the same peak located near 2800 m/z. **(D)** General overview of the 12 spectra from the two technologies between 1500 and 10,000 m/z. The presence of additional peaks in the high m/z ratio is clearly visible in SELDI-TOF.

Table 1  
Summary of the Peaks Detected for the 12 Samples, in Both Technologies,  
and Their Relative Distribution Between Low and High  $m/z$  Ratio

	SELDI-TOF	Clinprot	Statistical analysis (t student)
Total number of peaks detected	80.8 $\pm$ 27.9	80.3 $\pm$ 13.6	$p = 0.9562$
1500 < $m/z$ < 10,000			
Peaks between	55.2 $\pm$ 17.7	75.0 $\pm$ 12.3	$p < 0.005$
1500 < $m/z$ < 5000	(83% $\pm$ 5%)	(96% $\pm$ 1%)	
Peaks between	10.66 $\pm$ 3.42	3.2 $\pm$ 1.03	$p < 0.001$
5000 < $m/z$ < 10,000	(17% $\pm$ 5%)	(4% $\pm$ 1%)	

81828.43 and for SELDI-TOF from  $-11.28$  to  $342.56$ . To facilitate the comparative analysis of the two types of spectra, the values of the raw SELDI intensities were multiplied by 1000 and used as a common arbitrary unit for the intensity. This did not affect the overall analysis of the spectra as the same peaks were detected before and after applying the multiplication factor (not shown). Importantly, for the analysis of the Clinprot data, Bruker Daltonics recommended performing four replicates of each spectrum from the same microbeads separation. To conform to this recommendation, the mean of these four spectra was calculated before analysis (see Experimental Procedures).

As illustrated **Fig. 1B**, the general aspects of SELDI-TOF and Clinprot spectra obtained using similar capture matrices were alike. However, differences in terms of peak presence or absence, height, and resolution were clearly apparent (insert, **Fig. 1B**). The latter parameter is important for the detection and quantification of different peaks; a high resolution leads to rapid comeback to the baseline and a good separation of two peaks without contamination of each species. In our case, the Ciphergen PBSIIc mass spectrometer has a lower resolution, as illustrated in the vicinity of the  $2800\ m/z$  peak (**Fig. 1C**). This difference with the Clinprot Ultraflex I mass spectrometer will be reduced with the new generation of Ciphergen mass spectrometer (PBS4000). Interestingly, the difference in resolution did not dramatically

modify the total number of peaks detected in both technologies (see **Table 1**).

To validate our observation independently from a particular sample, we have performed the analysis of 12 different mouse sera using both technologies (**Fig. 1D**). The detection of the peaks in all the spectra was realized based on sign changes of the derivated spectra. An equivalent number of peaks (close to 80 between 1500 and  $10,000\ m/z$ , see **Table 1**) was detected in both technologies. Interestingly, analysis of the SELDI-TOF spectra with the Ciphergen biomarker software also resulted in an average 80 peaks detected when a signal/noise ratio of three was used (not shown). This validates the performance of our biostatistical method. Importantly, significant differences were observed between the two technologies for the peak distribution in regards to the  $m/z$  values (**Fig. 2A**). In fact in the lower  $m/z$  range, less than  $5000\ m/z$ , Clinprot could detect more peaks than SELDI-TOF, whereas above this value, it was the opposite (**Table 1**). This difference is most likely related to the higher resolution of the Clinprot mass spectrometer that resolves more peaks for small peptides. A high MS resolution is in fact essential for peptide mass fingerprint and identification purposes (**14**). It is also valuable for profiling of small ions, but based on our results it seems less critical here (in the high mass range) because we analyzed nonprotease digested proteins from complex biological samples like serum.

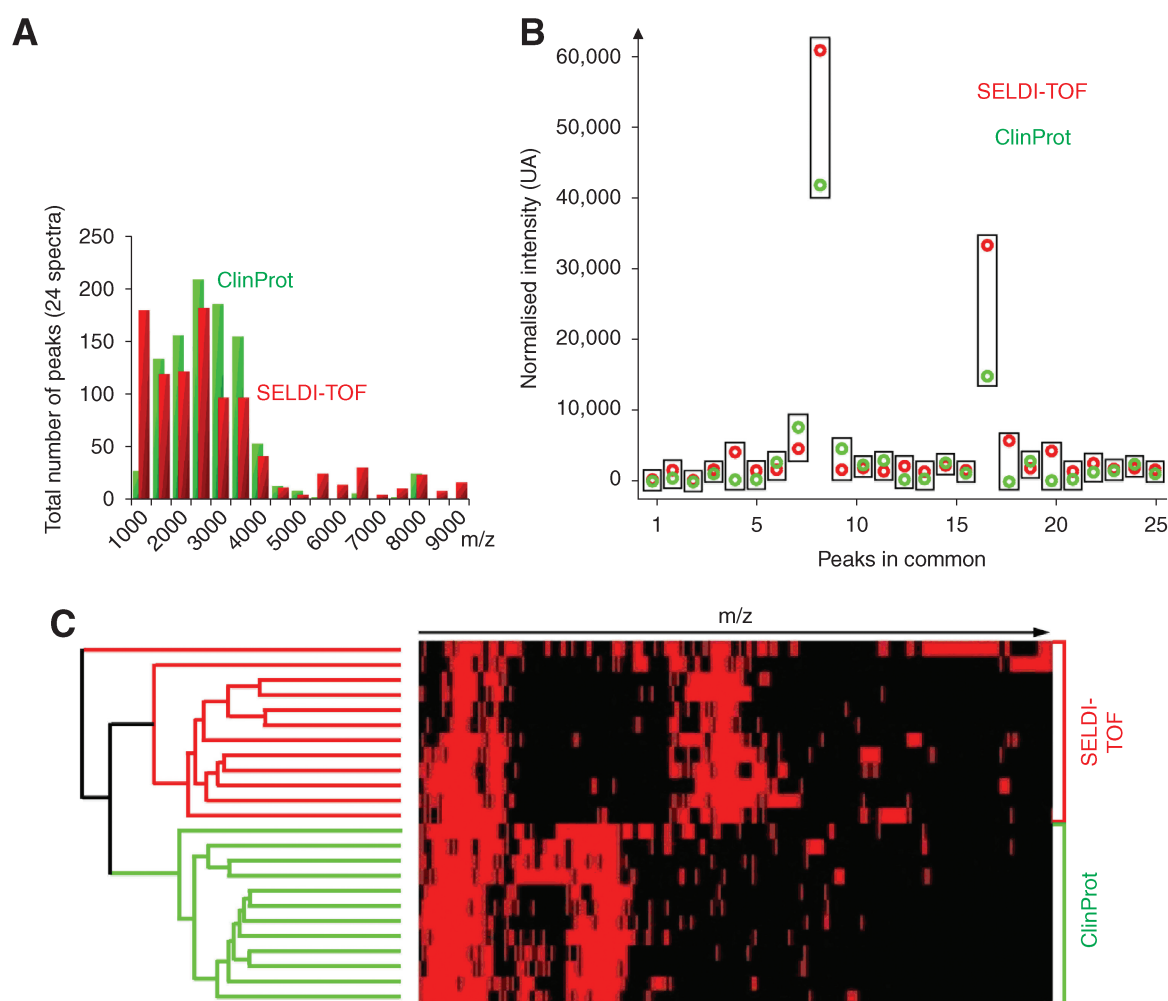


Fig. 2. **(A)** Histogram of the  $m/z$  distribution for the peaks detected in all the spectra in the two technologies. Clinprot identifies more peaks in the lower  $m/z$  whereas SELDI-TOF shows more peaks with high  $m/z$ . **(B)** Comparison of the profiles obtained by the two technologies on the same sample for 25 common peaks: the intensities are correlated despite a bigger variance for peaks with high intensities. **(C)** Representation of the presence (in red)/absence (in black) of all the detected peaks in each spectrum for the two technologies. On the left, stand the peaks common to both technologies and on the right those specific to one of them.

To directly compare the results obtained in the two technologies, the alignment of the peaks between all the spectra was realized using hierarchical clustering with a threshold corresponding to the  $m/z$  accuracy. Twenty five  $m/z$  peaks were detected in more than half the spectra in the two technologies. The intensity of these twenty five peaks was correlated between the two technologies (see example **Fig. 2B**, correlation factor =  $0.84 \pm 0.1$ ).

This suggested that the binding and the detection of common peaks were somehow comparable in the two technologies. However, as we mentioned before, many peaks were detected only in one technology or the other, as illustrated by the result of the hierarchical clustering realized between SELDI-TOF and Clinprot peaks (**Fig. 2C**).

Taken together our results indicate that SELDI-TOF and Clinprot technologies could



achieve a comparable proteomic profiling from unfractionated serum which could then be used for detection of potential blood biomarkers. However, the ClinProt technology allows to analyse, for one sample, not only the subset of proteins retained by the chromatographic surface as in SELDI-TOF, but also the nonretained fraction and the eluted fractions, as on chromatographic columns. This represents an attractive possibility for this technology, which also allows the use of several type of MS matrices for a single capture experiment. The use of a mass spectrometer with a better resolution, here Ultraflex I vs PBSIIc, and for SELDI the new PBS4000 vs PBSIIc, facilitates peaks detection and quantitation (especially in the lower  $m/z$  range) and should be favoured. Interestingly, although some peaks appeared to be present in both profiles using the two technologies, many differences in the profiles still exist suggesting that they address different proteome fractions and could be complementary. In conclusion, our study does not definitely favor the choice of one technology or the other, and additional parameters like purification procedures of candidates, cost, or possibilities for clinical multisite validation, need to be taken into account before choosing between these two approaches.

## Acknowledgments

We thank Prof. Jean-Paul Cristol for his support. Supported by grants from the CHU Montpellier AOI 2004, the EC network of Excellence "Neuroprior" FOOD-CT-2004-506579 and the CNRS.

## References

1. Anderson, N. L. and Anderson, N. G. (2002) The human plasma proteome: history, character, and diagnostic prospects. *Mol. Cell. Proteomics* **1**, 845–867.
2. Pieper, R., Gatlin, C. L., Makusky, A. J., et al. (2003) The human serum proteome: display of nearly 3700 chromatographically separated protein spots on two-dimensional electrophoresis gels and identification of 325 distinct proteins. *Proteomics* **3**, 1345–1364.
3. Yang, Z., Hancock, W. S., Chew, T. R., and Bonilla, L. (2005) A study of glycoproteins in human serum and plasma reference standards (HUPO) using multilectin affinity chromatography coupled with RPLC-MS/MS. *Proteomics* **5**, 3353–3366.
4. Hortin, G. L. (2006) The MALDI-TOF mass spectrometric view of the plasma proteome and peptidome. *Clin. Chem.* **52**, 1223–1237.
5. Petricoin, E. F., Ardekani, A. M., Hitt, B. A., et al. (2002) Use of proteomic patterns in serum to identify ovarian cancer. *Lancet* **359**, 572–577.
6. Coombes, K. R., Morris, J. S., Hu, J., Edmonson, S. R., and Baggerly, K. A. (2005) Serum proteomics profiling: a young technology begins to mature. *Nat. Biotechnol.* **23**, 291–292.
7. Zhang, Z., Bast, R. C., Jr., Yu, Y., et al. (2004) Three biomarkers identified from serum proteomic analysis for the detection of early stage ovarian cancer. *Cancer Res.* **64**, 5882–5890.
8. Issaq, H. J., Conrads, T. P., Janini, G. M., and Veenstra, T. D. (2002) Methods for fractionation, separation and profiling of proteins and peptides. *Electrophoresis* **23**, 3048–3061.
9. Pieper, R., Su, Q., Gatlin, C. L., Huang, S. T., Anderson, N. L., and Steiner, S. (2003) Multi-component immunoaffinity subtraction chromatography: an innovative step towards a comprehensive survey of the human plasma proteome. *Proteomics* **3**, 422–432.
10. Guerrier, L., Thulasiraman, V., Castagna, A., et al. (2006) Reducing protein concentration range of biological samples using solid-phase ligand libraries. *J. Chromatogr. B Analyt. Technol. Biomed. Life Sci.* **833**, 33–40.
11. Tuszynski, J. (2006) caMassClass: processing and classification of protein mass spectra (SELDI) data. <http://cranr-project.org/src/contrib/Descriptions/caMassClass.html> (The caMassClass Software License, Version 1.0).
12. Friedman, J. (1984) A variable span scatterplot smoother: Laboratory for Computational Statistics, Stanford University, report no.: Technical Report No. 5.
13. Fung, E. T., Wright, G. L., Jr., and Dalmaso, E. A. (2000) Proteomic strategies for biomarker identification: progress and challenges. *Curr. Opin. Mol. Ther.* **2**, 643–650.
14. Cottrell, J. S. (1994) Protein identification by peptide mass fingerprinting. *Pept. Res.* **7**, 115–124.