



HAL
open science

The close-in companion of the fast rotating Be star Achernar

Pierre Kervella, Armando Domiciano de Souza, Philippe Bendjoya

► **To cite this version:**

Pierre Kervella, Armando Domiciano de Souza, Philippe Bendjoya. The close-in companion of the fast rotating Be star Achernar. *Astronomy and Astrophysics - A&A*, 2008, In press. hal-00274968

HAL Id: hal-00274968

<https://hal.science/hal-00274968>

Submitted on 22 Apr 2008

HAL is a multi-disciplinary open access archive for the deposit and dissemination of scientific research documents, whether they are published or not. The documents may come from teaching and research institutions in France or abroad, or from public or private research centers.

L'archive ouverte pluridisciplinaire **HAL**, est destinée au dépôt et à la diffusion de documents scientifiques de niveau recherche, publiés ou non, émanant des établissements d'enseignement et de recherche français ou étrangers, des laboratoires publics ou privés.

LETTER TO THE EDITOR

The close-in companion of the fast rotating Be star Achernar[★]

P. Kervella¹, A. Domiciano de Souza², and Ph. Bendjoya²

¹ LESIA, Observatoire de Paris, CNRS UMR 8109, UPMC, Université Paris Diderot, 5 Place Jules Janssen, 92195 Meudon, France

² Lab. H. Fizeau, CNRS UMR 6525, Univ. de Nice-Sophia Antipolis, Observatoire de la Côte d'Azur, 06108 Nice Cedex 2, France

Received ; Accepted

ABSTRACT

Context. The Be stars are massive dwarf or subgiant stars that present temporary emission lines in their spectrum, and particularly in the $H\alpha$ line. The mechanism triggering these Be episodes is currently unknown, but binarity could play an important role.

Aims. Previous observations with the VLT/VISIR instrument (Kervella & Domiciano de Souza 2007) revealed a faint companion to Achernar, the brightest Be star in the sky. The present observations are intended to characterize the physical nature of this object.

Methods. We obtained near-IR images and an H-band spectrum of Achernar B using the VLT/NACO adaptive optics systems.

Results. Our images clearly show the displacement of Achernar B over a portion of its orbit around Achernar A. Although there are not enough data to derive the orbital parameters, they indicate a period of about 15 yr. The projected angular separation of the two objects in December 2007 was less than $0.15''$, or 6.7 AU at the distance of Achernar.

Conclusions. From its flux distribution in the near- and thermal-infrared, Achernar B is most likely an A1V-A3V star. Its orbital period appears similar to the observed pseudo-periodicity of the Be phenomenon of Achernar. This indicates that an interaction between A and B at periastron could be the trigger of the Be episodes.

Key words. Stars: individual: Achernar; Techniques: high angular resolution; Stars: emission-line, Be; Stars: binaries: close

1. Introduction

As the brightest ($m_V = 0.46$) and nearest Be star in the sky, Achernar (α Eri, HD 10144) has been the focus of a lot of interest over the past decades. Its very fast rotation velocity $v \sin i$ is estimated between 220 to 270 km.s⁻¹ and its effective temperature between 15 000 to 20 000 K (Vinicius et al. 2006). Achernar was chosen as the subject of the first VLTI observations, which revealed its extraordinarily distorted interferometric profile (Domiciano de Souza et al. 2003). Different possibilities have been proposed recently to explain the exceptionally high flattening ratio of the photosphere of the star (Jackson et al. 2004; Carciofi et al. 2008). Further interferometric observations have revealed the presence of the stellar wind emitted by the overheated poles of the star (Kervella & Domiciano de Souza 2006), resulting in a slight revision of its flattening ratio. A model of the envelope of Achernar has recently been presented by Meilland (2007). Last year, we discovered a close-in faint companion to Achernar, from diffraction-limited thermal IR imaging with VLT/VISIR (Kervella & Domiciano de Souza 2007). The present Letter reports the follow-up adaptive optics observations in the near-IR domain to characterize this companion, hereafter referred to as Achernar B.

2. Observations

2.1. Imaging

We observed Achernar at several epochs in the second half of 2007 using the Nasmyth Adaptive Optics System (NAOS, Rousset et al. 2003) of the Very Large Telescope (VLT), coupled to the CONICA infrared camera (Lenzen et al. 1998), abbreviated as NACO. Table A.1 gives the list of the observations of Achernar and the standard star δ Phe (HD 9362). We selected the smallest available pixel scale of 13.26 ± 0.03 mas/pix (Masciadri et al. 2003), giving a field of view of $13.6'' \times 13.6''$. Due to the brightness of Achernar, we employed narrow-band filters at wavelengths 1.094 ± 0.015 , 1.644 ± 0.018 , and $2.166 \pm 0.023 \mu\text{m}$ (hereafter abbreviated as 1.09, 1.64, and 2.17) together with a neutral density filter (labeled "ND2_short"), with a transmission of about 1.5%. The raw images were processed using the Yorick¹ and IRAF² software packages in a standard way, except that we did not subtract the negligible sky background. Examples of the images of Achernar A & B and δ Phe are presented in Fig. 1.

2.1.1. Astrometry

To obtain the position of B, we first prepared the images by subtracting a 180° rotated version of each image to itself. This removes the contribution of Achernar A and mainly leaves a pair of positive and negative images of B, corrected from the PSF wing leaks from A (Fig. 2). We then directly measured the position of Achernar B relative to A using a Gaussian fit procedure

Send offprint requests to: P. Kervella

[★] Based on observations collected at the European Southern Observatory, Chile under ESO Program 279.D-5064(A)

Correspondence to: Pierre.Kervella@obspm.fr

¹ <http://yorick.sourceforge.net/>

² IRAF is distributed by the NOAO, which are operated by the Association of Universities for Research in Astronomy, Inc., under cooperative agreement with the National Science Foundation.

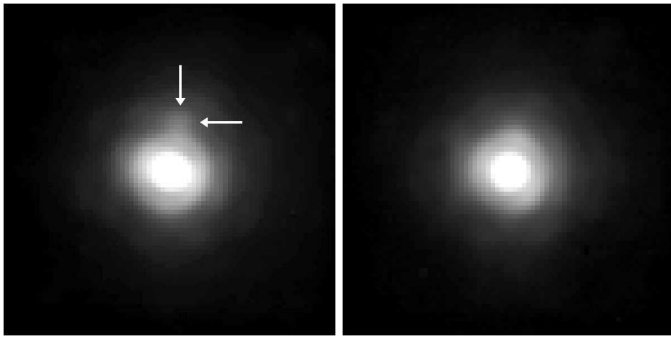


Fig. 1. NACO images of Achernar A & B (left) and δ Phe (right) in the $2.17 \mu\text{m}$ filter obtained on 22 December 2007. The arrows indicate the position of Achernar B. The field of view is $1''$, and the grey scale is normalized for both images to the central part of the PSF.

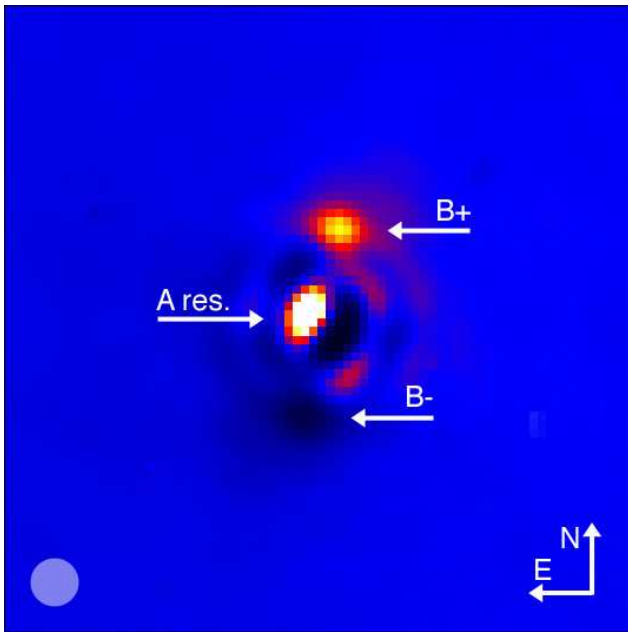


Fig. 2. Result of the subtraction of a 180° rotated version of the image of the Achernar system presented in Fig. 1 (left) from itself. The “B+” and “B-” arrows point at the positions of the positive and negative images of Achernar B, and the “A res.” arrow indicates the A subtraction residuals. The aperture used for photometry is shown in the lower left corner, and the field of view is $1''$ on each side.

on these images. Although Achernar B is clearly visible at all three wavelengths, the Gaussian fit converged essentially in the K band where the high Strehl ratio (compared to the $1.09 \mu\text{m}$ images in particular) results in a better separation of the two objects. The formal fitting error is below ± 0.1 pixel, but we estimate the true uncertainty to ± 0.5 pixel ($0.066''$), due to the presence of residual speckles from Achernar A close to B. The pixel scale and detector orientation introduce negligible systematic uncertainties (Masciadri et al. 2003; Chauvin et al. 2005).

Between epochs 2006.760 (Kervella & Domiciano 2007) and 2007.975, we measured an apparent displacement of B relative to A of $\rho_B = 161 \pm 10$ mas along an azimuth of $\alpha = +113^\circ$ (Fig. 3 and Table 1). According to the *Hipparcos* catalog (ESA 1997), the amplitude of Achernar A’s proper motion on the sky over 1.2 yr is $\rho_{\text{pm}} = 116$ mas along an azimuth of

Table 1. Position of Achernar B relative to Achernar A.

Epoch	λ (μm)	$\Delta\alpha^a$	$\sigma(\alpha)$	$\Delta\delta^a$	$\sigma(\delta)$	R_p^b
2006.760 ^c	11.25	-184.0	7.5	211.0	7.5	12.3
2007.488	2.17	-95.9	6.6	178.6	6.6	8.9
2007.824	2.17	-46.9	6.6	165.8	6.6	7.6
2007.975	2.17	-35.3	6.6	148.2	6.6	6.7

^a Differential coordinates and uncertainties in milliarcseconds (mas).

^b Projected A–B separation in AU.

^c From Kervella & Domiciano de Souza (2007).

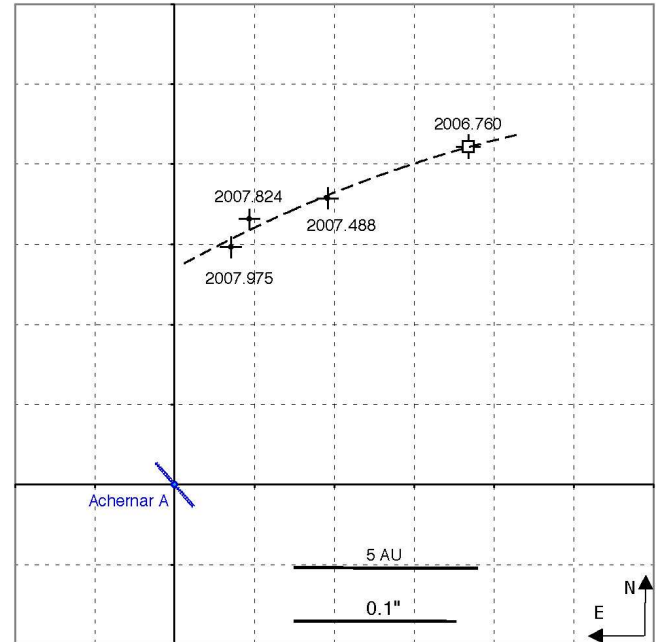


Fig. 3. Position of Achernar B relative to A for four epochs. The open square indicates the VISIR observation (Kervella & Domiciano 2007), and the dots represent the new NACO epochs. The dashed curve is a simple quadratic fit through the data points intended to guide the eye. The segment over Achernar A indicates its projected rotation axis and polar wind as measured by Kervella & Domiciano (2006). The apparent angular sizes of Achernar A and its polar wind are approximately represented to scale.

$\alpha_{\text{pm}} = +115^\circ$. If B was a background source, we would expect an apparent displacement *opposite* in azimuth to A’s proper motion. As B is clearly comoving with A, we can rule out the possibility that it is a background source. As a remark, the parallactic oscillation of the position of Achernar A is small ($\pi = 22.68 \pm 0.57$ mas) compared to the observed displacements, but the presence of B could have affected the *Hipparcos* proper motion and parallax measurement of Achernar. The other epochs listed in Table A.1 give astrometric positions compatible with the trajectory shown in Fig. 3, although with lower accuracy due to poor seeing conditions.

2.1.2. Photometry

For the photometric calibration of our images, we observed a standard star immediately before or after Achernar, δ Phe (HD 9362, G9III) in the same narrow-band filters. It was chosen in the Cohen et al. (1999) catalogue of spectrophotometric standards for infrared wavelengths. Due to the small separation

of the Achernar A-B pair, PSF fitting is not possible for measuring the photometry of B. We therefore proceeded in three steps:

1. We measured classical aperture photometry of Achernar relative to δ Phe, using a large aperture of $1.2''$ in radius.
2. As for the astrometry measurement, we subtracted a 180° rotated version of each image to itself to remove the contribution of Achernar A and leave a positive and a negative image of B, along with limited residuals from A (Fig. 2).
3. We obtained aperture photometry of B from the subtracted images using an aperture radius of $0.040''$ (shown in Fig. 2).

This procedure has ensured that we obtain properly referenced photometry for Achernar A (the influence of B is negligible at step 1), that we can transfer to B at step 3. Step 2 is necessary because B is located inside the wings of the PSF of A. This subtraction is efficient thanks to the good circular symmetry of the PSF produced by NACO. At step 3, we measure the photometry of A and B over the same aperture and within the same images. This allows us to avoid the problem of the variable Strehl ratio of adaptive optics images. The conversion of the measured narrow-band magnitudes to standard *JHK* band magnitudes requires taking the position of the quasi-monochromatic wavelengths within the bands and the shape of the observed spectra into account. Starting from the narrow-band fluxes measured on Achernar and δ Phe, we used the Pickles (1998)³ reference spectra corresponding to their spectral types (B3V and G9III) to recover the corresponding broadband flux ratio. The filter profiles were taken from Bessell & Brett (1988). From the October-December 2007 observations, we derived magnitudes of: $m_J(A) = 0.58_{\pm 0.14}$, $m_H(A) = 0.80_{\pm 0.11}$, $m_K(A) = 0.81_{\pm 0.11}$. These values generally agree with the *JHK* magnitudes of Achernar from the 2MASS (Skrutskie et al. 2006; $0.82_{\pm 0.25}$, $0.87_{\pm 0.32}$, $0.88_{\pm 0.33}$) and Ducati (2002; 0.79, 0.86, 0.88) catalogs, although systematically brighter by 0.1-0.2 mag, particularly in the *J* band. This may be due our narrow-band filters corresponding to the emission lines sometimes present in the spectrum of Achernar. As we may slightly overestimate the brightness of Achernar, we quadratically added an uncertainty of 0.1 mag.

From the magnitudes of Achernar A, the small-aperture photometry obtained at step 3 gives the following broadband magnitudes for Achernar B: $m_J(B) = 4.23_{\pm 0.36}$, $m_H(B) = 4.29_{\pm 0.22}$, $m_K(B) = 4.61_{\pm 0.27}$. The magnitude differences measured between A and B in the three narrow-band filters are: $\Delta m_{1.09} = 3.64_{\pm 0.47}$, $\Delta m_{1.64} = 3.50_{\pm 0.19}$, $\Delta m_{2.17} = 3.80_{\pm 0.25}$, corresponding to an average contrast of ≈ 30 between the two stars in the near-infrared. These magnitudes of B are averages over the October-December 2007 observations (epoch 2007.8) and the error bars contain the statistical uncertainty and the dispersion of all the measurements. The magnitudes at the other epochs (list of the observations in Table A.1) show a marginally significant brightening of B by $-0.7_{\pm 0.4}$ mag in the *K* band between 2007.488 and 2007.975 as it approaches A.

2.2. Spectroscopy

For the spectroscopic observations, we used the S27_3-SH mode of NACO, featuring a slit width of 86 mas on the sky, a spectral resolution of 1500 over the *H* band (dispersion of 0.34 nm/pixel), and an angular pixel scale of 27 mas/pixel. As shown in Fig. 4, the slit was centered on Achernar B. Although most of the light fed into the slit comes from the companion, it is not excluded

that Achernar A may contribute with part of the *H* band spectrum. Details on the 3 recorded ABBA sequences are given in Table A.1. Observations were performed using the classical IR

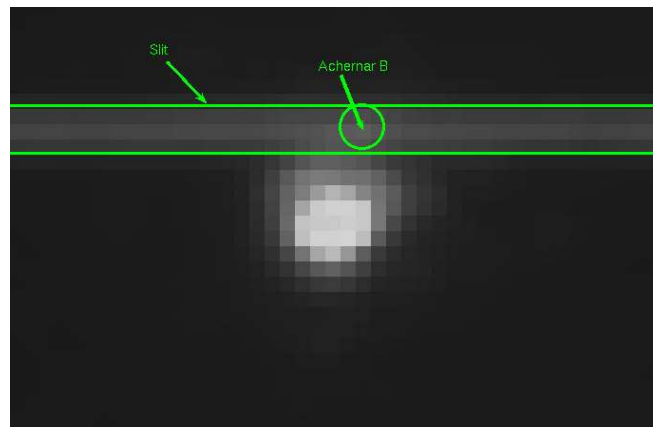


Fig. 4. Position of the NACO slit relative to Achernar A and B.

NACO sequence where the spectrum is recorded with the target positioned at two different slit positions, i.e. the ABBA observing sequence. For the data reduction we applied two different procedures: (1) the classical spectral reduction procedure using the IRAF packages for dark and flat field corrections, and (2) the A-B, B-A procedure. Because the sky background is negligible and the target is rather bright, both procedures give identical results. In the last step, IRAF was used to obtain 1D spectra from weighted averages of 2D spectra and to perform the wavelength calibration. Figure 5 shows the continuum-normalized average spectrum derived from our 12 observations. The atmospheric absorption lines were corrected using the transmission by Lord (1992), but some residuals are visible in particular around $\lambda = 1.66 \mu\text{m}$ (CH_4 and water vapor lines). The absorption lines from the Brackett transitions 11 to 23 of hydrogen are clearly visible in the spectrum and marked by vertical lines.

3. Discussion

The *Hipparcos* parallax of Achernar ($\pi = 22.68 \pm 0.57$ mas; ESA 1997) corresponds to a distance modulus of $\mu = 3.22 \pm 0.06$ mag. The absolute magnitudes of B in the *JHK* and thermal infrared *N* band (average of the PAH1 and PAH2 magnitudes, see Appendix A) are therefore: $M_J = 1.00_{\pm 0.37}$, $M_H = 1.07_{\pm 0.22}$, $M_K = 1.39_{\pm 0.28}$, and $M_N = 1.88_{\pm 0.12}$. The *JHK* absolute magnitudes suggest a spectral type around A1V, slightly fainter than Vega and slightly brighter than Sirius, which have respective magnitudes of $M_{JHK} \approx 0.55$ and 1.56. The *N* band absolute magnitude of Achernar B is also very similar to that of Sirius ($M_N = 1.62$). It thus does not appear to present an infrared excess that would betray a Vega-like dusty envelope. Because Vega itself presents a significant excess in this band ($M_N = 0.55$) due to the presence of dust, it is not comparable.

Our NACO *H* band spectrum of B presents a lot of similarity with early A-type star spectra, as shown in Fig. 5. This is confirmed by the computation of linear Pearson cross-correlation coefficients between our normalized spectrum and the reference *H* band spectra from Ranade et al. (2004)⁴ and Pickles (1998)⁵. As shown in Fig. 6, the spectral types A0V-A4V give the

⁴ http://vo.iucaa.ernet.in/~voj/NIR_Header.html

⁵ <http://www.ifa.hawaii.edu/users/pickles/AJP/hilib.html>

³ <http://www.ifa.hawaii.edu/users/pickles/AJP/hilib.html>

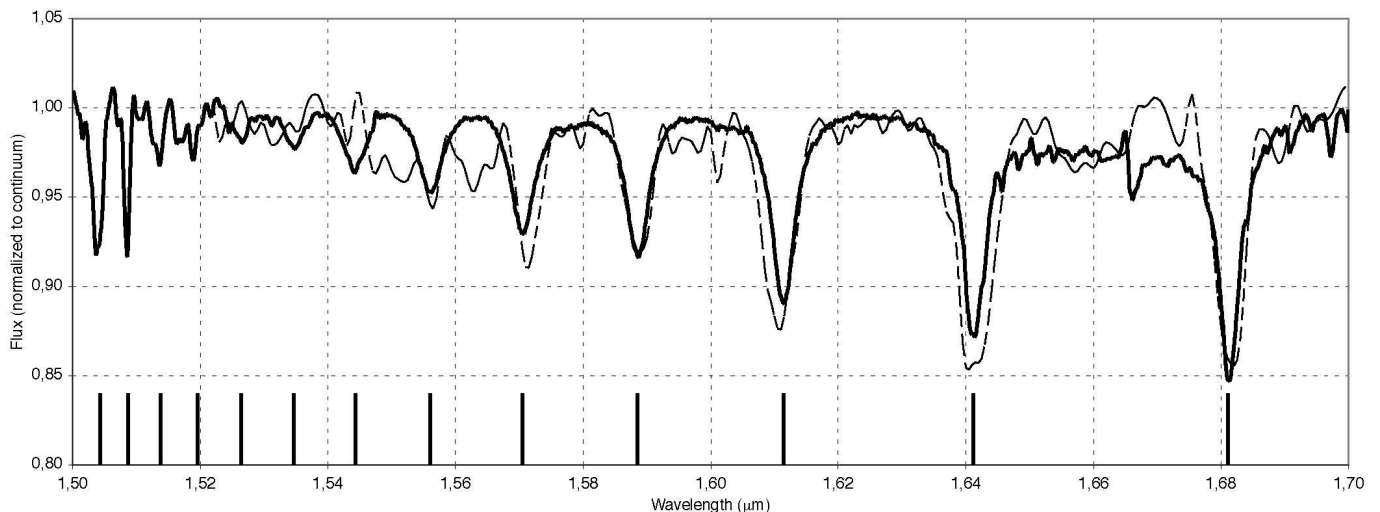


Fig. 5. Average spectrum of Achernar B (solid curve) compared to the H band spectrum of HR 2763 (λ Gem, A3V, dashed curve) from Ranade et al. (2004). The positions of the Brackett transitions 11-4 to 23-4 of hydrogen are marked with vertical lines.

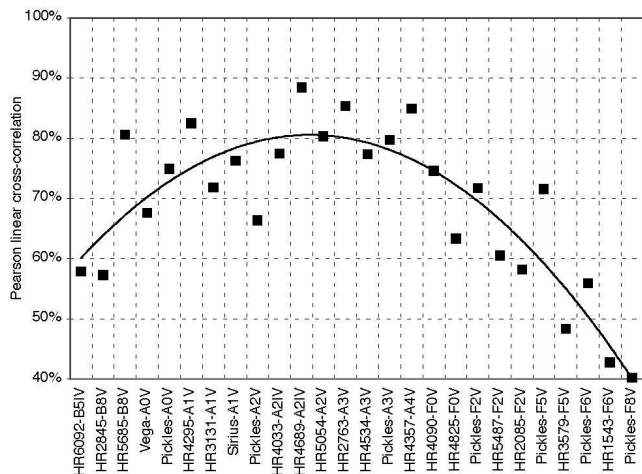


Fig. 6. Cross-correlation between our spectrum of B and reference spectra from Ranade et al. (2004), Meyer et al. (1998), and Pickles (1998).

best correlation with our observation. As shown by Meyer et al. (1998)⁶, the equivalent width (EW) of the 11-4 Brackett line at $1.681 \mu\text{m}$ offers a possibility to test the effective temperature, although it is not monotonic. An integration normalized to the pseudo-continuum between 1.670 and $1.690 \mu\text{m}$ gives an equivalent width of 0.675 nm ($=2.4 \text{ cm}^{-1}$). From Fig. 7 in Meyer et al. (1998), this gives $\log T_{\text{eff}} \approx 3.9 - 4.1$, also compatible with an early A-type star. Such a star has an approximate mass of $\approx 2 M_{\odot}$ (Kervella et al. 2003).

Although we cannot derive the full parameters of Achernar B's orbit from our limited astrometry, the combination of its estimated mass ($\approx 2 M_{\odot}$), the mass of A ($\approx 6.7 M_{\odot}$; Vinicius et al. 2006, see also Harmanec 1988) and the maximum apparent A-B separation ($r_{AB} \approx 12.3 \text{ AU}$) allow us to roughly estimate its period. From Kepler's third law and by assuming an elliptic orbit, we have $T^2 = a^3/M$ where a is the semi-major axis in AU, T the period in years, and M the total mass in M_{\odot} . Assuming that a is equal to the observed maximum separation of 12.3 AU , we obtain a minimum period of $T = 14$ to 15 yr .

⁶ <ftp://ftp.noao.edu/catalogs/medresIR/>

4. Conclusion

From our photometry and spectroscopy, Achernar B is most probably an A1V-A3V star. Our data are currently insufficient for deriving its full orbit, but its minimum period is $\approx 15 \text{ yr}$. Its fast orbital motion should allow the derivation of reliable parameters within a few years. The periodic approach of the companion could be the cause of the observed $\approx 15 \text{ yr}$ pseudo-periodicity of the Be episodes of Achernar (Vinicius et al. 2006). The passage of B at periastron within a few AUs of A could extract material from the equator of A, where the effective gravity is very low. The next such passage should happen around 2010 (Meilland 2007). Achernar appears similar to the B0.2IVe star δ Sco, which has a 1.5 mag fainter companion on a highly eccentric 10.6 yr orbit (Bedding 1993; Miroshnichenko et al. 2001). This suggests that the presence of companions around Be stars should be examined carefully, as it may play a key role in triggering the Be phenomenon.

Acknowledgements. This research made use of the SIMBAD and VIZIER databases at the CDS, Strasbourg (France), and NASA's Astrophysics Data System Bibliographic Services. We also received the support of PHASE, the high angular resolution partnership between ONERA, Observatoire de Paris, the CNRS, and University Denis Diderot Paris 7.

References

- Bedding, T. R. 1993, *AJ*, 106, 1068
- Bessell, M. S. & Brett, J. M. 1988, *PASP*, 100, 1134
- Carciofi, A. C., Domiciano de Souza, A., Magalhães, A. M., Bjorkman, J. E., & Vakili, F. 2008, *ApJ*, 676, L41
- Chauvin, G., Lagrange, A.-M., Lacombe, F., et al. 2005, *A&A*, 430, 1027
- Cohen, M., Walker, R. G., Carter, B., et al. 1999, *AJ*, 117, 1864
- Domiciano de Souza, A., Kervella, P., Jankov, S., et al. 2003, *A&A*, 407, L47
- Domiciano de Souza, A., Kervella, P., Bendjoya, Ph., & Niccolini, G. 2008, *A&A*, 480, L29
- Ducati, J. R. 2002, NASA Ref. Pub. 1294
- The Hipparcos and Tycho Catalogues, 1997, ESA SP-1200
- Jackson, S., MacGregor, K. B., & Skumanich, A. 2004, *ApJ*, 606, 1196
- Harmanec, P. 1988, *Bull. Astron. Inst. Czechoslovakia*, 39, 329
- Kervella, P., Thévenin, F., Morel, P., et al. 2003, *A&A*, 408, 681
- Kervella, P., & Domiciano de Souza, A. 2006, *A&A*, 453, 1059
- Kervella, P., & Domiciano de Souza, A. 2007, *A&A*, 474, L49
- Lenzen, R., Hofmann, R., Bizenberger, P., & Tusche, A. 1998, *SPIE* 3354, 606
- Lord, S.D. 1992, NASA Technical Memor. 103957
- Masciadri, E., Brandner, W., Bouy, H. et al. 2003, *A&A*, 411, 157
- Meilland, A. 2007, Ph.D. Thesis, Université de Nice-Sophia Antipolis

- Meyer, M. R., Edwards, S., Hinkle, K. H., & Strom, S. E. 1998, *ApJ*, 508, 397
Miroshnichenko, A. S., Fabregat, J., Bjorkman, K. S et al. 2001, *A&A*, 377, 485
Pickles, A. J. 1998, *PASP*, 110, 863
Ranade, A., Gupta, R., Ashok, N. M., & Singh, H. P. 2004, *BASI*, 32, 311
Rousset, G., Lacombe, F., Puget, F., et al. 2003, *Proc. SPIE* 4839, 140
Skrutskie, R. M., Cutri, R., Stiening, M. D., et al. 2006, *AJ*, 131, 1163
Vinicius, M. M. F., Zorec, J., Leister, N. V., & Levenhagen, R. S. 2006, *A&A*, 446, 643

Online Material

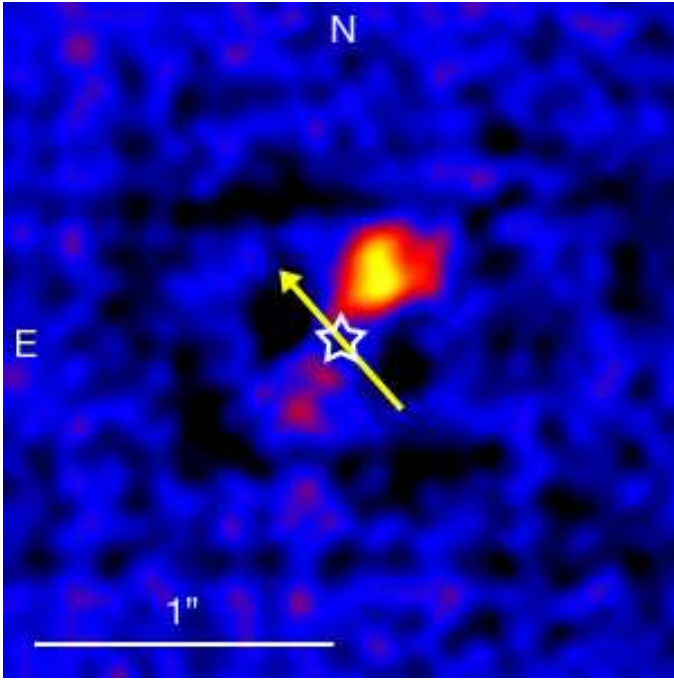


Fig. A.1. Residual of the subtraction of the VISIR PAH2 image of η Ser from the image of Achernar in the same band. The contribution of Achernar B is clearly visible. The arrow indicates the rotation axis of Achernar A.

Appendix A: Thermal infrared imaging at $11.25\ \mu\text{m}$

Kervella & Domiciano de Souza (2007) did not detect Achernar B in the $11.25\ \mu\text{m}$ images (PAH2 band) of the system obtained with the VLT/VISIR instrument in BURST mode. A re-analysis of these observations has shown that the reason for this non-detection was the introduction of noise during the normalization and subtraction of the PSF reference star (δ Phe). For our VISIR program on the B[e] star MWC300 (Domiciano de Souza et al. 2008), we obtained BURST mode images of another PSF calibrator (η Ser) 3.4 hours before the observations of Achernar (under similar seeing conditions). Since η Ser is brighter than δ Phe, we could obtain a cleaner PSF-subtracted image of Achernar B, as presented in Fig. A.1. From this image, aperture photometry over a $0.22''$ diameter gives a flux ratio of 1.74% between Achernar B and A (the ratio of peak intensities is 2.14%). From the $16.8\ \text{Jy}$ absolute flux derived by Kervella & Domiciano de Souza (2007) for A, the contribution from B is therefore $0.3\ \text{Jy}$ at $11.25\ \mu\text{m}$. This value is comparable to the $0.4\ \text{Jy}$ flux derived by Kervella & Domiciano de Souza (2007) at $8.59\ \mu\text{m}$.

Table A.1. Log of the NACO observations of Achernar and δ Phe.

Date / UT	Star	Filt.	$\Delta t \times N^a$	$\sigma (")^b$	AM ^c
<i>Imaging</i>					
2007-06-27T08:48:52	α Eri	2.17	2×5	0.102	1.46
2007-08-01T10:07:20	α Eri	2.17	2×5	0.082	1.19
2007-08-09T09:51:54	α Eri	2.17	2×5	0.088	1.20
2007-10-27T04:41:17	α Eri	2.17	2×30	0.091	1.20
2007-10-27T04:46:27	α Eri	1.64	2×22	0.092	1.20
2007-10-27T04:50:06	α Eri	1.09	2×20	0.141	1.20
2007-10-27T05:45:31	δ Phe	2.17	4×8	0.094	1.19
2007-10-27T05:48:24	δ Phe	1.64	4×6	0.096	1.20
2007-10-27T05:50:22	δ Phe	1.09	4×5	0.122	1.20
2007-10-28T03:01:11	α Eri	2.17	1.5×40	0.083	1.21
2007-10-28T03:04:21	α Eri	1.64	1.5×30	0.084	1.20
2007-10-28T03:07:18	α Eri	1.09	1.5×27	0.104	1.20
2007-10-28T03:37:24	δ Phe	2.17	3×9	0.084	1.10
2007-10-28T03:39:15	δ Phe	1.64	3×8	0.090	1.10
2007-10-28T03:44:21	δ Phe	1.09	3×7	0.102	1.10
2007-11-01T00:09:42	α Eri	2.17	0.4×150	0.096	1.54
2007-11-01T00:12:42	α Eri	1.64	0.4×110	0.103	1.53
2007-11-01T00:15:35	α Eri	1.09	0.4×100	0.175	1.51
2007-11-07T02:22:55	α Eri	2.17	0.4×150	0.093	1.21
2007-11-07T02:25:12	α Eri	1.64	0.4×110	0.097	1.20
2007-11-07T02:28:02	α Eri	1.09	0.4×100	0.132	1.20
2007-11-07T02:37:56	δ Phe	2.17	1×25	0.089	1.11
2007-11-07T02:39:46	δ Phe	1.64	1×22	0.094	1.10
2007-11-07T02:41:25	δ Phe	1.09	1×20	0.119	1.10
2007-12-22T01:39:46	α Eri	2.17	1.2×50	0.073	1.23
2007-12-22T01:44:21	α Eri	1.64	1.2×37	0.071	1.24
2007-12-22T01:46:51	α Eri	1.09	1.2×34	0.087	1.24
2007-12-22T02:26:40	δ Phe	2.17	1×25	0.076	1.23
2007-12-22T02:31:48	δ Phe	1.64	1×22	0.070	1.24
2007-12-22T02:34:57	δ Phe	1.09	5×4	0.093	1.25
<i>Spectroscopy</i>					
2007-10-27T05:22:23	α Eri	H	0.5×100	1.28	1.23
2007-10-27T05:23:26	α Eri	H	0.5×100	1.28	1.23
2007-10-27T05:24:20	α Eri	H	0.5×100	1.26	1.24
2007-10-27T05:25:24	α Eri	H	0.5×100	1.23	1.24
2007-10-28T03:20:30	α Eri	H	0.5×100	1.25	1.19
2007-10-28T03:21:33	α Eri	H	0.5×100	1.17	1.19
2007-10-28T03:22:27	α Eri	H	0.5×100	1.20	1.19
2007-10-28T03:23:31	α Eri	H	0.5×100	1.19	1.19
2007-12-22T02:04:11	α Eri	H	1.0×50	0.91	1.26
2007-12-22T02:05:14	α Eri	H	1.0×50	0.91	1.26
2007-12-22T02:06:08	α Eri	H	1.0×50	0.83	1.27
2007-12-22T02:07:10	α Eri	H	1.0×50	0.85	1.27

^a The exposure times Δt are given in seconds. N is the number of individual exposures.

^b For the imaging observations, $\sigma (")$ is the FWHM of the star image as measured on the images themselves, and for the spectroscopic observations, we list the observatory seeing in the visible.

^c AM is the airmass.