



HAL
open science

Modeling the concentric organization of lattices and path-regular networks

Luciano da F. Costa

► **To cite this version:**

Luciano da F. Costa. Modeling the concentric organization of lattices and path-regular networks. 2008. hal-00258893v1

HAL Id: hal-00258893

<https://hal.science/hal-00258893v1>

Preprint submitted on 25 Feb 2008 (v1), last revised 28 Feb 2008 (v2)

HAL is a multi-disciplinary open access archive for the deposit and dissemination of scientific research documents, whether they are published or not. The documents may come from teaching and research institutions in France or abroad, or from public or private research centers.

L'archive ouverte pluridisciplinaire **HAL**, est destinée au dépôt et à la diffusion de documents scientifiques de niveau recherche, publiés ou non, émanant des établissements d'enseignement et de recherche français ou étrangers, des laboratoires publics ou privés.

Luciano da Fontoura Costa

*Institute of Physics at São Carlos, University of São Paulo,
PO Box 369, São Carlos, São Paulo, 13560-970 Brazil*

(Dated: 21st Feb 2008)

The concentric organization of a complex network with respect to a reference node can provide rich information about both the topology and the dynamics of complex networks. Particularly, measurements such as the hierarchical number of nodes, the hierarchical degree and the intra-ring degree have been recently shown (arXiv:0802.0421 and arXiv:0802.1272) to define important features of non-linear dynamics taking place in complex networks. The current article reports theoretical models capable of reproducing with high accuracy the concentric organization, expressed in terms of the three just-mentioned measurements, of two important types of networks, namely orthogonal lattices and path-regular structures. The potential of such models is illustrated with respect to their application to systematic characterization of non-linear dynamics in those two types of networks, more specifically the prediction of avalanches of spikes and their properties. While the considered orthogonal lattices were found not to exhibit avalanches, the path-regular networks imply avalanches depending of their parametric configurations. Copyright L. da F. Costa (21st Feb 2008).

PACS numbers: 87.18.Sn, 05.40Fb, 89.70.Hj, 89.75.Hc, 89.75.Kd

‘This is the foundation of the city: a net which serves as passage and as support.’ (Invisible Cities, I. Calvino)

I. INTRODUCTION

Given a complex network (e.g. [1–5]), its structural properties can be quantified and analysed by taking several measurements and investigating their specific distributions and relationships [5]. In case the network underlies specific types of dynamics, the obtained measurements can also be related to specific dynamical features, an approach which underlies the so-called structure-dynamics paradigm (e.g. [3, 4]).

Though complex networks can be characterized while taking into account statistics (e.g. mean and standard deviation) of the obtained measurements, defining the *global* analysis approach [5], it is often important to consider local structural or dynamical features. Two main approaches are possible: node- and edge-based. For instance, in the former case, the consideration of the individual node degrees or clustering coefficients can allow the identification of deviating connectivity patterns, such as hubs (see also [6]). Many are the node-based measurements which have been proposed and used for the characterization and classification of complex networks. Edge-based measurements are much less common. Interestingly, edge-based measurements can be immediately obtained by the line graph method of transforming complex networks (e.g. [7, 8]) and taking the traditional node-based measurements, but this approach has also been rarely applied.

One node-based family of measurements, called *hierarchical* or *concentric* (e.g. [9–12]), is particularly interesting because it allows the characterization of the connectivity surrounding each node in terms of a progressive range of topological scales, giving rise to a *multiscale* ap-

proach. More specifically, given a network Γ and one of its nodes i , a series of *concentric levels* or rings can be defined corresponding to the set $C_1(i)$ of immediate neighbors of node i (level 1), the set $C_2(i)$ of the immediate neighbors of $C_1(i)$, and so forth until the network is completely covered. Once such concentric levels have been determined, it becomes possible to obtain a whole series of hierarchical measurements [9–12], including the hierarchical number of nodes, the hierarchical degree and the intra-ring degree at each level h . The *hierarchical number of nodes* at level h of a network with respect to a given reference node corresponds to the number of elements in the set $C_h(i)$. The *hierarchical degree* at level h of a node i has been defined [12] as the number of edges extending between levels h and $h+1$ (this concept can be immediately extended to directed networks). The *intra-ring degree* at level h of a node i is the number of edges connecting pairs of nodes within level h . The potential of such measurements, as well as of additional concentric features, has been illustrated with respect to several theoretical and real-world investigations (e.g. [9–12]).

More recently [13–15], it was shown that important types of non-linear dynamics, such as integrate-and-fire (e.g. [16]) neuronal activation in presence of facilitation (e.g. [17]), are intrinsically underlain by the concentric organization of the respective networks. More specifically, it has been shown [13] that the important dynamical phenomena of avalanches of activation [15] and activation confinement within communities [14, 18] are intrinsically defined by the hierarchical number of nodes, hierarchical degrees and intra-ring degrees. Such a finding motivated the introduction of *equivalent models* of the structure of the network under analysis, allowing the estimation of important dynamical features while considering only a handful of equivalent nodes, which were enough to capture the intrinsic dynamical features underlying the non-linear phenomena of avalanches and activation confine-

ment.

Such results motivate further attention to be given to the concentric organization of complex networks. Because important structural and dynamical properties of the network under analysis are ultimately related to its hierarchical number of nodes, hierarchical degrees and intra-ring degrees, it would be particularly interesting to develop theoretical models of the concentric organization of specific types of complex networks which could allow systematic analytical investigations of the structure and dynamics of networks without resorting to computational simulations involving several realizations of each network type. This represents precisely to the main objective of the current work. More specifically, we develop analytical models of the hierarchical organization — expressed in terms of the hierarchical number of nodes, hierarchical degrees and intra-ring degrees — for two particularly relevant theoretical models of complex networks, namely orthogonal lattices and the path-regular complex networks introduced recently as a member of the larger family of knitted networks [19, 20].

Though ubiquitous in traditional dynamical systems, regular lattices such as orthogonal and hexagonal grids have rarely been considered in complex network research. Yet, these networks are particularly important because they exhibit completely regular node degrees. In addition, they are completely deterministic instead of stochastic (such as Erdős-Rényi networks). In this work we restrict our attention to toroidal (periodic) orthogonal grids with degree 4. The other type of complex network model considered here, namely the path-regular networks, has been introduced recently [19, 20] as a special type of knitted network. Basically, a path regular network, henceforth abbreviated as PN, is obtained starting with N isolated nodes and performing M paths encompassing all these nodes (recall that a path never repeats a node or an edge). As a consequence most nodes exhibit identical degrees equal to $2M$ (i.e. each path contributes with 2 edges for each node). In addition to being intrinsically related to the somewhat overlooked path-organization of networks, PN structures have been found (e.g. [20–22]) to yield particularly uniform values of almost every possible measurements, not only between nodes but also between different realizations with the same size and average degree. PN networks are also natural candidates for modeling real-world structures underlain by paths, such as neuronal networks, as well as transportation and communication systems. The PN model was later modified [13] in order to imply all nodes with identical degree. This can be easily achieved by connecting the extremities of each of the M paths and not allowing a path to go through an edge belonging to a previous path. This type of network, henceforth abbreviated as *PI* is considered henceforth in this article.

This work is organized as follows. It starts by briefly reviewing the basic concepts in complex network concentric characterization, as well as introducing the regular lattices and path-regular networks, and proceeds by

developing the analytical models of the regular lattices and path-regular networks and showing the adherence of the predictions obtained by using such models against real measurements obtained by considering ensembles of whole networks. The potential of the developed models is illustrated with respect to the study of avalanches in lattice and path-regular complex neuronal networks with integrate-and-fire dynamics.

II. CONCENTRIC CHARACTERIZATION OF COMPLEX NETWORKS: BASIC CONCEPTS

A complex undirected and unweighted network Γ can be completely represented in terms of its *adjacency matrix* K , of dimension $N \times N$. Each edge between two nodes i and j , $i, j \in \{1, 2, \dots, N\}$, implies $K(j, i) = K(i, j) = 1$. The absence of connection between those two nodes is expressed as $K(j, i) = K(i, j) = 0$. Two nodes are *adjacent* whenever they share an edge. Two edges are adjacent if they share a node. A sequence of adjacent edges is a *walk*. A walk which never repeats a node or edge is called a *path*. Given a node i , the nodes which are adjacent to it are henceforth called its *immediate neighbors*. The set of immediate neighbors of a node i is abbreviated as $C_1(i)$; the set of immediate neighbors of the nodes in $C_1(i)$ defines the new set $C_2(i)$, and so on. The set $C_h(i)$ is herein called the *concentric (or hierarchical) level (or ring)* of the network Γ with respect to the reference node i . The whole set of concentric levels, from $h = 0$ (i.e. the original node i) up to a maximum level H is called the *hierarchical organization* of the complex network γ with respect to node i . The number of nodes in $C_h(i)$ (i.e. the cardinality of this set, herein represented as $|C_h(i)|$) is called the *hierarchical number of nodes* at level h with respect to i . The number of edges extending between the concentric levels h and $h + 1$ is called the *hierarchical degree* of node i at level h . The number of edges connecting pairs of nodes inside a given level h is the *intra-ring degree* of node i at level h . An example of a network and respective hierarchical measurements can be found in Section IV, Figures 1 and Figures 2.

III. ORTHOGONAL LATTICES AND THE PATH-REGULAR NETWORKS

In an infinite *orthogonal lattice*, each node is connected to its four adjacent neighbors. A finite orthogonal lattice with periodic (or toroidal) boundary conditions of dimension $L \times L$ includes a total of $N = L^2$ nodes and $E = 2N$ edges. The average degree therefore is given as $\langle k \rangle = 2E/N = 4$, with null standard deviation, implying all nodes to have the same degree. Figure 1 depicts a 5×5 finite orthogonal lattice with periodic boundary conditions.

The *knitted* family of complex networks was introduced recently [19, 20] in order to represent networks

defined by *paths*, instead of star connectivity. Two main types of such networks have been proposed so far: path-transformed BA networks (PA) and path-regular networks (PN). The former is obtained by path-star transforming BA networks, so that the edges in each star is transformed into a respective path. As a consequence of such a construction procedure, such networks exhibit a scale-free distribution of shortest-path lengths. The second category of knitted networks, namely the path-regular (PN) structures, is substantially simpler and can be obtained as follows: (i) start with N isolated nodes; (ii) perform M path-walks encompassing all nodes. By emphpath walk it is meant a walk where no edge or node are repeated. PN networks have been found to exhibit particularly uniform connectivity, yielding similar values for several measurements taken amongst nodes or amongst different realizations of the same configuration (e.g. [20–22]). More recently [13], a version of the PN networks, henceforth abbreviated as PI, was proposed which is still more uniform than the PN structures. This type of network is obtained by incorporating two additional conditions on the PN generation, namely: (a) the extremities of each of the M path-walks are connected; and (b) the path-walks are not allowed to cover edges or nodes belonging to the previous path-walks. As a consequence of such additional constraints, the PI networks result with all nodes having identical degree equal to $2M$.

It is interesting to make a brief discussion of the possible relationships between the orthogonal lattice and a PI network with the same number of nodes and degree. Though both these structures would be undistinguishable as far as the node degree is concerned (all nodes have degree equal to 4), almost any other possible measurements result quite distinct distributions, reflecting the fact that the node degree provides but a degenerate (incomplete) characterization of the network overall connectivity. One particularly relevant aspect in which the orthogonal lattice and PI networks differ one another concerns the number of paths of several lengths between any two adjacent nodes. It is also interesting to observe that, while the connectivity of orthogonal lattices is deterministic, the connections in a PI (or PN) network are stochastic, yielding diverse structures for different realizations of the same parametric configuration (recall that the PI network has just two parameters, its size N and the number of incorporated path-walks M).

IV. ANALYTICAL MODEL OF THE CONCENTRIC ORGANIZATION OF ORTHOGONAL LATTICES

Because of the orthogonal symmetry of this discrete structure, identical hierarchical organizations are obtained with respect to *any* of its nodes. In this section we develop an analytical expression for the hierarchical number of nodes, hierarchical degree and intra-ring de-

gree of infinite and finite orthogonal lattice of any size $N = L^2$.

We start by considering the infinite case. Starting at any node i , we have $n_0(i) = |C_0(i)| = 1$ nodes; $n_1(i) = |C_1(i)| = 4$ nodes; $n_2(i) = |C_2(i)| = 8$ nodes; $n_3(i) = |C_3(i)| = 12$; $n_4(i) = |C_4(i)| = 16$; and so on up to the last concentric level H . More generally, it can be shown that $n_h(i) = |C_h(i)| = 4h$. Similarly, we have that $k_h(i) = 2n_h(i) + 4$ and $a_h(i) = 0$ for $h = 0, 1, \dots, H$.

The case of finite orthogonal lattices is more properly analysed by considering separately the cases in which L is even or odd. In the former situation, i.e. L even, the hierarchical number of nodes and hierarchical degrees are symmetric with respect to $h = \lfloor L/2 \rfloor$, while the intra-ring degrees are all zero. More specifically, in the case of finite orthogonal lattices with L even, we have

$$n_h(i) = \begin{cases} 1 & \text{if } h = 0 \\ 4h & \text{if } h = 1, 2, \dots, \lfloor L/2 \rfloor - 1 \\ n_{H-h}(i) & \text{if } h = \lfloor L/2 \rfloor + 1, \dots, H \\ 2L - 2 & \text{if } h = \lfloor L/2 \rfloor \end{cases}$$

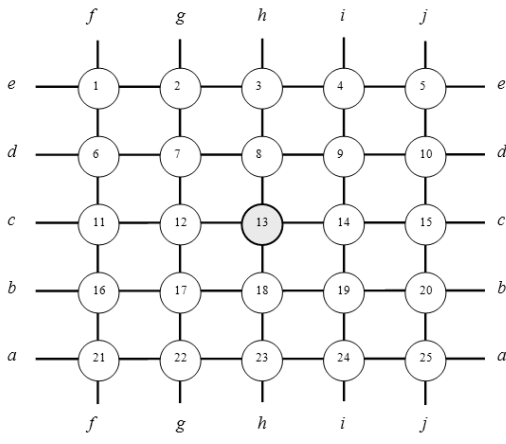
$$k_h(i) = \begin{cases} 4 & \text{if } h = 0 \\ 2n_h(i) + 4 & \text{if } h = 1, 2, \dots, \lfloor L/2 \rfloor - 1 \\ k_{H-h-1}(i) & \text{if } h = \lfloor L/2 \rfloor, \dots, H - 1 \\ 0 & \text{if } h = H \end{cases}$$

$$a_h(i) = 0, \text{ for any } h$$

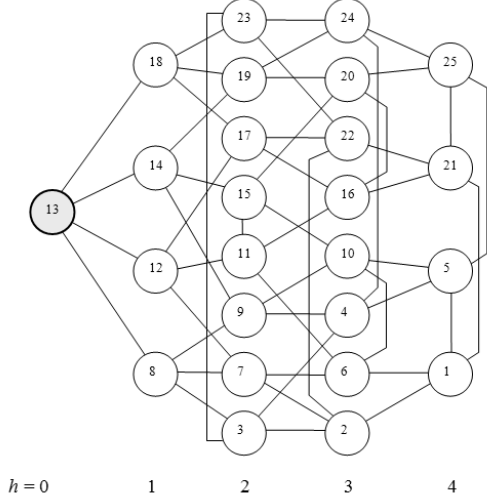
The finite orthogonal lattice for L odd yields a somewhat more complex situation. Though the hierarchical number of nodes is still symmetric with respect to $h = \lfloor L/2 \rfloor$, the hierarchical degrees are not, while the intra-ring degrees are no longer null. Figure 1 illustrates the periodic orthogonal lattice with dimension 5×5 (a) and its respective concentric organization (b).

Figure 2 shows the hierarchical number of nodes $k_h(i)$, the hierarchical degrees $k_h(i)$, and the intra-ring degrees $k_h(i)$ of the finite 5×5 orthogonal lattice in Figure 1.

Interestingly, the intra-ring degrees are no longer zero, but increase towards a plateau equal to 4 for $h \geq \lfloor L/2 \rfloor$. The hierarchical number of nodes, hierarchical degrees and intra-ring degrees of a finite toroidal lattice with L odd can be calculated as follows



(a)



(b)

FIG. 1: The 5 orthogonal lattice (a) and its respective concentric (or hierarchical) organization (b) involving 5 levels.

$$n_h(i) = \begin{cases} 1 & \text{if } h = 0 \\ 4h & \text{if } h = 1, 2, \dots, \lfloor L/2 \rfloor - 1 \\ n_{H-h+1}(i) & \text{if } h = \lfloor L/2 \rfloor + 1, \dots, H \\ 2L - 2 & \text{if } h = \lfloor L/2 \rfloor \end{cases}$$

$$k_h(i) = \begin{cases} 4 & \text{if } h = 0 \\ 2n_h(i) + 4 & \text{if } h = 1, 2, \dots, \lfloor L/2 \rfloor - 1 \\ k_{H-h-1}(i) + 4 & \text{if } h = \lfloor L/2 \rfloor, \dots, H - 1 \\ 0 & \text{if } h = H \end{cases}$$

$$a_h(i) = \begin{cases} 0 & \text{if } h = 0, 1, \dots, \lfloor L/2 \rfloor - 1 \\ 2 & \text{if } h = \lfloor L/2 \rfloor \\ 4 & \text{if } h = \lfloor L/2 \rfloor + 1, \dots, H \end{cases}$$

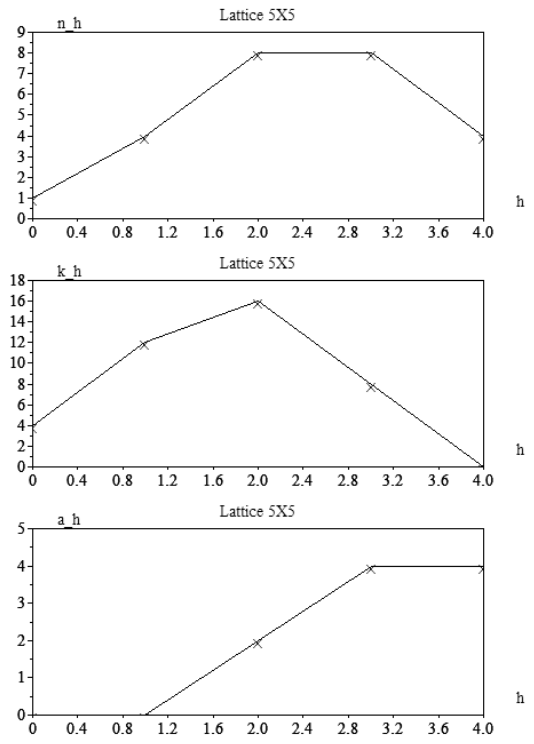


FIG. 2: The hierarchical number of nodes $n_h(i)$, the hierarchical degree $k_h(i)$ and the intra-ring degree $a_h(i)$, with respect to node 13, of the orthogonal lattice in Fig. 1.

V. ANALYTICAL MODEL OF THE CONCENTRIC ORGANIZATION OF PATH-REGULAR NETWORKS

Because of stochastic symmetry, similar concentric organizations are obtained for a PI network considering any of its nodes as reference. In order to obtain an analytical model of the concentric organization of the PI networks, we start by developing a recursive mean field formulation taking into account the concentric organization with respect to any node i . Henceforth, we represent the average degree of the PI network as $\langle k \rangle$ and, because similar results are obtained for any reference node i , we omit the reference node identification (e.g. $n_h(i)$ becomes n_h).

Starting with any of its nodes i , we have $n_0 = 1$; $k_0 = \langle k \rangle$ and $a_0 = 0$. At the next concentric level, one node will be found attached to each of the edges emanating from the reference node i , so that $n_1 = \langle k \rangle$. Now, each of these $\langle k \rangle$ nodes in the first concentric level $h = 1$ of the network will have $\langle k \rangle - 1$ free edges (recall that one of the edges was already used to connect to i). These $\langle k \rangle - 1$ edges can be used to implement intra-ring connections within $h = 1$ or for connecting to the subsequent level $h = 2$. Let us represent the remainder of nodes not yet used while at a level h as R_h , so that $R_1 = N - \langle k \rangle - 1$ (i.e. the total of nodes minus the reference node and the $\langle k \rangle$ nodes

belonging to $h = 1$). Each of the available $k - 1$ edges of each of the $\langle k \rangle$ nodes at $h = 1$ will have a probability of staying inside that level given as $p_h = n_h/R_{h-1} = n_h/(R_h + n_h)$. Therefore, the intra-ring degree of level h can be estimated as being equal to $a_h = 0.5 \langle k \rangle * (\langle k \rangle - 1) * p_h$, leaving a total of $k_h = \langle k \rangle * (k - 1) * (1 - p_h)$ edges for implementing connections with the next hierarchical level.

Unlike the situation from level $h = 0$ to 1, the number of nodes which will be incorporated into level $h = 2$ is not equal to the number of edges between levels $h = 1$ and $h = 2$ (i.e. the hierarchical degree k_1) because more than one of such edges may connect to a same node at the next layer $h = 2$. The number of nodes which will be incorporated into level $h = 2$ can be estimated as being equal to $n_2 = \eta(n_1, E_1, R_1)$, where $\eta()$ is the function defined below and $E_h = k_h/n_h$.

$$\eta(n_h, E_h, R_h) = \begin{cases} R_h & \text{if } R_h \leq E_h \\ R_h \left[1 - \left(1 - \frac{E_h}{R_h} \right)^{n_h} \right] & \text{if } R_h > E_h \end{cases}$$

This function is obtained by considering that the first of the n_h nodes at level h will connect to E_h nodes, the second of the nodes at level h will connect to $(R_h - E_h)/R_h$ nodes, and so forth.

The above basic reasoning can now be extended with respect to level $h = 2$, and so on, until all the N nodes are incorporated into the network. Therefore, the complete procedure for obtaining the concentric organization in terms of the hierarchical number of nodes, hierarchical degree and intra-ring degree, is given as follows

```

n0 = 1; a0 = 0; R0 = N - 1; k0 = <k>; E0 = <k>;
h = 1;
while n_{h-1} > 0 and R_{h-1} > 0
  n_h = η(n_{h-1}, E_{h-1}, R_{h-1});
  R_h = R_{h-1} - n_h;
  if R_h > 0
    a_h = 0.5(<k> n_h - k_{h-1})n_h/R_{h-1};
    k_h = (<k> n_h - k_{h-1})R_h/R_{h-1};
    if n_h > 0
      E_h = k_h/n_h;
    end
  end
  h = h + 1;
end

```

The above algorithm has been verified to be capable of reproducing with impressive accuracy the hierarchical number of nodes, hierarchical degrees and intra-ring degrees of PI networks. Figure 3 illustrates the predicted and actual (averaged over 500 realizations) values of these three measurements with respect to PI networks of different size and average degree.

VI. APPLICATION EXAMPLE: ANALYTICAL INVESTIGATION OF INTEGRATE-AND-FIRE AVALANCHES

Complex neuronal networks with integrate-and-fire dynamics have been found [13, 15] to exhibit avalanches of spikes under specific circumstances (e.g. type of network, size, average degree). Interestingly, such a critical phenomenon has been explained [13] as a consequence of the concentric organization of the respective networks. More specifically, given any network, it is possible to obtain its *equivalent model* by estimating the hierarchical number of nodes, hierarchical degrees and intra-ring degrees. Once such measurements are obtained, the equivalent model is immediately given as shown in Figure 4, i.e. each equivalent node represents the respective $n_h(i)$ original nodes (these values are taken as the threshold of the respective equivalent nodes), the weights of the connections between successive concentric levels correspond to the respective hierarchical degrees $k_h(i)$, while the weights of the self-connections are given by the intra-ring degrees $a_h(i)$.

It has been verified that such a model yields accurate predictions of the respective dynamics, including avalanches and confinement. In other words, most of the relevant structural features of the original network are captured by the equivalent model, except the inherent variability of degrees between nodes (see also [14], where the equivalent model was enhanced to incorporate groups of nodes with distinct degrees). Therefore, it becomes possible to investigate important dynamical features of complex networks by considering their respective equivalent concentric models. In particular, the analytical models of the concentric organization of the orthogonal lattice and PI networks developed in this article can be immediately applied in order to obtain the respective equivalent models, paving the way for comprehensive investigations of the structure-dynamics relationship.

In this section we apply the analytical models of the orthogonal lattice and PI networks in order to investigate in more depth their dynamics regarding the spiking avalanche phenomenon. More specifically, we investigate the occurrence of avalanches by considering the two following activation ratios

$$r1 = \frac{n_c(i)}{n_{c+1}} \frac{k_c(i)}{k_c(i) + k_{c-1}(i) + a_c(i)}$$

$$r2 = \frac{n_c(i)}{n_{c-1}} \frac{k_{c-1}(i)}{k_c(i) + k_{c-1}(i) + a_c(i)}$$

where c refers to the concentric level containing the largest number of nodes. Ratio $r1$ quantifies the efficiency in which the activation from level c affects the equivalent node in level $h + 1$; the ratio $r2$ quantifies such an efficiency with respect to the transfer of activation to the equivalent level $h - 1$. Therefore, the larger these ratios, the higher the chances of avalanches (recall that

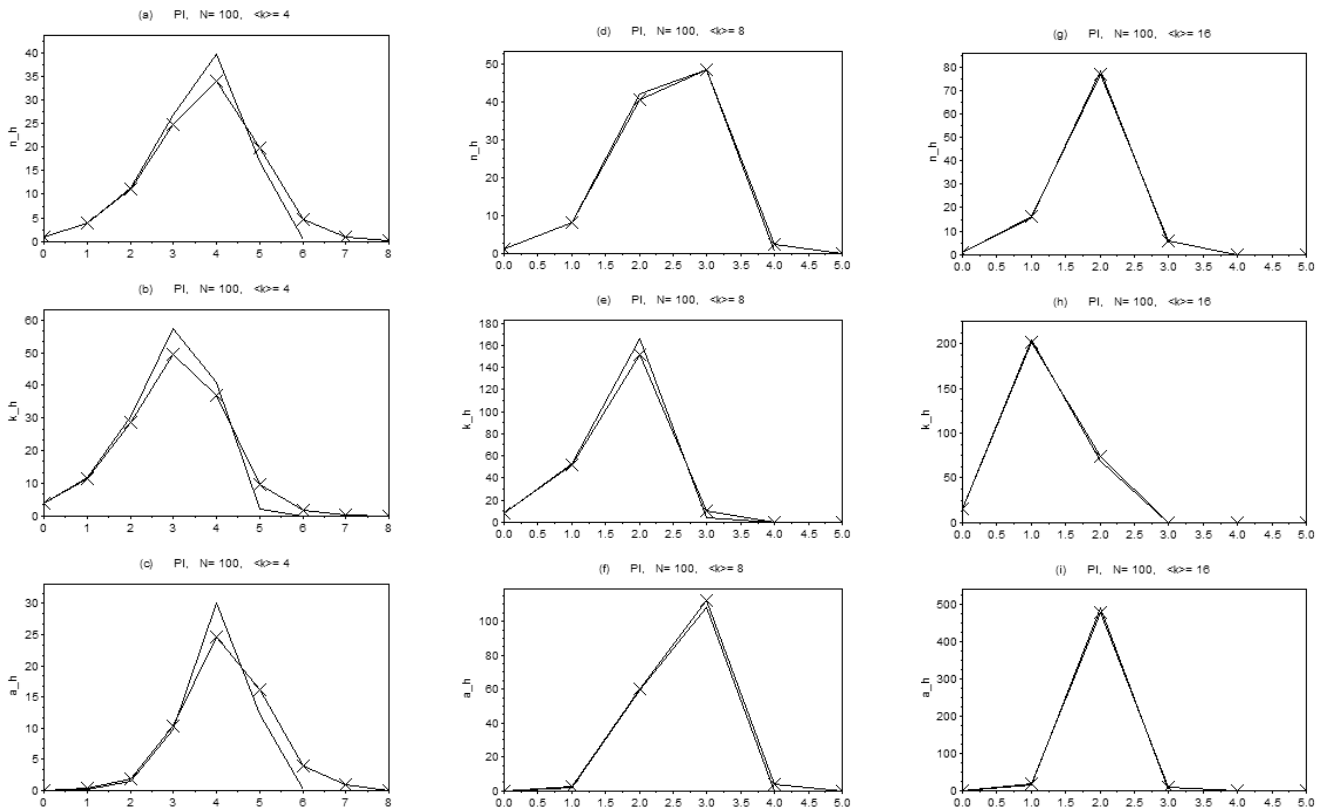


FIG. 3: The predicted and real values (asterisks) of the hierarchical number of nodes $n_h(i)$, the hierarchical degree $k_h(i)$ and the intra-ring degree $a_h(i)$ considering PI networks with several sizes and average degrees.

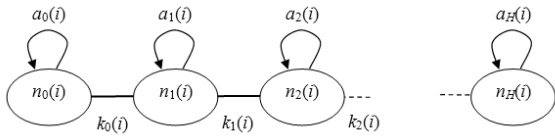


FIG. 4: The equivalent model of a complex network is completely specified by the respective hierarchical number of nodes, hierarchical degrees and intra-ring degrees.

in the equivalent model, the threshold of each equivalent node corresponds to the respective hierarchical number of nodes). In particular, avalanches should be observed for $r_1, r_2 > 1$. It should be observed that these activation ratios specify not only the chances of avalanches, but also their relative sharpness, in the sense that avalanches obtained for larger ratio values tend to be more abrupt along time. At the same time, sharper avalanches also tend to imply larger amplitudes.

Unlike in previous works [13–15, 23, 24], here we consider integrate-and-fire dynamics with action potential

limitation, in the sense that the activation conveyed by the axons are always equal to 1, which is more biologically-realistic than the previously adopted distribution of the activation. At the same time, each original neuron j had its threshold set as $T(j) = 5$.

The hierarchical number of nodes, hierarchical degrees and intra-ring degrees of PI networks with different sizes (i.e. $N = 50, 100, 500$ and 1000) and average degrees (i.e. $\langle k \rangle = 46810$ and 12) were obtained by using the respective analytical model developed in Section V, and the ratios r_1 and r_2 calculated as above. Figure 5 shows the obtained scatterplot of $r_1 \times r_2$. Several interesting features can be observed in this figure. First, the cases for fixed average degree defined level-sets along the diagonal from the lower-left to the higher-right side of the scatterplot. As all cases for $\langle k \rangle = 4$ and 6 , irrespectively of the network size N , fall within the rectangle from the origin up to the critical point $(1, 1)$, such configurations are unlikely to produce avalanches. The networks with $\langle k \rangle = 8$ present a transient behavior, being near the transition of the critical region, so that avalanches are expected to be sporadically verified for such an average degree, especially for $N = 50$. All other configurations are likely to exhibit avalanches. The cases for $\langle k \rangle = 12$ are ex-

pected to imply particularly sharp avalanches. The configurations with $N = 50$ and $\langle k \rangle = 10$ and 12 , as well as $N = 500$ and $\langle k \rangle = 12$, yielded the highest products $r_1 r_2$. Interestingly, no clear order of the values of N can be observed along the level-sets.

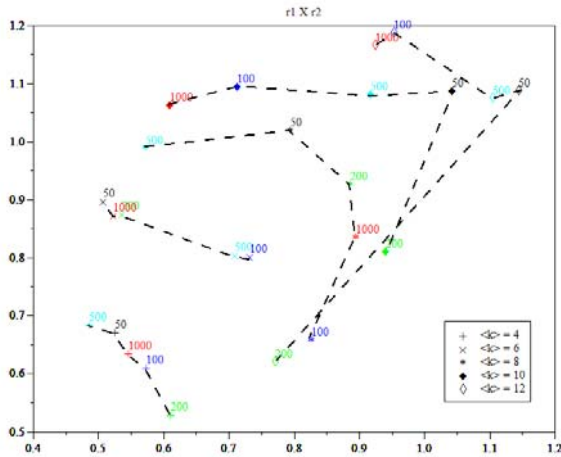


FIG. 5: The scatterplot of $r_1 \times r_2$ obtained for several configurations of PI networks yielded by the analytical model of the concentric organization reported in this article. The numbers above each point, as well as the respective colors, indicate the network sizes.

Figure 6 shows the scatterplot of $r_1 \times r_2$ obtained for 200 realizations of configurations defined by $\langle k \rangle = 4, 6, 8, 10, 12$ and $N = 50$ by considering the whole original networks. As expected, we now have clouds of points instead of the averages produced by the analytical models. Indeed, observe that the analytical averages in Figure 5 tend to appear near the middle of the corresponding clouds in Figure 6. Interestingly, the case for $\langle k \rangle = 6$ exhibits a split, with a few cases appearing near $(r_1 = 1.3, r_2 = 0.65)$.

Figures 7 to 9 illustrate the spiking dynamics obtained in complete PI networks with $N = 50$ and $\langle k \rangle = 4, 8$ and 12 , with the activation source places at the neuron number 1. More specifically, each of these figures include the spikegram (a) showing the spikes for each neuron along time, and the total number of spikes (b) along time. The case $\langle k \rangle = 4$ shown in Figure 7 failed to produce any avalanche, as would be expected from its respective position in Figure 5. The PI configuration for $\langle k \rangle = 8$, shown in Figure 8, implied an avalanche characterized by a relatively gradual transition along the transient regime, followed by saw oscillations (see [13]). The configuration for $\langle k \rangle = 12$ depicted in Figure 9 yielded a strong (see the y -axis) and sharp avalanche, reflecting its high values of r_1 and r_2 (see Fig. 5). These three examples corroborate the effectiveness of the analytical model for predicting the properties of important dynamical phenomena such

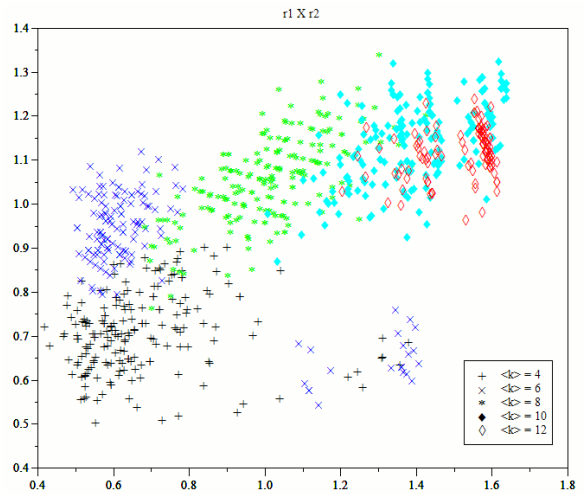


FIG. 6: The scatterplot of $r_1 \times r_2$ obtained for $N = 50$ and several average degrees considering the whole original PI networks.

as the avalanches of spikes.

We now turn our attention to the orthogonal lattice complex neuronal networks. Figure 10 shows the scatterplot of $r_1 \times r_2$ obtained for the lattice networks with sizes $N = 50, 100, 200, 500$ and 1000 . Because all the respective points fall well outside the critical region (i.e. $r_1 > 1$ and $r_2 > 1$), no avalanches are expected in orthogonal lattice complex neuronal networks. Indeed, several experimental investigations considering the several sizes completely failed to show any avalanches.

VII. CONCLUDING REMARKS

Most of natural systems can be understood as being underlain by a close relationship between their structure and respective dynamics. Because complex dynamical systems are often characterized by intricate structure and dynamics, it becomes critical to devise effective means for characterizing and modeling both these intrinsic components. The current article has reported the development of analytical models of the node-based concentric organization of orthogonal lattices and path-regular networks, which provide a comprehensive characterization of the topology of the connectivity in these two types of networks. Because of the deterministic nature of the connectivity of orthogonal lattices, exact analytical models of their respective concentric organization could be obtained. On the other hand, because of the stochastic nature of the connectivity in PI networks, a recursive mean field model was developed instead. Both models have been shown to be able to provide highly accurate predictions of the respective hierarchical number of nodes, hierarchical degrees, and intra-ring degrees. The poten-

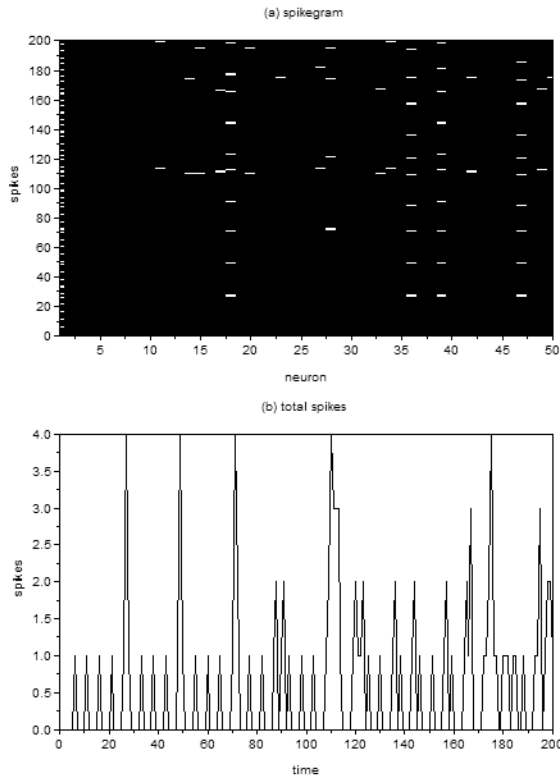


FIG. 7: The spiking dynamics, illustrated in terms of the spikegram (a) and total number of spikes along time (b) for a PI configuration with $N = 50$ and $\langle k \rangle = 4$.

tial of such analytical results has been illustrated with respect to the investigation of avalanches in integrate-and-fire complex neuronal networks underlain by orthogonal lattice and PI connectivity.

The main contributions of this work are listed in the following:

Development of analytical models of concentric organization of orthogonal lattices networks: Though rarely considered in complex networks investigations, orthogonal lattices are particularly interesting because they have deterministic connectivity and perfectly identical node degrees. In this article we developed an exact analytical model of the concentric organization of orthogonal lattices, allowing the calculation of the respective hierarchical number of nodes, hierarchical degrees and intra-ring degrees.

Development of analytical models of concentric organization of PI networks: The family of knitted networks was recently introduced [19, 20] in order to account for the possibility to defined theoretical models of connectivity founded on path, rather than star-connectivity. This family of networks include the path-transformed BA networks (PA) as well as the path-regular networks (PN). The latter model, which can be obtained by performing several path-walks encompassing

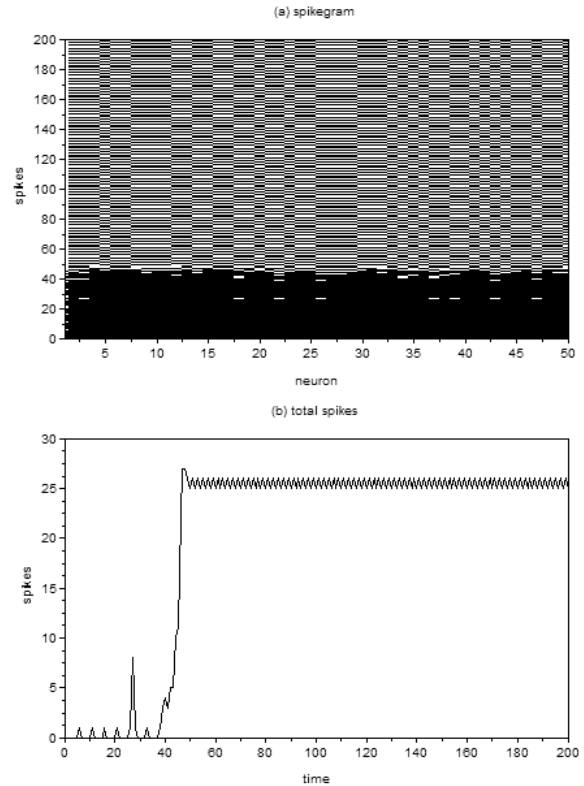


FIG. 8: The spiking dynamics, illustrated in terms of the spikegram (a) and total number of spikes along time (b) for a PI configuration with $N = 50$ and $\langle k \rangle = 8$.

all network nodes, has been modified [13] more recently in order to allow identical node degrees. The PN and PI network models are particularly relevant because of the strong regularity regarding measurements taken at distinct nodes or distinct networks. In the current article we developed a mean field analytical model of the PI network, which allows accurate estimations of the concentric organization of the original networks in terms of their hierarchical number of nodes, hierarchical degrees and intra-ring degrees.

Application for structure-function investigations: Because several important features of the dynamics unfolding in complex networks can be estimated from their respective concentric organization (e.g. [13, 14]), more specifically their respective *equivalent models*, the development of analytical models of the concentric features of the orthogonal lattice and path-regular networks has paved the way for comprehensive and systematic investigations of both the structure and dynamics of such networks.

Investigation of Avalanches: In order to illustrate the potential of the analytical models developed in this work, we applied then to characterize and predict the dynamics of avalanches in orthogonal lattice and path-

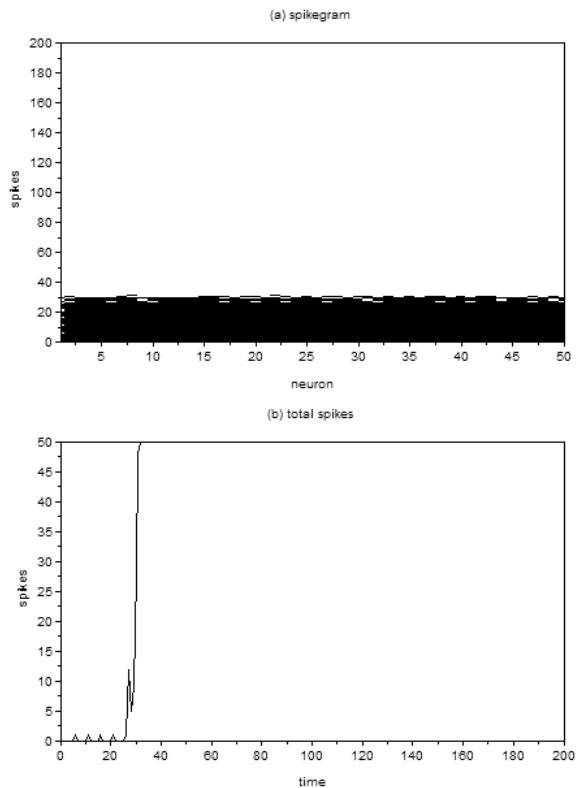


FIG. 9: The spiking dynamics, illustrated in terms of the spikegram (a) and total number of spikes along time (b) for a PI configuration with $N = 50$ and $\langle k \rangle = 12$.

regular complex neuronal networks with integrate-and-fire dynamics. More specifically, the activation ratios were obtained for several configurations (i.e. size and average degree) of these networks. A rich phase space $r1 \times r2$ was obtained for the case of the PI networks, characterized by level-sets of ratios with respect to their average degree. While PI networks with relatively small average degree were found not to produce avalanches, the configurations with higher average degrees implied sharp and strong avalanches. Such predictions have been corroborated through experimental simulations considering the whole networks. Interestingly, the orthogonal lattice networks yielded activation ratios much smaller than 1, implying that they do not produce avalanches.

Consideration of action potential integrate-and-fire dynamics: Unlike previous works (e.g. [15, 23, 24]), here we explicitly considered the integrate-and-fire dynamics to involve limitation of the action potential. More specifically, instead of dividing the stored activation amongst the outgoing axons, each axon had its activation intensity fixed to 1, representing a more biologically-realistic dynamics. The obtained results confirmed preliminary investigations that avalanches are also obtained

for fixed action potentials.

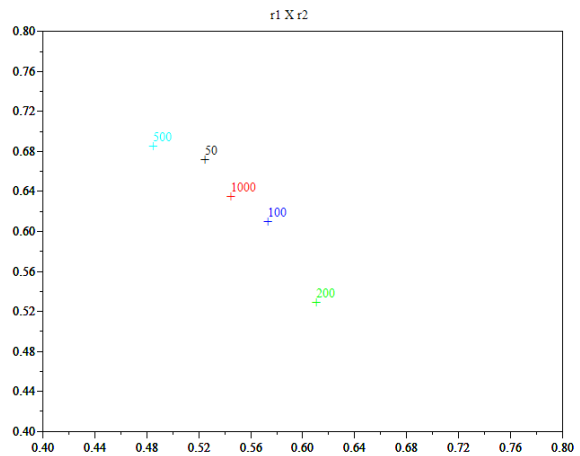


FIG. 10: The scatterplot of $r1 \times r2$ obtained for the orthogonal lattice networks. All cases fall outside the critical region defined by $r1 > 1$ and $r2 > 1$.

The importance of the developments reported in this article can also be substantiated by the following several possibilities for further investigations which have been respectively allowed:

Extension to other types of networks: It would be particularly interesting to extend the analytical models to include other types of networks such as Erdős-Rény, Barabási-Albert, and geographical (e.g. [1–5]). Such models will need to take into account the intrinsic variability of node degree implied by such networks. Yet, the orthogonal lattice and PI models can be used as a comparison reference for other models. For instance, geographical networks are expected to exhibit structural and dynamical properties similar to those of the orthogonal lattice networks.

Extension to other types of dynamics: We have shown that the analytical models, allied with the respective equivalent models, can effectively predict several qualitative and quantitative aspects of non-linear dynamics such as the integrate-and-fire activation. It remains an interesting prospect to investigate how other types of dynamics, such as linear and non-linear diffusion and synchronization, can be modeled and predicted by using the concentric models.

Acknowledgments

Luciano da F. Costa thanks CNPq (308231/03-1) and FAPESP (05/00587-5) for sponsorship.

-
- [1] R. Albert and A. L. Barabási, *Rev. Mod. Phys.* **74**, 47 (2002).
- [2] S. N. Dorogovtsev and J. F. F. Mendes, *Adv. in Phys.* **51**, 1079 (2002).
- [3] M. E. J. Newman, *SIAM Rev.* **45**, 167 (2003).
- [4] S. Boccaletti, V. Latora, Y. Moreno, M. Chavez, and D. Hwang, *Phys. Rep.* **424**, 175 (2006).
- [5] L. da F. Costa, F. A. Rodrigues, G. Travieso, and P. R. V. Boas, *Adv. in Phys.* **56**, 167 (2007).
- [6] L. da F. Costa, M. Kaiser, and C. Hilgetag (2006), arXiv/physics:0607272.
- [7] D. B. West, *Introduction to Graph Theory* (Prentice Hall, 2001).
- [8] R. Diestel, *Graph Theory* (Springer, 2000).
- [9] L. da F. Costa and R. F. S. Andrade, *New J. Phys.* **9**, 311 (2007).
- [10] L. da F. Costa and F. N. Silva, *Journal of Statistical Physics* **125**, 845 (2006).
- [11] L. da F. Costa and L. E. C. da Rocha, *The Eur. Phys. J. B* **50**, 237 (2005).
- [12] L. da F. Costa, *Phys. Rev. Lett.* **93**, 098702 (2004).
- [13] L. da F. Costa (2008), arXiv:0802.0421.
- [14] L. da F. Costa (2008), arXiv:0802.1272.
- [15] L. da F. Costa (2008), arXiv:0801.3056.
- [16] C. Koch, *Biophysics of Computation* (Oxford, 1998).
- [17] L. R. Squire, F. E. Bloom, S. K. McConnell, J. L. Roberts, N. S. Spitzer, and M. J. Zigmond, *Fundamental Neuroscience* (Academic Press, 2003).
- [18] M. Kaiser, M. Goerner, and C. C. Hilgetag, *New J. Phys.* **9**, 110 (2007), arXiv:0802.2508.
- [19] L. da F. Costa (2007), arXiv:0711.1271.
- [20] L. da F. Costa (2007), arXiv:0711.2736.
- [21] L. da F. Costa (2007), arXiv:0712.0415.
- [22] L. da F. Costa (2008), arXiv:0801.1982.
- [23] L. da F. Costa (2008), arXiv:0801.4269.
- [24] L. da F. Costa (2008), arXiv:0801.4684.