



HAL
open science

SILICON ON NOTHING MEMS ELECTROMECHANICAL RESONATOR

C. Durand, F. Casset, P. Ancey, F. Judong, A. Talbot, R. Quenouillere, D.
Renaud, S. Borel, B. Florin, L. Buchaillot

► **To cite this version:**

C. Durand, F. Casset, P. Ancey, F. Judong, A. Talbot, et al.. SILICON ON NOTHING MEMS
ELECTROMECHANICAL RESONATOR. DTIP 2007, Apr 2007, Stresa, lago Maggiore, Italy. RF
& optical. hal-00257711

HAL Id: hal-00257711

<https://hal.science/hal-00257711>

Submitted on 20 Feb 2008

HAL is a multi-disciplinary open access archive for the deposit and dissemination of scientific research documents, whether they are published or not. The documents may come from teaching and research institutions in France or abroad, or from public or private research centers.

L'archive ouverte pluridisciplinaire **HAL**, est destinée au dépôt et à la diffusion de documents scientifiques de niveau recherche, publiés ou non, émanant des établissements d'enseignement et de recherche français ou étrangers, des laboratoires publics ou privés.

SILICON ON NOTHING MEMS ELECTROMECHANICAL RESONATOR

Cédric Durand^{1,2,3}, Fabrice Casset², Pascal Ancey¹, Fabienne Judong¹, Alexandre Talbot¹, Rémi Quenouillère², Denis Renaud², Stéphan Borel², Brigitte Florin², Lionel Buchaillo³

¹ STMicroelectronics, 850 Rue Jean Monnet 38926 Crolles Cedex, France

² CEA-LETI MINATEC, 17 Rue des Martyrs 38054 Grenoble Cedex, France

³ IEMN/ISEN Dpt, Cité Scientifique, Av. H. Poincaré B.P. 60069 59652 Villeneuve d'Ascq, France

ABSTRACT

The very significant growth of the wireless communication industry has spawned tremendous interest in the development of high performances radio frequencies (RF) components. Micro Electro Mechanical Systems (MEMS) are good candidates to allow reconfigurable RF functions such as filters, oscillators or antennas.

This paper will focus on the MEMS electromechanical resonators which show interesting performances to replace SAW filters or quartz reference oscillators, allowing smaller integrated functions with lower power consumption. The resonant frequency depends on the material properties, such as Young's modulus and density, and on the movable mechanical structure dimensions (beam length defined by photolithography). Thus, it is possible to obtain multi frequencies resonators on a wafer. The resonator performance (frequency, quality factor) strongly depends on the environment, like moisture or pressure, which imply the need for a vacuum package.

This paper will present first resonator mechanisms and mechanical behaviors followed by state of the art descriptions with applications and specifications overview. Then MEMS resonator developments at STMicroelectronics including FEM analysis, technological developments and characterization are detailed.

1. INTRODUCTION

Recent demand in single chip, multi-standard wireless transceivers has focused research efforts towards developing integrated Radio Frequency (RF) Micro or Nano Electro Mechanical Systems (MEMS or NEMS) in order to replace existing off-chip oscillators like quartz or ceramics. The small sizes of the electromechanical resonators and their single wafer, multi frequencies possibilities has focussed tremendous interest in the

development of demonstrators using standard CMOS process.

Table 1 gives an overview of the state of the art on the MEMS electromechanical resonators. We can distinguish different resonator families: vibrating beam [1], longitudinal beam [2], bulk square extensional plate [3], elliptic [4] or contour [5] mode disk, rings [6], solid dielectric capacitive gap resonator [7] and bulk mode beam [8]. We can focus on the simplest case to understand how a resonator works. For a vibrating beam, we can express the mechanical resonant frequency with the following simplified equation:

$$f_{R,Beam} = A_n \sqrt{\frac{E}{\rho}} \frac{h}{L_r} \text{ Equation 1}$$

A_n is a coefficient depending on the harmonic of vibration. E is the Young modulus, ρ the density, h and L_r respectively the thickness and the length of the beam which have an "out of plan" displacement (**Figure 1**). Thus, the resonant frequency depends on the material properties and on the movable mechanical structure dimensions photolithographically defined.

The vibrating beam is polarized with a DC bias V_p . The RF signal is applied to the resonator. At the resonant frequency, the vibrating beam presents a maximum displacement detected by an output electrode as detailed in **Figure 1**. The electrode to resonator initial gap d_0 has to be as small as possible because the motional resistance R_x (illustrates the level of signal transmitted to the resonator) is strongly dependant on this factor as explained in the following equation [7]:

$$R_{x(airgap)} = \frac{k_r}{\omega_0 V_p^2} \frac{d_0^4}{\epsilon_0^2 \epsilon_r^2 S^2} \frac{1}{Q_{(airgap)}} \text{ Equation 2}$$

k_r is the stiffness, ω_0 the pulsation, ϵ_0 the air dielectric constant, ϵ_r the material dielectric constant, S the electrode surface, and Q the quality factor. For an integrated resonator we aim to obtain a motional resistance between 50 ohms and 10kohms.

Parameter	Oscillators	VCO	Band pass Filters
Central frequency	N times 38.4MHz ($F_{0, \text{MHz}}$) Example : N = 2 : F = 76.8MHz	2GHz	WIMAX : 2.3 to 2.7 or 3.3 to 3.7GHz WiFi : 2.4 to 2.5 or 4.9 to 5.9GHz DVBH : 450 to 850 MHz GSM EGSB band: 850-915 (Tx) and 925-960MHz (Rx) GSM DSC band: 1710-1785 (Tx) and 1805-1880 MHz (Rx)
Q factor	100 000 / N Example : N = 2 : $Q_{\text{res}}=50000$	1000	—
Band pass	—	—	WIMAX : 1.5 to 10MHz WiFi : 20MHz DVBH : 5, 6, 7 or 8MHz GSM EGSB: 330MHz GSM DSC: 75MHz
Phase noise	-117dBc/Hz@400kHz -160dBc/Hz@20MHz	-140,7 dBc/Hz @600kHz	Insertion -1,5dB (-2,5 GSM) Rejection -35dB (-30 GSM)
Operational temperature range	-40 to +100°C	-40 to +100°C	-40 to +100°C
Frequency stability over temperature	+/- 0,1ppm/°C (Quartz with comp.)	—	—
Frequency stability over aging	10ppm (Quartz) over 10 years	—	—
DC Voltage	1,2 to 5V	2,4V	—
Impedance	50Ω - 10kohm	—	50Ω
Tuning range	If possible	>200-300MHz	If possible

Table 2 : Resonator applications and specifications

We can make a few observations about the specifications needed for the different applications describe in Error! Reference source not found.. VCO will require frequencies as high as 2GHz with a large frequency tuning. Looking at the electromechanical resonator state of the art, we can see that the highest obtained resonant frequency is around 1.5GHz. Moreover the electromechanical resonator frequency tuning is inversely proportional to the stiffness and also the frequency. Therefore it is difficult to reach the VCO specifications. The filter applications require, in general, a large band pass whereas electromechanical resonators are characterised by a high quality factor which induces a narrow band pass. A mechanical coupling could be used to enlarge the resonator band pass [1]. But in this way, it could be difficult to reach the drastic specifications needed. So, electromechanical resonators seem to be not adapted to satisfying filtering specifications. The third main application using resonator consists in providing a stable and precise reference frequency. Today, these reference oscillators are constituted by quartz oscillators which have large size and have to be built off-chip (then reported). MEMS or NEMS electromechanical resonators are good candidates to replace quartz oscillators. Its present high frequencies compared to quartz (limited around 60MHz) and use CMOS process from an integration solution perspective.

4. RESONATOR DESIGN AND DETECTION

4.1. Analytical design & Detection

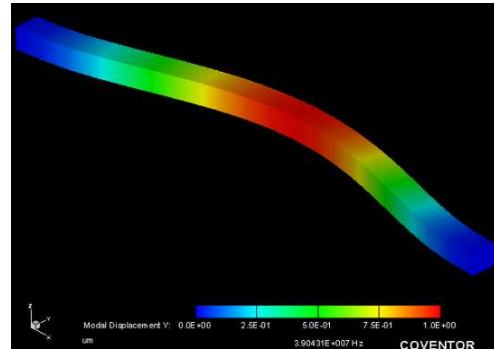


Figure 3 : FEM modal simulation of a clamped-clamped beam

Dimensions: Length:10μm, Width: 0.46μm, Height: 0.4μm
 Coventor: 39.0MHz
 Analytic: 38.8MHz
 Delta: 0.5 %

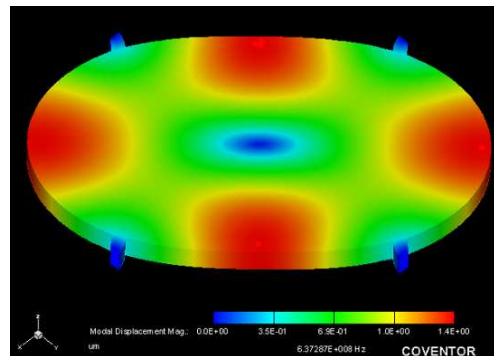


Figure 4 : FEM modal simulation of a bulk elliptic mode disk

Dimensions: Diameter:6μm, Height: 0.4μm
 Coventor: 637MHz
 Analytic: 644MHz
 Delta: 1 %

We notice a good agreement between analytic and FEM results. Displacements are amplified and not representative.

It is well know that this displacement is in the nanometre range (nearly 10-20 nm for the beam, 1-5 nm for the disk). Due to very low displacements, capacitance variation is too low for output detection using capacitive detection technique. In this way, we investigate MOS detection.

4.2. Capacitive versus MOS Detection

MOS detection is well adapted for the output signal acquisition [9]:

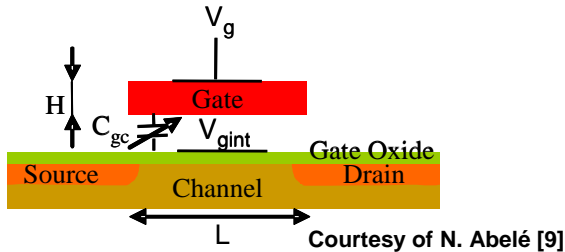


Figure 5: Schematic of a suspended resonator using MOS detection

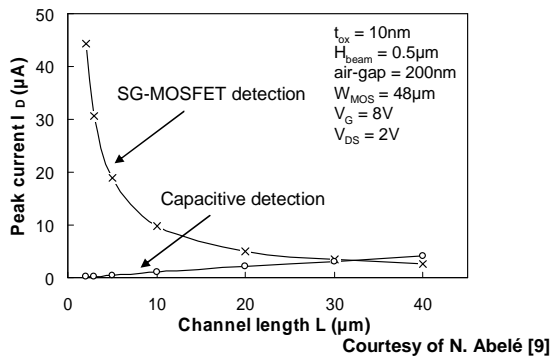


Figure 6: Comparison of MOS & Capacitive detection for a flexural mode clamped-clamped beam

Figure 5 gives a schematic with the principle of MOS detection. The gate is the resonant structure. Figure 6 shows that when dimensions of resonators decrease (frequencies increase and consequently displacements decrease), the MOS detection is more efficient compared to the capacitive one. This is why MOS detection has been integrated for our technological developments.

5. SON TECHNOLOGICAL DEVELOPMENTS

Decrease sizes and gap is still a challenge for useful component. In this way, a front end resonator using the Silicon on Nothing (SON) process based on Silicon Germanium (SiGe) and Silicon (Si) epitaxy (Figure 7a) and equally used for MOS realization [10], is under development. The goal is to obtain sub 100nm gap allowing the realization of NEMS with a reduced motional resistance.

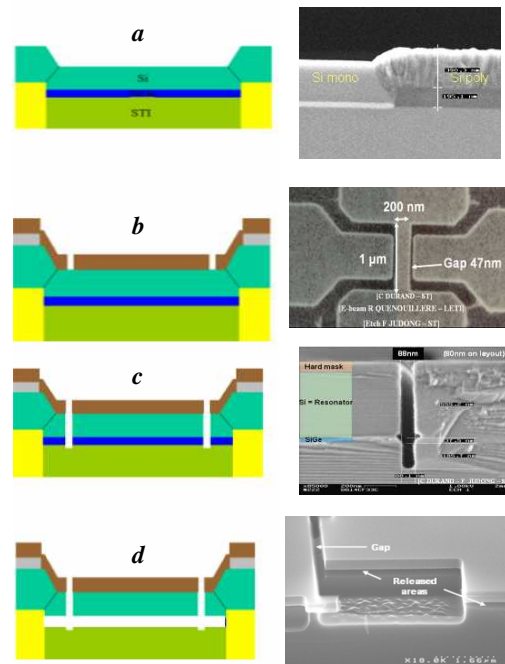


Figure 7: STMicronelectronics SON process

Resonator gaps are made by the use of e-beam lithography (Figure 7b) and deep trench etching (Figure 7c) in order to obtain sub 100nm gaps. Finally, we etch the SiGe sacrificial layer to release the mechanical structure (Figure 7d). The following Scanning Electron Microscope (SEM) pictures are showing the developed technological steps.

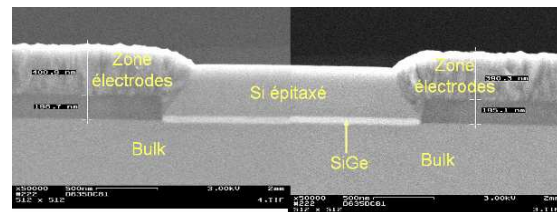


Figure 8: SEM pictures of Si & SiGe epitaxy

Figure 8 shows the two epitaxy steps. The first one concerns the epitaxy of the SiGe sacrificial layer. The second concerns non selective Si epitaxy that grows with theoretically unstressed monocrystalline Si above SiGe and polycrystalline Si above Silicon Oxide (SiO₂) layers. The resonator will be defined in monocrystalline areas by deep trench etching.

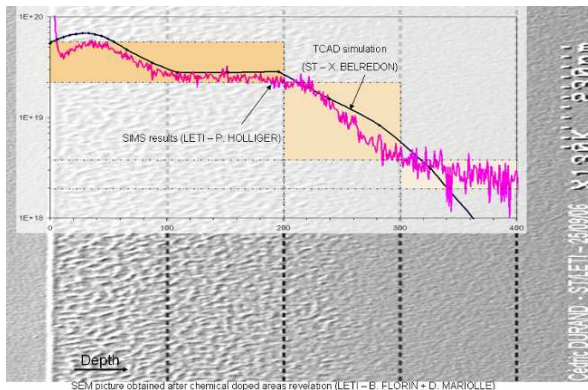


Figure 9 : Depth doping level characterization after phosphorous doping

To make the MOS for detection, the monocrystalline Si layer is Boron doped in situ at a level doping corresponding to the MOS channel doping, around 5.10^{15} at/cm³. A phosphorous doping is necessary to make Source, Drain, and Gate (= resonator). Figure 9 shows the depth doping level characterization with a comparison of simulation, SIMS method and a chemical doping level revelation [11], with a good agreement. The doping level is not continuous with depth because of technological constraints. The minimum doping level of around 3.10^{18} at/cm³ seems to be enough for the application. The physical revelation enables the study of lateral doping diffusion (Figure 10).

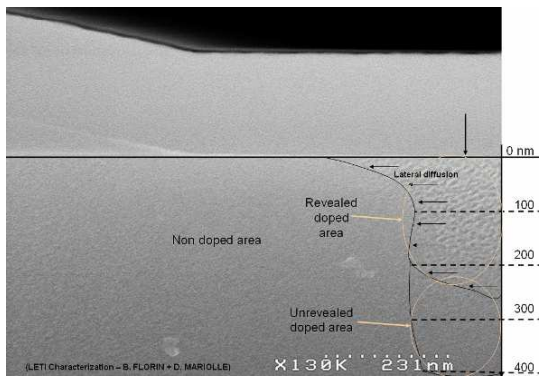


Figure 10 : Lateral doping diffusion after thermal annealing

In order to limit the high motional resistance of devices, it is desirable to make small gaps between resonators and electrodes. It is why the gap has been defined by e-beam photolithography and etched (Figure 7b & c) using a highly anisotropic plasma process. Some

pictures of the technological results are presented in Figure 11 and Figure 12.

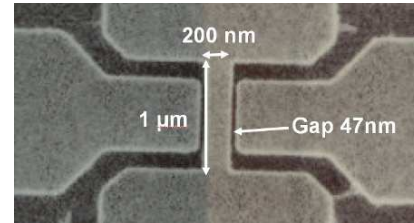


Figure 11 : Top SEM view of a nano beam

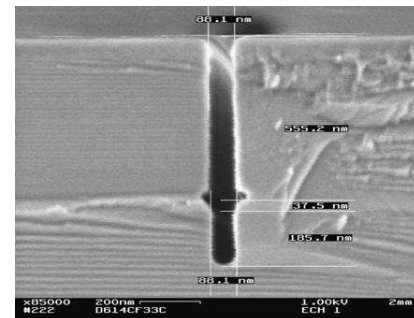


Figure 12 : Gap etch cross SEM picture

Figure 11 gives an idea of the precision of technological gap definition after etching. Figure 12 gives a cross section view of a 90nm gap obtained after a 400nm Si etching with an enlargement of less than 10nm due to the etching process.

After the gap etching, the SiGe (sacrificial layer) has to be etched (Figure 7d) with a high selectivity SiGe/Si and SiO₂/SiGe. The aim is to release resonators that will be suspended.

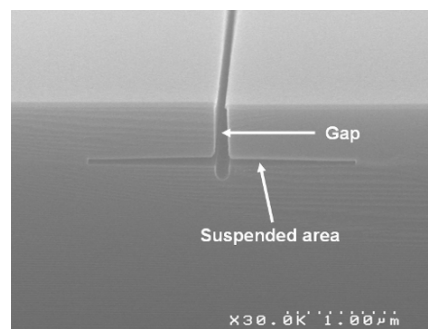


Figure 13 : Tilt SEM view of SiGe released areas

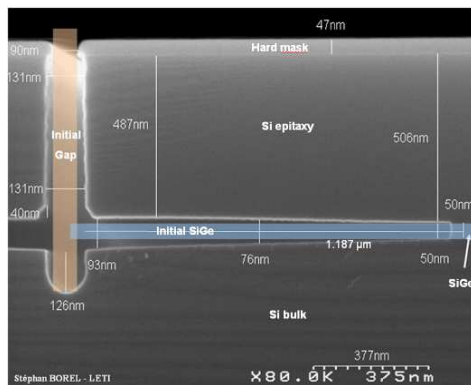


Figure 14 : Cross section view of a released tunnel

The process has been developed initially mainly for CMOS using SON technology purposes with tunnel to etch around 500nm [12]. Here the process has been adapted to be able to etch longer tunnels as shown in **Figure 13** and **Figure 14**. The process selectivity is strongly dependant of the tunnel depth. For a 1.19μm tunnel depth, the initial gap measured at 90nm has been enlarged and measured at 130nm after release. The process is under progress so as to improve selectivity.

Work is in progress in collaboration with the CEA-LETI & IEMN to obtain electrical demonstrators in the close future.

6. CONCLUSION

MEMS or NEMS electromechanical resonator is a very important component in order to integrate frequency reference oscillator in chips. Some developments to obtain capacitive and MOS demonstrators were presented. The electromechanical resonator state of the art highlights the importance of sub 100nm gaps and packaging. The SON process seems to be well adapted to obtain promising components. Process developments have started from electrical demonstrators' realization. Future work on packaging and IC integration will be investigated in a close future.

7. REFERENCES

- [1] Nguyen and al, "High-Q HF Microelectromechanical Filters", *IEEE Journal of Solid State Circuits*, Vol. 35, n°4, 2000.
- [2] Koskenuori, Mattila and al, "Active post processing method to increase the electro mechanical coupling in microresonators", *Helsinki University & VTT*, 2002
- [3] Kaajakai, Mattila and al, "Square-Extensional Mode Single Crystal Silicon Micromechanical RF resonator", *Transducers*, 2003.
- [4] Pourkamali and Ayazi, "High Frequency Capacitive Micromechanical Resonators with Reduced Motional Resistance using the HARPSS Technology", *IEEE Topical Meeting on Silicon Monolithic Integrated in RF Systems*, 2004.
- [5] Nguyen and al, "1.51GHz nanocrystalline diamond micromechanical disk resonator with material mismatched isolating support", *MEMS Conference*, 2004.
- [6] Nguyen and al, "Micromechanical "Hollow-disk" ring resonators", *IEEE*, 2004.
- [7] Lin, Li, Ren and Nguyen, "Vibrating micromechanical resonator with solid dielectric capacitive transducer gaps", *IEEE Int. Frequency control/precision time & time interval symposium*, 2005.
- [8] F. Ayazi and al, "High aspect ratio SOI Vibrating Micromechanical resonators and filters", *IMS*, 2006
- [9] N. Abelé, V. Pott, K. Boucart, F. Casset, K. Séguéni, P. Ancy A.M. Ionescu, "Comparison of RSG-MOSFET and capacitive MEMS resonator detection", *IEE Electronics Letters*, 03/2005, Vol. 41, No. 5, pp. 242-244.
- [10] S. Monfray and al, *IEDM*, 2001.
- [11] X-D. Wang et al, "2D ultrashallow junction characterization of MOSFET with strained silicon", *Proceedings of the Seventh International Workshop on the Fabrication, Characterization, and Modeling of ultrashallow Doping profiles in Semiconductors*, JVST B22(1) - pp. 373-376 (2004).
- [12] S. Borel, V. Caubet and al, "Isotropic Etching of Si1-xGex Buried Layers Selectively to Si for the Realization of Advanced Devices", *ECS*, 2006.