

Figure S1

A

```
RTA      1                               MQNE      4
XRbm9    1 MADAVMSDAHLLGFNTRGTRKRESDQQLHLGSSGASGAGVQRORVEPEQQE  50
hRbm9    1                               NE       2
           :*

RTA      5 P-----LTPGYHGFPARDSQGNQEPPTTPDAMVQPFPTTIPFPPPPQNG  47
XRbm9    51 PGNPMSMPVSOAYQGFAPLNSQGNQEPATPD TMVQPFFAAIPFPPPPQNG  100
hRbm9    3 P-----LTPGYHGFPARDSQGNQEPPTTPDAMVQPFPTTIPFPPPPQNG  45
           *      ::  *:*  *****:*:*:*****:*****

RTA      48 IPTEYGVPHQTQDYAGQTGEHNLTLYGSTQAHGEQSSNSPSTQNGSLTTEG  97
XRbm9    101 LSTDYGSQHTQDYATQSTEHGIPLYGGGQSLAEHSAPATSTANASSTTDG  150
hRbm9    46 IPTEYGVPHQTQDYAGQTGEHNLTLYGSTQAHGEQSSNSPSTQNGSLTTEG  95
           : *:*  ***** : *:*  ***  * : * : : * * * * * *

                                     RNP2
RTA      98 GAQTDGQQSQTSSENSESKSTPKRLHVSNI PFRFRDPDLRQMFQGFQFKI  147
XRbm9    151 -SQTEGQQSQSQNNENSETKASPKRLHVSNI PFRFRDPDLRQMFQGFQFKI  199
hRbm9    96 GAQTDGQQSQTSSENSESKSTPKRLHVSNI PFRFRDPDLRQMFQGFQFKI  145
           : *:*  ***** : * * * * : * : * : * : * : * : * : * : * : * : *

                                     RNP1
RTA      148 LDVEIIFNERGSKGFGFVTFENSADADRAREKLGHTVVEGRKIEVNNATA  197
XRbm9    200 LDVEIIFNERGSKGFGFVTFETSADADRAREKLHSTVVEGRKIEVNNATA  249
hRbm9    146 LDVEIIFNERGSKGFGFVTFENSADADRAREKLGHTVVEGRKIEVNNATA  195
           *****:*****

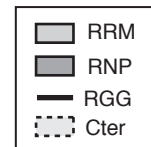
RTA      198 R VMTNKKMVTPYANGWKLSPVVGAVYGPELYAASSFQADVSLGNDAAVPL  247
XRbm9    250 R VMTNKKSVTPYNGWKLSPVVGAVYGPELYA-----  281
hRbm9    196 R VMTNKKMVTPYANGWKLSPVVGAVYGPELYAASSFQADVSLGNDAAVPL  245
           *****

RTA      248 SGRGGINTYIPLISLPLVPGFPYPT--AAT'AAAFRGAHLRGRGRTVYG  294
XRbm9    282 -----VPGFPYPTAAAAAT'AAAFRGAHLRGRGRTVYG  314
hRbm9    246 SGRGGINTYIPLI----IPGFPYPT--AAT'AAAFRGAHLRGRGRTVYG  288
           :*****

RTA      295 AVRAVPPTAIPAYPGVVYQDGFYGDLYGG[-----YAA'RYAQPAT-----]  335
XRbm9    315 AVRAVPPTAIPAYPGVLYQDGFYGTLYGG[-----YAA'RYAQPATA-----]  356
hRbm9    289 AVRAVPPTAIPAYPGVVYQDGFYGDLYIE[ANCFRSNRVDMQPTDMHSL]  338
           *****:*****:*****:*** : **

RTA      336 [---ATAATAAAAAAAAAAYSDGYGRVYTADPYHALAPAASYGVGAVASLYRGG]  383
XRbm9    357 [---ATAATAAAAAAAAAAYSDGYGRVYTADPYHTLAPATSYGVGAVASLYRGG]  404
hRbm9    339 [LLQPQPELLQPLQPLTVTVMAGCTOPTPTMPLPLPLAMELALWVRVYTEVA]  388
           * * :

RTA      384 [YSRFAPY] 389
XRbm9    405 [YSRFAPY] 411
hRbm9    389 [TADLPPTEVT] 398
           : *
```



B

```
exon sup XRbm9    AAPGLQADVSLATEAGVPLPGPRGVNTYIPLI
hRbm9    228 ASS-FQADVSLGNDAAVPLSGRGGINTYIPLI 258
           * : ***** : : * * * * * * : *****
```

Figure S2

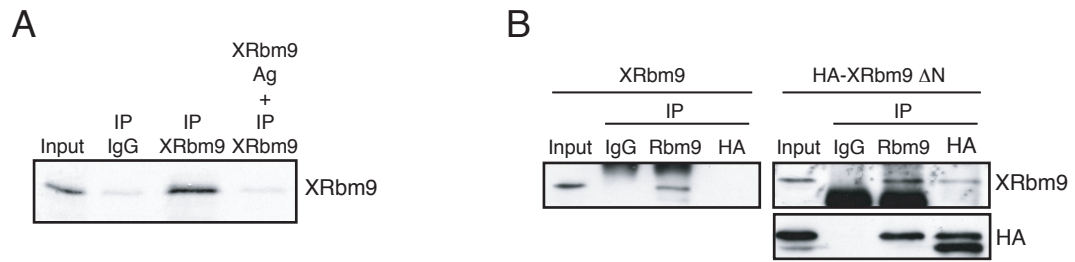


Figure S3

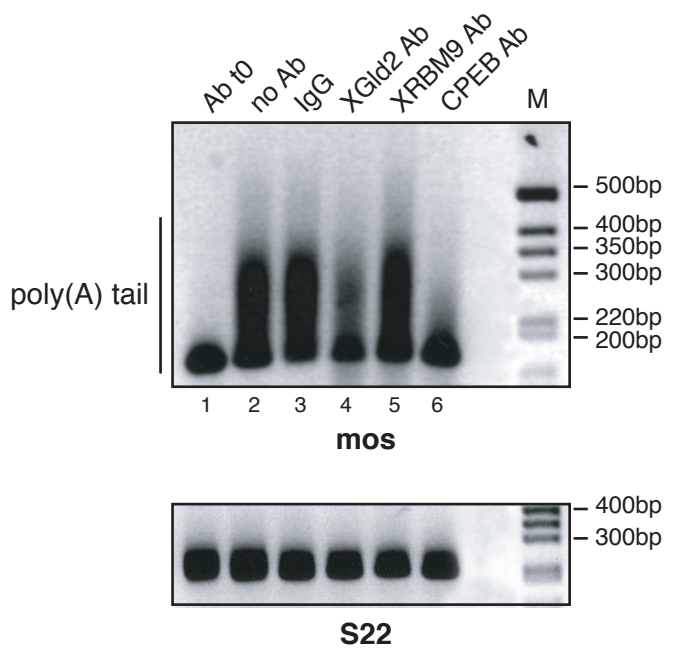


Figure S4

