



Advanced Altimeter Data Assimilation for the Development of Operational Oceanography

Florence Birol, Eric Blayo, Jean-Michel Brankart, Pierre Brasseur, F. Debost,
Thierry Delcroix, Pierre de Mey-Frémaux, Fabien Durand, Sophie Durbiano,
Geir Evensen, et al.

► To cite this version:

Florence Birol, Eric Blayo, Jean-Michel Brankart, Pierre Brasseur, F. Debost, et al.. Advanced Altimeter Data Assimilation for the Development of Operational Oceanography. Jason-1 SWT meeting, Jun 2002, Biarritz, France. hal-00230222

HAL Id: hal-00230222

<https://hal.science/hal-00230222>

Submitted on 8 Sep 2022

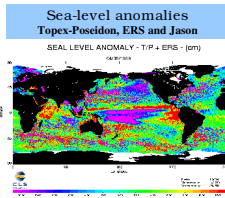
HAL is a multi-disciplinary open access archive for the deposit and dissemination of scientific research documents, whether they are published or not. The documents may come from teaching and research institutions in France or abroad, or from public or private research centers.

L'archive ouverte pluridisciplinaire **HAL**, est destinée au dépôt et à la diffusion de documents scientifiques de niveau recherche, publiés ou non, émanant des établissements d'enseignement et de recherche français ou étrangers, des laboratoires publics ou privés.

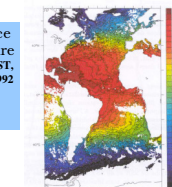


Distributed under a Creative Commons Attribution - NonCommercial 4.0 International License

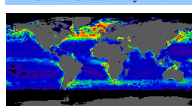
Ocean observation system



Sea-surface temperature
1/4° gridded SST,
October 21st 1992



Ocean colour
SeaWiFS data - May 1998

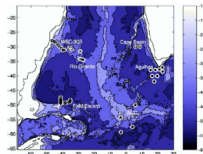


Satellite observations provide a unique opportunity to monitor the ocean evolution in real time, accurately, at the global scale, and with high resolution.

As the properties of the sea-surface only can be observed from space, data assimilation systems are useful to improve the consistency between data sets and model simulations, to dynamically extrapolate and interpolate data scattered in space/time, to better exploit the results of observation programs, and to make comprehensive interpretation of multivariate observations.

- The data considered in the various assimilation activities of the MEOM team are mainly:
 - altimetric data from the Topex-Poseidon and ERS missions (fig. 1.1);
 - sea-surface temperature products from the NASA NOAA Pathfinder project (fig. 1.2);
 - ocean colour data from the SeaWiFS project (fig. 1.3).

From WOCE to CLIVAR: the South Atlantic



As a joint research effort between the LEGI (Grenoble) and LPO (Brest) laboratories, data assimilation experiments have been performed in the South Atlantic to reconstruct the ocean variability during the WOCE period.

The model configuration is extracted from the 1/3° Atlantic model developed by the Clipper project (OPA model), limited at 20°N with an open-sea boundary (figure 3.1).

Hindcast experiments have been performed using a simplified SEEK filter, assimilating SST and SSH data between January 1993 and January 1997 in a similar way as in the North Atlantic experiments (see next frame).

The behaviour of the error statistics on SST and SSH is illustrated by figure 3.2, showing a stable reduction of the RMS model-data misfit of about 1°C for temperature, and 12 cm for sea-level.

Figure 3.3 illustrates the impact of the assimilation on the eddy kinetic energy. A better positioning of the turbulent structures is obtained. Figures 3.4 illustrates the impact of the assimilation on the RMS difference with respect to independent XBT profiles.

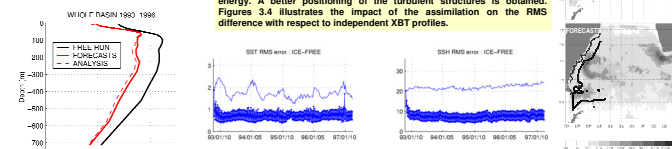


Figure 3.3

The Tropical Pacific Ocean

The assimilation of satellite altimetry data (TIP-ERS) has been performed, using the SEEK filter in a primitive equation model (OPA) of the whole Tropical Pacific ocean between 30°S and 30°N to reconstruct the ocean variability during the 1994-1998 period. The reduced basis of the SEEK filter is evaluated from a three-dimensional multivariate EOF analysis of a reference model simulation (fig. 6.1), which is forced at the surface with ERS/TAO wind stress fields and heat fluxes from the NCEP reanalysis.

The SESAM software allows an easy interface between the SEEK algorithm and the OPA ocean model.

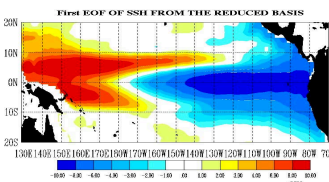


Figure 6.1

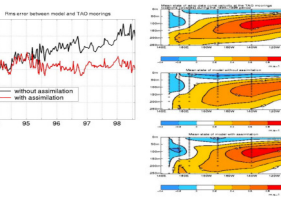
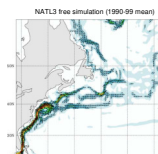


Figure 6.3

A variety of diagnostics with independent data have been computed to validate the assimilation scheme. On figure 6.2, the reduction of the RMS error between the model and thermal profiles from the TAO array becomes significant after 2 years of assimilation. The zonal velocity field in the assimilation is also better than in the free model run. It allows to produce a more realistic circulation with a more intense Equatorial Under Current along the thermocline and less intense South Equatorial Current at the surface (fig. 6.3).

The MERCATOR project: the North Atlantic



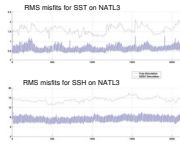
MERCATOR is a French initiative which aims at the implementation of an operational capacity of global ocean monitoring and prediction within the time frame of the GODAE experiment (2003-2005).

As a contribution to the research activities conducted around the MERCATOR Project, a prototype assimilation system has been developed at LEGI based on the SEEK filter, the SESAM software, and a 1/3° resolution OPA model of the North Atlantic between 20°S and 20°N (Testut et al., 2002).

A series of hindcast experiments have been performed, assimilating SST and SSH data between October 1992 and November 1999 using ECMWF atmospheric forcings.

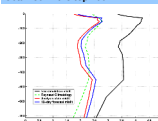
Figure 4.1 illustrates the impact of the assimilation on the mean currents during the nineties at 50 m depth. The Gulf Stream separation at Cape Hatteras, its northward extension and the associated meso-scale activity are significantly improved in the run with assimilation (bottom) compared to the free model simulation (top).

The behaviour of the error statistics on SST and SSH is illustrated (fig. 4.2), showing a stable reduction of the model-data misfit of ~0.8°C for temperature, and ~8 cm for sea-level. In addition, the adaptive mechanism of SEEK is useful to improve the consistency between the error standard deviation predicted by the filter and the actual observation errors.



Validation of the system:

The hindcast experiment has been validated using a set of independent XBT data during 1994. A positive impact of the assimilation on temperature is obtained in the top 700m.



Optimisation of observation systems

The general objective of this study is to assess a variety of multi-satellite altimetric scenarios from the perspective of the future space missions (Jason-2, AltiKa, etc.) that will be launched to monitor the mesoscale ocean circulation. The approach taken for this work is based on the use of numerical models and assimilation methods using twin experiments. The numerical model is used to generate synthetic data sets following the multi-satellite sampling schemes that are aimed to be explored. The OPA primitive-equation model is used for this purpose in an academic configuration. The model is eddy-resolving (20 Km) and 11 layers on the vertical.

The Singular Evolutive Extended Kalman (SEEK) filter is implemented (using the SESAM system) to assimilate the altimetric data, using an EOF basis to reduce the error sub-space. The sea-surface height data are sampled from the model output, along the ground track following the missions parameter of Topex-Poseidon (TIP) and Jason-1 (Ja) and one scenario which is under consideration for the future AltiKa (AltiK) satellite mission (with 35 days orbital period). Different satellite sampling strategies are explored.

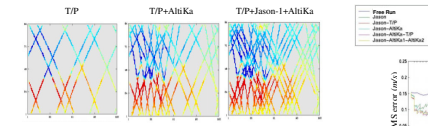


Figure 2.1: Tracks for one, two and three satellite configurations. Examples of track patterns for 5 days of observation

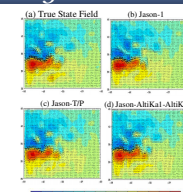


Figure 2.2: UV SSH fields for a) true state, b) Jason-1, c) Jason-TIP and d) Jason-TIP+AltiKa

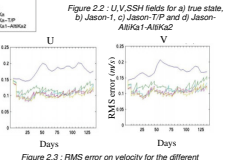


Figure 2.3: RMS error on velocity for the different observation scenarios.

The DIADEM and TOPAZ projects

DIADEM : Development of operational data assimilation systems for the North Atlantic and the Nordic Seas

TOPAZ : Towards an Operational Prediction system for the North Atlantic and European coastal Zones

The main objective of these european projects is to develop advanced data assimilation systems for coupled primitive equation ocean circulation and marine ecosystem models of the North Atlantic and the Nordic Seas.

The SEEK filter has been interfaced with the isopycnic MICOM model to assimilate Nasa Pathfinder SST, Topex-Poseidon/ERS altimetric and SeaWiFS ocean color data sequentially, every 3 or 10 days. In TOPAZ, deep temperature and salinity data are also assimilated in the model.

In figure 5.1, a zoom on the Gulf Stream region from the 10-day forecast of April 10, 1993, is compared to the observations: SSH (in m) is on the left, and SST (in °C) is on the right. Figure 5.2 illustrates the phytoplankton concentration (in mg/m³) on April 5th, 1998. The SeaWiFS observation is on the left and the DIADEM system analysis is on the right.



Figure 5.2

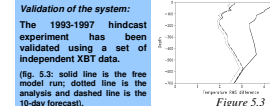


Figure 5.3

Real-time demonstration of the DIADEM system:
<http://www.mcom.hmg.inpg.fr/WebProjects/DIADEM>

Conclusions

Advanced data assimilation methods have been developed to assimilate a variety of ocean circulation and ecosystem data in various ocean models. These studies are carried out in the perspective of operational oceanography, with a special focus on satellite observations of altimetry, sea-surface temperature and ocean colour.

In particular, a reduced-rank Kalman filter (SEEK) has been implemented in a variety of ocean models. The assimilation method has been first validated in a series of twin experiments conducted in idealized situations, and then implemented into real ocean simulation and prediction systems.

Observation system simulations have been conducted in twin assimilation experiments in order to assess the ability of different multi-satellite scenarios to observe the ocean mesoscale activity. This study is carried out to help in the planification of future spatial mission to observe ocean altimetry.

New methodological developments, such as local error covariance, local gain, and adaptive mechanisms have been undertaken to address specific issues raised by real assimilation problems. The capacity of the assimilation scheme to predict realistic and statistically consistent error bars on the field estimates has been examined and improved by "recycling" the residual innovation information.

A special effort is currently dedicated to the validation of the assimilation system with independent *in situ* measurements: so far, the residual misfits with TAO array data in the Tropical Pacific, and XBT profiles in the Atlantic Ocean, objectively demonstrate the benefit gained from the assimilation.

In addition to the hindcast experiments realized in a scientific perspective, a real-time demonstration of the DIADEM/TOPAZ system is currently underway in a technical perspective to deliver ocean circulation predictions on the North Atlantic within the european DIADEM/TOPAZ projects.

References

- Ballabrera-Poy J., P. Brasseur and J. Verron, 2000: Dynamical evolution of the error statistics with the SEEK filter to assimilate altimetric data in an eddy-resolving ocean model. *Q. J. R. Met. Soc.*, 127, 233-253.
- Brankart J.M., C.E. Testut, P. Brasseur, and J. Verron, 2001: Implementation of a multivariate data assimilation scheme for isopycnic coordinate ocean models: application to a 1993-96 hindcast of the North Atlantic Ocean circulation. *J. Geophys. Res.* in press.
- Brasseur P., J. Ballabrera-Poy, and J. Verron, 1999: Assimilation of altimetric observations in a primitive equation model of the Gulf Stream using a Singular Evolutive Extended Kalman filter. *J. Mar. Systems*, 22(4), 269-294.
- Brudal K., J.M. Brankart, G. Halberstadt, G. Evensen, P. Brasseur, P.J. van Leeuwen, E. Dombrowsky, and J. Verron, 2001: An evaluation of ensemble based assimilation methods with a layered OGCM. Submitted to *J. Mar. Systems*.
- Carmillet V., J.M. Brankart, P. Brasseur, H. Drange, G. Evensen and J. Verron, 2000: A Singular Evolutive Extended Kalman filter to assimilate ocean colour data in a coupled physical-biochemical model of the North Atlantic Ocean. *Ocean Modelling*, 3, 167-192.
- Parent L., 2000: Assimilation de données dans l'océan Pacifique Tropical sur la période 1994-1998. Ph.D. thesis, Université J. Fourier - Grenoble 1, 226 pp.
- Parent L., C.E. Testut, J.M. Brankart, J. Verron, and P. Brasseur, 2001: Assimilation of Topex/Poseidon and ERS altimetric data in the Tropical Pacific Ocean: the use of TAO data to reference mean sea surface height. Submitted to *J. Mar. Systems*.
- Penduff Th., B. Barrier, P. Brasseur, and J. Verron, 2001: Impact of altimetric and sea-surface temperature data assimilation in a high-resolution South Atlantic Ocean model with a reduced-order Kalman filter. Submitted to *J. Mar. Res.*
- Pham D.T., J. Verron and M.C. Roubaud, 1998: Singular evolutive extended Kalman Filter with EOF initialization for data assimilation in oceanography. *J. Mar. Syst.*, 16 (3-4), 323-340.
- Testut C.E., P. Brasseur, J.M. Brankart and J. Verron, 2002: Assimilation of sea surface temperature and altimetric observations during 1992-1993 into an eddy-permitting primitive equation model of the North Atlantic Ocean, submitted to *J. Mar. Syst.*
- Verron J., L. Gourdeau, D.T. Pham, R. Murtugudde, and A. Busalacchi, 1999: An extended Kalman filter to assimilate satellite altimetry data into a non-linear numerical model of the tropical Pacific: method and validation. *J. Geophys. Res.*, 104 (C3), 5441-5458.