



Identification of liver protein targets modified by tienilic acid metabolites using a two-dimensional Western blot-mass spectrometry approach

Ruth Menque Methogo, Patrick M. Dansette, Klaus Klarskov

► To cite this version:

Ruth Menque Methogo, Patrick M. Dansette, Klaus Klarskov. Identification of liver protein targets modified by tienilic acid metabolites using a two-dimensional Western blot-mass spectrometry approach. International Journal of Mass Spectrometry, 2007, 268 (2-3), pp.284-295. 10.1016/j.ijms.2007.06.002 . hal-00192244

HAL Id: hal-00192244

<https://hal.science/hal-00192244>

Submitted on 27 Nov 2007

HAL is a multi-disciplinary open access archive for the deposit and dissemination of scientific research documents, whether they are published or not. The documents may come from teaching and research institutions in France or abroad, or from public or private research centers.

L'archive ouverte pluridisciplinaire **HAL**, est destinée au dépôt et à la diffusion de documents scientifiques de niveau recherche, publiés ou non, émanant des établissements d'enseignement et de recherche français ou étrangers, des laboratoires publics ou privés.

**Identification of liver protein targets modified covalently by tienilic acid metabolites
using a two dimensional Western blot-mass spectrometry approach**

Ruth Menque Methogo^a, Patrick M. Dansette^b and Klaus Klarskov^{a*}

- a. Department of Pharmacology, Faculty of Medicine, 3001 12e Avenue Nord,
Université de Sherbrooke, Sherbrooke J1H 5N4, Quebec, Canada.
klaus.klarskov@usherbrooke.ca
- b. Université Paris-Descartes, CNRS UMR 8601, Paris, France.
Patrick.Dansette@univ-paris5.fr

*Corresponding author. Department of Pharmacology, Faculty of Medicine, 3001 12e Avenue Nord, Université de Sherbrooke, Sherbrooke J1H 5N4, Quebec, Canada. Tel. 1-819-820-6868 ext. 1-5490 Fax 1-819-564 5400. Email: klaus.klarskov@usherbrooke.ca

Abstract

A combined approach based on two dimensional electrophoresis-immuno blotting and nanoliquid chromatography coupled on-line with electrospray ionization mass spectrometry (nLC-MS/MS) was used to identify proteins modified by a reactive intermediate of tienilic acid (TA). Liver homogenates from rats exposed to TA were fractionated using ultra centrifugation; four fractions were obtained and subjected to 2D electrophoresis. After transfer to PVDF membranes, modified proteins were visualized after India ink staining, using an anti-serum raised against TA and ECL detection. Immuno-reactive spots were localized on the PVDF membrane by superposition of the ECL image, protein spots of interest were excised, digested on the membrane with trypsin followed by nLC-MS/MS analysis and protein identification. A total of fifteen proteins were identified as likely targets modified by a TA reactive metabolite. These include selenium binding protein 2, senescence marker protein SMP-30, adenosine kinase, Acyl protein, adenosylhomocysteinase, capping protein (actin filament), protein disulfide isomerase, fumarylacetoacetase, arginase chain A, ketohexokinase, proteasome endopeptidase complex, triosephosphate isomerase, superoxide dismutase, dna-type molecular chaperone hsc73 and malate dehydrogenase.

Keywords. 2D immuno blotting, tienilic acid, nanoliquid chromatography-electrospray ionization mass spectrometry, on-membrane digestion, protein modification.

1.0 Introduction

Drug induced autoimmune hepatitis, characterized by hepatitic, cholestatic, or miscellaneous clinical features belongs to some of the most severe adverse drug reactions. Common to these reactions are the involvement of an improper immune response that is directed toward the host's liver. Studies in the past indicate that the uricosuric diuretic agent, tienilic acid (also named, Ticrynafen, Selacryn, Diflurex; 2,3-dichloro-4-(2-thienylcarbonyl) phenoxyacetic acid) (TA) causes drug induced-autoimmune hepatitis in certain persons. As a consequence, TA was withdrawn from clinical use in the United States in the early eighties [1] and in France in 1992. Although several mechanisms may be involved, the current understanding of drug induced-autoimmune diseases is based on two interdependent complementary working hypotheses e.g. the "Hapten" and the "Danger" hypothesis [2-4]. Of importance for both hypotheses is the requirement for metabolic transformation of the drug to a reactive metabolite(s), resulting in two different but essential outcomes. The first involves covalent modification of cellular macromolecules by reactive metabolites that after intra cellular processing lead to modified peptides being presented as antigens to the immune system, probably via the MHC processing system. In addition, it seems likely that in order to trigger the immune response some kind of cellular stress should be present. This assumption is based on the fact that immune mediated adverse drug reactions are dramatically increased in persons concomitantly infected with a virus or suffering from other ailments [5]. Metabolic activation of a drug causing either direct or indirect up-regulation of cellular stress proteins could be involved. Alternatively, modification of essential or specific stress proteins could be an important factor resulting in cellular stress. Initial phases of

TA toxicity are believed to be due to metabolic activation by CYP450 2C9 to a reactive metabolite that can deplete glutathione (GSH) and covalently bind to certain proteins. Analysis of sera obtained from patients suffering from liver damage following TA exposure revealed the presence of highly specific anti-liver and kidney microsomal (anti-LKM2) autoantibodies [6] known to specifically recognize CYP450 2C9 in humans [7,8] and the corresponding isoform 2C11 in rats[9]. Subsequent studies have revealed that tienilic acid undergoes a selective CYP450 2C9-mediated bioactivation on its thiophene ring, resulting in the formation of a reactive intermediate that covalently modifies the enzyme [10] despite that a stable peptide conjugate has never characterized [11,12]. A relatively limited number of proteins appear to be modified by TA metabolites in both human and rat liver microsomes [9,10,13,14]. In contrast, the isomer of TA has been shown to be metabolized into a thiophene sulfoxide, leading to modification of many more proteins [9,15,16]. In addition, TA could be metabolized by other until now unknown or known enzymes without suicide inactivation resulting in protein modification but this has yet to be confirmed. For a number of carboxylic acid containing drugs, glucuronidation has been proposed to be a major metabolic pathway that potentially could increase the reactivity of certain drugs resulting in covalent modification of proteins [17]. The formation of reactive metabolites by this pathway and covalent protein modification has previously been demonstrated for numerous non steroidal anti-inflammatory drugs including ibuprofen [18], ketoprofen [19] and zomepirac [20] as well as for other drugs like mycophenolic acid [21], clofibrilic acid [20], diflunisal [22,23] and valproic acid [20]. Despite that proteins have been found to be covalently modified by reactive drug metabolites both *in vivo* and *in vitro*, only a

relatively small number have until now been identified. So far, proteomics approaches based on mass spectrometry and separation techniques suitable for this type of analysis, have only been used in a few cases [21,24,25]. Recently, we developed a new approach allowing the mass spectrometric analysis of immuno-reactive protein spots obtained from the membrane used for Western blotting and thus to identify post translationally modified proteins including those modified by reactive drug metabolites [26]. Except for CYP P450 2C9 and the 2C11 variant in rats, a comprehensive knowledge about what cellular proteins are covalently modified after exposure to TA is still lacking. The aim of the present study was to take advantage of a proteome approach exploiting pre-fractionation of cellular organelles and 2D Western blotting in combination with mass spectrometry to identify the comprehensive suite of modified rat liver proteins.

2.0 Experimental

2.1 Animals and sample preparation

The experimental protocol was approved by the institution animal care unit. Wistar rats (~200-250 g) were allowed to rest for one week before exposure to TA. Rats having received an injection intra-peritoneal of TA (100 mg of drug per kg of weight) or saline (control) were sacrificed at 4 and 24 hours respectively. The livers were immediately removed, sliced into small pieces with a clean scalpel and homogenized at 4°C in 7 ml of buffer (10mM Tris-HCl pH 7.5, 250 mM sucrose, 20 µl peptidase inhibitor cocktail) using a potter helm homogenizer with a loose pestle and 5-10 strokes per 1g of liver. These procedures were repeated in two independent experiments.

2.2 Enrichment of liver sub-cellular fractions by ultra-centrifugation.

Rat liver homogenate was centrifuged at 600 x g for 10 min to precipitate cell nuclei and cellular debris. The supernatant was collected, transferred into ultracentrifuge tubes and further centrifuged at 15.000 x g for 5 min. The precipitate represented fraction I. Centrifugation of the supernatant at 100.000 x g for 60 min resulted in fraction II. The last ultracentrifugation at 100.000 x g for 5 hours gave fraction III (precipitate) and fraction IV (supernatant). Centrifugations were performed at 4 °C using a Sorvall RC 5B plus centrifuge (Mandel, ON, Canada) and the enriched sub-cellular fractions were stored at -20°C until further analysis. Protein concentrations in each step were estimated using the BCA assay (Pierce, Rockford, IL, US). Samples were dissolved in 10% SDS and dilutions were made in 1% SDS prior to performing the assay as described by the manufacture.

2.3 2D Electrophoresis and protein staining.

Protein 2D SDS-PAGE separations were performed in the first dimension by isoelectric focusing (IEF), using ReadyStrips (pH 3-10, 4-7 and 5.5-6.7, 11 cm long, Bio-Rad, Mississauga, ON, Canada). The ReadyStrips were rehydrated overnight at room temperature in 185 µl of sample buffer (7M urea, 2M thiourea, 4% CHAPS, 100mM dithiothreitol, 1:50 volume of Biolyte pH 3-10, and a trace of bromophenol blue) containing 400 µg of protein. The IEF was performed using a PROTEAN IEF Cell system (Bio-Rad) at 20°C with the following voltage gradient: 250 V over 20 min, 250–8000 V over 2.5 h, and then 8000 V until 20 kVh was attained. After IEF, proteins were reduced for 10 min in equilibration buffer (50 mM Tris-HCl pH 8.8 containing 6 M urea, 30% glycerol and 2% SDS, 100mM DTT) and alkylated for 10 min in the dark with iodoacetamide (25 mg/ml) in the same buffer but without DTT. Proteins were then separated by SDS-PAGE according to the method of Laemmli {Laemmli, 1970 #197}

using 8-16% polyacrylamide gradient gels, for 150 min at 50 mA/gel. The gels were processed for Western blotting by transferring the proteins onto a PVDF membrane using a Trans-Blot SD semi-dry transfer cell (Bio-Rad, Mississauga, ON, Canada) for 55 min at 0.8 mA/cm² as described elsewhere {Mengue Methogo, 2005 #181}.

2.4 Immuno chemical detection.

PVDF membranes were rinsed after electroblotting for 5 min first in 20% MeOH and then in water prior to blocking for 10 min in 0.1% aqueous acetic acid containing 0.2% Tween 20. The proteins were stained in PBS containing 0.05% (v/v) Tween 20, 1% (v/v) acetic acid, and 0.1% (v/v) Fount India ink until visible bands appeared (30 min to 12h). The PVDF membrane was then rinsed in wash buffer (150 mM NaCl, 10 mM Tris-HCl pH 7.6, 0.05% Tween 20) and incubated overnight with the primary antiserum raised against TA (diluted 10.000x) in wash buffer. The antiserum was raised against BSA coupled to 5-chloro TA after activation of lysine residues with N-succinimidyl 3-(2-pyridyldithio)-propionate, prepared as described previously {Bonierbale, 1999 #196}. The anti-serum specificity was evaluated using competitive inhibition ELISA, -lactoglobulin coupled as described for BSA and serial dilutions of TA, TA conjugated with mercaptoethanol, ethacrynic acid, 2-,3-dichlorophenoxy acetic acid and TA-isomer {Bonierbale, 1999 #196}. Following incubation with primary anti-serum, the PVDF membrane was washed 4 x 5 min in wash buffer before incubation for 1h with monkey anti-rabbit IgG antibody (diluted 100.000x in wash buffer) conjugated with horseradish peroxidase. Following 4 x 5 min wash of the membrane in wash buffer, the ECL was developed as described by the manufacture for 1-2 min. In order to identify immuno-reactive protein spots on the PVDF membrane, the transparency obtained after ECL

detection was positioned on the membrane and pierced with a needle through the dark ECL spots leaving marks at the exact position. Membrane spots were then excised with a sharpened stainless steel tube and stored in Eppendorf tubes at -20 °C until further use.

2.5 On-membrane digestion.

On membrane proteolysis was performed as previously described {Mengue Methogo, 2005 #181} except for following modifications: After reduction and alkylation with iodoacetamide membrane pieces were rinsed 4x with 400 μ l 50% ACN in 100 mM ammonium bicarbonate buffer (ABC) which was found to efficiently diminish tween-20 contaminants resulting in cleaner nLC-MS analyses. The solvent used for digestion consisted of 100 mM ABC with 50% (v/v) anhydrous amine free N,N-dimethylformamide (Alfa Cesar, MA, US) and was prepared immediately before use. In brief, prior to digestion proteins were reduced in 20 μ l of 100 mM ABC containing 5 μ g μ l DTT for 45 min at 37 °C. Carbamidomethylation was carried out in 20 μ l of 200 mM ABC containing 25 μ g μ l iodoacetamide for 30 min in the dark. Following rinsing as described above, proteins were digested at 37 °C in 10 μ l 50 mM ABC containing 50% (v/v) DMF and 20 ng μ l sequencing grade trypsin (Promega, USA) with occasional centrifugation to avoid concentration of DMF in the proteolysis buffer. After 3 h and the addition of 1 μ l of 5 M urea, samples were incubated in an ultrasound bath for 2 min, transferred to injection vials and dried in an Eppendorf Vacufuge Concentrator until completely dry (about 1 h).

2.6 NanoLiquid chromatography-tandem mass spectrometry and data base searching.

Peptides derived from “on-membrane” digestion were analyzed by nanoliquid chromatography coupled on-line with tandem electrospray ionization time-of-flight mass spectrometry (nLC-ESIMS/MS) consisting of a capillary liquid chromatograph with autosampler and a QTOF 2E mass spectrometer (Waters, MA, US). Tryptic peptides were dissolved in 14 μ l solvent A (1% acetonitrile, 1% isopropanol in 0.2% aqueous formic acid), loaded onto a 0.5 mm x 250 μ m I.D union packed with Magic C18 AQ(200 A, 5 μ m; Michrom BioResources, Auburn, CA) and separated on a 100 μ m I.D x 10 cm capillary column packed with the same material. Each analysis was succeeded by injection of 10 μ l 50% (v/v) aqueous isopropanol followed by running a blank gradient, which efficiently eliminated contamination from sample carry over. The following linear gradient was used: from 10 to 70% B in 30 min, to 90% B in 5 min, and 10% B in 3 min. The flow rate was split approximately 10x to 0.25-0.30 μ l/min. Survey scans were acquired at 1.9 s/scan. Depending on the charge state and intensity, doubly and triply charged parent ions were automatically selected for tandem mass spectrometry acquired at 1 s/scan with a pre-set maximum of 5 scans per selected parent ion. Since singly charged parent ions were not selected for tandem mass spectrometry, the intensity threshold could be lowered to a minimum without the risk of spending acquisition time on ions from background, impurities and detergents. Although a low threshold is not a guaranty of acquiring MS/MS spectra useful for protein identification, it ensure selection of a maximum number of doubly and triply charged ions for MS/MS analysis, during the separation. Raw MS/MS spectra were processed automatically using the ProteinLynx software and converted into peak lists readable by the MASCOT search algorithm (<http://www.matrixscience.com>). The following search parameters were used: database;

MSDB, species; Rattus, allowance of two missed tryptic cleavages, oxidation of methionine and cysteine carbamidomethylation, fragment mass tolerance; 0.25 Da.

3.0 Results

To achieve a survey and identify the suite of rat liver proteins modified by TA metabolites, rats were treated with either saline (control) or TA (100 mg/kg). After time intervals of 4 and 24 hours, the liver was isolated, homogenized and proteins were separated by 2D SDS PAGE. In preliminary experiments, proteins from total liver homogenates were focused in the first dimension from pH 3-10 followed by separation in the second dimension on gradient polyacrylamide gels. Proteins modified covalently by TA metabolites were visualized on the corresponding Western blots with a polyclonal antiserum to TA [9]. A maximum of approximately 20 spots appeared to contain modified proteins, as judged by their immuno-reactivity. The spots were absent on Western blots of the control and appeared to increase in number from 4 to 24 h in two independent experiments. Although, it could not be entirely excluded that the increased intensity are due to variations in the sample amounts loaded onto the gels, the absence of immuno reactive spots in the control lead us to conclude that the immuno-reactivity was not due to non-specific cross reactivity of the antiserum (Figure 1). As the ECL images were very similar but the number of immuno-reactive spots was increased at 24 h, we decided to pursue the subsequent analyses using the liver recovered from this rat. All of the immuno-reactive spots were estimated to be within the isoelectric point range 5-7. This was further confirmed by 2D Western blotting of total liver homogenate after isoelectric focusing on 4-7 IPG strips (data not shown). Preliminary attempts to identify the modified proteins using on-membrane digestion, nLC-ESIMS/MS and data base

searching turned out to be complicated by the fact that the protein spots were highly heterogeneous because of incomplete protein separation (data not shown). Therefore, to improve the electrophoretic separation of the proteins and to increase the likelihood of detecting most proteins potentially adducted with TA, we took advantage of two sample purification steps. Firstly, total liver homogenates were subjected to rough pre-fractionation with ultra-centrifugation. This step resulted in four major fractions (I-IV). Secondly, the proteins were separated in the first dimension using IPG strips with a narrow pH range. An overview of the strategy used throughout this work is shown in figure 2. The four fractions, obtained after ultracentrifugation were subjected to isoelectric focusing using 5.5-6.7 immobilized strips, and subsequently proteins were resolved on 8-16% mini gradient gels. Following blotting onto PVDF membranes, TA adducted proteins were visualized by ECL as shown in figure 3. Comparison of the ECL revealed relatively similar images for the fractions with several overlapping spots. This indicates that either the immuno-reactive proteins are dispersed in several cellular locations and/or the separation capacity of ultracentrifugation, as expected, could be limited. The number of most abundant and reproducibly detected immuno-reactive spots in the four fractions ranged from 24 (fraction I), 24 (fraction II), 5 (fraction III) to 13 spots in fraction IV, with the latter enriched in soluble cytosolic proteins. No spots were observed on the corresponding control Western blots using fractionated liver homogenate from rats treated with saline (data not shown). Immuno-reactive spots from each fraction were excised from India ink stained PVDF membranes used for the Western blotting experiments and subsequently subjected to reduction, carbamidomethylation and on-membrane proteolysis with trypsin. The recovered peptides were analyzed by nLC-

MS/MS and corresponding proteins were identified in the Rattus protein data base using MASCOT. A total of 66 protein spots were analyzed, all resulting in positive protein identifications despite that most of the spots were not detectable by the India ink stain. An example of nLC-MS/MS analysis of tryptic peptides from spot 14, ultra centrifugation fraction II (Figure 3C,D and table II), is shown in figure 4. A flat HPLC gradient was used to insure sufficient time to produce tandem mass spectra of all doubly and triply charged ions with intensities above background level. Nine of the peptide ions selected for tandem mass spectrometry gave adequate spectra that could be unambiguously assigned to the iota chain of proteasome endopeptidase complex (EC 3.4.25.1). The results of all protein identifications are shown in table I-IV. As can be observed in table I-IV numerous spots contained multiple proteins compromising our ability to unambiguously identify certain modified proteins. Fortunately, the same protein could be identified in multiple immuno-reactive spots helping to pin-point which protein was modified among several co-migrating proteins. The presence of a common modified protein in multiple spots, although heterogeneous, explained the immuno-reactivity. The reasons for dispersion of proteins to more than one 2D spot are multifarious including different degrees of post translational modifications like phosphorylation, presence of various isoforms and the presence of fragments due to incomplete inactivation of all proteases in the cell lysate. Furthermore, many of the proteins suggested to be modified were observed in more than one Western blot of individual ultracentrifugation fractions and co-migrated with different proteins. Since the immuno-reactivity of the spots was maintained, this confirmed their assignment as modified proteins. For example, adenosylhomocysteinase could be identified in three out of the four fractions. In fraction

II (table II), adenosylhomocysteinase in spot 11 co migrated with a TAR DNA binding protein. However, adenosylhomocysteinase was also identified in fraction III (spot 4, table III) although it co-migrated here with alpha enolase and methionine adenosyl transferase. Finally, adenosylcysteinase was identified in three distinct immuno-reactive spots (10, 11 and 12) obtained from the PVDF membrane used for ECL detection of fraction IV (Figure 3). In these three spots, adenosylhomocysteinase co-migrated with one, two and five other proteins. Obviously, it cannot be ruled out that several immuno-reactive proteins co-migrated as shown in Fraction IV spot 12, which compromised the assignment of the immuno-reactivity. Six proteins were identified in spot 12 with 3 to 22 assigned tandem mass spectra and total Mowse scores ranging from 62 to 452. Since fumarylacetoacetase was identified unaccompanied in spot 13 and is present in spot 12, together with adenosylhomocysteinase it may be a candidate for the immuno-reactivity. Although it cannot be excluded, it is uncertain as to whether beta-alanine synthetase and 4-hydroxyphenylpyruvate dioxygenase are candidates because they constantly co-migrated with other highly potential immuno-reactive candidates (Table I, spot 9 and 10, Table II, spot 17, Table IV spot 11 and 12). Interpretation of collective data from the analyses of four fractions using the procedure described above resulted in a list of 15 candidate proteins shown in Table V that are likely to be modified by TA metabolites. Although rat albumin was found in most of the fractions and was identified in several of the spots, these analyses did not allow us to unambiguously conclude that rat albumin is modified by TA metabolites because the antiserum was raised against bovine albumin-TA conjugates. However, the absence of spots corresponding to rat albumin on control Western blots indicates that, if present, cross reactivity is limited. Furthermore, keratins

can easily contaminate carrier protein drug metabolite preparations. In both cases, antigen cross reactivity could not be completely eliminated, and thus these proteins were not included in table V.

4.0 Discussion

In the present work, we demonstrate that 2D Western blotting in direct conjunction with nLC-MS/MS can be used to identify rat liver proteins that are highly likely to be covalently modified by TA metabolites. Previously, the identification of proteins modified by drug metabolites using Western blotting was limited to in gel digestion of the proteins of interest after localisation of the spots on a 2D SDS PAGE gel using an ECL image obtained from immuno-blotting of a parallel gel. This method is useful when immuno-reactive proteins can be observed with mass spectrometry compatible gel staining methods. However, in our hands, this is not always the case rendering the location of the immuno-reactive spots very difficult due to the extensive discrepancy of ECL and gel staining images. In contrast, our method takes advantage of the fact that after on-membrane proteolysis it is possible to recover sufficient amount of peptides from the India ink stained PVDF membrane used for immuno-blotting to subsequently acquire high quality nLC-MS/MS data. Furthermore, the facility and precision by which the protein spots can be located on the PVDF membrane after superposition of the ECL image insure that the correct immuno-reactive spot is excised and the method is therefore likely to diminish faulty protein identifications. Considering the frequently high sensitivity of immuno-blotting one can not exclude that, from a mass spectrometry point of view, undetectable lower levels of immuno-reactive proteins could be present. The sensitivity of the method depends on the mass spectrometer used for analyses. With the

instrument used in this study, the lower limit of detection was estimated from injecting a standard peptide mixture to be about 25-50 femtomol per peptide in order to obtain adequate tandem mass spectra for protein identification. Of notice, the protein amount retained on the PVDF membrane of several immuno-reactive protein spots was insufficient for visualization by India ink staining. Although this compromised the choice of an appropriate spot size to excise, the dimension of our spot picking tool corresponded well to the vast majority of spots observed on the ECL transparency. Nevertheless, it can obviously not be excluded that some of the protein heterogeneity could be due to excision of closely located neighbouring proteins. Despite that relatively few immuno-reactive spots were homogenous, the occurrence of protein isomers in several spots from identical fractions and their co-migration with different proteins in other fractions aided in determining which proteins may be responsible for the immuno-reactivity observed by ECL. Optimal separation can be obtained with longer immobiline strips and larger 2D gels, however, at the expense of a larger consumption of antibodies and ECL reagents. Furthermore, larger gels are in general more fragile and difficult to handle for the purpose of immuno blotting. In light of these considerations, we chose to use a medium size gel (10 x 10 cm) compromising to some extent the protein separation. Attempts to determine which peptides, site and type of covalent modification(s) using the GPM search engine (http://rat.thegpm.org/tandem/thegpm_tandem.html) and calculated molecular weights of possible metabolites were unsuccessful. This is not surprising because only a minor fraction of a target protein is probably modified [27-29]. Thus, even if present, the amount of a modified peptide may be lower than the instrumental limit of detection. If the modification is fragile, it could undergo fragmentation in the electrospray-ms interface,

resulting in loss of further structural analysis. However, this is unlikely as covalent conjugates of both glutathione-TA and mercaptoethanol-TA isomer metabolites were successfully analysed by ESI-MS in earlier studies [12,16]. Nevertheless, it cannot be excluded that modified peptides could be labile in the LC solvent resulting in loss of adducts during separation, as proposed previously [11]. In summary, 15 proteins were found to be covalently modified. Surprisingly, Cytochrome P450 2C11 was not identified despite that the protein was previously reported to be modified by a reactive intermediary of TA [13]. In this study, densitometric quantification of immuno blots showed maximum modification to occur in rats 2-4 h after TA ingestion, followed by a steady decline until 36 h. The level of modification was approximately 20% of total after exposure for 24 h, the delay time we used, before isolating the liver for 2D Western blotting and protein identification. In addition, the conditions for immuno blotting were different because we did not use any protein blocking reagents. Finally, we separated the proteins by 2D electrophoresis using a method not especially optimized for membrane proteins, and since CYP 2C11 likely is a membrane bound protein and therefore notoriously more difficult to handle, it may well have escaped detection. Three proteins identified, which include selenium binding protein, disulfide isomerase and Hsc73, have been shown to be common targets for other reactive drug intermediates and chemicals in previous studies. Selenium binding protein 2 was previously found to be covalently modified by the reactive intermediary N-acetyl-p-benzoquinone, a metabolite of acetaminophen [30,31], metabolites of chemicals like 3'-hydroxyacetanilide [32] and bromobenzene [33]. The function of selenium binding protein is presently unknown but it has been suggested to function as a scavenger protein involved in the cellular defence mechanism [31]. In

contrast, the protein was recently shown to increase acetaminophen toxicity when over expressed in COS-1 cells, and thus, this subject is still controversial [34]. Because disulphide isomerase is an abundant protein involved in redox state control it is critical for maintaining apt cellular homeostasis. This protein catalyzes the rearrangement of disulphide bonds. Thus, the toxicological consequence(s) of a reactive TA intermediary may depend on the extent of modification and potential malfunction of disulphide isomerase. Similarly, this protein seems to be a common target for various reactive intermediaries including mycophenolic acid [21], naphthalene [25], halothane [35], bromobenzene [36], monocrotaline [37]. The dnaK-type molecular chaperone Hsc73, also called Hsc70 or Hspa8, was previously shown to be adducted by a reactive intermediary of naphthalene [25]. To our knowledge, the remaining 12 proteins identified have not previously been identified as targets for other reactive metabolites. Several of these proteins are enzymes that participate in metabolic (adenosine kinase, fumarylacetoacetase, ketohexokinase, triosephosphate isomerase, malate dehydrogenase) and catabolic (arginase) cellular processes. Capping protein (actin filament) is part of the cytoskeleton, whereas two proteins (senescence marker protein and superoxide dismutase) may be involved in cellular defence mechanisms. Adenosylhomocysteinase is thought to play a role in methylation via the regulation of adenosylhomocysteine. Finally, two of the targets are enzymes implicated in the cellular salvage of proteins (proteasome endopeptidase complex) and N-terminal blocked amino acids (Acy1). Future studies are required to evaluate if modification and/or collective inhibition of these enzymes either entirely or partly may cause cellular stress that together with implication of the immune

system could explain the mechanism involved in TA adverse reactions. This will entail the development of approaches to determine quantitatively ratio of modified versus unmodified target proteins and the consequential toxicological impact when this ratio is displaced.

Acknowledgements

Funding for this study came from Université de Sherbrooke, the Fonds de La Recherche Santé du Québec (FRSQ), and the National Science and Engineering Research Council (NSERC). Richard Wagner is greatly acknowledged for his constructive comments and corrections. Finally, I (K. Klarskov) would like to thank Prof. Peter Roepstorff for his always enthusiastic contagious engagement in research, formation of students (especially me!), long exciting stories and warm friendship.

References

- [1] Zimmerman, H. J. Lewis, J. H. Ishak, K. G. Maddrey, W. C. Hepatology 4 (1984) 315-323.
- [2] Pohl, L. R. Satoh, H. Christ, D. D. Kenna, J. G. Annu. Rev. Pharmacol. Toxicol. 28 (1988) 367-387.
- [3] Pirmohamed, M. Naisbitt, D. J. Gordon, F. Park, B. K. Toxicology 181-182 (2002) 55-63.
- [4] Seguin, B. Uetrecht, J. Curr. Opin. Allergy Clin. Immunol. 3 (2003) 235-242.
- [5] Uetrecht, J. Toxicology 209, (2005) 113-118.
- [6] Homberg, J. C. Abuaf, N. Helmy-Khalil, S. Biour, M. et al. Hepatology 5 (1985) 722-727.
- [7] Beaune, P. H. Lecoeur, S. Bourdi, M. Gauffre, A. et al. Eur. J. Haematol. Suppl. 60 (1996) 89-92.
- [8] Beaune, P. Dansette, P. M. Mansuy, D. Kiffel, L. et al. Proc. Natl. Acad. Sci. U. S. A. 84 (1987) 551-555.

- [9] Bonierbale, E. Valadon, P. Pons, C. Desfosses, B. et al. *Chem. Res. Toxicol.* 12 (1999) 286-296.
- [10] Dansette, P. M. Amar, C. Valadon, P. Pons, C. et al. *Biochem. Pharmacol.* 41 (1991) 553-560.
- [11] Koenigs, L. L. Peter, R. M. Hunter, A. P. Haining, R. L. et al. *Biochemistry* 38 (1999) 2312-2319.
- [12] Belghazi, M. Jean, P. Poli, S. Schmitter, J. M. et al. *Adv. Exp. Med. Biol.* 500 (2001) 139-144.
- [13] Robin, M. A. Maratrat, M. Le Roy, M. Le Breton, F. P. et al. *J. Clin. Invest.* 98 (1996) 1471-1480.
- [14] Lopez-Garcia, M. P. Dansette, P. M. Coloma, J. *Biochem. Pharmacol.* 70 (2005) 1870-1882.
- [15] Dansette, P. M. Amar, C. Smith, C. Pons, C. Mansuy, D. *Biochem. Pharmacol.* 39 (1990) 911-918.
- [16] Valadon, P. Dansette, P. M. Girault, J. P. Amar, C. Mansuy, D. *Chem. Res. Toxicol.* 9 (1996) 1403-1413.
- [17] Bailey, M. J. Dickinson, R. G. *Chem. Biol. Interact.* 145 (2003) 117-137.
- [18] Castillo, M. Lam, Y. W. Dooley, M. A. Stahl, E. Smith, P. C. *Clin. Pharmacol. Ther.* 57 (1995) 636-644.
- [19] Presle, N. Lapique, F. Fournel-Gigleux, S. Magdalou, J. Netter, P. *Drug Metab. Dispos.* 24 (1996) 1050-1057.
- [20] Bailey, M. J. Dickinson, R. G. *Chem. Res. Toxicol.* 9 (1996) 659-666.
- [21] Shipkova, M. Beck, H. Volland, A. Armstrong, V. W. et al. *Proteomics* 4 (2004) 2728-2738.
- [22] Dickinson, R. G. King, A. R. *Biochem. Pharmacol.* 46 (1993) 1175-1182.
- [23] King, A. R. Dickinson, R. G. *Biochem. Pharmacol.* 45 (1993) 1043-1047.
- [24] Williams, K. E. Carver, T. A. Miranda, J. J. Kautiainen, A. et al. *Mol. Cell. Proteomics* 1 (2002) 885-895.
- [25] Isbell, M. A. Morin, D. Boland, B. Buckpitt, A. et al. *Proteomics* 5 (2005) 4197-4204.
- [26] Methogo, R. M. Dufresne-Martin, G. Leclerc, P. Leduc, R. Klarskov, K. J. *Proteome Res.* 4 (2005) 2216-2224.

- [27] Volland, C. Sun, H. Dammeyer, J. Benet, L. Z. *Drug Metab. Dispos.* 19 (1991) 1080-1086.
- [28] Bolze, S. Bromet, N. Gay-Feutry, C. Massiere, F. et al. *Drug Metab. Dispos.* 30 (2002) 404-413.
- [29] Spahn-Langguth, H. Dahms, M. Hermening, A. *Adv. Exp. Med. Biol.* 387 (1996) 313-328.
- [30] Pumford, N. R. Martin, B. M. Hinson, J. A. *Biochem. Biophys. Res. Commun.* 182 (1992) 1348-1355.
- [31] Qiu, Y. Benet, L. Z. Burlingame, A. L. *J. Biol. Chem.* 273 (1998) 17940-17953.
- [32] Myers, T. G. Dietz, E. C. Anderson, N. L. Khairallah, E. A. et al. *Chem. Res. Toxicol.* 8 (1995) 403-413.
- [33] Manautou, J. E. Khairallah, E. A. Cohen, S. D. *J. Toxicol. Environ. Health* 46 (1995) 263-269.
- [34] Ishida, T. Abe, M., Oguri, K. Yamada, H. *Drug Metab. Pharmacokinet.* 19 (2004) 290-296.
- [35] Martin, J. L. Kenna, J. G. Martin, B. M. Thomassen, D. et al. *Hepatology* 18 (1993) 858-863.
- [36] Koen, Y. M. Hanzlik, R. P. *Chem. Res. Toxicol.* 15 (2002) 699-706.
- [37] Lame, M. W. Jones, A. D. Wilson, D. W. Segall, H. J. *Proteomics* 5 (2005) 4398-4413.

Table I. Proteins identified in fraction I.

spot ^a	Protein ID	Mr weight ^b	pI ^b	Mowse score	peptides Assigned ^c
1	Q5U3X3_RAT Albumin	70710	6,1	337	14
	Q5BKB4_RAT Hemopexin	52060	7,6	154	10
2	ABRTS serum albumin precursor	70670	6,1	692	26
	Q5BKB4_RAT Hemopexin	52060	7,6	163	9
3	ABRTS serum albumin precursor	70670	6,1	219	14
	S21089 alpha-1-microglobulin/inter-alpha-trypsin inhibitor light chain	39738	5,8	196	8
	Q66HD0_RAT Tumor rejection antigen gp96 (Predicted)	74390	5	50	2
4	AAH62393 BC062393 NID protein disulfide isomerase associated 3	57044	5.9	877	30
	ABRTS serum albumin precursor	70670	6,1	236	12
5	ABRTS serum albumin precursor	68674	6,1	262	7
	Q8VIF7_RAT Selenium binding protein 2	53069	6,1	171	8
	ABRTS serum albumin precursor	70670	6,1	115	6
	AAF43598 AF170918 NID	54530	6,6	95	3
6	Q8VIF7_RAT Selenium binding protein 2	53069	6,1	270	9
	AAF43598 4-trimethylaminobutyraldehyde dehydrogenase	54530	6,6	131	7
	Q5XIM9_RAT Chaperonin containing TCP1, subunit 2 (Beta).-	57764	6	90	4
7	Q6AYS7_RAT Acy1 protein	46060	6	186	13
8	A49098 N-hydroxyarylamine sulfotransferase, HAST-I	35855	6,1	83	6
	MDHC_RAT Malate dehydrogenase, cytoplasmic (EC 1.1.1.37)	36500	6,2	36	3
9	S27881 beta-alanine synthase	44584	6,5	146	9
	1D3VA arginase (EC 3.5.3.1), chain A	33423	6,6	61	2
10	S27881 beta-alanine synthase	44584	6,5	317	14
	JH0467 fumarylacetoacetase (EC 3.7.1.2)	33423	6,6	212	7
	A54756 isocitrate dehydrogenase (NADP) (EC 1.1.1.42),	47047	6,5	79	3
	AJRTQ glutamate-ammonia ligase (EC 6.3.1.2)	42982	6,6	49	3
	Q2IBC6_RAT Caveolin 1	20710	5,7	35	2
11	1D3VA arginase (EC 3.5.3.1), chain A - rat	33423	6,6	219	8
	S15835 3-oxo-5beta-steroid 4-dehydrogenase (EC 1.3.99.6) - rat	37639	6,2	176	10
	PPID_RAT 40 kDa peptidyl-prolyl cis-trans isomerase (EC 5.2.1.8)	41008	6,7	128	5
12	Q5EBB4_RAT Haptoglobin.- Rattus norvegicus	39052	6,1	312	14
	Q497B0_RAT Nitrilase family, member 2	31024	6,9	45	3
13	GBLP_BOVIN Guanine nucleotide-binding protein subunit beta 2-like 1	35380	7,6	306	11

	Q6AZ06_RAT Betaine-homocysteine methyltransferase.- Rattus norvegicus	45421	8	213	9
	GSTM1_RAT Glutathione S-transferase Mu 1 (EC 2.5.1.18)	25937	8,4	173	8
	GNMT_RAT Glycine N-methyltransferase (EC 2.1.1.20)	32796	7,2	118	5
	JU0133 translation elongation factor eEF-1 alpha chain - Chinese hamster	50424	9,1	80	4
	DERTMM malate dehydrogenase (EC 1.1.1.37) precursor, mitochondrial	36089	9,2	64	2
	Q66HT1_RAT Aldob protein.- Rattus norvegicus	39956	8,7	59	4
	JC5884 thyroid hormone sulfotransferase (EC 2.8.2.-) B1	35041	8,2	56	2
	AAF14047 AF021854 NID: - Rattus norvegicus	32698	8,9	49	2
	ADH1_RAT Alcohol dehydrogenase 1 (EC 1.1.1.1)	40401	8,5	48	3
	Q7TMC7_RAT Ab2-417 (Cc1-8).-	109510	8,4	46	3
14	Q66HT1_RAT Aldob protein	39956	8,7	368	17
	Q6AZ06_RAT Betaine-homocysteine methyltransferase	45421	8	225	9
	RTRS argininosuccinate synthase (EC 6.3.4.5)	46752	7,3	136	11
	PGK1_RAT Phosphoglycerate kinase 1 (EC 2.7.2.3).-	44794	7,5	91	8
	ADH1_RAT Alcohol dehydrogenase 1 (EC 1.1.1.1)	40401	8,5	89	6
	Q5M916_RAT Glyceraldehyde-3-phosphate dehydrogenase	36056	8,1	69	4
	Q9EQS4_RAT Cystathionine gamma-lyase (CTL target antigen).-	44236	7,4	46	2
15	JX0230 proteasome endopeptidase complex (EC 3.4.25.1) iota chain	27838	6,3	171	6
	GSTM1_RAT Glutathione S-transferase Mu 1 (EC 2.5.1.18) (GSTM1-1)	25937	8,4	55	3
	TPIS_RAT Triosephosphate isomerase (EC 5.3.1.1) (TIM)	27286	6,5	55	3
	1AFSA 3alpha-hydroxysteroid dehydrogenase (EC 1.1.1.50),				
16	PDIA6_RAT Protein disulfide-isomerase A6 precursor (EC 5.3.4.1)	48542	5	174	6
	Q6TUG0_RAT LRRGT00084 (DnaJ (Hsp40) homolog, subfamily B, member 11)	40755	5,9	134	7
17	Q66HT1_RAT Aldob protein.- Rattus norvegicus (Rat).	39956	8,7	425	18
	ADH1_RAT Alcohol dehydrogenase 1 (EC 1.1.1.1)	40401	8,5	74	4
	Q6P9U7_RAT Ldha protein	30041	9,2	76	7
	DERTG glyceraldehyde-3-phosphate dehydrogenase (EC 1.2.1.12)	36098	8,4	70	5
	DERTMM malate dehydrogenase (EC 1.1.1.37)	36089	8,9	58	2
	HAOX2_RAT Hydroxyacid oxidase 2 (EC 1.1.3.15) (HAOX2)	39502	7,9	54	2
	1D3VA arginase (EC 3.5.3.1), chain A	33423	6,6	43	2
	DHB4_RAT Peroxisomal multifunctional enzyme type 2 (MFE-2)	79760	8,8	41	2
18	Q5RKK4_RAT Sec31I1 protein.- Rattus norvegicus (Rat).	117889	7,3	139	5
	Q5U3X3_RAT Albumin.- Rattus norvegicus	70710	6,1	93	5
19	1D3VA arginase (EC 3.5.3.1), chain A	35122	6,6	114	7
	1AFSA 3alpha-hydroxysteroid dehydrogenase (EC 1.1.1.50), chain A	37172	7,5	54	2
20	Q9Z0V5_RAT PRx IV (Peroxiredoxin 4).-	31216	6,2	119	5
	Q4VAE6_MOUSE Ras homolog gene family, member A	22110	5,8	97	3
	ATP5H_RAT ATP synthase D chain, mitochondrial (EC 3.6.3.14).-	18678	6,2	63	4
	AAH85750 lysophospholipase 1	25034	6,1	59	3
	Q6Q288_RAT Mitochondrial aldehyde dehydrogenase (Fragment).-	56078	7,6	38	2
21	BAA09695 RATER60P NID:	57010	5,9	96	5
	TERA_RAT Transitional endoplasmic reticulum ATPase (TER ATPase)	89846	5,1	42	2

22	Q5U3X3_RAT Albumin.- Rattus norvegicus (Rat).	70710	6,1	382	13
	Q642G1_RAT Adenosine kinase.- Rattus norvegicus	40449	5,8	230	11
	Q6Q289_RAT Mitochondrial aldehyde dehydrogenase (Fragment).-	56078	7,6	130	7
	A28807 protein disulfide-isomerase (EC 5.3.4.1)	57044	6,4	103	6
	AAF43598 4-trimethylaminobutyraldehyde dehydrogenase	54530	6,6	68	3
23	Q5BKB7_RAT Ftcd protein	59504	5,8	649	24
	AAH62393 protein disulfide isomerase associated 3	57044	5,9	400	17
	ABRTS serum albumin precursor	70670	6,1	45	2
24	Q3T1K5_RAT Capping protein (Actin filament)	33118	5,6	120	4

- Spots are from the India ink stained 2D immuno-blot shown in figure 3A.
- Molecular weight and isoelectric point was obtained from the Mascot search engine.
- Number of peptides assigned to the protein entry.

Table II. Proteins identified in fraction II.

spot ^a	Protein ID	Mr weight ^b	pI ^b	Mowse score	peptides assigned ^c
1	JC4853 dnaK-type molecular chaperone hsc73 - mouse	71055	5,4	289	11
	Q5BKB4_RAT Hemopexin.- Rattus norvegicus (Rat).	52060	7,6	134	10
	Q5U3X3_RAT Albumin.- Rattus norvegicus	70710	6,1	119	5
	Q6IMF3_RAT Type II keratin Kb1.- Rattus norvegicus	65190	8	55	3
2	Q5U3X3_RAT Albumin.-	70710	6,1	373	14
	JC4853 dnaK-type molecular chaperone hsc73 - mouse	71055	5,4	118	6
	Q5BKB4_RAT Hemopexin.-	52060	7,6	49	4
3	Q5U3X3_RAT Albumin.- Rattus norvegicus	70710	6,1	256	8
4	AAH62393 protein disulfide isomerase associated 3	57044	5,9	371	16
	Q5U3X3_RAT Albumin.-	70710	6,1	309	14
	AAF43598 AF170918 NID	54530	6,6	68	2
5	AAF43598 4-trimethylaminobutyraldehyde dehydrogenase	54530	6,6	115	4
	A28807 protein disulfide-isomerase (EC 5.3.4.1)	57044	6,4	112	6
	Q5BKB7_RAT Ftcd protein	59504	5,8	66	3
6	ENOA_RAT Alpha-enolase (EC 4.2.1.11)	46967	6,2	191	8
	Q8VIF7_RAT Selenium binding protein 2.-	52498	6,1	187	8
	AAF43598 AF170918 NID:	53618	6,6	163	5
	Q5XIM9_RAT Chaperonin containing TCP1, subunit 2 (Beta).-	57422	6	137	6
7	ATCHB actin beta - chicken	42052	5,3	173	6
8	Q6AYS7_RAT Acy1 protein.- Rattus norvegicus (Rat).	46060	6	163	8
9	S34588 senescence marker protein SMP-30	33938	5,4	134	4
10	R5RT10 acidic ribosomal protein P0, cytosolic [similarity]	34350	5,9	107	3
	MDHC_RAT Malate dehydrogenase, cytoplasmic (EC 1.1.1.37)	36500	6,2	68	2
11	SAHH_RAT Adenosylhomocysteinase (EC 3.3.1.1)	47889	6,1	348	12
	Q5XID2_RAT TAR DNA binding protein (Predicted).-	32526	6,5	59	4
12	Q5BKC2_RAT Endoplasmic reticulum protein 29	28614	6,2	76	4
	S40468 proteasome subunit RC10-li	23235	6,2	70	3
13	S32426 ketohexokinase (EC 2.7.1.3)	33299	6,2	465	14
14	JX0230 proteasome endopeptidase complex (EC 3.4.25.1)	27838	6,3	274	9

15	TPIS_RAT Triosephosphate isomerase (EC 5.3.1.1) (TIM)	27286	6,5	85	3
16	HPPD_RAT 4-hydroxyphenylpyruvate dioxygenase (EC 1.13.11.27)	45181	6,3	217	10
17	S27881 beta-alanine synthase	44584	6,5	247	11
	JH0467 fumarylacetoacetase (EC 3.7.1.2)	46231	6,7	42	2
18	1AFSA 3alpha-hydroxysteroid dehydrogenase (EC 1.1.1.50),	37172	7,3	202	7
	Q6IMF3_RAT Type II keratin Kb1.- Rattus norvegicus (Rat).	65190	8	139	4
19	SODC_RAT Superoxide dismutase [Cu-Zn] (EC 1.15.1.1).-	15492	5,9	281	8
20	CAH3_RAT Carbonic anhydrase 3 (EC 4.2.1.1) (Carbonic anhydrase III)	29567	7	196	10
	JC1132 phosphoglycerate mutase (EC 5.4.2.1) B chain	28928	6,7	100	5
	Q4V8M8_RAT Hagh protein (Fragment).- Rattus norvegicus	34036	7,8	87	5
	TPIS_RAT Triosephosphate isomerase (EC 5.3.1.1)	27286	6,5	40	2
21	PSA2_RAT Proteasome subunit alpha type 2 (EC 3.4.25.1)	25893	7,1	270	9
	GSTM2_RAT Glutathione S-transferase Mu 2 (EC 2.5.1.18) (GSTM2-2)	25726	7,3	105	4
22	TPIS_RAT Triosephosphate isomerase (EC 5.3.1.1)	27286	6,5	82	3
	Q6IMF3_RAT Type II keratin Kb1.- Rattus norvegicus				
23	Q4V8I9_RAT UDP-glucose pyrophosphorylase 2.-	57159	7,2	67	3
24	GSTM1_RAT Glutathione S-transferase Mu 1 (EC 2.5.1.18)	25937	8,4	117	4
	Q6IMF3_RAT Type II keratin Kb1.- Rattus norvegicus	65190	8	110	4
	Q6IFU8_RAT Type I keratin KA17.- Rattus norvegicus (Rat).	48378	5	78	3
	K2C8_RAT Keratin, type II cytoskeletal 8 (Cytokeratin-8)	53854	5,8	78	3

a. Spots are from the India ink stained 2D immuno-blot shown in figure 3C.

b. Molecular weight and isoelectric point was obtained from the Mascot search engine.

c. Number of peptides assigned to the protein entry.

Table III. Proteins identified in fraction III.

spot ^a	Protein ID	Mr weight ^b	pI ^b	Mowse score	peptides assigned ^c
1	GRP75_R Stress-70 protein	74086	6	460	12
	JC4853 dnaK-type molecular chaperone hsc73	71055	5,4	255	10
2	Q8VIF7_RAT Selenium binding protein 2	53069	6,1	92	7
3	Q642G1_RAT Adenosine kinase.- Rattus norvegicus (Rat).	40449	5,8	146	5
4	ENOA_RAT Alpha-enolase (EC 4.2.1.11)	47309	6,2	238	9
	SAHH_RAT Adenosylhomocysteinase (EC 3.3.1.1)	47889	6,1	107	5
	S06114 methionine adenosyltransferase (EC 2.5.1.6)	44240	5,6	51	3
5	MDHC_RAT Malate dehydrogenase, cytoplasmic (EC 1.1.1.37)	36500	6,2	198	11

a. Spots are from the India ink stained 2D immuno-blot shown in figure 3E.

b. Molecular weight and isoelectric point was obtained from the Mascot search engine.

c. Number of peptides assigned to the protein entry.

Table IV. Proteins identified in fraction IV.

spot ^a	Protein ID	Mr weight ^b	pI ^b	Mowse score	peptides assigned ^c
1	Q9JKB7_RAT Guanine deaminase	51439	5,5	47	3
	I59346 glutathione synthase (EC 6.3.2.3)	52597	5,5	47	2
2	DOPD_D-dopachrome decarboxylase (EC 4.1.1.84)	13108	6,2	208	9
	RJRT0 retinol-binding protein, cellular	15995	5,1	84	2
	FABPB_Fatty acid-binding protein, brain (B-FABP)	15008	5,5	71	3
3	Q5U3X3_RAT Albumin.-	70710	6,1	396	15
	Q5BKB4_RAT Hemopexin.-	52060	7,6	110	7
4	Q6IMF3_RAT Type II keratin Kb1.- Rattus norvegicus	65190	8	131	5
5	ABRTS serum albumin precursor	70670	6,1	831	31
6	Q5U3X3_RAT Albumin	70710	6,1	100	2
	DDAH1_NG,NG-dimethylarginine dimethylaminohydrolase1(EC3.5.3.18)	31674	5,8	95	3
7	Q8VIF7_RAT Selenium binding protein 2	53069	6,1	197	9
	AAF43598 AF170918 NID	54530	6,6	193	8
	ENOA_RAT Alpha-enolase (EC 4.2.1.11)	47309	6,2	106	6
	ABRTS serum albumin precursor	70670	6,1	104	3
	Q6Q288_RAT Mitochondrial aldehyde dehydrogenase (Fragment).-	56078	7,6	90	3
8	Q642G1_RAT Adenosine kinase.- Rattus norvegicus (Rat).	40449	5,8	365	18
9	Q5U3X3_RAT Albumin.- Rattus norvegicus	70710	6,1	198	5
	Q6Q290_RAT Mitochondrial aldehyde dehydrogenase (Fragment).-	56051	6,4	65	5
	A28807 Protein disulfide-isomerase	57010	5,9	54	4
10	Q6AYS7_RAT Acy1 protein.- Rattus norvegicus (Rat).	46060	6	301	16
	SAHH_RAT Adenosylhomocysteinase (EC 3.3.1.1)	47889	6,1	203	6
	AAF43598 AF170918 NID	54530	6,6	152	7
11	SAHH_RAT Adenosylhomocysteinase (EC 3.3.1.1)	47889	6,1	675	26
	HPPD_RAT 4-hydroxyphenylpyruvate dioxygenase (EC 1.13.11.27)	45181	6,3	51	5
12	HPPD_RAT 4-hydroxyphenylpyruvate dioxygenase (EC 1.13.11.27)	45181	6,3	452	22
	S27881 beta-alanine synthase	44584	6,5	112	6
	AAL61609 AF393243 NID:	41771	6,2	156	7
	JH0467 fumarylacetoacetase (EC 3.7.1.2)	46231	6,7	110	5
	Q68FT9_RAT Selenocysteine lyase	47682	6,2	104	4
	SAHH_RAT Adenosylhomocysteinase (EC 3.3.1.1)	47889	6,1	62	3

13	JH0467	fumarylacetoacetase (EC 3.7.1.2)	46231	6,7	188	9
----	--------	----------------------------------	-------	-----	-----	---

- Spots are from the India ink stained 2D immuno-blot shown in figure 3G.
- Molecular weight and isoelectric point was obtained from the Mascot search engine.
- Number of peptides assigned to the protein entry

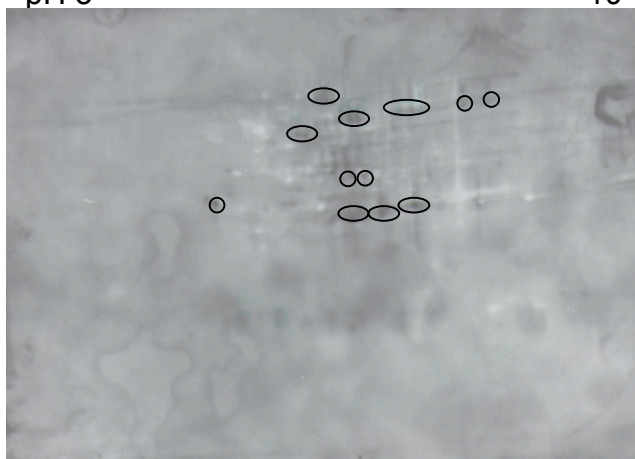
Table V. Identified protein targets likely to be modified by reactive intermediates of TA.

Protein ID	Mr weight ^a	pI ^a
Selenium binding protein 2	53069	6,1
senescence marker protein SMP-30	33938	5,4
Adenosin kinase	40449	5,8
Acy1 protein	46060	6,0
Adenosylhomocysteinase	47889	6,1
Capping protein (Actin filament)	33118	5,6
ENOA_RAT Alpha-enolase (EC 4.2.1.11)	47309	6,2
Fumarylacetoacetase	33423	6,6
Arginase chain A	35122	6,6
Ketohexokinase	33299	6,2
Proteasome endopeptidase complex	27838	6,3
Triosephosphate isomerase	27286	6,5
Superoxide dismutase	15492	5,9
Malate dehydrogenase	36500	6,2

- Molecular weight and isoelectric point was obtained from the Mascot search program.

pH 3

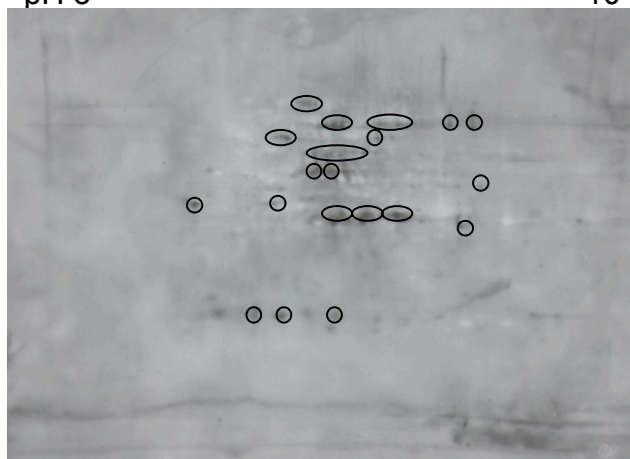
10



A

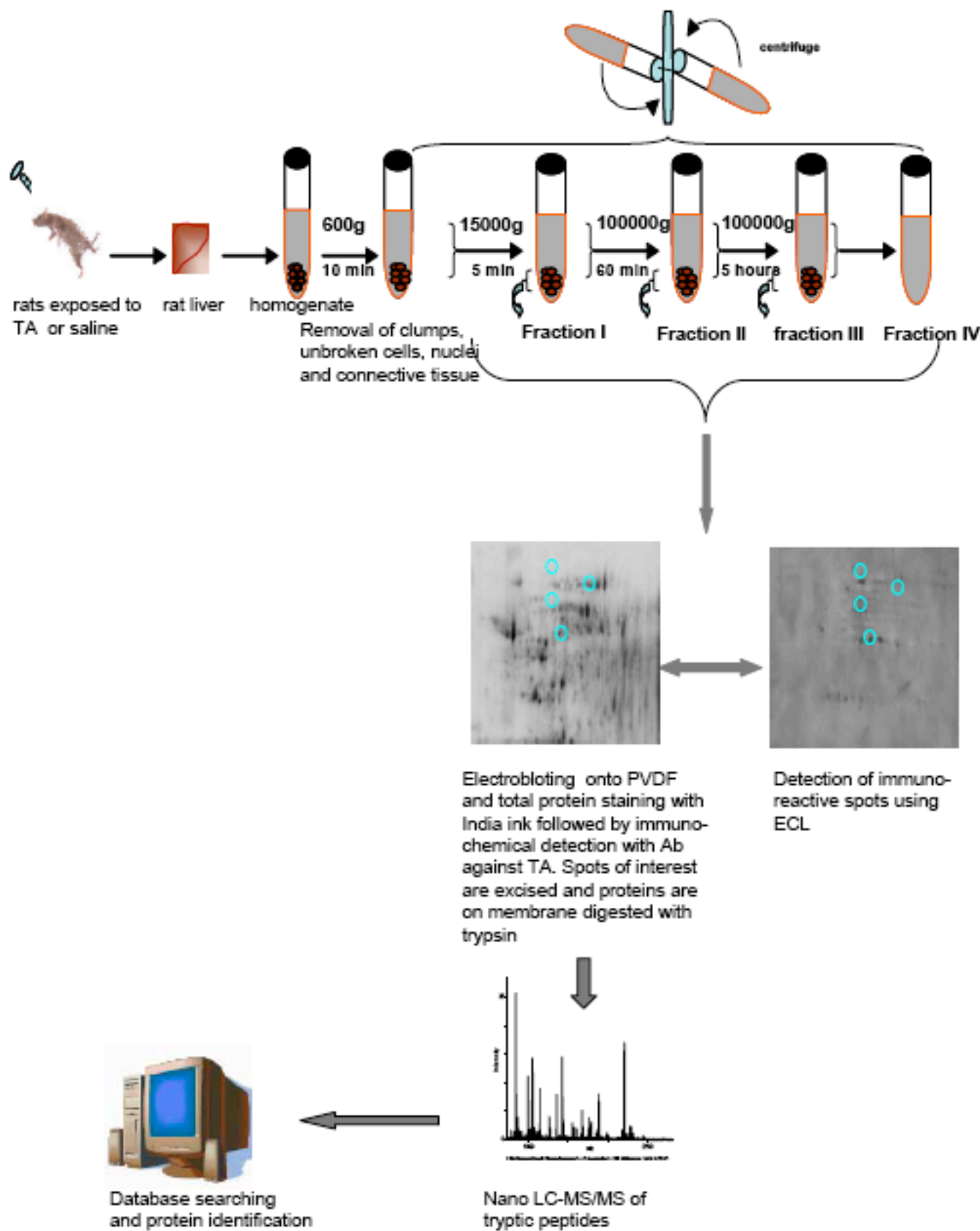
pH 3

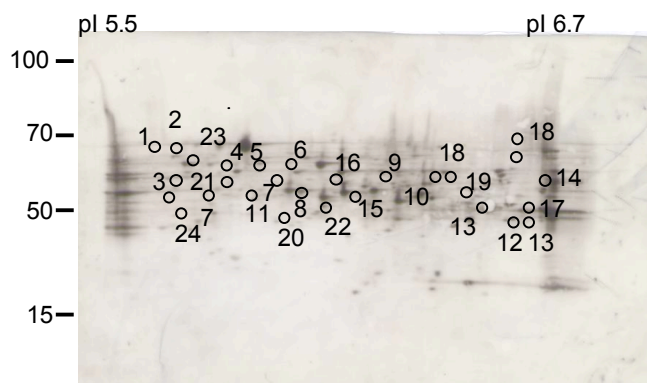
10



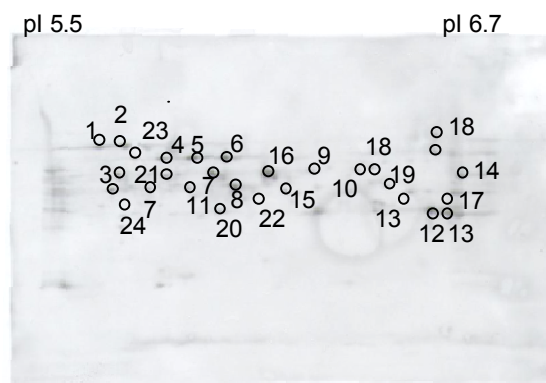
B

Figure 2.

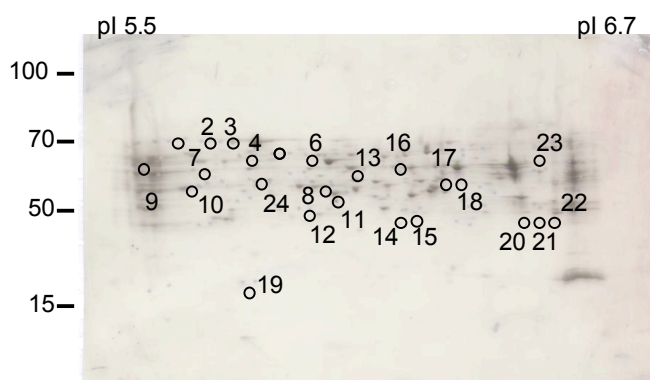




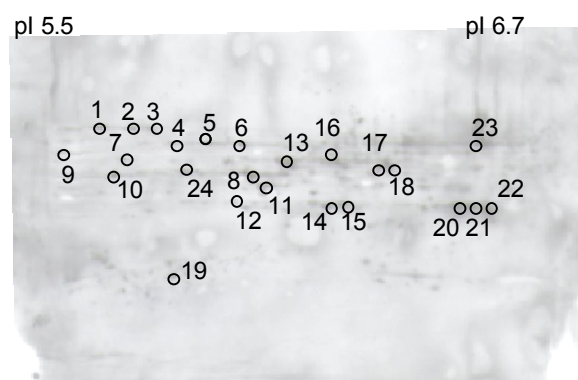
A



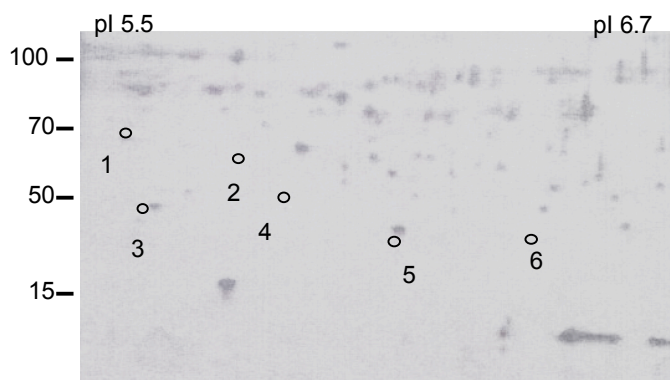
B



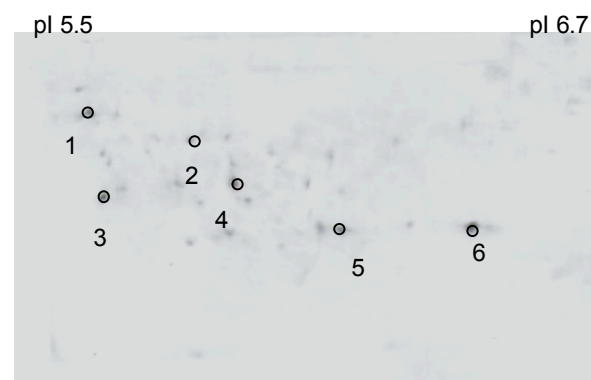
C



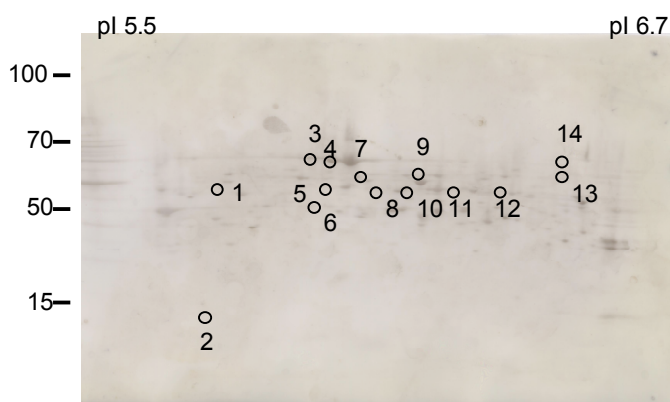
D



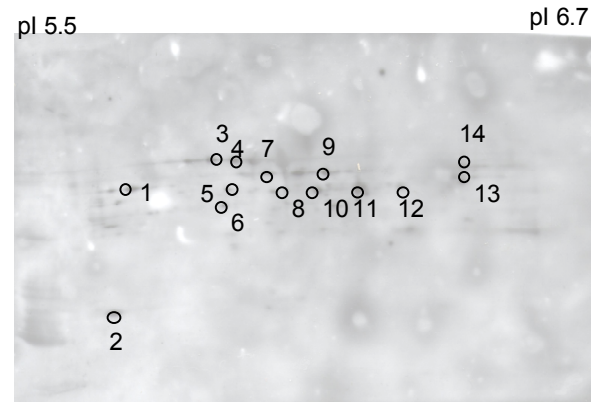
E



F



G



H

Figure 3

Figure 4.

