



**HAL**  
open science

## Secreted molecules and their role in embryo formation in plants : a min-review.

Elisabeth Matthys-Rochon

► **To cite this version:**

Elisabeth Matthys-Rochon. Secreted molecules and their role in embryo formation in plants : a min-review.. *acta Biologica Cracoviensia*, 2005, 47, pp.23-29. hal-00188834

**HAL Id: hal-00188834**

**<https://hal.science/hal-00188834>**

Submitted on 31 May 2020

**HAL** is a multi-disciplinary open access archive for the deposit and dissemination of scientific research documents, whether they are published or not. The documents may come from teaching and research institutions in France or abroad, or from public or private research centers.

L'archive ouverte pluridisciplinaire **HAL**, est destinée au dépôt et à la diffusion de documents scientifiques de niveau recherche, publiés ou non, émanant des établissements d'enseignement et de recherche français ou étrangers, des laboratoires publics ou privés.

Copyright



## SECRETED MOLECULES AND THEIR ROLE IN EMBRYO FORMATION IN PLANTS: A MINI-REVIEW

ELISABETH MATTHYS-ROCHON\*

*Reproduction et développement des plantes (RDP), UMR 5667 CNRS/INRA/ENS/LYON1,  
46 Allée d'Italie, 69364 Lyon Cedex 07, France*

Received January 15, 2005; revision accepted April 2, 2005

This short review emphasizes the importance of secreted molecules (peptides, proteins, arabinogalactan proteins, PR proteins, oligosaccharides) produced by cells and multicellular structures in culture media. Several of these molecules have also been identified in planta within the micro-environment in which the embryo and endosperm develop. Questions are raised about the parallel between in vitro systems (somatic and androgenetic) and in planta zygotic development. A view of exchanges between embryonic and nonembryonic multicellular structures in vitro is presented, and several facts about embryo and endosperm molecular interactions in planta are reported. Analysis of in vitro mechanisms may help in understanding what happens during zygotic embryogenesis.

**Key words:** Secreted stimulating factors, signaling molecules, tissue culture, zygotic, somatic, androgenetic embryogenesis, endosperm-embryo interrelations.

### INTRODUCTION

Embryo development in plants starts after double fertilization and leads to the formation of an embryo and a second structure called the endosperm. They are both situated within the growing seed. Although numerous studies have been done, it is still unknown how an embryo is formed (Goldberg et al., 1994; Matthys-Rochon et al., 1997; Matthys-Rochon, 2002). Complex mechanisms operating during embryogenesis enable the development of a new plant. One obstacle in studying this development is the positioning of the embryo and endosperm within the maternal tissues. They are difficult to access for experimental manipulation, especially in very early stages of development.

One possible way to overcome this difficulty is to study what happens during in vitro culture, such as somatic and pollen embryogenesis. Somatic embryogenesis is the process by which asexual (somatic) cells develop into plants under in vitro conditions (Zimmerman, 1993; Mordhorst et al., 1997). Pollen or microspore embryogenesis, also referred to as androgenesis, is a method of developing haploid embryo after stress treatment (Touraev et al., 1997; Goralski et al., 1999). After cell multiplication and differentiation, these two systems generate embryos and subsequently plantlets

without fusion of gametes as in zygotic development. In these in vitro cultures, the environment of the cells mimics the conditions that exist in ovulo.

Besides hormones known to stimulate embryo formation (Zimmerman, 1993; Matthys-Rochon et al., 1998), other classes of molecules have been identified as embryo-stimulating factors, especially those secreted into the culture medium. For many years, cell and tissue culture researchers have recognized the benefits of conditioned medium, in which cells have been grown previously, for the establishment of new cell lines or embryos (Halperin, 1966; Hari, 1980).

This review will focus on several groups of molecules that have a promoting effect on in vitro embryo development and which have been identified sometimes during zygotic seed formation. Then basic zygotic development will be compared with in vitro development in terms of the interrelations between embryo and endosperm, and between their in vitro counterparts.

### OLIGOSACCHARIDES

The cell walls in plants are complex structures of multiple carbohydrates and proteins. In addition to its role as a structural framework, the cell wall serves as

\*e-mail: ematthysrochon@free.fr

an extracellular matrix that contains signaling information for plant growth and development (Chasan, 1992; Mohnen and Hahn, 1993; Fry et al., 1993; Strauss, 1998; Sheen et al., 1999; Malinowski and Filipecki, 2002). Oligosaccharides derived from the plant cell wall have been identified in conditioned medium in different cell suspension cultures, including spinach (Fry, 1986), maize (Paire et al., 2003; Goralski et al., 2002), tobacco (Sims et al., 1996) and rice (Inui et al., 1996).

It is generally thought that the production of oligosaccharides in culture medium is the result of carbohydrate or glycoprotein splitting by cell wall enzymes. The resulting oligosaccharides might contribute to the nutrition of the developing structures, but also to the control of the embryogenic process. Thus, endogenous Nod-factor-like signal molecules have been shown to promote early somatic embryo development in Norway spruce (Dyachock et al., 2002). Wiweger et al. (2003) demonstrated in this gymnosperm that lipophilic low molecular weight molecules with Glc Nac residues are secreted by embryogenic cultures. The data indicate that lipo-chitinooligosaccharides (LCOs) homologous with rhizobial Nod factors are present in plants and stimulate proliferation of proembryogenic masses and somatic embryo formation (Dyachock et al., 2002).

### PEPTIDES

Signaling peptides have been identified and well studied in animals and more recently in plants (Ryan et al., 2002). In plant cultures, only a few molecules are known which act on cell division and/or embryo development. Phytosulfokines (PSKs) are disulfated 4-5-amino-acid peptides first isolated from *Asparagus* cell suspension culture medium (Matsubayashi and Sakagami, 1996). In carrot somatic embryogenesis, Hanai et al. (2000) demonstrated the presence of PSK in conditioned medium of embryonic cell culture, and the stimulating action of this sulfated peptide on embryo formation. The authors showed that PSK is not capable of inducing embryogenic competence but that its addition to an embryo-inducing culture increased the number of cells and accelerated somatic embryo formation. PSK also stimulates somatic embryogenesis in *Cryptomeria japonica* (Igasaki et al., 2003). The putative receptor proteins for this autocrine-type growth factor were identified by photoaffinity labelling of plasma membrane fractions derived from rice suspension cells (Matsubayashi and Sakagami, 2000), and more recently a PSK receptor has been purified from membrane fractions of carrot cells (Matsubayashi et al., 2002). Overexpression of this receptor-like kinase in carrot cells enhances callus growth in response to PSK and substantially increases the number of PSK-binding sites, indicating that PSK and this receptor-like

kinase act as a ligand-receptor pair. Now that the in vitro function of PSK and the molecular basis of ligand-receptor interaction in PSK signaling have been established, the next phase of research is characterization of the in vivo role of PSK and its downstream signaling pathway in plants (Matsubayashi et al., 2002). This study will provide the means to elucidate the mode of action of these PSKs in embryogenesis in vitro.

Important studies have been done on polypeptide hormones in plants (for review: Ryan et al., 2002). In particular, the amino acid sequence of the polypeptide RALF (Rapid Alkalinization Factor) has been determined. A search of databases revealed the existence of RALF homologs in more than 15 plant species. This polypeptide seems to have a role in development, especially in the germination of seeds. Although the function of these novel peptides remains unknown, experiments suggest their role may be developmental. We may thus suppose that this molecule acts on embryo development (Pearce et al., 2001; Haruta and Constabel 2003).

### ARABINOGALACTAN PROTEINS

Media conditioned by plant cell cultures contain the small molecules mentioned above, but also larger ones like arabinogalactan proteins (AGPs) and pathogenesis-related proteins (PR proteins). They have been supposed to have a role in embryo formation.

The AGPs are a family of proteoglycans with very high carbohydrate content (90–98%) and consisting of high levels of arabinosyl and galactosyl residues and branched structures. In addition, their protein core is rich in hydroxyproline, serine, alanine and glycine (van Engelen and de Vries 1993; Showalter, 2001; Majewska-Sawka and Nothnagel, 2000). AGPs are detected with specific antibodies (Knox, 1997; Knox et al., 1991; McCabe et al., 1997; Pennel et al., 1989; Smallwood et al., 1995) or with  $\beta$ -Yariv reagent which binds to AGP and can be used as an inhibitor (Yariv et al., 1962). Briefly, in somatic embryogenesis, AGPs have been identified in cell culture medium of carrot (Kreuger and van Holst, 1993; McCabe et al., 1997), *Chichorium* (Chapman et al., 2000), rose (Svetek et al., 1999) and haploid cell cultures of barley (Paire et al., 2003) and maize (Borderies et al., 2004) microspores. Variation in the quantity of AGPs, their increase and subsequent decrease during the course of culture, has suggested that they are developmentally regulated, and it has been demonstrated that embryo development is inhibited if their action is blocked by Yariv reagent (van Hengel et al., 2002; Borderies et al., 2004). It is important to note that AGPs have also been detected in zygotic development of carrot and maize (van Hengel et al., 2002; Borderies et al., 2004), and they are secreted into cultures of endosperm cells (Gleeson et al., 1989).

### PATHOGENESIS-RELATED (PR) PROTEINS

The enzymes (PR proteins; van Loon, 1990) that have been detected in the cell culture media are mainly glucanases, chitinases and thaumatins. In embryonic suspension cells of barley, Kragh et al. (1991) isolated three chitinases and one  $\beta$ -1,3-glucanase, some of them having similarities to those present in barley grain.  $\beta$ -1,3-glucanases have also been identified in *Chichorium* somatic embryogenesis (Helleboid et al., 1998, 2000), and to our knowledge the only example of the presence of  $\beta$ -1,3-glucanases in haploid development has been shown in maize (Borderies et al., 2004). It is known that the cell wall around embryonic cells contains callose. The callose deposition disappears as embryos grow. For this reason, it has been hypothesized that the culture medium accumulates  $\beta$ -1,3-glucanases, which may be responsible for degradation of the callose in the cell wall of embryogenic cells. The corresponding genes of these enzymes have been cloned, and their expression supports the hypothesis of a positive role of this enzyme during somatic embryogenesis in *Chichorium* (Helleboid et al., 2000).

Another interesting example is the determination and expression of *Chia4-Pa* chitinase genes during both somatic and zygotic development in Norway spruce (*Picea abies*). The presence and similarities of chitinases in angiosperms and gymnosperms have been reported, and a correlation between the increase of activity of *Chia4-Pa* genes and the induction of somatic embryos has been demonstrated (Wiweger et al., 2003). Recently the presence of chitinases has been detected in conditioned media of maize microspore culture, but at the moment nothing is precisely known about their role (Borderies et al., 2004).

Thaumatins have been identified in maize microspore embryonic suspension cultures and also in barley (Osmond et al., 2001) and wheat (YU et al., 2003) seeds. Thaumatins are PR proteins capable of binding and hydrolyzing  $\beta$ -1,3-glucans (Trudel et al., 1998; Grenier et al., 1999) and releasing oligosaccharides.

In carrot somatic embryogenesis, conditioned media has been reported to have a promoting effect on embryo formation (Hari, 1980; Smith and Sung, 1985). During the course of cultures, secreted proteins increase, and among them EP1 (extracellular protein 1) is released by nonembryogenic cells (van Engelen et al., 1993), whereas EP2 is secreted only by embryonic cells (Sterk et al., 1991). Another protein called EP3 was identified, corresponding to a chitinase. De Jong et al. (1992) showed that EP3 was able to rescue blocked mutant (*ts11*) embryos. The chitinases have been thought to be involved in generation of signal molecules essential for embryogenesis (de Jong et al., 1993). The responsible mechanism is largely unknown. Interestingly, EP3 was also found in developing carrot seeds. Chitinases could be expected to play a role in zygotic embryogenesis also.

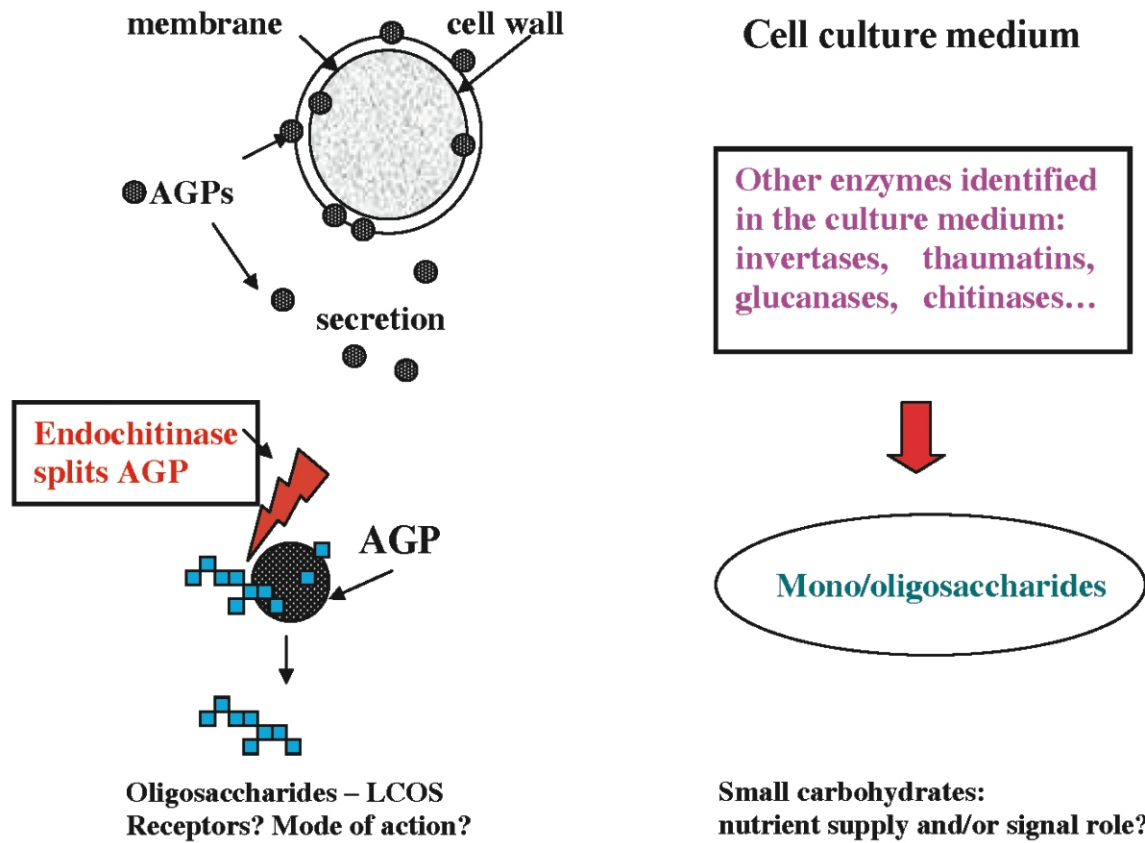
The presence of EP3 may result in the generation of GlcNAc-containing molecules that have a stimulating effect on the development of somatic embryos, compared to the action of chitinases capable of hydrolyzing Nod factors (Staehelin et al., 1994). In another species, Norway spruce, endogenous Nod-factor-like signal molecules have been shown to promote embryo development (Dyachock et al., 2002). Finally, it is known that AGPs contain endochitinase cleavage sites (Van Hengel et al., 1998; Showalter, 2001). Thus, endochitinases can split AGPs and generate small molecules like oligosaccharides which may be signals to developing embryos.

### SIGNALING BETWEEN EMBRYO AND ENDOSPERM STRUCTURES

In planta, the embryo develops from the fertilized egg cell (zygote), and the endosperm from the fertilized central cell. In cultures in vitro, competent cells lead to the formation of embryonic or nonembryonic structures which in turn generate embryo-like structures and endosperm-like structures in time. The question of exchanges between these different cellular structures arises, and painstaking research is needed to determine the role of secreted molecules in the two developmental systems.

The interaction between the embryo and the endosperm has been investigated mainly in terms of the nutritive aspects of endosperm as an "embryo nourishing tissue" (Schel et al., 1984; Lopes and Larkins, 1993). Indeed, endosperm seems to be absolutely required for the nourishment of young embryos (Friedman, 1995; Matthys-Rochon, 2002). Questions arise about the active molecules that appear in vivo within the microenvironment and promote normal development. The dependence of early embryonic development on the endosperm is also implied by apomictic studies (Koltunow 1993; Bicknell and Koltunow, 2004). Has the endosperm uniquely a nutritive role?

First, in somatic and haploid embryogenesis, the occurrence of two populations of multicellular structures, termed embryogenic and nonembryogenic, has been demonstrated. The idea has emerged of two types of developing structures with different potentialities: endosperm-like and embryo-like (Magnard et al., 2000; Testillano et al., 2002; Massoneau et al., 2005). Second, several molecules identified in the medium of in vitro cultures are also present in the developing seed. These molecules, AGPs (van Hengel et al., 2002; Paire et al., 2003; Borderies et al., 2004), PSK (Yang et al., 1999), chitinase, thaumatin and  $\beta$ -1,3-glucanase (Kragh et al., 1991; Helleboid et al., 1998, 2000; Borderies et al., 2004), are supposed to be or to generate signal molecules which direct the fate of cells (McCabe et al., 1997) and help to establish their



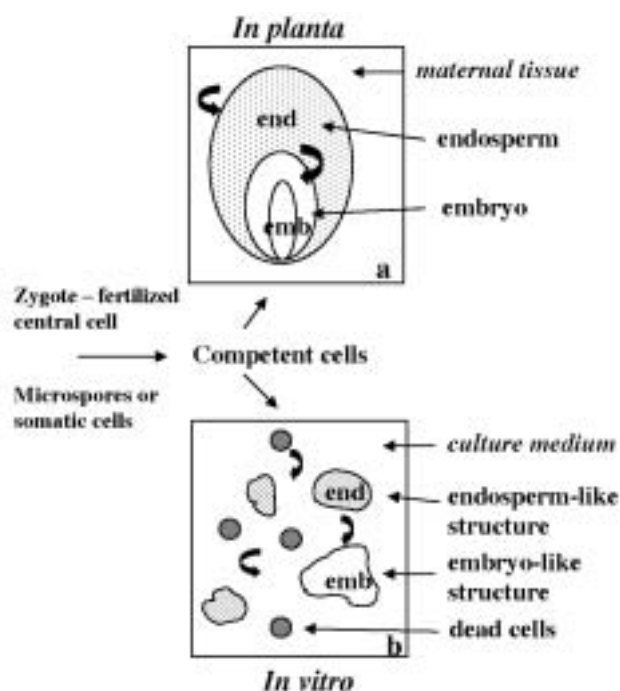
**Fig. 1.** Enzymes secreted by cells into culture medium and their possible role. Left: AGPs are present on the membrane and cell wall of cells in culture. They are released into the medium and may be hydrolyzed by endochitinases; oligosaccharides are generated. Right: Other identified enzymes that produce small carbohydrates (mono-, oligosaccharides) which may be either nutrients or signal molecules or both. The precise mechanisms that involve oligosaccharides in developmental processes are unknown.

embryonic competence and/or to direct the enlargement and further development of the embryo (Hanai et al., 2000).

In different species in culture, as reported above, PR proteins have been identified which may have a precise role in embryo development, associated with their function. Endo- $\beta$ -1,3-glucanases are thought to produce oligosaccharides (Kragh et al., 1991; Helleboid et al., 1998, 2000); thaumatins, which bind to  $\beta$ -1,3-, may hydrolyze these carbohydrates (Trudel et al., 1998; Osmond et al., 2001) and release oligoglucosides (Grenier et al., 1999). Chitinases, which have been detected in different cell type cultures, can split AGPs and release oligosaccharides (Showalter, 2001; van Hengel et al., 2001). Thus, multicellular structures that secrete these different types of enzymes can produce small molecules (signal molecules?) which may intervene in embryo development. In addition, oligosaccharides present in or produced in

culture media may be both signals and/or nutrients. The possible mechanisms generating small carbohydrates are showed in Figure 1. Enzymes and AGPs have been described in the surroundings of the developing embryo in planta (van Hengel et al., 1998; Massoneau et al., 2005), in endosperm (van Hengel et al., 2002), or secreted by endosperm cells in culture (Miernyk, 1987). Figure 2 summarizes the possible interactions that may occur in planta between embryo and endosperm, and compares them with what may happen between embryogenic and nonembryogenic structures in vitro.

This review and other data (Massoneau et al., 2005) suggest that in vitro developing structures may have endosperm or embryo potentialities, and may interact through signal molecules which direct embryo development. In this way, in vitro cultures mimic what exists in planta.



**Fig. 2.** Possible exchanges between in vitro or in planta embryo and endosperm structures. (a) After double fertilization, the zygote and the fertilized central cell become competent and develop into two structures (embryo and endosperm represented here in a grass seed). Arrows indicate interactions between embryo and endosperm and probably with maternal tissue (van Hengel et al., 2002). (b) Comparison with the probable situation in cell cultures (microspores or somatic cells), where competent cells generate embryonic (emb) and nonembryonic (end) structures. Secreted molecules are released and help the embryo to form (curved arrows). (Borderies et al., 2004; Massoneau et al., 2005).

## CONCLUSION

This review does not cover all the recent progress in the study of plant signal molecules (Minorsky, 2003) and their influence on embryological processes.

During the last decade, biochemical studies have demonstrated that during embryo formation in plants, different types of molecules, mainly oligosaccharides, enzymes and arabinogalactan proteins (this review), are synthesized and secreted into the cell environment, and that they play a developmental role. Biochemical studies will be completed with investigations of genes and mutant strategies. Thus, the mechanisms involved in embryo formation are soon likely to be elucidated more completely. Thus, the challenge in the coming years will be (1) to determine the potential function of the stimulating molecules, and (2) to identify the ligands and receptors that take part in the construction of the embryo by stimulating

metabolic pathways which permit the differentiation and growth of a new plantlet.

The categories of molecules that have been cited are embryo-stimulating factors, but the list is not complete (Weber, 2002). Fatty acids are new candidates in the search for signal molecules acting in plant development and possibly on embryo formation.

This review raises a crucial question: do the identified molecules present and important in development in vitro also function during the development of zygotic embryos? At the moment, the factors that act on cells in vitro to make them behave like zygotes are unknown, and the same applies to the specificity of substances emanating from the endosperm. It seems likely that the endosperm has two roles: to give nutrients to the embryo and to direct its fate.

It is fascinating to think that cells in vitro seem to invent processes similar to those that occur in planta. This makes study and comparison of the two types of development a powerful tool. Although in recent years there has been much progress in understanding how a plant embryo forms, there is still a long way to go.

## ACKNOWLEDGEMENTS

The author thanks Dr. Elizabeth Bates for critically reading the manuscript.

## REFERENCES

- BORDERIES G, LE BECHEC M, ROSSIGNOL M, LAFFITE C, LE DEUNFF E, BECKERT M, DUMAS C, and MATTHYS-ROCHON E. 2004. Characterisation of proteins secreted during maize microspore culture: arabinogalactan proteins (AGPs) stimulate embryo development. *European Journal of Cell Biology* 83: 205–212.
- BICKNELL RA, and KOLTUNOW AM. 2004. Understanding apoptosis: recent advances and remaining conundrums. *Plant Cell* 16: 228–245.
- CHAPMAN A, BLERVACQ AS, VASSEUR J, and HILBERT JL. 2000. Arabinogalactan proteins in *Chichorium* somatic embryogenesis: effect of  $\beta$ -glucosyl Yariv reagent and epitope localisation during embryo development. *Planta* 211: 305–314.
- CHASAN R. 1992. Developing somatic embryos. *The Plant Cell* 4: 367–368.
- COTE F, and HAHN MG. 1994. Oligosaccharides and signal transduction. *Plant Molecular Biology* 26: 1379–1411.
- DE JONG AJ, CORDEVENER J, LOSCHIAVO F, TERZI M, VANDEKERCKHOVE J, VAN KAMMEN A, and DE VRIES SC. 1992. A secreted chitinase can rescue arrested somatic embryos of a temperature-sensitive carrot cell variant. *The Plant Cell* 4: 425–433.
- DE JONG AJ, HEIDSTRA R, SPAINK HP, HARTOG M, MELJER EA, HENDRICKS T, LOSCHIAVO F, TERZI M, BISSELING T, VAN KAMMEN A, and DE VRIES SC. 1993. *Rhizobium* lipooligosaccharides rescue a carrot somatic embryo mutant. *The Plant Cell* 5: 615–620.

- DYACHOCK JV, WIWEGER M, KENNE L, and VON ARNOLD S. 2002. Endogenous Nod-factor-like signal molecules promote early somatic embryo development in Norway spruce. *Plant Physiology* 128: 523–533.
- FRIEDMAN WE. 1995. Organismal duplication, inclusive fitness theory, and altruism: understanding the evolution of endosperm and the angiosperm reproductive syndrome. *Proceedings of National Academy of Sciences U.S.A.* 92: 3913–3917.
- FRY SC. 1986. In vivo formation of xyloglucan nonsaccharide: a possible biologically active cell wall fragment. *Planta* 169: 443–453.
- FRY SC, ALDINGTON S, HETHERINGTON PR, and AITKEN J. 1993. Oligosaccharides as signals and substrates in the plant cell wall. *Plant Physiology* 103: 1–5.
- GLEESON PA, MCNAMARA M, WETTENHALL RE, STONE BA, and FINCHER GB. 1989. Characterization of the hydroxyproline-rich protein core of an arabinogalactan-protein secreted from suspension cultured *Lolium multiflorum* (Italian ryegrass) endosperm cells. *Biochemical Journal* 264: 857–862.
- GOLDBERG RB, DE PAIVA G, and YADEGARI R. 1994. Plant embryogenesis: zygote to seed. *Science* 266: 605–614.
- GORALSKI G, MATTHYS-ROCHON E, VERGNE P, and PRZYWARA L. 1999. Androgenetic development: a fascinating embryo formation process. *Acta Biologica Cracoviensis Series Botanica* 41: 51–65.
- GORALSKI G, LAFITTE C, BOUAZZA L, MATTHYS-ROCHON E, and PRZYWARA L. 2002. Influence of sugars on isolated microspore development in maize (*Zea mays* L.). *Acta Biologica Cracoviensis Series Botanica* 44: 203–212.
- GRENIER J, POTVIN C, TRUDEL J, and ASSELIN A. 1999. Some thaumatin-like proteins hydrolyse polymeric  $\beta$ -1,3-glucans. *The Plant Journal* 19: 473–480.
- HALPERIN W. 1966. Alternative events in cell suspensions. *American Journal of Botany* 53: 443–453.
- HANAI H, MATSUNO T, YAMAMOTO, MATSUBAYASHI Y, KOBAYASHI T, KAMADA H, and SAKAGAMI Y. 2000. A secreted peptide growth factor, phytosulfokine, acting as a stimulatory factor of carrot somatic embryo formation. *Plant Cell Physiology* 41: 27–32.
- HARI U. 1980. Effect of cell density changes and conditioned media on carrot cell embryogenesis. *Zeitung Physiologie* 96: 227–231.
- HARUTA M, and CONSTABEL CP. 2003. Rapid alkalization factors in poplar cell cultures. Peptide isolation, cDNA cloning, and differential expression in leaves and methyl jasmonate-treated cells. *Plant Physiology* 131: 814–823.
- HELLEBOID S, BAUW G, BELINGHERI L, and HILBERT JL. 1998. Extra cellular  $\beta$ -1,3-glucanases are induced during early somatic embryogenesis in *Chichorium*. *Planta* 205: 56–63.
- HELLEBOID S, HENDRICKS T, BAUW G, INZE D, VASSEUR, J, and HILBERT JL. 2000. Three major somatic embryogenesis related proteins in *Chichorium* identified as PR proteins. *Journal of Experimental Botany* 51: 1189–1200.
- IGASAKI T, AKASHI N, UJINO-IHARA T, MATSUBAYASHI Y, SAKAGAMI Y, and SHINOHARA K. 2003. Phytosulfokine stimulates somatic embryogenesis in *Cryptomeria japonica*. *Plant Cell Physiology* 44: 1412–1416.
- INUI H, YAMAGUCHI Y, ISHIGAMI Y, KAWAGUCHI S, YAMADA T, IHARA H, and HIRANO S. 1996. Three extracellular chitinases in suspension-cultured rice cells elicited by N-acetylchitooligosaccharides. *Biosciences Biotechnologies and Biochemistry* 60: 1956–1961.
- KNOX JP. 1997. The use of antibodies to study the architecture and developmental regulation of plant cell walls. *International Review of Cytology* 171: 79–120.
- KNOX JP, LINSTED PJ, PEART J, COOPER C, and ROBERTS K. 1991. Developmentally regulated epitopes of cell surface arabinogalactan proteins and their relation to root tissue pattern formation. *The Plant Journal* 1: 317–326.
- KOLTUNOW AM. 1993. Apomixis: embryo sacs and embryos formed without meiosis or fertilisation in ovules. *The Plant Cell* 5: 1425–1437.
- KRAGH KM, JACOBSEN S, MIKKELSEN JD, and NIELSEN KA. 1991. Purification and characterisation of three chitinases and one  $\beta$ -1,3-glucanase accumulated in the medium of cell suspension cultures of barley (*Hordeum vulgare* K.). *Plant Science* 76: 65–77.
- KREUGER M, and VAN HOLST GJ. 1993. Arabinogalactan proteins are essential in somatic embryogenesis of *Daucus carota* L. *Planta* 189: 243–248.
- LOPES MA, and LARKINS BA. 1993. Endosperm origin, development, and function. *The Plant Cell* 5: 383–1399.
- MAGNARD JL, LE DEUNFF E, DOMENECH J, ROGOWSKY PM, TESTILLANO PS, ROUGIER M, RISUEÑO MC, VERGNE P, and DUMAS C. 2000. Genes normally expressed in the endosperm are expressed at early stages of microspore embryogenesis in maize. *Plant Molecular Biology* 44: 559–574.
- MAJEWSKA-SAWKA, and NOTHNAGEL EA. 2000. The multiple roles of arabinogalactan proteins in plant development. *Plant Physiology* 122: 3–10.
- MALINOWSKI R, and FILIPECKI M. 2002. The role of cell wall in plant embryogenesis. *Cellular and Molecular Biology Letters* 7: 1137–1151.
- MASSONEAU A, CORONADO MJ, AUDRAN A, BAGNIEWSKA A, MÓL R, TESTILLANO PS, GORALSKI G, DUMAS C, RISUEÑO MC, and MATTHYS-ROCHON E. 2005. Multicellular structures developing during maize microspore culture express endosperm and embryo-specific genes and show different embryogenic potentialities. *European Journal of Cell Biology* (in press)
- MATSUBAYASHI Y, and SAKAGAMI Y. 1996. Phytosulfokines, sulfated peptides that induce the proliferation of single mesophyll cells of *Asparagus officinalis* L. *Proceedings of National Academy of Sciences U.S.A.* 93: 7623–7627.
- MATSUBAYASHI Y, and SAKAGAMI Y. 2000. 120- and 160-kDa Receptors for endogenous mitotic peptide, phytosulfokine- $\alpha$ , in rice plasma membranes. *Journal of Biological Chemistry* 275: 15520–15525.
- MATSUBAYASHI Y, OGAWA M, MORITAA, and SAKAGAMI Y. 2002. An LRR receptor-like kinase involved in perception of a peptide plant hormone, phytosulfokine. *Science* 296: 1470–1472.
- MATTHYS-ROCHON E. 2002. Fascinating questions raised by the embryonic development in plants. *Biologia, Bratislava* 57: 1–4.
- MATTHYS-ROCHON E, PIOLA F, BONELLO JF, and DUMAS C. 1997. Genes involved in embryo and endosperm development in flowering plants: a minireview. *Bulletin of the Polish Academy of Sciences, Biological Sciences* 45: 2–4.
- MATTHYS-ROCHON E, PIOLA F, LE DEUNFF E, MOL R, and DUMAS C. 1998. In vitro development of maize immature embryos: a tool for embryogenesis analysis. *Journal of Experimental Botany* 49: 839–845.
- MCCABE PF, VALENTINE TA, FORSBERG LS, and PENNELL RI. 1997. Soluble signals from cells identified at the cell wall establish

- MCCABE PF, VALENTINE TA, FORSBERG LS, and PENNELL RI. 1997. Soluble signals from cells identified at the cell wall establish a developmental pathway in carrot. *The Plant Cell* 9: 225–241.
- MIERNYK JA. 1987. Extracellular secretion of acid hydrolases by maize endosperm cells grown in liquid medium. *Journal of Plant Physiology* 129: 19–32.
- MINORSKY P. 2003. Frontiers in plant cell biology: signals and pathways, system-based approaches. *22nd Symposium in plant Biology*, University of California–Riverside. *Plant Physiology* 132: 428–435.
- MOHNEN D, and HAHN MG. 1993. Cell wall carbohydrates as signals in plants. *Cell Biology* 4: 93–102.
- MORDHORST AP, TOONEN MAJ, and DE VRIES SC. 1997. Plant embryogenesis. *Critical Review in Plant Sciences* 16: 535–576.
- OSMOND RI, HRMOVA M, FONTAINE F, IMBERTY A, and FINCHER GB. 2001. Binding interactions between barley thaumatin-like proteins and 1-3-beta-D-glucans. Kinetics, specificity, structural analysis and biological implications. *European Journal of Biochemistry* 268: 4190–4199.
- PAIRE A, DEVAUX P, LAFITTE C, DUMAS C, and MATTHYS-ROCHON E. 2003. Proteins produced by barley microspores and their derived androgenic structures promote in vitro zygotic maize embryo formation. *Plant Cell, Tissue and Organ Culture* 73: 167–176.
- PEARCE G, MOURA DS, STRATMANN J, and RYAN CA. 2001. RALF a5kDa ubiquitous polypeptide in plants, arrests root growth and development. *Proceedings of National Academy of Sciences U.S.A.* 98: 12843–12847.
- PENNELL RI, KNOX JP, SCOTFIELD GN, SELVENDRAN RR, and ROBERTS K. 1989. A family of abundant plasma membrane-associated glycoproteins related to the arabinogalactan proteins is unique to flowering plants. *Journal of Cell Biology* 108: 1967–1977.
- RYAN CA, PEARCE G, SHEER J, and MOURA DS. 2002. Polypeptide hormones. *The Plant Cell* 14: 251–254
- SCHL JN, KIEFT H, and VAN LAMMEREN AAM. 1984. Interactions between embryo and endosperm during early developmental stages of maize caryopses (*Zea mays*). *Canadian Journal of Botany* 62: 2842–2853.
- SHOWALTER AM. 2001. Arabinogalactan-proteins: structure, expression and function. *Cell Molecular Life Sciences* 58: 1399–1417.
- SHEEN J, CHOU L, and YANG JC. 1999. Sugars as signaling molecules. *Current Opinion in Cell Biology* 2: 410–418.
- SIMS IM, MUNRO SL, CURRIE G, CRAIK D, and BACIC A. 1996. Structural characterisation of xyloglucan secreted by suspension-cultured cells of *Nicotiana plumbaginifolia*. *Carbohydrate Research* 293: 147–172.
- SMALLWOOD M, MARTIN H, and KNOX JP. 1995. An epitope of rice threonine- and hydroxyproline-rich glycoprotein is common to cell wall and hydrophobic plasma-membrane glycoproteins. *Planta* 196: 510–522.
- SMITH JA, and SUNG ZR. 1985. Increase in regeneration of plant cells by cross feeding with regenerating *Daucus carota* cells. In: Terzi M, Pitto L, Sung ZR [eds.], *Somatic embryogenesis*, 133–137. Iucremento Produttivita Risorce Agricole, Rome.
- STRAUSS E. 1998. When walls can talk, plant biologists listen. *Science* 282: 28–29.
- STAEHELIN C, SCHULTZE M, KONDOROSI E, MELLOR RB, BOLLER T, and KONDOROSI A. 1994. Structural modifications of *Rhizobium meliloti* Nod factors influence their stability against hydrolysis by root chitinases. *The Plant Journal* 5: 319–330.
- STERK P, BOOIJ H, SCHELLEKENS GA, VAN KAMMEN A, and DE VRIES SC. 1991. Cell-specific expression of the carrot EP2 lipid transfer protein gene. *The Plant Cell* 3: 907–921.
- SVETEK J, YADAV MP, and NOTHNAGEL EA. 1999. Presence of glycosylphosphatidylinositol lipid anchor on rose arabinogalactan proteins. *Journal of Biological Chemistry* 274: 14724–14733.
- TESTILLANO PS, RAMIREZ C, DOMENECH J, CORONADO MJ, VERGNE P, MATTHYS-ROCHON E, and RISUEÑO MC. 2002. Young microspore-derived maize embryos show two domains with defined features also present in zygotic embryogenesis. *International Journal of Developmental Biology* 46: 1035–1047.
- TOURAEV A, VICENTE O, and HEBERLE-BORS E. 1997. Initiation of microspore embryogenesis by stress. *Trends in Plant Science* 2: 297–302.
- TRUDEL J, GRENIER J, POTVIN C, and ASSELIN A. 1998. Several thaumatin-like proteins bind to  $\beta$ -1,3-glucans. *Plant Physiology* 118: 1431–1438.
- VAN ENGELLEN FA, and DE VRIES SC. 1993. Extracellular proteins in plant embryogenesis. *Trends in Genetics* 8: 66–70.
- VAN HENGEL AJ, GUZZO F, VAN KAMMEN A, and DE VRIES SC. 1998. Expression pattern of the carrot EP3 endochitinase genes in suspension cultures and in developing seeds. *Plant Physiology* 117: 43–53.
- VAN HENGEL AJ, TADESSE ZF, IMMERZEEL P, SCHOLS H, VAN KAMMEN A, and DE VRIES SC. 2001. N-Acetylglucosamine and glucosamine containing arabinogalactan proteins control somatic embryogenesis. *Plant Physiology* 125: 1880–1890.
- VAN HENGEL AJ, VAN KAMMEN A, and DE VRIES SC. 2002. A relationship between seed development, Arabinogalactan proteins (AGPs) and the AGP mediated promotion of somatic embryogenesis. *Physiologia Plantarum* 114: 637–644.
- VAN LOON LC. 1990. The nomenclature of pathogenesis-related proteins. *Physiological and Molecular Plant Pathology* 37: 229–230.
- WEBER H. 2002. Fatty-acid derived signals in plants. *Trends in Plant Science* 7: 217–224.
- WIWEGER M, FARBOS I, INGOUFF M, LAGERCRANTZ, and VON ARNOLD S. 2003. Expression of *Chia4-Pa* chitinase genes during somatic and zygotic embryo development in Norway spruce (*Picea abies*): similarities and differences between gymnosperm and angiosperm class IV chitinases. *Journal of Experimental Botany* 54: 2691–2699.
- YANG H, MATSUBAYASHI Y, NAKAMURA K, and SAKAGAMI Y. 1999. *Oryza sativa* gene encodes a precursor of phytosulfokine- $\alpha$ , a sulfated peptide growth factor found in plants. *Proceedings of the National Academy of Sciences U.S.A.* 96: 13560–13565.
- YARIV, J. RAPPORT MM, and GRAF L. 1962. The interaction of glycosides and saccharides with antibody to the corresponding phenylazo-glycosides. *Biochemical Journal* 85: 383–388.
- YU L, NIU JS, MA ZQ, CHEN PD, and LIU DJ. 2003. Cloning, mapping and protein expression of wheat thaumatin protein gene (TaTLP1). *Yi Chuan Xue Bao* 30: 49–55.
- ZIMMERMAN JL. 1993. Somatic embryogenesis: a model for early development in higher plants. *The Plant Cell* 5: 1411–1423.