



HAL
open science

Synthesis, structural characterization and properties of aluminum (III) meso-tetraphenylporphyrin complexes axially bonded to phosphinate anions

Sébastien Richeter, Julien Thion, Arie van Der Lee, Dominique Leclercq

► **To cite this version:**

Sébastien Richeter, Julien Thion, Arie van Der Lee, Dominique Leclercq. Synthesis, structural characterization and properties of aluminum (III) meso-tetraphenylporphyrin complexes axially bonded to phosphinate anions. *Inorganic Chemistry*, 2006, 45 (25), pp.10049. 10.1021/ic0617801 . hal-00183619

HAL Id: hal-00183619

<https://hal.science/hal-00183619v1>

Submitted on 30 Oct 2007

HAL is a multi-disciplinary open access archive for the deposit and dissemination of scientific research documents, whether they are published or not. The documents may come from teaching and research institutions in France or abroad, or from public or private research centers.

L'archive ouverte pluridisciplinaire **HAL**, est destinée au dépôt et à la diffusion de documents scientifiques de niveau recherche, publiés ou non, émanant des établissements d'enseignement et de recherche français ou étrangers, des laboratoires publics ou privés.

Synthesis, structural characterization and properties of aluminum (III) *meso*-tetraphenylporphyrin complexes axially bonded to phosphinate anions

Sébastien Richeter,^{*,†} Julien Thion,[†] Arie van der Lee,[‡] Dominique Leclercq[†]

Laboratoire de Chimie Moléculaire et Organisation du Solide, UMR 5637, Université Montpellier II, CC 007, Place Eugène Bataillon, 34095 Montpellier Cedex 05, France, and Institut Européen des Membranes, UMR 5635, Université Montpellier II, CC 047, Place Eugène Bataillon, 34095 Montpellier Cedex 05, France.

RECEIVED DATE (will be automatically inserted after manuscript is accepted)

Aluminum (III) *meso*-tetraphenylporphyrins axially bonded to phosphinate anions have been synthesized and characterized by NMR and UV-visible spectroscopy, single crystal X-ray diffraction and FAB⁺ mass spectrometry. According to the solvent, these compounds are able to self-assemble in two different manners.

A self-assembly process can be described as a spontaneous association of molecules under equilibrium into stable aggregates held together by non-covalent bonds.¹ Such phenomena are frequent in biological systems and an outstanding example is provided by bacteriochlorophyll molecules.² Metalloporphyrins are attractive compounds for the design of self-assembling chromophores.³ The axial coordination on the metal center is a powerful synthetic way to synthesize large multiporphyrinic systems.⁴ Actually, much attention have been paid to porphyrin containing zinc(II), magnesium(II), tin(IV) or rhodium(III) as metal centers.⁵ Although aluminum(III) porphyrins are well known for their catalytic properties and their rich photo- and electrochemistry,⁶ their use as molecular building blocks for the design of porphyrin arrays remains limited. The synthesis of porphyrin arrays including aluminum (III) porphyrins is mostly limited to the use of phenolates⁷ and carboxylates⁸ as the axial ligand. Surprisingly there is no example of aluminum(III) porphyrins axially bonded to phosphinate anions.

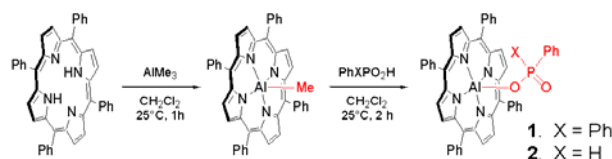


Figure 1. Synthesis of the complexes 1 and 2.

Here, we report the synthesis of aluminum(III) *meso*-tetraphenylporphyrin (Al^{III}TPP) complexes axially bonded

to phosphinate anions and present their properties as supramolecular building blocks. The complexes 1 and 2 were obtained by a “one-pot” strategy using the *meso*-tetraphenylporphyrin free base (H₂TPP) as starting material (Figure 1). H₂TPP was treated with AlMe₃ and the phosphinic acid derivative was added to the reactive intermediate Me-Al^{III}TPP. The desired complexes 1 and 2 were obtained in high yield (85-87%).

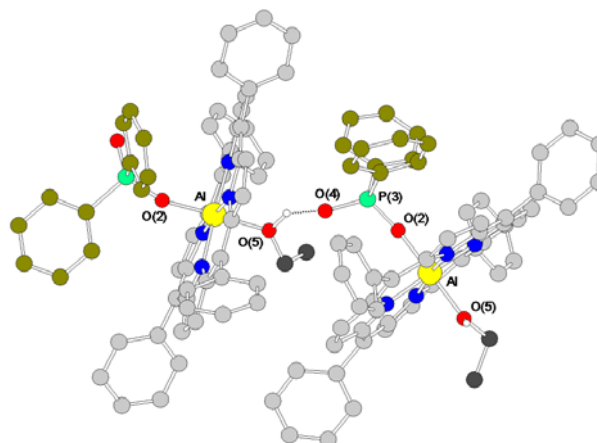


Figure 2. X-ray structure of [1.EtOH]_n supramolecular chains. Light gray, C porphyrin; dark gray, C ethanol; dark green, C Ph on P(3). Hydrogen atoms, except (O5)H, are omitted for clarity.

Crystals of the complex 1 were obtained by slow diffusion in pentane of a solution of 1 in a mixture of CHCl₃/EtOH in a 98:2 ratio (no crystals were obtained without EtOH). This is the first X-ray structure of a Al^{III}TPP complex axially bonded to a phosphinate anion.⁹ Crystallographic analysis showed that the complex 1 and ethanol molecules self-assemble to form polymeric *1-D* supramolecular chains [1.EtOH]_n, where subunits are linked through coordination and hydrogen bonds (Figure 2). The porphyrin is not flat but has a slight saddle shape (the C5-Al-C15 and C10-Al-C20 angles are close to 172°). The coordination geometry around the Al^{III} is slightly distorted octahedral and is coordinated in the equatorial

positions by the four nitrogen donors ($d_{\text{Al-N}} \sim 2.00 \text{ \AA}$). One axial position of the Al^{III} is occupied by the oxygen of the phosphinate ligand which forms a bent interaction with the metal ($\text{Al-O(2)-P(3)} = 161.5^\circ$). The second axial position of the Al^{III} is occupied by the oxygen of one ethanol molecule. The Al-O(2) distance is shorter than the Al-O(5) distance (1.86 compared to 1.98 \AA). These distances are closed to those found in the literature.¹⁰ The O(2)-Al-O(5) linkage is almost linear ($\sim 179^\circ$). The ethanol link the building blocks **1** together through hydrogen bonds with the P=O functions ($\text{O(4)-O(5)} = 2.50 \text{ \AA}$) and coordination bonds with the Al^{III} (O(5)-Al). The distance between two Al^{III} atoms is 7.75 \AA . Two views of one chain are represented in the figure 3a. All the ethyl groups of the ethanol molecules (dark gray) are situated on the same side of the chain. Hydrophobic interactions are responsible of the packing and the chains are running parallel to the c axis (Figure 3b).

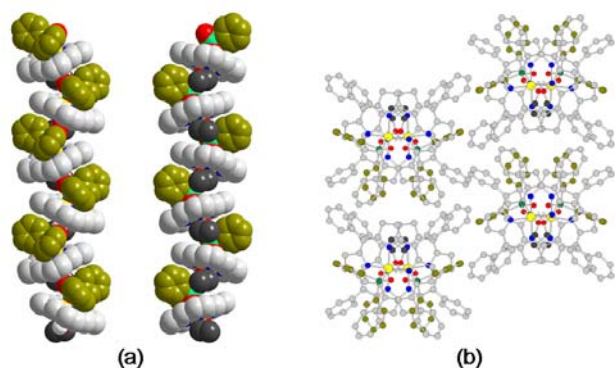


Figure 3. (a) Two different views in CPK of one $[\mathbf{1}.\text{EtOH}]_\infty$ supramolecular chain. Light gray, C porphyrin; dark gray, C ethanol; dark green, C Ph on the phosphorus atom. (Ph *meso* and hydrogen atoms, except (O5)H, omitted for clarity). (b) View of the crystal packing along the c axis (hydrogen atoms, except (O5)H, are omitted for clarity).

The complex **1** is air and moisture stable and no dissociation of the P-O-Al bond is observed in solution even if a large excess of a coordinating solvent is added. The ^1H NMR spectrum of the complex **1** in a mixture of $\text{C}_6\text{D}_6/\text{CD}_3\text{OD}$ in a 9:1 ratio shows the axially bound phosphinate anion (Figure 4a). The characteristic signals of the TPP ligand are displayed. The three signals at 6.71, 6.54 and 4.88 ppm are due to the protons of the phenyl rings on the phosphorus atom, respectively H_{para} , H_{meta} and H_{ortho} strongly shielded by the porphyrinic ring current. These chemical shifts are close to those of a benzoate bound to a six-coordinate $\text{Al}^{\text{III}}\text{TPP}$.⁸ In our case, the second axial ligand is a molecule of CD_3OD . Significant broad signals are observed by ^1H NMR of the complex **1** in benzene- d_6 (without CD_3OD) at 25°C (Figure 4b). The protons resonate at higher fields showing the close proximity between the porphyrins and suggesting the formation of self-assembled species containing six-coordinate Al^{III} . When the sample is heated at 75°C , sharp signals are displayed corresponding to the complex **1** with a five-coordinate Al^{III} (the H_{ortho} resonate at 5.20 ppm, see the Supporting Information). The addition of a coordinating solvent such as CD_3OD to the NMR sample leads to sharper signals corresponding to the monomeric

complex **1**. CD_3OD (Figure 4a). It demonstrates that P=O-Al interactions are involved in the self-assembled structures ($\pi-\pi$ stacking interactions are not responsible for the self-assembly process).¹¹ This process is reversible: when solvents are evaporated and fresh benzene- d_6 is added, broad signals are displayed again. Sanders and co. showed that a six-coordinate Al^{III} -porphyrin complex was never detected with benzoates as the axial ligand (except if a coordinating molecule is added).⁸ With phosphinates as the axial ligand, six-coordinate $\text{Al}^{\text{III}}\text{TPP}$ are observed in nonpolar solvents. The reciprocal recognition between the donor site P=O and the acceptor site Al^{III} leads to self-assembled structures with P=O-Al interactions.

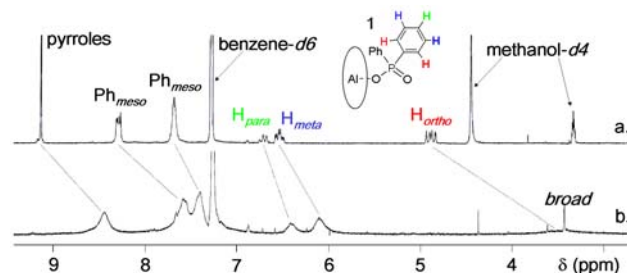


Figure 4. ^1H NMR spectra of **1** (200 MHz, 300 K, 20 mM). (a) in C_6D_6 + 10% CD_3OD . (b) in C_6D_6 .

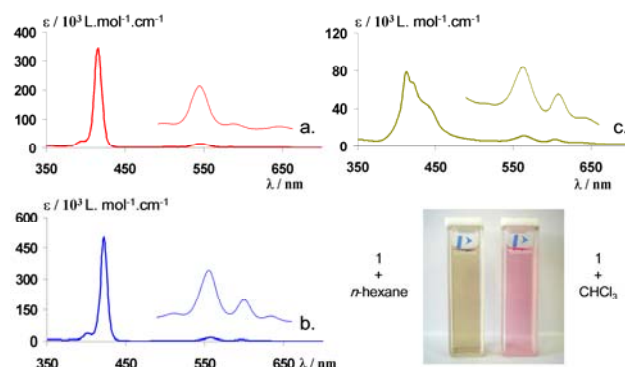


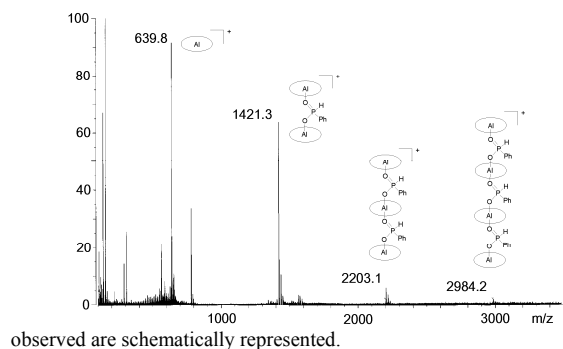
Figure 5. UV-visible absorption spectra of **1** in CHCl_3 (a), CHCl_3 + 10% CH_3OH (b) and n -hexane (c). Picture inset: quartz cells with self-assembled complex **1** in n -hexane (left) and not self-assembled complex **1** in CHCl_3 (right) at 24 μM (quartz cells of 1 cm path).

The self-assembly process can also be observed by UV-visible spectroscopy. A solvatochromic behavior induced by self-assembly of the complex **1** is observed. The UV-visible absorption spectrum of **1** in chloroform (Figure 5a) shows the typical absorption bands of $\text{Al}^{\text{III}}\text{TPP}$ derivatives. According to previous studies,¹² the Al^{III} is square pyramidal ($4\text{N}_{\text{TPP}} + 1\text{O}_{\text{phosphinate}}$). No self-assembly occurs at a concentration around 10^{-5} M in chloroform. The sharp Soret band and one intense Q band appear, respectively, at 415 nm and 546 nm. When an Al^{III} ligating entity such as methanol is added, the Soret band and the intense Q band are bathochromically shifted and appear, respectively, at 422 and 558 nm (Figure 5b). A second intense Q band appears at 597 nm. This spectral evolution shows that the Al^{III} is octahedral ($4\text{N}_{\text{TPP}} + 1\text{O}_{\text{phosphinate}} + 1\text{O}_{\text{CH}_3\text{OH}}$). The recognition of the complementary polar functional parts P=O and Al^{III} is effective in nonpolar solvents. When a

solution of **1** in chloroform is diluted by adding *n*-hexane, a change of color from pink to brown is observed (Figure 5, picture inset). Dramatic changes in the UV-visible absorption spectrum result from the self-assembly process (Figure 5c). The Q bands are red-shifted and show that the Al^{III} is octahedral (two intense Q-bands at 564 and 604 nm). The Soret band is less intense and appears split and broad. This spectral evolution arises from the excitonic coupling between the neighboring chromophores within the self-assembled structures.¹³ As expected, the addition of a coordinating solvent such as methanol to a solution of the complex **1** in *n*-hexane leads to complete disassembly.¹¹

Spectroscopic analyses tend to show that the complex **1** is able to self-assemble alone in solution by P=O---Al interactions, but there is no spectroscopic evidence of the formation of oligomeric species more than the dimer. It was possible to observe by FAB⁺ mass spectrometry a weak signal at *m/z* = 1715 corresponding to the dimer [**1**]₂.¹⁴ The exact association constant *K*_{assoc} for this system could not be extracted, but *K*_{assoc} for the P=O---Al interaction must be greater than 10⁵ M⁻¹.¹⁵ Bulky groups on the porphyrin and/or the phosphorus atom prevent the formation of stable P=O---Al interactions. Thus, more stable self-assembled structures are obtained when the size of these groups is decreased. The complex **2** has only one phenyl ring on the phosphorus atom. This structural change decreases dramatically its solubility. This compound is only soluble in the presence of a coordinating molecule. It can be explained by the formation of stable oligomeric structures with P=O---Al interactions which are disassembled by methanol. FAB⁺ mass spectrometry provided evidence for oligomeric structures (Figure 6). Signals up to the tetramer fragment (*m/z* = 2984.2) are detected, showing the stability of the -[Al-O-P=O]- backbone toward FAB⁺ mass spectrometry conditions.

Figure 6. FAB⁺ mass spectrum of the complex **2**. The different fragments



In summary, aluminum (III) *meso*-tetraphenyl porphyrin complexes axially bonded to phosphinate anions have been prepared and characterized. These compounds are versatile building blocks to obtain *1-D* self-assembled structures. According to the solvent and the size of the anion, two self-assembly pathways are possible to give supramolecular chains like [**1**+ethanol]_∞ or self-assembled structures with P=O---Al interactions.

Acknowledgment. We are grateful to the Centre National de la Recherche Scientifique and the Ministère de l'Éducation Nationale de France for financial support.

Supporting information available: General experimental details, full synthetic procedure and characterization of the compounds **1** and **2**, estimation of the *K*_{assoc} for **1**, crystallographic data for [**1**+ethanol]_∞.

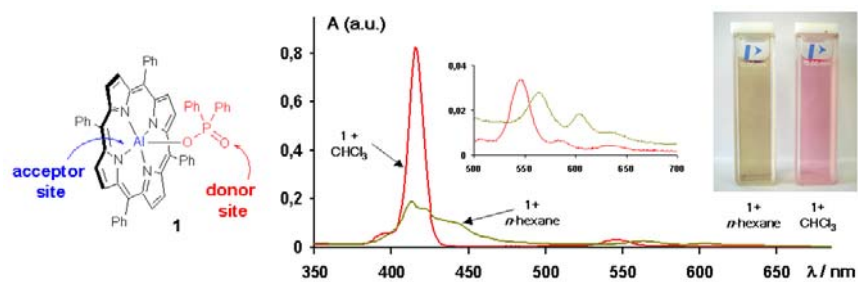
* To whom correspondence should be addressed. E-mail: sricheter@univ-montp2.fr.

† Laboratoire de Chimie Moléculaire et Organisation du Solide.

‡ Institut Européen des Membranes.

- (1) Lehn, J. -M. *Supramolecular Chemistry. Concepts and Perspectives*, VCH, Weinheim, 1995.
- (2) (a) Bystrova, M. I.; Mal'gosheva, I. N.; Krasnovskii, A. A. *Mol. Biol.* **1979**, *13*, 582-594. (b) Balaban, T. S.; Holzwarth, A. R.; Schaffner, K.; Boender, G. -J.; de Groot, J. J. M. *Biochemistry* **1995**, *34*, 15259-15266.
- (3) (a) For examples, see: Chambron, J. -C.; Heitz, V.; Sauvage, J. -P. In *The Porphyrin Handbook*; Kadish, K. M., Smith, K. M., Guillard, R., Eds.; Academic Press: Orlando, 2000; Vol. 6, Chapter 40, pp 1-42. (b) Goldberg, I. *Cryst. Eng. Comm.* **2002**, *4*, 109-116. (c) Drain, C. M.; Russell, K. C.; Lehn, J. -M. *Chem. Commun.* **1996**, 337-338. (d) Drain, C. M.; Nifiatis, F.; Vasenko, A.; Batteas, J. D. *Angew. Chem., Int. Ed.* **1998**, *37*, 2344-2347. (e) Wang, Z.; Medforth, C. J.; Shelnutz, J. A. *J. Am. Chem. Soc.* **2001**, *126*, 15954-15955. (f) Balaban, T. S.; Goddard, R.; Linke-Schaetzel, M.; Lehn, J. -M. *J. Am. Chem. Soc.* **2003**, *125*, 4233-4239. (g) Balaban, T. S.; Bhise, A. D.; Fischer, M.; Linke-Schaetzel, M.; Roussel, C.; Vanthuyne, N. *Angew. Chem., Int. Ed.* **2003**, *42*, 2140-2144. (h) Balaban, T. S.; Linke-Schaetzel, M.; Bhise, A. D.; Vanthuyne, N.; Roussel, C. *Eur. J. Org. Chem.* **2004**, 3919-3930.
- (4) (a) Michelsen, U.; Hunter, C. A. *Angew. Chem., Int. Ed.* **2000**, *39*, 764-767. (b) Haycock, R. A.; Hunter, C. A.; James, D. A.; Michelsen, U.; Sutton, L. R. *Org. Lett.* **2000**, *2*, 2435-2438. (c) Tsuda, A.; Nakamura, T.; Sakamoto, S.; Yamaguchi, K.; Osuka, A. *Angew. Chem., Int. Ed.* **2002**, *41*, 2817-2821. (d) Twyman, L. J.; King, A. S. H. *Chem. Commun.* **2002**, 910-911. (e) Furutsu, D.; Satake, A.; Kobuke, Y. *Inorg. Chem.* **2005**, *44*, 4460-4462. (f) Takahashi, R.; Kobuke, Y. *J. Org. Chem.* **2005**, *70*, 2745-2753.
- (5) (a) For examples, see: Sanders, J. K. M.; Bampos, N.; Clyde-Watson, Z.; Darling, S. L.; Hawley, J. C.; Kim, H. -J.; Mak, C. C.; Webb, S. J. In *The Porphyrin Handbook*; Kadish, K. M., Smith, K. M., Guillard, R., Eds.; Academic Press: New York, 2000; Vol. 3, pp 1-48. (b) Stulz, E.; Scott, S. M.; Ng, Y. -F.; Bond, A. D.; Teat, S. J.; Darling, S. L.; Feeder, N.; Sanders, J. K. M. *Inorg. Chem.* **2003**, *42*, 6564-6574.
- (6) (a) Sugimoto, H.; Kimura, T.; Inoue, S. *J. Am. Chem. Soc.* **1999**, *121*, 2325-2326. (b) Konishi, K.; Aida, T.; Inoue, S. *J. Org. Chem.* **1990**, *55*, 816-820. (c) Hirai, Y.; Aida, T.; Inoue, S. *J. Am. Chem. Soc.* **1989**, *111*, 3062-3063.
- (7) Kumar, P. P.; Maiya, B. G. *New J. Chem.* **2003**, *27*, 619-625.
- (8) Davidson, G. J. E.; Tong, L. H.; Raithby, P. R.; Sanders, J. K. M. *Chem. Commun.* **2006**, 3087-3089.
- (9) Crystal data for **1.EtOH** (C₅₈H₄₄N₄O₃PAI): *M*_w = 902.97, monoclinic, space group *P* 1 2₁/c 1 (No. 14), *a* = 12.8820(4) Å, *b* = 26.0619(7) Å, *c* = 15.0590(4) Å, β = 111.15(2)°, *V* = 4715.19(70) Å³, *Z* = 4, *d*_{calcd} = 1.268 g·cm⁻³, *T* = 173 K, λ(Mo Kα) = 0.71073 Å, μ(Mo Kα) = 0.128 mm⁻¹, 87791 reflections collected, 15579 unique reflections, R₁_{obsd} for [*I*>2σ(*I*)] = 0.1037, wR₂_{all}(*F*²) = 0.1017 for all data, GOF on *F*² = 1.301, trans. coeff. = 0.980-0.990.
- (10) Mitra, A.; Parkin, S.; Atwood, D. A. *Inorg. Chem.* **2006**, *45*, 3970-3975.
- (11) (a) Gardner, M.; Guerin, A. J.; Hunter, C. A.; Michelsen, U.; Rotger, C. *New J. Chem.* **1999**, 309-316. (b) Ma, C. T. L.; MacLachlan, M. J. *Angew. Chem., Int. Ed.* **2005**, *44*, 4178-4182.
- (12) Kaisu, Y.; Mitsu, N.; Tsuji, K.; Kaneko, Y.; Kobayashi, H. *Bull. Chem. Soc. Jpn.* **1985**, *58*, 103-108.
- (13) Gouterman, M.; Holten, D.; Lieberman, E. *Chem. Phys.* **1977**, *25*, 139-153.
- (14) MALDI-TOF mass spectrometry was not so efficient to detect oligomeric fragments because disassembly processes should occur during the laser photoexcitation of the porphyrin. See ref. 3f.
- (15) The *K*_{assoc} was estimated on the assumption that the concentration of the free complex **1** is <20% of the total concentration 24 μM. See the Supporting Information.

Aluminum(III) *meso*-tetraphenylporphyrins axially bonded to phosphinate anions have been synthesized and structurally characterized. According to the size of the phosphinate anion and the solvent used, these compounds are able to self-assemble in two different manners as it is demonstrated by X-ray analysis, FAB⁺ mass spectrometry and NMR and UV-visible spectroscopy.



self-assembly of 1 in nonpolar solvents