



HAL
open science

Accretion-ejection instability and QPO in black hole binaries I. Observations

J. Rodriguez, P. Varnière, Michel Tagger, Ph. Durouchoux

► **To cite this version:**

J. Rodriguez, P. Varnière, Michel Tagger, Ph. Durouchoux. Accretion-ejection instability and QPO in black hole binaries I. Observations. *Astronomy and Astrophysics - A&A*, 2002, 387, pp.487-496. 10.1051/0004-6361:20000524 . hal-00176021

HAL Id: hal-00176021

<https://hal.science/hal-00176021>

Submitted on 27 Jan 2021

HAL is a multi-disciplinary open access archive for the deposit and dissemination of scientific research documents, whether they are published or not. The documents may come from teaching and research institutions in France or abroad, or from public or private research centers.

L'archive ouverte pluridisciplinaire **HAL**, est destinée au dépôt et à la diffusion de documents scientifiques de niveau recherche, publiés ou non, émanant des établissements d'enseignement et de recherche français ou étrangers, des laboratoires publics ou privés.

Accretion-ejection instability and QPO in black hole binaries

I. Observations

J. Rodriguez, P. Varnière, M. Tagger, and Ph. Durouchoux

Service d'Astrophysique (CNRS URA 2052), CEA Saclay, 91191 Gif-sur-Yvette, France

Received 23 May 2000 / Accepted 25 February 2002

Abstract. This is the first of two papers in which we address the physics of the low-frequency Quasi-Periodic Oscillation (QPO) of X-ray binaries, in particular those hosting a black hole. We discuss and repeat the recent analysis and spectral modelling of the micro-quasar GRO J1655-40 by Sobczak et al. (2000, hereafter SMR), and compare it with GRS 1915+105; this leads us to confirm and analyze in more detail the different behavior noted by SMR, between GRO J1655-40 and other sources, when comparing the correlation between the QPO frequency and the disk inner radius. In a companion paper (Varnière et al. 2002, hereafter Paper II) we will show that these opposite behaviors can be explained in the context of the Accretion-Ejection Instability recently presented by Tagger & Pellat (1999). We thus propose that the difference between GRO J1655-40 and other sources comes from the fact that in the former, observed in a very high state, the disk inner radius always stays close to the Last Stable Orbit. In the course of this analysis, we also indicate interesting differences between the source properties, when the spectral fits give an anomalously low inner disk radius. This might indicate the presence of a spiral shock or a hot point in the disk.

Key words. accretion, accretion disks – X-rays: binaries – stars: individual: GRS 1915+105, GRO J1655-40

1. Introduction

The observation of Quasi-Periodic Oscillations (QPOs) in X-ray binaries is widely considered as a key to understanding the physics of the inner region of accretion disks around compact objects. Although the origin of the QPOs is still debated, it is considered that such models should yield information of prime importance on the physics and the geometry of the accretion process, in these and other accreting sources. In particular, in the last years, many observational results have pointed to the importance of a low-frequency QPO, found in binaries hosting neutron stars or black holes. A recent result, reported by Psaltis et al. (1999), shows that in these sources its frequency is correlated with that of a higher-frequency QPO (in neutron-star binaries, this is the lower of the pair of so-called “kHz QPOs”), believed to be close to the rotation frequency at the inner edge of the disk. Thus the frequency of this QPO ranges from $\lesssim 1$ to a few tens of Hz in black-hole and neutron-star binaries. It has been intensively studied, in particular, in the micro-quasar GRS 1915+105, where its occurrence in the low-hard state is so frequent that it has been dubbed the “ubiquitous” QPO (Swank et al. 1997; Markwardt et al. 1999, hereafter SM97 for both these references). These studies have allowed SM97

and Munro et al. (1999) to find a number of correlations, showing that the QPO probably has its origin in the disk, although it affects more strongly the coronal emission.

One of these correlations involves the QPO frequency and the color radius of the disk r_{col} , considered as a measure of the disk inner radius r_{int} . Even though this is not a very tight correlation, it would mean that the QPO frequency would most often correspond to a Keplerian rotation frequency in the disk, at a radius of a few times (typically ~ 2 to ~ 5) r_{int} ; this is consistent with the correlation of Psaltis et al. (1999), where the high-frequency to low-frequency ratio is about 11, assuming, as usually believed, that the high-frequency QPO is close to the Keplerian frequency at the inner edge of the disk.

However these observational results must be taken with extreme caution: r_{col} is obtained from a fit of the source spectrum with a model, and the results of the fit raise many questions:

1. The model spectrum consists of a multi-color black-body part, thought to originate in an optically thick disk, and a power-law tail at higher energies, considered as inverse Compton emission from a hot corona which might lie either above the disk, or in the region between the disk and the central object. We will call them, for simplicity, the disk and coronal emissions respectively. However in the low-hard state where

Send offprint requests to: J. Rodriguez,
e-mail: rodrigue@discovery.saclay.cea.fr

the low-frequency QPO is most often seen, the coronal emission often dominates the disk one, even at low energies. In this case the extraction of the disk parameters becomes difficult.

2. Indeed the fits often give values of r_{col} which must clearly be ruled out, since they are extremely low and sometimes even within the Schwarzschild radius.
3. In a recent paper Merloni et al. (2000, hereafter MFR) have shown that other effects, associated with the vertical structure of the disk, could strongly affect the determination of the disk parameters. Using synthetic spectra to test the fitting algorithm, they find that the disk black body model underestimates the radius by a factor which may be quite large, when the coronal emission dominates the disk emission. This makes the extraction of disk parameters difficult, since we have little information on the conditions causing this effect.
4. Even when the disk emission is strong enough to allow a reliable fit, the model spectrum contains assumptions which may affect the outcome. In particular the disk is assumed to be axisymmetric with a temperature varying as $T^{-3/4}$, following the standard α -disk model. These are strong assumptions which may affect the validity of the fit parameters. However, since the RXTE/PCA data starts above 2 keV, the observations are not very sensitive to the whole structure of the disk itself. On the other hand, various corrections (e.g. due to electron scattering) must be applied. One can only expect that, when the assumptions are not too far from reality, there is a proportionality between the color radius r_{col} and the disk inner radius r_{int} .

Points (1–3) above thus lead us to take with extreme caution, or rule out, determinations of the disk parameters when the ratio of the disk black body flux (determined from the fit) is less than about half of the total flux. We will see below that indeed, among the data points we obtain for GRO J1655-40, *all* the ones giving anomalously low values of r_{col} are excluded if this criterion is applied. On the other hand point (4) above is much more difficult to address, as long as we have no observational tests of the disk structure. Determining the nature of the QPO would be very likely to shed light on this, but this also depends on our knowledge of the disk parameters.

Recently SMR have analyzed observations of the micro-quasar GRO J1655-40, and found that in this source the low-frequency QPO differed markedly from other sources, in particular XTE J1550-564: the color radius was found to be quite small (down to a few kms), and to increase with the QPO frequency. On the contrary in XTE J1550-564, and in most observations of other sources, the color radius and the QPO frequency are inversely correlated.

In this paper our goal is to check this reversed correlation which (as will be seen in Paper II) might be consistent with the explanation of this QPO by the Accretion-Ejection Instability (AEI) recently presented in Tagger & Pellat (1999). It would be due to relativistic effects,

when the disk inner radius approaches the Last Stable Orbit. Thus we begin in Sect. 2.1 by reconsidering the data points from GRO J1655-40 presented by SMR, repeating the whole data reduction and fitting process; we discuss them in regard to the criterion of MFR, which we take as a guide for the validity of the fitting procedure. This results in excluding all the points at anomalously low radius values, and retaining points only in a limited radial range. We then turn to the other source studied by SMR, XTE J1550-564, but the criterion of MFR leads us to exclude almost the whole data set: the source was at the time of the study in an extremely bright high soft state/ very high outburst state. We thus chose to study a different source, GRS 1915+105, because its high variability and the large number of observations including the low frequency QPO suggested that we could explore the radius-frequency correlation over a much broader range of values for r_{col} . In particular the observations of SM97 showed that, during the much studied 30 min cycle of that source, both ν_{QPO} (the QPO frequency) and r_{col} vary by a large factor, and apparently in opposite directions. The choice of this particular observation was driven also by the existence of a multiwavelength campaign (Mirabel et al. 1998), that could allow a richer discussion between QPOs, disk instabilities and ejections of plasma, since several authors have now linked the changes of luminosity to disk instabilities (e.g. Feroci et al. 1999; Fender et al. 2002, and references therein). We have thus analyzed two such cycles, essentially repeating the analysis of SM97 and turning our attention to the frequency-radius correlation.

We will present the observations of GRO J1655-40 and GRS 1915+105 in Sects. 2.1 and 2.2 respectively. We will then in Sect. 2.3 discuss and compare the results, which will be then be confronted with a theoretical model in Paper II. We will also discuss the different behaviors observed when the disk color radius takes anomalously small values, leading to a discussion of disk properties and to a possible explanation for these very small values.

2. Data reduction and analysis

2.1. GRO J1655–40

GRO J1655-40 (Nova Scorpii 1994) was discovered in 1994 by the Burst and Transient Source Experiment (BATSE) (Wilson et al. 1994). Its optical counterpart was discovered in 1995 (Bailyn et al. 1995), and the orbital parameters gave a primary mass of $7.02 \pm 0.22 M_{\odot}$ (Orosz & Bailyn 1997; van der Hooft et al. 1998), placing it well above the $3 M_{\odot}$ maximum mass for neutron stars. Its distance is estimated at 3.2 ± 0.2 kpc (Hjellming & Rupen 1995), with an inclination angle $\sim 69.5^{\circ}$. GRO J1655-40 is also known as one of the few galactic microquasars, since radio observations show two extended radio lobes with superluminal motions (Hjellming & Rupen 1995). In order to be able to compare directly the results on the disk color radius with the ones presented below for GRS 1915+105, we have re-done the data reduction and analysis of the

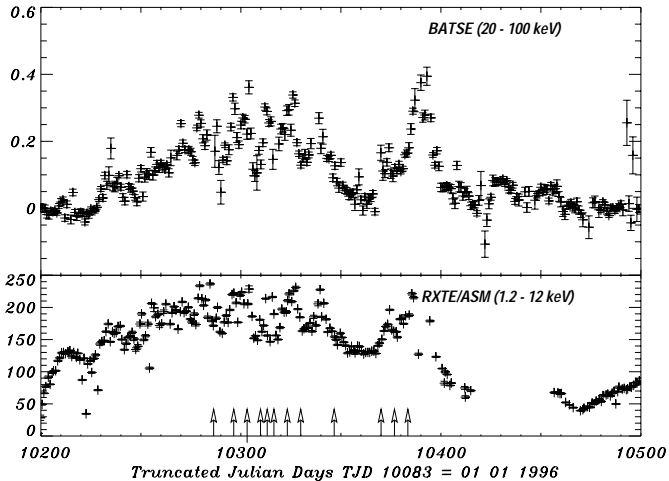


Fig. 1. GRO J1655-40 light curves during 1996, obtained at high energies with BATSE (20–100 keV) and at lower ones with the RXTE All Sky Monitor (1.2–12 keV). Arrows show the dates where low-frequency QPO were observed.

series of twelve public observations (AO1) of GRO J1655-40 during its 1996 outburst (see Fig. 1), already presented by SMR, when QPO were observed. Figure 1 shows the BATSE and RXTE ASM light curves during that period, and the dates where QPO were observed. Table 1 gives the corresponding disk parameters.

For our analysis the RXTE spectra were obtained using only the Proportional Counter Array (hereafter PCA). We used the standard 2 data only when the offset pointing was less than 0.02° and the elevation angle above 10° ; in almost all cases all the PCU were “on” during the observation, but we chose to use only the spectra extracted from PCU 0 and 1 separately, and then fit them together in XSPEC. Given the high flux of the source this allows us to get sufficient statistics while limiting the effects associated with the various PCUs. The data reduction/extraction was made following the standard RXTE data reduction. In order to compare precisely with the results of SMR, we have used FTOOLS package 4.1, but checked that package 5.0 gave nearly identical results.

We first generated spectra using all the PCU layers, which gives a higher count rate, and then extracted spectra only from the top layer; the fits parameters deduced with the two methods presented no significant differences, and since there was, for this source, no particular need to get the highest count rate (the source was sufficiently bright, and the exposure sufficiently long that the data had small statistical errors), the results presented here are obtained with the later method. The background was estimated using the PCABACKEST tool version 2.1, and we chose to ignore channel energies below 2.5 keV, and above 20 keV, in order to use the best detector energy band (choosing this band, we avoided the uncertainties due to the response matrix at lower and higher energies, and the problems due to background subtraction near 25 keV – see also SMR); we then added a systematic error of 1.5% on each data point. The response matrices were generated

using the PCARSP tool version 2.38, and we deadtime correct the spectra following the RXTE cook book method. The spectral fits were obtained using XSPEC version 10., using the multicolor disk blackbody model with a power law tail at higher energy, and a hydrogen column absorption fixed at $N_{\text{H}} = 0.9 \times 10^{22} \text{ cm}^{-2}$ as found with ASCA (Zhang et al. 1997a). We have found that no other contributions to the spectrum (e.g. iron line) needed to be introduced in the fit, giving results consistent with those of SMR while reducing the number of fit parameters. On the other hand, since there is little uncertainty on the QPO centroid frequencies, we have not re-done the power spectra analysis, and we use here the frequency values given by SMR.

Table 1 shows the results of our fits. Column 7 shows the ratio (Disk black body flux/total flux) which, according to MFR, we will first use to discriminate between two different spectral states of the source. For our purpose, the total flux is obtained by extrapolating the spectra to 50 keV. Table 1 shows that the observations clearly come in two categories: one where the ratio Disk black body flux/total flux is lower than .5, so that according to the criterion of MFR the disk radius value should be considered as unreliable, and where indeed the radius is *always* unrealistically low; and one where the ratio is higher than .5 and where the obtained radius appears to be more trustworthy: it lies in the range we expect for a disk around a black hole, and gives more consistent values.

Figure 2 shows the spectra for the first two observations, typical of these two behaviors: on July 25 the disk emission dominates at low energy, allowing a satisfying spectral fit. On August 1 the coronal emission dominates at all energies, and results in an unreliable fit. Figure 3 is the resulting plot, for the data points we retain, of the QPO centroid frequency versus the disk color radius, where r_{col} is given in km, with $R^* = ((r_{\text{col}}/\text{km})/(D/10 \text{ kpc}))^2 \cos \theta$ R^* being the XSPEC dimensionless parameter. Comparing with Fig. 2 of SMR, we note that the points we exclude correspond to higher temperatures and lower disk flux. It is quite remarkable that they are also the observations where a higher frequency QPO is simultaneously observed. This might confirm that indeed the disk is in a different state in the observations we retain and the ones we reject, but we will not attempt to explore an explanation, which would clearly require reaching a much better understanding of the disk behavior than our present one – although in our discussion we will contrast this with the behavior of GRS 1915+105. On the other hand, with the data points we retain, we confirm the general tendency noted by SMR that, contrary to other sources, the QPO frequency increases with increasing disk radius in GRO J1655-40.

2.2. GRS 1915+105

We thus turn to the microquasar GRS 1915+105. This source has been the object of very frequent observations,

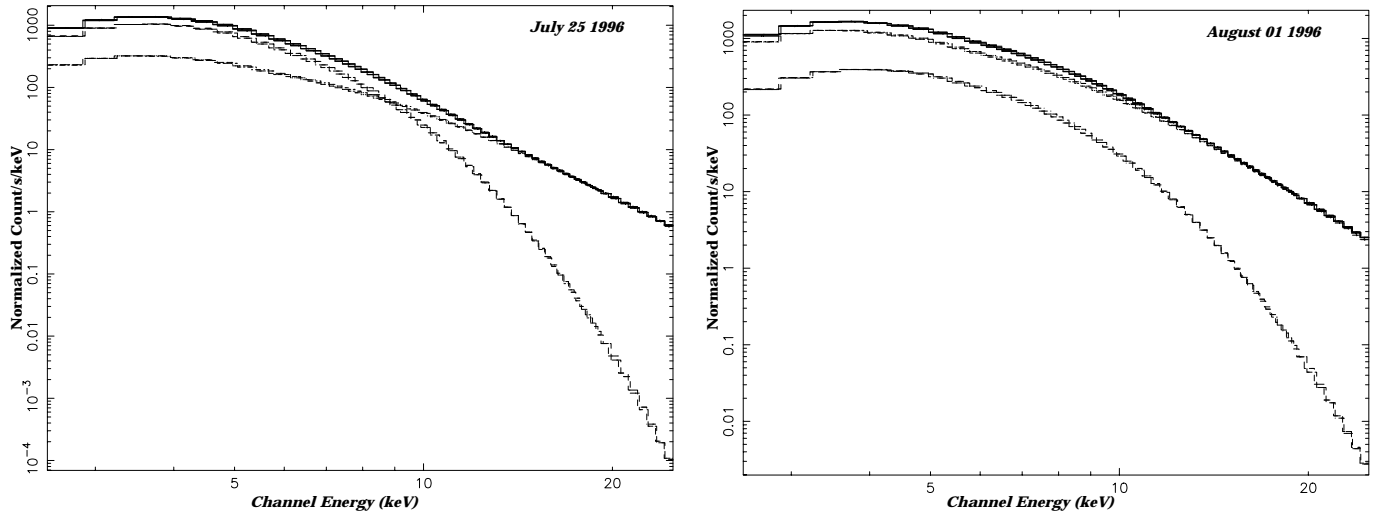


Fig. 2. Spectral fits for the first two observations of GRO J1655-40. On July 27 the black-body part dominates at low energy, allowing a satisfying extraction of disk parameters. On August 1 the coronal part dominates at all energies. The plots show (top curve) a superposition of spectra from PCU's 0 & 1, and (lower curves) the spectral components (multicolor black body and power-law tail) obtained from the fit. The X axis is in keV, and the Y axis is in counts/sec/keV.

Table 1. Best fit parameters for the observations of GRO J1655-40. $R^* = ((R_{\text{col}}/\text{km})/(D/10 \text{ kpc}))^2 \cos \theta$, where θ is the inclination angle. Powerlaw normalization is in unit of photon/cm²/s at 1 keV.

#	Date	T_{col} (keV)	R_{col}	α	Powerlaw	Ratio	χ^2_{ν} (91 d.o.f.)
1	07-25-96	$1.272 \pm 3.6 \times 10^{-3}$	20.62 ± 0.15	2.589 ± 0.022	15.93 ± 0.98	0.64	0.69
2	08-01-96	$1.63 \pm 1.4 \times 10^{-2}$	8.41 ± 0.28	2.49 ± 0.012	50.68 ± 1.78	0.21	0.76
3	08-06-96	$1.53 \pm 8.7 \times 10^{-3}$	10.90 ± 0.23	2.65 ± 0.013	47.93 ± 1.856	0.31	0.7
4	08-15-96	$1.247 \pm 3.7 \times 10^{-3}$	20.69 ± 0.15	2.56 ± 0.024	13.58 ± 0.9	0.65	0.98
5	08-16-96	$1.27 \pm 6.6 \times 10^{-3}$	16.88 ± 0.27	2.59 ± 0.016	34.40 ± 1.578	0.36	0.82
6	08-22-96	$1.25 \pm 5 \times 10^{-3}$	19.10 ± 0.20	2.6 ± 0.017	26.79 ± 1.26	0.47	0.62
7	08-29-96	$1.59 \pm 1.2 \times 10^{-2}$	9.41 ± 0.27	2.54 ± 0.013	50.28 ± 1.86	0.24	0.68
8	09-04-96	$1.25 \pm 4 \times 10^{-3}$	20.56 ± 0.17	2.61 ± 0.02	19.50 ± 1.0	0.59	0.72
9	09-20-96	$1.23 \pm 3.6 \times 10^{-3}$	21.10 ± 0.14	2.49 ± 0.023	9.94 ± 0.65	0.69	0.7
10	10-15-96	$1.29 \pm 3.5 \times 10^{-3}$	20.80 ± 0.13	2.36 ± 0.028	7.098 ± 0.56	0.74	0.6
11	10-22-96	$1.28 \pm 3.5 \times 10^{-3}$	21.13 ± 0.13	2.48 ± 0.025	10.79 ± 0.76	0.70	0.62
12	10-27-96	$1.32 \pm 5 \times 10^{-3}$	17.84 ± 0.21	2.64 ± 0.017	34.31 ± 1.66	0.46	0.7

many of them showing the low-frequency QPO and strong variability. In particular, the very exhaustive analysis of Munro et al. (1999) shows the QPO, in different spectral states, and over a large range of frequencies. Furthermore, SM97 had shown that, during the ~ 30 min cycles of GRS 1915+105, the QPO could be tracked at a varying frequency, together with a color radius varying by a factor ~ 5 , during the “low and hard” part of the cycle. These cycles have been extensively studied; multiwavelength observations (Mirabel et al. 1998; see also Chaty 1998) have shown them to be associated with supra-luminal ejections, and they turn out to be the most frequent type of behavior of that source after the steady ones (Munro et al. 1999; Belloni et al. 2000). Observing the correlated changes of radius and QPO frequency during such events may limit the influence of other effects, such as the mass accretion rate etc., and provide a way to analyze the disk history during such events. This could then complement the

analysis of Belloni et al. (2000), based only on color-color diagrams.

Figure 4 shows three consecutive cycles observed by RXTE on 1997 Sep. 9. The first cycle is the one shown in detail by SM97, while the second cycle was the object of the multiwavelength observations of Mirabel et al. (1998). We have thus chosen to analyze these two consecutive cycles: we repeat the analysis of SM97 for the first cycle, using for the spectral fits and color radius derivation the same procedure as for GRO J1655-40. In order to confirm the results we obtain, we repeat the same analysis for the following cycle. We have also made a rapid analysis showing that the same behavior is observed during the third cycle. We treat only the time interval over which the QPO was observed by SM97, i.e. starting near the transition from the high/soft to the low/hard state, and ending at the intermediate peak halfway through the low state. At that time the QPO disappears, and the

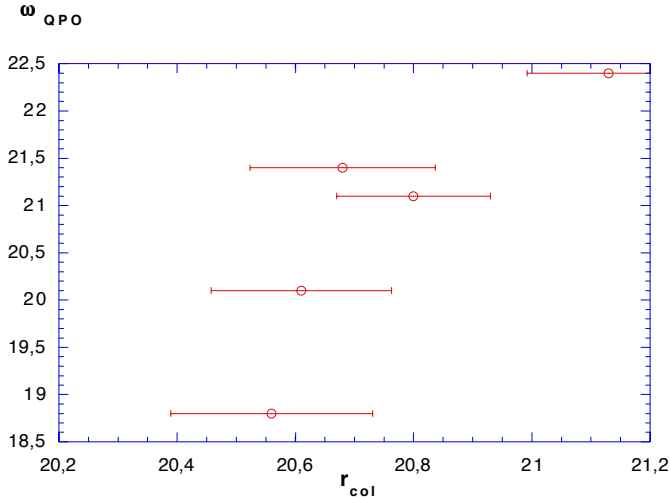


Fig. 3. Plot of ν_{QPO} vs. r_{col} for GRO J1655-40. X axis is in km, Y axis is in Hz.

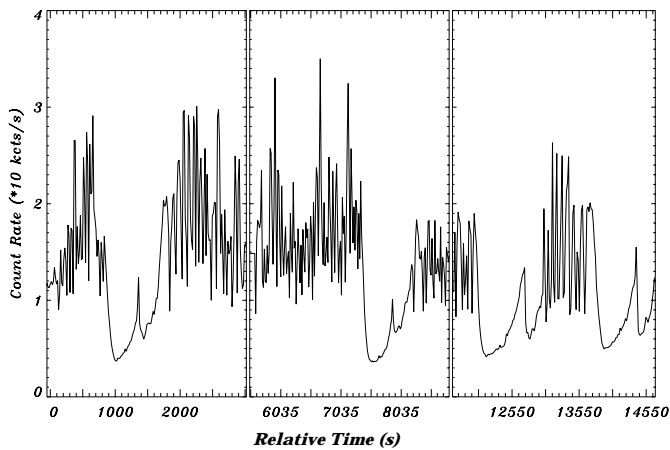


Fig. 4. Lightcurve of GRS 1915+105 during the whole observation of 1997 Sep. 9. X axis is in seconds since the beginning of the observation, Y range is in count/s.

power-law emission decreases dramatically (Mirabel et al. 1998; Chaty 1998).

2.2.1. Spectral analysis

Our goal was to track the variations of the QPO frequency and of the disk color radius, while they vary rather rapidly. We thus reduced the time interval over which the spectral fit and the QPO frequency determination were obtained, to the minimal value compatible with sufficient statistics. We used the standard 2 data accumulated over 16s intervals; although the source occasionally varies on shorter time scales, we have checked that this does not affect the results we present. Due to the poorness of the statistics, we extracted spectra from all available PCU (though only PCU 0 to 3 were “on” during the whole observation), and all layers to get the most possible incoming flux. The spectra, after dead time correction and background correction, were first fitted, as for GRO J1655-40, between 2.5 and 20 keV in XSPEC with the standard model consisting of

a multicolor disk blackbody and a power law tail at higher energy, taking into account a low energy absorption with N_{H} fixed at $5.7 \times 10^{22} \text{ cm}^{-2}$ (Markwardt et al. 1999). The fits were not satisfactory, with an average reduced χ square ~ 2.5 . An analysis of the residual showed a large difference between the spectra and the model used around 6 keV, so that in a second pass we added to the model an iron emission line, with centroid energy found at ~ 5.9 keV.

As for GRO J1655-40, the coronal emission dominates the light curve in some observations. We thus choose the following procedure: we distinguish in the observations a high state and a low state; the latter is defined by the combination of a low temperature ($\lesssim 1$ keV) and a large radius. In this state, the coronal contribution dominates but the correction of MFR (which was derived for high states) should not apply, and the color radius is much larger than at other times, so that we retain these points – which correspond to most of the intervals where the QPO was present. In the high state on the other hand, the radius is much lower and we apply the same criterion as above, retaining only data points where the black-body contribution exceeds half of the total (extrapolated to 50 keV), although we find that in general the radius values for the rejected points are more consistent than in GRO J1655-40. The resulting parameters and classification are presented in Table 2.

2.2.2. Temporal analysis

As we wanted to follow the QPO in the range 2–12 Hz found in SM97, we generate power spectra for the first cycle of Fig. 4 using the binned data, with 8 ms resolution, and the event data with time resolution of $62 \mu\text{s}$ collected during 4 s accumulation, after background correction. Actually the background is so low that retaining it would change the results only by less than $\sim 0.5\%$. From this we generated a dynamical power spectrum of the source, repeating the analysis of SM97. Our result, shown in Fig. 5 (left), confirms theirs: the shaded, U-shaped pattern seen on the lower part of Fig. 5 between times ~ 1000 and ~ 1500 , shows the QPO frequency and its evolution during the cycle. We then repeated this analysis for the second cycle, confirming the generality of this behavior (Fig. 5, right).

The second step was then to track as precisely as possible the QPO frequency, and to correlate it with the disk color radius extracted with the same process used for GRO J1655-40 in Sect. 2.1. We do this using the same time resolution data, but with exposures of 16 s. Power spectra were then generated using POWSPEC version 1, after background subtraction and collimator correction; they were then fitted with a model consisting of a power law with average index ~ -1.5 , plus a Lorentzian whose line center is taken as the QPO centroid frequency; in some cases several Lorentzians were required to fit the 16 s power spectrum; we then chose the one closest to the frequency at which power was strong in power spectra of

Table 2. Spectral and temporal fit parameters for GRS 1915+105, for each interval. $R^* = ((r_{\text{col}}/\text{km})/(D/10 \text{ kpc}))^2 \cos \theta$, where θ is the inclination angle, and R^* is the XSPEC blackbody normalization parameter. Q is a parameter relative to the QPO width with $Q = \nu_{\text{QPO}}/\sigma_{\text{QPO}}$. Spectral states are defined by the values of the disk and the power law parameters; in particular a low state is defined by a low disk temperature ($\lesssim 1$ keV) and a high radius, together with a predominance of the power law component. Based on the criterion of Merloni et al., we reject data points in the high state when the ratio $F_{\text{dbb}}/F_{\text{tot}}$ is $< .5$.

interval (s)	T_{in} (keV)	r_{col} (km)	α	Powerlaw	χ^2_{ν} (40 d.o.f.)	QPO freq. (Hz)	Q	χ^2 (d.o.f.)	$\frac{F_{\text{dbb}}}{F_{\text{tot}}}$	Spectral state
116403340-116403356	1.44	40.76	2.74	47.84	0.63	****		0.44	high state	
116403360-116403376	1.43	33.26	2.79	50.3	0.78	7.16	15.42	23.51 (41)	0.30	high state
116403380-116403396	1.28	33.66	2.79	39.03	0.85	5.60	32.27	31.70 (35)	0.2	high state
116403400-116403416	0.75	130.55	2.63	24.45	1.29	4.81	6.25	35.5 (51)	0.29	low state
116403420-116403436	0.70	141.56	2.68	22.15	1.11	4.31	13.77	16.90 (35)	0.29	low state
116403440-116403456	0.74	136.82	2.52	12.7	0.95	3.95	5.56	24.98 (31)	0.41	low state
116403460-116403476	0.70	151.96	2.57	10.61	1.01	3.16	5.74	20.02 (31)	0.48	low state
116403480-116403496	0.69	162.55	2.42	6.67	0.7	2.73	10.11	18.29 (27)	0.59	low state
116403500-116403516	0.66	201.13	2.34	5.21	0.68	2.77	10.28	19.42 (35)	0.68	low state
116403520-116403536	0.73	144.69	2.43	6.21	0.83	2.56	13.83	19.95 (35)	0.63	low state
116403540-116403556	0.72	143.84	2.53	8.78	0.97	2.90	7.27	43.02 (58)	0.57	low state
116403560-116403576	0.72	159.63	2.34	5.38	1.1	2.96	16.44	31.97 (41)	0.68	low state
116403580-116403596	0.68	177.95	2.56	9.65	1.18	3.11	5.09	33.08 (41)	0.61	low state
116403600-116403616	0.69	169.5	2.54	9.52	1.12	3.28	5.66	45.83 (41)	0.57	low state
116403620-116403636	0.70	164.87	2.64	12.47	1.03	3.54	3.27	24.74 (33)	0.55	low state
116403640-116403656	0.71	166.15	2.52	10.64	0.97	3.56	5.65	28.59 (36)	0.54	low state
116403660-116403656	0.67	178.83	2.72	15.66	1.12	3.98	2.60	23.31 (36)	0.5	low state
116403680-116403696	0.70	163.07	2.72	16.51	1.11	****		0.50	low state	
116403700-116403716	0.77	133.77	2.61	13.64	1.16	4.13	2.77	49.29(45)	0.51	low state
116403720-116403736	0.77	126.64	2.67	17.23	1.05	4.28	42.8	12.09 (36)	0.45	low state
116403740-116403756	0.78	132.98	2.56	13.47	0.74	4.53	11.92	31.24 (40)	0.53	low state
116403760-116403756	0.79	123.95	2.71	20.59	0.96	4.56	26.2	28.75 (40)	0.45	low state
116403780-116403776	0.84	111.20	2.71	22.32	0.94	5.11	4.25	55.48 (46)	0.46	low state
116403800-116403816	0.93	85.46	2.77	27.63	1.16	5.20	31.31	34.05 (40)	0.42	low state
116403820-116403816	0.95	83.65	2.78	28.53	0.92	5.97	26.41	28.88 (40)	0.44	low state
116403840-116403856	1.06	67.07	2.86	38.67	0.82	6.01	59.82	21.31(50)	0.41	high state
116403860-116403876	1.5	33.95	3.68	83.66	0.56	9.13	91.1	33.68 (43)	0.78	high state
116403880-116403896	1.42	36.22	3.58	63.32	0.88	****		0.75	high state	
116403900-116403916	1.41	36.0	3.49	54.8	0.94	****		0.73	high state	
116403920-116403936	1.37	38.52	3.41	42.10	1.10	****		0.77	high state	
116409810-116409826	1.62	39.8	3.17	63.16	0.84	****		0.77	high state	
116409830-116409846	1.53	41.36	2.78	54.84	0.61	12.69	52.87	61.67 (76)	0.5	high state
116409850-116409866	1.45	30.52	2.76	58.22	1.21	7.50	18.21	60.55 (76)	0.22	high state
116409870-116409886	1.33	25.12	2.80	56.47	1.01	6.41	16.76	67.47 (63)	0.11	high state
116409880-116409896	1.05	40.65	2.76	39.36	0.89	5.61	10.21	27.24 (35)	0.13	high state
116409900-116409916	0.78	102.81	2.69	25.76	0.92	4.67	17.85	53.58 (66)	0.25	low state
116409920-116409936	0.76	122.89	2.54	14.74	1.85	****		0.37	low state	
116409940-116409956	0.71	146.78	2.53	9.85	0.97	3.38	5.38	61.44 (76)	0.49	low state
116409960-116409976	0.73	143.84	2.46	7.22	1.29	2.88	5.43	61.97 (66)	0.61	low state
116409980-116409996	0.73	153.16	2.23	4.08	1.44	2.50	5.89	39.44 (66)	0.68	low state
116410000-116410016	0.72	143.49	2.18	6.88	1.00	2.42	13.44	47.21 (66)	0.62	low state
116410020-116410036	0.73	135.01	2.60	8.8	1.03	2.53	19.38	33.01 (35)	0.60	low state
116410040-116410056	0.76	131.98	2.47	6.38	0.98	2.77	5.65	13.51 (35)	0.69	low state
116410060-116410076	0.72	146.71	2.54	7.6	1.07	2.75	6.54	37.04(66)	0.64	low state
116410080-116410096	0.69	152.11	2.66	10.35	1.33	****		0.57	low state	
116410100-116410116	0.68	180.08	2.58	9.29	1.32	3.16	15.5	29.17 (35)	0.54	low state
116410120-116410136	0.71	162.94	2.51	8.50	1.22	3.64	6.61	16.01 (35)	0.62	low state
116410140-116410156	0.74	145.68	2.49	7.55	1.03	.70	31.48	21.74 (35)	0.67	low state
116410160-116410176	0.76	144.19	2.39	5.97	0.74	3.71	3.98	37.41	0.71	low state
116410180-116410196	0.69	168.43	2.69	13.05	1.54	3.77	3.92	28.7 (43)	0.53	low state
116410200-116410216	0.74	146.48	2.60	10.98	0.98	4.03	20.15	29.44 (48)	0.61	low state
116410220-116410236	0.79	126.77	2.56	10.64	1.25	4.30	6.61	32.4 (40)	0.60	low state
116410240-116410256	0.72	154.45	2.75	16.85	1.15	****		0.55	low state	
116410260-116410276	0.76	154.80	2.75	16.84	1.16	4.76	15.88	33.8 (40)	0.55	low state
116410280-116410296	0.81	117.47	2.71	17.19	1.10	5.43	67.5	32.9 (36)	0.55	low state
116410300-116410316	0.85	93.36	2.83	25.13	0.96	5.81	12.91	26.18 (32)	0.52	low state
116410320-116410336	0.90	72.54	2.90	33.45	0.85	5.85	48.75	38.8 (33)	0.39	low state
116410340-116410356	0.92	78.18	2.88	34.91	0.95	7.0	36.84	22.3 (32)	0.30	low state
116410360-116410376	1.21	59.09	2.96	42.68	0.73	9.57	32.7	27.47 (36)	0.34	high state
116410380-116410396	1.43	38.97	3.56	69.14	0.90	****		0.61	high state	

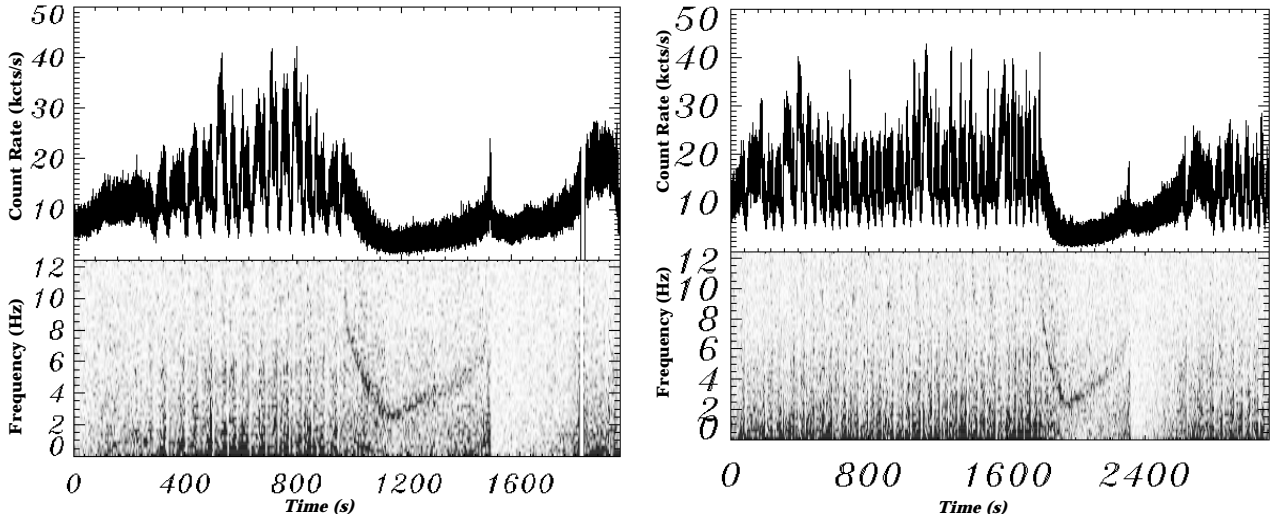


Fig. 5. Dynamical power spectra of GRS 1915+105. The left and right panels correspond respectively to the first and second cycles analyzed. The X axis is in seconds, with the zero corresponding in each case to the beginning of accumulation.

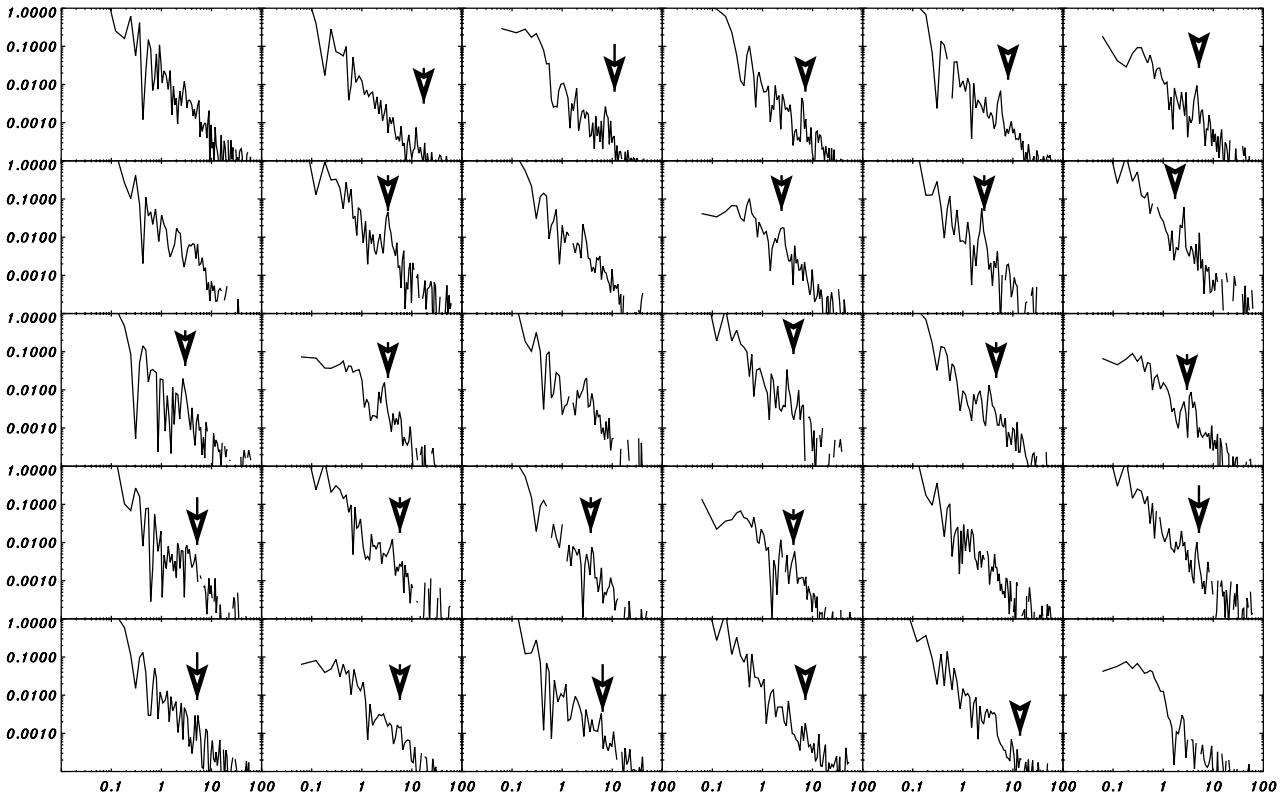


Fig. 6. Power spectra from the second cycle; top left corresponds to the first time interval analyzed in this cycle, and bottom right to the last one. Arrows indicate the position of the QPO found from the fit in each interval, using the dynamical power spectrum (Fig. 5) as a guide to reduce ambiguities. Even with this help, the limited statistics makes it difficult or impossible in some cases to correctly identify the QPO.

neighboring intervals. The trend of the usually strongest feature is easily picked out from the dynamical power spectrum. The choice of this 16 s interval for the temporal analysis is a compromise between conflicting constraints: looking at variations of the disk radius and the QPO centroid frequency on short enough time scales (without averaging on too long time intervals over which the source varies rapidly), having enough flux to get sufficient

statistics on each data point, and getting the QPO frequency with good accuracy.

2.3. Results

The individual power spectra, obtained from interval # 2, are shown in Fig. 6. One sees that, with the time intervals

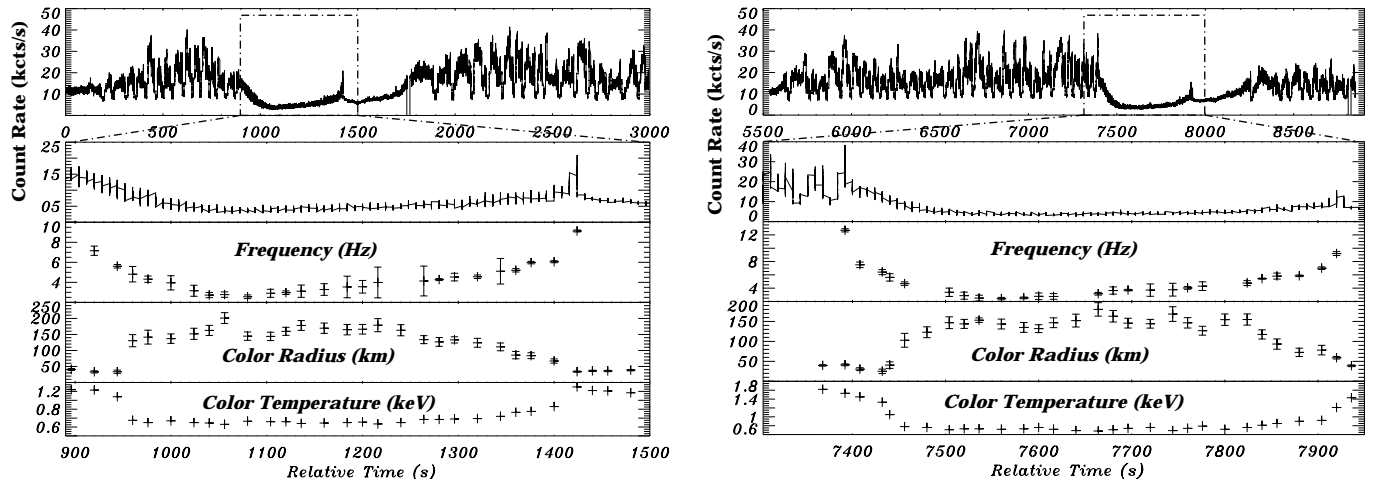


Fig. 7. Plot of the timing evolution of the source flux during the first (left), and second (right) cycle. Subpanel is a temporal zoom on the interesting timing region, with, under the zoomed lightcurve, the fit values of the QPO frequency and the disk radius. Error bars are one σ confidence level.

of 16 s, the QPO can most often be identified and properly found with our fitting procedure. Figure 7 shows superpositions of our results for the disk color radius, the QPO frequency, and the disk temperature during both cycles. Figure 8 shows, for both cycles, the correlation between the QPO frequency and the disk color radius. At large r_{col} the QPO frequency decreases with increasing r_{col} , as discussed by Sobczak et al. (2000) for XTE J1550-564; this is also the general tendency for this correlation, noted by SM97 during one cycle, and more generally by Munro et al. for an ensemble of observations (in particular for similar 30 min cycles).

It would be tempting to interpret the points at lower radius as a turnover, indicating a reversed correlation as seen in GRO J1655-40. However, returning to Fig. 7, one sees that this interpretation must be excluded: the points at lowest radius correspond to the very first manifestations of the QPO. At this time the count rate has not yet started to decrease (this might indicate that the appearance of the QPO is not a consequence of the transition, but possibly its cause), while the QPO frequency decreases monotonously; the color radius first decreases before it starts growing, when the count rate decreases, marking the transition to the low state: this causes the reverse correlation seen in Fig. 8. On the other hand, returning to the data points *in the high state, before the onset of the QPO* one sees that in its variations the color radius consistently shows a fixed lower bound, which probably marks the Last Stable Orbit.

The data points showing an inverse QPO frequency-color radius correlation lie at lower color radius, and at these times the disk temperature decreases, as predicted by MFR. It is thus very likely that, in the spectral fits for these points, the correlation between the color radius and the disk inner radius has become anomalous.

3. Discussion

The possibility, which will be explored in Paper II, of a theoretical explanation has led us to reconsider the contrasting correlations, observed by SMR in GRO J1655-40 and XTE J1550-564, between the disk color radius and the QPO frequency. First guided by the arguments of MFR, we have rejected data points for GRO J1655-40 where the measure of the disk color radius was dubious. The major result of this work is thus that, though we have used the most stringent criterion to select “good” observational data points, the reverse correlation remains: the QPO frequency decreases with decreasing radius in the case of GRO J1655-40.

In the case of XTE J1550-564 the data, for the observations where a QPO is seen, always correspond to a low value of the ratio disk black body/total flux, and may not be reliable according to the criterion of MFR. We have thus turned to GRS 1915+105, because previous work by SM97 and Munro et al. (1999) had shown that, during the frequently observed 30 min cycles of that source, the QPO frequency and disk color radius varied in a correlated manner over a large interval. We have done a complete analysis of two of these cycles, sampling data over the minimal time interval compatible with proper statistics in order to follow as precisely as possible the rapid variations of the source. This does not show a reverse correlation as in GRO J1655-40. Data points obtained at the onset of the QPO would seem to indicate it, but a detailed analysis shows that they are probably incorrect (the spectral fit returning an anomalous value of the disk color radius), so that we have to rule them out.

However the measure of the radius is not an absolute one. It is obtained from a multicolor black-body + power law tail model (plus an iron line when needed), involving a number of hypotheses (such as axisymmetry of the disk emission, and $\sim r^{-3/4}$ radial temperature profiles), and should be submitted to a number of corrections (such

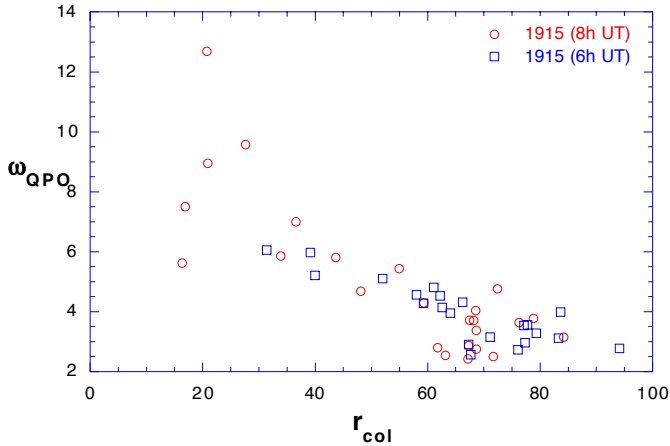


Fig. 8. Plot of ν_{QPO} vs. r_{col} for GRS1915+105 for the first (squares) and second (circles) cycles; error bars shown in Fig. 7 are not displayed here, for the sake of clarity.

as electron diffusion or spectral hardening factor) which we have not tried to include here. Furthermore, MFR have recently shown that effects due to the finite disk thickness could result in a systematic underestimation of the radius, when it becomes small. It is remarkable here that, for the GRS 1915+105 data we have rejected, the spectral fit returns a color temperature which is *lower* than usual, and in particular lower than at times just preceding the onset of the QPO, although the radius decreases: this is compatible with the predictions of MFR, whose mechanism relies in part on the dissipation of part of the accretion energy in the corona rather than the disk (so that the disk cools down).

On the other hand, the data we have rejected for GRO J1655-40 show a very different behavior, also frequently observed in the low and steady state of GRS 1915+105 (Muno et al. 1999): there, the color radius takes extremely small values (sometimes very few kilometers) while the color temperature becomes high. This is not the behavior predicted by MFR, and it is quite unlikely that corrections of this type could explain so strongly anomalous values of the radius: the lowest radius value found by Sobczak et al. (2000) is about 4 times lower than the ones we retain.

However, we note that, if the emissivity is close to unity, the spectral fits actually measure (essentially by the intensity of the black body emission) the *size* of the emitting region: a simplistic view of the multicolor black-body spectrum used in the spectral fits is that the peak of the emission corresponds to the highest temperature in the disk, and the total intensity to the area of the emitting region at that temperature, all this weighted by the temperature distribution in the disk. In GRO J1655-40 we find that the color radius can strongly vary, while the total luminosity remains approximately constant. The most obvious explanation would then be that the total accretion energy dissipated in the disk does not vary much, but that the area of the region where it is dissipated does. This leads us to suggest that the anomalously low mea-

sured radius, *together with a high temperature*, could be interpreted by the presence in the disk of a hot point or a spiral shock, where a substantial fraction of the accretion energy would be dissipated. A spiral shock could result from the non-linear evolution of the AEI, just as the gas forms shocks in the arms of spiral galaxies.

The discussion about the exact ratio $r_{\text{col}}/r_{\text{in}}$, related to the hardening factor by $r_{\text{in}} = r_{\text{col}} \times f^2$, with $f = T_{\text{col}}/T_{\text{eff}}$, being the hardening factor (Ebisawa et al. 1994) is a very complex one. It appears to be dependent on many physical parameters, as shown e.g. by Shimura & Takahara (1995), for a Schwarzschild Black Hole. Although both GRS 1915+105 and GRO J1655-40 are thought to be a Kerr Black Hole, we adopted the best result found in their work, $f = 1.9$, and tentatively estimated the position of the last stable orbit, using $R_{\text{LSO}} \sim \frac{3}{5} \times 0.8 R_{\text{col}} f^2$ (Ebisawa et al. 1994). We chose for each source the lowest “good” value of R_{col} as the one approaching R_{LSO} the most. In the case of GRO J1655-40, this leads to an estimation of $R_{\text{LSO}} \sim 36$ km, inconsistent with a $\sim 7 M_{\odot}$ Schwarzschild Black Hole, where R_{LSO} would be of the order of 63 km. This large difference can be due to two effects. First, the value we adopt is not the exact measure of the last marginally stable orbit, but is really a rough estimation of it (we at least expect it to be closer to the compact object). The second one, which may be the major effect, is that this source, in particular, is expected to be a maximally rotating Black Hole (Strohmayer 2001), where $R_{\text{LSO}} = 17$ km, which is, then, much more consistent (Paper II). The case of GRS 1915+105 can now be explored, since Greiner (2001) has estimated the mass of the Black Hole to be close to $14 M_{\odot}$. The result found ($R_{\text{LSO}} \sim 59$ km), as for GRO J1655-40, is inconsistent with a Schwarzschild Black Hole of $14 M_{\odot}$, but would perfectly fit the case of a maximally rotating Kerr Black Hole of such mass (see Paper II). We also note as an interesting possibility to discuss the mass of the Black Hole the work of di Matteo & Psaltis (1999), which should be enriched by recent measurements of this mass.

But we have to exercise here, extreme caution, since:

- all the calculations in Shimura & Takahara (1995), in particular the determination of the best value of the hardening factor, are made for a Schwarzschild black hole;
- all the calculations, presented in Ebisawa et al. (1994), and Shimura & Takahara (1995), are done for a Shakura & Sunyaev (1973) α -disk, where energy and angular momentum are locally dissipated in the disk under the effect of viscous stresses; whereas in the framework of the AEI, only a small part of the energy warms the disk. Most of it is transported toward the corotation radius (Tagger & Pellat 1999; Paper II; Varnière et al. in prep.);
- the Kerr metric may also affect the relation of Ebisawa et al. (1994), between R_{LSO} , the radius of the Last Stable Orbit, and the measured R_{col} ;

– although in the case of GRO J1655-40 the black hole is thought to be rapidly rotating, this is still unsolved for GRS 1915+105; its temporal behavior does not allow a firm conclusion (Strohmayer 2001) (one has to note, nevertheless, that previous studies give preference to a rapidly rotating black hole (Zhang et al. 1997b).

The relevance of these calculations is thus a matter of debate, and we cannot draw conclusion on the value $f = 1.9$ for the hardening factor, or on the rotation of the black holes. It is however remarkable that the independent method presented in Paper II gives a good range of masses, for both sources, in the cases where both are spinning rapidly.

Our conclusions must be considered as tentative, given the uncertainties on the measure of the disk color radius and its relation with its inner radius, and given the other effects associated with the disk parameters, such as the amplitude and the radial distribution of the magnetic field. On the other hand, a coupled investigation of the low frequency QPO and of the disk spectral properties seems to be a most promising way to probe the physics of the inner accretion disk in black hole binaries.

Acknowledgements. The authors wish to thank many experts of the field for helpful discussions and comments. In particular we thank C. Markwardt (including help with his IDL library site and advice on producing dynamical power spectra), S. Chaty, F. Mirabel, E. Morgan, M. Munro, and R. Remillard. We also thank all the people contributing to the GSFC public database existence and update, and the helpful and constructive comments of both referees.

References

- Bailyn, C. D., Orosz, J. A., Girard, T. M., et al. 1995, *Nature*, 374, 701
- Belloni, T., Klein-Wolt, M., Méndez, M., van der Klis, M., & van Paradijs, J. 2000, *A&A*, 355, 271
- Chaty, S. 1998, Thèse de Doctorat, Université Paris XI, Orsay
- Castro-Tirado, A., Brandt, S., Lund, N., et al. 1994, *ApJS*, 92, 469
- di Matteo, T., & Psaltis, D. 1998, *ApJ*, 526, 101
- Ebisawa, K., Ogawa, M., Aoki, T., et al. 1994, *PASJ*, 46, 375
- Fender, R. P., Rayner, D., Trushkin, S. A., et al. 2002, *MNRAS*, 330, 212
- Feroci, M., Matt, G., Pooley, G., et al. 1999, *A&A*, 351, 985
- Greiner, J., Cuby, J. G., & McCaughrean, M. J. 2001, *Nature*, 414, 522
- Hjellming, R. M., & Rupen, M. P. 1995, *Nature*, 375, 464
- Markwardt, C. B., Swank, J. H., & Taam, R. E. 1999, *ApJ*, 513, 37
- Merloni, A., Fabian, A. C., & Ross, R. R. 2000, *MNRAS*, 313, 193 (MFR)
- Mirabel, I. F., & Rodríguez, L. F. 1994, *Nature*, 371, 46
- Mirabel, I. F., Dhawan, V., Chaty, S., et al. 1998, *A&A*, 330, L9
- Mirabel, I. F., & Rodríguez, L. F. 1999, *ARA&A*, 37, 409
- Morgan, E. H., Remillard, R. A., & Greiner, J. 1997, *ApJ*, 482, 993
- Munro, M. P., Morgan, E. H., & Remillard, R. A. 1999, *ApJ*, 527, 321
- Orosz, J. A., & Bailyn, C. D. 1997, *ApJ*, 482, 1086
- Psaltis, D., Belloni, T., & van der Klis, M. 1999, *ApJ*, 526, 262
- Remillard, R. A., Morgan, E. H., McClintock, J. E., Bailyn, C. D., & Orosz, J. A. 1999, *ApJ*, 522, 397
- Remillard, R. A., McClintock, J. E., Sobczak, G. J., et al. 1999, *ApJ*, 517, 127
- Shimura, T., & Takahara, F. 1995, *ApJ*, 445, 780
- Sobczak, G. J., McClintock, J. E., Remillard, R. A., et al. 2000, *ApJ*, 531, 537 (SMR)
- Strohmayer, T. E. 2001, *ApJ*, 554, L169
- Strohmayer, T. E. 2001, *ApJ*, 552, L49
- Swank, J., Chen, X., Markwardt, C., & Taam, R. 1997, Proc. of the conference *Accretion Processes in Astrophysics: Some Like it Hot*, held at U. Md., October 1997, ed. S. Holt, & T. Kallman
- Tagger, M., & Pellat, R. 1999, *A&A*, 349, 1003
- Tagger, M. 1999, Proc. of the 5th Compton Symp., Portsmouth (USA) [[astro-ph/9910365](#)]
- van der Hooft, F., Heemskerk, M. H. M., Alberts, F., & van Paradijs, J. 1998, *A&A*, 329, 538
- van der Klis, M. 1994, *ApJS*, 92, 511
- Varnière, P., Rodriguez, J., & Tagger, M. 2002, *A&A*, 387, 497 (Paper II)
- Wilson, C. A., Harmon, B. A., Fishman, G. J., et al. 1994, *A&AS*, 185, 120
- Zhang, S. N., Ebisawa, K., Sunyaev, R., et al. 1997a, *ApJ*, 479, 381
- Zhang, S. N., Cui, W., & Chen, W. 1997b, *ApJ*, 482, L155