



HAL
open science

Ordovician to Lower Silurian palynomorphs from the Sierras subandinas (Subandean ranges), northwestern Argentina: a preliminary report

Claudia Viviana Rubinstein

► **To cite this version:**

Claudia Viviana Rubinstein. Ordovician to Lower Silurian palynomorphs from the Sierras subandinas (Subandean ranges), northwestern Argentina: a preliminary report. *Carnets de Géologie / Notebooks on Geology*, 2005, CG2005 (M02/09), pp.51-56. hal-00167623

HAL Id: hal-00167623

<https://hal.science/hal-00167623>

Submitted on 22 Aug 2007

HAL is a multi-disciplinary open access archive for the deposit and dissemination of scientific research documents, whether they are published or not. The documents may come from teaching and research institutions in France or abroad, or from public or private research centers.

L'archive ouverte pluridisciplinaire **HAL**, est destinée au dépôt et à la diffusion de documents scientifiques de niveau recherche, publiés ou non, émanant des établissements d'enseignement et de recherche français ou étrangers, des laboratoires publics ou privés.

**Ordovician to Lower Silurian palynomorphs
from the Sierras subandinas (Subandean ranges),
northwestern Argentina: a preliminary report.**

**[Palynomorphes de l'Ordovicien et du Silurien inférieur
des Sierras subandinas ("Chaînes sub-andines"),
nord-ouest de l'Argentine : rapport préliminaire]**

Claudia Viviana RUBINSTEIN¹

Key Words: Ordovician; Silurian; palynomorphs; biostratigraphy; palaeogeography; palaeoenvironment

RUBINSTEIN C.V. (2005).- Ordovician to Lower Silurian palynomorphs from the Sierras subandinas (Subandean ranges), northwestern Argentina: a preliminary report. *In*: STEEMANS P. & JAVAUX E. (eds.), Pre-Cambrian to Palaeozoic Palaeopalynology and Palaeobotany.- [Carnets de Géologie / Notebooks on Geology](#), Brest, Memoir 2005/02, Abstract 09 (CG2005_M02/09)

Mots-Clefs : Ordovicien ; Silurien ; palynomorphes ; biostratigraphie ; paléogéographie ; paléoenvironnement

Introduction

Ordovician clastic sediments of the Central Andean Basin, northwestern Argentina, were deposited in a proto-Andean foreland basin on the western margin of Gondwana (ASTINI, 2003; ASTINI & MARENGO, 2003). The Sierras Subandinas (Subandean Ranges) represent the outermost exposures of this Ordovician basin, where proximal environmental settings and their related palynological content are currently being analysed. These platform facies are exposed in the Eastern Cordillera, where palynological knowledge has increased remarkably in recent years (RUBINSTEIN & TORO, 2001; RUBINSTEIN, 2003). On the other hand palynological information on the deep marine facies exposed in the Puna is still meager and involves only the Ordovician-Silurian boundary (RUBINSTEIN & VACCARI, 2004) (Pl. 1).

The outermost portion of the foreland basin, the Sierras Subandinas, is characterized by alternating shallow-marine deltaic systems and estuarine environments, which indicate repeated changes in the coast line caused by fluctuations in relative sea-level (ASTINI & MARENGO, 2003) (Pl. 1). These authors undertook a detailed study of sequence stratigraphy in the Ordovician-earliest Silurian rocks of this region. However, determination of their age is difficult because of the scarcity in some units of biostratigraphically useful fossils.

Ordovician and earliest Silurian rocks are well exposed along the Río Capillas, in the Sierra de Zapla, Jujuy Province (Fig. 1). The lowest unit is the Zanjón Formation, considered as middle-late Arenig. It is followed in succession by the Labrado Formation with its two sub-units, the late Arenig Laja Morada

Member and the early-middle Llanvirn Lagunillas Member; the Capillas Formation, of late Llanvirn-basal Caradoc age; the Centinela Formation, considered to be not older than late Caradoc, and the Zapla Formation of Hirnantian age. The uppermost Ordovician is overlain by the Silurian Lipeón Formation that initiates a separate supercycle (ASTINI & MARENGO, 2003; ASTINI *et alii*, 2003).

This work analyses the succession of palynological assemblages throughout the Ordovician and lower Silurian, and attempts to determine the biostratigraphic control of the units, their palaeogeographic affinities, and the palaeoenvironmental changes related to recurrent fluctuations in sea level.

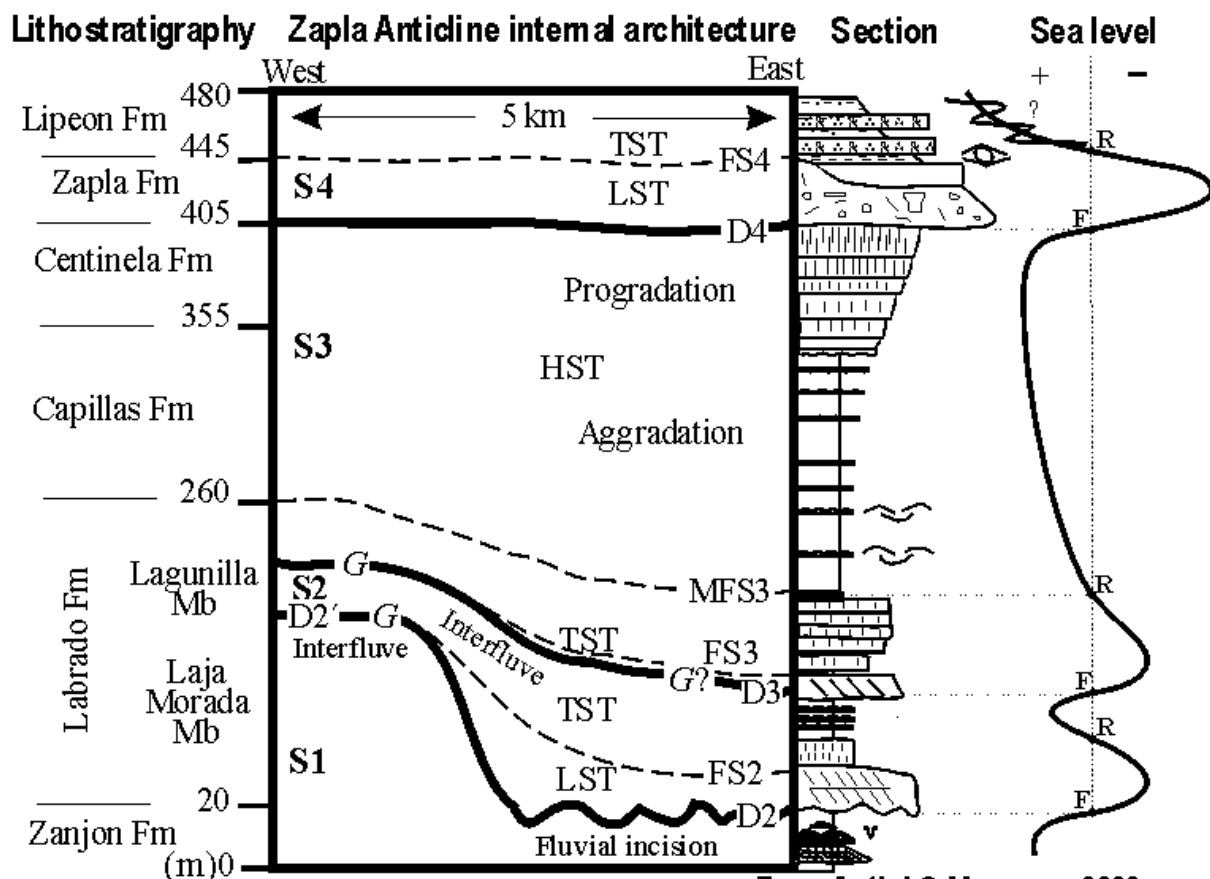
Palynological results

All units involved in this study yielded palynomorph assemblages that include acritarchs and related marine forms, chitinozoans and cryptospores (Pl. 1). Their abundance, diversity and preservation range widely in accordance with stratigraphic level and sedimentary facies.

Detailed descriptions and illustrations of the palynological assemblages from all units discussed herein are currently in progress.

The Zanjón Formation is characterized by repeated tidal parasequences that shallow-upward into heterolithic and muddy intervals. It yielded a rich acritarch assemblage containing *Striatotheca principalis parva* BURMANN 1970, *Arbusculidium filamentosum* (VAVRDOVÁ) VAVRDOVÁ 1972 emend. FATKA *et* BROCKE 1999, *Aureotesta clathrata* var. *simplex* (CRAMER *et alii*) emend BROCKE *et alii* 1998, *Cymatiogalea*

¹ CONICET, Unidad de Paleopalínología, IANIGLA, CRICYT, C.C. 131, 5500 Mendoza (Argentina)
crubinst@lab.cricyt.edu.ar



From Astini & Marengo, 2003

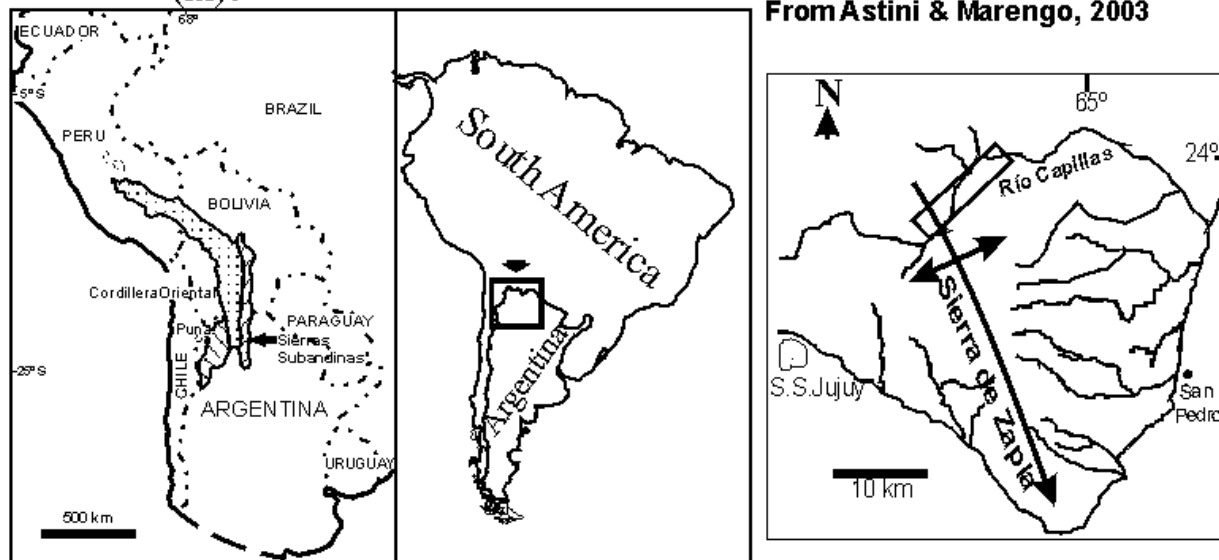


Figure 1: Location map of the study area, in the Sierras Subandinas, north-west Argentina. Ordovician and Lower Silurian stratigraphy of the Sierra de Zapla, recognized sequences, lithologies and sea-level curve from ASTINI & MARENGO, 2003.

granulata VAVRDOVÁ 1966, *Cymatiogalea messaoudensis* JARDINÉ *et alii* 1974 var. *messaoudensis* autonym, *Rhopaliophora palmata* (COMBAZ *et* PENIGUEL) PLAYFORD *et* MARTIN 1984, *Dactylofusa velifera* COCCHIO forma *brevis* ALBANI 1989, *Eisenackidium orientalis* RUBINSTEIN *in* RUBINSTEIN *et alii*, 1999, *Coryphidium* sp., and *Vogtlandia* sp.. This assemblage can be correlated with acritarchs of the Acoite Formation in the Cordillera Oriental. Consequently, its age is not younger than

middle Arenig, although stratigraphic correlation suggests that it includes the late Arenig.

The lower subdivision of the Labrado Formation, the Laja Morada Member, records exposure during a lowering of relative sea level indicated by subaerial features and a gradual change toward purple-red colours near the top. Consequently, the only palynomorphs present are leiospheres and other prasinophycean algae such as *Cymatiosphaera*, all devoid of

stratigraphic value. The upper Lagunillas Member, representing restricted estuarine facies, yielded a poorly diversified assemblage with some acritarchs such as ? *Aremoricanium simplex* LOEBLICH & MCADAM 1971, in addition to leiospheres.

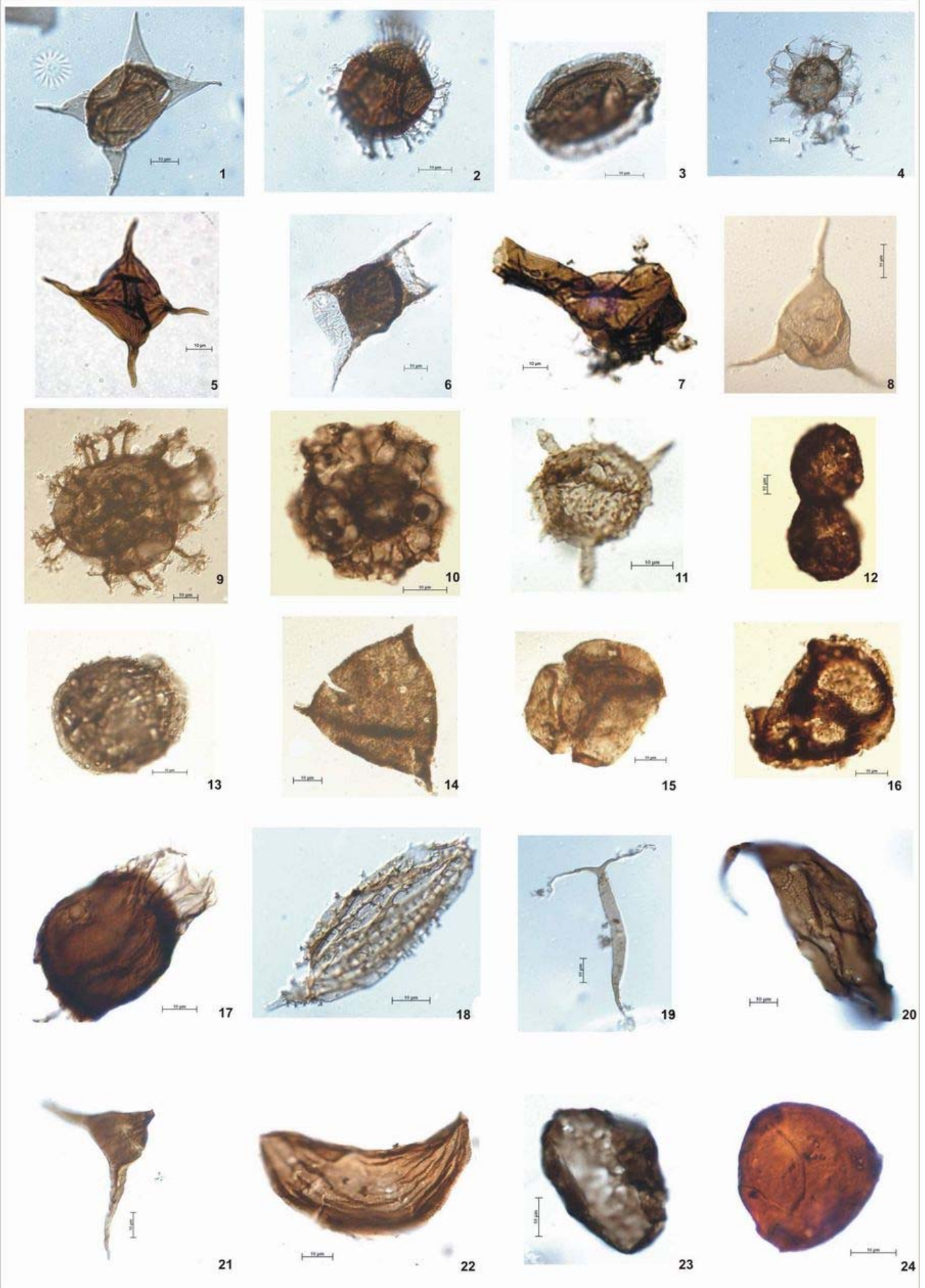
Transition to the open marine deposits of the Capilla Formation is indicated by a maximum flooding surface. This formation yielded a rich and well-preserved acritarch assemblage containing such taxa as *Arbusculidium filamentosum*, *Striatotheca* spp., *Arkonion* sp., *Dactylofusa* cf. *D. striatogranulata* JARDINÉ *et alii* 1974, *Ericanthea pollicipes* CRAMER *et* DÍEZ 1977, *Liliosphaeridium* cf. *L. intermedium* (EISENACK) PLAYFORD *et alii* 1995 and *Leprotylpa evexa* COLBATH 1979. It also contains cryptospores of the morphon *Dyadospora murusattenuata* STROTHER *et* TRAVERSE 1979 *sensu* STEEMANS *et alii* 1996, and *Sphaerasaccus glabellus* STEEMANS *et alii* 2000. The latest record of *Arbusculidium filamentosum*, independently dated, is probably lowermost Llanvirn. But other less well age-constrained records of its occurrence attain the Llanvirn and may reach the Caradoc strata (TONGIORGI *et alii*, 2003). The genus *Striatotheca* may also extend up to the Caradoc (VECOLI & LE HÉRISSE, 2004). The genus *Arkonion*, and the species *Ericanthea pollicipes* and *Liliosphaeridium* cf. *L. intermedium* were recorded from Llanvirn strata (TONGIORGI *et alii*, 2003; VECOLI & LE HÉRISSE, 2004) and *Dactylofusa striatogranulata*, previously known only in the Ashgill has recently been found in the middle Arenig (uppermost Lower Ordovician) of Argentina (ACHAB *et alii*, in press). Furthermore, *Leprotylpa evexa* is unknown below the base of the Caradoc (VECOLI & LE HÉRISSE, 2004). Although there is some dispersion in the stratigraphic ranges of the acritarch species, a late Llanvirn-earliest Caradoc age assignment for the Capilla Formation based on the presence of *Sacabambaspis janvieri* (Vertebrata), roughly agrees with the age inferred from the palynomorph assemblages.

The Centinela Formation contains mainly leiospheres, pre-cryptospores and simple acanthomorph acritarchs, and testifies to a possible progradation of localized deltaic complexes. At its upper limit a regional unconformity correlated with a major eustatic fall in sea-level caused by the Hirnantian glaciation separates the Centinela Formation from the uppermost Ordovician Zapla Formation.

The palynomorph assemblages of the Zapla glacial horizon are dominated by marine elements such as *Villosacapsula* sp., subordinate acanthomorph acritarchs (*Polygonium*, *Micrhystridium*, *Multiplicisphaeridium*) and leiospheres, but also

contain terrestrial cryptospores (mainly tetrads). Stratigraphically, the Zapla Formation is dated latest Ordovician, probably corresponding to the Hirnantian Glaciation. However, chitinozoans indicate an Aeronian *s.l.* to early Telychian age (GRAHN & GUTIÉRREZ, 2001). Acritarch assemblages are meager and not well preserved so they do not provide accurate stratigraphic control. In addition, transgressive-regressive events frequently caused reworking of fossils. Nevertheless, it should be noted that no typical Silurian forms were found among acritarchs or cryptospores. Further investigations, particularly on chitinozoans from the levels under discussion, may shed some light on this controversy.

The Lipeón Formation initiates a new supercycle with the deposition of oolitic ironstones during the transgression that followed the Hirnantian glaciation. These Silurian deposits correspond to a series of high-frequency sea-level fluctuations. In the area studied the lowermost levels of the Lipeón Formation have yielded abundant, diverse and well-preserved palynomorphs. The assemblage is dominated by acritarchs and prasinophyte algae, but also contains cryptospores and chitinozoans. Acritarch species include *Domasia trispinosa* DOWNIE 1960, *Domasia elongata* DOWNIE 1960, *Dactylofusa estillis* CRAMER *et* DIEZ 1972, *Dactylofusa maranhensis* BRITO *et* SANTOS 1965, *Beromia rexroadii* WOOD 1996, *Baiomeniscus camurus* LOEBLICH 1970, *Carminella maplewoodensis* CRAMER 1968, *Eupoikilofusa striatifera* (CRAMER) CRAMER 1970, among others. Cryptospores are represented by tetrads and also *Imperfectotriletes vavrdovae* (RICHARDSON) STEEMANS *et alii* 2000 and *Laevolancis chibrikovae* STEEMANS *et alii* 2000. The acritarch assemblage shares some species with those described by BULTYNCK & MARTIN (1982) from the lower part of the unit, dated late Llandovery-early Wenlock, and also has species in common with acritarch assemblages from the Vargas Peña Formation, in Paraguay (WOOD & MILLER, 1997). The palynomorphs of the Lipeón Formation have particularly strong affinities with the assemblage of the Tianguá Formation, in the Brazilian Parnaíba Basin (LE HÉRISSE *et alii*, 2001). In the Subandean Ranges, the lower part of this unit was referred to the early Llandovery (*Parakidograptus acuminatus*-*Atavograptus atavus* graptolite biozones) by RICKARDS *et alii* (2002). On the other hand, in the Río Capillas section, chitinozoans indicate a late Telychian age for the lower part of this formation (GRAHN & GUTIÉRREZ, 2001). Nevertheless, the acritarch assemblage of the Lipeón Formation suggests an age probably near the Aeronian/Telychian boundary and not older than late Aeronian (RUBINSTEIN & TORO, in press).



◀ **Plate 1:** The palynological slides are housed in the Paleopalynological Slide Collection of the Unit of Paleopalynology, IANIGLA, CRICYT, Mendoza. Specimen locations are referred to using England Finder coordinates.

1- *Eisenackidium orientalis* RUBINSTEIN *in* RUBINSTEIN *et alii*, 1999. Zanjón Fm, 7999d, U33/1.

2- *Cymatiogalea granulata* VAVRDOVÁ 1966. Zanjón Fm, 7999d, K41/2.

3- *Dactylofusa velifera* COCCHIO forma *brevis* ALBANI 1989. Zanjón Fm, 8000d, N35/3.

4- *Cymatiogalea messaoudensis* JARDINÉ *et alii* 1974 var. *messaoudensis* autonym. Zanjón Fm, 7999c, E34/0.

5- *Striatotheca principalis parva* BURMANN 1970. Zanjón Fm, 7587i, A24/1.

6- *Aureotesta clathrata* var. *simplex* (CRAMER *et alii*) emend BROCKE *et alii* 1998. Zanjón Fm, 7999d, C37/2.

7- ?*Aremoricium simplex* LOEBLICH *et* MCADAM 1971. Labrado Fm, Lagunilla Member, 7595a, M26/1.

8- *Arkonion* sp. Capillas Fm, 7589g, N38/0.

9- *Liliosphaeridium* cf. *L. intermedium* (EISENACK) PLAYFORD *et alii* 1995. Capillas Fm, 7589c, W45/4.

10- *Ericanthea pollicipes* CRAMER *et* DIEZ 1977. Capillas Fm, 7589h, V40/2.

11- *Leprotolypa evexa* COLBATH 1979. Capillas Fm, 7588c, B22/1.

12- *Morphon Dyadospora murusattenuata* STROTHER *et* TRAVERSE 1979 *sensu* STEEMANS *et alii* 1996. Fm. Capillas, 7589h, F23/0.

13- *Sphaerasaccus glabellus* STEEMANS *et alii* 2000. Capillas Fm, 7589h, P36/1.

14- *Villosacapsula* sp. Zapla Fm, 7590e, B23/0.

15- Tetrad 1. Zapla Fm, 7590d, W35/3.

16- Tetrad 2. Zapla Fm, 7583d, S28/0.

17- *Carminella maplewoodensis* CRAMER 1968. Lipeón Fm, 7592d, W43/0.

18- *Dactylofusa maranhensis* BRITO *et* SANTOS 1965. Lipeón Fm, 7582e, Y34/2.

19- *Domasia elongata* DOWNIE 1960. Lipeón Fm, 7582e, L33/2.

20- *Dactylofusa estillis* CRAMER *et* DIEZ 1972. Lipeón Fm, 7592g, P30/0.

21- *Beromia rexroadii* WOOD 1996. Lipeón Fm, 7582e, M27/0.

22- *Baiomeniscus camurus* LOEBLICH 1970. Lipeón Fm, 7592g, Y38/0.

23- *Laevolancis chibrikovae* STEEMANS *et alii* 2000. Lipeón Fm, 7592f, Y44/2.

24- *Imperfectotriletes vavrdovae* (RICHARDSON) STEEMANS *et alii* 2000. Lipeón Fm, 7582e, F25/2.

Conclusions

Although still in a very preliminary stage, the analyses in this contribution provide biostratigraphic, palaeogeographic and palaeoenvironmental information about the palynomorph assemblages of the Central Andean Basin. They cover almost all of Ordovician, the Ordovician/Silurian transition and the Lower Silurian.

The acritarch assemblages of the Zanjón Formation provide the first age constraint for this unit. For the Capillas Formation, acritarch assemblages support the age suggested by other fossils. The palynomorph assemblages of the Zapla and Lipeón formations allow an independent age assessment.

From a palaeogeographic viewpoint, it is significant that acritarchs from the Zanjón Formation clearly show affinities to those of the peri-Gondwana province. Acritarchs of the lower Silurian also have Gondwanian affinities.

Palynological assemblages recovered from the several depositional settings vary in diversity, composition and abundance, thus indicating the existence of a relationship between palynomorphs and local palaeoenvironments.

Acknowledgments

Financial support for this study was provided by the ANPCyT-FONCyT (PICT 99 No 5387, PICT 2000 No 8920) and the CONICET. The author is grateful to J.H.G. MELO (PETROBRAS, Brazil) for reviewing the English version. C. WELLMAN (Sheffield, UK) and P. STEEMANS (Liège, Belgium) are thanked for their advice concerning miospores and A. LE HÉRISSE (Brest, France) for the review of the manuscript and useful suggestions. The author benefited from a NFSR post-doctoral grant at the University of Liège.

Bibliographic references

- ACHAB A., RUBINSTEIN C.V. & ASTINI R.A. (in press).- Chitinozoans and acritarchs from the Ordovician peri-Gondwana volcanic arc of the Famatina System, northwestern Argentina.- *Review of Palaeobotany and Palynology*, Amsterdam.
- ASTINI R.A. (2003).- Ordovician basins of Argentina. *In*: BENEDETTO J.L. (ed.), Ordovician fossils of Argentina.- Secretaría de Ciencia y Tecnología, Universidad Nacional de Córdoba, Córdoba, p. 1-74.
- ASTINI R.A. & MARENGO L. (2003).- Sequence stratigraphy of Perigondwanic Ordovician clastics at the outermost reach of the Protoandean Foreland, Sierras Subandinas, Argentina.- 3rd Latin American Congress of Sedimentology (June 8-11, 2003), Belém, Extended Abstracts Volume.
- ASTINI R.A., MARENGO L. & RUBINSTEIN C.V. (2003).- The Ordovician stratigraphy of the Sierras Subandinas (Subandean Ranges) in northwest Argentina and its bearing on an integrated foreland basin model for the Ordovician of the Central Andean Region. *In*: ALBANESI G.L., BERESI M.S. & PERALTA S.H. (eds.), Ordovician from the Andes. Proceedings of the 9th International Symposium on the Ordovician System.- INSUGEO, *Serie de Correlación Geológica*, Tucumán, 17, p. 381-386.
- BULTYNCK P. & MARTIN F. (1982).- Conodontes et Acritarches de l'Ordovicien inférieur et acritarches du Silurien inférieur de la partie septentrionale de la Cordillère Argentine.- *Bulletin de l'Institut Royal des Sciences naturelles de Belgique*, Bruxelles, (Sciences de la Terre), vol. 53, n° 4, p. 1-21.

- GRAHN Y. & GUTIERREZ P.R. (2001).- Silurian and Middle Devonian Chitinozoa from the Zapla and Santa Bárbara Ranges, Tarija Basin, northwestern Argentina.- *Ameghiniana*, Buenos Aires, 38(1), p. 35-50.
- LE HÉRISSE A., MELO J.H.G., QUADROS L.P., GRAHN Y. & STEEMANS P. (2001).- Palynological characterization and dating of the Tianguá Formation, Serra Grande Group, northern Brazil. *In*: MELO J.H.G. & TERRA G.J.S. (eds.), *Correlação de Sequências Paleozóicas Sul-Americanas*.- *Ciência-Técnica-Petróleo. Seção: Exploração de Petróleo*, Rio de Janeiro, 20, p. 25-40.
- RICKARDS R.B., ORTEGA G., BASSETT M., BOSO M.A. & MONALDI C.R. (2002).- *Talacastograptus*, an unusual biserial graptolite, and other Silurian forms from Argentina and Bolivia.- *Ameghiniana*, Buenos Aires, vol. 39 (3), p. 343-350.
- RUBINSTEIN C.V. (2003).- Ordovician acritarchs from northwestern Argentina: new insight into the biostratigraphy and paleoenvironmental aspects of the Central Andean Basin and Famatina. *In*: ALBANESI G.L., BERESI M.S. & PERALTA S.H. (eds.), *Ordovician from the Andes. Proceedings of the 9th International Symposium on the Ordovician System*.- *INSUGEO, Serie de Correlación Geológica*, Tucumán, 17, p. 125-130.
- RUBINSTEIN C.V. & TORO B.A. (2001).- Review of acritarch biostratigraphy in the Arenig of Eastern Cordillera, northwestern Argentina. New data and calibration with the graptolite zonation. *In*: WEISS R.H. (ed.), *Contributions to Geology and Palaeontology of Gondwana*.- Geological Institute, University of Cologne, p. 421-439.
- RUBINSTEIN C.V. & TORO B.A. (in press).- Aeronian (Llandovery, Lower Silurian) palynomorphs and graptolites from the Lipeón Formation, Eastern Cordillera, north-west Argentina.- *Geobios*, Lyon.
- RUBINSTEIN C.V. & VACCARI N.E. (2004).- Cryptospore assemblages from the Ordovician/Silurian boundary in the Puna, North-West Argentina.- *Palaeontology*, London, vol. 47, part 4, p. 1037-1061.
- TONGIORGI M., YIN L. & DI MILIA A. (2003).- Lower Yushmanian to lower Zhejiangian palynology of the Yangtze Gorges area (Daping and Huanghuachang sections), Hubei Province, South China.- *Palaeontographica, Abteilung B*, Stuttgart, vol. 266, p. 1-160.
- VECOLI M. & LE HÉRISSE A. (2004).- Biostratigraphy, taxonomic diversity, and patterns of morphological evolution of Ordovician acritarchs (organic-walled microphytoplakton) from the northern Gondwana margin in relation to palaeoclimatic and palaeogeographic changes.- *Earth-Science Reviews*, Amsterdam, 67, p. 267-311.
- WOOD G.D. & MILLER M. (1997).- The stratigraphic and paleoecologic importance of acritarchs, chitinozoans and spores from the Silurian Vargas Peña Shale, Paraguay.- 2nd European Meeting on the Palaeontology and Stratigraphy of South America (Heidelberg, September 2-4, 1997), Poster.