



**HAL**  
open science

## Using Factor Analyses to explore data generated by the National Grapevine Wood Diseases Survey

Frédéric Bertrand, Myriam Maumy, Lionel Fussler, Nathalie Kobes, Serge  
Savary, Jacques Grosman

► **To cite this version:**

Frédéric Bertrand, Myriam Maumy, Lionel Fussler, Nathalie Kobes, Serge Savary, et al.. Using Factor Analyses to explore data generated by the National Grapevine Wood Diseases Survey. *Case Studies in Business, Industry and Government Statistics*, 2007, 1 (2), pp. 183-202. hal-00166970

**HAL Id: hal-00166970**

**<https://hal.science/hal-00166970>**

Submitted on 13 Aug 2007

**HAL** is a multi-disciplinary open access archive for the deposit and dissemination of scientific research documents, whether they are published or not. The documents may come from teaching and research institutions in France or abroad, or from public or private research centers.

L'archive ouverte pluridisciplinaire **HAL**, est destinée au dépôt et à la diffusion de documents scientifiques de niveau recherche, publiés ou non, émanant des établissements d'enseignement et de recherche français ou étrangers, des laboratoires publics ou privés.

# Using Factor Analyses to explore data generated by the National Grapevine Wood Diseases Survey.

F. BERTRAND<sup>(1)</sup>, M. MAUMY<sup>(1)</sup>, L. FUSSLER<sup>(2)</sup>, N. KOBES<sup>(2)</sup>, S. SAVARY<sup>(3)</sup> and J. GROSMAN<sup>(4)</sup>

<sup>(1)</sup>Laboratoire de Statistique  
IRMA ULP (UMR 7501), 67084 Strasbourg cedex  
Email: [fbertran@math.u-strasbg.fr](mailto:fbertran@math.u-strasbg.fr), [mmaumy@math.u-strasbg.fr](mailto:mmaumy@math.u-strasbg.fr)

<sup>(2)</sup>DRAF-SRPV Alsace  
Cité administrative Gaujot, 67084 Strasbourg cedex  
Email: [lfussler@wanadoo.fr](mailto:lfussler@wanadoo.fr), [nathalie.kobes@agriculture.gouv.fr](mailto:nathalie.kobes@agriculture.gouv.fr)

<sup>(3)</sup>UMR Santé Végétale  
Centre INRA de Bordeaux, 33883 Villenave d'Ornon cedex  
Email: [ssavary@bordeaux.inra.fr](mailto:ssavary@bordeaux.inra.fr)

and

<sup>(4)</sup>DRAF-SRPV Rhône  
Cité administrative de la Part-Dieu, 69401 Lyon cedex 03  
Email: [jacques.grosman@agriculture.gouv.fr](mailto:jacques.grosman@agriculture.gouv.fr)

## ABSTRACT

The Grapevine Wood Diseases National Observatory yields a cohesive and large data set which may be dealt with using different approaches. In our study, we have to deal with complex data, as it is composed of quantitative and qualitative variables which evolve with time, since data for three successive years are available. The objective was to produce of the largest possible amount of information from this data set, in order to highlight main trends. To this aim, we used several techniques of data analysis. Our study thus developed in three points. First, relationships between the different variables are identified using bivariate measures of association and tests. Then factorial methods, namely multiple correspondence analysis and factor analysis of mixed data are used to look for multivariate dependencies between the variables of the dataset. Lastly, we used factor analysis of multi-tables, each table representing a year, in order to account for the successive years of data. The factor analysis of mixed data and the factor analysis of multi-tables will be detailed here, as well as all of our results.

**Keywords:** Fisher-Freeman-Halton exact test, Multiple correspondence analysis, Factor analysis of mixed data, Factor analysis of multi-tables.

## Foreword

It is easy to perform the following analyses with any statistical software providing MCA techniques and especially with **R** (Team, 2007) and the FactoMineR package (Husson, Lê and Mazet, 2007). Indeed this **R** package is fully integrated in the **R** Commander interface (Fox *et al.*, 2007) and therefore all the **R** code is generated automatically using menus and popup windows. Some of the procedures of FactoMineR package were slightly enhanced to produce the graphical outputs that were included throughout this paper. Yet all the **R** code lines written by the authors are available upon simple request to the corresponding author<sup>1</sup>.

## 1 Background

Since the 8<sup>th</sup> of November 2001 and the banning of the use of sodium arsenite in every sector of agriculture, in France then in Europe, there is no longer any authorized mean of curing the grapevine trunk diseases, namely the eutypa dieback (ED), the esca decline (ES) and the black dead arm (BDA). The sodium arsenite is a chemical made of arsenic and its use has been forbidden for the sake of wine growers, since there were hard evidence that this chemical is a carcinogenic one. The wine growers have been deeply concerned by this drastic measure since they feared that it may result in a steady rise of the grapevine trunk diseases rates in the French vineyards. Unfortunately, almost every times, the final stage of any of the grapevine trunk diseases is the death of the grapevine plant. Moreover, we should bear in mind that the scientific community lacks of accurate studies on the epidemiology of these diseases; no other cure could be quickly found and its use recommended.

In order to collect all the data and organize the activities of all the research teams working on the grapevine trunk diseases a national technical group was founded in 2001. This national technical group decided to create the National Grapevine Wood Diseases Survey for several years. We lay the emphasis on the fact that no other survey in the world was carried out with the same scale and with as many teams involved. Indeed, up to now, such surveys were only focused on a small area and on some varieties of vine, whereas the data that were collected by the National Grapevine Wood Diseases Survey deals with all the main French vine varieties and with all French vine-growing region. The duration of the survey was already extended from three years to six years and is to be extended to a total duration of nine years in order to provide a reliable set of data for a longitudinal data analysis. The primary objective<sup>2</sup> of the survey is to collect enough data to decide whether the banning of the use of sodium arsenite will result in a steady increase of the grapevine trunk diseases rates in order to be able to evaluate the economic scope of such an interdiction. The secondary objectives are to identify some of the factors that explain the variability of the grapevine trunk diseases rates and eventually design several experiments in order to validate the hypotheses that were highlighted by the survey's results.

## 2 Features of the survey

The memorandum DGAL/SDQP/N2003-8085 published on the 19<sup>th</sup> of Mai 2003<sup>3</sup> specified the features of the survey. We recall now the main features of the survey:

---

<sup>1</sup> Email : [fbertran@math.u-strasbg.fr](mailto:fbertran@math.u-strasbg.fr).

<sup>2</sup> The aims of the study are stated in the memorandum DGAL/SDQP/N2004-8126 which is available at the following address: <http://www.agriculture.gouv.fr/spip/IMG/pdf/dgaln20048126z.pdf>

<sup>3</sup> This memorandum is available at the following address: <http://www.agriculture.gouv.fr/spip/IMG/pdf/dgaln20038085.pdf>.

- Every French vine-growing region suffers from at least one of the grapevine trunk diseases and hereby is to be included in the survey. Yet, virtually, only 12 areas defined as well as vine-growing regions or administrative regions were sampled: Alsace, Aquitaine, Beaujolais –Rhône-Alpes–, Bourgogne, Centre, Diois –Rhône-Alpes–, Jura –Franche-Comté–, Languedoc-Roussillon, Midi-Pyrénées, Pays de la Loire, Poitou-Charentes, Provence-Alpes-Côte d'Azur. These areas are the widest vine-growing regions: the area covered by the grapevines in these regions accounts for 95,5 % of the total area covered by grapevines in France, see Table 1 and Figure 2. The Corse was not included in the survey since, as an island, it has its own specificity.
- At least 25 parcels per vine-growing region and per vine variety were to be surveyed, in order to suitably depict the repartitions, the frequencies and the intensities of the diseases according to the vine-growing region and per vine variety.
- For any of the parcels that were randomly chosen among the observation networks 300 grapevines are marked and spotted. These 300 grapevines were divided in 10 locations, randomly chosen in the parcel, of 30 grapevines. The size of the parcels was not taken into account for the selection of a parcel since it has no interest from an epidemiological point of view.
- The observations were carried out on the same locations, hence on the same grapevines, during the three years of the survey.
- The grapevine trunk diseases are searched for at two particular stages of the vine growth: the blossoming for the eutypa dieback and the veraison for the esca decline and the black dead arm. At this very moment, dead or non producing grapevines are also counted.
- The only preset criterion for the choice of a parcel is the vine variety.

The features of the survey were specified by the Department of agriculture and the national technical group, to whom the ITV<sup>4</sup> and the INRA<sup>5</sup> belong, agreed formally to it. From a statistical point of view, the sample sizes chosen for this survey are of the same magnitude of those that are usually used in that kind of studies.

As to the criterion for the choice of a parcel, the vine variety is a simple way of identifying the parcels and is therefore well suited for such a large scale study since more than 40 different groups are involved in the data collection. From a biological point of view, a wide range of vulnerabilities was observed between the vine varieties even among the same vine-growing region. As a result, the vine variety was guessed to be one of the most interesting factors and the survey was designed to make it possible to have that hypothesis thoroughly investigated.

For any of the parcels that were randomly chosen, additional information about the characteristics and the cropping habits were collected using questionnaires, see Figure 3.

<b>Wine-producing region</b>	<b>Area covered by grapevines (ha)</b>	<b>Percentage of total area covered by grapevines (%)</b>
<b>Alsace</b>	15 160.14	1.7

<sup>4</sup> Institut Technique de la Vigne et du Vin (Technical Institute of Grapevine and Wine).

<sup>5</sup> Institut National de la Recherche Agronomique (French National Institute for Agricultural Research).

<b>Aquitaine</b>	150 727.61	17.3
Auvergne	1 096.32	0.1
<b>Bourgogne</b>	29 973.03	3.4
<b>Centre</b>	22 244.65	2.5
Champagne-Ardennes <sup>6</sup>	28 181.57	3.2
Corse	7 089.85	0.8
<b>Franche-Comté</b>	2 017.70	0.2
Île de France	47.51	0.0
<b>Languedoc-Roussillon</b>	297 227.77	34.0
Limousin	49.52	0.0
Lorraine	181.51	0.0
<b>Midi-Pyrénées<sup>7</sup></b>	41 000.29	4.7
<b>Pays de la Loire</b>	37 877.60	4.3
Picardie	2 810.02	0.3
<b>Poitou-Charentes</b>	80 794.61	9.2
<b>Provence-Alpes-Côte d'Azur</b>	99 850.91	11.4
<b>Rhône-Alpes</b>	57 371.59	6.6
Total	873 702.20	100.0
<b>Total surveyed</b>	<b>834 245.90</b>	<b>95.5</b>

TABLE 1

*French administrative regions and the area covered by grapevines. In bold the regions that were sampled for the survey.*

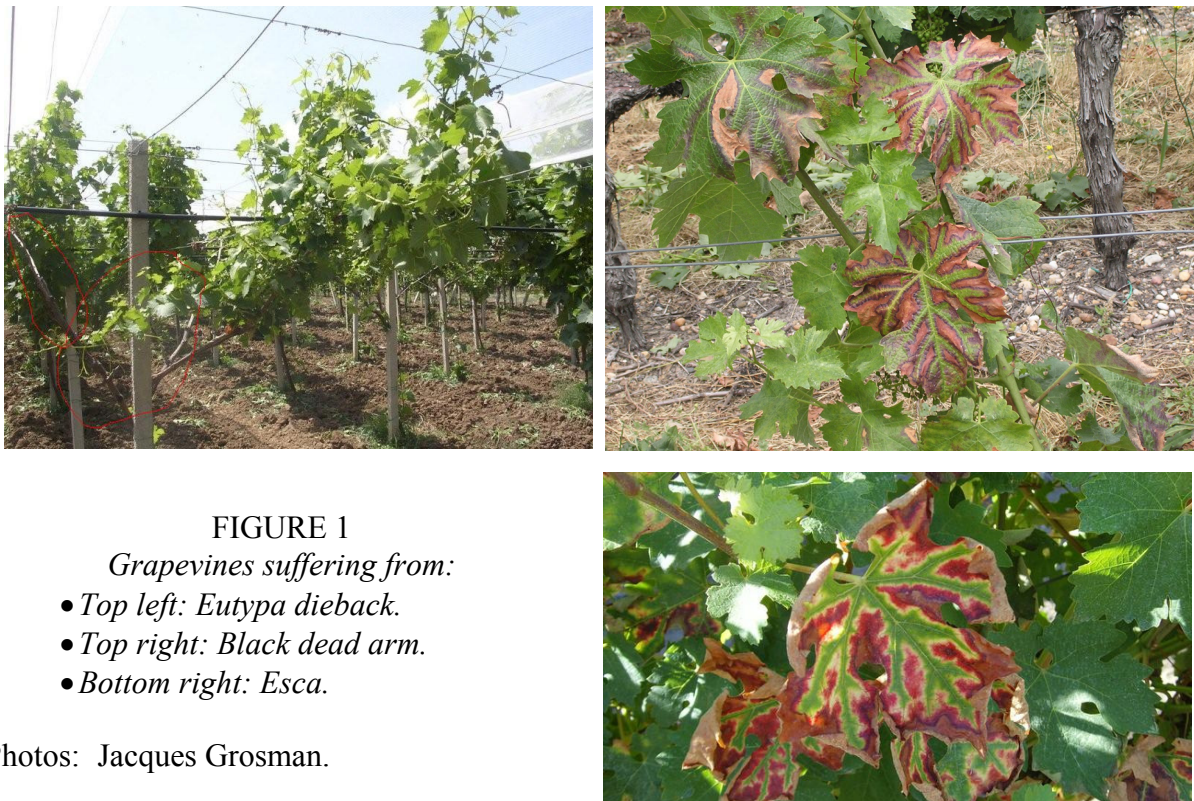


FIGURE 1

*Grapevines suffering from:*

- *Top left: Eutypa dieback.*
- *Top right: Black dead arm.*
- *Bottom right: Esca.*

Photos: Jacques Grosman.

<sup>6</sup> The Champagne-Ardennes vine-growing region settled its own local grapevine wood disease survey.

<sup>7</sup> The Midi-Pyrénées vine-growing region was to be sampled in 2003 and 2004 yet it virtually started to send back results in 2005 and therefore could not be included in the analysis for the 2003 to 2005 period.

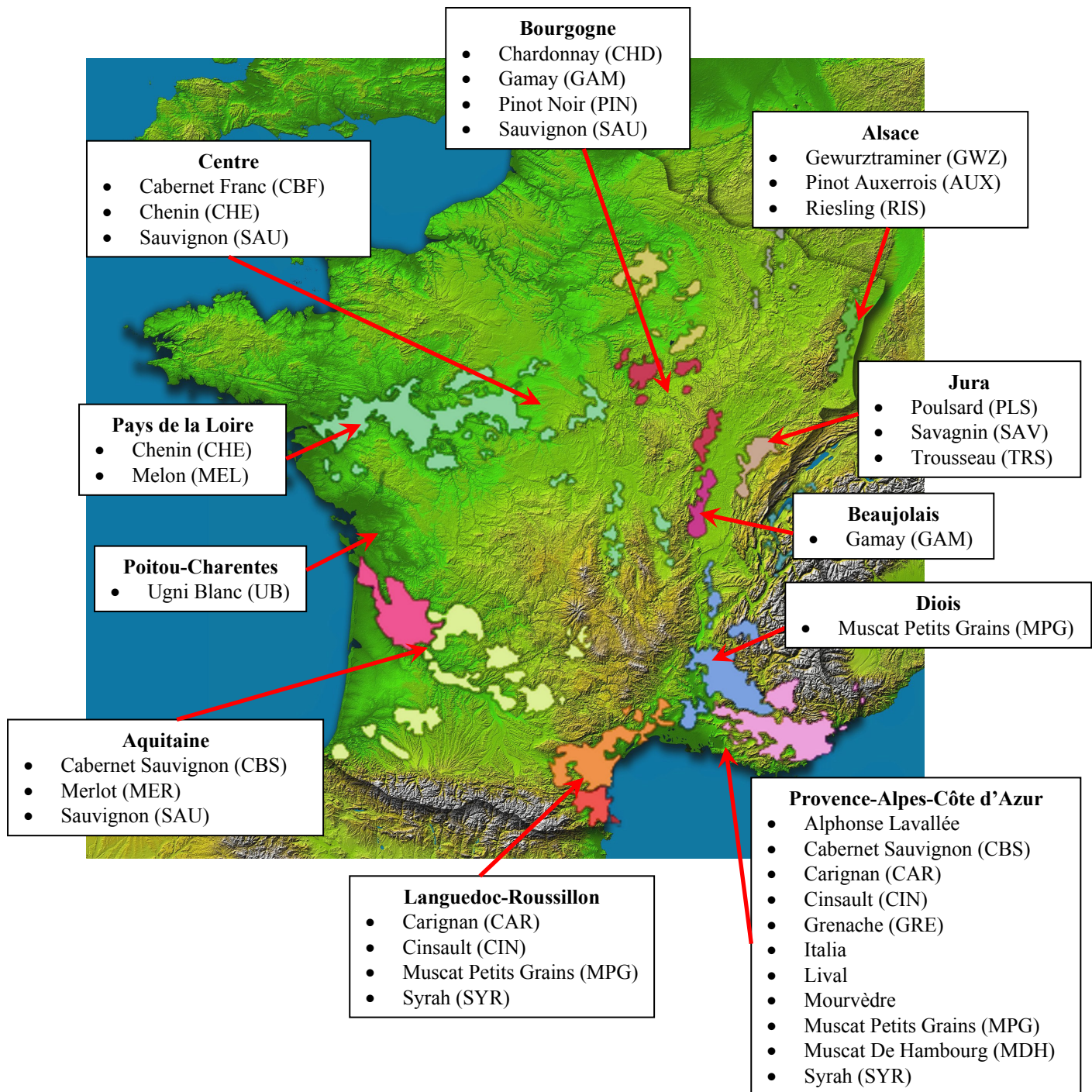


FIGURE 2

*French vine-growing regions and vine varieties produced there. The tags that were created to identify the vine varieties that were part of the analyses are put within brackets.*

Background image from the NASA's Earth Observatory : The Topography of France<sup>8</sup>.

<sup>8</sup> This image is available at the following address:  
[http://earthobservatory.nasa.gov/Newsroom/NewImages/images.php?img\\_id=15360](http://earthobservatory.nasa.gov/Newsroom/NewImages/images.php?img_id=15360).

<b>Vineyard of:</b>		<b>Organism(s):</b>	
<b>VINE GROWER</b>			
<b>Name First name:</b>		<b>Company name:</b>	
<b>Address:</b>		<b>Phone number:</b>	
		<b>Fax number:</b>	
		<b>Email:</b>	
<b>PARCEL</b>			
<b>Reference:</b>		<b>Vine variety (clone):</b>	
<b>Location:</b>		<b>Rootstock (clone):</b>	
<b>Name:</b>		<b>Year of planting:</b>	
		<b>Area:</b>	
<b>Pruning method:</b>		<b>Density of planting:</b>	
		<b>Vigour:</b>	high, medium or low
<b>Type of soil:</b>			
<b>WINTER TREATMENTS</b>			
<b>Sodium arsenite in 1999:</b>	yes or no	<b>Other:</b>	
<b>Sodium arsenite in 2000:</b>	yes or no	<b>Other:</b>	
<b>Sodium arsenite in 2001:</b>	yes or no	<b>Other:</b>	
<b>DISEASE PREVENTION MADE IN 2004</b>			
<b>Date of pruning:</b>	accuracy of at least a two weeks time period	<b>Pre-pruning:</b>	yes or no
<b>Management of pruning residues:</b>	crushed or removed	<b>Cleaning dead wood:</b>	removed or not
<b>Other grapevine trunk diseases prevention:</b>	"égourmandage", "perçage des souches", "traitement des plaies de taille", "environnement de la parcelle", ...		
<b>When did disease prevention start?</b>	write down the year		
<b>OTHER REMARKS</b>			

FIGURE 3  
*English translation of the questionnaire sent to any of the vine growers that was surveyed.*

### 3 Preliminary statistical study–Bivariate tests

The esca decline (ES) shows all the same symptoms that black dead arm (BDA), see Figure 1 for a visual proof of that statement. As a consequence, these two diseases are always confounded in the same disease that we call esca/BDA. We have three years of data, 2003, 2004 and 2005, at our disposal for these two diseases. In order to account for the variation of the intensities of the diseases among the population of cropped parcels as well as for the mortality rate of the grapevines the following factors and variables were chosen: the vine-growing region –factor–, the vine variety –factor–, the age of the parcel<sup>9</sup> –variable–, the density of planting –variable–, the rootstock that was used –factor–, the management of pruning residues –factor–, what happened to the dead wood –factor–, pre-pruning –factor–, the pruning method –factor–, the date of beginning and end of the pruning of the grapevine –two variables– and the number of times the sodium arsenite was used from 1999 to 2001, just before the use of that cure was banned –factor–. Other data, as the vigour of the grapevine –factor–, the type of soil –factor–, the area of the parcel –variable–, were also collected. Yet, these two factors and this variable were not included in the study because of a low level of response or a low reliability of the answers.

We recall that the incidence rate of a disease in a parcel is the percentage of grapevine trunks that suffer from the disease in a given parcel and that the mortality rate is estimated by summing, in a given parcel, the dead or missing grapevines and the young “complants” which are the recently replaced grapevines still not producing grapes, divided by the total number of the grapevines, about 300, whose state was observed in this parcel.

The dataset is made of 701 parcels surveyed in 12 vine-growing regions. 26 different vine varieties<sup>10</sup> belong to the dataset. These data were collected following a minute protocol during the three years of the study. We removed 4 vine varieties, the Alphonse Lavallée, the Italia, the Lival and the Mourvèdre, from the dataset since they accounted only for a total of 1.28 % of the total sample size. We also removed from the database any of the parcels for which there was an outlier or a missing value.

In order to investigate our primary and secondary objectives, we used several statistical methods. We started with a three-step preliminary data analysis.

First, we checked the dependencies between the variables in our dataset which showed that the influence of the age of the parcel was strong on the incidence and mortality rates especially on the incidence rate of the esca/BDA. This led us to identify mainly four different stages (see Table 2) of relationship between the age of the parcel and the three variables that we wanted to explain. These relationships frankly differed from a stage to another with even sign reversals in the coefficients of correlation between the age of the parcel and the incidence rates of the two diseases and the mortality rate. This is a minute work which is available upon simple request to the corresponding author<sup>11</sup>.

---

<sup>9</sup> The age of the parcel is equal to the age of most of the grapevines that belongs to that parcel.

<sup>10</sup> The Alphonse Lavallée, the Pinot Auxerrois, the Cabernet Franc, the Cabernet Sauvignon, the Carignan, the Chardonnay, the Chenin, the Cinsault, the Gamay, the Gewurztraminer, the Grenache, the Italia, the Lival, the Melon, the Merlot, the Mourvèdre, the Muscat de Hambourg, the Muscat à Petits Grains, the Pinot Noir, the Pouslard, the Riesling, the Sauvignon, the Savagnin, the Syrah, the Trousseau and the Ugni Blanc.

<sup>11</sup> These analyses are detailed in the report of Lionel Fussler.



Then, we carried out many non parametric Kruskal-Wallis tests, (Siegel and Castellan, 1988). The multiple comparisons made after these bivariate tests between a factor and a variable enabled us, for instance, to design sensibility classes to the two diseases among the different vine varieties. These results confirmed what was known up to now about the relative weakness of some of the vine varieties to the two diseases.

As a consequence of not only Kruskal-Wallis tests but also the many bivariate tests, like the independence  $\chi^2$  test, (Agresti, 1990), and Fisher-Freeman-Halton exact test, (Freeman and Halton, 1951), that we made<sup>12</sup> we could reduce the number of variables, from 15 to 8, which were to be part of the statistical analysis and only selected those which were linked to the incidence rate of any of the two diseases or to the mortality rate. These 8 variables are the following:

- vine-growing region,
- vine variety,
- age of the parcel,
- rootstock,
- management of pruning residues,
- pre-pruning,
- pruning method,
- number of times the sodium arsenite was used between in 1999 and 2001.

The main aim of this case study is to derive the main trends of evolution of the grapevine trunk diseases from an epidemiological point of view.

## **4 Multiple Correspondence Analysis**

The dataset is made of three tables, one per year. In this section, we consider the mean table of the three tables of data. As a consequence, the values of the incidences of the ED, the ES/BDA and the rate of mortality used in this part of the study, are the means of the values taken over the three years of the survey.

### **4.1 Multiple Correspondence Analysis: references**

For a tutorial on basic and advanced multiple correspondence analysis (MCA), we point out the books of Greenacre (1984, 1993), Bry (1995, 1996) and of Greenacre and Blasius (2006).

### **4.2 Application to the dataset generated by the National Grapevine Wood Diseases Survey**

The reason why the MCA has been chosen in first, is that this method allows us the simultaneous handling of the two types of attributes –quantitative and even qualitative through the recoding of the quantitative variables– and does not imply a priori assumptions on the variables, such a linear relationship between them or homoscedasticity.

The MCA was applied in two steps. At the beginning we made a multiple correspondence analysis with only the following active variables:

- the incidence rate of eutypa dieback,
- the incidence rate of esca/bda,
- the mortality rate of the grapevines,

---

<sup>12</sup> These analyses are detailed in the report of Lionel Fussler.

- the age of the parcel.

The main aim of the MCA was to spotlight the dependencies between the grapevine trunk diseases and the mortality rate of the grapevines. As a consequence of the results of the bivariate tests, we had to include the age of the parcel to account for some of the variation of the mortality rate of the grapevines and of the incidence rates of the grapevine trunk diseases. If the vine variety (22 levels) and vine-growing regions (11 levels) were not selected as active variables for this first analysis it is mainly due to both their too high number of levels and their unbalanced factor levels.

Then we studied the influence of the remaining variables as supplementary qualitative variables: these variables were represented on the very display we built during the first step. Yet for the sake of readability, we virtually plotted each of the supplementary qualitative variables on a different graph:

- vine-growing region,
- vine variety,
- number of times the sodium arsenite was used between 1999 and 2001,
- rootstock,
- pre-pruning,
- management of pruning residues,
- pruning method.

In order to achieve these analyses and use the MCA, it was mandatory to derive factor levels from segmenting the range of the continuous variables like the incidence rates of the two diseases and the mortality rate.

These factor levels were designed not only to comply with the results of the bivariate tests but also to set up balanced factor levels for each variable in order to avoid the shrinkage of the axes by the factor levels whose sizes are too low.

We now detail, following the recommendation of Savary *et al.* (1995), how to encode the quantitative variables into classes, *i.e.* define quantitative boundaries of classes and encode the values of the quantitative variables according to these boundaries. Performing this encoding process with care will allow the investigator to:

- define the boundaries such that they represent the (maximum possible) error made in the measurement of each variable (variables with low accuracy would be represented by a few, broad classes, while variables with high accuracy would be represented by a larger number of classes),
- link the definition of classes with key-values, thresholds, or any information that might be available beforehand.

The process of converting quantitative data into coded data is flexible, different options being available depending on the variable at hand and no statistical restriction made.

In our data set, the three rates and the age of the parcel were four continuous variables. As to the rates, they were categorized in three classes: low, medium and high not only on epidemiological grounds but also according to the dependencies between these three variables and the age of the parcel that were spotted during the preliminary analyses. So three grades, from 0 to 2, for every rate, as well as incidence or mortality one, are considered. The range of the age of the parcel was segmented in four intervals following the four stages we identified in Section 3. The Table 2 sums up the designed factor levels for the continuous variables.

The further analysis of the resulted coded data by means of contingency tables depends on the class-filling, and therefore on the number of classes relative to the size of the sample. Therefore we checked the consistency of the former dependencies spotted when the coded variables were continuous and the new dependencies we now spotted using  $\chi^2$  tests and Fisher-Freeman-Halton exact tests between the coded variables and the factors of our dataset.

<b>Variable</b>	<b>Symbol</b>	<b>Factor levels</b>	<b>Definition of factor levels</b>	<b>Unit</b>
<i>Diseases and mortality</i>				
<b>Eutypa Dieback</b>	Euty	Euty0; Euty1; Euty2	Euty0: Euty = 0; Euty1: $0 < \text{Euty} \leq 2$ ; Euty2: $2 < \text{Euty}$	%
<b>Esca/BDA</b>	Esca	Esca0; Esca1; Esca2	Esca0: Esca= 0; Esca1: $0 < \text{Esca} \leq 3$ ; Esca2: $3 < \text{Esca}$	%
<b>Mortality</b>	Mort	Mort0; Mort1; Mort2	Mort0: $0 \leq \text{Mort} < 3$ ; Mort1: $3 \leq \text{Mort} < 10$ ; Mort2: $10 \leq \text{Mort}$	%
<i>Active variable</i>				
<b>Age of the parcel</b>	Age	Age0; Age1; Age2; Age3	Age0: $0 \leq \text{Age} < 15$ ; Age1: $15 \leq \text{Age} < 25$ ; Age2: $25 \leq \text{Age} < 40$ ; Age3: $40 \leq \text{Age}$	years
<i>Supplementary variables</i>				
<b>Vine-growing region</b>	-	ALS; AQT; B JL; BRG; CEN; DIO; JUR; LRO; PAC; PCH; PDL	ALS: Alsace; AQT: Aquitaine; B JL: Beaujolais; BRG: Bourgogne; CEN: Centre; DIO: Diois; JUR: Jura; LRO: Languedoc-Roussillon; PAC: Provence-Alpes-Côte d'Azur; PCH: Poitou-Charentes; PDL: Pays de la Loire	none
<b>Vine variety</b>	-	AUX; CAR; CBF; CBS; CHD; CHE; CIN; GAM; GRE; GWZ; MDH; MEL; MER ; MPG; PIN; PLS; RIS; SAU; SAV; SYR; TRS; UB	AUX: Pinot Auxerrois; CAR: Carignan; CBF: Cabernet Franc; CBS: Cabernet Sauvignon; CHD: Chardonnay; CHE: Chenin; CIN: Cinsault; GAM: Gamay; GRE: Grenache; GWZ: Gewurztraminer; MDH: Muscat De Hambourg; MEL: Melon; MER: Merlot; MPG: Muscat Petits Grains; PIN: Pinot Noir; PLS: Poulsard; RIS: Riesling; SAU: Sauvignon; SAV: Savagnin; SYR: Syrah; TRS: Trousseau; UB: Ugni Blanc	none
<b>Number of use of the sodium arsenite</b>	Ars	Ars0; Ars1; Ars2; Ars3	Ars0: 0 time; Ars1: 1 time; Ars2: 2 times; Ars3: 3 times	none
<b>Rootstock</b>	-	101-14; 161-49; 3309C; 41B; R110; SO4	Name of the rootstock used	none
<b>Pre-pruning</b>	PreP	PreP0; PreP1	PreP0: no pre-pruning was done; PreP1: grapevine was pre-pruned	none
<b>Pruning residues</b>	-	Crushed; Burned; Removed	What happened to the pruning residues	none
<b>Pruning method</b>	-	Royat cordon; Gobelet; Guyot	Name of the method used to prune the grapevine	none

TABLE 2  
*Variables and their levels.*

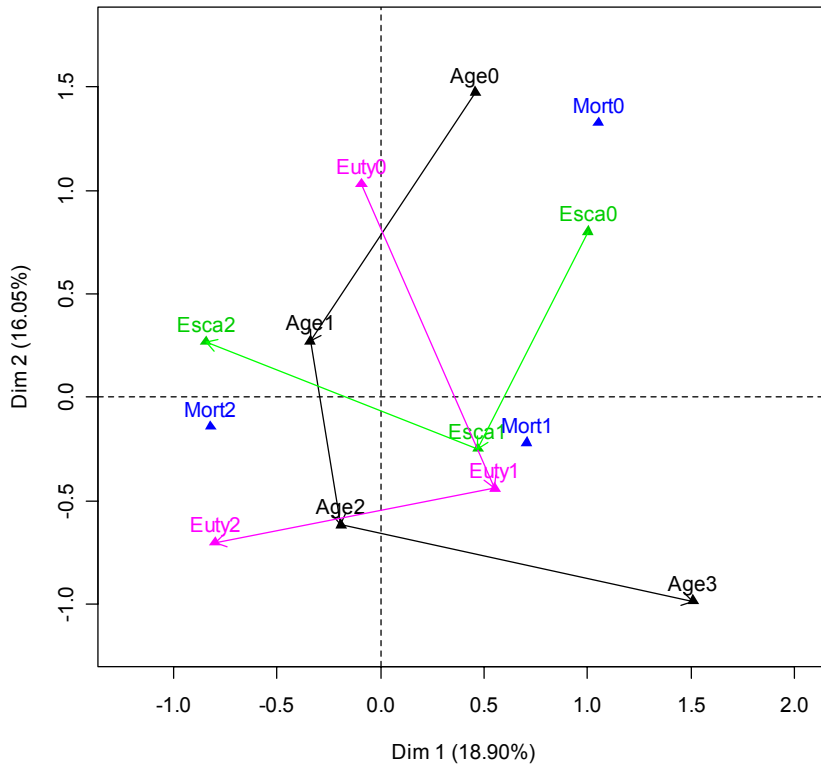


FIGURE 4  
 Display of the first and second principal axes of the MCA.

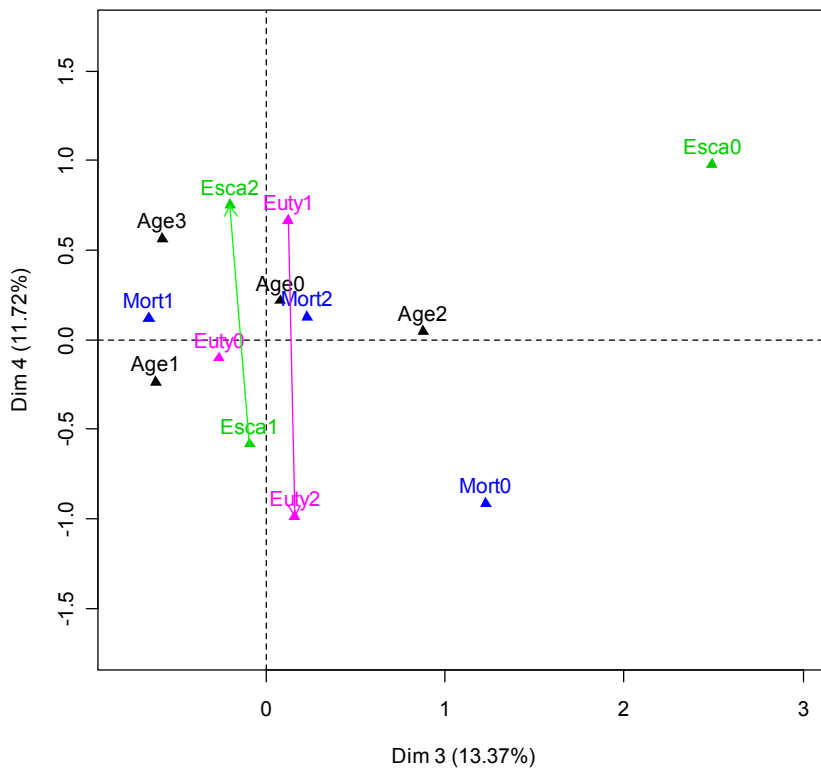


FIGURE 5  
 Display of the third and fourth principal axes of the MCA.

Axis	Singular eigenvalue	Percentage of inertia		Axis	Singular eigenvalue	Percentage of inertia	
		Individual	Cumulated			Individual	Cumulated
1	0.652	18.904	18.904	6	0.454	9.164	79.745
2	0.601	16.049	34.953	7	0.435	8.411	88.156
3	0.549	13.372	48.326	8	0.415	7.661	95.818
4	0.514	11.720	60.046	9	0.307	4.182	100.000
5	0.487	10.536	70.582				

TABLE 3  
*Eigenvalues and percentages of inertia with respect to the principal axes of the MCA.*

	Mass	Quality	Relative Inertia	Coord. Dim. 1	Inertia Dim. 1	Cosine <sup>2</sup> Dim. 1	Coord. Dim. 2	Inertia Dim. 2	Cosine <sup>2</sup> Dim. 2
Euty0	0.086	0.657	0.073	-0.093	0.002	0.005	1.030	0.252	0.553
Euty1	0.103	0.587	0.065	0.551	0.074	0.214	-0.439	0.055	0.136
Euty2	0.061	0.756	0.084	-0.802	0.092	0.208	-0.703	0.083	0.159
Esca0	0.013	0.949	0.105	1.002	0.030	0.054	0.802	0.023	0.035
Esca1	0.143	0.429	0.048	0.469	0.074	0.293	-0.249	0.025	0.083
Esca2	0.094	0.622	0.069	-0.844	0.158	0.433	0.268	0.019	0.044
Mort0	0.030	0.882	0.098	1.053	0.077	0.148	1.326	0.144	0.236
Mort1	0.098	0.606	0.067	0.704	0.115	0.322	-0.222	0.013	0.032
Mort2	0.122	0.512	0.057	-0.823	0.194	0.646	-0.142	0.007	0.019
Age0	0.033	0.866	0.096	0.458	0.016	0.032	1.472	0.201	0.335
Age1	0.105	0.579	0.064	-0.340	0.029	0.084	0.270	0.021	0.053
Age2	0.087	0.654	0.073	-0.192	0.007	0.020	-0.617	0.091	0.202
Age3	0.025	0.902	0.100	1.508	0.132	0.248	-0.986	0.066	0.106

	Mass	Quality	Relative Inertia	Coord. Dim. 3	Inertia Dim. 3	Cosine <sup>2</sup> Dim. 3	Coord. Dim. 4	Inertia Dim. 4	Cosine <sup>2</sup> Dim. 4
Euty0	0.086	0.657	0.073	-0.263	0.020	0.036	-0.103	0.003	0.006
Euty1	0.103	0.587	0.065	0.124	0.005	0.011	0.667	0.174	0.314
Euty2	0.061	0.756	0.084	0.159	0.005	0.008	-0.985	0.225	0.313
Esca0	0.013	0.949	0.105	2.489	0.263	0.334	0.981	0.047	0.052
Esca1	0.143	0.429	0.048	-0.091	0.004	0.011	-0.584	0.185	0.454
Esca2	0.094	0.622	0.069	-0.200	0.013	0.024	0.749	0.201	0.341
Mort0	0.030	0.882	0.098	1.226	0.147	0.201	-0.913	0.093	0.112
Mort1	0.098	0.606	0.067	-0.653	0.140	0.277	0.119	0.005	0.009
Mort2	0.122	0.512	0.057	0.230	0.021	0.051	0.125	0.007	0.015
Age0	0.033	0.866	0.096	0.080	0.001	0.001	0.217	0.006	0.007
Age1	0.105	0.579	0.064	-0.613	0.131	0.273	-0.238	0.023	0.041
Age2	0.087	0.654	0.073	0.879	0.222	0.409	0.045	0.001	0.001
Age3	0.025	0.902	0.100	-0.579	0.027	0.037	0.566	0.030	0.035

TABLE 4  
*Coordinates, contributions and square cosine of the levels of the active variables for the first four principal axes of the MCA.*

The analyses depicted here are the basis for the display of the supplementary qualitative variables. Since the supplementary variables do not contribute to the construction of the axes of the MCA, we will only provide their coordinates and square cosine.

<b>Variables and their levels</b>	<b>1<sup>st</sup> principal axis</b>		<b>2<sup>nd</sup> principal axis</b>	
<b>Vine-growing region</b>	<i>Coordinates</i>	<i>Cosine<sup>2</sup></i>	<i>Coordinates</i>	<i>Cosine<sup>2</sup></i>
ALS	-0.098	0.007	0.110	0.009
AQT	0.080	0.002	0.522	0.089
BJL	0.047	0.000	-0.818	0.136
BRG	0.712	0.251	-0.429	0.091
CEN	0.180	0.017	-0.348	0.062
DIO	0.622	0.148	-0.194	0.014
JUR	-0.512	0.127	0.487	0.115
LRO	-0.208	0.004	-0.034	0.000
PAC	-0.132	0.014	0.363	0.106
PCH	-1.024	0.231	-0.899	0.178
PDL	0.027	0.000	0.735	0.192
<b>Vine variety</b>	<i>Coordinates</i>	<i>Cosine<sup>2</sup></i>	<i>Coordinates</i>	<i>Cosine<sup>2</sup></i>
AUX	-0.269	0.039	-0.474	0.123
CAR	0.376	0.018	0.150	0.003
CBF	0.887	0.207	-0.347	0.032
CBS	-0.755	0.133	-0.241	0.013
CHD	0.672	0.200	-0.245	0.027
CHE	-0.124	0.002	-0.330	0.015
CIN	-0.769	0.075	-0.644	0.052
GAM	0.047	0.000	-0.818	0.136
GRE	0.505	0.038	0.083	0.001
GWZ	-0.103	0.006	0.351	0.068
MDH	-0.020	0.000	0.595	0.129
MEL	0.067	0.001	0.901	0.221
MER	0.995	0.075	1.106	0.093
MPG	0.641	0.167	-0.052	0.001
PIN	1.345	0.454	-0.646	0.105
PLS	-0.702	0.170	0.455	0.071
RIS	0.103	0.005	0.505	0.114
SAU	-0.518	0.084	-0.114	0.004
SAV	-0.678	0.146	0.687	0.150
SYR	-0.208	0.004	-0.034	0.000
TRS	-0.138	0.008	0.216	0.021
UB	-1.024	0.231	-0.899	0.178

<b>Variables and their levels</b>	<b>1<sup>st</sup> principal axis</b>		<b>2<sup>nd</sup> principal axis</b>	
	<i>Coordinates</i>	<i>Cosine<sup>2</sup></i>	<i>Coordinates</i>	<i>Cosine<sup>2</sup></i>
<b>Sodium arsenite</b>				
Ars0	-0.042	0.002	0.069	0.005
Ars1	0.197	0.030	-0.360	0.101
Ars2	0.038	0.001	-0.009	0.000
Ars3	-0.153	0.007	0.299	0.027
<b>Rootstock</b>				
101-14	0.006	0.000	-0.252	0.027
161-49	0.027	0.001	-0.052	0.002
3309C	0.086	0.006	0.127	0.014
41B	-0.465	0.121	-0.111	0.007
R110	0.119	0.003	0.580	0.074
SO4	-0.037	0.001	-0.152	0.022
<b>Pre-pruning</b>				
PreP0	-0.097	0.010	0.020	0.000
PreP1	0.121	0.015	-0.025	0.001
<b>Pruning residues</b>				
Crushed	-0.156	0.026	0.060	0.004
Burned	0.586	0.211	-0.287	0.050
Removed	0.207	0.014	0.141	0.007
<b>Pruning method</b>				
Royat cordon	-0.400	0.104	0.106	0.007
Gobelet	-0.002	0.000	-0.274	0.012
Guyot	0.024	0.001	-0.002	0.000

TABLE 5  
*Coordinates and square cosine of the levels of the supplementary variables.*

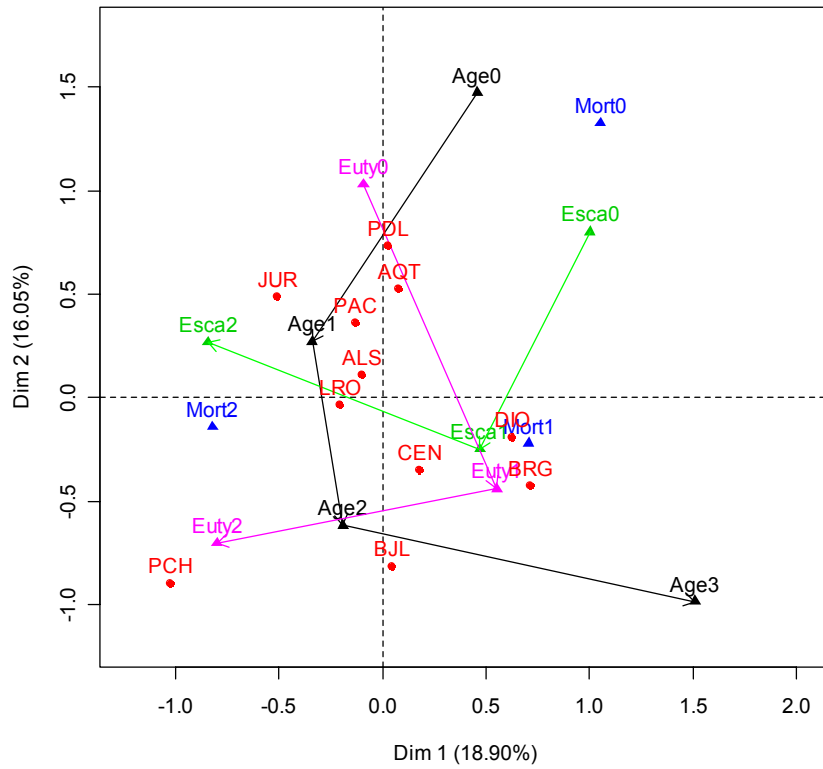
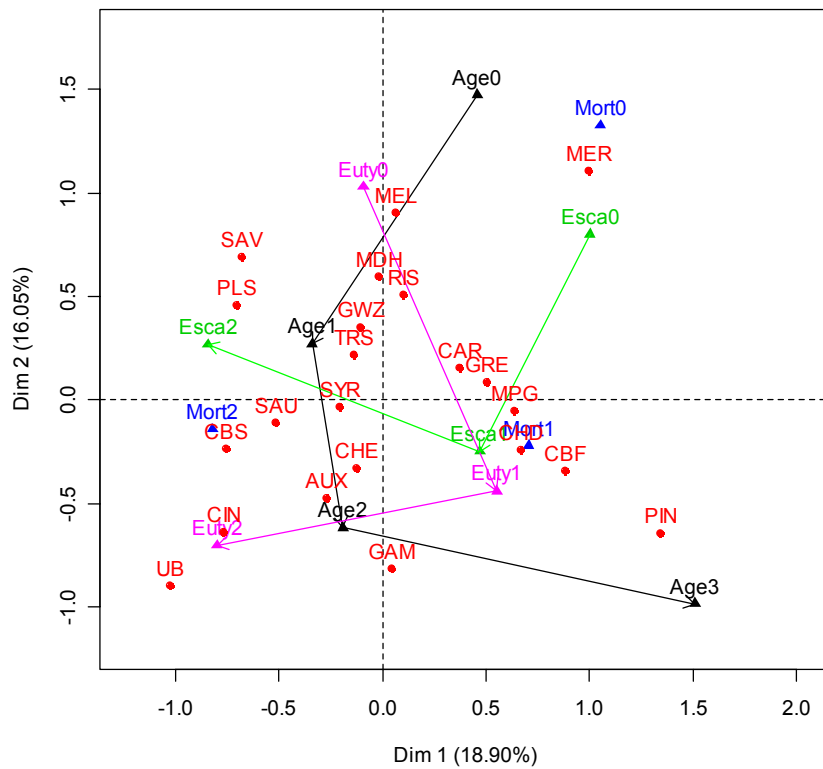


FIGURE 6

*Display on the first and second principal axes of the MCA of the two supplementary variables the vine-growing region, on top, and the vine variety, on bottom.*





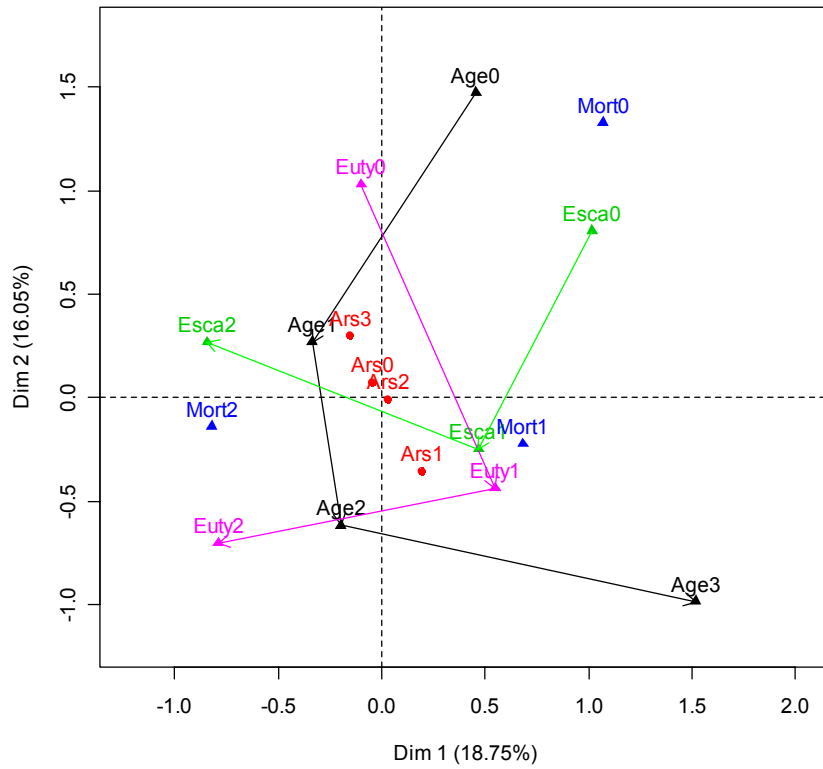


FIGURE 7

Display on the first and second principal axes of the MCA of the number of use of the sodium arsenite.

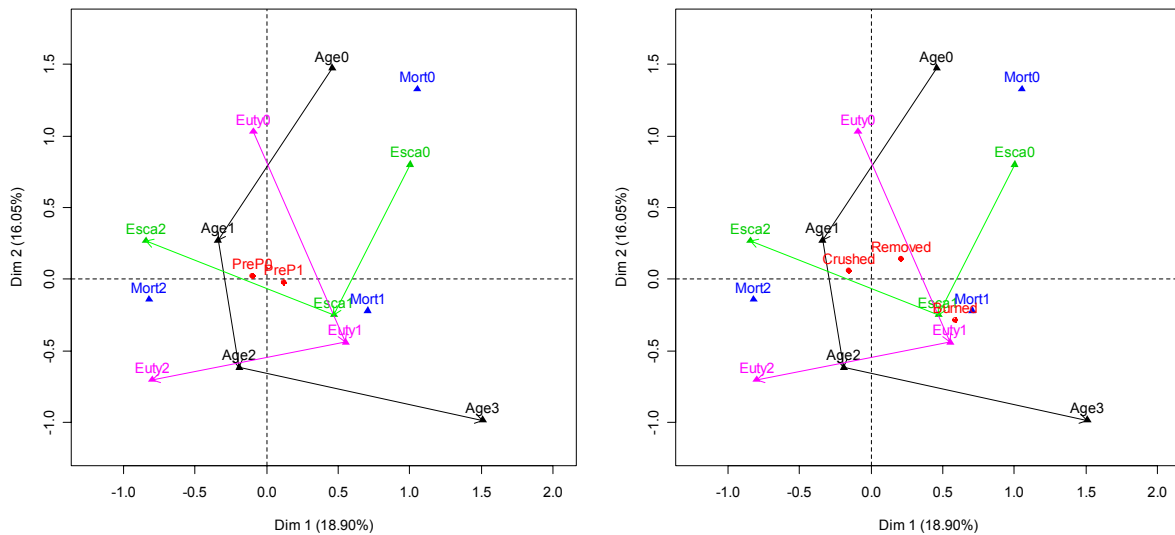


FIGURE 8

Display on the first and second principal axes of the MCA of the two supplementary variables the pre-pruning, on the left, and the management of pruning residues, on the right.

The main results are the following:

- the high mortality rates –Mort2– are associated with high incidence levels of the two trunk diseases –Esca2 and Euty2–,
- the high incidence levels of eutypa dieback are associated with old grapevines –from 25 to 40 years old– and esca decline/black dead arm are associated with young grapevines –from 15 to 25 years old–,
- the incidences seem to evolve in opposite ways: if the level of incidence of one of the two diseases is high then the level of incidence of the other one will be low,
- some vine-growing regions or vine varieties are linked to high level of vulnerabilities to the two diseases, e.g. Poitou-Charentes and Euty2 or Poulsard and Esca2,
- the use of sodium arsenite does not seem to account for significant changes of the evolution of the diseases,
- the association of burning the pruning residues and medium levels of incidence of the two diseases –Euty1 and Esca1–, is most probably due to the link between the vine-growing regions and the vine varieties and the fact that the use of the burning technique to dispose of pruning residues is mainly used in Bourgogne.

## 5 Multiple Factor Analysis for Mixed Data

We just made a MCA analysis on the data and therefore we had to turn the quantitative variables –the age of the parcel, the rates of incidence and the rate of mortality– into qualitative ones by cutting the range of values into three classes or four classes. Since this step was handled with care this should have enabled us to spot even non linear associations between the variables we analysed. Yet, it is also possible to perform a multiple factor analysis for mixed data (FAMD) (Escofier, 1979, Pagès 2002, Pagès 2004), i.e. for a dataset mixing quantitative and qualitative active variables.

There exists two advantages and one possible drawback to apply this method. The first advantage is to set the influence of any of the quantitative (4) or the qualitative (1) variables which participate to the analysis as active variables to the same level. Indeed during the process of construction of the directions of maximal inertia the influence of all the variables, quantitative as well as qualitative, will be balanced (p.97 Pagès 2004) and therefore will not depend on the number of the levels of the qualitative variable. The second advantage, following the recommendations (p.94) of the article written by Pagès (2004), is to not encode the continuous variables (here, there are four) as factors with respect one qualitative variable (vine-growing region, vine variety, number of times the sodium arsenite was used between 1999 and 2001, rootstock, pre-pruning, management of pruning residues, pruning method). The drawback is that we will not be able to spot any non linear association between the quantitative variables.

The reader may not be familiar with such techniques which we will now briefly survey following the article written by Pagès (2004).

### 5.1 Describing the method

#### 5.1.1 Data and notations

Let us consider  $I$  units. Every unit  $i$  has a weight  $w_i$  such that  $\sum_{i=1}^I w_i = 1$ . These units are described by:

- $Q$  quantitative variables; these variables are always supposed to have zero mean and are scaled to unit variance. The use of standardized variables is mandatory since we use both quantitative and qualitative active variables.
- $J$  qualitative variables; the  $j^{\text{th}}$  variable has  $K_j$  levels, the set of all the levels of the  $J$  qualitative is of size  $K = \sum_{j=1}^J K_j$ ; we denote by  $w_{k_j}$  the proportion of the units that has the level  $k_j$ .

The total number,  $T$ , of quantitative variables and of indicator functions equals to  $Q + K$ .  $x_{iq}$  denotes the value of the unit  $i$  for the  $q^{\text{th}}$  variable,  $q = 1 \dots Q$ ,  $x_{ij}$  the level of the unit  $i$  for the  $j^{\text{th}}$  variable and  $x_{ik_j}$  is equal to 1 if  $i$  has the level  $k_j$  of the variable  $j$  and else  $x_{ik_j}$  is equal to zero.

### 5.1.2 Displaying the variables in $R^I$

Let us consider  $R^I$  the space of functions defined on  $I$ . The matrix  $D$  defined by the weights of the units provides this space with a diagonal metric. More precisely we have  $D$  equal to:

$$D(i, j) = \begin{cases} 0 & \text{if } i \neq j \\ w_i & \text{if } i = j \end{cases}$$

As in a normed principal component analysis (PCA), the variables will be represented by vectors whose lengths are equal to 1.

As in a MCA, the  $j^{\text{th}}$  variable is represented by the set  $N_j$  of  $K_j$  vectors representing the  $K_j$  centered indicator functions of the levels of the  $j^{\text{th}}$  variable. This set of vectors spans the vector space  $E_j$ , whose dimension equals to  $K_j - 1$ , of the functions that are centered and constant on every set of the partition defined by the levels of the  $j^{\text{th}}$  variable. In order that  $N_j$  inherits of the same properties in matter of inertia than in a MCA, we have to set the weight of the  $k_j^{\text{th}}$  indicator function to  $1/w_{k_j}$ . Virtually this weight should be set to  $1/(Q \cdot w_{k_j})$  to have exactly the same inertia than in a MCA. Indeed in a MCA the inertias are averaged by the number of variables. Yet using these weights would lead to an inadequate property –averaging– since for the factorial analysis of mixed data the qualitative variables are compared to quantitative ones whose inertias are not averaged. Some PCA softwares are not designed to assign weights to columns. As a consequence we prefer to divide the values of the  $k_j^{\text{th}}$  indicator functions by  $\sqrt{w_{k_j}}$ .

### 5.1.3 Displaying the units in $R^T$

The dimension of the vector space  $R^T$  equals to the sum of the number of quantitative variables,  $Q$ , and of the number of indicator functions,  $K$ . We provide this vector space with the usual Euclidean metric. The distance between two units  $i$  and  $j$  is then given by the following formula:

$$d^2(i, l) = \sum_{q=Q} (x_{iq} - x_{lq})^2 + \sum_{j \in J} \sum_{k \in K_j} \frac{1}{w_{k_j}} (x_{ik_j} - x_{lk_j})^2,$$

with as a sub case the distance between a unit and the gravity center of the all the units. This gravity centre is located at  $O$ , the origin of the vector space  $R^T$ , as soon as the variables are centered. This is an assumption we made on the quantitative variables at the very beginning of this section. As to the indicator functions that were derived from the qualitative variables and divided by  $\sqrt{w_{k_j}}$  in order to assign adequate weights to the columns, the mean of the  $k_j^{\text{th}}$  column is equal to  $\sqrt{w_{k_j}}$ . These renormalizations lead to the following formulas:

$$d^2(i, O) = \sum_{q \in Q} x_{iq}^2 + \sum_{j \in J} \sum_{k \in K_j} \left( \frac{x_{ik_j}}{\sqrt{w_{k_j}}} - \sqrt{w_{k_j}} \right)^2 = \sum_{q \in Q} x_{iq}^2 + \sum_{j \in J} \frac{1 - w_{j(i)}}{w_{j(i)}},$$

with  $j(i)$  the level that the  $j^{\text{th}}$  variable takes for the  $i^{\text{th}}$  unit and  $w_{j(i)}$  the corresponding proportion.

### 5.1.4 Graphical outputs

As in any factor analysis we display:

- The units by their projection on the inertia axes. We denote by  $F_s(i)$  the projection of the  $i^{\text{th}}$  unit on the axis  $F_s$  of order  $s$ .
- The quantitative variables using their correlation coefficients with the axes  $F_s$ .
- The levels of the  $j^{\text{th}}$  qualitative variable using the gravity centres of the corresponding units. We denote by  $F_s(k_j)$  the projection on the axis  $F_s$  of order  $s$  of the centre of gravity of the units featuring the  $k^{\text{th}}$  level of the  $j^{\text{th}}$  qualitative variable.

## 5.2 Applying FAMD to the data generated by the National Grapevine Wood Diseases Survey

In order to be able to put side by side the results we will compute with those we got from the MCA, we will proceed in somewhat a similar way than what we did when using the MCA. We first build the factorial axes using the four main variables. The first four active variables will remain the same and are quantitative ones: the incidence of eutypa dieback, the incidence of esca/BDA, the mortality of grapevine trunks and the age of the parcel. The fifth active variable is one qualitative variable chosen among all those we decided to include in the analysis and that were, up to now, used as supplementary variables: vine-growing region, vine variety, number of use of the sodium arsenite, rootstock, pre-pruning, pruning residues, pruning method.

### 5.2.1 Vine-growing regions and vine varieties

Since vine-growing regions and vine varieties are two strongly dependant variables we will analyse them together, Figure 9 up and down.

A first point is that the grapevine mortality is close to being proportional to the sum of the vectors associated with the two diseases. A second point is that the diseases are opposed one to each other, which agrees with the results we got with the MCA: the two diseases are likely to not completely –or not at all– evolve the same way. The age of the parcel is still strongly linked with the second factor axis which is what we found out using the MCA.

We spot again, as with the MCA, an association between esca/BDA and the vine-growing region Jura or between Poitou-Charentes and eutypa. As to the associations between the vine varieties and the diseases, the Poulsard, the Savagnin and the Trousseau are close to the esca/BDA, which are the same results as with the MCA.

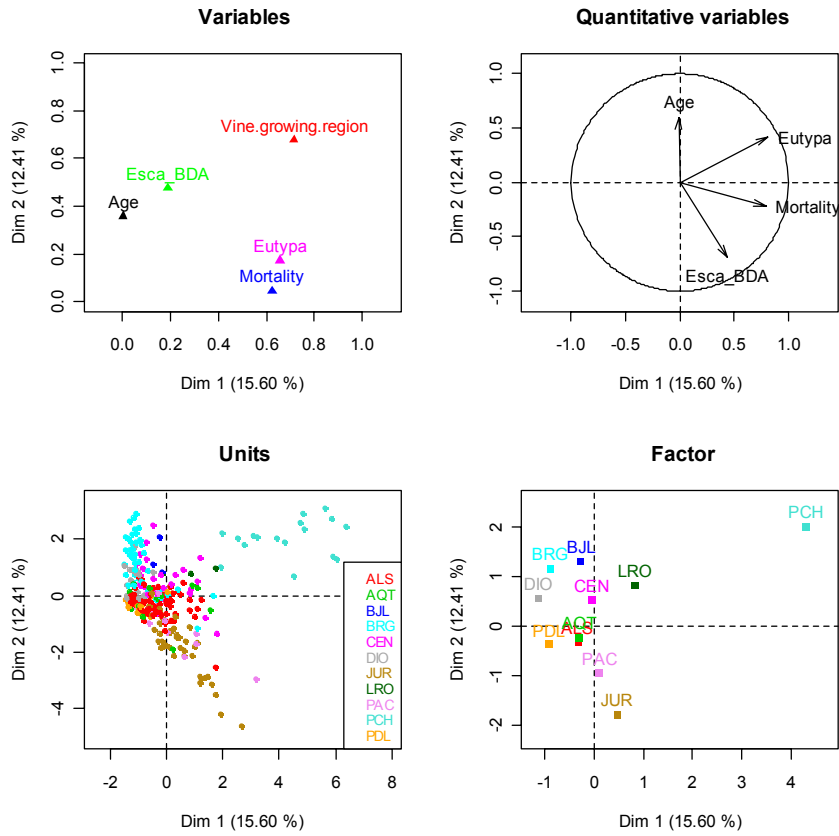
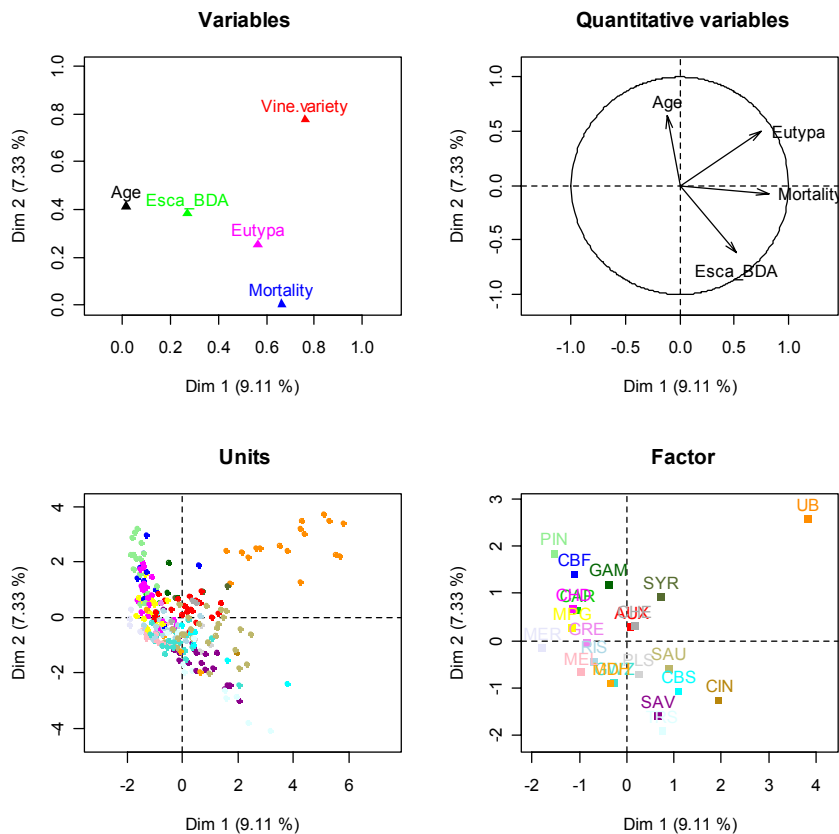


FIGURE 9

*Display on the first and second principal axes of the FAMD with the two qualitative variables the vine-growing region, on top, and the vine variety, on bottom.*



## 5.2.2 Sodium arsenite

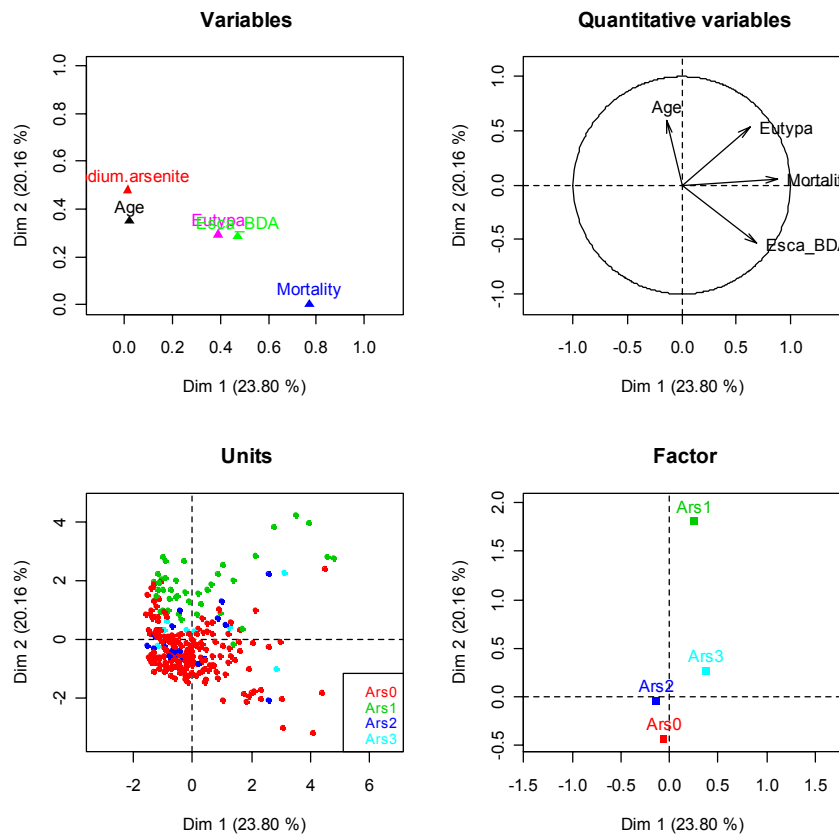


FIGURE 10

*Display on the first and second principal axes of the FAMD with the qualitative variable the number of use of the sodium arsenite.*

The association between diseases and mortality is still strong as well as the location of the variable age of the parcel along the second factor axis. There is an opposition between the rise of the mortality of the grapevines and the non-use or use twice of sodium arsenite as well as a very close location between high incidence rates of eutypa dieback and the three times repeated use of sodium arsenite. Yet there are only several parcels that were cured three times during the period from 1999 to 2001 and there is no evidence that the use of sodium arsenite accounts for a decrease of the incidence rate of eutypa dieback. This result is to be confirmed by other experiments. Another way to understand this relationship is that parcels with high incidence rates of eutypa dieback were treated every year by vine growers.

## 5.2.3 Pre-pruning and management of pruning residues

The pre-pruning and the management of pruning residues, two disease prevention policies, seemed to have no effect on the incidence rates of the two diseases and on the mortality rate of the grapevines when analysed with the MCA. Is it still the case with the FAMD; see Figure 11.

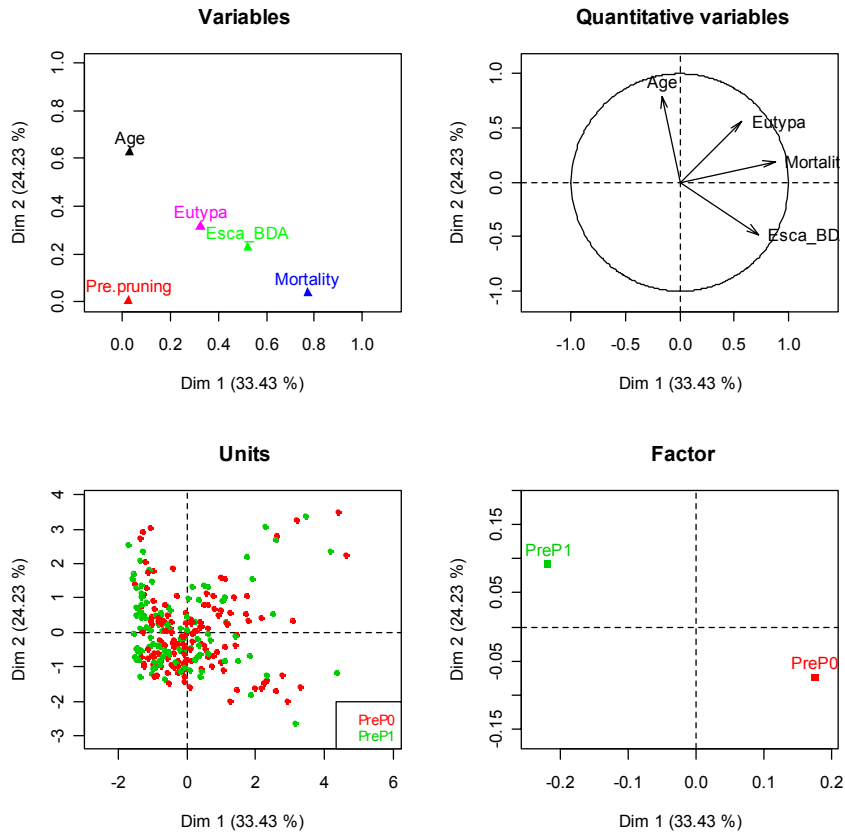
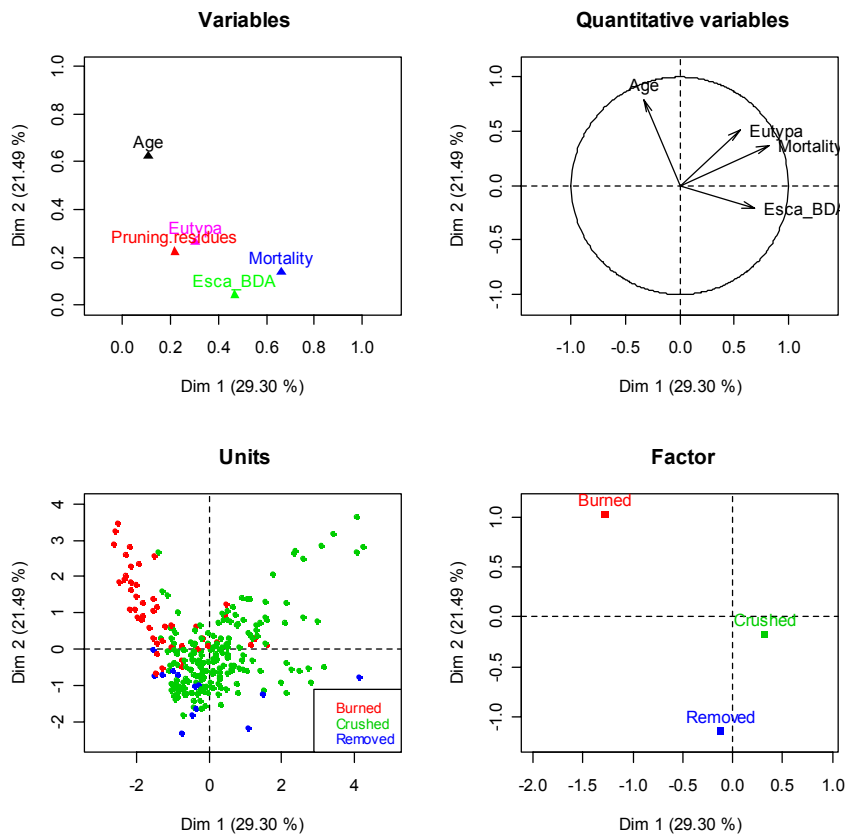


FIGURE 11

*Display on the first and second principal axes of the FAMD with the qualitative variable the pre-pruning, on top, and the management of pruning residues, on bottom.*



First of all, we notice the same association pattern between the incidence of eutypa dieback, the incidence of esca/BDA, the mortality of the grapevines and the age of the parcel as those we spotted with the MCA: the higher the incidence of the eutypa dieback and of the esca/BDA, the higher the mortality rate.

We lay the stress on the fact that although there seems to be an opposition between the mortality of the grapevines or the esca/BDA and the pre-pruning of the wine (“PreP1”) which was not spotted by the MCA, this result is not backed up by the plot of the association of the the PreP factor with the two first factor axes since these accounts for almost none of the variability of PreP factor.

Burning the pruning residues is opposed to the incidence of the diseases and to the mortality rate. As to the removal of the pruning residues it is more difficult to state conclusions since the number of parcels where it was used is very small (7 out a sample of 191 parcels).

## 6 Multi-tables correspondence analysis

The multi-tables correspondence analysis (CA) –also known as  $K$ -tables correspondence analysis– (Bry 1996, Escofier and Pagès 1998, Cazes 2004) will be used in order to study the yearly evolution of the incidences rates of the two diseases and of the mortality of the grapevines. Indeed up to now, our analyses only focused on the mean values of these three variables over the three years: 2003, 2004 and 2005. As a consequence the time factor was not taken into account. The multi-tables correspondence analysis will enable us to check whether or not one of the years has a high impact on the average association patterns we found before. It was a high concern since the summer 2003 was very hot in France.

### 6.1 Description of the method

This statistical tool was applied to the data tables of the three years 2003, 2004 and 2005 for the same units and variables. We now describe more precisely the way we used the multi-tables correspondence analysis. We begin with the analysis not taking time into account:

- First we bound together in the same table the data for the incidence rates of the two diseases and of the mortality rate for the three years 2003, 2004 and 2005. We got a table with 321 rows –one for each of the  $3 \times 107$  units– and three –EUTY\_Tot, ESCA\_Tot and MORT\_Tot– columns. These three new variables will be the active ones. We then computed the Burt table  $B_{Tot}$  for this table which is the sum over the three years of the yearly Burt tables 2003, 2004 and 2005,  $B_{2003}$ ,  $B_{2004}$  et  $B_{2005}$ .
- Each of the yearly table is made of 107 rows and 3 columns –EUTY\_0X, ESCA\_0X and MORT\_0X, where is equal to 3 for the year 2003, 4 for the year 2004 and 5 for the year 2005–.
- We laid on the right of the table  $B_{Tot}$  the three yearly Burt tables  $B_{2003}$ ,  $B_{2004}$  and  $B_{2005}$  of the incidence of diseases and the mortality rate, each one with 13 rows and 13 columns. The columns of the three Burt tables  $B_{2003}$ ,  $B_{2004}$  and  $B_{2005}$  will be used as supplementary variables in the upcoming correspondence analysis.
- We laid on the bottom of the table  $B_{Tot}$  the three yearly Burt tables  $B_{2003}$ ,  $B_{2004}$  and  $B_{2005}$  of the incidence of diseases and the mortality rate, each one with 13 rows and



13 columns. The rows of the three Burt tables  $B_{2003}$ ,  $B_{2004}$  and  $B_{2005}$  will be used as supplementary units in the upcoming correspondence analysis.

- Then we completed the empty cells of this global table  $B$  with zeros.
- Finally we performed the correspondence analysis of the table  $B$  as described in Table 6 : the 9 variables EUTY\_Tot.0, EUTY\_Tot.1, EUTY\_Tot.2, ESCA\_Tot.0, ESCA\_Tot.1, ESCA\_Tot.2, MORT\_Tot.0, MORT\_Tot.1 and MORT\_Tot.2 were active variables and the 27 variables EUTY\_03.0, EUTY\_03.1, EUTY\_03.2, EUTY\_04.0, EUTY\_04.2, EUTY\_04.3, EUTY\_05.0, EUTY\_05.1, EUTY\_05.2, ESCA\_03.0, ESCA\_03.1, ESCA\_03.2, ESCA\_04.0, ESCA\_04.1, ESCA\_04.2, ESCA\_05.0, ESCA\_05.1, ESCA\_05.2, MORT\_03.0, MORT\_03.1, MORT\_03.2, MORT\_04.0, MORT\_04.1, MORT\_04.2, MORT\_05.0, MORT\_05.1 and MORT\_05.2 were supplementary ones.

	Actives Variables	Supplementary Variables		
Active Units	$B_{Tot}$	$B_{2003}$	$B_{2004}$	$B_{2005}$
Supplementary Units	$B_{2003}$	0	0	0
	$B_{2004}$	0	0	0
	$B_{2005}$	0	0	0

TABLE 6  
*How to perform correspondence analysis of the table  $B$ .*

We then added the age of the parcel as an active variable and followed the same scheme of analysis.

## 6.2 Applying multi-tables correspondence analysis to the data generated by the National Grapevine Wood Diseases Survey

We carried out two analyses: the first one does not take into account the age of the parcel and the second one does.

### 6.2.1 Ignoring the age of the parcel

Axis	Singular Eigenvalue	Percentage of inertia	
		Individual	Cumulated
1	0.495	33.326	33.326
2	0.420	23.944	57.269
3	0.347	16.387	73.657
4	0.323	14.178	87.835
5	0.250	8.498	96.333
6	0.164	3.667	100.000

TABLE 7  
*Eigenvalues and percentages of inertia with respect to the principal axes of the  $K$ -tables  $CA$ .*

It is legitimate to restrict our analyses to the four principal axes since these axes account for 88 % of the total inertia.

	<i>Coord. Dim.1</i>	<i>Coord. Dim.2</i>	<i>Coord. Dim.3</i>	<i>Coord. Dim.4</i>	<i>Inertia Dim.1</i>	<i>Cosine<sup>2</sup> Dim.1</i>	<i>Inertia Dim.2</i>	<i>Cosine<sup>2</sup> Dim.2</i>	<i>Inertia Dim.3</i>	<i>Cosine<sup>2</sup> Dim.3</i>	<i>Inertia Dim.4</i>	<i>Cosine<sup>2</sup> Dim.4</i>
EUTY_Tot.0	0.118	0.324	-0.210	-0.393	0.010	0.043	0.103	0.322	0.063	0.135	0.255	0.473
EUTY_Tot.1	0.180	-0.402	-0.318	0.763	0.012	0.035	0.083	0.177	0.076	0.111	0.503	0.637
EUTY_Tot.2	-0.519	-0.277	0.919	-0.017	0.077	0.204	0.031	0.058	0.494	0.641	0.000	0.000
ESCA_Tot.0	0.794	0.562	0.153	0.398	0.176	0.441	0.123	0.221	0.013	0.016	0.104	0.111
ESCA_Tot.1	0.113	-0.475	0.153	-0.183	0.009	0.036	0.214	0.634	0.032	0.066	0.054	0.095
ESCA_Tot.2	-0.751	0.419	-0.369	0.035	0.224	0.591	0.097	0.185	0.110	0.143	0.001	0.001
MORT_Tot.0	0.932	0.240	0.197	-0.088	0.316	0.786	0.029	0.052	0.029	0.035	0.007	0.007
MORT_Tot.1	-0.064	-0.619	-0.400	-0.167	0.002	0.006	0.234	0.524	0.143	0.219	0.029	0.038
MORT_Tot.2	-0.561	0.334	0.188	0.190	0.174	0.558	0.086	0.198	0.040	0.063	0.047	0.064
EUTY_03.0	0.510	0.254	-0.076	-0.389		0.175		0.043		0.004		0.102
EUTY_03.1	0.235	-0.545	-0.322	0.690		0.028		0.154		0.054		0.246
EUTY_03.2	-0.253	-0.293	0.967	-0.005		0.028		0.038		0.414		0.000
ESCA_03.0	0.749	0.621	0.187	0.310		0.236		0.162		0.015		0.040
ESCA_03.1	0.198	-0.551	0.008	-0.124		0.028		0.220		0.000		0.011
ESCA_03.2	-0.615	0.104	-0.490	0.354		0.194		0.005		0.123		0.064
MORT_03.0	0.938	0.256	0.208	-0.056		0.425		0.032		0.021		0.002
MORT_03.1	0.051	-0.750	-0.385	-0.070		0.001		0.314		0.083		0.003
MORT_03.2	-0.252	0.249	0.303	0.386		0.041		0.040		0.060		0.097

	<b>Coord. Dim.1</b>	<b>Coord. Dim.2</b>	<b>Coord. Dim.3</b>	<b>Coord. Dim.4</b>	<b>Inertia Dim.1</b>	<b>Cosine<sup>2</sup> Dim.1</b>	<b>Inertia Dim.2</b>	<b>Cosine<sup>2</sup> Dim.2</b>	<b>Inertia Dim.3</b>	<b>Cosine<sup>2</sup> Dim.3</b>	<b>Inertia Dim.4</b>	<b>Cosine<sup>2</sup> Dim.4</b>
EUTY_04.0	-0.029	0.307	-0.280	-0.391		0.001		0.073		0.060		0.118
EUTY_04.1	0.101	-0.251	-0.324	0.855		0.005		0.033		0.056		0.388
EUTY_04.2	-0.590	-0.207	0.896	0.017		0.152		0.019		0.350		0.000
ESCA_04.0	0.809	0.585	0.175	0.381		0.271		0.142		0.013		0.060
ESCA_04.1	0.030	-0.456	0.122	-0.322		0.001		0.155		0.011		0.077
ESCA_04.2	-0.780	0.477	-0.356	-0.028		0.308		0.115		0.064		0.000
MORT_04.0	1.011	0.386	0.218	-0.078		0.456		0.066		0.021		0.003
MORT_04.1	-0.091	-0.517	-0.431	-0.352		0.005		0.157		0.109		0.073
MORT_04.2	-0.616	0.418	0.120	0.128		0.238		0.110		0.009		0.010
EUTY_05.0	-0.091	0.418	-0.254	-0.400		0.006		0.125		0.046		0.114
EUTY_05.1	0.162	-0.318	-0.308	0.794		0.014		0.054		0.051		0.339
EUTY_05.2	-0.633	-0.321	0.905	-0.050		0.170		0.044		0.347		0.001
ESCA_05.0	0.895	0.360	0.020	0.670		0.309		0.050		0.000		0.173
ESCA_05.1	0.083	-0.401	0.356	-0.132		0.005		0.118		0.093		0.013
ESCA_05.2	-0.758	0.446	-0.350	0.011		0.298		0.103		0.064		0.000
MORT_05.0	0.860	0.104	0.166	-0.139		0.367		0.005		0.014		0.010
MORT_05.1	-0.195	-0.561	-0.381	-0.070		0.022		0.182		0.084		0.003
MORT_05.2	-0.679	0.299	0.190	0.141		0.284		0.055		0.022		0.012

TABLE 8

*Coordinates, contributions and square cosine of the levels of the active variables for the first four principal axes of the K-tables CA without taking the age of the parcel into account.*

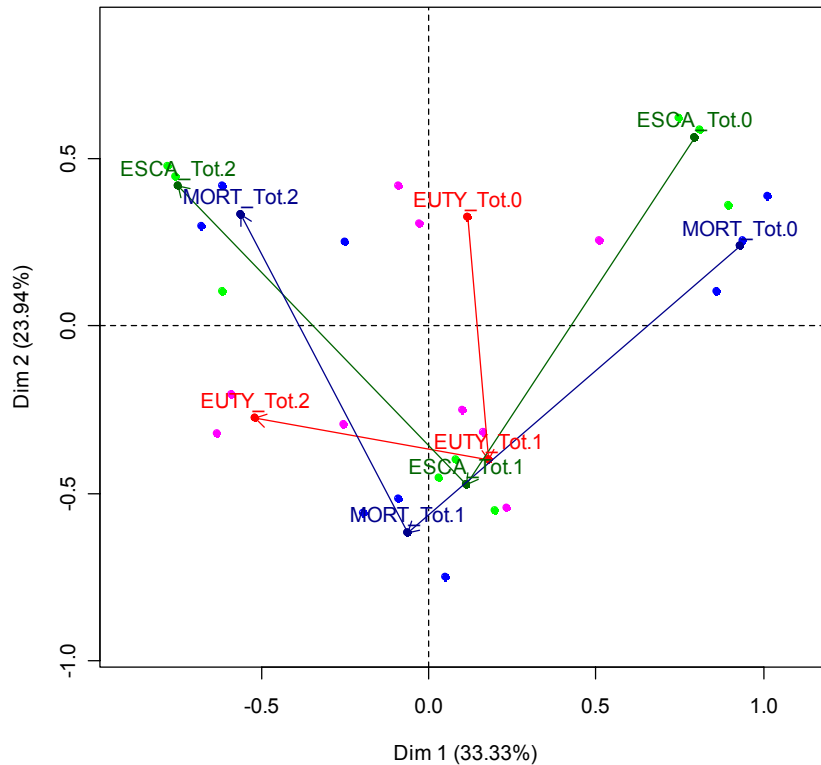


FIGURE 12

*Display on the first and second principal axes of the K-tables CA of the means per year without taking into account the age of the parcel.*

The number of points on the Figure 12 is so high that we decide to split it in several sub-diagrams for the sake of readability, see Figure 13.

For the esca/BDA the levels of the three years are close which means a stable pattern for the incidence rates through the three years of the survey.

For the eutypa dieback and the mortality, the two years 2004 and 2005 are close and thus for all the levels of the variable Euty and Mort whereas the year 2003 lies apart. This seems to highlight a stable expression of the symptoms and of the mortality in 2004 and 2005 after a variation between 2003 and 2004. The mean incidence for eutypa-dieback was: 3.5% in 2003, 3.5% in 2004, 3.6% in 2005. As a consequence the multi-tables correspondence analysis spotted differences in the incidence patterns of eutypa dieback whilst the mean values of incidences were close to be equal. Yet the age of the parcel was not included in this analysis. This may have resulted in misleading results. It is what we will check in the following subsection.

The analysis of the second factor plane highlights a stable opposition through the time for the increase of the two diseases.

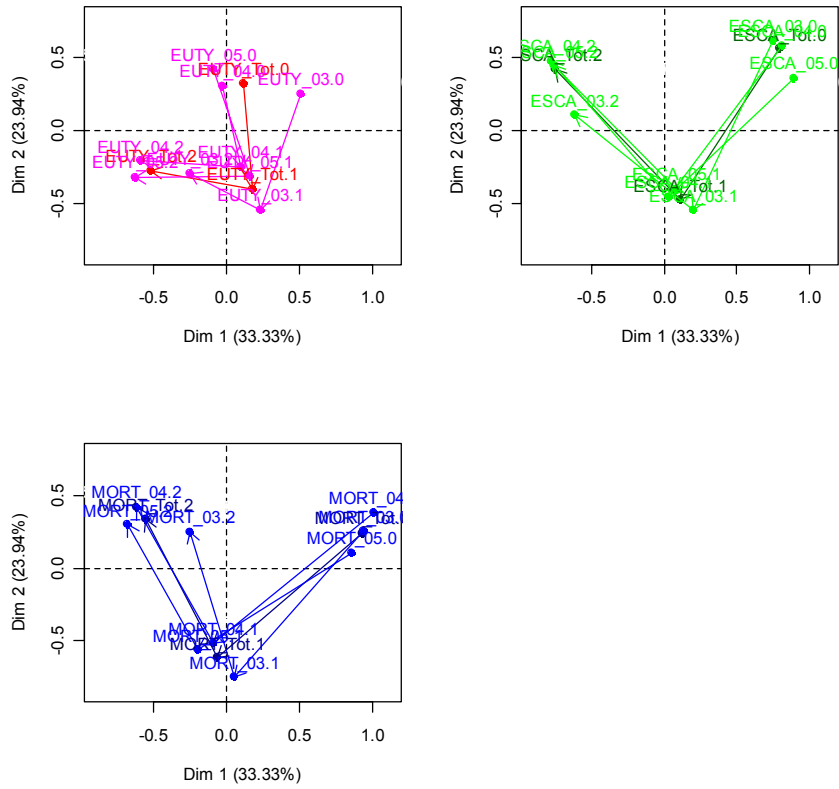
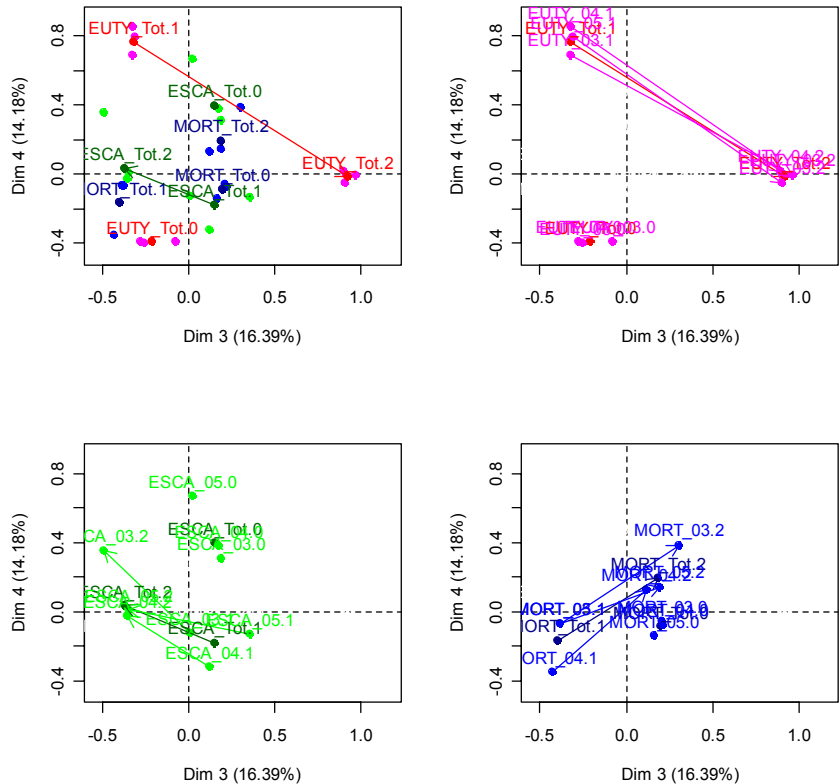


FIGURE 13 (On top) and 14 (On bottom)

*Display on the first, second, third and fourth principal axes of the K-tables CA of the means per year without taking into account the age of the parcel for the eutypa dieback disease only.*



## 6.2.2 Taking the age of the parcel into account

We added the age of the parcel as an active variable, built the global Burt table  $B^{age}$  using the three yearly ones  $B_{2003}^{age}$ ,  $B_{2004}^{age}$  and  $B_{2005}^{age}$  and made the CA of the global Burt table  $B^{age}$  using the 13 variables AGE.0, AGE.1, AGE.2, AGE. 3, EUTY\_Tot.0, EUTY\_Tot.1, EUTY\_Tot.2, ESCA\_Tot.0, ESCA\_Tot.1, ESCA\_Tot.2, MORT\_Tot.0, MORT\_Tot.1 and MORT\_Tot.2 as active variables and the 27 variables EUTY\_03.0, EUTY\_03.1, EUTY\_03.2, EUTY\_04.0, EUTY\_04.1, EUTY\_04.2, EUTY\_05.0, EUTY\_05.1, EUTY\_05.2, ESCA\_03.0, ESCA\_03.1, ESCA\_03.2, ESCA\_04.0, ESCA\_04.1, ESCA\_04.2, ESCA\_05.0, ESCA\_05.1, ESCA\_05.2, MORT\_03.0, MORT\_03.1, MORT\_03.2, MORT\_04.0, MORT\_04.1, MORT\_04.2, MORT\_05.0, MORT\_05.1 and MORT\_05.2 as supplementary variables. The high number of points on the Figure 15 lead us to split it in several sub-diagrams (Figure 16).

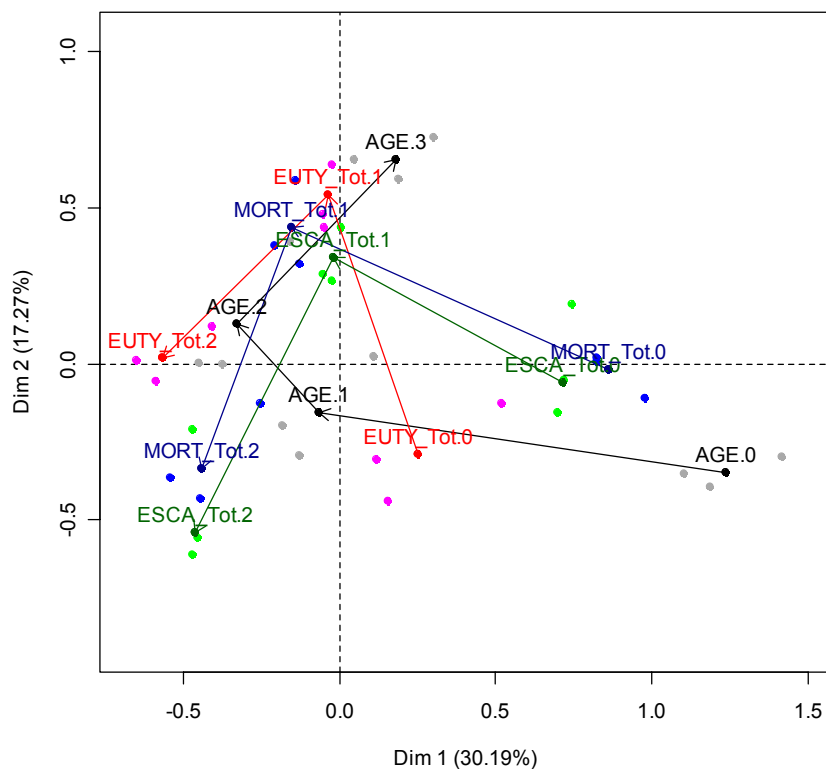


FIGURE 15

*Display on the first and second principal axes of the K-tables CA of the means per year taking into account the age of the parcel.*

Axis	Singular Eigenvalue	Percentage of inertia		Axis	Singular Eigenvalue	Percentage of inertia	
		Individual	Cumulated			Individual	Individual
1	0.439	30.190	30.190	6	0.217	7.335	88.629
2	0.332	17.265	47.456	7	0.183	5.225	93.854
3	0.289	13.043	60.498	8	0.166	4.301	98.155
4	0.269	11.322	71.821	9	0.109	1.845	100.000
5	0.246	9.473	81.294				

TABLE 9

*Eigenvalues and percentages of inertia with respect to the principal axes of the K-tables CA.*

The values of the inertia led us again to study only the first four axes that accounts for about 72 % of the total inertia of the whole dataset. We lay the stress on the fact that the fifth axe could be interesting to study too.

	<i>Coord. Dim.1</i>	<i>Coord. Dim.2</i>	<i>Coord. Dim.3</i>	<i>Coord. Dim.4</i>	<i>Inertia Dim.1</i>	<i>Cosine<sup>2</sup> Dim.1</i>	<i>Inertia Dim.2</i>	<i>Cosine<sup>2</sup> Dim.2</i>	<i>Inertia Dim.3</i>	<i>Cosine<sup>2</sup> Dim.3</i>	<i>Inertia Dim.4</i>	<i>Cosine<sup>2</sup> Dim.4</i>
AGE.0	1.236	-0.348	-0.011	-0.012	0.222	0.633	0.031	0.050	0.000	0.000	0.000	0.000
AGE.1	-0.067	-0.156	-0.364	-0.161	0.002	0.013	0.023	0.069	0.374	0.374	0.038	0.073
AGE.2	-0.328	0.130	0.213	0.292	0.053	0.245	0.015	0.038	0.103	0.103	0.113	0.194
AGE.3	0.180	0.656	0.866	-0.509	0.004	0.012	0.082	0.152	0.266	0.266	0.075	0.092
EUTY_Tot.0	0.253	-0.290	-0.046	-0.219	0.043	0.243	0.099	0.321	0.008	0.008	0.086	0.183
EUTY_Tot.1	-0.039	0.540	0.355	-0.050	0.001	0.002	0.179	0.412	0.179	0.179	0.002	0.004
EUTY_Tot.2	-0.567	0.018	-0.343	0.599	0.088	0.311	0.000	0.000	0.114	0.114	0.262	0.347
ESCA_Tot.0	0.714	-0.059	0.460	0.383	0.135	0.453	0.002	0.003	0.188	0.188	0.104	0.131
ESCA_Tot.1	-0.022	0.339	-0.315	0.022	0.000	0.002	0.131	0.428	0.368	0.368	0.001	0.002
ESCA_Tot.2	-0.464	-0.540	0.216	-0.306	0.081	0.296	0.193	0.402	0.064	0.064	0.095	0.129
MORT_Tot.0	0.861	-0.017	-0.160	0.224	0.257	0.802	0.000	0.000	0.028	0.028	0.046	0.054
MORT_Tot.1	-0.155	0.439	-0.132	-0.365	0.010	0.043	0.141	0.349	0.032	0.032	0.149	0.242
MORT_Tot.2	-0.442	-0.338	0.210	0.143	0.103	0.440	0.105	0.256	0.099	0.099	0.029	0.046
EUTY_03.0	1.417	-0.296	0.076	0.166		0.538		0.024		0.002		0.007
EUTY_03.1	0.110	0.025	-0.383	-0.145		0.009		0.000		0.105		0.015
EUTY_03.2	-0.158	0.389	0.151	0.363		0.016		0.099		0.015		0.087
ESCA_03.0	0.303	0.725	0.881	-0.491		0.024		0.135		0.199		0.062
ESCA_03.1	0.518	-0.126	-0.115	-0.084		0.189		0.011		0.009		0.005
ESCA_03.2	-0.023	0.639	0.253	-0.080		0.000		0.234		0.037		0.004
MORT_03.0	-0.408	0.120	-0.330	0.736		0.081		0.007		0.053		0.263
MORT_03.1	0.699	-0.155	0.402	0.408		0.232		0.011		0.077		0.079
MORT_03.2	0.005	0.436	-0.285	-0.049		0.000		0.145		0.062		0.002

	<b>Coord. Dim.1</b>	<b>Coord. Dim.2</b>	<b>Coord. Dim.3</b>	<b>Coord. Dim.4</b>	<b>Inertia Dim.1</b>	<b>Cosine<sup>2</sup> Dim.1</b>	<b>Inertia Dim.2</b>	<b>Cosine<sup>2</sup> Dim.2</b>	<b>Inertia Dim.3</b>	<b>Cosine<sup>2</sup> Dim.3</b>	<b>Inertia Dim.4</b>	<b>Cosine<sup>2</sup> Dim.4</b>
EUTY_04.0	-0.471	-0.212	0.226	-0.403		0.123		0.025		0.028		0.090
EUTY_04.1	0.822	0.009	-0.114	0.245		0.359		0.000		0.007		0.032
EUTY_04.2	-0.141	0.586	-0.150	-0.301		0.012		0.210		0.014		0.055
ESCA_04.0	-0.255	-0.128	0.281	0.298		0.045		0.011		0.055		0.062
ESCA_04.1	1.105	-0.353	-0.004	-0.074		0.376		0.038		0.000		0.002
ESCA_04.2	-0.128	-0.296	-0.337	-0.204		0.012		0.062		0.081		0.030
MORT_04.0	-0.377	-0.001	0.235	0.200		0.097		0.000		0.038		0.027
MORT_04.1	0.188	0.590	0.888	-0.473		0.009		0.090		0.204		0.058
MORT_04.2	0.118	-0.305	-0.012	-0.275		0.011		0.074		0.000		0.060
EUTY_05.0	-0.048	0.439	0.513	-0.008		0.001		0.111		0.152		0.000
EUTY_05.1	-0.590	-0.057	-0.322	0.544		0.170		0.002		0.051		0.145
EUTY_05.2	0.718	-0.051	0.466	0.349		0.240		0.001		0.101		0.057
ESCA_05.0	-0.054	0.287	-0.324	-0.025		0.002		0.064		0.082		0.000
ESCA_05.1	-0.471	-0.610	0.189	-0.307		0.125		0.210		0.020		0.053
ESCA_05.2	0.978	-0.112	-0.117	0.260		0.453		0.006		0.006		0.032
MORT_05.0	-0.127	0.322	-0.183	-0.441		0.010		0.066		0.021		0.124
MORT_05.1	-0.445	-0.430	0.229	0.086		0.133		0.124		0.035		0.005
MORT_05.2	1.187	-0.395	-0.104	-0.128		0.406		0.045		0.003		0.005

TABLE 10

*Coordinates, contributions and square cosine of the levels of the active variables for the first four principal axes of the K-tables CA taking the age of the parcel into account.*



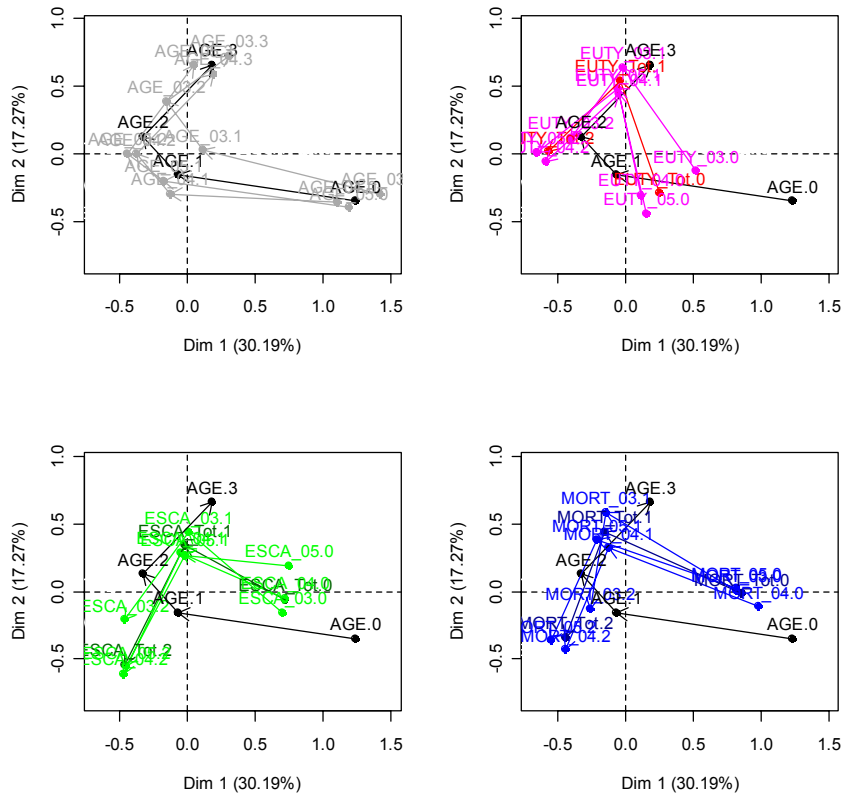
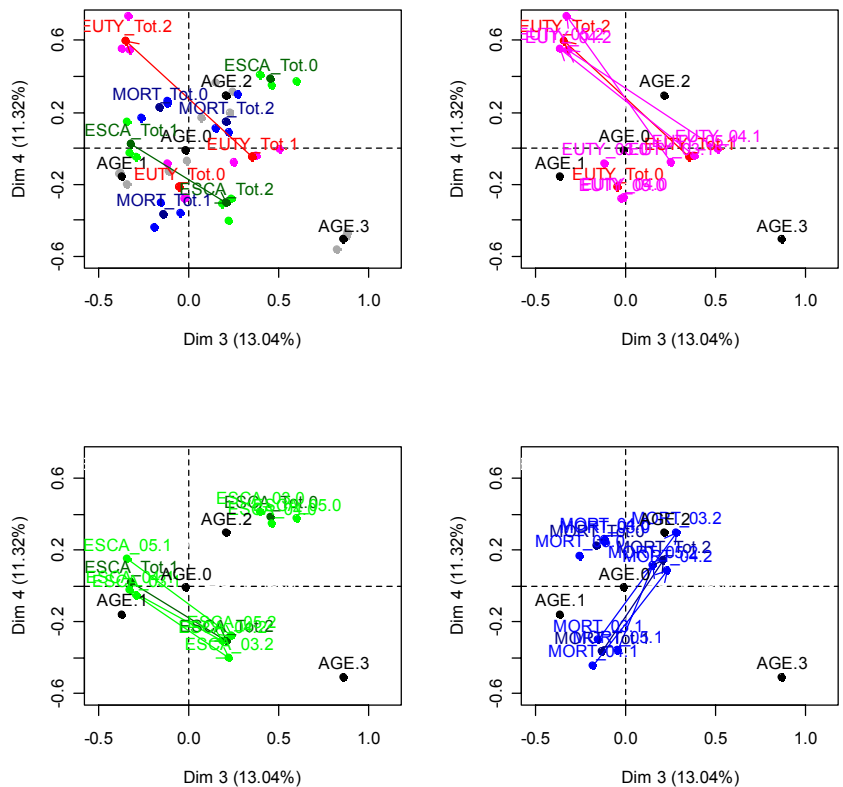


FIGURE 16

Display on the first, second, third and fourth principal axes of the K-tables CA of the means per year taking into account the age of the parcel.



For all the factors and for any given level of these factors, the annual points of these levels lie close and the pattern they draw remain somewhat similar for the three years of the study 2003, 2004 and 2005. We remark (see Figure 16) that the path of the mortality rate stays stable during the three years while the paths of the two incidence rates change slightly during this period. These variations could not be spotted by only looking at the incidence rates which were almost constant for the three years –2003, 2004 and 2005–; for instance the mean incidences, for the eutypa were 3.5 % in 2003, 3.5 % in 2004 and 3.6 % in 2005.

The analysis of the second factor plane highlights a steady opposition through the time for the increase of the two diseases.

Other procedures of data analysis were used to study this dataset, namely the Multiple Factor Analysis (MFA) (Escoufier and Pagès 1998) and the ACT–STATIS method (Lavit, Escoufier, Sabatier and Traissac 1994), using the FactoMineR (Husson, Lê and Mazet 2007) and the ade4 (Chessel, Dufour and Thioulouse 2004) packages for R (Team 2007). The results we got this way were similar to those of the  $K$ –tables CA.

## 7 Conclusion

This case study highlights the interest of the joint use of several statistical procedures. Its main goal is to provide an example of use of adequate tools to analyse quantitative, qualitative and dynamic data. Moreover from a biological point of view, the associations between the variables of our survey were hardly studied before. We aimed to explore deeply the dataset by laying the stress on the analysis of the consequences of the banning of sodium arsenite on the incidence rates of the diseases and the mortality rate as well as on their evolutions.

The multiple correspondence analysis allowed us to depict the associations between the main variables. The factorial analysis of mixed data confirmed these results and enabled us to spot other associations between the variables. The multi-table correspondence analysis took time into account and therefore provided us an analysis of the evolution of the two diseases and of the mortality rate.

One of the main results of these analyses is that the diseases highly depend on the vine variety as well as on the vine-growing region. We also shed light on the fact that the eutypa dieback is mainly linked with the age of the grapevine whereas the higher esca/BDA incidence rates were associated with young grapevines and the increase of its incidence rate is slowed down by the use of sodium arsenite which is not the case for the eutypa dieback. As to the mortality rate of the grapevines the main factors of influence are the eutypa dieback and the esca/BDA incidence rates as well as the age of the grapevine. The link between the use of sodium arsenite and the mortality rate was not spotted to be significant.

Other statistical methods were used to investigate this dataset from a modelling point of view, which will be the core of a upcoming article. For instance, both binary and ordinal logistic regressions models were fitted and the results they highlighted do not depart from those we got with the factor analyses we made throughout this analysis.

## Acknowledgements

The authors are grateful to Editor-in-Chief Dominique Haughton and two referees for their helpful and valuable comments.

## Use of the dataset policy

Permission is granted to use the dataset generated by the National Grapevine Wood Diseases Survey to Academic purposes only. Any scientific research works or results based on the use of the dataset generated by the National Grapevine Wood Diseases Survey must be authorized by the French Agriculture Office<sup>13</sup>.

## References

- AGRESTI A. (1990), *Categorical data analysis*, Wiley, New York.
- BRY X. (1995), *Analyses factorielles simples*, Economica, Paris.
- BRY X. (1996), *Analyses factorielles multiples*, Economica, Paris.
- CAZES P. (2004), Quelques méthodes d'analyse factorielle d'une série de tableaux de données, *Revue MODULAD*, Paris.
- CHELSEL D., DUFOUR A.-B. and THIOULOUSE J. (2004), The ade4 package –I– One-table methods, *R News*, 4, 5–10.
- ESCOFIER B. (1979), Traitement simultané de variables quantitatives et qualitatives en analyse factorielle, *Les cahiers de l'analyse des données*, 4 (2), 132–146.
- ESCOFIER B. and PAGÈS J. (1998), *Analyses factorielles simples et multiples*, 3<sup>rd</sup> edition, Dunod, Paris.
- FOX J. and with contributions from ASH M., BOYE T., CALZA S., CHANG A., GROSJEAN P., HEIBERGER R., KERNS G. J., LANCELOT R., LESNOFF M., MESSAD S., MAECHLER M., PUTLER D., RISTIC M. and WOLF P. (2007), *Rcmdr: R Commander*, <http://www.r-project.org>, <http://socserv.socsci.mcmaster.ca/jfox/Misc/Rcmdr/>.
- FREEMAN G.H. and HALTON J.H. (1951), Note on an exact treatment of contingency, goodness of fit and other problems of significance, *Biometrika*, 38, 141–149.
- GREENACRE M.J. (1984), *Theory and Applications of Correspondence Analysis*, Academic Press, New-York.
- GREENACRE M.J. (1993), *Correspondence Analysis in Practice*, 1<sup>st</sup> edition, Academic Press, New-York.
- GREENACRE M.J. and BLASIUS J. (2006), *Multiple Correspondence Analysis and related methods*, Chapman-Hall, Boca-Raton.
- HUSSON F., LÊ S. and MAZET J. (2007), *FactoMineR: Factor Analysis and Data Mining with R*, <http://factominer.free.fr>, <http://www.agrocampus-rennes.fr/math/>.
- LAVIT Ch., ESCOUFIER Y., SABATIER R. and TRAISSAC P. (1994), The ACT (STATIS Method), *Computational Statistics and Data Analysis*, 18, 97–119.
- PAGÈS J. (2002), Analyse factorielle multiple appliquée aux variables qualitatives et aux données mixtes, *Rev. Statistique Appliquée*, **L** (4), 5–37.
- PAGÈS J. (2004), Analyse factorielle de données mixtes, *Rev. Statistique Appliquée* **LII** (4) 93–111.
- SAVARY S., MADDEN L.V., ZADOKS J.C. and KLEIN-GEBBINCK H.W. (1995), Use of Categorical Information and Correspondence Analysis in Plant Disease Epidemiology, *Advances in Botanical Research incorporating Advances in Plant Pathology*, **21**, 213–240.
- SIEGEL S. and CASTELLAN N.J. (1988), *Nonparametric Statistics for the Behavioural Sciences*, 2<sup>nd</sup> edition, McGraw-Hill Inc, New York.
- R Development Core Team (2007), *R: A Language and Environment for Statistical Computing*, R Foundation for Statistical Computing, Vienna, <http://www.R-project.org>.

---

<sup>13</sup> Email: [jacques.grosman@agriculture.gouv.fr](mailto:jacques.grosman@agriculture.gouv.fr).