



**HAL**  
open science

## Fitness landscape of the cellular automata majority problem: View from the Olympus

Sébastien Verel, Philippe Collard, Marco Tomassini, Leonardo Vanneschi

► **To cite this version:**

Sébastien Verel, Philippe Collard, Marco Tomassini, Leonardo Vanneschi. Fitness landscape of the cellular automata majority problem: View from the Olympus. *Theoretical Computer Science*, 2007, 378 (1), pp.54-77. 10.1016/j.tcs.2007.01.001 . hal-00164772

**HAL Id: hal-00164772**

**<https://hal.science/hal-00164772v1>**

Submitted on 25 Sep 2007

**HAL** is a multi-disciplinary open access archive for the deposit and dissemination of scientific research documents, whether they are published or not. The documents may come from teaching and research institutions in France or abroad, or from public or private research centers.

L'archive ouverte pluridisciplinaire **HAL**, est destinée au dépôt et à la diffusion de documents scientifiques de niveau recherche, publiés ou non, émanant des établissements d'enseignement et de recherche français ou étrangers, des laboratoires publics ou privés.

# Fitness Landscape of the Cellular Automata Majority Problem: View from the "Olympus"

S. Verel<sup>a</sup>, P. Collard<sup>a</sup>, M. Tomassini<sup>b</sup> and L. Vanneschi<sup>c</sup>

<sup>a</sup>*Laboratoire I3S, CNRS-University of Nice Sophia Antipolis, France*

<sup>b</sup>*Information Systems Department, University of Lausanne, Switzerland*

<sup>c</sup>*Dipartimento di Informatica Sistemistica e Comunicazione, University of  
Milano-Bicocca, Italy*

---

## Abstract

In this paper we study cellular automata (CAs) that perform the computational Majority task. This task is a good example of what the phenomenon of emergence in complex systems is. We take an interest in the reasons that make this particular fitness landscape a difficult one. The first goal is to study landscape as such, and thus it is ideally independent from the actual heuristics used to search the space. However, a second goal is to understand the features a good search technique for this particular problem space should possess. We statistically quantify in various ways the degree of difficulty of searching this landscape. Due to neutrality, investigations based on sampling techniques on the whole landscape are difficult to conduct. So, we go exploring the landscape *from the top*. Although it has been proved that no CA can perform the task perfectly, several efficient CAs for this task have been found. Exploiting similarities between these CAs and symmetries in the landscape, we define the *Olympus* landscape which is regarded as the "heavenly home" of the *best local optima known* (blok). Then we measure several properties of this subspace. Although it is easier to find relevant CAs in this subspace than in the overall landscape, there are structural reasons that prevents a searcher from finding overfitted CAs in the Olympus. Finally, we study dynamics and performances of genetic algorithms on the *Olympus* in order to confirm our analysis and to find efficient CAs for the Majority problem with low computational cost.

*Key words:* Fitness landscapes, Correlation analysis, Neutrality, Cellular automata, AR models

---

*Preprint submitted to Elsevier Science*

## 1 Introduction

Cellular automata (CAs) are discrete dynamical systems that have been studied theoretically for years due to their architectural simplicity and the wide spectrum of behaviors they are capable of [1,2]. CAs are capable of universal computation and their time evolution can be complex. But many CAs show simpler dynamical behaviors such as fixed points and cyclic attractors. Here we study CAs that can be said to perform a simple “computational” task. One such task is the so-called *majority* or *density* task in which a two-state CA is to decide whether the initial state contains more zeros than ones or *vice versa*. In spite of the apparent simplicity of the task, it is difficult for a local system as a CA as it requires a coordination among the cells. As such, it is a perfect paradigm of the phenomenon of *emergence* in complex systems. That is, the task solution is an emergent global property of a system of locally interacting agents. Indeed, it has been proved that no CA can perform the task perfectly i.e., for any possible initial binary configuration of states [3]. However, several efficient CAs for the density task have been found either by hand or by using heuristic methods, especially evolutionary computation [4,5,6,7,8,9]. For a recent review of the work done on the problem in the last ten years see [10].

All previous investigations have empirically shown that finding good CAs for the majority task is very hard. In other words, the space of automata that are feasible solutions to the task is a difficult one to search. However, there have been no investigations, to our knowledge, of the reasons that make this particular fitness landscape a difficult one. In this paper we try to statistically quantify in various ways the degree of difficulty of searching the majority CA landscape. Our investigation is a study of the fitness landscape as such, and thus it is ideally independent from the actual heuristics used to search the space provided that they use independent bit mutation as a search operator. However, a second goal of this study is to understand the features a good search technique for this particular problem space should possess.

The present study follows in the line of previous work by Hordijk [11] for another interesting collective CA problem: the synchronization task [12].

The paper proceeds as follows. The next section summarizes definitions and facts about CAs and the density task, including previous results obtained in building CAs for the task. A description of fitness landscapes and their statistical analysis follows. This is followed by a detailed analysis of the majority problem fitness landscape. Next we identify and analyze a particular subspace of the problem search space called the Olympus. Finally, we present our conclusions and hints to further works and open questions.

## 2 Cellular Automata and the Majority Problem

### 2.1 Cellular Automata

CAs are dynamical systems in which space and time are discrete. A standard CA consists of an array of cells, each of which can be in one of a finite number of possible states, updated synchronously in discrete time steps, according to a local, identical transition rule. Here we will only consider boolean automata for which the cellular state  $s \in \{0, 1\}$ . The regular cellular array (grid) is  $d$ -dimensional, where  $d = 1, 2, 3$  is used in practice. For one-dimensional grids, a cell is connected to  $r$  local neighbors (cells) on either side where  $r$  is referred to as the *radius* (thus, each cell has  $2r + 1$  neighbors, including itself). The *transition rule* contained in each cell is specified in the form of a rule table, with an entry for every possible neighborhood configuration of states. The state of a cell at the next time step is determined by the current states of a surrounding neighborhood of cells. Thus, for a linear CA of radius  $r$  with  $1 \leq r \leq N$ , the update rule can be written as:

$$s_{t+1}^i = \phi(s_t^{i-r}, \dots, s_t^i, \dots, s_t^{i+r}),$$

where  $s_t^i$  denotes the state of site  $i$  at time  $t$ ,  $\phi$  represents the local transition rule, and  $r$  is the CA radius.

The term *configuration* refers to an assignment of ones and zeros to all the cells at a given time step. It can be described by  $\mathbf{s}_t = (s_t^0, s_t^1, \dots, s_t^{N-1})$ , where  $N$  is the lattice size. The CAs used here are linear with periodic boundary conditions  $s_t^{N+i} = s_t^i$  i.e., they are topologically rings.

A global update rule  $\Phi$  can be defined which applies in parallel to all the cells:

$$\mathbf{s}_{t+1} = \Phi(\mathbf{s}_t).$$

The global map  $\Phi$  thus defines the time evolution of the whole CA.

To visualize the behavior of a CA one can use a two-dimensional space-time diagram, where the horizontal axis depicts the configuration  $\mathbf{s}_t$  at a certain time  $t$  and the vertical axis depicts successive time steps, with time increasing down the page (for example, see figure 1).

### 2.2 The Majority Problem

The density task is a prototypical distributed computational problem for CAs. For a finite CA of size  $N$  it is defined as follows. Let  $\rho_0$  be the fraction of 1s in the *initial configuration* (IC)  $\mathbf{s}_0$ . The task is to determine whether  $\rho_0$  is greater than or less than  $1/2$ . In this version, the problem is also known as

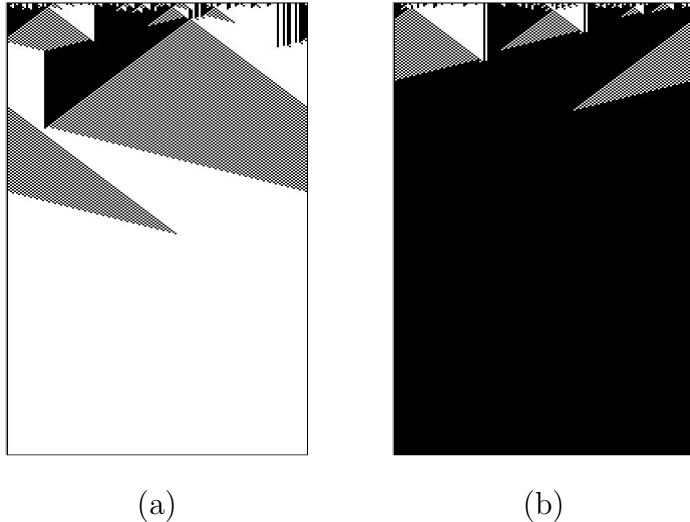


Fig. 1. Space-time diagram for the GKL rule. The density of zeros  $\rho_0$  is 0.476 in (a) and  $\rho_0 = 0.536$  in (b). State 0 is depicted in white; 1 in black.

the *majority* problem. If  $\rho_0 > 1/2$  then the CA must relax to a fixed-point configuration of all 1's that we indicate as  $(1)^N$ ; otherwise it must relax to a fixed-point configuration of all 0's, noted  $(0)^N$ , after a number of time steps of the order of the grid size  $N$ . Here  $N$  is set to 149, the value that has been customarily used in research on the density task (if  $N$  is odd one avoids the case  $\rho_0 = 0.5$  for which the problem is undefined).

This computation is trivial for a computer having a central control. Indeed, just scanning the array and adding up the number of, say, 1 bits will provide the answer in  $O(N)$  time. However, it is nontrivial for a small radius one-dimensional CA since such a CA can only transfer information at finite speed relying on local information exclusively, while density is a global property of the configuration of states [4].

It has been shown that the density task cannot be solved perfectly by a uniform, two-state CA with finite radius [3], although a slightly modified version of the task can be shown to admit perfect solution by such an automaton [13]. It can also be solved perfectly by a combination of automata [14].

### 2.3 Previous Results on the Majority task

The lack of a perfect solution does not prevent one from searching for imperfect solutions of as good a quality as possible. In general, given a desired global behavior for a CA (e.g., the density task capability), it is extremely difficult to infer the local CA rule that will give rise to the emergence of the computation sought. This is because of the possible nonlinearities and large-scale collective effects that cannot in general be predicted from the sole local CA updating rule, even if it is deterministic. Since exhaustive evaluation of all

possible rules is out of the question except for elementary ( $d = 1, r = 1$ ) and perhaps radius-two automata, one possible solution of the problem consists in using evolutionary algorithms, as first proposed by Packard in [15] and further developed by Mitchell *et al.* in [5,4].

The *performance* of the best rules found at the end of the evolution is evaluated on a larger sample of ICs and it is defined as the fraction of correct classifications over  $n = 10^4$  randomly chosen ICs. The ICs are sampled according to a binomial distribution (i.e., each bit is independently drawn with probability  $1/2$  of being 0).

Mitchell and coworkers performed a number of studies on the emergence of synchronous CA strategies for the density task (with  $N = 149$ ) during evolution [5,4]. Their results are significant since they represent one of the few instances where the dynamics of emergent computation in complex, spatially extended systems can be understood. In summary, these findings can be subdivided into those pertaining to the evolutionary history and those that are part of the “final” evolved automata. For the former, they essentially observed that, in successful evolution experiments, the fitness of the best rules increases in time according to rapid jumps, giving rise to what they call “epochs” in the evolutionary process. Each epoch corresponds roughly to a new, increasingly sophisticated solution strategy. Concerning the final CA produced by evolution, it was noted that, in most runs, the GA found unsophisticated strategies that consisted in expanding sufficiently large blocks of adjacent 1s or 0s. This “block-expanding” strategy is unsophisticated in that it mainly uses local information to reach a conclusion. As a consequence, only those IC that have low or high density are classified correctly since they are more likely to have extended blocks of 1s or 0s. In fact, these CA have a performance around 0.6. However, some of the runs gave solutions that presented novel, more sophisticated features that yielded better performance (around 0.77) on a wide distribution of ICs. However, high-performance automata have evolved only nine times out of 300 runs of the genetic algorithm. This clearly shows that it is very difficult for genetic algorithm to find good solutions in this the search space.

These new strategies rely on traveling signals that transfer spatial and temporal information about the density in local regions through the lattice. An example of such a strategy is given in Figure 1, where the behavior of the so-called GKL rule is depicted [4]. The GKL rule is hand-coded but its behavior is similar to that of the best solutions found by evolution. Crutchfield and coworkers have developed sophisticated methodologies for studying the transfer of long-range signals and the emergence of computation in evolved CA. This framework is known as “computational mechanics” and it describes the intrinsic CA computation in terms of regular domains, particles, and particle interactions. Details can be found in [16,17,10].

Andre *et al.* in [7] have been able to artificially evolve a better CA by using genetic programming. Finally, Juillé and Pollack [8] obtained still better CAs by using a coevolutionary algorithm. Their coevolved CA has performance

about 0.86, which is the best result known to date.

### 3 Fitness Landscapes

#### 3.1 Introduction

First we recall a few fundamental concepts about fitness landscapes (see [18,19] for a more detailed treatment). A landscape is a triplet  $(S, f, N)$  where  $S$  is a set of *potential solutions* (also called search space),  $N : S \rightarrow 2^S$ , a *neighborhood* structure, is a function that assigns to every  $s \in S$  a set of neighbors  $N(s)$ , and  $f : S \mapsto \mathbb{R}$  is a fitness function that can be pictured as the “height” of the corresponding potential solutions.

Often a topological concept of *distance*  $d$  can be associated to a neighborhood  $N$ . A distance  $d : S \times S \mapsto \mathbb{R}^+$  is a function that associates with any two configurations in  $S$  a nonnegative real number that verifies well-known properties.

For example, for a binary coded GA, the fitness landscape  $S$  is constituted by the boolean hypercube  $B = \{0, 1\}^l$  consisting of the  $2^l$  solutions for strings of length  $l$  and the associated fitness values. The neighborhood of a solution, for the one-bit random mutation operator, is the set of points  $y \in B$  that are reachable from  $x$  by flipping one bit. A natural definition of distance for this landscape is the well-known *Hamming* distance.

Based on the neighborhood notion, one can define *local optima* as being configurations  $x$  for which (in the case of maximization):  $\forall y \in N(x), f(y) \leq f(x)$

Global optima are defined as being the absolute maxima (or minima) in the whole of  $S$ . Other features of a landscape such as basins, barriers, or neutrality can be defined likewise[18]. Neutrality is a particularly important notion in our study, and will be dealt with further.

A notion that will be used in the rest of this work is that of a *walk* on a landscape. A walk  $\Gamma$  from  $s$  to  $s'$  is a sequence  $\Gamma = (s_0, s_1, \dots, s_m)$  of solutions belonging to  $S$  where  $s_0 = s$ ,  $s_m = s'$  and  $\forall i \in [1, m], s_i$  is a neighbor of  $s_{i-1}$ . The walk can be random, for instance solutions can be chosen with uniform probability from the neighborhood, as in random sampling, or according to other weighted non-uniform distributions, as in Monte Carlo sampling, for example. It can also be obtained through the repeated application of a “move” operator, either stochastic or deterministic, defined on the landscape, such as a form of mutation or a deterministic hill-climbing strategy.

### 3.2 Neutrality

The notion of neutrality has been suggested by Kimura [20] in his study of the evolution of molecular species. According to this view, most mutations are neutral (their effect on fitness is small) or lethal.

In the analysis of fitness landscapes, the notion of neutral mutation appears to be useful [21]. Let us thus define more precisely the notion of neutrality for fitness landscapes.

**Definition:** A *test of neutrality* is a predicate  $isNeutral : S \times S \rightarrow \{true, false\}$  that assigns to every  $(s_1, s_2) \in S^2$  the value *true* if there is a small difference between  $f(s_1)$  and  $f(s_2)$ .

For example, usually  $isNeutral(s_1, s_2)$  is *true* if  $f(s_1) = f(s_2)$ . In that case,  $isNeutral$  is an equivalence relation. Other useful cases are  $isNeutral(s_1, s_2)$  is *true* if  $|f(s_1) - f(s_2)| \leq 1/M$  with  $M$  is the population size. When  $f$  is stochastic,  $isNeutral(s_1, s_2)$  is *true* if  $|f(s_1) - f(s_2)|$  is under the evaluation error.

**Definition:** For every  $s \in S$ , the *neutral neighborhood* of  $s$  is the set  $N_{neut}(s) = \{s' \in N(s) \mid isNeutral(s, s')\}$  and the *neutral degree* of  $s$ , noted  $nDeg(s)$  is the number of neutral neighbors of  $s$ ,  $nDeg(s) = \#(N_{neut}(s) - \{s\})$ .

A fitness landscape is neutral if there are many solutions with high neutral degree. In this case, we can imagine fitness landscapes with some plateaus called *neutral networks*. Informally, there is no significant difference of fitness between solutions on neutral networks and the population drifts around on them.

**Definition:** A *neutral walk*  $W_{neut} = (s_0, s_1, \dots, s_m)$  from  $s$  to  $s'$  is a walk from  $s$  to  $s'$  where for all  $(i, j) \in [0, m]^2$ ,  $isNeutral(s_i, s_j)$  is *true*.

**Definition:** A *Neutral Network*, denoted  $NN$ , is a graph  $G = (V, E)$  where the set  $V$  of vertices is the set of solutions belonging to  $S$  such that for all  $s$  and  $s'$  from  $V$  there is a neutral walk  $W_{neut}$  belonging to  $V$  from  $s$  to  $s'$ , and two vertices are connected by an edge of  $E$  if they are neutral neighbors.

**Definition:** A *portal* in a  $NN$  is a solution which has at least one neighbor with greater fitness.



### 3.3 Statistical Measures on Landscapes

#### 3.3.1 Density of States

H. Rosé *et al.* [22] develop the *density of states* approach (DOS) by plotting the number of sampled solutions in the search space with the same fitness value. Knowledge of this density allows to evaluate the performance of random search or random initialization of metaheuristics. DOS gives the probability of having a given fitness value when a solution is randomly chosen. The tail of the distribution at optimal fitness value gives a measure of the difficulty of an optimization problem: the faster the decay, the harder the problem.

#### 3.3.2 Neutrality

To study the neutrality of fitness landscapes, we should be able to measure and describe a few properties of  $NN$ . The following quantities are useful. The *size*  $\#NN$  i.e., the number of vertices in a  $NN$ , the *diameter*, which is the longest distance over the distance<sup>1</sup> between two solutions belonging to  $NN$ . The *neutral degree distribution* of solutions is the degree distribution of the vertices in a  $NN$ . Together with the size and the diameter, it gives information which plays a role in the dynamics of metaheuristic [23,24]. Huynen [25] defined the *innovation rate* of  $NN$  to explain the advantage of neutrality in fitness landscapes. This rate is the number of new, previously unencountered fitness values observed in the neighborhood of solutions along a neutral walk on  $NN$ . Finally,  $NN$  *percolate* the landscape if they come arbitrarily close to almost any every other  $NN$  ; this means that, if the innovation rate is high, a neutral path could be a good way to explore the landscape.

Another way to describe  $NN$  is given by the *autocorrelation of neutral degree* along a neutral random walk [26]. From neutral degree collected along this neutral walk, we computed its autocorrelation (see section 3.3.4). The autocorrelation measures the correlation structure of a  $NN$ . If the correlation is low, the variation of neutral degree is low ; and so, there is some areas in  $NN$  of solutions which have nearby neutral degrees.

#### 3.3.3 Fitness Distance Correlation

This statistic was first proposed by Jones [19] with the aim of measuring the difficulty of problems with a single number. Jones's approach states that what makes a problem hard is the relationship between fitness and distance of the solutions from the optimum. This relationship can be summarized by

---

<sup>1</sup> the distance is the shortest length path between two nodes

calculating the *fitness-distance correlation coefficient (FDC)*. Given a set  $F = \{f_1, f_2, \dots, f_m\}$  of  $m$  individual fitness values and a corresponding set  $D = \{d_1, d_2, \dots, d_m\}$  of the  $m$  distances to the nearest global optimum, FDC is defined as:

$$FDC = \frac{C_{FD}}{\sigma_F \sigma_D}$$

where:

$$C_{FD} = \frac{1}{m} \sum_{i=1}^m (f_i - \bar{f})(d_i - \bar{d})$$

is the covariance of  $F$  and  $D$  and  $\sigma_F$ ,  $\sigma_D$ ,  $\bar{f}$  and  $\bar{d}$  are the standard deviations and means of  $F$  and  $D$ . Thus, by definition,  $FDC \in [-1, 1]$ . As we hope that fitness increases as distance to a global optimum decreases (for maximization problems), we expect that, with an ideal fitness function, FDC will assume the value of  $-1$ . According to Jones [19], GA problems can be classified in three classes, depending on the value of the FDC coefficient:

- *Misleading* ( $FDC \geq 0.15$ ), in which fitness increases with distance.
- *Difficult* ( $-0.15 < FDC < 0.15$ ) in which there is virtually no correlation between fitness and distance.
- *Straightforward* ( $FDC \leq -0.15$ ) in which fitness increases as the global optimum approaches.

The second class corresponds to problems for which the FDC coefficient does not bring any information. The threshold interval  $[-0.15, 0.15]$  has been empirically determined by Jones. When FDC does not give a clear indication i.e., in the interval  $[-0.15, 0.15]$ , examining the scatterplot of fitness versus distance can be useful.

The FDC has been criticized on the grounds that counterexamples can be constructed for which the measure gives wrong results [27,28,29]. Another drawback of FDC is the fact that it is not a *predictive* measure since it requires knowledge of the optima. Despite its shortcomings, we use FDC here as another way of characterizing problem difficulty because we know some optima and we predict whether or not it is easy to reach those local optima.

### 3.3.4 The Autocorrelation Function and the Box-Jenkins approach

Weinberger [30,31] introduced the *autocorrelation function* and the *correlation length* of random walks to measure the correlation structure of fitness landscapes. Given a random walk  $(s_t, s_{t+1}, \dots)$ , the autocorrelation function  $\rho$  of a fitness function  $f$  is the autocorrelation function of time series  $(f(s_t), f(s_{t+1}), \dots)$  :

$$\rho(k) = \frac{E[f(s_t)f(s_{t+k})] - E[f(s_t)]E[f(s_{t+k})]}{\text{var}(f(s_t))}$$

where  $E[f(s_t)]$  and  $var(f(s_t))$  are the expected value and the variance of  $f(s_t)$ . Estimates  $r(k)$  of autocorrelation coefficients  $\rho(k)$  can be calculated with a time series  $(s_1, s_2, \dots, s_L)$  of length  $L$  :

$$r(k) = \frac{\sum_{j=1}^{L-k} (f(s_j) - \bar{f})(f(s_{j+k}) - \bar{f})}{\sum_{j=1}^L (f(s_j) - \bar{f})^2}$$

where  $\bar{f} = \frac{1}{L} \sum_{j=1}^L f(s_j)$ , and  $L \gg 0$ . A random walk is representative of the entire landscape when the landscape is statistically isotropic. In this case, whatever the starting point of random walks and the selected neighbors during the walks, estimates of  $r(n)$  must be nearly the same. Estimation error diminishes with the walk length.

The correlation length  $\tau$  measures how the autocorrelation function decreases and it summarizes the ruggedness of the landscape: the larger the correlation length, the smoother is the landscape. Weinberger's definition  $\tau = -\frac{1}{\ln(\rho(1))}$  makes the assumption that the autocorrelation function decreases exponentially. Here we will use another definition that comes from a more general analysis of time series, the Box-Jenkins approach [32], introduced in the field of fitness landscapes by Hordijk [33]. The time series of fitness values will be approached by an *autoregressive moving-average* (ARMA) model. In ARMA( $p, q$ ) model, the current value depends linearly on the  $p$  previous values and the  $q$  previous white noises.

$$f(s_t) = c + \sum_{i=1}^p \alpha_i f(s_{t-i}) + \epsilon_t + \sum_{i=1}^q \beta_i \epsilon_{t-i} \text{ where } \epsilon_t \text{ are white noises.}$$

The approach consists in the iteration of three stages [32]. The *identification stage* consists in determining the value of  $p$  and  $q$  using the autocorrelation function (acf) and the partial autocorrelation function (pacf) of the time series. The *estimation stage* consists in determining the values  $c$ ,  $\alpha_i$  and  $\beta_i$  using the pacf. The significance of this values is tested by a t-test. The value is not significant if t-test is below 2. The *diagnostic checking stage* is composed of two parts. The first one checks the adequation between data and estimated data. We use the *square correlation*  $R^2$  between observed data of the time series and estimated data produced by the model and the *Akaike information criterion AIC*:

$$AIC(p, q) = \log(\hat{\sigma}^2) + 2(p + q)/L \text{ where } \hat{\sigma}^2 = L^{-1} \sum_{j=1}^L (y_j - \hat{y}_j)^2$$

The second one checks the white noise of residuals which is the difference between observed data value and estimated values. For this, the autocorrelation of residuals and the p-value of Ljung-Box test are computed.

### 3.4 Fitness Cloud and NSC

We use the *fitness cloud* (FC) standpoint, first introduced in [34] by Vérel and coworkers. The fitness cloud relative to the local search operator  $op$  is the conditional bivariate probability density  $P_{op}(Y = \tilde{\varphi} \mid X = \varphi)$  of reaching a solution of fitness value  $\tilde{\varphi}$  from a solution of fitness value  $\varphi$  applying the operator  $op$ . To visualize the fitness cloud in two dimensions, we plot the scatterplot  $FC = \{(\varphi, \tilde{\varphi}) \mid P_{op}(\varphi, \tilde{\varphi}) \neq 0\}$ .

In general, the size of the search space does not allow to consider all the possible individuals, when trying to draw a fitness cloud. Thus, we need to use samples to estimate it. We prefer to sample the space according to a distribution that gives more weight to “important” values in the space, for instance those at a higher fitness level. This is also the case of any biased searcher such as an evolutionary algorithm, simulated annealing and other heuristics, and thus this kind of sampling process more closely simulates the way in which the program space would be traversed by a searcher. So, we use the Metropolis-Hastings technique [35] to sample the search space.

The Metropolis-Hastings sampling technique is an extension of the Metropolis algorithm to non-symmetric stationary probability distributions. It can be defined as follows. Let  $\alpha$  be the function defined as:

$$\alpha(x, y) = \min\left\{1, \frac{y}{x}\right\},$$

and  $f(\gamma_k)$  be the fitness of individual  $\gamma_k$ . A sample of individuals  $\{\gamma_1, \gamma_2, \dots, \gamma_n\}$  is built with the algorithm shown in figure 2.

In order to algebraically extract some information from the fitness cloud, in [36,37], we have defined a measure, called *negative slope coefficient* (*nsc*). The abscissas of a scatterplot can be partitioned into  $m$  segments  $\{I_1, I_2, \dots, I_m\}$  with various techniques. Analogously, a partition of the ordinates  $\{J_1, J_2, \dots, J_m\}$  can be done, where each segment  $J_i$  contains all the ordinates corresponding to the abscissas contained in  $I_i$ . Let  $M_1, M_2, \dots, M_m$  be the averages of the abscissa values contained inside the segments  $I_1, I_2, \dots, I_m$  and let  $N_1, N_2, \dots, N_m$  be the averages of the ordinate values in  $J_1, J_2, \dots, J_m$ . Then we can define the set of segments  $\{S_1, S_2, \dots, S_{m-1}\}$ , where each  $S_i$  connects the point  $(M_i, N_i)$  to the point  $(M_{i+1}, N_{i+1})$ . For each one of these segments  $S_i$ , the *slope*  $P_i$  can be calculated as follows:

$$P_i = \frac{N_{i+1} - N_i}{M_{i+1} - M_i}$$

```

begin
   $\gamma_1$  is generated uniformly at random;
  for  $k := 2$  to  $n$  do
    1. an individual  $\delta$  is generated uniformly at random;
    2. a random number  $u$  is generated from a
       uniform (0,1) distribution;
    3. if ( $u \leq \alpha(f(\gamma_{k-1}), f(\delta))$ )
       then  $\gamma_k := \delta$ 
       else goto 1.
       endif
    4.  $k := k + 1$ ;
  endfor
end

```

Fig. 2. The algorithm for sampling a search space with the Metropolis-Hastings technique.

Finally, we can define the NSC as:

$$nsc = \sum_{i=1}^{m-1} c_i, \quad \text{where: } \forall i \in [1, m) \quad c_i = \min(P_i, 0)$$

We hypothesize that  $nsc$  can give some indication of problem difficulty in the following sense: if  $nsc = 0$ , the problem is easy, if  $nsc < 0$  the problem is difficult and the value of  $nsc$  quantifies this difficulty: the smaller its value, the more difficult the problem. In other words, according to our hypothesis, a problem is difficult if at least one of the segments  $S_1, S_2, \dots, S_{m-1}$  has a negative slope and the sum of all the negative slopes gives a measure of problem hardness. The idea is that the presence of a segment with negative slope indicates a bad evolvability for individuals having fitness values contained in that segment.

## 4 Analysis of the Majority Problem Fitness Landscape

### 4.1 Definition of the fitness landscape

As in Mitchell [4], we use CA of radius  $r = 3$  and configurations of length  $N = 149$ . The set  $S$  of potential solutions of the Majority Fitness Landscape is the set of binary string which represent the possible CA rules. The size of  $S$  is  $2^{2^{2r+1}} = 2^{128}$ , and each automaton should be tested on the  $2^{149}$  possible different ICs. This gives  $2^{277}$  possibilities, a size far too large to be searched exhaustively. Since performance can be defined in several ways, the consequence is that for each feasible CA in the search space, the associated fitness can be

different, and thus effectively inducing different landscapes. In this work we will use one type of performance measure based on the fraction of  $n$  initial configurations that are correctly classified from one sample. We call *standard performance* (see also section 2.3) the performance when the sample is drawn from a binomial distribution (i.e., each bit is independently drawn with probability  $1/2$  of being 0). Standard performance is a hard measure because of the predominance in the sample of ICs close to 0.5 and it has been typically employed to measure a CA's capability on the density task.

The standard performance cannot be known perfectly due to random variation of samples of ICs. The fitness function of the landscape is stochastic one which allows population of solutions to drift around neutral networks. The error of evaluation leads us to define the neutrality of landscape. The ICs are chosen independently, so the fitness value  $f$  of a solution follows a normal law  $\mathcal{N}(f, \frac{\sigma(f)}{\sqrt{n}})$ , where  $\sigma$  is the standard deviation of sample of fitness  $f$ , and  $n$  is the sample size. For binomial sample,  $\sigma^2(f) = f(1 - f)$ , the variance of Bernoulli trial. Then two neighbors  $s$  and  $s'$  are neutral neighbors (*isNeutral*( $s, s'$ ) is *true*) if a t-test accepts the hypothesis of equality of  $f(s)$  and  $f(s')$  with 95 percent of confidence (fig. 3). The maximum number of fitness values statistically different for standard performance is 113 for  $n = 10^4$ , 36 for  $n = 10^3$  and 12 for  $n = 10^2$ .

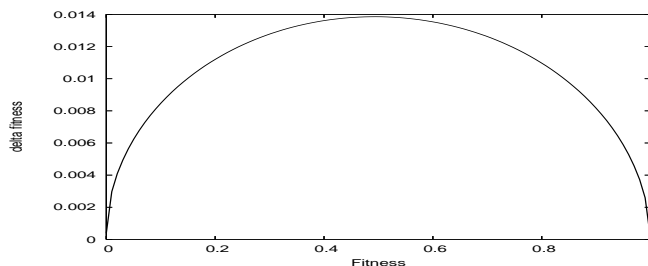


Fig. 3. Error of standard performance as a function of standard performance given by t-test with 95 percent of confidence with sample of size  $n = 10^4$ . Bitflip is neutral if the absolute value of the difference between the two fitnesses is above the curve.

#### 4.2 First statistical Measures

The DOS of the Majority problem landscape was computed using the uniform random sampling technique. The number of sampled points is 4000 and, among them, the number of solutions with a fitness value equal to 0 is 3979. Clearly, the space appears to be a difficult one to search since the tail of the distribution to the right is non-existent. Figure 4 shows the DOS obtained using the Metropolis-Hastings technique. This time, over the 4000 solutions sampled, only 176 have a fitness equal to zero, and the DOS clearly shows a more uniform distribution of rules over many different fitness values.

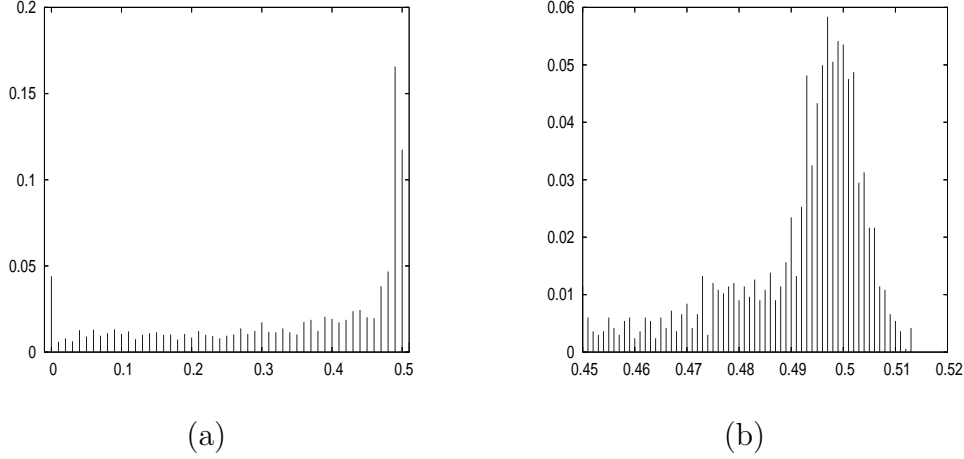


Fig. 4. DOS obtained using the Metropolis-Hastings technique to sample the search space, between fitness values 0.0 and 0.52 in (a) and between 0.45 and 0.52 in (b). x-axis: fitness values; y-axis: fitness values frequencies.

It is important to remark a considerable number of solutions sampled with a fitness approximately equal to 0.5. Furthermore, no individual with a fitness value superior to 0.514 has been sampled. For the details of the techniques used to sample the space, see [36,37]

The autocorrelation along random walks is not significant due to the large number of zero fitness points and is thus not reported here.

The FDC, calculated over a sample of 4000 individuals generated using the Metropolis-Hastings technique, are shown in table 1. Each value has been obtained using one of the best local optima known to date (see section 4.4). FDC values are approximately close to zero for DAS optimum. For ABK optimum, FDC value is near to -0.15, value identified by Jones as the threshold between difficult and straightforward problems. For all the other optima, FDC are close to  $-0.10$ . So, the FDC does not provide information about problem difficulty.

Table 1

FDC values for the six best optima known, calculated over a sample of 4000 solutions generated with the Metropolis-Hastings sampling technique.

Rules	GLK [38]	Davis [7]	Das [39]	ABK [7]	Coe1 [40]	Coe2 [40]
FDC	-0.1072	-0.0809	-0.0112	-0.1448	-0.1076	-0.1105

Figure 5 shows the fitness cloud, and the set of segments used to calculate the NSC. As this figure clearly shows, the Metropolis-Hastings technique allows to sample a significant number of solutions with a fitness value higher than zero. The value of the NSC for this problem is  $-0.7133$ , indicating that it seems difficult for a local search heuristic to reach fitness values close to 0.5,

Table 2

Description of the starting of neutral walks.

0.5004	00000000 00000110 00010000 00010100 00001010 01011000 01111100 01001101
	01000011 11101101 10111111 01000111 01010001 00011111 11111101 01010111
0.7645	00000101 00000100 00000101 10100111 00000101 00000000 00001111 01110111
	00000011 01110111 01010101 10000011 01111011 11111111 10110111 01111111

and going further seems to be much harder.

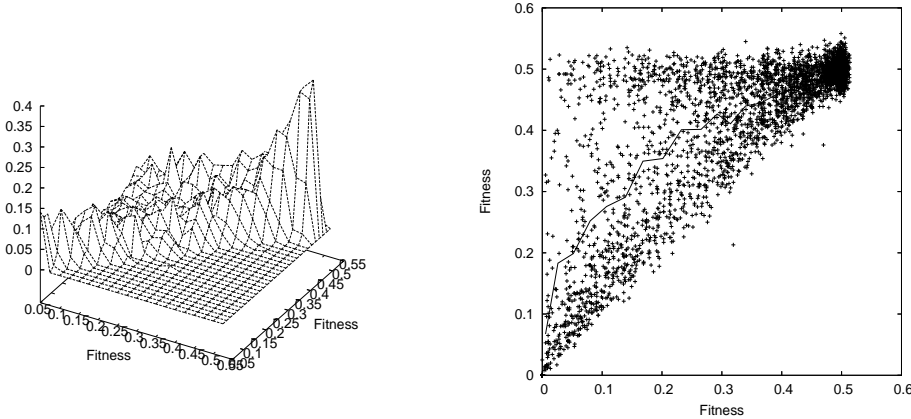


Fig. 5. Fitness Cloud and Scatterplot used to calculate the NSC value. Metropolis-Hastings technique has been used to sample the search space.

### 4.3 Neutrality

Computational costs do not allow us to analyze many neutral networks. In this section we analyze two important large neutral networks ( $NN$ ). A large number of CAs solve the majority density problem on only half of ICs because they converge nearly always on the final configuration  $(0)^N$  or  $(1)^N$  and thus have performance about 0.5. Mitchell [5] calls these “default strategies” and notices that they are the first stage in the evolution of the population before jumping to higher performance values associated to “block-expanding” strategies (see section 2.3). We will study this large  $NN$ , denoted  $NN_{0.5}$  around standard performance 0.5 to understand the link between  $NN$  properties and GA evolution. The other  $NN$ , denoted  $NN_{0.76}$ , is the  $NN$  around fitness 0.7645 which contains one neighbor of a CA found by Mitchell *et al.* The description of this “high”  $NN$  could give clues as how to “escape” from  $NN$  toward even higher fitness values.

In our experiments, we perform 5 neutral walks on  $NN_{0.5}$  and 19 on  $NN_{0.76}$ . Each neutral walk has the same starting point on each  $NN$ . The solution with performance 0.5 is randomly solution and the solution with performance



0.76 is a neighboring solution of solution find by Mitchell (see tab 2). We try to explore the  $NN$  by strictly increasing the Hamming distance from the starting solution at each step of the walk. The neutral walk stops when there is no neutral step that increases distance. The maximum length of walk is thus 128. On average, the length of neutral walks on  $NN_{0.5}$  is 108.2 and 33.1 on  $NN_{0.76}$ . The diameter (see section 3.3.2) of  $NN_{0.5}$  should probably be larger than the one of  $NN_{0.76}$ .

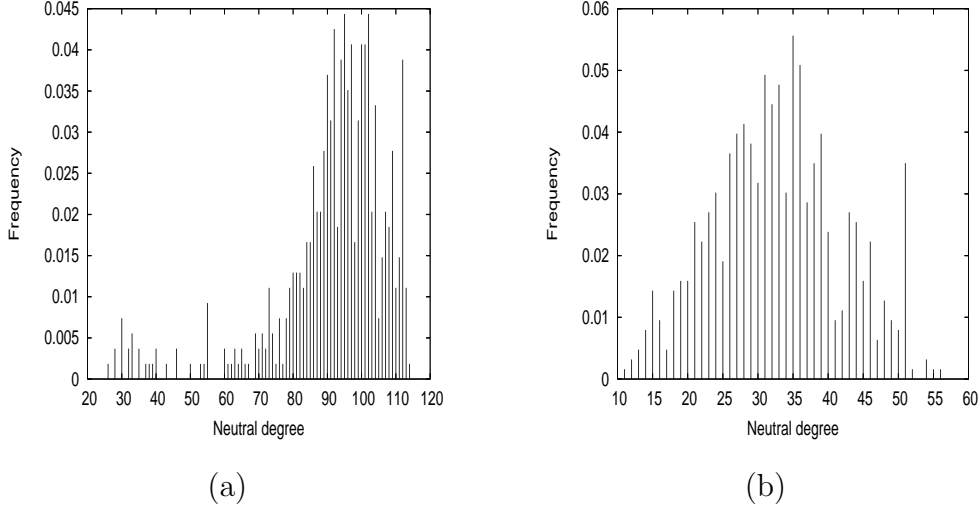


Fig. 6. Distribution of Neutral Degree along all neutral walks on  $NN_{0.5}$  in (a) and  $NN_{0.76}$  in (b).

Figure 6 shows the distribution of neutral degree collected along all neutral walks. The distribution is close to normal for  $NN_{0.76}$ . For  $NN_{0.5}$  the distribution is skewed and approximately bimodal with a strong peak around 100 and a small peak around 32. The average of neutral degree on  $NN_{0.5}$  is 91.6 and standard deviation is 16.6; on  $NN_{0.76}$ , the average is 32.7 and the standard deviation is 9.2. The neutral degree for  $NN_{0.5}$  is very high : 71.6 % of neighbors are neutral neighbors. For  $NN_{0.76}$ , there is 25.5 % of neutral neighbors. It can be compared to the average neutral degree overall neutral  $NKq$ -landscape with  $N = 64$ ,  $K = 2$  and  $q = 2$  which is 33.3 % [41].

Figure 7 gives an estimation of the autocorrelation function of neutral degree of the neutral networks. The autocorrelation function is computed for each neutral walk and the estimation  $r(k)$  of  $\rho(k)$  is given by the average of  $r_i(k)$  over all autocorrelation functions. For both  $NN$ , there is correlation. The correlation is higher for  $NN_{0.5}$  ( $\rho(1) = 0.85$ ) than for  $NN_{0.76}$  ( $\rho(1) = 0.49$ ). From the autocorrelation of the neutral degree, one can conclude that the neutral network topology is not completely random, since otherwise correlation should have been nearly equal to zero. Moreover, the variation of neutral degree is smooth on  $NN$ ; in other words, the neighbors in  $NN$  have nearby neutral degrees. So, there is some area where the neutral degree is homogeneous.

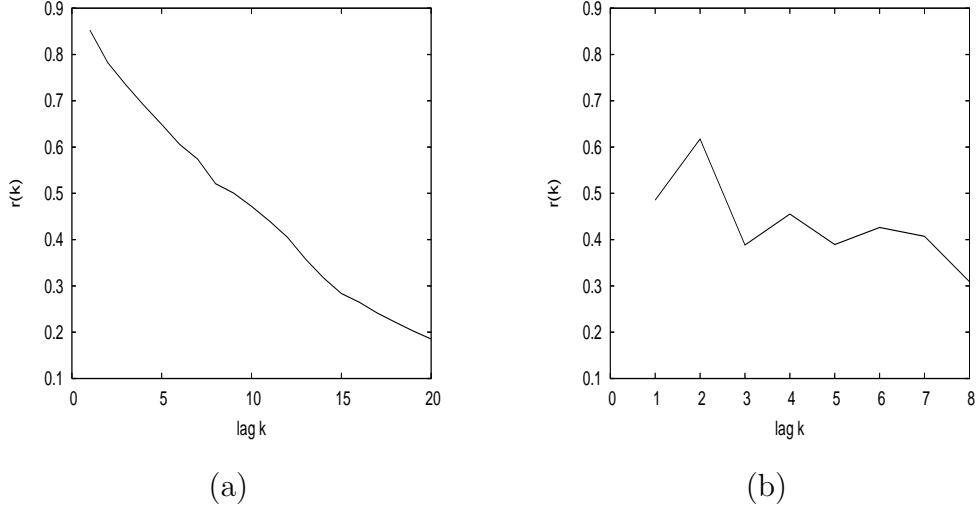


Fig. 7. Estimation of the autocorrelation function of neutral degrees along neutral random walks for  $NN_{0.5}$  (a) and for  $NN_{0.76}$  (b).

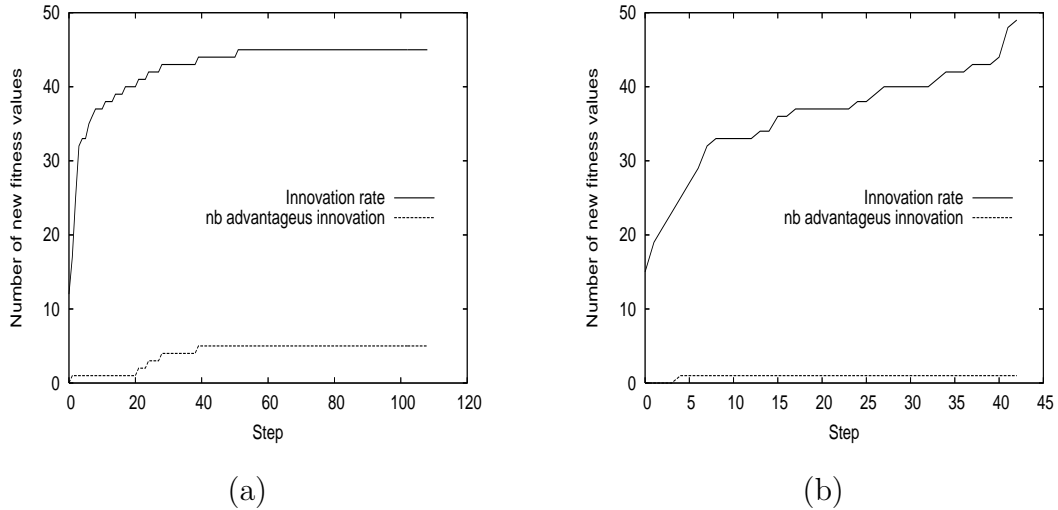


Fig. 8. Innovation rate along one neutral random walk. Fitness of the neutral networks is 0.5004 (a) and 0.7645 (b).

The innovation rate and the number of new better fitnesses found along the longest neutral random walk for each  $NN$  is given in figure 8. The majority of new fitness value found along random walk is deleterious, very few solutions are fitter.

This study give us a better description of Majority fitness landscape neutrality which have important consequence on metaheuristic design. The neutral degree is high. Therefore, the selection operator should take into account the case of equality of fitness values. Likewise the mutation rate and population size should fit to this neutral degree in order to find rare good solutions outside  $NN$  [42]. For two potential solutions  $x$  and  $y$  on  $NN$ , the probability  $p$  that at least one solution escaped from  $NN$  is  $P(x \notin NN \cup y \notin NN) =$

Table 3

Description and standard performance of the 6 previously known best rules (*blok*) computed on sample size of  $10^4$ .

GLK	00000000 01011111 00000000 01011111 00000000 01011111 00000000 01011111
0.815	00000000 01011111 11111111 01011111 00000000 01011111 11111111 01011111
Das	00000000 00101111 00000011 01011111 00000000 00011111 11001111 00011111
0.823	00000000 00101111 11111100 01011111 00000000 00011111 11111111 00011111
Davis	00000111 00000000 00000111 11111111 00001111 00000000 00001111 11111111
0.818	00001111 00000000 00000111 11111111 00001111 00110001 00001111 11111111
ABK	00000101 00000000 01010101 00000101 00000101 00000000 01010101 00000101
0.824	01010101 11111111 01010101 11111111 01010101 11111111 01010101 11111111
Coe1	00000001 00010100 00110000 11010111 00010001 00001111 00111001 01010111
0.851	00000101 10110100 11111111 00010111 11110001 00111101 11111001 01010111
Coe2	00010100 01010001 00110000 01011100 00000000 01010000 11001110 01011111
0.860	00010111 00010001 11111111 01011111 00001111 01010011 11001111 01011111

$P(x \notin NN) + P(y \notin NN) - P(x \notin NN \cap y \notin NN)$ . This probability is higher when solutions  $x$  and  $y$  are far due to the correlation of neutral degree in  $NN$ . To maximize the probability of escaping  $NN$  the distance between potential solutions of population should be as far as possible on  $NN$ . The population of an evolutionary algorithm should spread over  $NN$ .

#### 4.4 Study of the best local optima known

We have seen that it is difficult to have some relevant informations on the Majority Problem landscape by random sampling due to the large number of solutions with zero fitness. In this section, we will study the landscape from the top. Several authors have found fairly good solutions for the density problem, either by hand or, especially, using evolutionary algorithms [38,39,7,40]. We will consider the six Best Local Optima Known<sup>2</sup>, that we call *blok*, with a standard performance over 0.81 (tab. 3). In the following, we will see where the *blok* are located and what is the structure of the landscape around these optima.

<sup>2</sup> In section 4.4.2, we will show that these are really local optima

Table 4

Distances between the six best local optima known

	GLK	Davis	Das	ABK	Coe1	Coe2	average
GLK	0	20	62	56	39	34	28.6
Davis	20	0	58	56	45	42	33
Das	62	58	0	50	59	44	35.4
ABK	56	56	50	0	51	54	36.6
Coe1	39	45	59	51	0	51	43
Coe2	34	42	44	54	51	0	39

#### 4.4.1 Spatial Distribution

In this section, we study the spatial distribution of the six *blok*. Table 4 gives the Hamming distance between these local optima. All the distances are lower than 64 which is the distance between two random solutions. Local optima do not seem to be randomly distributed over the landscape. Some are nearby, for instance GLK and Davis rules, or GLK and Coe2 rules. But Das and GLK rules, or Coe1 and Das rules are far away from each other.

Figure 9 represents the centroid ( $C$ ) of the *blok*. The ordinate is the frequency of appearance of bit value 1 at each bit. On the right column we give the number of bits which have the same given frequency. For six random solutions in the fitness landscape, on average the centroid is the string with 0.5 on the 128 bits and the number of bits with the same frequency of 1 follows the binomial law 2, 12, 30, 40, 30, 12, 2. On the other hand, for the six best local optima, a large number of bits have the same value (29 instead of 4 in the random case) and a smaller number of bits (22 instead of 40 in the random case) are “undecided” with a frequency of 0.5.

The local optima from the *blok* are not randomly distributed over the landscape. They are all in a particular hyperspace of dimension 29 defined by the following schema  $S$ :

```
000*0*** 0***** 0***0*** *****1** 000***** 0*0***** ***** *****1*1
0*0***** ***** *****1** ***1*111 ***** ***1***1 *****1 ***1*111
```

We can thus suppose that the fixed bits are useful to obtain good solutions. Thus, the research of a good rule would be certainly more efficient in the subspace defined by schemata  $S$ . Before examining this conjecture, we are going to look at the landscape “from the top”.

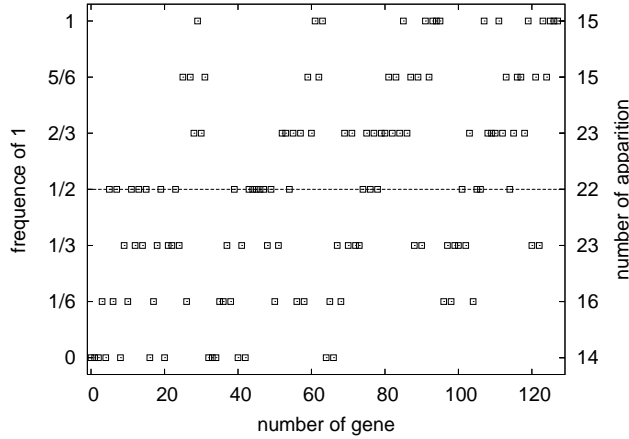


Fig. 9. Centroid  $C$  of the six *blok*. The squares give the frequency of 1 over the six *blok* as function of bits position. The right column gives the number of bits of  $C$  from the 128 which have the same frequency of 1 indicated by the ordinate in the ordinate (left column).

#### 4.4.2 Evolvability horizon

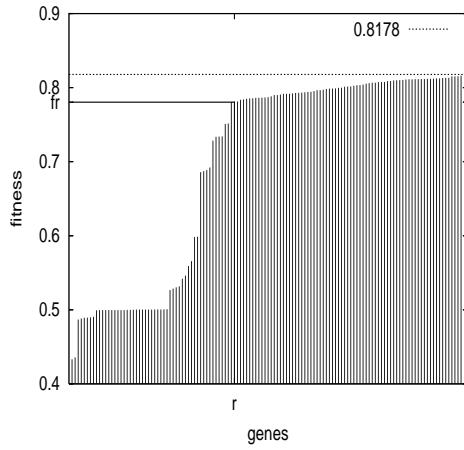
Altenberg defined evolvability as the ability to produce fitter variants [43]. The idea is to analyze the variation in fitness between one solution and its neighbors. Evolvability is said positive if neighbor solutions are fitter than the solution and negative otherwise. In this section, we define the *evolvability horizon* (EH) as the sequence of solutions, ordered by fitness values, which can be reached with one bitflip from the given solution. We obtain a graph with fitness values in ordinates and the corresponding neighbors in abscissa sorted by fitnesses (see figure 10).

Figure 10 shows the evolvability horizon of the *blok*. There is no neighbor with a better fitness value than the initial rule; so, all the best known rules are local optima. The fitness landscape has two important neutral networks at fitness 0 ( $NN_0$ ) and fitness 0.5 ( $NN_{0.5}$ ) (see section 4.3). No local optimum is nearby  $NN_0$ ; but a large part of neighbors of local optima (around 25% on average) are in  $NN_{0.5}$ . As a consequence a neutral local search on  $NN_{0.5}$  can potentially find a portal toward the *blok*.

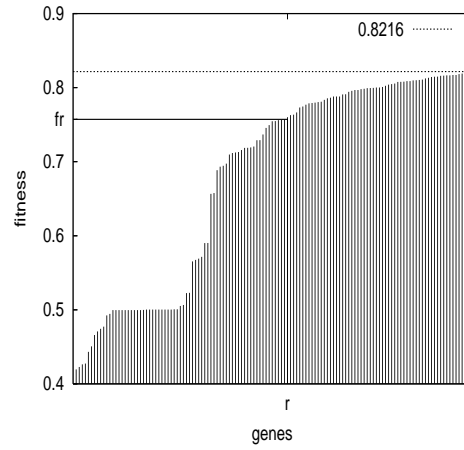
For each EH, there is an abscissa  $r$  from which the fitness value is roughly linear. Let  $f_r$  be this fitness value,  $f_{128}$  the fitness of the less sensible bit, and  $m$  the slope of the curve between abscissa  $r$  and 128. Thus, the smaller  $m$  and  $r$ , the better the neighbors. On the contrary, higher slope and  $r$  values mean that the neighbor fitness values decay faster.

For example evolvability is slightly negative from GLK, as it has a low slope and a small  $r$ . At the opposite, the Coe2 rule has a high slope ; this optimum is thus isolated and evolvability is strongly negative. We can imagine the space "view from GLK" flatter than the one from Coe2.

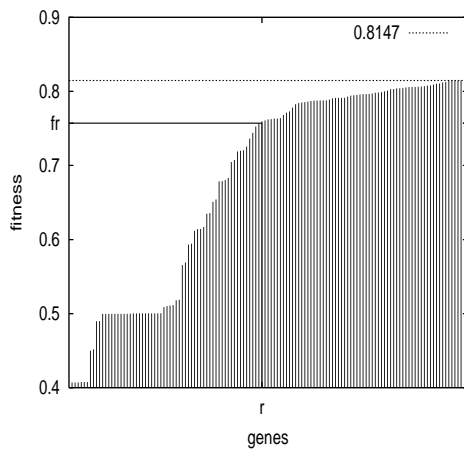
Although all EH seem to have roughly the same shape (see fig. 10), we can ask whether flipping one particular bit changes the fitness in the same way. For instance, for all the optima, flipping the first bit from '0' to '1' causes a drop in fitness. More generally, flipping each bit, we compute the average and standard deviation of the difference in fitnesses; results are sorted into increasing average differences (see figure 13-a). The bits which are the more deleterious are the ones with the smaller standard deviation, and as often as not, are in the schemata  $S$ . So, the common bits in the *blok* seem to be important to find good solution: for a metaheuristic, it would be of benefit to search in the subspace defined by the schema  $S$ .



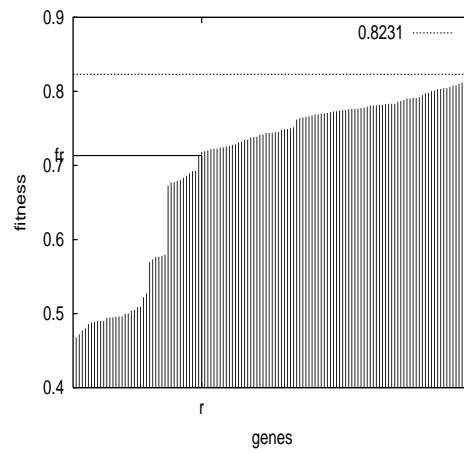
GLK:  $r = 53$ ,  $m = 0.000476$



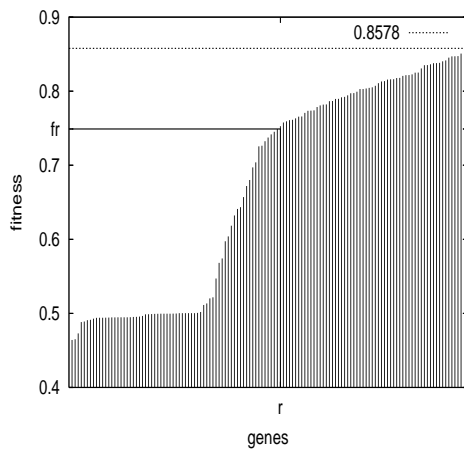
Das:  $r = 69$ ,  $m = 0.00106$



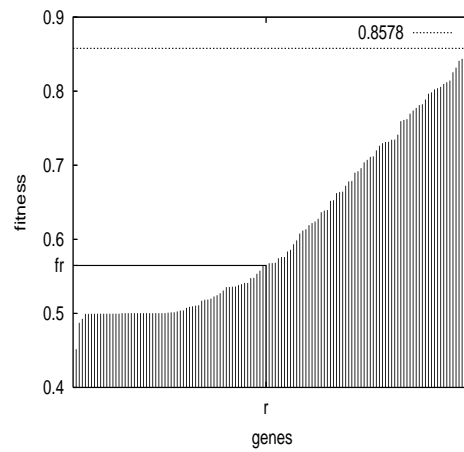
Davis:  $r = 62$ ,  $m = 0.000871$



ABK:  $r = 41$ ,  $m = 0.00114$



Coe1:  $r = 68$ ,  $m = 0.00170$



Coe2:  $r = 62$ ,  $m = 0.00424$

Fig. 10. Evolvability horizon for the 6 best known rules computed on binomial sample of ICs of size  $10^4$ . For each rule, the dotted horizontal line is its fitness. Row  $r$  and slope  $m$  (see text) are indicated above each figure.

## 5 Olympus Landscape

We have seen that there are many similarity inside the *blok*. In this section we will use this feature to define the *Olympus Landscape* and, to show and exploit, the relevant properties of this subspace.

### 5.1 Definition

The Olympus Landscape is a subspace of the Majority problem landscape. It takes its name from the *Mount Olympus* which is traditionally regarded as the heavenly home of the ancient Greek gods. Before defining this subspace we study the two natural symmetries of the majority problem.

The states 0 and 1 play the same role in the computational task ; so flipping bits in the entry of a rule and in the result have no effect on performance. In the same way, CAs can compute the majority problem according to right or left direction without changing performance. We denote  $S_{01}$  and  $S_{rl}$  respectively the corresponding operator of 0/1 symmetry and *right/left* symmetry. Let  $x = (x_0, \dots, x_{\lambda-1}) \in \{0, 1\}^\lambda$  be a solution with  $\lambda = 2^{2r+1}$ . The 0/1 symmetric of  $x$  is  $S_{01}(x) = y$  where for all  $i$ ,  $y_i = 1 - x_{\lambda-i}$ . The *right/left* symmetric of  $x$  is  $S_{rl}(x) = y$  where for all  $i$ ,  $y_i = x_{\sigma(i)}$  with  $\sigma(\sum_{j=0}^{\lambda-1} 2^{n_j}) = \sum_{j=0}^{\lambda-1} 2^{\lambda-1-n_j}$ . The operators are commutative:  $S_{rl}S_{01} = S_{01}S_{rl}$ . From the 128 bits, 16 are invariant by  $S_{rl}$  symmetry and none by  $S_{01}$ . Symmetry allows to introduce diversity without losing quality ; so evolutionary algorithm could be improved using the operators  $S_{01}$  and  $S_{rl}$ .

We have seen that some bit values could be useful to reach a good solution (see subsection 4.4.2), and some of those are among the 29 joint bits of the *blok* (see subsection 4.4.1). Nevertheless, two optima from the *blok* could be distant whereas some of theirs symmetrics are closer. Here the idea is to choose for each *blok* one symmetric in order to broadly maximize the number of joint bits. The optima GLK, Das, Davis and ABK have only 2 symmetrics because symmetrics by  $S_{01}$  and  $S_{rl}$  are equal. The optima Coe1 and Coe2 have 4 symmetrics. So, there are  $2^4 \cdot 4^2 = 256$  possible sets of symmetrics. Among these sets, we establish the maximum number of joint bits which is possible to obtain is 51. This “optimal” set contains the six *Symmetrics of Best Local Optima Known (blok')* presented in table 5. The Olympus Landscape is defined from the *blok'* as the schemata  $S'$  with the 51 fixed bits above:

```
000*0*0* 0****1** 0***00** **0**1** 000***** 0*0**1** ***** 0*0**1*1
0*0***** *****1** 111111** **0**111 ***** 0**1*1*1 11111**1 0*01*111
```



Table 5

Description of the 6 symmetric of the best local optima known (*blok'*) chosen to maximize the number of joint bits.

GLK' = <i>GLK</i>	00000000 01011111 00000000 01011111 00000000 01011111 00000000 01011111 00000000 01011111 11111111 01011111 00000000 01011111 11111111 01011111
Das' = <i>Das</i>	00000000 00101111 00000011 01011111 00000000 00011111 11001111 00011111 00000000 00101111 11111100 01011111 00000000 00011111 11111111 00011111
Davis' = <i>S</i> <sub>01</sub> ( <i>Davis</i> )	00000000 00001111 01110011 00001111 00000000 00011111 11111111 00001111 00000000 00001111 11111111 00001111 00000000 00011111 11111111 00011111
ABK' = <i>S</i> <sub>01</sub> ( <i>ABK</i> )	00000000 01010101 00000000 01010101 00000000 01010101 00000000 01010101 01011111 01010101 11111111 01011111 01011111 01010101 11111111 01011111
Coel' = <i>Coe1</i>	00000001 00010100 00110000 11010111 00010001 00001111 00111001 01010111 00000101 10110100 11111111 00010111 11110001 00111101 11111001 01010111
Coe2' = <i>S</i> <sub>rl</sub> ( <i>Coe2</i> )	00010100 01010101 00000000 11001100 00001111 00010100 00000010 00011111 00010111 00010101 11111111 11001111 00001111 00010111 11111111 00011111

Table 6

Distances between the symmetric of the Best Local Optima Known (*blok'*)

	GLK'	Davis'	Das'	ABK'	Coel'	Coe2'	average
GLK'	0	20	26	24	39	34	23.8
Davis'	20	0	14	44	45	42	27.5
Das'	26	14	0	50	43	44	29.5
ABK'	24	44	50	0	39	26	30.5
Coel'	39	45	43	39	0	49	35.8
Coe2'	34	42	44	26	49	0	32.5

The Olympus Landscape is a subspace of dimension 77. All the fixed bits from schema *S* (see section 4.4.1) are fixed in the schema *S'* with the same value except for the bit number 92.

Table 6 gives the Hamming distance between the six *blok'*. All the distances are shorter than those between the *blok* (see table 4). On average, distance between the rules is 29.93 for the *blok'* and 35.93 for the *blok*. Rules in the *blok'* are closer to each other with the first four rules being closer than the two last obtained by coevolution.

The centroid of the *blok'* (*C'*), has less “undecided” bits (13) and more fixed bits (51) than the centroid *C* (see figure 11). Distances between *C'* and the

$blok'$  (see figure 12) are shorter than the one between  $C$  and the  $blok$ . The six  $blok'$  are more concentrated around  $C'$ . Note that, although Coe1 and Coe2 are the highest local optima, they are the farthest from  $C'$ , although above distance 38.5 which is the average distance between  $C'$  and a random point in the Olympus landscape. This suggest one should search around the centroid while keeping one's distance from it.

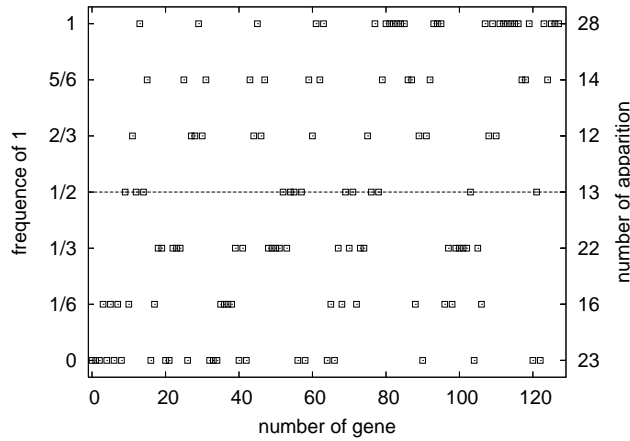


Fig. 11. Centroid of the  $blok'$ . The squares give the frequency of 1 over the  $blok'$  as function of bit position. The right column gives the number of bits of  $C'$  from the 128 which have the same frequency of 1 indicated in the ordinate (left column).

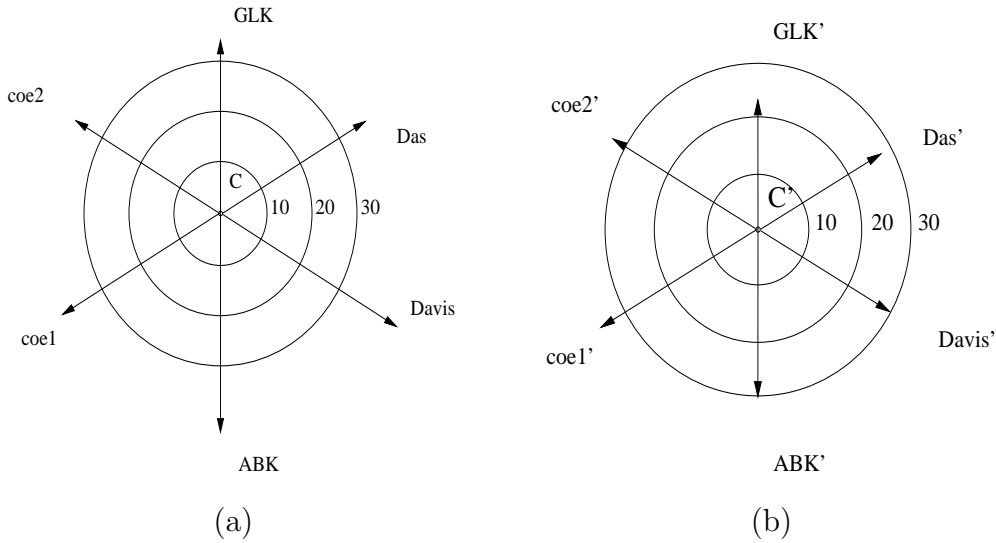


Fig. 12. Distance between the  $blok$  and the centroid  $C$  (a) and distance between  $blok'$  and the centroid  $C'$  (b).

The figure 13-b shows the average and standard deviation over the six  $blok'$  of evolvability per bit. The one over  $blok'$  have the same shape than the mean curve over  $blok$ , only the standard deviation is different, on the average standard deviation is 0.08517 for  $blok$  and 0.08367 for  $blok'$ . The Evolvability Horizon is more homogeneous for the  $blok'$  than for the  $blok$ .

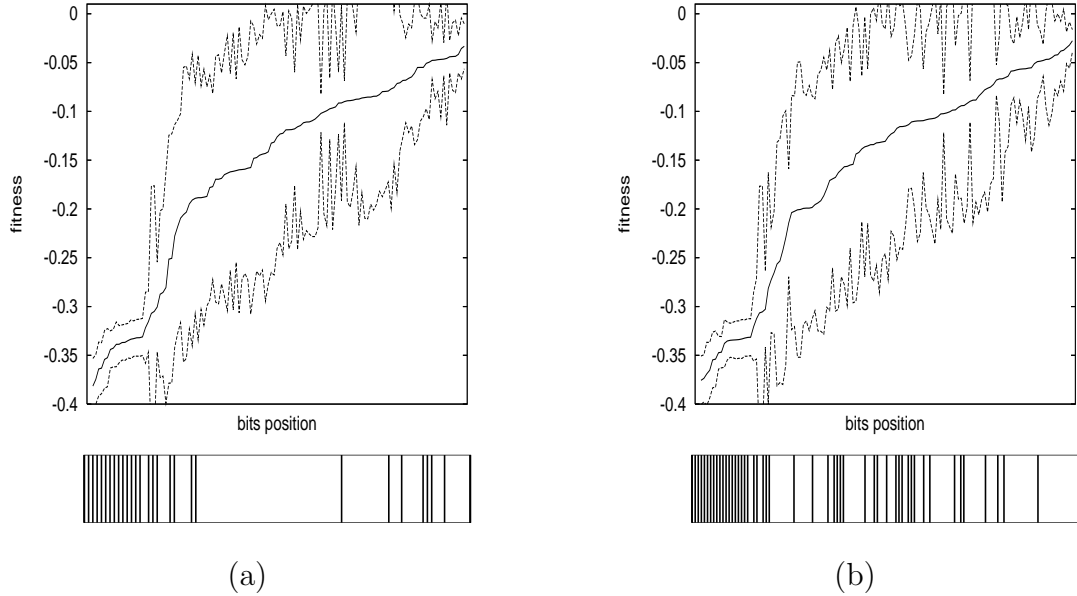


Fig. 13. Average with standard deviation of evolvability per bit over the *blok* (a) and over the *blok'* (b). The boxes below the figures indicate with a vertical line which bits are in schema  $S$  (a) and schema  $S'$  (b).

The Olympus contains the *blok'* which are the best rules known and is a subspace with unusually high fitness values easy to find as we will show in the next sections. As such, it is a potentially interesting subspace to search. However, this does not mean that the global optimum of the whole space must necessarily be found there.

## 5.2 Statistical Measures on the Olympus Landscape

In this section we present the results of the main statistical indicators restricted to the Olympus subspace.

### 5.2.1 Density of States and Neutrality

Figure 14-a has been obtained by sampling the space uniformly at random. The DOS is more favorable in the Olympus with respect to the whole search space (see section 3.3.1) although the tail of the distribution is fast-decaying beyond fitness value 0.5.

The neutral degree of  $10^3$  solutions randomly chosen in Olympus is depicted in figure 14-b. Two important  $NN$  are located around fitnesses 0 and 0.5 where the neutral degree is over 80. On average the neutral degree is 51.7. For comparison, the average neutral degree for NKq landscapes with  $N = 64$ ,

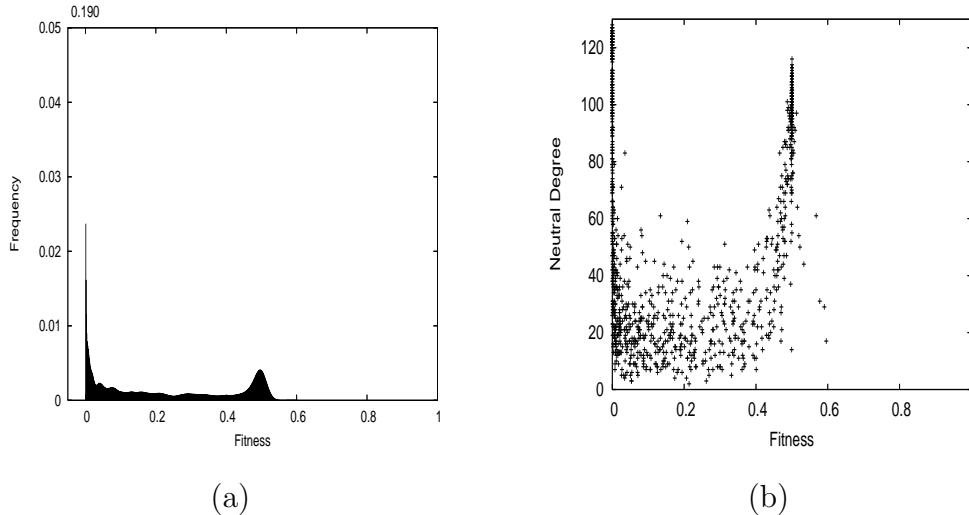


Fig. 14. Density of states (a) and Neutral degree of solutions as a function of fitness (b) on Olympus.  $10^3$  random solutions from Olympus were evaluated on a sample of ICs of size  $10^4$ .

$K = 2$  and  $q = 2$  is 21.3. Thus, the neutral degree is high on the Olympus and this should be exploited to design metaheuristics fitting the problem.

### 5.2.2 Fitness Distance Correlation

FDC has been calculated on a sample of 4000 randomly chosen solutions belonging to the Olympus. Results are summarized in table 7. The first six lines of this table reports the FDC where distance is calculated from one particular solution in the *blok'*. The line before last reports FDC where distance is computed from the nearest optimum for each individual belonging to the sample. The last line is the FDC, relative to euclidean distance, to the centroid  $C'$ . Two samples of solutions were generated: *Osample*, where solutions are randomly chosen in the Olympus and *Csample*, where each bit of a solution has probability to be '1' according to the centroid distribution.

With the sample based on the Olympus, the FDC is lower, meaning that improvement is easier for the *blok'* than for the overall landscape (see section 4.2) except for *Coe1*. FDC with  $GLK'$ ,  $ABK'$ , nearest, or  $C'$  is over the threshold  $-0.15$ . For *Csample*, all the FDC values are lower than on *Osample*. Also, except for *Coe1'*, the FDC is over the limit  $-0.15$ . This correlation shows that fitness gives useful information to reach the local optima. Moreover, as the FDC from the centroid is high (see also figure 15), fitness leads to the centroid  $C'$ . We can conclude that on the Olympus, fitness is a reliable guide to drive searcher toward the *blok'* and its centroid.

Table 7

FDC where distance is calculated from one particular solution in the  $blok'$ , the nearest, or from the centroid of  $blok'$ . Two samples of solutions of size  $10^4$  were generated:  $Osample$  and  $Csample$ .

	$Osample$	$Csample$
GLK'	-0.15609	-0.19399
Davis'	-0.05301	-0.15103
Das'	-0.09202	-0.18476
ABK'	-0.23302	-0.23128
Coe1'	-0.01087	0.077606
Coe2'	-0.11849	-0.17320
nearest	-0.16376	-0.20798
$C'$	-0.23446	-0.33612

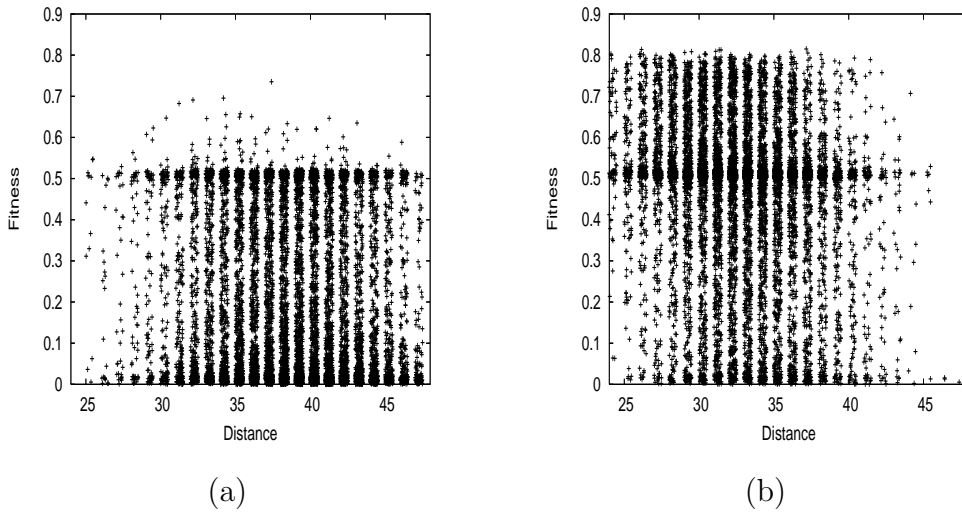


Fig. 15. FDC scatter-plot computed with euclidean distance to the centroid  $C'$ . Two samples of solutions of size  $10^4$  were generated:  $Osample$  in (a) and  $Csample$  in (b).

### 5.2.3 Correlation structure analysis: ARMA model

In this section we analyze the correlation structure of the Olympus landscape using the Box-Jenkins method (see section 3.3.4). The starting solution of each random walk is randomly chosen on the Olympus. At each step one random bit is flipped such that the solution belongs to the Olympus and the fitness is computed over a new sample of ICs of size  $10^4$ . Random walks have length  $10^4$  and the approximated two-standard-error bound used in the Box-Jenkins

approach<sup>3</sup> is  $\pm 2/\sqrt{10^4} = 0.02$ .

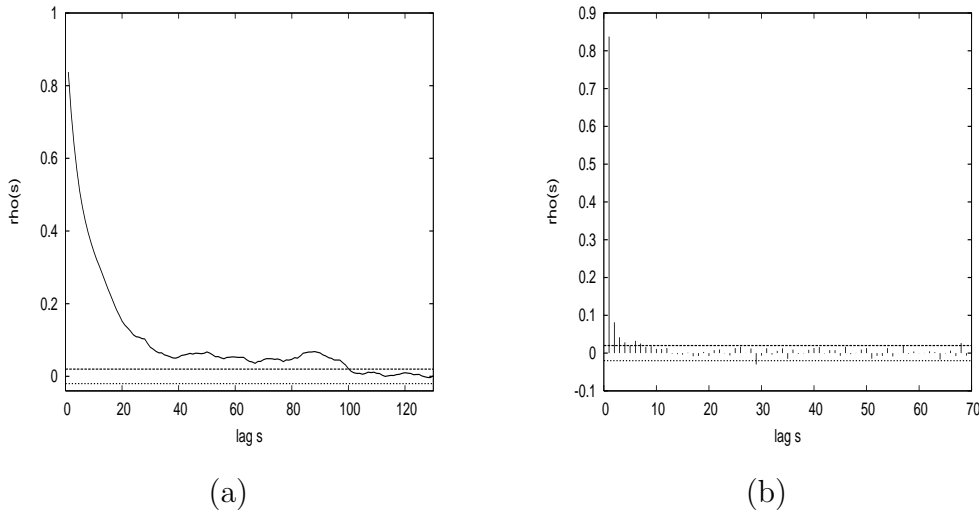


Fig. 16. Autocorrelation (a) and partial autocorrelation (b) function of random walk on Olympus.

**Identification** Figure 16 shows the estimated autocorrelation (acf) in (a) and partial autocorrelation (pacf) in (b). The acf decreases quickly. The first-order autocorrelation is high 0.838 and it is of the same order of magnitude as for NK-landscapes with  $N = 100$  and  $K = 7$  [33]. The acf is closed to the two-standard-error bound from lag 40 and cuts this bound at lag 101 which is the correlation length. The fourth-order partial autocorrelation is close to the two-standard-error bound. The partial autocorrelation after lag 4 tapers off to zero. This suggests an  $AR(3)$  or  $AR(4)$  model. The t-test on the estimation coefficients of both model  $AR(3)$  and  $AR(4)$  are significant, but p-values of Box-Jenkins test show that residuals are not white noises. Thus, we tried to fit an  $ARMA(3, 1)$  model. The last autoregressive coefficient  $\alpha_3$  of the model is close to non-significant. In order to decide the significance of this coefficient, we extracted the sequence of the 980 first steps of the walk and estimated the model again. The t-test of  $\alpha_3$  drops to 0.0738. So  $\alpha_3$  is non significant and not necessary. We thus end up with an  $ARMA(2, 1)$  model.

**Estimation** The results of the  $ARMA(2, 1)$  model estimation is:

$$y_t = 0.00281 + 1.5384y_{t-1} - 0.5665y_{t-2} + \epsilon_t - 0.7671\epsilon_{t-1} \quad (20.4) \quad (32.6) \quad (13.7) \quad (18.1)$$

<sup>3</sup> All the statistic results have been obtained with the R programming environment (see <http://r-project.org>)

where  $y_t = f(x_t)$ . The t-test statistics of the significance measure are given below the coefficients in parentheses: they are all significant.

**Diagnostic checking** For the  $ARMA(2, 1)$  model estimation, the Akaike Information Criterion (aic) is  $-16763.63$  and the variance of residuals is  $Var(\epsilon_t) = 0.01094$ . Figure 17 shows the residuals autocorrelation and p-value of Box-Jenkins test for the estimates of the  $ARMA(2, 1)$  model. The acf of residuals are all well within the two-standard-error bound expected for  $h = 28$ . So, the residuals are not correlated. The p-value of Box-Jenkins test are quite good over 0.25. The residuals can be considered as white noises. The value of R-square  $\bar{R}^2 = 0.7050$  is high and higher in comparison to the synchronizing-CA problem [11] where  $\bar{R}^2$  is equal to 0.38 and 0.35.

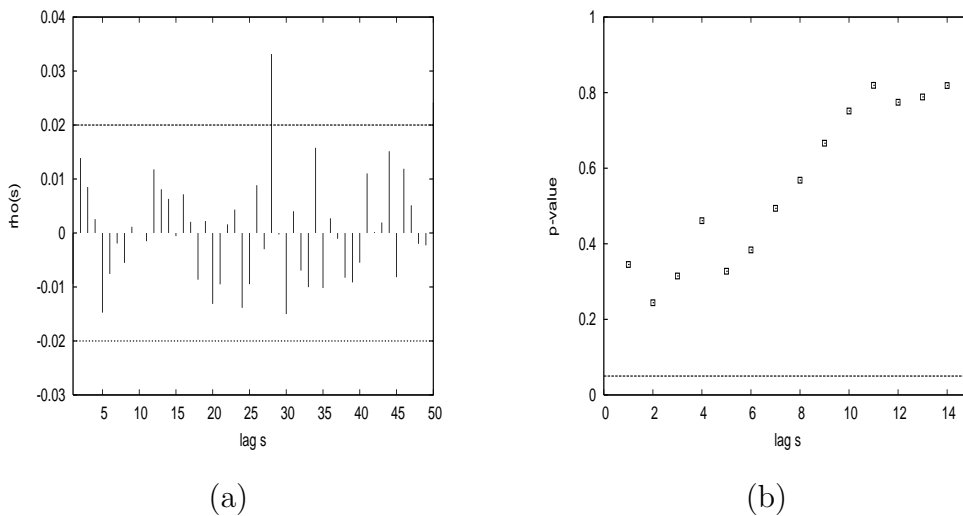


Fig. 17. Autocorrelation function of residuals (a) and p-value of Ljung-Box statistic (b) for model  $ARMA(2, 1)$ .

We can conclude that the model  $ARMA(2, 1)$  accurately fits the fitness values given by random walks over the Olympus Landscape. The high correlation shows that a local search heuristic is adequate to find good rules on the Olympus. An autoregressive model of size 2 means that we need two steps to predict the fitness value; so, as suggested by Hordijk, it would be possible to construct more efficient local search taking into account this information. The moving average component has never been found in other landscape fitness analysis. What kind of useful information does it give? Maybe information on nature of neutrality. Future work should study those models in more detail.

#### 5.2.4 Fitness Cloud and NSC

Figure 18 shows the scatterplot and the segments  $\{S_1, S_2, \dots, S_{m-1}\}$  used to calculate the NSC on the Olympus (see section 4.1). No segment has a negative

slope, it seems easy for a local search heuristic to reach fitness values close to 0.6. A comparison of this fitness cloud with the one shown in figure 5 (where the whole fitness landscape was considered, and not only the Olympus) is illuminating: if the whole fitness landscape is considered, then it is “hard” to find solutions with fitness up to 0.5 ; on the other hand, if only solutions belonging to the Olympus are considered, the problem becomes much easier : it is now “easy” to access to solutions with fitness greater than 0.5.

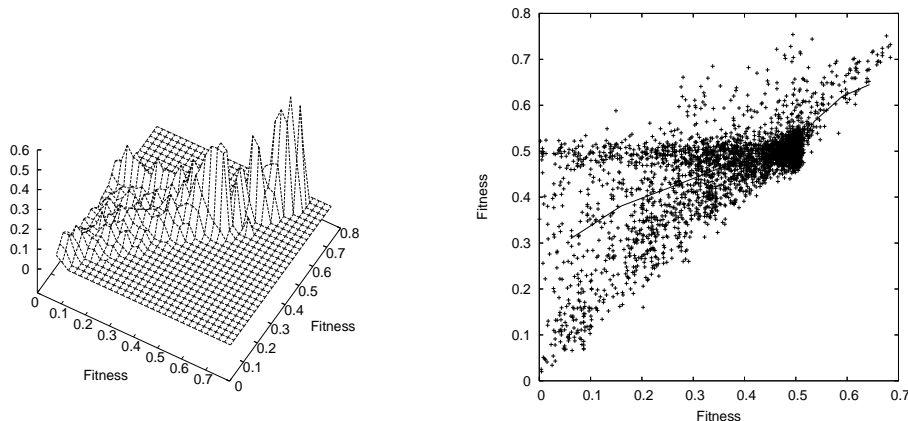


Fig. 18. Fitness Cloud and Scatterplot used to calculate the NSC value on Olympus.

### 5.3 Genetic Algorithms on the Olympus Landscape

In this section, we use different implementations of a genetic algorithm to confirm our analysis of the Olympus and to find good rules to solve the Majority problem. All implementations are based on a simple GA used by Mitchell *et al.* in [5].

A population of 200 rules is used and fitness is computed by the success rate on unbiased sample of ICs. New individuals are first evaluated on sample of size  $10^3$ . At each generation, a new sample of size  $10^3$  is generated. If an individual stays in the population during  $n$  generations, its fitness is computed from a sample of size  $10^3 n$  which corresponds to the cumulative sample of ICs. In all cases, initialization and mutation are restricted to the Olympus. In order to obtain, on average, one bit mutation per individuals on Olympus, the mutation probability per bit is  $1/77$ . One point crossover is used with rate 0.6. We use three implementations of this GA : the *Olympus based GA* (oGA), the *Centroid based GA* (cGA) and the *Neutral based GA* (nGA). The oGA allows to test the usefulness of searching in the Olympus, the cGA tests the efficiency of searching around the centroid and the nGA exploits the considerable neutrality of the landscape.



**Initial population** For 'Olympus' and 'Neutral' based GAs, the initial population is randomly chosen in the Olympus. For cGA, the initial population is generated according to the centroid: probability to have '1' at a given bit position is given by  $C'$  value at the same position. In the same way, if one bit is mutated, its new value is generated according to  $C'$ .

**Selection schema** oGA and cGA both use the same selection scheme as in Mitchell *et al.*. The top of 20 % of the rules in the population, so-called *elite rules*, are copied without modification to the next generation and the remaining 80 % for the next generation were formed by random choice in the elite rules. The selection scheme is similar to the  $(\mu + \lambda)$  selection method. The nGA uses tournament selection of size 2. It takes into account the neutrality of the landscape: if the fitnesses of two solutions are not statistically different using the t-test of 95 % of confidence, we consider that they are equal and choose the individual which is the more distant from the centroid  $C'$ ; this choice allows to spread the population over the neutral network. Otherwise the best individual is chosen. nGA uses elitism where the top 10 % of different rules in the population are copied without modification.

**Performance** Each GA run lasts  $10^3$  generations and 50 independent runs were performed. For each run, we have performed post-processing. At each generation, the best individuals are evaluated on new sample of  $10^4$  ICs and the average distance between all pairs of individuals is computed. Best and average performances with standard deviation are reported in table 8. We also computed the percentage of runs which are able to reach a given fitness level and the average number of generations to reach this threshold (see figure 19).

Table 8

GA performances computed on sample of size  $10^4$ .

GA	Average	Std Deviation	Best
oGA	0.8315	0.01928	0.8450
cGA	0.8309	0.00575	0.8432
nGA	0.8323	0.00556	0.8472

All GAs have *on average* better performances than the optima find by human or by genetic programming. As expected, searching in the Olympus is useful to find good rules. All the GAs have nearly the same average performances. However, standard deviation of 'Olympus' is four times larger than standard deviation of 'Centroid'. As it is confirmed by the mean distance between individuals, the cGA quickly loses diversity (see fig. 20). On the other hand, 'Neutral' GA keep genetic diversity during runs. Figure 19 shows that for the most interesting threshold over 0.845, 'Neutral' have more runs able

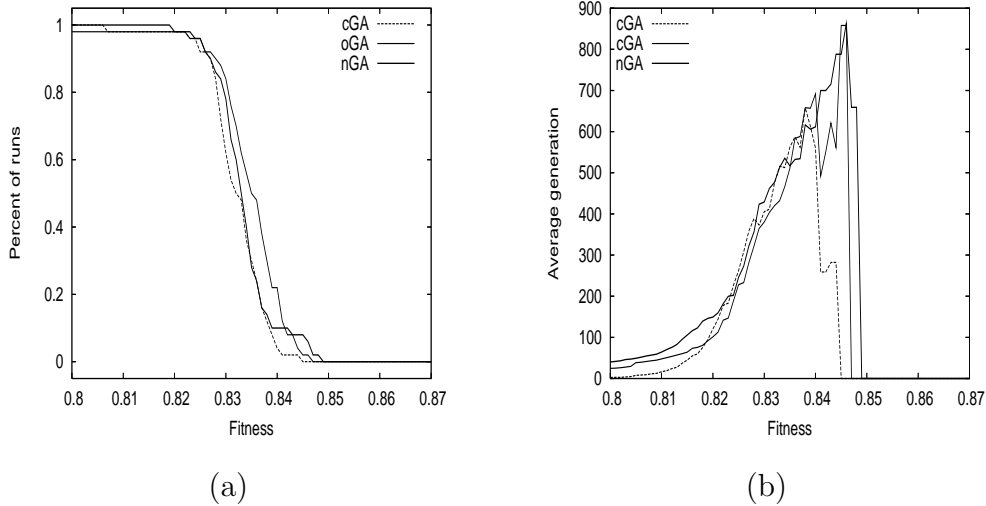


Fig. 19. Statistics percentage of runs (a) and number of generations (b) for the evolutionary emergence of CAs with performances exceeding various fitness thresholds.

to overcome the threshold (3/50) than 'Olympus' (1/50) or 'Centroid' (0/50). Even though we cannot statistically compare the best performance of different GAs, the best rule was found by the nGA with performance of 0.8472 to be compared to the second best rule *Coe1*.

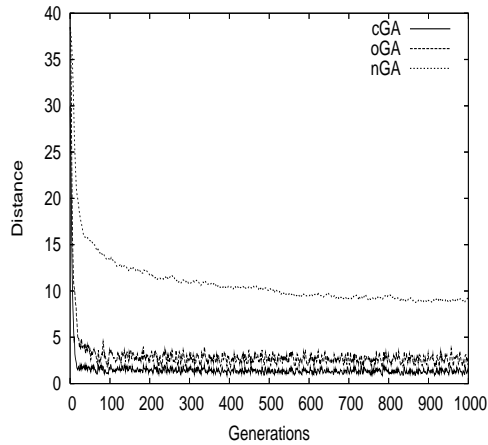


Fig. 20. Average hamming distance between individuals of population as a function of generation.

These experimental results using GAs confirm that it is easy to find good rules in the Olympus Landscape. During all the 50 independent runs, we find a lot of different CAs with performance over 0.82: 3642 for oGA, 1854 for cGA and 11437 for nGA. A 'low' computational effort is needed to obtain such CAs. A run takes about 8 hours on PC at 2 GHz. Taking the neutrality into account allows to maintain the diversity of the population and increases the chance to reach rules with high performance.

## 6 Conclusions

Cellular automata are capable of universal computation and their time evolution can be complex and unpredictable. We have studied CAs that perform the computational Majority task. This task is a good example of the phenomenon of emergence in complex systems is. In this paper we have taken an interest in the reasons that make this particular fitness landscape a difficult one. The first goal was to study the landscape as such, and thus it is ideally independent from the actual heuristics used to search the space. However, a second goal was to understand the features a good search technique for this particular problem space should possess. We have statistically quantified in various ways some features of the landscape and the degree of difficulty of optimizing. The neutrality of the landscape is high, and the neutral network topology is not completely random. The main observation was that the landscape has a considerable number of points with fitness 0 or 0.5 which means that investigations based on sampling techniques on the whole landscape are unlikely to give good results.

In the second part we have studied the landscape *from the top*. Although it has been proved that no CA can perform the task perfectly, six efficient CAs for the majority task have been found either by hand or by using heuristic methods, especially evolutionary computation. Exploiting similarities between these CAs and symmetries in the landscape, we have defined the *Olympus* landscape as a subspace of the Majority problem landscape which is regarded as the "heavenly home" of the six *symmetric of best local optima known (blok')*. Then, we have measured several properties of the Olympus landscape and we have compare with those of the full landscape, finding that there are less solutions with fitness 0. FDC shows that fitness is a reliable guide to drive a searcher toward the *blok'* and its centroid. An *ARMA(2,1)* model has been used to describe the fitness/fitness correlation structure. The model indicates that local search heuristics are adequate for finding good rules. Fitness clouds and nsc confirm that it is easy to reach solutions with fitness higher than 0.5. Although it is easier to find relevant CAs in this subspace than in the complete landscape, there are structural reasons that prevents a searcher from finding overfitted GAs in the Olympus. Finally, we have studied the dynamics and performances of three Genetic Algorithms on the Olympus in order to confirm our analysis and to find efficient CAs for the Majority problem with low computational effort.

Beyond this particular optimization problem, the method presented in this paper could be generalized. Indeed, in many optimization problems, several efficient solutions are available, and we can make good use of this set to design an "Olympus subspace" in the hope of finding better solutions or finding good solutions more quickly.

## References

- [1] B. Chopard, M. Droz, Cellular Automata Modeling of Physical Systems, Cambridge University Press, Cambridge, UK, 1998.
- [2] S. Wolfram, A New Kind of Science, Wolfram Media, 2002.
- [3] M. Land, R. K. Belew, No perfect two-state cellular automata for density classification exists, *Physical Review Letters* 74 (25) (1995) 5148–5150.
- [4] M. Mitchell, P. T. Hraber, J. P. Crutchfield, Revisiting the edge of chaos: Evolving cellular automata to perform computations, *Complex Systems* 7 (1993) 89–130.
- [5] M. Mitchell, J. P. Crutchfield, P. T. Hraber, Evolving cellular automata to perform computations: Mechanisms and impediments, *Physica D* 75 (1994) 361–391.
- [6] M. Sipper, The evolution of parallel cellular machines: Toward evolware, *BioSystems* 42 (1997) 29–43.
- [7] D. Andre, F. H. Bennett III, J. R. Koza, Discovery by genetic programming of a cellular automata rule that is better than any known rule for the majority classification problem, in: J. R. Koza, D. E. Goldberg, D. B. Fogel, R. L. Riolo (Eds.), *Genetic Programming 1996: Proceedings of the First Annual Conference*, The MIT Press, Cambridge, MA, 1996, pp. 3–11.
- [8] H. Juillé, J. B. Pollack, Coevolutionary learning: a case study, in: *ICML '98 Proceedings of the Fifteenth International Conference on Machine Learning*, Morgan Kaufmann, San Francisco, CA, 1998, pp. 251–259.
- [9] R. Breukelaar, T. Bäck, Using a genetic algorithm to evolve behavior in multi dimensional cellular automata: emergence of behavior, in: H.-G. Beyer, U.-M. O'Reilly (Eds.), *Genetic and Evolutionary Computation Conference, GECCO 2005, Proceedings*, Washington DC, USA., ACM, 2005, pp. 107–114.
- [10] J. P. Crutchfield, M. Mitchell, R. Das, Evolutionary design of collective computation in cellular automata, in: J. P. Crutchfield, P. Schuster (Eds.), *Evolutionary Dynamics: Exploring the Interplay of Selection, Accident, Neutrality, and Function*, Oxford University Press, Oxford, UK, 2003, pp. 361–411.
- [11] W. Hordijk, Correlation analysis of the synchronizing-ca landscape, *Physica D* 107 (1997) 225–264.
- [12] R. Das, J. P. Crutchfield, M. Mitchell, J. E. Hanson, Evolving globally synchronized cellular automata, in: L. J. Eshelman (Ed.), *Proceedings of the Sixth International Conference on Genetic Algorithms*, Morgan Kaufmann, San Francisco, CA, 1995, pp. 336–343.
- [13] M. S. Capcarrère, M. Sipper, M. Tomassini, Two-state,  $r=1$  cellular automaton that classifies density, *Physical Review Letters* 77 (24) (1996) 4969–4971.

- [14] H. Fukś, Solution of the density classification problem with two cellular automata rules, *Physical Review E* 55 (3) (1997) 2081–2084.
- [15] N. H. Packard, Adaptation toward the edge of chaos, in: J. A. S. Kelso, A. J. Mandell, M. F. Shlesinger (Eds.), *Dynamic Patterns in Complex Systems*, World Scientific, Singapore, 1988, pp. 293–301.
- [16] J. E. Hanson, J. P. Crutchfield, Computational mechanics of cellular automata: An example, Tech. Rep. 95-10-95, Santa Fe Institute Working Paper (1995).
- [17] W. Hordijk, J. P. Crutchfield, M. Mitchell, Mechanisms of emergent computation in cellular automata, in: A. Eiben, T. Bäck, M. Schoenauer, H.-P. Schwefel (Eds.), *Parallel Problem Solving from Nature- PPSN V*, Vol. 1498 of *Lecture Notes in Computer Science*, Springer-Verlag, Heidelberg, 1998, pp. 613–622.
- [18] P. F. Stadler, Fitness landscapes, in: M. Lässig, A. Valleriani (Eds.), *Biological Evolution and Statistical Physics*, Vol. 585 of *Lecture Notes Physics*, Springer-Verlag, Heidelberg, 2002, pp. 187–207.
- [19] T. Jones, Evolutionary algorithms, fitness landscapes and search, Ph.D. thesis, University of New Mexico, Albuquerque (1995).
- [20] M. Kimura, *The Neutral Theory of Molecular Evolution*, Cambridge University Press, Cambridge, UK, 1983.
- [21] C. M. Reidys, P. F. Stadler, Neutrality in fitness landscapes, *Applied Mathematics and Computation* 117 (2-3) (2001) 321–350.
- [22] H. Rosé, W. Ebeling, T. Asselmeyer, The density of states - a measure of the difficulty of optimisation problems, in: *Parallel Problem Solving from Nature*, 1996, pp. 208–217.
- [23] E. Van Nimwegen, J. Crutchfield, M. Huynen, Neutral evolution of mutational robustness, in: *Proc. Nat. Acad. Sci. USA* 96, 1999, pp. 9716–9720.
- [24] C. O. Wilke, Adaptive evolution on neutral networks, *Bull. Math. Biol* 63 (2001) 715–730.
- [25] M. Huynen, Exploring phenotype space through neutral evolution, *J. Mol. Evol.* 43 (1996) 165–169.
- [26] U. Bastolla, M. Porto, H. E. Roman, M. Vendruscolo, Statistical properties of neutral evolution, *Journal Molecular Evolution* 57 (S) (2003) 103–119.
- [27] L. Altenberg, Fitness distance correlation: an instructive counterexample, in: T. Back (Ed.), *Seventh International Conference on Genetic Algorithms*, Morgan Kaufmann, 1997, pp. 57–64.
- [28] R. Quick, V. Rayward-Smith, G. Smith, Fitness distance correlation and ridge functions, in: A. E. Eiben et al. (Ed.), *Fifth Conference on Parallel Problems Solving from Nature (PPSN'98)*, Vol. 1498 of *Lecture Notes in Computer Science*, Springer-Verlag, Heidelberg, 1998, pp. 77–86.

- [29] M. Clergue, P. Collard, Ga-hard functions built by combination of trap functions, in: D. B. Fogel, M. A. El-Sharkawi, X. Yao, G. Greenwood, H. Iba, P. Marrow, M. Shackleton (Eds.), Proceedings of the 2002 Congress on Evolutionary Computation CEC2002, IEEE Press, 2002, pp. 249–254.
- [30] E. D. Weinberger, Local properties of kauffman’s NK model, a tuneably rugged energy landscape, *Physical Review A* 44 (10) (1991) 6399–6413.
- [31] E. D. Weinberger, Correlated and uncorrelated fitness landscapes and how to tell the difference, in: *Biological Cybernetics*, 1990, pp. 63:325–336.
- [32] G. Box, G. M. Jenkins, *Time series analysis, forecasting and control*, Holden Day, San Francisco, 1970.
- [33] W. Hordijk, A measure of landscapes, *Evolutionary Computation* 4 (4) (1996) 335–360.
- [34] S. Verel, P. Collard, M. Clergue, Where are bottleneck in NK fitness landscapes?, in: R. Sarker, R. Reynolds, H. Abbass, K. C. Tan, B. McKay, D. Essam, T. Gedeon (Eds.), Proceedings of the 2003 Congress on Evolutionary Computation CEC2003, IEEE Press, Canberra, 2003, pp. 273–280.
- [35] N. Madras, *Lectures on Monte Carlo Methods*, American Mathematical Society, Providence, Rhode Island, 2002.
- [36] L. Vanneschi, M. Clergue, P. Collard, M. Tomassini, S. Verel, Fitness louds and problem hardness in genetic programming, in: Proceedings of the Genetic and Evolutionary Computation Conference, GECCO’04, LNCS, Springer-Verlag, 2004, pp. 690–701.
- [37] L. Vanneschi, *Theory and practice for efficient genetic programming*, Ph.D. thesis, Faculty of Science, University of Lausanne, Switzerland (2004).
- [38] P. Gacs, G. L. Kurdyumov, L. A. Levin, One-dimensional uniform arrays that wash out finite islands, *Problemy Peredachi Informatsii* 14 (1978) 92–98.
- [39] R. Das, M. Mitchell, J. P. Crutchfield, A genetic algorithm discovers particle-based computation in cellular automata, in: Y. Davidor, H.-P. Schwefel, R. Männer (Eds.), *Parallel Problem Solving from Nature- PPSN III*, Vol. 866 of Lecture Notes in Computer Science, Springer-Verlag, Heidelberg, 1994, pp. 344–353.
- [40] H. Juillè, J. B. Pollack, Coevolving the ideal trainer: Application to the discovery of cellular automata rules, in: J. R. Koza et al. (Ed.), *Genetic Programming 1998: Proceedings of the Third Annual Conference*, Morgan Kaufmann, University of Wisconsin, Madison, Wisconsin, USA, 1998, pp. 519–527.
- [41] P. Collard, S. Verel, M. Clergue, How to use the scuba diving metaphor to solve problem with neutrality ?, in: R. L. de Mántaras, L. Saitta (Eds.), Proceedings of the 2004 European Conference on Artificial Intelligence (ECAI04), IOS Press, Valence, Spain, 2004, pp. 166–170.

- [42] L. Barnett, Netcrawling - optimal evolutionary search with neutral networks, in: Proceedings of the 2001 Congress on Evolutionary Computation CEC2001, IEEE Press, COEX, World Trade Center, 159 Samseong-dong, Gangnam-gu, Seoul, Korea, 2001, pp. 30–37.
- [43] L. Altenberg, The evolution of evolvability in genetic programming, in: K. E. Kinneer, Jr. (Ed.), Advances in Genetic Programming, MIT Press, 1994, Ch. 3, pp. 47–74.