

## Appendix 3

### Location of the Shine-Dalgarno sequence upstream of the start codon for genes harbouring a putative strong $\sigma 70$ promoter - trends over 32 prokaryotic genomes -

In Figure 3.1 (a), we were careful to outline the different trends observed through different colours.

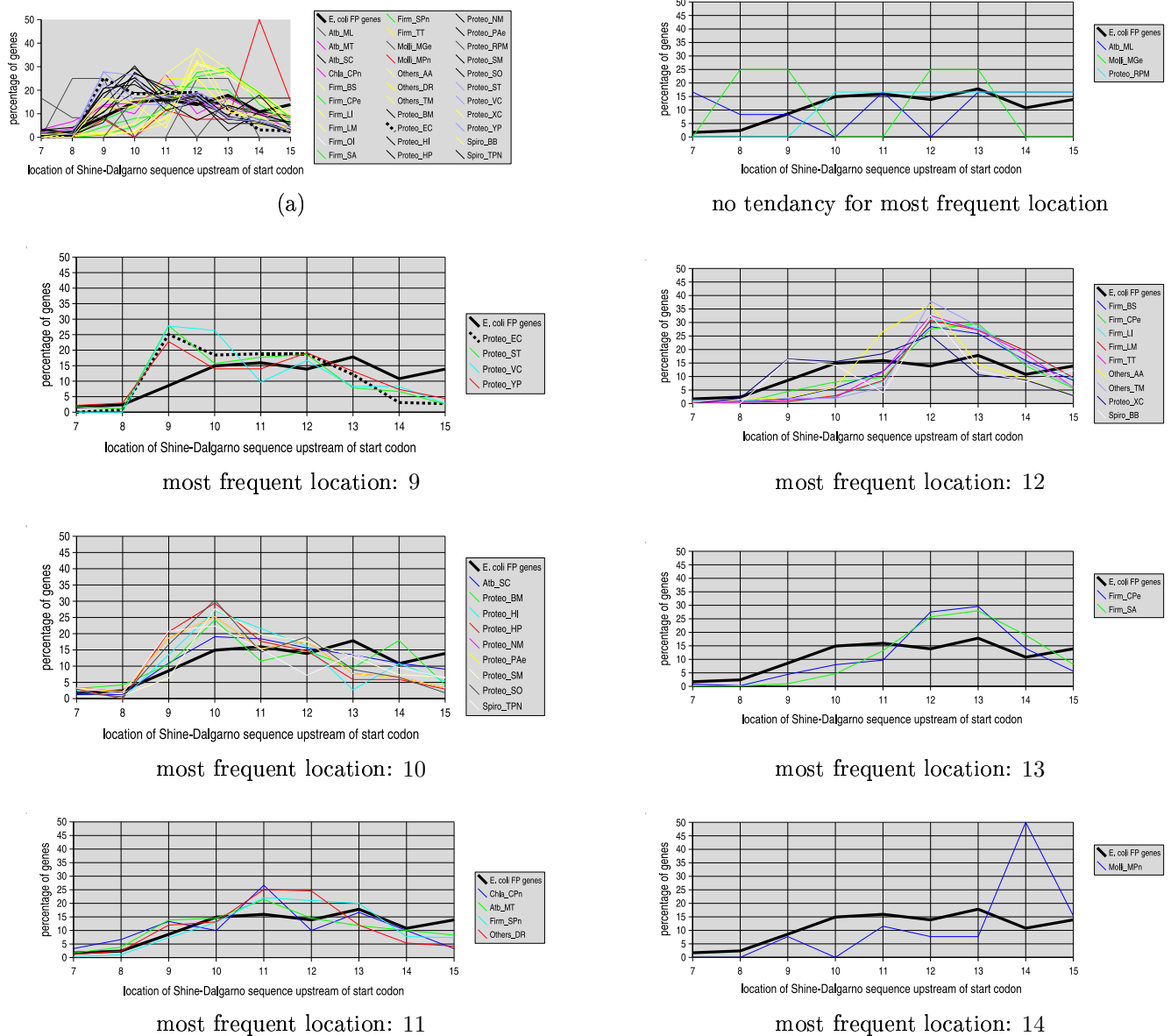


Figure 3.1 Locations of the Shine-Dalgarno sequence upstream of the start codon - Comparison between 32 prokaryotic genomes, regarding genes harbouring putative strong  $\sigma 70$  promoters (PSP genes), and comparison with genes of *E. coli* genome harbouring functional  $\sigma 70$  promoters (FP genes). (a) Depending on its most frequent location, each curve is drawn in a specific colour: 9 - violet, 10 - black, 11 - pink, 12 - yellow, 13 - green, 14 - red, no tendency - grey. The thick black dotted curve with the most frequent location equal to 9 is relative to *E. coli* PSP genes. The thick black continuous curve with the most frequent location equal to 13 is relative to *E. coli* FP genes. See Figure 3 for species nomenclature.