



**HAL**  
open science

# Gas-Phase Reactions Between Thiourea and $\text{Ca}^{2+}$ : New Evidence for the Formation of $[\text{Ca}(\text{NH}_3)]^{2+}$ and Other Doubly-Charged Species

Cristina Trujillo, Otilia Mó, Manuel Yáñez, Jean-Yves Salpin, Jeanine  
Tortajada

► **To cite this version:**

Cristina Trujillo, Otilia Mó, Manuel Yáñez, Jean-Yves Salpin, Jeanine Tortajada. Gas-Phase Reactions Between Thiourea and  $\text{Ca}^{2+}$ : New Evidence for the Formation of  $[\text{Ca}(\text{NH}_3)]^{2+}$  and Other Doubly-Charged Species. *ChemPhysChem*, 2007, 8 (9), pp.1330-1337. 10.1002/cphc.200700113 . hal-00162242

**HAL Id: hal-00162242**

**<https://hal.science/hal-00162242>**

Submitted on 8 Oct 2018

**HAL** is a multi-disciplinary open access archive for the deposit and dissemination of scientific research documents, whether they are published or not. The documents may come from teaching and research institutions in France or abroad, or from public or private research centers.

L'archive ouverte pluridisciplinaire **HAL**, est destinée au dépôt et à la diffusion de documents scientifiques de niveau recherche, publiés ou non, émanant des établissements d'enseignement et de recherche français ou étrangers, des laboratoires publics ou privés.

**Gas-Phase Reactions Between Thiourea and  $\text{Ca}^{2+}$ . New evidences for the formation of  $[\text{Ca}(\text{NH}_3)]^{2+}$  and other doubly-charged species.**

Cristina Trujillo<sup>[a]</sup>, Otilia Mó<sup>[a]</sup>, Manuel Yáñez<sup>\*[a]</sup>, Jean-Yves Salpin<sup>\*[b]</sup> and Jeanine Tortajada<sup>[b]</sup>

<sup>[a]</sup> C. Trujillo, Prof. O. Mó, Prof. M. Yáñez

Departamento de Química, C-9. Universidad Autónoma de Madrid. Cantoblanco,  
28049-Madrid. Spain.

E-mail: [manuel.yanez@uam.es](mailto:manuel.yanez@uam.es)

<sup>[b]</sup> Dr. J.-Y. Salpin, Prof. J. Tortajada

Laboratoire Analyse et Modélisation pour la Biologie et l'Environnement, Université  
d'Evry Val d'Essonne, UMR CNRS 8587, Bâtiment Maupertuis, Boulevard François  
Mitterrand, 91025 EVRY CEDEX, France.

E-mail : [jean-yves.salpin@univ-evry.fr](mailto:jean-yves.salpin@univ-evry.fr)

**Abstract**

The gas-phase reactions between  $\text{Ca}^{2+}$  and thiourea were investigated by means of electrospray ionization/mass spectrometry experiments. The MS/MS spectra of  $[\text{Ca}(\text{thiourea})]^{2+}$  complexes show the appearance of new doubly charged species formed by the loss of  $\text{NH}_3$  and  $\text{HNCS}$ . Other intense peaks at  $m/z$  43, 56, 60, 73, 76 and 98 are also observed, and assigned to monocations produced in different coulomb explosion processes. The structures and bonding characteristics of the different stationary points of the  $[\text{Ca}(\text{thiourea})]^{2+}$  potential energy surface (PES) were theoretically studied by DFT calculations carried out at B3LYP/cc-pWCVTZ level. The analysis of the topology of this PES permits to propose different mechanisms for the loss of ammonia and  $\text{HNCS}$ , and to identify, the  $m/z$  43, 56, 60, 73, 76 and 98 peaks as  $\text{H}_2\text{NCNH}^+$ ,  $\text{CaNH}_2^+$ ,  $\text{H}_2\text{NCS}^+$ ,  $\text{CaSH}^+$ ,  $\text{thiourea}^+$  and  $\text{CaNCS}^+$  ions respectively. There are significant dissimilarities between the reactivity of urea and thiourea, which are related to the lower ionization energy of the latter, and to the fact that thioenols are intrinsically more stable than enols with respect to the corresponding keto forms.

## Introduction

Most of the experiments in gas-phase ion chemistry deal with singly charged species. However, in recent years, due to the development electro spray ionization ionization techniques, the number of studies on the interaction of divalent cations with neutral molecules in the gas-phase has grown significantly.<sup>[1-27]</sup> ~~attracted a lot of attention in the last few years because, among other things allows to easily produce doubly and multiply charged species in the gas phase.~~ Although monosolvated dications, such as  $\text{Cu}(\text{H}_2\text{O})^{2+}$ ,  $\text{Cu}(\text{NH}_3)^{2+}$  or  $\text{Pb}(\text{H}_2\text{O})^{2+}$ , have been detected in the gas phase,<sup>[6, 18, 25]</sup> and their lifetimes have been predicted to be extremely large when they are in the lower vibrational states,<sup>[28]</sup> most of the doubly charged species formed by association of a dication to a neutral system are stabilized through the interaction with several neutral or solvent molecules, so in some cases ~~seems that~~ there is a critical minimum size of the cluster for the multiply charged species to be detected by means of usual mass spectrometry techniques. As a matter of fact, when dealing with transition metal dications, the simple adducts  $\text{ML}^{2+}$  in which the metal associates with a single neutral molecule are very often not seen. This is the case for instance when dealing with  $\text{Cu}^{2+}$  and different bases. The oxidative character of the metal dication leads to the formation of the corresponding ligand radical cation  $\text{L}^+$ , which exhibits a much greater acidity than neutral system. Consistently, what it is detected in the gas phase are the  $[(\text{L}-\text{H})\text{M}]^+$  monocations produced by the deprotonation of this radical cation.

This is not the case however when dealing with alkaline-earth dications such as  $\text{Ca}^{2+}$ . The recombination energy of  $\text{Ca}^{2+}$  is much smaller than those of most of the transition metal dications (the second ionization energy being much smaller for Ca than for most of the transition metals) and therefore its oxidative character much smaller. The consequence is that  $\text{CaL}^{2+}$  dications may be detected in the gas phase. This is

indeed the case when the ligand is urea<sup>[29]</sup> or the first aminoacid, glycine.<sup>[30]</sup> This finding prompted us to initiate a systematic investigation of the reactions of  $\text{Ca}^{2+}$  with different bases of biochemical relevance, since the importance of divalent alkaline-earth metal dications ( $\text{Mg}^{2+}$ ,  $\text{Ca}^{2+}$ ,  $\text{Ba}^{2+}$ ) in many biological processes is well established.<sup>[31-35]</sup> Previous investigations have shown<sup>[29]</sup> that in the reactions between  $\text{Ca}^{2+}$  and urea, coulomb explosions played a crucial role, although also new doubly charged species, such as  $\text{H}_3\text{N}\text{Ca}^{2+}$  and  $\text{HNCO}\text{Ca}^{2+}$ , are produced in the reactions through unimolecular fragmentations, in which  $\text{HNCO}$  and neutral ammonia, respectively are lost. Interestingly, ~~the introduction~~ replacing an amino group by a hydroxyl group in the base ~~of an acidic function~~, which is the difference between urea and glycine, changes the reactivity pattern completely and only coulomb explosions are observed experimentally.<sup>[30]</sup> The aim of this paper is to investigate the reactivity pattern when the basic site of the system is a second-row atom by studying the reactions of  $\text{Ca}^{2+}$  with thiourea (TU). Besides, like urea, thiourea has an undoubted relevance from the biological point of view. As a matter of fact, thiourea itself influences the photosynthesis of some species<sup>[36]</sup>, protects against oxidative damage<sup>[37, 38]</sup> and some of its derivatives behave as radical scavengers<sup>[39]</sup> or inhibit virus replication.<sup>[40-42]</sup> Therefore, investigating whether the intrinsic reactivity of thiourea versus  $\text{Ca}^{2+}$  exhibits some peculiarities with respect to that shown by ~~its first row analogue~~ urea, is of great interest.

To get a complete picture of these reactivity patterns it is useful to combine the experimental information on the products distribution obtained by means of mass spectrometry techniques with a theoretical survey on the bonding and on the topology of the potential energy surface (PES) that connect the reactants with the products. For this purpose, in a previous paper<sup>[43]</sup> we have carried out an assessment of theoretical

procedures for the description of the interactions between neutral molecules and  $\text{Ca}^{2+}$ . In that paper we have concluded that the B3-LYP density functional method associated with a cc-pWCVTZ basis set expansion provides a good compromise between accuracy and computational cost in the calculation of structures and binding energies for  $\text{Ca}^{2+}$  complexes. Hence, this will be the theoretical scheme used in this work, in combination with electrospray mass spectrometry experiments.

## **METHODS**

### **Experimental Section**

Electrospray mass spectra were recorded on a QSTAR PULSAR i (Applied Biosystems/MDS Sciex) hybrid instrument (QqTOF) fitted with a nanospray source to minimize transfer-line contamination. Several  $\mu\text{L}$  of aqueous mixtures of calcium chloride ( $5 \cdot 10^{-4} \text{ mol L}^{-1}$ ) and thiourea ( $10^{-4} \text{ mol L}^{-1}$ ) were nanosprayed (20–50 nL/min) using borosilicate emitters (Proxeon). Samples were ionized using a 900 V nanospray needle voltage and the lowest possible nebulizing gas pressure (tens of millibars). The declustering potential (DP, also referred to as "cone voltage"), defined as the difference in potentials between the orifice plate and the skimmer (grounded), ranged from 0 to 40 V. The operating pressure of curtain gas ( $\text{N}_2$ ) was adjusted to 0.7 bar by means of an electronic board (pressure sensors), as a fraction of the  $\text{N}_2$  inlet pressure. To improve ion transmission and subsequently sensitivity during the experiments, collision gas (CAD,  $\text{N}_2$ ) was present at all times for collisional focusing in both the Q0 (ion guide preceding Q1 and located just after the skimmer) and Q2 (collision cell) sectors. For MS/MS spectra, ions of interest were mass selected using quadrupole Q1, and allowed to collide with nitrogen gas at various collision energies ranging from 8 eV to 16 eV in the laboratory frame (the collision energy is given by the difference between the potentials of Q0 and Q2), with the resulting fragments separated by the time-of-flight

(TOF) analyser after orthogonal injection. Low gas pressures (typically 1-2  $10^{-5}$  mbar) were used to limit multiple ion–molecule collisions. Thiourea and calcium salt were purchased from Aldrich and were used without further purification. All the measurements presented hereafter were carried out in 100% water purified with a Milli-Q water purification system.

### Computational Details

The geometries of neutral thiourea as well as those of the different stationary points of the  $[\text{Ca}(\text{TU})]^{2+}$  potential energy surface were optimized using the B3LYP<sup>[44, 45]</sup> density functional theory (DFT) approach, combined with cc-pWCVTZ<sup>[46, 47]</sup> basis sets, which includes core-correlation functions which were found to be important for the accurate treatment of alkaline earth metal oxides and hydroxides, as well as in the accurate calculation of  $\text{Ca}^{2+}$  binding energies.<sup>[43]</sup> The same theoretical scheme has been used to obtain their harmonic vibrational frequencies, used to classify the stationary points found as local minima or transition states, and to estimate the corresponding zero point energy (ZPE) corrections, which were scaled by the empirical factor 0.985.<sup>[48]</sup> To assess the connectivity between each transition state and the minima to which it evolves we have used the intrinsic reaction coordinate (IRC) procedure as implemented in the Gaussian-03 suite of programs.<sup>[49]</sup>

Binding energies were calculated, at the same levels of theory used for geometry optimizations, as the difference between the energy of the most stable  $[\text{Ca}(\text{TU})]^{2+}$  complex and the energy of urea, in its most stable conformation and the energy of  $\text{Ca}^{2+}$ , after including the ZPE corrections. (BSSE ??)

The bonding within the different local minima was analyzed by evaluating the molecular graph of the most stable  $[\text{Ca}(\text{TU})]^{2+}$  and by calculating the corresponding energy density contour map, within the framework of the atoms in molecules (AIM)

theory.<sup>[50]</sup> The relative changes in the charge density at the different bond critical points offer information in the bonding perturbation undergone by the base upon  $\text{Ca}^{2+}$  association. On the other hand, the sign of the energy density within each bonding region clearly indicates the covalent or ionic nature of the interaction.

## Results and discussion

### *Mass Spectrometry*

For thiourea the experimental conditions allowing the doubly-charged complex to be observed with a significant abundance turned out to be sensibly different from those adopted for the  $\text{Ca}^{2+}$ /urea system. First, a very low cone voltage (DP= 0 V) had to be used. Regardless of the DP value, the overwhelming species is the calcium hydroxide  $\text{CaOH}^+$  species ( $m/z$  57). An ion at  $m/z$  75, attributed to  $\text{CaOH}^+ \cdot \text{H}_2\text{O}$  is also observed in significant abundance. Interaction between thiourea and calcium ion gives rise to both singly- and doubly-charged complexes. Only one doubly-charged adduct, namely the  $[\text{Ca}(\text{thiourea})]^{2+}$  ion ( $m/z$  58), is detected with a relative abundance of c.a. 10 %. However, even with the DP parameter set to 0 V, its observation is not straightforward and preliminary optimization of the metal:thiourea ratio was necessary. This was achieved by varying the concentration of the metal while keeping that of thiourea constant ( $10^{-4}$  mol/L), the DP value being fixed at 0 volts. In these conditions, the highest intensity of the  $m/z$  58 ion has been obtained with a 5:1 ratio. Singly charged complexes of general formula  $[\text{Ca}(\text{TU})_n\text{-H}]^+$  ( $n=1-3$ ) are detected at  $m/z$  115, 191 and 267. An additional intense ion corresponds to protonated thiourea ( $m/z$  77) and in-source fragmentations of the doubly charged  $[\text{Ca}(\text{thiourea})]^{2+}$  species.

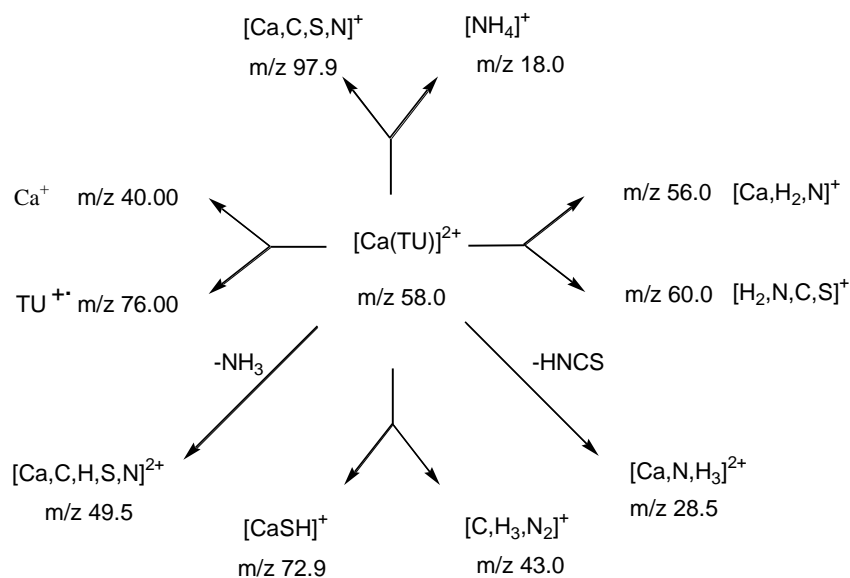
Increasing the DP results in significant changes in the electrospray spectrum. First, the  $[\text{Ca}(\text{thiourea})]^{2+}$  complex quickly disappears. While  $\text{CaOH}^+$  remains the base peak,



increasing the cone voltage induces various in-source fragmentation processes. As a matter of fact, the  $[\text{Ca}(\text{TU})_2\text{-H}]^+$  ( $m/z$  191) and  $[\text{Ca}(\text{TU})_2\text{-H}]^+$  ( $m/z$  267) dissociate according to elimination of intact TU units, as checked by complementary MS/MS experiments. This results in the small increase of the intensity of the  $[\text{Ca}(\text{TU})\text{-H}]^+$  ion ( $m/z$  115). In turn, this latter species eliminates a molecule of ammonia to give rise to a peak at  $m/z$  98. A similar process occurs from protonated thiourea, resulting in an intense  $m/z$  60 ion at high DP. Note that both  $m/z$  60 and 98 ions could also correspond to dissociation of the doubly charged  $[\text{Ca}(\text{thiourea})]^{2+}$  ion, as detailed below.

We will now focus on the  $[\text{Ca}(\text{TU})]^{2+}$  MS/MS spectra. These spectra have been recorded at DP = 0 V. A typical CID spectrum for the  $[\text{Ca}(\text{TU})]^{2+}$  species is given in Figure 1. Note that on our instrument and for this particular system, the smallest collision energy in the laboratory frame ( $E_{\text{lab}}$ ) for which sufficient amount of fragment ions can reach the detector, was 8 eV, and at this value dissociation of the parent ions occurs quite extensively, its relative abundance being already about 61 %.  $E_{\text{lab}}$  was scanned from 8 to 14 eV. This corresponds to center-of-mass collision energies ( $E_{\text{CM}}$ ) ranging from 3.11 to 5.44 eV,  $\text{N}_2$  being used as target gas (see the corresponding breakdown graph given in Figure 2S of the supporting information). The  $[\text{Ca}(\text{TU})]^{2+}$  complex dissociates according to either neutral losses generating new dications, or through several Coulomb explosion processes. Like for urea, elimination of ammonia is observed, which gives rise to an ion at  $m/z$  49.5. Two additional neutral molecules are eliminated. The first one is  $[\text{H,N,C,S}]$ , giving rise to an ion at  $m/z$  28.5. The second one corresponds to the loss of the intact thiourea, but the bare dication ( $m/z$  20) is only observed for  $E_{\text{lab}}$  values greater than 11 eV (4.28 eV in the center of mass frame). All the other fragments observed in the MS/MS spectrum (namely  $m/z$  18, 40, 43, 56, 60, 73, 76 and 98) arise from four distinct Coulomb explosion processes i.e., fragmentation

of the  $[\text{Ca}(\text{TU})]^{2+}$  dication into two monocations. All the fragmentations are summarized in scheme 1, together with the chemical formula postulated for each fragment ion.



<Scheme 1>

Unlike with urea, elimination of neutral molecules never prevails. For comparison, only two Coulomb explosions were observed with urea, which presently correspond to the 18/98 and 56/60 pairs. The most striking feature is the occurrence of a dissociative electron transfer between the ligand and the metallic center, giving rise to  $\text{Ca}^+$  ( $m/z$  40) and radical cation of thiourea ( $m/z$  76.0). The fourth coulomb explosion, characteristic of this system leads to the calcium thiohydroxyl cation  $[\text{CaSH}]^+$  at  $m/z$  72.9 and concomitant formation of the organic ion  $[\text{C,H}_3,\text{N}_2]^+$  ( $m/z$  43).

Partner peaks arising from the Coulomb explosion processes should have in principle the same intensity. However, as it was already found for the urea- $\text{Ca}^{2+}$  system, the lightest ions ( $m/z$  18, 40, 43 and 58) are systematically less intense than the heaviest ones ( $m/z$  98, 76, 73, 60, respectively). This effect is particularly pronounced for the three first pairs. Similar findings have been also previously reported for alcohols<sup>[51]</sup> and acetonitrile.<sup>[52]</sup> This phenomenon has been interpreted in terms of different radial ion

energies, with the lighter ions generated by the Coulomb explosion gaining most of the radial energy and therefore having a much higher velocity than the relatively high mass ions. This can result in an unstable ion trajectory within the instrument and explains why lighter ions are detected in the MS/MS spectrum with smaller abundance. This effect may be even more pronounced in our QqTOF instrument, the lightest ions being less effectively transferred into the TOF region during the orthogonal injection step, because of their higher velocity.

Finally, note that the MS/MS spectra of all the singly-charged  $[\text{Ca}(\text{TU})_n\text{-H}]^+$  complexes have also been recorded. Their MS/MS spectra appear to be much more simple. The  $[\text{Ca}(\text{TU}-\text{H})]^+$  ion MS/MS spectrum exhibits only fragment ions obtained by elimination of ammonia. The higher homologues are characterized by loss of up to  $n-1$  thiourea units.

### *Structure and bonding*

The most stable  $[\text{Ca}(\text{TU})]^{2+}$  adduct, **1**, corresponds to a structure in which the metal dication is attached to the thiocarbonyl sulfur atom. It is worth noting that for both urea and thiourea the most basic site to protonation is the carbonyl<sup>[53]</sup> and the thiocarbonyl group,<sup>[54]</sup> respectively. At variance with urea, ~~this structure~~ adduct **1** is only 2.9 kJ mol<sup>-1</sup> lower in energy than form **2** in which the metal dication bridges between the thiocarbonyl sulfur atom and one of the amino nitrogens (See Figure 2). Another important difference between both bases is that, while in the  $[\text{Ca-urea}]^{2+}$  most stable complex, the metal dication lies in the same plane of the molecule, in  $[\text{Ca}(\text{TU})]^{2+}$  complex **1**,  $\text{Ca}^{2+}$  locates in the plane that bisects the NCN angle of the base and forms an angle of 120° with the C=S bond. The preference of bent structures for thioderivatives versus the preference of linear arrangements for the corresponding

oxygen containing counterparts have been already reported for other metal monocations.<sup>[55]</sup> This is essentially a consequence of the different size of the basic center lone pairs. In the carbonyl group both lone pairs are small and the cation locates between both to enhance polarization effects. In thiocarbonyl groups the sulfur lone pairs are much larger and the specific interaction with a single lone pair is clearly favored.

Similarly to what was found for urea<sup>[29]</sup>, a third local minimum, **3**, 128 kJ mol<sup>-1</sup> less stable than **1**, corresponds to a complex in which Ca<sup>2+</sup> bridges between both amino groups (See Figure 2).

Ca<sup>2+</sup>-thiourea interactions are essentially electrostatic as revealed by the positive value of the energy density in the region between the two interacting subunits. It is worth noting however that the energy density contour maps for the two most stable adducts **1** and **2**, show a strong polarization of the valence shell density of sulfur toward the metal dication, and also of the nitrogen lone pair in the latter (See Figure 1S of the supporting information). This polarization affects directly the C=S bond, but it is transmitted also to the other bonds of the base. A comparison of the molecular graphs of neutral thiourea and the two most stable Ca<sup>2+</sup>/thiourea complexes shows in both adducts, **1** and **2**, a decrease in the electron density at the C=S bond critical point, which lengthen by 0.095 and 0.019 Å, respectively. Concomitantly, in structure **1** the aforementioned polarization leads to an increase of the conjugation of the nitrogen lone-pair of the amino groups, which become strictly planar. Accordingly, the electron density at the C-N bcps increases and the C-N bonds shorten by 0.041 Å. In complex **2**, the C-N bond directly interacting with the metal becomes significantly (0.054 Å) longer and the electron density at the bcp significantly smaller, whereas the other C-N bond becomes significantly reinforced, with a bond length 0.053 Å shorter and a greater

electron density at the bcp. These changes are also reflected in the stretching frequencies. The C=S stretching frequencies in complexes **1** and **2** appear 83 and 41  $\text{cm}^{-1}$  red-shifted, respectively with respect to the neutral compound. As far as the C-N stretching frequencies are concerned, they appear coupled as symmetric and antisymmetric combinations both in the neutral and in complex **1**, and are blue-shifted by 10 and 140  $\text{cm}^{-1}$ , respectively. In complex **2** however, they are decoupled, that of the amino group interacting with the metal dication being significantly red shifted, while that of the free amino group is blue-shifted.

### *Reactions Mechanisms for the unimolecular reactions of $[\text{Ca}(\text{U})]^{2+}$ complexes*

As it could be easily anticipated the potential energy surface (PES) corresponding to the unimolecular reactions of the  $[\text{Ca}(\text{TU})]^{2+}$  system is very complicated. Hence, for the sake of clarity we will discuss first that part of the PES with origin in the global minimum **1** (See Figure 3). The first conspicuous fact of figure 3 is that the most favorable process from the global minimum **1** is its isomerization, through an internal rotation of the SCa group, to yield the second local minimum **2**. Hence, it is reasonable to admit that both will have an almost equal significance as far as the unimolecular reactivity of  $[\text{Ca}(\text{TU})]^{2+}$  species is concerned. Hence, in the forthcoming sections we will also analyze in detail the PES with origin in this second local minimum.

In both Figures 3 and 4 we have distinguished the mechanisms associated with the loss of a neutral fragment (black solid lines) from those which correspond to the formation of two monocations through Coulomb explosions (red dashed lines).

*Reaction mechanisms with origin in the global minimum 1*

Besides its aforementioned isomerization yielding complex **2**, three other reaction pathways have their origin in minimum **1**: i) a 1,3-H shift from one amino group towards the sulfur atom yielding the structure **8** through the transition state **TS1\_8**, ii) a symmetric displacement of Ca towards the plane containing the two amino nitrogen leading to the adduct **3**, iii) its coulomb explosion through the transition state **TS1d** giving rise to  $\text{Ca}^+ + \text{thiourea}^+$ .

Adduct **3** may also undergo a coulomb explosion, through an even lower activation barrier (**TS3d**), to yield  $\text{H}_2\text{NCa}^+ + \text{H}_2\text{NCS}^+$ , which correspond to the peaks detected at  $m/z$  56 and 60, respectively in the CID spectra.  $\text{H}_2\text{NCa}^+$  can be also produced by the coulomb explosion of complex **8** (through **TS8\_d**), the difference being the connectivity of the accompanying ion. Hence, according to our calculations, the  $m/z$  60 peak might correspond to two different ions, namely  $\text{H}_2\text{NCS}^+$  and  $\text{HNCSH}^+$ , even though the former should be clearly dominant, because the corresponding process is more exothermic and the activation barrier associated with the coulomb explosion of species **3** is lower than that of species **8**.

Adduct **3**, may also evolve, through the **TS3\_8b** transition state, to yield a quite stable local minimum **8b**. It is worth noting that this new minimum can be viewed as a conformer of species **8**. As a matter of fact, in **8** Ca interacts with both the sulfur atom and the amino group, whereas in **8b**, it bridges the sulfur atom and the imino group, accounting for its enhanced stability. More importantly, species **8b** yields in a quite exothermic coulomb explosion, through an activation barrier of  $166 \text{ kJ mol}^{-1}$ , the  $\text{CaSH}^+ + \text{H}_2\text{NCNH}^+$  product ions observed experimentally. Actually, the peak corresponding to  $\text{CaSH}^+$  ( $m/z$  72.9) is among the more intense in the ESI spectra.

Minimum **8b**, may also finally yield, through the intermediates **9** and **10**, a very stable complex **11** in which the metal is connected to a SH<sub>2</sub> and a H<sub>2</sub>NCN subunits. This species may dissociate either into SH<sub>2</sub> + H<sub>2</sub>NCNCa<sup>2+</sup> or into H<sub>2</sub>SCa<sup>+</sup> + H<sub>2</sub>NCN<sup>+</sup> (the dissociation into H<sub>2</sub>SCa<sup>2+</sup> + H<sub>2</sub>NCN, being 37.7 kJ mol<sup>-1</sup> higher in energy). Both processes are quite endothermic with respect to **11**. Furthermore, the activation barrier to go from **9** to **10** is the highest of the whole PES, and therefore neither the loss of SH<sub>2</sub> nor the formation of H<sub>2</sub>SCa<sup>+</sup> ions should be observed, in agreement with the experimental findings.

#### *Reaction mechanisms with origin in adduct 2*

The local minimum **2** can be formed either by a direct attachment of Ca<sup>2+</sup> to thiourea in a rather exothermic process or, as mentioned above, by isomerization from the global minimum through a very low activation barrier. Once complex **2** is formed, if one excludes the **2** → **1** interconversion, the most favorable process is its isomerization through an internal rotation of the NH<sub>2</sub>-Ca moiety (see Figure 4), yielding the adduct **3** whose unimolecular reactivity was already discussed in the previous section. A little higher is the activation barrier associated with the coulomb explosion of **2** giving rise to the H<sub>2</sub>NCa<sup>+</sup> + H<sub>2</sub>NCS<sup>+</sup> singly-charged species. This mechanism is consistent with the significant activation of one of the C-N bonds in complex **2** discussed above. Hence, we can conclude that complex **2** would yield H<sub>2</sub>NCa<sup>+</sup> + H<sub>2</sub>NCS<sup>+</sup> either in a direct coulomb explosion, through the **TS2d** transition state or through a previous **2** → **3** isomerization (see Figure 3). Like for structure **1**, the less favorable process from **2** is a 1,3H shift between the two amino groups, leading to complex **4**.

A bunch of processes arise from complex **4** (see Figure 4). The first two correspond to the cleavage of the C-NH<sub>3</sub> bond, leading to the formation of the very

stable complexes **5** and **7**, in which the NH<sub>3</sub> subunit initially bound to the C atom in structure **4** is now linked to Ca. These two complexes differ only by the atom of the HNCS moiety that is actually bonded to Ca (nitrogen in complex **7** or sulfur in complex **5**). These two complexes may lose either NH<sub>3</sub> or HNCS, leading to the two doubly-charged fragments [Ca,H,N,C,S]<sup>2+</sup> and [Ca(NH<sub>3</sub>)]<sup>2+</sup>, respectively, that are indeed observed experimentally in the MS/MS spectrum, at *m/z* 49.5 and 28.5, respectively. Since there was some controversy in the literature about the existence of metal dications solvated by a single molecule of water or ammonia<sup>[5, 6, 28, 56, 57]</sup>, it is worth noting that in these processes the doubly charged species [Ca(NH<sub>3</sub>)]<sup>2+</sup> is indeed generated, which provide further evidence for the existence of a Ca<sup>2+</sup> dication solvated by only one molecule of ammonia in the gas phase.<sup>[58]</sup> This species was already detected in the study of the Ca<sup>2+</sup>/urea system.<sup>[29]</sup> It is also worth noting that these fragmentations in which a doubly charged species is formed can be viewed as a Cooks kinetic experiment.<sup>[59, 60]</sup> Hence, the dissociation of complex **5** or **7** into [Ca(NH<sub>3</sub>)]<sup>2+</sup> and [CaSCNH]<sup>2+</sup> or [Ca(H)NCS]<sup>2+</sup>, respectively, clearly show that the Ca<sup>2+</sup> affinity of ammonia is greater than that of HNCS, regardless of the attachment site of the metal to the HNCS moiety. Our data also show that HNCS behaves preferentially as a nitrogen base towards Ca<sup>2+</sup>. Figure 4 also shows that the most favorable process occurring from **4**, is the formation of the intermediate **6**, in which a NH<sub>4</sub><sup>+</sup> ion is hydrogen bonded to a NCSCa<sup>+</sup> fragment, as reflected in its molecular graph (See Figure 1S of the supporting information) that shows the existence of a bond critical point between one of the hydrogen atoms of the NH<sub>4</sub><sup>+</sup> moiety and the N atom of the NCSCa<sup>+</sup> subunit, while the net charge of both subunits is practically +1 (+0.98 and +1.02, respectively). This weakly bound species undergoes two different coulomb explosions, which differ in the connectivity of the ion that accompanies NH<sub>4</sub><sup>+</sup>. In the most exothermic one Ca is attached to the nitrogen atom



of the NCS entity, which is its most basic site. In the less exothermic, Ca is bound to the sulfur atom. These two coulomb explosions account for the formation of the ions at  $m/z$  18 and 97.9. The latter one should therefore correspond to a mixture of two structures, even if one may reasonably assume that the population of  $[\text{CaNCS}]^+$  should be dominant.

Finally, the last process involving the adduct **4** gives rise to the intermediate **8b**, which, as previously described, may evolve towards the formation of  $\text{HSCa}^+$  ( $m/z$  72.9) and  $\text{H}_2\text{NCNH}^+$  ( $m/z$  43).

### *Analogies and dissimilarities between urea- $\text{Ca}^{2+}$ and thiourea- $\text{Ca}^{2+}$ reactions*

The overall topology of the thiourea- $\text{Ca}^{2+}$  PES is in agreement with the experimental observations. MS/MS spectra were recorded at a collision energy ranging from 8 to 14 eV in the laboratory frame. This corresponds to center of mass collision energies starting from 3.11 eV. Interestingly, the fact that all the product ions are already detected at the lowest collision energy is consistent with the energetics associated of the various reactions pathways considered in Figure 3 and 4. It is also worth noting that bare  $\text{Ca}^{2+}$  ions at  $m/z$  20 start to be detected for center of mass collision energies higher than 4 eV, which merely corresponds to the calculated binding energy for TU (404  $\text{kJ mol}^{-1}$ ). The intensity of  $\text{Ca}^{2+}$  remains very small as the collision energy is further increased, as can be observed onto the breakdown graph given in the supporting information (Figure 2S).

The highest barriers associated with the various coulomb explosions are typically in the 201-230  $\text{kJ mol}^{-1}$  range. The lowest energy paths are those yielding to  $\text{NH}_2\text{Ca}^+$  and  $\text{CaSH}^+$ , then followed by those leading to  $\text{Ca}^+$  and  $\text{NH}_4^+$ , which are also observed for the urea/ $\text{Ca}^{2+}$  system. In addition, both the loss of  $\text{NH}_3$  and  $\text{HNCS}$  are very minor

processes. This is consistent with the fact that they originate from the suitable precursors **5** and **7**, and therefore require much more energy than the proton transfer leading to the  $\text{NH}_4^+$  moiety in complex **6**. This is at variance with respect to the  $[\text{Ca}(\text{urea})]^{2+}$  unimolecular reactivity, where the energy requirements to form  $\text{NH}_4^+$  ion or to lose  $\text{NH}_3$ , were rather similar, explaining that the loss of  $\text{NH}_3$  was much more important in the urea case.

Another interesting difference between urea- and thiourea- $\text{Ca}^{2+}$  reactions is that the dissociative charge transfer leading to  $\text{Ca}^+$  and the ionized ligand, is a favorable process for the  $\text{Ca}^{2+}$ /thiourea system, as attested by the intense peak at  $m/z$  76 ( $\text{TU}^+$ ), while such a charge transfer is not observed with urea. This dissimilarity between urea and thiourea undoubtedly reflects the large difference in their ionization energies (10.27 to 8.50 eV, respectively),<sup>[61]</sup> the charge transfer being thermodynamically favorable only in the case of thiourea.

The third important difference between urea- and thiourea- $\text{Ca}^{2+}$  reactions is that while the coulomb explosion yielding  $\text{CaSH}^+ + \text{H}_2\text{NCNH}^+$  is very favorable for the latter, a similar process (formation of  $\text{CaOH}^+ + \text{H}_2\text{NCNH}^+$ ) is not observed for urea. This may be explained by the substantial difference between the barriers associated with the hydrogen shifts from the amino groups towards the carbonyl (thiocarbonyl) group. In thiourea these hydrogen shifts involve activation barriers that are rather similar to those of the different coulomb explosions and to those of the hydrogen shifts between the amino groups. Conversely, in urea, these barriers are much higher in energy, and therefore the associated processes very unfavorable. This actually reflects the fact that a carbonyl bond is stronger than a thiocarbonyl one, while a S-H bond is weaker than an O-H bond, the first effect being dominant as it has been shown by comparing the atomization energies of thioformaldehyde + methanol with the atomization energies of

formaldehyde + thiomethanol<sup>[62, 63]</sup>. Consistently, the thiocarbonyl-thioenol enthalpy difference is much smaller than the carbonyl-enol enthalpy difference<sup>[64]</sup>, so while the formation of a S-H bond in thiourea reactions is energetically accessible, the formation of an O-H bond in urea is not.

## Conclusions

The gas-phase unimolecular reactivity  $\text{Ca}^{2+}$  ions towards urea and thiourea share several common features as well as significant dissimilarities. In both processes, the formation of new doubly charged species, namely  $[\text{Ca,H,N,C,S}]^{2+}$  (or  $[\text{Ca,H,N,C,O}]^{2+}$ ) and  $[\text{Ca}(\text{NH}_3)]^{2+}$  by the loss of  $\text{NH}_3$  and  $\text{HNCS}$  (or  $\text{HNCO}$ ), respectively, are observed. However, while these processes are dominant with urea, they only occur to a minor extent with thiourea. The  $\text{H}_2\text{NCa}^+$  and  $\text{NH}_4^+$  monocations are also observed in both systems, as a result of typical coulomb explosion processes. In the particular case of the  $\text{Ca}^{2+}$ /thiourea system, two new coulomb explosions are observed, yielding  $\text{Ca}^+ + \text{thiourea}^+$  and  $\text{HSCa}^+ + \text{H}_2\text{NCNH}^+$ , respectively. The first is attributed to the ionization energy of thiourea, which is significantly lower than that of urea. The second is a consequence of the fact that, as shown previously in the literature<sup>[62]</sup>, thioenols are intrinsically more stable than enols with respect to the corresponding keto forms. Consequently, the H-shift processes from the amino group toward the carbonyl (thiocarbonyl) group which in urea are very unfavorable become energetically accessible for thiourea and are characterized by activation energies similar to those involved in H-shifts between the amino groups.

**Acknowledgements.** This work has been partially supported by the DGI Project No. BQU2003-00894, by the COST Action D26/0014/03 and by the Project

MADRISOLAR, Ref.: S-0505/PPQ/0225 of the Comunidad Autónoma de Madrid. A generous allocation of computing time at the CCC of the UAM is also acknowledged.

## References

## Figure Captions

**Figure 1.** Low-energy CID spectrum of the  $[\text{Ca}(\text{thiourea})]^{2+}$  complex recorded at  $\text{DP} = 0$  V and  $E_{\text{lab}} = 11$  eV. See text for details.

**Figure 2.** Optimized geometries for the most stable thiourea- $\text{Ca}^{2+}$  adducts. Bond lengths are in Å and bond angles in degrees. For the sake of comparison we have included also the optimized geometry of the isolated thiourea.

**Figure 1S.** (a) Contour map of the energy density and molecular graphs for two most stable  $[\text{Ca}(\text{thiourea})]^{2+}$  complexes. In the plot of the energy density blue dashed lines correspond to negative values of  $H(\mathbf{r})$  and solid red lines to positive values. In the molecular graphs both the bcps (red dots) and the ring critical points (yellow dots) are shown. Electron densities are in a.u.

**Figure 2S.** Breakdown diagram associated with the fragmentation of the  $[\text{Ca}(\text{TU})]^{2+}$  complex upon collision, for collision energies ranging from 3.11 to 5.44 eV (in the center of mass frame),

**Figure 3.** Energy profile of thiourea- $\text{Ca}^{2+}$  reactions with origin in the most stable adduct **1**. Dashed red lines correspond to mechanisms associated with Coulomb explosions.

**Figure 4.** Energy profile of thiourea- $\text{Ca}^{2+}$  reactions with origin in the second most stable adduct **2**. Conventions as in Figure 3.

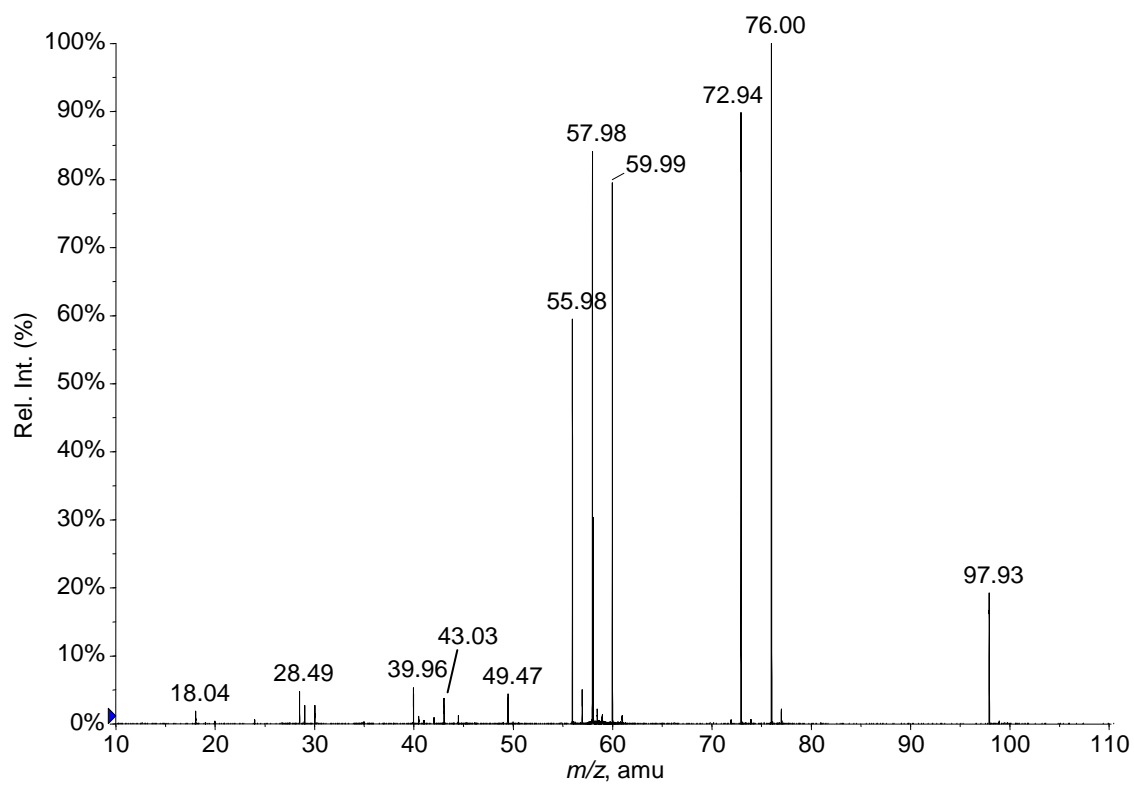


Figure 1

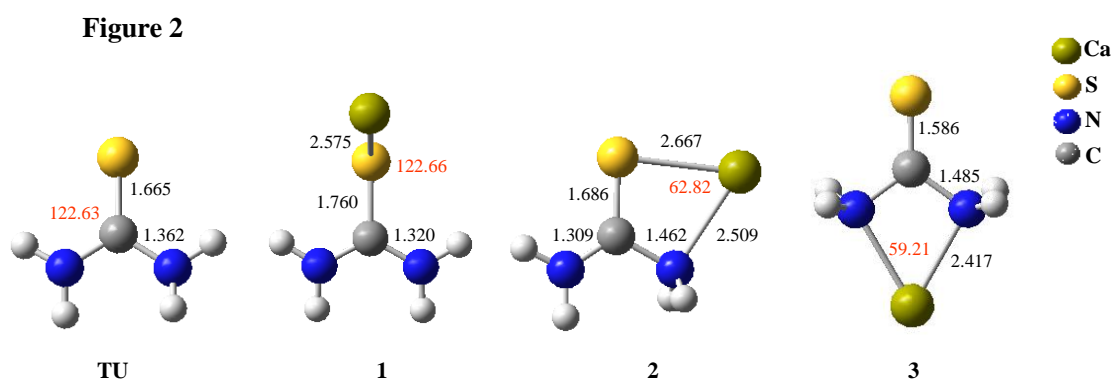
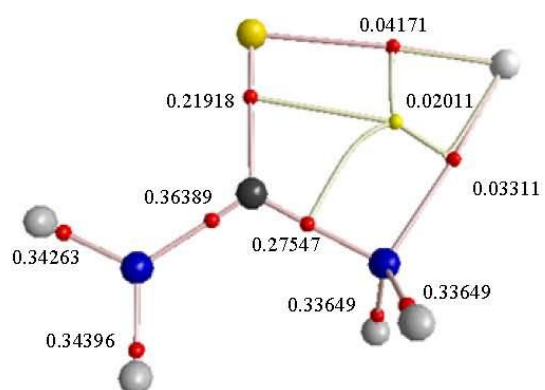
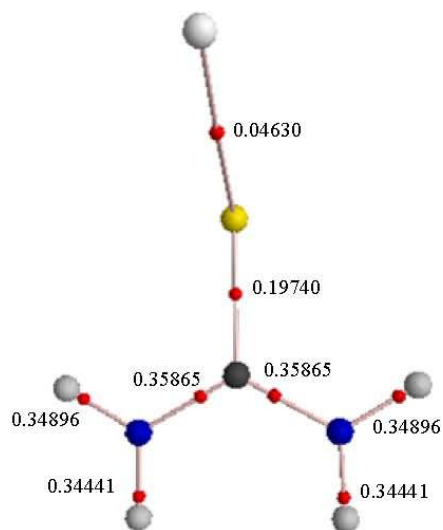
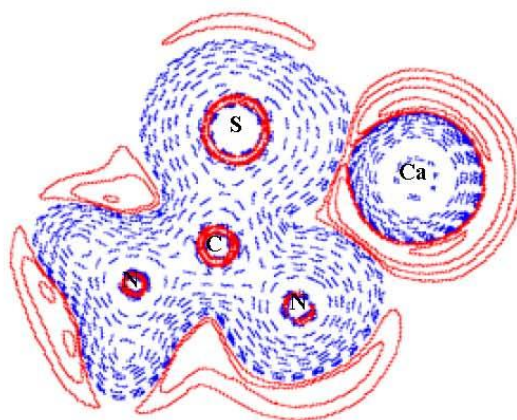
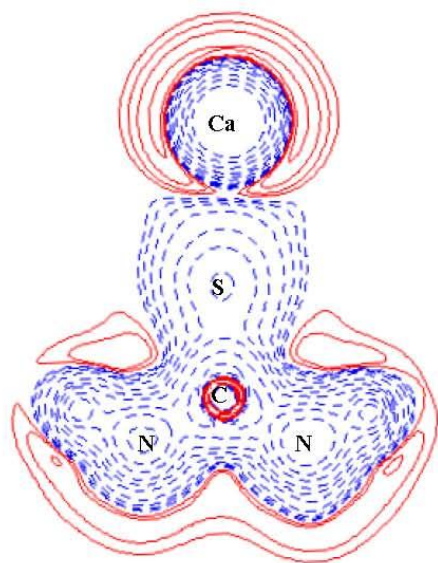
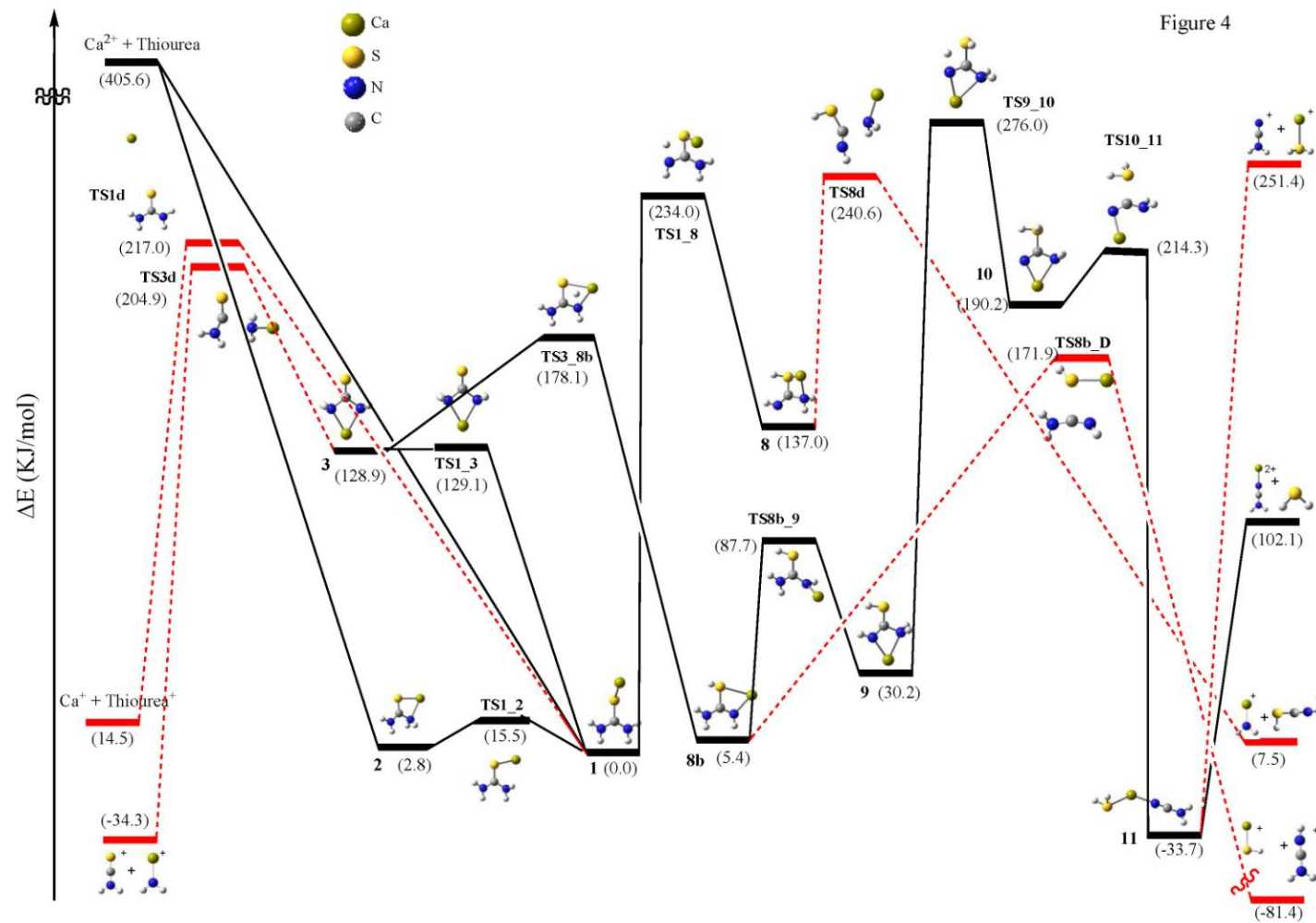
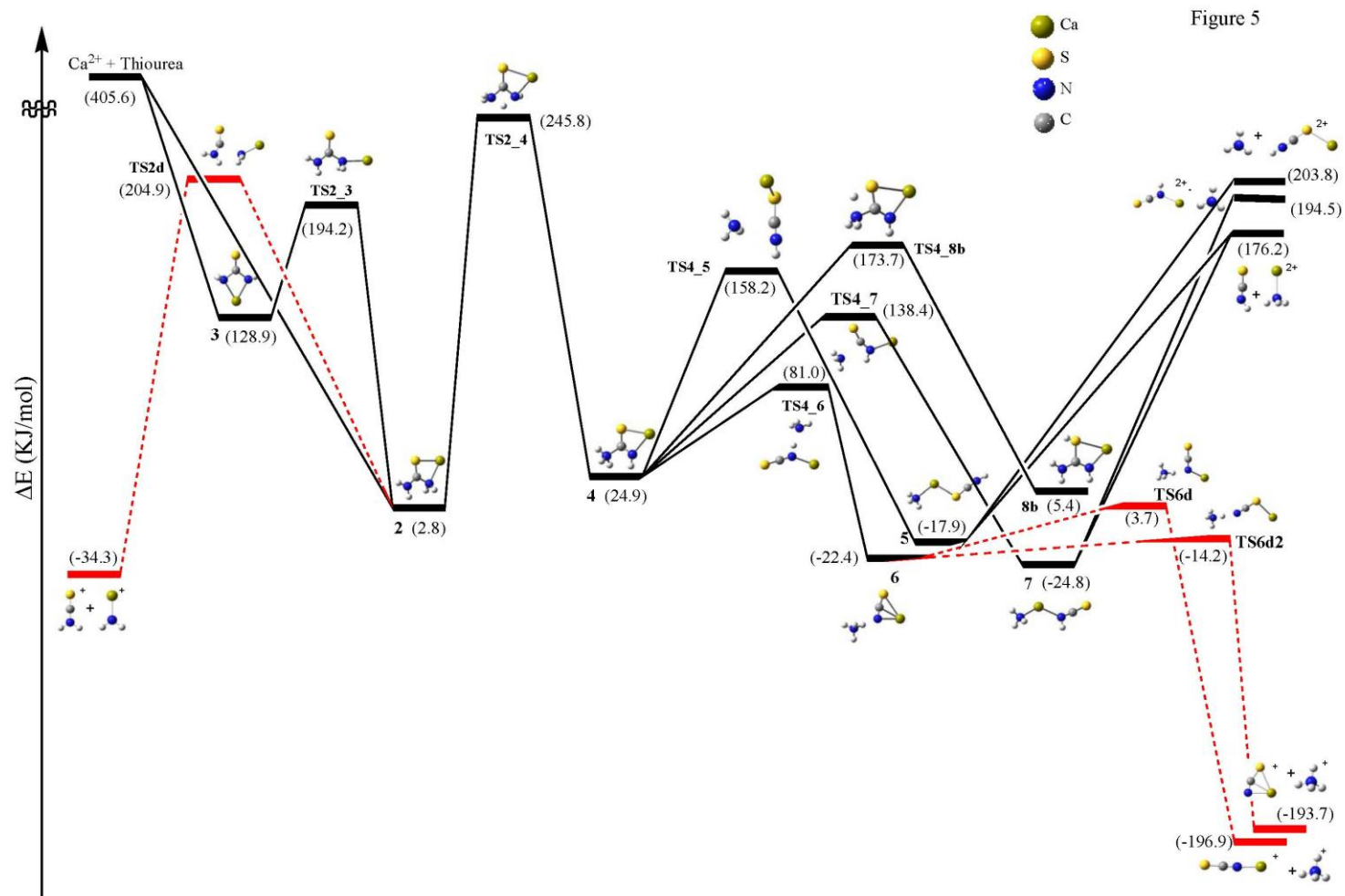


Figure 3

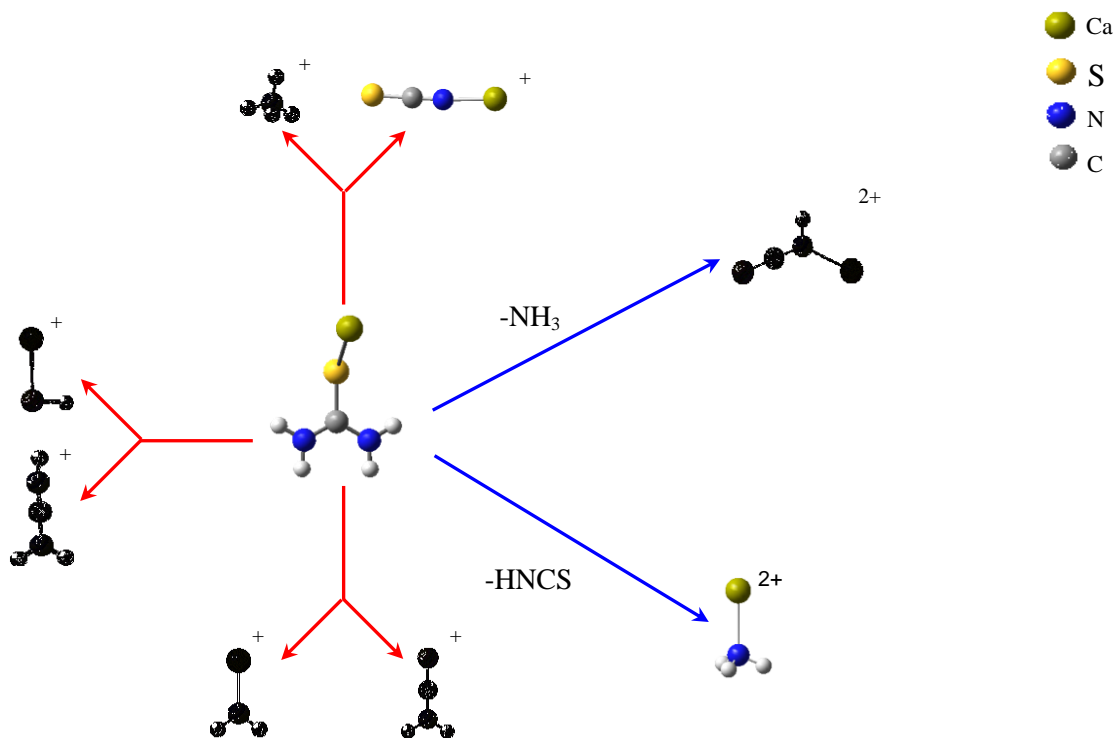








## Table of Contents



### Text for the Table of contents

The unimolecular reactivity of  $[\text{Ca}(\text{thiourea})]^{2+}$  dications leads, by the loss of  $\text{NH}_3$  and  $\text{HNCS}$ , to the formation of new doubly charged species, namely  $[\text{Ca},\text{H},\text{N},\text{C},\text{S}]^{2+}$  and  $[\text{Ca}(\text{NH}_3)]^{2+}$  (blue arrows) which provides further evidence for the existence of a  $\text{Ca}^{2+}$  dication solvated by only one molecule of ammonia (or  $\text{HNCS}$ ) in the gas phase. These processes compete with several coulomb explosions (red arrows).

**Keywords:** thiourea;  $\text{Ca}^{2+}$  reactions; electrospray mass spectrometry; density functional calculations; gas-phase doubly charged species

[1] M. Beyer, E. R. Williams and V. E. Bondybey, *J. Am. Chem. Soc.* **1999**, *121*, 1565-1573.

- [2] S. Petrie and L. Radom, *Int. J. Mass Spectrom.* **1999**, *192*, 173-183.
- [3] D. Schröder and H. Schwarz, *J. Phys. Chem. A* **1999**, *103*, 7385-7394.
- [4] B. Song, J. Zhao, R. Griesser, C. Meiser, H. Sigel and B. Lippert, *Chem. Eur. J.* **1999**, *5*, 2374-2387.
- [5] A. M. El-Nahas, N. Tajima and K. Hirao, *Chem. Phys. Lett.* **2000**, *318*, 333-339.
- [6] D. Schröder, H. Schwarz, J. Wu and C. Wesdemiotis, *Chem. Phys. Lett.* **2001**, *343*, 258-264.
- [7] A. M. El-Nahas, *Chem. Phys. Lett.* **2002**, *365*, 251-259.
- [8] A. A. Shvartsburg and J. G. Wilkes, *J. Phys. Chem. A* **2002**, *106*, 4543-4551.
- [9] H. Cox, G. Akibo-Betts, R. R. Wright, N. R. Walker, S. Curtis, B. Duncombe and A. J. Stace, *J. Am. Chem. Soc.* **2003**, *125*, 233-242.
- [10] N. Russo, M. Toscano and A. Grand, *J. Phys. Chem. A* **2003**, *107*, 11533-11538.
- [11] A. A. Shvartsburg and J. G. Wilkes, *Int. J. Mass Spectrom.* **2003**, *225*, 155-166.
- [12] N. R. Walker, G. A. Grieves, J. B. Jaeger, R. S. Walters and M. A. Duncan, *Int. J. Mass Spectrom.* **2003**, *228*, 285-295.
- [13] D. Asthagiri, L. R. Pratt, M. E. Paulaitis and S. B. Rempe, *J. Am. Chem. Soc.* **2004**, *126*, 1285-1289.
- [14] H. Cox and A. J. Stace, *J. Am. Chem. Soc.* **2004**, *126*, 3939-3947.
- [15] R. B. Metz, *Int. J. Mass Spectrom.* **2004**, *235*, 131-143.
- [16] J. Poater, M. Sola, A. Rimola, L. Rodriguez-Santiago and M. Sodupe, *J. Phys. Chem. A* **2004**, *108*, 6072-6078.
- [17] D. Schröder, *Angew. Chem. Int. Ed.* **2004**, *43*, 1329-1331.
- [18] T. J. Shi, G. Orlova, J. Z. Guo, D. K. Bohme, A. C. Hopkinson and K. W. M. Siu, *J. Am. Chem. Soc.* **2004**, *126*, 7975-7980.
- [19] N. G. Tsierkezos, D. Schroder and H. Schwarz, *Int. J. Mass Spectrom.* **2004**, *235*, 33-42.
- [20] R. L. Wong, K. Paech and E. R. Williams, *Int. J. Mass Spectrom.* **2004**, *232*, 59-66.
- [21] C. Y. Xiao, K. Walker, F. Hagelberg and A. M. El-Nahas, *Int. J. Mass Spectrom.* **2004**, *233*, 87-98.
- [22] M. Belcastro, T. Marino, N. Russo and M. Toscano, *J. Mass Spectrom.* **2005**, *40*, 300-306.

- [23] B. J. Duncombe, L. Puskar, B. H. Wu and A. J. Stace, *Can. J. Chem.* **2005**, *83*, 1994-2004.
- [24] S. Guillaumont, J. Tortajada, J. Y. Salpin and A. M. Lamsabhi, *Int. J. Mass Spectrom.* **2005**, *243*, 279-293.
- [25] T. J. Shi, J. F. Zhao, A. C. Hopkinson and K. W. M. Siu, *J. Phys. Chem. B* **2005**, *109*, 10590-10593.
- [26] E. Rincon, P. Jaque and A. Toro-Labbe, *J. Phys. Chem. A* **2006**, *110*, 9478-9485.
- [27] I. Tunell and C. Lim, *Inorg. Chem.* **2006**, *45*, 4811-4819.
- [28] A. Palacios, I. Corral, O. Mo, F. Martin and M. Yanez, *J. Chem. Phys.* **2005**, *123*.
- [29] I. Corral, O. M<sup>o</sup>, M. Y<sup>a</sup>ñez, J.-Y. Salpin, J. Tortajada and L. Radom, *J. Phys. Chem. A* **2004**, *108*, 10080-10088.
- [30] I. Corral, O. Mo, M. Yanez, J. Y. Salpin, J. Tortajada, D. Moran and L. Radom, *Chem. Eur. J* **2006**, *12*, 6787-6796.
- [31] H. Basch, M. Krauss and W. J. Stevens, *J. Am. Chem. Soc.* **1985**, *107*, 7267-7271.
- [32] J. J. R. Fraudo da Silva and R. J. P. Williams, *The Biological Chemistry of Elements*, Oxford University Press, Oxford, **1991**, p.
- [33] H. Sigel, *Chem. Soc. Rev.* **1993**, *22*, 255-267.
- [34] S. Forsen and J. Kordel, *Bioinorganic Chemistry*, University Science Books, Mill Valley, California, **1994**, p.
- [35] Y. V. Bukhman and D. E. Draper, *J. Mol. Biol.* **1997**, *273*, 1020-1031.
- [36] B. K. Garg, U. Burman and S. Kathju, *Plant Growth Regulation* **2006**, *48*, 237-245.
- [37] B. Z. Zhu, W. E. Antholine and B. Frei, *Free Radical Biol. Med.* **2002**, *32*, 1333-1338.
- [38] M. Akagawa and K. Suyama, *Free Radical Res.* **2002**, *36*, 13-21.
- [39] H. Takahashi, A. Nishina, R. Fukumoto, H. Kimura, M. Koketsu and H. Ishihara, *Life Sci.* **2005**, *76*, 2185-2192.
- [40] M. van Zeijl, J. Fairhurst, T. R. Jones, S. K. Vernon, J. Morin, J. LaRocqe, B. Feld, B. O'Hara, J. D. Bloom and S. V. Johann, *J. Virology* **2000**, *74*, 9054-9061.
- [41] T. K. Venkatachalam, E. A. Sudbeck, C. Mao and F. M. Uckun, *Bioorg. & Med. Chem. Letters* **2001**, *11*, 523-528.
- [42] R. J. Visalli, J. Fairhurst, S. Srinivas, W. Hu, B. Feld, M. DiGrandi, K. Curran, A. Ross, J. D. Bloom, M. van Zeijl, T. R. Jones, J. O'Connell and J. I. Cohen, *J. Virology* **2003**, *77*, 2349-2358.

- [43] I. Corral, O. M6, M. Y6ñez, A. Scott and L. Radom, *J. Phys. Chem. A* **2003**, *107*, 10456-10461.
- [44] A. D. Becke, *J. Chem. Phys.* **1993**, *98*, 1372-1377.
- [45] C. Lee, W. Yang and R. G. Parr, *Phys. Rev. B* **1988**, *37*, 785-789.
- [46] M. A. Iron, M. Oren and J. M. L. Martin, *Mol. Phys.* **2003**, *101*, 1345-1361.
- [47] M. B. Sullivan, M. A. Iron, P. C. Redfern, J. M. L. Martin, L. A. Curtiss and L. Radom, *J. Phys. Chem. A* **2003**, *107*, 5617-5630.
- [48] A. P. Scott and L. Radom, *J. Phys. Chem.* **1996**, *100*, 16502-16513.
- [49] M. J. Frisch, G. W. Trucks, H. B. Schlegel, G. E. Scuseria, M. A. Robb, J. R. Cheeseman, V. G. Zakrzewski, J. J. A. Montgomery, T. Vreven, K. N. Kudin, J. C. Burant, J. M. Millam, S. S. Iyengar, J. Tomasi, V. Barone, B. Mennucci, M. Cossi, G. Scalmani, N. Rega, G. A. Petersson, H. Nakatsuji, M. Hada, M. Ehara, K. Toyota, R. Fukuda, J. Hasegawa, M. Ishida, T. Nakajima, Y. Honda, O. Kitao, C. Adamo, J. Jaramillo, R. Gomperts, R. E. Stratmann, O. Yazyev, J. Austin, R. Cammi, C. Pomelli, J. Ochterski, P. Y. Ayala, K. Morokuma, G. A. Voth, P. Salvador, J. J. Dannenberg, V. G. Zakrzewski, S. Dapprich, A. D. Daniels, M. C. Strain, O. Farkas, D. K. Malick, A. D. Rabuck, K. Raghavachari, J. B. Foresman, J. V. Ortiz, Q. Cui, A. G. Baboul, S. Clifford, J. Cioslowski, B. B. Stefanov, G. Liu, A. Liashenko, P. Piskorz, I. Komaromi, R. L. Martin, D. J. Fox, T. Keith, M. A. Al-Laham, C. Y. Peng, A. Nanayakkara, M. Challacombe, P. M. W. Gill, B. Johnson, W. Chen, M. W. Wong, C. Gonzalez and J. A. Pople in *Gaussian03, Vol. Gaussian, Inc., Wallingford CT, 2003*.
- [50] R. F. W. Bader, *Atoms in Molecules. A Quantum Theory*, Clarendon Press, Oxford, **1990**, p.
- [51] J. Kohno, F. Mafune and T. Kondow, *J. Phys. Chem. A* **1999**, *103*, 1518-1522.
- [52] H. Studer, H. Kohler, H. B6urgi, C. Binswanger and J. Steiger, *Endocrinology* **1972**, *91*, 1154-1159.
- [53] F. Wang, S. Ma, D. Zhang and R. G. Cooks, *J. Phys. Chem. A* **1998**, *102*, 2988-2994.
- [54] J. L. M. Abboud, O. M6, J. L. G. de Paz, M. Y6ñez, M. Esseffar, W. Bouab, M. El-Mouhtadi, R. Mokhlisse, E. Ballesteros and et al., *J. Am. Chem. Soc.* **1993**, *115*, 12468-12476.
- [55] M. Alcam6, O. M6 and M. Y6ñez in *Modeling intrinsic basicities: the use of the electrostatic potentials and the atoms-in-molecules theory, Vol. 3* Eds.: J. S. Murray and K. Sen), Elsevier, Amsterdam, **1996**, pp. 407-456.
- [56] A. J. Stace, N. R. Walker, R. R. Wright and S. Firth, *Chem. Phys. Lett.* **2000**, *329*, 173-175.
- [57] A. A. Shvartsburg and K. W. M. Siu, *J. Am. Chem. Soc.* **2001**, *123*, 10071-10075.

[58] *It should be mentioned that although the  $\text{HNCS}^+ + \text{CaNH}_3^+$  dissociation limit is lower than the  $\text{HNCS} + \text{CaNH}_3^{2+}$ , both complexes **5** and **7** dissociate diabatically into  $\text{HNCS} + \text{CaNH}_3^{2+}$ , while their dissociation into  $\text{HNCS}^+ + \text{CaNH}_3^+$  requires a very high activation barrier through a conical intersection that lies 360 kJ/mol above local minimum **7** as estimated in CASSCF(4,4)/6-31G\* level of theory*

[59] S. A. McLuckey, D. Cameron and R. G. Cooks, *J. Am. Chem. Soc.* **1981**, *103*, 1313-1317.

[60] R. G. Cooks, J. S. Patrick, T. Kotiaho and S. A. McLuckey, *Mass Spectrom. Rev.* **1994**, *13*, 287-339.

[61] *NIST Chemistry Webbook. Standard Reference Database Number 69. Eds. P.J. Linstrom and W.G. Mallard, Release June 2005, National Institute of Standards and Technology, Gaithersburg MD, 20899 (<http://webbook.nst.gov>). 2005.*

[62] L. Gonzalez, O. Mo and M. Yanez, *J. Phys. Chem. A* **1997**, *101*, 9710-9719.

[63] M. Lamsabhi, M. Alcamí, O. Mo, W. Bouab, M. Esseffar, J. L. M. Abboud and M. Yanez, *J. Phys. Chem. A* **2000**, *104*, 5122-5130.

[64] S. Sklenak, Y. Apeloig and Z. Rappoport, *J. Chem. Soc. Perkin Trans. 2* **2000**, 2269-2279.