



HAL
open science

NonThermal Continuum Radiation Observed from the CLUSTER Fleet

Pierrette Décréau, S. Grimald, Michel Parrot, O. Randriamboarison,
Jean-Louis Rauch, Jean-Gabriel Trotignon, X. Vallieres, P. Canu, Nicole
Cornilleau, J. Pickett, et al.

► **To cite this version:**

Pierrette Décréau, S. Grimald, Michel Parrot, O. Randriamboarison, Jean-Louis Rauch, et al.. Non-Thermal Continuum Radiation Observed from the CLUSTER Fleet. Cluster and Double Star symposium. 5th Anniversary of Cluster in Space, Sep 2005, Noordwijk, Netherlands. hal-00154413

HAL Id: hal-00154413

<https://hal.science/hal-00154413>

Submitted on 11 Jun 2020

HAL is a multi-disciplinary open access archive for the deposit and dissemination of scientific research documents, whether they are published or not. The documents may come from teaching and research institutions in France or abroad, or from public or private research centers.

L'archive ouverte pluridisciplinaire **HAL**, est destinée au dépôt et à la diffusion de documents scientifiques de niveau recherche, publiés ou non, émanant des établissements d'enseignement et de recherche français ou étrangers, des laboratoires publics ou privés.

Non Thermal Continuum radiation observed from the Cluster fleet



*P. Décréau, S. Grimald, M. Parrot, O. Randriamboarison, J.-L. Rauch,
J._G. Trotignon, X. Vallières, LPCE Orléans, F.*

P. Canu, N. Cornilleau, CETP Vélizy, F.

J. Pickett, Iowa Univ., USA

O. Santolik, St Charles Univ., Prague, Czech Rep.

M. P. Gough, A. M. Buckley, T. D. Carozzi, SSS, Sussex Univ., GBR

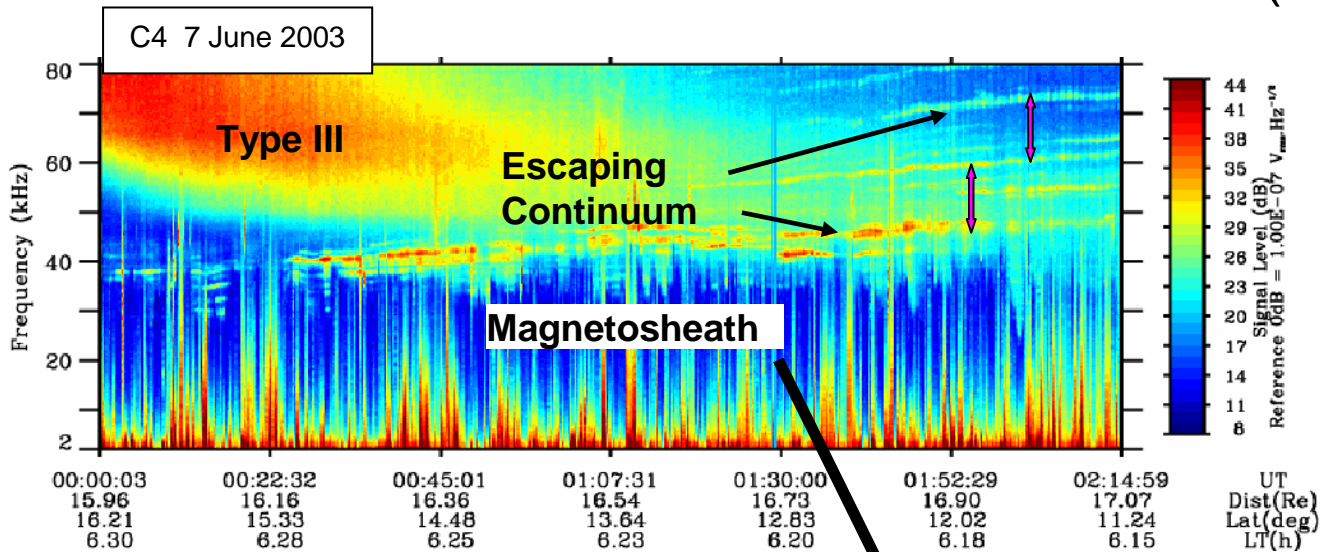
A. Masson, RSSD, Noordwijk, The Netherlands

5th Anniversary of Cluster in Space
19-23 September, ESTEC

NTC observed from the Cluster fleet

1. Generalities
2. Advances with Cluster observations
 - Ray path from multipoint observatory
 - Sources
3. Summary and perspectives

1.1 What is Non Thermal Continuum (NTC)?



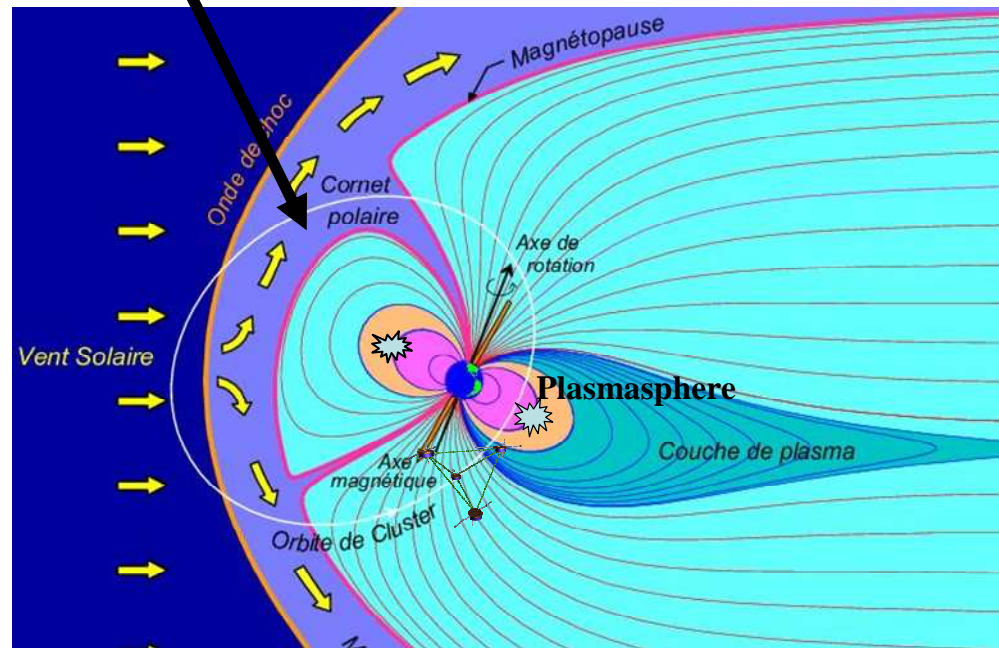
NTC and Type III:

$$\sim 10^{-16} \text{ V}^2 \text{ M}^{-2} \text{ Hz}^{-1}$$

$$\Delta F \sim F_{ce} \text{ at source}$$

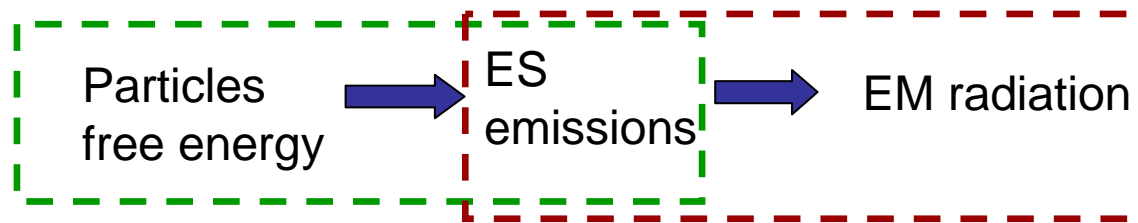
NTC radiations are:

- weak, long lasting, narrow band, EM emissions
- observed (since 1970s), in almost all regions of magnetosphere, they can escape in the interplanetary medium



1.2 What is the source of NTC?

General scheme of NTC generation:



This happens at the plasmopause boundary layer

NTC formation is largely not understood. How to explain:

Duration of emissions?

Spectral characteristics (narrow bands, harmonic structures)?

Wave intensity?

Beaming properties?

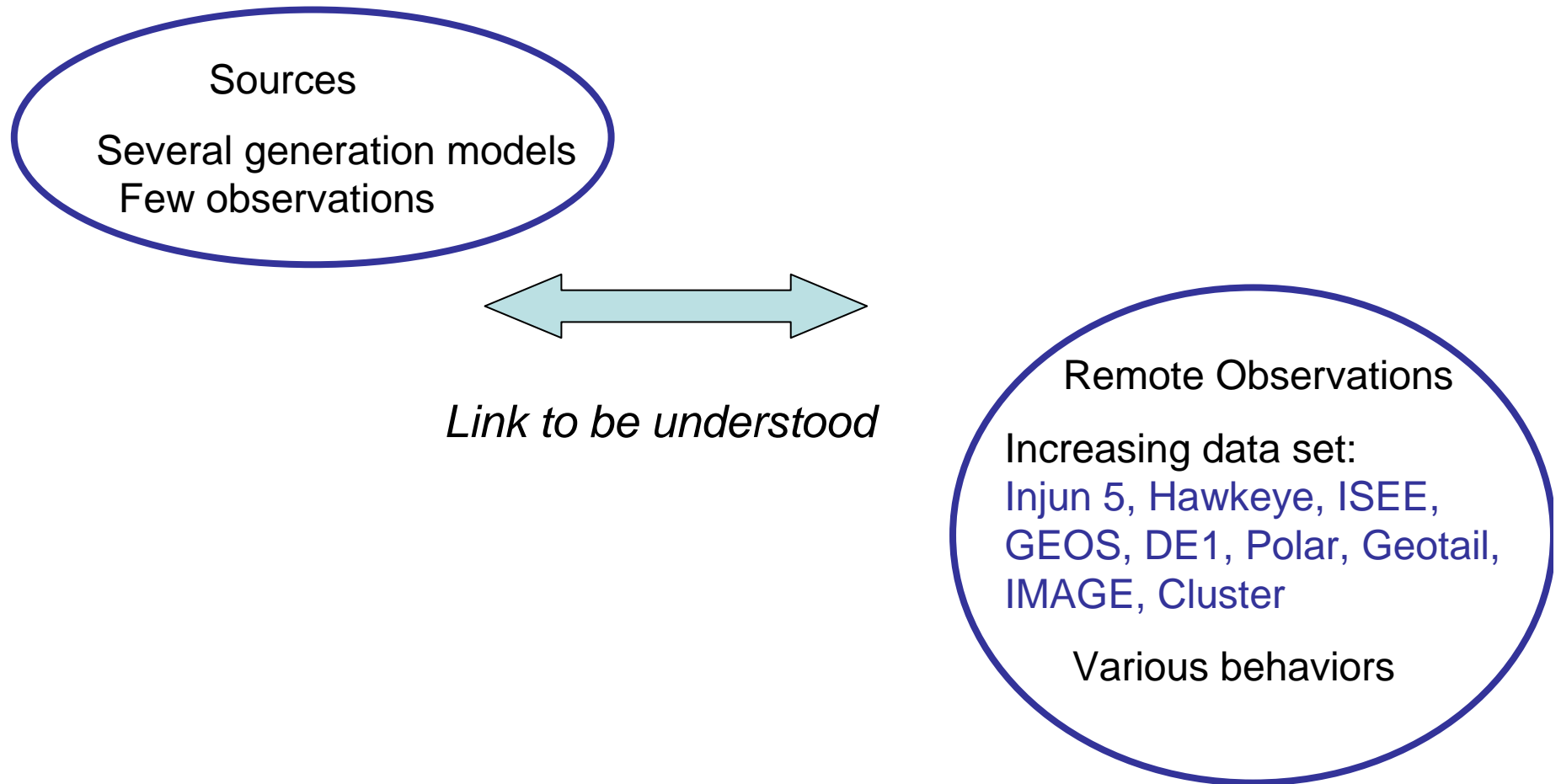
Models

Radio window
at grad (Ne)
Jones, 1982

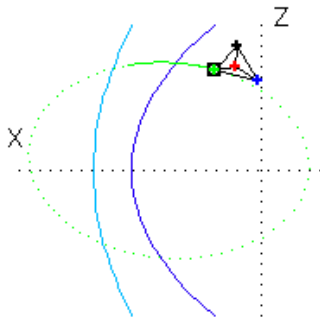
N.L. processes

- coalescence with LF waves
Melrose, 1981
- decay of Bernstein waves
Rönmark, 1985

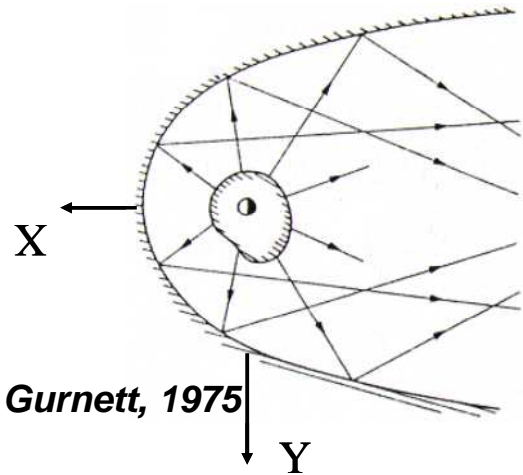
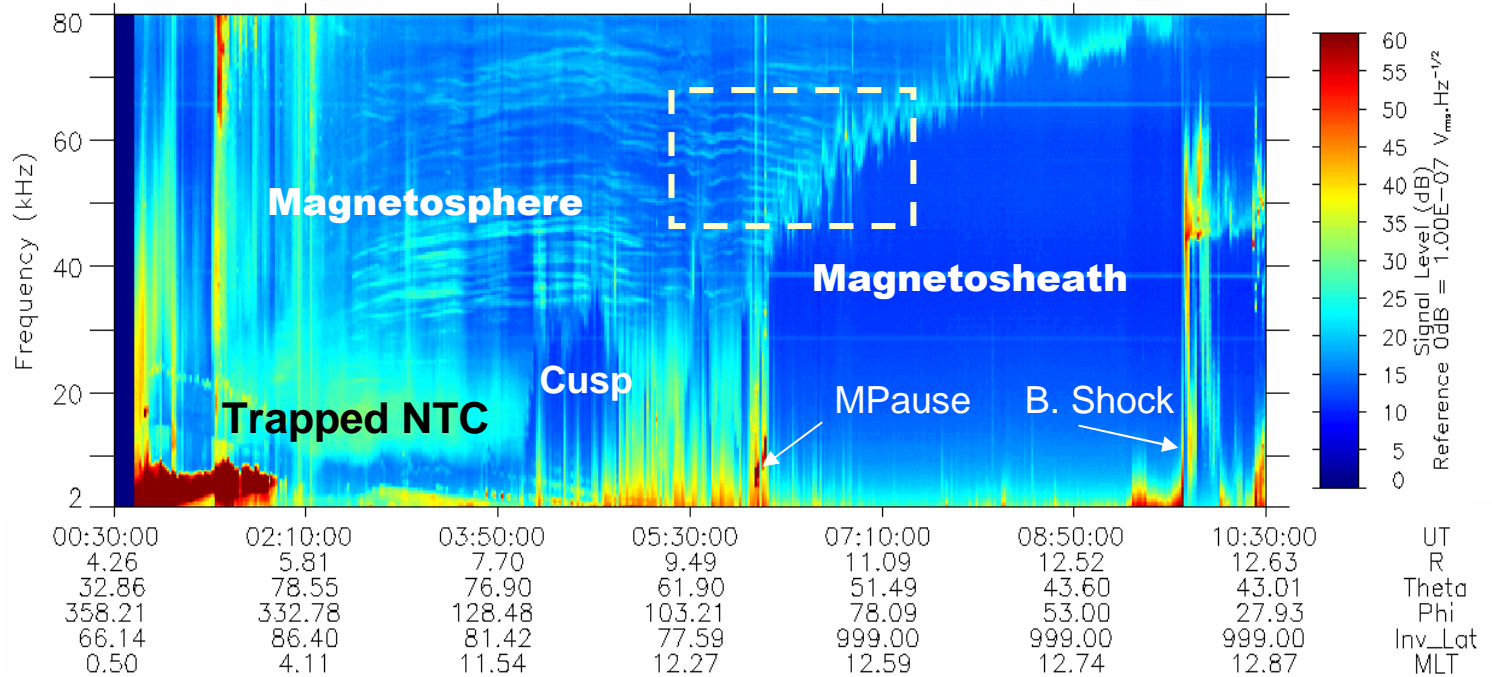
1.3 Current studies



1.4 How does NTC propagate?



26/02/2001



Gurnett, 1975

5th

- NTC radiation emerges from sources at PPause boundary layer. It is beaming predominantly near equatorial plane.
- The lower frequency band is trapped inside the magnetospheric cavity, bouncing between MPause(/cusp) and Plasmapause

2. Advances with Cluster observations

- Ray path from multipoint observatory
2 examples
- Sources

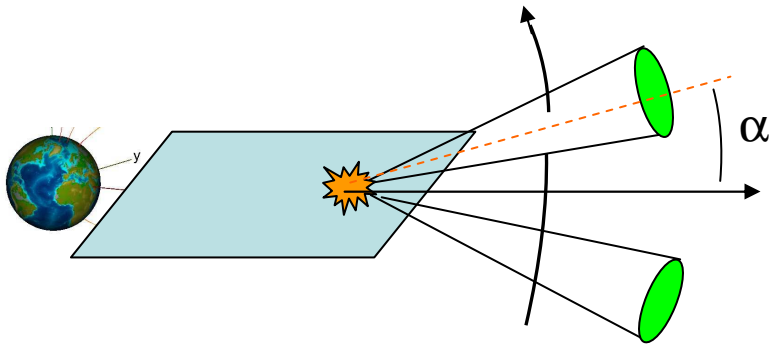
Example 1: Beaming properties

Test of Jones theory

(ES to EM conversion)

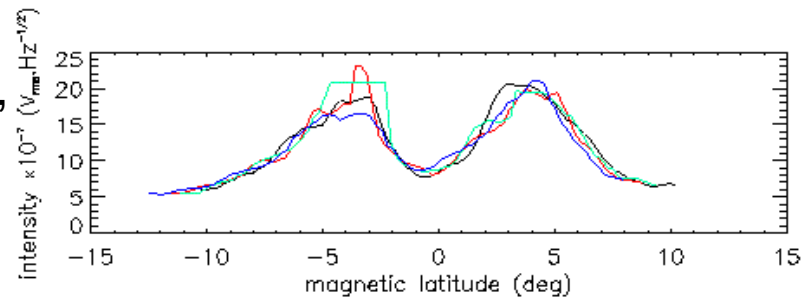
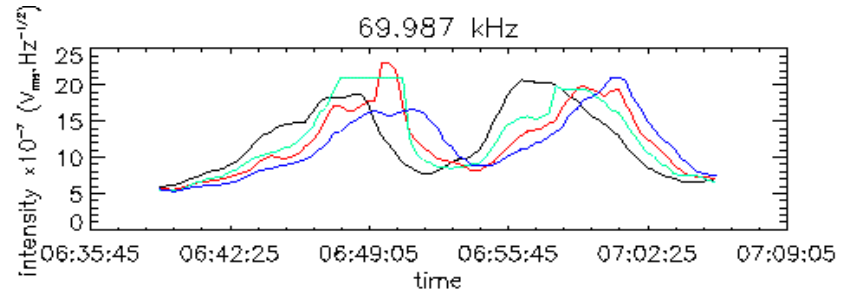
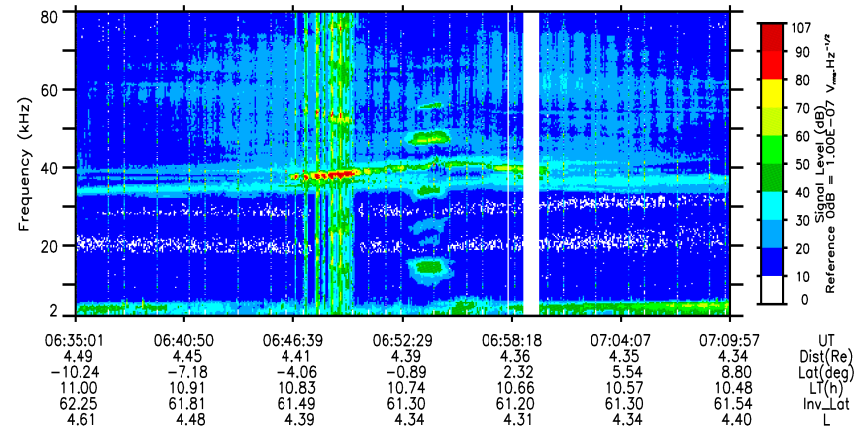
2 narrow beams, symmetric / equator

$$\alpha = \arctan(f_{ce}/f_{pe})^{1/2}$$

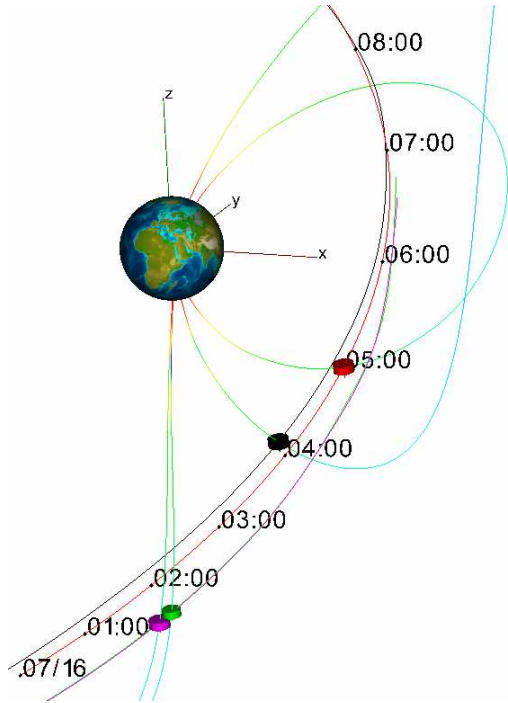


- No definitive conclusion has been reached, concerning the validity of Jones theory
- Cluster orbit does not cross a beam pair issued from the same source

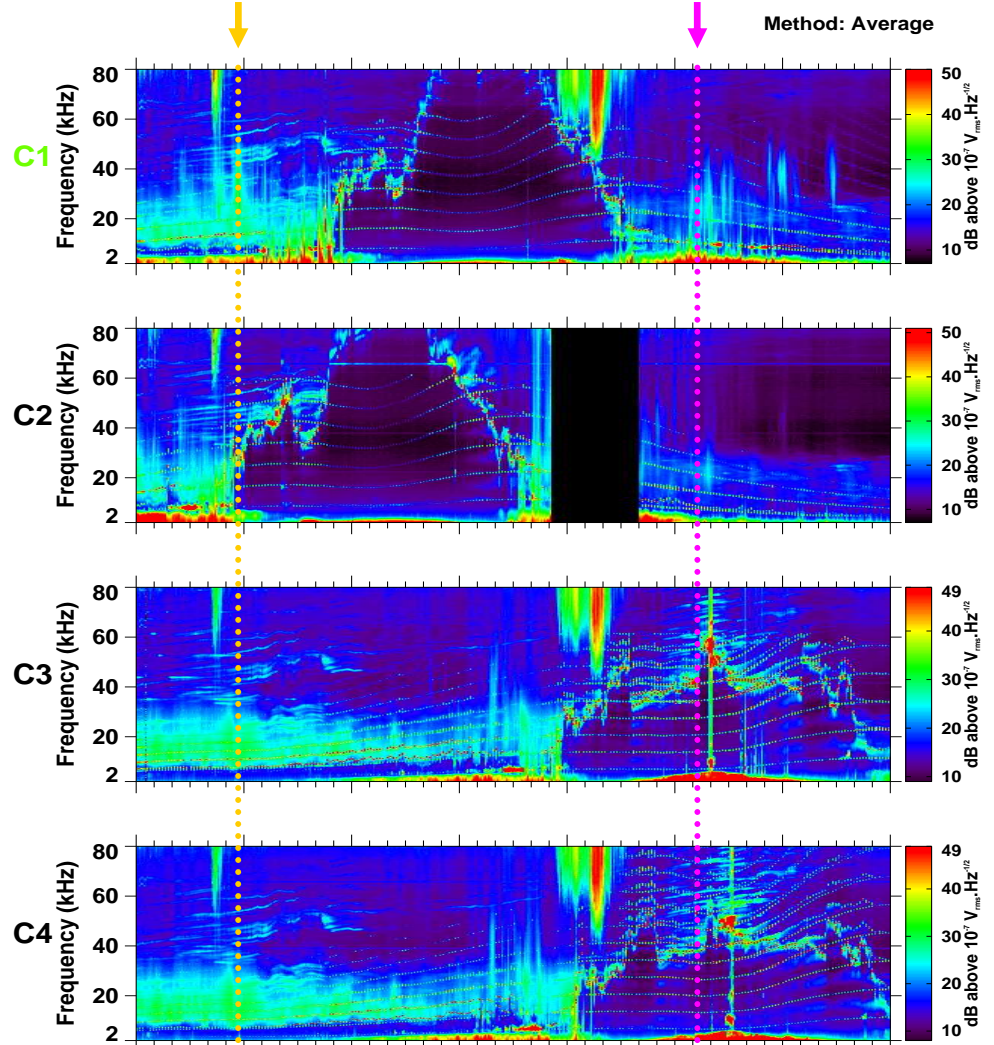
26/09/03 Separation ~ 250 km



Example 2: Observation of narrow band emissions



CLUSTER-WHISPER Spectrogram / JUL 16, 2005 (Day 197)



Far from equator, the four SC see exactly the same emission

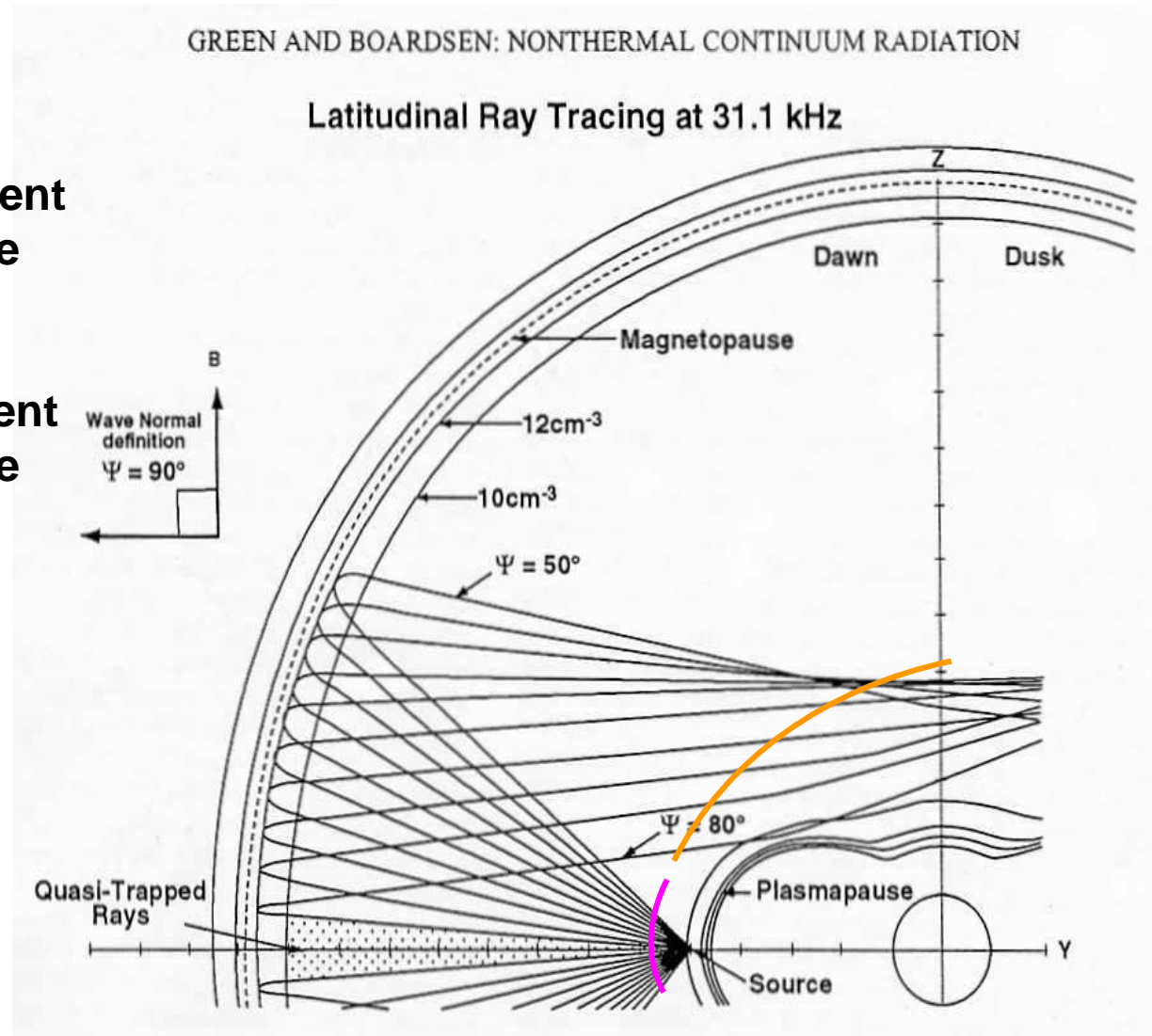
Only part of the constellation is illuminated near the equator



UT	04:00:00	05:00:00	06:00:00	07:00:00	08:00:00	09:00:00	10:00:00	11:00:00
X_gse(Re)	-0.82	0.42	1.62	2.60	3.12	3.09	2.61	1.88
Y_gse(Re)	4.04	4.50	4.57	4.04	2.81	1.08	-0.82	-2.66
Z_gse(Re)	-5.78	-4.18	-2.23	-0.00	2.21	4.04	5.31	6.09
Lat_sm(deg)	-62.41	-50.30	-31.75	-5.89	24.54	53.39	76.84	84.15
Cluster ID	15.39	15.30	15.59	15.39	15.30	15.59	15.39	15.30

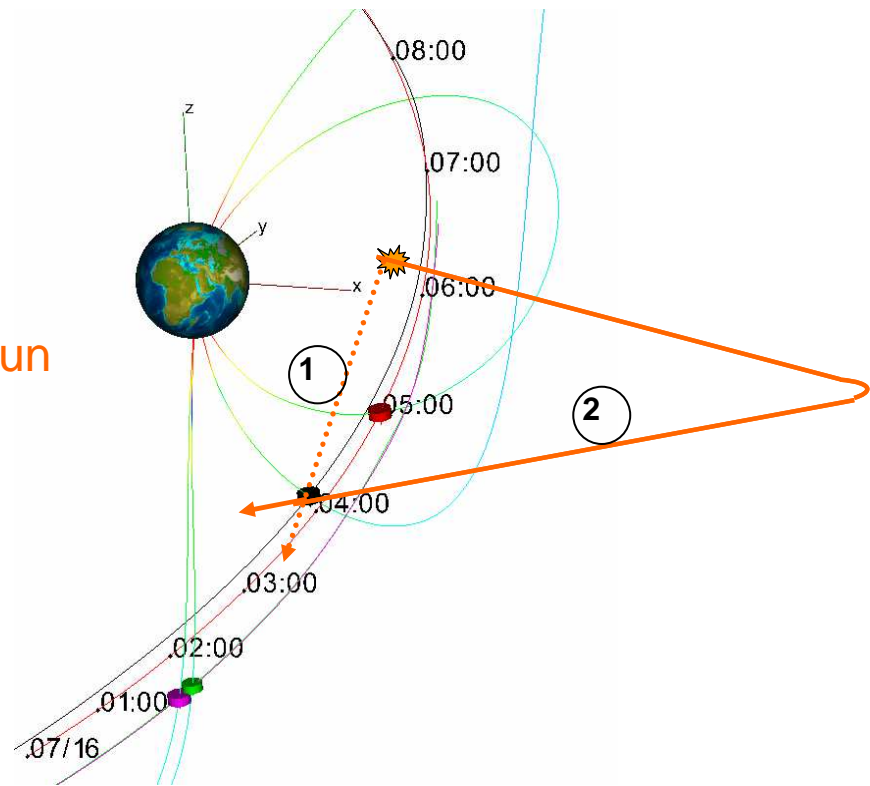
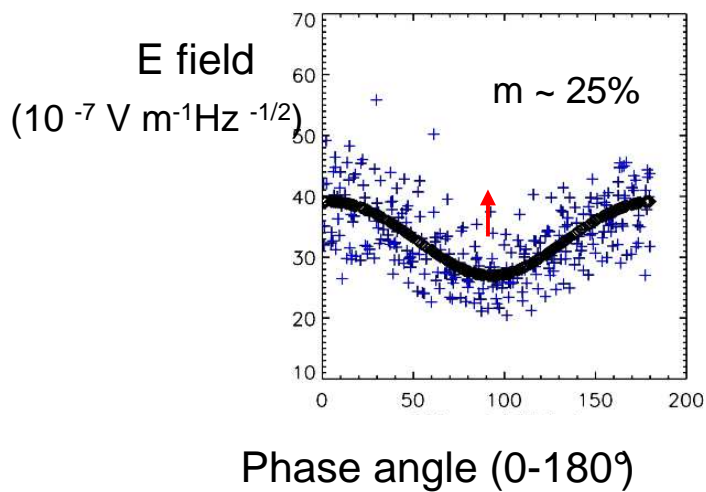
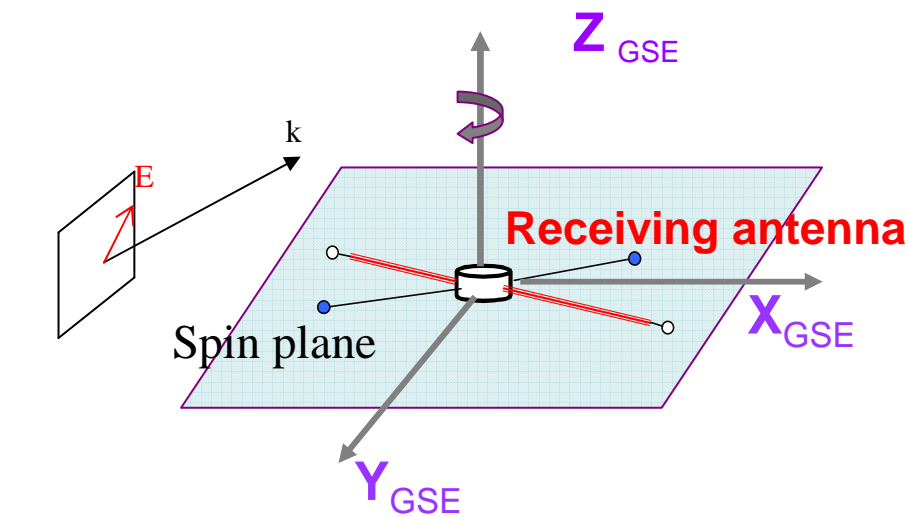
Interpretation

- A small orbit element is illuminated by the direct path
- A large orbit element is illuminated by the reflected radiation



Meridian plane

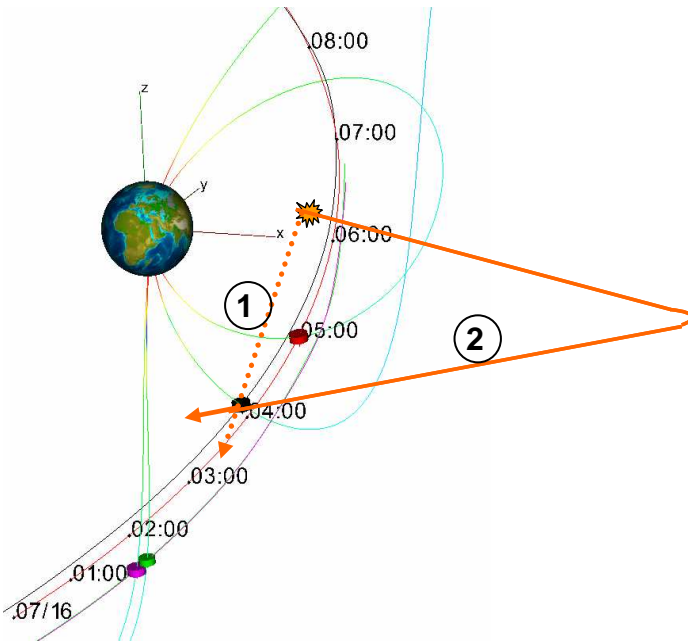
Spin modulation as a clue to ray path orientation



The spin modulation gives an estimation of the inclination of the ray wrt the spin plane

It allows to find out if the ray reaches the observatory directly (1) or after a reflection (2)

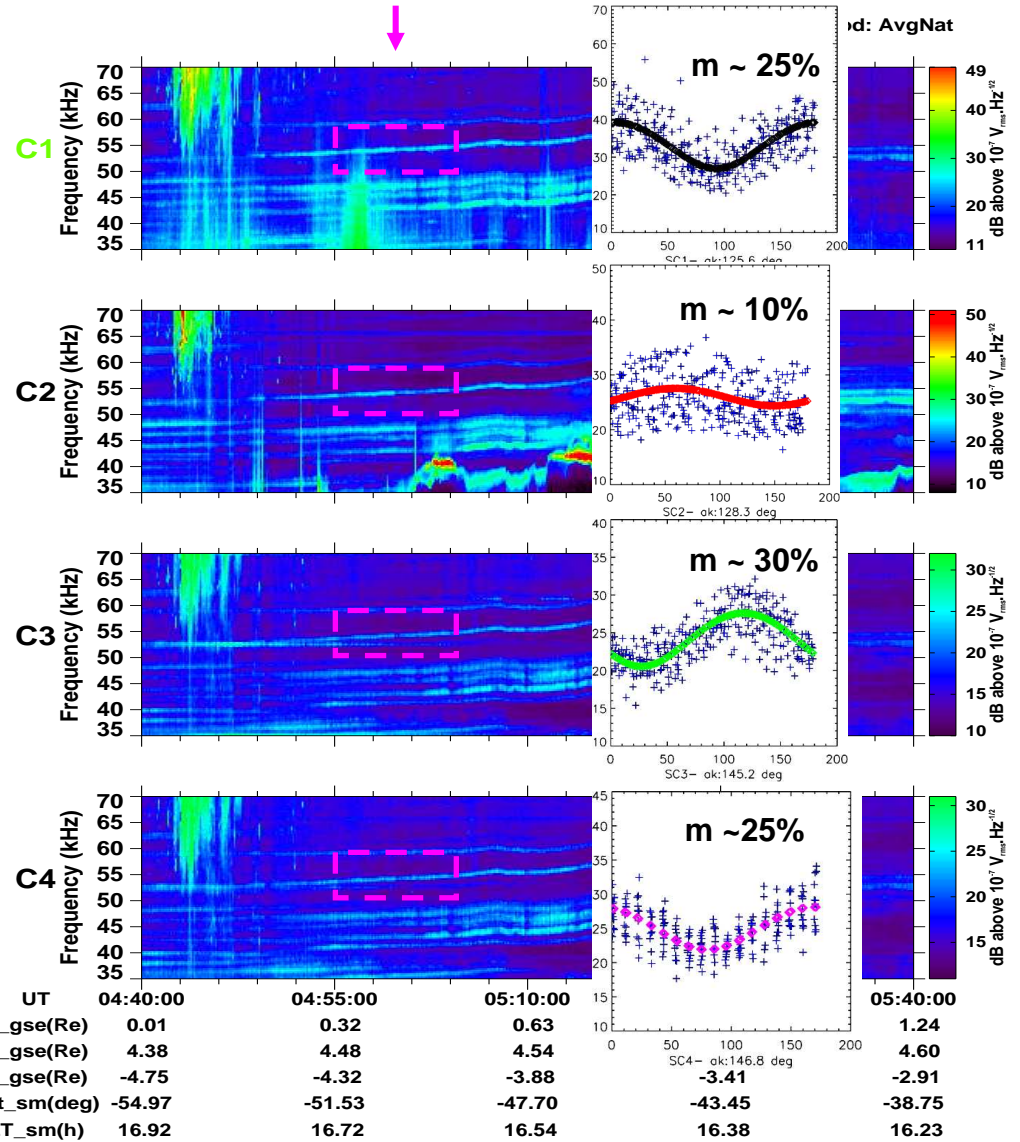
Compared spin modulations



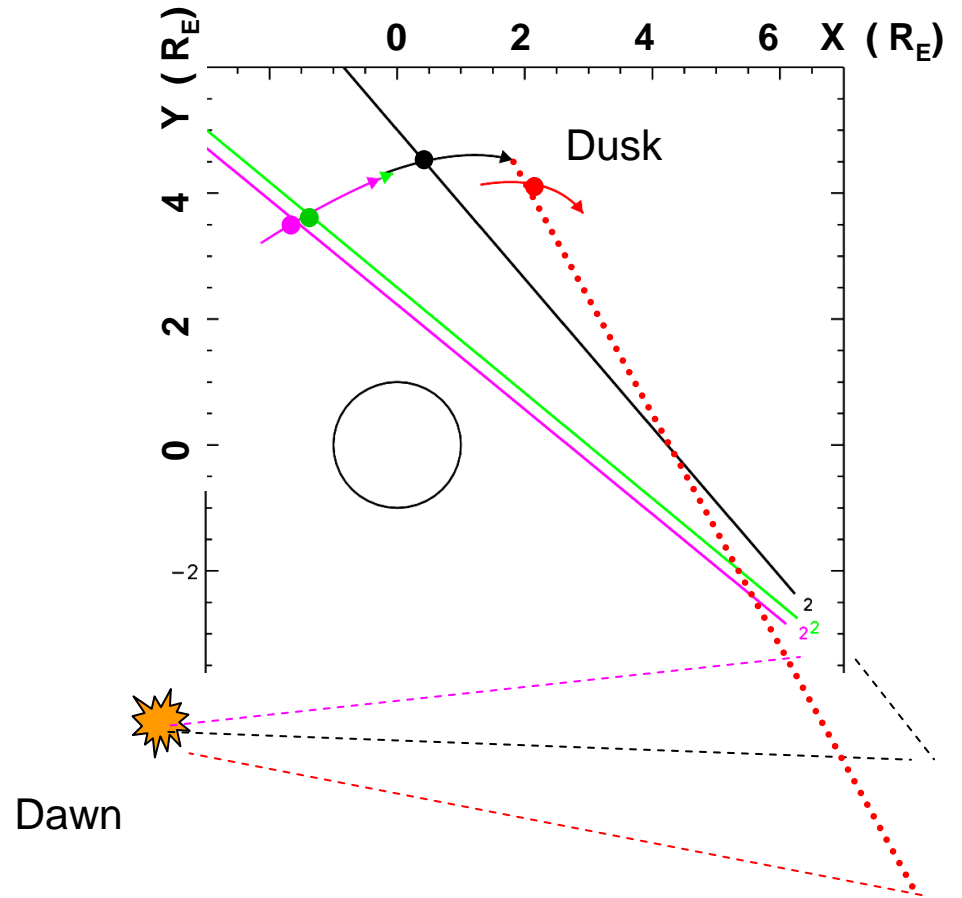
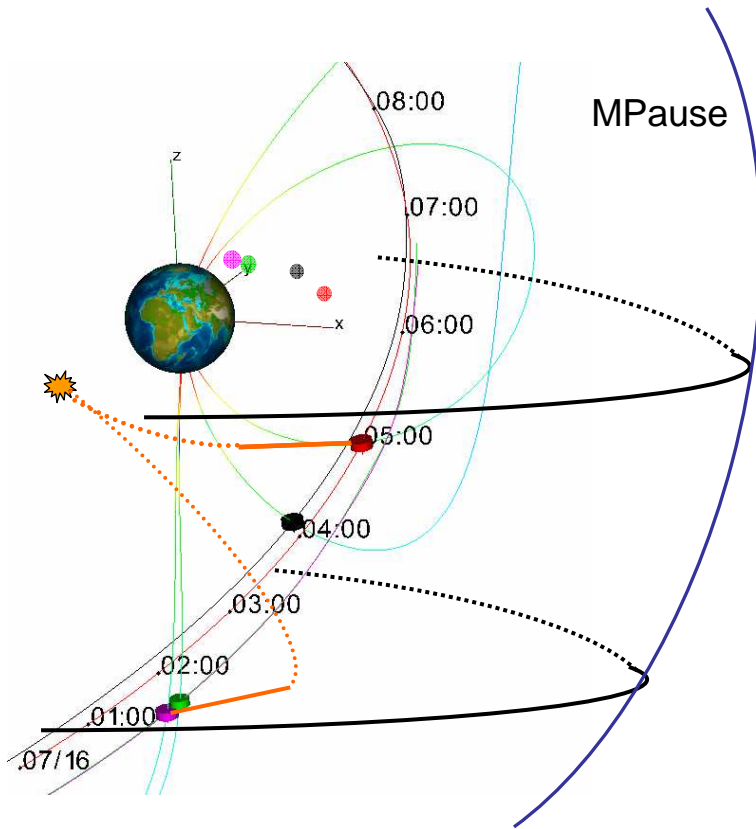
Modulation values indicate that beams have been reflected

Directivity angles complete the information

CLUSTER-WHISPER Spectrogram / JUL 16, 2005 (Day 197)



Triangulation points toward high X value, it is compatible with the proposed scenario

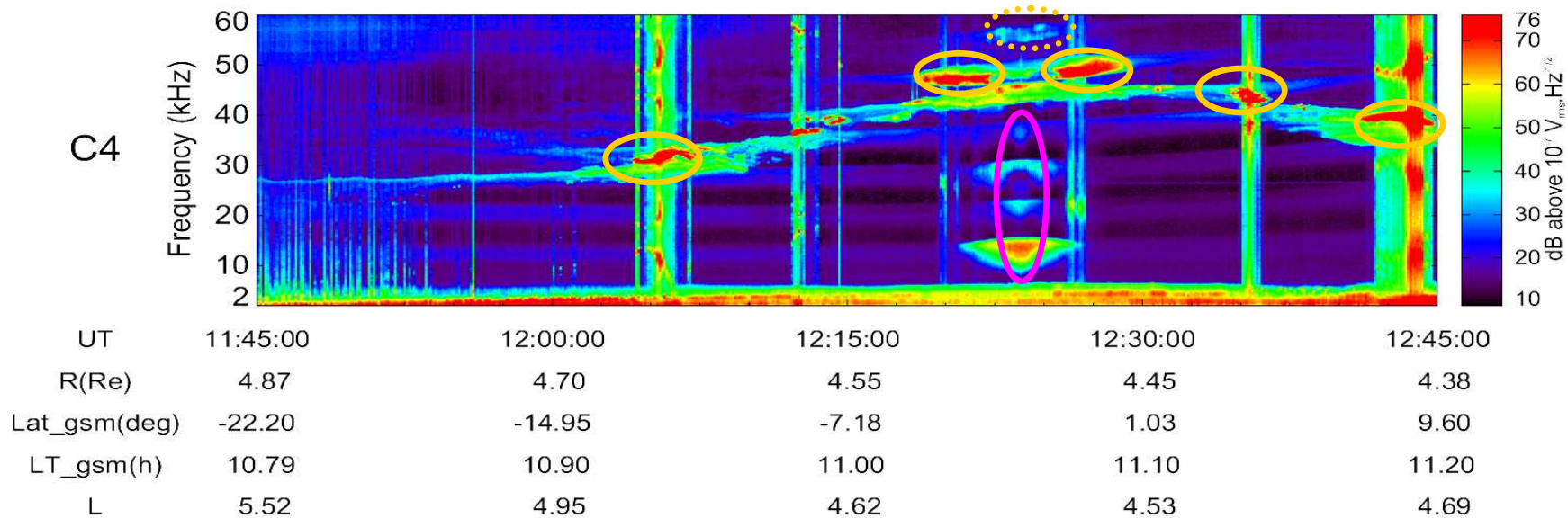


- Conclusion: the origin of beams observed in the dusk sector is probably a source placed in the dawn sector

2. Advances with Cluster observations

- Ray path from multipoint observatory
- Sources

NTC Sources: Which candidate Electrostatic Emissions ?



- ***Equatorial $n+1/2$?***

Too far from density gradient (inside plasmasphere)

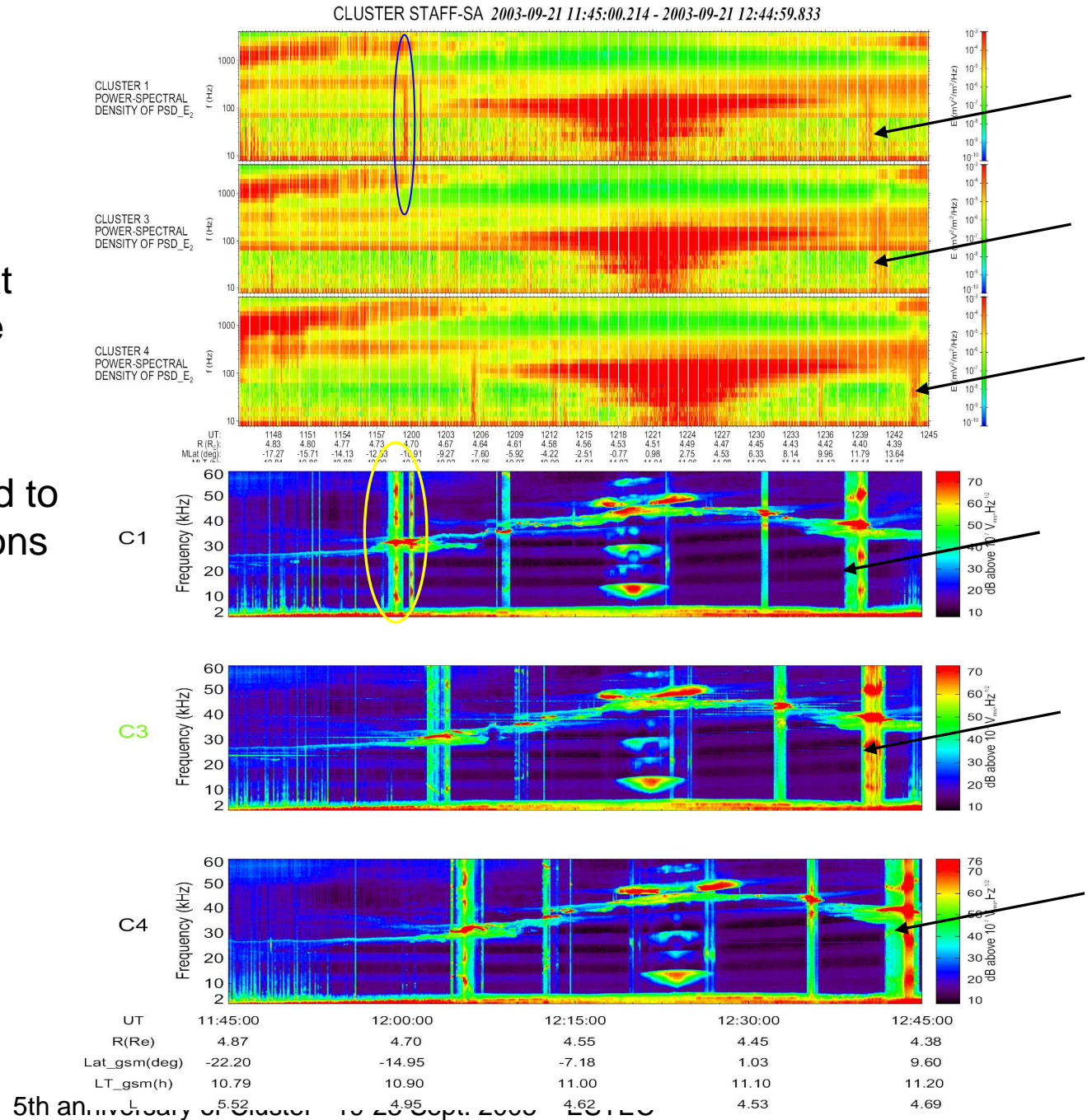
- ***Intense (saturating) emissions at PPause density gradient ?***

Observed just above F_p (in the band $F_p - F_q$), close to equator

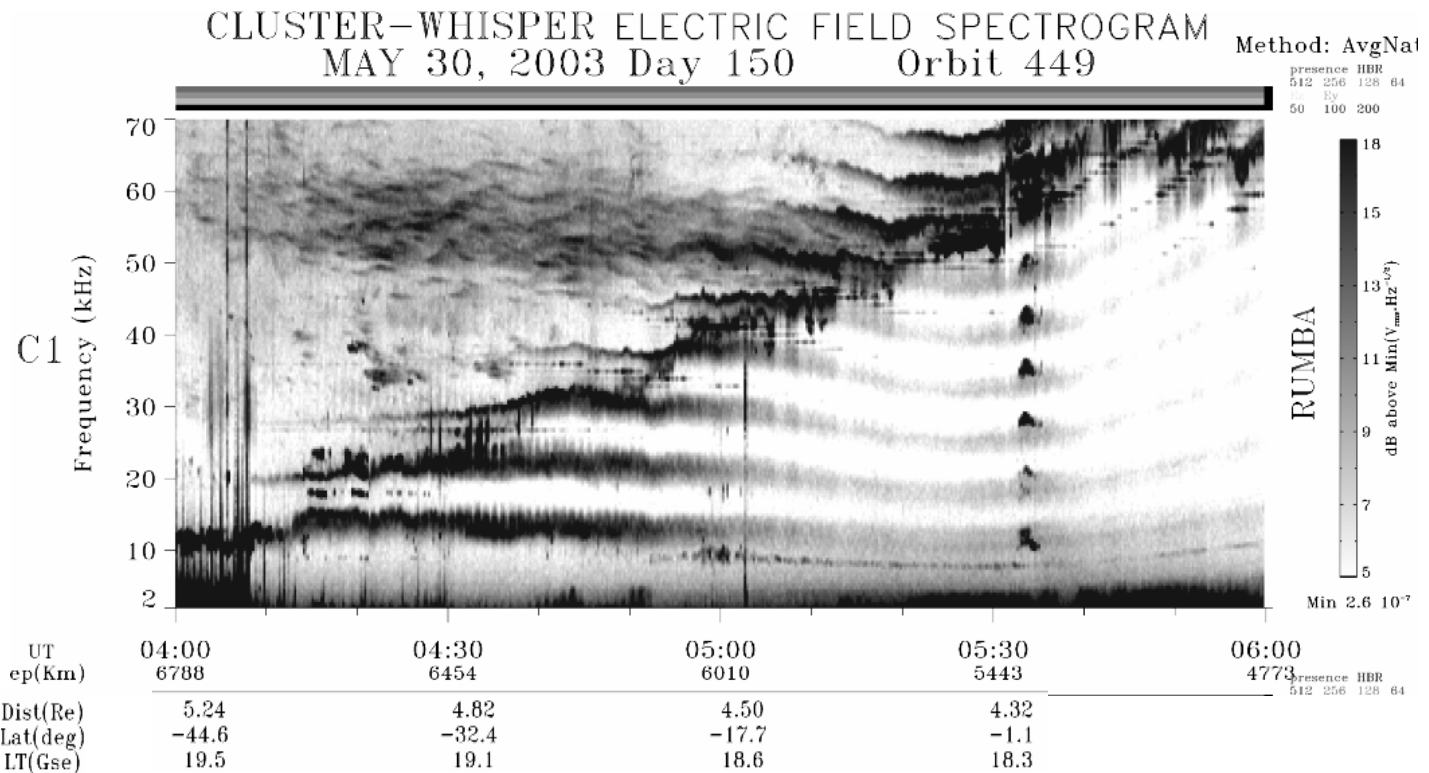
Good candidates for the main forms of NTC

NTC Sources

- Intense ES emissions at plasmopause surface are often associated with LF broadband emissions
- More analysis is needed to interpret these observations

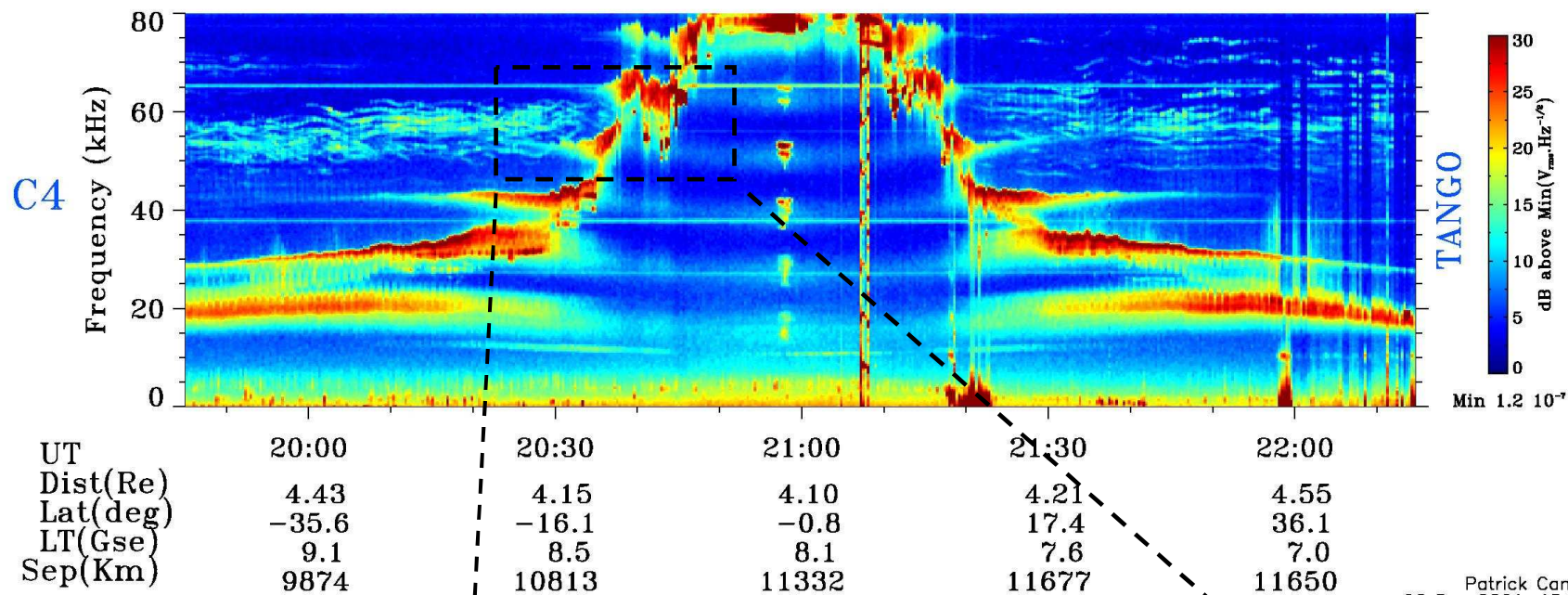


Role of Bernstein waves



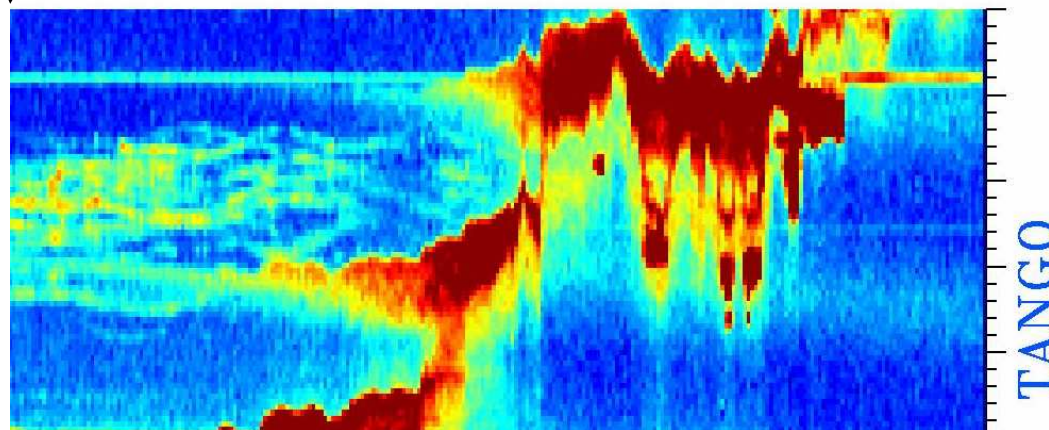
Several examples show convincing evidence of a link between ES emission at local Fqs (Bernstein mode) and simultaneously observed NTC

Canu et al., 2005



Patrick Canu
06 Dec 2001, 15:51

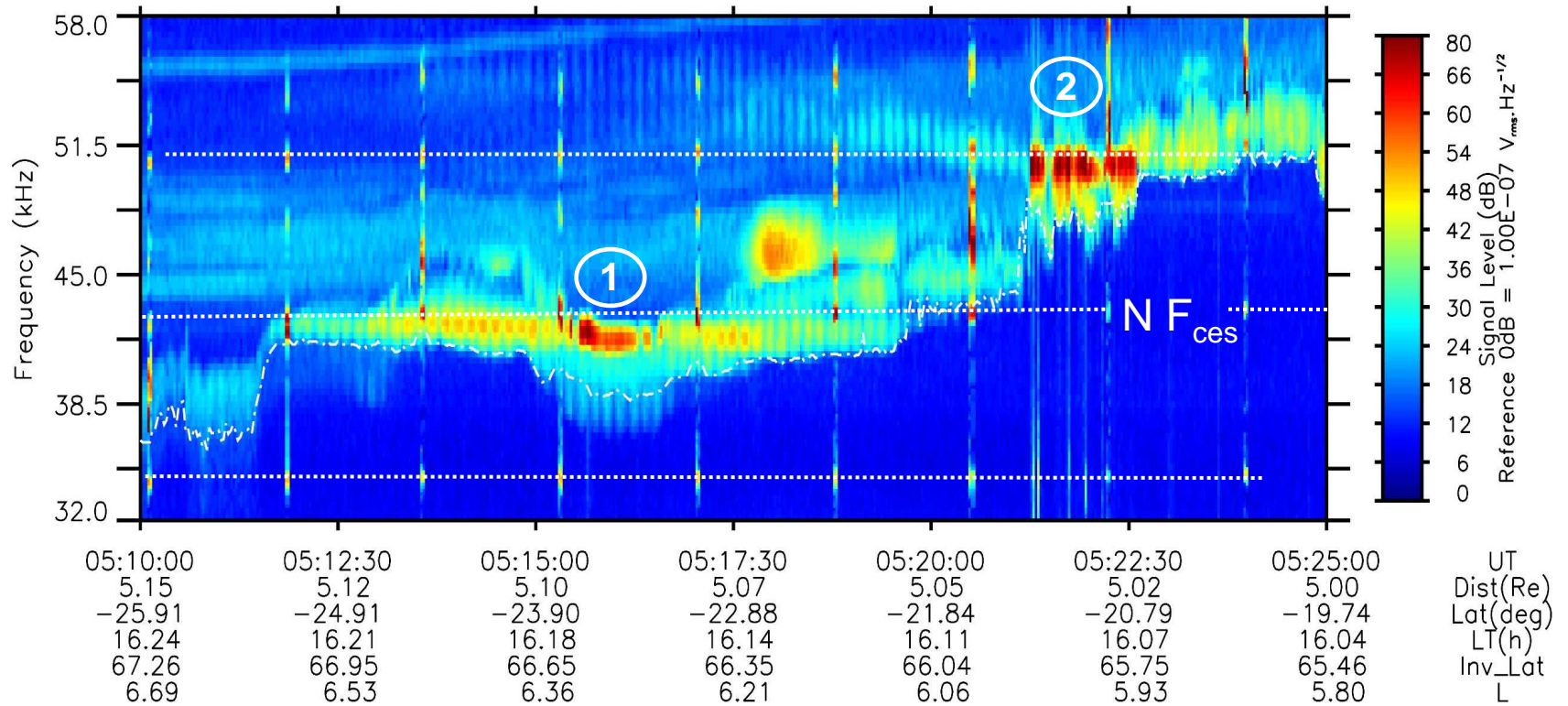
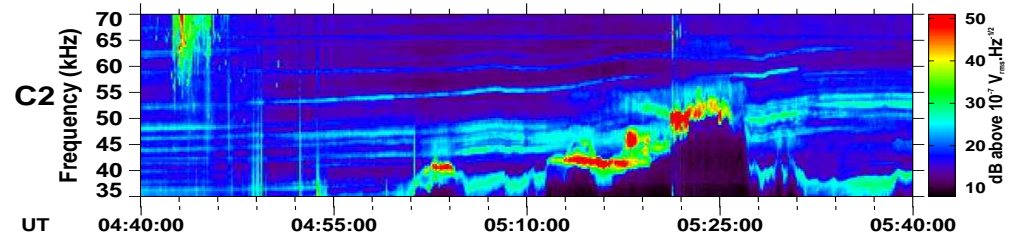
Possibly linked with
small density cavities



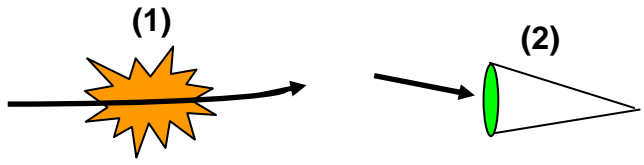
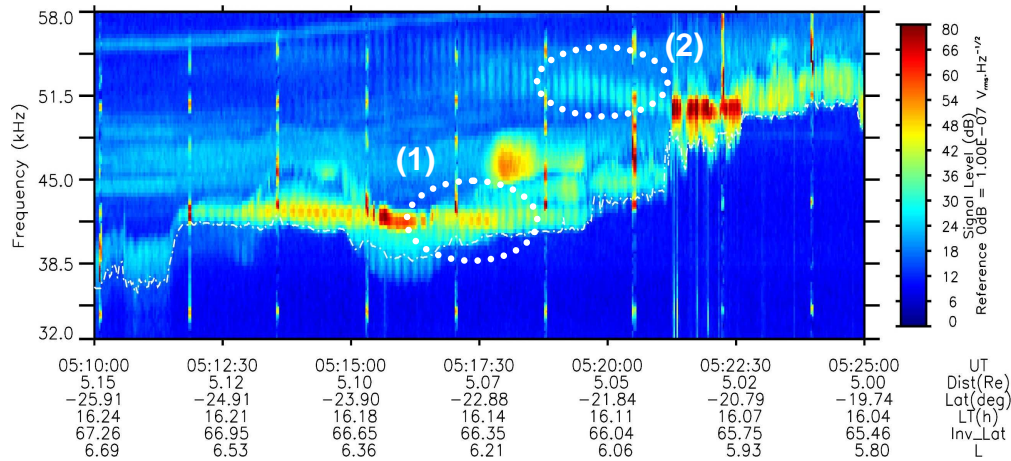
5th anniversary of Cluster 19-23 Sept. 2005 ESTEC

NTC observed at sources

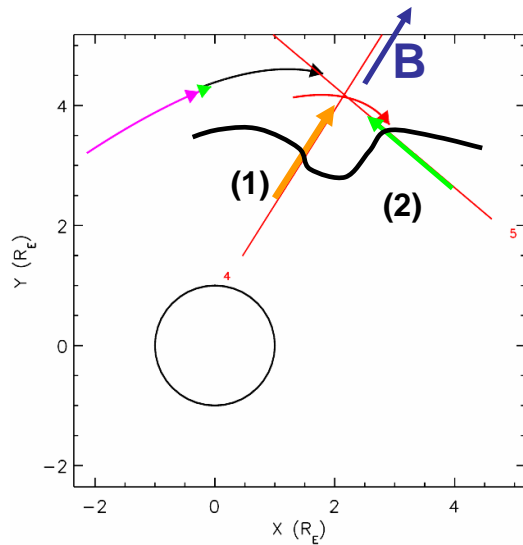
More from the 16 July 2005 event
EM emissions near density cavities



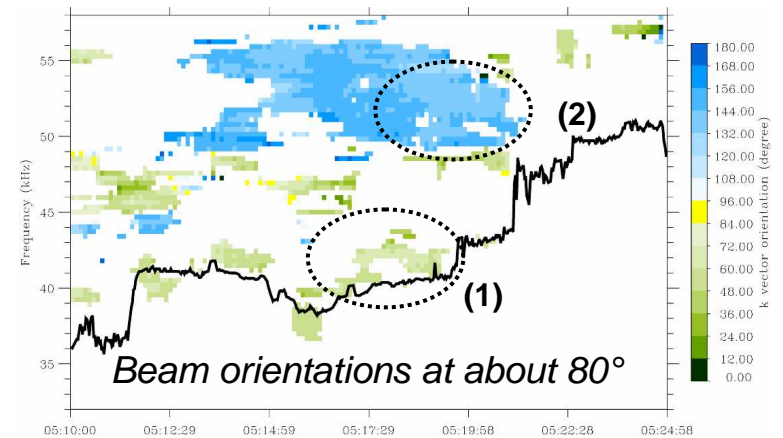
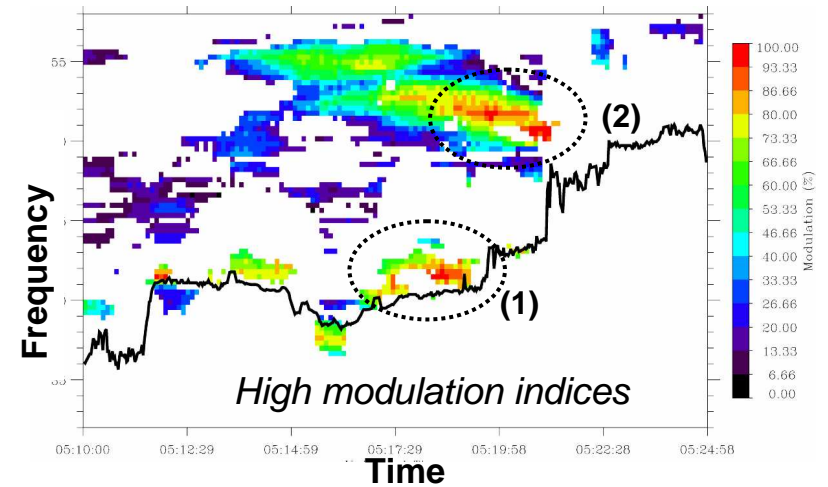
Analysis of directivity properties



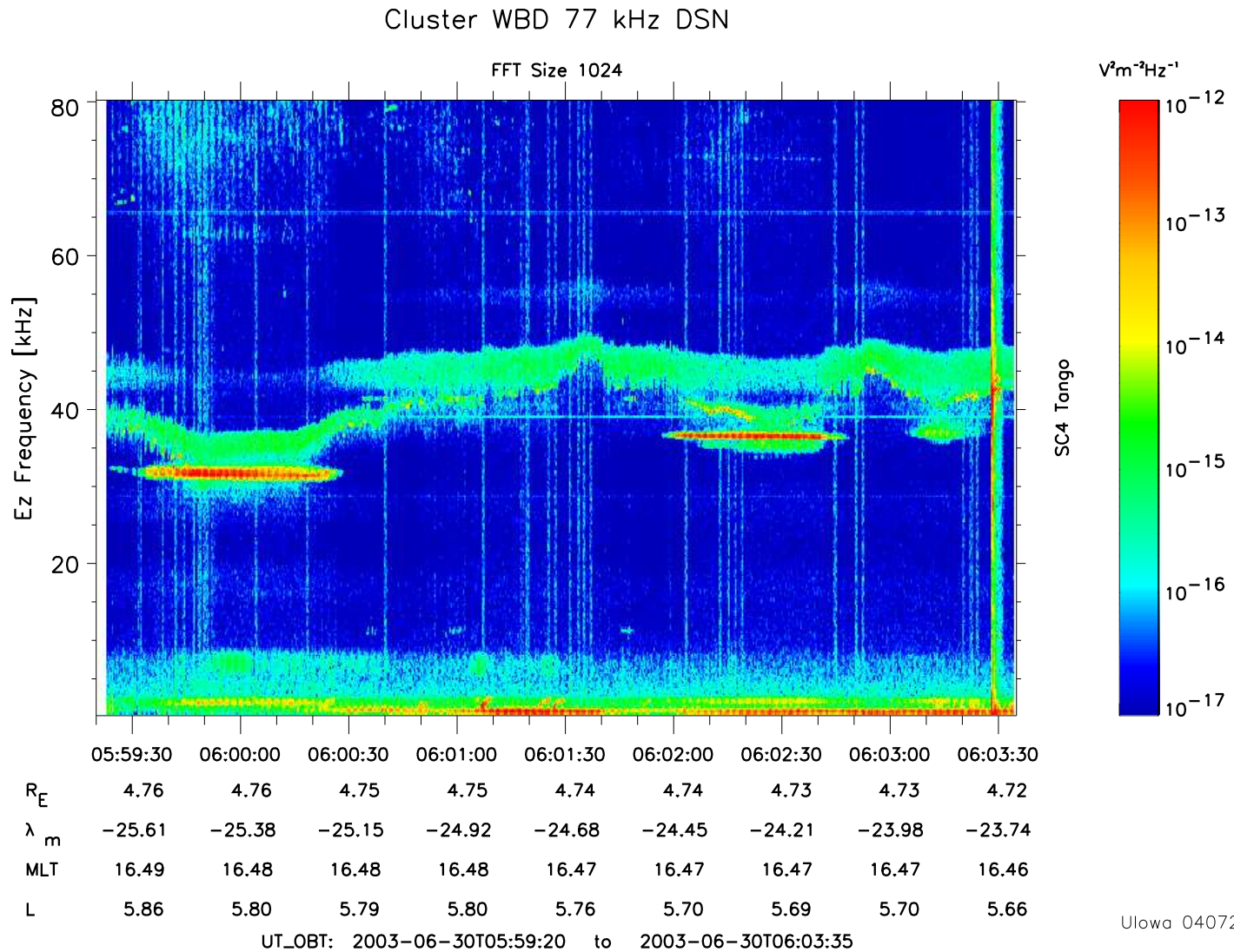
Ripples in the PPause boundary (rays aligned with density gradient) could explain different beam orientations



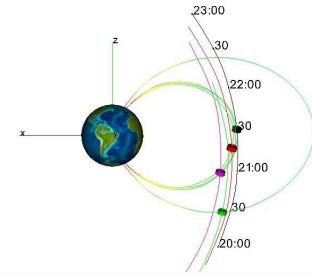
Study in the spin plane (parallel to XY GSE)



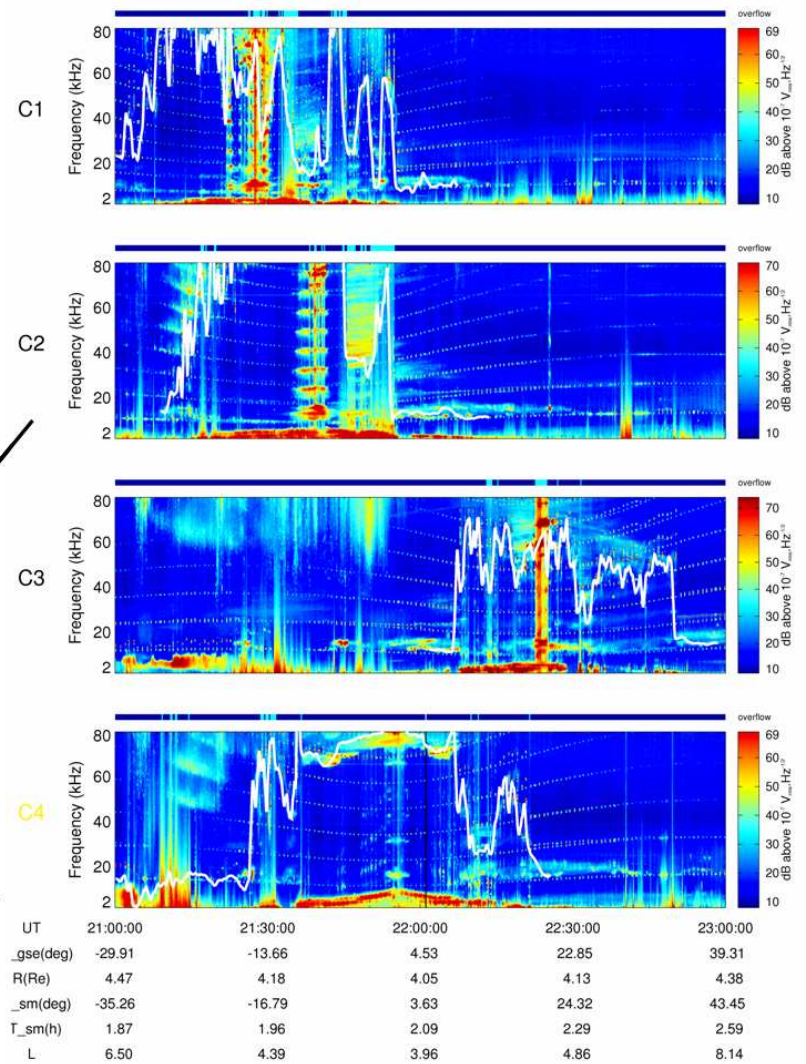
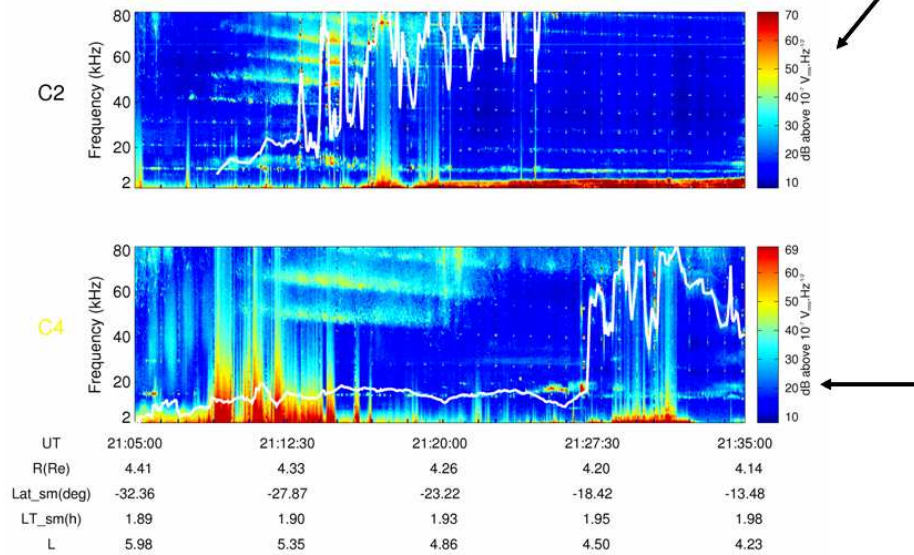
WBD instrument offers a good time/frequency resolution of 'micro' sources



Other large scale findings



- Simultaneous observations of harmonic 'large band' NTC structures
- Different spectral characteristics when viewed from different SC
- Local sources (off equator) are illuminating short orbit elements



5. Summary and conclusion

- Various types of ES emissions observed in the Ppause boundary layer
 - (a) Intense emissions in $F_{pe} - F_q$ band
 - (b) 'Micro' sources, in density holes, some at $n F_{ce}$
- Two main types of structured EM radiations observed in magnetosphere:
 - (a) multiple narrow spectral lines, radiating over a long range, having undergone one reflection at Msheath in many cases
 - (b) 'harmonic wide bands', structured according to local magnetic field conditions.

Both forms could result from many small size sources. Respective source spatial distribution might be different.

- Challenging question: how to conciliate numerous, micro sources, with well established beams of large aperture ?

Perspectives

Close analysis of ES sources (PEACE, WBD, WHISPER) plus simulation, toward a better understanding of source behavior (stability, power)