



HAL
open science

Cluster observations in the magnetosheath – Part 2: Intensity of the turbulence at electron scales

Catherine Lacombe, A. A. Samsonov, André Mangeney, Milan Maksimovic,
Nicole Cornilleau-Wehrin, C. C. Harvey, J.-M. Bosqued, P. Trávníček

► **To cite this version:**

Catherine Lacombe, A. A. Samsonov, André Mangeney, Milan Maksimovic, Nicole Cornilleau-Wehrin, et al.. Cluster observations in the magnetosheath – Part 2: Intensity of the turbulence at electron scales. *Annales Geophysicae*, 2006, 24 (12), pp.3523-3531. 10.5194/angeo-24-3523-2006 . hal-00153542

HAL Id: hal-00153542

<https://hal.science/hal-00153542>

Submitted on 20 Dec 2015

HAL is a multi-disciplinary open access archive for the deposit and dissemination of scientific research documents, whether they are published or not. The documents may come from teaching and research institutions in France or abroad, or from public or private research centers.

L'archive ouverte pluridisciplinaire **HAL**, est destinée au dépôt et à la diffusion de documents scientifiques de niveau recherche, publiés ou non, émanant des établissements d'enseignement et de recherche français ou étrangers, des laboratoires publics ou privés.

Cluster observations in the magnetosheath – Part 2: Intensity of the turbulence at electron scales

C. Lacombe¹, A. A. Samsonov², A. Mangeney¹, M. Maksimovic¹, N. Cornilleau-Wehrlin³, C. C. Harvey⁴, J.-M. Bosqued⁴, and P. Trávníček⁵

¹LESIA/CNRS, Observatoire de Paris, Meudon, France

²Institute of Physics, St. Petersburg State University, St. Petersburg, Russia

³Centre d'étude des Environnements Terrestre et Planétaire/UVSQ, Vélizy, France

⁴Centre d'Etude Spatiale des Rayonnements/CNRS, Toulouse, France

⁵Institute of Atmospheric Physics, Prague, Czech Republic

Received: 21 April 2006 – Revised: 23 October 2006 – Accepted: 10 November 2006 – Published: 21 December 2006

Abstract. The Cluster STAFF Spectral Analyser measures the magnetic and electric power spectral densities (PSD) δB^2 and δE^2 in the magnetosheath between 8 Hz and 4 kHz, i.e. between about the lower hybrid frequency and 10 times the proton plasma frequency. We study about 23 h of data on four different days. We do not consider the whistler waves and the electrostatic pulses (which are not always observed) but the underlying permanent fluctuations. Paper 1 (Mangeney et al., 2006) shows why the permanent PSD at a given frequency f depends strongly on the angle Θ_{BV} between the magnetic field \mathbf{B} and the flow velocity \mathbf{V} : this is observed for the electromagnetic (e.m.) fluctuations, δB^2 and δE_{em}^2 , below the electron cyclotron frequency f_{ce} , and for the electrostatic (e.s.) fluctuations δE_{es}^2 at and above f_{ce} . This dependence is due to the Doppler shift of fluctuations which have a highly anisotropic distribution of the intensity of the wave vector \mathbf{k} spectrum, and have a power law intensity $\propto k^{-\nu}$ with $\nu \simeq 3$ to 4. In the present paper, we look for parameters, other than Θ_{BV} , which control the intensity of the fluctuations. At $f \simeq 10$ Hz, δB^2 and δE_{em}^2 increase when the solar wind dynamic pressure P_{DYN}^{SW} increases. When P_{DYN}^{SW} increases, the magnetosheath $P_{DYN}^{MS} \propto N V^2$ also increases, so that the local Doppler shift $(\mathbf{k} \cdot \mathbf{V})$ increases for a given \mathbf{k} . If \mathbf{V} increases, a given frequency f will be reached by fluctuations with a smaller k , which are more intense: the variations of δB^2 (10 Hz) with P_{DYN}^{SW} are only due to the Doppler shift in the spacecraft frame. We show that the e.m. spectrum in the plasma frame has an invariant shape $I_{1D} \propto A_{em} (kc/\omega_{pe})^{-\nu}$ related to the electron inertial length c/ω_{pe} : the intensity A_{em} does not depend on P_{DYN} , nor on the electron to proton temperature ratio T_e/T_p , nor on the upstream bow shock angle θ_{BN} . Then, we show results of 3-D MHD numerical simulations of the magnetosheath plasma, which map the

regions where the angle Θ_{BV} is $\simeq 90^\circ$. The e.m. fluctuations are more intense in these magnetosheath regions, in the spacecraft frame where they are observed in the “whistler” range; and the e.s. fluctuations are less intense in these same regions, in the spacecraft frame where they are observed in the “ion acoustic” range. We conclude that the intensity of the permanent fluctuations in the e.m. range only depends on the Doppler shift, so that from day to day and from place to place in the magnetosheath, the \mathbf{k} spectrum in the plasma frame has an invariant shape and a constant intensity. This is observed on scales ranging from $kc/\omega_{pe} \simeq 0.3$ (50 km) to $kc/\omega_{pe} \simeq 30$ (500 m), i.e. at electron scales smaller than the Cluster separation.

Keywords. Magnetospheric physics (Magnetosheath; Plasma waves and instabilities) – Space plasma physics (Turbulence)

1 Introduction

The STAFF Spectral Analyser on Cluster operates between 8 Hz and 4 kHz, i.e. between about the lower hybrid frequency and 10 times the proton plasma frequency f_{pi} in the magnetosheath plasma. As discussed in the companion paper (Mangeney et al., 2006, Paper 1), two types of waves have to be distinguished in this frequency range: waves in the range $8 \text{ Hz} \leq f \leq 300 \text{ Hz}$, the “whistler” range, which are basically electromagnetic (e.m.), and waves in the range $300 \text{ Hz} \leq f \leq 4 \text{ kHz}$, the “ion acoustic” range, which are basically electrostatic (e.s.). In Paper 1, we have shown that, for both types of waves, most of the variations of the power spectral density (PSD) observed at a given frequency f can be explained by the variations of the Doppler shift $(\mathbf{k} \cdot \mathbf{V})$, where \mathbf{k} is the wave vector. In the “whistler” range, we have neglected the coherent whistler waves (which

Correspondence to: C. Lacombe
(Catherine.Lacombe@obspm.fr)

have a right-handed magnetic polarisation and are not always observed) and we have only considered the underlying permanent fluctuations. In this range, the magnetic and electric PSD increase strongly when the angle Θ_{BV} between the local magnetic field \mathbf{B} and the plasma flow velocity \mathbf{V} increases from 0° to 90° . This can be modelled with statistically permanent e.m. fluctuations which have a negligible frequency in the plasma frame and are Doppler shifted up to f ; the intensity of these fluctuations varies like a power law of the wave number $I_{1D} \propto k^{-\nu}$ with $\nu \simeq 3$; the wave vectors of the fluctuations are mostly perpendicular to \mathbf{B} , i.e. with an intensity $I_{3D} \propto |\sin \theta_{kB}|^\mu k^{-\nu-2}$ for $\mu \simeq 100$, in the wave number range $0.3 < kc/\omega_{pe} < 30$. θ_{kB} is the angle between \mathbf{k} and \mathbf{B} . Meanwhile, in the “ion acoustic” range, the e.s. PSD around 1 kHz decreases when the angle Θ_{BV} increases up to 90° : this can be modelled with statistically permanent e.s. fluctuations which have wave vectors mainly parallel to \mathbf{B} , i.e. with a 3-D intensity $I_{3D} \propto |\cos \theta_{kB}|^\mu k^{-\nu-2}$, with $\mu \simeq 100$ and $\nu \simeq 4$, in the wave number range $0.1 < k\lambda_{De} < 1$. These e.s. fluctuations may be ion acoustic modes Doppler shifted up to about 1 kHz. In this e.s. range (see Paper 1) we have not considered the electrostatic pulses: according to Pickett et al. (2005) the time duration and the amplitude of these pulses, observed in the time domain, do not depend on Θ_{BV} .

Note that the above exponent ν refers to the power law index of the 1-D spectrum $I_{1D}(k)$ defined by

$$\delta B^2 = \int dk I_{1D}(k)$$

with

$$I_{1D}(k) = 2\pi Ak^2 \int_0^\pi \sin \theta_{kB} d\theta_{kB} I_{3D}(k, \theta_{kB}).$$

For an isotropic Kolmogorov spectrum $I_{1D} \propto k^{-\nu}$ with $\nu=5/3$, the 3-D spectrum is $I_{3D} \propto k^{-\nu-2}$.

Are there solar wind or magnetosheath parameters, other than Θ_{BV} i.e. the Doppler shift, which contribute to the control of the intensity of the fluctuations in the STAFF-SA frequency range? Indeed, at frequencies $f < 10$ Hz, below the STAFF-SA range, several parameters have been found to have an effect upon the e.m. PSD in the magnetosheath: the solar wind Alfvén Mach number (Fairfield and Ness, 1970), the connection to quasi-parallel bow shocks (Luhmann et al., 1986; Czaykowska et al., 2001), and the magnetosheath proton β_p (Anderson et al., 1994; Czaykowska et al., 2001). According to Rezeau et al. (1992) the level of the Alfvénic magnetic fluctuations close to the magnetopause is higher when the magnetopause moves earthward (compression) and lower when it moves outwards (expansion).

As for the e.m. waves above 10 Hz, Rodriguez (1985) shows that their occurrence and their intensity mainly depend on the position in the magnetosheath: while this “whistler” turbulence is observed more frequently in the inner region of the sunward magnetosheath (a region where compressional

MHD fluctuations have been shown to dominate), the intensity of the 200 Hz whistler mode waves (broadband whistlers and narrowband lion roars) peaks near the magnetopause. For the e.s. waves around 1 kHz, Rodriguez (1979) finds that the wave intensity tends to maximize at the bow shock and to decrease towards the magnetopause and towards the dawn and dusk regions. In the “ion acoustic” range (0.2 to 4 kHz), the intensity of the waves observed in the dayside magnetosheath, just downstream of the bow shock ramp, does not appear to be correlated to the shock Alfvén Mach number, to the angle θ_{BN} between the upstream \mathbf{B} field and the bow shock normal, or to the electron ratio β_e (Onsager et al., 1989). In the distant magnetosheath, on ISEE-3, Coroniti et al. (1994) observed that the e.s. waves, between about 200 Hz and 3 kHz (“ion acoustic” range), are less intense where the angle Θ_{BV} between the local magnetic field \mathbf{B} and the plasma flow velocity \mathbf{V} reaches 90° . Between 8 Hz and 4 kHz, the wave intensity in the magnetosheath seems thus to be only controlled by the position in the magnetosheath and/or by the angle between \mathbf{B} and \mathbf{V} .

We have seen in Paper 1 that the permanent PSD above 10 Hz in the magnetosheath was mainly controlled by Θ_{BV} , i.e. by the Doppler shift. In the present paper, we show that the e.m. and the e.s. PSDs observed by STAFF-SA depend on the solar wind dynamic pressure P_{DYN}^{SW} , but only at a given frequency in the spacecraft frame. At a given scale k^{-1} , normalised to the electron inertial length c/ω_{pe} , the intensity of the e.m. \mathbf{k} spectra in the plasma frame does not depend on P_{DYN}^{SW} (nor on θ_{BN} or β_p , see Sect. 3). As for the e.s. spectra, their intensity does not depend on P_{DYN} (nor on θ_{BN} , β_p or T_e/T_p , Sect. 4), if the frequency f is normalised to the plasma frequency f_{pi} . The e.m. and e.s. turbulence intensities thus strongly depend on the Doppler shift through the angle Θ_{BV} . Numerical 3-D MHD simulations (Sect. 5) allow us to map Θ_{BV} in the magnetosheath, as a function of the angle between the solar wind magnetic field \mathbf{B}_{sw} and \mathbf{X}_{GSE} upstream of the bow shock. These maps of Θ_{BV} in the magnetosheath allow us to predict where the most intense “whistler” waves and the least intense “ion acoustic” waves will be found in the spacecraft frame.

2 Data

Every second, the STAFF-SA experiment (Cornilleau-Wehrin et al., 1997) measures the diagonal terms of the 5×5 spectral matrix, computed with the three components of the magnetic fluctuations $\delta \mathbf{B}$, and two components of the electric fluctuations $\delta \mathbf{E}$ (at 27 logarithmically spaced frequencies, between 8 Hz and 4 kHz). The variance of the fluctuations is nearly isotropic, so that $\delta B_{xx}^2 \simeq \delta B_{yy}^2 \simeq \delta B_{zz}^2$ and $\delta E_{xx}^2 \simeq \delta E_{yy}^2$. We shall use 4-s averages of the total magnetic PSD $\delta B^2 = \delta B_{xx}^2 + \delta B_{yy}^2 + \delta B_{zz}^2$ in nT^2/Hz , and of the electric PSD $\delta E^2 = \delta E_{xx}^2 + \delta E_{yy}^2$ in $(\text{mV/m})^2/\text{Hz}$.

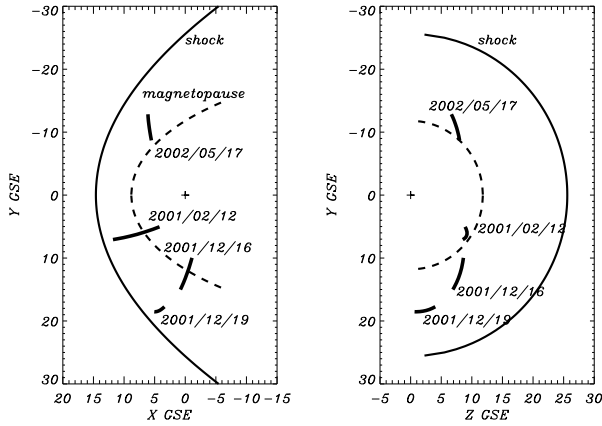


Fig. 1. For the four considered time intervals, projection of the Cluster orbit in the (X_{GSE}, Y_{GSE}) and (Z_{GSE}, Y_{GSE}) planes.

The data of Cluster 1 (Rumba), in the magnetosheath, are analysed during four intervals. Figure 1 displays the position of Cluster in the GSE planes (X, Y) and (Y, Z) for each interval. Also shown are a paraboloidal bow shock model without aberration, $X=14.6[1-(Y^2+Z^2)/25.6^2]$ (Filbert and Kellogg, 1979), and a magnetopause model (dashed line; Sibeck et al., 1991), $Y^2+Z^2=139.2-0.18X^2-14.2X$. The considered intervals are generally far from the bow shock, except the longest interval, on 12 February 2001, which corresponds to a complete crossing of the magnetosheath. Cluster is in the dawn side on 17 May 2002. The plasma properties, proton density, temperature and velocity (Rème et al., 1997) and the electron temperature (Johnstone et al., 1997) are sampled with a time resolution of 4 s. We use 4-s averages of the magnetic field (Balogh et al., 1997).

The date and the duration of the four intervals, lasting from 4 h to 7 h, are given in the caption of Fig. 2, which displays several relations between plasma parameters. The different colours correspond to the four different days. Figure 2a shows the anticorrelations between $\beta_{p\parallel} = 2\mu_0 N_p k_B T_{p\parallel} / B^2$ and $T_{p\perp} / T_{p\parallel} - 1$, which are generally observed in the magnetosheath and which lead to the “bounded anisotropy model” (Denton et al., 1994, and references therein). $T_{p\parallel}$ and $T_{p\perp}$ are the proton temperatures, respectively, parallel and perpendicular to the \mathbf{B} field. $P_{DYN}^{MS} = m_p N_p V^2$ is the local dynamic pressure in the magnetosheath. Figure 2b shows that it is correlated to $\beta_{p\parallel}$ for a given day. Figure 2c shows that when the angle Θ_{BV} increases towards 90° , P_{DYN}^{MS} generally increases for a given day. We shall see in Sect. 5 that this occurs in the magnetosheath flow when the solar wind (upstream) magnetic field and the X_{GSE} axis are quasi-perpendicular. Figure 2d displays an anticorrelation between T_e / T_p and P_{DYN}^{MS} , in the magnetosheath, which will be discussed in Sect. 6.

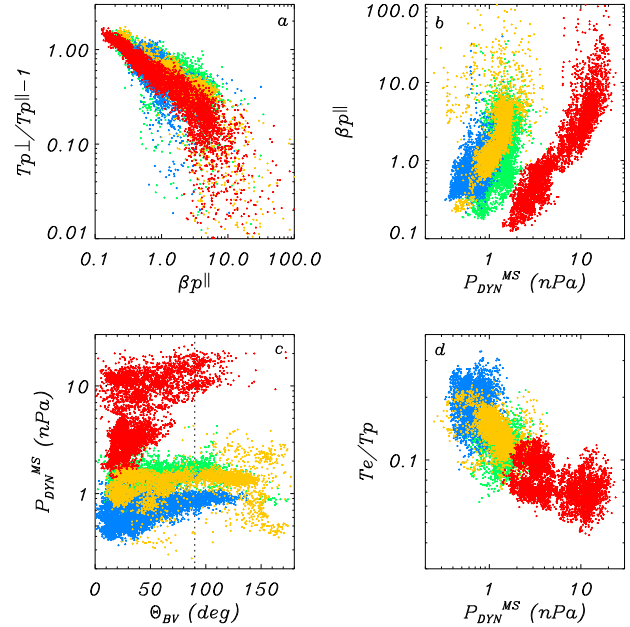


Fig. 2. On 12 February 2001 (00:15 to 07:30 UT, green points), 16 December 2001 (03:15 to 09:00 UT, red points), 19 December 2001 (00:00 to 06:00 UT, blue points), 17 May 2002 (08:00 to 12:15 UT, yellow points), some magnetosheath properties every 4 s: (a) the proton temperature anisotropy as a function of $\beta_{p\parallel}$, (b) $\beta_{p\parallel}$ as a function of $P_{DYN}^{MS} = m_p N_p V^2$, (c) P_{DYN}^{MS} as a function of the angle Θ_{BV} between \mathbf{B} and \mathbf{V} , (d) the electron to proton temperature ratio as a function of P_{DYN}^{MS} .

3 Intensity of the electromagnetic waves (10 to 100 Hz)

3.1 At a given frequency $\simeq 10$ Hz

At the frequency $f=11$ Hz (which is near the lower hybrid frequency), we look for a dependence of δB^2 on two solar wind parameters, the dynamic pressure P_{DYN}^{SW} and the bow shock angle θ_{BN} . The solar wind data are those of ACE, near the Lagrange point L1. For each interval of magnetosheath data, we calculate the average time delay between ACE and Cluster which gives the best correlation between the magnetic field components on ACE and on Cluster. These delays vary between 57 and 74 mn, i.e. about 1 h for the four considered days. We thus know what are the upstream solar wind \mathbf{B} field and P_{DYN}^{SW} at the time of the PSD measurements in the magnetosheath. The shock angle θ_{BN} between the upstream magnetic field and the shock normal is estimated with the assumption that the bow shock has the quoted paraboloidal shape and is located just upstream of the Cluster 1 position. We see in Fig. 3a that δB^2 increases when P_{DYN}^{SW} increases from day to day. There is no regular increase of δB^2 from day to day when the solar wind Mach number M_A increases (not shown): δB^2 is related to P_{DYN}^{SW} , not to M_A which is

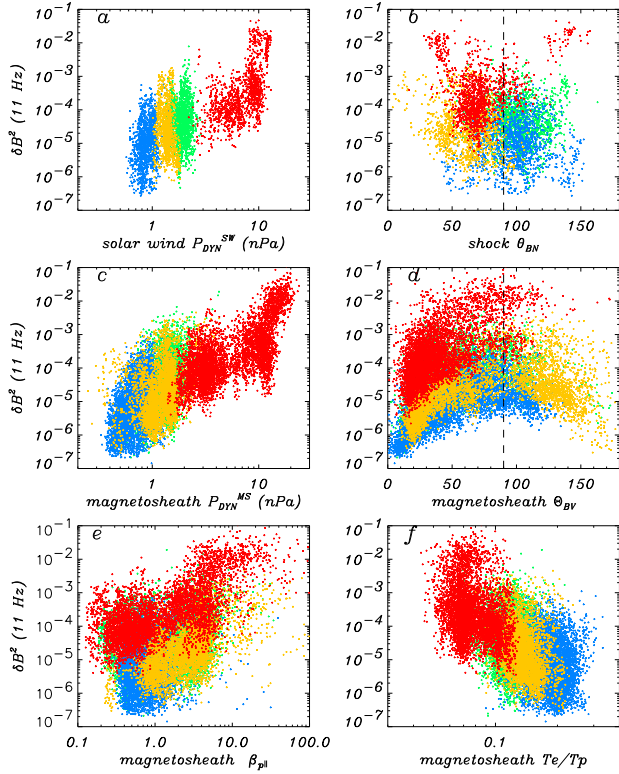


Fig. 3. The power spectral density (PSD) of the magnetic fluctuations at 11 Hz, on the four considered days, as a function of: (a) the solar wind P_{DYN}^{SW} observed every 16 s on ACE, about 1 h earlier, (b) the upstream bow shock angle θ_{BN} every 16 s, (c) the local magnetosheath P_{DYN}^{MS} every 4 s, (d) the local angle Θ_{BV} between \mathbf{B} and \mathbf{V} , (e) the local $\beta_{p\parallel}$, (f) the local ratio T_e/T_p .

proportional to $(P_{DYN}^{SW})^{1/2}/B$. Figure 3b shows that the four intervals were mainly downstream of the quasi-perpendicular shocks; it seems that the waves are more intense for a few (red) points corresponding to θ_{BN} smaller than 45° (quasi-parallel shocks), but this is not confirmed on 19 December 2001 (blue points). We note in Fig. 3c that $\delta B^2(11 \text{ Hz})$ is as well correlated to P_{DYN}^{MS} in the magnetosheath as it is correlated to P_{DYN}^{SW} (Fig. 3a). Indeed, there is a strong correlation between P_{DYN}^{SW} and P_{DYN}^{MS} . We recall that the strong variations of δB^2 on a given day are due to the variation of the angle Θ_{BV} in the magnetosheath (see Fig. 3d, and Paper 1). As the intensity of the waves observed below 10 Hz in the magnetosheath is generally correlated to the local $\beta_{p\parallel}$ (see the Introduction), we look for this correlation at 11 Hz. We see in Fig. 3e that there is a slight relation between $\delta B^2(11 \text{ Hz})$ and $\beta_{p\parallel}$ on a given day, mainly on 16 December 2001 (red points). Finally, Fig. 3f shows how $\delta B^2(11 \text{ Hz})$ decreases when the electron to proton temperature ratio, T_e/T_p , increases; this fact is related to the anticorrelation between P_{DYN}^{MS} and T_e/T_p seen in Fig. 2d.

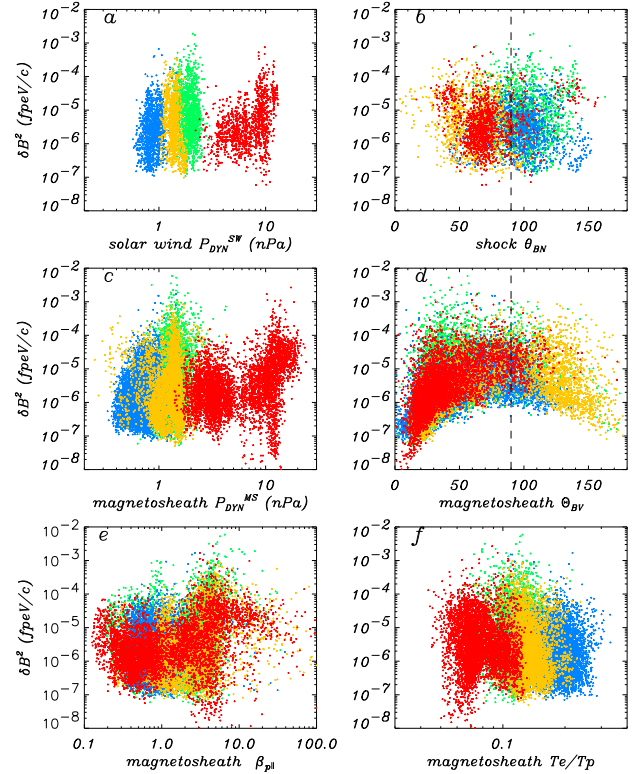


Fig. 4. The PSD $\delta B^2(f)$ interpolated at the time varying frequency $f_{pe}V/c$ on the four considered days, as a function of: (a) the solar wind P_{DYN}^{SW} , (b) the upstream bow shock angle θ_{BN} , (c) the magnetosheath P_{DYN}^{MS} , (d) the angle Θ_{BV} , (e) the magnetosheath $\beta_{p\parallel}$, (f) the ratio T_e/T_p .

3.2 For a given scale $kc/\omega_{pe}=1$

We have shown in Paper 1 that the observed frequencies f of the e.m. waves only result from the Doppler shift of a spatial turbulence frozen in the plasma rest frame, with \mathbf{k} mainly perpendicular to \mathbf{B} in the range $kc/\omega_{pe} \simeq 0.3$ to 30. Let us consider what happens to the scale $k^{-1}=c/\omega_{pe}$ if \mathbf{k} is parallel to \mathbf{V} : its Doppler shift $kV/2\pi$ will be $f_{Dop}=f_{pe}V/c$. As f_{pe} and \mathbf{V} vary on each day and from day to day, the frequency f_{Dop} at which the considered scale is observed will vary like $VN_p^{1/2}$, which itself varies like the square root of the local P_{DYN} . In Fig. 4, we display $\delta B^2(f)$ interpolated at the time dependent frequency $f_{pe}V/c$. Figures 4a, 4c and 4f show that $\delta B^2(f_{pe}V/c)$ does not depend anymore on P_{DYN}^{SW} , on P_{DYN}^{MS} and on T_e/T_p . There is strictly no dependence of the PSD on the shock angle θ_{BN} (Fig. 4b) and on $\beta_{p\parallel}$ (Fig. 4e), even on 16 December 2001 (red points). The only variation is with Θ_{BV} (Fig. 4d). This regular variation, also observed at a given frequency (Fig. 3d), is due to the fact that the intense fluctuations are those with a small k and with \mathbf{k} mostly perpendicular to \mathbf{B} (see Paper 1). Indeed,

a given Doppler shift $f_{Dop}=kV \cos \theta_{kV}/2\pi$ will be reached by a small k (with a large intensity), if $\theta_{kV}=0^\circ$: this happens for $\Theta_{BV}=90^\circ$; and f_{Dop} will be reached by a large k (small intensity) for $\Theta_{BV}=0^\circ$.

Besides c/ω_{pe} , we consider another electron scale, the electron gyroradius r_{ge} : we then have $f_{Dop}=f_{ce}V/v_{the}$ for the scale $k^{-1}=r_{ge}$, if \mathbf{k} is parallel to \mathbf{V} . The scatter plots of $\delta B^2(f_{ce}V/v_{the})$ as a function of P_{DYN}^{MS} or of Θ_{BV} (not shown) are more dispersed than the scatter plots of Figs. 4c and 4d. The scale of the turbulence in the e.m. range is thus c/ω_{pe} , not r_{ge} .

We conclude that the variations of the e.m. PSD δB^2 at a given frequency are mainly due to the variations of the local Doppler shift $\propto VN_p^{1/2}$ for wavelengths normalised to the scale c/ω_{pe} . This implies that the 3-D spectrum $\delta B^2(\mathbf{k}) \propto A_{em}(kc/\omega_{pe})^{-\nu-2} |\sin \theta_{kB}|^\mu$ in the plasma frame is broadly invariant on a given day, and from day to day, i.e. with a value of A_{em} constant when P_{DYN}^{SW} and P_{DYN}^{MS} varies.

4 Intensity of the electrostatic waves (≈ 1 kHz)

We have shown in Paper 1 that the magnetic fluctuations δB^2 for $kc/\omega_{pe} \approx 0.3$ to 30 have wave vectors mainly perpendicular to \mathbf{B} ; the e.m. electric fluctuations δE_{em}^2 , at the same frequencies, have similar properties. For smaller scales, $kc/\omega_{pe} \approx 15$ to 150 ($k\lambda_{De} \approx 0.1$ to 1), the electrostatic fluctuations δE_{es}^2 have \mathbf{k} mainly parallel to \mathbf{B} . To account for the variations of δE^2 with f and Θ_{BV} , we have been led to assume that, at $kc/\omega_{pe} \approx 30$, $\delta E_{es}^2 \approx 300 \delta E_{em}^2$ (Paper 1).

We look for a dependence of δE_{es}^2 on the magnetosheath dynamic pressure P_{DYN}^{MS} , itself correlated to the solar wind P_{DYN}^{SW} . We only consider the data when Θ_{BV} is large (70° to 110°), because the dispersion of δE_{es}^2 at a given f is weaker when Θ_{BV} is large (see Fig. 5e of Paper 1). Figures 5a and 5b display δE^2 at a given frequency 1414 Hz as a function of P_{DYN}^{MS} and of T_e/T_p . The broken black line gives the median values in bins of T_e/T_p with a width equal to 0.02. δE^2 tends to increase when P_{DYN}^{MS} increases from day to day. As P_{DYN}^{MS} is anticorrelated with T_e/T_p (Fig. 2d), $\delta E^2(1414 \text{ Hz})$ decreases when T_e/T_p increases (Fig. 5b). There is no correlation between $\delta E^2(1414 \text{ Hz})$ and the bow shock angle θ_{BN} or the magnetosheath $\beta_{p\parallel}$ (not shown).

Then, we interpolate $\delta E^2(f)$ at a time-dependent frequency, 1.5 times the proton plasma frequency f_{pi} . In Figs. 5c and 5d we note that $\delta E^2(1.5 f_{pi})$ does not depend anymore on P_{DYN}^{MS} and T_e/T_p . It does not depend on $\beta_{p\parallel}$ nor on the shock angle θ_{BN} (not shown). The spectrum of the e.s. fluctuations is thus invariant with respect to an energy input like P_{DYN}^{SW} , if the frequency is normalised to the local plasma frequency f_{pi} .

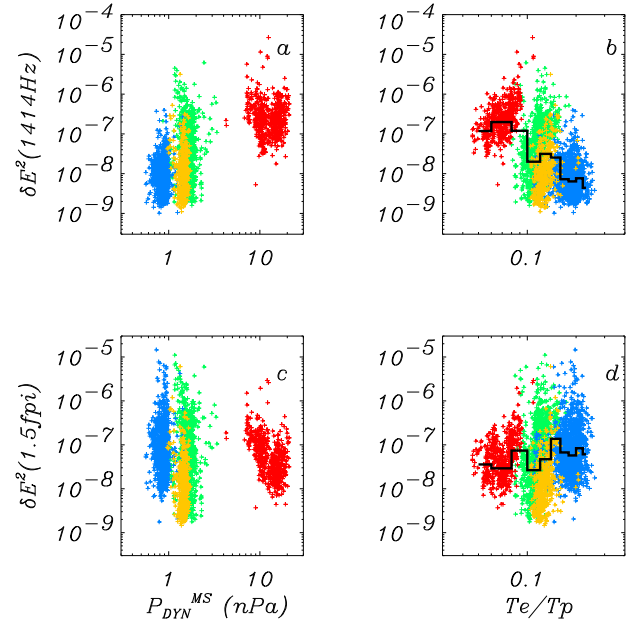


Fig. 5. For the time intervals when Θ_{BV} in the magnetosheath is between 70° and 110° , (a) and (b) the e.s. PSD δE^2 at 1414 Hz as a function of P_{DYN}^{MS} and T_e/T_p , (c) and (d) the e.s. PSD $\delta E^2(f)$, interpolated at the time varying frequency $1.5 f_{pi}$, as a function of P_{DYN}^{MS} and T_e/T_p . The broken black lines give the median values in bins of T_e/T_p with a width 0.02.

5 Wave intensity and position in the magnetosheath

Paper 1, and the Sect. 3 of the present paper led us to conclude that the intensities of the e.m. and e.s. fluctuations at a given frequency in the magnetosheath strongly depend on the local Doppler shift. They will depend on the position in the magnetosheath (as observed by Rodriguez, 1979, 1985), if the Doppler shift itself, i.e. the flow speed \mathbf{V} and the angle Θ_{BV} , depend on the position.

To map the regions of strong Doppler shift, 3-D MHD simulations of the magnetosheath plasma have been performed (see Samsonov and Hubert, 2004; Samsonov, 2006). Figure 6 gives the flow and field parameters calculated in the middle of the magnetosheath (i.e. on a surface at equal distance from the shock and the magnetopause) and projected in the (Y_B, Z_B) plane, which is the (Y_{GSE}, Z_{GSE}) plane rotated around the X_{GSE} axis, so that the direction of Y_B is parallel to the projection of the upstream solar wind magnetic field \mathbf{B}_{sw} in the (Y_{GSE}, Z_{GSE}) plane. This projection is the red arrow in Fig. 6c, with $B_{X_{sw}} \leq 0$, $B_{Y_{sw}} > 0$ and $B_{Z_{sw}} = 0$. The mapped values, density, speed and magnetic field intensity, are normalised to the solar wind values. Figures 6a–d are drawn for a cone angle of the solar wind magnetic field $(\mathbf{B}_{sw}, \mathbf{X}_{GSE}) = 45^\circ$. The density distribution in the magnetosheath is nearly axisymmetric (Fig. 6a). The velocity

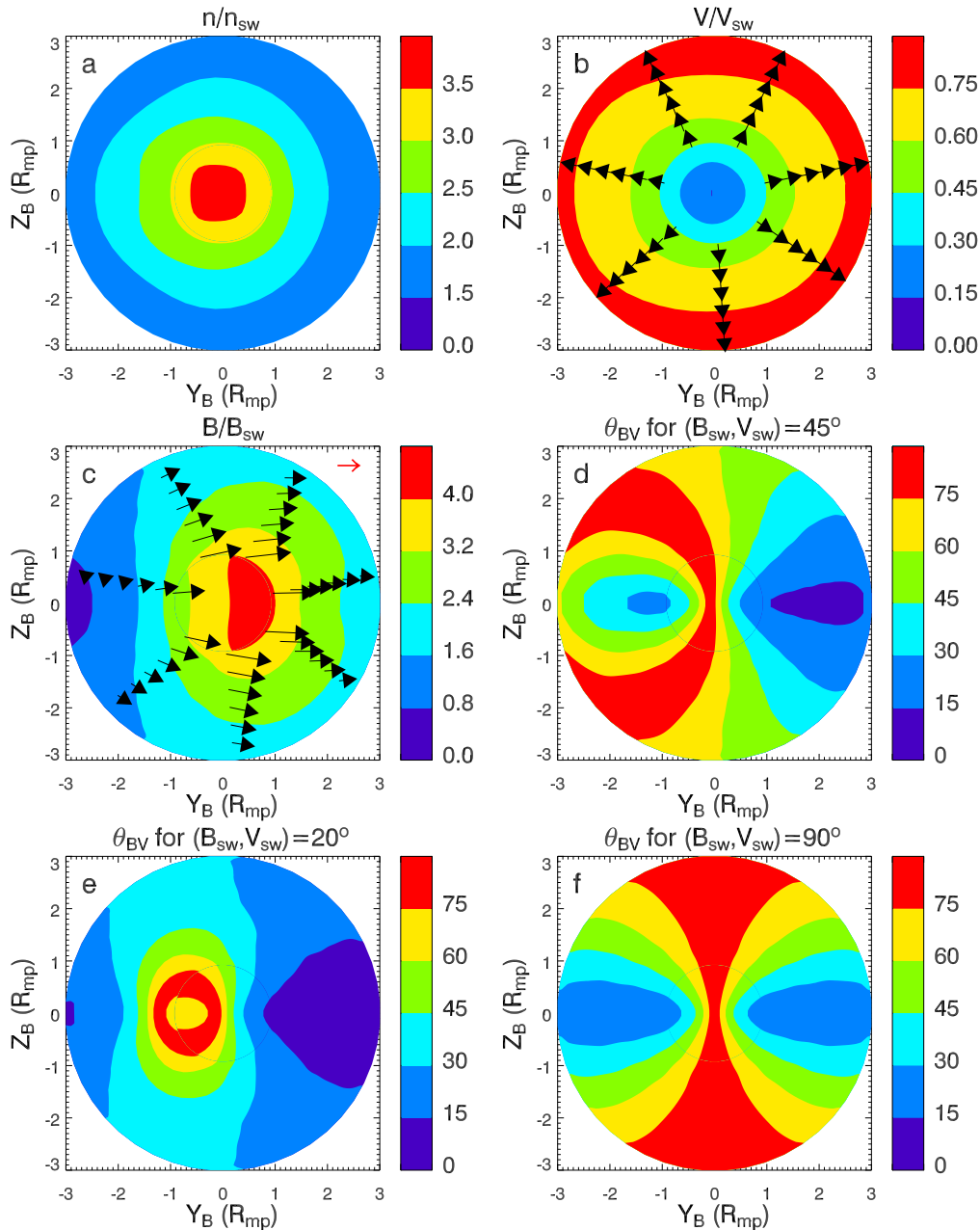


Fig. 6. Results of 3-D MHD simulations. The flow and field values calculated in the middle of the magnetosheath are projected in the (Y_B, Z_B) plane. This plane is the (Y_{GSE}, Z_{GSE}) plane rotated around X_{GSE} , so that the direction Y_B is parallel to the projection of the solar wind magnetic field \mathbf{B}_{sw} in the (Y_{GSE}, Z_{GSE}) plane. R_{mp} is about $11 R_E$. For a solar wind cone angle $(\mathbf{B}_{sw}, \mathbf{X}_{GSE})=45^\circ$: (a) the plasma density normalised to the solar wind density, (b) the velocity normalised to V_{sw} ; the arrows give the direction of \mathbf{V} , (c) the magnetic field normalised to B_{sw} ; the arrows give the direction of \mathbf{B} , (d) the angle Θ_{BV} , (e) Θ_{BV} for the solar wind cone angle $(\mathbf{B}_{sw}, \mathbf{X}_{GSE})=20^\circ$, (f) Θ_{BV} for $(\mathbf{B}_{sw}, \mathbf{X}_{GSE})=90^\circ$.

directions projected in the (Y_B, Z_B) plane (black arrows in Fig. 6b) are not exactly radial, and the largest values of the modulus of \mathbf{V} are found at high latitudes in the (Y_B, Z_B) plane. The directions of the projected \mathbf{B} field (black arrows in Fig. 6c) make small angles with the Y_B direction (i.e. with

the projection of \mathbf{B}_{sw}): the clock angle of the \mathbf{B} field remains nearly constant through the bow shock. The angle Θ_{BV} is displayed in Fig. 6d: the red regions are the regions where Θ_{BV} is large, between 75° and 90° . Except in the subsolar regions $((Y_B^2 + Z_B^2)^{1/2} \leq 0.5 R_{mp})$, where Cluster does not

cruise) the value of Θ_{BV} mainly depends on the latitude in the plane (Y_B, Z_B) . Figure 6e gives the angle Θ_{BV} when the cone angle of the solar wind \mathbf{B} field is $(\mathbf{B}_{sw}, \mathbf{X}_{GSE})=20^\circ$: the largest values $\Theta_{BV} > 75^\circ$ are now at low latitudes, for $Y_B < 0$, downstream of a quasi-parallel bow shock, and the smallest Θ_{BV} are also at low latitudes, downstream of a quasi-perpendicular bow shock ($Y_B > 0$). If the angle $(\mathbf{B}_{sw}, \mathbf{X}_{GSE})$ is 90° (Fig. 6f), Θ_{BV} is larger at high latitudes in the plane (Y_B, Z_B) . A comparison of Fig. 6b with Fig. 6f shows that V tends to be larger when Θ_{BV} is large. This is typical of a magnetosheath observed when $(\mathbf{B}_{sw}, \mathbf{X}_{GSE})$ is larger than 45° , and implies that the dynamic pressure will increase when Θ_{BV} increases (see Fig. 2c).

These simulations show that the angle Θ_{BV} will be larger for large $|Z_B|$ values if the cone angle of the solar wind magnetic field is between 45° and 90° . On 17 May 2002, the observed cone angle $(\mathbf{B}_{sw}, \mathbf{X}_{GSE})$ remains between 45° and 90° , while Cluster remains nearly in the same GSE position. Yet, as the magnetic field rotates, the direction Y_B rotates, and the position of Cluster follows large arcs of circle in the (Y_B, Z_B) plane of Fig. 7. Figure 7a gives the position of Cluster in the (Y_B, Z_B) frame when the e.m. PSD δB^2 at 11 Hz is large, precisely for 10% of the most intense values of δB^2 over 4 h. Similarly, Fig. 7b gives the position of Cluster when the e.s. PSD δE^2 at 1414 Hz is large. We see that the most intense e.m. fluctuations are found at large Z_B , while the most intense e.s. fluctuations are found at small Z_B .

We conclude that the Doppler shift (the angle Θ_{BV} and the flow speed) depends on the position in the magnetosheath for a given direction of the solar wind magnetic field \mathbf{B}_{sw} ; and it depends strongly on the direction of \mathbf{B}_{sw} .

6 Discussion

We have shown in Sect. 3 that the correlation between the magnetosheath dynamic pressure, P_{DYN}^{MS} and δB^2 , at a given frequency (11 Hz) is only due to the Doppler shift, itself proportional to P_{DYN}^{MS} . This correlation between $\delta B^2(11 \text{ Hz})$ and P_{DYN}^{MS} implies some correlations between $\delta B^2(11 \text{ Hz})$ and $\beta_{p\parallel}$, because $\beta_{p\parallel}$ is correlated with P_{DYN}^{MS} , at least for a given day (Fig. 2c; see also Farrugia et al., 2000). Some observations display a correlation between δB^2 below 10 Hz (ULF waves) and $\beta_{p\parallel}$. This correlation in the spacecraft frame is questionable because it could be partly due to the Doppler shift, not to a role played by $\beta_{p\parallel}$.

We have seen in Sect. 3 that there is no significant relation between the e.m. wave intensity and the bow shock angle θ_{BN} , neither at a given frequency (Fig. 3b) nor for a given scale (Fig. 4b). In fact, our magnetosheath intervals generally correspond to quasi-perpendicular shocks, so that we cannot check whether the fluctuations are more intense downstream of quasi-parallel shocks. However, the numerical simulations of Figs. 6d, 6e and 6f show that the value of the angle Θ_{BV} at a given place in the (Y_B, Z_B) plane depends strongly on the

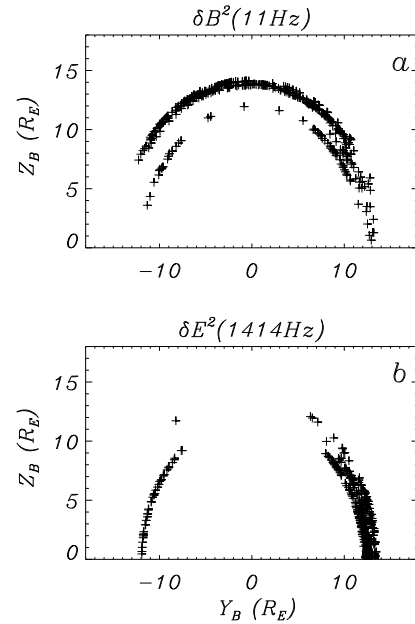


Fig. 7. The plane (Y_B, Z_B) is the (Y_{GSE}, Z_{GSE}) plane rotated around X_{GSE} , so that the direction Y_B is parallel to the projection of the local magnetosheath \mathbf{B} field in the (Y_{GSE}, Z_{GSE}) plane. Wave data on 17 May 2002, 08:00 to 12:15 UT: (a) the position of Cluster in the (Y_B, Z_B) plane for 10% of the most intense PSD δB^2 at 11 Hz (electromagnetic fluctuations), (b) the position of Cluster in the (Y_B, Z_B) plane for 10% of the most intense PSD δE^2 at 1414 Hz (electrostatic fluctuations).

cone angle $(\mathbf{B}_{sw}, \mathbf{X}_{GSE})$, and thus on the bow shock angle θ_{BN} . Thus, a possible dependence of δB^2 on θ_{BN} could be due to the dependence on the angle Θ_{BV} which is simply on the Doppler shift for anisotropic \mathbf{k} spectra.

We mentioned in Sect. 2 that there is an anticorrelation between T_e/T_p and P_{DYN}^{MS} in the magnetosheath for a given day and from day to day (Fig. 2d): for the four days (21 000 points) the correlation coefficient between P_{DYN}^{MS} and T_e/T_p is -0.82 (the correlation is 0.77 between P_{DYN}^{MS} and T_p , and -0.66 between P_{DYN}^{MS} and T_e). In the solar wind, it is well known that T_p is larger than T_e in the high-speed wind, and T_e larger than T_p in the low-speed wind. There is a global anticorrelation between T_e/T_p and V_{sw} (see Mangeney et al., 1999). This anticorrelation upstream of the bow shock will probably also be observed downstream of the bow shock. Indeed, a subcritical shock tends to heat the electrons, while a supercritical shock, with a higher Mach number (i.e. a higher flow speed), tends to heat the protons more than the electrons. The shock will strengthen the anticorrelation between T_e/T_p and V , and strengthen the anticorrelation between T_e/T_p and P_{DYN}^{MS} in the magnetosheath. We thus suggest that this latter anticorrelation comes from a solar wind property amplified by the shock heating.

7 Conclusions

In this paper, we have not considered the fluctuations like the e.m. whistler or the e.s. solitary waves which are intermittently observed in the magnetosheath, but only the underlying permanent fluctuations, between about the nominal lower hybrid frequency and 10 times the nominal proton plasma frequency.

In the magnetosheath, the permanent electromagnetic power spectral density, observed at a given frequency in the spacecraft frame, increases when the solar wind and the magnetosheath dynamic pressure P_{DYN}^{SW} and P_{DYN}^{MS} increase. This correlation is a consequence of the Doppler shift, and disappears if we consider the fluctuations at a given scale ($\propto k^{-1}$), not at a given frequency. Indeed, we find that the scale of the electromagnetic fluctuations is related to the electron inertial length c/ω_{pe} : the e.m. PSD has a k spectral intensity $I_{1D} \propto (kc/\omega_{pe})^{-\nu}$ with $\nu \simeq 3$ to 4, for scales ranging from $kc/\omega_{pe} \simeq 0.3$ to 30. The directions of the wave vectors \mathbf{k} are mostly perpendicular to the \mathbf{B} field (see Paper 1), so that the e.m. 3-D \mathbf{k} spectrum (assumed axisymmetric with respect to \mathbf{B}) varies like $A_{em}(kc/\omega_{pe})^{-\nu-2} |\sin \theta_{kB}|^\mu$ with $\mu \simeq 100$. We find that A_{em} is invariant, it does not depend on P_{DYN}^{SW} or P_{DYN}^{MS} , nor on the magnetosheath $\beta_{p\parallel}$. A_{em} does not depend anymore on the upstream bow shock angle θ_{BN} (but our observations correspond to a limited range of θ_{BN} , downstream of oblique or quasi-perpendicular bow shocks).

The electrostatic permanent fluctuations are probably Doppler shifted ion acoustic waves for scales ranging from $k\lambda_{De} \simeq 0.1$ to 1. The directions of \mathbf{k} are mostly parallel to the \mathbf{B} field (see Paper 1).

A consequence of the strong anisotropies of the e.m. and e.s. \mathbf{k} spectra is that the e.m. fluctuations are more intense and the e.s. fluctuations less intense, at a given frequency in the spacecraft frame, when the local angle Θ_{BV} between the flow velocity and the \mathbf{B} field is close to 90° . 3-D MHD simulations of the flow in the magnetosheath allowed us to map the regions where Θ_{BV} reaches 90° . These maps depend strongly on the cone angle ($\mathbf{B}_{sw}, \mathbf{X}_{GSE}$) of the solar wind magnetic field. For ($\mathbf{B}_{sw}, \mathbf{X}_{GSE}$) larger than 45° , the angle Θ_{BV} reaches 90° in regions with a high latitude with respect to the ($\mathbf{X}_{GSE}, \mathbf{B}$) plane; \mathbf{B} is the direction of the magnetosheath magnetic field, which remains in a plane nearly parallel to the solar wind ($\mathbf{X}_{GSE}, \mathbf{B}_{sw}$) plane. Then, the e.m. PSD will be more intense at high latitudes, and the e.s. PSD more intense at low latitudes with respect to the ($\mathbf{X}_{GSE}, \mathbf{B}$) plane. For a cone angle of the solar wind magnetic field smaller than 45° , the angle Θ_{BV} reaches 90° downstream of the quasi-parallel bow shock, at low latitudes with respect to the ($\mathbf{X}_{GSE}, \mathbf{B}$) plane: the e.m. PSD will be more intense there, and the e.s. PSD less intense.

We conclude that the intensity (in the spacecraft frame) of the e.m. and e.s. fluctuations in the magnetosheath strongly depend on the Doppler effect. This is observed on scales ranging from $kc/\omega_{pe} \simeq 0.3$ (50 km) to $k\lambda_{De} \simeq 1$ (30 m), i.e.

at electron scales, smaller than the Cluster separation. The Doppler shift is related to the dynamic pressure P_{DYN} and to the angle Θ_{BV} ; the angle Θ_{BV} is itself related to the shock angle θ_{BN} and to the position in the magnetosheath. Thus, all the parameters (P_{DYN} , θ_{BN} , position in the magnetosheath) which have been shown to influence the wave intensity, from the ULF range to the “whistler” and “ion acoustic” ranges, may partly be manifestations of the Doppler effect.

Acknowledgements. We are very grateful to the team of the Cluster Magnetic field investigation (PIs A. Balogh and E. Lucek). We thank A. Fazakerley for the use of the Peace data. We thank the ACE MAG and SWEPAM instrument teams and the ACE Science Center for providing the ACE data. It is a pleasure to thank Jolene Pickett for useful discussions, and O. Santolik for the program PRASSADCO. We thank the three referees for useful comments.

Topical Editor I. A. Daglis thanks three referees for their help in evaluating this paper.

References

- Anderson, B. J., Fuselier, S. A., Gary, S. P., and Denton, R. E.: Magnetic spectral signatures in the Earth’s magnetosheath and plasma depletion layer, *J. Geophys. Res.*, 99, 5877–5891, 1994.
- Balogh, A., Dunlop, M. W., Cowley, S. W. H., Southwood, D. J., Thomlinson, J. G., Glassmeier, K. H., Musmann, G., Lühr, H., Buchert, S., Acuña, M. H., Fairfield, D. H., Slavin, J. A., Riedler, W., Schwingenschuh, K., Kivelson, M. G., and the Cluster magnetometer team: The Cluster Magnetic Field Investigation, *Space Science Reviews*, 79, 65–92, 1997.
- Cornilleau-Wehrin, N., Chauveau, P., Louis, S., Meyer, A., Nappa, J. M., Perraut, S., Rezeau, L., Robert, P., Roux, A., de Villedary, C., de Conchy, Y., Friel, L., Harvey, C. C., Hubert, D., Lacombe, C., Manning, R., Wouters, F., Lefevre, F., Parrot, M., Pinçon, J.-L., Poirier, B., Kofman, W., Louarn, P., and the Staff investigator team: The Cluster Spatio-temporal Analysis of Field Fluctuations (Staff) Experiment, *Space Science Reviews*, 79, 107–136, 1997.
- Coroniti, F. V., Greenstadt, E. W., Moses, S. L., Tsurutani, B. T., and Smith, E. J.: On the absence of plasma wave emissions and the magnetic field orientation in the distant magnetosheath, *Geophys. Res. Lett.*, 21, 2761–2764, 1994.
- Czaykowska, A., Bauer, T. M., Treumann, R. A., and Baumjohann, W.: Magnetic field fluctuations across the Earth’s bow shock, *Ann. Geophys.*, 19, 275–287, 2001, <http://www.ann-geophys.net/19/275/2001/>.
- Denton, R. E., Anderson, B. J., Gary, S. P., and Fuselier, S. A.: Bounded anisotropy fluid model for ion temperatures, *J. Geophys. Res.*, 99, 11 225–11 241, 1994.
- Fairfield, D. H. and Ness, N. F.: Magnetic field fluctuations in the Earth’s magnetosheath, *J. Geophys. Res.*, 75, 6050–6060, 1970.
- Farrugia, C. J., Erkaev, N. V., and Biernat, H. K.: On the effect of solar wind dynamic pressure on the anisotropic terrestrial magnetosheath, *J. Geophys. Res.*, 105, 115–127, 2000.
- Filbert, P. C. and Kellogg, P. J.: Electrostatic noise at the plasma frequency beyond the Earth’s bow shock, *J. Geophys. Res.*, 84, 1369–1381, 1979.

- Johnstone, A. D., Alsop, C., Burge, S., Carter, P. J., Coates, A. J., Coker, A. J., Fazakerley, A. N., Grande, M., Gowen, R. A., Gurgiolo, C., Hancock, B. K., Narheim, B., Preece, A., Sheather, P. H., Winningham, J. D., and Woodliffe, R. D.: Peace: a Plasma Electron and Current Experiment, *Space Science Reviews*, 79, 351–398, 1997.
- Luhmann, J. G., Russell, C. T., and Elphic, R.C.: Spatial distribution of magnetic field fluctuations in the dayside magnetosheath, *J. Geophys. Res.*, 91, 1711–1715, 1986.
- Mangeney, A., Salem, C., Lacombe, C., Bougeret, J.-L., Perche, C., Manning, R., Kellogg, P. J., Goetz, K., Monson, S. J., and Bosqued, J.-M.: WIND observations of coherent electrostatic waves in the solar wind, *Ann. Geophys.*, 17, 307–320, 1999, <http://www.ann-geophys.net/17/307/1999/>.
- Mangeney, A., Lacombe, C., Maksimovic, M., Samsonov, A. A., Cornilleau-Wehrlin, N., Harvey, C. C., Bosqued, J.-M., and Trávníček, P.: Cluster observations in the magnetosheath – Part 1: Anisotropies of the wave vector distribution of the turbulence at electron scales, *Ann. Geophys.*, 24, 3507–3521, 2006, <http://www.ann-geophys.net/24/3507/2006/>.
- Onsager, T. G., Holzworth, R. H., Koons, H. C., Bauer, O. H., Gurnett, D. A., Anderson, R. R., Lühr, H., and Carlson, C. W.: High-frequency electrostatic waves near the Earth's bow shock, *J. Geophys. Res.*, 94, 13 397–13 408, 1989.
- Pickett, J. S., Chen, L.-J., Kahler, S. W., Santolik, O., Goldstein, M. L., Lavraud, B., Décréau, P. M. E., Kessel, R., Lucek, E., Lakhina, G. S., Tsurutani, B. T., Gurnett, D. A., Cornilleau-Wehrlin, N., Fazakerley, A., Rème, H., and Balogh, A.: On the generation of solitary waves observed by Cluster in the near-Earth magnetosheath, *Nonlin. Processes Geophys.*, 12, 181–193, 2005, <http://www.nonlin-processes-geophys.net/12/181/2005/>.
- Rème, H., Bosqued, J.-M., Sauvaud, J. A., Cros, A., Dandouras, J., Aoustin, C., Bouyssou, J., Camus, T., Cuvilo, J., Martz, C., Médale, J. L., Perrier, H., Romefort, D., Rouzaud, J., d'Uston, C., Möbius, E., Crocker, K., Granoff, M., Kistler, L. M., Popecki, M., Hovestadt, D., Klecker, B., Paschmann, G., Scholer, M., Carlson, C. W., Curtis, D. W., Lin, R. P., McFadden, J. P., Formisano, V., Amata, E., Bavassano-Cattaneo, M. B., Baldetti, P., Belluci, G., Bruno, R., Chioncho, G., Di Lellis, A., Shelley, E. G., Ghielmetti, A. G., Lennartsson, W., Korth, A., Rosenbauer, H., Lundin, R., Olsen, S., Parks, G. K., McCarthy, M., and Bal-siger, H.: The Cluster Ion Spectrometry (CIS) Experiment, *Space Science Reviews*, 79, 303–350, 1997.
- Rezeau, L., Roux, A., and Russell, C. T.: Can ULF fluctuations observed at the magnetopause play a role in anomalous diffusion?, *Proceedings of the 26th ESLAB Symposium*, Killarney, 127–131, 1992.
- Rodriguez, P.: Magnetosheath electrostatic turbulence, *J. Geophys. Res.*, 84, 917–930, 1979.
- Rodriguez, P.: Magnetosheath whistler turbulence, *J. Geophys. Res.*, 90, 6337–6342, 1985.
- Samsonov, A. A.: Numerical modelling of the Earth's magnetosheath for different IMF orientations, *Advances in Space Research*, 38(8), 1652–1656, doi:10.1016/j.asr.2005.06.009, 2006.
- Samsonov, A. A. and Hubert, D.: The steady-state slow shock inside the Earth's magnetosheath: to be or not to be? Part 2, Numerical modeling, *J. Geophys. Res.*, 109, A01218, doi:10.1029/2003JA01006, 2004.
- Sibeck, D. G., Lopez, R. E., and Roelof, E. C.: Solar wind control of the magnetopause shape, location and motion, *J. Geophys. Res.*, 96, 5489–5495, 1991.