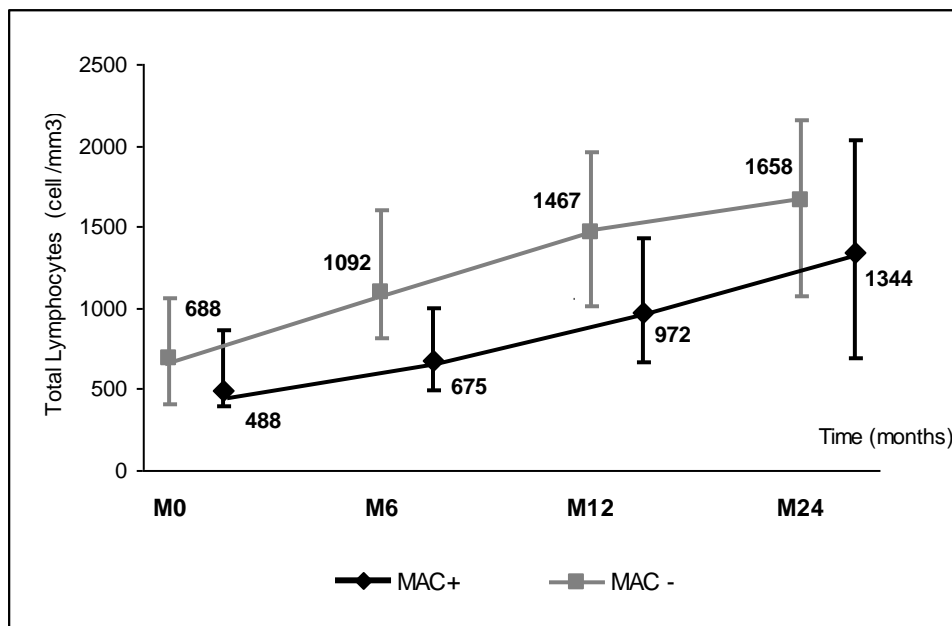


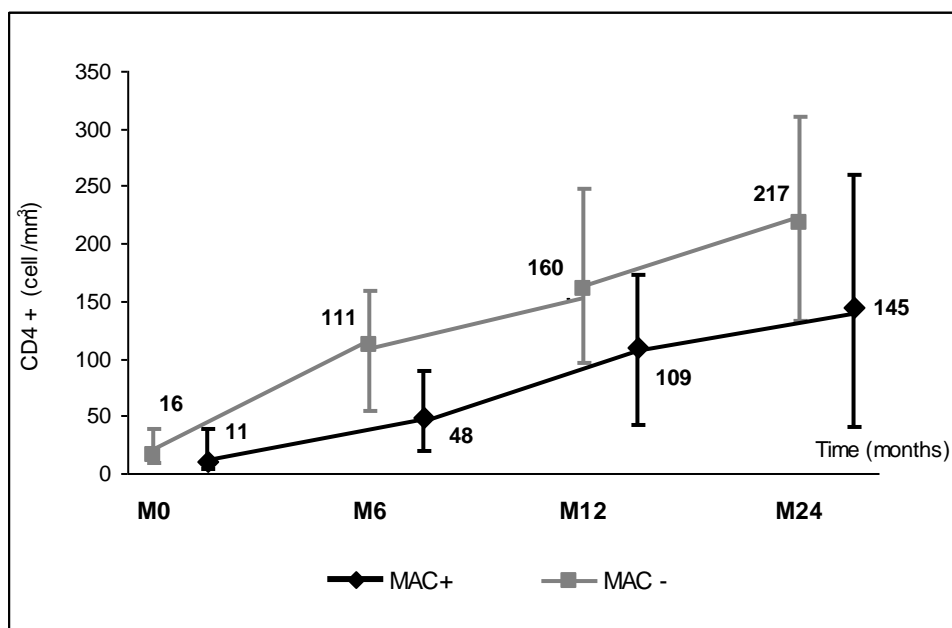
Figure 1. Median marker values at M0 (baseline), M6 (6 months later), M12 and M24 according to exposure group: patients with *Mycobacterium avium* complex (MAC+) or without (MAC-). Tables show number of available subjects at each time point, interquartile range (Q1-Q3) and p value for statistical difference of marker level between MAC+ and MAC- groups. ANRS Co3 Aquitaine Cohort.

a. Total lymphocytes count /mm³



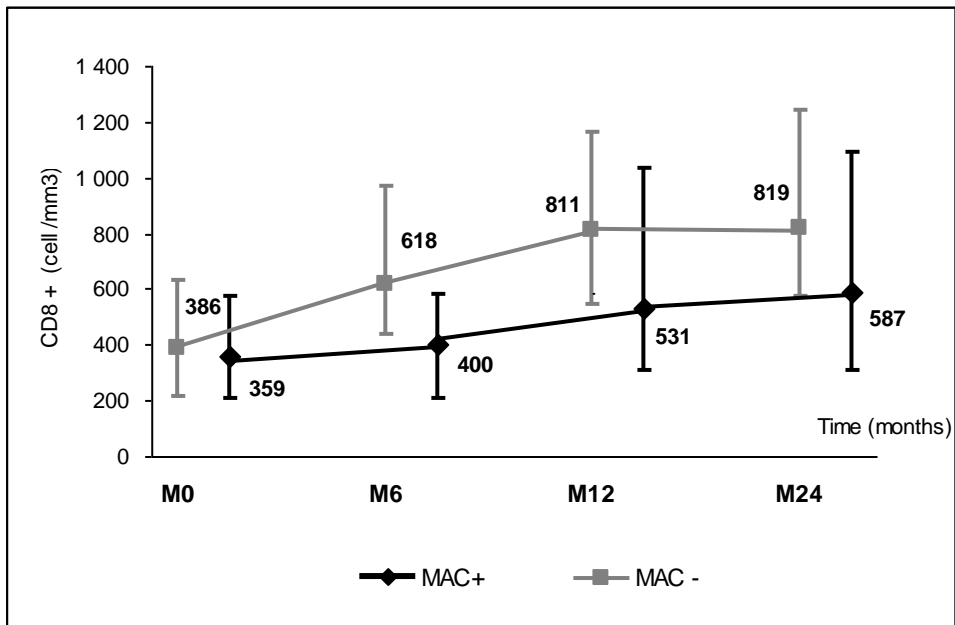
	M0		M6		M12		M24	
	N	Med [Q1-Q3]	N	Med [Q1-Q3]	N	Med [Q1-Q3]	N	Med [Q1-Q3]
MAC-	138	688 [410-1065]	108	1092 [812-1595]	98	1467 [1010-1957]	88	1658 [1066-2152]
MAC+	47	488 [396-858]	42	675 [489-1000]	35	972 [660-1434]	30	1344 [684-2029]
P		0.09		<10 ⁻⁴		0.004		0.05

b. CD4+ T lymphocytes count / mm³



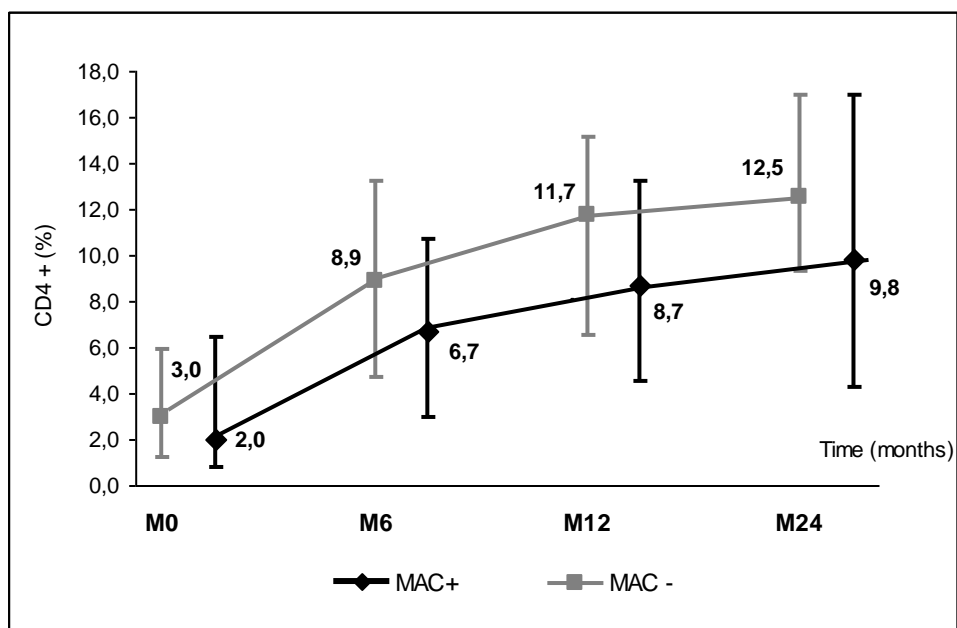
	M0		M6		M12		M24	
	N Med [Q1-Q3]		N Med [Q1-Q3]		N Med [Q1-Q3]		N Med [Q1-Q3]	
MAC-	145	16 [8-39]	115	111 [54-158]	105	160 [96-247]	95	217 [132-310]
MAC+	51	11 [3-38]	43	48 [19-89]	36	109 [41-172]	31	145 [40-260]
p		0.15		<10 ⁻⁴		0.001		0.02

c. CD8+ T lymphocytes count /mm³



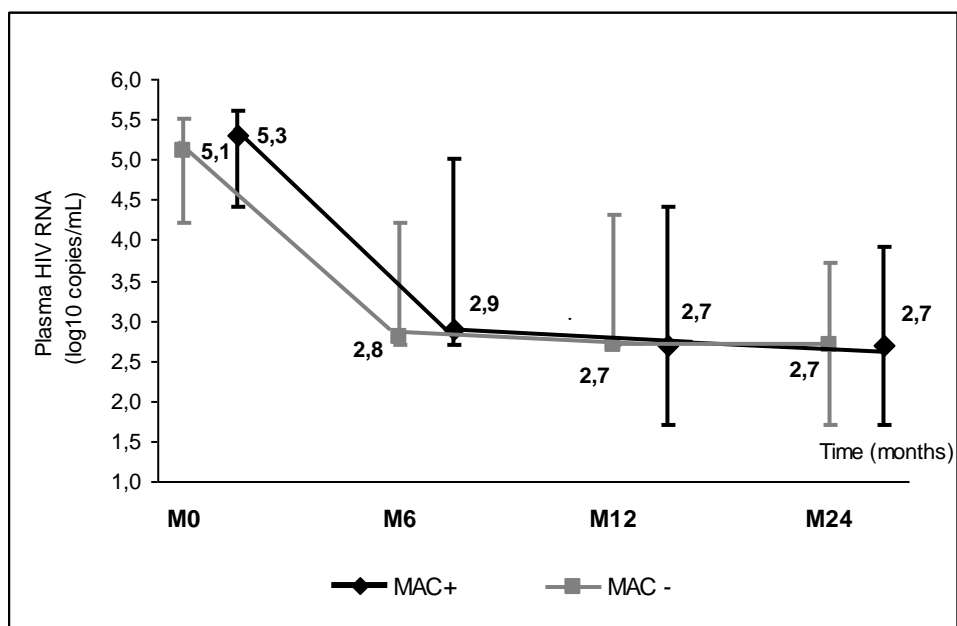
	M0		M6		M12		M24	
	N	Med [Q1-Q3]	N	Med [Q1-Q3]	N	Med [Q1-Q3]	N	Med [Q1-Q3]
MAC-	145	386 [215-634]	113	618 [437-972]	103	811 [549-1165]	94	819 [571-1241]
MAC+	51	359 [206-576]	42	400 [208-579]	35	531 [321-939]	31	587 [311-1091]
p		0.39		<10 ⁻⁴		0.005		0.02

d. CD4+ T lymphocytes percentage



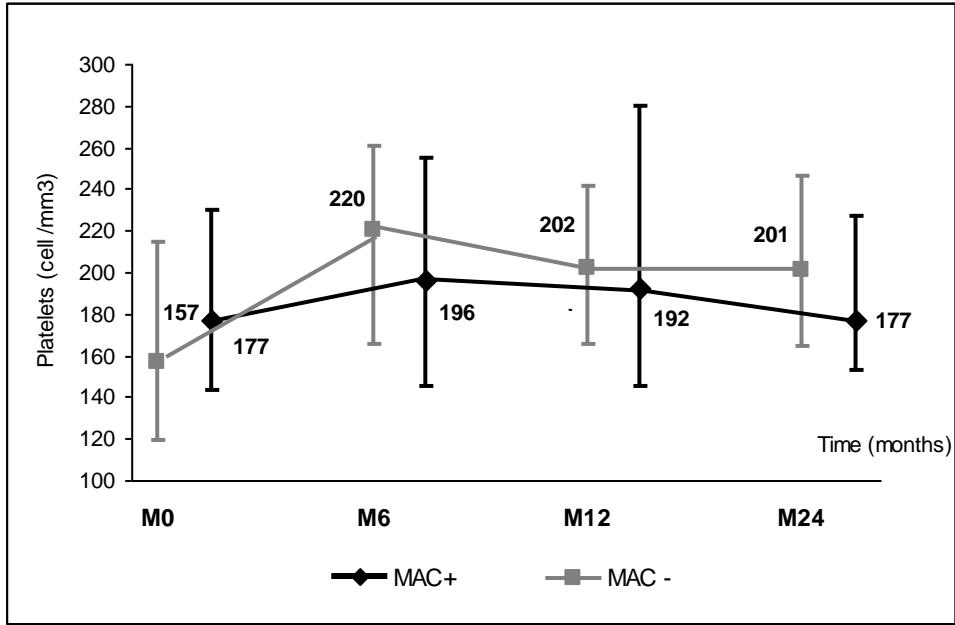
	M0		M6		M12		M24	
	N	Med [Q1-Q3]	N	Med [Q1-Q3]	N	Med [Q1-Q3]	N	Med [Q1-Q3]
MAC-	138	3.0 [1.2-5.9]	108	8.9 [4.7-13.2]	98	11.7 [6.5-15.1]	88	12.5 [9.3-17.0]
MAC+	47	2.0 [0.8-6.4]	42	6.7 [3.0-10.7]	35	8.7 [4.5-13.2]	30	9.8 [4.3-17.0]
p		0.19		0.13		0.11		0.10

e. Plasma HIV RNA (log10 copies/mL)



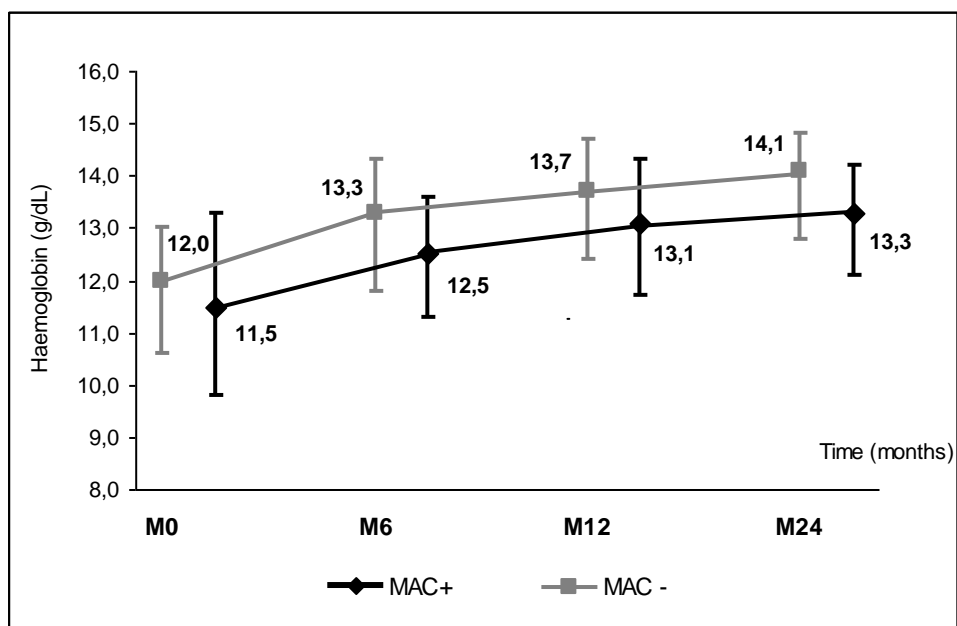
	M0		M6		M12		M24	
	N	Med [Q1-Q3]	N	Med [Q1-Q3]	N	Med [Q1-Q3]	N	Med [Q1-Q3]
MAC-	103	5.1 [4.2-5.5]	107	2.8 [2.7-4.2]	100	2.7 [2.7-4.3]	91	2.7 [1.7-3.7]
MAC+	39	5.3 [4.4-5.6]	41	2.9 [2.7-5.0]	32	2.7 [1.7-4.4]	30	2.7 [1.7-3.9]
P		0.22		0.28		0.77		0.97

f. Platelets /mm³



	M0		M6		M12		M24	
	N	Med [Q1-Q3]	N	Med [Q1-Q3]	N	Med [Q1-Q3]	N	Med [Q1-Q3]
MAC-	139	157 [119-214]	112	220 [165-261]	102	202 [165-241]	94	201 [164-246]
MAC+	50	177 [143-230]	43	196 [145-255]	35	192 [145-280]	29	177 [153-227]
P		0.09		0.34		0.77		0.29

g. Haemoglobin g/dL



	M0		M6		M12		M24	
	N	Med [Q1-Q3]	N	Med [Q1-Q3]	N	Med [Q1-Q3]	N	Med [Q1-Q3]
MAC-	143	12.0 [10.6-13.0]	112	13.3 [11.8-14.3]	104	13.7 [12.4-14.7]	94	14.1 [12.8-14.8]
MAC+	51	11.5 [9.8-13.3]	43	12.5 [11.3-13.6]	36	13.1 [11.7-14.3]	30	13.3 [12.1-14.2]
p		0.23		0.09		0.05		0.11