



HAL
open science

Methionine catabolism in Arabidopsis cells is initiated by a gamma-cleavage process and leads to S-methylcysteine and isoleucine synthesis

Fabrice Rébeillé, Samuel Jabrin, Richard Bligny, Karen Loizeau, Bernadette Gambonnet, Valérie van Wilder, Roland Douce, Stéphane Ravel

► **To cite this version:**

Fabrice Rébeillé, Samuel Jabrin, Richard Bligny, Karen Loizeau, Bernadette Gambonnet, et al.. Methionine catabolism in Arabidopsis cells is initiated by a gamma-cleavage process and leads to S-methylcysteine and isoleucine synthesis. *Proceedings of the National Academy of Sciences of the United States of America*, 2006, 103 (42), pp.15687-92. <10.1073/pnas.0606195103>. <hal-00115944>

HAL Id: hal-00115944

<https://hal.science/hal-00115944v1>

Submitted on 24 Nov 2006

HAL is a multi-disciplinary open access archive for the deposit and dissemination of scientific research documents, whether they are published or not. The documents may come from teaching and research institutions in France or abroad, or from public or private research centers.

L'archive ouverte pluridisciplinaire **HAL**, est destinée au dépôt et à la diffusion de documents scientifiques de niveau recherche, publiés ou non, émanant des établissements d'enseignement et de recherche français ou étrangers, des laboratoires publics ou privés.



HAL Authorization

*This manuscript has been published in Proceedings of the National Academy of Sciences – USA
(2006) 103: 15687-15692 - Doi: 10.1073/pnas.0606195103*

Biological Sciences: Plant Biology

Methionine catabolism in *Arabidopsis* cells is initiated by a γ -cleavage process and leads to S-methylcysteine and isoleucine syntheses

Rébeillé Fabrice, Jabrin Samuel, Bligny Richard, Loizeau Karen, Gambonnet Bernadette, Van Wilder Valérie, Douce Roland and Ravanel Stéphane*

Laboratoire de Physiologie Cellulaire Végétale, UMR5168 CNRS-CEA-INRA-Université Joseph Fourier Grenoble I, Département Réponse et Dynamique Cellulaires, CEA-Grenoble, 17 rue des Martyrs, F-38054 Grenoble Cedex 9, France.

*Corresponding author: Stéphane Ravanel - Laboratoire de Physiologie Cellulaire Végétale, Département Réponse et Dynamique Cellulaires, CEA-Grenoble, 17 rue des Martyrs, F-38054 Grenoble Cedex 9. Tel.: 33-438-78-33-83; Fax: 33-438-78-50-91; E-mail: sravanel@cea.fr

Manuscript information: 18 pages; 6 figures

Word and character counts: abstract, 248 words; total number of characters, 46595

Abbreviations:

α -ketobutyrate, α KB; AdoHcy, S-adenosyl homocysteine; AdoMet, S-adenosyl methionine; Cys, cysteine; Ile, isoleucine; Met, methionine; MGL, methionine- γ -lyase; NMR, nuclear magnetic resonance; Ser, serine; SMC, S-methylcysteine; SMM, S-methylmethionine.

SUMMARY

Despite recent progress in elucidating the regulation of methionine (Met) synthesis, little is known about the catabolism of this amino acid in plants. We present here several lines of evidence indicating that the cleavage of Met catalyzed by Met γ -lyase is the first step in this process. First, we cloned an *Arabidopsis* cDNA coding a functional Met γ -lyase (AtMGL), a cytosolic enzyme catalyzing the conversion of Met into methanethiol, α -ketobutyrate (α KB) and ammonia. AtMGL is present in all the *Arabidopsis* organs and tissues analyzed, except in quiescent dry mature seeds, thus suggesting that AtMGL is involved in the regulation of Met homeostasis in various situations. Also, we demonstrated that the expression of AtMGL was induced in *Arabidopsis* cells in response to high Met levels, probably to by-pass the elevated K_m of the enzyme for Met. Second, [^{13}C]-NMR profiling of *Arabidopsis* cells fed with [^{13}C]-Met allowed us to identify labelled *S*-adenosylmethionine, *S*-methylmethionine, *S*-methylcysteine (SMC) and isoleucine (Ile). The unexpected production of SMC and Ile was directly associated to the function of MGL. Indeed, we showed that part of the methanethiol produced during Met cleavage could react with an activated form of serine to produce SMC. The second product of Met cleavage, α KB, entered the pathway of Ile synthesis in plastids. Together, these data indicate that Met catabolism in *Arabidopsis* cells is initiated by a γ -cleavage process and can result in the formation of the essential amino acid Ile and a potential storage form for sulfide or methyl groups, SMC.

INTRODUCTION

The sulfur-containing amino acid methionine (Met) is an essential metabolite in all living organisms (1). Besides its role as protein constituent, Met is the precursor of *S*-adenosylmethionine (AdoMet) which is the major methyl-group donor in transmethylation reactions and an intermediate in the biosynthesis of biotin, polyamines and the phytohormone ethylene. Met is synthesized *de novo* by plants, fungi and microbes. It is the only sulfur-containing amino acid that is essential for human and monogastric livestock. In these organisms, Met is metabolized through the reverse transsulfuration pathway where the γ -cleavage of the cystathionine intermediate, a reaction that does not exist in plants, allows synthesis of cysteine (Cys) (2). Therefore, Met must be supplied from the diet and, since it is the most limiting essential amino acid in legume seeds, metabolic engineering strategies have been developed to increase the carbon flux into free Met as well as the incorporation of this amino acid into proteins (3).

In higher plants, the neo-synthesized Met molecule originates from three convergent pathways with the sulfur atom deriving from Cys, the nitrogen/carbon backbone from aspartate, and the methyl moiety from the β -carbon of serine via the pool of folates (1). *De novo* Met synthesis consists of three consecutive reactions localized in plastids (4) and catalyzed by cystathionine γ -synthase, cystathionine β -lyase, and methionine synthase. Several recent studies have indicated that Met synthesis and accumulation are subject to complex regulatory controls in which cystathionine γ -synthase plays a crucial role (5-7).

Studies of metabolic fates of Met using the aquatic plant *Lemna paucicostata* indicated that the synthesis and turnover of AdoMet accounts for ~80% of Met metabolism whereas the synthesis of proteins drives ~20% of Met (for a review, see (8)). More than 90% of AdoMet is then used for transmethylation, leading to nucleic acid, protein, lipid and other metabolites modifications. The resulting homocysteinyl moiety is recycled back to Met and AdoMet by a set of cytosolic reactions designated as the activated methyl cycle. The use of AdoMet for the synthesis of polyamines and, in some plant tissues, ethylene is also accompanied by recycling of the methylthio moiety and regeneration of Met. The last known metabolic fate of Met is unique to plants and consists in the production of *S*-methylmethionine (SMM), a compound resulting from the AdoMet-dependent methylation of Met. SMM can then donate a methyl group to homocysteine (Hcy) through the reaction catalyzed by Hcy *S*-methyltransferase, yielding two molecules of Met. The SMM cycle might serve to achieve short-term control of

AdoMet levels in plant cells, thus controlling the commitment of one-carbon units into methyl-group synthesis (9-11).

Despite recent progress in elucidating the synthesis of Met and its complex regulation little is known about the catabolism of this amino acid in plant cells. Several authors have reported that plants or plant tissues emit volatile sulfur-containing compounds such as methanethiol, dimethyl disulfide or dimethyl sulfide as a consequence of the accumulation of free Met (6, 12, 13). The process responsible for the production of these volatiles and its physiological significance are still unknown.

In this study we have cloned an *Arabidopsis* cDNA coding a functional Met γ -lyase, an enzyme catalyzing the γ -cleavage of Met into methanethiol, α -ketobutyrate and ammonia. The metabolic role of this enzyme was analyzed in *Arabidopsis* cells using [^{13}C]-Met and nuclear magnetic resonance (NMR). Beside the accumulation of Met, AdoMet, and SMM, we also identified unequivocally two major metabolites deriving from the catabolism of Met, namely *S*-methylcysteine and isoleucine. We present here several lines of evidence indicating that the γ -cleavage of Met into ammonia, α -ketobutyrate and methanethiol is the first event that leads to the formation of these two compounds.

RESULTS

Cloning and biochemical characterization of Met γ -lyase from *Arabidopsis*

In various microorganisms and in primitive protozoa (*Entamoeba histolytica*, *Trichomonas vaginalis*) Met catabolism is initiated by the γ -cleavage of the molecule (14-17). This reaction is catalyzed by Met γ -lyase (MGL) and leads to the formation of α -ketobutyrate (α KB), ammonia and methanethiol (CH_3SH). Searches of the *Arabidopsis* genome for homologs of bacterial MGL detected a small set of genes encoding pyridoxal-phosphate dependent enzymes involved in Met/Cys metabolism. The three best hits of the BlastP searches were cystathionine- γ -synthase (At3g01120), cystathionine- β -lyase (At3g57050), and a putative cystathionine- γ -synthase enzyme (At1g33320) for which there is no corresponding EST or full-length cDNA, thus suggesting a pseudo-gene. The fourth hit corresponded to the At1g64660 gene encoding a predicted protein with 28 to 32% identity (48% similarity) with MGL from *Pseudomonas putida* and *E. histolytica*, respectively.

To determine whether the At1g64660 protein is a functional MGL, the full-length coding sequence was cloned into the *E. coli* expression plasmid pET20b(+), allowing production of a recombinant protein with a C-terminal His-tag. The purified recombinant protein exhibited a characteristic absorption peak at 420 nm observed for PLP-containing enzymes. To investigate the MGL activity catalyzed by At1g64660, we employed three assays allowing determination of the three products released during the γ -elimination of Met. As shown in Fig. 1A, equal amounts of CH_3SH , NH_3 and α KB were detected, demonstrating that the protein has a MGL activity and may therefore be termed AtMGL. The recombinant AtMGL obeyed Michaelis-Menten kinetics with a K_m value for Met of 10.6 ± 0.9 mM. This value is elevated but compares well with those determined for other MGL enzymes (0.9 to 10 mM) (15-17). Taken together these data indicate that the At1g64660 gene encodes a functional MGL in *Arabidopsis*.

The At1g64660 cDNA encodes a 441-residue protein with a predicted molecular mass of 47,820 Da. The deduced protein sequence did not show any predictable targeting signal, suggesting a cytosolic location of AtMGL. To verify this prediction, we raised polyclonal antibodies against recombinant AtMGL and analyzed the subcellular distribution of the enzyme by Western blot using chloroplasts, mitochondria and a cytosolic enriched fraction purified from *Arabidopsis* cells. As shown in Fig. 1B, *Arabidopsis* MGL is a 48 ± 1 kDa enzyme located in the cytosol.

NMR-profiling of Met metabolism in *Arabidopsis* cells

Metabolic profiling of Met metabolism was performed using *Arabidopsis* cells fed with 2 mM [$^{13}\text{C}_2$]- or [$^{13}\text{C}_5$]-Met. As shown in Fig. 2A, the intracellular Met concentration increased rapidly (maximal uptake rate $\sim 5 \mu\text{mol h}^{-1} \text{g}^{-1}$ FW) to reach a maximal value after 24 h of incubation. At that time, all the exogenous Met has been taken up and the intracellular Met concentration was ~ 500 -fold higher than in control cells ($20\text{-}30 \text{ nmol g}^{-1}$ FW). Then, the intracellular Met concentration started to rapidly decline, indicating a fast metabolism. From [$^{13}\text{C}_5$]-Met feeding experiments we were able to identify [$^{13}\text{C}_5$]-SMM, [$^{13}\text{C}_5$]-SMM and [$^{13}\text{C}_5$]-AdoMet. In contrast to Met, AdoMet concentration quickly reached a plateau value ($0.15\text{-}0.25 \mu\text{mol g}^{-1}$ FW) after 3 h of incubation (Fig. 2B). Since control cells contained $20 \pm 5 \text{ nmol AdoMet g}^{-1}$ FW, these data indicated a 10-fold increase in AdoMet concentration following Met addition. This rapid increase followed by the steady value reflects the high turnover of AdoMet through the methyl cycle activity in the cytosol (4), and a tight control of the pool. Also, the unique capacity that plants have to transfer a methyl group from AdoMet to Met (9, 10) is illustrated by the accumulation of SMM in *Arabidopsis* cells (Fig. 2B). Indeed, though SMM concentration was too low to be determined in control cells, this compound reached a maximal value of about $2 \mu\text{mol g}^{-1}$ FW after 48 h incubation with Met. These data are in accordance with the assumption that the SMM cycle in plants serves to prevent accumulation of AdoMet (10).

In addition to AdoMet and SMM, our experiments revealed previously unsuspected metabolites deriving from Met. Indeed, feeding experiments with either [$^{13}\text{C}_2$]- or [$^{13}\text{C}_5$]-Met revealed peaks corresponding to [$^{13}\text{C}_2$]-isoleucine (Ile) and [$^{13}\text{C}_4$]-*S*-methylcysteine (SMC), respectively (Fig. 2A). The time-course accumulation of these compounds differed from that of AdoMet or SMM since Ile and SMC could not be detected during the first 3-6 h of incubation with Met. The Ile concentration was about $0.15 \mu\text{mol g}^{-1}$ FW in control cells and increased by 20-fold after 48 h incubation with Met. Ile is an essential branched chain amino acid synthesized from threonine (18). The first intermediate of this pathway is αKB , a compound formed through a reaction catalyzed by threonine deaminase. SMC was not detectable in control cells, prior addition of Met. This compound has been measured in relatively large amounts in several legume seeds but could not be detected as a product of sulfur assimilation in other plant species (2). The biosynthetic route for this compound is unclear; SMC can be formed by the methylation of Cys using AdoMet or SMM as a methyl group donor or by a side reaction catalyzed by *O*-acetylserine (thiol) lyase in the presence of *O*-acetylserine and CH_3SH (2).

Our feeding experiments with Met were systematically associated with a characteristic smell, typical of sulfur containing molecules. The use of [³⁵S]-Met and [¹⁴C₅]-Met indicated that the volatile compounds emitted by cells derived from both the sulfur and the methyl group of Met. These data suggested that *Arabidopsis* cells accumulating Met emitted CH₃SH, and most probably its oxidative form dimethyl disulfide (CH₃SSCH₃), as previously observed for other plants with an altered Met metabolism (12, 13).

Met catabolism in *Arabidopsis* cells is initiated by a γ -cleavage process

The data presented above indicated that the catabolism of Met in *Arabidopsis* cells is associated with the formation of Ile and SMC. Also, the γ -cleavage of Met results in α KB, NH₃ and CH₃SH production. It is thus possible that α KB serves as a precursor for Ile synthesis and that CH₃SH reacts with *O*-acetylserine, an activated form of serine (Ser), to produce SMC. In order to test this possibility, we followed the catabolism of [¹³C₅]-Met in presence of either [¹³C₂]-Ser or [¹³C₃]-Ser. As shown in Fig. 3, we could observe, in addition to [¹³C₄]-SMC that derives from [¹³C₅]-Met, peaks corresponding to [¹³C₂]-SMC or [¹³C₃]-SMC when [¹³C₂]-Ser or [¹³C₃]-Ser were added in the medium, respectively. This dual-labelling of SMC clearly indicated that this molecule was produced from the nitrogen/carbon skeleton of Ser and the methyl group of Met. In addition, when *Arabidopsis* cells were cultivated for 24 h in presence of [¹³C₃]-Ser and CH₃SH (no addition of Met), a resonance corresponding to [¹³C₃]-SMC was detected (Fig. 3D). This peak was not visible in the absence of CH₃SH (not shown). This result indicates that CH₃SH diffused within the cells and could directly react with the acetylated derivative of Ser to generate SMC.

The synthesis of Ile is blocked by sulfonyleurea such as methylsulfometuron, a potent inhibitor of acetohydroxy acid synthase, the enzyme catalyzing the second step in the pathway (19). In presence of this inhibitor, the catabolism of Met in *Arabidopsis* cells was not anymore associated with the production of Ile, as expected (Fig. 4). In addition, SMC was still produced, although in lower amount, indicating that the γ -cleavage reaction of Met still occurred. Because the substrate of acetohydroxy acid synthase is α KB, it was logical to think that this compound should accumulate in presence of sulfonyleurea. This was not the case but we detected small amount of α -aminobutyrate (homoalanine), the transaminated product of α KB (Fig. 4), as already described for plants treated with sulfonyleurea (19).

MGL belongs to the γ -subfamily of pyridoxal-phosphate dependent enzymes and, as the other members of this family, is inhibited by propargylglycine (14, 17). As shown in Fig. 4, the

simultaneous feeding of *Arabidopsis* cells with 2 mM Met and 1 mM propargylglycine resulted in a 3 to 6-fold decrease of Ile and SMC in the treated versus control cells, whereas Met and SMM were not affected. From these data we can conclude that propargylglycine significantly impaired the γ -cleavage of Met, first process towards Ile and SMC synthesis.

Met γ -lyase expression is induced by high Met concentration

Identification of MGL as the first enzyme involved in Met degradation in *Arabidopsis* cells raises the question of the physiological function of this catabolic route. Indeed, the apparent K_m of AtMGL for Met was high (~ 10 mM) and the amount of free Met in *Arabidopsis* cells grown under standard conditions was 25 ± 5 nmol g⁻¹ FW. Assuming that all intracellular Met is located in the cytoplasm, we estimated that the cytoplasmic concentration is not more than 150-200 μ M, that is 50 times lower than the K_m value measured for the recombinant enzyme. This finding, together with the 3-6 h lag phase needed for the onset of SMC and Ile production (Fig 2A) suggested that this catabolic pathway operates preferentially when Met has accumulated above a certain value in the cytoplasm. Western blots shown in Fig. 5A indicated that MGL was expressed under standard growth conditions and was strongly induced in *Arabidopsis* cells accumulating Met. Indeed, while the amount of MGL gradually decreased in control cells during the growth phase, the addition of 2 mM Met in the culture medium resulted in a strong induction (up to 40-fold) of the enzyme (Fig. 5A). Quantitative RT-PCR analysis of the AtMGL mRNA steady-state level indicated that the induction of the protein in Met-treated cells was not associated with transcript accumulation (not shown), thus suggesting a post-transcriptional control of the amount of the enzyme.

To further address the physiological function of MGL *in planta*, we compared the expression pattern of the enzyme (as determined by Western blot) with microarrays data available in the *Arabidopsis* Genevestigator database (20). As shown in Fig. 5B, the MGL protein is present at different levels in all examined organs, except in dry mature seeds where the protein could not be detected. There is no direct correlation between the accumulation of the AtMGL protein and the corresponding transcript. For example, rosette leaves exhibit low level of the *AtMGL* mRNA but the highest amount of the protein and, contrarily, the highest transcript level found in dry seeds is not accompanied by the accumulation of the enzyme. Also, the AtMGL protein is highly expressed in imbibed seeds, suggesting that transcripts accumulation at the dry mature stage is a prerequisite for a rapid production of MGL during the imbibition process. The discrepancy between mRNA and protein levels could not be correlated to any particular status of free Met in the different plant organs, which contain comparable amounts of free

Met (20-70 nmol g⁻¹ FW) (21). Taken together, these data suggest that MGL could participate in the regulation of Met homeostasis in all plant organs and could play an important role in the resumption of cell metabolism during germination.

DISCUSSION

Because of the central position of Met in many cellular processes, the homeostasis of this amino acid must be tightly controlled. The main reactions involved in the synthesis, utilization and degradation of Met in higher plants are summarized in Fig. 6. The production of SMM through the AdoMet-dependent methylation of Met has been proposed to achieve short-term control of AdoMet level and to function as a storage or transport form of Met when this amino acid is present in excess (9-11). Our results corroborate these findings since *Arabidopsis* cells that accumulate elevated amounts of Met are able to maintain a low and steady concentration of AdoMet while they accumulate large amounts of SMM. The accumulation of this compound cannot deal however with a large excess of Met, possibly because of the energy cost of the synthesis (one ATP per SMM molecule), and Met must be removed through other ways. From our data, we could estimated the metabolic fate of incorporated Met as follows: after 24 h incubation, 45% of Met taken up from the medium was recovered as free Met, 5% was converted to SMM, and 40% was cleaved to produce CH₃SH, NH₃ and αKB (the remaining 10% could not be determined by NMR and could correspond to Met incorporated into proteins). Most of CH₃SH produced by the γ-cleavage of Met was released from the cells as a volatile compound whereas 25% was used for the production of SMC.

Two pathways leading to Met catabolism have been described. The first route is initiated by transamination of Met, forming 4-methylthio-2-oxobutyric acid (KMBA). It has been characterized in a variety of animals (22), in yeasts (23, 24), and in *Lactococcus lactis* (25). [¹³C]-NMR studies performed in yeast cells indicated that KMBA was mainly decarboxylated then reduced to produce methionol or, in a lower extent, cleaved by a demethiolase activity to produce CH₃SH and αKB. Neither SMC nor Ile were detected in these experiments. In our studies, we could not detect the production of KMBA or methionol, thus indicating that the catabolism of Met in *Arabidopsis* cells is not initiated by a transaminase activity. Our results indicate that Met degradation in *Arabidopsis* cells is initiated by a γ-cleavage of the molecule, producing NH₃, CH₃SH and αKB. This second route is initiated by Met γ-lyase (EC 4.4.1.11), a pyridoxal-phosphate dependent enzyme also found in some microorganisms (14-17).

In *Arabidopsis*, MGL is a cytosolic enzyme encoded by the At1g64660 gene. MGL is present in *Arabidopsis* cells grown under standard conditions and in all analyzed organs, except in quiescent dry mature seeds, thus suggesting that this enzyme is probably involved in the regulation of Met homeostasis in various situations. In seeds, the MGL protein synthesis is strongly induced during the imbibition period from a pool of preexisting mRNA. These data suggest an important role of the enzyme in the germination process. If this hypothesis holds true, metabolic engineering strategies of the Met γ -cleavage reaction is a promising way to produce seeds with an improved Met content. Also, we demonstrated that the MGL protein accumulated when the intracellular level of free Met has reached elevated concentration (10-15 mM). Likewise, it was shown that the previously unknown enzymatic system that degrades Met in pumpkin leaf discs was induced by Met (13). The induction of MGL expression in plant tissues in response to high Met levels is possibly a response to by-pass the elevated K_m of the enzyme for Met (about 10 mM).

It was previously shown that plants that accumulate high concentrations of soluble Met were characterized by the emission of CH₃SH and dimethyl disulfide (12, 13). Our feeding experiments with Met, Ser and CH₃SH (Fig. 3) indicated that part of CH₃SH could be condensed to an activated Ser molecule to form SMC. This reaction likely involved *O*-acetylserine (thiol) lyase, an enzyme that normally condenses *O*-acetylserine with sulfide to produce Cys and acetate (2). Indeed, in support to our *in vivo* data, *in vitro* experiments previously showed that plant *O*-acetylserine (thiol) lyase has the capacity to form SMC in presence of *O*-acetylserine and CH₃SH (26). An alternative route for SMC synthesis in *Arabidopsis* could be envisaged by comparison with selenium (Se) metabolism in *Astragalus* species. These plants have the ability to hyperaccumulate Se and possess a Se-Cys methyltransferase that catalyzes the synthesis of Se-methylselenocysteine using either AdoMet or SMM as methyl sources (27). The closest *Arabidopsis* homologs of the Se-Cys methyltransferase found in *Astragalus* correspond to the three isoforms of the enzyme Hcy methyltransferase that operates in the SMM cycle (Fig. 6) (10, 28). Since these three isoenzymes have a very poor activity with Cys as substrate and are inhibited by Met, their involvement in the synthesis of SMC is very unlikely. Taken together, these data suggest strongly that *Arabidopsis* cells don't have the capacity to methylate Cys and that SMC synthesis is due to a side reaction of *O*-acetylserine (thiol) lyase in presence of *O*-acetylserine and CH₃SH.

The physiological significance of SMC production is not known. SMC is present in relatively large amount in the seeds of several legumes and there are some lines of evidence indicating

that SMC is metabolized, its methyl moiety, at least, being incorporated into the methyl of Met (2). In our experimental conditions we could not identify metabolites deriving from SMC but *in vivo* NMR experiments allowed us to determine that SMC was produced in the cytoplasm and then rapidly transferred to the vacuole (not shown), thus suggesting a storage role for the molecule. Our NMR profiling data also established that the C₂ of Met was recovered as the C₂ of Ile, thus indicating that part of αKB produced by the γ-cleavage of Met in the cytosol can be transported to plastids and integrate the Ile biosynthetic pathway. Thus, in situations of excess Met, this γ-cleavage process results in the salvage of the nitrogen/carbon backbone of Met into another essential amino acid, Ile, and in the formation of a potential storage form for sulfide or methyl groups, SMC.

Acknowledgments

We thank Drs Elisabeth Gout for wise advices in the analysis of NMR data, Gilles Curien for gift of the “CGS3” plasmid, Renaud Dumas and Claude Alban for helpful discussions.

MATERIALS AND METHODS

Materials

Arabidopsis thaliana (ecotype Columbia) cell suspension cultures were grown under continuous light ($40 \mu\text{E m}^{-2}\text{s}^{-1}$) at 23°C with rotary agitation at 125 rpm in Gamborg's B5 medium supplemented with $1 \mu\text{M}$ 2-naphtalene acetic acid and 1.5% (w/v) sucrose. Cells were subcultured every 7 days and Met feeding experiments were started the third day of growth. For each NMR determination, cells (8-10 g fresh weight) were kept in a volume of 0.2 L and stirred continuously at 125 rpm in the presence of the [^{13}C]-labelled compound for the required time. [^{13}C]-labelled products (99%) were purchased from Lemans (Saint-Quentin-en-Yvelines, France), and all other biochemicals were obtained from Sigma-Aldrich.

Perchloric acid extracts

At each time point, 0.2 L of the cell suspension culture was collected to determine the amount of ^{13}C -labelled compound that had been incorporated within the cells. Cells were washed with distilled water to remove all traces of external [^{13}C]-labelled compound, weighed, quickly frozen in liquid nitrogen, and ground to a fine powder with 0.9 mL of 70% (v/v) perchloric acid and 250 μmol maleate (internal standard). After thawing, the suspension was centrifuged at $15,000 \times g$ for 10 min to remove particulate matter, and the supernatant neutralized with 2 M KHCO_3 to pH ~ 5 . The supernatant was then centrifuged at $10,000 \times g$ for 10 min to remove KClO_4 ; the resulting supernatant was lyophilized, dissolved in 2.5 mL water containing 10% (v/v) D_2O , and neutralized to pH 7.5.

NMR measurements

Spectra of neutralized perchloric acid extracts were recorded on a Bruker NMR spectrometer (AMX 400, WB) equipped with a 10 mm multinuclear probe tuned at 100.6 MHz for ^{13}C NMR studies. The [^{13}C] NMR acquisition conditions were as previously described (29). Spectra of standard solutions of known compounds at pH 7.5 were compared with that of perchloric acid extracts of *Arabidopsis* cells. The definitive assignments were made after running a series of analysis to determine the pH-dependent chemical shift of perchloric acid extracts in which the authentic compound was added (30). The yield of recovery ($\sim 80\%$) was estimated by adding known amounts of authentic compounds to frozen cells before grinding. The chemical shifts were (in ppm): [$^{13}\text{C}_3$]-Ser, 61.14; [$^{13}\text{C}_2$]-Ile, 60.42; [$^{13}\text{C}_2$]-Met, 54.78; [$^{13}\text{C}_2$]-SMC, 54.11; [$^{13}\text{C}_3$]-SMC, 35.33; [$^{13}\text{C}_5$]-SMM, 25.43; [$^{13}\text{C}_5$]-SMM, 25.39; [$^{13}\text{C}_5$]-

AdoMet, 24.07; [¹³C₄]-SMC, 15.35; [¹³C₅]-Met, 14.71. Spectra were analyzed using MestReC Lite software (Mestrelab Research).

AtMGL cDNA cloning

A full length cDNA coding AtMGL (At1g64660) was obtained by PCR amplification of an *A. thaliana* (var. Columbia) cDNA library constructed in pYES (31). Primers MGL1 (5'-GAGACATATGGCTCATTTCCTCGAGACAC-3') and MGL2 (5'-GAGAGAATTCAT-TCTGAGGAATGCTTTCTCG-3') that overlap the initiation Met codon and the stop codon of At1g64660, respectively, and create *Nde*I and *Eco*RI restriction sites (underlined) were used for the cloning of AtMGL into the pET20b(+) expression vector (Novagen). The resulting plasmid pET-AtMGL encodes a fusion between the complete ORF of At1g60660 and a C-terminal hexa-histidine tag. The pET-AtMGL construct was introduced first into *E. coli* DH5 α , sequenced on both strands (Genome Express, Meylan, France), and then introduced into *E. coli* BL21 CodonPlus (DE3) RIL cells (Stratagene).

Overexpression and purification of recombinant AtMGL

E. coli BL21 cells harboring pET-AtMGL were grown at 37°C in LB medium containing carbenicillin (100 μ g mL⁻¹) until A₆₀₀ reached 0.6. Isopropylthio- β -D-galactoside was added (0.4 mM) and the cells were further grown for 16 h at 37°C. Cells from 0.5-L cultures were collected by centrifugation (4,000 x g, 20 min), suspended in 15 mL of buffer A (50 mM KPi, pH 8.0, 500 mM NaCl) containing 10 mM imidazole and a cocktail of protease inhibitors (n°1873580, Roche Applied Science), then disrupted by sonication. The soluble protein extract was separated from cell debris by centrifugation at 16,000 x g for 30 min and applied onto a nickel-nitrilotriacetic acid-agarose column (Qiagen) previously equilibrated with buffer A containing 10 mM imidazole. After successive washes with buffer A supplemented with 10, 30 and 50 mM imidazole, the recombinant protein was eluted with buffer A containing 250 mM imidazole. Fractions containing AtMGL were pooled, dialyzed against 20 mM KPi (pH 7.5) and 10% (v/v) glycerol, and concentrated by centrifugation (Microsep, 30 kDa cut-off, Pall Filtron).

Assays for MGL

MGL activity was measured using three different assays to follow the production of i) α KB using a coupled assay with lactate dehydrogenase (32); ii) ammonia using a coupled assay with glutamate dehydrogenase (33); iii) CH₃SH with 5,5'-dithiobis(2-nitrobenzoic acid)

DTNB (34). Since the last assay was the most sensitive, it was used subsequently for all kinetic determinations. The standard assay mixture contained 50 mM Tricine-Na, pH 7.2, 20 μ M pyridoxal 5'-phosphate, 25 mM L-methionine, 0.5 to 5 μ g of AtMGL and 0.1 mM DTNB in a final volume of 400 μ L. The reaction was initiated with the enzyme and the formation of thiophenolate was continuously monitored at 412 nm ($\epsilon_{412} = 13,600 \text{ M}^{-1} \text{ cm}^{-1}$) and 30°C. For the α KB assay DTNB was replaced by lactate dehydrogenase (3.4 units) and NADH (200 μ M). The coupling assay for ammonia determination contained glutamate dehydrogenase (4.5 units), α KB (10 mM), and NADH (200 μ M). In both assays, the reaction was initiated with the recombinant AtMGL and the oxidation of NADH was followed at 340 nm and 30°C. The initial velocities were linear for at least 5 min and rates varied linearly with the enzyme concentration.

Western blot analysis

Total soluble proteins from *Arabidopsis* cells or plant organs were extracted by grinding powdered samples in 50 mM Tris-HCl, pH 7.5, 10 mM β -mercaptoethanol, 5% (v/v) glycerol, and a cocktail of protease inhibitors. Samples were centrifuged at 16,000 $\times g$ for 20 min at 4°C and the supernatant used as a source of soluble proteins. Chloroplasts and mitochondria were isolated and purified using Percoll gradients as previously described (4). A cytosolic-enriched fraction was prepared from *Arabidopsis* protoplasts using the procedure described in (4). Proteins were resolved by SDS-PAGE and electroblotted to nitrocellulose membrane. Membranes were probed using AtMGL polyclonal antibodies produced in Guinea pigs (Centre Valbex, Villeurbanne, France) and detection was done by chemiluminescence. Protein quantification was achieved using the ECL Plus™ Western Blotting detection reagents and a Typhoon 9400 scanner (Amersham Biosciences).

LEGENDS FOR FIGURES

Fig. 1. Biochemical characterization of MGL from *Arabidopsis*.

(A) Steady-state analysis of the recombinant AtMGL reaction products. Enzyme activity was measured at 30°C using three assays to determine CH₃SH, NH₃, and αKB produced during Met cleavage. The specific activity of AtMGL was 340 ± 40 nmol min⁻¹ mg⁻¹ protein.

(B) Subcellular localization of MGL in *Arabidopsis*. Soluble proteins (20 µg per lane) from a total cell extract (Tot), purified chloroplasts (Cp), purified mitochondria (Mit), and a cytosolic-enriched fraction (Cyt) were analyzed by Western blot using polyclonal antibodies raised against AtMGL. The polypeptide detected with the AtMGL serum was 48 ± 1 kDa. Antibodies against *Arabidopsis* methionine synthase isoforms (cytosolic and chloroplastic polypeptides at 84 and 81 kDa, respectively) and pea hydroxymethyl dihydropterin pyrophosphokinase/dihydropteroate synthase (HPPK-DHPS, mitochondrial marker) were used to analyze cross-contaminations between subfractions (4, 35).

Fig. 2. Kinetics of Met incorporation and metabolism in *Arabidopsis* cells.

Cells were fed with either 2 mM [¹³C₂]-Met or 2 mM [¹³C₅]-Met, harvested at the indicated time intervals, and perchloric acid extracts were analyzed by [¹³C]-NMR. The accumulation of Met, SMC and Ile is shown in (A), that of SMM and AdoMet in (B).

Fig. 3. Representative *in vitro* [¹³C]-NMR spectra showing S-methylcysteine synthesis in *Arabidopsis* cells.

Perchloric acid extracts were prepared from cells incubated for 24 h in presence of the compounds indicated below and analyzed by [¹³C]-NMR. Magnifications of the resonance peaks of C₂, C₃ and C₄ of SMC are shown. Cells were grown in presence of 2 mM [¹³C₅]-Met (A); 2 mM [¹³C₅]-Met plus 0.5 mM [¹³C₂]-Ser (B); 2 mM [¹³C₅]-Met plus 0.5 mM [¹³C₃]-Ser (C); 2 mM [¹³C₃]-Ser plus 2 mM CH₃SH (D). The amount of SMC produced was 3.1-3.4 µmol g⁻¹ FW in experiments A-C and 5.9 µmol g⁻¹ FW in experiment D.

Fig. 4. Effects of sulfonylurea and propargylglycine on Met catabolism in *Arabidopsis* cells.

Cells were incubated for 24 h in presence of either 2 mM [¹³C₂]-Met or 2 mM [¹³C₅]-Met plus either methylsulfometuron (sulfonylurea, SU, 1.2 µM) or D,L-propargylglycine (PPG, 1 mM).

Perchloric acid extracts were analyzed by [¹³C]-NMR. The presented results are the average of three distinct experiments ± SD.

Fig. 5. MGL expression patterns in response to Met and in different *Arabidopsis* organs.

(A) MGL protein expression in *Arabidopsis* cells treated or not with 2 mM Met. Total soluble proteins (20 µg per lane) were analyzed by Western blot using antibodies against AtMGL. At each time point, the ratio between MGL levels in treated versus control cells was measured using the ECL Plus™ Western Blotting detection reagents and a Typhoon 9400 scanner (means ± SD from two independent cell cultures).

(B) AtMGL mRNA and protein expression levels in *Arabidopsis* organs. Protein expression was analyzed by Western blot as described above: cell suspension cultures (C), roots (R), stems (S), rosette leaves (L), flowers (F), siliques (S), dry mature seeds (DS), and seeds imbibed with water for 24 h at 4°C (IS). Steady-state *AtMGL* (*At1g64660*) mRNA levels were obtained from the *Arabidopsis* microarray database Genevestigator available online (www.genevestigator.ethz.ch/). The protein and mRNA levels relative abundance were referred to the expression found in cell suspension cultures. #, no detectable protein; * no data available from the microarray database.

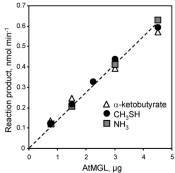
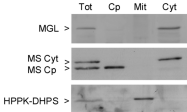
Fig. 6. Schematic representation of Met metabolism in *Arabidopsis*.

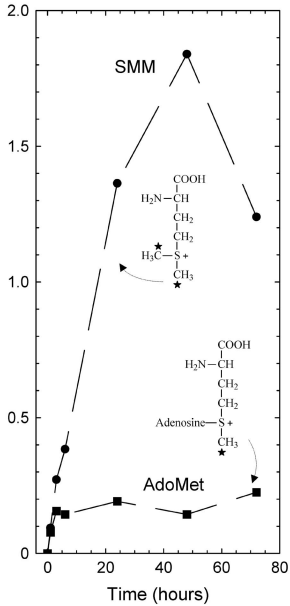
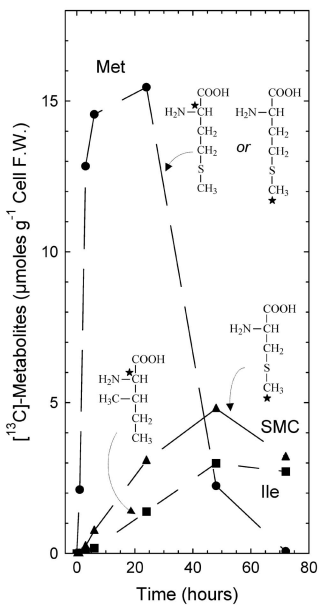
Compounds resulting from the γ-cleavage of Met are indicated in grey frames. 1, serine acetyltransferase; 2, *O*-acetylserine (thiol) lyase; 3, threonine synthase; 4, threonine deaminase; 5, cystathionine-γ-synthase; 6, cystathionine-β-lyase; 7, Met synthase; 8, Met γ-lyase; 9, AdoMet synthetase; 10, methyltransferases; 11, AdoHcy hydrolase; 12), Hcy *S*-methyltransferase; 13), AdoMet:Met *S*-methyltransferase. AdoHcy, *S*-adenosyl Hcy; cysta, cystathionine; Hcy, homocysteine; OAS, *O*-acetylserine; P-HSer, *O*-phosphohomoserine; 5-CH₃-THF, 5-methyl-tetrahydrofolate; THF, tetrahydrofolate; Thr, threonine.

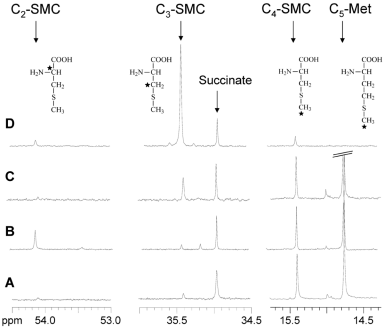
REFERENCES

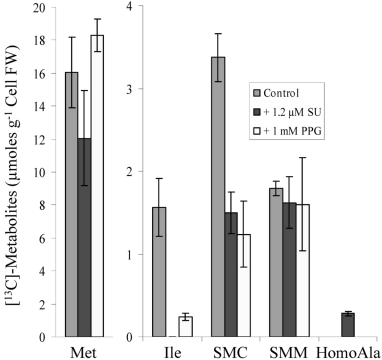
1. Ravanel, S., Gakiere, B., Job, D. & Douce, R. (1998) *Proc Natl Acad Sci U S A* **95**, 7805-12.
2. Giovanelli, J., Mudd, S. H. & Datko, A. H. (1980) in *The biochemistry of plants*, ed. Mifflin, B. J. (Academic Press, New York), Vol. 5, pp. 453-487.
3. Galili, G. & Hofgen, R. (2002) *Metab Eng* **4**, 3-11.
4. Ravanel, S., Block, M. A., Rippert, P., Jabrin, S., Curien, G., Rébeillé, F. & Douce, R. (2004) *J Biol Chem* **279**, 22548-57.
5. Curien, G., Ravanel, S. & Dumas, R. (2003) *Eur J Biochem* **270**, 4615-27.
6. Hacham, Y., Avraham, T. & Amir, R. (2002) *Plant Physiol.* **128**, 454-62.
7. Onouchi, H., Nagami, Y., Haraguchi, Y., Nakamoto, M., Nishimura, Y., Sakurai, R., Nagao, N., Kawasaki, D., Kadokura, Y. & Naito, S. (2005) *Genes Dev* **19**, 1799-810.
8. Giovanelli, J. (1987) *Methods Enzymol.* **143**, 419-453.
9. Kocsis, M. G., Ranocha, P., Gage, D. A., Simon, E. S., Rhodes, D., Peel, G. J., Mellema, S., Saito, K., Awazuhara, M., Li, C. J., Meeley, R. B., Tarczynski, M. C., Wagner, C. & Hanson, A. D. (2003) *Plant Physiol* **131**, 1808-1815.
10. Ranocha, P., McNeil, S. D., Ziemak, M. J., Li, C., Tarczynski, M. C. & Hanson, A. D. (2001) *Plant J* **25**, 575-84.
11. Bourgis, F., Roje, S., Nuccio, M. L., Fisher, D. B., Tarczynski, M. C., Li, C., Herschbach, C., Rennenberg, H., Pimenta, M. J., Shen, T. L., Gage, D. A. & Hanson, A. D. (1999) *Plant Cell* **11**, 1485-98.
12. Boerjan, W., Bauw, G., Van_Montagu, M. & Inze, D. (1994) *Plant Cell* **6**, 1401-14.
13. Schmidt, A., Rennenberg, H., Wilson, L. G. & Filner, P. (1985) *Phytochemistry* **24**, 1181-1185.
14. Dias, B. & Weimer, B. (1998) *Appl Environ Microbiol* **64**, 3327-31.
15. McKie, A. E., Edlind, T., Walker, J., Mottram, J. C. & Coombs, G. H. (1998) *J Biol Chem* **273**, 5549-56.
16. Tanaka, H., Esaki, N. & Soda, K. (1985) *Enzyme and Microbial Technology* **7**, 530-537.
17. Tokoro, M., Asai, T., Kobayashi, S., Takeuchi, T. & Nozaki, T. (2003) *J Biol Chem* **278**, 42717-27.
18. Singh, B. K. (1999) in *Plant amino acids*, ed. Singh, B. K. (Marcel Dekker, Inc., New York), pp. 227-247.

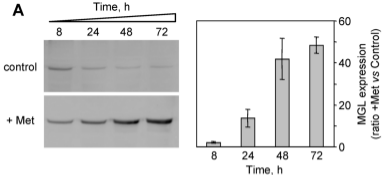
19. Shaner, D. L. & Singh, B. K. (1993) *Plant Physiol* **103**, 1221-1226.
20. Zimmermann, P., Hennig, L. & Gruissem, W. (2005) *Trends Plant Sci* **10**, 407-9.
21. Kim, J., Lee, M., Chalam, R., Martin, M. N., Leustek, T. & Boerjan, W. (2002) *Plant Physiol* **128**, 95-107.
22. Livesey, G. (1984) *Trends Biochem Sci* **9**, 27-29.
23. Arfi, K., Landaud, S. & Bonnarme, P. (2006) *Appl Environ Microbiol* **72**, 2155-62.
24. Perpete, P., Duthoit, O., De Maeyer, S., Imray, L., Lawton, A. I., Stavropoulos, K. E., Gitonga, V. W., Hewlins, M. J. & Dickinson, J. R. (2006) *FEMS Yeast Res* **6**, 48-56.
25. Gao, S., Mooberry, E. S. & Steele, J. L. (1998) *Appl Environ Microbiol* **64**, 4670-5.
26. Ikegami, F., Kaneko, M., Kamiyama, H. & Murakoshi, I. (1988) *Phytochemistry* **27**, 697-701.
27. Neuhierl, B., Thanbichler, M., Lottspeich, F. & Bock, A. (1999) *J Biol Chem* **274**, 5407-14.
28. Ranocha, P., Bourgis, F., Ziemak, M.J., Rhodes, D., Gage, D.A. & Hanson, AD. (2000) *J Biol Chem* **275**, 15962-8.
29. Mouillon, J. M., Ravel, S., Douce, R. & Rébeillé, F. (2002) *Biochem J* **363**, 313-9.
30. Gout, E., Bligny, R., Pascal, N. & Douce, R. (1993) *J Biol Chem* **268**, 3986-92.
31. Elledge, S. J., Mulligan, J. T., Ramer, S. W., Spottswood, M. & Davis, R. W. (1991) *Proc Natl Acad Sci U S A* **88**, 1731-5.
32. Czok, R. & Lamprecht, W. (1974) in *Methods of Enzymatic analysis*, ed. Bergmeyer, H. (Academic Press, Inc, New-York, San Francisco, London, Vol. 3, pp. 1446-1451.
33. Kun, E. & Kearney, E. B. (1974) in *Methods of enzymatic analysis*, ed. Bergmeyer, H. U. (Academic Press, Inc, New-York, San Francisco, London, Vol. 4, pp. 1802-1806.
34. Ellman, G. L. (1959) *Arch Biochem Biophys* **82**, 70-7.
35. Rébeillé, F., Macherel, D., Mouillon, J. M., Garin, J. & Douce, R. (1997) *EMBO J* **16**, 947-57.

A**B**







A**B**