



**HAL**  
open science

## The contribution of the neural crest to the vertebrate body.

Elisabeth Dupin, Sophie Creuzet, Nicole Le Douarin

► **To cite this version:**

Elisabeth Dupin, Sophie Creuzet, Nicole Le Douarin. The contribution of the neural crest to the vertebrate body.. *Advances in Experimental Medicine and Biology*, 2006, 589, pp.96-119. hal-00113757

**HAL Id: hal-00113757**

**<https://hal.science/hal-00113757>**

Submitted on 22 Nov 2006

**HAL** is a multi-disciplinary open access archive for the deposit and dissemination of scientific research documents, whether they are published or not. The documents may come from teaching and research institutions in France or abroad, or from public or private research centers.

L'archive ouverte pluridisciplinaire **HAL**, est destinée au dépôt et à la diffusion de documents scientifiques de niveau recherche, publiés ou non, émanant des établissements d'enseignement et de recherche français ou étrangers, des laboratoires publics ou privés.

This article has been published in *Advances in Experimental Medicine and Biology*,  
2006, vol. 589 ;Springer  
The publication is available online at  
<http://www.springerlink.com/>

## The contribution of the neural crest to the vertebrate body

Elisabeth Dupin, Sophie Creuzet and Nicole M. Le Douarin

*Laboratoire d'Embryologie Cellulaire et Moléculaire  
CNRS UMR 7128  
49bis, avenue de la Belle Gabrielle  
94736 NOGENT-sur-MARNE cedex France  
Tel: 33 1 45 14 15 15 – Fax: 33 1 48 73 43 77  
[nicole.le-douarin@college-de-france.fr](mailto:nicole.le-douarin@college-de-france.fr)*

### Summary

Abstract

Introduction

The derivatives of the NC

Pathways and molecular control of NCC migration

The mesectoderm is at the origin of most head structures

The posterior limit of the NC-derived skeleton in mammals

Contribution of the mesectoderm to the cardio-vascular and peri-ocular structures

Hox gene expression in the cephalic NCCs and their derivatives

Shifting rostrally the limit of Hox gene expression

Patterning the facial skeleton by the pharyngeal endoderm

Role of the superficial ectoderm in shaping the face

Heterogeneity of progenitors and stem cells in the early NC

Resident NC stem cells are present in differentiated tissues up to adulthood

Plasticity of NC-derived phenotypes

Concluding remarks

Table 1; Figures 1 to 10

### Key words

Mesectoderm; Endoderm; *Hox* genes; Skeleton; FGF8; Quail-chick chimera; Stem cells; Pluripotency; Clonal cultures; Endothelin-3.

## Abstract

As a transitory structure providing adult tissues of the vertebrates with very diverse cell types, the neural crest (NC) has attracted for long the interest of developmental biologists and is still the subject of ongoing research in a variety of animal models. Here we review a number of data from *in vivo* cell tracing and *in vitro* single cell culture experiments, which gained new insights on the mechanisms of cell migration, proliferation and differentiation during NC ontogeny. We put emphasis on the role of *Hox* genes, morphogens and interactions with neighbouring tissues in specifying and patterning the skeletogenic NC cells in the head. We also include advances made towards characterizing multipotent stem cells in the early NC as well as in various NC derivatives in embryos and even in adult.

## Introduction

The neural crest (NC) is a transient structure of the vertebrate embryo which was discovered in 1868 by the Swiss embryologist Wilhelm His.<sup>1</sup> He described it in the chick embryo as a band of cells lying between the neural tube and the future epidermal ectoderm. Since the neural crest cells (NCCs) leaving the dorsal aspect of the closing neural tube, can be seen aggregating laterally into the spinal ganglia, it used often to be called '*ganglion crest*'.

Following its first description, the NC was found in selachians, teleosts, amphibians and all forms of vertebrates (For a review, see ref. 2).

Because its component cells are endowed of migratory properties and become widely distributed over the whole embryo, the NC has readily attracted much interest. The work carried out on the NC during the first half of the 20<sup>th</sup> century and which concerned essentially lower vertebrates, was reviewed in a well-acknowledged monograph by Sven Hörstadius.<sup>3</sup>

A prerequisite for studying the behaviour and fate of NCCs is the availability of markers providing experimental long-term lineage labelling, which allow this cell type to be specifically identified throughout ontogeny.

The quail-chick marker system based on the construction of embryonic chimeras between two species of birds whose cells can be identified, either by the structure of their nucleus or by species-specific monoclonal antibodies, was instrumental in deciphering the contribution of the NC to the various anatomical and histological structures in birds and, by extrapolation, in mammals.<sup>4,5</sup> For a review, see refs. 2 and 6.

Recently, molecular methods have been devised to label the NCCs in mammals by constructing transgenic mice in which expression of either  $\beta$ -galactosidase or of the green fluorescent protein (GFP) is driven by promoters of genes that are expressed in the NCCs. The genes that have so far been used for this purpose are essentially *Wnt1*,<sup>7-9</sup> *Sox10*<sup>10</sup> and *tissue plasminogen activator (tPA)*.<sup>11</sup> In the mouse and in other vertebrates, *Wnt1* is transiently expressed during embryogenesis in the dorsal neural primordium,<sup>12-17</sup> except in the first rhombomere (r1) (see ref. 10 online supplement) and in the early migrating NCCs (See ref. 18 and references therein). Early migratory cephalic and trunk NCCs and their derivatives can also be identified by genetic labelling using the gene encoding tPA,<sup>11</sup> a proteolytic enzyme synthesized by NCCs during the epithelio-mesenchymal transition.<sup>19</sup> *Sox10* transcription factor gene is expressed transiently in the early NC and later remains activated only in neural and melanocytic NC lineages while it is never detected in mesenchymal cells, whether derived from mesectoderm or from mesoderm (See ref. 10 and references therein).

*Sox10* has been used to permanently label post-otic NCCs and trace their fate in the neck and shoulder in transgenic mice.<sup>10</sup> Permanent single cell labelling was obtained in double transgenic mice in which the production of the Cre-recombinase is conditioned upon expression of either *Wnt1* or *Sox10* genes. The *Wnt1-Cre* and *Sox10-Cre* founder mice were

crossed to Cre-conditional *R26R-LacZ* and *-GFP* reporter lines.<sup>20,21</sup> Neither LacZ nor GFP carry a nuclear localization sequence, thus blue staining or fluorescence is mainly in the cytoplasm. After Cre-mediated excision of the floxed cassettes, F1 offspring expresses *LacZ* (or *GFP*) permanently in cells that have expressed *Wnt1* or *Sox10*, even if the endogenous *Wnt1* and *Sox10* genes ceased to be activated during development.<sup>10</sup> This elegant technique is thus a way to get single cell resolution and long-term labelling for NCC fate mapping in mammals. Recombinase-based fate mapping using *Gdf7* gene encoding a Bone morphogenetic protein (BMP) family member, has recently led to characterize a subset of late-emigrating NCCs present in the roof plate, which yield sensory-restricted progenitors.<sup>22</sup>

### **The derivatives of the NC**

The NCCs are remarkably invasive. There is virtually no tissue in the embryonic and adult body that does not possess cells originating from this highly pluripotent structure.

Investigations carried out in the avian embryo, using the quail-chick chimera system, have allowed the fate map of the NC to be established (**Fig. 1**).

The NC is at the origin of all the neurones and glial cells of the peripheral nervous system (PNS) except for the neurones of certain cranial nerve sensory ganglia.<sup>6</sup>

The PNS includes the sensory ganglia, the sympathetic chains and plexuses, the parasympathetic ganglia and the enteric nervous system (ENS) often called the '*second brain*'<sup>23</sup>, because it includes sensory, intermediate and motor neurones and can function independently from the central nervous system (CNS) which modulates its activity through sympathetic and parasympathetic innervations.

The NC is also at the origin of sensory receptor cells (e.g. Merkel cells and Grandry corpuscles) associated with sensory nerve endings in the skin.<sup>18,24,25</sup>

The NC provides all the peripheral nerves with Schwann cells and the peripheral ganglia with their glial component. The pigment cells of the body (except those of the pigmented retina) derive from the NC, which is also at the origin of endocrine cells: the adrenal medulla and the calcitonin-producing cells (C cells). The latter develop in the ultimobranchial bodies (UB) in all vertebrates except in mammals, where the UB join the thyroid gland in which the C cells form the population of '*clear cells*' (also called '*parafollicular cells*') located between the thyroid follicles.<sup>6</sup>

Another derivative of the NC is the *mesectoderm* i.e., mesenchymal cells which are derived from the ectodermal germ layer, in contrast to the other mesenchymal cells of the body, which are of mesodermal origin.

Mesectodermal cells exit from the cephalic and trunk NC in lower vertebrates (e.g., fish in which they yield the dorsal fin mesenchyme; see ref. 6 and references therein). In amniotes they are mainly restricted to the cephalic level of the neural axis (**Fig. 1**). However it was recently shown in the mouse that the trunk NC is able to give rise to endoneurial fibroblasts.<sup>26</sup>

### **Pathways and molecular control of NCC migration**

The early specification of the NC from the neural plate depends on the function of both soluble growth factors and regulatory genes, the relative influences of which have been reviewed elsewhere.<sup>27-30</sup> Soon after NC formation, NCCs undergo an epithelium to mesenchyme transition and acquire the ability to navigate along complex paths.<sup>6</sup> A number of molecules are known to participate in NCC delamination and migration such as cadherins, Rho GTPases, Noggin and molecules of the extra-cellular matrix (ECM).<sup>31-34</sup>

The routes through which NCCs navigate, have been mostly characterized in the avian embryo.<sup>6</sup> In the trunk region, NCCs follow two main patterns of migration, which differ spatio-temporally. First, NCCs of the dorso-ventral migratory wave travel between the neural tube and the somites, through the anterior half of each somite as well as between consecutive somites. These cells will give rise to most of the PNS by coalescing to form the dorsal root ganglia (DRG) and, more ventrally, the sympathetic ganglion chains and the adrenal medulla. Second, a late-emigrating population of NCCs stays in the so-called '*migration staging area*'<sup>35</sup>, circumscribed by the neural tube, the superficial ectoderm and the dorso-medial somite. When the dermatome becomes individualized, these NCCs take a medio-lateral route, penetrating the dermomyotome beneath the superficial ectoderm. These cells, which become committed to the melanocyte lineage, are fated to give rise to the pigment cells of the skin and feathers.<sup>6</sup>

In the cephalic region, the migration pathways and target sites of NCCs have been mapped along the antero-posterior axis.<sup>36,37</sup> See refs. 6 and 38 for additional references. Although the formation and emigration of NCCs is basically unsegmented along the dorsal hindbrain as it is in the trunk, NCCs adopt a stereotypic migratory pattern along three main streams.<sup>39-42</sup>

Therefore the NCCs that migrate from the various levels of the neural axis, are rapidly patterned by their environment. At the trunk level, the migratory pattern of NCCs is closely correlated with somitic development. The migration of NCCs can take place only in the rostral half of each somite, whereas its caudal half is inhibitory to the penetration of both NCCs and growth cones from the motoneurons. The segmental origin of NC progenitors of the DRG was described in an elegant series of experiments where small fragments of the quail neural primordium were grafted orthotopically in chick embryos.<sup>43</sup> These experiments showed that the NCCs facing two consecutive somites participate in the formation of each DRG (**Fig. 2A**). Moreover, the NCC migration and DRG formation are perturbed subsequently to replacement of contiguous somites by either multiple rostral or multiple caudal somitic halves. If a succession of rostral somitic halves is created, a continuous and giant ganglion forms. In contrast, following grafting of multiple caudal somitic halves, the NCCs give rise to very small, dorsally located ganglia with irregular segmentation.<sup>44</sup> Therefore, the normal morphogenesis and segmentation of the DRG depend upon the integrity of the rostro-caudal succession of somitic regions (**Fig. 2B**).

The mechanisms that direct NCCs to the appropriate migration pathways and how NCCs interpret external signals into different locomotion behaviours start to be understood. Time-lapse confocal imaging in intact chicken embryos has allowed the cell-cell interactions between individual migratory NCCs and their motile behaviour at trunk and cephalic levels to be visualized.<sup>45-48</sup>

NCCs whose individualization results from proteolytic activity<sup>19</sup> guided by both inhibitory and permissive cues that they encounter en route. These cues modify the expression and activity of integrins and cadherins responsible for intercellular detachment, cytoskeletal changes and cell motility.<sup>49-51</sup>

Signals permissive for NCC migration are provided by basal lamina and several ECM components, such as fibronectin,<sup>52</sup> laminin, collagens, thrombospondin and hyaluronic acid (reviewed by Perris and Perissinotto).<sup>32</sup> Inhibitory molecules expressed in particular regions of the embryo impair invasion by NCCs, such as chondroitin sulfate proteoglycans in the perinotocordal mesenchyme. In the caudal somite, F-spondin<sup>53</sup> and lectin-binding glycoproteins<sup>54</sup> can function as a barrier for NCCs and thus participate in segmentation of the NC migratory streams in the trunk.

Recent studies have uncovered the role in directing NCC migration of secreted proteins originally characterized for their function in axonal guidance such as Ephrin, class III

Semaphorin, Slit and Netrin families of ligands, which transduce repulsive or attractive signals through interactions with the cognate receptors expressed by NCCs.

Ephrins-B ligands expressed in the caudal somite act as repulsive signals to restrict trunk NCC migration to the anterior somite and the dorso-ventral pathway.<sup>55-57</sup> However, at a later stage, NCCs switch their response to Ephrins-B, which then act as positive cues required for the lateral migration of presumptive melanocytes.<sup>57</sup> Other inhibitory elements supplied by the epithelial dermatome include secreted Slit proteins, which interact with Robo receptors expressed by early NCCs to confine them to the dorso-ventral pathway.<sup>58</sup> Slit 2 produced by the splanchnic mesenchyme repels trunk but not vagal migratory NCCs, inhibiting the former cell population to invade the gut.<sup>59</sup>

Recent grafting experiments to perturb the spatio-temporal relationships between the NCC medio-lateral migration and dermis formation have suggested that the emerging dermatome supplies a long-range diffusible attractant to stimulate NCC entry into the dorsal path.<sup>60</sup> In other regions as well, NCCs may display chemotactic responses to growth factors such as Fibroblast growth factor 2 (FGF2) in the mesencephalon.<sup>61</sup> Glial cell line-derived neurotrophic factor (GDNF) peptide is chemoattractant to NC enteric precursors that express Ret tyrosine kinase receptor during colonisation of the gut.<sup>62,63</sup> At later stages of ENS development, Netrins have been reported to attract the enteric nerve cells expressing the Netrin receptor DCC (for '*deleted in colorectal cancer*'), thus promoting the secondary formation of sub-mucosal and pancreatic ganglia.<sup>64</sup>

Semaphorin 3A, a secreted chemorepellent of class III Semaphorins, which signals *via* Neuropilin 1 receptor, plays a role not only in the patterning of the sympathetic innervation but is also required for the accumulation of neuronal precursors that form the sympathetic ganglia.<sup>65</sup> In addition, Semaphorin 3A reduces the migration area of trunk NCCs *in vitro*.<sup>66</sup> Semaphorin 3/Neuropilin 2 signalling has been suggested recently to play a crucial role in the segregation of hindbrain NCCs into migration streams in the chick<sup>67</sup> and zebrafish.<sup>68</sup> Semaphorins 3 however function in concert with other inhibitory signals to create crest-free zones in the mesenchyme adjacent to r3 and r5. Abnormal NCC invasion of these zones occurs in mice mutated for genes encoding Twist transcription factor<sup>69</sup> and ErbB4 receptor of Neuregulins.<sup>70,71</sup> This phenotype has been suggested to result from alterations of Ephrin-B/Eph receptors signalling. In particular, conditional mutation of *Ephrin-B1* in mouse NC has recently shown that Ephrin-B1 regulates NCC directional migration to craniofacial target tissues.<sup>72</sup>

### **The mesectoderm is at the origin of most head structures**

The crest-derived mesenchyme, which arises from the posterior diencephalic level, is destined to populate the upper facial primordia corresponding to the naso-frontal and naso-lateral buds (**Fig. 3A**). Mesencephalic and anterior rhombencephalic (r1-r2) NCCs fill up the branchial arch 1 (BA1). In the more caudal BAs, migration streams are delimited by several factors (see above) including by apoptotic foci of the cells in r3 and r5, which restrict the NCC scattering to a segmented pattern:<sup>36,37,39-41</sup> while r4-derived cells colonize BA2, NCCs that originate from r6 to r8 migrate into caudalmost BAs (BA3, BA4-6). Moreover, the final fate of these mesectodermal cells could be revealed thanks to the stability of the labelling provided by the chimeric quail-chick combination. The BA1 NCCs form the maxillo-mandibular skeleton while mesectodermal cells from the most posterior arches differentiate into the ventral part of the neck where they give rise to the hyoid bone<sup>6</sup> (**Fig. 3B**). In mammals, the NC is at the origin of mesenchymal cells in the dentine and the pulp of the teeth.

As a whole, the investigations carried out so far in the avian embryo have allowed the delimitation of the mesectodermal and mesodermal components of the skull (**Fig. 4A**). Ventrally, this limit corresponds to the rostral end of the notocord between the basipost and the basisphenoid, both forming the *Sella turcica* on which the pituitary gland sits (**Fig. 4B**). Dorsally, the posterior mesectodermal limit was placed at the transition between the parietal and the occipital bones, the latter being mesoderm-derived.<sup>73</sup> The parietal itself differentiates late during embryogenesis and was primitively thought not to belong to the NC-derived skeleton.<sup>73,74</sup> An approach based on the expression of *Wnt1* in the neural fold of the mouse, has excluded the parietal bone from the NC-derived territory.<sup>9</sup> These results could however be due to the fact that the r1 NC, the main source of mesectoderm for building the parietal bone, does not express *Wnt1* (See ref. 10, online complementary information and our own unpublished observations). More investigations are required to ascertain the origin of the parietal bone in mammals.

Long-term fate maps established in the avian embryo have revealed differences in the ability of the NCCs to form the various types of skeletal tissues: yielding cartilage and endochondral bone appears as a ground property of the entire skeletogenic NC domain. In contrast, the ability to form membrane bones is restricted to its most rostral part, corresponding to NC derivatives of the naso-frontal and maxillo-mandibular processes. Striking is the fact that, as discussed below, this partition matches different molecular traits involving *Hox* gene expression.

### **The posterior limit of the NC-derived skeleton in mammals**

Labelling of the mammalian post-otic NC by taking advantage of the transgenic mice approach mentioned above, has provided novel information on the participation of the NCCs to the neck and shoulder skeleton.<sup>10</sup>

The neck region has been subjected to major changes during evolution from fish to terrestrial vertebrates, and the respective boundaries of NC and mesoderm contribution in the neck transition zone had not been previously investigated. According to the classical view,<sup>75,76</sup> the dermal bones of the forelimb girdles are of NC origin while their endochondral components are considered mesodermal. This so-called “*ossification model*” to account for either a NC or a mesoderm origin of the skeleton had however not been experimentally tested in any vertebrate.

As noticed by G. Koentges’ group, there are variations in the mode of ossification (either endochondral or dermal) of the shoulder bones in various organisms, whereas the pattern of neck muscle attachments on these bones is very conserved throughout evolution.<sup>10</sup> In fact, the origin of the muscle connective component and the attachment points of the muscles on the skeleton were shown to be similar in both cranial and trunk regions throughout the vertebrate phylum.<sup>37,77</sup> On this ground, Matsuoka et al.<sup>10</sup> have proposed a competing model according to which morphogenesis of the bones in various forms of vertebrates has obeyed constraints imposed by a strict muscle attachment scaffold. This idea is based upon the homologies that can be drawn concerning the relationships that exist between the muscles and bones in the head and neck regions of different vertebrates. It was found that the cellular distributions of NC and mesoderm correspond to the muscle attachment scaffold rather than to the type of ossification of the bones: if the muscle connective tissue is of NC origin, its attachment site on a given bone will be made up of NC-derived cells, irrespective of whether the bone is of dermal or endochondral type.<sup>10</sup>

Thus in mouse, the post-otic NC extends to the anterior lining of the shoulder girdle at the sites where the trapezius muscle is fixed, whose connective component is of NC origin. The post-otic NCCs undergo dermal ossification of the anterior clavicle and form

endochondral bone at the insertion of branchial muscles (i.e. sternocleidomastoid and the fascia of omohyoid).<sup>10</sup> Generally speaking, the branchial muscles that have a NC connective component extend their attachment site to NC-derived bone in all skeletal structures of the neck and shoulder regions. However, in the cervical vertebra whose body and neural arches are somitic in origin,<sup>73</sup> the NC contribution is cryptic since it is limited to spots in the spinal process, which correspond to muscle attachment sites.

Similar results had been obtained for the attachment of the cleidohyoid muscle on the medial part of the clavicle of birds by McGonnell and coworkers<sup>78</sup> through the use of several NCC labelling procedures. It is noticeable that the scapula was found to be entirely mesoderm-derived in birds.<sup>79</sup>

### **Contribution of the mesectoderm to the cardio-vascular and peri-ocular structures**

As evoked above, the cephalic NC scaffolds the fascicular organization of the myogenic primordia derived from cephalic paraxial and somitic mesoderm; regarding the splanchnopleural mesoderm, NCCs play a similar role. The first insights of NCC contribution to conotruncal structures in vertebrates were gained from experiments using quail-chick chimeras. They demonstrated that mesectodermal cells nested in BAs 3 to 6 were lining the endothelial cells of the large aortic arteries (from brachiocephalic down to pulmonary arteries).<sup>80</sup> These results prompted Margaret Kirby and colleagues to further investigate the migration and fate of NCCs into the heart anlage and to question their functional role. It turned out that NCCs form the aorticopulmonary septum and the sigmoid valves.<sup>80-83</sup> This NCC distribution was later on generalized to mammals by transgenic approaches.<sup>81-85</sup> The large-scale defects in cardiac outflow tract septation recorded in the absence of the posterior rhombencephalic mesectoderm corresponding to the r6-r8 area of the neural fold, led Kirby and coworkers to put forward the notion of '*cardiac neural crest*'. This territory was shown to play an important role not only in its contribution to the heart anlage but also in regulating various aspects of the proliferation, differentiation and physiology of the cardiomyocytes.<sup>86,87</sup>

Long-term cell tracing investigations revealed for the first time the composite origin of the cephalic blood vessels.<sup>80</sup> Two notions came out from these observations. First, the endothelium was found to be of mesoderm origin all over the body. Later on, it was shown that the angiogenic lineage shares a common '*hemangioblastic*' precursor with hematopoietic cells.<sup>88</sup> These precursor cells can be early evidenced by expression of VEGFR2 (for '*vascular endothelial growth factor receptor 2*').<sup>88-90</sup> Second, cephalic blood vessels from the large arteries arising from the heart up to the very thin ramifications of cerebral capillaries of the vascular tree in the face and the anterior brain, are surrounded by cells of mesectodermal origin (**Fig. 5A-C**). NC provides the craniofacial and prosencephalic blood vessels with their media, meaning that these cells are locally induced to acquire pericyte and smooth muscle cell phenotypes<sup>80,91</sup> (**Fig. 5D**). In this respect, the ocular and peri-ocular region offers a unique site where the NC gives rise not only to the smooth muscles of the ciliary bodies but also to the striated muscle components of the iris.<sup>92</sup> Altogether, the variety of NC derivatives identified in the developing eye concurs in maintaining homeostasis of the anterior optic chamber and in endowing the vertebrate eye with refracting media (**Table 1**).



**Table 1***Origin of the avian ocular and peri-ocular structures*

<b>Ectoderm</b>	<b>Neural crest</b>	<b>Mesoderm</b>
Corneal epithelium Lens Iridial epithelium and lamella Pigmented and neural retina Eyelid epithelia	Corneal stroma and endothelium Iridial stroma and muscles Ciliary muscles Mesenchyme of ciliary corpus and process Wall of Schlemm's canal Sclero-corneal limbus Sclerotic ossicles Choroid membrane Sclerotic cartilage Muscles and mesenchyme of eyelids and nictitating membrane Mesenchyme of lacrimal gland Connective tissue of extra-ocular muscles Pericytes of ocular blood vessels Frontal, lacrimal, ethmoid, maxilla, zygomatic bones	Blood vessel endothelium Myofibers of extra- ocular muscles

***Hox* gene expression in the cephalic NCCs and their derivatives**

As first established in the mouse<sup>93</sup> and later confirmed in the chick,<sup>94,36</sup> the caudal domain of the cephalic NC (from r4 down to r8) expresses *Hox* genes of the first four paralogous groups, whereas in the rostral domain (from diencephalon down to r2), these *Hox* genes are not expressed. At the edge of both, NCCs from r3 exhibit a versatile *Hox*-status according to the environment into which they migrate. If r3 NCCs invade *Hox*-negative BA1, they lose *Hoxa2* expression while, if they migrate into *Hox*-positive BA2, they maintain it.

The evidence that *Hox* gene expression exerts a crucial influence on BA identity has been provided by seminal experiments based on gene targeting in mice: the null-mutation of *Hoxa2* generates the duplication of BA1-type skeleton (mandible) at the expense of BA2 hyoid bone structures.<sup>95,96</sup> By contrast, if *Hoxa2* expression is targeted to all BA1 tissues, a partial homeotic transformation of BA1 into BA2 is observed in the chick<sup>97</sup> and in *Xenopus*.<sup>98</sup>

The phenotype resulting from surgical extirpation of the anterior *Hox*-negative NC is the absence of the facial skeleton together with severe defects of forebrain and midbrain development<sup>99</sup> (**Fig. 6A,B**). If the *Hox*-expressing neural fold from r4 to r8 is heterotopically transplanted into the *Hox*-negative forehead environment, no regeneration of the skull and facial skeleton takes place. Despite their capacity to migrate and invade facial processes, *Hox*-expressing NCCs fail to form either cartilage or bone, and therefore are unable to substitute for *Hox*-negative NCCs in facial skeletogenesis<sup>100,101</sup> (**Fig. 6C,D**). A strikingly different result is obtained when the *Hox*-negative anterior domain of the NC (from mid-diencephalon down to r3 excluded) is replaced by small fragment of NC from either the posterior diencephalon, the mesencephalon or r1-r2 levels coming from a stage-matched quail. As shown in Figure 6 (**Fig. 6E,F**), the morphogenesis of the head and brain is rescued and all the NC-derived structures of the face are made up of quail cells.

Therefore, the *Hox*-positive NC cannot replace the *Hox*-negative domain to construct a facial skeleton. In addition, *Hox*-positive NCCs transplanted rostrally yield the PNS

derivatives corresponding to the level of their implantation but do not form any facial skeletal tissues. We have shown that the anterior *Hox*-negative domain is more plastic: when posteriorly transplanted, anterior *Hox*-negative NCCs are able to participate in the formation of the hyoid bone, thus adopting a fate corresponding to their new location.<sup>100,101</sup> Moreover, these NCCs are necessary for brain morphogenesis.

These experiments have demonstrated that the NC territory extending from the mid-diencephalon down to r2 (included) shows equivalent developmental potential whatever the level considered and thus its component cells behave as an 'equivalence group'. This implies that the anterior domain of the NC relies on environmental cues for patterning the facial skeleton.

### **Shifting rostrally the limit of *Hox* gene expression**

As previously mentioned, the NC ability to form skeletal tissues is not uniformly distributed along the cephalic neural axis since the *Hox*-expressing rhombencephalic NC is unable to yield facial skeleton.<sup>100,101</sup> That this trait could essentially rely on *Hox* gene expression was further investigated by forcing *Hox* gene activation in the anterior *Hox*-negative neural fold fated to yield facial skeleton.<sup>102</sup> If gain-of-function for *Hoxa2* is restricted to mesectodermal cells, *Hoxa2*-transfected embryos are utterly deprived of facial skeleton. On the other hand, forced expression of *Hoxa3* and *Hoxb4* promotes different phenotypes. While neither *Hoxa3* nor *Hoxb4* transfection affects NCC migratory properties, it strongly reduces their skeletogenic potential. In these embryos that have virtually no face, some rudimentary skeletal elements still develop in either the nasal bud (*Hoxa3*) or the mandibular bud (*Hoxb4*). According to the same paradigm, co-transfection of *Hoxa3* and *Hoxb4* completely abolishes the development of the facial skeleton.<sup>102</sup> This experiment therefore led to phenocopy of the facial defects resulting from the replacement of the endogenous *Hox*-negative NC by more posterior *Hox*-positive neural fold or from the ectopic activation of *Hoxa2* in the anterior neural fold.

Aside from skeletal defects, forced expression of *Hoxa3* was also detrimental to the differentiation of transfected mesectodermal cells into pericytes, causing lethal haemorrhages at the head level.<sup>102</sup> Together with the effects of *Hoxa3* null mutation in mice, these data show that *Hoxa3* plays an essential role in patterning the cardio-vascular system.<sup>103-105</sup>

Altogether, these experiments show that *Hox* gene gain-of-function by the rostral NCCs prevents the formation of the skeletal (and, for *Hoxa3*, the vascular) apparatus. It thus appears that the *Hox*-free rostral domain of the neural fold is the site of striking diversity of NC-derived structures.

### **Patterning the facial skeleton by the pharyngeal endoderm**

In lower vertebrates, tissue associations in organotypic culture have indicated that intimate contact between the NCCs and the pharyngeal endoderm is required for cartilage differentiation.<sup>106,107</sup> More recently, it has been put forward that skeletal morphogenesis relies on the pharyngeal segmentation. The absence of NC did not significantly perturb the early patterning of the pharyngeal endoderm.<sup>108</sup> Conversely, mutations affecting the endoderm resulted in aberrant organization of the BAs in zebrafish.<sup>109</sup> Recent studies have enlightened the synergistic effect of *Fgf3* and *Fgf8* genes in this process, by directing lateral progression of endodermal cells in order to sculpt the pharyngeal pouches.<sup>110</sup> Hence the segregation of NCC migratory flows into the BAs tightly depends on the early segmentation of the pharyngeal endoderm.<sup>109</sup>

Experiments carried out in the avian embryo have established the capacity of defined regions of the pharyngeal endoderm to convey instructive patterning cues to the NCCs during facial skeleton morphogenesis.<sup>101,111</sup> Extirpation of endodermal stripes at neurula stage results

in the disruption of pieces of the facial skeleton, which vary according to the level of the ablation (**Fig. 7A-C**). Reciprocally, grafting similar endodermal stripes into otherwise intact host embryos along the migration pathway of cephalic NCCs, induced predicted duplications of facial skeletal components (**Fig. 7D-F**). Moreover, changing the orientation of the grafted stripes accounted for modifying the polarity of the induced supernumerary skeletal pieces.<sup>101</sup> Therefore, the *Hox*-negative NC behaves as a naïve entity to which the ventral foregut endoderm confers patterning cues in order to specify the shape and spatial orientation of the maxillo-mandibular skeleton.

Later on, these results were extended to the formation of the hyoid bone that arises from both *Hox*-negative and *Hox*-positive NCCs.<sup>111</sup> Thus, the patterning ability of the more caudal levels of the pharyngeal endoderm (facing the mid- and posterior rhombencephalic structures in the neurula) to design the pharyngeal skeleton was demonstrated.

### **Role of the superficial facial ectoderm in shaping the face**

In the mouse, *Fgf8* gene inactivation in the BA ectodermal component impairs lower jaw development.<sup>112</sup> Moreover, isthmus-derived FGF8 has been shown to be involved in the patterning of the visceral skeleton.<sup>113</sup>

One of the striking and early consequences of the surgical extirpation of the anterior cephalic NC which is responsible for building up the entire facial skeleton (i.e. NCCs from the di-mesencephalon and r1-r2), is the strong down-regulation of *Fgf8* expression in the anterior neural ridge (ANR, i.e., the prosencephalic superficial and neural ectoderm) (**Fig. 8A,B**). Moreover, this operation totally suppresses *Fgf8* expression in BA ectoderm. As mentioned above, the phenotype resulting from surgical extirpation of the cephalic NC is the absence of facial skeleton together with severe defects of forebrain development (**Fig. 6A,B**). If, in this experimental system the endogenous protein is substituted for by exogenous FGF8, the NCCs from r3 (which normally provides only a few cells to BA1) entirely colonize BA1, induce *Fgf8* expression in BA1 ectoderm and generate a normal jaw skeleton (**Fig. 8C-G**). In addition, the NCCs, even if they belong to the *Hox*-positive posterior domain of the neural axis, induce *Fgf8* expression in the prosencephalic superficial and neural ectoderm. Restoration of *Fgf8* expression in the prosencephalon is followed by normal forebrain development.<sup>99</sup> Therefore, i) the cephalic NCCs are necessary for *Fgf8* expression by the epithelial ectodermal cells ii) in turn FGF8 exerts a strong proliferative effect on cephalic NCCs.

These experiments pointed out to the strong regeneration capacities of r3-derived NCCs and to the role of FGF8 in regulating NCC proliferation and migration. In addition, it has been proposed that, in mice, *Fgf8* expression by the superficial ectoderm specifies the mesectoderm to form either the mandible or the tooth germs and refines the position of the developing jaw joint.<sup>114,115</sup>

The ectoderm of the fronto-nasal process was also shown to play an important role in positioning and refining the shape of the upper beak. This effect is mediated by the two morphogens Sonic hedgehog (SHH) and FGF8, the expression domains of which abut in the frontonasal ectodermal zone, which plays a role in the growth of the underlying mesenchyme of NC origin.<sup>116,117</sup>

Signals emanating from the NCCs are also required for shaping the face. This has been demonstrated by recent experiments in which NCCs were orthotopically exchanged between embryos of quail and duck. These two species were chosen because they show different bill morphologies and develop according to different timings of incubation (17 days for the quail and 28 days for the duck). These experiments revealed that NCCs convey the timing for *Shh* and *Pax6* gene expression to the host ectoderm. NCCs thus impose a donor- rather than host-type molecular pattern for bill morphology.<sup>118</sup>

In similar experiments, Tucker and Lumsden<sup>119</sup> have further analysed the morphology of the quail cartilages that develop within the duck environment (and *vice-versa*). They found that the shape of the facial cartilages (e.g., the entoglossum and the retroarticular process which strikingly differ between the duck and quail) is always of NC donor-type.

Therefore, once induced by the endoderm to develop into a particular cartilage, NCCs follow a species-specific genetic programme involving a particular growth and morphogenetic pattern. Another important conclusion drawn from these studies is that the dermal ossification of mandibular bones follows a species-specific timing of differentiation.

**Thus, during facial morphogenesis, a temporally regulated and multi-step cross-talk occurs between the epithelia (endoderm and ectoderm) and the NCCs.**

### **Heterogeneity of progenitors and stem cells in the early NC**

The final phenotype adopted by NCCs depends mainly on local cues encountered by the cells during and at the end of their journey (See ref. 120 for a review). Single cell studies, essentially carried out *in vitro*, have revealed that migratory NCCs include highly pluripotent as well as oligopotent progenitors and fate-restricted precursors.<sup>121-127</sup> Some of the pluripotent and bipotent progenitors in the early NC have been shown to be stem cells endowed with self-renewal capacity.<sup>125,127</sup>

In the trunk NC, the pluripotent cells give rise *in vitro* to pigment cells, glial cells and PNS neurones as well as to myofibroblasts/smooth muscle cells expressing  $\alpha$ -smooth muscle actin ( $\alpha$ -SMA), the latter cell type arising from the NC only at the cephalic level in normal development.<sup>125,127, 128</sup>

Quail mesencephalic-rhombencephalic NCCs in culture generate mesectodermal derivatives such as chondroblasts and myofibroblasts.<sup>121-123,127</sup> Subsets of these NCCs exhibit the potential to develop into these mesenchymal as well as glial, neuronal and/or melanocytic cells, with diverse combinations of phenotypes. These cells however constitute a relatively small proportion (7%) of the clonogenic cephalic NCCs in our culture conditions.<sup>38</sup> Such progenitors, which give rise both to neural-melanocytic (trunk-like) and to mesenchymal (cephalic-like) NC derivatives, could be identified late in NC ontogeny, including the migratory stages, thus arguing against the contention that mesectoderm might be segregated from other NC lineages already in the dorsal neural primordium.<sup>129</sup> The existence of common progenitors for neurones, pigment cells, myofibroblasts and chondrocytes has been also shown in the posterior rhombencephalic NC of the quail<sup>130</sup> and the mouse.<sup>131</sup>

Altogether, these results support the emergence of diversified cell types from highly pluripotent NC stem cells, through the generation of various intermediate progenitors endowed with stem cell properties (**Fig. 9**).

### **Resident NC stem cells are present in differentiated tissues up to adulthood**

At post-migratory stages, pluripotent NC stem cells were identified in the PNS nerves, DRG and in the gut of fetal and postnatal rat.<sup>132-135</sup> These findings further document the results of previous *in vivo* back-transplantations of quail NC derivatives, wherein grafted PNS ganglia gave rise to migratory cells able to colonize new targets and to differentiate into alternative phenotypes in the chick host tissues.<sup>6</sup>

The ‘*boundary cap cells*’ of the dorsal root entry zone and motor exit points in the embryonic spinal cord were identified recently as a source of NC stem cells during neurogenesis.<sup>136,137</sup> These cells, which are derived from late-emigrating trunk NCCs, produce Schwann cells but also differentiate into subsets of sensory neurones and satellite glial cells in the mouse DRG, as shown by Cre-recombinase fate mapping using the *Krox20* locus.<sup>136</sup>

Moreover, mouse ‘*boundary cap cells*’ in clonal cultures comprise self-renewing progenitors for glia, sensory neurones and myofibroblasts.<sup>137</sup>

In the mammalian skin, progenitors isolated either from the dermal papillae<sup>138,139</sup> or the epidermal bulge area<sup>140,141</sup> of hair follicles, behave *in vitro* as pluripotent stem cells endowed with both neural and mesenchymal lineage potentials. Genetic tracing using *Wnt1-Cre* transgenic mice revealed that these progenitors are of NC origin. In the head region, the NCCs invade the presumptive skin early in mouse embryogenesis and comprise pluripotent stem cells, which thus persist up to adulthood in the vibrissae whisker follicles and may serve to regenerate multiple cell types during skin repair.

Therefore, a certain degree of differentiation plasticity and regeneration capacities characterize subsets of NC-derived cells long after PNS and skin organogenesis is completed. In mammals, the opportunity to prospectively isolate NC stem cell populations using cell surface markers combined with gene targeting mutations, allows further understanding the mechanisms of self-renewal<sup>142</sup> and maintenance of pluripotency.<sup>143,144</sup>

### **Plasticity of NC-derived phenotypes**

How the NC-derived phenotypes are specified and thereafter maintained in NC derivatives is still poorly understood. We have shown recently that pigment cells and Schwann cells can change their phenotype and convert into each other *in vitro* upon mitogenic stimulation by endothelin-3 (ET3) peptide.

Schwann cells isolated from quail embryonic nerves are capable of changing their lineage programme and generate pigment cells in long-term cultures supplemented with ET3.<sup>145</sup> In addition to melanocytes, these cells give rise to myofibroblasts, which are obtained in culture earlier than melanocytes and independently of the cytokine ET3.<sup>146</sup> Moreover, after transplantation into the BA1 of younger chick embryos, the Schwann cells spread into the host mesenchyme and generate myofibroblasts that are recruited to participate in the formation of the peri-vascular smooth muscle layer.<sup>146</sup>

The melanocyte phenotype also displays a high plasticity *in vitro*. Single pigment cells purified from the quail epidermis until hatching stage, are able to yield glial and myofibroblastic cells in addition to parental-like melanocytes, following exposure to ET3 (See ref. 147 and Real et al., submitted) (**Fig. 10**). This phenotypic reprogramming involves the dedifferentiation of dividing pigment cells into cells that re-express NC early transcription factors such as *Sox10*, *FoxD3*, *Pax3* and *Slug*. Single melanocytes were shown to generate multipotent progenitors able to self-renew along serial subcloning, thus exhibiting characteristic properties of stem cells. Some of these stem cells harbour the HNK1 cell surface marker that is expressed by early NCCs and which had been extinguished in the parental differentiated pigment cells (Real et al., submitted).

Therefore, when removed from their ‘*niche*’ and subjected to new environmental *in vitro* conditions, embryonic pigment cells and Schwann cells can reverse their differentiation programme and recapitulate early properties of their NC ancestors. These findings suggest that differentiated cell types derived from the NC are phenotypically unstable and capable of broad differentiation plasticity. In the skin and nerves, the dedifferentiated NCCs thus might be mobilized for tissue repair, alternatively or complementary to resident undifferentiated NC stem cells.

### **Concluding remarks**

During the last ten years, the NC has become a popular subject in cell and developmental biology. This is justifiable by the widely diversified interests offered by this system. First, in the group of chordates characterized by a common body plan, the NC is present only in vertebrates. It is considered to have been essential in the transition from cephalochordates to vertebrates since specific vertebrate traits within the chordate phylum such as skeletal tissues, PNS and spectacular head and brain development, are linked to the NC and its derivatives.

The first emphasis on the role of the NC in the evolution of chordates was brought about in a well-acknowledged article by Carl Gans and Glenn Northcutt in 1983.<sup>148</sup> These authors proposed that the NC, which gives rise to most of the skull, the meninges and the vascularization of forebrain and face (as revealed by embryological studies, see ref. 2 for references), was responsible for the formation of a '*New Head*' characterized by the spectacular development of the forebrain and associated sense organs. According to Gans and Northcutt, these attributes were related to a radical change in the life style of the vertebrates as compared to the cephalochordates: vertebrates became able to look for their food and even became predators, whereas the cephalochordates, like their extant form the *Amphioxus* (considered as closely related to the vertebrate ancestors), were filter-feeders. It is noticeable that the first organ of predation that appeared in vertebrates is the jaw, which is entirely NC-derived (see above).

In addition to its interest in vertebrate evolution, the NC is a system on which a large register of developmental problems can be studied in a privileged manner. As mentioned above, the NCCs are endowed of migratory properties and, in this respect they can be a model for studying the molecular mechanisms that regulate cell migrations which commonly occur in normal and pathological conditions.

The NC is a highly pluripotent structure. Several laboratories have demonstrated the presence of NC stem cells both in the embryo and in the adult derivatives of this structure. NCCs of birds and mammals can be cultivated *in vitro* and their plasticity was shown to be remarkable. A lot remains to be discovered, in terms of cytokines active on the various NC-derived lineages and of their mode of action in these well-defined experimental models.

Finally, by its ubiquitous ramifications all over the organism, the PNS is critical in coordinating the functions of various cellular components of the vertebrate body.

Many key problems remain to be investigated about the NC, among which, the genetic control of its formation in the embryo is particularly interesting owing to its possible evolutionary implications.

## Acknowledgements

The authors thank Michèle Scaglia for preparing the manuscript and Sophie Gournet for help in iconography. Work in authors' laboratory is supported by the Centre National de la Recherche Scientifique, Collège de France, Institut Curie and Association pour la Recherche contre le Cancer (grant n° 3149).

## References

1. His W. Untersuchungen über die erste Anlage des Wirbeltierleibes. Die erste Entwicklung des Hühnchens im Ei. Leipzig: FCW Vogel, 1868.
2. Le Douarin N. The Neural Crest. Cambridge: Cambridge University Press, 1982.
3. Hörstadius S. The neural crest: its properties and derivatives in the light of experimental research. London: Oxford University Press, 1950.
4. Le Douarin N. Particularités du noyau interphasique chez la Caille japonaise (*Coturnix coturnix japonica*). Utilisation de ces particularités comme "marquage biologique" dans les recherches sur les interactions tissulaires et les migrations cellulaires au cours de l'ontogenèse. Bull Biol Fr Belg 1969; 103:435-452
5. Le Douarin N. A biological cell labeling technique and its use in experimental embryology. Dev Biol 1973; 30:217-222.
6. Le Douarin NM, Kalcheim C. The Neural Crest. 2<sup>nd</sup> ed. New York: Cambridge University Press, 1999.
7. Danielian PS, Muccino D, Rowitch DH et al. Modification of gene activity in mouse embryos in utero by a tamoxifen-inducible form of Cre recombinase. Curr Biol 1998; 8(24):1323-1326.
8. Chai Y, Jiang X, Ito Y et al. Fate of the mammalian cranial neural crest during tooth and mandibular morphogenesis. Development 2000; 127(8):1671-1679.
9. Jiang X, Iseki S, Maxson RE et al. Tissue origins and interactions in the mammalian skull vault. Dev Biol 2002; 241(1):106-116.
10. Matsuoka T, Ahlberg P, Kessar N et al. Neural crest origins of the neck and shoulder. Nature 2005; 436:347-355.
11. Pietri T, Eder O, Blanche M et al. The human tissue plasminogen activator-Cre mouse: a new tool for targeting specifically neural crest cells and their derivatives in vivo. Dev Biol 2003; 259(1):176-187.
12. Wilkinson DG, Bailes JA, McMahon AP. Expression of the proto-oncogene int-1 is restricted to specific neural cells in the developing mouse embryo. Cell 1987; 50(1):79-88.
13. Davis CA, Joyner AL. Expression patterns of the homeo box-containing genes En-1 and En-2 and the proto-oncogene int-1 diverge during mouse development. Genes Dev 1988; 2(12B):1736-1744.
14. Molven A, Njolstad PR, Fjose A. Genomic structure and restricted neural expression of the zebrafish wnt-1 (int-1) gene. EMBO J 1991; 10(4):799-807.
15. McMahon AP, Joyner AL, Bradley A et al. The midbrain-hindbrain phenotype of Wnt-1-/Wnt-1- mice results from stepwise deletion of engrailed-expressing cells by 9.5 days postcoitum. Cell 1992; 69(4):581-595.
16. Wolda SL, Moody CJ, Moon RT. Overlapping expression of Xwnt-3A and Xwnt-1 in neural tissue of *Xenopus laevis* embryos. Dev Biol 1993; 155(1):46-57.
17. Echelard Y, Vassileva G, McMahon AP. Cis-acting regulatory sequences governing Wnt-1 expression in the developing mouse CNS. Development 1994; 120(8):2213-2224.

18. Szeder V, Grim M, Halata Z et al. Neural crest origin of mammalian Merkel cells. *Dev Biol* 2003; 253(2):258-263.
19. Valinsky JE, Le Douarin NM. Production of plasminogen activator by migrating cephalic neural crest cells. *EMBO J* 1985; 4(6):1403-1406.
20. Soriano P. Generalized lacZ expression with the ROSA26 Cre reporter strain. *Nat Genet* 1999; 21(1):70-71.
21. Mao X, Fujiwara Y, Chapdelaine A et al. Activation of EGFP expression by Cre-mediated excision in a new ROSA26 reporter mouse strain. *Blood* 2001; 97(1):324-326.
22. Lo L, Dormand EL, Anderson DJ. Late-emigrating neural crest cells in the roof plate are restricted to a sensory fate by GDF7. *Proc Natl Acad Sci USA* 2005; 102(20):7192-7197.
23. Gershon MD. *The Second Brain*. New York: Harper Collins, 1998.
24. Saxod R. Development of Merkel corpuscles in the chicken beak. The problem of their origin and identity. *Biol Cell* 1980; 7:61-66.
25. Saxod R. Ontogeny of the cutaneous sensory organs. *Microsc Res Tech* 1996; 34(4):313-333.
26. Joseph NM, Mukouyama YS, Mosher JT et al. Neural crest stem cells undergo multilineage differentiation in developing peripheral nerves to generate endoneurial fibroblasts in addition to Schwann cells. *Development* 2004; 131(22):5599-5612.
27. Kalcheim C. Mechanisms of early neural crest development: from cell specification to migration. *Int Rev Cytol* 2000; 200:143-196.
28. Nieto MA. The early steps of neural crest development. *Mech Dev* 2001; 105(1-2):27-35.
29. Knecht AK, Bronner-Fraser M. Induction of the neural crest: a multigene process. *Nat Rev Genet* 2002; 3(6):453-461.
30. Huang X, Saint-Jeannet JP. Induction of the neural crest and the opportunities of life on the edge. *Dev Biol* 2004; 275(1):1-11.
31. Duband JL, Monier F, Delannet M et al. Epithelium-mesenchyme transition during neural crest development. *Acta Anat* 1995; 154(1):63-78.
32. Perris R, Perissinotto D. Role of the extracellular matrix during neural crest cell migration. *Mech Dev* 2000; 95(1-2):3-21.
33. Sela-Donenfeld D, Kalcheim C. Inhibition of noggin expression in the dorsal neural tube by somitogenesis: a mechanism for coordinating the timing of neural crest emigration. *Development* 2000; 127(22):4845-4854.
34. Savagner P. Leaving the neighborhood: molecular mechanisms involved during epithelial-mesenchymal transition. *BioEssays* 2001; 23(10):912-923.
35. Erickson CA, Duong TD, Tosney KW. Descriptive and experimental analysis of the dispersion of neural crest cells along the dorsolateral path and their entry into ectoderm in the chick embryo. *Dev Biol* 1992; 151(1):251-272.
36. Couly G, Grapin-Botton A, Coltey P et al. The regeneration of the cephalic neural crest, a problem revisited: The regenerating cells originate from the contralateral or from the anterior and posterior neural fold. *Development* 1996; 122(11):3393-3407.
37. Koentges G, Lumsden A. Rhombencephalic neural crest segmentation is preserved throughout craniofacial ontogeny. *Development* 1996; 122(10):3229-3242.
38. Le Douarin NM, Creuzet S, Couly G et al. Neural crest cell plasticity and its limits. *Development* 2004; 131(19):4637-4650.
39. Lumsden A, Sprawson N, Graham A. Segmental origin and migration of neural crest cells in the hindbrain region of the chick embryo. *Development* 1991; 113(4):1281-1291.



40. Graham A, Heyman I, Lumsden A. Even-numbered rhombomeres control the apoptotic elimination of neural crest cells from odd-numbered rhombomeres in the chick hindbrain. *Development* 1993; 119(1):233-245.
41. Graham A, Francis-West P, Brickell P et al. The signalling molecule BMP4 mediates apoptosis in the rhombencephalic neural crest. *Nature* 1994; 372(6507):684-686
42. Wilkinson DG. Multiple roles of EPH receptors and ephrins in neural development. *Nat Rev Neurosci* 2001; 2(3):155-164.
43. Teillet MA, Kalcheim C, Le Douarin NM. Formation of the dorsal root ganglia in the avian embryo: segmental origin and migratory behavior of neural crest progenitor cells. *Dev Biol* 1987; 120(2):329-347.
44. Kalcheim C, Teillet MA. Consequences of somite manipulation on the pattern of dorsal root ganglion development. *Development* 1989; 106:85-93.
45. Kulesa PM, Fraser SE. Neural crest cell dynamics revealed by time-lapse video microscopy of whole embryo chick explant cultures. *Dev Biol* 1998; 204(2):327-344.
46. Kulesa PM, Fraser SE. *In ovo* time-lapse analysis of chick hindbrain neural crest cell migration shows cell interactions during migration to the branchial arches. *Development* 2000; 127(6):1161-1172.
47. Kulesa P, Ellies DL, Trainor PA. Comparative analysis of neural crest cell death, migration, and function during vertebrate embryogenesis. *Dev Dyn* 2004; 229(1):14-29.
48. Teddy JM, Kulesa PM. *In vivo* evidence for short- and long-range cell communication in cranial neural crest cells. *Development* 2004; 131(24):6141-6151.
49. Delannet M, Duband JL. Transforming growth factor-beta control of cell-substratum adhesion during avian neural crest cell emigration *in vitro*. *Development* 1992; 116(1):275-287.
50. Sela-Donenfeld D, Kalcheim C. Regulation of the onset of neural crest migration by coordinated activity of BMP4 and Noggin in the dorsal neural tube. *Development* 1999; 126(21):4749-4762.
51. de Melker AA, Desban N, Duband JL. Cellular localization and signaling activity of beta-catenin in migrating neural crest cells. *Dev Dyn* 2004; 230(4):708-726.
52. Rovasio RA, Delouvee A, Yamada KM et al. Neural crest cell migration: requirements for exogenous fibronectin and high cell density. *J Cell Biol* 1983; 96(2):462-473.
53. Debby-Brafman A, Burstyn-Cohen T, Klar A et al. F-Spondin, expressed in somite regions avoided by neural crest cells, mediates inhibition of distinct somite domains to neural crest migration. *Neuron* 1999; 22(3):475-488.
54. Krull CE, Collazo A, Fraser SE et al. Segmental migration of trunk neural crest: time-lapse analysis reveals a role for PNA-binding molecules. *Development* 1995; 121(11):3733-3743.
55. Krull CE, Lansford R, Gale NW et al. Interactions of Eph-related receptors and ligands confer rostrocaudal pattern to trunk neural crest migration. *Curr Biol* 1997; 7(8):571-580.
56. Wang HU, Anderson DJ. Eph family transmembrane ligands can mediate repulsive guidance of trunk neural crest migration and motor axon outgrowth. *Neuron* 1997; 18(3):383-396.
57. Santiago A, Erickson CA. Ephrin-B ligands play a dual role in the control of neural crest cell migration. *Development* 2002; 129(15): 3621-3632.
58. Jia L, Cheng L, Raper J. Slit/Robo signaling is necessary to confine early neural crest cells to the ventral migratory pathway in the trunk. *Dev Biol* 2005; 282(2):411-421.
59. De Bellard ME, Rao Y, Bronner-Fraser M. Dual function of Slit2 in repulsion and enhanced migration of trunk, but not vagal, neural crest cells. *J Cell Biol* 2003; 162(2):269-279.

60. Tosney KW. Long-distance cue from emerging dermis stimulates neural crest melanoblast migration. *Dev Dyn* 2004; 229(1):99-108.
61. Kubota Y, Ito K. Chemotactic migration of mesencephalic neural crest cells in the mouse. *Dev Dyn* 2000; 217(2):170-179.
62. Young HM, Hearn CJ, Farlie PG et al. GDNF is a chemoattractant for enteric neural cells. *Dev Biol* 2001; 229(2):503-516.
63. Iwashita T, Kruger GM, Pardal R et al. Hirschsprung disease is linked to defects in neural crest stem cell function. *Science* 2003; 301(5635):972-976.
64. Jiang Y, Liu MT, Gershon MD. Netrins and DCC in the guidance of migrating neural crest-derived cells in the developing bowel and pancreas. *Dev Biol* 2003; 258(2):364-384.
65. Kawasaki T, Bekku Y, Suto F et al. Requirement of neuropilin 1-mediated Sema3A signals in patterning of the sympathetic nervous system. *Development*. 2002; 129(3):671-680.
66. Eickholt BJ, Mackenzie SL, Graham A et al. Evidence for collapsin-1 functioning in the control of neural crest migration in both trunk and hindbrain regions. *Development* 1999; 126(10):2181-2189.
67. Osborne NJ, Begbie J, Chilton JK et al.. Semaphorin/neuropilin signaling influences the positioning of migratory neural crest cells within the hindbrain region of the chick. *Dev Dyn* 2005; 232(4):939-949.
68. Yu HH, Moens CB. Semaphorin signaling guides cranial neural crest cell migration in zebrafish. *Dev Biol* 2005; 280(2):373-385.
69. Soo K, O'Rourke MP, Khoo PL et al. Twist function is required for the morphogenesis of the cephalic neural tube and the differentiation of the cranial neural crest cells in the mouse embryo. *Dev Biol* 2002; 247(2):251-270.
70. Golding JP, Trainor P, Krumlauf R et al. Defects in pathfinding by cranial neural crest cells in mice lacking the neuregulin receptor ErbB4. *Nat Cell Biol* 2000; 2(2):103-109.
71. Golding JP, Dixon M, Gassmann M. Cues from neuroepithelium and surface ectoderm maintain neural crest-free regions within cranial mesenchyme of the developing chick. *Development* 2002; 129(5):1095-1105.
72. Davy A, Aubin J, Soriano P. Ephrin-B1 forward and reverse signaling are required during mouse development. *Genes Dev* 2004; 18(5):572-583.
73. Couly GF, Coltey PM, Le Douarin NM. The triple origin of skull in higher vertebrates : a study in quail-chick chimeras. *Development* 1993; 117:409-429.
74. Le Lièvre CS. Participation of neural crest-derived cells in the genesis of the skull in birds. *J Embryol Exp Morphol* 1978; 47:17-37.
75. Smith MM, Hall BK. Development and evolutionary origins of vertebrate skeletogenic and odontogenic tissues. *Biol Rev Camb Philos Soc* 1990; 65(3):277-373.
76. Smith MM, Hall BK. A developmental model for evolution of the vertebrate exoskeleton and teeth. In: Hecht M, MacIntire R, Clegg M, eds. *Evolutionary Biology*. Vol 27. New York: Plenum, 1993:277-373.
77. Hall BK. Development of the clavicles in birds and mammals. *J Exp Zool* 2001; 289(3):153-161.
78. McGonnell IM, McKay IJ, Graham A. A population of caudally migrating cranial neural crest cells: functional and evolutionary implications. *Dev Biol* 2001; 236(2):354-363.
79. Huang R, Zhi Q, Patel K et al. Dual origin and segmental organisation of the avian scapula. *Development* 2000; 127(17):3789-3794.
80. Le Lièvre C, Le Douarin NM. Mesenchymal derivatives of the neural crest : analysis of chimaeric quail and chick embryos. *J Embryol Exp Morph* 1975; 34:125-154.

81. Kirby ML, Stewart DE. Neural crest origin of cardiac ganglion cells in the chick embryo: identification and extirpation. *Dev Biol* 1983; 97:433-443.
82. Kirby ML, Gale TF, Stewart DE. Neural crest cells contribute to normal aorticopulmonary septation. *Science* 1983; 220(4601):1059-1061.
83. Kirby ML, Turnage KL, Hayes BM. Characterization of conotruncal malformations following ablation of "cardiac" neural crest. *Anat Rec* 1985; 213:87-93.
84. Epstein JA. Pax3, neural crest and cardiovascular development. *Trends Cardio Med* 1996; 6(8):255-260.
85. Jiang X, Rowitch DH, Soriano P et al. Fate of the mammalian cardiac neural crest. *Development* 2000; 127(8):1607-1616.
86. Creazzo TL, Godt RE, Leatherbury L et al. Role of cardiac neural crest cells in cardiovascular development. *Annu Rev Physiol* 1998; 60:267-286.
87. Waldo K, Zdanowicz M, Burch J et al. A novel role for cardiac neural crest in heart development. *J Clin Invest* 1999; 103(11):1499-1507.
88. Eichmann A, Corbel C, Nataf V et al. Ligand-dependent development of the endothelial and hemopoietic lineages from embryonic mesodermal cells expressing vascular endothelial growth factor receptor 2. *Proc Natl Acad Sci USA* 1997; 94(10):5141-5146
89. Eichmann A, Marcelle C, Bréant C et al. Two molecules related to the VEGF receptor are expressed in early endothelial cells during avian embryonic development. *Mech. Dev* 1993; 42(1-2):33-48.
90. Eichmann A, Marcelle C, Bréant C et al. Molecular cloning of Quek 1 and 2, two quail vascular endothelial growth factor (VEGF) receptor-like molecules. *Gene* 1996; 174(1):3-8.
91. Etchevers HC, Vincent C, Le Douarin NM et al. The cephalic neural crest provides pericytes and smooth muscle cells to all blood vessels of the face and forebrain. *Development* 2001; 128(7):1059-1068.
92. Creuzet S, Vincent C, Couly G. Neural crest derivatives in ocular and periocular structures. *Int J Dev Biol* 2005; 49(2-3):161-171.
93. Hunt P, Gulisano M, Cook M et al. A distinct Hox code for the branchial region of the vertebrate head. *Nature* 1991; 353(6347):861-864.
94. Prince V, Lumsden A. *Hoxa-2* expression in normal and transposed rhombomeres: independent regulation in the neural tube and neural crest. *Development* 1994; 120(4):911-923.
95. Gendron-Maguire M, Mallo M, Zhang M et al. *Hoxa-2* mutant mice exhibit homeotic transformation of skeletal elements derived from cranial neural crest. *Cell* 1993; 75(7):1317-1331.
96. Rijli FM, Mark M, Lakkaraju S et al. A homeotic transformation is generated in the rostral branchial region of the head by disruption of *Hoxa-2*, which acts as a selector gene. *Cell* 1993; 75(7):1333-1349.
97. Grammatopoulos GA, Bell E, Toole L et al. Homeotic transformation of branchial arch identity after *Hoxa2* overexpression. *Development* 2000; 127(24):5355-5365.
98. Pasqualetti M, Ori M, Nardi I et al. Ectopic *Hoxa2* induction after neural crest migration results in homeosis of jaw elements in *Xenopus*. *Development* 2000; 127(24):5367-5378.
99. Creuzet S, Schuler B, Couly G et al. Reciprocal relationships between *Fgf8* and neural crest cells in facial and forebrain development. *Proc Natl Acad Sci USA* 2004; 101(14):4843-4847.
100. Couly G, Grapin-Botton A, Coltey P et al. Determination of the identity of the derivatives of the cephalic neural crest: incompatibility between *Hox* gene expression and lower jaw development. *Development* 1998; 125(17):3445-3459.

101. Couly G, Creuzet S, Bennaceur S et al. Interactions between Hox-negative cephalic neural crest cells and the foregut endoderm in patterning the facial skeleton in the vertebrate head. *Development* 2002; 129(4):1061-1073.
102. Creuzet S, Couly G, Vincent C et al. Negative effect of Hox gene expression on the development of the neural crest-derived facial skeleton. *Development* 2002; 129(18):4301-4013.
103. Chisaka O, Capecchi MR. Regionally restricted developmental defects resulting from targeted disruption of the mouse homeobox gene *hox-1.5*. *Nature* 1991; 350(6318):473-479.
104. Lufkin T, Dierich A, LeMeur M et al.. Disruption of the *Hox-1.6* homeobox gene results in defects in a region corresponding to its rostral domain of expression. *Cell* 1991; 66(6):1105-1119.
105. Manley NR, Capecchi MR. The role of *Hoxa-3* in mouse thymus and thyroid development. *Development* 1995; 121(7):1989-2003.
106. Drews U, Kocher-Becker U, Drews U. Die Induktion von Kiemenknorpel aus Kopfnuralleistenmaterial durch präsumptiven Kiemendarm in der Gewebekultur und das Bewegungsverhalten der Zellen während ihrer Entwicklung zu Knorpel. *Roux' Arch* 1972; 171(1):17-37.
107. Epperlein HH. The ectomesenchymal-endodermal interaction-system (EEIS) of *Triturus alpestris* in tissue culture. I. Observations on attachment, migration and differentiation of neural crest cells. *Differentiation* 1974; 2(3):151-168.
108. Veitch E, Begbie J, Schilling TF et al. Pharyngeal arch patterning in the absence of neural crest. *Curr Biol* 1999; 9(24):1481-1484.
109. Piotrowski T, Nusslein-Volhard C. The endoderm plays an important role in patterning the segmented pharyngeal region in zebrafish (*Danio rerio*). *Dev Biol* 2000; 225(2):339-356.
110. Crump JG, Maves L, Lawson ND et al. An essential role for Fgfs in endodermal pouch formation influences later craniofacial skeletal patterning. *Development* 2004; 131(22):5703-5716.
111. Ruhin B, Creuzet S, Vincent C et al. Patterning of the hyoid cartilage depends upon signals arising from the ventral foregut endoderm. *Dev Dyn* 2003; 228:239-246.
112. Trumpp A, Depew MJ, Rubenstein JLR et al. Cre-mediated gene inactivation demonstrates that FGF8 is required for cell survival and patterning of the first branchial arch. *Genes Dev* 1999; 13:3136-3148.
113. Trainor PA, Krumlauf R. Hox genes, neural crest cells and branchial arch patterning. *Curr Opin Cell Biol* 2001; 13(6):698-705.
114. Tucker AS, Yamada G, Grigoriou M, Pachnis V et al. Fgf-8 determines rostral-caudal polarity in the first branchial arch. *Development* 1999; 126(1):51-61.
115. Wilson J, Tucker AS. Fgf and Bmp signals repress the expression of *Bapx1* in the mandibular mesenchyme and control the position of the developing jaw joint. *Dev Biol* 2004; 266(1):138-150.
116. Hu D, Marcucio RS, Helms JA. A zone of frontonasal ectoderm regulates patterning and growth in the face. *Development* 2003; 130(9):1749-1758.
117. Wu P, Jiang TX, Suksaweang S et al. Molecular shaping of the beak. *Science* 2004; 305(5689):1465-1466.
118. Schneider RA, Helms JA. The cellular and molecular origins of beak morphology. *Science* 24 2003; 299(5606):565-568.
119. Tucker AS, Lumsden A. Neural crest cells provide species-specific patterning information in the developing branchial skeleton. *Evol Dev* 2004; 6(1):32-40.

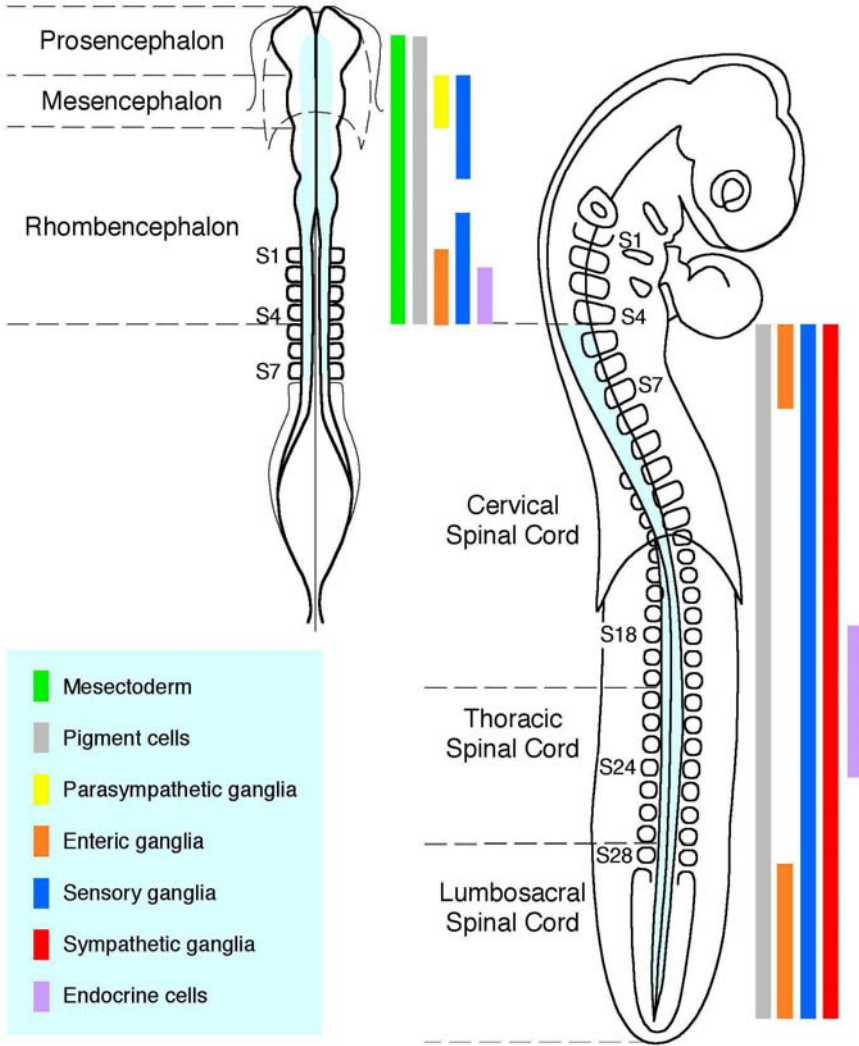
120. Le Douarin NM, Dupin E. Multipotentiality of the neural crest. *Curr Opin Genet Dev* 2003; 13(5):529-536.
121. Baroffio A, Dupin E, Le Douarin NM. Clone-forming ability and differentiation potential of migratory neural crest cells. *Proc Natl Acad Sci USA* 1988; 85(14):5325-5329.
122. Baroffio A, Dupin E, Le Douarin NM. Common precursors for neural and mesectodermal derivatives in the cephalic neural crest. *Development* 1991; 112(1):301-305.
123. Dupin E, Baroffio A, Dulac C et al. Schwann-cell differentiation in clonal cultures of the neural crest, as evidenced by the anti-Schwann cell myelin protein monoclonal antibody. *Proc Natl Acad Sci USA* 1990; 87(3):1119-1123.
124. Sieber-Blum M. Role of the neurotrophic factors BDNF and NGF in the commitment of pluripotent neural crest cells. *Neuron* 1991; 6:949-955.
125. Stemple DL, Anderson DJ. Isolation of a stem cell for neurons and glia from the mammalian neural crest. *Cell* 1992; 71(6):973-985.
126. Henion PD, Weston JA. Timing and pattern of cell fate restrictions in the neural crest lineage. *Development* 1997; 124(21):4351-4359.
127. Trentin A, Glavieux-Pardanaud C, Le Douarin NM et al. Self-renewal capacity is a widespread property of various types of neural crest precursor cells. *Proc Natl Acad Sci USA* 2004; 101(13):4495-4500.
128. Shah NM, Groves AK, Anderson DJ. Alternative neural crest cell fates are instructively promoted by TGF beta superfamily members. *Cell* 1996; 85(3):331-343.
129. Weston JA, Yoshida H, Robinson V et al. Neural crest and the origin of ectomesenchyme: neural fold heterogeneity suggests an alternative hypothesis. *Dev Dyn* 2004; 229(1):118-130.
130. Ito K, Sieber-Blum M. *In vitro* clonal analysis of quail cardiac neural crest development. *Dev Biol* 1991; 148(1):95-106.
131. Youn YH, Feng J, Tessarollo L et al. Neural crest stem cell and cardiac endothelium defects in the TrkC null mouse. *Mol Cell Neurosci* 2003; 24(1):160-170.
132. Morrison SJ, White PM, Zock C et al. Prospective identification, isolation by flow cytometry, and *in vivo* self-renewal of multipotent mammalian neural crest stem cells. *Cell* 1999; 96(5):737-749.
133. Hagedorn L, Suter U, Sommer L. P0 and PMP22 mark a multipotent neural crest-derived cell type that displays community effects in response to TGF-beta family factors. *Development* 1999; 126(17):3781-3794.
134. Bixby S, Kruger G, Mosher J et al. Cell-intrinsic differences between stem cells from different regions of the peripheral nervous system regulate the generation of neural diversity. *Neuron* 2002; 35(4):643-656.
135. Kruger G, Mosher J, Bixby S et al. Neural crest stem cells persist in the adult gut but undergo changes in self-renewal, neuronal subtype potential, and factor responsiveness. *Neuron* 2002; 35(4):657-669.
136. Maro GS, Vermeren M, Voiculescu O, et al. Neural crest boundary cap cells constitute a source of neuronal and glial cells of the PNS. *Nat Neurosci* 2004; 7(9):930-938.
137. Hjerling-Leffler J, Marmigere F, Heglind M et al. The boundary cap: a source of neural crest stem cells that generate multiple sensory neuron subtypes. *Development* 2005; 132(11): 2623-2632.
138. Toma JG, Akhavan M, Fernandes KJ et al. Isolation of multipotent adult stem cells from the dermis of mammalian skin. *Nat Cell Biol* 2001; 3(9):778-784.
139. Fernandes KJ, McKenzie IA, Mill P et al. A dermal niche for multipotent adult skin-derived precursor cells. *Nat Cell Biol* 2004; 6(11):1082-1093.

140. Sieber-Blum M, Grim M. The adult hair follicle: cradle for pluripotent neural crest stem cells. *Birth Defects Res* 2004; 72(2):162-172.
141. Sieber-Blum M, Grim M, Hu YF et al. Pluripotent neural crest stem cells in the adult hair follicle. *Dev Dyn* 2004; 231(2):258-269.
142. Molofsky AV, Pardal R, Iwashita T et al. Bmi-1 dependence distinguishes neural stem cell self-renewal from progenitor proliferation. *Nature* 2003; 425(6961):962-967.
143. Paratore C, Goerich DE, Suter U et al. Survival and glial fate acquisition of neural crest cells are regulated by an interplay between the transcription factor Sox10 and extrinsic combinatorial signaling. *Development* 2001; 128(20):3949-3961.
144. Kim J, Lo L, Dormand E, Anderson DJ. SOX10 maintains multipotency and inhibits neuronal differentiation of neural crest stem cells. *Neuron* 2003; 38(1):17-31.
145. Dupin E, Real C, Glavieux-Pardanaud C et al. Reversal of developmental restrictions in neural crest lineages: transition from Schwann cells to glial-melanocytic precursors *in vitro*. *Proc Natl Acad Sci USA* 29 2003; 100(9):5229-5233.
146. Real C, Glavieux-Pardanaud C, Vaigot P et al. The instability of the neural crest phenotypes: Schwann cells can differentiate into myofibroblasts. *Int J Dev Biol.* 2005; 49(2-3):151-159.
147. Dupin E, Glavieux C, Vaigot P et al. Endothelin 3 induces the reversion of melanocytes to glia through a neural crest-derived glial-melanocytic progenitor. *Proc Natl Acad Sci USA* 2000; 97(14):7882-7887.
148. Gans C, Northcutt RG. Neural crest and the origin of vertebrates. A new head. *Science* 1983; 220:268-274.

# Figure and legends

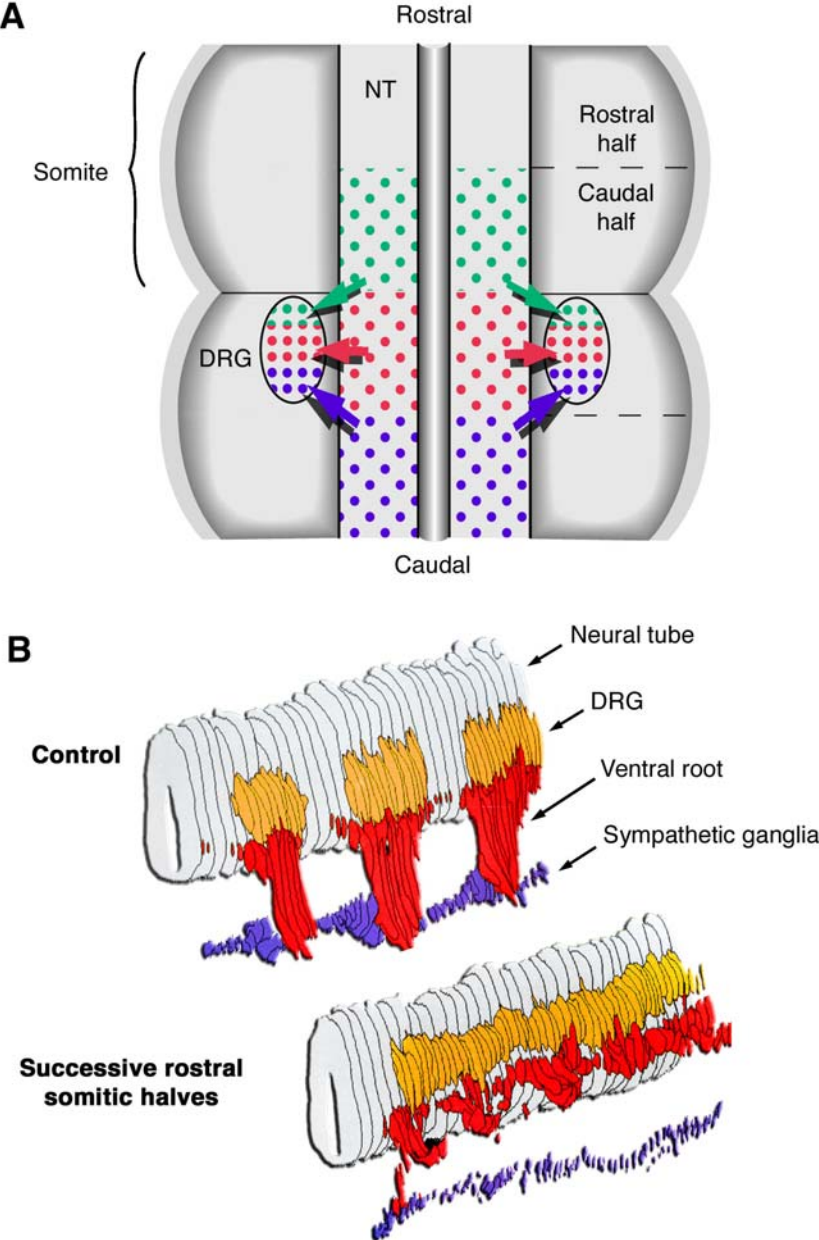
**Figure 1: Fate map of NC derivatives**

As established in the avian embryo<sup>38</sup>, the different phenotypes (see box) yielded by the cephalic (left panel) and the trunk (right panel) NC along the NCC-producing neural fold (shaded in light blue) are represented in 7- and 28 somite-stages embryos. S, somite.



**Figure 2: Segmental pattern of peripheral ganglia : influence of the somite**

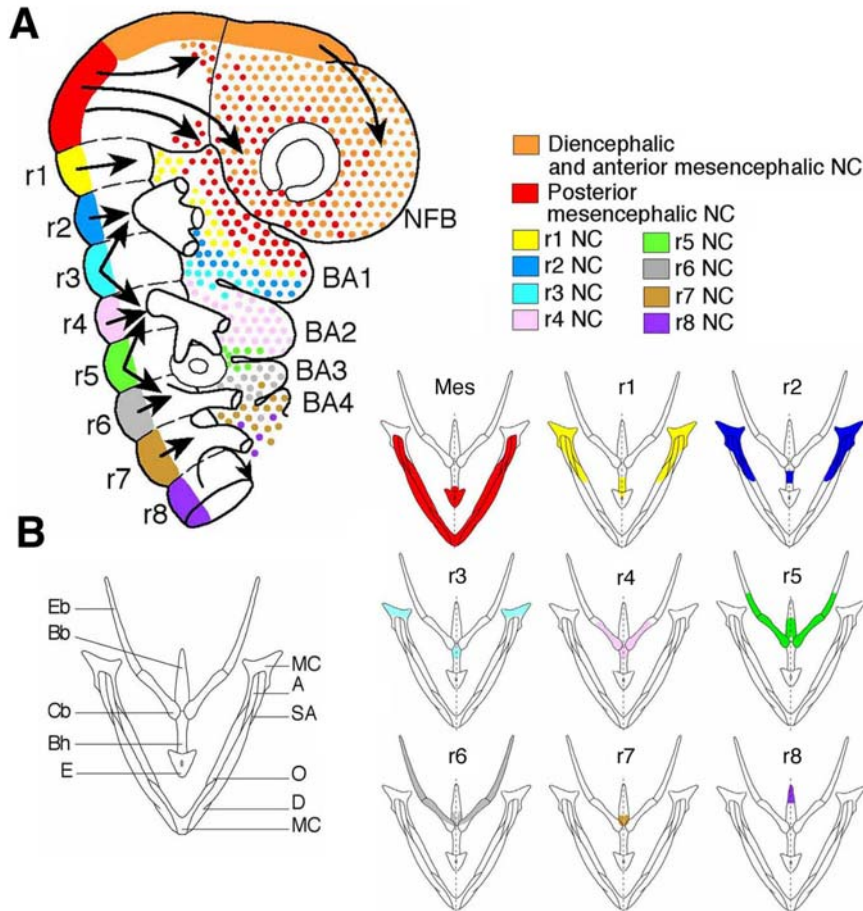
(A) Each dorsal root ganglion (DRG) forms opposite the rostral part of the somite and is colonized by NCCs migrating from the part of the neural tube (NT) facing the same somite (80% of DRG cells). NCCs corresponding to the caudal half of the preceding somite populate the rostral 20% of the DRG (adapted from ref. 43). (B) Three-dimensional reconstruction of the neural tube and peripheral nervous structures in E4.5 embryos<sup>6</sup>. In controls, the DRG, ventral roots and primary sympathetic ganglia are segmentally patterned. In embryos implanted with successive rostral somitic halves, NCCs generate a continuous dorsal polyganglion and yield unsegmented nerves and sympathetic ganglia.





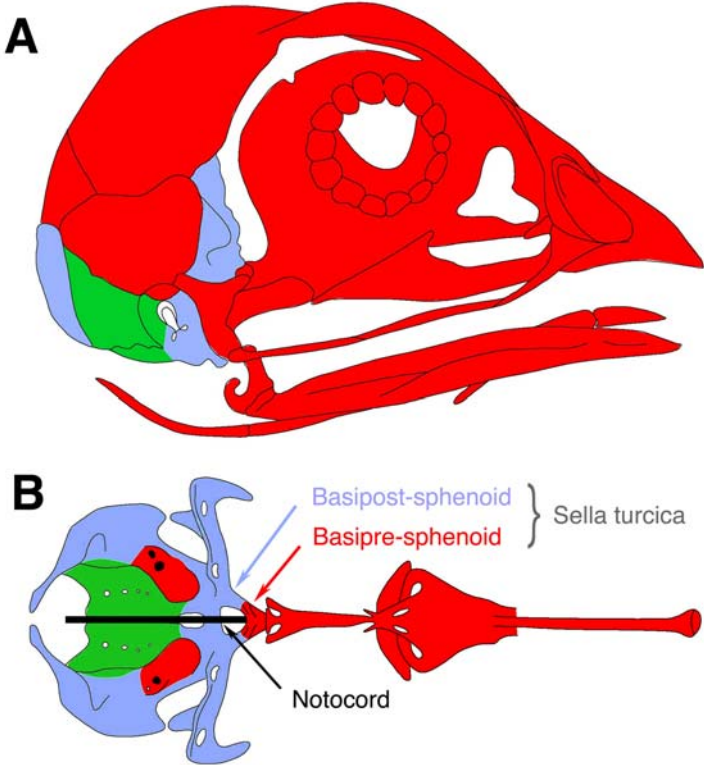
**Figure 3: Cephalic NCC migration and contribution to visceroskeleton**

(A) Migration streams of cephalic NCCs to the naso-frontal bud (NFB) and branchial arches (BA), according to their level of origin. (B) Composite origin of the maxillo-mandibular and hypobranchial skeleton (the level of NCC origin is colour-coded as in A). A, angular; Bb, basibranchial; Bh, basihyal; Cb, ceratobranchial; D, dentary; E, entoglossum; Eb, epibranchial; MC, Meckel's cartilage; Mes, mesencephalic level; O, opercular; r, rhombomere; SA, supra-angular.



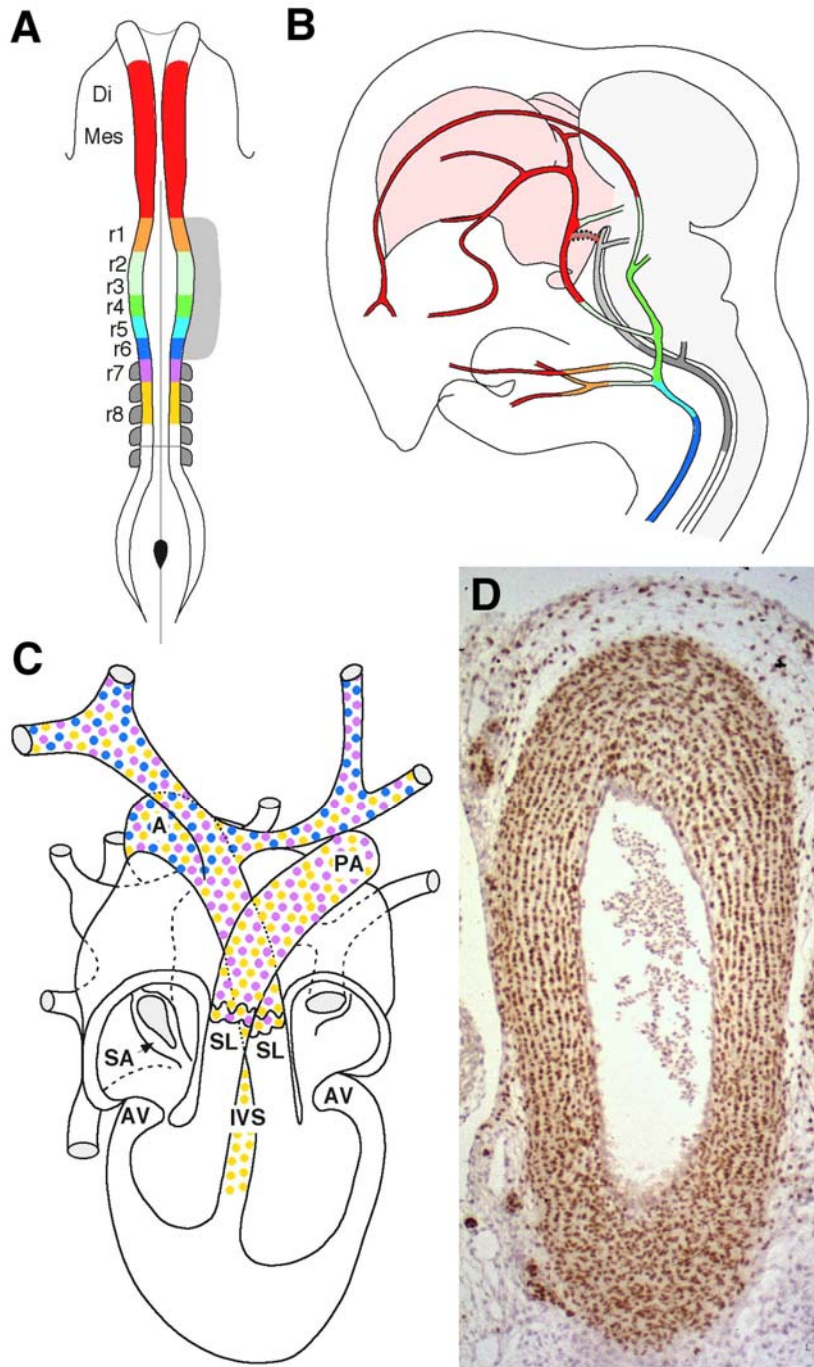
**Figure 4: Triple origin of the head skeleton**

(A) Contribution of the cephalic NC (red), cephalic paraxial mesoderm (blue), and somitic mesoderm (green) to the craniofacial skeleton at E14. (B) Ventral view of E10 chondrocranium showing the transition between the NC- and the mesoderm-derived skeleton.



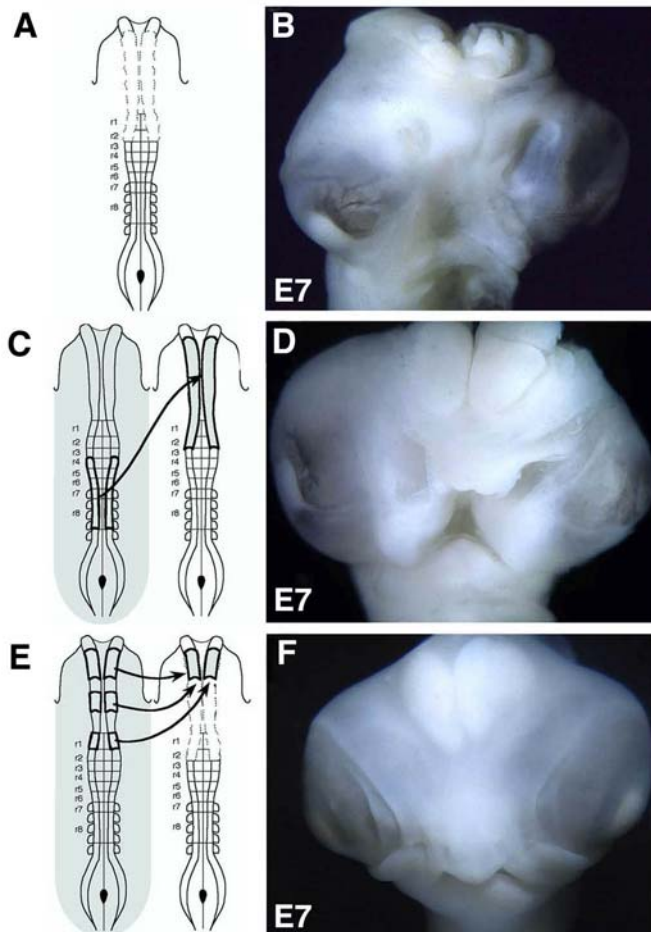
**Figure 5: Cephalic NCC contribution to the cardio-vascular system**

(A) Refined colour-coded cephalic neural fold of a 5 somite-stage chick embryo and NCC contribution to the musculo-connective wall of artery tree in the head. (B) Prosencephalic meninges (in pink) derive from the diencephalic and mesencephalic NCCs; from mesencephalon down to more caudal cephalic structures, meninges (in grey) are of mesoderm origin. (C) Contribution of the posteriormost rhombencephalic NCCs to the conotruncal structures of the heart. (D) NCCs form the musculo-connective wall of chimeric cephalic artery (QCPN immunoreactivity of quail rhombencephalic NCCs grafted into chick host embryo). A, aorta; AV, atrioventricular valve; IVS, intraventricular septum; PA, pulmonary artery; SA, sinoatrial valve; SL, semilunar valve.



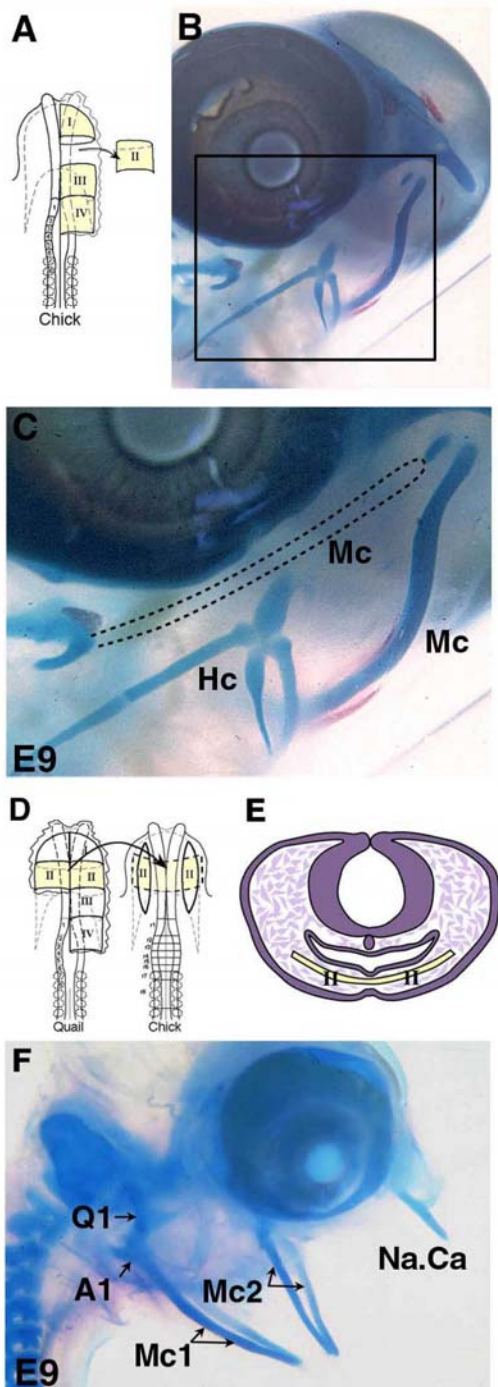
**Figure 6: Facial development relies on the *Hox*-negative NC**

(A) Removal of the *Hox*-negative NC in early chick neurula (dotted lines) results in absence of facial structures and exencephaly in E7 operated embryos (B). (C) Replacement of the anterior *Hox*-negative NC by an exogenous fragment of *Hox*-positive NC severely hampers head morphogenesis at E7 (D). (E) Following removal of the anterior *Hox*-negative NC (as in A), the implantation of only a fragment from either di-, mes- or anterior rhombencephalic level (i. e., *Hox*-negative NC) restores normal development of the face and forebrain at E7 (F).



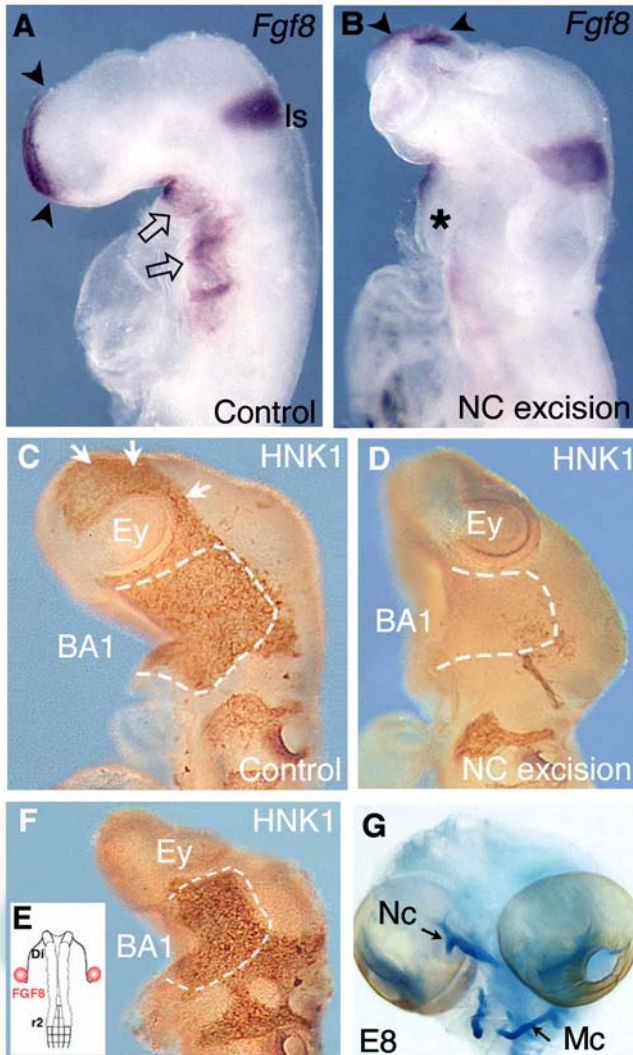
**Figure 7: The ventral foregut endoderm patterns the NC-derived skeleton**

(A) Unilateral surgical extirpation of the zone II of the ventral foregut endoderm (shaded in yellow) facing the anterior mesencephalon in chick embryo. (B) In E9 operated embryo, this extirpation leads to ipsilateral loss of Meckel's cartilage as evidenced on higher magnification (C; dotted line). Bilateral transplantation of endodermal zone II taken from a quail embryo (D) implanted ventrally to the endogenous ventral foregut of the host (E). (F) In E9 recipient embryo, the additional endodermal stripe has induced a supernumerary mandible (Mc2) interposed between the endogenous upper and lower jaws. A1, endogenous articular; Hc, Hyoid cartilage; Mc1, endogenous Meckel's cartilage; Na.Ca, nasal capsule; Q1, endogenous quadrate.



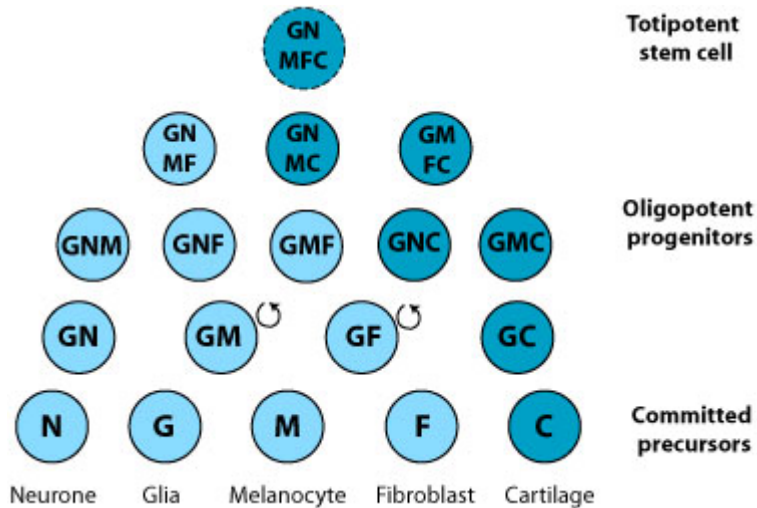
**Figure 8: Reciprocal interplay between NCCs and *Fgf8* expression by the superficial and neural ectoderm**

(A) In E3-control embryos, *Fgf8* is expressed in the anterior neural ridge (ANR; i. e. the prosencephalic superficial and neural epithelium; arrowheads), in the ectoderm lining BA1 (open arrows), and in the isthmus (Is). (B) Ablation of the *Hox*-negative NC entails a dramatic decrease of *Fgf8* expression in the ANR and BA1 ectoderm (\*) 24 hours after surgery. (C) In control embryos, the cephalic NCCs (HNK1 immunoreactivity) massively populate the forming BA1 (dotted line) and colonize the nasofrontal bud (arrows). (D) After *Hox*-negative NC excision, only rare HNK1-labelled NCCs are present in BA1. (E) Bilateral treatment of NC-excised embryos with FGF8 rescues the colonization of BA1 by r3-derived cells at E3 (F). (G) At E8, these embryos have developed a maxillo-mandibular skeleton.



**Figure 9: Model for the diversification of NC-derived lineages**

The progenitors identified in the quail NC by *in vitro* clonal cultures are classified according to their number of potentialities. Data<sup>122,127</sup> support a hierarchical model for lineage segregation, according to which progressive restrictions of a putative pluripotent stem cell (broken circle) give rise to oligopotent progenitors and finally to precursors committed to each of the main NC-derived phenotypes, namely, glia (G), neurones (N), melanocytes (M), myofibroblasts (F) and cartilage (C). All the progenitors able to yield cartilage (dashed circles) are present in the cephalic but not in the trunk NC. At least some of the oligopotent progenitors exhibit the ability to self-renew *in vitro* (curved arrows).



**Figure 10: Pigment cells generate multiphenotypic clonal progeny *in vitro***

(A) Culture of a single melanocyte from quail embryonic epidermis 4 hours after clonal seeding. (B) After 13 days in the presence of endothelin-3 (ET3), the melanocyte has generated a large colony with a highly pigmented core. (C, detailed view of B) The periphery of the colony comprises both unpigmented and pigmented cells. (D, E) Phenotypic analysis show that colony contains (D) melanoblasts and glial cells (immunoreactive to MeEM and SMP markers)<sup>147</sup> as well as (E) myofibroblasts (expressing  $\alpha$ -smooth muscle actin SMA). Bars : 100  $\mu$ m in A and E, 200  $\mu$ m in C and D, 1 mm in B.

