



HAL
open science

Microfluidic Exploration of the Phase Diagram of a Surfactant/Water Binary System

Jacques Leng, Mathieu Joanicot, Armand Ajdari

► **To cite this version:**

Jacques Leng, Mathieu Joanicot, Armand Ajdari. Microfluidic Exploration of the Phase Diagram of a Surfactant/Water Binary System. 2006. hal-00110623

HAL Id: hal-00110623

<https://hal.science/hal-00110623>

Preprint submitted on 31 Oct 2006

HAL is a multi-disciplinary open access archive for the deposit and dissemination of scientific research documents, whether they are published or not. The documents may come from teaching and research institutions in France or abroad, or from public or private research centers.

L'archive ouverte pluridisciplinaire **HAL**, est destinée au dépôt et à la diffusion de documents scientifiques de niveau recherche, publiés ou non, émanant des établissements d'enseignement et de recherche français ou étrangers, des laboratoires publics ou privés.

Microfluidic Exploration of the Phase Diagram of a Surfactant/Water Binary System

J. Leng^{+,†,*}, M. Joanicot⁺, A. Ajdari[†]

⁺*LOF, unité mixte CNRS/Rhodia/Bordeaux-I, 178 avenue du Dr Schweitzer, F-33608 Pessac Cedex, France.* [†]*Laboratoire Théorie et Microfluidique, UMR 7083 CNRS-ESPCI, 10 rue Vauquelin, F-75005 Paris, France.* * Corresponding author: jacques.leng-exterieur@eu.rhodia.com.

Abstract

We investigate the behaviour of a binary surfactant solution (AOT/water) as it is progressively concentrated in microfluidic evaporators. We observe in time a succession of phase transitions from a dilute solution up to a dense state, which eventually grows and invades the microchannels. Analyzing these observations, we show that, with a few experiments and a limited amount of material, our microdevices permit a semi-quantitative screening of the equilibrium phase diagram as well as a few kinetic observations.

While originally developed in the fields of pharmaceutical and biochemical industries (*via* combinatorial analysis, robotics, etc. [1,2]), high throughput screening has become a strategy of prime importance for activities requiring the formulation of multicomponents systems (food stuff, cosmetics, etc.) [3]. In this context, the parallelization of tests through the use of miniaturized devices (i.e. microfluidic chips) is an attractive avenue to increase productivity. We have recently introduced microevaporators (devices with integrated pervaporation) for the concentration of small volumes of aqueous solutions [4], and demonstrated the great level of control brought up by miniaturization on very dilute solutions, and in a study of the apparition and growth of crystals in a simple electrolyte (KCl) solution.

In this Letter we go one step further, and show that these devices permit the screening of the properties of more complex systems, here a binary surfactant/water mixture that exhibits

several phase transitions en route towards high concentrations. We indeed report below the successive occurrence of the *four* phases expected at equilibrium, and also out-of-equilibrium features related to the densification process. In particular, the concentration process leads eventually to the nucleation of a dense hexagonal phase which invades the microchannels. We show that this growth is limited by the solute supply, and thus controlled by the design and operation of the device. A quantitative analysis yields a determination of the density of the growing hexagonal phase in very good agreement with literature data.

Device, surfactant system, and experimental protocol - The microdevice used here (fig. 1) relies on identical principles but differs in design from those introduced in reference [4], with a *large evaporation area* (up to $\approx 5 \times 5$ cm) allowing a large number of experiments on the same chip. Now standard microfabrication techniques [5,6] are used to obtain two levels of channels in a two-layer poly(dimethylsiloxane) (PDMS) system. A set of 48 dead-end microchannels (thickness $h \sim 25 \mu\text{m}$), originating from a common reservoir, run over the membrane (a thin PDMS layer of thickness $e \sim 10 \mu\text{m}$), below which a wide channel allows removal of the water that permeates through this membrane. The channels have a gradually varying length L_0 overlying the membrane, which yields a *gradient of concentration rate* [4].

Indeed, if water permeates at a volumetric flow rate v_e through the bottom membrane, the compensating flow from the reservoir has an average velocity $v_0 = v_e L_0 / h$. If the reservoir is filled with a dilute solution at concentration c_0 the flux of solute in the microchannel is $j_0 = c_0 v_0$ and thus increases with L_0 . To estimate v_e for our device, we connect the reservoir to a transparent tubing of small inner diameter, fill the system with deionized (DI) water, turn evaporation on, and monitor the motion of

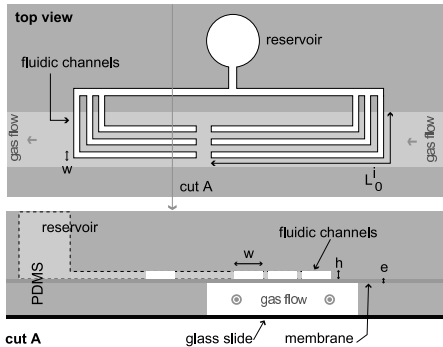


Figure 1: Schematic top and side views of the microevaporator. 2 sets of dead end channels of different lengths L_0 (face to face for design compactness) are connected to a reservoir and positioned above the gas channel (thickness ≈ 0.5 mm). The fluidic part is molded in PDMS and sealed with a $e \approx 10 \mu\text{m}$ thick PDMS membrane. In the real design there are 2×24 channels, with $h = 25 \mu\text{m}$, $w = 53 \mu\text{m}$, and L_0 between 3 and 18 mm).

the meniscus inside the tubing. From the *total* evaporation flux Q_e we deduce the *evaporation velocity* $v_e = Q_e/S_t$, where S_t is the total evaporation surface. We measure $v_e = 52 \pm 4$ nm/s. This sets the typical flow velocity $v_0 = \mathcal{O}(10 - 100 \mu\text{m/s})$, and an important time scale for the process $t_e = h/v_e = L_0/v_0 = 460 \pm 50$ s.

We use aqueous solutions of docusate sodium salt (AOT, $M_w = 444.56$ g/mol, density ≈ 1.1 g/mL, from Sigma-Aldrich, used as received), as this system displays many phases [7] with boundaries relatively insensitive to temperature in our working conditions $T = 25 \pm 2^\circ\text{C}$. A stock solution of AOT in DI water at (13.3 ± 0.1) mM is prepared by dilution and stirring at $T = 40^\circ\text{C}$; the transparent liquid is then left to equilibrate for several days. Further dilutions are prepared by adding DI water.

In a typical experiment, the microsystem is filled with a dilute surfactant solution at a concentration c_0 below its *cmc* (a solution of monomeric AOT), and left to evolve under steady evaporation. We monitor optically the evolution of the contents of the channels at *two different length scales*: High magnification optical microscopy with several contrasts to characterize the AOT mesophases, and wide-field observation using a stereo microscope equipped with a large-chip CCD camera to follow the growth kinetics. In both cases, time-lapsed video acquisition at a frequency of 0.1 Hz offers a sufficient temporal resolution on the time

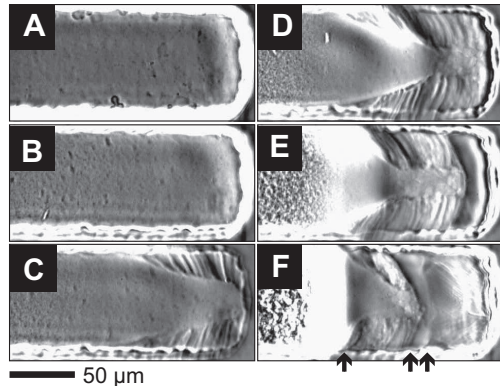


Figure 2: Time-lapsed microscopy of the densification of AOT in water at the tip of a microchannel (phase contrast; initial AOT concentration $c_0 \approx 13$ mM). A. $t = 500$ s: a *fluffy texture* of lamellar blobs and vesicles mostly close to the walls; B. $t = 1500$ s: densification of the fluffy texture at the tip yielding a neat structure; C. $t = 1750$ s: after nucleation of a mesophase from the sides of the tip; D. $t = 2000$ s: growth of this mesophase; E. $t = 2250$ s: nucleation of a new mesophase at the tip; F. $t = 2750$ s: band structure after the nucleation of a last phase (arrows indicate limits between successive textures).

scale of the processes we describe below (hours). *Kinetic generation of phases* - During the course of the experiment, several stages take place that are best viewed at high magnification (see also supplementary material). Starting from a perfectly transparent liquid, we first observe the occurrence of small and mobile objects ($< 5 \mu\text{m}$, fig. 2A, likely to be vesicles as they are not visible without phase contrast). Then, blobs and giant vesicle like structures grow *from the walls* (fig. 2A). They are also present in solution, some of them being teared away from the walls and advected towards the tip of the channel. This type of rough dispersion is typical of low solubility surfactants (lipids, AOT, ...) and is prone to kinetic effects [8,9]. The dispersion then progressively densifies, loosing at some stage its rough aspect (fig. 2B). Soonafter, a nucleation event occurs (fig. 2C): two slabs symmetrically grow from the corners of the channel's tip; they do not merge but join through *domains* typical of a *lamellar phase* (oily streaks and maltese crosses [10], fig. 2D). After another latency time, during which the lamellar slabs grow, a new phase shows up at the tip of the channel (fig. 2E). Eventually, a *final texture appears*, and grows "pushing" away a front bearing bands of the previously observed phases (fig. 2F).

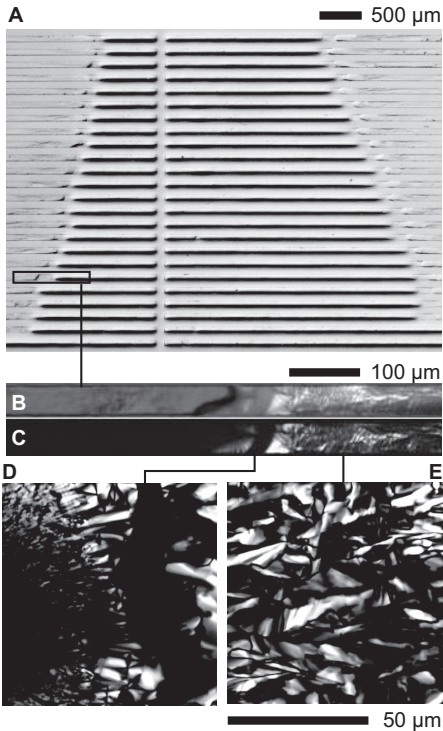


Figure 3: Overview of the growth kinetics. A: Large scale view of the parallelized device during the growth of the densest phase (the very contrasted zone) after ≈ 4 hours for an initial AOT concentration $c_0 = 13.3$ mM. The growth rate increases with channel length (the shortest is in the upper left, the longest is in the bottom right). B, C: Magnification of the front zone (B, partially crossed polarizers, C, totally crossed polarizers) between a fluffy texture and the dense phase, showing a *band structure* through birefringence properties of successive phases. D, E: higher magnification under crossed polarizers.

At a larger scale, only parts of the kinetics can be tracked: we monitor the occurrence of a fluffy texture over a finite channel length, which later collapses and the subsequent nucleation and growth of a dense phase, which has a deep and specific contrast in bright field view (fig. 3A). This picture clearly illustrates the link between channel length and growth rate: the longer, the quicker. Pictures B and C of fig. 3 show a magnification of the "band structure" of the growing front, observed under (partially and totally) crossed polarizers, with an alternation of *isotropic and birefringent bands*. With finer microscopy (fig. 3D and E), we observe typical textures of a lamellar phase (D) and a hexagonal phase (E).

This sequence of phases is perfectly compati-

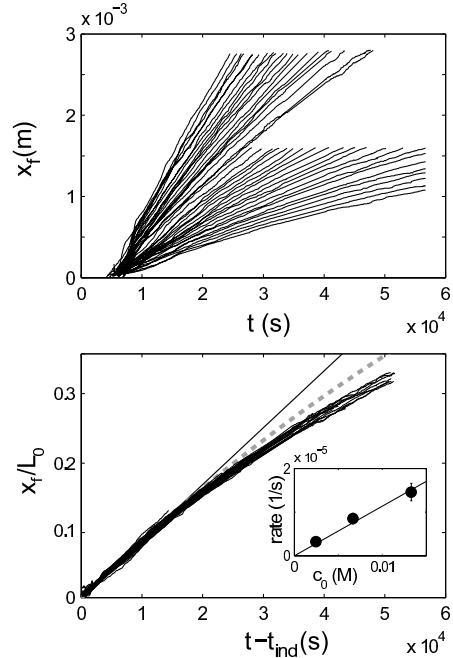


Figure 4: Top: front of the growing dense phase x_f against time, in 48 microchannels of different lengths L_0 . Bottom: same results for x_f/L_0 against reduced time (t_{ind} is the growth start time); Inset: initial slope \dot{x}_f/L_0 against reservoir concentration c_0 . The full and dashed lines are linear and exponential fits (see text).

ble with the AOT phase diagram, which consists of (increasing surfactant contents) a monomeric state, a lamellar, a cubic, and a hexagonal phase, with a large miscibility gap between the solution and the lamellar phase that reflects the very low solubility of AOT. We identify here three states (lamellar suspension, lamellar phase, hexagonal phase) out of four; the last one is a concentrated phase lying between the lamellar and the hexagonal phases, and is isotropic. The cubic phase of the phase diagram is a perfect candidate, but only *in situ* X-ray scattering could definitively assess it.

We thus infer that the surfactant accumulation process yields a *qualitative view on the phase diagram*, through the successive nucleation events and *the band structure* during the ultimate growth. Recall however that our experiments provide a kinetic view, a feature of prime importance for a correct mapping of the concentration kinetics onto the phase diagram.

Growth kinetics - We now show how analysis of the kinetics permits the quantitative determination of a phase boundary for this complex systems, applying a recipe successful for electrolyte

solutions [4].

We monitor systematically the eventual growth of the hexagonal phase with image processing. A single experiment provide 48 growth kinetics (fig. 4, top), noticeably dependent on the length of each channel L_0 . The growth rate increases with L_0 and decreases slightly with time. A remarkable collapse is obtained if the front position is normalized by the channel length L_0 (fig. 4, bottom). Performing experiments at different concentrations, we find the initial reduced growth rate \dot{x}_f/L_0 proportional to c_0 (inset of fig. 4, bottom). This assesses our operational control of the kinetics through both L_0 and c_0 .

This dependence is consistent with mass conservation, assuming that the growth is limited by the solute supply at $j_0 = c_0 v_0 = c_0 L_0 / t_e$ from the reservoir. If the dense phase grows at a fixed concentration c_d , a *constant* growth rate $\delta x_f / \delta t = (c_0 / c_d) L_0 / t_e$ is expected. Fitting this law to the early growth stage (thin solid line, fig. 4, bottom), and using our separate measurement of t_e , we get an estimate for the concentration of the newly born dense state: $c_d = 2.2 \pm 0.2$ M, or $84 \pm 8\%$ in mass of AOT, remarkably close to the lower bound of the hexagonal phase of AOT in water ($\approx 83\%$ [7]).

We also observe a progressive slowing down in the growth, and that eventually the dense state *does not grow beyond the evaporation zone*, which suggests that *evaporation from the dense phase is weak*. Assuming that is strictly zero leads an effective evaporation length $L(t) = L_0 - x_f(t)$ and a solute flux that decrease as the dense state grows, and predicts an exponential slowing down: $x_f(t)/L_0 = (1 - e^{-\frac{c_0}{c_d} \frac{t}{t_e}})$. This accounts for most but not all of the growth rate decrease (thick dashed line of fig. 4, bottom). Several factors may alter this simple exponential prediction. In particular, as the dense hexagonal phase exists over a range of concentrations ($\approx 80 \rightarrow 100\%$ AOT w/w), the corresponding band may grow more slowly because it becomes denser in time, possibly up to a pure AOT solid. Such a final densification is possible if a weak evaporation persists within the densest phase, inducing in this phase a permeation flow which generates osmotic compression.

Conclusion - For the *continuous screening* goal pursued here, microevaporators are powerful and accurate tools that offer a semi-quantitative description of a surfactant *phase*

diagram with a limited set of experiments, of material, and of analysis. The observed kinetic pathway of AOT concentration in water provides a general scenario for the densification mechanism: a journey towards high concentration, crossing on the way every state, and preserving this memory in the *band structure* of the concentration gradient during growth. This experimental control in the *manipulation of solute at small scale*—especially for its kinetic aspect—sets firm grounds for further studies of more complex mixtures, and of *kinetic aspects* of the concentration process and the intricate physics involved.

Acknowledgements - We thank *Région Aquitaine* for funding and support.

Supporting Information Available - Two videos showing the concentration process are supplied as supplementary material. This material is available free of charge via the Internet at <http://pubs.acs.org>.

References

- [1] A. N. Hobden and T. J. R. Harris. The impact of biotechnology and molecular-biology on the pharmaceutical-industry. *Proceedings of the Royal Society of Edinburgh Section B-Biological Sciences*, 99:37–45, 1992.
- [2] J. J. Burbaum and N. H. Sigal. New technologies for high-throughput screening. *Current Opinion in Chemical Biology*, 1(1):72–78, 1997.
- [3] S. R. Fletcher. High throughput approaches to designer products - myth or reality. *Colloids and Surfaces A-Physicochemical and Engineering Aspects*, 288(1-3):21–25, 2006.
- [4] J. Leng, B. Lonetti, P. Tabeling, M. Joanicot, and A. Ajdari. Microevaporators for the kinetic inspection of phase diagrams. *Physical Review Letters*, 96(8):084503, 2006.
- [5] G. M. Whitesides, E. Ostuni, S. Takayama, X. Y. Jiang, and D. E. Ingber. Soft lithography in biology and biochemistry. *Annual Review of Biomedical Engineering*, 3:335–373, 2001.
- [6] J. Goulpeau, D. Trouchet, A. Ajdari, and P. Tabeling. Experimental study and modeling of polydimethylsiloxane peristaltic micropumps. *Journal of Applied Physics*, 98(4), 2005.
- [7] J. Rogers and P. A. Winsor. The nature of the striated textures encountered with the middle (m1) and inverse middle (m2) liquid crystalline phases. relationships between the m1 phase of amphiphiles and the ordered solution phase of

- tobacco mosaic virus. *Journal of Colloid and Interface Science*, 30(4):500–510, 1969.
- [8] M. Buchanan, J. Arrault, and M. E. Cates. Swelling and dissolution of lamellar phases: Role of bilayer organization. *Langmuir*, 14(26):7371–7377, 1998.
- [9] J. Leng, S. U. Egelhaaf, and M. E. Cates. Kinetics of the micelle-to-vesicle transition: Aqueous lecithin-bile salt mixtures. *Biophysical Journal*, 85(3):1624–1646, 2003.
- [10] S. Chandrasekhar and G. S. Ranganath. The structure and energetics of defects in liquid-crystals. *Advances in Physics*, 35(6):507–596, 1986.