



HAL
open science

Ambient noise energy bursts observation and modelling: Trapping of harmonic structure-soil induced-waves in a topmost sedimentary layer.

Cécile Cornou, Philippe Gueguen, Pierre-Yves Bard, E. Haghshenas

► **To cite this version:**

Cécile Cornou, Philippe Gueguen, Pierre-Yves Bard, E. Haghshenas. Ambient noise energy bursts observation and modelling: Trapping of harmonic structure-soil induced-waves in a topmost sedimentary layer.. *Journal of Seismology*, 2004, 8 (4), pp.507-524. hal-00107887

HAL Id: hal-00107887

<https://hal.science/hal-00107887v1>

Submitted on 26 Oct 2006

HAL is a multi-disciplinary open access archive for the deposit and dissemination of scientific research documents, whether they are published or not. The documents may come from teaching and research institutions in France or abroad, or from public or private research centers.

L'archive ouverte pluridisciplinaire **HAL**, est destinée au dépôt et à la diffusion de documents scientifiques de niveau recherche, publiés ou non, émanant des établissements d'enseignement et de recherche français ou étrangers, des laboratoires publics ou privés.

Ambient noise energy bursts observation and modeling: trapping of harmonic structure-soil induced-waves in a topmost sedimentary layer

C. Cornou^{1,*}, P. Guéguen^{1,2}, P.-Y. Bard^{1,2} and E. Haghshenas^{1,3}

¹ Laboratoire de Géophysique Interne et Tectonophysique, Université Joseph Fourier, Grenoble, France

² Laboratoire Central des Ponts-et-Chaussées, Paris, France

³ International Institute of Earthquake Engineering and Seismology, Teheran, Iran

* now at Swiss Seismological Service, ETH Zürich, Switzerland

Journal of seismology, 2004, 8, 507-524.

Abstract. We study the nature of energy bursts that appeared in the frequency range 3-5 Hz in ambient seismic noise recorded in the Grenoble basin (French Alps) during a seismological array experiment. A close agreement is found between the identified azimuths of such noise bursts with the location of an industrial chimney. In-situ measurements of the chimney dynamic characteristics show a coincidence between the frequency of the first harmonic mode of the chimney and the fundamental frequency of a thin surficial layer that overlay the deep sediment fill. The interaction between the chimney and the surficial layer is then numerically simulated using simple impedance models, and two geotechnical profiles. Simulations exhibit a satisfactory agreement with observations and suggest that energy bursts result of inertial structure-soil interaction favored by resonance effects between the first harmonic mode of the structure and the fundamental frequency of the topmost layer.

Key-words: microtremors, site effects, structure-soil interaction, Hover V spectral ratio, urban ground motion

Introduction

Seismic ambient vibrations may be caused by natural or anthropic disturbances such as wind, sea waves, traffic, industrial machinery, etc. In this paper, we are interested in very specific energetic microtremor waveforms observed at various sites within the city of Grenoble, French Alps. These transient-like waveforms, later called noise bursts, have amplitude higher than the mean seismic noise level and propagate in the frequency range 3 - 5 Hz that does not correspond to the site fundamental resonance frequency near 0.3 Hz (Lebrun et al., 2001). We took advantage of a dense array of three-component seismometers installed during spring 1999 within the city for site effects purposes in order to address the origin and the nature of such noise energy bursts. We first describe the geophysical settings of the Grenoble basin and present the main characteristics of noise bursts. Then, array technique is applied to identify back-azimuth, frequency and apparent velocity of noise bursts. From these first results, the origin of the bursts is discussed and assumed as waves generated by the first higher mode of vibration of an industrial chimney. Simulation of the inertial soil-structure interaction is then carried out to confirm this interpretation.

Evidence of noise energy bursts in the Grenoble basin

Grenoble basin : geophysical parameters

The Grenoble basin displayed in Figure 1a is a 3D Y-shaped deep basin filled mostly with late quaternary post-glacial deposits overlaying Jurassic marls and a marly limestone substratum. A deep borehole drilled by the I.R.S.N. (Institut de Radioprotection et de Sûreté Nucléaire) in the NE-branch

of the valley hit the substratum at 532 m depth (Nicoud et al., 2002). Bouguer anomaly analysis of gravity measurements at more than 400 points (Vallon, personal communication) provided the substratum topography that fits at the borehole location with the substratum depth evaluated through seismic and borehole measurements (Nicoud et al., 2002). Logging operations performed in the borehole, as well as the investigation of contribution of vertical and offset seismic profiles show that the P-wave velocity varies between 1450 m/s and 2150 m/s, and the S-wave velocity, between 250 m/s and 950 m/s from the surface down to the bedrock (Cornou, 2002). Velocity profiles are displayed in Figure 1b. The S-wave velocity profile exhibits a lowest velocity value (250 m/s) within a 40 m thick surficial layer that induces a S-wave velocity contrast of about two with the underneath layer. This low S-wave velocity topmost layer was very recently confirmed through cuttings from a second borehole drilled nearby the previous one (Lemeille, *personal communication*) that have shown a major sands/clay contrast at 40 m depth. Besides these measurements, Lebrun et al. (2001) performed an extended H/V microzonation study based on Nakamura's method (Nakamura, 1989; see Bard, 1998 for a review of the method) within the area of Grenoble. They observed a resonance frequency of 0.3 Hz in the central part of the basin and another one, in some part of the city, near 3 Hz that they assigned to a resonance of a very surficial layer.

Noise energy bursts

An array composed of 29 three-component seismic sensors was installed in the city as indicated in Figure 2 and operated from February to May 1999. Sensors were arranged in concentric rings: 16 L22 Mark Products sensors (with a flat response between 2 and 50 Hz) were located in two inner rings with a maximum 80 m aperture, 12 wider band sensors (3 Lennartz Le3D-5s and 9 Guralp CMG40-20s, with a flat response from 0.2 and 0.05 to 50 Hz, respectively) were installed in a maximum 1 km aperture outer ring and one CMG40-20s sensor added in the center of the array. Sensor locations were precisely determined using static GPS measurements (precision of about 0.3

m). Sensors were connected either to Reftek-72A2 or to a Minititan-3XT recorder. These instruments are part of the portable Lithoscope and RAM mobile national networks ([http://www-lgit.obs.ujf-grenoble.fr/equipements-nat/equipement-nat.htm](http://www-<u>lgit.obs.ujf-grenoble.fr/equipements-nat/equipement-nat.htm</u>)). Data were continuously recorded, time synchronization was provided by continuous GPS receivers (time accuracy less than 1 ms) and the sampling rate was fixed to 125 Hz on each channel. Figure 3 displays examples of noise energy bursts and their corresponding Fourier spectra amplitude. A statistical study of the noise bursts has been performed over one week from the 1st to the 7th of February 1999, using four 2 hours-windows per day: noise energy bursts appear mainly during night within the 2 to 5 Hz frequency band, in relation with a low mean noise level during night. Over the whole 56h00 investigated period, 100 noise bursts have been identified with a mean duration of 25 s. Similar noise bursts propagating within the same frequency range were also observed throughout the eastern part of the basin from other dense array measurements of noise (Bettig et al., 2001, Cornou, 2002).

Noise bursts propagation parameters

In this study, a total of twelve hours of noise recordings have been considered (Table 1). First, we have detected noise bursts as follows: 1) signals are filtered between 2 and 6 Hz using a Butterworth filter; 2) for each of the three components, less stationary time windows are evaluated using a STA/LTA short term/long term trigger algorithm (STA = 1 s and LTA = 20 s); 3) only time windows exhibiting non-stationarity simultaneously on the three components are kept. Over these twelve hours of study, 63 noise bursts have thus been detected (Table 1). Next, the reallocated smoothed Wigner-Ville pseudo-spectrum time-frequency distribution is evaluated on the vertical component of noise bursts in order to sharply localize the energy of the signal in the time-frequency plane (Auger and Flandrin, 1995; Pedersen et al., 2002). Time-frequency points where phase is

stationary (ridges) are then extracted and we only kept those points location $(t_i, f_i)_{i=1,N}$, where N is the number of points of the ridges, that corresponds to the 40% most energetic part of the energy spectrum density (Figure 4). The so-called MUSIC algorithm (MUltiple SIgnal Characterization; Schmidt, 1981; Schmidt, 1986) array technique is then applied for characterizing the propagation parameters (apparent velocity, back-azimuth) of bursts. Since the array technique is reliable when sensor-to-sensor signal coherency is high enough, only the inner array was used for the array analysis. MUSIC requires the *a priori* knowledge of the number of waves propagating across the array at a given time. This number was evaluated using the procedure described in Cornou et al. (2003a). In this study, the number of signals is most often one and does not exceed the value of two. Array analysis was performed separately on each component at each time t_i within the frequency range $[f_i - 0.5, f_i + 0.5 \text{ Hz}]$ in increments of 0.1 Hz. The time window length of analysis was fixed to $2/(f_i - 0.5)$ in order to warrant at least two wave periods for analysis. Then, for each frequency, we evaluated the power spectrum of the identified signals and retained those propagation parameters that have provided the most powerful spectra (Cornou et al., 2003a). Finally, we only kept those waves identically identified on the three components together within a time, back-azimuth and a frequency deviation of 0.2 s, 10° and 0.1 Hz, respectively.

Figure 5 displays histograms of a) back-azimuth, b) frequency and c) apparent velocity of noise bursts after array processing. Distribution of frequency and apparent velocity as a function of back-azimuth are depicted in Figure 5d and Figure 5e. Since the number N of time-frequency points used for array analysis may vary from burst to burst (depending mainly of the burst duration), we have duplicated the propagation parameter estimates (frequency, back-azimuth, apparent velocity) such as bursts have finally the same number of estimates (N). The bursts arrival direction is clearly N200. Frequencies ranges from 3 to 5 Hz, apparent velocities mostly around 300 m/s and no specific distribution of velocity as a function of frequency have been observed.

Anthropic or/and natural origin? Some insights

The N200 back-azimuth points at a 65 m high chimney located nearby ROBE seismic station as indicated in Figure 2 (left). For the two bursts shown in Figure 3, we displayed in Figure 6 the signal recorded (top) and the arrival time (bottom) at the outer array sensors as function of distance measured from the ROBE seismic station. Amplitudes of bursts strongly decrease with distance and time delays between bursts arrivals are consistent with the 300 m/s propagation velocity measured from array analysis. This decay is also observed for all other bursts coming from the N200 back-azimuth. Results from array analysis and these last observations strongly suggest that the phenomenon at the origin of the noise bursts emission is at the chimney location.

Numerical and experimental studies have already shown that the vibrations of structures radiate diffracted waves into the soil through their foundation (Jennings, 1970; Kanamori et al., 1991; Wirgin and Bard, 1996; Guéguen et al., 2000a). Such effects of structure vibrations may become important when the soil-structure system frequency coincides with the underlying soft layer's resonance frequencies (Kanamori et al., 1991; Guéguen et al., 2002). In such a case, induced waves are trapped within the layer and propagate as surface waves, which form packets with a spindle-shape envelope in the surface motion up to several hundred meters (Guéguen et al., 2000a). Moreover, ambient vibrations can be used as building-excitement source for measuring structural parameters of the building such as natural frequency, damping factor, torsion parameters (e.g. Ivanovic et al., 2000; Dunand et al., 2001).

In order to study the possible effects of chimney vibrations to generating noise bursts, natural frequencies of this structure have been first measured using ambient vibration simultaneously recorded at the top and at the inner base of the chimney. In addition to these measurements, two seismic stations were deployed at 72 and 144 m far from the structure as schematized in Figure 7 (top). Data were recorded using Lennartz Le3D-5s sensors connected to the CitySharkTM seismic station (Chatelain et al., 2000). The transfer function of the structure indicates a fundamental vibration mode at 0.8 Hz and a first higher resonance mode at 4.3 Hz. Figure 7 (bottom) shows the Fourier spectra amplitudes recorded by the four sensors. Spectral contribution of the fundamental frequency of the tower is not observed any more at 72 and 144 m far from the structure. On the contrary, the first higher resonance mode (4.3 Hz) seems to contribute to the surface motion at least up to 144 m although its related released energy back into the soil is less energetic than the fundamental mode as indicated by the Fourier amplitude spectra recorded at the top and the base of the chimney. Besides, it has to be pointed out that some other frequencies appear on the spectra recorded at the top and bottom between 1.5 and 2 Hz, 3.5 and 5 Hz. These frequencies are less energetic and they might be due to second-order of behavior (e.g. substructures of the chimney or torsion mode) and surrounding sources polluting the ground motion.

It has been previously mentioned that a 40 m deep layer with low S-wave velocity has been observed at the borehole location. Because of the deposit and filled process of the Grenoble basin (Nicoud et al., 2002), the array is not located too far away from the borehole location (around 5 km) to reasonably assume the layer is continuous and exists with similar characteristics (thickness and seismic velocities) at the array site. However Lebrun (1997) has observed on H/V ratio computed on seismic ambient vibrations at various sites within the basin a secondary peak near 3 Hz which was

attributed to the resonance of a very surficial layer in the depth range of 20 – 40 m. Effects of a topmost thin soil layer overlaying the sediment fill on H/V peaks was also numerically (Cornou et al, 2003b) or experimentally observed in Quito and Pujili (Ecuador) by Guéguen et al. (1998, 2000b). We have thus computed the H/V ratio on the most stationary time windows (in order to avoid effects of transients produced by urban near-sources) of two hours of ambient vibrations simultaneously recorded by the array sensors. The most stationary windows were selected using a STA/LTA anti-trigger algorithm where STA = 0.5 s and LTA = 30 s and the time window length was fixed to 25 seconds when computing H/V spectral ratio. H/V curves computed at the outer array sensors are displayed in Figure 8. Except the fundamental resonance frequency of the basin around 0.3 Hz, most of the sites located in the eastern side of the array exhibit a secondary H/V peak with related frequencies varying from 2.5 to 4.5 Hz (Figure 8). Secondary H/V peaks occurring at frequencies ranging between 3.7 and 4.4 Hz are also observed at the inner array sensors whose related frequency values are indicated in Figure 9. In order to study the existence of such secondary H/V peak at a larger geographical scale, we have computed H/V ratio using noise recordings from Lebrun et al. (2001). Secondary peaks occurred in most H/V measurements at frequencies changing gradually from high values at the south-east to low values at the most central part of the basin as indicated in Figure 10. The existence of these secondary H/V peaks over a large area strongly argues a low-velocity topmost layer throughout the eastern part of the basin. Regarding the array site and assuming a constant S-wave velocity of 300 m/s, the deposit thickness should also vary from 15 to 30 m throughout the array site.

The frequency of the first higher mode of the chimney is close to the resonance frequency of this topmost layer and the frequency content of noise bursts: we therefore suggest that the waves radiated from the chimney at its fundamental mode have a too large wavelength to be trapped, and

propagate essentially downwards, while those emitted at the first higher mode are trapped within the layer, and propagate as surface waves that can be detected over long distances. At this point however, the duration and frequency content variability of the observed noise bursts has to be discussed: noise bursts presented in Figure 3 and in Figure 6 do not have indeed the same time length and the same frequency content while, in principle, they should if we assume pure harmonic structure-soil induced-waves effects. In order to hit these inconsistencies, we have first computed the Fourier amplitude spectra of twelve noise bursts that exhibited the highest signal-to-noise ratio. The time window length used for computing Fourier spectra was 15 seconds and Figure 11 displays recorded spectra at some array sites. Except two bursts exhibiting a dominant frequency around 3.6 Hz, the other bursts have a dominant frequency ranging between 4 and 5 Hz. For the MARA station that is the nearest seismic station located to the north of the chimney, a peak at 1.5 Hz appears for all the bursts on the east-west spectra. This frequency, that is not observed at other array sites in Figure 11, is similar to the one observed on the east-west spectra at the top, at the base and 72 m far from the structure (Figure 7). These observations argue 1) the origin of the chimney vibration in producing all the observed noise bursts and 2) the second-order source effect as previously mentioned. Then, during the experiment conducted to evaluate the resonance modes of the structure, the chimney was mainly exciting by a weak wind strong enough to generate inertial soil-structure interaction but not for generating noise bursts. A moderate-to-strong wind or some additive internal excitations produced by the burning of different combustible types (carbon, wood or animal meal for this plant) have thus to be involved for allowing the structure to release back into the soil enough energy for generating noise bursts. In such a case, the coupled effects of the wind properties (strength and direction), the burning process types and their coupled effects might favor a specific frequency. Other hypothesis involving effects of machinery only such as pumps or impulsive shocks do not have to be turned on but are rather unlikely: in the first case, the burst frequencies should be

kept going (i.e. undamped frequency) and they are not; and in the second case, the signal recorded at an array site, filtered by the soil only, should be strictly similar from burst to burst.

Modelling of structure-soil interaction

In order to confirm the relation between the bursts and the chimney, the vibrations of the tower and its induced effects into the soil have been modelled, following a two steps procedure. First, a free-vibration analysis of the soil-structure system assumed as an uniform cantilever-beam allows to obtaining its mode shapes and frequencies and its total damped motion. Second, the induced base moment and shear force are applied at the surface of a stratified half-space, and the resulting motion at various distances far from the chimney are estimated using the discrete wave number technique (see Guéguen et al., 2000a for the technique).

The chimney is made of concrete shaft of 65 m height H with external De and internal Di diameter of 6 m and 5.25 m, respectively, leading to inertial value I equal to 18.7 m^4 . and mass equal to $11.3 \cdot 10^3 \text{ kg/m}$ Since no detailed knowledge are available on the quality of the material, concrete Young's modulus E has been considered equal to the average Young's modulus usually considered for such material, i.e. $20 \cdot 10^9 \text{ Pa}$. For sake of simplicity, and because of the uniform chimney, the following analysis considers the tower having uniform properties along its length. The free-vibration equation of motion for this distributed-parameter system is then (Clough and Penzien, 1993):

$$EI \frac{\partial^4 v(x, t)}{\partial x^4} + \bar{m} \frac{\partial^2 v(x, t)}{\partial t^2} = 0 \quad (1)$$

where constants EI and \bar{m} represent the flexural stiffness and the uniform mass per unit length. Since EI and \bar{m} are constants, one form of this equation can be obtained easily by separation of variables using

$$v(x, t) = \phi(x)Y(t) \quad (2)$$

which indicates that the free-vibration motion is a specific shape $\phi(x)$ having a time-dependent amplitude $Y(t)$. Adopting the prime and dot notations to indicate partial derivatives with respect to x and t , respectively, and substituting Eq 2 into Eq 1 gives

$$\phi''''(x)Y(t) + \frac{\bar{m}}{EI}\phi(x)\ddot{Y}(t) = 0 \quad (3)$$

Dividing by $\phi(x)Y(t)$, the variables can be separated as follows:

$$\frac{\phi''''(x)}{\phi(x)} + \frac{\bar{m}}{EI} \frac{\ddot{Y}(t)}{Y(t)} = 0 \quad (4)$$

Because the two terms of Eq 4 are function of x and t only, the equation may be satisfied for arbitrary values of x and t only if each term is a constant in accordance with

$$\frac{\phi''''(x)}{\phi(x)} = -\frac{\bar{m}}{EI} \frac{\ddot{Y}(t)}{Y(t)} = a^4 \quad (5)$$

for which the single constant is designed as a^4 for following mathematical convenience. This equations yields two ordinary differential equations

$$\begin{aligned} \ddot{Y}(t) + \omega^2 Y(t) &= 0 \\ \phi''''(x) - a^4 \phi(x) &= 0 \end{aligned} \quad (6)$$

where $a^4 = \frac{\omega^2 \bar{m}}{EI}$ and ω is the circular frequency of the excitation. The first of these equations is the classical free-vibration equation for an undamped single-degree-of-freedom (SDOF) system depending upon the initial displacement and velocity conditions, solved by

$$Y(t) = Y(0)\cos \omega t + \frac{\dot{Y}(0)}{\omega} \sin \omega t \quad (7)$$

The second equation in equation (6) can be solved in the usual way by introducing a solution of the form

$$\phi(x) = B \exp(st) \quad (8)$$

leading to

$$(s^4 - a^4)B \exp(st) = 0 \quad (9)$$

from which the four roots are $s_{1,2} = \pm ia$ and $s_{3,4} = \pm a$

Substituting each of roots into Eq 8 separately and adding the resulting four terms, one obtains the following complete solution

$$\phi(x) = B_1 \exp(iax) + B_2 \exp(-iax) + B_3 \exp(ax) + B_4 \exp(-ax) \quad (10)$$

B_1 , B_2 , B_3 and B_4 must be treated as complex constants. Then, expressing the exponential functions in terms of their trigonometric and hyperbolic equivalents and setting the entire imaginary part of the right hand side of this equation to zero lead to

$$\phi(x) = A_1 \cos ax + A_2 \sin ax + A_3 \cosh ax + A_4 \sinh ax \quad (11)$$

where A_1 , A_2 , A_3 and A_4 are real constants, which have to be evaluated so as to satisfy the known boundary conditions (displacement, slope, moment or shear) at the limits of the beam. In the case of the chimney considered as cantilever uniform beam, the four boundary conditions to be satisfied are

$$\begin{aligned} \phi(0) = 0 & & \phi'(0) = 0 \\ M(H) = EI\phi''(H) = 0 & & V(H) = EI\phi'''(H) = 0 \end{aligned} \quad (12)$$

Substituting Eq 11 and its derivative expressions into these equations gives

$$\begin{aligned} \phi(0) &= (A_1 \cos 0 + A_2 \sin 0 + A_3 \cosh 0 + A_4 \sinh 0) = 0 \\ \phi'(0) &= a(-A_1 \sin 0 + A_2 \cos 0 + A_3 \sinh 0 + A_4 \cosh 0) = 0 \\ \phi''(H) &= a^2(-A_1 \cos aH - A_2 \sin aH + A_3 \cosh aH + A_4 \sinh aH) = 0 \\ \phi'''(H) &= a^3(A_1 \sin aH - A_2 \cos aH + A_3 \sinh aH + A_4 \cosh aH) = 0 \end{aligned} \quad (13)$$

The first two of these equations yield $A_3 = -A_1$ and $A_4 = -A_2$. Substituting these equalities into the last two equations of Eq 13 and expressing the result in matrix form, one obtains

$$\begin{bmatrix} (\cos aH + \cosh aH) & (\sin aH + \sinh aH) \\ (\sinh aH - \sin aH) & (\cos aH + \cosh aH) \end{bmatrix} \begin{Bmatrix} A1 \\ A2 \end{Bmatrix} = \begin{Bmatrix} 0 \\ 0 \end{Bmatrix} \quad (14)$$

A1 and A2 being nonzero, the determinant of the square matrix in this equation must be equal to zero as follows:

$$\sinh^2 aH - \sin^2 aH - \cos^2 aH - 2 \cosh aH \cos aH - \cosh^2 aH = 0 \quad (15)$$

which leads to the reduced form equation of the frequencies vibration of the chimney

$$\cos aH = -\left(\frac{1}{\cosh aH}\right) \quad (16)$$

The plot of functions $\cos aH$ and $-1/\cosh aH$ gives the values of aH corresponding to their crossing points for the root of equation 16 smaller than the third and give 1.875, 4.694 and 7.855 for aH_1 , aH_2 and aH_3 respectively. For the roots higher than the third, a approximate value of aH is given by $\cos aH=0$, i.e.

$$(aH)_n \cong \frac{\pi}{2}(2n-1) \quad n = 4,5,6... \quad (17)$$

Introducing the value of aH into the expression of the a parameter, the corresponding circular frequencies can be obtained through the following relation

$$\omega_n = (aH)_n^2 \sqrt{\frac{EI}{mH^4}} \quad (18)$$

for which E, I, m and H equal $20 \cdot 10^9$ Pa, 18.7 m^4 , $11.3 \cdot 10^3$ kg/m and 65 m respectively.

This relation provides values of frequency resonance to 0.77 and 4.78 Hz, corresponding to the fundamental ($n=1$) and to the first higher resonance mode, respectively, close to the experimental values obtained by in-situ measurements of building vibration.

Then, the previously obtained conditions used to resolved Eq. 14 (i.e. $A_3 = -A_1$ and $A_4 = -A_2$) and the expression of A_2 in terms of A_1 derived from Eq.14 can be introduced to Eq. 11, and the the mode-shape expression of equation (11) takes now the form

$$\frac{\phi(x)}{A_1} = \cos ax - \cosh ax - \frac{\cos aH + \cosh aH}{\sin aH + \sinh aH} (\sin ax - \sinh ax) \quad (19)$$

from which one obtains the corresponding mode-shape functions substituting separately the frequency-equation roots for aH into this expression.

Once the frequencies and mode shapes are defined, the physically permissible displacement pattern can be made up by superposing appropriate modal amplitudes $Y_n(t)$ of the vibration mode shapes for the structure, that comes down to the mode-superposition analysis expressed as

$$v(x, t) = \sum_{i=1}^{\infty} \phi_i(x) Y_i(t) \quad (20)$$

To evaluate the contribution of mode n in any arbitrary shape $v(x, t)$, this equation is multiplied by $\phi_n(x)m(x)$ on both sides and integrated, that gives results entirely equivalent to the discrete parameter

expression (Clough and Penzien, 1993). The expression of the $Y_n(t)$ coordinates can be now expressed under matrix form and takes the form

$$Y_n(t) = \frac{\phi_n^T m v(t)}{\phi_n^T m \phi_n} \quad (21)$$

By analogy with the undamped SDOF system (equation (2)), and considering a constant damping ratio $\xi = \xi_n$, the damped free-vibration response of the tower can be expressed in the form

$$Y_n(t) = \left[Y_n(0) \cos \omega_{Dn} t + \frac{\dot{Y}_n(0) + Y_n(0) \xi_n \omega_n}{\omega_{Dn}} \sin \omega_{Dn} t \right] \exp(-\xi_n \omega_n t) \quad (22)$$

where $\omega_{Dn} = \omega_n \sqrt{1 - \xi_n^2}$. Damping ratio has been evaluated using the randomdec method (Dunand et al., 2002) applied to the in-situ measurements of ambient vibrations at the top of the chimney. This method assumes the motion of the structures submitted to ambient noise is composed of its random response to the excitation and of its free-vibration response. By stacking ambient vibration time windows recorded at the building top, it is possible to build up the damped free-vibration response of the structure from which it is easy to evaluate the damping factor by the so-called logarithmic decrement method (Clough and Penzien, 1993). In the case of the chimney, this method led to a value of 1.0 %. Initial conditions expressed in matrix form of the discrete parameter formulation are

$$Y_n(0) = \frac{\phi_n^T m v(0)}{\phi_n^T m \phi_n} \quad \dot{Y}_n(0) = \frac{\phi_n^T m \dot{v}(0)}{\phi_n^T m \phi_n} \quad (23)$$

This formulation supposes that the chimney is considered as a discrete-parameter system, the terms of the diagonal mass matrix \mathbf{m} being equivalent then to the uniform mass per unit length, and the initial conditions vectors $\mathbf{v}(0)$ and $\dot{\mathbf{v}}(0)$ being applied to the gravity centre of each discrete mass. After generating the free-vibration response for each mode $Y_n(t)$, the displacement of the tower in the geometric coordinates can be evaluated using equation (20) which leads to

$$\mathbf{v}(t) = \phi_1 Y_1(t) + \phi_2 Y_2(t) + \dots + \phi_n Y_n(t) = \Phi Y(t) \quad (24)$$

The vector of elastic forces f_s that resist the deformation of the structure are then given directly in matrix form by

$$\mathbf{f}_s(t) = \mathbf{m}\Phi\{\omega_n^2 Y_n(t)\} \quad (25)$$

The base shear force $V_0(t)$ of the system is then given by the sum of all the discrete forces applied at the N gravity centre of the discrete mass, that is

$$V_0(t) = \sum_{i=1}^N f_{Si}(t) \quad (26)$$

and the resultant overturning moment $M_0(t)$ at the base of the building is

$$M_0(t) = \sum_{i=1}^N x_i f_{Si}(t) \quad (27)$$

where x_i is the height of the gravity centre of discrete mass i above the base.

The second step of our analysis amounts to considering that these base forces are seismic sources applied at the surface of the soil. The ground motion produced by the vibrating chimney is then computed using the wave number based Hisada's code (Hisada, 1994, 1995) that enables to consider

sources and receivers at the same depth. The induced ground motion is computed at the outer array sites (Figure 2). Since we did not have any sensor on the structure during the array experiment to account for the actual structure excitation (internal excitation characteristics and/or wind forces), the tower is forced into free-vibration by an equivalent static force applied at the top of the structure, which induces a static displacement of unit amplitude U_{0I} at the top. The initial displacement along the discrete-mass system is given considering the initial deflected shape $\Psi(x)$ and the static displacement U_{0I}

$$v(x,0) = \Psi(x)U(0) = \left(1 - \cos \frac{\pi x_i}{2H}\right) U_{0I} \quad (28)$$

while the initial velocity vector $\dot{v}(x,0)$ is null. The excitation is applied to the tower every 45 degrees in order to reproduce the isotropic nature of the input solicitation.

For noise bursts simulation, two 1D geotechnical profiles have been considered including or not a 15 m thickness topmost layer overlaying the deep sediment fill (Table 2). **As previously explained, the deposit thickness should vary from 15 to 30 m throughout the array sites. For the simulations, the thickness of the surficial layer was chosen such as to provide a resonance frequency of the surficial layer close to the 4.78 Hz higher resonance of the modelled chimney.**

As shown on computed time series and their corresponding Fourier spectra amplitude in Figure 12, vibrations of the tower induce seismic waves propagating into the soil at the fundamental and the first higher harmonic vibration frequencies of the chimney. Nevertheless, even if both frequencies are observed up to the farthest station from the structure, the amplitude of the surface ground motion is considerably higher in case of the geotechnical profile that includes the thin topmost layer (profile B) at the frequency coinciding to the resonance of the topmost layer (around 5Hz) and the first

higher mode of the structure. The effect of coincidence frequencies between soil and structure has been already defined in Guéguen et al. (2002) as one of the most important factors controlling the induced motion at large distances. As for simulated noise bursts, Figure 13 displays the time history and their corresponding Fourier spectra amplitude of the burst presented in Figure 6b. No energy in the Fourier spectra amplitude is observed at 0.8 Hz even for the closest seismic sensors. Such observation is double-checked when considering the Fourier amplitude spectra displayed in Figure 11 for the twelve bursts having the highest signal-to-noise ratio. One can thus reasonably assume the need of the topmost thin layer to reproduce over very long distances the very energetic noise bursts through trapping wave effects. Finally, the Maximal Spectral Amplitude (MSA) decay from the ROBE station computed using the synthetic signals generated for the geotechnical profile B (Table 2) was compared to the MSA observed using the twelve bursts previously defined. For both synthetic and actual noise bursts, time window length was fixed to ten seconds from the bursts onset and time signals were bandpass-filtered between 3 and 6 Hz. Because of the arbitrary amplitude of the external solicitation used to force into vibration the tower (see before), MSA have been normalized from the value at ROBE station. The MSA decaying shape is similar for both simulated and observed noise bursts, and the MSA variation with the distance from the tower reproduces the 500 and 900 m singular distances related to the chimney-array sites geometry. Such consistencies between simulation and observation argue once more the anthropic origin of the observed noise bursts.

Conclusions

As already shown in Guéguen et al. (2002), the effect of the urban environment has to be accounted for in site effects estimation. The vibrating energy of structures radiated into the soil through inertial soil-structure interaction may indeed be significant at large distance, particularly in case of

coincidence between fundamental frequencies of the structure and the soil. Observational and numerical analysis of some energetic noise waveforms that appear within the 3-to-5 Hz frequency band in the Grenoble city have provided strong insights that higher mode of vibration of a chimney might be hold responsible of such energetic waveforms generation that propagate over large distances thanks to a trapping effects of radiated waves within a topmost sedimentary layer whose fundamental resonance frequency is close to the first harmonic mode of the structure. The seismic ambient noise is thus polluted by energy bursts having amplitude larger than the average amplitude of the noise. The resonance frequency of the topmost layer falls unfortunately into the frequency range of most buildings. Since the energy bursts presented in this paper have been generated by a low level excitation, one can thus suspect stronger structure-soil interaction effects during moderate or strong seismic motion that may significantly modify the urban free-field motion and should be taken into account in local seismic hazard assessment studies.

Acknowledgments

We are thankful to S. Bonnefoy-Claudet, J.-L. Chatelain and F. Dunand for their help in the field. We also thank A. Zerva for providing the original MUSIC code. Most of the computations were performed at the Service Commun de Calcul Intensif de l'Observatoire de Grenoble (SCCI). This work was supported by the Pôle Grenoblois des Risques Naturels, the "Programme National de Recherche sur la Prévision des Risques Naturels" of the Institut des Sciences de l'Univers du CNRS and by the ACI-CATNAT program of the Education French Ministry.

References

Auger, F., P. Flandrin, 1995, Improving the Readability of Time-Frequency and Time-Scale Representations by Reassignment Methods, *IEEE Trans. on Signal Proc.*, **43**, 5, 1068-1089.

- Bard, P.-Y., 1998. Microtremor measurement: a tool for site effect estimation?, The Effects of surface geology on seismic motion, in Irikura K., Kudo K., Okada H., Sasatani T. (eds), Balkema, Rotterdam, 1251-1279.
- Bettig, B., P.-Y. Bard, F. Scherbaum, J. Riepl, F. Cotton, C. Cornou, D. Hatzfeld, 2001, Analysis of dense array measurements using the modified spatial auto-correlation method (SPAC). Application to Grenoble area. *Bull. Geof. Teor. Appl.*, 42, 3-4, 281-304.
- Chatelain, J.L., P. Guéguen, B. Guillier, J. Fréchet, F. Bondoux, J. Sarrault, P. Sulpice and J.M. Neuville, 2000, CityShark: A user-friendly instrument dedicated to ambient noise (microtremor) recording for site and building response studies, *Seismological Research Letters*, **71**, 6, 698-703.
- Clough, R.W and J. Penzien, 1993. Dynamics of structures, 2nd Edition, MacGraw-Hill, Inc Editor, 739 pages.
- Cornou, C., 2002, Traitement d'antenne et imagerie sismique dans l'agglomération grenobloise (alpes françaises): implications pour les effets de site, PhD dissertation, Université Joseph Fourier, Grenoble, 260 pp (in French)
- Cornou, C, P.-Y. Bard and M. Dietrich, 2003a, Contribution of dense array analysis to the identification and quantification of basin-edge induced waves. Part I: Methodology, *Bull. Seism. Soc. Am.*, 93, 6, 2604-2623.
- Cornou, C, P.-Y. Bard and M. Dietrich, 2003a, Contribution of dense array analysis to the identification and quantification of basin-edge induced waves. Part II: Application to Grenoble basin (French Alps), *Bull. Seism. Soc. Am.*, 93, 6, 2624-2648.
- Dunand F., P.Y. Bard, J.-L. Chatelain, P. Guéguen, T. Vassail and M.N. Farsi, 2002, Damping and frequency from Randomdec method applied to in situ measurements of ambient vibrations. Evidence for effective soil structure interaction. *Proc. 12th European Conf. Earth. Engng.*, paper n° 869, London, UK.

- Guéguen, P., J.-L. Chatelain, B. Guillier, H. Yepes and J. Egred, 1998, Site effect and damage distribution in Pujili (Ecuador) after the 28 March 1996 earthquake, *Soil Dynamics and Earthquake Engineering*, **17**, 329-334.
- Guéguen, P., P.-Y. Bard and C.S. Oliveira, 2000a, Near to distant motions from an isolated RC-building model: experimental and numerical approaches, *Bull. Seism. Soc. Am.*, **90**, 6, 1464-1479.
- Guéguen, P., J.-L. Chatelain, B. Guillier and H. Yepes, 2000b, An indication of the soil topmost layer response in Quito (Ecuador) using H/V spectral ratio, *Soil Dynamics and Earthquake Engineering*, **19**, 127-133.
- Guéguen, P., P.-Y. Bard and F.J. Chavez-Garcia, 2002, Site-City Interaction in Mexico City-Like environments: An Analytical Study, *Bull. Seism. Soc. Am.*, **92**, 2, 794-811.
- Hisada, Y., 1994, An efficient method for computing Green's functions for a layered half-space with sources and receivers at close depths (part I), *Bull. Seism. Soc. Am.*, **84**, 1456-1472.
- Hisada, Y., 1995, An efficient method for computing Green's functions for a layered half-space with sources and receivers at close depths (part II), *Bull. Seism. Soc. Am.*, **85**, 1080-1093.
- Ivanovic, S.S, M.D. Trifunac and M.I. Todorovska, 2000, Ambient vibration tests of structures: a review, *Bulletin of Indian Society Earthquake Tech, Special issue on experimental methods*.
- Kanamori, H., Mori, J., Anderson, D.L., Heaton, T.H., 1991, Seismic excitation by the space shuttle Columbia, *Nature*, **349**, 781-782.
- Jennings, P.C., 1970, Distant motions from a building vibration test, *Bull. Seism. Soc. Am.*, **60**, 2037-2043.
- Lebrun, B, 1997, Les effets de site: etude expérimentale et simulation de trios configurations, PhD dissertation, Université Joseph Fourier, Grenoble, 208 pp (in French).
- Lebrun, B., D. Hatzfeld, and P.-Y. Bard, 2001, A site effect study in urban area: experimental results in Grenoble (France), *Pageoph.*, **158**, 2543-2557.

- Nakamura, Y., 1989, A method for dynamic characteristics estimation of subsurface using microtremor on the ground surface. *QR of R.T.R.*, 30-1
- Nicoud, G., G. Royer, J.-C. Corbin, F. Lemeille, and A. Paillet, 2002. Glacial erosion and infilling of the Isère Valley during the recent Quaternary, *Géologie de la France*, 4, 39-49.
- Pedersen H. A., J. Mars, P.-O. Amblard, 2002, Improving surface wave group velocity measurements by energy reassignment, *Geophysics*, 68, 677-684.
- Schmidt, R.O., 1981, A signal subspace approach to multiple emitter location and spectral estimation, Ph.D. dissertation, 201 pp., Stanford University, Stanford, California.
- Wirgin, A. and Bard, P.-Y., 1996, Effects of buildings on the duration and amplitude of ground motion in Mexico city, *Bull. Seism. Soc. Am.*, **86**, 914-920.

Laboratoire de Géophysique Interne et Tectonophysique (LGIT)

BP53 X

38041 Grenoble Cédex 9, France

(C. C., P. G., E. H., P.-Y. B.)

Laboratoire Central des Ponts-et-Chaussées (LCPC)

56, bd Lefebvre

75732 Paris Cédex 15, France

(P. G., P.-Y. B.)

International Institute of Earthquake Engineering and Seismology (IEES)

Geotechnical engineering research center

Teheran

Iran

(E. H.)

Table 1. Time interval and number of noise energy bursts

Date	Time interval (TU)	Number of bursts
1999/03/29	01h00-03h00	13
	20h00-22h00	10
1999/03/31	01h00-03h00	30
	05h00-07h00	6
1999/04/01	05h00-07h00	5
	20h00-22h00	2

Table 2. Two geotechnical profiles in the Grenoble basin assumed in the outer array

Profile	density (kg/m ³)	P-wave velocity (m/s)	S-wave velocity (m/s)	Q _p	Q _s	Thickness (m)	
A	layer 1	1700	1850	700	100	50	700
	layer 2	2500	5600	3200	200	100	∞
B	layer 1	1500	1500	300	40	20	15
	layer 2	1700	1700	700		50	685
	layer 3	2500	5600	3200	100 200	100	∞

Figure captions

Figure 1. a) Grenoble basin's digital elevation model and, superimposed, the 3D contour map of the basement's depth (white lines) inferred from gravimetric measurements (Vallon, 1999). Depth is indicated in meters. Location of the array and the borehole are also indicated. b) P- (thick line) and S- (thin line) wave interval velocity profiles derived from vertical and offset seismic profiles measurements at the borehole location (Cornou, 2002).

Figure 2. (left) Approximative geographical array location, cross indicates location of the chimney. (right) Outer and inner array configuration. The BP00 station is located at the center of the inner array. **Figure 3.** Example of two noise energy bursts (a) and (b) observed on the vertical component of the inner array sensors (top) and corresponding Fourier spectra amplitude (bottom). Signals are not filtered. Fourier amplitude spectra is expressed in

Figure 4. Smoothed Pseudo Wigner-Ville distribution (bottom right) of a noise burst (top) and location (ridges, bottom right) of the 40% most energetic part of the energy density spectrum. The reassigned SPWV is not shown here.

Figure 5. Results from the array analysis: histograms of a) back-azimuth, b) frequency and c) apparent velocity; distribution of frequency (d) and apparent velocity (e) as a function of back-azimuth.

Figure 6. Outer array sensors recordings (vertical component) of the noise bursts displayed in **Erreur ! Source du renvoi introuvable.** as a function of the sensor-to-sensor distance from the ROBE station.

Figure 7. (Top) Sensors configuration during the in-situ measurements of the chimney dynamic characteristics; (Bottom) Fourier spectra amplitudes of 300 s of noise recorded at the top (roof) and the inner base of the structure (EW component), and at 72 and 144 m far from the structure (EW and NS components).

Figure 8. H/V ratio +/- standard deviation computed on the most stationary parts of 2h00 seismic ambient noise recorded at the outer array sites (see Figure 2 for array sites location). When a secondary peak is observed on H/V ratios, value of the corresponding frequency is indicated.

Figure 9. Frequencies in Hz of the secondary peak observed on H/V ratios computed at inner array sites using the most stationary time windows of 2h00 noise recordings.

Figure 10. Grenoble basin's depth contour map derived from gravimetric measurements (Vallon, 1999); dots indicate location of H/V measurements performed by Lebrun et al (2001) and crosses indicate location of outer array sensors (the BP00 station located at

the center of the inner array is indicated by a dot-cross). When a secondary peak is observed on H/V curves, its related frequency is indicated.

Figure 11. Three components of the Fourier amplitude spectra observed at some array sites (see Figure 2 for location of the seismic stations), using the twelve noise bursts that exhibited the highest signal-to-noise ratio. The time window length for Fourier spectra computation was fixed to 15 s. Names of the seismic stations considered are indicated on the right. The gray shaded area indicates the 3-to-5 Hz frequency band.

Figure 12. Time series (left panel) and their corresponding Fourier spectra amplitude (right panel) as a function of the chimney-to-sensor distance of simulated noise bursts using the A (black lines) and the B (red lines) geotechnical profiles listed in Table 2. The logarithmic value of the Fourier amplitude spectra is represented here. The gray shaded area indicates the 0.5-to-0.8 Hz and the 3-to-5 Hz frequency band.

Figure 13. Time series (left panel) and their corresponding Fourier spectra amplitude (right panel) as a function of the chimney-to-sensor distance of the observed noise burst previously presented in Figure 3b. The logarithmic value of the Fourier amplitude spectra is represented here. Time series are band-pass filtered between 0.1 and 10 Hz. The gray shaded area indicates the 3-to-6 Hz frequency band.

Figure 14. Maximal Spectral Amplitude values of the simulated energy bursts using geotechnical profile B (thick line) and twelve observed bursts (thin lines and dots) recorded at the array sites as function of the chimney-to-array sites distance.

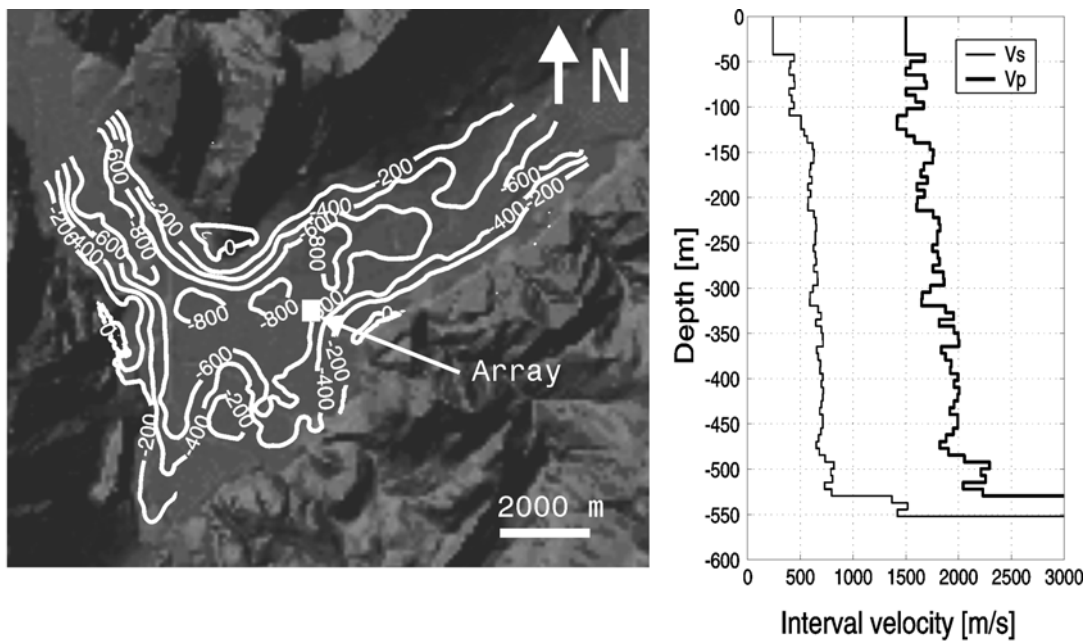


Figure 1

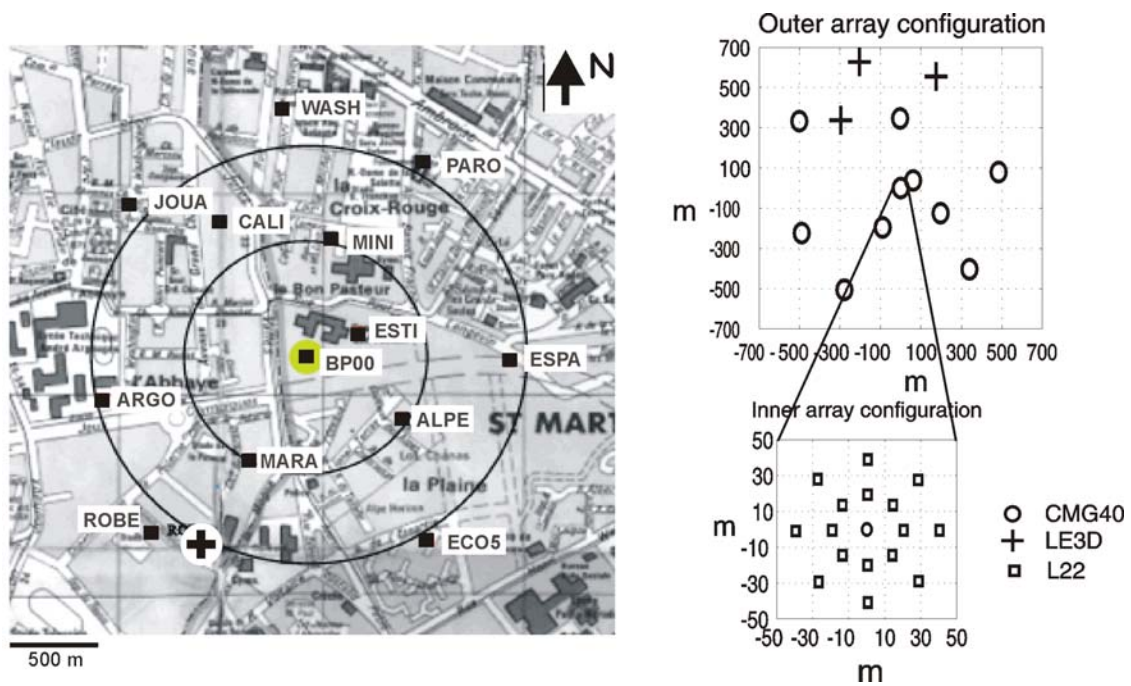
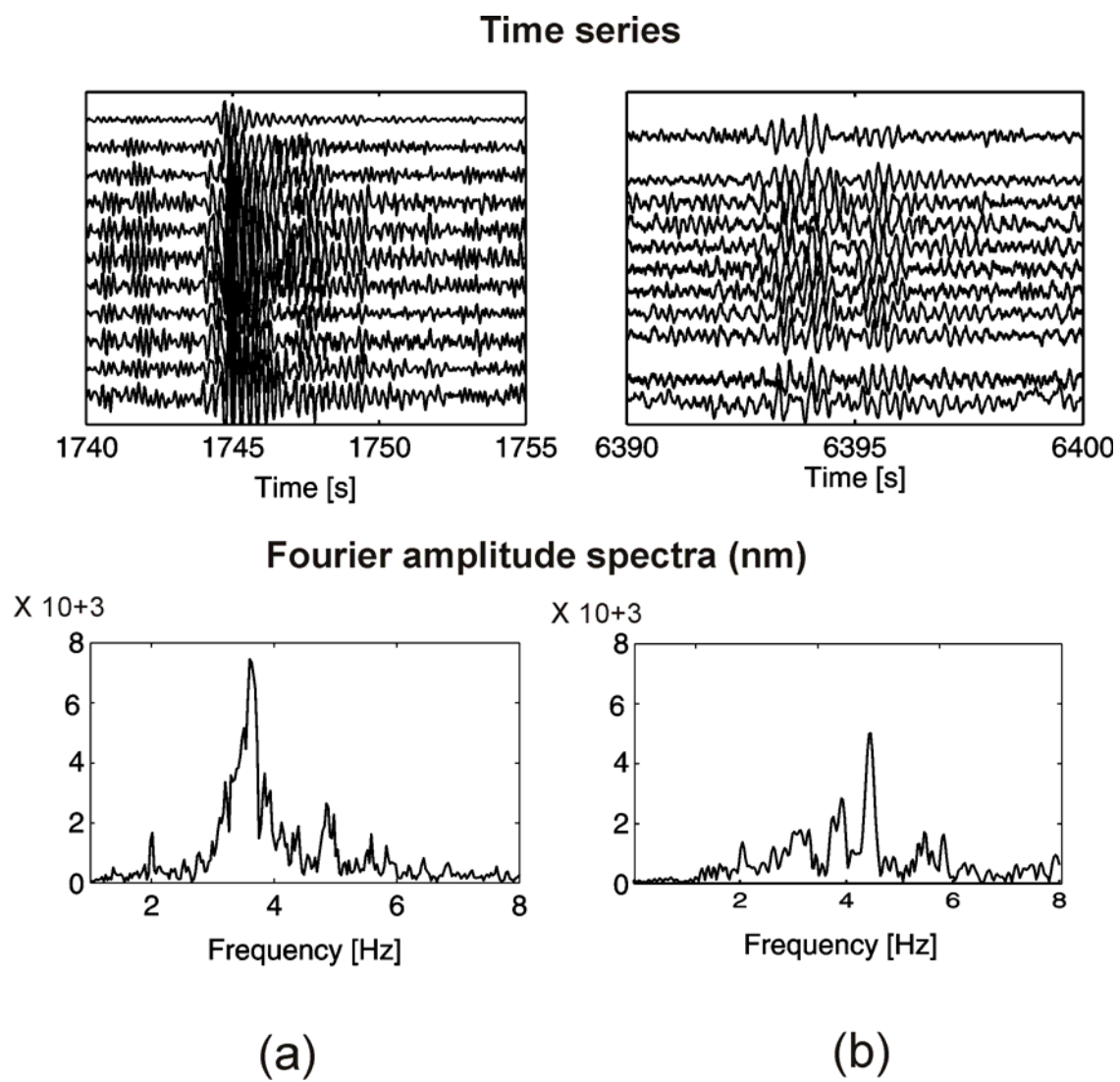


Figure 2

**Figure 3**

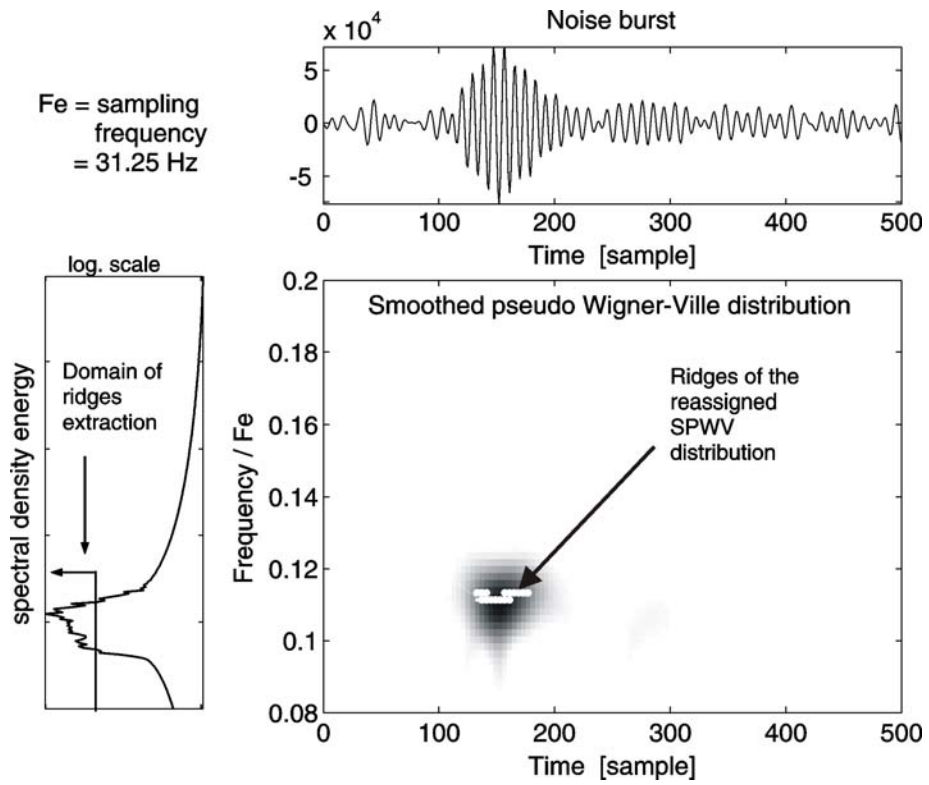
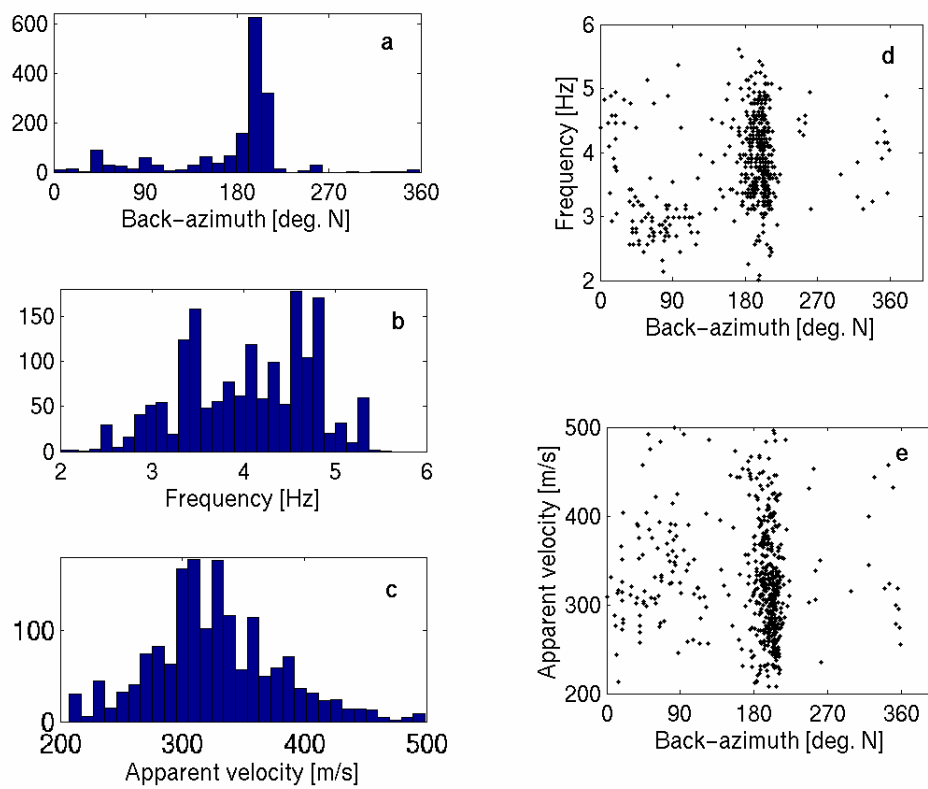


Figure 4

**Figure 5**

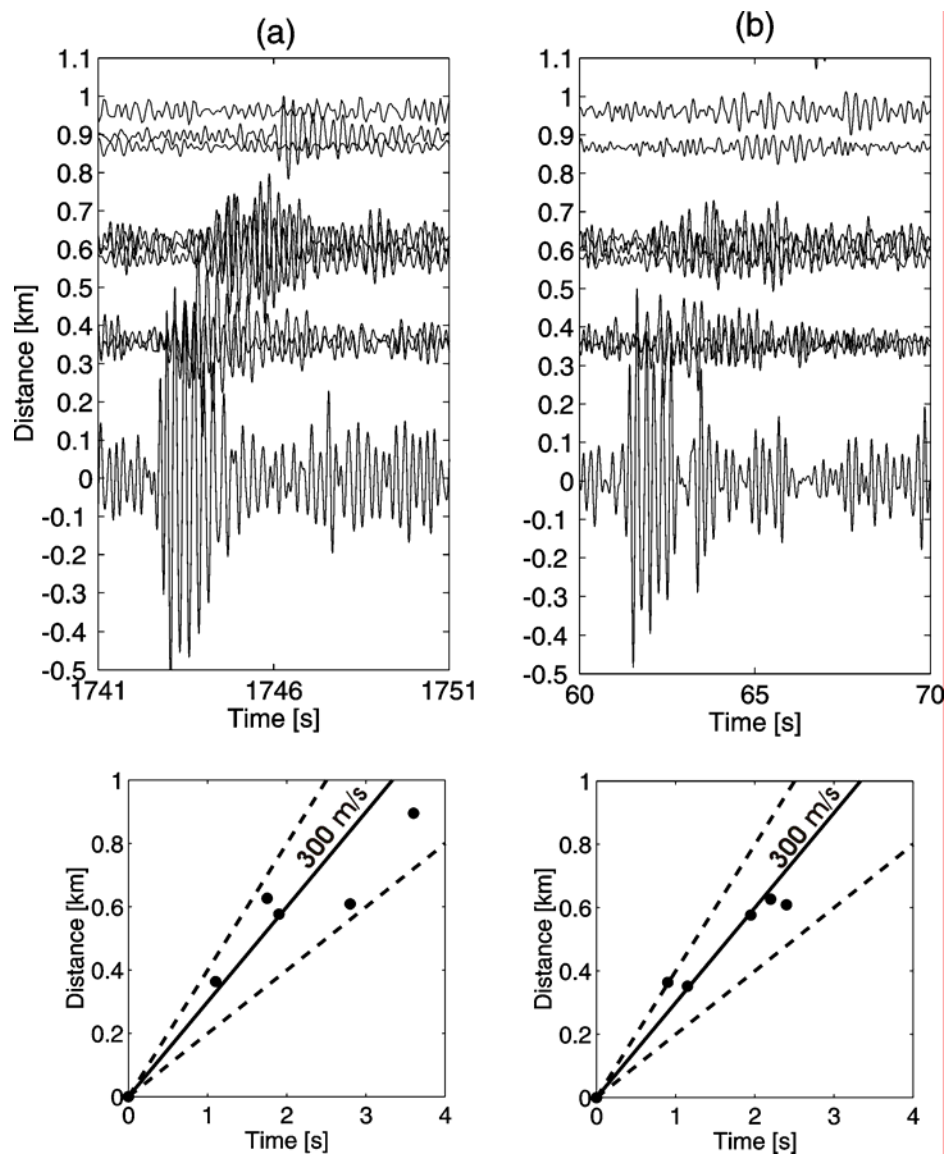


Figure 6

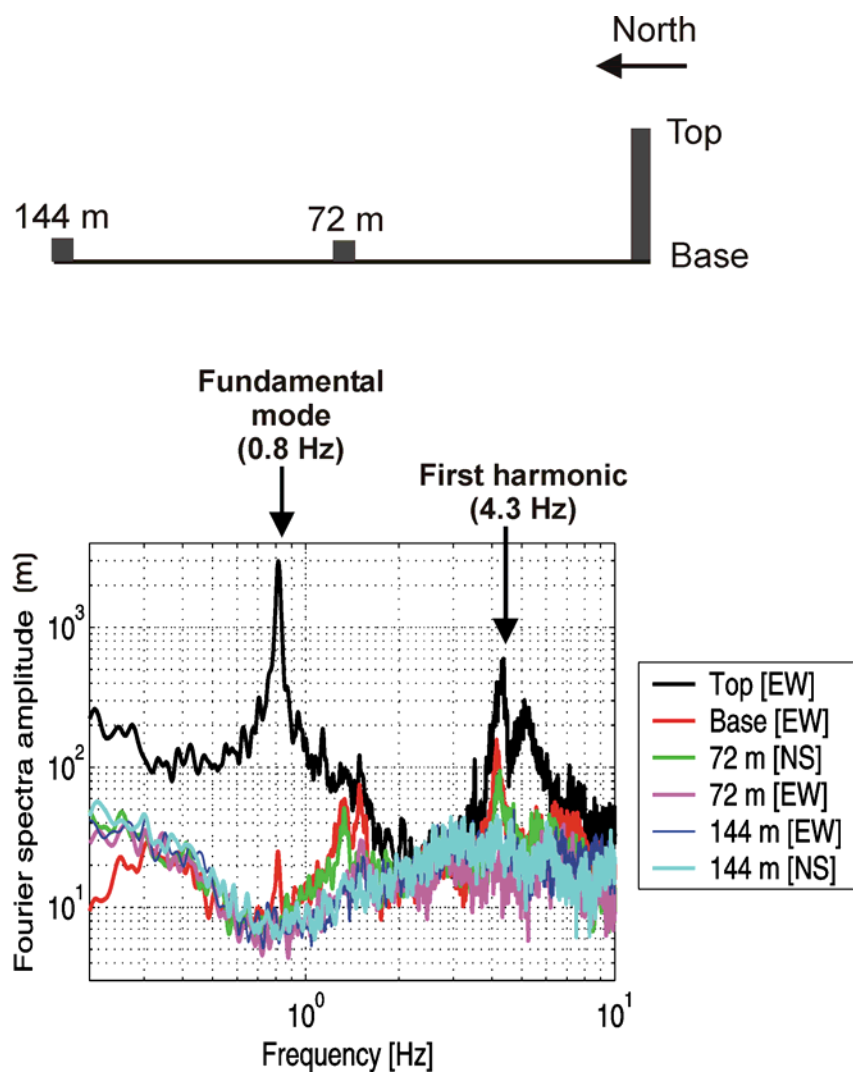


Figure 7

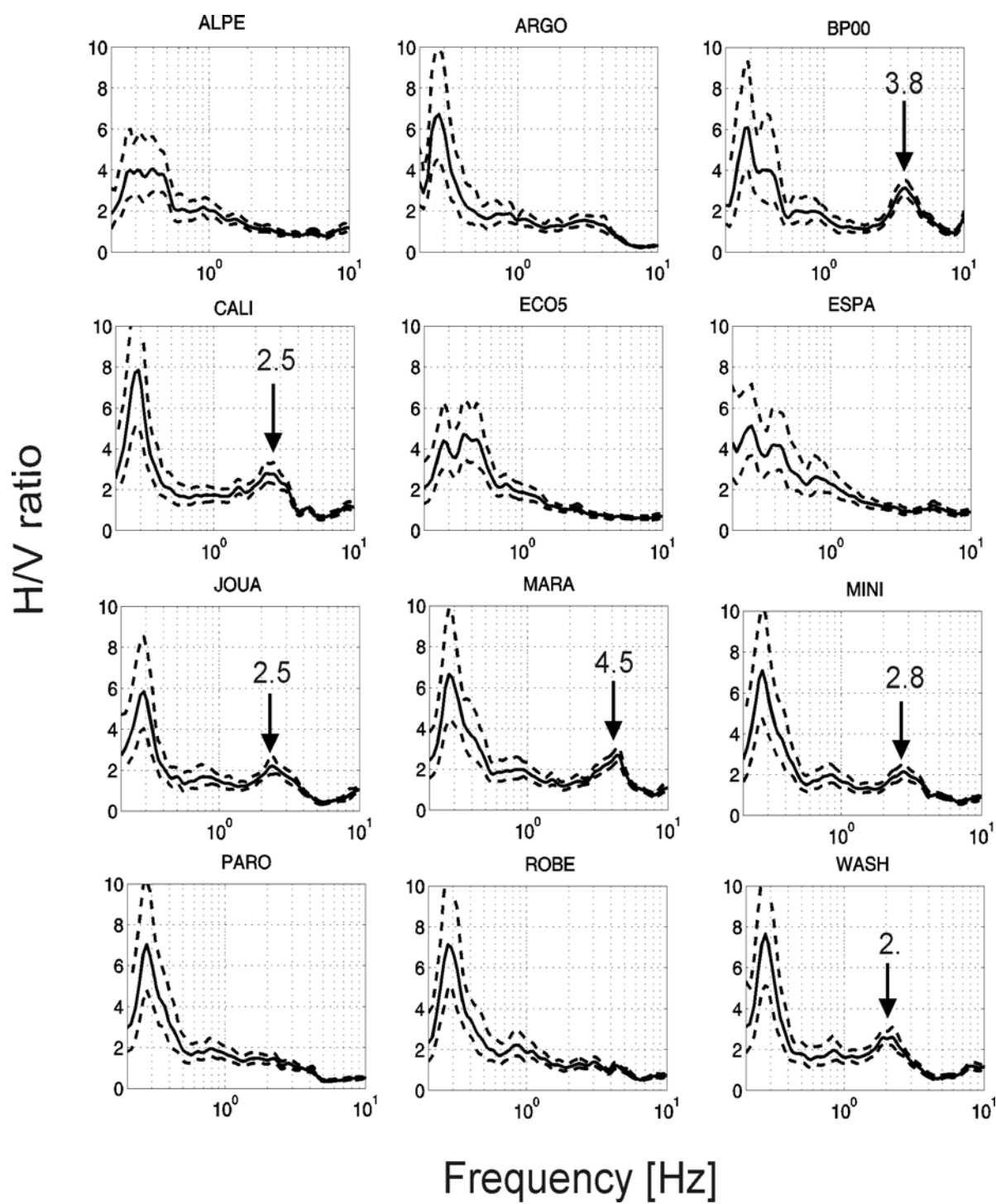
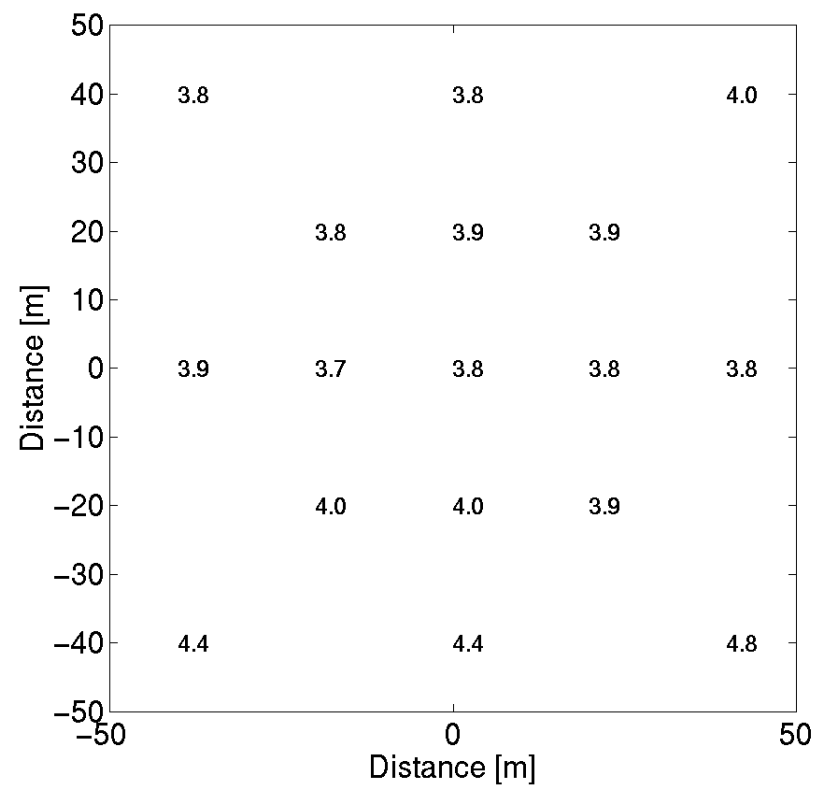


Figure 8

**Figure 9**

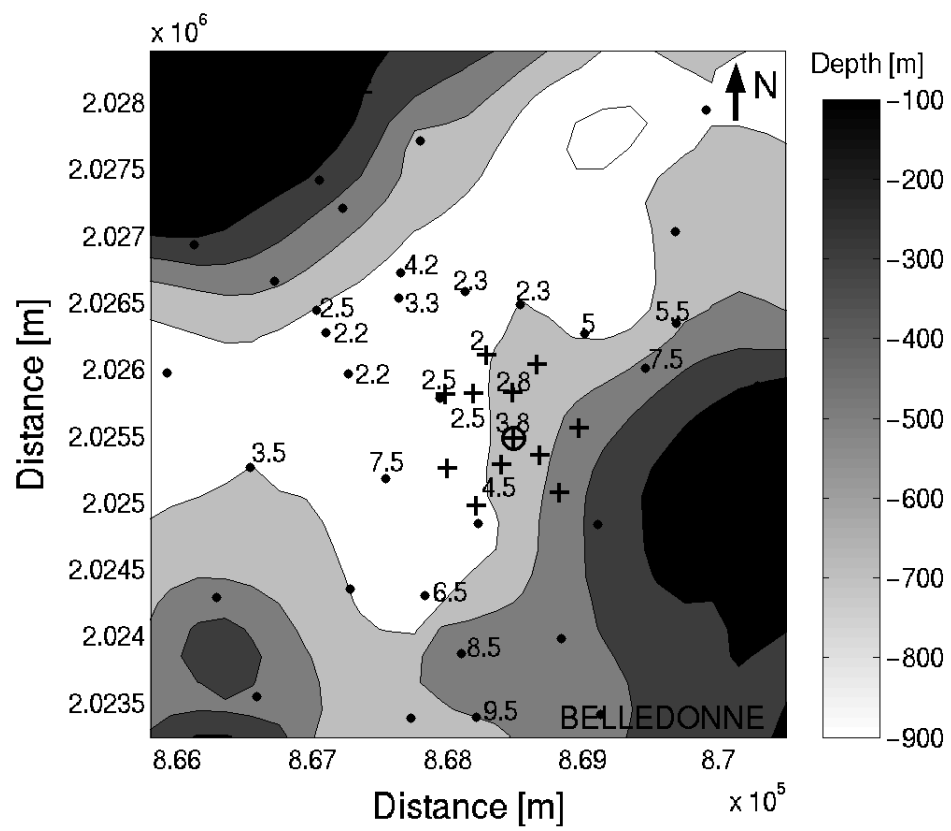


Figure 10

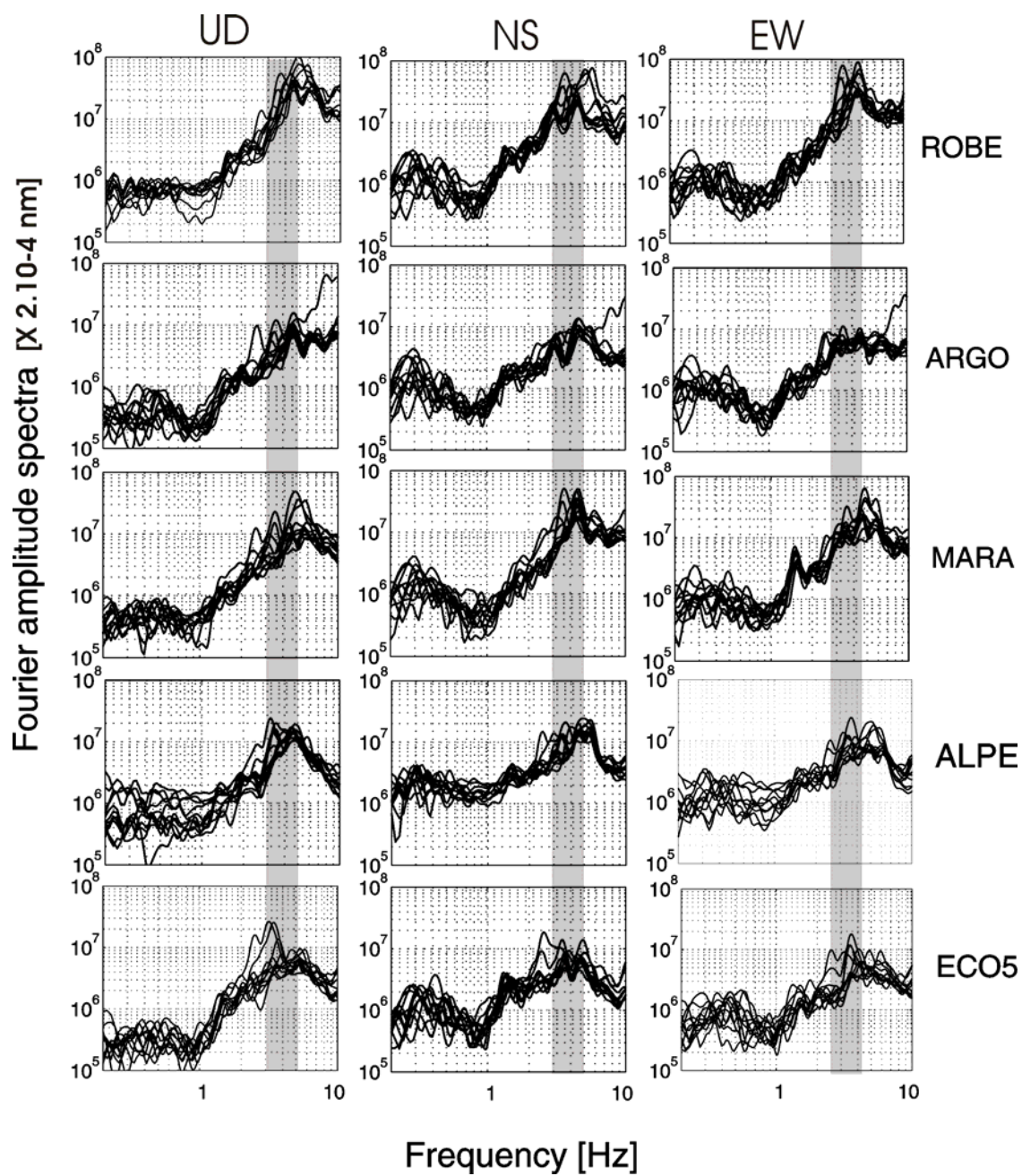


Figure 11

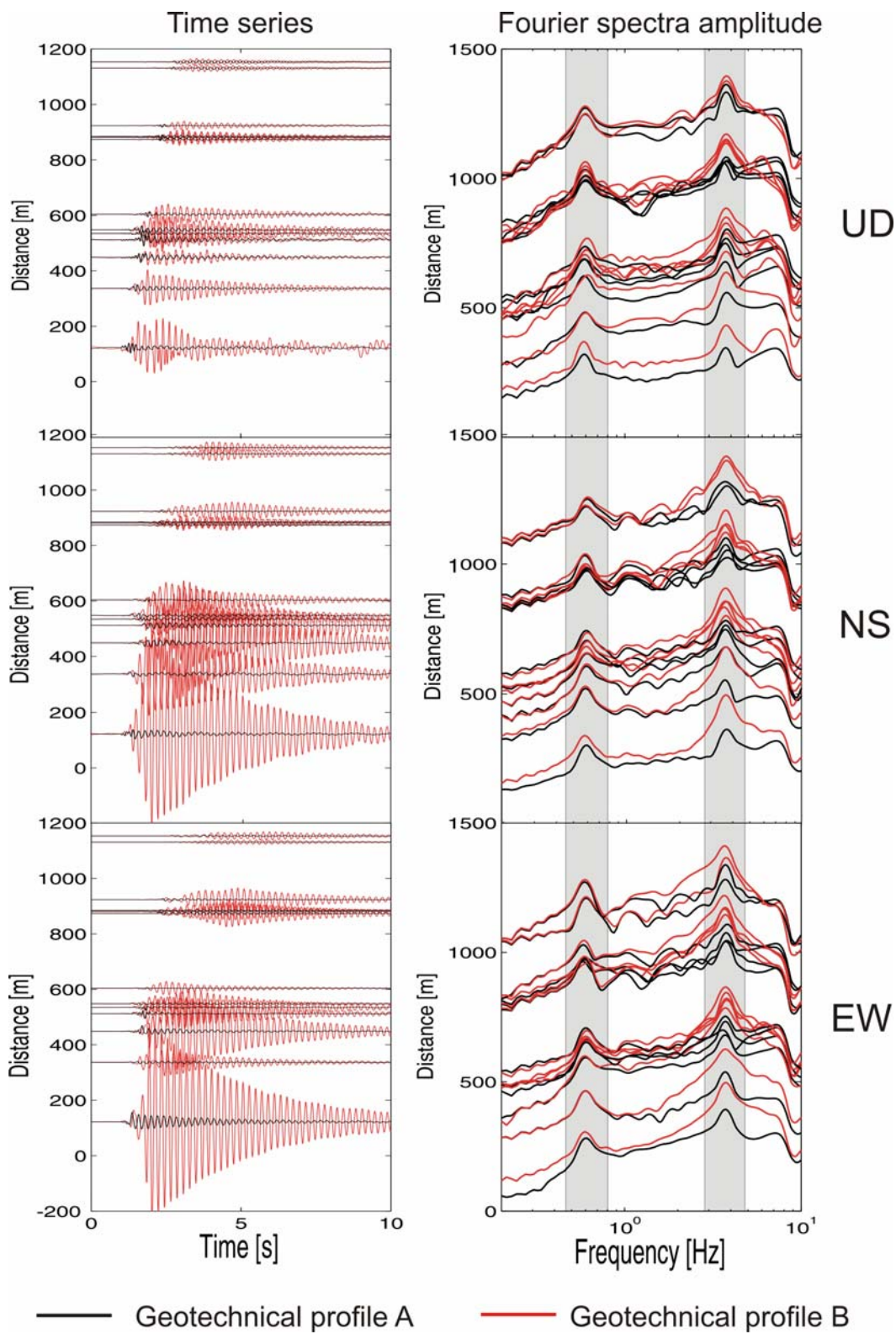


Figure 12

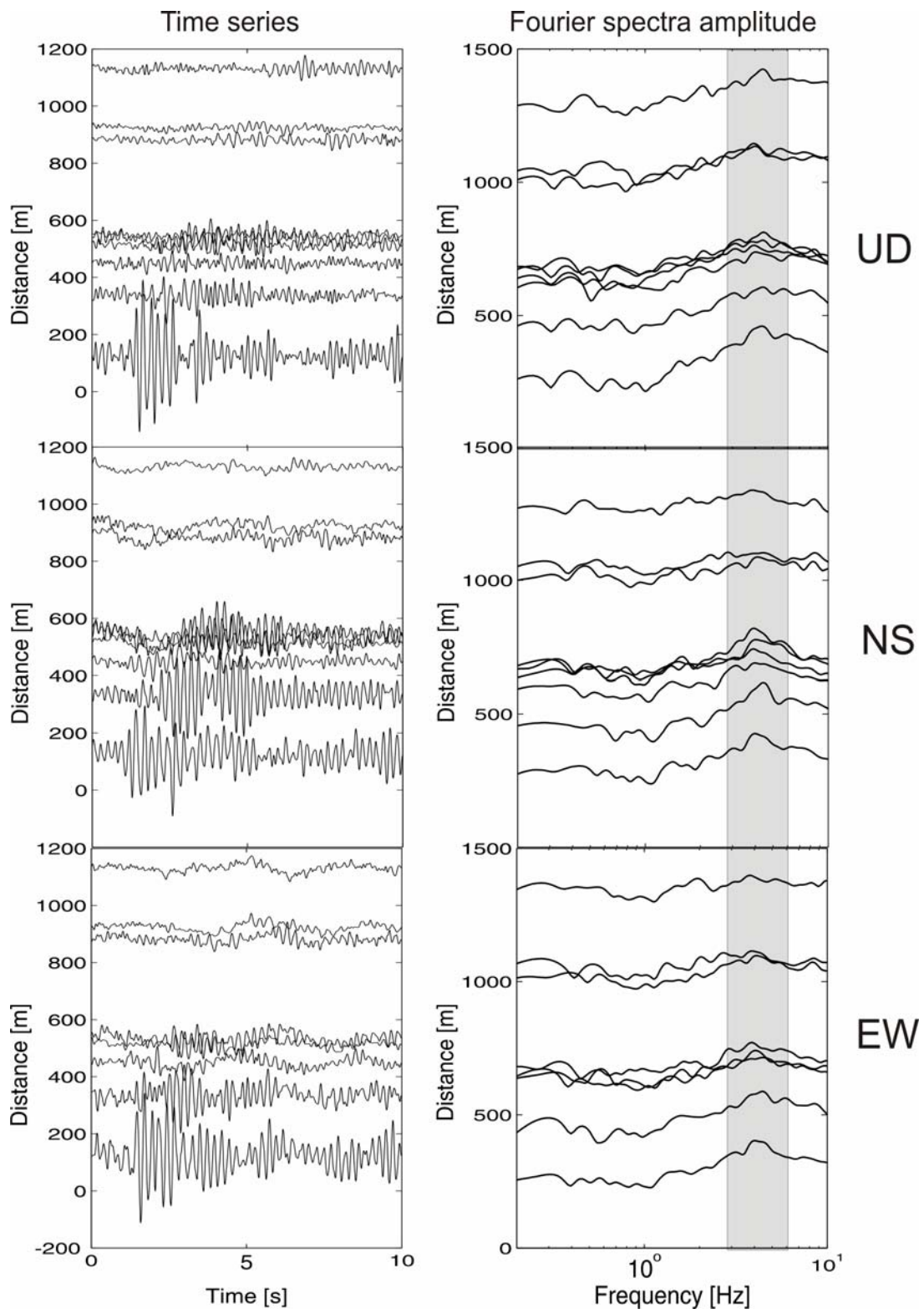


Figure 13

