



HAL
open science

The cephalic neural crest exerts a critical effect on forebrain and midbrain development.

Sophie Creuzet, Salvador Martinez, Nicole Le Douarin

► To cite this version:

Sophie Creuzet, Salvador Martinez, Nicole Le Douarin. The cephalic neural crest exerts a critical effect on forebrain and midbrain development.. Proceedings of the National Academy of Sciences of the United States of America, 2006, 103 (38), pp.14033. 10.1073/pnas.0605899103 . hal-00103161

HAL Id: hal-00103161

<https://hal.science/hal-00103161v1>

Submitted on 6 Oct 2006

HAL is a multi-disciplinary open access archive for the deposit and dissemination of scientific research documents, whether they are published or not. The documents may come from teaching and research institutions in France or abroad, or from public or private research centers.

L'archive ouverte pluridisciplinaire **HAL**, est destinée au dépôt et à la diffusion de documents scientifiques de niveau recherche, publiés ou non, émanant des établissements d'enseignement et de recherche français ou étrangers, des laboratoires publics ou privés.

This article was published in *PNAS*, 2006, 103, pp. 14033-14038
doi : 10.1073/pnas.0605899103 ; The National Academy of Sciences of the USA
The publication is available online at
<http://www.pnas.org/>

BIOLOGICAL SCIENCES / DEVELOPMENTAL BIOLOGY

THE CEPHALIC NEURAL CREST EXERTS A CRITICAL EFFECT ON FORE- AND MIDBRAIN DEVELOPMENT

Sophie E. Creuzet ¹, Salvador Martinez ², and
Nicole M. Le Douarin ^{*1}

¹ *Institut de Neurobiologie Alfred Fessard*
Laboratoire de Développement, Evolution et Plasticité du Système Nerveux
Avenue de la Terrasse, F-91198 Gif-sur-Yvette, France
Tel: 33 1 45 14 15 15 – Fax: 33 1 48 73 43 77

² *Instituto de Neurociencias UMH-CSIC*
San Juan de Alicante, 03550- Spain

*Corresponding author : nicole.le-douarin@college-de-france.fr

Contributed by Nicole M. Le Douarin

© key words : neural crest, brain development, FGF8

© abbreviations : BA, branchial arch ; *En*, Embryonic day *n*, FGF, fibroblast growth factor, FSNC, facial skeletogenic neural crest ; HH, Hamburger and Hamilton's stage ; NC, neural crest ; NCC neural crest cell ; NF, neural fold; NT neural tube; P, prosomere ; r, rhombomere ; *nss*, *n*-somite stage.

Abstract

Encephalisation is the most important characteristic in the evolutionary transition leading from protochordates to vertebrates. This event has coincided with the emergence of a transient and pluripotent structure, the neural crest (NC) which is absent in protochordates. In vertebrates, NC provides the rostral cephalic vesicles with skeletal protection and functional vascularization. The surgical extirpation of the cephalic NC, which is responsible for building up the cranio-facial skeleton, results in the absence of facial skeleton together with severe defects of pre-otic brain development leading to exencephaly. Here, we have analysed the role of the NC in fore- and midbrain development. We show that i) NC cells (NCC) control *Fgf8* expression in the anterior neural ridge (ANR) which is considered as the prosencephalic organizer, ii) the cephalic NCC are necessary for the closure of the neural tube, and iii) NCC contribute to the proper patterning of genes that are expressed in the prosencephalic and mesencephalic alar plate. Along with the development of the roof plate, NCC also concur to the patterning of the pallial and subpallial structures : we show that the NC-dependent production of FGF8 in ANR is able to restrict *Shh* expression to the ventral prosencephalon. All together, these findings support the notion that the cephalic NC controls the formation of craniofacial structures and the development of pre-otic brain.

Introduction

Fate mapping experiments, conducted in the avian embryo and based on the construction of quail-chick chimeras, have led to the notion that the facial and hypobranchial skeletons are derived from neural crest cells (NCC) migrating from the mid-diencephalon down to rhombomere 8 (r8) included (1, 2). This domain is divided into two parts. A rostral one which yields the entire facial skeleton designated as FSNC (for Facial Skeletogenic Neural Crest) in which no genes of *Hox* clusters are expressed and a posterior one which yields the mid- and posterior parts of the hyoid bone and in which *Hox* genes of the four first paralogue groups are expressed (Supporting figure 1) The limit between these two domains corresponds to r3 the NCC of which play a pivotal role between the rostral *Hox*-negative and the caudal *Hox*-positive NCC populations (3, 4, 5, 6). Some r3 NCC migrate to BA1, while others diverge to participate in BA2. The former lose their *Hoxa2* expression during the migration, whereas the latter maintain it within BA2 environment.

Experiments in which the *Hox*-negative neural fold (NF) was removed prior to NCC emigration (Fig. 1A-C) resulted in the complete absence of facial skeleton, while only a third of the anterior, *Hox*-negative, territory left in situ (or grafted from quail to chick) was sufficient to generate a complete face. These and other data (7, 8, 9) led us to consider that *Hox*-positive cephalic NCC cannot substitute for their *Hox*-negative counterpart in constructing the face. Moreover, forced expression of *Hox* genes in the rostral domain of the NC inhibited the expression of their skeletogenic potencies (9). If gain-of-function of *Hoxa2* concerned all tissues, homeotic transformations of BA1-derived skeleton ensued (10, 11).

In addition to the effect on the facial skeleton, ablation of the FSNC at the 5-6 somite-stage (5-6ss) in chick or quail embryos resulted in major perturbations of forebrain and midbrain development characterized by failure of neural tube (NT) closure and exencephaly (Fig. 1F-I). In the operated embryos observed at E2 and E3, *Fgf8* expression was nearly abolished in the anterior neural ridge (ANR, both in the neuroepithelium and superficial ectoderm) and absent in the ectoderm of the first branchial arch (BA1) (Fig. 1D,E) (5). The abnormalities following FSNC ablation could be significantly corrected by the implantation of FGF8-soaked beads bilaterally on the presumptive territories of BA1 ectoderm. This induced a cell outflow from r3 which filled up BA1. An upper and lower jaw developed as well as part of the nasal septum. In addition, closure of the NT occurred and brain development tended to normalize. In the present work, we show that the NCC exert a critical effect on the patterning of fore- and midbrain. Its action is in part direct since it is mediated by a still unknown factor of NC origin. Moreover, an additional indirect effect is due to FGF8 whose production by the ANR and the BA ectoderm is induced and maintained by NCC. We show here that this factor restricts the expression of *Shh* to the forebrain basal plate.

Results

1. Rescue of facial structures depends on the location of the source of exogenous FGF8-soaked beads

As previously described, the phenotype resulting from the ablation of FSNC was the absence of facial skeleton and severe defects in forebrain and midbrain development (Fig. 1A-I). In these embryos, the loss of endogenous FGF8 production in BA1 was first substituted for by exogenous sources of the recombinant protein (i. e. FGF8-soaked heparin acrylic beads) placed on the presumptive BA1 ectoderm. We have previously shown (5) that NCC arising from the remaining r3 (at the limit of the excised territory, which normally provides a few cells only to BA1) expanded considerably and migrated to the maxillo-mandibular region where they generated a nearly complete jaw skeleton. In the present work, we have followed the migration flow of NCC of r3 origin in various experimental conditions throughout embryonic day 2 and 3 (E2-3) when NCC colonize the facial processes. Following FSNC excision, r3 was replaced by its quail counterpart and the FGF8 beads were placed either on BA1 ectoderm or at the presumptive level of the ANR (Supporting figure 2A).

In absence of FGF8 beads, the very few NCC arising from r3 line the root of the trigeminal nerve (Fig. 1J,K). As shown previously (5), in embryos where FGF8 beads were placed on BA1 ectoderm NCC arose massively from r3 and invaded predominantly BA1. When the exogenous source

of FGF8 were placed on the anterior neural ridge (ANR) (Fig. 1P), the direction of the migration stream of NCC was strikingly different. Although originating from the same source (r3) as in the previously described experiment, the r3-derived NCC progressed rostrally along the lateral margins of the mes- and prosencephalon to reach and encompass the upper aspect of the optic vesicle (n=7; Fig. 1L). Thus, the FGF8-beads implanted in contact to the ANR were able to drive the NCC progression towards the fronto-nasal region. As a result and in contrast to the outcome of experiments where the FGF8 beads were placed on BA1 presumptive ectoderm, the lower jaw was only partly rescued, the upper beak was shortened and the maxillary process reduced (n=8; Supporting figure 2A-D). The mandible contained a short cartilage rod which can be interpreted as a rudimentary Meckel's cartilage (Supporting figure 2C). This bone was always made up of quail cells when the chick r3 had been replaced by its quail counterpart (n=4; Supporting figure 2D).

2. Exogenous FGF8 rescues brain development

In the absence of FGF8 beads, the brain of the FSNC-ablated embryos was wide open and the pre-otic brain vesicles were no longer visible as shown at E6 (n=6) in figure 1N. FGF8 supplementation with beads, whether placed laterally on BA1 ectoderm or on the ANR, restored the closure of the brain vesicles, while the development of the prosencephalon and mesencephalon tended to normalize. The most complete rescues of brain development were obtained when exogenous FGF8 was delivered on the ANR (n=5). In these cases, the growth of the telencephalic vesicles increased over their normal size up to E7 and later on normalized (n=5; Fig. 1O). It is remarkable that 4 1/2 hours following FSNC excision (i. e. at 9ss) the rostral NT is normally closed in spite of the absence of the NF (n=5; see Fig. 1A-C; Supporting figure 3); this closure was however unstable since later on the fore- and midbrain exhibited typical exencephaly (Fig. 1I, N).

3. Respective roles of the NCC and FGF8 in the restoration of brain development

We have shown so far that FGF8 beads placed either on the ANR or on BA1 ectoderm stimulate the expansion of r3-derived NCC and provide guidance cues for their migration. The problem was then raised as to whether a stable closure of the fore- and midbrain NT depends upon either the FGF8 supply or a specific action of the NCC. The other alternative being that both factors play a joint role in this process.

In order to answer this question, we eliminated the r3 source of NCC while providing exogenous FGF8 to FSNC-deprived embryos through beads placed on the ANR (Fig. 1P-S). The source of regenerating NCC being eliminated, the question was to see whether closure of the NT could be maintained. These embryos exhibited an "open" brain and had no facial development (n=23; Fig. 1R-S). It was interesting to compare the migration flux of NCC in this situation with that which prevails when r3 is present. In the absence of r3 NF, the r4-produced NCC which instead of migrating exclusively to BA2 (n=3), also formed a small rostral stream of cells that however failed to reach the level of BA1 and of the forebrain (n=4; Supporting figure 2I-M). This shows therefore that the source of FGF8 placed on the ANR is not sufficient to induce by itself NT closure and that the NCC play an essential role in this process.

We have then examined whether NCC were participating in roof plate formation in pro- and mesencephalon in embryos subjected to FSNC excision followed by exogenous FGF8 supply on ANR. In these embryos, r3-NF was replaced by its quail counterpart (Supporting figure 2A). In this context r3-derived NCC, while giving rise to mesenchymal cells in the forehead, did not take part in the formation of the roof plate along the pre-otic cephalic vesicles (n=5; Supporting figure 2E-H). These data indicate that migrating NCC operate in this process by providing the cephalic neuroepithelium with critical diffusible signals for the maintenance of NT closure rather than with a cellular contribution to the roof plate.

In order to further study the roles played by the NCC in NT closure, we next studied the patterns of gene expression in the developing fore- and midbrain in normal and experimental conditions.

4. Comparative gene expression patterns of the developing head in normal and experimental embryos

We have investigated the changes in expression of genes that had been previously shown to play a major role in patterning the ventro-dorsal and antero-posterior organization of the brain.

Expression of *Twist* appears as a critical step in cephalic neurulation since its null-mutation results in the failure of the rostral NT closure (12). Moreover, it is involved in *Fgf*-dependent epithelio-mesenchymal interactions taking place in several morphogenetic processes (13). In 24ss normal avian embryos, *Twist* transcripts are present in the cephalic NCC that have populated the BAs and the fronto-nasal primordia (n=8; Fig. 2A). In addition, *Twist*-labelled cells, fated to participate in the development of the calvarium (not stained with HNK1 Mab), are normally present on the dorso-lateral aspects of the cephalic vesicles. The abnormally developed heads of stage-matched FSNC-ablated embryos were devoid of *Twist* transcripts in both presumptive BA1 and pre-calvarial domains (n=7; Fig. 2B). This is in agreement with the absence of NCC in these regions. When subjected to FGF8 supplementation administered on the ANR, FSNC-ablated embryos exhibited a strong expression of *Twist* in the fronto-nasal region together with an expanded expression domain latero-dorsally to the telencephalic and diencephalic vesicles (n=7; Fig. 2C). Thus r3-derived NCC, which developed under the influence of exogenous FGF8, exhibited a normal pattern of *Twist* expression.

Similar observations were made for *Wnt5a*. In mammals, the activation of *Wnt5a* signalling in head ectomesenchyme correlates with the outgrowth of the fronto-nasal and maxillo-mandibular processes. In null *Wnt5a* mouse mutants, nasal capsule and jaw apparatus are absent (14). In normal E2.5 chick embryos, *Wnt5a* is expressed in BA1 and in the ventral aspect of the fronto-nasal process. *Wnt5a* transcripts were absent in FSNC-ablated embryos but present if the embryos were supplemented with FGF8 beads (not shown).

We then explored the expression of genes shown to play a role in alar plate patterning in the pre-otic brain. *Wnt1* transcripts are present in midbrain-hindbrain transition (15). In E2.5 normal embryos (n=4), *Wnt1* is expressed as a ring of cells abutting to the isthmic domain. From this point up to the diencephalon, *Wnt1* is also expressed along the dorsal mesencephalic midline except at the level of r1 (Fig. 2D). In FSNC-deprived embryos, the absence of NC-derived mesenchyme in the developing head coincided with the loss of *Wnt1* expression at the dorsal midline while some neuroepithelial cells, closely associated with the isthmus, remained weakly positive (n=7; Fig. 2E). FGF8 supplementation at the level of the ANR partly restored *Wnt1* expression in the dorsal diencephalic and mesencephalic neuroepithelium (n=13; Fig. 2F).

More rostrally, *Wnt8b* expression was described in the dorsal thalamus (16). In E2.5 normal chick embryos (n=10), *Wnt8b* expression was accordingly detected in the dorsal prosencephalic neuroepithelium and in the dorsal thalamus (Fig. 2G). In FSNC-deprived embryos, *Wnt8b* expression was lost (n=8; Fig. 2H). By contrast, FGF8 supplementation at the level of the ANR restored a normal pattern of *Wnt8b* in the dorsal thalamus (n=9; Fig. 2I). Therefore, it turns out that the rostral deployment of NCC along the pre-otic encephalic vesicles is required for *Wnt* gene expression at the di- and mesencephalic dorsal midline.

To further define brain defects taking place in the absence of FSNC, we looked at the normal expression patterns of transcription factors *Emx2*, *Pax6*, *Dlx2*, and *Otx2* at E4.5. These genes have been shown to play a critical role in brain development (17, 18, 19, 20, 21).

In normal brains (n=7), *Pax6* is expressed in the dorsal telencephalon (corresponding to the pallium) and in the dorsal diencephalon (Fig. 2J). In absence of FSNC (n=8), *Pax6* transcripts were detected in a limited caudal site in the remaining telencephalic structure and overexpressed in the diencephalon at the level of prosomere 3 (P3 ; 22) i.e., in the part of the diencephalon normally fated to give rise to the pre-thalamus that extends dorsally in embryos exhibiting an "open" brain (Fig. 2K). In FGF8-rescued brains, *Pax6* expression was restored in the dorsal telencephalon and diencephalon (n=7; Fig. 2L).

Emx2 is expressed in the dorsal telencephalon (fated to yield the pallium) and in a sharply delineated focus of positive cells in the hypothalamus of normal embryos (n=7; Supporting figure 4A,D). In the FSNC-ablated embryos, *Emx2* transcripts were present in the anterior lateral margin of the "open" telencephalic vesicle (n=8; Supporting figure 4B,E). Additionally, *Emx2* expression was also present in the region corresponding to P3 (Supporting figure 4F). In FGF8-rescued brains, *Emx2*

expression was detected in the dorsal telencephalon, thus restoring a normal pattern of transcript accumulation (n=8; Supporting figure 4C,F).

Dlx2 is expressed in the ventral telencephalon (i.e. in the ganglionic eminences, corresponding to the striatum and pallidum), in ventral thalamus (P3) alar plate and in the hypothalamus of normal brains (n=7; Fig. 2M). In FSNC-ablated embryos, *Dlx2* remained weakly expressed in a small focus restricted to the basal open neural plate (n=6; Fig. 2N). *Dlx2* was also found to be overexpressed in P3 like *Pax6* and *Emx2*. FGF8 treatment allowed *Dlx2* expression to be partly rescued in the ventral telencephalon, and normalized the expression pattern in P3 (n=6; Fig. 2O).

In normal embryos, *Otx2* transcripts are present in the mesencephalic neuroepithelium and, to a lesser extent, in the dorsal diencephalon (n=7; Supporting figure 4G). In FSNC-ablated embryos, *Otx2* expression was up-regulated and uniformly present rostrally to the isthmus in the mesencephalic and diencephalic neural plates (n=6; Supporting figure 4H). Following FGF8-soaked bead implantation, *Otx2* expression was recovered in the mesencephalic vesicle as well as in the dorsal diencephalon where it remained stronger than normal (n=6; Supporting figure 4I).

These data indicate that NCC deployment along the cephalic vesicles is responsible for signals essential for the pre-otic alar plate patterning. In order to figure out the role of the NC in this process, we hypothesized that NCC act by repressing ventral cues originating from the basal plate.

Shh expression is restricted to the basal plate of the mesen- and prosencephalon in normal developing brain at E4.5 (n=6). In addition, *Shh* is also expressed in the *Zona Limitans Intrathalamica* (ZLI) as a strand of alar plate cells that demarcate the posterior diencephalon (the pretectum and thalamus, corresponding to the prosomeres P1 and P2, respectively) from the anterior diencephalon (the prethalamus corresponding to P3) (Fig. 2P-Q). It has been shown that mispatterning of ZLI results in forebrain defects (23; 24). In FSNC-deprived embryos, the accumulation of *Shh* transcripts was considerably expanded at the expense of the prosencephalic alar plate territory (n=5; Fig. 2R-S). In contrast, in these embryos, FGF8 supply in contact to the ANR allowed the pattern of *Shh* gene expression to normalize (n=5; Fig. 2V-W). The question was raised of the gene expression status of the brains of embryos deprived of FSNC and r3-NC but subjected to FGF8 supplementation on the ANR. While in operated embryos, the pre-otic brain remains exencephalic (as shown in Fig. 1S), *Shh* transcript accumulation is not affected by the absence of migrating NCC in the forehead (n=6).

This indicates that the limitation of *Shh* expression to the basal plate in our experiments is constrained by the source of FGF8 in ANR and that the NCC are not directly involved in this process. In normal development, NCC act by inducing FGF8 production by ANR (5).

4. Structural telencephalic and thalamic defects caused by FSNC excision can be corrected by FGF8 supplementation.

In E8 FSNC-ablated embryos (i.e. 7 days after the operation), the telencephalon was very reduced in size : only a small part of the ventral telencephalon subsisted, but showed a poor histological organization (Supporting figure 5). The diencephalon and mesencephalon displayed important alterations at the dorsal level : the neuroepithelium exhibited an exencephalic organization and the thalamic and pretectal nuclei failed to develop. The dorsal defects which encompassed the optic tectum ended in the isthmus domain where the roof plate was present. However, the cerebellum showed weak structural defects, midline fusion and important depletion of external granular cells (Supporting figure 5).

When FGF8-soaked beads were implanted in contact with the ANR after NC ablation, telencephalic development in E8-embryos was basically restored since the telencephalon exhibited normal histological domains, including midline structures as the choroidal plexus (Supporting figure 5). The diencephalon developed normal prethalamus (P3), thalamic (P2) and pretectal (P1) structures, including the posterior commissure (Supporting figure 5), but the diencephalic choroidal plexus did not develop normally.

Discussion and conclusions

The results presented here show that the cephalic NF corresponding to the posterior diencephalon, the mesencephalon, and the anterior rhombencephalon (r1, r2) in which no genes of the Hox family are expressed and which is responsible for the development of the facial skeleton (9) is essential for the development of forebrain and midbrain. The embryos in which the NF from this level is removed exhibit exencephaly with an open NT in which the dorsal cephalic structures fail to grow and differentiate. Moreover, these embryos are deprived of their entire facial skeleton.

We have previously shown that early removal of the FSNC results in the loss of *Fgf8* in the ANR (5). This structure which differentiates from the margin of the neural plate, rostral to the limit where the NF produces NCC, has been demonstrated to play a critical role in vertebrate brain development. In mouse and zebrafish, this zone was shown to produce signals influencing telencephalic development and was considered as a *prosencephalic organizer*. *Fgf8* was identified to participate in this signal (23, 25, 26).

Here, we demonstrate that the negative effect of the removal of the *Hox*-negative NC on brain development can be overcome by treatment of the operated embryos with exogenous FGF8. Beads of FGF8 placed either on the ANR or on the presumptive BA1 ectoderm at 5-6ss induced the proliferation of the NCC exiting from r3. These r3-derived NCC were able to regenerate facial skeletal structures. They migrated in distinct flows according to the position of the FGF8 source. When the FGF8-soaked beads were located on the presumptive BA1 ectoderm, the NCC migrated ventrolaterally, hence replenishing the facial processes with skeletogenic mesenchymal cells. If FGF8 beads were implanted on ANR, the progression of NCC arising from the edge of the resected territory was directed not only to BA1 but also towards the fronto-nasal process. Thus, r3-derived cells migrated along the pre-otic cephalic vesicles as shown by HNK1 and *Twist* labelling, respectively. This observation indicates that FGF8 diffusion from its source, the ANR, extends down to the level of the mid-rhombencephalon since it increases significantly the number of NCC produced by r3. Moreover, the fact that the directionality of the NCC stream varies according to the position of the FGF8 beads means that they constitute a chemoattractive cue for these cells.

Interestingly, as shown in our previous study (5), NCC exert a positive effect on the production of FGF8 by the superficial ectoderm and the neuroepithelium in the ANR as well as by the BA1 ectoderm.

As far as the brain is concerned, the exogenous source of FGF8 and the rostral migration of r3-derived NCC allow closure of the NT to be maintained and the development of the telencephalon and of the alar plate derivatives of the mes- and diencephalic vesicles to proceed. R3-derived NCC, which carry the quail marker, have never been found to participate in the roof plate. Therefore, both alar plate and roof plate development depend upon a signal provided by the cephalic NCC. If the FSNC ablation includes r3-NCC, the embryos exhibit a wide-open brain even when supplemented with exogenous FGF8. In these embryos, r4-NF becomes the rostralmost source of NCC. R4-derived NCC are induced to migrate rostrally, but fail to reach either BA1 or the frontonasal bud. As a consequence, the lack of migrating NCC in the head precludes the dorsal closure of the NT.

The role of the NCC in cephalic roof plate development has been further documented by looking at the pattern of genes normally expressed in the pros- and mesencephalic primordium such as *Wnt1* (expressed from the mid-diencephalon to the posterior mesencephalic level) and *Wnt8b* (expressed more anteriorly). Following ablation of FSNC, exencephalic brains are devoid of *Wnt* transcripts (except for the accumulation of *Wnt1* m-RNA which is maintained rostrally to the isthmus). In the telencephalic primordium, the absence of NCC also impedes the expression of *Pax6*, *Emx2* and *Dlx2*; activation of these genes merely subsists as reminiscent autonomous foci meaning that the structures in which they are normally expressed either do not develop or do not mature properly. At the diencephalic level, *Otx2* expression is up-regulated as if this structure was posteriorized. Concurrently, a striking dorsalization of *Shh* transcript distribution occurs in di- and mesencephalon increasing the prosencephalic basal plate at the expense of the alar plate. Severe perturbations in gene expression at E4.5 foreshadow long-term structural defects recorded at E8. It turns out that the removal of NC ends up with the loss of dorsal telencephalon, and the agenesis of the thalamic and pretectal nuclei.

As previously mentioned, when the FSNC-deprived embryos were supplemented with FGF8-soaked beads placed on the ANR, FGF8 supply stimulated the proliferation and the migration of r3-NCC to the forehead. The progression of NCC driven by FGF8 was accompanied by the restoration of *Wnt1* and *-8b* expressions. This suggests that *Wnt* activation in the anterior roof plate relies upon NC-dependant signals. By contrast, specification of the dorsal midline structures such as choroidal plexus are only uncompletely restored in these experiments. Together with the restoration of roof plate identity characterized by expression of *Wnt* genes, NCC also concur to the patterning of the pallial and subpallial territories. NCC deployment is accompanied by the recovery of gene expression at these levels meaning that NCC are likely to impart signals required for the proper patterning of telencephalic markers.

In conclusion, the cephalic NC coordinates the formation of craniofacial structures and the development of fore- and midbrain. Its various roles are schematized in Figure 2X. The NC is at the origin of the still unknown signals which trigger and maintain the expression of *Fgf8* in the ANR. FGF8 of ANR origin exerts a positive effect on the proper patterning of the basal plate in the di- and mesencephalon as shown by the restriction of *Shh* expression to the ventral midline and ZLI. On the other hand, the NC has a direct effect on the development of the alar plate in the di- and mesencephalon and on patterning the roof plate.

Material and Methods

Quail and chick embryos were operated at the 5-6ss, corresponding to 24-29 hours of incubation at 38°C (i. e. HH8 ; 27). Bilateral excision of the FSNC were performed according to the fate map of the NF (28; Supporting information 6). FGF8-soaked beads (Sigma) were prepared as described (5) and implanted in contact with the ANR.

Hybridizations with *Snail2*, *Fgf8*, *Twist*, *Wnt1*, *Wnt5a*, *Wnt8b*, *Emx2*, *Pax6*, *Dlx2* and *Otx2* probes (19, 20, 21, 29, 30, 31) were performed as described (32, 33).

Acknowledgments

Authors thank Christine Vincent and Monica Rodenas for technical assistance. Authors are grateful to Drs Boncinelli, Delfini, Gruss, McMahon, Martin, Puelles and Simeone for graciously providing probes for *in situ* hybridation. Work in NLD's laboratory was supported by a Program Project grant from the Centre National de la Recherche Scientifique, Association pour la Recherche contre le Cancer (n° 3149). Work in SM's laboratory was supported by grants UE QLRT-1999-31625; QLRT-2000-02310; FCT/MCES; DIGESIC-MEC PM98-0056; BFI2002-02979; GV CTDIA/2002/91. S. C. was the recipient of a fellowship from the Fondation Bettencourt-Schueller.

References

1. Le Lièvre, C. S., & Le Douarin, N. M. (1975) *J. Embryol. Exp. Morphol.* **34**, 125-154.
2. Couly, G. F., Coltey, P. & Le Douarin, N. M. (1993) *Development* **117**, 409-429.
3. Graham, A., Heyman, I., & Lumsden, A. (1993) *Development* **119**, 233-245.
4. Graham, A., Francis-West, P., Brickell, P. & Lumsden, A. (1994) *Nature* **372**, 684-686.
5. Creuzet, S., Schuler, B., Couly, G. & Le Douarin, N. M. (2004) *Proc. Natl. Acad. Sci. USA* **101**, 4843-4847.
6. Kulesa, P., Ellies, D. L., & Trainor, P. A. (2004). *Dev. Dyn.* **229**, 14-29.
7. Couly, G., Grapin-Botton, A., Coltey, P., Ruhin, B., & Le Douarin, N. M. (1998) *Development* **125**, 3445-3459.
8. Couly, G., Creuzet, S., Bennaceur, S., Vincent, C. & Le Douarin, N. M. (2002) *Development* **129**, 1061-1073.
9. Creuzet, S., Couly, G. , Vincent, C. & Le Douarin, N. M. (2002) *Development* **129**, 4301-4313.
10. Grammatopoulos, G. A., Bell, E., Toole, L., Lumsden, A. & Tucker, A. S. (2000) *Development* **127**, 5355-5365.
11. Pasqualetti, M., Ori, M., Nardi, I., & Rijli, F. M. (2000) *Development* **127**, 5367-5378.
12. Chen, Z.-F., & Behringer, B. R. (1995) *Genes Dev.* **9**, 686-699.
13. Zuniga, A., Quillet, R., Perrin-Schmitt, F., & Zeller, R. (2002) *Mech. Dev.* **114**, 51-59.
14. Yamagushi, T. P., Bradley, A., McMahon, A. P., & Jones, S. (1999) *Development*, **126**, 1211-1223.
15. McMahon, A. P., & Bradley, A. (1990) *Cell*, **69**, 581-595.

16. Garcia-Lopez, R., Vieira, C., Echevarria, D., & Martinez, S. (2004) *Dev. Biol.* **268**, 514-530.
17. Walther, C., & Gruss, P. (1991) *Development*, **113**, 1435-1449.
18. Simeone, A., Acampora, D., Gulisano, M., Stornaiuolo, A., & Boncinelli, E. (1992) *Nature*, **358**, 687-690.
19. Bally-Cuif, L., Gulisano, M., Broccoli, V., & Boncinelli, E. (1995) *Mech. Dev.* **49**, 49-63.
20. Smith-Fernandez A., Pieau, C., Repérant, J., Boncinelli, E., & Wassef, M. (1998) *Development*, **125**, 2099-21111.
21. Puelles, L., Kuwana, E., Puelles, E., Bulfone, A., Shimamura, K., Keleher, J., Smiga, S., & Rubinstein, J.L.R. (2000) *J. Comp. Neurol.* **424**, 409-438.
22. Rubinstein, J.L.R., Martinez, S., Shimamura, K., & Puelles, L. (1994) *Science*, **266**, 578-580.
23. Houart, C., Westerfield, M., & Wilson, S.W. (1998) *Nature* **391**, 788-792.
24. Braun, M.M., Etheridge, A., Bernard, A., Robertson, C.P. & Roelink, H. (2003) *Development*, **130**, 5579-5587.
25. Shimamura, K. & Rubinstein, J.L. (1997) *Development*, **124**, 2709-2718.
26. Heisenberg, C.P., Brennan C., & Wilson, S.W. (1999) *Development*, **126**, 2129-40.
27. Hamburger, V., & Hamilton, H. L. (1951) *J. Morphol.* **88**, 49-92.
28. Couly, G., Grapin-Botton, A., Coltey, P. & Le Douarin, N. M. (1996) *Development* **122**, 3393-3407.
29. Nieto MA, Sargent MG, Wilkinson DG, Cooke J. (1994) *Science*. **264**, 835-9.
30. Crossley, P. H., Minowada, G., McArthur, C. A. & Martin, G. R. (1996) *Cell*, **84**, 127-136.
31. Holliday, M., McMahon, J. A., & McMahon, A. P. (1995) *Mech. Dev.* **52**, 9-52.
32. Henrique, D., Adam, J., Myat, A., Chitnis, A., Lewis, J. & Ish-Horowicz, D. (1995) *Nature* **375**, 787-790.
33. Etchevers, H. C., Vincent, C., Le Douarin, N. M. & Couly, G. F. (2001) *Development* **128**, 1059-1168.

Figures and legends

Figure 1 : Absence of cephalic NC entails exencephaly. (A-C) *Snail2* expression in cephalic NCCs. (A) At 6ss embryo, NC territory subjected for surgical extirpation is delineated with red arrowheads. (B) In 9ss unoperated embryo, NCCs migrated dorso-laterally can be evidenced with *Snail2* transcript detection while in stage-matched FSNC-ablated embryo (C), the lack of *Snail2* expression accounts for the absence of migrating NCCs in the developing head. (D, E) *Fgf8* expression in 24ss control (D) and FSNC-deprived (E) embryos showing the loss of *Fgf8* expression in ANR as a consequence of FSNC ablation. (F-I) Gross anatomy of E4.5 control (F, G) FSNC-deprived (H, I) embryos showing an extended exencephaly in operated (I), compared to stage-matched control (G). (J-L) Whole-mount HNK1 immunolabelling of E2.5 control (J), FSNC-deprived (K), and in FGF8-supplemented FSNC-deprived (L) embryos. While facial processes of FSNC-ablated embryo are devoid of NCC mesenchyme (except in trigeminal root ganglia), when supplemented with FGF8 in ANR, nasofrontal bud benefits from a massive stream of NCCs that arise from the margin of the excised territory and migrate along the upper aspect of anterior cephalic vesicles. (M-O) Whole-mount brain preparations dissected out from control (M), FSNC-deprived (N) and FGF8-supplemented FSNC-deprived (O) embryos at E6. In absence of cephalic NCCs, brain is exencephalic and partition into telen-, dien- and mesencephalon no longer recognizable (N). When stimulated with exogenous FGF8 in ANR, neural tube closure occurs and brain regionalization is restored (O). (P-S) Role of NCC in dorsal NT closure. (P) In FSNC-ablated embryos supplemented with FGF8 beads (in red), the development of the upper face and brain is restored (Q) while if NC excision is extended down to r3 included (R), embryos fail to develop facial structures and exhibit exencephaly (S).

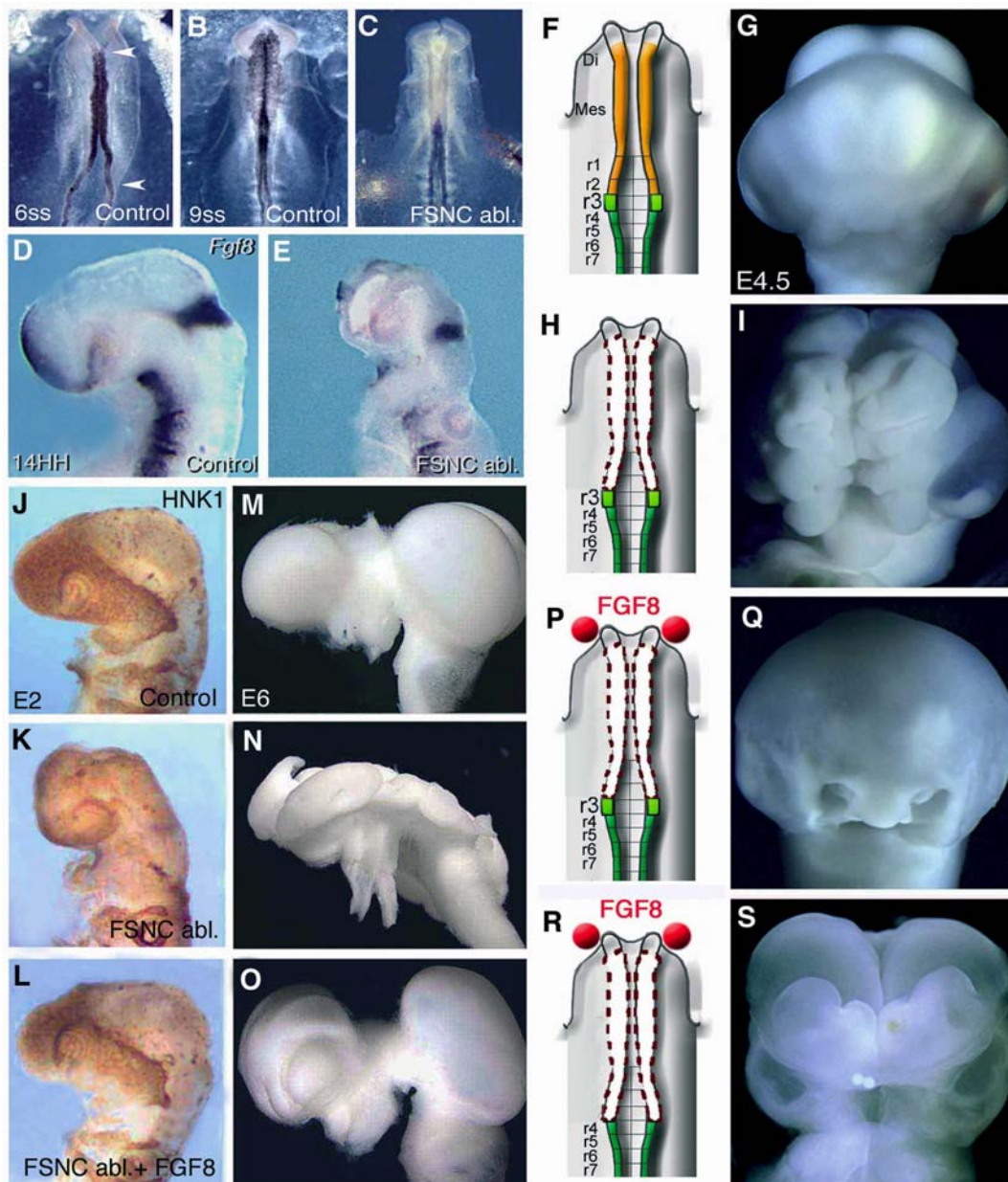
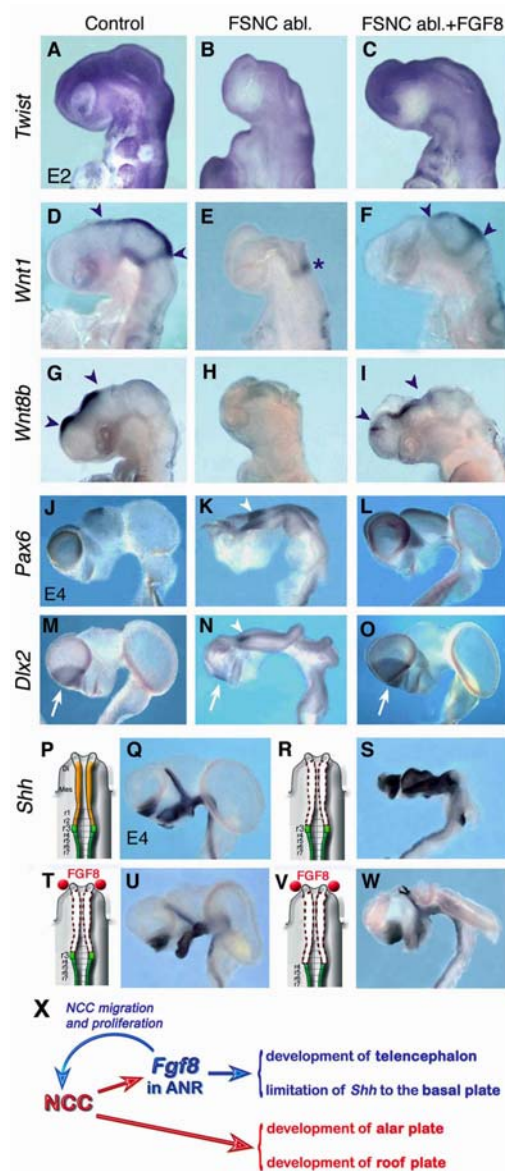
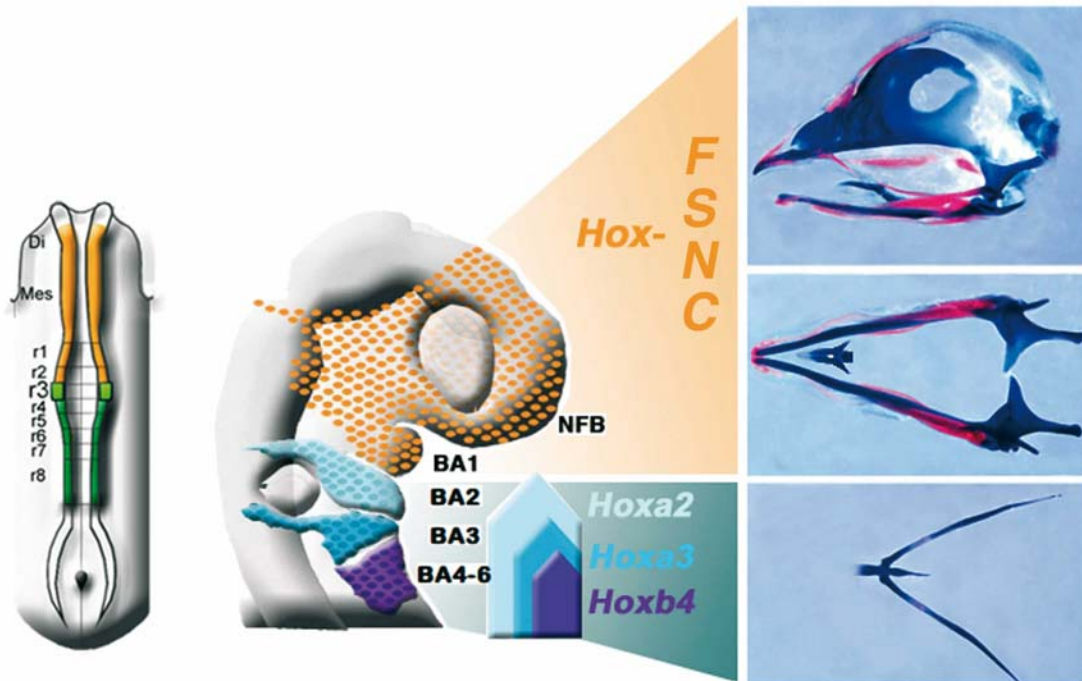


Figure 2 : NCC progression in the forehead territory restores brain patterning.

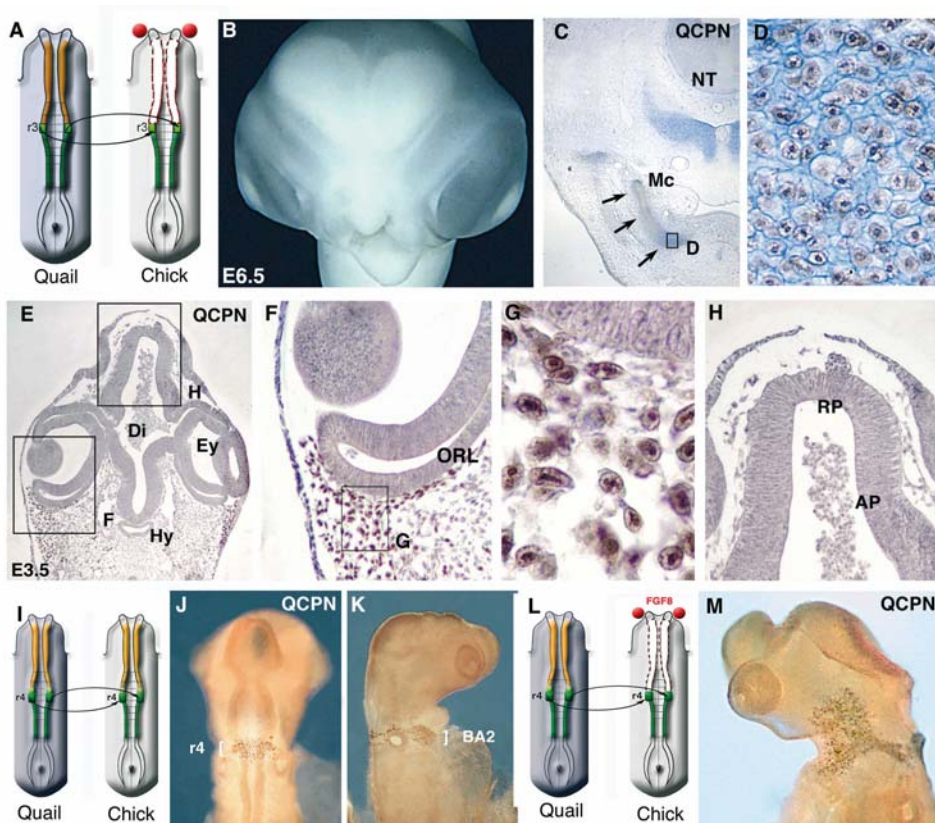
Gene expression in NCC and cephalic neuroepithelium in control (A, D, G, J, M, Q), FSNC-ablated (B, E, H, K, N, U), and FGF8-treated FSNC-ablated (C, F, I, L, O, S) embryos. (A-C) At 24ss, *Twist* is activated in NC that populate BAs and nasofrontal primordium along with the presumptive calvarial domain (A). In addition, a fringe of *Twist* labelled cells, likely devoted to the development of the calvarium was present on the dorso-lateral aspects of the cephalic vesicles. In stage-matched FSNC-ablated embryos, no *Twist* transcript is evidenced in the developing head (B). When supplemented with exogenous FGF8, embryos exhibit *Twist* expression in the nasofrontal region and an expanded expression domain latero-dorsally to the telencephalic and diencephalic vesicles (C). At 24ss, *Wnt1* expression in the dorsal mesencephalon and thalamus (D; arrowheads) is lost in absence of FSNC except at the level of the isthmus (E; asterix) but is restored when NCC progression is stimulated by FGF8 in ANR (F). Expression of *Wnt8b* in dorsal diencephalon and telencephalon (G; arrowheads) is abolished in absence of FSNC (H), but partly restored if embryos are treated with FGF8 (I). At E4.5, *Pax6* expression in pallium and dorsal diencephalon (J) is reduced in telencephalon but up-regulated in P3 (K; arrowhead) in absence of FSNC, while treating with FGF8 rescues normal pattern of expression in dorsal prosencephalic vesicles (L). At this stage, *Dlx2* expression in ganglionic eminence (M; arrow) is severely perturbed in FSNC-deprived embryos (N) : *Dlx2* remains as a small focus in telencephalon (N; arrow) and is overexpressed in P3 (N; arrowhead). Exogenous FGF8 restores *Dlx2* in telencephalon (O; arrow). In normal development (P, Q), *Shh* is expressed in the prosencephalic basal plate. In FSNC-deprived embryos (R), *Shh* transcript accumulation is expanded at the expense of the alar plate (S). With FGF8 supply (T), *Shh* expression tends to normalize. Suppressing r3 together with FSNC (V) in FGF8-treated embryos does not severely perturb the pattern of *Shh* expression while brain is exencephalic (W). (X) Schematic representation of the role of NCC in brain development.



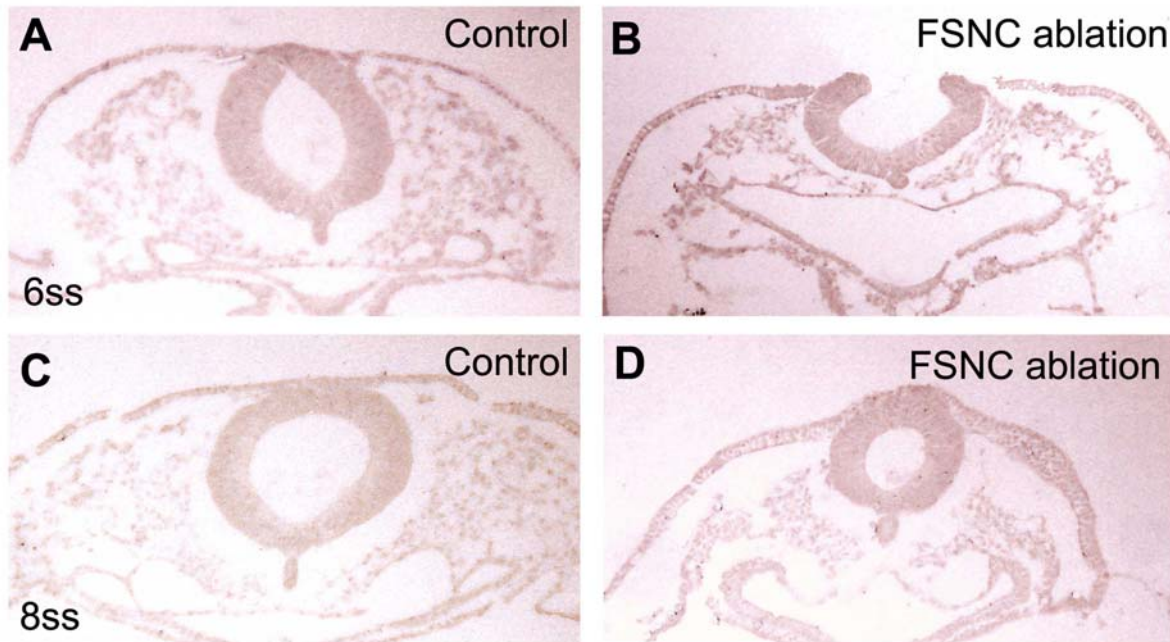
Supporting figure 1 : NCC domains according to the expression of Hox genes and their respective contribution to head skeleton. BA*n*, branchial arche; FSNC, facial skeletogenic NC; NFB, nasofrontal bud.



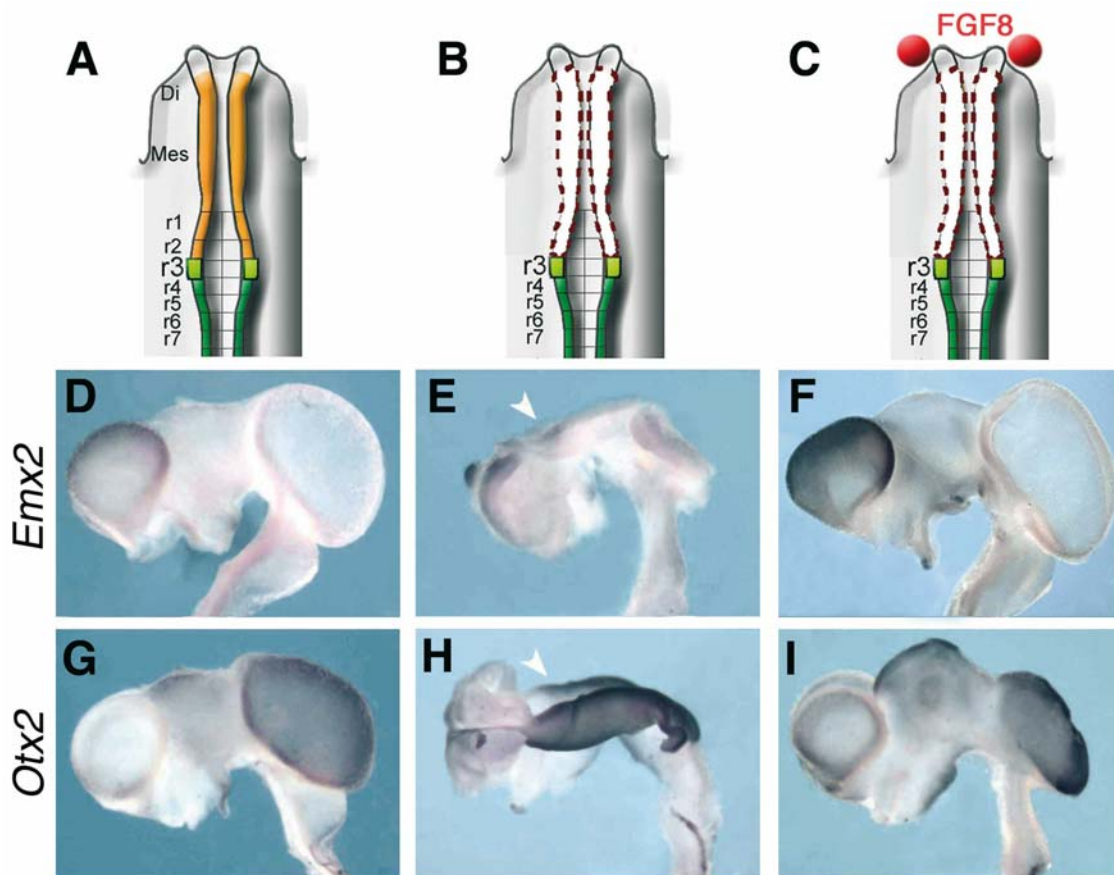
Supporting figure 2 : In FGF8-treated FSNC-ablated embryos, r3-NF is replaced by its quail counterpart (A). At E6.5, facial development is rescued and a transient hypertrophy of cephalic structures occurs (B). (C) r3-derived NCC form a mandibular skeleton (arrows) which is entirely made up of quail cells (D). While colonizing the forehead (E) with mesenchymal cells (F; as evidenced by QCPN labelling in G), r3-derived NCC do not take part to the cephalic roof plate (H). Replacement of r4-NF in normal chick embryo by its quail counterpart (I). At E2, NCC which migrate from r4 populate BA2 exclusively (K). If FSNC is removed together with r3-NC in FGF8-treated embryo (L), r4-NCC taken from quail embryo migrate as a small stream that fail to reach BA1. AP, alar plate; Mc, Meckel's cartilage; RP, roof plate.



Supporting figure 3 : Transverse sections of 6ss (A,B) and 8ss (C,D) of control (A,C) and FSNC-ablated (B,D) embryos. Few hours following NF excision at 6ss (B), cephalic NT closes in the absence of FSNC (D) as in control (C).



Supporting figure 4 : *Emx2* (D, E, F) and *Otx2* (G, H, I) expressions in E4.5 brains from control (A, D, G), FSNC-ablated (B, E, H), and FGF8-treated FSNC-ablated (C, F, I) embryos. Note the expression of *Emx2* in P3 primordium (arrowhead).



Supporting figure 5 : Coronal sections from control (A, B, C, D), FSNC-ablated (E, F, G, H) and FGF8-treated FSNC-ablated (I, J, K, L) embryos at E8. At the level of telencephalon (A, B), removal of FSNC results in the loss of dorsal telencephalic structures (E) while treatment with FGF8 restores the development of hemispheres (I, J). Note that the neuroepithelium is hypertrophied at this level. At the level of mid-telencephalon (B), the dorsal thalamic nuclei are lost in FSNC-deprived embryo (F, G), while their development is restored along with the formation of striatal and pallial structures (J, K). Note that the choroid plexus are only partly rescued.

Cx, dorsal cortex (dorsal pallium); DT, dorsal thalamus; e, eye; HV, hyperstriatum ventrale; Hy, hypophysis; Is, isthmus; MP, medial pallium; N, neostriatum; OB, olfactory bulb; oc, optic chiasma; Ote, optic tectum; PT, pre-thalamus; Rh, rhombencephalon; St, striatum; TEL, telencephalon; VT, ventral thalamus.

