



**HAL**  
open science

## Comparative analysis of the food webs of two intertidal mudflats during two seasons using inverse modelling: Aiguillon Cove and Brouage Mudflat, France.

Delphine Degré, Delphine Leguerrier, Eric-Armynot Du Chatelet, Jadwiga Rzeznik, Jean-Christophe Auguet, Christine Dupuy, Elise Marquis, Denis Fichet, Caroline Struski, Emmanuel Joyeux, et al.

### ► To cite this version:

Delphine Degré, Delphine Leguerrier, Eric-Armynot Du Chatelet, Jadwiga Rzeznik, Jean-Christophe Auguet, et al.. Comparative analysis of the food webs of two intertidal mudflats during two seasons using inverse modelling: Aiguillon Cove and Brouage Mudflat, France.. *Estuarine, Coastal and Shelf Science*, 2006, 69 (1-2), pp.107-124. 10.1016/j.ecss.2006.04.001 . hal-00096044

**HAL Id: hal-00096044**

**<https://hal.science/hal-00096044v1>**

Submitted on 6 Jan 2023

**HAL** is a multi-disciplinary open access archive for the deposit and dissemination of scientific research documents, whether they are published or not. The documents may come from teaching and research institutions in France or abroad, or from public or private research centers.

L'archive ouverte pluridisciplinaire **HAL**, est destinée au dépôt et à la diffusion de documents scientifiques de niveau recherche, publiés ou non, émanant des établissements d'enseignement et de recherche français ou étrangers, des laboratoires publics ou privés.

---

## Comparative analysis of the food webs of two intertidal mudflats during two seasons using inverse modelling: Aiguillon Cove and Brouage Mudflat, France

Delphine Degré<sup>a, b</sup>, Delphine Leguerrier<sup>a</sup>, Eric Armynot du Chatelet<sup>a, c</sup>, Jadwiga Rzeznik<sup>a</sup>, Jean-Christophe Auguet<sup>a</sup>, Christine Dupuy<sup>a</sup>, Elise Marquis<sup>a</sup>, Denis Fichet<sup>a</sup>, Caroline Struski<sup>a</sup>, Emmanuel Joyeux<sup>b</sup>, Pierre-Guy Sauriau<sup>a</sup> and Nathalie Niquil<sup>a</sup>

<sup>a</sup>Centre de Recherche sur les Ecosystèmes Littoraux Anthropisés (CRELA, UMR 6217 CNRS-IFREMER-Université de La Rochelle), Pôle Sciences et Technologie, Av Michel Crépeau, 17042 La Rochelle Cedex, France

<sup>b</sup>Réserve Naturelle de la Baie de l'Aiguillon, ONCFS-LPO, Ferme de la Prée Mizottière, 85450 Sainte-Radegonde des Noyers, France

<sup>c</sup>Université d'Angers, UPRES EA 2644, Faculté des Sciences, 2 Bd Lavoisier, 49045 Angers Cedex, France

\*: Corresponding author : [nniquil@univ-lr.fr](mailto:nniquil@univ-lr.fr)

---

### Abstract:

Inverse analysis was used to model the food webs of two intertidal mudflat ecosystems: Aiguillon Cove (AC) and Brouage Mudflat (BM) (south-western Atlantic coast, France). The aim of the present study is to describe and compare the functioning of these two ecosystems. The method of inverse analysis has been adapted in order to take into account, in a single calculation, two seasons: spring/summer (mid-March to mid-October) and autumn/winter (the rest of the year). Gathering all available data on the two sites, the most important gaps in knowledge were identified with the help of sensitivity analyses: they concerned mainly the exports of material by grazing fish (such as mullet *Liza ramada*), resuspension of microphytobenthos, and fluxes linked to microfauna which is poorly known for the two systems. The two sites presented the same overall type of functioning (net import of detritus, export of living organic material and higher faunal activity during spring/summer). In both ecosystems, primary production was dominated by the microphytobenthic production, of which a great part was exported via water-column advection and biotic vectors (grazing fish), while many secondary producers also used detritus as a food resource. Each system also had its own characteristics, one BM being much more seasonally driven than the other AC. It appeared essential to take the seasons into account, as variations in microphytobenthos production and in meiofauna, macrofauna and biotic vectors led to great differences in the food-web organisation

Résumé

**Keywords:** food web; steady-state; inverse analysis; tidal flat; sensitivity analysis; Atlantic coast

## 1. Introduction

European intertidal mudflats are considered as amongst the most biologically productive areas in the world (McLusky, 1989). Along the French Atlantic coast, Aiguillon Cove and Brouage Mudflat are known both for their shellfish culture (Gouletquer and Héral, 1997; Gouletquer and Le Moine, 2002), their role of nursery for juvenile fish within the Bay of Biscay (Le Pape et al., 2003 a,b), and feeding ground for shorebirds (Triplet et al., 2001). Each of those two areas is composed mainly of intertidal mudflats (Verger, 1968; Gouletquer et al., 2000). The purpose of the present paper is to describe and compare the functioning of these two close intertidal areas, addressing questions about their similarities and differences and about their seasonal dynamics.

In coastal management, it is necessary to describe holistically the ecosystem functioning (Jørgensen and Müller, 2000a). A good way to gather all the information on an ecosystem's biocenosis and assess the relationships between its various components is to build its food-web model (Winemiller and Polis, 1996). Inverse analysis (Vézina and Platt, 1988) allows complete food-web models to be constructed from ecological data too sparse to allow other means. However these models generally describe balanced food webs and all temporal variations are erased by an annual average. This is a drawback for European mudflats, which vary seasonally. The wintering season, when migratory shorebirds are the more numerous (Yésou, 1992), is characterised by lower primary production (Cariou-Le Gall and Blanchard, 1995; Blanchard et al., 1997; Guarini et al., 1998) and reduced secondary production (Bachelet, 1982; Essink et al., 1991). One way to represent such seasonal changes is to model separately the mean food web of each season, and then compare the functioning of the two periods (Baird and Ulanowicz, 1989; Donali et al., 1999). The problem of such a method is that the seasons are totally independent one from the other, and it is necessary to allow variation of the different compartments' biomass between the two seasons, even though the system will be at steady-state at the annual scale. Computing one season with a possible imbalance and then using it to constrain the other is not a satisfying solution either, because then, the computation of the first season takes the lead over the second one. It was thus decided to compute both seasons by a simultaneous calculation. Inverse analysis was adapted to take into account two seasons in an annual-balanced model which would include all the current knowledge about the two sites. The classical matrix calculation (Vézina, 1989) was modified by coupling matrices bearing information on the two seasons or general information. This inverse-analysis modelling allows 1- evaluation of fluxes between the trophic components about which there exists the least information, 2- investigation of which relationships between the trophic components are dominant and 3- demonstration, with the help of sensitivity analyses, of those components which are needed to improve our knowledge.

These two mudflats have not been studied with the same intensity during the past years from a species richness point of view (de Montaudouin and Sauriau, 2000) and only the trophic food web of the Brouage Mudflat has been modelled by Leguerrier et al. (2003, 2004). We propose here to go further in the comparison of the functioning of both intertidal areas by using more recent data obtained in the field and by improving the modelling method. Aiguillon Cove has never been the subject of a model and has been studied only for a shorter time but many data can be acquired today on its population densities and dynamics, from primary producers to top predators.

## 2. Materials and methods

### 2.1. Study sites and sampling

Located on the south-western Atlantic coast of France, the Charentais Sounds (Pertuis) are situated between the latitude N 45°50' and N 46°20' and the longitude W 1°00' and W 1°30' (Figure 1). The Brouage Mudflat (BM) and the Aiguillon Cove (AC) are protected from the direct ocean influence by Ile d'Oléron and Ile de Ré, respectively and influenced by estuarine transport through the Charente and Sèvre Niortaise rivers. These extended mudflats are similar to semi-enclosed macrotidal bays (Verger, 1968) and both of them are important international areas for wintering shorebirds (Joyeux, 2001).

[Figure 1]

#### 2.1.1. Brouage Mudflat

The Marennes-Oléron Bay is situated east to the Oléron Island and west to the mainland (Figure 1). It covers 180 km<sup>2</sup> of which 60 km<sup>2</sup> are constituted of mudflats. The most extended flat is the Brouage Mudflat (BM), situated in the eastern part of the bay that covers 40 km<sup>2</sup> (Gouleau et al., 2000). It has a relatively flat bottom slope (1:1000) and a very large tidal area (4.5 km wide) of which the middle part is covered with prominent bedforms described as 'ridges and runnels' (Gouleau et al., 2000). Current speeds can vary from 0.2 to 0.6 m.s<sup>-1</sup> (Bassoulet et al., 2000; Le Hir et al., 2000) but maximum current speeds may reach 1.2 m.s<sup>-1</sup> in spring tide (SHOM, 2001). Half of the lower part of the intertidal zone is covered by oysters from abandoned oyster parks; the other half is still being used for oyster culture. Here, was represented a mean square meter composed of 84% of "free" mudflat, and 16% covered with exploited oyster racks, which is the amount encountered for the whole bay (Lemoine, pers. comm.).

Both fauna and flora benthic communities from BM have been characterised (Sauriau et al., 1989, Cariou-Le Gall and Blanchard, 1995), and numerous data are available on its benthic ecology (see details in Leguerrier et al., 2003, 2004). The abundance of foraminifera was evaluated in March, June, October 2003 and February 2004, for 3 stations. The density of meiofauna (mainly nematodes) was also assessed at 3 stations, in April, July, October 2000 and January 2001 (Rzeznik-Orignac et al., 2003). The observation of their morphology (Rzeznik-Orignac et al., 2003) gave indices of their food regime during the two seasons according to the classification of Wieser (1953 in Rzeznik-Orignac et al., 2003). Population dynamics properties of the two main macrobenthic species, i.e. *Scrobicularia plana* and *Hydrobia ulvae*, were also estimated from month-to-month surveys (Degré et al., 2003; Hautbois et al., 2002).

Knowing the concentrations of material in the Marennes-Oléron Bay (phytoplankton and POC: RAZLEC database, sampled every two weeks: Soletchnik et al., 1998) (Table 1), it was possible to assess the inputs to the system from the Marennes-Oléron Bay (Table 2). Measures on the water column above the intertidal mudflat of Brouage are scarce. The pelagic bacteria counting permitted an evaluation of pelagic bacterial export during this season. For this, water samples were collected monthly at the ebb cycle of spring tide from April 2002 to April 2003. As no information was available for microzooplankton and to avoid letting free its exchanges by transport, a value of biomass from April 2002 in the close Loire plume, in the Bay of Biscay (Marquis, unpub. data) was taken into account.

### 2.1.2. Aiguillon Cove

The Aiguillon Cove (AC) is a large wadden (Verger, 1968) of 49 km<sup>2</sup>, of which 33 km<sup>2</sup> are constituted of mudflats and 11 km<sup>2</sup> of surrounding salt-marshes. Those salt-marshes and the neighbouring agricultural areas of the Marais Poitevin are drained by a dense network of small channels, which import freshwater in the cove in addition to the Sèvre Niortaise River (Figure 1). The cove is a semi-circular sedimentation basin for silts and clays, which are mainly trapped in its landwards parts (Verger, 1968). It has a gentler bottom slope and a larger mudflat on the southern than on the northern part (1.5:1000 vs. 1.8:1000 and 3.5 vs. 3 km respectively). The Aiguillon Cove receives oceanic inputs *via* the Pertuis Breton too. Current speeds averaged 0.2 to 0.6 m.s<sup>-1</sup> but maximum current speeds may reach 1.3 m.s<sup>-1</sup> over the mudflat in spring tide (SHOM, 2001).

Two systematic sampling surveys of 91 regularly spaced stations were performed during a week in March and October 2002 but only data from intertidal stations were used as carbon biomass information for the trophic food web model (Table 1). At each station, two sediment grab samples (Smith-McIntyre grab of 0.1 m<sup>2</sup>) were sieved through a 1 mm mesh. The retained macrofauna were fixed and stored in buffered formalin/seawater solution (4%) for determination and weighing (ash-free dry weight measured after 48h drying at 50°C and 4h ignition at 450°C). Sediment cores (0.0025 m<sup>2</sup>) were also sampled during each week of systematic sampling in March and October 2002. First, the concentration of Chlorophyll *a* in the first centimetre of those mud cores was measured. Second, the abundance of meio- and microfauna, especially nematodes and foraminifera, was estimated, following analytical protocols previously given by Rzeznik-Orignac et al. (2003) and Armynot du Chatelet et al. (2005).

The population dynamics of the “bivalves” compartment were also studied each month at two stations from January 2002 to April 2003 in order to evaluate the secondary production and elimination in this largest macrobenthic compartment in AC. Import and export fluxes were calculated by multiplying Chlorophyll *a* concentrations in the Breton Sound (bimonthly results from the REPHY database: Gailhard et al., 2002) or in the Sèvre Niortaise River (Direction Départementale de l’Environnement-Vendée, Cellule Qualité Environnement Littoral database) by estimates of tidal movement or the Sèvre output following the hydrodynamical model used for BM. Finally, consumption by shorebirds was evaluated on the basis of Wolff et al.’s (1975) equation and the monthly counting in AC by the managers of the Nature Reserve.

Use of geographical information system (GIS, ArcView 2.0) together with quantitative information on shellfisheries (Gouilletquer and Lemoine, 2002) allowed us to represent a mean square meter composed of 97% of “free” mudflat, 2% of “mussel culture” and 1% of oyster racks.

## 2.2. Inverse analysis

### 2.2.1. The method of inverse analysis

Inverse methods have been developed to solve the problem of the lack of available data when modelling various systems (Parker, 1994). In food-web modelling, the number of estimated parameters is generally far less than the number of not estimated parameters. Inverse analysis, as developed in ecosystem modelling by Vézina and Platt (1988), seeks to include all existing knowledge about a system in order to achieve the best estimates of food-web fluxes. The method requires that both the compartments and the possible fluxes linking them are defined in an *a priori* or conceptual model. This model defines the flows as the unknowns of our system. They are written as a vector called *r*.

Mass-balance rules are translated into linear equations between fluxes so that the system is in steady state. All available data from precise local measurements in the ecosystem are used to build a system of linear equations on the fluxes. The system of equations (mass balance and local information) is written:

$$A * r = b \quad (1)$$

where  $A$  is a matrix of coefficients and  $b$  contains the solution vector of the equalities.

Then less precise information, mainly data from similar sites and from laboratory experiments, lead to the building of linear inequalities concerning flows or physiological rates. The system of inequalities is written:

$$G * r \geq h \quad (2)$$

where  $G$  is a matrix of coefficients and  $h$  is the boundaries vector of inequalities.

Application of these constraints reduces the space for possible solutions but does not result in a unique solution. In order to select one solution (the solution vector), the least-square criterion is applied, i.e. the solution is that with the smallest Euclidian norm.

### 2.2.2. Coupling two seasons

The idea developed here was to couple the computation of the two seasonal food webs in the same calculation. The algorithm of the calculation remains the same as in Vézina and Platt 1988, but our new method proposes another way to build the different vectors and matrices. The new vector of unknowns, that will be named  $F$  hereafter, is composed of the two vectors  $F_1$  and  $F_2$ , which contain the flows of the two seasons (written as transposed vectors  $F'_1$  and  $F'_2$  in Figure 2). The mass balance equations are established for the whole year and determine a first set of equations (matrix of coefficients is  $A_e$  and right hand terms in  $b_e$ ). Another set of equations is built for each season and determines two matrices of coefficients:  $A_1$ ,  $A_2$  and two right hand vectors:  $b_1$  and  $b_2$ . Then a set of equations concerns annual information, for data determined two generally to have the seasonal variation, and defines the matrix  $A_g$  and the vector  $b_g$ . All these matrices are assembled as shown in figure 2, which allows defining an equation:

$$A * F = b \quad (3)$$

where  $A$  is the association of  $A_e$ ,  $A_1$ ,  $A_2$  and  $A_g$  as in figure 2 and  $b$  is an association of  $b_e$ ,  $b_1$ ,  $b_2$  and  $b_g$ .

The inequalities are defined for the two seasons, which allows the building of matrices  $G_1$  and  $G_2$  of coefficients, and the boundaries vectors  $h_1$  and  $h_2$ . Some inequalities apply on an annual basis, which defines the matrix  $G_g$  of coefficients and the vector  $h_g$  of boundaries. These matrices and vectors are associated as shown in figure 2 and define the set of inequalities:

$$G * F \geq h \quad (4)$$

where  $G$  is the association of  $G_1$ ,  $G_2$  and  $G_g$  as in figure 2 and  $h$  is an association of  $h_1$ ,  $h_2$  and  $h_g$ .

The resolution of (3) and (4) is done using the same algorithm as in Vézina and Platt (1988).

[Figure 2]

## 2.3. Integration of knowledge

### 2.3.1. The conceptual models

The conceptual (also called *a priori*) models were constructed on the bases on the knowledge described above. The two chosen seasons were: 1) “summer”: from March 15<sup>th</sup> to October 14<sup>th</sup> and 2) “winter”: from October 15<sup>th</sup> to March 14<sup>th</sup>. Hence, there was one season of 7 months and the other one of 5 months. This partition has been chosen to take into account the ecological parameters which are: 1) the wintering of migratory birds (which arrive in October and have all left in March); 2) the gastropoda which were more precisely studied (*Hydrobia ulvae*, Haubois et al., 2002, 2004), begin to reproduce in March; 3) the nematodes, which are more numerous in winter (Rzeznik-Orignac et al., 2003); and 4) the microphytobenthos which usually begins its high production in March (Guarini et al., 1998; Haubois et al., 2003).

The presented models counted each 16 equivalent compartments (compartments Table 1 and *a priori* fluxes Figure 3), which were: the benthic and pelagic primary producers (microphytobenthos on the sediment and, in the water column, ‘real’ phytoplankton and resuspended microphytobenthos), the benthic foraminifers, nematodes, bivalves (mainly *Scrobicularia plana*, *Macoma balthica*), annelids (mainly *Hediste diversicolor*, *Neanthes succinea* and *Nephtys hombergii*), gastropods (mainly *Hydrobia ulvae*), arthropods, shellfish culture (*Crassostrea gigas* and *Mytilus edulis* for AC, and *C. gigas* for BM), pelagic microzooplankton (ciliates and flagellates), mesozooplankton (mainly copepods), fish juveniles (mainly carnivorous fishes, especially juvenile flat fish *Solea solea*), adult grazing fish (mainly mullet *Liza ramada*), and shorebirds (mainly Dunlins *Calidris alpina*, Knot *Calidris canutus* and black-tailed Godwit *Limosa limosa*), and benthic and pelagic detritus, which also include the free and attached bacteria. The 106 *a priori* fluxes between those compartments have been determined on the basis of current biological knowledge. The knowledge on BM being more complete, the conceptual models were slightly different: for the computation, the BM detritus compartments were divided into dissolved organic carbon (DOC), particulate organic carbon (POC) and bacteria.

[Table 1] [Figure 3]

### 2.3.2. Translation of data as equations and inequalities

Estimations realised locally, on the two sites, were translated into equations and inequalities between fluxes of the conceptual model. All the data used for the computations were those used previously by Leguerrier et al. (2003, 2004). Table 2 and 3 contains the complements. Inequalities limiting biomass temporal variations were imposed (equal to the compartments biomass when not known). They concerned one season only, as equalities on the annual equilibrium were added and implied a null total variation.

The input and output flows of plankton and detritus by hydrodynamic transportation (Table 2) were estimated using simple physical equations. A 1D model was developed to compute tidal currents across Brouage mudflat. Following Roberts et al. (2000), who applied a similar model to explore the mudflat morphodynamics. It only considered the conservation of mass and accounts for the water inflow and outflow due to tidal elevation. The use of a 2D model and measurement of current velocity on Brouage mudflat proved that the major component was cross-shore (Le Hir et al., 2000; Bassoullet et al., 2000). Boundary conditions were provided by tidal harmonics (Service Hydrographique de la Marine Nationale, SHOM) and bed elevation was derived from bathymetric charts. The model was applied to compute the

average tidal exchange along the mudflats and the results were used to calculate the volume and the water exchange at the limit of the food web model.

[Table 2]

The net primary production (NPP) computed for the microphytobenthos was based on observations of the biomass changes during day-time emersion (Blanchard et al., 1998, 2002), and hence was assumed to be the Gross Primary Production (GPP) less respiration, grazing, natural mortality and ER (extracellular release) during this period (Guarini et al., 2000; Blanchard et al., 2001). The gastropod compartment, mainly *Hydrobia ulvae*, was supposed to accomplish 50% of its grazing during day-time emersion (because they were more likely to graze on the biofilm (Haubois et al., 2005), and that 25% of the other fluxes occurred during this period. Hence, the equation of NPP for microphytobenthos is (using the abbreviations given in Table 1 and the convention source  $\rightarrow$  sink):

$$\text{NPP} = 1 \text{ gC.m}^{-2}.\text{d}^{-1} = \text{GPP} - 50\% \cdot (\text{bphy} \rightarrow \text{bgas}) - 25\% \cdot \text{bphy} \rightarrow (\text{other living compartments} + \text{bdet} + \text{Resp}).$$

The value of  $1 \text{ gC.m}^{-2}.\text{d}^{-1}$  is a mean computed for the whole year and it was supposed to vary from  $1.1 \text{ gC.m}^{-2}.\text{d}^{-1}$  in summer to  $0.9 \text{ gC.m}^{-2}.\text{d}^{-1}$  in winter, respectively (Guarini pers. comm.).

The net primary production estimation for the phytoplankton varied between the two sites. In Brouage (Table 2), a physics-biology coupled model of primary production allowed a precise estimation of the mean seasonal value (Struski and Bacher *in press*). In Aiguillon Cove, as such estimation was missing; inequalities were estimated to give a range of realistic values (Table 3). This estimation used a ratio production / biomass from the English Channel (Menesguen et Hoch, 1997) and local values of phytoplankton biomass (data from REPHY network, Gailhard et al., 2002).

[Table 3]

Inequalities were set to give a range of realistic values for the diets of macrofauna compartments. The largest ranges of proportions for each diet cited in the literature were used, to take into account the spatial, inter-annual and seasonal variability. For example, the annelids diet was estimated by averaging the diet composition of the three main species: *Hediste diversicolor* ([50-100 %] carnivory included majority of nematodes, and minority of annelids, bivalves, arthropods, or mesozooplankton, and [30-50 %] detritivory included detritus and bacteria), *Neanthes succinea* ([50-100 %] benthic herbivory and [30-50 %] benthic detritivory) and *Nephtys hombergii* ([50-100 %] annelid carnivory, [30-50 %] benthic herbivory and [30-50 %] benthic detritivory). For bivalves, the diet composition range were set to [30-70 %] of benthic herbivory and [30-70 %] of pelagic herbivory. For arthropods, the ranges were [50-100 %] for benthic detritivory and [20-70 %] for benthic carnivory on total macrofauna.

## 2.4. Activity of compartments

The activity of each compartment was defined here as its entering Throughput. The Throughput of a compartment is defined as the sum of its entering or exiting flows, which are equal in the case of a steady-state system (Ulanowicz, 1986): as each season was unbalanced, and as our focus was on trophic exchanges, the activity of a compartment was defined as the sum of all biological inflow (excluding the physical ones). The detritus Activity was defined as the bacterial activity, i.e. the flux from the detritus compartment to itself. Hence this counted in the



meantime the bacterial uptake, the DOC release and the mortality by viral lysis (which is the main mortality cause), and the transformation of POC into DOC by bacterial action.

## 2.5. Sensitivity analyses

The sensitivity analyses were conducted with a double purpose: to assess the robustness of the result towards variations in the data, and to identify the effects of variations in the most sensitive data (Saltelli et al., 2000). These variations can be due to uncertainties or inter-annual variability of the data. The principle is to make the data element vary one by one and compute the corresponding new inverse analysis result (Jackson and Eldridge, 1992; Niquil et al., 1998; Vézina and Savenkoff, 1999). The method applied consisted in replacing all the equations by inequalities (boundaries being the limits of the confidence interval of the concerned parameters), and on imposing one equation: the one concerning the parameter tested. Then the inverse analysis solution to the new system was computed for various values of the parameter (5 from its reference value to its lowest, 5 from the reference to the highest), and for each tested parameter. This way, it was possible to test the influence of: total inputs, primary productions and resuspension of microphytobenthos, production by bivalves, grazing by gastropods and fish on microphytobenthos, and consumption by juvenile nekton and birds. A value for the resuspension of microphytobenthos was imposed by an annual equation, and it was varied between 0 and 100% of the net primary production. To test the grazing-fish consumption in AC, an equation was added and its result was varied between 0 and the value observed in the result of the computation. In all other cases, all the values were varied within the confidence interval of the constraints.

As input parameters were set to different ranges of values, it was necessary to create a homogeneous index to compare the effect of each parameter variation on each resulting flux. The relative variation in the resulting flux, normalized by the relative variation of the parameter, was computed. This was called the Sensitivity Index, SI. In the computation of those relative variations, the reference taken was the result obtained for the middle value of the datum (which was the one taken to build the corresponding equation in the food web model). Hence, the computation of the index is the following:

$$SI(P, R) = \left\langle \frac{\frac{R(s) - R_{ref}}{R_{ref}}}{\frac{P(s) - P_{ref}}{P_{ref}}} \right\rangle_s \quad (5)$$

where "P" stands for "tested parameter", "R" for "resulting flux", "ref" for "reference model" and "s" for "simulation variation number". For each parameter and each resulting flux, the SI was the mean obtained over all simulations, which is symbolized by  $\langle \rangle_s$ . This index corresponds to the ratio of the relative variation of the result to the relative variation of the parameter.

Considering that the computation of a "global tuning importance" of a parameter on more than one variable is equal to the sum of all "tuning importance" of this parameter to each of the variables (Solidoro et al., 2003), the sum of SI over all results R for one parameter P was computed. This index  $SI(P)$  gave the overall influence of this parameter on the results:

$SI(P) = \sum_R SI(P, R)$ . The same principle can be applied for the computation of the global

impact on one result:  $SI(R) = \sum_P SI(P, R)$

To complete this sensitivity analysis, another simulation was realised (results not presented here). The Brouage Mudflat model was re-estimated with a limited number of equations and inequalities, by suppressing all information not documented in Aiguillon Cove. This way, it was possible to check that the differences that were enlightened between the two ecosystems were kept, in tendency, when we use the same quantity of information.

### 3. Results

To enable comparison between the functioning of the two seasons, flux values (Tables 4 and 5) are given in  $\text{gC}\cdot\text{m}^{-2}\cdot\text{month}^{-1}$ , i.e. the results of inverse analysis, calculated by season, were divided by 7 for the summer season and by 5 for the winter season.

[Table 4] [Table 5]

#### 3.1. Null fluxes

All the fluxes of the *a priori* model being considered as probable fluxes, the estimation of null values indicates the poorly documented flows.

During summer, 33 fluxes were set to zero in the AC model, 25 in the BM model. During winter, 35 fluxes were set to zero in the AC model, 29 in the BM model. This is partly due to the fact that the BM model is more documented than the AC model and that the summer season is more documented than the winter season, for both sites. Almost all the null flows in summer were also null in winter. Indeed, most of the processed were better studied in warm than cold season.

The most concerned compartments, either as a source or a sink for these null flows, were the zooplankton (pmes) and especially the microzooplankton (pmic). Non-null ingestion flows of microzooplankton collapsed from summer to winter, as it had no activity during winter in either of the two models.

The other null values concerned several consumers (bivalves, annelids, arthropods, cultivated molluscs, juvenile fish and mullets). When no information was available on the quantitative diet of the consumer compartments, the availability of food sources concentrated the ingestion on a limited number among all the possible ingestion fluxes.

#### 3.2. Activities

The most active compartments for the two systems were the two detritus compartments (benthic for BM, pelagic for AC) (Figure 4). The most active living compartment was the microphytobenthos in all cases but one: the BM model in winter, where the cultivated oysters were more active. Nematodes were the next most active compartment for BM. In AC, they were also active but less than mullets during both seasons, and than bivalves during summer. The exportation by mullets equals 30 % of their activity, thus representing a high value in AC ( $7$  and  $6 \text{ gC}\cdot\text{m}^{-2}\cdot\text{month}^{-1}$  for summer and winter, respectively). The bivalves and foraminifers had similarly high activity values among benthic animals. The shellfish culture had a greater activity in BM than in AC, while it was the contrary for the grazing fish. The other activities were of the same order of magnitude in the two systems.

[Figure 4]

The differences of compartment activities between the two seasons were in most cases a decrease in activity from summer to winter. Only 11 fluxes were more important in winter than in summer for AC model, and 28 for BM model. Those fluxes concerned in particular the shorebirds' activity in both systems (which was higher by 139% in AC and 198% in BM), the shellfish culture activity in both systems (+ 19% and + 218% in AC and BM respectively), and, in BM only, the nematodes and benthic detritus activity (raises of 25% and 7% were observed, respectively). The activities of shorebirds, despite their marked increase from summer to winter, were the smallest ones in both systems.

The sum of all flows (Table 6) was the highest for BM during winter, followed by BM during summer, then AC in summer and AC in winter. The greatest part corresponded to physical flows, especially imports and exports of detritus. Concerning the biological flows between compartments in the benthos, BM presented more activity than AC, and summer than winter, for both systems.

[Table 6]

### 3.3. Seasonal changes in the diets

The seasonal changes not only affected the compartment activity, but also concerned the diet of some animal compartments (Table 5). The diet of nekton juveniles, for example, was exclusively based on bivalves in AC, but, in BM, the consumption on arthropods during summer was reported on bivalves during winter. The grazing fish, which kept a roughly equilibrated diet between microphytobenthos and detritus in AC, changed their exclusively herbivorous diet during summer to prey on nematofauna during winter in BM. They can enter then into competition with annelids, which transferred 20% of their diet to the nematodes instead of on other annelids ("cannibalism"). Overall, the diets were more concentrated on detritus than autotrophs in all the 4 situations. The detritivory/ herbivory ratio was higher in winter than in summer (Table 6). This seasonal difference was less marked than the inter-site difference, BM having the highest ratios for the two seasons.

### 3.4. Net export from the two systems

Over a complete year, the systems being in equilibrium, the overall import (physical imports + gross primary production) were equal to the overall export (physical exports + burial + respiration). Yet, slight differences appeared within each season (Figure 5): the two systems tended to show overall net import of material during summer and overall net export during winter. However, a net physical import of material from the water column must be noted for the two sites and during the two seasons. The quality of this material is shown in the figure 5: in proportion, the exports were enriched in living material when compared to the imports. In absolute values, the export of living material (phyto- and zooplankton) was greater than the import for AC during summer (living export: 33.7 vs. import: 23 gC.m<sup>-2</sup>.month<sup>-1</sup>), and for BM during both seasons (35.2 vs. 34.4 and 17 vs. 16 gC.m<sup>-2</sup>.month<sup>-1</sup> during summer and winter respectively).

[Figure 5]

### 3.5. Sensitivity analyses

In both systems, bivalves' production greatly influenced the results (Figure 6). In AC, the oceanic inputs were the most influential parameter. During both seasons, their value was

positively correlated with all the fluxes linked to detritus. In BM the most influential parameter was the shellfish culture. The difference between the influence of total shellfish data and the one of production alone represented the influence of respiration and pseudo-faeces, which is hence as influential as shellfish production alone in relative terms. Net primary production was very influential in the AC system, a little less so in BM, and it had more impact during summer than during winter. Consumption by birds was of very low relative importance in the two systems, and influenced only the diets of juvenile fish. The figure 6 also shows that the resuspension of microphytobenthos is a model output that had a high impact on the computation of other fluxes in the system. It was also a flow value that was very sensitive, being impacted by nearly all the tested parameters in both systems and more in BM than in AC. In all cases, the grazing by mullets had a significant impact on microphytobenthos resuspension, on the annelids' compartment, and on the nematodes' grazing on microphytobenthos.

[Figure 6]

## 4. Discussion

To discuss the results, one needs to keep in mind the various hypotheses and assumptions made to build the steady-state models. Some of the results could be artefacts due to the method itself, in particular in view of the least square solution principle (Vézina, 1989) which, combined with too poorly constrained fluxes, might lead to results open to criticism (Niquil et al., 1998; Leguerrier et al., 2003). Hence, the results concerning the microzooplankton will not be discussed here because it is a mathematical artefact that the consumption in this compartment occurred only during summertime. Indeed, due to a lack of data, this compartment was only annually constrained. Similarly, with diets in compartments too poorly constrained, they reveal only the availability of their prey items (Leguerrier et al., 2004). As any available data were used to build the inverse analysis model, it is not possible to assess directly its validity, and the results must be considered with some caution. However, comparison of our model results with published data allowed us to ascertain whether their order of magnitude was consistent with reality (Chardy and Dauvin, 1992), and sensitivity analyses helped us to identify the most missing data, and thus design forthcoming sets of measurements.

### 4.1. Importance of grazing fish

Grazing fish had an important activity and constituted a privileged export pathway for locally produced microphytobenthos and benthic detritus. But, without any available quantitative data, they were nearly totally unconstrained in the model. Laffaille et al. (2002) measured that mullets exported 8% of their fresh body weight, during each tide where they can reach the salt marsh creeks of Mont Saint-Michel bay (43% of the tides). 31% consisted of organic matter. In the present case, supposing that they feed equally during day and night (Morrison et al., 2002), that would mean a grazing fish concentration of 364 g fresh weight.m<sup>-2</sup> in AC and 78 g fresh weight.m<sup>-2</sup> in BM which is unrealistic (Parlier pers comm.). Hence, it could be useful to assess: (1) the actual mullet densities on each mudflat, (2) their grazing on microphytobenthos over the whole year (the experiments in Brouage were conducted from March to June and extrapolation was made on the basis of general observations).

Qualitatively, the obtained diet of the mullets was dominated by microphytobenthos and/or detritus, is conform to diets studied in other sites (e.g. Bruslé, 1981; Laffaille et al., 2002, Almeida, 2003).

## 4.2. Importance of microphytobenthos resuspension

As underlined in the sensitivity analysis result, the microphytobenthos resuspension has a high impact on the computation of other fluxes and is also the most influenced flux. Indeed, this flux is simultaneously directly linked to microphytobenthos production and consumption by grazing-fish and nematodes and indirectly to consumption of phytoplankton (shellfish production).

The results show low rates of resuspension compared to NPP, during summer, only 6.3% and 3.4% in AC and BM respectively, and high ones during winter, with 30% and 29% respectively. This is consistent with the fact that winter is a more perturbed season in terms of meteorological conditions which may increase potential resuspension, and the observation that microphytobenthos contribution to pelagic communities increases from 1% to 50% during winter (Guarini et al., 2004).

Considering a biofilm concentration of  $1.25 \text{ gC.m}^{-2}$  (Guarini et al., 2000), the obtained values represented 1.4 biofilms resuspended per month in summer and 5.2 in winter for AC, and 0.9 and 5.6 in BM. These values are probably underestimated, according to the current conceptualisation of the biofilm functioning in algal dynamics models (Guarini et al., 2000), but further analyses are needed to accurately estimate this flow. Moreover; bioturbation by benthic macrofauna e.g. *Hydrobia ulvae* (Orvain et al., 2003) and *Scrobicularia plana* (Orvain, 2005) can also enhance resuspension in general, and resuspension of consolidated biofilm in particular (Orvain et al., 2004).

## 4.3. Difficulties in evaluation of macrofauna production

Macrofauna compartments are preyed upon by shorebirds and fish juveniles. Yet, as the flux from macrofauna to detritus merged faeces and natural mortality, it is difficult to ascertain from the results the exact production value, which included natural mortality. In the literature, most P/B values do not include all the effective production of macrofauna (Bachelet, 1982). Apart for the bivalves, whose population dynamics have been studied on the two mudflats, the effective production of other macrofauna compartments might have been underestimated. Indeed, in the present food-web definition of “production”, the elimination term E should be included (Bachelet, 1982). This term might not be a production value for the population itself, but it is transferred to the trophic web. It is not clear what is really taken into account in many of the assessments of P/B ratios. Here, the annual averages might have smoothed all small scaled variations and above all the elimination term. Another problem is the variability of P/B rates: they may cover a large range of values according to habitat, number of age classes and, above all, relative importance of each cohort (Bachelet, 1982). To avoid the last of these problems, were imposed inequalities on the macrofauna compartment, obtained with the widest possible range of data taken from the literature. As maximal values are reached by the arthropod production in AC and annelids production in BM those results should be clarified in the field.

## 4.4. Weak control by top predators

In each ecosystem, the higher levels (shorebirds and fish juveniles) seemed at first sight to have little or no impact on the ecosystem functioning because their activities were the lowest ones. Yet, they are at the highest trophic level, and hence this index might not be the most revealing one to describe their position in the ecosystem, as advanced by Meire et al. (1994). These authors observed in the Oosterschelde Estuary that even though the roles of birds in the carbon balance of the estuary was rather small, their impact on their population prey may however be important. Even though a comparison to the production might be more accurate, the ratio between bird consumption and macrofauna biomass can be used as an index of predation

pressure (Meire et al., 1994). The obtained levels were relatively high in BM: 11% of the macrofauna biomass was preyed upon during summer and 23% during winter. In AC, the rates were lower: 1% and 2% respectively. The BM value (34% per year) approaches the ones obtained by Meire et al. (1994) in the Oosterschelde Estuary (30 to 37%). Dierschke et al., (1999a) considered that their obtained value in the southern Baltic Sea (14 to 28% per year) were low, but that such a predation could locally deplete some populations of the fragmented study area. The main activity of shorebirds on mudflats is their feeding (Burger et al., 1996), and various studies have shown that they might have a substantial impact on their invertebrate prey (Daborn et al., 1993; Masero et al., 1999; Dierschke et al., 1999a, b; Zharikov and Skilleter, 2003), or even that their intertidal habitat might not provide enough resources to sustain their populations (Smart and Gill, 2003). On BM, shorebirds have been observed to ingest smaller and smaller annelids as they depleted the stock of bigger ones (Boileau and Corre, 2003). However, it has conversely been argued that the shorebird populations might not systematically control benthic prey populations (Wilson and Parker, 1996).

Contrary to shorebirds, juvenile fish ate more during summer than during winter in relation to their respective life cycle. The total fraction of macrofauna biomass preyed upon by juvenile fish reached 3.3% and 1.1% during summer and winter in AC and 89% and 28% during summer and winter respectively in BM, which lead to an annual consumption of 16% and 137% of macrofauna biomass in AC and BM respectively. These values seem very high, and would necessitate a high secondary production to be sustained. Both AC and BM are known as nurseries (Le Pape et al., 2003b; Guérault et al., 1996) and so might well be exploited by this compartment at an important rate also. The role of mudflats for juvenile soles has been emphasized in the Bay of Biscay, but above all for their habitat characteristics and importance for sole recruitment (Le Pape et al., 2003a, b). Besides, juvenile fish might prey also on meiofauna (Castel and Lasserre, 1982; Marinelli and Coull, 1987; Amara and Bodin, 1995), and hence have a wider range of feeding opportunities all year round. As the model showed no predation of juvenile fish on meiofauna, one can suppose that there is still a food reservoir, but with the restriction that they might enter into competition with other predators of meiofauna.

Hence, the conclusion is that the impact of shorebirds and juvenile fish is lower in AC than in BM, and that further studies on macrofauna production would be useful.

#### **4.5. Comparison of seasonal coupling in the two systems**

The contrast between the two seasons in BM, which could not previously be observed with the year-round average modelling (Leguerrier et al., 2003, 2004), emphasized the usefulness of dividing the year into two complementary periods. Indeed, BM presented two much contrasted seasons, whereas AC seemed to be functioning more homogeneously throughout the year.

The warm season appeared as the main producing season. Variation in living biomass was positive for the two systems during summer, with a decrease only in the gastropod population in AC, and in the nematode, annelid and arthropod populations in BM. It is interesting to note that annelids and nematodes were amongst the most impacted compartments according to the sensitivity analyses carried out on BM, as were gastropods for AC. A decrease is also observed in the amount of pelagic detritus in winter and of benthic detritus in summer on BM, whereas the summer is a season of (pelagic and benthic) detritus accumulation in AC. This is linked to the inputs which were more important during summer than during winter for AC and greater in winter than in summer in BM.

The two systems are very similar in term of surface, sediment type or current speed, and differ a few on mudflat morphology (ridges and runnels on the BM mudflat and gentler bottom slope than on the AC mudflat). But those little differences in mudflat morphology had no

significant consequence on the benthic activities of microphytobenthos, nematodes, foraminifera or macrofauna. The major difference between the two systems is the amount of shellfish culture. The importance of oysterculture on BM induces trivially a greater activity of cultivated bivalves, but also a greater benthic detritus accumulation on BM than on AC. However the activity of mullets seemed greater on AC than on BM, even if this result came only from model calculation and should be verified in field.

The food-web organisation also changed between summer and winter. Indeed, the nematode populations are more numerous in winter than in summer (Rzeznik-Orignac et al., 2003), contrary to what is supposed for macrofauna. The nematode dynamics have been studied in BM (Rzeznik-Orignac et al., 2003), but not in AC, and the sensitivity analyses showed that grazing rate by nematodes had a significant impact on the results: the question is whether, with more information on this compartment, different patterns would be observed in AC. It had already been demonstrated that nematodes are an important compartment for benthic communities (Gerlach, 1971), at the detrital level (Escaravage et al., 1989), in the transfer of material towards higher trophic levels (Coull, 1990). It is emphasized here that they may also play a structural role by forcing the trophic organization of the ecosystem. Schmid-Araya et al. (2002) suggested that meiofauna play a key role as intermediate between trophic levels and that adding this compartment in a conceptual model highly increases its complexity. Hence, in the choice of aggregation level in the conceptual model, meiofauna should not be omitted. These observations on meiofauna, macrofauna and predators underline the necessity of coupling two seasons in the modelling of a food web, provided that enough information is available to characterize the seasonal patterns of the populations.

#### 4.6. Global functioning

The overall activity (sum of all the fluxes) in BM was 1.5 times higher than in AC, because of the greater benthic activity in BM than in AC (Table 6). However the two mudflats presented similar global functioning, with a net organic-carbon import from the ocean, net export of primary production, a predominance of benthic primary production over pelagic primary production due to their high turbidities (Blanchard and Cariou Le Gall, 1994) and dominating consumption on detritus. Like the benthic system in the Bay of Saint-Brieuc (Chardy et al., 1993), but with a much higher benthic primary production, they both imported material from the water column. The benthic-pelagic ecosystem annually used 28% of the imported pelagic material in AC, 7 % in BM, and 54% in the Bay of Saint Brieuc benthic ecosystem.

However, these imports and exports were different in terms of proportions of phytoplankton, zooplankton and detritus. In both systems and for both seasons, the imports presented a higher percentage of non-living material than the exports. Comparison with other results from the literature showed that this is not always the case in estuaries. Indeed several estuaries present net quality importations (e.g. Kromme Estuary *in* Baird et al., 1991, Swartkops and Ythan Estuaries *in* Baird and Ulanowicz, 1993, or Seine Estuary *in* Rybarczyk and Elkaïm, 2003). The ratio of detritivory over herbivory shows that detritivory is high in the two systems (Table 6), and especially in BM. The BM values (6 during summer and 7.5 during winter) are close to what had been estimated for the Chesapeake Bay (6.90 *in* Monaco and Ulanowicz, 1997). In comparison, lower values had been observed in the Seine Estuary (2.52 *in* Rybarczyk and Elkaïm, 2003) or Delaware Bay (3.4 *in* Baird and Ulanowicz, 1993), but higher values had been calculated for Narragansett Bay (8.10), Swartkops Estuary (10.2) Ythan Estuary (13.26), Kromme Estuary (22.5) (*in* Baird and Ulanowicz, 1993).

This description of the functioning of these two close estuarine systems underlines the central role of detritus imports and microphytobenthic primary production. These two elements

are closely related to the geography of the two sites. The river inputs are the main entry of non-living organic carbon. The surface of the mudflat determines the quantity of primary producing diatom biofilm. These two elements are essential for the functioning comparison between ecosystems. The river inputs play directly on the available detritus, shown to be essential organic carbon elements in the functioning of estuarine systems (Mc Lusky, 1989). Recent food web models also show that detritus consumption flows play a major role in increasing the ecosystem stability and persistence (Moore et al., 2004). The other main source of organic carbon is the primary production by the microphytobenthos. The surface of intertidal mudflat is a key factor in controlling this production at the ecosystem scale. This is why the observation of the decrease of this producing area could be of great consequence on the ecological functioning of the ecosystem (Dauvin and Desroy, 2005). The interaction with areas, either connected to the intertidal ecosystem by physical exchanges (mainly an enrichment of microphytobenthos), or by biotic vectors (fishes and birds), could also lead to a larger extent of this consequence.

## 5. Conclusion

Two ecosystems, known to different extents, were modelled and compared. The differences and similarities agree with the current knowledge about the 2 sites and raise new questions that will be addressed in further field experiments. For example, the differences in the level of knowledge suggested new investigations on the mullet compartment. From the points of similarity observed at the two sites, an overall description of the two systems can be sketched: 1) they were sensitive to inputs from both rivers and ocean. The "tidal pump" (so called after Odum, 1980) is illustrated by material supplying, mixing and water column renewing. 2) The exchanges with the "outside" show, at an annual scale, net imports of detritus and net exports of phytoplankton, micro- and mesozooplankton. This corresponds to a net export of quality during each season. 3) During both seasons, detritivory was the most important diet in both systems which also showed a high diversity of resource utilization.

## Acknowledgement

This work was supported by grants from ONCFS on shorebirds and benthos interactions (D. Degré PhD grant), from IFREMER on fisheries and bivalve culture interactions (D. Leguerrier PhD and N. Niquil Program grant), from the French Ministry of Research (ACI-ECCO) and of Agriculture – ENGREF (D. Leguerrier PhD grant). We thank T. Pineau (mussel farmer in AC) for the sampling on board of the KTEMA, and M. Breret, F. Mornet and P. Pineau (CREMA technicians) for their help to D. Degré in sampling and analysing cores in AC. We also thank Ian Jenkinson for correction of the English, and Pierre-Yves Pascal for useful discussions about the manuscript.



## References

- Almeida, P.R., 2003. Feeding ecology of *Liza ramada* (Risso, 1810) (Pisces, Mugilidae) in a south-western estuary of Portugal. *Estuarine, Coastal and Shelf Science* 57, 313-323.
- Altenbach, A.V., 1992. Short term processes and patterns in the foraminiferal response to organic flux rate. *Marine Micropaleontology* 19, 119-129.
- Amara, R., Bodin, P., 1995. L'environnement trophique méiobenthique en dehors des nourriceries côtières est-il favorable à l'installation de jeunes soles? *Oceanologica Acta* 18, 583-590.
- Armynot du Chatelet, E., Debenay, J.-P., Degré, D., Sauriau, P.-G., 2005. Utilisation des foraminifères benthiques comme indicateurs de paléo-niveaux marins ? Etude du cas de l'anse de l'Aiguillon. *Comptes Rendus Palevol.* 4, 209-223.
- Bachelet, G., 1982. Quelques problèmes liés à l'estimation de la production secondaire. Cas des bivalves *Macoma balthica* et *Scrobicularia plana*. *Oceanologica Acta* 5, 421-431.
- Baird, D., Ulanowicz, R.E., 1989. The seasonal dynamics of the Chesapeake Bay ecosystem. *Ecological Monographs* 59, 329-364.
- Baird, D., Ulanowicz, R.E., 1993. Comparative study on the trophic structure, cycling and ecosystem properties of four tidal estuaries. *Marine Ecology Progress Series* 99, 221-237.
- Baird, D., McGlade, J.M., Ulanowicz, R.E., 1991. The comparative ecology of six marine ecosystems. *Philosophical Transactions of the Royal Society of London. Series B. Biological Sciences* 333, 15-29.
- Bassoullet, P., Le Hir, P., Gouleau, D., Robert, S., 2000. Sediment transport over an intertidal mudflat: field investigations and estimation of fluxes within the "Baie de Marennes-Oléron" (France). *Continental Shelf Research* 20, 1635-1653.
- Blanchard, G.F., Cariou-Le Gall, V., 1994. Photosynthetic characteristics of microphytobenthos in Marennes-Oléron Bay, France: preliminary results. *Journal of Experimental Marine Biology and Ecology* 182, 1-14.
- Blanchard, G.F., Simon-Bouhet, B., Guarini, J.-M., 2002. Properties of the dynamics of intertidal microphytobenthic biomass. *Journal of the Marine Biological Association of the United Kingdom* 82, 1-2.
- Blanchard, G.F., Guarini, J.-M., Richard, P., Gros, P., 1997. Seasonal effect of the relationship between the photosynthetic capacity of intertidal microphytobenthos and temperature. *Journal of Phycology* 33, 723-728.
- Blanchard, G.F., Guarini, J.-M., Bacher, C., Huet, V., 1998. Contrôle de la dynamique à court terme du microphytobenthos intertidal par le cycle exondation-submersion. *Compte Rendu de l' Académie des Sciences de Paris, Sciences de la vie / Life Sciences* 321, 501-508.
- Blanchard, G.F., Guarini, J.-M., Orvain, F., Sauriau, P.-G., 2001. Dynamic behaviour of benthic microalgal biomass in intertidal mudflats. *Journal of Experimental Marine Biology and Ecology* 264, 85-100.

- Boileau, N., Corre, F., 2003. Densité hivernale et régime alimentaire du pluvier argenté *Pluvialis squatarola* dans le Centre-Ouest de la France. *Alauda* 71, 3601.
- Bruslé, J., 1981. Food and feeding in grey mullets. In: Oren, O.H. (Ed.), *Aquaculture of grey mullets*. Cambridge University Press, Cambridge, pp. 185-217.
- Burger, J., Niles, L., Clark, K.E., 1996. Importance of beach, mudflat and marsh habitats to migrant shorebirds on Delaware Bay. *Biological Conservation* 79, 283-292.
- Cariou-Le Gall, V., Blanchard, G.F., 1995. Monthly HPLC measurements of pigment concentration from an intertidal muddy sediment of Marennes-Oléron Bay, France. *Marine Ecology Progress Series* 121, 171-179.
- Castel, J., Lasserre, P., 1982. Régulation biologique du méiobenthos d'un écosystème lagunaire par un élevage expérimental en soles (*Solea vulgaris*). *Oceanologica Acta n°sp*, 243-251.
- Chardy, P., Dauvin, J.-C., 1992. Carbon flows in a subtidal fine sand community from the western English Channel: a simulation ANALYSIS. *Marine Ecology Progress Series* 81, 147-161.
- Chardy, P., Gros, P., Mercier, H., Monbet, Y., 1993. Benthic carbon budget for the Bay of Saint Brieuc (Western Channel). Application of inverse method. *Oceanologica Acta* 16, 687-694.
- Coull, B.C., 1990. Are members of the meiofauna food for higher trophic levels? *Transactions of the American Microscopical Society* 109, 233-246.
- Daborn, G.R., Amos, C.R., Brylinski, M., Christian, H., Drapeau, G., Faas, R.W., Grant, J., Long, B., Paterson, D.M., Perillo, G.M.E., Piccolo, M.C., 1993. An ecological cascade effect: migratory birds affect stability of intertidal sediments. *Limnology and Oceanography* 38, 225-231.
- Dauvin, J.-C., Desroy, N., 2005. The food web in the lower part of the Seine estuary: A synthesis of existing knowledge. *Hydrobiologia*, 540, 13-27.
- Degré, D., Sauriau, P.-G., Haubois, A.-G., 2003. Variabilité temporelle des peuplements de bivalves et de la structure de population de *Scrobicularia plana* sur la vasière de Montportail-Brouage (S-O, France). *Journal de Recherche Océanographique* 1-2, 28-33.
- Dierschke, V., Kube, J., Rippe, H., 1999b. Feeding ecology of dunlins *Calidris alpina* staging in the southern Baltic Sea, 2. Spatial and temporal variations in the harvestable fraction of their favourite prey *Hediste diversicolor*. *Journal of Sea Research* 42, 65-82.
- Dierschke, V., Kube, J., Probst, S., Brenning, U., 1999a. Feeding ecology of dunlins *Calidris alpina* staging in the southern Baltic Sea, 1. Habitat use and food selection. *Journal of Sea Research* 42, 49-64.
- Donali, E., Olli, K., Heiskanen, A.-S., Andersen, T., 1999. Carbon flow patterns in the planktonic food web of the Gulf of Riga, the Baltic Sea: a reconstruction by the inverse method. *Journal of Marine Systems* 23, 251-268.
- Escaravage, V., Garcia, M.E., Castel, J., 1989. The distribution of meiofauna and its contribution to detritic pathways in tidal flats (Arcachon Bay, France). *Topics in marine biology*. Ros J.D. (ed) 53, 551-559.
- Essink, K., Beukema, J.J., Coosen, J., Craeymeersch, J.A., Ducrotoy, J.-P., Michaelis, H., Robineau, B., 1991. Population dynamics of the bivalve mollusc *Scrobicularia plana* da Costa: comparisons in time and space. In: Elliott, M., Ducrotoy, J.-P. (Eds.), *Estuaries and Coasts: spatial and temporal intercomparisons*. ECSA 19 Symposium. Olsen & Olsen, pp. 167-172.
- Gailhard, I., Gros, P., Durbec, J.P., Beliaeff, B., Belin, C., Nézan, E., Lassus, P., 2002. Variability patterns of microphytoplankton communities along the French coasts. *Marine Ecology Progress Series* 242, 39-50.

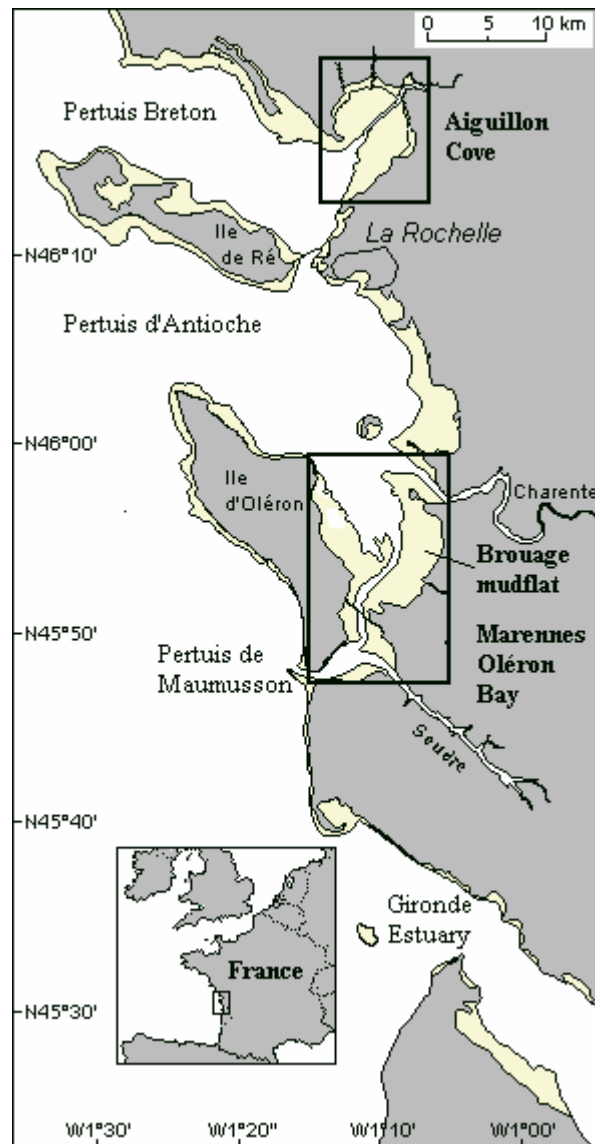
- Gerlach, S.A., 1971. On the importance of meiofauna for benthos communities. *Oecologia* 6, 176-190.
- Gouleau, D., Jouanneau, J.M., Weber, O., Sauriau, P.G., 2000. Short- and long-term sedimentation on Montportail-Brouage intertidal mudflat, Marennes-Oléron Bay, France. *Continental Shelf Research* 20, 1513-1530.
- Gouletquer, P., Héral, M., 1997. Marine molluscan production trends in France: from fisheries to aquaculture. In: MacKensie, C.L., Bunell, V.G., Rosenfield, A. (Eds.), *The history, present condition, and future of the Molluscan fishereis of North America and Europe*. NOAA Technical Report NMFS 129, Department of Commerce, Seattle, Washington, pp. 137-164.
- Gouletquer, P., Le Moine, O., 2002. Shellfish farming and Coastal Zone Management (CZM) development in Marennes-Oléron Bay and Charentais Sounds (Charente-Maritime, France): A review of recent developments. *Aquaculture International* 10, 507-525.
- Guarini, J.M., Blanchard, G.F., Gros, P., 2000. Quantification of the microphytobenthic primary production in European intertidal mudflats - a modelling approach. *Continental Shelf Research* 20, 1771-1788.
- Guarini, J.M., Blanchard, G.F., Bacher, C., Gros, P., Riera, P., Gouleau, D., Galois, R., Prou, J., Sauriau, P.G., 1998. Dynamics of spatial patterns of microphytobenthic biomass: inferences from a geostatistical analysis of two comprehensive surveys in Marennes-Oléron Bay (France). *Marine Ecology Progress Series* 166, 131-141.
- Guarini, J.-M., Gros, P., Blanchard, G., Richard, P., Fillon, A., 2004. Benthic contribution to pelagic microalgal communities in two semi-enclosed, European-type littoral ecosystems (Marennes-Oléron Bay and Aiguillon Bay, France). *Journal of Sea Research* 52, 241-258.
- Guérault, D., Dorel, D., Désaunay, Y., 1996. Cartographie des nourriceries littorales de poissons du Golfe de Gascogne. IFREMER/MAPA/DPMCM, Nantes.
- Haubois, A.-G., Guarini, J.-M., Richard, P., Blanchard, G.F., Sauriau, P.-G., 2002. Spatio-temporal differentiation in the population structure of *Hydrobia ulvae* on an intertidal mudflat. *Journal of the Marine Biological Association of the United Kingdom* 82, 605-614.
- Haubois, A.-G., Guarini, J.-M., Richard, P., Hemon, A., Arotcharen, E., Blanchard, G.F., 2004. Differences in spatial structures between juveniles and adults of the gastropod *Hydrobia ulvae* on an intertidal mudflat (Marennes-Oléron Bay, France) potentially affect estimates of local demographic processes. *Journal of Sea Research* 51, 63-68.
- Haubois, A.-G., Guarini, J.-M., Richard, P., Fichet, D., Radenac, G., Blanchard, G.F., 2005. Ingestion rate of the deposit-feeder *Hydrobia ulvae* (Gastropoda) on epipellic diatoms: effect of cell size and angal biomass. *Journal of Experimental Marine Biology and Ecology* 317, 1-12.
- Jackson, G.A., Eldridge, P.M., 1992. Food web analysis of a planktonic system off southern California. *Progress in Oceanography* 30, 223-252.
- Jørgensen, S.E., Müller, F., 2000. Towards a unifying theory. In: Jørgensen, S.E., Müller, F. (Eds.), *Handbook of ecosystem theories and management*. Lewis Publisher, CRC Press LLC, pp. 465-471.
- Joyeux, E., 2001. Les prés salés de la baie de l'Aiguillon. Intérêt et enjeux. In: Drévès, L., Chaussepiéd, M. (Eds.), *Restauration des écosystèmes côtiers*. Ifremer, Brest, pp. 143-152.
- Laffaille, P., Feunteun, E., Lefebvre, C., Radureau, A., Sagan, G., Lefebvre, J.-C., 2002. Can thin-lipped mullet directly exploit the primary and detritic production of European macrotidal salt marshes? *Estuarine, Coastal and Shelf Science* 54, 729-736.

- Lagardère, J.P., 1987. Feeding ecology and daily food consumption of common sole, *Solea vulgaris*, Quensel, juveniles on the French Atlantic Coast. *Journal of Fish Biology* 30, 91-104.
- Le Hir, P., Roberts, W., Cazaillet, O., Christie, M., Bassoulet, P., Bacher, C., 2000. Characterization of intertidal flat hydrodynamics. *Continental Shelf Research* 20, 1433-1459.
- Le Pape, O., Holley, J., Guérault, D., Désaunay, Y., 2003a. Quality of coastal and estuarine essential fish habitats: estimations based on the size of juvenile common sole (*Solea solea* L.). *Estuarine, Coastal and Shelf Science* 58, 793-803.
- Le Pape, O., Chauvet, F., Mahévas, S., Lazure, P., Guérault, D., Désaunay, Y., 2003b. Quantitative description of habitat suitability for the juvenile common sole (*Solea solea* L.) in the Bay of Biscay (France) and the contribution of different habitats to the adult population. *Journal of Sea Research* 50, 139-149.
- Leguerrier, D., Niquil, N., Petiau, A., Bodoy, A., 2004. Modeling the impact of oyster culture on a mudflat food web in Marennes-Oléron Bay (France). *Marine Ecology Progress Series* 273, 147-162.
- Leguerrier, D., Niquil, N., Boileau, N., Rzeznik, J., Sauriau, P.-G., Le Moine, O., Bacher, C., 2003. Numerical analysis of the food web of an intertidal mudflat ecosystem on the Atlantic coast of France. *Marine Ecology Progress Series* 246, 17-37.
- Marinelli, R.L., Coull, B.C., 1987. Structural complexity and juvenile fish predation on meiobenthos: an experimental approach. *Journal of Experimental Marine Biology and Ecology* 108:67-81.
- Masero, J.A., Pérez-Gonzalez, M., Basadre, M., Otero-Saavedra, M., 1999. Food supply for waders (Aves: *Charadrii*) in an estuarine area in the Bay of Cadiz (SW Iberian Peninsula). *Acta Oecologica* 20, 429-434.
- Mc Lusky, D.S., 1989. The estuarine ecosystem. Blackie and Son Ltd, Glasgow, 215 pp.
- Meire, P.M., Schekkerman, H., Meininger, P.L., 1994. Consumption of benthic invertebrates by waterbirds in the Oosterschelde estuary, SW Netherlands. *Hydrobiologia* 282/283, 525-546.
- Menesguen, A., Hoch, T., 1997. Modelling the biogeochemical cycles of elements limiting primary production in the English Channel. I. role of thermohaline stratification. *Marine Ecology Progress Series* 146, 173-188.
- Monaco, M.E., Ulanowicz, R.E., 1997. Comparative ecosystem trophic structure of three US mid-Atlantic estuaries. *Marine Ecology Progress Series* 161, 239-254.
- Montaudouin (de), X., Sauriau, P.-G., 2000. Contribution to a synopsis of marine species richness in the Pertuis Charentais Sea with new insights in soft-bottom macrofauna of the Marennes-Oléron Bay. *Cahiers de Biologie Marine* 41, 181-222.
- Moore, J.C., Berlow, E.L., Coleman, D.C., De Suiter, P.C., Dong, Q., Hastings, A., Johnson, N.C., McCann, K.S., Melville, K., Morin, P.J., Nadelhoffer, K., Rosemond, A.D., Post, D.M., Sabo, J.L., Scow, K.M., Vanni, M.J., Wall, D.H., 2005. Correspondence address Detritus, trophic dynamics and biodiversity. *Ecology letters* 7, 584-600.
- Morrison, M.A., Francis, M.P., Hartill, B.W., Parkinson, D.M., 2002. Diurnal and Tidal Variation in the Abundance of the Fish Fauna of a Temperate Tidal Mudflat. *Estuarine, Coastal and Shelf Science* 54, 793-807.
- Niquil, N., Jackson, G.A., Legendre, L., Delesalle, B., 1998. Inverse model analysis of the planktonic food web of Takapoto Atoll (French Polynesia). *Marine Ecology Progress Series* 165, 17-29.

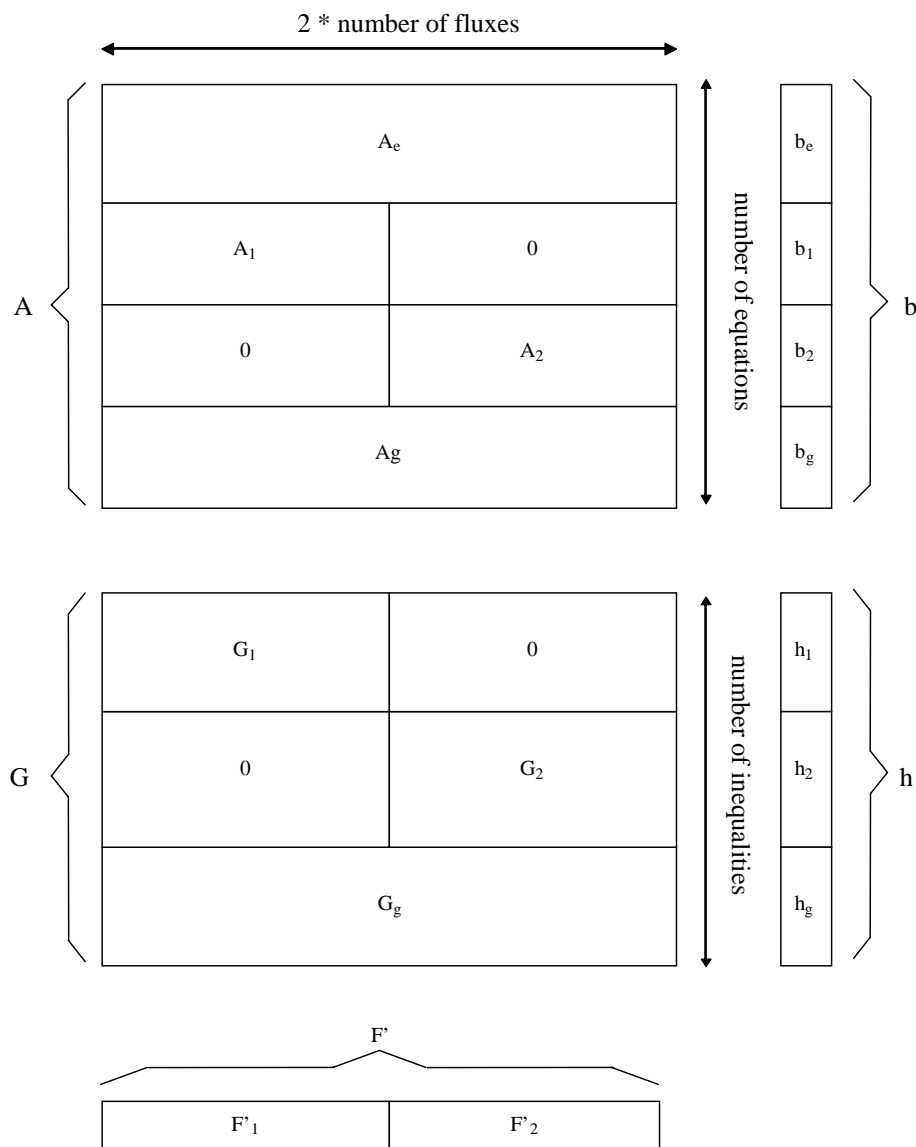
- Odum, E.P., 1980. The status of three ecosystem-level hypotheses regarding salt marsh estuaries: tidal subsidy, outwelling, and detritus-based food chains. In: Kennedy, V.A. (Ed.), *Estuarine perspectives*. Academic Press, London, pp. 485-495.
- Orvain, F., 2005. A model of sediment transport under the influence of surface bioturbation: generalisation to the facultative suspension-feeder *Scrobicularia plana*. *Marine Ecology Progress Series* 286, 43-56.
- Orvain, F., Le Hir, P., Sauriau, P.G., 2003. A model for fluff layer erosion and subsequent bed erosion in the presence of the bioturbator *Hydrobia ulvae*. *Journal of Marine Research* 61, 823-851.
- Orvain, F., Sauriau, P.G., Sygut, A., Joassard, L., Le Hir, P., 2004. Interacting effects of *Hydrobia ulvae* bioturbation and microphytobenthic on the erodability of mudflat sediments. *Marine Ecology Progress Series* 278, 205-223.
- Parker, R.L., 1994. *Geophysical inverse theory*. Princeton University Press, Princeton, New Jersey, 400 pp.
- Roberts, W., Le Hir, P., Whitehouse, R.J.S., 2000. Investigation using simple mathematical models of the effect of tidal currents and waves on the profile shape of intertidal mudflats. *Continental Shelf Research* 20 (10/11), 1079-1097.
- Rybarczyk, H., Ellkaïm, B., 2003. An analysis of the trophic network of a macrotidal estuary: the Seine Estuary (Eastern Channel, Normandy, France). *Estuarine, Coastal and Shelf Science* 58, 775-791.
- Rzeznik-Orignac, J., Fichet, D., Boucher, G., 2003. Spatio-temporal structure of the nematode assemblages of the Brouage mudflat (Marennes-Oléron Bay, France). *Estuarine, Coastal and Shelf Science* 58, 77-88.
- Saltelli, A., Chan, K., Scott, E.M., 2000. *Sensitivity Analysis*. John Wiley & Sons, New York, 504 pp.
- Sauriau, P.G., Mouret, V., Rincé, J.-P., 1989. Organisation trophique de la malacofaune benthique non cultivée du bassin ostréicole de Marennes-Oléron. *Oceanologica Acta* 12, 193-204.
- Sautour, B., Castel, J., 1993. Distribution of zooplankton populations in Marennes-Oléron Bay (France), structure and grazing impact of copepod communities. *Oceanologica Acta* 16, 279-290.
- Schmid-Araya, J.M., Hildrew, A.G., Robertson, A., Schmid, P.E., Winterbottom, J., 2002. The importance of meiofauna in food webs: evidence from an acid stream. *Ecology* 83, 1271-1285.
- SHOM, 2001. *Courants de marée de la côte ouest de France de Saint-Nazaire à Royan*. Service Hydrographique et Océanographique de la Marine (Ed.), Brest, 72 pp.
- Smart, J., Gill, J.A., 2003. Non-intertidal habitat use by shorebirds: a reflection of inadequate intertidal resources? *Biological Conservation* 111, 359-369.
- Soletchnik, P., Faury, N., Razet, D., Gouletquer, P., 1998. Hydrobiology of the Marennes-Oléron Bay. Seasonal indices and analysis of trends from 1978 to 1995. *Hydrobiologia* 386, 131-146.
- Solidoro, C., Crise, A., Crispi, G., Pastres, R., 2003. An a priori approach to assimilation of ecological data in marine ecosystem models. *Journal of Marine Systems* 40-41.
- Struski, C., Bacher, C., *in press*. Preliminary estimate of primary production by phytoplankton in Marennes-Oléron Bay, France. *Estuarine Coastal and Shelf Science*.
- Triplet, P., Le Dréan-Quénechdu, S., Mahéo, R., 2001. Incidence des infrastructures portuaires et des activités humaines sur l'abondance et la répartition des limicoles sur le littoral français. In: Drévès, L., Chaussepied, M. (Eds.), *Restauration des écosystèmes côtiers*. Ifremer, Brest, pp. 243-255.

- Ulanowicz, R.E., 1986. Growth and development: ecosystem phenomenology. Springer-Verlag, New York, 203 pp.
- Verger, F., 1968. Marais et wadden du littoral français. Biscaye frères, Bordeaux, 541 pp.
- Vézina, A.F., 1989. Construction of flow networks using inverse methods. In: Wulff, F., Field, J.G., Mann, K.H. (Eds.), Network analysis in marine ecology. Methods and applications. Springer-Verlag, Berlin.
- Vézina, A.F., Platt, T., 1988. Food web dynamics in the ocean. I. Best estimates using inverse methods. Marine Ecology Progress Series 42, 269-287.
- Vézina, A.F., Savenkoff, C., 1999. Inverse modelling of carbon and nitrogen flows in the pelagic food web of the north-east subarctic Pacific. Deep-Sea Research 46, 2909-2939.
- Wilson, W.H., Parker, K., 1996. The life history of the amphipod, *Corophium volutator*: the effects of temperature and shorebird predation. Journal of Experimental Marine Biology and Ecology 196, 239-250.
- Winemiller, K.O., Polis, G.A., 1996. Food webs: what do they tell us about the world? In: Polis, G.A., Winemiller, K.O. (Eds.), Food webs. Integration of patterns and dynamics. Chapman & Hall, New York, pp. 1-22.
- Wolff, W.J., van Haperen, A.M.M., Sandee, A.J.J., Baptist, H.J.M., Saeijs, H.L.F., 1975. The trophic role of birds in the Grevelingen estuary, The Netherlands, as compared to their role in the saline Lake Grevelingen, 10th European Symposium on Marine Biology, Ostend, Belgium, pp. 673-689.
- Yésou, P., 1992. Importance de la baie de l'Aiguillon et de la pointe d'Arçay (Vendée, France) pour les limicoles. L'oiseau et la Revue Française d'Ornithologie 62, 213-233.
- Zharikov, Y., Skilleter, G.A., 2003. Depletion of benthic invertebrates by bar-tailed godwits *Limosa lapponica* in a sub-tropical estuary. Marine Ecology Progress Series 254, 151-162.

**Figure 1** :Map of the Charentais Sounds (Pertuis) showing the location of the two study sites the Aiguillon Cove and the Brouage Mudflat.

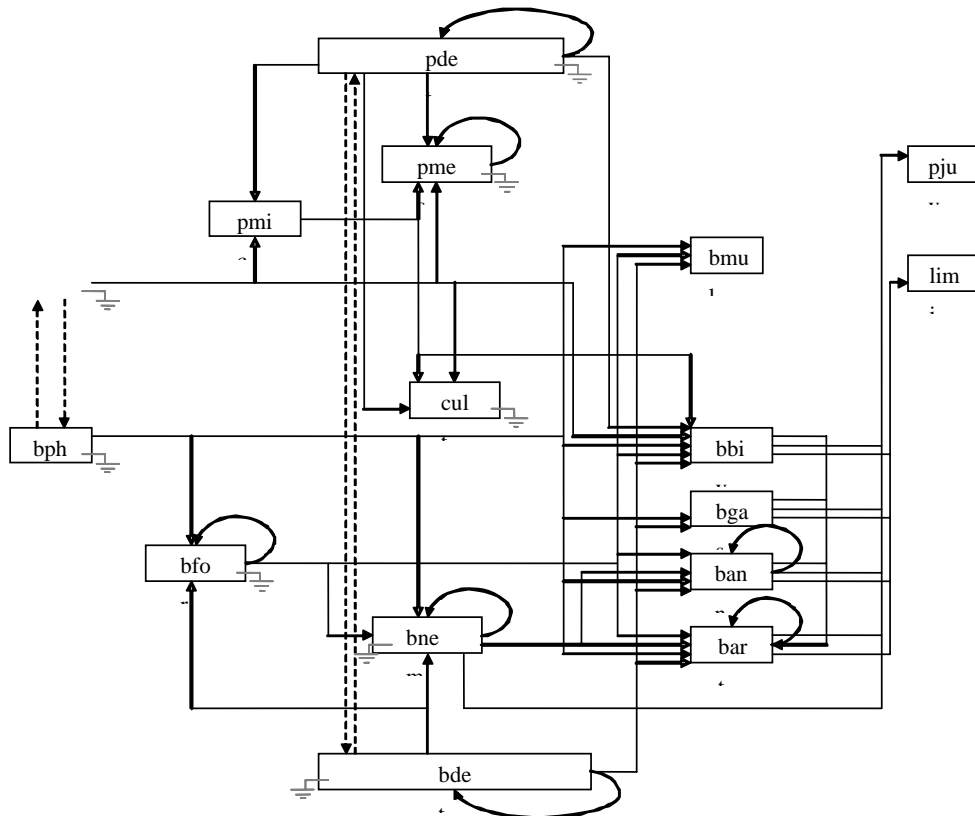


**Figure 2:** Construction of the matrices  $A$  and  $G$  and of the vectors  $b$  and  $h$  for inverse analysis applied on a two-coupled-seasons model.  $A_e$  is the annual equilibrium equation matrix,  $A_1$  and  $A_2$  are the two seasonal equation matrices,  $A_g$  is the annual equation matrix.  $b_e$  (null vector),  $b_1$ ,  $b_2$  and  $b_g$  are the associated right-hand constant vectors.  $G_1$  and  $G_2$  are the two seasonal inequality matrices;  $G_g$  is the annual inequality matrix.  $h_1$ ,  $h_2$ ,  $h_g$  are the associated solution vectors.  $F'$  is the transposed vector of  $F$ , the solution vector, composed of the solution vector  $F_1$  for season 1 and the solution vector  $F_2$  for season 2. These are column vectors and hence appear here in their transposed form:  $F'$ .

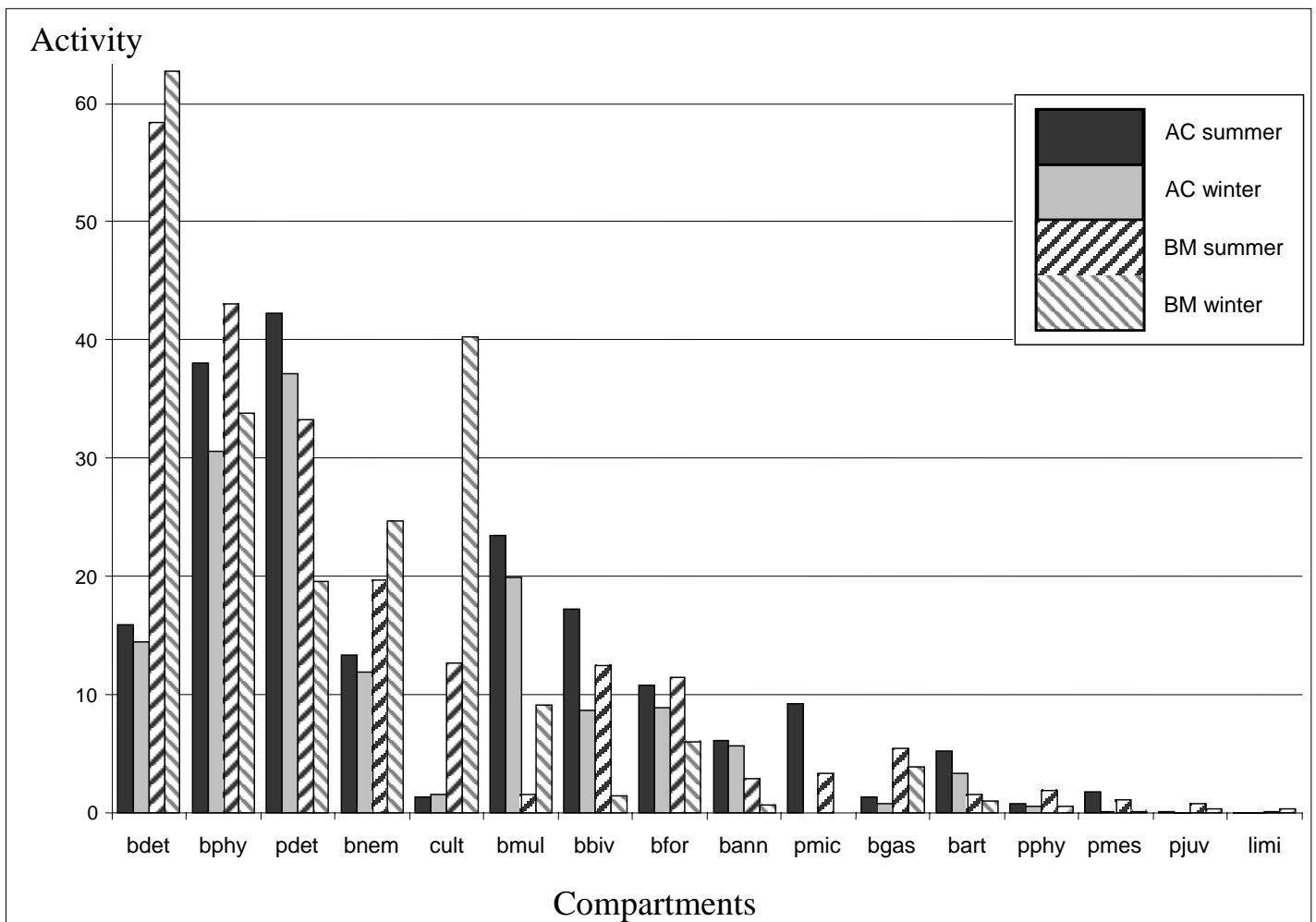




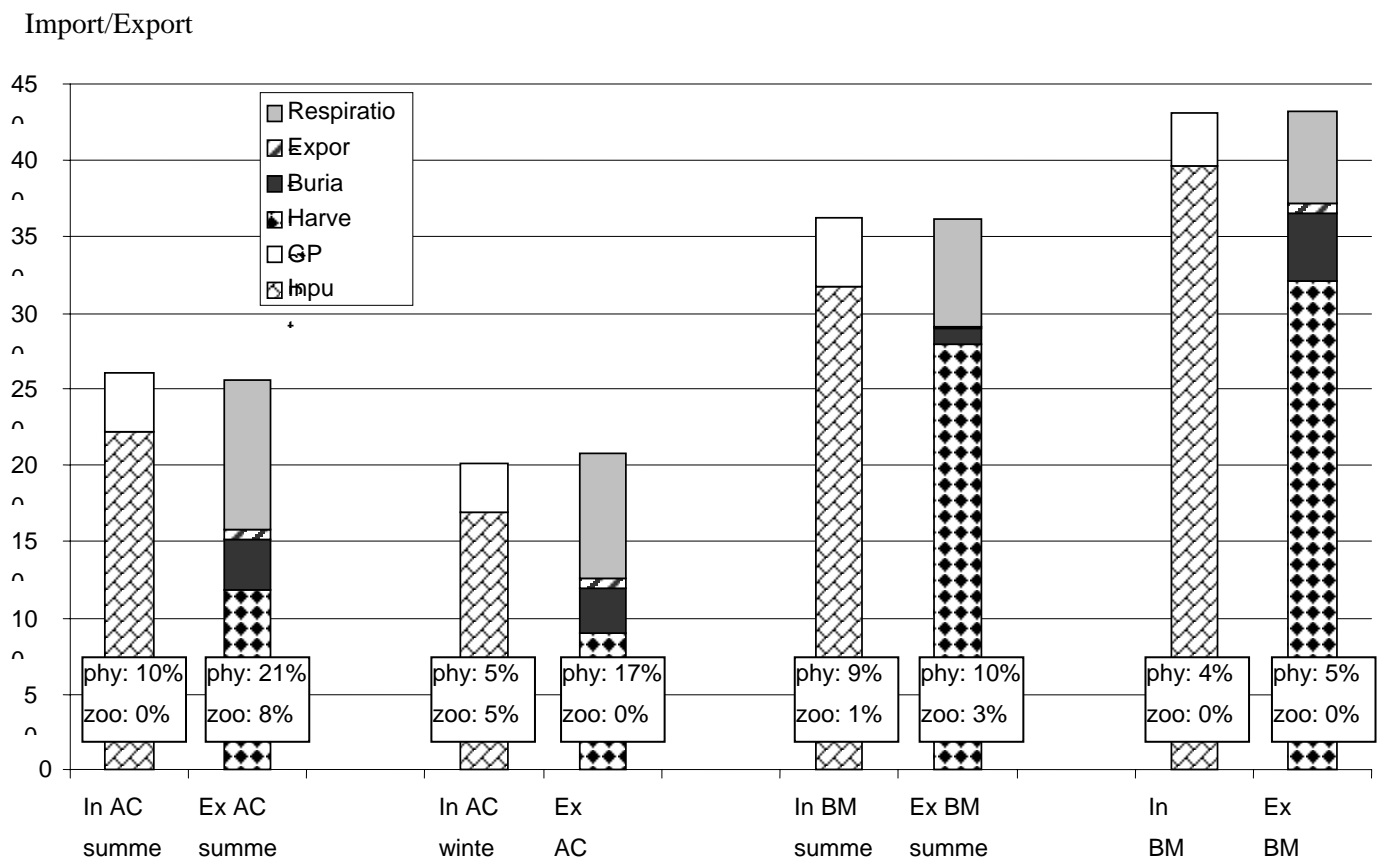
**Figure 3:** Conceptual model used for the representation of the two food webs. The compartments are those described in Table 1. Arrows represent trophic or physical flows. “Electric earth” signs represent losses by respiration. Numbers associated with each flux will be the references used in Tables 4 and 5.



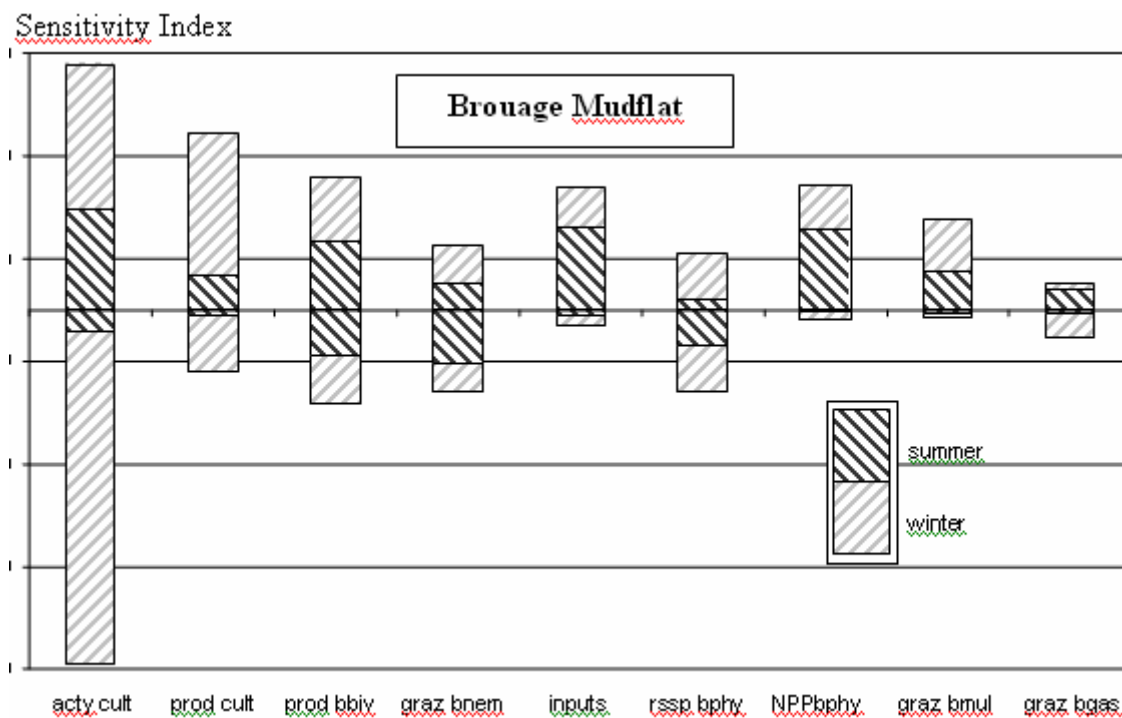
**Figure 4:** Activities (sum of all inflows) of each compartment for the two seasons (summer and winter) and the two ecosystems. AC summer, AC winter, BM summer and BM winter represent the Aiguillon Cove and Brouage Mudflat ecosystems during summer and winter, respectively. The compartments are referred to by their abbreviations given in Table 1, and are ranked by decreasing order of the sum of the 4 models activities. Values are given in  $\text{gC}\cdot\text{m}^{-2}\cdot\text{month}^{-1}$ .



**Figure 5:** Overall imports and exports of the two systems, with their repartitions between gross primary production and inputs *via* the water column for the importations (“In”), and respiration, export by shellfish culture and biotic vectors, burial of detritus and outputs *via* the water column for the exports (“Ex”). Abbreviations AC summer, AC winter, BM summer and BM winter as in Figure 4. The composition of the water column inputs and outputs is given in percentages, ‘phy’ stands for ‘phytoplankton’, ‘zoo’ for ‘microzooplankton and mesozooplankton’, and ‘det’ for ‘pelagic detritus’. Values are given in  $\text{gC}\cdot\text{m}^{-2}\cdot\text{month}^{-1}$ .



**Figure 6:** Effect of most influencing parameters on sensitivity analyses in case of Brouage Mudflat (top) and Aiguillon Cove (bottom) models. Parameters are: the total activity of cultured oysters (acty cult), the commercial production of cultured oysters (prod cult), the production of non-cultivated bivalves (prod bbiv), the grazing of nematodes on microphytobenthos (graz bnem), the total inputs from the Marennes-Oléron Bay (inputs) in BM, the resuspension of microphytobenthos (rssp bphy), the microphytobenthos primary production (NPP bphy), the fish grazing on microphytobenthos (graz bmul) and the grazing of gastropods on microphytobenthos (graz bgas), oceanic and river inputs in AC (inputs O and inputs R), the total net primary production (NPP tot) and that of microphytobenthos (NPP bphy). For each model, these parameters are ordered according to the sum of the 4 indices SI(P), in absolute value. The vertical axis gives the values of the sensitivity analysis index (relative variation of fluxes normalized by the relative variation of parameters, see text for further explanation).



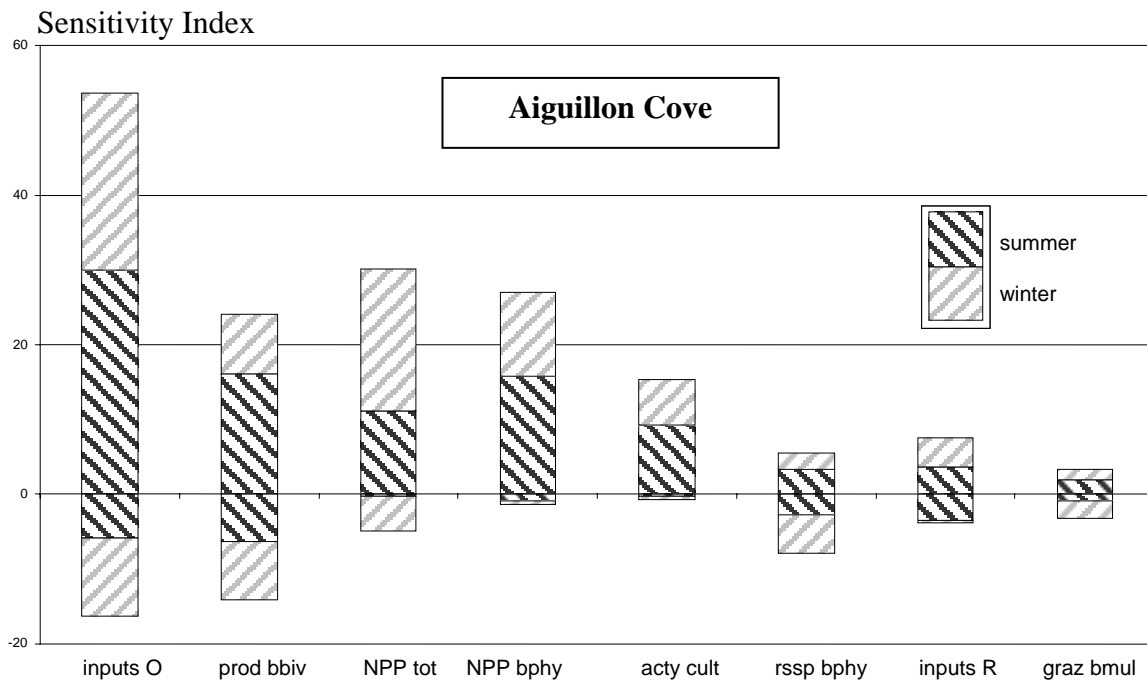




Table 2

Equations and inequalities used for the computation of inverse analysis on the two sites, concerning seasonal data. Two values (min and max) are given for the inequalities, and one only for the equalities (bold values). All data are given in  $\text{gC}\cdot\text{m}^{-2}\cdot\text{month}^{-1}$ . All parameters are given, but references are mentioned only if they add to Leguerrier et al. (2003, 2004). (1) with model rate from Barillé et al., 1997, (2) from model calculation (Struski and Bacher, *in press*).

Compartment	Parameter	Aiguillon Cove				Brouage Mudflat			
		Summer		Winter		Summer		Winter	
		min	max	min	max	min	max	min	max
cult	winter biomass - summer biomass <sup>(1)</sup>			-0.086	0.412	-0.051	12.31	-1.77	2.84
bfor	winter biomass - summer biomass			-0.14	0.14	<b>0.591</b>			
bnem	winter biomass - summer biomass			-0.28	0.28	<b>-0.094</b>			
bgas	winter biomass - summer biomass			-0.662	0.216	<b>0.061</b>			
bjuv	winter biomass - summer biomass			-0.002	0.002	<b>0</b>			
bmul	winter biomass - summer biomass	<b>0</b>				<b>0</b>			
blim	winter biomass - summer biomass	<b>0</b>				<b>0</b>			
pphy	oceanic inputs	<b>20.1</b>		<b>7.41</b>		<b>28.68</b>		<b>15.67</b>	
pphy	river inputs	<b>2.85</b>		<b>1.03</b>					
pmic	oceanic inputs					<b>1.21</b>			
pmes	oceanic inputs					<b>4.52</b>			
pdet (bacteria)	oceanic inputs					<b>17.19</b>		<b>11.43</b>	
pdet (non-living)	oceanic inputs	<b>194.1</b>		<b>144.8</b>		<b>107.2</b>		<b>187.5</b>	
pdet	river inputs	<b>5.23</b>		<b>7.09</b>					
pdet (dissolved)	oceanic inputs					<b>158.9</b>		<b>182.2</b>	
pdet (bacteria)	export to ocean					<b>54.53</b>			
bphy	net primary production	<b>32.1</b>		<b>26.01</b>		<b>32.1</b>		<b>25.67</b>	
pphy	net primary production <sup>(2)</sup>					<b>1.79</b>		<b>0.48</b>	
pmes	grazing	<b>0.564</b>		<b>0.158</b>		<b>0.869</b>		<b>0.174</b>	
bnem	grazing					<b>13.7</b>		<b>13.53</b>	
bbiv	mortality + egestion	<b>15.4</b>		<b>8.24</b>		<b>1.97</b>		<b>1.75</b>	
bgas	broutage	<b>1.3</b>		<b>0.76</b>		<b>1.09</b>		<b>0.856</b>	
cult	exportation for commercial production	<b>0.02</b>		<b>0.048</b>		<b>0</b>		<b>4.03</b>	
cult	respiration	<b>0.15</b>		<b>0.092</b>		<b>2.6</b>		<b>1.17</b>	
bmul	ingestion					<b>1.58</b>		<b>1.58</b>	
blim	ingestion	<b>0.016</b>		<b>0.038</b>		<b>0.099</b>		<b>0.292</b>	
pdet (bacteria)	production					2.46	3.33	0.844	1.96
bdet (bacteria)	production					30.47	51.7	17.16	29.12
bdet (bacteria)	respiration					14.13	23.97	16.18	27.46
pdet	sedimentation by pseudo faeces <sup>(1)</sup>					<b>29.27</b>		<b>19.29</b>	
pphy	sedimentation by pseudo faeces <sup>(1)</sup>					<b>2.36</b>		<b>6.08</b>	
pdet (bacteria)	sedimentation by pseudo faeces <sup>(1)</sup>					<b>1.69</b>		<b>3.676</b>	
pphy	respiration (ratio of primary production)	0.007	0.043	0.01	0.06	0.007	0.043	0.01	0.06
pphy	respiration (ratio of primary production)	0.007	0.043	0.01	0.06	0.007	0.043	0.01	0.06
pphy	exudation (ratio of primary production)					0.003	0.079	0.004	0.11
pphy	exudation (ratio of primary production)					0.003	0.079	0.004	0.11

Table 3

Inequalities used for the computation of inverse analysis on the two sites, concerning annual data. All data are given in  $\text{gC.m}^{-2}.\text{month}^{-1}$ . All parameters are given, but references are mentioned only if they add to Leguerrier et al. (2003, 2004): (1) Altenbach, 1992, (2) Lagardère, 1987.

compartment	parameter	Aiguillon Cove		Brouage Mudflat	
		minimum	maximum	minimum	maximum
pmic	production	0.062	0.864	0.04	0.56
pmic	respiration	0.102	0.646	0.066	0.418
pmic	consommation	0.246	5.39	0.159	3.49
bfor	production <sup>(1)</sup>	0	1.225	0.186	5.13
pmes	respiration	0.033	0.149	0.02	0.092
pmes	production	0.017	0.443	0.01	0.271
bnem	production	0.066	4.43	0.204	3.6
bnem	respiration	0.303	15.51	0.728	2.62
bbiv	respiration	0.005	20.30	0.058	1.79
bgas	production	0	1.2	0.027	0.587
bgas	respiration	0	1.65	0.023	0.889
bann	production	0.0004	0.938	0.032	0.352
bann	respiration	0.0005	1.29	0.013	0.486
bart	production	0	0.443	0.034	0.304
bart	respiration	0	0.427	0.128	0.233
bjuv	ingestion <sup>(2)</sup>	0.0002	0.038	0	1.084
pphy	net primary production	1.14	2.86	seasonal values (table 2)	



Table 4

Result of inverse analysis computation for Aiguillon Cove and Brouage Mudflat physical fluxes (inputs, outputs, deposition and resuspension). FROM = compartment of origin; TO = destination compartment; N° = flow number as in Figure 3. See Table 1 for abbreviations; GPP = Gross Primary Production; resp = respiration. Fluxes in  $\text{gC}\cdot\text{m}^{-2}\cdot\text{month}^{-1}$ . Flow values completely determined by equations are in bold.

Fluxes		N°	Aiguillon Cove		Brouage Mudflat	
FROM	TO		Summer	Winter	Summer	Winter
river	pphy	1	<b>2.85</b>	<b>1.03</b>	0	0
river	pmic	2	0	4.65	0	0
river	pmes	3	0	0	0	0
river	pdet	4	<b>5.23</b>	<b>7.09</b>	0	0
ocean	pphy	5	<b>20.10</b>	<b>7.41</b>	<b>28.68</b>	<b>15.67</b>
ocean	pmic	6	0	4.65	<b>1.21</b>	0.27
ocean	pmes	7	0	0	<b>4.52</b>	0
ocean	pdet	8	<b>194.08</b>	<b>144.76</b>	<b>283.24</b>	<b>381.14</b>
pphy	export	9	24.87	15.36	28.31	16.98
pmic	export	10	8.13	0	1.97	0
pmes	export	11	0.71	0.07	4.93	0.08
pdet	export	12	85.08	74.63	243.58	303.85
bdet	burial	13	31.96	29.01	11.83	44.01
bphy	pphy	14	1.74	6.52	1.09	7.04
bdet	pdet	15	0	0	42.55	4.99
pphy	bphy	16	0	0	<b>2.36</b>	<b>6.08</b>
pdet	bdet	17	53.11	45.62	31.17	23.24
cult	export	18	<b>0.02</b>	<b>0.05</b>	<b>0</b>	<b>4.03</b>
pjuv	export	19	0.01	0.01	0.23	0.11
bmul	export	20	7.03	5.98	0.47	2.75
limi	export	21	0.01	0.01	0.03	0.09
GPP	pphy	22	0.80	0.56	1.93	0.52
GPP	bphy	23	38.06	30.55	42.99	33.77
pphy	resp	91	0.04	0.03	0.10	0.03
bphy	resp	92	10.44	8.77	11.30	9.57
pmic	resp	93	1.11	0	0.72	0
bfor	resp	94	8.19	7.14	5.65	4.34
pmes	resp	95	0.25	0.02	0.14	0.02
bnem	resp	96	6.17	5.95	0.13	6.11
bbiv	resp	97	1.84	0.43	3.02	0.08
bgas	resp	98	0.91	0.53	0.44	1.52
bann	resp	99	3.98	3.72	0.53	0.42
bart	resp	100	3.13	2.05	0.15	0.35
cult	resp	101	<b>0.15</b>	<b>0.09</b>	<b>2.60</b>	<b>1.17</b>
pjuv	resp	102	0.02	0.01	0.38	0.18
bmul	resp	103	9.43	7.81	0.79	3.37
limi	resp	104	0.01	0.02	0.05	0.15
pdet	resp	105	38.07	33.40	29.93	17.63
bdet	resp	106	14.30	12.98	14.13	16.18

Table 5

Numerical results of inverse analysis for the Aiguillon Cove and the Brouage Mudflat food web models. Flow noted as Flow FROM a TO b = biological exchanges between compartments a and b (flow in  $\text{gC.m}^{-2}.\text{month}^{-1}$ ). Flows expressed in percentage of the total consumption by each consumer appeared in the diet of the consumer column (ratio in %). See Table 1 for abbreviations and figure 2 for flow numbers ( $N^\circ$ ). No flow value is in bold as no flow was directly determined by equations. The following null flows have been omitted for clarity: pphy To pphy (24), pmic To pphy (25), pmic To pmes (31), pmes To pmes (32), pphy To bbiv (38), pmic To bbiv (39), bfor To bbiv (42), bphy To bart (51), bnem To bart (53), bann To bart (56), pphy To cult (59), pmic To cult (60), bnem To pjuv (62), bann To pjuv (65) and bfor To bmul (68).

Flow			Flow value ( $\text{gC.m}^{-2}.\text{month}^{-1}$ )				Diet of the consumer (%)			
			Aiguillon Cove		Brouage Mudflat		Aiguillon Cove		Brouage Mudflat	
			FROM	TO	Summer	Winter	Summer	Winter	Summer	Winter
pdet	pmic	26	9.24	0	3.35	0	100	0	100	0
bphy	bfor	27	7.51	6.25	5.6	2.87	70	70	49	47
bdet	bfor	29	3.22	2.68	5.44	1.25	30	30	47	21
pphy	pmes	30	0.56	0.16	0.87	0.17	31	100	78	100
pdet	pmes	33	1.22	0	0.25	0	69	0	22	0
bphy	bnem	34	0	0	13.7	13.53	0	0	70	55
bfor	bnem	35	0	0	0.13	0	0	0	1	0
bnem	bnem	36	0	0	0.94	1.34	0	0	5	5
bdet	bnem	37	13.34	11.89	4.94	9.82	100	100	25	40
pdet	bbiv	40	12.07	6.07	7.94	0.92	70	70	64	63
bphy	bbiv	41	1.5	0	0	0	9	0	0	0
bdet	bbiv	43	3.67	2.6	4.56	0.53	21	30	36	37
bphy	bgas	44	1.3	0.76	1.09	0.86	100	100	20	22
bdet	bgas	45	0	0	4.4	3.06	0	0	80	78
bphy	bann	46	1.77	1.64	0	0	29	29	0	0
bfor	bann	47	0.84	0.69	0	0	14	12	0	0
bnem	bann	48	1.64	1.47	1.39	0.48	27	26	48	69
bann	bann	49	0.56	0.66	0.6	0	9	12	21	0
bdet	bann	50	1.27	1.18	0.89	0.22	21	21	31	31
bfor	bart	52	0.52	0.34	0	0	10	10	0	0
bbiv	bart	54	1.54	1	0.49	0.53	30	30	32	52
bgas	bart	55	0.18	0	0.3	0.34	3	0	19	33
bart	bart	57	0.44	0.44	0.31	0.01	8	13	20	1
bdet	bart	58	2.5	1.6	0.45	0.14	48	47	29	14
pdet	cult	61	1.32	1.57	12.66	40.3	100	100	100	100
bbiv	pjuv	63	0.05	0.02	0.38	0.27	100	100	49	77
bgas	pjuv	64	0	0	0.19	0.08	0	0	25	23
bart	pjuv	66	0	0	0.2	0	0	0	26	0
bphy	bmul	67	11.99	9.14	1.58	1.58	51	46	100	17
bnem	bmul	69	0	0	0	3.56	0	0	0	39
bdet	bmul	70	11.45	10.81	0	4.02	49	54	0	44
bbiv	limi	71	0.0085	0.0237	0.1	0.24	55	59	100	83
bgas	limi	72	0.0031	0.0074	0	0.05	20	18	0	17
bann	limi	73	0.0031	0.0074	0	0	20	18	0	0
bart	limi	74	0.0008	0.0018	0	0	5	4	0	0
pdet	pdet	75	42.3	37.11	33.25	19.59				
pphy	pdet	77	0	0	0.04	0.01				
bdet	bdet	76	15.89	14.43	58.42	62.74				
bphy	bdet	78	0	0	10.78	4.7				
pmic	pdet	79	0	9.31	1.88	0.28				
bfor	bdet	80	1.07	0.89	4.68	0.61				
pmes	pdet	81	0.83	0.08	0.56	0.09				
bnem	bdet	82	5.34	4.76	17.34	13.07				
bbiv	bdet	83	13.68	7.37	8.07	0.94				
bgas	bdet	84	0.26	0.15	4.5	2				
bann	bdet	85	1.47	1.37	1.8	0.2				
bart	bdet	86	1.54	1	0.96	0.57				
cult	bdet	87	0.35	2.55	8.78	36.87				
pjuv	pdet	88	0.01	0.0045	0.15	0.07				
bmul	bdet	89	6.98	6.15	0.32	3.04				
limi	bdet	90	0.003	0.01	0.02	0.06				

Table 6

Sum of fluxes from inverse analysis computations for Aiguillon Cove and Brouage Mudflat models. Internal fluxes are fluxes between two compartments of the system; benthic and pelagic fluxes refer to the sink compartments. Fluxes in  $\text{gC.m}^{-2}.\text{month}^{-1}$  and ratio in %.

Properties	Aiguillon Cove		Brouage Mudflat	
	Summer	Winter	Summer	Winter
Sum of all fluxes	751	607	1026	1139
Sum of internal benthic fluxes	81	66	161	156
Sum of internal pelagic fluxes	54	47	40	23
Ratio of sum of detritivory fluxes to sum of herbivory fluxes	4.77	5.01	5.98	7.50