



HAL
open science

A LC/APCI-MS/MS method for analysis of imidacloprid in soils, in plants and in pollens

J.M. Bonmatin, I. Moineau, R. Charvet, C. Fléché, M.E. Colin, E.R. Bengsch

► To cite this version:

J.M. Bonmatin, I. Moineau, R. Charvet, C. Fléché, M.E. Colin, et al.. A LC/APCI-MS/MS method for analysis of imidacloprid in soils, in plants and in pollens. *Analytical Chemistry*, 2003, 75 (9), pp.2027-2033. 10.1021/ac020600b . hal-00087695

HAL Id: hal-00087695

<https://hal.science/hal-00087695v1>

Submitted on 29 Sep 2021

HAL is a multi-disciplinary open access archive for the deposit and dissemination of scientific research documents, whether they are published or not. The documents may come from teaching and research institutions in France or abroad, or from public or private research centers.

L'archive ouverte pluridisciplinaire **HAL**, est destinée au dépôt et à la diffusion de documents scientifiques de niveau recherche, publiés ou non, émanant des établissements d'enseignement et de recherche français ou étrangers, des laboratoires publics ou privés.



Distributed under a Creative Commons Attribution 4.0 International License

A LC/APCI-MS/MS Method for Analysis of Imidacloprid in Soils, in Plants, and in Pollens

J. M. Bonmatin,^{*}† I. Moineau,[†] R. Charvet,[†] C. Fleche,[‡] M. E. Colin,[§] and E. R. Bengsch[†]

Centre de Biophysique Moléculaire, CNRS and Université Orléans, 45071 Orléans Cedex 02, France, Laboratoire de Pathologie des Petits Ruminants et des Abeilles, AFSSA, 06902 Sophia Antipolis Cedex, France, and INRA-UAPV Ecologie des invertébrés, 84914 Avignon Cedex 09, France

Imidacloprid, the most used systemic insecticide, is suspected of having harmful effects on honeybees at nanogram per bee or at microgram per kilogram levels. However, there is a lack of methodology to detect imidacloprid and its metabolites at such low levels. We developed a method for the determination of low amounts of imidacloprid in soils, plants (leaves and flowers), and pollens by using HPLC coupled to tandem mass spectrometry (APCI-MS/MS). Extraction, separation, and detection were performed according to quality assurance criteria, to Good Laboratory Practice, and to criteria from the directive 96/23/EC, which is designed for banned substances. The linear range of application is 0.5–20 µg/kg imidacloprid in soils, in plants, and in pollens, with a relative standard deviation of 2.9% at 1 µg/kg. The limits of detection and of quantification are LOD = 0.1 µg/kg and LOQ = 1 µg/kg, respectively. For the first time, this study permitted us to follow the fate of imidacloprid in the environment. When treated, flowers of sunflower and maize contain average values of ~10 µg/kg imidacloprid. This explains that pollens from these crops are contaminated at levels of a few micrograms per kilogram, suggesting probable deleterious effects on honeybees.

Imidacloprid, 1-(6-chloronicotinyloxy)-2-(nitroimino)imidazolidine, is a relatively new insecticide with high activity against sucking insects.¹ It is the most used systemic insecticide in the world (~70 crops in more than 100 countries). It is systemic when used as seed dressing or soil treatment because it is distributed in plants by the sap. Imidacloprid works by interfering with the transmission of stimuli in the insect's nervous system. It causes a blockage in at least one type of nicotinic neuronal pathway that is more abundant in insects than in warm-blooded animals. This makes imidacloprid much more toxic to insects than to other species. Furthermore, imidacloprid has a highly specific affinity to insect nicotinic acetylcholine receptors (nAChR).^{2–5} Its binding leads to

the accumulation of acetylcholine, resulting in the paralysis and death of insects.^{2,3,6}

The seed dressing for sunflower with imidacloprid was launched on the French market in 1994. Since 1995, beekeepers have observed the death of numerous bees and a drastic decrease in honey production. This problem has worsened with the increasing use of imidacloprid (formulation Gaucho) on sunflower and on others crops, such as maize and wheat. From this, imidacloprid has been suspected as having harmful effects on honeybees and large-scale studies were launched in France in 1998. Especially, the possible intoxication of bees could be due to the presence of imidacloprid in the pollen of treated crops. First, contaminated pollen would induce sublethal or chronic toxicity at the time of flowering. Second, contaminated pollen could be responsible for delayed intoxication since it is stocked as nutrient reserves in beehives.

Imidacloprid exhibits a high oral toxicity to bees. Depending on acute toxicity tests, the oral 50% lethal dose (LD50) was reported to be between 49 and 102 ng/bee,⁷ 40 and 60 ng/bee,⁸ at 5 ng/bee,⁹ and between 3.7 and 40.9 ng/bee.¹⁰ The latter value corresponds to a lethal food contamination level of 100 µg/kg.¹⁰ By contact, the LD50 was found at 24 ng/bee after 24 and 48 h.⁸ Note that the body weight of a bee is ~100 mg. However, new studies have shown that the crucial functions of bees, such as foraging, are affected by sublethal contamination of food in the microgram per kilogram range.¹¹ Moreover, the chronic toxicity appears at an order of magnitude lower (50% mortality at 0.1 µg/kg after 8 days of exposure), not only for imidacloprid itself but also for most of its metabolites.^{12–14}

For a comprehensive approach to the fate of imidacloprid in the environment, a quantitative method is needed in the analysis

* Corresponding author. E-mail: bonmatin@cnrs-orleans.fr.

† CNRS and Université Orléans.

‡ AFSSA.

§ INRA-UAPV Ecologie des invertébrés.

(1) Moriya, K.; Shibuya, K.; Hattori, J.; Tsuboi, S.; Shiokawa, K.; Kagabu, S. *Biosci. Biotechnol. Biochem.* **1992**, *56*, 364–365.

(2) Bai, D.; Lummis, S. C. R.; Leicht, W.; Breer, H.; Sattelle, D. B. *Pestic. Sci.* **1991**, *33*, 197–204.

(3) Liu, M.-Y. B.; Casida, E. *Pestic. Biochem. Physiol.* **1993**, *46*, 40–46.

(4) Leicht, W. *Pestic. Outlook* **1993**, *4*, 17–21.

(5) Yamamoto, I.; Yabuta, G.; Tomizawa, M.; Saito, T.; Miyamoto, T.; Kagabu, S. *J. Pestic. Sci.* **1995**, *20*, 33–40.

(6) Buckingham, S.; Lapied, B.; Corronc, H.; Grolleau F.; Sattelle, D. B. *J. Exp. Biol.* **1997**, *200*, 2685–2692.

(7) Nauen, R.; Ebbinghaus-Kintscher, U.; Schmuck, R. *Pestic. Manage. Sci.* **2001**, *57*, 577–586.

(8) Suchail, S.; Guez D.; Belzunces, L. P. *Environ. Toxicol. Chem.* **2001**, *20*, 2482–2486.

(9) Suchail, S.; Guez, D.; Belzunces, L. P. *Environ. Toxicol. Chem.* **2000**, *19*, 1901–1905.

(10) Schmuck, R.; Schöning, R.; Stork, A.; Schramel, O. *Pestic. Manage. Sci.* **2001**, *57*, 225–238.

(11) Colin, M. E.; Bonmatin, J.-M. Effets de très faibles concentrations d'imidaclopride et dérivés sur le butinage des abeilles en conditions semi-contrôlées. Rapport 1 au Ministère de l'agriculture et de la pêche, 2000.

of soils, plants, flowers, and pollens from field samples. Because the sublethal effects occur in the microgram per kilogram range, the method must detect imidacloprid at less than 1 $\mu\text{g}/\text{kg}$. However, the analytical method available could not detect imidacloprid under 20–50 $\mu\text{g}/\text{kg}$ in plants.¹⁵ Furthermore, pollens had never been analyzed.

Several methods have been reported for the analysis of imidacloprid. Although imidacloprid residues can be analyzed by derivatization and gas chromatography,^{16,17} high-performance liquid chromatography (HPLC) has been already used and appears to be a suitable alternative because of the thermolability and polarity of imidacloprid. Hence, the LC method gave good results for imidacloprid in groundwater,¹⁸ soils,^{19,20} and fruits and vegetables,^{21–23} but the limit of detection (LOD) was still too high for the present purpose. Furthermore, the required method must satisfy strict quality criteria to be classified as a confirmatory method. We developed a new extraction scheme with high recovery rates, coupled to a LC/MS/MS methodology in order to detect and quantify imidacloprid in soils, plants, flowers, and pollens, with fully valid procedures. Applications revealed the fate of imidacloprid in soils over 1 and 2 years. The distribution of imidacloprid in sunflowers has been depicted depending on the stage of growth and as a function of the plant variety. During the full flowering period, flowers contain on the order of 10 $\mu\text{g}/\text{kg}$ imidacloprid in the cases of sunflower and maize. Contamination of these pollens was found at the level of a few micrograms per kilogram. More generally, such a method can be easily adapted for the analysis of fruits and vegetables.

EXPERIMENTAL SECTION

Chemicals, Reagents, and Starting Materials. HPLC grade solvents were used. Imidacloprid standard (purity 99.4%, $\text{C}_9\text{H}_{10}\text{ClN}_5\text{O}_2$ molecular mass 255.7 g/mol (Figure 1a)) was supplied from Bayer AG (Leverkusen, Germany). Antipyrine (purity >99%) was used as an external standard and was purchased from Sigma Chemical Co. (St. Quentin Fallavier, France). Standard solutions were prepared in acetonitrile for imidacloprid, and in methanol for antipyrine. These standards (imidacloprid: 0.1 and 1 ng/ μL) were stored at 4 °C in the dark, where they are stable for several

weeks. Calibration solutions were prepared from these standard solutions in a 50/50 (v/v) mixture of acetonitrile/ H_2O .

To prepare a pH 7 buffer, 42.4 g of sodium carbonate was dissolved in 900 mL of water and 30.5 mL of concentrated acetic acid was added while shaking. The solution was adjusted to 1000 mL with water. Solid-phase extraction was performed using an Isolut 50 mg of MFC₁₈-3 mL (IST).

Pollen from mountain flowers (ciste) and from organically farmed areas were purchased from Percie du Sert (Saint-Hilaire de Lusignan, France). Other pollens of organically farmed crops were sampled directly from several areas in France. Plants and soils were sampled from numerous sites all over France. Plants were sampled at different stages of growth, these stages being defined according to a specific classification.²⁴ Treated samples were compared to (i) organically farmed samples and to (ii) samples without imidacloprid treatment for 3 years or more. All samples were conserved at –24 °C in the dark and homogenized before analysis. Because organically farmed samples did not reveal any signal, they were used as control samples. Such samples demonstrated unambiguously that the sampling procedure was performed without any external contamination.

Sample Treatment. (1) Soils. Air-dried soils (20 g) were extracted by mixing with 100 mL of methanol/ NH_4OH 0.05% (3/1) for 1 min. Two grams of Celite was added. The mixture was vacuum filtered with methanol on a glass frit containing 2 g of wet Celite. The extract was dried by evaporating with a rotary evaporator at 50 °C. The flask was rinsed out with 15 mL of dichloromethane. The extract was evaporated on a hot sand-bath. The residue was dissolved by using ultrasonication in 1 mL of ACN/ H_2O (50/50) in sealed tubes. The extract was centrifuged at 10 000 rpm in 1.5-mL Eppendorf tubes for 2 min. A total of 25 μL was injected in HPLC.

(2) Plants and Flowers. Plants (10 g) were extracted by grinding with 100 mL of methanol/ H_2SO_4 0.04% (4/1) for 1 min. Two grams of Celite was added, and the mixture was vacuum filtered on the glass frit containing 2 g of wet Celite. The extract was concentrated to 5–10 mL of water by evaporating with a rotary evaporator, at 60 °C maximum. The residue was made up to 15 mL with water and centrifuged (4000 rpm) for 5 min. A C₁₈ cartridge was preconditioned with 5 mL of methanol and 5 mL of water. The aqueous surnatant was transferred to the C₁₈ cartridge. Then, the cartridge was rinsed with 5 mL of water and dried under vacuum. The extract was eluted with 5 mL of dichloromethane, and the eluate was collected. The residual aqueous phase, still present in the eluate, was taken out. The eluate was partially evaporated on a warm sand bath. The organic remainder was diluted with 1 mL of ACN/ H_2O (50/50) containing 200 ng/mL antipyrine. The residue was centrifuged (4000 rpm) for 5 min. A total of 20 μL was injected in HPLC.

(3) Pollens. Pollens (10 g) were put in 20 mL of EtOH/ H_2O (75/25) and mixed in an Ultra-Turax blender T25 (Janke & Kunkel) for 1 min. The stem was rinsed 3 times with 5 mL of EtOH/ H_2O (75/25). The extract was centrifuged (3600 rpm) for 5 min. This extraction was made twice. The extracted phases were recovered in a flask. The mixture was evaporated with a rotary evaporator to a final volume of 5 mL of water. Ten milliliters of the pH 7 buffer (Na_2CO_3 / CH_3COOH) was added, and the mixture

- (12) Belzunces, L. P.; Tasei, J.-N. Impacts sur les dépeuplements de colonies d'abeilles et sur les miellées. Rapport au Ministère de l'agriculture sur les effets des traitements de semences de tournesol au Gauchon (imidacloprid), 1997.
- (13) Suchail, S.; Guez, D.; Belzunces, L. P. Toxicity of imidacloprid in *Apis mellifera*. In *Hazards of Pesticides to Bees*; INRA: Paris, 2000; pp 135–140.
- (14) Guez, D.; Suchail, S.; Gauthier, M.; Maleszka, R.; Belzunces, L. P. *Neurobiol. Learn. Mem.* **2001**, *76*, 183–191.
- (15) Placke, F. J.; Weber, E., *Pflanzenschutz-Nachr. Bayer* **1993**, *46* 109–182.
- (16) MacDonald, L.; Meyer, T. *J. Agric. Food Chem.* **1998**, *46*, 3133–3138.
- (17) Uroz, F. J.; Arrebola, F. J.; Egea-Gonzales, F. J.; Martinez-Vidal, J. L. *Analyst* **2001**, *126*, 1355–1358.
- (18) Martinez-Galera, M.; Garrido-Frenich, A.; Martinez-Vidal, J. L.; Parrilla-Vasquez, P. *J. Chromatogr., A* **1998**, *799*, 149–154.
- (19) Baskaran, K.; Kookana, R. S.; Naidu, R. *J. Chromatogr., A* **1997**, *787*, 271–275.
- (20) Ruiz de Erenchun, N.; Gomez de Balugera, Z.; Aranzazu Goicolea, M.; Barrio, R. *Anal. Chim. Acta* **1997**, *349*, 199–206.
- (21) Ishii, Y.; Kobori, I.; Araki, Y.; Kuroguchi, S.; Iwaya, K.; Kagabu, S. *J. Agric. Food Chem.* **1994**, *42*, 2917–2921.
- (22) Fernandez-Alba, R. A.; Valverde, A.; Agüera, A.; Contreras, M.; Chiron, S. *J. Chromatogr., A* **1996**, *721*, 97–105.
- (23) Pous, X.; Ruiz, M.; Pico, Y.; Font, G. *Fresenius J. Anal. Chem.* **2001**, *371–7*, 182–189.

- (24) Lancashire, P. D.; Bleiholder, H. *Ann. Appl. Biol.* **1991**, *119*, 561–601.

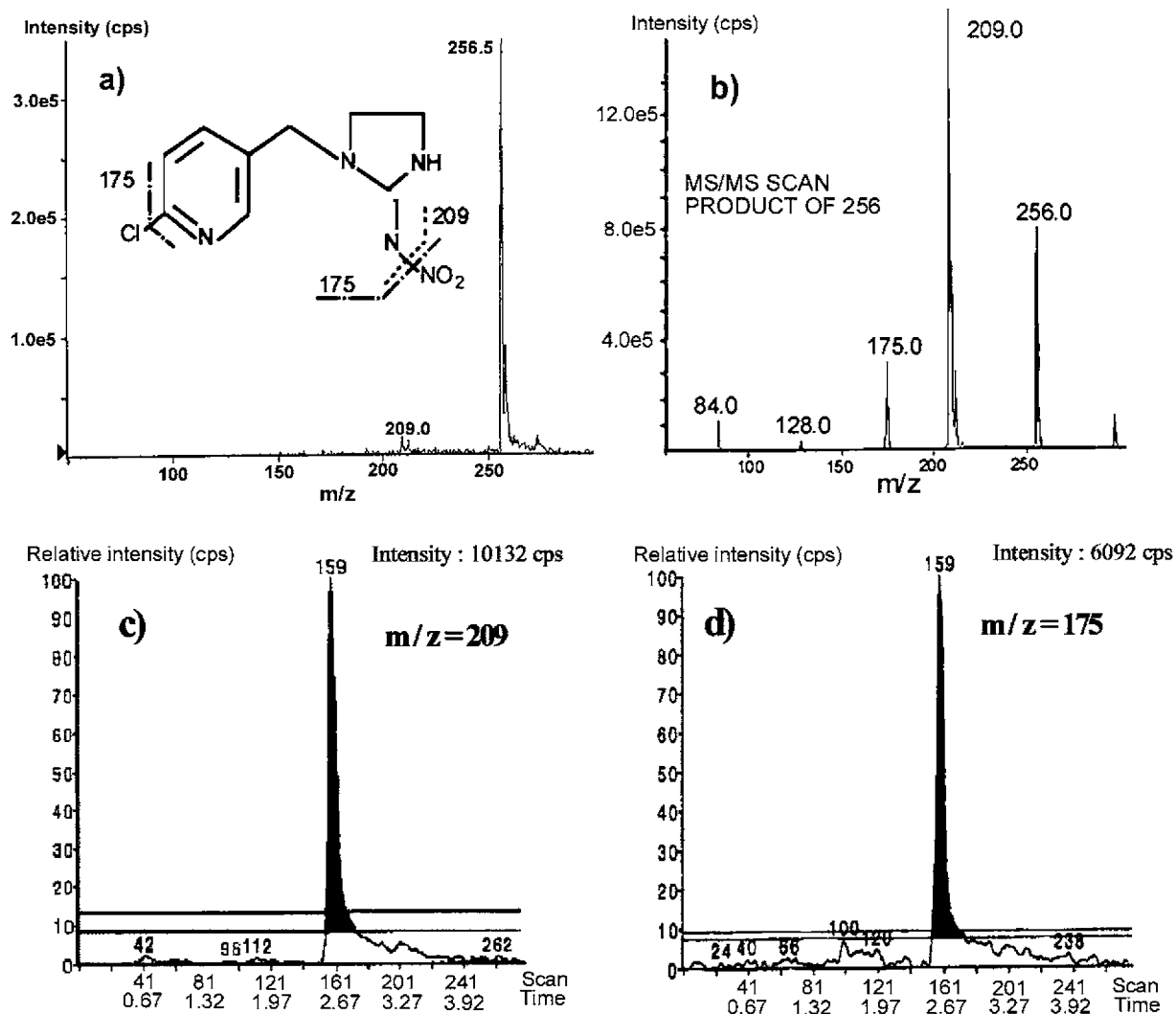


Figure 1. Detection of imidacloprid by mass spectrometry. (a) Mass spectra of imidacloprid corresponding to $[M + H]^+$ with its ^{35}Cl and ^{37}Cl signals. The formula of imidacloprid is inset with a diagram showing the locations of fragmentations for the following tandem mass spectrometry. (b) MS/MS spectra of the $m/z = 256$ parent ion (^{35}Cl), exhibiting the product ions of imidacloprid at $m/z = 209$ and at $m/z = 175$. Two chromatograms of a soil sample (spiked before extraction with imidacloprid at $1 \mu\text{g}/\text{kg}$) are shown in (c) at $m/z = 209$ and in (d) at $m/z = 175$. The relative intensity scales correspond to 100% of the peak height.

was transferred to conical tubes. Additionally, the flask was rinsed twice with 20 mL of dichloromethane, and this solution was added to the conical tubes. The organic phase (the lower phase) was extracted and evaporated under a N_2 flow. The oily residue was diluted with 2 mL of hexane and treated ultrasonically for 5 min. One milliliter of ACN/ H_2O (50/ 50) was added to the residue, and the resultant mixture was centrifuged (4000 rpm) for 5 min. The upper phase was pipeted, transferred into 1.5-mL Eppendorf tubes, and centrifuged (1200 rpm) for 5 min. A $100\text{-}\mu\text{L}$ aliquot of the upper phase was sampled and added to $10 \mu\text{L}$ of antipyrine (2 ng/ mL) in ACN/ H_2O (50/ 50). A total of $25 \mu\text{L}$ was injected in HPLC.

(4) Standards Solutions, Calibrations Solutions, and Quality Control Samples. A typical run consisted of unknown samples included within series of injections of known material in order to check retention times (RT) and intensities of signals. Pure product samples were prepared with ACN/ H_2O (50/ 50) at $10 \mu\text{g}/\text{kg}$. Blank samples were obtained from the extraction of each blank matrix. Six calibration samples were prepared by spiking blank

extracts with standard solutions. Fortification levels were 0.5, 1, 5, 10, 15, and $20 \mu\text{g}/\text{kg}$. Quality control samples were also used to test the reproducibility within a run. They were prepared, for each matrix, from blanks spiked with imidacloprid before extraction. In this case, fortification levels were 2 and $5 \mu\text{g}/\text{kg}$. Other blank samples, supplemented at 1, 10, and $18 \mu\text{g}/\text{kg}$ and then extracted, were also used in order to test the repeatability for each matrix. Thus, a typical run for analyzing 10 unknown samples had at least 26 injections. The 16 additional samples were: the pure product, the eluting solution, the blank matrix without the external standard, the blank matrix, 8 calibration samples for quantification (the extreme levels being repeated twice), and 4 quality control samples (2 levels repeated twice).

Instrumentation. (1) LC/ APCI-MS/ MS Instrument. The Perkin-Elmer system (Framingham, USA) consisted of a LC pump and an injector of the Perkin-Elmer Series 200 and a mass spectrometer (Perkin-Elmer Sciex API 365) with an atmospheric source. The system was equipped with a binary solvent pump, an autosampler, and a MS system coupled with an analytical work

Table 1. Ions Monitored under the MRM and SIM Mode by LC/MS/MS^a

compound	molecular mass (g/mol)	precursor ion ^b (<i>m/z</i>)	mass transition (<i>m/z</i> → <i>m/z</i>)	
			quantification	confirmation
imidacloprid	255.7	256.0	256.0 → 209.0	256.0 → 175.0
antipyrine	188.2	189.0	189.0 → 56.0	

^a Imidacloprid (precursor ion at *m/z* = 256.0) was quantified with the *m/z* = 209.0 product ion. The data were confirmed with the ratio of the *m/z* = 175.0 to the *m/z* = 209.0 ion signals. Antipyrine (precursor ion at *m/z* = 189.0) was used as the external standard and was quantified with its *m/z* = 56.0 product ion. ^b Positive ionization mode.

station. The MS system was constituted of a standard atmospheric-pressure ionization source configured as APCI. The LC system was fitted with C8 BDS Hypersil (4.6 × 150 mm) for the analysis of soils. For the analysis of plants and pollens, the LC system was fitted with a C₁₈ Supelcosil ABZ + (150 mm × 4.6 mm) (Supelco Park, PA).

(2) LC Conditions. Separations were carried out at room temperature (20 °C). A 25-μL aliquot was injected for soils and pollens into the LC/MS/MS system. For plants, the injected volume was 20 μL. The mobile phase consisted of a mixture of ACN/H₂O (40/60) and 0.2% acetic acid. The separation was optimized for each matrix and the flow rate was set at 1 mL/min for plants and 0.9 mL/min for soils and pollens, for 6 min. Prior to entering the source of the mass spectrometer, the LC column effluent was not splitted.

(3) APCI-MS/MS Conditions. The APCI-MS interface was operated in the positive mode under the following conditions: 400 °C for gas temperature in the nebulizer, 20.0 V for the declustering potential, and 15 eV for the collision-induced dissociation. Nebulizing gas (compressed air) pressure was 4 bar, and the corona current was 3.0 μA. The collision gas was N₂. The electron multiplier voltage was 2 kV. The dwelling time was 200 ms. Full-scan LC/MS chromatograms were obtained by scanning from *m/z* = 50 to *m/z* = 800 (Figure 1a). Mass calibration was done with polypropylene glycol. Selected-ion monitoring (SIM) of the most abundant ion was used for quantification. The detector of the mass spectrometer was tuned for the maximum sensitivity of the parent ion at *m/z* = 256 ± 0.5 and of the product ions at *m/z* = 209 and at *m/z* = 175 (Figure 1b). The specificity was obtained by following these two specific fragmentations of imidacloprid. The first fragment, at *m/z* = 209, is due to the loss of NO₂. The second fragment, at *m/z* = 175, is due to the losses of both NO₂ and ³⁵Cl (Table 1, Figure 1c and d).

RESULTS AND DISCUSSION

Validation. One of the major difficulties was to keep both good selectivity levels and high recovery rates (see below). Then specificity is given by the chromatographic separation according to the LC conditions. In our conditions, RT was typically 2.4 min for the plant samples and 2.8 min for both the pollen and soil samples. Within a run (including the pure product, calibration samples, control samples, and unknown samples), RT was constant with a relative standard deviation never exceeding 2.5%. The specificity was further assured by following the two characteristic fragmentations of imidacloprid. The chromatograms of the selected product ions are clearly defined with a high S/N ratio. From multiple reaction monitoring (MRM) experiments, the ratio

Table 2. Linearity of the Imidacloprid Calibrations for Analysis in Soils, in Plants, and in Pollens^a

matrix	no calibrtn	corr coeff	intercept (μg/kg)	intercept std dev	slope	slope std dev
soils	1	0.9929	-0.663	0.723	1.0895	0.0654
	2	0.9983	-0.306	0.346	1.0375	0.0309
	3	0.9995	0.112	0.183	0.9871	0.0163
plants	1	0.9999	-0.023	0.076	1.0025	0.0068
	2	0.9992	0.205	0.218	0.9774	0.0194
	3	0.9982	-0.049	0.420	1.0073	0.0348
	4	0.9995	0.079	0.215	0.9928	0.0178
	5	0.9926	0.114	0.682	0.9958	0.0609
pollens	1	0.9989	0.182	0.258	0.9805	0.0231
	2	0.9973	0.124	0.409	0.9904	0.0366
	3	0.9926	0.300	0.660	0.9701	0.0589
	4	0.9985	0.137	0.293	0.9868	0.0263

^a These data were used to establish the linearity with a confidence level of 99% (Student's and Fisher's tests).

of the product ion signals (175/209) gives an averaged value close to 0.45. The latter value comes from the analysis of standards as well as from the analysis of each spiked matrix (soils, plants, flowers, pollens). When unknown samples were analyzed, the ratio did not vary by more than 20% for a given matrix, thus satisfying the corresponding quality criteria. Another ratio, using the [³⁵Cl]- and the [³⁷Cl]-imidacloprid signals, was also checked as a supplementary criterion of specificity. As mentioned above, antipyrine was systematically used as an external standard in order to check the retention time and to correct the intensity of signals.

Calibration graphs were plotted using at least six calibration samples from 0.5 to 20 μg/kg. The graphs plotted the ratio of the imidacloprid signal to the antipyrine signal versus the spiked levels. For each matrix, at least three calibrations were made. The calibration results, including statistics, are shown for each matrix in Table 2. For each calibration, the correlation coefficient was always better than 0.992. Thus, the calibration statistics shown a very satisfactory linearity with a confidence level of 99% in the whole of the calibration range (from 0.5 to 20 μg/kg). Note that statistical analysis was performed on the slope, the intercept, and the variance with the *t* test and *F* test (Statgraphics plus 5.1, Sigma Plus). Additionally, the reproducibility of the calibration graphs for several months gave variation coefficients (VC) of the slopes of 12.2% for soils, 24.5% for plants, and 20.7% for pollens.

For determination of both the LOD and the limit of quantification (LOQ), the noise was first measured from 10 injections of blanks for each matrix. Measurements were done at *m/z* = 175, which corresponds to the less intense product ion of imidacloprid. The noise centered around the retention time of imidacloprid was then averaged. The LOD was determined as the level for which

Table 3. Repeatability ($n = 6$) and Recovery Rates (R) for the Analysis of Imidacloprid in Soils, in Plants, and in Pollens, at Three Fortification Levels (1, 10, and 18 $\mu\text{g}/\text{kg}$)

matrix	amount ($\mu\text{g}/\text{kg}$)		std dev	VC (%)	R (%)
	added	found (av, $n = 6$)			
soils	1	0.77	0.038	4.9	77.1
	10	9.48	1.20	12.7	94.8
	18	16.3	1.11	6.8	90.6
plants	1	0.85	0.078	9.2	84.6
	10	7.57	0.649	8.6	75.7
	18	13.7	0.68	5.0	75.9
pollens	1	0.85	0.045	5.3	84.9
	10	8.05	0.36	4.5	80.5
	18	14.00	1.57	11.2	78.0

Table 4. Reproducibility and Recovery Rates (R) of n Analyses of Imidacloprid in Soils, in Plants, and in Pollens, at Two Fortification Levels (2 and 5 $\mu\text{g}/\text{kg}$)

matrix	amt added ($\mu\text{g}/\text{kg}$)	n	amt found ($\mu\text{g}/\text{kg}$)(av)	std dev	VC (%)	R (%)
soils	2	10	1.7	0.18	10.7	85.2
	5	10	4.3	0.6	14.1	85.6
plants	2	20	1.6	0.28	17.5	78.3
	5	20	4.1	0.50	12.2	81.9
pollens	2	12	1.7	0.17	10.1	84.5
	5	11	4.1	0.61	15.0	80.9

the S/N ratio was greater than 3. It was 0.1 $\mu\text{g}/\text{kg}$ in soils and plants. The LOD was 0.3 $\mu\text{g}/\text{kg}$ in pollens, which is very similar to results from statistical calculations. For instance, calculation from calibration curves using DIN 32645 gave a LOD between 0.26 and 0.32 $\mu\text{g}/\text{kg}$ for pollens. The LOQ was first determined according to a S/N ratio greater than 10. It was then defined as the lowest quantified quantity with repeatability in agreement with all the quality criteria. The recovery rates (R , i.e., quantified amount/ real amount) were always between 70 and 110%. The LOQ was 1 $\mu\text{g}/\text{kg}$ for soils, plants, and pollens.

For each matrix, the repeatability was tested six times for three fortification levels of imidacloprid (1, 10, and 18 $\mu\text{g}/\text{kg}$). The blanks were spiked before extraction. Variation coefficients and recovery rates are depicted in Table 3. Values of VC were always lower than 13% for the soils, lower than 10% for the plants, and lower than 12% for pollens. This is in agreement with the quality criteria. From a comparison with calibration samples, the recovery rates were (i) in the 77–95% range for soils, (ii) in the 75–85% range for plants, and (iii) in the 78–85% range for pollens (Table 3). Note that the relative amounts of imidacloprid, given as results in the present paper, were not corrected by taking into account the recovery rates. Thus, these amounts can be considered as being minimized by about 5–20%.

The reproducibility was determined for two fortification levels (2 and 5 $\mu\text{g}/\text{kg}$) for each matrix. It was deduced from analysis of quality control samples spiked before extraction. The recovery rates were also calculated. They range between 78 and 86% (Table 4). The variation coefficients were lower than 18%. Finally, the method respects the criteria (retention time, signal-to-noise ratio, ratio between the products ions, repeatability, reproducibility) from

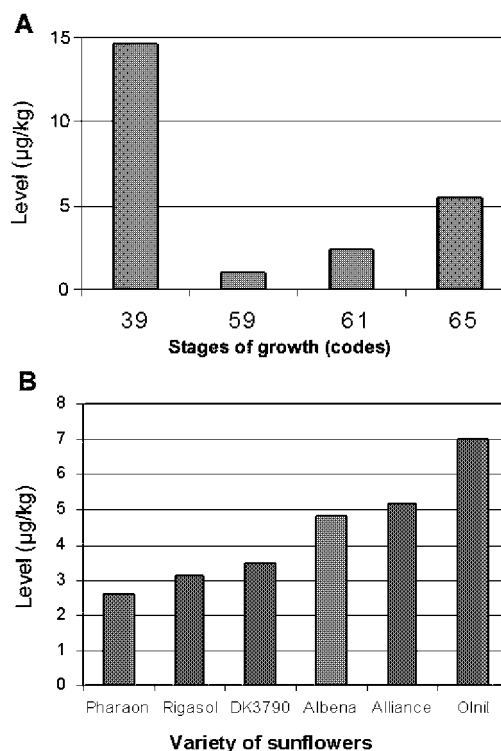


Figure 2. (A) Levels of imidacloprid ($\mu\text{g}/\text{kg}$) in sunflower as a function of the growing stages. These data correspond to averaged values from five varieties of sunflower growing in the same area. At stage 39, the bud is growing away from leaves. At stage 59, the capitule is formed and closed; flowers can be seen across the bracts. Stage 61 corresponds to the beginning of flowering. Full flowering occurs at stage 65.²⁴ The imidacloprid level was averaged (i) in leaves and stems at stage 39 and (ii) in capitules at stages 59, 61, and 65. As expected, the levels of imidacloprid in sunflower sharply decrease up to stage 59. However, from this stage onward, all varieties exhibit an increase of the imidacloprid content in capitules. (B) Levels of imidacloprid ($\mu\text{g}/\text{kg}$) in the capitules of sunflower at stage 59 as a function of the variety of sunflower. All the sunflowers were grown under the same experimental conditions in another area than for (A).

the directive 96/ 23/ EC, which is especially designed for banned substances.

Applications of the Method. We report data from the analysis of 74 samples of soils, 194 samples of plants (including flowers), and 64 samples of pollens. A total of 7 soils, 17 plants, and 11 pollens were sampled from organically farmed areas and served for validation of the method. No signal of imidacloprid was detected, and no interference occurs in these samples. These results show the absence of imidacloprid when the field has never been treated with imidacloprid. Additionally, they confirm that there is no contamination during sampling, storage, or analytical procedures.

(1) **Soils.** Analyses were performed from soils with various compositions (clayey, alluvial, chalky) so our results reflect a global and heterogeneous situation in France. When the field was treated with imidacloprid (seed dressing), imidacloprid is detected unambiguously in the soils at the end of the cultivation. The mean value is 12 $\mu\text{g}/\text{kg}$ over the set of treated soils. The sensitivity of the method is such that the amount of imidacloprid in soils can be investigated in the microgram per kilogram range. Thus, the fate of imidacloprid in soils, 1 or 2 years after treatment, is now accessible. Here, the results from 33 soils, which were planted

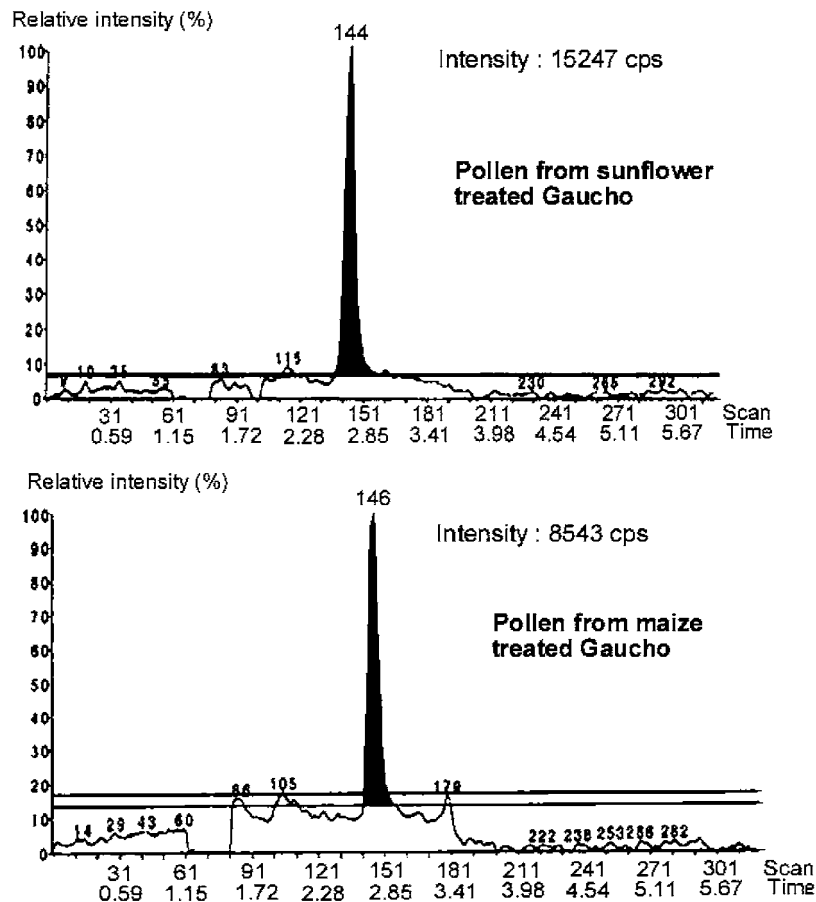


Figure 3. Typical chromatograms of pollen (detection at $m/z = 209$). (A) Pollen from sunflower treated with the Gaucho seed dressing ($1.7 \mu\text{g}/\text{kg}$). (B) Pollen from maize treated with the Gaucho seed dressing ($1.4 \mu\text{g}/\text{kg}$). The relative intensity scale corresponds to 100% of the peak height, whereas the amounts of imidacloprid were deduced from peak integration according to the calibration of each run. Analytical data satisfied the criteria reported in the validation section.

with treated seed 1 or 2 years before the sampling, were divided in different classes according to the residual concentration of imidacloprid. Only 3% of such soils did not have imidacloprid ($<0.1 \mu\text{g}/\text{kg}$), whereas 19% of these soils gave values between 0.1 and $1 \mu\text{g}/\text{kg}$. As a matter of fact, 78% of untreated soils still contain more than $1 \mu\text{g}/\text{kg}$ imidacloprid with an average value of $6 \mu\text{g}/\text{kg}$. These results confirm the long persistence of imidacloprid in soils. Note that, as shown below, such a persistence in soils is the origin of the contamination of the next crops, even if they are not treated by a imidacloprid seed dressing.

(2) Plants. The method is suited for the analysis of a great variety of plants. Among the various plants that contain imidacloprid from seed dressing or from contaminated soils, we analyzed maize, rape, wheat, and sunflower. The results show that all these plants can still contain imidacloprid during flowering. Sunflower was studied thoroughly because the Gaucho treatment was suspected of having harmful effects on bees during foraging. Despite the fact that the amount of imidacloprid in growing plants sharply decreases with time, our data show a new phenomenon arising from the formation of the capitule (the head part) of sunflower. Actually, contamination stops decreasing and, on the contrary, starts to increase (Figure 2A). The increase of imidacloprid concentration during flowering was observed for five varieties of sunflower. The final concentration in flowers clearly depends on the variety. During flowering, the ascent of imidaclo-

prid in the capitule leads to a final amount of toxin in flowers which is in the range of $5\text{--}10 \mu\text{g}/\text{kg}$ (averaged values). The sensitivity of the method was further exploited to follow several varieties of sunflower and to measure the uptake of imidacloprid in untreated sunflowers. A first point is given in Figure 2B, where six varieties can be compared. At the first stage of flowering, imidacloprid already ranges from 2.5 (Pharaon) to $7 \mu\text{g}/\text{kg}$ (Olnil) in capitules. A second point comes from the study of untreated sunflowers growing in fields treated with the Gaucho formulation 1 year before. Here, untreated sunflowers are able to take up the residual imidacloprid in contaminated soils. Capitules contain an averaged value of $1.5 \mu\text{g}/\text{kg}$ of imidacloprid, during flowering.

(3) Pollens. Figure 3 shows typical chromatograms of pollen from sunflower and maize that were treated with the Gaucho seed dressing. Note that the method gives unambiguous signals even for amounts of imidacloprid near the limit of quantification ($\text{LOQ} = 1 \mu\text{g}/\text{kg}$). A set of 24 pollens was sampled and analyzed from sunflowers treated the same year. The results of this study show that imidacloprid was not detected ($\text{LOD} = 0.3 \mu\text{g}/\text{kg}$) in 17% of samples. A proportion of 25% of pollens was positive, with amounts of imidacloprid not exceeding $1 \mu\text{g}/\text{kg}$. However, 58% of pollens contained imidacloprid at levels from 1 to $11 \mu\text{g}/\text{kg}$, with a mean value of $3 \mu\text{g}/\text{kg}$. A preliminary study on maize was done by sampling five pollens from treated crops. One of these pollens did not contain imidacloprid whereas the other four gave

amounts from 1 to 3 $\mu\text{g}/\text{kg}$ (average 2 $\mu\text{g}/\text{kg}$). Obviously, the number of samples remains insufficient to describe the fate of imidacloprid in maize pollens, but the contamination of these pollens can no longer be neglected.

CONCLUSIONS

A specific extraction method has been developed with high recovery rates to analyze imidacloprid in soils, in plants, in flowers, and in pollens. New extraction schemes coupled to LC/APCI-MS/MS led to a very sensitive method (LOD = 0.1 $\mu\text{g}/\text{kg}$, LOQ = 1 $\mu\text{g}/\text{kg}$). The present method can be classified as a confirmatory method for the analysis of imidacloprid or its metabolites according to the directive 96/23/EC designed for analysis of banned substances.^{25–29} Analyses are relatively fast and have a reasonable cost. This technique provides a valuable tool to evaluate the bioavailability of imidacloprid in the environment. It is complementary to techniques using ^{14}C -labeled compounds, since samples are collected on a realistic scale. The method is also suitable for investigating the residual imidacloprid 1 or 2 years after the initial treatment.

Our data were acquired under Good Laboratory Practices and respected strict protocols. The results demonstrated that imidacloprid contaminates the head part of the sunflower during flowering. Actually, amounts of this toxin increase, from the capitule formation, to reach ~ 10 $\mu\text{g}/\text{kg}$ in flowers during the foraging activity of bees. Obviously, such an amount clearly

depends on several parameters such as sunflower variety and the dose of seed dressing.³⁰ Pollens from treated sunflowers were found to be contaminated with imidacloprid amounts at a few micrograms per kilogram. The averaged value is 3 $\mu\text{g}/\text{kg}$. This corroborates results from ^{14}C experiments for which a total residue content of ~ 13 $\mu\text{g}/\text{kg}$ was found.³¹ Furthermore, Schnuck et al. also reported 3.3 $\mu\text{g}/\text{kg}$ in pollen and 1.9 $\mu\text{g}/\text{kg}$ in nectar.¹⁰

Others results strongly suggest that both sunflower and maize should exhibit a similar behavior. Actually, maize flowers contain the toxin with values between 1 and 20 $\mu\text{g}/\text{kg}$. Results for maize pollens are also in the range of a few micrograms per kilogram.

Data from the soils confirmed that small amounts of imidacloprid remain at the end of cultivation (at the averaged level of 12 $\mu\text{g}/\text{kg}$). However, 1 year after the treatment, the averaged level of imidacloprid is still at 6 $\mu\text{g}/\text{kg}$. This is consistent with laboratory experiments which reported that the half-life of imidacloprid in soils vary from 3 to 6 months.¹² Such a long persistence is the origin of the imidacloprid uptake by untreated plants growing on previously treated fields.

Finally, the present method can be used to study the migration or penetration of imidacloprid in soils. It is also possible to depict the distribution of the toxin in roots, leaves, stems, flowers, and pollens. The method was adapted to analyze honeys (not shown) in which imidacloprid does not occur significantly. Other extensions have been done to investigate individually several metabolites of imidacloprid (urea, monohydroxy, guanidine, and olefin derivatives).^{26,32} Adaptation of the method to water, fruits, and vegetables can also be done very easily. First assays in apples and peaches, from trees treated with another formulation (Confidor), have already revealed high signals of imidacloprid.

The use of the Gaucho seed dressing on sunflower has been suspended in France from 1999, with regard to the potential risk for bees.

ACKNOWLEDGMENT

This research was done for the French Ministries of Agriculture and Environment, with the financial support of the 1221/97/EC program. The authors thank J.-C. Tabet, M.-F. Grenier-Loustalot, S. Lecoublet, V. Charrier, and F. Westall for their help.

-
- (25) Bonmatin, J.-M.; Moineau, I.; Lecoublet, S.; Colin, M. E.; Fléché, C.; Bengsch, E. R. *Proceedings of the 30th congress of the French Group of Pesticides, Produits Phytosanitaires: Analyse, résidus, métabolites, ecotoxicologie, modes d'action*; Couderchet, M., Transferts; Eullaffroy, P., Vernet, G., Eds.; Presses Universitaires de Reims: Reims, 2001; pp 175–181.
- (26) Bonmatin, J.-M. *Sciences* **2002**, *2*, 42–46.
- (27) Bonmatin, J.-M.; Moineau, I.; Lecoublet, S.; Colin, M.-E.; Fléché, C.; Bengsch, E. R. *Proceeding of the 3rd European Pesticide Residue Workshop*; Central Science Laboratory Ed.; *Pesticides in Food and drink*; York, 2000; p 134.
- (28) Bonmatin, J.-M.; Moineau, I.; Lecoublet, S.; Colin, M. E.; Fléché, C.; Bengsch, E. R. *Rev. Fr. Apiculture* **2000**, *609*, 360–361.
- (29) Bonmatin, J.-M.; Moineau, I.; Colin, M. E.; Bengsch, E. R.; Lecoublet, S.; Fléché, C. Rapport de résultats 3 au Ministère de l'Agriculture et de la Pêche, Programmes 1999–2000 AFSSA-CNRS-INRA, 2000.
- (30) Bonmatin, J.-M.; Moineau, I.; Charvet, R.; Colin, M. E.; Fléché, C.; Bengsch, E. R. Behaviour of imidacloprid in fields. Toxicity for honey bees. In *Environmental Chemistry*; Springer: New York, in press.
- (31) Laurent, F.; Scalla, R. Rapport de synthèse au Ministère de l'Agriculture et de la Pêche, 3^e Âme Programme Communautaire pour l'apiculture, 2000.
- (32) Nauen, R.; Reckmann, U.; Armbrorst, S.; Stupp, H.; Elbert, A. *Pestic. Sci.* **1999**, *55*, 265–271.