



HAL
open science

TEM10 homodyne detection as an optimal small displacement and tilt measurements scheme

Vincent Delaubert, Nicolas Treps, Mikael Lassen, Charles C. Harb, Claude Fabre, Ping Koy Lam, Hans A. Bachor

► **To cite this version:**

Vincent Delaubert, Nicolas Treps, Mikael Lassen, Charles C. Harb, Claude Fabre, et al.. TEM10 homodyne detection as an optimal small displacement and tilt measurements scheme. 2006. hal-00087009

HAL Id: hal-00087009

<https://hal.science/hal-00087009>

Preprint submitted on 20 Jul 2006

HAL is a multi-disciplinary open access archive for the deposit and dissemination of scientific research documents, whether they are published or not. The documents may come from teaching and research institutions in France or abroad, or from public or private research centers.

L'archive ouverte pluridisciplinaire **HAL**, est destinée au dépôt et à la diffusion de documents scientifiques de niveau recherche, publiés ou non, émanant des établissements d'enseignement et de recherche français ou étrangers, des laboratoires publics ou privés.

TEM₁₀ homodyne detection as an optimal small displacement and tilt measurements scheme

V.Delaubert^{1,2}, N.Treps¹, M.Lassen^{2,3}, C.C.Harb², C.Fabre¹, P.K.Lam² and H-A.Bachor²

¹Laboratoire Kastler Brossel, 4 place Jussieu, case 74, Paris 75252 Cedex 05, France

²ACQAO, The Australian National University, Canberra ACT 0200, Australia and

³Department of Physics, DTU, Building 309, 2800 Lyngby, Denmark

(Dated: July 20, 2006)

We report an experimental demonstration of optimal measurements of small displacement and tilt of a Gaussian beam - two conjugate variables - involving a homodyne detection with a TEM₁₀ local oscillator. We verify that the standard split detection is only 64% efficient. We also show a displacement measurement beyond the quantum noise limit, using a squeezed vacuum TEM₁₀ mode within the input beam.

PACS numbers: 42.50.Dv; 42.30.-d; 42.50.Lc

Introduction

Measuring the transverse position of a laser beam seems to be a very basic task. One could think that the best way to retrieve such a simple information has been found years ago. However, we have proven recently that the detection devices which are traditionally used - split and quadrant detectors - are limited to an efficiency of 64 % [1]. This is a question of potentially great interest as they are used in many ultra sensitive applications including optical tweezers, atomic force microscopes, beam positioning for gravitational wave detectors and satellite alignment [2, 3, 4].

The purpose of this paper is to demonstrate the best possible measurements of beam displacement and tilt, for a given beam power and shape. Note that similar issues are addressed on the limits to the measurement of beam rotation about its propagation axis in reference [5]. We will first focus on the detection device, and will therefore analyse experimentally a split-detection and a homodyne detection scheme with a TEM₁₀ local oscillator (see Fig. 1), introduced theoretically in reference [1]. At the same time, we will present measurements of the quantum conjugated variable of the transverse displacement of the beam, the laser beam tilt [6]. Finally, we will focus on the laser beam itself, and show measurements beyond the fundamental limit imposed by the photon statistics of laser beams, using non classical beams. This demonstration allows displacement and tilt measurements that were masked or altered by quantum noise.

The paper is organized in the following way. We first give a brief definition of displacement and tilt of a TEM₀₀ mode beam, and introduce the notions of position and momentum of a Gaussian beam, which are two conjugate transverse observables. In section II, we quantitatively discuss the QNL for displacement and tilt measurements and show the improvement that can be achieved with squeezed light. In section III, we present how this new set of quantum variables can be accessed with a split detection, the conventional scheme used for beam displacement measurements. The results obtained provide

a reference for a homodyne detector with a TEM₁₀ local oscillator presented in section IV. In section V, we show how to perform sub QNL measurements with both schemes and present experimental homodyne detection results in this regime. In the last section, a comparison between both schemes is presented, in perfect agreement with theoretical predictions, and showing an improvement with the homodyne detection that matches the predicted detection efficiency of 64% .

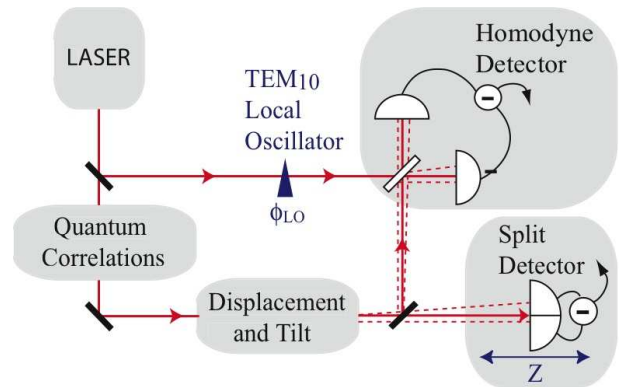


FIG. 1: Block diagram of our experimental setup. We compare the performances of two measurement schemes - split detection and homodyne detection with a TEM₁₀ local oscillator - to retrieve displacement and tilt of a Gaussian beam. We show how to modify the input beam using quantum correlations to perform measurements beyond the Quantum Noise Limit.

I. DISPLACEMENT AND TILT OF A GAUSSIAN BEAM

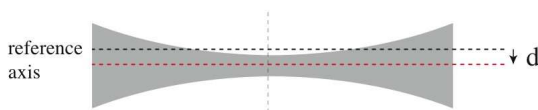
Displacement and tilt of a single-mode TEM₀₀ laser beam are very intuitive notions, they refer to macroscopic properties of a beam, as shown in figure (2). We assume here that the beam is constrained to one dimension,

namely the figure plane of the paper, considering that the non represented transverse component is gaussian. A displacement corresponds to a translation of the beam by a distance d along the transverse direction, whereas a tilt corresponds to a rotation of the propagation axis by an angle θ . The tilt of a laser beam is linked to the transverse momentum of the beam, in the limit of small angles, given by the following expression

$$p = \frac{2\pi \sin \theta}{\lambda} \simeq \frac{2\pi\theta}{\lambda}, \quad (1)$$

where λ is the optical wavelength. Note that displacement and tilt are defined relative to a particular transverse reference plane. For instance, in figure (2), we have chosen the beam waist plane as reference transverse plane.

a) Displaced beam



b) Tilted beam

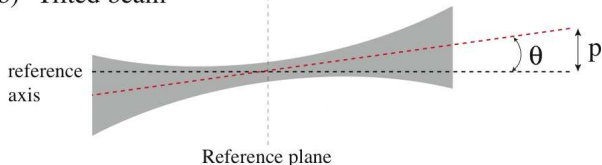


FIG. 2: Displacement and tilt definition. In the 2-dimensional case, the displacement d corresponds to a translation of the beam in the transverse direction. The tilt θ corresponds to a rotation of the propagation axis.

In the case of small displacement and tilt, i.e. for $d \ll w_0$ and $\theta \ll \lambda/w_0$ - where w_0 is the beam waist of the incident TEM_{00} mode, we can Taylor expand the displaced $E_d(x)$ and tilted $E_p(x)$ gaussian field to first order, yielding [1, 6]

$$E_d(x) \approx E(x) + d \cdot \frac{\partial E(x)}{\partial x} \quad (2)$$

$$E_p(x) \approx E(x) + ip \cdot xE(x). \quad (3)$$

The equations can be rewritten into

$$E_{d,p}(x) = A_0 \left[u_0(x) + \left(\frac{d}{w_0} + i \frac{w_0 p}{2} \right) u_1(x) \right], \quad (4)$$

where $u_n(x)$ refers to the Hermite Gauss TEM_{n0} mode [7]. A_0 is the amplitude of the incident TEM_{00} mode and identifies with the one of the displaced and tilted beam at first order in d and p . Eq. (4) shows that the information of displacement and tilt of a TEM_{00} laser

beam can be extracted by measuring the TEM_{10} mode component of the field. Any displacement modulation is transferred to the in-phase amplitude of the TEM_{10} mode relative to the "carrier" (TEM_{00} mode), whereas any tilt modulation is transferred to the TEM_{10} component in quadrature relative to the TEM_{00} mode.

In order to give a quantum mechanical description of displacement and tilt of a laser beam, we need to take into account the quantum noise of all the optical modes of the beam, including the vacuum modes. We can write the positive frequency part of the electric field operator in terms of photon annihilation operators \hat{a} . The field operator is then given in its more general form by:

$$\hat{\mathcal{E}}^+(x) = i \sqrt{\frac{\hbar\omega}{2\epsilon_0 c T}} \sum_{i=0}^{\infty} \hat{a}_i u_i(x), \quad (5)$$

where ω is the field frequency, T is the integration time, $u_n(x)$ are the transverse beam amplitude functions of the TEM_{n0} modes, and \hat{a}_n are the corresponding annihilation operators. \hat{a}_n can be written in the form of $\hat{a}_n = \langle \hat{a}_n \rangle + \delta \hat{a}_n$, where $\langle \hat{a}_n \rangle$ describes the coherent amplitude and $\delta \hat{a}_n$ is the quantum noise operator assumed small in the linearization approximation.

For a mean photon number N , defined by $|\langle \hat{a}_0 \rangle|^2$ in the small displacement and tilt regime, the quantum counterpart of equation (4), assuming that only u_0 and u_1 are non-vacuum modes, is

$$\hat{\mathcal{E}}^+(x) = i \sqrt{\frac{\hbar\omega}{2\epsilon_0 c T}} \left[\sqrt{N} \left(u_0(x) + \left(\frac{d}{w_0} + i \frac{w_0 p}{2} \right) u_1(x) \right) + \sum_{i=0}^{\infty} \delta \hat{a}_i u_i(x) \right], \quad (6)$$

where we have introduced the mean value of position and momentum quantum operators of a laser beam, $d = \langle \hat{x} \rangle$ and $p = \langle \hat{p} \rangle$, respectively. These quantum operators are given by

$$\hat{x} = \frac{w_0}{2\sqrt{N}} \hat{X}_{a_1}^+ \quad (7)$$

$$\hat{p} = \frac{i}{w_0 \sqrt{N}} \hat{X}_{a_1}^-, \quad (8)$$

where we see that position and momentum are linked to the amplitude and phase quadrature of the TEM_{10} mode component of the field, respectively given by

$$\hat{X}_{a_1}^+ = (\hat{a}_1 + \hat{a}_1^\dagger) \quad (9)$$

$$\hat{X}_{a_1}^- = i(\hat{a}_1 - \hat{a}_1^\dagger). \quad (10)$$

Moreover, position and momentum are conjugate observables and satisfy the following commutation relation [6]

$$[\hat{x}, \hat{p}] = \frac{i}{N}. \quad (11)$$

In this section, we have defined displacement and tilt of a Gaussian beam, given the general quantum description of such a field, and shown that these former quantities were closely linked to position and momentum, two quantum observables. Using this interesting property, reference [6] already proposed a scheme for continuous variable spatial entanglement for bright optical beams, involving two beams respectively squeezed in position and momentum mixed on a 50 : 50 beam-splitter.

II. QUANTUM NOISE LIMIT FOR DISPLACEMENT AND TILT MEASUREMENTS

The use of classical resources (i.e. coherent laser beams) sets a lower bound to detection performances, which is called the quantum noise limit (QNL) and arises from the random time arrival of photons on the detector. In the case of displacement measurement of a laser beam, the transverse displacement d_{QNL} of a TEM_{00} laser beam corresponding to a Signal to Noise Ratio (SNR) of 1, is found to be [8, 9]

$$d_{QNL} = \frac{w_0}{2\sqrt{N}}, \quad (12)$$

where w_0 is the waist of the beam, and N its total number of photons detected in the interval $T = 1/RBW$, where RBW is the resolution bandwidth. Ideally, T is maximized according to the stability of the physical system. For instance in the case of bits read-out in optical disc devices, RBW roughly corresponds to the scanning frequency. For a $100 \mu\text{m}$ waist, 1 mW of power at a wavelength of $\lambda = 1 \mu\text{m}$, with $RBW = 100 \text{ kHz}$, the quantum noise limit is for instance given by $d_{QNL} = 0.2 \text{ nm}$. Note that during test or characterization procedures, the precision can be increased by averaging with the spectrum analyzer, for instance by reducing the video bandwidth (VBW). The QNL effectively corresponds to the minimum measurable displacement when $VBW = RBW$, without averaging.

Similarly, the QNL for momentum measurements can be defined as

$$p_{QNL} = \frac{1}{w_0\sqrt{N}}. \quad (13)$$

In the same conditions as the ones defined above, the QNL for momentum measurement is $p_{QNL} = 4.10^{-2} \text{ m}^{-1}$, corresponding to a tilt angle of $\theta_{QNL} = 7 \text{ nrad}$.

In order to perform measurements beyond the QNL, i.e. for a given T , we have shown in reference [10] that filling the appropriate transverse mode of the input field with squeezed light is a necessary and sufficient condition. We call this mode the noise-mode of detection [11].

For example, using 3 dB of squeezing in the appropriate component of the beam for a displacement measurement leads to a noise reduction of a factor 2. The SNR is quadratic in d as the signal corresponds to the intensity

of the TEM_{10} component of the displaced field, and the new quantum limit is thus given by $d_{SQZ} = d_{QNL}/\sqrt{2}$. It is important to note that, as imposed by Heisenberg inequalities, the measurement of the conjugated observable - the momentum in this case - is degraded.

III. SPLIT DETECTION

A. Theory

The conventional way to measure the displacement of a laser beam is to use a split detector. As shown in figure (3a), the difference between the intensity on each side of the split detector yields a photocurrent proportional to the displacement. This technique is widely used notably for beam alignments, particle tracking and atomic force microscopy. Nevertheless, such a detection device only accesses the beam position in the detector plane, and is totally insensitive to the orientation of the propagation axis of the beam (i.e. tilt). Consider the evolution of the field operator of Eq. 6 under propagation along the z axis, we get

$$\begin{aligned} \hat{\mathcal{E}}^+(x, z) = & i\sqrt{\frac{\hbar\omega}{2\epsilon_0 cT}} \left[\sqrt{N}u_0(x, z) \right. \\ & + \sqrt{N} \left(\frac{d}{w_0} + i\frac{w_0 p}{2} \right) u_1(x, z) e^{i\phi_G(z)} \\ & \left. + \sum_{i=0}^{\infty} \delta\hat{a}_n u_n(x, z) e^{in\phi_G(z)} \right], \quad (14) \end{aligned}$$

where $u_n(x, z)$ is the Hermite Gauss TEM_{n0} mode, $\phi_G(z)$ is the Gouy phase shift, which equals $\arctan(z/z_R)$, where z_R is the Rayleigh range of the beam. The displacement and tilt ratio varies along z because of the Gouy phase shift (i.e. diffraction), up to be perfectly inverted in the far field where $\phi_G(\infty) = \pi/2$. This Fourier Transform relation is a well known result in classical optics, for which a displacement in the focal plane of a simple lens is changed into an inclination relative to the propagation axis. Therefore, if the exact amount of tilt and displacement is needed in a particular transverse plane, for instance at $z = 0$, displacement can be measured in this plane (or in its near field), whereas tilt can only be accessed in its far field, as presented in figure (3b).

The field presented in Eq. 14 is detected via a split detector whose position is varied along the z axis. The photocurrent is directly proportional to the difference of intensity incident on the two halves of the detector

$$\begin{aligned} \hat{I}_-(z) = & \int_0^{\infty} \hat{\mathcal{E}}^+(x, z) \hat{\mathcal{E}}^{+\dagger}(x, z) dx \\ & - \int_{-\infty}^0 \hat{\mathcal{E}}^+(x, z) \hat{\mathcal{E}}^{+\dagger}(x, z) dx, \quad (15) \end{aligned}$$

and replacing $\hat{\mathcal{E}}^+(x, z)$ with the previous expression

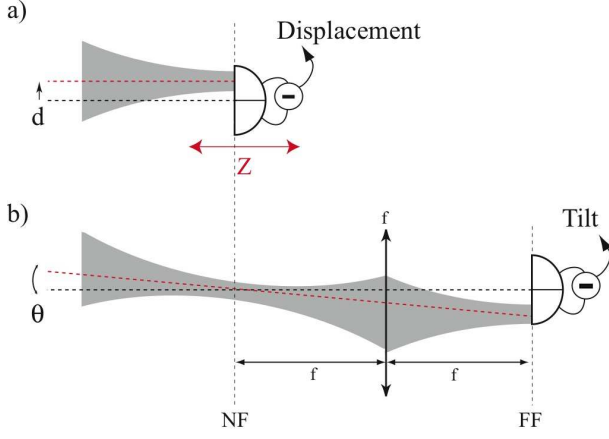


FIG. 3: Measuring displacement and tilt of a Gaussian beam with a split detector. Taking a reference plane where displacement and tilt components are needed, displacement can be measured directly with a split detector in the near field (NF) of the reference plane, whereas tilt can be accessed in its far field (FF).

yields, for very small displacement and tilt

$$\hat{I}_-(z) = \frac{\hbar\omega}{2\epsilon_0 c T} \left[2Nc_1 \left(\frac{d}{w_0} \cos \phi_G(z) + \frac{w_0 p}{2} \sin \phi_G(z) \right) + \sqrt{N} \sum_{p=0}^{\infty} c_{2p+1} \delta \hat{X}_{2p+1}^{-(2p+1)\phi_G(z)} \right], \quad (16)$$

where $\delta \hat{X}_n^\phi = \delta \hat{a}_n e^{-i\phi} + \delta \hat{a}_n^\dagger e^{i\phi}$ refers to the noise of the quadrature of the $\text{TEM}_{n,0}$ mode defined by the angle ϕ , and

$$\begin{aligned} c_n &= \int_0^\infty - \int_{-\infty}^0 u_n(x) u_0(x) dx \\ &= \int_{-\infty}^\infty u_n(x) u_f(x) dx, \end{aligned} \quad (17)$$

where u_f is the flipped mode, which is a TEM_{00} mode whose transverse profile has a π phase shift at the origin for $z = 0$ [13]. Its decomposition in the TEM_{pq} basis during propagation is given by

$$u_f(x, z) = \sum_{p=0}^{\infty} c_{2p+1} u_{2p+1}(x, z) e^{i(2p+1)\phi_G(z)}, \quad (18)$$

and the fluctuations of its amplitude quadrature operator are found to be

$$\delta \hat{X}_f^+ = \sum_{p=0}^{\infty} c_{2p+1} \delta \hat{X}_{2p+1}^+, \quad (19)$$

where $\delta \hat{X}_{2p+1}^+$ corresponds to the fluctuations of the amplitude quadrature of the mode $u_{2p+1}(x, z)$.

Experimentally, we measure the displacement for different split detector positions. This displacement is induced by a modulating device generating at $z = 0$ displacement and tilt modulations of amplitude d and p , respectively. A measurement at the modulation frequency, using a spectrum analyzer yields the modulation signal as well as the noise at this frequency. As usual in quantum optics, all equations are directly transposable into the frequency domain. Using Eq. 16, the variance measured by a spectrum analyzer at the precise modulation frequency is given by

$$V_{SD}(z) = \kappa N T \left(\frac{\hbar\omega}{2\epsilon_0 c T} \right)^2 \left[4 (N T) \frac{2}{\pi} \left(\frac{d}{w_0} \cos \phi_G(z) + \frac{p w_0}{2} \sin \phi_G(z) \right)^2 + \left\langle \left(\sum_{p=0}^{\infty} c_{2p+1} \delta \hat{X}_{2p+1}^{-(2p+1)\phi_G(z)} \right)^2 \right\rangle \right], \quad (20)$$

where κ is a constant depending only on the electronic gains of the spectrum analyzer, $T = 1/\text{RBW}$ is the integration time and $c_1 = \sqrt{2/\pi}$. The first and second bracketed term in Eq. 20 respectively correspond to modulation signal and noise. In the plane of the modulating device (i.e. for $z = 0$), the noise term can be written $\langle \delta \hat{X}_f^{+2} \rangle$ and corresponds to the noise of the amplitude quadrature of the flipped mode. The flipped mode is therefore the only mode contributing to the noise in this

particular plane. Note that this is not true all along the propagation axis. For a coherent incoming beam, this noise term defines the shot noise level, and is equal to 1. Note that using non classical resources for which $\langle \delta \hat{X}_f^{+2} \rangle < 1$ in the detection plane results in noise reduction. This case will be discussed in section V.

The Signal to Noise Ratio (SNR) for a coherent beam

is found from Eq. 20

$$SNR_{SD} = 4NT \frac{2}{\pi} \left(\frac{d}{w_0} \cos \phi_G(z) + \frac{pw_0}{2} \sin \phi_G(z) \right)^2.$$

As stated in section II, the SNR has a quadratic dependence in displacement d and momentum p .

B. Experiment

We have performed split detection measurements of displacement and tilt of a Gaussian beam, by moving the position of the detector along the propagation axis, as shown in Fig. 4. Displacement and tilt are produced

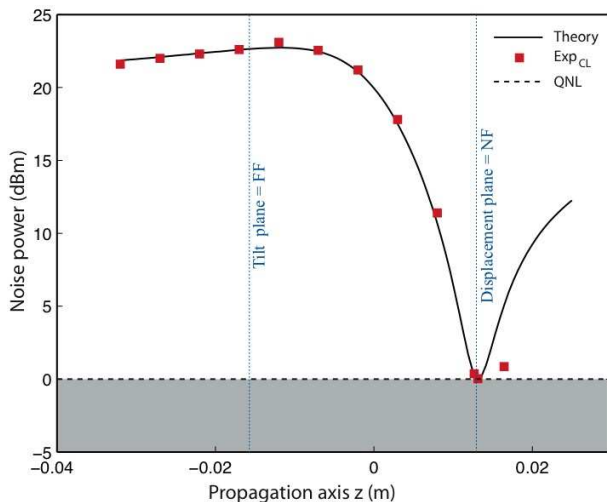


FIG. 4: Modulation measurement normalized to the shot noise along the propagation axis of a tilted and displaced beam, using a split detector. The modulation was produced by a PZT at 4 MHz, the near field image is located 1.6 cm after the waist plane which is taken as the reference position $z = 0$. The modulation detected in this plane (NF) corresponds to the displacement modulation and represents only 10 % of the overall modulation strength. The tilt information lies in its far field (FF).

by a piezoelectric element (PZT) modulated at 4 MHz. Each measurement along the propagation axis refers to a different quadrature of the modulation (i.e. a different mixture of displacement and tilt modulation). The results are normalized to the shot noise and taken with a 4.2 mW incident beam. From these measurements, we can infer the displacement and tilt relative amplitude modulation in the PZT plane where the waist is $106 \mu\text{m}$. The displacement signal, accessible in the near field of the PZT, is found to be much smaller than the tilt signal, and even so that it cannot clearly be distinguished from the shot noise. This unusual behavior of the piezoelectric material arises from the operation regime, where

the modulation is generated via an accidental mechanical resonance of the PZT. The theoretical curve has been plotted for a coherent illumination, using Eq. 20 for 10% displacement modulation, and 90% tilt modulation, ratio determined with the more accurate results presented in the section IV. There is a very good agreement with the experimental data. The last experimental point in Fig. 4 lies below the theoretical prediction, as the beam started to be apertured by the split detector, leading to a smaller measured modulation. Note that for technical reasons, our experimental setup is slightly different from the simplest setup presented on Fig. 3, where the reference plane coincides with the beam waist position. As shown on Fig. 4, the waist position lies at 1.6 cm for the near field of the PZT in our imaging setup.

We have shown in this section how to retrieve displacement and tilt information from a gaussian beam with a split detector, and have taken experimental results which will be used as a reference in the following sections.

IV. HOMODYNE DETECTION WITH A TEM_{10} LOCAL OSCILLATOR

We have proved theoretically in reference [1] that split detection was non optimal to retrieve displacement information, as it is only sensitive to the flipped mode instead of the TEM_{10} mode component of the input field. In order to extract all the displacement and tilt information with up to 100% efficiency, we propose a homodyne detector involving a TEM_{10} mode local oscillator, which selects the TEM_{10} mode component of the field.

In the homodyne detection scheme, two beams are mixed on a 50 : 50 beam-splitter. The first one is the signal beam containing the displacement and tilt modulations, whose field operator is given by Eq. 6. The second one is the local oscillator (LO), whose field operator is

$$\hat{\mathcal{E}}_{LO}^+(x) = i\sqrt{\frac{\hbar\omega}{2\epsilon_0 cT}} \left[\sqrt{N_{LO}} u_1(x) + \sum_{i=0}^{\infty} \delta \hat{a}_{LO_n} u_n(x) \right],$$

where N_{LO} denotes the number of photons per second in the beam, and ϕ_{LO} is the local oscillator phase. Since displacement and tilt modulations are very small and the local oscillator is much brighter than the signal beam (i.e. $N_{LO} \gg N$), the usual calculation of the intensity difference between the two homodyne detectors at the modulation frequency gives

$$\hat{I}_- = \frac{\hbar\omega}{2\epsilon_0 cT} \left[2\sqrt{NN_{LO}} \left(\frac{d}{w_0} \cos \phi_{LO} + \frac{w_0 p}{2} \sin \phi_{LO} \right) + \sqrt{N_{LO}} \delta \hat{X}_1^{\phi_{LO}} \right], \quad (21)$$

and similarly to Eq. 20, its variance at the displacement and tilt modulation frequency is therefore

$$V_{HD}(\phi_{LO}) = \kappa N_{LO} T \left(\frac{\hbar\omega}{2\epsilon_0 c T} \right)^2 \left[4NT \left(\cos(\phi_{LO}) \frac{d}{w_0} + \sin(\phi_{LO}) \frac{pw_0}{2} \right)^2 + \langle \delta \hat{X}_1^{\phi_{LO}^2} \rangle \right], \quad (22)$$

where the constant κ is identical to the split detection part as long as the spectrum analyzer settings have not been changed. The first bracketed term corresponds to the modulation signal. The second one refers to the noise of the TEM₁₀ component of the detected field, and its variation with the local oscillator phase ϕ_{LO} is given by $\langle \delta \hat{X}_1^{\phi_{LO}^2} \rangle = \langle \delta \hat{X}_1^{+2} \rangle \cos^2 \phi_{LO} + \langle \delta \hat{X}_1^{-2} \rangle \sin^2 \phi_{LO}$, where $\langle \delta \hat{X}_1^{+2} \rangle$ and $\langle \delta \hat{X}_1^{-2} \rangle$ are the noise of the amplitude and phase quadrature of the TEM₁₀ mode, respectively. Scanning the local oscillator phase allows to measure all the quadratures of the displacement and tilt modulation. We have omitted the Gouy phase shift in the previous expression, as it can be incorporated as a constant term in the local oscillator phase. This phase is still defined so that $\phi_{LO} = 0$ corresponds to a displacement measurement in the PZT plane.

Only the TEM₁₀ mode of the incoming beam contributes to the noise, as it matches the local oscillator transverse shape. All the other modes contributions cancel out since they are orthogonal to the local oscillator. The TEM₁₀ mode is thus the noise mode of the homodyne detection, and precisely matches the information to be extracted. We can show, using a Cramer Rao bound estimation, that the TEM₁₀ homodyne detection is an optimal displacement and tilt detection, as no other device can possibly perform such measurements with a better SNR [12].

For a coherent incoming TEM₁₀ mode, the previous noise term defines the shot noise level, and is equal to 1. Using squeezed light in the TEM₁₀ mode component of the incoming beam would result in noise reduction, and will be discussed in the section V.

The SNR for a coherent incoming beam can be derived from Eq. 22 in the homodyne detection case

$$SNR_{HD} = 4NT \left(\frac{d}{w_0} \cos \phi_{LO} + \frac{pw_0}{2} \sin \phi_{LO} \right)^2. \quad (23)$$

Comparing the split and homodyne detections schemes yields certain similarities between Eq.(20) and (22). First, a variation of the local oscillator phase ϕ_{LO} in the homodyne scheme is equivalent to a propagation along the z axis inducing a Gouy phase shift ϕ_G in the split detection case. Secondly, an additional $2/\pi$ geometry factor in the split detection case arises from the imperfect overlap between the flipped mode and the TEM₁₀ mode, as discussed in reference [1]. The comparison between the two SNRs in the coherent case yields a theoretical efficiency ratio given by

$$R_{th} = \frac{SNR_{SD}}{SNR_{HD}} = \frac{2}{\pi} \frac{N_{SD}}{N_{HD}}, \quad (24)$$

where N_{SD} and N_{HD} refer to the number of photon per second in the displaced and tilted beam, for the split detection and the homodyne detection case, respectively. For identical signal beams powers, this means that the split detection is only $2/\pi = 64\%$ efficient compared to the homodyne detection. Using the homodyne detection thus corresponds to an improvement of $(100 - 64)/64 = 56\%$.

Eventually, the intensity factor before the bracketed term in Eq. 22 and Eq. 20 can be much bigger in the homodyne detection case, as it corresponds to the local oscillator intensity instead of the input beam intensity in the split detection case. It is thus easier to have more electronic noise clearance in the homodyne case.

In this section, we have shown - still theoretically - how to retrieve displacement and tilt using a homodyne detector with a TEM₁₀ local oscillator. Moreover, we have proved a 56% theoretical improvement of this scheme compared to the split detection.

V. DISPLACEMENT AND TILT MEASUREMENTS BEYOND THE QUANTUM NOISE LIMIT

When the information to be retrieved is below - or of the order of - the quantum noise, non classical resources (i.e. squeezed laser beams) can help extracting the information. For each type of detection (i.e homodyne- and split detection), the only transverse mode component within the incident field which contributes to the noise has been identified in the previous sections. The noise modes of the split and homodyne detection are the flipped mode and the TEM₁₀ mode, respectively. Since displacement and tilt of a TEM₀₀ beam lies in the TEM₁₀ component of the beam, noise mode and information encoded are matched for the homodyne detection only, accounting for the non optimal split detection.

Sub shot noise measurements with both schemes can be performed using the setups shown in Fig. 5, by filling the noise mode of the input beam with squeezed light. A mode combiner has to be used to merge the signal beam - in our case a bright TEM₀₀ beam - with the noise mode of detection, filled with squeezed vacuum. Note that it has to be a vacuum mode, or a very dim field not to contribute to the signal, but only to reduce the quantum noise properties. The combination of beams cannot be done with a sheer beam-splitter as the squeezing is not robust to losses. Instead, we used a special Mach-Zehnder interferometer with an additional mirror in one arm, see (Fig. 5). This mirror has no effect on even transverse

profiles, but induces an additional π phase shift to odd transverse profiles. Therefore, thanks to this asymmetry, orthogonal even and odd modes, which are incident on the two input ports of the Mach-Zehnder, interfere constructively on the same output port without experiencing any losses. The integrality of the bright beam and the squeezing of the squeezed vacuum mode - a) flipped mode or b) TEM_{10} mode - are thus preserved at the output of the interferometer. Note that other devices can be used [9, 14, 15].

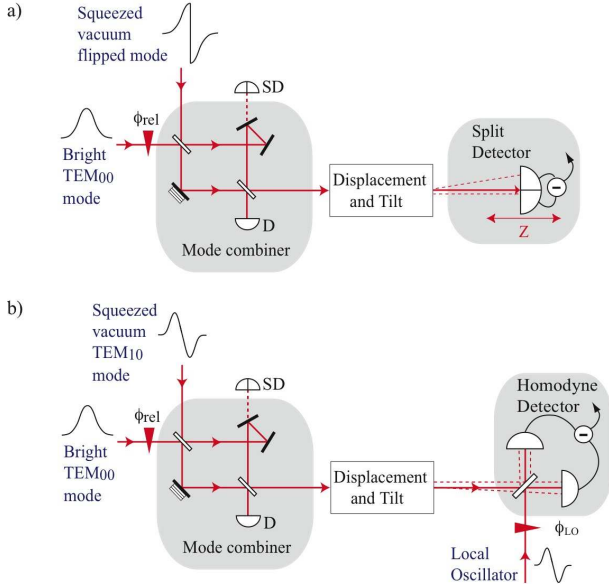


FIG. 5: Schematic of displacement and tilt modulation measurement beyond the quantum noise limit. a) With a split detector and b) with a homodyne detector. Prior to the modulation generated via a PZT at a few MHz, a bright TEM_{00} beam is combined without losses with a squeezed vacuum noise mode. This was done with a special Mach-Zehnder which has an additional mirror in one arm. A mirror leakage is used to lock the relative phase between both input modes. All different combinations of displacement and tilt modulations are accessible when a) the position of the split detector along the propagation axis z is varied, and b) when the local oscillator phase ϕ_{LO} is scanned.

In order to make a direct comparison of the performances of the split detection and the homodyne detection, we have built the experimental setup sketched in Fig. 6, where both schemes are tested in the same operating conditions. In addition to a simple comparison involving only classical resources, we designed the experience in order to allow measurements beyond the QNL. At this stage, we were unable to produce directly a squeezed TEM_{10} mode, we have therefore chosen to generate a squeezed flipped mode, which also corresponds to a squeezed TEM_{10} mode having experienced 36 % losses. Indeed, the amount of squeezing in the amplitude quadrature of the TEM_{10} component of the flipped

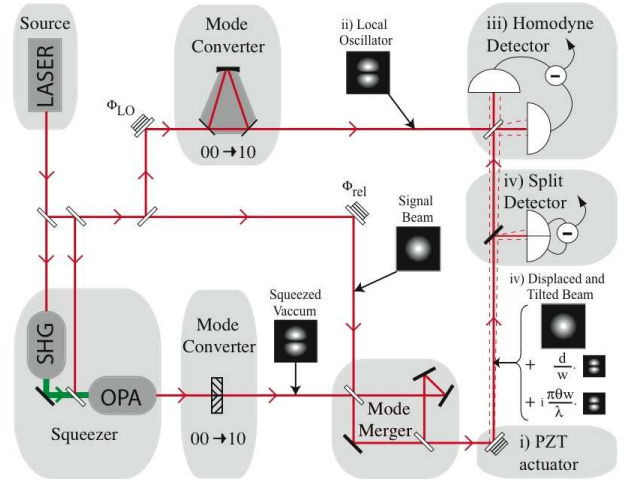


FIG. 6: Experimental scheme to measure displacement and tilt with a split detector and a homodyne detector with the same operating conditions.

mode can be deduced from

$$\langle \delta \hat{X}_1^{+2} \rangle = \frac{2}{\pi} \langle \delta \hat{X}_f^{+2} \rangle + \left(1 - \frac{2}{\pi} \right), \quad (25)$$

as all the modes except the flipped mode are filled with coherent light. If the flipped mode is a classical coherent beam, $\langle \delta \hat{X}_f^{+2} \rangle = 1$, which also implies that the TEM_{10} component is coherent $\langle \delta \hat{X}_1^{+2} \rangle = 1$, as expected. In the end, if we start with 3.6 dB of squeezing in the amplitude quadrature of the flipped mode as discussed below, we get 2 dB of squeezing in the TEM_{10} mode, which is exactly what can be measured experimentally by using the homodyne detection with a TEM_{10} local oscillator.

We used the following experimental procedure. First we generated a 3.6 dB squeezed TEM_{00} mode from a monolithic optical parametric amplifier (OPA) pumped by a frequency doubled YAG laser delivering 600 mW at 1064 nm, and seeded by a TEM_{00} mode. This very low power (nW) squeezed beam then experiences a mode conversion into the flipped mode thanks to a special wave-plate made of two half wave-plates whose optical axis have been rotated 90° relative to each other [13]. A beam incident on such an optical element yields a π phase shift on half of its transverse profile.

Thanks to the special Mach-Zehnder interferometer formerly presented, we combine this beam with a bright TEM_{00} beam, therefore preserving their potential non classical properties. To achieve this experimentally, we first mode matched both input beams of the interferometer without the special wave-plate, reaching 99.5 % visibility on the first beam-splitter of the interferometer. The squeezed beam, although very dim, is still bright enough to be mode matched with the other bright TEM_{00} beam. The interferometer is then aligned on the OPA beam without the wave-plate with 98 % visibility and

then the wave-plate is slid in the center of the beam to a maximum visibility of 97.8 %. Note that we purposely introduced a leakage in one of the mirrors to lock the relative phase ϕ_{rel} between the two input modes with a split detector (SD), as drawn in Fig. 5). In the end, the global mode combiner efficiency is still higher than 97%.

The multi-mode squeezed beam hereby generated is then displaced and tilted with a PZT, as presented in section III, and the information is detected with either one of the split or homodyne detection schemes. We only presented classical measurements for the split detection case in Fig. 4, as such measurements have already been demonstrated. Moreover, the measurements have to be done precisely in the near field of the mode converting wave-plate - which is also the near field of the PZT - as the flipped mode is not stable in propagation, and squeezing degrades very quickly along the z direction.

The TEM_{10} local oscillator is produced with a misaligned ring cavity locked to resonance on the TEM_{10} mode represented in Fig. 6. The cavity has been designed such that it delivers a pure transverse output mode (i.e. high order modes are not simultaneously resonant in the cavity). We mode matched this local oscillator beam to the signal beam by previously locking the ring cavity to the TEM_{00} mode resonance, reaching a visibility of 98.9 % with the TEM_{00} input mode.

The experimental results, obtained with the spectrum analyzer in zero-span mode at 4 MHz, are presented in Fig. 7(a) and Fig. 7(b), when the TEM_{10} local oscillator phase is scanned and locked for displacement ($\phi_{LO} = 0$) and tilt ($\phi_{LO} = \pi/2$) measurement. Without the use of squeezed light, the displacement modulation cannot clearly be resolved, as in the split detection case. Improvement of the SNR for displacement measurement beyond the quantum noise limit is achieved when the squeezed quadrature of the TEM_{10} mode is in phase with the displacement measurement quadrature (i.e. in phase with the incoming TEM_{00} mode). Since we are dealing with conjugate variables, improving the displacement measurement degrades the tilt measurement of the same beam, as required by the anti-squeezing of the other quadrature. The displacement measurement is improved by the 2 dB of squeezing, whereas the tilt measurement is degraded by the 8 dB of anti-squeezing. Theoretical curves calculated with 2 dB of noise reduction and 8 dB of anti-squeezing, and 90 % of tilt modulation and 10 % of displacement modulation - continuous curves in Fig. 7(a) - are in very good agreement with experimental data. In our experiment, we have a TEM_{00} waist size of $w_0 = 106 \mu\text{m}$ in the PZT plane, a power of $170 \mu\text{W}$, $RBW = 100 \text{ kHz}$ and $VBW = 100 \text{ Hz}$, corresponding to a QNL of $d_{QNL} = 0.6 \text{ nm}$. The measured displacement lies 0.5 dB above the squeezed noise floor, yielding a displacement modulation 0.08 times larger than the QNL. As the modulation has a square dependence on the displacement d , we get $d_{exp} = \sqrt{0.08}d_{QNL} = 0.15 \text{ nm}$. This would correspond to a trace 0.3 dB above the QNL, and cannot therefore be clearly resolved without squeezed

light. The ratio between displacement and tilt modulations can be inferred from the theoretical fit in figure 7, giving a measured tilt of $0.13 \mu\text{rad}$.

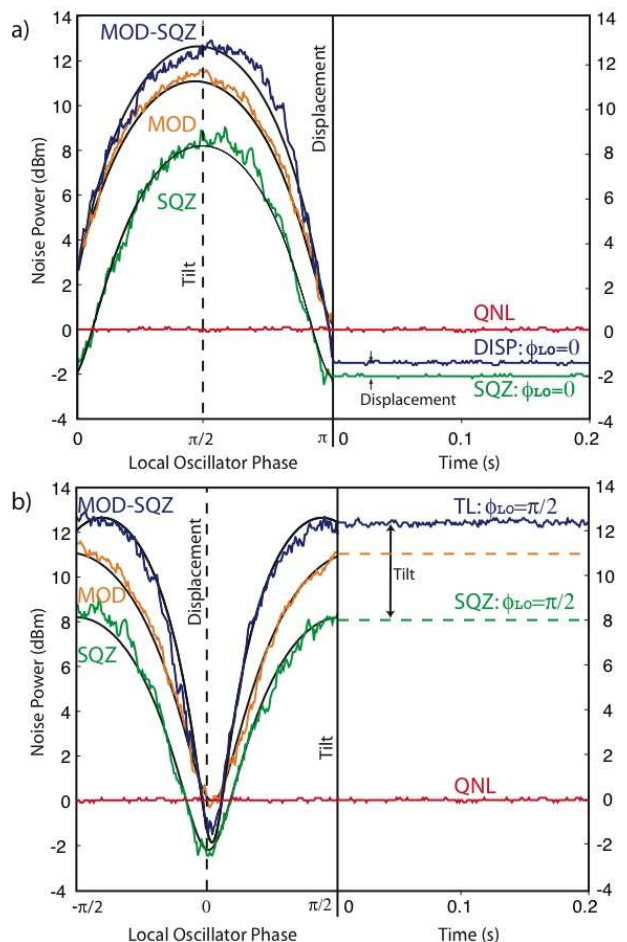


FIG. 7: Demonstration of sub-shot noise measurements of (a) displacement and (b) tilt modulations using spatial homodyne detector. The figures show an example with 90% of tilt, and 10% of displacement modulations. Left hand side of the figures shows the scanning of the local oscillator phase ϕ_{LO} that continuously access the pure displacement (at $\phi_{LO} = 0$ and π) to pure tilt (at $\phi_{LO} = \pi/2$ and $3\pi/2$) information of the beam. QNL: quantum noise limit. SQZ: quadrature noise of squeezed light with 2 dB of squeezing and 8 dB of anti-squeezing on the TEM_{10} mode, but without any modulation signal. MOD: measured modulation with coherent light. MOD-SQZ: measured modulation with squeezed light. Right hand side of the figures shows the corresponding locked local oscillator phase to the (a) displacement or (b) tilt measurement. SQZ: at $\phi_{LO} = 0$ the squeezed noise level is 2 dB below the shot noise and at $\phi_{LO} = \pi/2$ there is 8 dB of anti-squeezing noise. DISP: MOD-SQZ curve locked to $\phi_{LO} = 0$ for displacement measurement. TL: MOD-SQZ curve locked to $\phi_{LO} = \pi/2$ for tilt measurement. Displacement measurement is improved by the 2 dB of squeezing, while the tilt measurement is degraded by the 8 dB of anti-squeezing.

We have in this section demonstrated measurements of a pair of quantum conjugate variables - displacement

and tilt - with a homodyne detector involving a TEM₁₀ mode local oscillator, and performed sub shot noise displacement measurements.

VI. COMPARISON

We can compare the results obtained with the split detection and the homodyne detection by using Eq. 24, where we need to take into account the input beam power discrepancy between both experiments. It was necessary to take data with more power in the modulated beam for the split detection in order to have a sufficient noise clearance between the electronic noise and the shot noise. As for the homodyne detection, the local oscillator can be intense, and the noise clearance above the electronic noise can reach around 10 dB. This is interesting when the signal to be retrieved is very small, but can on the other hand also be a limitation for large signals. The experimental efficiency ratio can be evaluated with the following expression

$$R_{exp} = \frac{P_{HD}}{P_{SD}} \left[\frac{Mod_{SD}}{Mod_{HD}} \right] = 0.64, \quad (26)$$

where $P_{HD} = 170\mu\text{W}$ and $P_{SD} = 4.2\text{ mW}$ refer to the signal beam powers, in the case of the homodyne and split detection, respectively. Mod_{SD} and Mod_{HD} are the maximum detected modulation in each detection scheme, relative to the shot noise. The two experimental curves read $Mod_{SD} = 23\text{ dB}$ and $Mod_{HD} = 11.3\text{ dB}$, which yields $R_{exp} = 0.64$, and which precisely correspond to the theoretical expectation. The uncertainty, mainly given by the one on the maximum modulation values, can be evaluated to 5%. We therefore report an efficiency improvement of 56% in perfect agreement with the theoretical value calculated in reference [1].

Although the split detection is easier to set-up experimentally, the homodyne scheme is more efficient and allows measurements of both the displacement and tilt of the beam without moving the detector position, giving a complete information on the interaction between the sample and the beam. We show that one can choose which measurement to improve (tilt or displacement) using squeezed light by simply varying the phase of the squeezed beam. There are additional limitations to the use of a split detector due to its gap and to its finite size, which are imposing constraints when the variation of the modulation on the propagation axis is measured. The accessible range to a good detection on the z axis is small, as the beam can neither be too small (because of the gap), nor too large (because of the finite size of the detector). Moreover, in order to perform

measurements beyond the QNL, one has to carefully image the squeezed flipped mode onto the sample, and also onto the detector, as the flipped mode is not stable in propagation. This imaging difficulty is not present in the homodyne case. Nevertheless, it is replaced with the constraint of a careful mode matching of the incoming beams. Moreover, homodyne detection cannot be used for the positioning of an incoherent light beam, as it is relying on the interferences between incoming beam and local oscillator.

Conclusion

We have demonstrated a homodyne detection scheme involving a TEM₁₀ mode local oscillator in order to measure the displacement and tilt of a Gaussian beam. We report a detection efficiency improvement of 56% relative to the split detection, in perfect agreement with the theoretical value. Our detection setup is very simple and could thus easily replace split and quadrant detectors in many applications, particularly when tilt and displacement are needed at the same time. Moreover, further developments using non classical are possible, as we have presented measurements beyond the QNL with these devices. Note that we are now able to generate the squeezed TEM₁₀ mode directly, without the use of a wave-plate, with a misaligned Optical Parametric Amplifier [16], allowing a simplification of the setup.

Quantum measurements in the transverse plane such as the ones presented in this paper potentially open the way to parallel quantum information processing. Indeed, instead of using amplitude and phase quadratures or Stokes operators, conjugated quantum operators are now available in the transverse plane. The generation of spatial-entanglement between position and momentum of two laser beams will be considered as a first step towards this goal. Note that spatial entanglement has already been demonstrated with orbital angular momentum in the single photon regime [17, 18]. Other types of experiments that could follow are dense coding and teleportation of spatial information and spatial holography.

VII. ACKNOWLEDGEMENTS

We like to thank Magnus Hsu, Warwick Bowen and Nicolai Grosse for helpful discussions. This work was supported with funding from the Australian Research Council Centre of Excellence program. P.K.Lam and H-A.Bachor enjoy funding as ARC fellows.

[1] M. T. L. Hsu, V. Delaubert, P. K. Lam and W. P. Bowen, J. Opt. B : Qu. Semiclass. Opt. **6**, 495 (2004).

[2] E. Morrison, B. J. Meers, D. I. Robertson and H. Ward, Appl. Opt. **33**, 5041 and 5049 (1994)

- [3] J. H. Chow, G. de Vine, M. B. Gray, and D. E. McClelland, *Opt. Let.* **20**, 2339 (2004)
- [4] see also references in [1]
- [5] S. M. Barnett and R. Zambrini, *J. Mod. Opt.* **53**, 613 (2006).
- [6] M. T. L. Hsu, W. P. Bowen, N. Treps and P. K. Lam, *Phys. Rev. A* **72**, 013802 (2005).
- [7] A. E. Siegman, *Lasers*, Mill Valley, CA: University Science (1986)
- [8] C. Fabre, J. B. Fouet, et A. Maître, *Opt. Let.* **25**, 76 (2000).
- [9] N. Treps, N. Grosse, W. P. Bowen, M. T. L. Hsu, A. Maître, C. Fabre, H-A. Bachor, P. K. Lam, *J. Opt. B* **6**, S664 (2004).
- [10] N. Treps, V. Delaubert, A. Maître, J. M. Courty and C. Fabre, *Phys. Rev. A* **71**, 013820 (2005).
- [11] V. Delaubert, N. Treps, C. C. Harb, P. K. Lam and H-A. Bachor, *Opt. Let.*, **31**, 1537 (2006).
- [12] V. Delaubert, N. Treps, P. Réfrégier, H-A. Bachor and C. Fabre, to be submitted.
- [13] V. Delaubert, D. A. Shaddock, P. K. Lam, B. C. Buchler, H-A. Bachor and D. E. McClelland, *J. Opt. A* **4**, 393 (2002).
- [14] N. Treps, U. Andersen, B. Buchler, P.K. Lam, A. Maître, H. Bachor, C. Fabre, *Phys. Rev. Let.* **88** 203601 (2002)
- [15] N. Treps, N. Grosse, W. P. Bowen, C. Fabre, H.-A. Bachor and P. K. Lam, *Science*, **301**, 940 (2003).
- [16] M. Lassen, V. Delaubert, C. C. Harb, P. K. Lam, N. Treps and H-A Bachor, *J. Eur. Opt. Soc.*, **1**, 06003 (2006).
- [17] S. S. R. Oemrawsingh, X. Ma, D. Voigt, A. Aiello, E. R. Eliel, G. W. 't Hooft, and J. P. Woerdman *Phys. Rev. Lett.* **95**, 240501 (2005).
- [18] S. S. R. Oemrawsingh, J. A. de Jong, X. Ma, A. Aiello, E. R. Eliel, G. W. 't Hooft, and J. P. Woerdman *Phys. Rev. A* **73**, 032339 (2006).