



HAL
open science

Ozone pollution from future ship traffic in the Arctic northern passages

Claire Granier, Ulrike Niemeier, J.H. Jungclaus, Louisa Emmons, Peter Hess, Jean-François Lamarque, Stacy Walters, Guy P. Brasseur

► **To cite this version:**

Claire Granier, Ulrike Niemeier, J.H. Jungclaus, Louisa Emmons, Peter Hess, et al.. Ozone pollution from future ship traffic in the Arctic northern passages. *Geophysical Research Letters*, 2006, 33, pp.L13807. 10.1029/2006GL026180 . hal-00084789

HAL Id: hal-00084789

<https://hal.science/hal-00084789>

Submitted on 6 Aug 2020

HAL is a multi-disciplinary open access archive for the deposit and dissemination of scientific research documents, whether they are published or not. The documents may come from teaching and research institutions in France or abroad, or from public or private research centers.

L'archive ouverte pluridisciplinaire **HAL**, est destinée au dépôt et à la diffusion de documents scientifiques de niveau recherche, publiés ou non, émanant des établissements d'enseignement et de recherche français ou étrangers, des laboratoires publics ou privés.

Ozone pollution from future ship traffic in the Arctic northern passages

Claire Granier,^{1,2,3} Ulrike Niemeier,⁴ Johann H. Jungclaus,⁴ Louisa Emmons,⁵ Peter Hess,⁵ Jean-François Lamarque,⁵ Stacy Walters,⁵ and Guy P. Brasseur^{4,6}

Received 6 March 2006; revised 27 April 2006; accepted 30 May 2006; published 8 July 2006.

[1] With sea ice expected to recede in the Arctic during the 21st century as a result of projected climate warming, global shipping patterns will change considerably in the decades ahead. The opening of viable shipping routes through the Northern passages will generate new environmental problems including the degradation of air quality in the Arctic. The release of considerable amounts of carbon monoxide, nitric oxide and other chemical substances by the ship's combustion engines will enhance the level of atmospheric photooxidants and other secondary pollutants in this region. Here we show that, during the summer months, surface ozone concentrations in the Arctic could be enhanced by a factor of 2–3 in the decades ahead as a consequence of ship operations through the northern passages. Projected ozone concentrations of 40–60 ppbv from July to September are comparable to summertime values currently observed in many industrialized regions in the Northern Hemisphere. **Citation:** Granier, C., U. Niemeier, J. H. Jungclaus, L. Emmons, P. G. Hess, J.-F. Lamarque, S. Walters, and G. P. Brasseur (2006), Ozone pollution from future ship traffic in the Arctic northern passages, *Geophys. Res. Lett.*, 33, L13807, doi:10.1029/2006GL026180.

1. Introduction

[2] For a long time, the Arctic area has been a pristine area. Since the 1950s, however, reddish haze bands have been observed in this region, mostly in late winter [Mitchell, 1956]. In the 1970s, it was recognized that this Arctic haze was the result of air pollution produced by human activities at mid-latitudes [Rahn and Mc Caffrey, 1979].

[3] The chemical composition of the Arctic atmosphere is expected to change further in the future as a result of human activities in the industrialized and urbanized regions of the Northern hemisphere. However, in the case of surface ozone, models suggest that, in the Arctic region, the concentration increase expected from these distant perturbations should be modest in the coming decades (less than 3 ppbv for the 1990–2030 period according to Dentener et

al. [2005]; less than 5 ppbv for the 2000–2030 period according to Stevenson et al. [2006]; and less than 8 ppbv for the 2000–2100 period according to Brasseur et al. [2006]).

[4] Emissions of chemical compounds from ships have become a growing issue over the past few years. Surface emissions resulting from international shipping operations are substantial [Eyring et al., 2005a and references therein], and their effects on the atmospheric composition at the global scale could be significant [Lawrence and Crutzen, 1999]. For example, large amounts of nitrogen oxides have recently been detected by satellite along shipping routes [Beirle et al., 2004], demonstrating the potential impact of shipping activities on the distribution of atmospheric species.

[5] Here, we quantify the impact of the near-future opening of new shipping routes in the Arctic. As a result of human-driven climate warming, a gradual melting of the Arctic ice cap is predicted to occur in the decades ahead. This will likely result in the opening of the Northeast Passage along the northern coastline of Siberia, as well as of the Northwest Passage in the Canadian Archipelago and along the northern Alaskan coastline. Satellite observations have shown a persistent reduction in summertime Arctic sea ice over the last 4 years [Lindsay and Zhang, 2005; Stroeve et al., 2005], which may be the onset of a long-term decline. Although summertime Arctic shipping may require special equipment, assistance, and probably protection against icebergs, the opening of the northern passages could become a viable economic alternative to southern routes. For example, the distance traveled from Europe to eastern Asia along the new polar routes could be more than 7000 km shorter than along the southern routes via the Panama or the Suez Canals.

2. Models and Ships Surface Emissions

[6] The future evolution of the global climate and specifically of the Arctic ice sheet in response to changing atmospheric greenhouse gas and aerosol concentrations was calculated using the ECHAM5/MPI-OM coupled atmosphere-ocean general circulation model. The model does not require any flux adjustments to maintain a stable climate and has been tested for several applications under present-day conditions [Jungclaus et al., 2005; Marsland et al., 2003] (A detailed description of this model is provided in the auxiliary material¹). The simulations were carried out for the period 1860–2100 in the framework of the fourth

¹Service d'Aéronomie/IPSL, Université Pierre et Marie Curie, Paris, France.

²Also at NOAA ESRL/CIRES Chemical Sciences Division, Boulder, Colorado, USA.

³Formerly at Max Planck Institute for Meteorology, Hamburg, Germany.

⁴Max Planck Institute for Meteorology, Hamburg, Germany.

⁵National Center for Atmospheric Research, Boulder, Colorado, USA.

⁶Now at National Center for Atmospheric Research, Boulder, Colorado, USA.

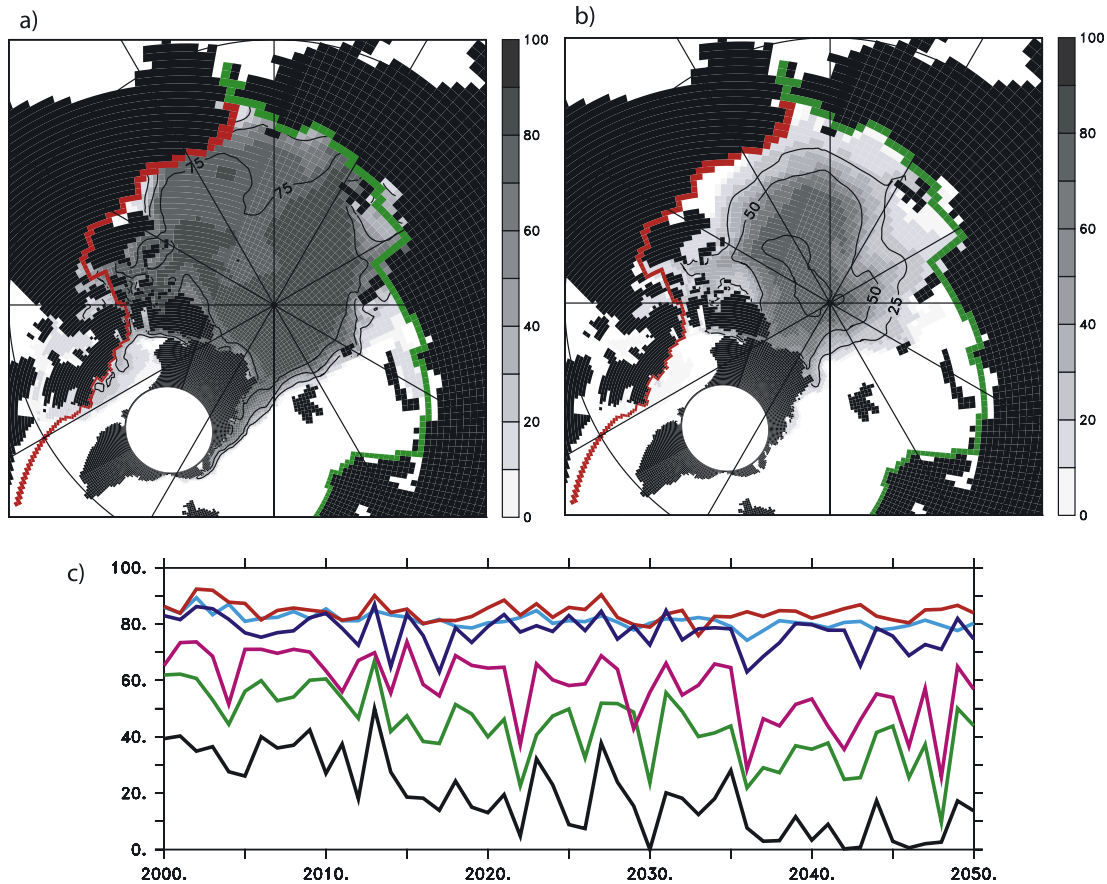


Figure 1. Summer (June to October) mean sea ice coverage (in %) derived by the ocean atmosphere climate model for the periods (a) 2001–2005, and (b) 2050–2060. The model representations of the Northeast (green) and Northwest (red) passages are also indicated. (c) Temporal evolution of the percentage of sea ice cover in the Northwest Passage in September (black), July (green), November (purple), May (dark blue), January (light blue), and March (red).

Assessment Report of the Intergovernmental Panel on Climate Change (IPCC) planned for the year 2007. The model was initialized from the end of a pre-industrial control experiment and then forced with observed greenhouse gas and aerosol concentrations for the period 1860–2000. Thereafter greenhouse gas and aerosol concentrations followed the so-called SRES A1B scenario [Intergovernmental Panel on Climate Change, 2000], and providing a moderate climate response. The model suggests that a significant reduction in the fraction of ice cover is to be expected in the decades ahead in the northern passages from May to October, which would open shipping routes in the Arctic during the summer months (Figure 1). The model results are in agreement with the results presented in the Arctic Climate Impact Assessment [Hassol, 2004].

[7] In almost all cases, ship propulsion is achieved through diesel engines. The emissions associated with these engines, primarily as carbon monoxide (CO) and nitrogen oxides ($\text{NO}_x = \text{NO} + \text{NO}_2$ assumed to be emitted as NO) have not yet been efficiently regulated even though the International Maritime Organization (IMO, available at <http://www.imo.org>) through the International Convention for the Prevention of Marine Pollution from Ships (MARPOL) calls for a 30% reduction in the NO_x emissions from operating vessels [Eyring et al., 2005b]. Over the past

decades, the emissions of ships have increased dramatically [Lawrence and Crutzen, 1999; Eyring et al., 2005a]. Future changes, however, are difficult to predict because they depend on future economic growth, engine technology, and environmental regulations.

[8] Eyring et al. [2005b] provide different scenarios for future emissions by ships at the global scale. In their DS4 scenario, which considers a business-as-usual case, they derive for the global NO_x emission by ships an increase from 6.5 TgN/yr in year 2000 to 11.8 TgN/yr in 2050.

[9] In the present study, which reflects a situation around 2050, we have considered two cases: we assumed that, among this 5.3 Tg N/yr increase in emissions from ships, 25% or 12.5% (i.e., 1.3 TgN/yr or 0.65 Tg N/yr) would be resulting from Arctic ships. The emissions from the ships have been distributed uniformly along the ship tracks in the Arctic passages shown in Figure 1b. Adopting the same proportion in the case of carbon monoxide, the CO emission added along the Arctic routes is 0.14 Tg and 0.07 CO/yr. The MOZART-4 (Model for Ozone and Related chemical Tracers, available from <http://gctm.acd.ucar.edu/mozart>) global chemistry-transport model (Emmons et al., in preparation, 2006, and details in the auxiliary material) is used for the simulations of the distribution of tropospheric chemical species, such as CO, NO_x and ozone. The emis-

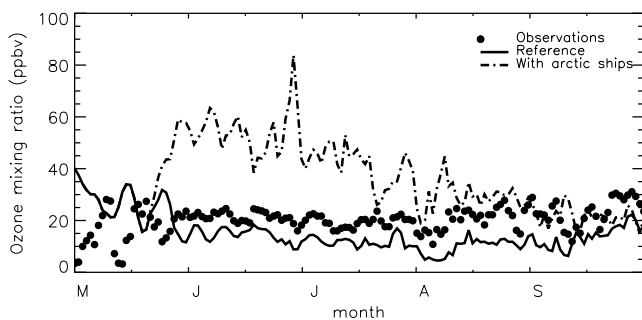


Figure 2. Surface ozone observed at the station of Barrow (71.2 N; 156.4 W) in Alaska (dots) from May to September 1997 [from Oltmans *et al.*, 1998]. The background ozone mixing ratios calculated for current chemical emissions and for analyzed meteorological fields [Oltmans *et al.*, 1998] during the same period, are shown by the full line. Ozone mixing ratios derived when Arctic ships emissions are taken into account, are shown by the dashed line.

sions resulting for ships in the Arctic are applied during the June to October period in the new corridors, with all other emissions remaining unchanged.

[10] MOZART has been driven with offline meteorology provided by the European Center for Medium-Range Weather Forecasts (ECMWF, available at <http://www.ecmwf.int/products/forecasts>). A reference run was performed using meteorological fields from 3-hour archives from ECMWF for the year 1997. Surface emissions for this reference run were taken from the POET database (Granier *et al.*, electronic data, 2005, available at <http://www.aero.jussieu.fr/projet/ACCENT/POET.php>). The model derives background trace gas distributions that are generally in good agreement with observations made in the Arctic region [Emmons *et al.*, 2003].

[11] In order to isolate the contribution of Arctic ships on the chemical composition of the region, the simulations performed for the perturbed conditions used the same meteorological fields as in the base case. They also used the same surface emissions except in the case of NO_x and CO, where the emissions were perturbed as discussed above. Previously reported model simulations [Brosseur *et al.*, 2006] have shown that the adoption of meteorological fields simulated by the model for year 2050 does not lead to any significant changes in the calculated high-latitude chemical fields.

[12] The location of the surface emissions from arctic ships, corresponding to an emission of 1.3 Tg N/yr and 0.14 Tg CO/yr, were determined by interpolating the results of the ECHAM5-MPI-OM model (Figure 1b) on the MOZART grid, that is, approximately 2.8 degrees in both latitude and longitude (T42 resolution). In order to assess the degree of linearity of the response of the photochemical system, a second case in which the arctic ships emissions are divided by a factor 2 (i.e., 0.65 Tg N/yr and 0.07 Tg CO/yr), is also considered.

3. Model Results

[13] Pollutants such as nitrogen oxides, carbon monoxide and unburned hydrocarbons released by ships contribute to

the formation of ozone, a secondary pollutant that can have harmful effects on vegetation and human health. The formation of ozone, when sunlight conditions prevail, results from the photolysis of nitrogen oxides (NO_2), which is itself produced through the conversion of nitric oxide (NO) by peroxy radicals (such as HO_2). These radicals are generated by the oxidation of carbon monoxide (CO) and hydrocarbons primarily by the hydroxyl (OH) radical. In most regions of the troposphere, including the remote Arctic areas where background concentrations of pollutants are particularly low, the formation rate of ozone is limited by the amount of nitrogen oxides that are present in the atmosphere. Thus, in the Northern part of Canada and Siberia, where the background NO_x abundance is very low, the ozone mixing ratio is typically 20–30 ppbv from May to October (see, for example, observations performed at Barrow, Alaska (71N) reported in Figure 2), to be contrasted with observations of typically 20–60 ppbv in the industrialized regions of Europe and North America [Logan, 1999].

[14] As shown by Figure 3a, the change in the monthly average mixing ratio of NO_x resulting from ship emissions in the summer Arctic follows rather closely the emissions patterns due to the short residence time of reactive nitrogen. An increase of up to 10 ppbv is calculated along the shipping routes.

[15] In the absence of ship emissions in the Arctic, the presence of ozone at high latitudes results primarily from the long-range transport of this molecule. The monthly mean ozone mixing ratio is of the order of only 10–15 ppbv during summertime (Figure 3b), with values reaching 25–30 ppbv along the Scandinavian coast line and near Greenland. The dramatic ozone increase in the Arctic (Figure 3c) calculated in response to ship operation is explained by the fact that ship emissions provide the only local source of ozone precursors in this region. In addition, because the ozone production is a highly non-linear process, the number of ozone molecules produced per nitric oxide molecule emitted is higher when the background NO_x level is low [Liu *et al.*, 1987]. In the Arctic, the photochemical lifetime of ozone is rather long, and its deposition velocity on ice and water is small. Therefore, the calculated concentration increase in the summer months is distributed over the entire Arctic region. Along the northern coast of Alaska, for example, the monthly average change in the ozone concentration reaches 45 ppbv. Significant increases are also calculated in Scandinavia (up to 5 ppbv or 20%), and in Newfoundland (5 ppbv or 17%).

[16] Surface ozone observations in the Arctic at the Barrow station (71.2°N; 156.4°W) have been performed over several years [Oltmans *et al.*, 1998] (data available at <http://www.cmdl.noaa.gov/ozwv>). At this location, the ozone concentration increases substantially during summertime in response to ship traffic (Figure 2). This station is located in the area, which, according to our calculations, will be strongly affected by Arctic shipping. The evolution of the background ozone concentration calculated with analyzed meteorology for year 1997 follows the observations for the same year [Oltmans *et al.*, 1998], even if the simulated values are slightly lower than the measurements. When Arctic shipping is taken into account, the daily-averaged concentrations are considerably higher in July

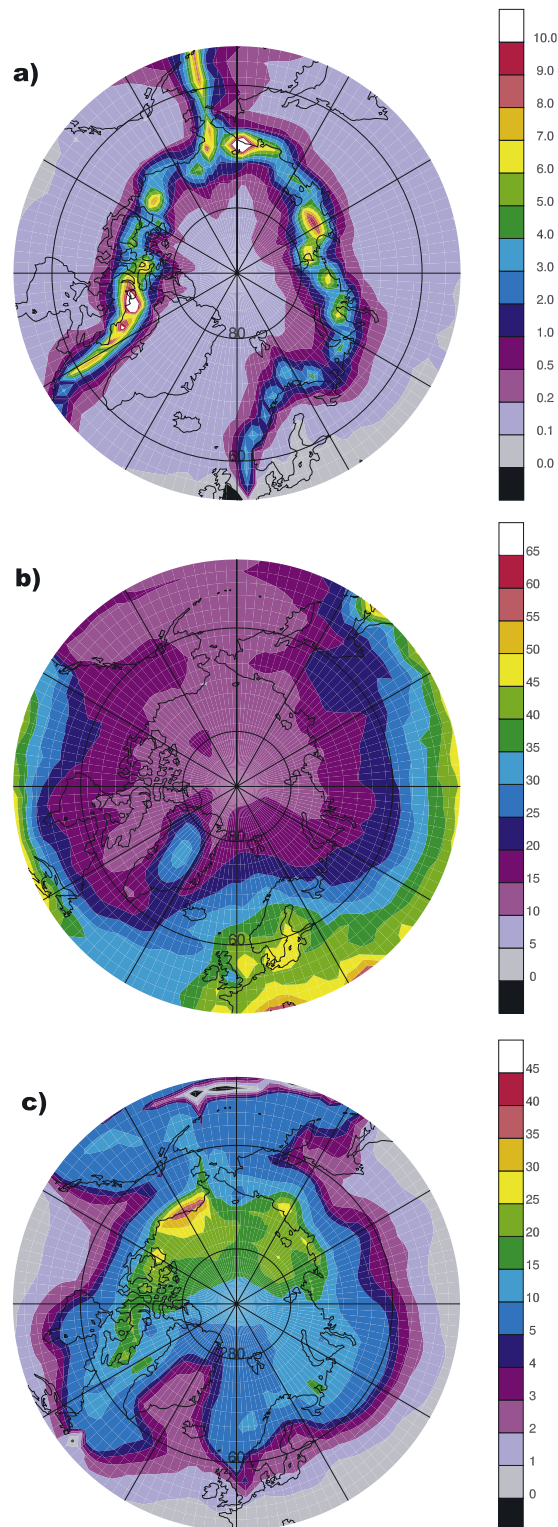


Figure 3. Surface NO_x , ozone distribution and changes in the Arctic in July. (a) Change in NO_x resulting from Arctic ships (ppbv); (b) surface ozone for current conditions (ppbv); (c) change in ozone resulting from Arctic ships (ppbv).

and August, with peaks reaching more than 60 ppbv (Figure 2). The day-to-day variability is high, and is associated with the transport of pollution plumes.

4. Summary and Conclusions

[17] In conclusion, the opening of new shipping routes in the Arctic could lead to an important increase in ozone levels in this remote region of the planet, if no specific measures are taken to limit the emissions by ship engines. Furthermore, it should be noted that combustion in ship engines produces not only a significant amount of ozone precursors, but also large quantities of carbon dioxide, as well as of particulate matter (black carbon) and sulfur dioxide, a gas that is eventually converted into sulfate aerosol particles. This could potentially have a significant impact on the local chemistry as chemical uptake on aerosols could affect NO_x and HO_x compounds. These gases and aerosols could directly or indirectly affect radiative transfer by absorbing and scattering incoming solar radiation, by affecting cloud optical properties and by reducing surface albedo (since black carbon particles can be deposited on snow and ice). The related impact on regional climate forcing resulting from the opening of the northern routes to ship traffic could therefore be significant in the Arctic.

[18] **Acknowledgments.** The authors would like to thank the ECHAM-5, OM-1 and MOZART groups (listed in the auxiliary material) for providing their models for the study. We thank S. Solomon and Elina Marmer for useful comments on the manuscript. Part of this study has been funded by the French National Program for Atmospheric Chemistry. The National Center for Atmospheric Research is sponsored by the National Science Foundation and operated by the University Corporation for Atmospheric Research.

References

- Beirle, S., U. Platt, R. von Glasow, M. Wenig, and T. Wagner (2004), Estimate of nitrogen oxide emissions from shipping by satellite remote sensing, *Geophys. Res. Lett.*, *31*, L18102, doi:10.1029/2004GL020312.
- Brasseur, G. P., M. Schultz, C. Granier, M. Sauniois, T. Diehl, M. Botzet, E. Roeckner, and S. Walters (2006), Impact of climate change on the future chemical composition of the global troposphere, *J. Clim.*, in press.
- Dentener, F., D. Stevenson, J. Cofala, R. Mechler, M. Amann, P. Bergamaschi, F. Raes, and R. Derwent (2005), The impact of air pollutant and methane emission controls on tropospheric ozone and radiative forcing: CTM calculations for the period 1990–2030, *Atmos. Chem. Phys.*, *5*, 1731–1755.
- Emmons, L. K., et al. (2003), Budget of tropospheric ozone during TOPSE from two chemical transport models, *J. Geophys. Res.*, *108*(D8), 8372, doi:10.1029/2002JD002665.
- Eyring, V., H. W. Köhler, J. van Aardenne, and A. Lauer (2005a), Emissions from international shipping: 1. The last 50 years, *J. Geophys. Res.*, *110*, D17305, doi:10.1029/2004JD005619.
- Eyring, V., H. W. Köhler, A. Lauer, and B. Lempert (2005b), Emissions from international shipping: 2. Impact of future technologies on scenarios until 2050, *J. Geophys. Res.*, *110*, D17306, doi:10.1029/2004JD005620.
- Hassel, S. J. (2004), *Arctic Climate Impact Assessment: Impacts of a warming Arctic*, Cambridge Univ. Press, New York. (Available at <http://www.acia.uaf.edu>)
- Intergovernmental Panel on Climate Change (2000), *Special Report on Emissions Scenarios*, edited by N. Nakicenovic and R. Swart, 570 pp., Cambridge Univ. Press, New York.
- Jungclaus, J. H., M. Botzet, H. Haak, N. Keenlyside, J.-J. Luo, M. Latif, J. Marotzke, U. Mikolajewicz, and E. Roeckner (2005), Ocean circulation and tropical variability in the coupled model ECHAM5/MPI-OM, *J. Clim.*, in press.
- Lawrence, M. G., and P. J. Crutzen (1999), Influence of NO_x emissions from ships on tropospheric photochemistry and climate, *Nature*, *402*, 167–170.

- Lindsay, R. W., and J. Zhang (2005), The thinning of Arctic sea ice, 1988–2003: Have we passed a tipping point?, *J. Clim.*, *18*, 4879–4894, doi:10.1175/JCLI3587.1.
- Liu, S. C., M. Trainer, F. C. Fehsenfeld, D. D. Parrish, E. J. Williams, D. W. Fahey, G. Hubler, and P. C. Murphy (1987), Ozone production in the rural troposphere and the implications for regional and global ozone distributions, *J. Geophys. Res.*, *92*, 4191–4207.
- Logan, J. A. (1999), An analysis of ozonesonde data for the troposphere: Recommendations for testing 3-D models and development of a gridded climatology for tropospheric ozone, *J. Geophys. Res.*, *104*, 16,115–16,150.
- Marsland, S. J., H. Haak, J. H. Jungclaus, M. Latif, and F. Röske (2003), The Max-Planck-Institute global ocean/sea ice model with orthogonal curvilinear coordinates, *Ocean Modell.* *5*, pp. 91–127, Hooke Inst., Oxford Univ., Oxford, England.
- Mitchell, M. (1956), Visual range in the polar regions with particular reference to the Alaskan Arctic, *J. Atmos. Terr. Phys., Spec. Suppl.*, 195–211.
- Oltmans, S. J., et al. (1998), Trends of ozone in the troposphere, *Geophys. Res. Lett.*, *25*, 139–142.
- Rahn, K. A., and R. J. McCaffrey (1979) Long-range transport of pollution aerosol to the Arctic: A problem without borders, papers presented at the WMO Symposium on the Long-Range Transport of Pollutants and its Relation to the General Circulation Including Stratospheric/Tropospheric Exchange Processes, Sofia, Bulgaria, 1–5 October.
- Stevenson, D. S., et al. (2006), Multimodel ensemble simulations of present-day and near-future tropospheric ozone, *J. Geophys. Res.*, *111*, D08301, doi:10.1029/2005JD006338.
- Stroeve, J. C., M. C. Serreze, F. Fetterer, T. Arbetter, W. Meier, J. Maslanik, and K. Knowles (2005), Tracking the Arctic’s shrinking ice cover: Another extreme September minimum in 2004, *Geophys. Res. Lett.*, *32*, L04501, doi:10.1029/2004GL021810.
-
- G. P. Brasseur, L. Emmons, P. Hess, J.-F. Lamarque, and S. Walters, National Center for Atmospheric Research, 1850 Table Mesa Drive, Boulder, CO 80305, USA.
- C. Granier, Service d’Aeronomie/IPSL, Universite Pierre et Marie Curie, 4 Place Jussieu, F-75252 Paris, Cedex 05, France. (c1g@aero.jussieu.fr)
- J. H. Jungclaus and U. Niemeier, Max Planck Institute for Meteorology, Bundesstraße 53, D-20146 Hamburg, Germany.