

	τ_1 (fs)	Ref.
Free TDMAE	300	[1]
TDMAE _{>2}	200	[5]
TDAME(Ar) _{≈60}	400	[4]
TDAME(NH ₃) _{≥2}	110	Present work
TDAME(CH ₃ CN) _{≥1}	150	Present work

Table 1: Time constant τ_1 corresponding to the change of configuration V to Z of TDMAE when TDMAE is placed in various environments.

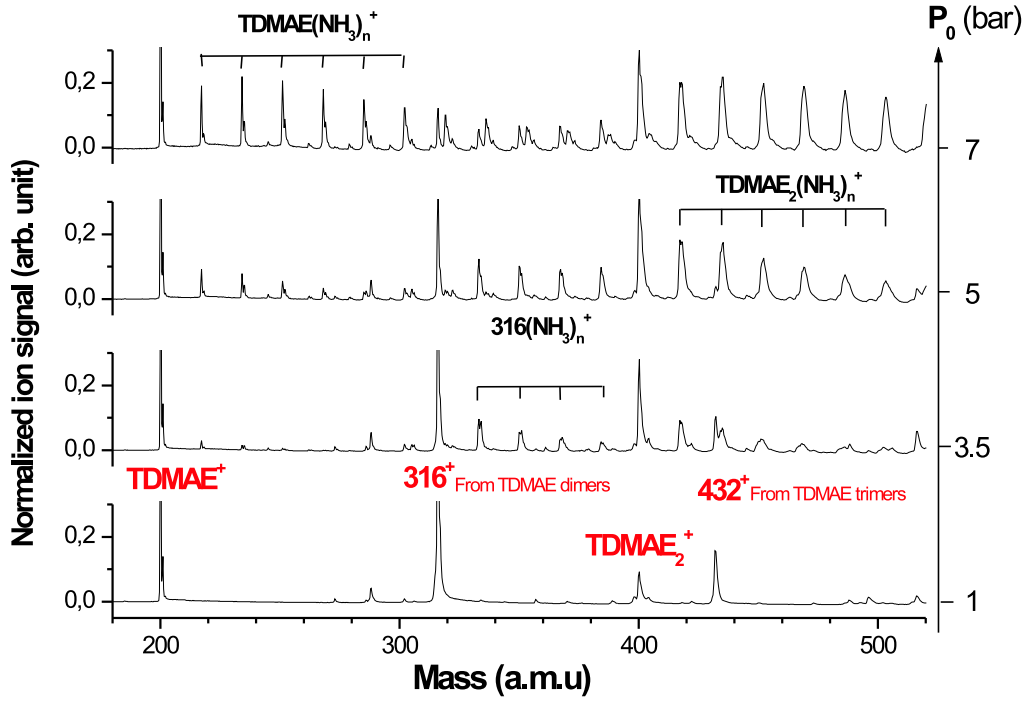


Figure 1: Mass spectrum observed upon ionisation of the helium/NH₃/TDMAE beam at 4 backing pressures, 1, 3.5, 5 and 7 bars.

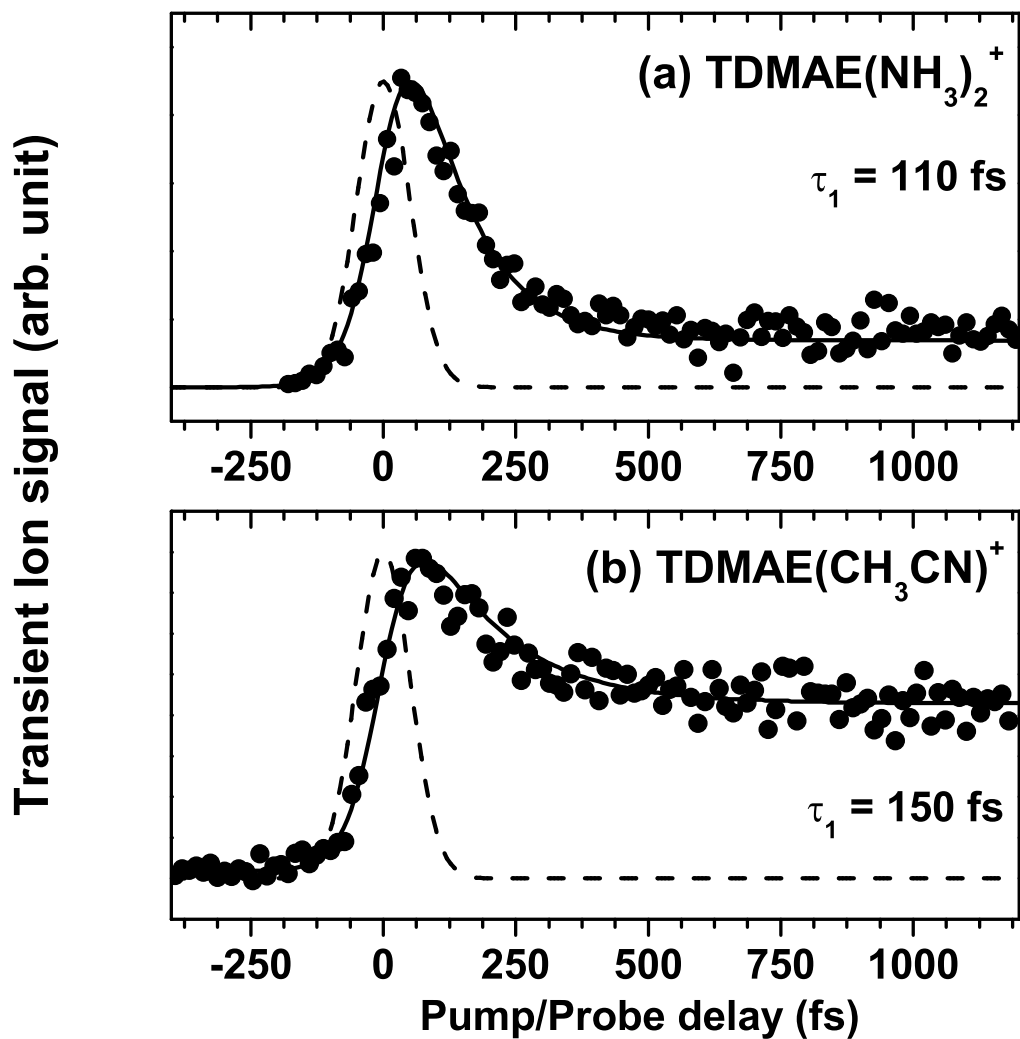


Figure 2: Evolution of the signals measured at the ion masses TDMAE(NH₃)₂⁺ (top) and TDMAE(CH₃CN)⁺ (bottom) as a function of the pump (266 nm)-probe(800 nm) delay. The full curves are fit to the experimental points using Equation (2). The dashed curves show the cross-correlation width of the lasers.