



**HAL**  
open science

# NUMERICAL ANALYSIS OF TIME-DEPENDENT GALBRUN EQUATION IN AN INFINITE DUCT

Kamel Berriri, Anne-Sophie Bonnet-Ben Dhia, Patrick Joly

► **To cite this version:**

Kamel Berriri, Anne-Sophie Bonnet-Ben Dhia, Patrick Joly. NUMERICAL ANALYSIS OF TIME-DEPENDENT GALBRUN EQUATION IN AN INFINITE DUCT. WAVES 2005, 2005, France. pp.6. hal-00021587

**HAL Id: hal-00021587**

**<https://hal.science/hal-00021587v1>**

Submitted on 22 Mar 2006

**HAL** is a multi-disciplinary open access archive for the deposit and dissemination of scientific research documents, whether they are published or not. The documents may come from teaching and research institutions in France or abroad, or from public or private research centers.

L'archive ouverte pluridisciplinaire **HAL**, est destinée au dépôt et à la diffusion de documents scientifiques de niveau recherche, publiés ou non, émanant des établissements d'enseignement et de recherche français ou étrangers, des laboratoires publics ou privés.

**K. Berriri<sup>†,\*</sup>, A.-S. Bonnet-Ben Dhia<sup>†</sup>, P. Joly<sup>†</sup>**

<sup>†</sup>Laboratory POems, UMR 2706 CNRS-INRIA-ENSTA, Paris, FRANCE

\*Email: Kamel.Berriri@inria.fr

## Abstract

In this paper we are interested in the mathematical and numerical analysis of the time-dependent Galbrun equation in a rigid duct. This equation models the acoustic propagation in the presence of a flow [1]. We propose a regularized variational formulation of the problem, in the subsonic case, suitable for an approximation by Lagrange finite elements, and corresponding absorbing boundary conditions.

## 1 Introduction

Sound propagation in a flow is a subject of great interest for numerical analysis. The main application concerns noise reduction in aeronautics. The understanding of phenomena of interaction between acoustic waves and flows is a crucial feature to find the components that efficiently reduce the sound.

Most of the mathematical and numerical studies for transient linearized aeroacoustics are based on linearized Euler equations, whose unknowns are the perturbations of velocity and pressure. Nevertheless, Galbrun equations, whose unknown is the lagrangian perturbation of displacement, are an attractive alternative to model the phenomenon of acoustic propagation in a flow. Indeed, these equations seem to have a structure similar to equations in electromagnetism and elastodynamics and they allow a simple treatment of boundary conditions.

Recent studies on Galbrun equations have focused on time harmonic dependence. We are interested here in studying the transient case.

This problem raises many theoretical and numerical difficulties. The major one is the lack of a natural functional frame for a variational setting of the problem. Moreover, a naive numerical resolution of the problem using standard nodal finite elements for the space discretization is unstable (see Figure 1). In order to overcome these difficulties, we propose a regularization method analogous to the one developed for Maxwell's equations [3]. This allows to derive a variational formulation suitable for an approximation by Lagrange finite elements.

## 2 Statement of the problem

Let  $\Omega = \mathbb{R} \times ]-h, h[$  be a two-dimensional rigid duct containing a compressible fluid. We suppose that this fluid is

in motion and that the flow can be described by a profile of Mach's number  $M(y)$  ( $M \in ]-1, 1[$ ). If  $\mathbf{f}$  denotes the source of acoustic waves, we have to solve the transient Galbrun equation in dimensionless form ( $\boldsymbol{\xi}$  is the perturbation of lagrangian displacement):

$$\frac{D^2 \boldsymbol{\xi}}{Dt^2} - \nabla(\operatorname{div} \boldsymbol{\xi}) = \mathbf{f} \text{ in } \Omega \times \mathbb{R}_+^* \quad (1)$$

$$\boldsymbol{\xi} \cdot \mathbf{n} = 0 \text{ on } \partial\Omega \times \mathbb{R}_+^* \quad (2)$$

where  $\frac{D}{Dt} = \frac{\partial}{\partial t} + M(y)\frac{\partial}{\partial x}$  is the material derivative and  $\mathbf{n}$  the unit outward normal vector to  $\partial\Omega$ . We complete the equations (1)-(2) by adding initial conditions.

## 3 The Lagrangian vorticity equation

When  $\mathbf{f} \in H(\operatorname{curl}, \Omega)$ , applying the curl operator to (1), we prove that the curl  $\boldsymbol{\xi} = \boldsymbol{\psi}$  satisfies:

$$\frac{D^2 \boldsymbol{\psi}}{Dt^2} = 2M'(y)\frac{D}{Dt}\left(\frac{\partial \boldsymbol{\xi}_x}{\partial x}\right) + \operatorname{curl} \mathbf{f} \text{ in } \Omega \times \mathbb{R}_+^* \quad (3)$$

Note that when the flow is uniform ( $M(y)$  is constant), the vorticity  $\boldsymbol{\psi}$  can be computed independently of  $\boldsymbol{\xi}$  and the solution is given by :

$$\boldsymbol{\psi}(x, y, t) = \alpha(x - Mt, y) + x\beta(x - Mt, y) + \frac{1}{M^2} \int_0^x (x - a)(\operatorname{curl} \mathbf{f})(a, y, t - \frac{x-a}{M}) da$$

where  $\alpha$  et  $\beta$  are two functions that depend only of initial conditions of the problem.

## 4 Regularized Formulation Galbrun equation

The idea of the regularization, initially introduced for Maxwell's equations, was extended to the time harmonic Galbrun equation by A. S Bonnet-Bendhia and al (2001). The idea consists in adding the artificial term  $s \operatorname{curl}(\operatorname{curl} - \psi)$  to Galbrun equation.

We replace the initial value problem (1)-(2) by the equivalent *regularized* problem :

$$\begin{cases} \frac{D^2 \boldsymbol{\xi}}{Dt^2} - \nabla(\operatorname{div} \boldsymbol{\xi}) + s \operatorname{curl}(\operatorname{curl} \boldsymbol{\xi} - \boldsymbol{\psi}) = \mathbf{f} & \text{in } \Omega \times \mathbb{R}_+ \\ \frac{D}{Dt} \left( \frac{D \boldsymbol{\psi}}{Dt} - 2M'(y)\frac{\partial \boldsymbol{\xi}_x}{\partial x} \right) = \operatorname{curl} \mathbf{f} & \text{in } \Omega \times \mathbb{R}_+^* \\ \boldsymbol{\xi} \cdot \mathbf{n} = 0, \operatorname{curl} \boldsymbol{\xi} = \boldsymbol{\psi} & \text{on } \partial\Omega \times \mathbb{R}_+ \end{cases} \quad (4)$$

where  $s$  is a non negative parameter.

In this paper we restrict to the case of uniform flow ( $M'(y) = 0 \quad \forall y \in ]-h, h[$ ) for which the problem in  $\psi$  and  $\xi_x$  are decoupled. The study of the coupled system will be a subject of future works

## 5 Mathematical analysis of the regularized problem

When the Mach number is constant the vorticity  $\psi$  is known and the problem in  $\xi$  is written :

$$\begin{cases} \frac{D^2 \xi}{Dt^2} - \nabla(\operatorname{div} \xi) + s \operatorname{curl}(\operatorname{curl} \xi) = \mathbf{f}_s & \text{in } \Omega \times \mathbb{R}_+ \\ \xi \cdot \mathbf{n} = 0, \quad \operatorname{curl} \xi = \psi & \text{on } \partial\Omega \times \mathbb{R}_+ \end{cases} \quad (5)$$

where  $\mathbf{f}_s = \mathbf{f} + s \operatorname{curl} \psi$ .

The second boundary condition ( $\operatorname{curl} \xi = \psi$ ) of system (5) is necessary for the equivalence with the initial problem (1)-(2). The property of ellipticity of the spatial operator  $-\nabla(\operatorname{div}) + s \operatorname{curl}(\operatorname{curl})$  (which equals  $-\Delta$  if  $s = 1$ ) allows to carry out the mathematical and numerical study of this problem in a classical frame.

We consider  $\mathcal{H} := \mathbf{H}_0(\Omega) \times L^2(\Omega)^2$  where

$$\mathbf{H}_0(\Omega) := \{ \xi \in (H^1(\Omega))^2 / \xi \cdot \mathbf{n} = 0, \text{ on } \partial\Omega \}.$$

To apply Hille-Yosida theorem, we introduce a new unknown  $\zeta = D\xi/Dt$ . If we pose  $\mathbf{U} = (\xi, \zeta)^t$ , then we can rewrite (5) under the following form :

$$\begin{cases} \frac{d\mathbf{U}}{dt} + A_s \mathbf{U} = \mathbf{F}_s \\ \mathbf{U}(0) = \mathbf{U}_0 \end{cases} \quad (6)$$

$$A_s \mathbf{U} = \begin{pmatrix} -\zeta + M \frac{\partial \xi}{\partial x} \\ -\nabla(\operatorname{div} \xi) + s \operatorname{curl}(\operatorname{curl} \xi) + M \frac{\partial \zeta}{\partial x} \end{pmatrix},$$

$$\mathbf{F}_s = \begin{pmatrix} 0 \\ \mathbf{f}_s \end{pmatrix}.$$

The domain of the unbounded operator  $A_s$  is defined by :

$$D(A_s) = \{ \mathbf{U} = (\xi, \zeta)^t \in \mathcal{H} \text{ tel que } A_s \mathbf{U} \in \mathcal{H} \}.$$

Using Costabel's identity [3] and Hille-Yosida's theory, we prove that the operator  $A_s$  is maximal monotone

**Theorem 5.1 :** *If  $\min(1, s) > M^2$ , then for  $\mathbf{f}_s \in C^1(\mathbb{R}_+; L^2(\Omega)^2)$  and sufficiently regular initial data, problem (5) has a unique solution which satisfies:*

$$\xi \in C^1(\mathbb{R}_+; \mathbf{H}_0) \cap C^2(\mathbb{R}_+; L^2(\Omega)^2)$$

## 6 The absorbing boundary conditions

For solving numerically the problem, we need to truncate the unbounded domain  $\Omega$ . The truncated domain  $\Omega_b := ]-R; R[ \times ]-h; h[$  requires the introduction of absorbing boundary conditions (ABCs) on the artificial boundaries  $\Gamma^\pm := \{(x, y) \in \Omega, x = \pm R\}$  ( $R > 0$ ). The difficulty is to find appropriate boundary conditions adapted for the regularized formulation. For  $s = 1$ , the boundary conditions that we propose are the following :

$$\frac{D\xi}{Dt} + \frac{\partial \xi}{\partial n} = \mathbf{0} \quad \text{on } \Gamma^\pm \quad (7)$$

where  $\mathbf{n} = (\pm 1, 0)$  is the unit outward normal vector of  $\Gamma^\pm$  and  $\boldsymbol{\tau} = (0, \pm 1)$ . The main properties of conditions (7) are

i) These are exact conditions for  $y$ -independent solutions (plane waves) : this is why we speak of first order conditions.

ii) Well-posedness: the truncated problem is well posed and for  $\mathbf{f} = \mathbf{0}$  we have the energy decay result:

$$\frac{d}{dt} E(t) + \int_{\Gamma^- \cup \Gamma^+} \left| \frac{\partial \xi}{\partial t} \right|^2 = 0$$

where

$$E(t) = \frac{1}{2} \int_{\Omega_b} \left| \frac{\partial \xi}{\partial t} \right|^2 + |\nabla \xi|^2 - M^2 \left| \frac{\partial \xi}{\partial x} \right|^2$$

iii) These are compatible with a variational formulation of the regularized problem, namely:

$$\begin{aligned} \frac{d^2}{dt^2} (\xi, \eta) + \frac{d}{dt} (b(\xi, \eta) + c^{\Gamma^\pm}(\xi, \eta)) \\ + a(\xi, \eta) + d^{\Gamma^\pm}(\xi, \eta) = (\mathbf{f}, \eta) \end{aligned} \quad (8)$$

with  $(\cdot, \cdot)$  is the  $L^2$ -inner product and

$$a(\xi, \eta) = \int_{\Omega_b} \operatorname{div} \xi \operatorname{div} \eta + \operatorname{curl} \xi \operatorname{curl} \eta - M^2 \frac{\partial \xi}{\partial x} \cdot \frac{\partial \eta}{\partial x},$$

$$b(\xi, \eta) = \int_{\Omega_b} 2M\xi \cdot \frac{\partial \eta}{\partial x}, \quad c^{\Gamma^\pm}(\xi, \eta) = \int_{\Gamma^\pm} (1 \pm M)\xi \cdot \eta \, d\gamma,$$

$$d^{\Gamma^\pm}(\xi, \eta) = \int_{\Gamma^- \cup \Gamma^+} \mathcal{R} \frac{\partial \xi}{\partial \boldsymbol{\tau}} \cdot \eta \, d\gamma, \quad \mathcal{R} = \begin{pmatrix} 0 & -1 \\ 1 & 0 \end{pmatrix}$$

**Remark 6.1** *The construction of good absorbing boundary conditions is not trivial. For example the following natural ABC's :*

$$(1 - M^2) \frac{\partial \xi_1}{\partial x} + \frac{\partial \xi_2}{\partial y} \pm (1 \mp M) \frac{\partial \xi_1}{\partial t} \Big|_{\Gamma^\pm} = 0 \quad (9)$$

$$(1 - M^2) \frac{\partial \xi_2}{\partial x} - \frac{\partial \xi_1}{\partial y} \pm (1 \mp M) \frac{\partial \xi_2}{\partial t} \Big|_{\Gamma^\pm} = 0 \quad (10)$$

are still exact for plane waves and variational, but not stable.

## 7 Discretization of Galbrun equations

The Lagrange finite element approximation of (8) leads to the following ordinary differential system :

$$\mathbb{M}_h \frac{d^2 \xi_h}{dt^2} + ((\mathbb{B}_h + \mathbb{C}_h^{\Gamma^\pm}) \frac{d \xi_h}{dt} + (\mathbb{A}_h + \mathbb{D}_h^{\Gamma^\pm}) \xi_h) = \mathbf{F}_h \quad (11)$$

where  $\mathbb{M}_h$  is the mass matrix, and  $\mathbb{A}_h$ ,  $\mathbb{B}_h$ ,  $\mathbb{C}_h^{\Gamma^\pm}$  and  $\mathbb{D}_h^{\Gamma^\pm}$  are the matrices respectively associated to the bilinear forms  $a(\cdot, \cdot)$ ,  $b(\cdot, \cdot)$ ,  $c^{\Gamma^\pm}(\cdot, \cdot)$  and  $d^{\Gamma^\pm}(\cdot, \cdot)$ .

For the time discretization of (11) we use a centered second order finite difference scheme :

$$\mathbb{M}_h \frac{\xi_h^{n+1} - 2\xi_h^n + \xi_h^{n-1}}{\Delta t^2} + (\mathbb{B}_h + \mathbb{C}_h^{\Gamma^\pm}) \frac{\xi_h^{n+1} - \xi_h^{n-1}}{2\Delta t} + (\mathbb{A}_h + \mathbb{D}_h^{\Gamma^\pm}) \xi_h^n = \mathbf{F}_h^n$$

## 8 Numerical Simulation

In this first experiment, we simulate a wave initially excited by a rotational source located in the center of the domain, in the presence of a horizontal uniform flow with  $M = 0.5$ . The first simulation shows that the method is not stable if the equation is not regularized ( $s = 0$ ).



Figure 1: Euclidean norm of  $\xi$  at  $t_1 = 1.5s$  and  $t_2 = 1.75s$  and  $t_3 = 2s$ . Case  $s = 0$

The second simulation corresponds to the regularized case ( $s = 1$ ). When can distinguish the two parts of the Lagrangian displacement : the irrotational part corresponds to the outer circular wavefront (whose radius increases with time) while the rotational part corresponds to the inner circular wavefront (whose radius remains constant). Both are centered at a point which is convected by the flow.

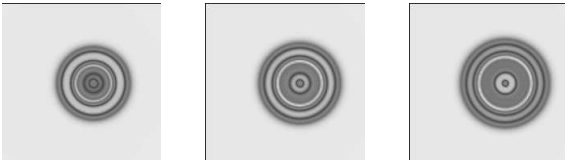


Figure 2: Euclidean norm of  $\xi$  at  $t_1 = 1.5s$  and  $t_2 = 1.75s$  and  $t_3 = 2s$ . Case  $s = 1$

In the second experiment, we simulate Galbrun wave propagation in an infinite rigid duct. The wave is excited by a Gaussian signal in time and a quasi-punctual irrotational source in space in the uniform flow with  $M = 0.5$ . We remark on this result that the ABC prevents (partially) the unphysical reflexion.

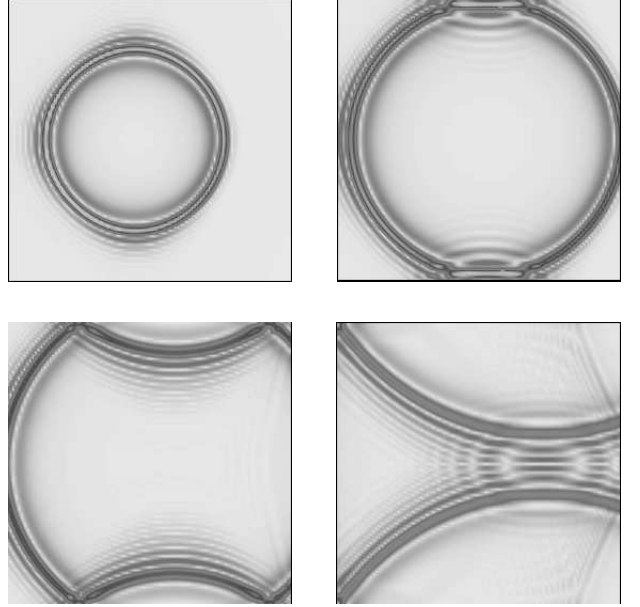


Figure 3: Evolution of the Euclidean norm of the displacement  $\xi$

## References

- [1] H. Galbrun, "Propagation d'une onde sonore dans l'atmosphère terrestre et théorie des zones de silence", Gauthier-Villars, Paris, 1931.
- [2] G. Legendre, "Rayonnement acoustique dans un fluide en écoulement : analyse mathématique et numérique de l'équation de Galbrun, PHD thesis 2003.
- [3] M. Costabel, "A coercive bilinear form for Maxwell's equations", J. Math. Anal. Appl, 157, pp. 527-541, 1991