



HAL
open science

On a New Mechanism of Pattern Formation in Population Dynamics

Stéphane Génieys, Vitaly Volpert, Pierre Auger

► **To cite this version:**

Stéphane Génieys, Vitaly Volpert, Pierre Auger. On a New Mechanism of Pattern Formation in Population Dynamics. 2005. <hal-00014486>

HAL Id: hal-00014486

<https://hal.science/hal-00014486v1>

Preprint submitted on 28 Nov 2005

HAL is a multi-disciplinary open access archive for the deposit and dissemination of scientific research documents, whether they are published or not. The documents may come from teaching and research institutions in France or abroad, or from public or private research centers.

L'archive ouverte pluridisciplinaire **HAL**, est destinée au dépôt et à la diffusion de documents scientifiques de niveau recherche, publiés ou non, émanant des établissements d'enseignement et de recherche français ou étrangers, des laboratoires publics ou privés.



HAL Authorization

On a New Mechanism of Pattern Formation in Population Dynamics

S. Genieys¹, V. Volpert¹, P. Auger²

¹ Camille Jordan Institute of Mathematics, UMR 5208 CNRS, University Lyon 1
69622 Villeurbanne, France

² Institute of Research and Development, 93143 Bondy, France

Abstract. We study a reaction-diffusion equation with an integral term describing nonlocal consumption of resources. We show that a homogeneous equilibrium can lose its stability resulting in appearance of stationary spatial structures. It is a new mechanism of pattern formation in population dynamics that can explain emergence of biological species due to intra-specific competition and random mutations. Travelling waves connecting an unstable homogeneous equilibrium and a periodic in space stationary solution are studied numerically.

1. Introduction

The concept of degeneracy in biology was proposed by Edelman in 1978 in relation with natural selection in biological systems (see [1]). Degeneracy, according to his definition, means the ability of elements that are structurally different to perform the same function or yield the same output. He points out that degeneracy is necessary for natural selection where natural selection is understood here not only in the context of the evolution of biological species but for many other biological systems including cell populations, immune systems, brain cortex and others. Degeneracy is related to robustness of biological systems and to their ability to compensate lost or damaged functions. For example, some proteins thought to be indispensable for human organisms can be completely absent in some individuals (see [1]). There are also many examples related to the cortex activity where some functions of the damaged area can be taken by some other areas.

In [2], Kupiec and Sonigo emphasize many physiological situations such as cell differentiation or immunology, where darwinian selection processes arise. They show that degeneracy and competition are very common phenomena leading to the emergence of structures.

Atamas studies the degeneracy in terms of signals and recognizers [3]. Each recognizer can receive not only the signal, which corresponds it exactly, but also close signals. He suggests

that each element recognizes a corresponding signal with a very high specificity, which is not however absolute. The same element can recognize other more or less similar signals though with less probability. For example, it can be antigen receptors and antibodies that have relative but not absolute specificity of recognition. He fulfils numerical simulations with the individual based approach where the recognizers can receive signals with degenerate specificity and can reproduce themselves. This can be considered as a model for natural selection with degenerate recognition. The results of the numerical simulations show that initially localized population of recognizers can split into two subpopulations. Therefore the degeneracy can result in the emergence of new species due to intraspecific competition and selection.

In this work we study degeneracy in biological system with continuous models. We consider them in the context of population dynamics. Starting with the classical logistic equation describing reproduction and migration of individuals of a biological species, we introduce a nonlocal consumption of resources that can influence the death function. One of possible interpretation of this model is as follows. Suppose that each individual is characterized by his positions (x, y) at time t . The characteristic time scale is related to reproduction and can be measured for example in years. The individual can slowly migrate changing from time to time his position. For example it can be related to a new nesting place every year or every several years. The reproduction takes place at the same space point. However, contrary to conventional models in population dynamics we consider the space point (x, y) not as the exact position of the individual but as his average position. This means that his nesting (reproduction) place is still a point but he can consume resources in some area around the point (x, y) . Therefore the death function, which takes into account the competition for the resources, depends not only on the individuals located at the point (x, y) but also on those who are in some area around. We can ask the question, why the individuals coming to consume the resources at the point (x, y) influence the death function at this point. One of possible answer could be for example that young individuals who are attached to their nesting place and who cannot yet consume the resources in a bigger area will have less chances to survive. We will specify the model in the next section.

We will discuss also another interpretation of the model related to the evolution of biological species. In this case the space variable corresponds to some morphological characteristics and diffusion to a random small change of this characteristics due to mutations. The degeneracy in this case means that individuals with different values of this morphological characteristics can consume the same resources and are in competition for these resources. It can be for example the size of the beak for birds eating the same seeds or the height of the herbivores eating the same plants.

We will show that the homogeneous equilibrium stable in the case of the usual logistic equation can become unstable in the case of nonlocal consumption of resources. It is a new mechanism of pattern formation where spatial structures can appear not because of the competition between two species as in the case of Turing structures but for a single species. In the context of population dynamics it can be interpreted as emergence of new species due to the intra-specific competition and random mutations. If the population is initially

localized it will split into several separate subpopulations. Its dynamics resembles Darwin's schematic representation of the evolution process. Such behavior cannot be described by the logistic equation without nonlocal terms.

Similar to the conventional reaction-diffusion equation, reaction-diffusion equation with integral terms can have travelling wave solutions. Depending on the parameters it can be either a usual travelling wave with a constant speed and a stable homogeneous equilibrium behind the wave or a periodic wave with a periodic in space solution behind the wave. Their speeds of propagation (average speed for the periodic wave) are the same as the minimal speed for the monostable reaction-diffusion equation. It is determined only by the diffusion coefficients and by the derivative of the nonlinearity at the unstable equilibrium.

We note that there is a number of works where the diffusion term is replaced by an integral term describing a nonlocal interaction (see, e.g., [4]). In spite of some similarity of the models they are quite different. The scalar equation with the nonlocal diffusion term satisfies the comparison principle and cannot describe emergence of spatial patterns and propagation of periodic waves.

Mathematical properties of some integro-differential evolution equations are studied in [5,6].

2. Model with a nonlocal interaction

We begin with a well established in population dynamics model taking into account migration of individuals. We suppose that they move randomly during their life time and all direction of motion are equally possible. If $p(r)dr$ is the probability of the displacement on the distance between r and $r + dr$ at the unit time measured in generations, then

$$\rho = \sqrt{\int_0^\infty r^2 p(r) dr}$$

is a meansquare displacement during one generation (see, e.g. [7]). Assuming that migration is independent of the rate of birth and death, we obtain a local change of the density N of the population at the point (x, y) during the time interval Δt :

$$\Delta N(x, y, t) = \left(\int N(x', y', t) \frac{p(r)}{2\pi r} dx' dy' - N(x, y, t) + F(N, x, y) \right) \Delta t,$$

where $r = \sqrt{(x' - x)^2 + (y' - y)^2}$. Using the Taylor expansion for $N(x', y', t)$ around (x, y) we obtain the nonlinear diffusion equation

$$\frac{\partial N}{\partial t} = d \left(\frac{\partial^2 N}{\partial x^2} + \frac{\partial^2 N}{\partial y^2} \right) + F, \quad (2.1)$$

where $d = \rho^2/4$ is the diffusion coefficient, F is the local rate of growth of the population. Usually it is considered in the form

$$F = (B - D)N, \quad (2.2)$$

where B is the birth function and D is the death function. The birth function $B(N)$ has a sigmoidal form and it is constant for N sufficiently large. The death function D is usually considered in the form

$$D(N) = b + kN, \quad (2.3)$$

where the first term in the right-hand side describe the natural death, and the second term its increase because of the competition for limited resources. This form of the death function implies that the resources are consumed locally, that is exactly at the same point (x, y) where the individual is located.

In a more general and more realistic case the resources can be consumed in some neighborhood of this point. We take this into account in the death function:

$$D(x, y, t) = b + k \int_0^t \left(\int_{(x,y)} \phi(x - x', y - y', t - t') N(x', y', t') dx' dy' \right) dt'.$$

Here $\phi(x - x', y - y', t - t')$ is the function that shows how the individuals located at (x', y') and at time t' influence the resources at the point (x, y) at time t . This expression for the death function means that survival of individuals at the point (x, y) depends on the resources available at this point. On the other hand, these resources are consumed not only by the individuals that have their average position at this point but also by the individuals from some area around it.

If the motion of the individuals is fast with respect to the given time scale, then the location of the individual with an average position at the origin is time independent and given by the probability density function $\phi_0(x, y)$. If we assume moreover that the resources are renewed with a small characteristic time compared with other time scales (reproduction, death, migration), then the influence function $\phi(x - x', y - y', t - t')$ is concentrated at $t = t'$ and equals zero for $t' < t$:

$$\phi(x - x', y - y', t - t') = \phi_0(x - x', y - y') \delta(t - t').$$

Thus we obtain the modified expression of the death function:

$$D(x, y, t) = b + k \int_{(x,y)} \phi_0(x - x', y - y') N(x', y', t) dx' dy'. \quad (2.4)$$

We note that if $\phi_0(x, y)$ is the Dirac δ -function, then it is reduced to (2.3). Substituting (2.2) and (2.4) into (2.1) we obtain the integro-differential equation

$$\frac{\partial N}{\partial t} = d \left(\frac{\partial^2 N}{\partial x^2} + \frac{\partial^2 N}{\partial y^2} \right) + \left(B(N) - b - k \int \phi_0(x - x', y - y') N(x', y', t) dx' dy' \right) N. \quad (2.5)$$

We will analyze this model in the one-dimensional spatial case where $B(n)$ is a constant.

3. Evolution of species

In the previous section we considered a spatial distribution of individuals in a population and its evolution in time. Let us characterize the population not by individuals but by genes.

Consider a gene G and suppose that due to mutations it can be in different states, which we denote by x_i , $i = 1, \dots, N$. Let $c_i(t)$ be the number of genes in the population at the state x_i at time t . We suppose further that mutations can happen only between the neighboring states, that is for the state x_i the gene can go to one of the states x_{i-1} and x_{i+1} . If we assume that all transitions are reversible and have equal probability p , then the number of genes changing their state from x_{i-1} to x_i during the unit time will be pc_{i-1} . The number of opposite transitions is pc_i . Therefore the flux of the concentration at x_i is

$$f_i = p(c_{i-1} - c_i).$$

The probability p of the transition depends on the distance between the states and will be considered in the form

$$p = \frac{d}{x_i - x_{i-1}},$$

where d is some constant. We suppose for simplicity that the distances between the neighboring states are the same and that d does not depend on i . The last expression is well defined if the distance between the states is sufficiently large.

Thus, under the assumptions above we come to the usual diffusion fluxes. Passing from the discrete to continuous model we obtain the equation

$$\frac{\partial c}{\partial t} = d \frac{\partial^2 c}{\partial x^2} + (B - D)c, \quad (3.1)$$

where $c(x, t)$ is the concentration of genes at the state x at time t , and, as above, B is a birth function, D is a death function. Taking into account the nonlocal consumption of the resources we come to the same model as in Section 2.

4. Stationary solutions

Consider the equation

$$\frac{\partial c}{\partial t} = d \frac{\partial^2 c}{\partial x^2} + c \left(a - \int_{-\infty}^{\infty} \phi(x - y)c(y)dy \right) - bc \quad (4.1)$$

for $x \in \mathbb{R}$. Here a and b are some constants, $\phi(y)$ is a function with a bounded support and such that

$$\int_{-\infty}^{\infty} \phi(y)dy = 1. \quad (4.2)$$

We will assume that $\phi(y)$ is nonnegative, even and identically equal zero for $|y| \geq N$. If its support tends to zero, then we obtain in the limit the δ -function, and equation (4.1) becomes the usual reaction-diffusion equation

$$\frac{\partial c}{\partial t} = d \frac{\partial^2 c}{\partial x^2} + c(a - c) - bc \quad (4.3)$$

often considered in population dynamics and in other applications.

It can be easily verified that equation (4.1) has two homogeneous in space stationary solutions, $c_0(x) = 0$ and $c_1(x) = a - b$. These are also stationary solutions of equation (4.3).

5. Stability

If $a > b$, then $c_1(x)$ is a stable stationary solution of equation (4.3). We will show that it can be unstable as a solution of equation (4.1). Linearizing this equation about c_1 , we obtain the eigenvalue problem

$$dc'' - \sigma \int_{-\infty}^{\infty} \phi(x-y)c(y)dy = \lambda c, \quad (5.1)$$

where $\sigma = a - b$. Applying the Fourier transform to this equation, we have

$$(d\xi^2 + \sigma\tilde{\phi}(\xi) + \lambda)\tilde{c}(\xi) = 0, \quad (5.2)$$

where the tilde denotes the Fourier transform of the corresponding function. This equation has nonzero solutions at the points of the spectrum, that is for such values of λ that

$$d\xi^2 + \sigma\tilde{\phi}(\xi) + \lambda = 0. \quad (5.3)$$

Consider the function

$$\Phi(\xi) = d\xi^2 + \sigma\tilde{\phi}(\xi).$$

If it becomes negative for some values of ξ , then there are positive λ satisfying equation (2.4). In this case, the stationary solution c_1 is unstable.

We note that

$$\tilde{\phi}(0) = \int_{-\infty}^{\infty} \phi(y)dy = 1.$$

Therefore, for any given continuous and bounded function $\tilde{\phi}(\xi)$, $\Phi(\xi)$ becomes strictly positive if d is sufficiently large. Thus, there is no instability if the diffusion coefficient is large.

By virtue of the assumption that the function $\phi(y)$ is even, we have

$$\tilde{\phi}(\xi) = \int_{-\infty}^{\infty} \phi(y) \cos(\xi y) dy.$$

The assumption that the function $\phi(y)$ has a bounded support and condition (4.2) are not essential for the stability analysis. For the functions

$$\phi_1(y) = e^{-ay^2}, \quad \phi_2(y) = e^{-a|y|} \quad (a > 0),$$

we have

$$\tilde{\phi}_1(\xi) = \sqrt{\frac{\pi}{a}} e^{-\xi^2/(4a)}, \quad \tilde{\phi}_2(\xi) = \frac{2a}{a^2 + b^2},$$

respectively. Therefore, $\Phi(\xi)$ is positive for all ξ , and the stationary solution c_1 is stable.

6. Piece-wise constant distribution

Consider the following function:

$$\phi(y) = \begin{cases} 1/(2N) & , |y| \leq N \\ 0 & , |y| > N \end{cases}. \quad (6.1)$$

Then

$$\tilde{\phi}(\xi) = \frac{1}{2N} \int_{-N}^N \cos(\xi y) dy = \frac{1}{\xi N} \sin(\xi N)$$

and

$$\Phi(\xi) = d\xi^2 + \frac{\sigma}{\xi N} \sin(\xi N).$$

Depending on the parameters, this function can be strictly positive or can change sign. It can be easily verified that $\Phi(0) = \sigma > 0$, and it is positive for $|\xi|$ sufficiently large. If the diffusion coefficient is large, then $\Phi(\xi)$ is positive for all ξ , and the stationary solution is stable. The instability can appear if d is small enough.

In the critical case, in which the function $\Phi(x)$ is nonnegative and not strictly positive, it satisfies the equalities

$$\Phi(\xi_0) = 0, \quad \Phi'(\xi_0) = 0$$

for some ξ_0 . It follows from these relations:

$$d\xi_0^2 + \frac{\sigma}{\xi_0 N} \sin(\xi_0 N) = 0, \quad 2d\xi_0 - \frac{\sigma}{\xi_0^2 N} \sin(\xi_0 N) + \frac{\sigma}{\xi_0} \cos(\xi_0 N) = 0.$$

Let us introduce the following notations: $\mu = d/\sigma, z = \xi_0 N$. Then the previous equations can be written in the form

$$\mu\xi_0^2 + \frac{\sin z}{z} = 0, \quad 2\mu\xi_0^2 - \frac{\sin z}{z} + \cos z = 0. \quad (6.2)$$

Eliminating $\mu\xi_0^2$, we obtain from these two equations the equation with respect to z :

$$\tan z = \frac{1}{3}z. \quad (6.3)$$

This equation has an infinite number of solutions. We will consider only positive solutions. Denote them by z_1, z_2, \dots . For each of them we can find from the first equation in (6.2) the relation

$$\mu = -N \frac{\sin z_j}{z_j^3}, \quad j = 1, 2, \dots \quad (6.4)$$

Thus we have a countable number of curves on the (N, μ) -plane. Each of them gives the values of parameters for which the spectrum of the eigenvalue problem (2.1) crosses the

origin. We note that $\sin z_j$ is positive for even j and negative for odd j . Since μ is positive, we will consider only odd values of j .

It can be easily verified that

$$-\frac{\sin z_1}{z_1^3} > -\frac{\sin z_3}{z_3^3} > \dots$$

Therefore

$$\mu_1(N) > \mu_3(N) > \dots \quad \text{for } N > 0.$$

We have seen in the previous section that there is no instability if d is sufficiently large. Therefore, $\mu > \mu_1(N)$ corresponds to the stability region, $\mu < \mu_1(N)$ corresponds to the instability region. The stability boundary is given by the equation

$$\mu = \mu_1(N). \tag{6.5}$$

We can also find the period τ of the spatial structure at the stability boundary:

$$\tau = \frac{2\pi}{\xi_0} = \frac{2\pi N}{z_1}.$$

Let us consider a fixed value of μ and vary N . For N small enough the homogeneous stationary solution is stable. For some critical value of N such that (6.5) is satisfied, it loses its stability. For greater values of N , the solution remains unstable and other points of the spectrum can cross the origin.

Suppose now that we consider a bounded interval with the length L and with the periodic boundary conditions. The analysis above remains valid but we need to take into account the period of the perturbation. We fix $\xi = 2\pi/L$ and consider the equation $\Phi(\xi) = 0$. We obtain the equation $\sin z = -\mu\xi^2 z$. If μ is sufficiently large, then the equation does not have nonzero solutions. In the critical case we should also equate the derivatives of the function in the left-hand side and in the right-hand side of the last equality: $\cos z = -\mu\xi^2$. Therefore we can find z from the equation $\tan z = z$, and the critical value of μ from the relation $\mu = -(\sin z)/(\xi^2 z)$.

7. Emergence of structures

Equation (2.1) is considered on the segment $[0, L]$ with periodic boundary conditions. It is discretised by using an explicit finite differences scheme. The function Φ is piece-wise constant as described in equation (6.1). The integral is approximated by the trapeze method.

Figure 1 shows the behavior of the solution of equation (4.1) for the values of parameters $d = 0.05$, $a = 2$, $N = 3$, $b = 1$ and $L = 10$ and for the initial condition $c(x, 0) = a - b$ perturbed by a small random noise. This initial homogeneous equilibrium is unstable and a spatial structure appears. Note that in accordance with the stability analysis (Section 6) the homogeneous equilibrium is unstable only for small values of the diffusion coefficient d .

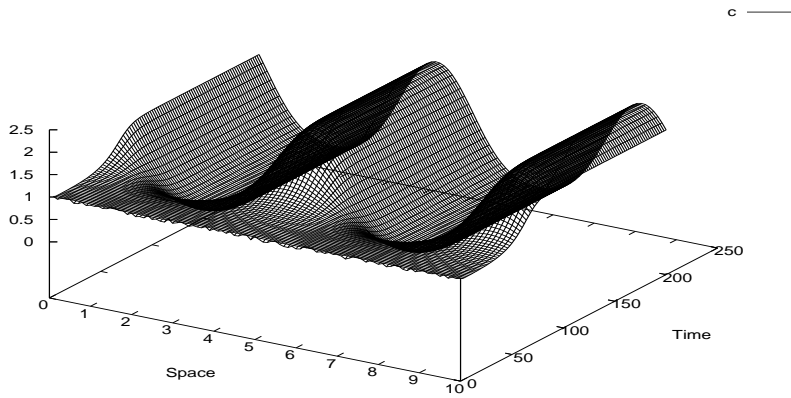


Figure 1: Emergence of spatial structure

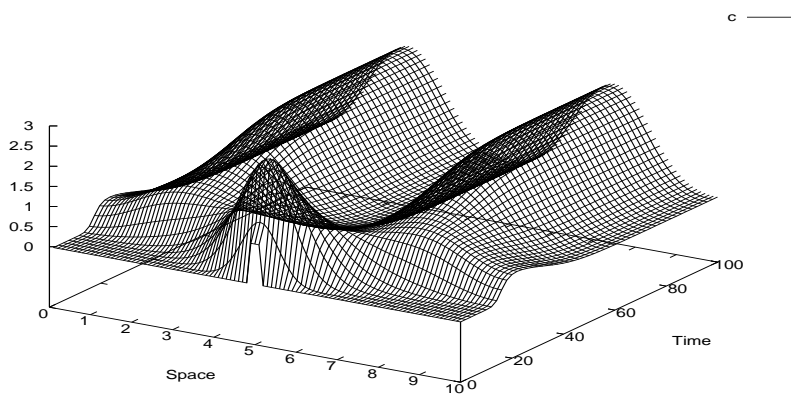


Figure 2: Splitting of a population

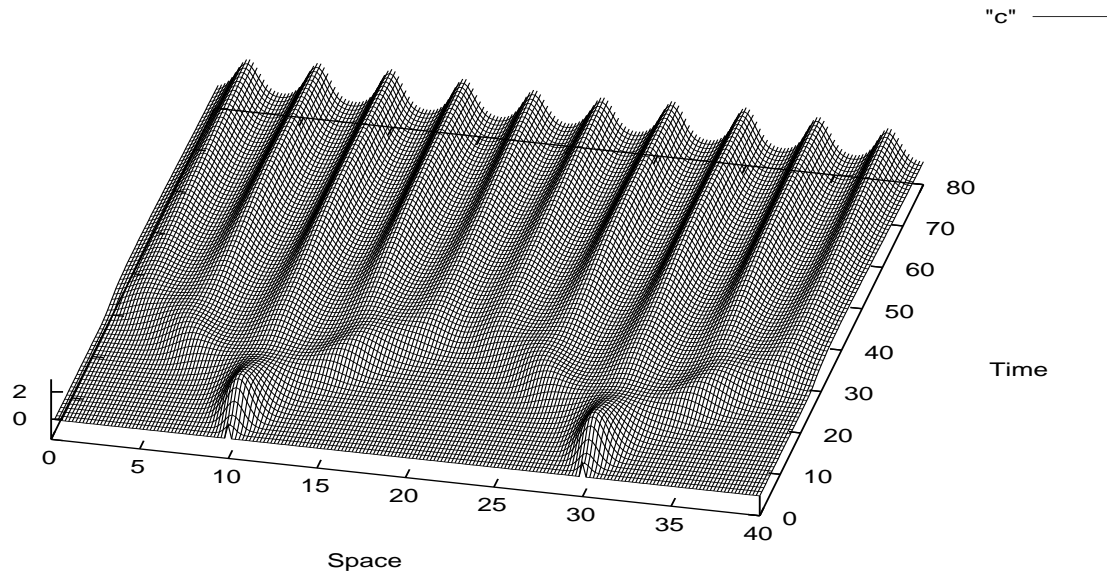


Figure 3: Evolution

For the same values of the parameters above and $d > 0.11$, the homogeneous equilibrium is stable.

We consider next the same values of parameters as for Figure 1 and the initial condition $c(0, x) = a - b$ in a small interval centered at the middle of $[0, L]$ and $c(0, x) = 0$ otherwise. At the first stage of its evolution the solution grows and diffuses slightly (Figure 2), its maximum remains at the middle of interval $[0, L]$. At the second stage the solution decreases at the center and grows near the borders of the interval. We observe here that the intra-specific competition results in appearance of two separated sub-populations symmetrically situated around the middle of $[0, L]$.

The case of a larger interval with two initially separated sub-populations is shown in Figure 3. Each of them first splits into three sub-populations. Those in the center do not change any more. The sub-populations from the sides split once more into two sub-populations each of them. These consecutive splitting into sub-populations has an interpretation related to the evolution of species. We discuss this question below.

The numerical simulations shown in Figure 4 are carried out for the same values of the parameters except for the diffusion coefficient which is smaller in this case. The consecutive sub-populations are almost disconnected here. Each new structure emerges from very small values of the concentration.

We consider finally the case where the function $\phi(y)$ is not symmetric. It is similar to that given by (6.1) but equals 0 for $y < 0$ (see Section 9). The dynamics of the solution is different in this case: the first maximum of the concentration moves to the left, then the

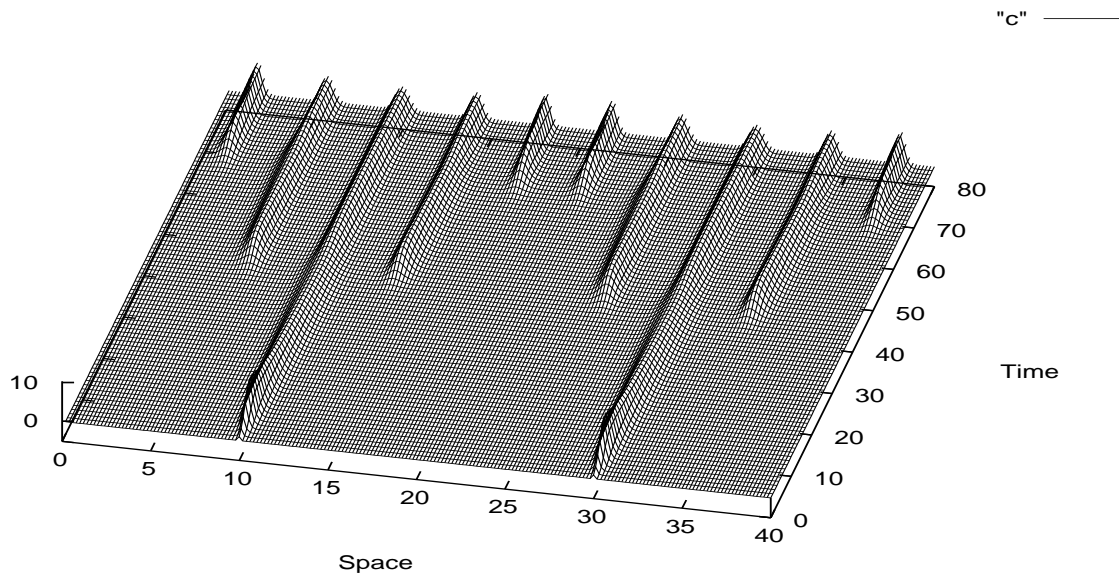


Figure 4: Small diffusion coefficient

second maximum appears and moves remaining at fixed distance from the first one, and so on (Figure 5).

8. Approximate solution

In this section we consider an approximation of equation (4.1), which is not well justified mathematically but allows us to explain some of its properties. Consider the integral in the right-hand side of this equation

$$\int_{-\infty}^{\infty} \phi(x-y)c(y)dy = \int_{-\infty}^{\infty} \phi(y)c(x-y)dy$$

(the time dependence of the function c is for brevity omitted). We will use the Taylor expansion

$$c(x-y) = c(x) - c'(x)y + \frac{1}{2}c''(x)y^2 + \dots$$

If ϕ is an even function then we obtain

$$\int_{-\infty}^{\infty} \phi(x-y)c(y)dy = c(x) + \gamma c''(x) + \dots, \quad (8.1)$$

where

$$\gamma = \frac{1}{2} \int_{-\infty}^{\infty} \phi(y)y^2 dy.$$

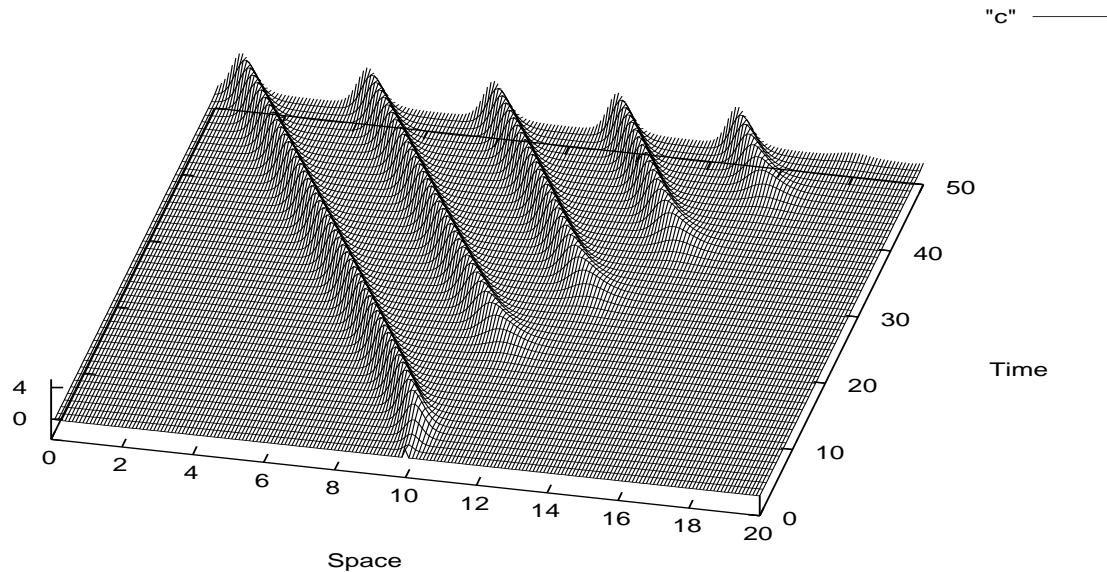


Figure 5: Asymmetric evolution

Taking only the first term in the right-hand side of expansion (8.1), we obtain the reaction-diffusion equation (4.3) instead of the integro-differential equation (4.1). Equation (4.3) is well-studied. It is known that it has a travelling wave solution, that is the solution of the form $c(x, t) = u(x - st)$, where s is the wave velocity. In fact, monotone in x waves for this equation exist for all $s \geq s_0 = 2\sqrt{d\sigma}$, where $\sigma = a - b$. If the nonlinearity $F(c)$, which in this particular case equals $c(\sigma - c)$, satisfies the condition $F'(c) \leq F'(0)$, then the minimal speed s is determined by $F'(0)$ and not by the nonlinearity itself. In this sense the minimal speed is stable with respect to the perturbation of the nonlinearity. It is also known that the solutions of the parabolic equation with localized in space initial conditions converge to the wave with the minimal velocity [8].

Consider next the two-term approximation in (8.1). We obtain the equation

$$\frac{\partial c}{\partial t} = d(1 - \gamma c) \frac{\partial^2 c}{\partial x^2} + c(\sigma - c). \quad (8.2)$$

The corresponding stationary equation

$$d(1 - \gamma c)c'' + c(\sigma - c) = 0$$

has periodic in x solutions if $b\sigma > 1$. Indeed, it can be written as the system of two first order equations:

$$c' = p, \quad p' = -\Phi(c),$$

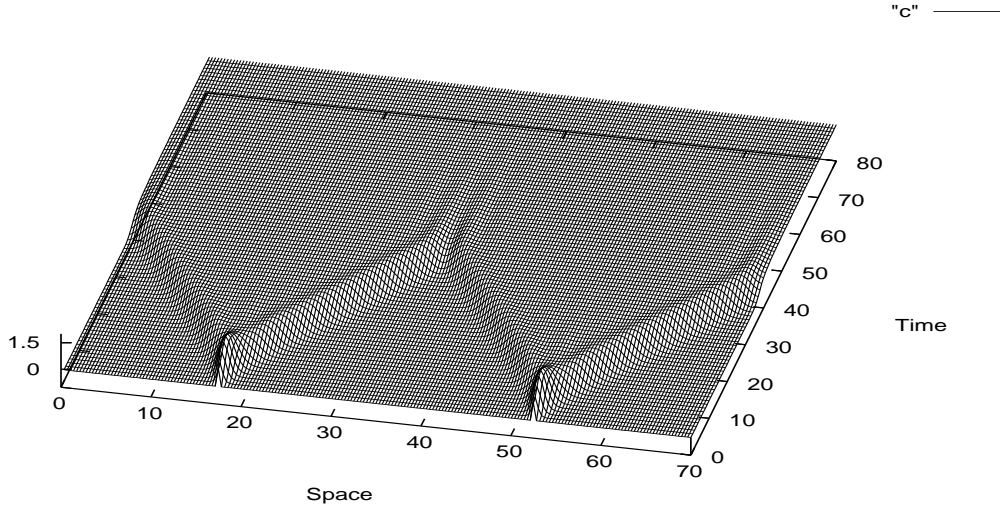


Figure 6: Stable equilibrium behind the wave

where $\Phi(c) = c(\sigma - c)/(d(1 - \gamma c))$. Since $\Phi(\sigma) = 0$, $\Phi'(\sigma) > 0$, then there exists a family of limit cycles around the stationary point $c = \sigma, p = 0$ of this system.

Thus, if $\gamma = 0$ there are travelling waves with the limits $c = 0$ and $c = \sigma$. Each of these values is a stationary solution of the evolution equation, the first one being unstable while the second one is stable. The minimal speed is determined by the linearized about $c = 0$ equation. If $\gamma \neq 0$, the same homogeneous stationary solutions exist but $c = \sigma$ can become unstable. Therefore the wave can connect the homogeneous solution $c = 0$ at one infinity with the periodic solution at another infinity. However, it cannot be done for equation (8.2) because the coefficient of the second derivative will change sign. We need to consider the complete equation (4.1). Its linearizations about $c = 0$ and about $c = \sigma$ have the same properties as for equation (8.2). Hence we can expect the existence of a periodic in time travelling wave, that is

$$c(x, t) = u(x - st, t),$$

where $u(x, t)$ is a periodic in t solution of the corresponding equation. If we assume that the minimal speed is determined by the linearized about $c = 0$ equation, as before, then it will have the same value $s_0 = 2\sqrt{d\sigma}$. For the values $d = 0.06, a = 2, b = 1$ of the parameters considered in the simulations on Figure 6, we obtain $s_0 \approx 0.48$. This result is in a good agreement with the speed of propagation found numerically.

It is interesting to compare the results on Figures 6 and 7. The values of the parameters are the same except for N which determines the width of the support of the function ϕ . In the second case (Figure 7) it is twice more than in the first case (Figure 6). In agreement with the linear stability analysis the equilibrium behind the wave is stable in the first case and unstable in the second one. However the speeds of wave propagation in both cases is the

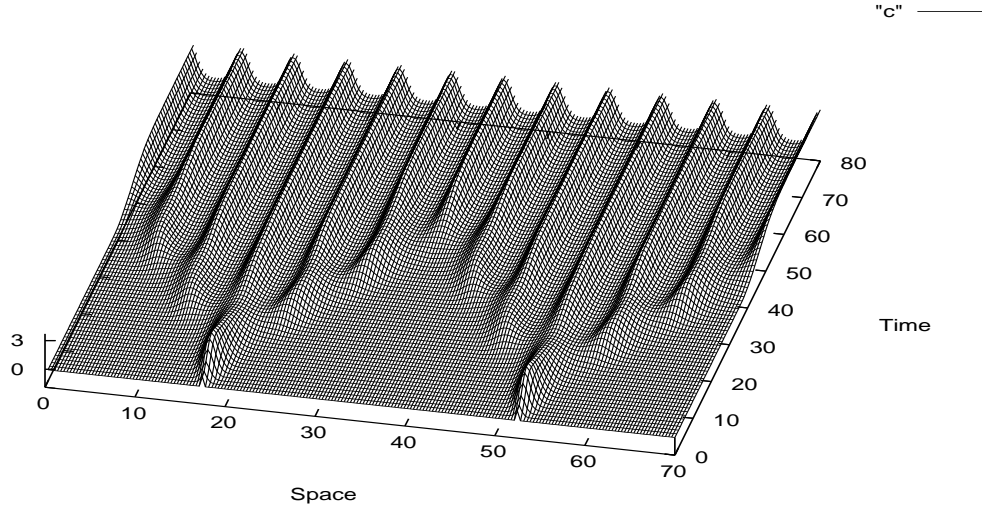


Figure 7: Periodic wave propagation

same. This confirms the assumption that the minimal speed is determined by the system linearized about $c = 0$, and that the solution converges to the wave with the minimal speed.

9. Asymmetric evolution

In Section 6 we considered the case where the function ϕ was even. Therefore its Fourier transform $\tilde{\phi}$ was a real-valued function, and the principal eigenvalue crossed the imaginary axis through the origin. On the other hand, the numerical simulations presented in Section 7 showed that behavior of solutions in the case of the asymmetric function ϕ could be different in comparison with the symmetric case. Consider for certainty the following function:

$$\phi(y) = \begin{cases} 1/N & , \quad 0 \leq y \leq N \\ 0 & , \quad \text{otherwise} \end{cases} . \quad (9.1)$$

Then

$$\tilde{\phi}(\xi) = \frac{1}{N} \int_0^N (\cos(\xi y) + i \sin(\xi y)) dy = \frac{1}{\xi N} \sin(\xi N) + \frac{i}{\xi N} (\cos(\xi N) - 1).$$

Hence the real part of the function $\Phi(\xi)$ is the same as before but the imaginary part is now different from zero. This means that the stability boundary is the same as for the symmetric function but the behavior of solutions is different.

To describe the behavior of solutions at the stability boundary consider the linearized

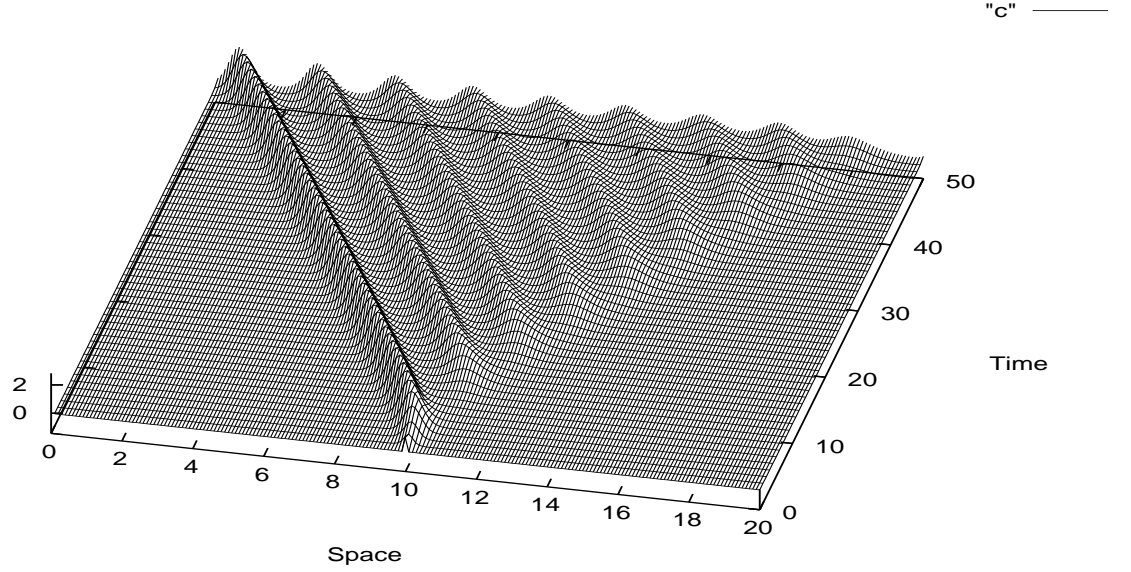


Figure 8: Asymmetric evolution

equation

$$\frac{\partial c}{\partial t} = d \frac{\partial^2 c}{\partial x^2} - \sigma \int_{-\infty}^{\infty} \phi(x-y)c(y)dy. \quad (9.2)$$

We look for its solution in the form

$$c(x, t) = \cos(\xi(x - st)).$$

Substituting it in (9.2) and separating the real and imaginary parts, we obtain

$$d\xi^2 + \sigma \int_{-\infty}^{\infty} \phi(y) \cos(\xi y) dy = 0,$$

$$\xi s = - \int_{-\infty}^{\infty} \phi(y) \sin(\xi y) dy.$$

The first equality is satisfied at the stability boundary. The second equality gives the relation between the speed s and the frequency ξ . For the function (9.1) we have

$$s = \frac{1}{\xi^2 N} (\cos(\xi N) - 1). \quad (9.3)$$

We verify this relation with the numerical simulations shown in Figure 8. The values of parameters here ($d = 0.01, \sigma = 1, N = 1.1$) are such that the homogeneous solution

is unstable but they are not far from the stability boundary ($N = 1$). The speed s of propagation equals the minimal speed $s_0 = 2\sqrt{d\sigma} = 0.2$. The value of ξ taken from the numerical results is approximately 2.85. The right-hand side in (9.3) equals approximately 0.22. Therefore this equality is approximately satisfied. We note that it is satisfied at the stability boundary but not outside it. For larger values of N the frequency of oscillations is quite different (see Figure 5, where all the parameters are the same as in Figure 8, except that $N = 2$) though the speed of propagation remains the same.

10. Discussion

In this work we study population dynamics with nonlocal consumptions of resources. We consider the conventional logistic equation with diffusion and with a nonlinear term describing reproduction and mortality of individuals in a population. The difference in comparison with the classical in the population dynamics model is that the death function depends not only on the density of the individuals at the given spatial point but also on their density in some its neighborhood. This is related to the assumption that the individuals in the population consume the resources not only at the point where they are located but also in some area around this point.

The nonlocal consumption of the resources results in appearance of spatial structures. The homogeneous equilibrium, which would be stable otherwise, becomes unstable. This is a new mechanism of pattern formations different with respect to Turing structures. As it is well known, Turing or dissipative structures are described by reaction-diffusion systems of at least two equations for two different concentrations. They are often associated with an activator and inhibitor in some chemical systems. This mechanism can be briefly described as a short range activation and a long range inhibition. Though this mechanism is often applied to describe biological pattern formation, and in some cases it gives patterns very close to those observed in reality, it remains basically phenomenological (see [9]).

The model considered in this work can show the emergence of patterns in a single population, without competition between different species. To our knowledge, it is a new effect for modelling in population dynamics. Its biological interpretation is that an intra-specific competition can result in a spatial localization of the individuals in the populations. We can suppose that formation of herds of herbivorous animals or formation of local communities in human populations, though much more complex, can be related to this mechanism.

The possibility of the appearance of spatial structures depends on the function $\phi(y)$. In particular, the piece-wise constant function introduced in Section 6 can lead to the instability but not the error function (Section 5). Let us discuss a possible biological meaning of the function (6.1). Consider an individual with his average location at $y = 0$ where he has his family life (reproduction). He consumes resources during the day and returns to the family during the night. Suppose that he needs 8 hours per day to consume the sufficient amount of resources and that he can spend 12 hours per day outside the nest. Then he has 2 hours to go to his work (consumption) place and 2 hours to return back. If we neglect the

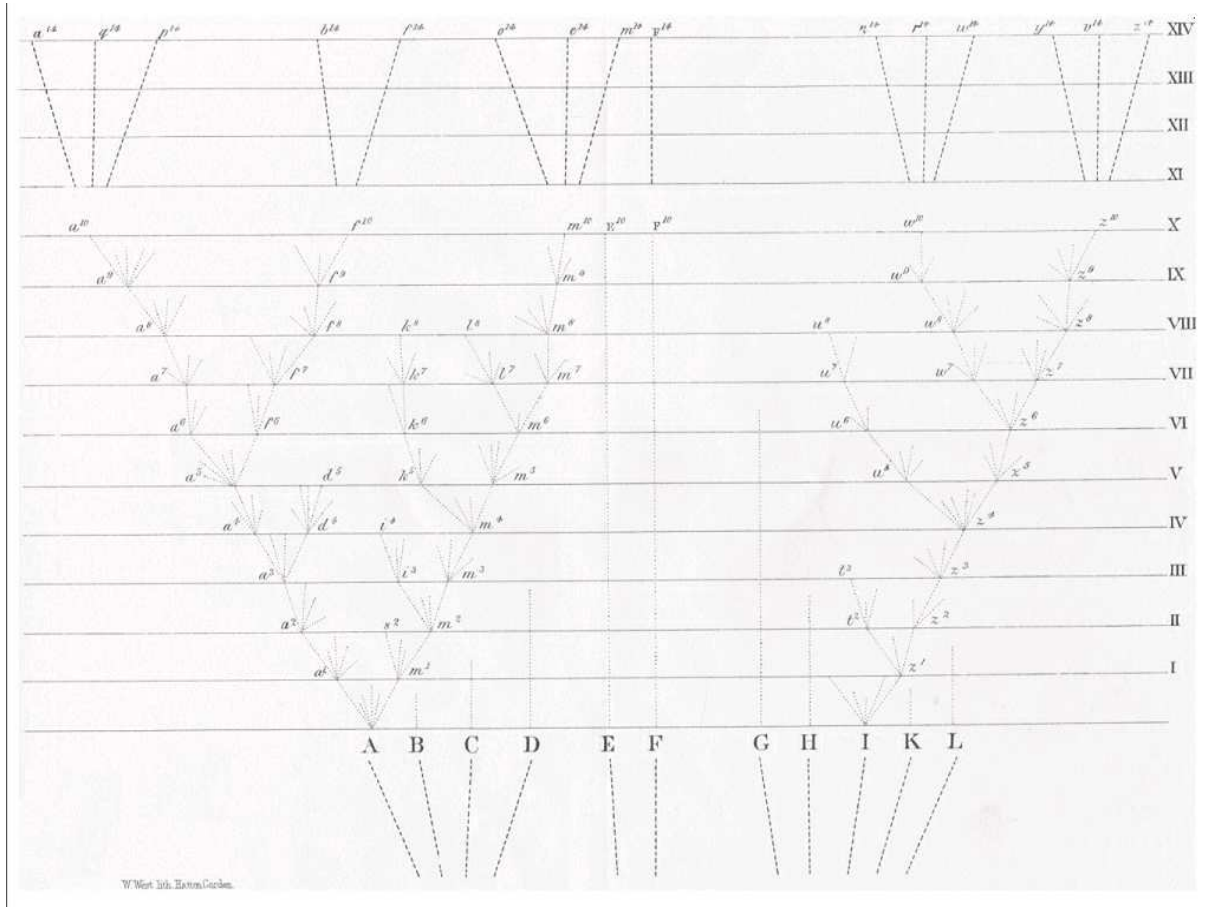


Figure 9: Evolution of species according to Darwin

cost of the displacement and if we assume that the working places are equally distributed, then he will go with a constant probability to any place in the two hours distance from the nest but not further than that. This gives us the piece-wise constant distribution (6.1). If the diffusion coefficient in this case is sufficiently small, then a nonhomogeneous spatial distribution will emerge. We should distinguish here a fast motion home-work, which is considered as instantaneous displacement, and a slow motion due to diffusion. The latter is in fact a displacement of the nest. For example, it can be a relatively slow motion to move the home closer to the work place. The characteristic time of this motion can be related to the development of the infrastructure and of other factors. If the diffusion coefficient is large, then the spatial structure does not appear and the homogeneous equilibrium remains stable. In human populations it can result in appearance of big equally populated areas (e.g. Chicago area in the USA).

On the other hand, if the cost of the displacement is high, then $\phi(y)$ will decrease when $|y|$ increases. If the influence of this factor is sufficiently strong, then the population will also remain equally distributed though for another reason: to stay close to the consumption

place.

Another context where the model considered in this work can be applied is evolution of species (see Section 3). In this case the space variable does not correspond to the physical space anymore but to the morphological space. Consider some morphological feature, for example, the size of bird's beak and the resources related to this feature. It can be grains of different sizes that birds consume. This brings us to the same piece-wise constant function ϕ as before. By diffusion in this case we understand a slow change of the beak size from one generation to another due to random mutations or due to some other factors. The intra-specific competition for resources can result in the splitting of the population into one or several sub-populations (see Figures 2, 3) that can be considered as new species. If the diffusion coefficient is sufficiently small, then the new species emerge quickly in time and they are not connected to the previous species (Figure 4). This can be an explanation of the fact that transient forms in the evolution of species are not known.

It is interesting to note that Figure 3 looks very close to the schematic representation of evolution given by Darwin in his "Origin of species" (see [10], pages 116, 117).

Let us discuss finally the simulations shown in Figure 5. The function ϕ is not symmetric in this case. The biological interpretation of this assumption is that there is a preferential direction in the consumption of the resources. It can be related for example to a dominant direction of wind in the case of insects or to some other environmental or social factors (e.g. preferential transfer of jobs to the East and of workers to the West). In the evolution context it can be some asymmetry of morphological features. For example, if an animal can easier bent down to look for food than to stretch up it can result in appearance of species of a higher height.

References

1. G. Edelman, J. Gally. Degeneracy and complexity in biological systems. Proceedings of the National Academy of Sciences, 98 (2001), No. 24, 13763-13768.
2. J.J. Kupiec, P. Sonigo. Ni Dieu ni gène. Pour une autre théorie de l'hérédité. Seuil, Paris, 2000.
3. S. Atamas. Self-organization in computer simulated selective systems. Biosystems, 39 (1996), 143-151.
4. J. Coville, L. Dupaigne. Propagation speed of travelling fronts in non local reaction-diffusion equations. Nonlinear Anal. 60 (2005), No. 5, 797-819.
5. C. Prevost. Application des EDP aux problèmes de dynamique des populations et traitement numérique. PHD, Université d'Orleans, 2004.
6. L. Desvillettes, C. Prevost, R. Ferrieres. Infinite Dimensional Reaction-Diffusion for Population Dynamics. Preprint n. 2003-04 du CMLA, ENS Cachan.
7. Yu. M. Svirizhev. Nonlinear waves, dissipative structures, and disasters in ecology. Nauka, Moscow, 1987.
8. A. Volpert, Vit. Volpert, Vl. Volpert. Traveling wave solutions of parabolic systems.

Translation of Mathematical Monographs, Vol. 140, Amer. Math. Society, Providence, 1994.

9. L. Wolpert. Principles of development. Second Edition. Oxford University Press, Oxford, 2002.

10. C. Darwin. On the origin of species by means of natural selection. John Murray, London, 1859. [1st edn].