



**HAL**  
open science

## Orbitwise countings in $H(2)$ and quasimodular forms

Samuel Lelièvre, Emmanuel Royer

► **To cite this version:**

Samuel Lelièvre, Emmanuel Royer. Orbitwise countings in  $H(2)$  and quasimodular forms. *International Mathematics Research Notices*, 2006, 2006, Article ID 42151, 30 p. [⟨10.1155/IMRN/2006/42151⟩](https://doi.org/10.1155/IMRN/2006/42151). [⟨hal-00008577v2⟩](https://hal.science/hal-00008577v2)

**HAL Id: hal-00008577**

**<https://hal.science/hal-00008577v2>**

Submitted on 2 Apr 2006

**HAL** is a multi-disciplinary open access archive for the deposit and dissemination of scientific research documents, whether they are published or not. The documents may come from teaching and research institutions in France or abroad, or from public or private research centers.

L'archive ouverte pluridisciplinaire **HAL**, est destinée au dépôt et à la diffusion de documents scientifiques de niveau recherche, publiés ou non, émanant des établissements d'enseignement et de recherche français ou étrangers, des laboratoires publics ou privés.



HAL Authorization

# ORBITWISE COUNTINGS IN $\mathcal{H}(2)$ AND QUASIMODULAR FORMS

SAMUEL LEIÈVRE AND EMMANUEL ROYER

ABSTRACT. We prove formulae for the countings by orbit of square-tiled surfaces of genus two with one singularity. These formulae were conjectured by Hubert & Lelièvre. We show that these countings admit quasimodular forms as generating functions.

## CONTENTS

1. Introduction	1
2. Geometric background	3
3. Sum-type formulae for the orbitwise countings	8
4. Quasimodular forms	11
5. Proof of Hubert & Lelièvre conjecture	17
6. The associated Fourier series	22
References	23

## 1. INTRODUCTION

The main result of this paper is the proof of a conjecture of Hubert & Lelièvre.

**Theorem 1.** *For odd  $n$ , the countings by orbit of primitive square-tiled surfaces of the stratum  $\mathcal{H}(2)$  tiled with  $n$  squares are the following. Orbit  $A_n$  contains*

$$a_n^p = \frac{3}{16}(n-1)n^2 \prod_{p|n} \left(1 - \frac{1}{p^2}\right)$$

*primitive surfaces with  $n$  squares and orbit  $B_n$  contains*

$$b_n^p = \frac{3}{16}(n-3)n^2 \prod_{p|n} \left(1 - \frac{1}{p^2}\right)$$

*primitive surfaces with  $n \geq 3$  squares and 0 for  $n = 1$  square.*

*Remark.* The notation  $\prod_{p|n}$  indicates a product over prime divisors of  $n$ . The superscript  $p$  is here to emphasize primitivity.

Theorem 1 can also be expressed in terms of quasimodularity of the generating functions of the countings. More precisely:

---

*Date:* April 2006.

*2000 Mathematics Subject Classification.* 32G15 05A15 11F11 11F23 30F30 14H55.

*Key words and phrases.* Teichmüller discs, square-tiled surfaces, Weierstrass points, quasimodular forms.

**Corollary 2.** *For any odd positive integer  $n$ , the number  $a_n$  of  $n$ -square-tiled surfaces of type A in  $\mathcal{H}(2)$ , primitive or not, is the  $n$ th coefficient of the quasimodular form*

$$\sum_{n=0}^{+\infty} a_n \exp(2i\pi n z) = \frac{1}{1280} \left[ E_4(z) + 10 \frac{d}{2i\pi dz} E_2(z) \right]$$

of weight 4, depth 2 on  $\mathrm{SL}(2, \mathbb{Z})$ .

*Remark.* Functions  $E_2$  and  $E_4$  are the usual Eisenstein series of weight 2 and 4 respectively. They are precisely defined in equations (3) and (7).

Since the coefficients  $a_n$  have no geometric meaning for even  $n$ , it makes sense to consider only the odd part of the Fourier series. Considering the odd part is the same as considering the Fourier series twisted by a Dirichlet character of modulus 2 (see section 4.4). It is then natural to expect that, similarly to the case of modular forms (see [Iwa97, Theorem 7.4]), the odd part of the Fourier series is a quasimodular form on the congruence subgroup  $\Gamma_0(4)$ . Actually, we will prove this is the case. Let  $\Phi_2$  and  $\Phi_4$  be the two modular forms of respective weights 2 and 4, defined on  $\Gamma_0(4)$  as in (8) and (9).

**Theorem 3.** *The Fourier series*

$$\sum_{n \in 2\mathbb{Z}_{>0}+1} a_n \exp(2i\pi n z)$$

is the quasimodular form of weight 4 and depth 1 on  $\Gamma_0(4)$  defined by

$$\frac{1}{1280} \left[ E_4(z) - 9E_4(2z) + 8E_4(4z) - 15 \frac{d}{2i\pi dz} \Phi_2(z) + 15 \frac{d}{2i\pi dz} \Phi_4(z) \right].$$

*Remark.* This theorem will be proved in section 6. It is interesting to note that forgetting the artificial terms of even order results in a lesser depth, that is, in a simplified modular situation. (A modular form is a quasimodular form of depth 0 so the depth may be seen as a measure of complexity.)

$n$	5	7	9	11	13	15	17	19	21	23	25	27
$a_n^p$	18	54	108	225	378	504	864	1215	1440	2178	2700	3159
$a_n$	18	54	120	225	378	594	864	1215	1680	2178	2808	3630

TABLE 1. Number of surfaces of type A.

Our results may be interpreted in terms of counting genus 2 covers of the torus  $\mathbf{T} = \mathbb{C}/\mathbb{Z} + i\mathbb{Z}$  with one double ramification point (see §2). The general problem of counting covers with fixed ramification type of a given Riemann surface was posed in 1891 by Hurwitz who precisely counted the covers of the sphere. In 1995, Dijkgraaf [Dij95] computed the generating series of the countings of degree  $n$  and genus  $g$  covers of  $\mathbf{T}$  with simple ramification over distinct points, weighted by the inverse of the number of automorphisms. Kaneko & Zagier [KZ95] introduced the notion of quasimodular forms and proved that the generating series computed by Dijkgraaf

was quasimodular of weight  $6g - 6$  on  $SL(2, \mathbb{Z})$ . The case of arbitrary ramification over a single point was studied by Bloch & Okounkov [BO00]. They proved that the countings lead to linear combinations of quasimodular forms of weight less than or equal to  $6g - 6$ . This was used by Eskin & Okounkov [EO01] to compute volumes of the strata of moduli spaces of translation surfaces (see also [Zor02]). The  $SL(2, \mathbb{Z})$  orbits of square-tiled surfaces were studied by Hubert & Lelièvre in the case of a prime number of squares [HL06] and by McMullen [McM05] in the general case.

Up to a multiplicative constant factor, our counting functions are the orbifold Euler characteristics of Teichmüller curves. Matt Bainbridge independently obtained results similar to ours in this setting.

The moduli space of holomorphic 1-forms on complex curves of a fixed genus  $g$  can be considered as a family of flat structures of a special type on a surface of genus  $g$ . The group  $GL(2, \mathbb{R})$  acts naturally on the moduli space; its orbits, called Teichmüller discs, project to the moduli space of curves as complex geodesics for the Teichmüller metric. A typical flat surface has no symmetry; its stabilizer in  $GL(2, \mathbb{R})$  is trivial; the corresponding Teichmüller disc is dense in the moduli space. For some flat surfaces (called Veech surfaces) the stabiliser is big (a lattice) so that the corresponding Teichmüller disc is closed. Projections of such Teichmüller discs, called Teichmüller curves, play the role of “closed complex geodesics”.

The main lines of the proof of theorem 1 are the following. In section 3, we evaluate the number  $a_n^p$  in terms of sums over sets defined by complicated arithmetic conditions. In section 5, we relate these coefficients  $a_n^p$  to sums of sums of divisors of the form

$$\sum_{\substack{(a,b) \in \mathbb{Z}_{>0}^2 \\ ka+b=n}} \sigma_1(a)\sigma_1(b).$$

For the computation of these sums, we use, in section 4, the notion of quasimodular forms on congruence subgroups (introduced by Kaneko & Zagier in [KZ95]) and we take advantage of the fact that the spaces of quasimodular forms have finite dimension to linearise the above sums. Here, linearising means expressing them as linear combinations of sums of powers of divisors. Having obtained a series whose odd coefficients are the numbers  $a_n$ , we introduce the notion of twist of a quasimodular form by a Dirichlet character, to construct a new quasimodular form generating series without artificial Fourier coefficients.

**Thanks** A first version of this text was written as both authors were visiting the Centre de Recherches Mathématiques de Montréal, and circulated under the title “Counting integer points by Teichmüller discs in  $\Omega\mathcal{M}(2)$ ”. This version was written as the second author was visiting the Warwick Mathematics Institute. We thank both institutions for the good working conditions.

## 2. GEOMETRIC BACKGROUND

**2.1. Square-tiled surfaces.** A square-tiled surface is a collection of unit squares endowed with identifications of opposite sides: each top side is identified to a bottom side and each right side is identified to a left side. In

addition, the resulting surface is required to be connected. A square-tiled surface tiled by  $n$  squares is also a degree  $n$  (connected) branched cover of the standard torus  $\mathbb{C}/\mathbb{Z} + i\mathbb{Z}$  with a single branch point.

Given a square-tiled surface, to each vertex can be associated an angle which is a multiple of  $2\pi$  (four or a multiple of four squares can abutt at each vertex). If  $(k_i + 1)2\pi$  is the angle at vertex  $i$ , the Gauss–Bonnet formula implies that

$$\sum_{i=1}^s k_i = 2g - 2$$

where  $g$  is the genus of the surface and  $s$  the total number of vertices.

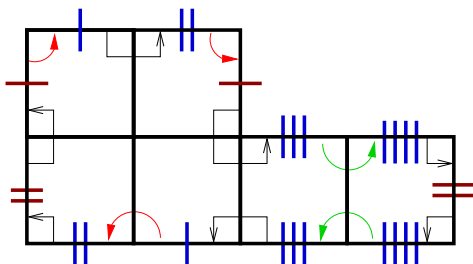


FIGURE 1. Surface with one angle of  $6\pi$

Surfaces can be sorted according to strata  $\mathcal{H}(k_1, \dots, k_s)$ . Square-tiled surfaces are integer points of these strata. In this paper we are concerned with surfaces in  $\mathcal{H}(2)$ , that is, with a single ramification point of angle  $6\pi$ . A surface tiled by  $n$  squares in  $\mathcal{H}(2)$  is a degree  $n$  branched cover of the torus  $\mathbb{C}/\mathbb{Z} + i\mathbb{Z}$  with one double ramification point.

**2.2. Cylinder decompositions.** Given any square-tiled surface, each horizontal line on the surface through the interior of a square is closed, and neighbouring horizontal lines are also closed. Thus closed horizontal lines come in families forming cylinders and the surface decomposes into such cylinders bounded by horizontal saddle connections (segments joining conical singularities).

Here we explain how to enumerate square-tiled surfaces in  $\mathcal{H}(2)$  with a given number of squares, by giving a system of coordinates for them. We include this discussion for the sake of completeness, although these coordinates have already been used in [Zor02], [EMS03], [HL06].

We represent surfaces according to their cylinder decompositions. Cylinders of a square-tiled surface are naturally represented as rectangles. One can cut a triangle from one side of such a rectangle and glue it back on the other side according to the identifications to produce a parallelogram with a pair of horizontal sides (each made of one or several saddle connections), and a pair of identified nonhorizontal parallel sides. A square-tiled surface in  $\mathcal{H}(2)$  has one or two cylinders [Zor02] and can always be represented as in figure 3 or 4. Each cylinder has a height and a width and in addition a twist parameter corresponding to the possibility of rotating the saddle connections of the top or bottom of the cylinders before performing the identifications.

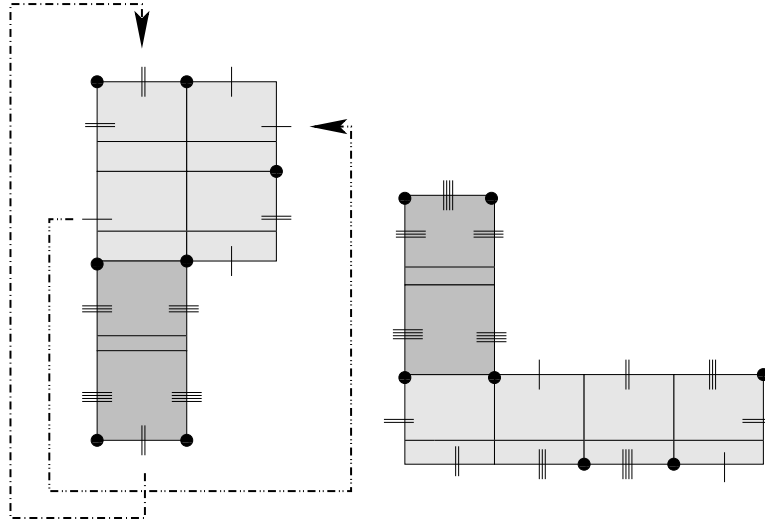


FIGURE 2. Decomposition of a surface into two cylinders

**2.3. One-cylinder surfaces.** For one-cylinder surfaces in  $\mathcal{H}(2)$ , we have on the bottom of the cylinder three horizontal saddle connections, and the same saddle connections appear on the top of the cylinder in reverse order; we denote by  $\ell$  the width of the cylinder and  $\ell_1, \ell_2, \ell_3$  the lengths of the saddle connections, numbered so that they appear in that order on the bottom side and in reverse order on the top side. See figure 3.

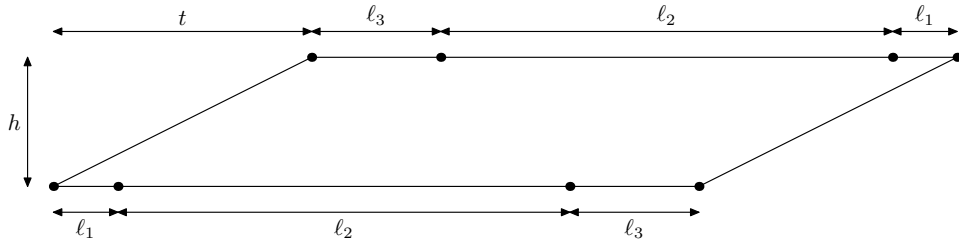


FIGURE 3. One-cylinder surface

For each choice of  $(\ell_1, \ell_2, \ell_3)$  with  $\ell_1 + \ell_2 + \ell_3 = n$ , if  $\ell_1, \ell_2, \ell_3$  are not all equal, there are  $\ell$  possible values of the twist  $t$  giving different surfaces. But, the three possible cyclic permutations of  $(\ell_1, \ell_2, \ell_3)$  yields the same set of surfaces. So, to make coordinates uniquely defined, we require that  $(\ell_1, \ell_2, \ell_3)$  has least lexicographic order among its cyclic permutations. For countings, it is simpler to ignore this point and to divide by 3 at the end.

If  $\ell_1, \ell_2, \ell_3$  are all equal (and thus worth  $\ell/3$ ), there is only one cyclic permutation of  $(\ell_1, \ell_2, \ell_3)$  but only  $\ell/3$  values of the twist  $t$  give different surfaces.

The parameters we have used satisfy:

$$\begin{aligned} \ell &| n \\ \ell_1 + \ell_2 + \ell_3 &= \ell \\ 0 \leq t &< \ell \text{ or } \ell/3. \end{aligned}$$

*Remark.* From this description of coordinates, we conclude that the number of one-cylinder surfaces in  $\mathcal{H}(2)$  tiled with  $n$  squares is (see [EMS03])

$$\frac{1}{3} \sum_{\ell|n} \sum_{\substack{(\ell_1, \ell_2, \ell_3) \in \mathbb{Z}_{>0}^3 \\ \ell_1 + \ell_2 + \ell_3 = \ell}} \ell.$$

**2.4. Two-cylinder surfaces.** Given a two-cylinder surface in  $\mathcal{H}(2)$ , one of its cylinders (call it cylinder 1) has one saddle connection on the top and one saddle connection (of same length) on the bottom, while the other one (call it cylinder 2) is bounded by two saddle connections on the top and two saddle connections on the bottom. See figure 4.

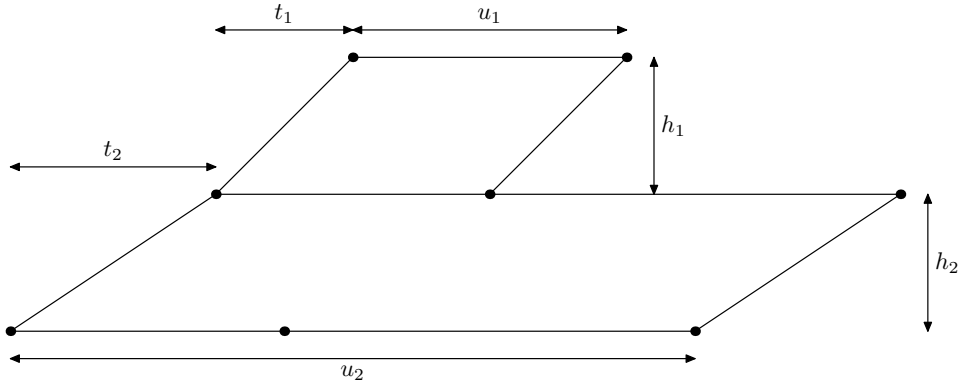


FIGURE 4. Two-cylinder surface

For each of cylinders 1 and 2, there are three parameters: the height  $h_i$ , the width  $u_i$ , the twist  $t_i$ .

Given two heights  $h_1$  and  $h_2$ , two widths  $u_1 < u_2$ , and two twists  $t_1, t_2$  with  $0 \leq t_i < u_i$ , there exists a unique surface in  $\mathcal{H}(2)$  with two cylinders having  $(h_1, h_2, u_1, u_2, t_1, t_2)$  as parameters. The number of squares is then  $h_1 u_1 + h_2 u_2$ .

*Remark.* From this system of coordinates one deduces (see [EMS03]) that the number of two-cylinder surfaces in  $\mathcal{H}(2)$  tiled by  $n$  squares is

$$\sum_{\substack{(h_1, h_2, u_1, u_2) \in \mathbb{Z}_{>0}^4 \\ u_1 < u_2 \\ h_1 u_1 + h_2 u_2 = n}} u_1 u_2.$$

**2.5. Lattice of periods.** The lattice of periods of a square-tiled surface is the rank two sublattice of  $\mathbb{Z}^2$  generated by its saddle connections.

**Lemma 4.** *A square-tiled surface is translation-tiled by a parallelogram if and only if this parallelogram is a fundamental domain for a lattice containing the surface's lattice of periods.*

*Proof.* Decompose the surface into polygons with vertices at the conical singularities. The sides of these polygons are saddle connections and together generate the lattice of periods. The tiling of the plane by parallelograms which are a fundamental domain for this lattice (or any rank two lattice

of the plane containing it) yields a tiling of the translation surface by such parallelograms.  $\square$

*Remark.* The previous lemma implies that the area of the lattice of periods divides the area of the surface it comes from.

We will describe the basis of the lattice of periods by use of the following lemma [Ser77, Chapitre 7].

**Lemma 5.** *Let  $\Lambda$  be a sublattice of  $\mathbb{Z} + i\mathbb{Z}$  of index  $d$ . Then there exists a unique triple of integers  $(a, t, h)$  with  $a \geq 1$ ,  $ah = d$  and  $0 \leq t \leq a - 1$  such that*

$$\Lambda = (a, 0)\mathbb{Z} \oplus (t, h)\mathbb{Z}.$$

*Remark.* Let  $S$  be a square-tiled surface in  $\mathcal{H}(2)$ , and let  $\begin{pmatrix} a & t \\ 0 & h \end{pmatrix}$  be the matrix corresponding to its lattice of periods. If  $S$  is one cylinder then  $h$  is the height of its unique cylinder ; if  $S$  is two-cylinder, with cylinders of height  $h_1$  and  $h_2$ , then  $h = (h_1, h_2)$ .

**Definition 6.** *A square-tiled surface is called primitive if its lattice of periods is  $\mathbb{Z}^2$ , in other words if  $\begin{pmatrix} a & t \\ 0 & h \end{pmatrix} = \begin{pmatrix} 1 & 0 \\ 0 & 1 \end{pmatrix}$ .*

**Definition 7.** *A square-tiled surface is called primitive in height if  $h = 1$ .*

The linear action of  $GL(2, \mathbb{Q})^+$  on  $\mathbb{R}^2$  induces an action of  $GL(2, \mathbb{Q})^+$  on square-tiled surfaces. This action preserves orientation. The action of  $SL(2, \mathbb{Z})$  preserves the number of square tiles, and preserves primitivity.

Hubert & Lelièvre have shown that if  $n \geq 5$  is prime, the square-tiled surfaces in  $\mathcal{H}(2)$  tiled with  $n$  squares (necessarily primitive since  $n$  is prime) form into two orbits under  $SL(2, \mathbb{Z})$ , denoted by  $A_n$  and  $B_n$ .

If  $n$  is not prime and  $n \geq 6$ , not all surfaces tiled by  $n$  squares are primitive, and if  $n$  has many divisors these surfaces split into many orbits under  $SL(2, \mathbb{Z})$ , most of them lying in orbits under  $GL(2, \mathbb{Q})^+$  of primitive square-tiled surfaces with fewer squares. There can be an arbitrary number of such ‘‘artificial’’  $SL(2, \mathbb{Z})$ -orbits. Artificial orbits consist only of nonprimitive square-tiled surfaces, since the action of  $SL(2, \mathbb{Z})$  preserves primitivity.

Let  $n$  be an odd integer. We can distinguish two types of surfaces among surfaces tiled by  $n$  squares in  $\mathcal{H}(2)$ . These two types are distinguished by Weierstrass points, as follows (see [HL06]).

On a surface in  $\mathcal{H}(2)$ , the matrix  $\begin{pmatrix} -1 & 0 \\ 0 & -1 \end{pmatrix}$  induces an involution which can be shown to have six fix points, called the Weierstrass points of the surface. It is easy to show that for a square-tiled surface these points have coordinates in  $\frac{1}{2}\mathbb{Z}$ . The type invariant is determined by the number of Weierstrass points which have both their coordinates integer:

- a surface is of type A if it has one integer Weierstrass point;
- a surface is of type B if it has three integer Weierstrass points.

*Remark.* We give an interpretation in terms of orbits. Consider the orbit under  $GL(2, \mathbb{Q})^+$  of a surface  $S$  tiled by  $n$  squares. Then

- the primitive square-tiled surfaces in this orbit all have the same number of squares, say  $d$ ,
- the action of  $GL(2, \mathbb{Q})^+$  restricts to an action of  $SL(2, \mathbb{Z})$  on these primitive square-tiled surfaces;

- these primitive surfaces form an orbit under  $\mathrm{SL}(2, \mathbb{Z})$ ;
- McMullen extended the result of Hubert & Lelièvre by showing that if  $d \geq 5$  is odd, the set of primitive square-tiled surfaces in  $\mathcal{H}(2)$  tiled with  $d$  squares is partitioned in two orbits under  $\mathrm{SL}(2, \mathbb{Z})$  denoted  $A_d$  and  $B_d$ ;
- the type can be read on these primitive square-tiled surfaces.

### 3. SUM-TYPE FORMULAE FOR THE ORBITWISE COUNTINGS

**3.1. From primitive to non primitive countings.** In this section, we establish relations between countings of primitive surfaces, countings of height primitive surfaces and countings of (non necessarily primitive) surfaces. For any integer  $\ell$ , the function  $\sigma_\ell$  is defined by

$$(1) \quad \sigma_\ell(n) = \begin{cases} \sum_{d|n} d^\ell & \text{if } n \in \mathbb{Z}_{>0} \\ 0 & \text{otherwise.} \end{cases}$$

For  $n \in \mathbb{Z}_{>0}$ , we define  $E_n$  as the set of  $n$  squares surfaces in  $\mathcal{H}(2)$ ,  $E_n^{\mathrm{P}}$  as its subset of primitive surfaces and  $E_n^{\mathrm{ph}}$  as its subset of primitive in height surfaces. For  $d \in \mathbb{Z}_{>0}$ , we note  $\Lambda_d$  the set of sublattices of  $\mathbb{Z} + i\mathbb{Z}$  of index  $d$ . The description of surfaces by primitive surfaces is given by the following lemma.

**Lemma 8.** *For  $n \in \mathbb{Z}_{>0}$ , we have the following bijection*

$$E_n \simeq \bigcup_{d|n} E_{n/d}^{\mathrm{P}} \times \Lambda_d.$$

*Proof.* Let  $S \in E_n$  and  $d$  be the index in  $\mathbb{Z} + i\mathbb{Z}$  of its lattice of periods  $\mathrm{Per}(S)$ . Then  $d \mid n$  and  $\mathrm{Per}(S) \in \Lambda_d$ . With the notations of lemma 5, we write  $\mathrm{Per}(S) = (a, 0)\mathbb{Z} \oplus (t, h)\mathbb{Z}$ . To  $S$  we associate a surface tiled by  $n/d$  squares:

$$S' = \begin{pmatrix} a & t \\ 0 & h \end{pmatrix}^{-1} S.$$

The lattice of periods of  $S'$  is  $\mathbb{Z} + i\mathbb{Z}$  so that it is primitive. Conversely, let  $S' \in E_{n/d}^{\mathrm{P}}$  and  $\Lambda \in \Lambda_d$ . With the notations of lemma 5, we write  $\Lambda = (a, 0)\mathbb{Z} \oplus (t, h)\mathbb{Z}$ . Then

$$S = \begin{pmatrix} a & t \\ 0 & h \end{pmatrix} S'$$

has  $n = ah$  squares. □

**Corollary 9.** *For  $n \in \mathbb{Z}_{>0}$ , we have*

$$\#E_n = \sum_{d|n} \sigma_1(d) \#E_{n/d}^{\mathrm{P}}.$$

*Proof.* By lemma 5, we have

$$\#\Lambda_d = \sum_{\substack{(a,t,h) \in \mathbb{Z}_{\geq 0}^3 \\ ah=d \\ 0 \leq t < a}} 1 = \sigma_1(d).$$

□

We recall that a surface  $S$  is primitive in height if  $h = 1$  with the notations of lemma 5. That is, its lattice of periods is  $\text{Per}(S) = (a, 0)\mathbb{Z} + (t, 1)\mathbb{Z}$  with  $a \geq 1$  and  $0 \leq t \leq a - 1$ . We write  $\Lambda'_d$  for the set of these lattices having index  $d$  (implying  $d = a$ ). We have  $\#\Lambda'_d = d$ . Similar to lemma 8 we have

**Lemma 10.** *For  $n \in \mathbb{Z}_{>0}$ , we have the following bijection*

$$E_n \simeq \bigcup_{d|n} E_{n/d}^{\text{ph}} \times \Lambda'_d.$$

**Corollary 11.** *For  $n \in \mathbb{Z}_{>0}$ , we have*

$$\#E_n = \sum_{d|n} d \cdot \#E_n^{\text{ph}}.$$

We deduce the same result for surfaces of type A. For odd  $n$ , define  $A'_n$  as the set of  $n$ -square-tiled surfaces of type A in  $\mathcal{H}(2)$ ,  $A_n^{\text{p}}$  as its subset of primitive surfaces (which coincides with the  $\text{SL}(2, \mathbb{Z})$ -orbit  $A_n$ ) and  $A_n^{\text{ph}}$  as its subset of height-primitive surfaces.

**Lemma 12.** *For  $n \in \mathbb{Z}$  odd, we have the following bijection*

$$A'_n \simeq \bigcup_{d|n} A_{n/d}^{\text{p}} \times \Lambda_d.$$

*Proof.* We recall that the type of a surface is characterized by the number of its Weierstrass points with integer coordinates. To deduce lemma 12 from lemma 8 it then suffices to prove that a Weierstrass point  $P$  has half-integer coordinates<sup>1</sup> in a basis determined by  $\text{Per}(S)$  if and only if its image by the bijection of lemma 8 has half-integer coordinates in the canonical basis of  $\mathbb{Z} + i\mathbb{Z}$ . Let  $S \in E_n$ ,  $\text{Per}(S) = (a, 0)\mathbb{Z} \oplus (t, h)\mathbb{Z}$  its lattice of periods with the notations of lemma 5. We set

$$M = \begin{pmatrix} a & t \\ 0 & h \end{pmatrix}.$$

Let  $P$  a Weierstrass point in  $S$ , we assume that its coordinates in the basis of  $\text{Per}(S)$  are  $(\ell/2, m/2)$  with  $m$  and  $n$  not simultaneously even. The coordinates of  $P$  in  $\mathbb{Z} + i\mathbb{Z}$  are therefore  $(a\ell + mt, mh)/2$ , hence, those of  $M^{-1}P$  in  $M^{-1}S$  are  $(\ell/2, m/2)$  in the standard basis of  $\mathbb{Z} + i\mathbb{Z}$ .  $\square$

**Corollary 13.** *For  $n \in \mathbb{Z}_{>0}$ , we have*

$$a_n = \sum_{d|n} \sigma_1(d) a_{n/d}^{\text{p}}.$$

**Lemma 14.** *For  $n \in \mathbb{Z}$  odd, we have the following bijection*

$$A'_n \simeq \bigcup_{d|n} A_{n/d}^{\text{ph}} \times \Lambda'_d.$$

**Corollary 15.** *For  $n \in \mathbb{Z}_{>0}$ , we have*

$$a_n = \sum_{d|n} d a_{n/d}^{\text{ph}}.$$

---

<sup>1</sup>Meaning in  $\frac{1}{2}\mathbb{Z}^2$  but not in  $\mathbb{Z}^2$

To express the number of primitive surfaces in terms of the numbers of primitive in height ones, we recall some basic facts on  $L$ -functions. For an arithmetic function  $f$ , we define

$$L(f, s) = \sum_{n=1}^{+\infty} f(n)n^{-s}.$$

If  $\text{id}$  denotes the identity function, we have

$$L(\text{id}^\ell f, s) = L(f, s - \ell).$$

For  $f$  and  $g$  two arithmetic functions with convolution product  $f * g$ , we have

$$L(f * g, s) = L(f, s)L(g, s).$$

The constant equal to 1 function is denoted by  $\mathbb{1}$  and, we have

$$L(\mathbb{1}, s) = \zeta(s)$$

the Riemann  $\zeta$  function. Moreover

$$L(\mu, s) = \frac{1}{\zeta(s)} \text{ and } L(\sigma_k, s) = \zeta(s)\zeta(s - k).$$

**Lemma 16.** *Let  $n \in \mathbb{Z}_{>0}$ . Then*

$$a_n^{\text{P}} = \sum_{d|n} \mu(d)a_{n/d}^{\text{Ph}}.$$

*Proof.* Lemma 14 is then

$$L(a_n, s) = \zeta(s - 1)L(a^{\text{Ph}}, s)$$

and lemma 12 is

$$L(a_n, s) = \zeta(s)\zeta(s - 1)L(a^{\text{P}}, s).$$

We deduce

$$L(a^{\text{P}}, s) = \frac{1}{\zeta(s)}L(a^{\text{Ph}}, s)$$

hence the result.  $\square$

Next, we give sum-type formulae for the number of surfaces in  $A_n^{\text{Ph}}$ .

**Proposition 17.** *Let  $n \in \mathbb{Z}_{>0}$ , the number of height-primitive one-cylinder surfaces with  $n$  squares in  $\mathcal{H}(2)$  of type A is*

$$\frac{1}{3} \sum_{\substack{\ell_1, \ell_2, \ell_3 \text{ odd} \\ \ell_1 + \ell_2 + \ell_3 = n}} n.$$

*Proof.* See figure 5. Since the cylinder is primitive in height, it has height 1. As proved in [HL06, §5.1.1], the Weierstrass points are

- the saddle point, which has integer coordinates
- two points lying on the core of the cylinder, which do not have integer coordinates
- the midpoints of the three saddle connections, each of these points having integer coordinates if and only if the corresponding saddle connection has even length.

$\square$

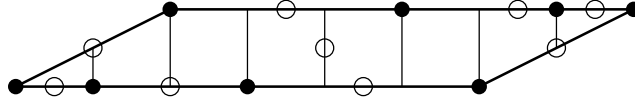


FIGURE 5. Weierstrass points of a one-cylinder surface

**Proposition 18.** Let  $n \in \mathbb{Z}_{>0}$ , the number of height-primitive two-cylinder surfaces with  $n$  squares in  $\mathcal{H}(2)$  of type A is

$$\sum_{\substack{h_1, h_2, u_1, u_2 \in \mathbb{Z}_{\geq 0} \\ h_1 u_1 + h_2 u_2 = n \\ (h_1, h_2) = 1 \\ h_1, h_2 \text{ odd} \\ u_1 < u_2}} u_1 u_2 + \frac{1}{2} \sum_{\substack{h_1, h_2, u_1, u_2 \in \mathbb{Z}_{\geq 0} \\ h_1 u_1 + h_2 u_2 = n \\ (h_1, h_2) = 1 \\ h_1 \not\equiv h_2 \pmod{2} \\ u_1 < u_2 \\ u_1 u_2 \text{ even}}} u_1 u_2.$$

*Proof.* Among height-primitive two-cylinder surfaces with parameters  $h_1, h_2, u_1, u_2, t_1, t_2$ , such that  $h_1 u_1 + h_2 u_2 = n$  (odd):

- all surfaces with  $h_1$  and  $h_2$  odd are of type A;
- all surfaces with  $u_1$  and  $u_2$  odd are of type B;
- exactly half of the remaining surfaces (with different parity for  $u_1$  and  $u_2$  and for  $h_1$  and  $h_2$ ) are of type A, and half are of type B;

for each  $(h_1, h_2, u_1, u_2)$ , there are  $u_1 u_2$  possible twists (if  $n$  is not prime some values of the twists may yield non primitive surfaces which is why we only require height-primitivity). In the case of different parities for  $h_1$  and  $h_2$  and for  $u_1$  and  $u_2$ , the product  $u_1 u_2$  is even and exactly half of the possible twists corresponds to each type. The height-primitivity condition is just that the heights of the cylinders have greatest common divisor equal to one.  $\square$

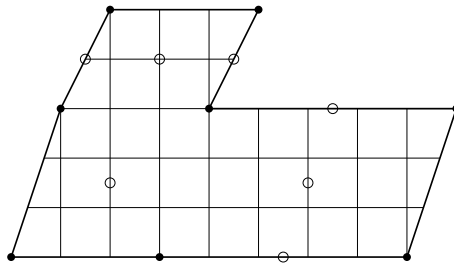


FIGURE 6. Weierstrass points of a two-cylinder surface

#### 4. QUASIMODULAR FORMS

4.1. **Motivation.** The aim of this part is the computation of sums of type

$$(2) \quad S_k(n) = \sum_{\substack{(a,b) \in \mathbb{Z}_{>0}^2 \\ ka+b=n}} \sigma_1(a)\sigma_1(b)$$

with  $k \in \mathbb{Z}_{>0}$ . Here we study only the cases  $k \in \{1, 2, 4\}$  but the method in fact applies to every  $k$  [Roy05].

Useful to the study of these sums is the weight 2 Eisenstein series

$$(3) \quad E_2(z) = 1 - 24 \sum_{n=1}^{+\infty} \sigma_1(n) e(nz)$$

where

$$e(\tau) = \exp(2i\pi\tau) \quad (\Im \tau > 0).$$

Defining

$$H_k(z) = E_2(z)E_2(kz),$$

one gets

$$(4) \quad H_k(z) = 1 - 24 \sum_{n=1}^{+\infty} \left[ \sigma_1(n) + \sigma_1\left(\frac{n}{k}\right) \right] e(nz) + 576 \sum_{n=1}^{+\infty} S_k(n) e(nz).$$

We shall achieve the linearisation of  $H_k$  using the theory of quasimodular forms, developed by Kaneko & Zagier. The computation of  $S_k(n)$  will be deduced for each  $n$ .

**4.2. Definition.** Let us therefore begin by surveying our prerequisites on quasimodular forms, referring to [MR05, §17] for the details. Define

$$\Gamma_0(N) = \left\{ \begin{pmatrix} a & b \\ c & d \end{pmatrix} : (a, b, c, d) \in \mathbb{Z}^4, ad - bc = 1, N \mid c \right\}$$

for all integers  $N \geq 1$ . In particular,  $\Gamma_0(1)$  is  $\mathrm{SL}(2, \mathbb{Z})$ . Denote by  $\mathcal{H}$  the Poincaré upper half plane:

$$\mathcal{H} = \{z \in \mathbb{C} : \Im z > 0\}.$$

**Definition 19.** Let  $N \in \mathbb{Z}_{>0}$ ,  $k \in \mathbb{Z}_{\geq 0}$  and  $s \in \mathbb{Z}_{\geq 0}$ . A holomorphic function

$$f: \mathcal{H} \rightarrow \mathbb{C}$$

is a quasimodular form of weight  $k$ , depth  $s$  on  $\Gamma_0(N)$  if there exist holomorphic functions  $f_0, f_1, \dots, f_s$  on  $\mathcal{H}$  such that

$$(5) \quad (cz + d)^{-k} f\left(\frac{az + b}{cz + d}\right) = \sum_{i=0}^s f_i(z) \left(\frac{c}{cz + d}\right)^i$$

for all  $\begin{pmatrix} a & b \\ c & d \end{pmatrix} \in \Gamma_0(N)$  and such that  $f_s$  is holomorphic at the cusps and not identically vanishing. By convention, the 0 function is a quasimodular form of depth 0 for each weight.

Here is what is meant by the requirement for  $f_s$  to be holomorphic at the cusps. One can show [MR05, Lemme 119] that if  $f$  satisfies the quasimodularity condition (5), then  $f_s$  satisfies the modularity condition

$$(cz + d)^{-(k-2s)} f_s\left(\frac{az + b}{cz + d}\right) = f_s(z)$$

for all  $\begin{pmatrix} a & b \\ c & d \end{pmatrix} \in \Gamma_0(N)$ . Asking  $f_s$  to be holomorphic at the cusps is asking that, for all  $M = \begin{pmatrix} \alpha & \beta \\ \gamma & \delta \end{pmatrix} \in \Gamma_0(1)$ , the function

$$z \mapsto (\gamma z + \delta)^{-(k-2s)} f_s \left( \frac{\alpha z + \beta}{\gamma z + \delta} \right)$$

has a Fourier expansion of the form

$$\sum_{n=0}^{+\infty} \widehat{f}_{s,M}(n) e \left( \frac{nz}{u_M} \right)$$

where

$$u_M = \inf \{ u \in \mathbb{Z}_{>0} : T^u \in M^{-1} \Gamma_0(N) M \}.$$

In other words,  $f_s$  is automatically a modular function and is required to be more than that, a modular form of weight  $k - 2s$  on  $\Gamma_0(N)$ . It follows that if  $f$  is a quasimodular form of weight  $k$  and depth  $s$ , non identically vanishing, then  $k$  is even and  $s \leq k/2$ .

*Remark.* Let  $\chi$  be a Dirichlet character (see §4.4). If  $f$  satisfies all of what is needed to be a quasimodular form except (5) being replaced by

$$(cz + d)^{-k} f \left( \frac{az + b}{cz + d} \right) = \chi(d) \sum_{i=0}^n f_i(z) \left( \frac{c}{cz + d} \right)^i,$$

then, one says that  $f$  is a quasimodular form of weight  $k$ , depth  $s$  and character  $\chi$  on  $\Gamma_0(N)$ .

The Eisenstein series  $E_2$  transforms as

$$(cz + d)^{-2} E_2 \left( \frac{az + b}{cz + d} \right) = E_2(z) + \frac{6}{i\pi} \frac{c}{cz + d}$$

under the action of any  $\begin{pmatrix} a & b \\ c & d \end{pmatrix} \in \Gamma_0(1)$ . Hence,  $E_2$  is a quasimodular form of weight 2 and depth 1 on  $\Gamma_0(1)$ . Defining

$$E_{N,2}(z) = E_2(Nz),$$

one has

$$(cz + d)^{-2} E_{N,2} \left( \frac{az + b}{cz + d} \right) = E_{N,2}(z) + \frac{6}{i\pi N} \frac{c}{cz + d}$$

for all  $\begin{pmatrix} a & b \\ c & d \end{pmatrix} \in \Gamma_0(N)$ . Hence,  $E_{N,2}$  is a quasimodular form of weight 2 and depth 1 on  $\Gamma_0(N)$ . One denotes by  $\widetilde{M}_k[\Gamma_0(N)]^{\leq s}$  the space of quasimodular forms of weight  $k$  and depth less than or equal to  $s$  on  $\Gamma_0(N)$ . The space  $\widetilde{M}_k[\Gamma_0(N)]^{\leq 0}$  is the space  $M_k[\Gamma_0(N)]$  of modular forms of weight  $k$  on  $\Gamma_0(N)$ . A recurrence on the depth implies [MR05, Corollaire 121] the equality

$$(6) \quad \widetilde{M}_k[\Gamma_0(N)]^{\leq s} = \bigoplus_{i=0}^s M_{k-2i}[\Gamma_0(N)] E_2^i.$$

It is known that  $M_2[\Gamma_0(1)] = \{0\}$ . However, if  $N > 1$ , one deduces from

$$\mathbb{C}E_2 \oplus \mathbb{C}E_{N,2} \subset \widetilde{M}_2[\Gamma_0(N)]^{\leq 1} = M_2[\Gamma_0(N)] \oplus \mathbb{C}E_2$$

that  $\dim M_2[\Gamma_0(N)] \geq 1$ . By the way, for every family  $(c_d)_{d|N}$  such that

$$\sum_{d|N} \frac{c_d}{d} = 0$$

one has

$$\left[ z \mapsto \sum_{d|N} c_d E_2(dz) \right] \in M_2[\Gamma_0(N)].$$

Denote by  $D$  the differential operator

$$D = \frac{1}{2i\pi} \frac{d}{dz}.$$

It defines a linear application from  $\tilde{M}_k[\Gamma_0(N)]^{\leq s}$  to  $\tilde{M}_{k+2}[\Gamma_0(N)]^{\leq s+1}$ . This application is injective and strictly increases the depth if  $k > 0$ . This property allows to linearise the basis given in (6).

**Lemma 20.** *Let  $k \geq 2$  even. Then,*

$$\tilde{M}_k[\Gamma_0(N)]^{\leq k/2} = \bigoplus_{i=0}^{k/2-1} D^i M_{k-2i}[\Gamma_0(N)] \oplus \mathbb{C} D^{k/2-1} E_2.$$

**4.3. Sums of sums of divisors.** Lemma 20 allows to reach our goal by expressing the sums  $S_1$ ,  $S_2$  and  $S_4$  introduced in (2) as follows.

**Proposition 21.** *Let  $n \geq 1$ . Then,*

$$S_1(n) = \frac{5}{12} \sigma_3(n) - \frac{n}{2} \sigma_1(n) + \frac{1}{12} \sigma_1(n),$$

$$S_2(n) = \frac{1}{12} \sigma_3(n) + \frac{1}{3} \sigma_3\left(\frac{n}{2}\right) - \frac{1}{8} n \sigma_1(n) - \frac{1}{4} n \sigma_1\left(\frac{n}{2}\right) + \frac{1}{24} \sigma_1(n) + \frac{1}{24} \sigma_1\left(\frac{n}{2}\right)$$

and

$$S_4(n) = \frac{1}{48} \sigma_3(n) + \frac{1}{16} \sigma_3\left(\frac{n}{2}\right) + \frac{1}{3} \sigma_3\left(\frac{n}{4}\right) - \frac{1}{16} n \sigma_1(n) - \frac{1}{4} n \sigma_1\left(\frac{n}{4}\right) + \frac{1}{24} \sigma_1(n) + \frac{1}{24} \sigma_1\left(\frac{n}{4}\right).$$

*Proof.* We detail the proof for the expression of  $S_4$ . The function  $H_4$ , introduced in (4), is a quasimodular form of weight 4 and depth 2 on  $\Gamma_0(4)$ . Lemma 20 gives

$$\tilde{M}_4[\Gamma_0(4)]^{\leq 2} = M_4[\Gamma_0(4)] \oplus DM_2[\Gamma_0(4)] \oplus \mathbb{C} D E_2.$$

The space  $M_4[\Gamma_0(4)]$  has dimension 3 and contains the linearly independent functions

$$(7) \quad E_4(z) = 1 + 240 \sum_{n=1}^{+\infty} \sigma_3(n) e(nz)$$

$$E_{2,4}(z) = E_4(2z)$$

$$E_{4,4}(z) = E_4(4z).$$

The space  $M_2[\Gamma_0(4)]$  has dimension 2 and is generated by

$$(8) \quad \Phi_2(z) = 2E_2(2z) - E_2(z)$$

$$(9) \quad \Phi_4(z) = \frac{4}{3} E_2(4z) - \frac{1}{3} E_2(z).$$

Hence, by the computations of the first seven Fourier coefficients, one gets

$$H_4 = \frac{1}{20} E_4 + \frac{3}{20} E_{2,4} + \frac{4}{5} E_{4,4} + \frac{9}{2} D \Phi_4 + 3 D E_2.$$

The computation of  $S_4$  is then obtained by comparison of the Fourier coefficients of this equality. The computation of  $S_2$  is obtained along the same lines via the equality

$$H_2 = \frac{1}{5}E_4 + \frac{4}{5}E_{2,4} + 3D\Phi_2 + 6DE_2$$

between forms of  $\tilde{M}_4[\Gamma_0(2)]^{\leq 2}$ . At last, the expression of  $S_1$  is deduced from the equality

$$E_2^2 = E_4 + 12DE_2$$

between forms of  $\tilde{M}_4[\Gamma_0(1)]^{\leq 2}$ .  $\square$

*Remark.* The computation of  $H_4$ , which lies in the dimension 6 vector space with basis  $\{E_4, E_{2,4}, E_{4,4}, D\Phi_2, D\Phi_4, DE_2\}$ , required working on *seven* consecutive Fourier coefficients. We briefly explain why, mentioning that any sequence of 6 consecutive coefficients is not sufficient. For any function

$$f(z) = \sum_{n=0}^{+\infty} \hat{f}(n)e(nz)$$

and any integer  $i \geq 0$ , define

$$c(f, i) = \left( \hat{f}(i), \hat{f}(i+1), \hat{f}(i+2), \hat{f}(i+3), \hat{f}(i+4), \hat{f}(i+5) \right),$$

and let

$$\begin{aligned} v_1(i) &= c(E_4, i) & v_2(i) &= c(E_{2,4}, i) & v_3(i) &= c(E_{4,4}, i) \\ v_4(i) &= c(D\Phi_2, i) & v_5(i) &= c(D\Phi_4, i) & v_6(i) &= c(DE_2, i). \end{aligned}$$

Then, for each  $i$ , there exists an explicitly computable linear relation between  $v_2(i)$ ,  $v_3(i)$ ,  $v_4(i)$ ,  $v_5(i)$  and  $v_6(i)$ . One could think of using a basis of  $\tilde{M}_4[\Gamma_0(1)]^{\leq 2}$  echelonized by increasing powers of  $e(z)$ . The same phenomenon would however appear when changing to such a basis and expressing the new basis elements in terms of the original basis.

**4.4. Twist by a Dirichlet character.** Recall that a Dirichlet character  $\chi$  is a character of a multiplicative group  $(\mathbb{Z}/q\mathbb{Z})^\times$  extended to a function on  $\mathbb{Z}$  by defining

$$\chi(n) = \begin{cases} \chi(n \pmod{q}) & \text{if } (n, q) = 1 \\ 0 & \text{otherwise} \end{cases}$$

(see *e.g.* [IK04, Chapter 3]).

A quasimodular form admits a Fourier expansion

$$(10) \quad f(z) = \sum_{n=0}^{+\infty} \hat{f}(n)e(nz).$$

Since we shall need to compute the odd part of a quasimodular form, we introduce the notion of twist of a quasimodular form by a Dirichlet character.

**Definition 22.** *Let  $\chi$  be a Dirichlet character. Let  $f$  be a function having Fourier expansion of the form (10). The twist of  $f$  by  $\chi$  is the function  $f \otimes \chi$*

defined by the Fourier expansion

$$f \otimes \chi(z) = \sum_{n=0}^{+\infty} \chi(n) \widehat{f}(n) e(nz).$$

The interest of this definition is that it allows to build quasimodular forms, as stated in the next proposition.

**Proposition 23.** *Let  $\chi$  be a Dirichlet character of conductor  $m$  with non vanishing Gauss sum. Let  $f$  be a quasimodular form of weight  $k$  and depth  $s$  on  $\Gamma_0(N)$ . Then  $f \otimes \chi$  is a quasimodular form of weight  $k$ , depth less than or equal  $s$  and character  $\chi^2$  on  $\Gamma_0(\text{lcm}(N, m^2))$ .*

*Remark.* The Gauss sum of a character  $\chi$  modulo  $m$  is defined by

$$\tau(\chi) = \sum_{u \pmod{m}} \chi(u) e\left(\frac{u}{m}\right).$$

*Proof.* The proof is an adaptation of the corresponding result for modular forms (see *e.g.* [Iwa97, Theorem 7.4]). We consider for each  $k$  the following action of  $\text{SL}_2(\mathbb{R})$  on holomorphic functions on  $\mathcal{H}$ :

$$(f|_k \begin{pmatrix} a & b \\ c & d \end{pmatrix})(z) = (cz + d)^{-k} f\left(\frac{az + b}{cz + d}\right).$$

Since  $\chi$  is primitive, this sum is not zero. One has

$$(11) \quad \tau(\overline{\chi})g \otimes \chi = \sum_{v \pmod{m}} \overline{\chi}(v) (g|_k \begin{pmatrix} 1 & v/m \\ 0 & 1 \end{pmatrix})$$

as soon as  $g$  has a Fourier expansion of the form (10). Define  $M = \text{lcm}(N, m^2)$ . Let  $\begin{pmatrix} \alpha & \beta \\ \gamma & \delta \end{pmatrix} \in \Gamma_0(M)$ . The matrix

$$\begin{pmatrix} 1 & v/m \\ 0 & 1 \end{pmatrix} \begin{pmatrix} \alpha & \beta \\ \gamma & \delta \end{pmatrix} \begin{pmatrix} 1 & v\delta^2/m \\ 0 & 1 \end{pmatrix}^{-1}$$

being in  $\Gamma_0(N)$ , one deduces from the level  $N$  quasimodularity of  $f$  and (11) that

$$\begin{aligned} \tau(\overline{\chi})(f \otimes \chi|_k \begin{pmatrix} \alpha & \beta \\ \gamma & \delta \end{pmatrix})(z) = \\ \sum_{i=0}^s \sum_{v \pmod{m}} \overline{\chi}(v) (f_i|_{k-2i} \begin{pmatrix} 1 & \delta^2 v/m \\ 0 & 1 \end{pmatrix})(z) \left[ \frac{\gamma}{\gamma \left(z + \frac{\delta^2 v}{m}\right) + \delta - \frac{\gamma \delta^2 v}{m}} \right]^i. \end{aligned}$$

Since the functions  $f_i$  are themselves quasimodular forms (see [MR05, Lemme 119]), they admit a Fourier expansion. Hence, from (11),

$$\tau(\overline{\chi})(f \otimes \chi|_k \begin{pmatrix} \alpha & \beta \\ \gamma & \delta \end{pmatrix})(z) = \tau(\overline{\chi})\chi(\delta)^2 \sum_{i=0}^s f_i \otimes \chi(z) \left(\frac{\gamma}{\gamma z + \delta}\right)^i.$$

It follows that  $f \otimes \chi$  satisfies the quasimodularity condition. There remains to prove the holomorphy at the cusps, which is quite delicate since  $f_s \otimes \chi$  may be 0 even though  $f_s$  is not. Actually, lemma 20 and the fact that the twist of a modular form on  $\Gamma_0(N)$  by a primitive Dirichlet character of conductor  $m$  is a modular form on  $\Gamma_0(M)$  show that the proposition is

proved as soon as it is proved for  $f = D^{k/2-1}E_2$ . In that case,  $s = k/2$  and  $f_s \otimes \chi$  is not 0 (see [MR05, Lemma 118]), hence  $f_s$  being a modular form implies that  $f_s \otimes \chi$  is also one.  $\square$

## 5. PROOF OF HUBERT & LELIÈVRE CONJECTURE

The aim of this part is the proof of theorem 1. In all this part,  $n$  is assumed to be odd. Define

$$\begin{aligned}\alpha_1(n, r) &= \sum_{(h_1, u_1, h_2, u_2) \in \mathcal{A}_1(n, r)} u_1 u_2 \\ \alpha_2(n, r) &= \frac{1}{2} \sum_{(h_1, u_1, h_2, u_2) \in \mathcal{A}_2(n, r)} u_1 u_2 \\ \alpha_3(n, r) &= \frac{n}{3} \sum_{(u_1, u_2, u_3) \in \mathcal{A}_3(n, r)} 1\end{aligned}$$

with

$$\mathcal{A}_1(n, r) = \left\{ (h_1, u_1, h_2, u_2) \in \mathbb{Z}_{>0}^4 : \left| \begin{array}{l} (h_1, h_2) = 1, \\ h_1 \text{ and } h_2 \text{ odd,} \end{array} \right. \quad u_1 < u_2, \quad h_1 u_1 + h_2 u_2 = \frac{n}{r} \right\}$$

$$\mathcal{A}_2(n, r) = \left\{ (h_1, u_1, h_2, u_2) \in \mathbb{Z}_{>0}^4 : \left| \begin{array}{l} (h_1, h_2) = 1, \\ h_1 \text{ or } h_2 \text{ even,} \end{array} \right. \quad \left| \begin{array}{l} u_1 < u_2, \\ u_1 \text{ or } u_2 \text{ even,} \end{array} \right. \quad h_1 u_1 + h_2 u_2 = \frac{n}{r} \right\}$$

and

$$\mathcal{A}_3(n, r) = \left\{ (u_1, u_2, u_3) \in (2\mathbb{Z}_{\geq 0} + 1)^3 : u_1 + u_2 + u_3 = \frac{n}{r} \right\}.$$

By lemma 16 and propositions 17 and 18, our goal is the computation of

$$(12) \quad a_n^p = \sum_{r|n} \mu(r) [r\alpha_1(n, r) + r\alpha_2(n, r) + \alpha_3(n, r)].$$

This, and hence theorem 1 is the consequence of the following lemmas 25, 28 and 29.

**5.1. A preliminary arithmetical result.** The following lemma will be useful in the sequel.

**Lemma 24.** *Let  $n \geq 1$ , then*

$$\sum_{r|n} r\mu(r) \sum_{d|n/r} \mu(d)\sigma_k \left( \frac{n}{rd} \right) = n^k \sum_{r|n} \frac{\mu(r)}{r^{k-1}}.$$

and

$$\sum_{r|n} \mu(r) \sum_{d|n/r} \frac{\mu(d)}{d} \sigma_1 \left( \frac{n}{rd} \right) = n \sum_{d|n} \frac{\mu(d)}{d^2}.$$

*Proof.* Consider the function

$$f = (\text{id}^\ell \mu) * \mu * \sigma_k.$$

Then,

$$L(f, s) = \frac{\zeta(s-k)}{\zeta(s-\ell)} = L(\text{id}^\ell \mu, s)L(\text{id}^k, s)$$

hence

$$f = (\text{id}^\ell \mu) * \text{id}^k.$$

The lemma follows by taking  $\ell = 1$  for the first equality and  $\ell = k = 1$  for the second.  $\square$

*Remark.* Note that

$$\sum_{r|n} \frac{\mu(r)}{r^2} = \prod_{p|n} \left(1 - \frac{1}{p^2}\right).$$

**5.2. Two cylinders and odd heights.** Here, we compute the sum

$$\sum_{r|n} r\mu(r)\alpha_1(n, r).$$

More precisely, we prove the following lemma.

**Lemma 25.** *The number of type A primitive surfaces with  $n$  squares and two cylinders of odd height is*

$$\frac{n^2(n-1)}{8} \sum_{r|n} \frac{\mu(r)}{r^2}.$$

Write

$$(13) \quad \alpha_1(n, r) = \gamma_1(n, r) - \tilde{\alpha}_1(n, r)$$

with

$$\gamma_1(n, r) = \sum_{(h_1, u_1, h_2, u_2) \in \mathcal{C}(n, r)} u_1 u_2$$

and

$$\tilde{\alpha}_1(n, r) = \sum_{(h_1, u_1, h_2, u_2) \in \tilde{\mathcal{A}}_1(n, r)} u_1 u_2$$

where

$$\mathcal{C}(n, r) = \left\{ (h_1, u_1, h_2, u_2) \in \mathbb{Z}_{>0}^4 : (h_1, h_2) = 1, u_1 < u_2, h_1 u_1 + h_2 u_2 = \frac{n}{r} \right\}$$

and (recalling that  $n$  is odd)

$$\tilde{\mathcal{A}}_1(n, r) = \left\{ (h_1, u_1, h_2, u_2) \in \mathbb{Z}_{>0}^4 : \begin{array}{l} (h_1, h_2) = 1, \\ h_1 \text{ or } h_2 \text{ even,} \end{array} u_1 < u_2, h_1 u_1 + h_2 u_2 = \frac{n}{r} \right\}.$$

Note that the sum

$$\sum_{r|n} r\mu(r)\gamma_1(n, r)$$

is the total number of primitive surfaces with two cylinders. Lemma 25 is a consequence of the two following lemmas 26, 27 and of equation (13).

5.2.1. *Surfaces with two cylinders.* We prove the following result.

**Lemma 26.** *For  $n$  odd, the number of primitive surfaces with  $n$  squares and two cylinders is*

$$\frac{n^2(5n-18)}{24} \sum_{r|n} \frac{\mu(r)}{r^2} - \frac{n}{2} \varphi(n)$$

where  $\varphi$  is the Euler function.

Using Möbius inversion formula, one obtains

$$\begin{aligned} \gamma_1(n, r) &= \sum_{d|n/r} \mu(d) \sum_{\substack{(i_1, u_1, i_2, u_2) \in \mathbb{Z}_{>0}^4 \\ u_1 < u_2 \\ i_1 u_1 + i_2 u_2 = n/(rd)}} u_1 u_2 \\ (14) \qquad &= \gamma_{1,1}(n, r) - \gamma_{1,2}(n, r) \end{aligned}$$

with

$$\gamma_{1,1}(n, r) = \frac{1}{2} \sum_{d|n/r} \mu(d) \sum_{\substack{(i_1, u_2, i_2, u_2) \in \mathbb{Z}_{>0}^4 \\ i_1 u_1 + i_2 u_2 = n/(rd)}} u_1 u_2$$

and

$$\gamma_{1,2}(n, r) = \frac{1}{2} \sum_{d|n/r} \mu(d) \sum_{\substack{(i_1, i_2, u) \in \mathbb{Z}_{>0}^3 \\ (i_1 + i_2)u = n/(rd)}} u^2.$$

One has

$$\gamma_{1,1}(n, r) = \frac{1}{2} \sum_{d|n/r} \mu(d) \sum_{\substack{(v_1, v_2) \in \mathbb{Z}_{>0}^2 \\ v_1 + v_2 = n/(rd)}} \sum_{w_1|v_1} w_1 \sum_{w_2|v_2} w_2 = \frac{1}{2} \sum_{d|n/r} \mu(d) S_1 \left( \frac{n}{rd} \right).$$

By proposition 21, this can be linearised to

$$\begin{aligned} \gamma_{1,1}(n, r) &= \frac{5}{24} \sum_{d|n/r} \mu(d) \sigma_3 \left( \frac{n}{rd} \right) - \frac{n}{4r} \sum_{d|n/r} \frac{\mu(d)}{d} \sigma_1 \left( \frac{n}{rd} \right) \\ &\qquad\qquad\qquad + \frac{1}{24} \sum_{d|n/r} \mu(d) \sigma_1 \left( \frac{n}{rd} \right) \end{aligned}$$

so as to obtain

$$(15) \qquad \sum_{r|n} r \mu(r) \gamma_{1,1}(n, r) = \left( \frac{5}{24} n^3 - \frac{1}{4} n^2 \right) \sum_{r|n} \frac{\mu(r)}{r^2}$$

thanks to lemma 24.

Next, one has

$$\gamma_{1,2}(n, r) = \frac{1}{2} \sum_{d|n/r} \mu(d) \sum_{v|n/(rd)} v^2 \left( \frac{n}{rdv} - 1 \right)$$

so that

$$\begin{aligned}
\sum_{r|n} r\mu(r)\gamma_{1,2}(n,r) &= \frac{n}{2} \sum_{r|n} \mu(r) \sum_{d|n/r} \frac{\mu(d)}{d} \sigma_1\left(\frac{n}{rd}\right) \\
&\quad - \frac{1}{2} \sum_{r|n} r\mu(r) \sum_{d|n/r} \mu(d) \sigma_2\left(\frac{n}{rd}\right) \\
(16) \qquad &= \frac{n^2}{2} \sum_{r|n} \frac{\mu(r)}{r^2} - \frac{n}{2} \varphi(n)
\end{aligned}$$

by lemma 24.

Finally, reporting (16) and (15) in (14) leads to lemma 26.

5.2.2. *Even product of heights.* Let us now compute the contribution of  $\tilde{\alpha}_1(n,r)$ .

**Lemma 27.** *The number of type A primitive surfaces with  $n$  squares and two cylinders, one having even height is*

$$\frac{n^2(2n-15)}{24} \sum_{r|n} \frac{\mu(r)}{r^2} + \frac{n}{2} \varphi(n).$$

Write

$$(17) \qquad \tilde{\alpha}_1(n,r) = \tilde{\alpha}_{1,1}(n,r) - \tilde{\alpha}_{1,2}(n,r)$$

with, recalling again that  $n$  is odd,

$$\tilde{\alpha}_{1,1}(n,r) = \frac{1}{2} \sum_{d|n/r} \mu(d) \sum_{(i_1, u_1, i_2, u_2) \in \tilde{\mathcal{A}}_{1,1}(n,r)} u_1 u_2$$

and

$$\tilde{\alpha}_{1,2}(n,r) = \frac{1}{2} \sum_{d|n/r} \mu(d) \sum_{(i_1, i_2, u) \in \tilde{\mathcal{A}}_{1,2}(n,r)} u^2$$

where

$$\tilde{\mathcal{A}}_{1,1} = \left\{ (i_1, u_1, i_2, u_2) \in \mathbb{Z}_{>0}^4 : i_1 \text{ or } i_2 \text{ even, } i_1 u_1 + i_2 u_2 = \frac{n}{dr} \right\}$$

and

$$\tilde{\mathcal{A}}_{1,2} = \left\{ (i_1, i_2, u) \in \mathbb{Z}_{>0}^3 : i_1 \text{ or } i_2 \text{ even, } (i_1 + i_2)u = \frac{n}{dr} \right\}.$$

Since  $i_1$  and  $i_2$  are not simultaneously even, one has

$$\tilde{\alpha}_{1,1}(n,r) = \sum_{d|n/r} \mu(d) \sum_{\substack{(v_1, v_2) \in \mathbb{Z}_{>0}^2 \\ v_1 + v_2 = n/(dr)}} \sum_{\substack{i_1 | v_1 \\ i_1 \text{ even}}} \sum_{i_2 | v_2} i_2 = \sum_{d|n/r} \mu(d) S_2\left(\frac{n}{dr}\right).$$

Using proposition 21 and lemma 24, one obtains

$$(18) \qquad \sum_{r|n} r\mu(r)\tilde{\alpha}_{1,1}(n,r) = \left( \frac{1}{12} n^3 - \frac{1}{8} n^2 \right) \sum_{r|n} \frac{\mu(r)}{r^2}.$$

Next,

$$\tilde{\alpha}_{1,2}(n,r) = \frac{1}{2} \sum_{d|n/r} \mu(d) \sum_{u|n/(dr)} u^2 \left( \frac{n}{rdu} - 1 \right).$$

Lemma 24 gives

$$(19) \quad \sum_{r|n} r\mu(r)\tilde{\alpha}_{1,2}(n,r) = \frac{n^2}{2} \sum_{r|n} \frac{\mu(r)}{r^2} - \frac{n}{2}\varphi(n).$$

Reporting (19) and (18) in (17) leads to lemma 27.

**5.3. Two cylinders with even product of heights.** Compute at last the sum

$$\sum_{r|n} r\mu(r)\alpha_2(n,r).$$

**Lemma 28.** *The number of type A primitive surfaces with  $n$  squares and two cylinders, one having an even height, the other having an even length is*

$$\frac{n^2(n-3)}{48} \sum_{r|n} \frac{\mu(r)}{r^2}.$$

Since  $n$  is odd, one has

$$\alpha_2(n,r) = \frac{1}{4} \sum_{d|n/r} \mu(d) \sum_{(i_1, u_1, i_2, u_2) \in \hat{\mathcal{A}}_{1,2}(n,r,d)} u_1 u_2$$

with

$$\hat{\mathcal{A}}_{1,2}(n,r,d) = \left\{ (i_1, u_1, i_2, u_2) \in \mathbb{Z}_{>0}^4 : \begin{array}{l} i_1 \text{ and } u_1 \text{ even,} \\ \text{or} \\ i_2 \text{ and } u_2 \text{ even,} \end{array} i_1 u_1 + i_2 u_2 = \frac{n}{rd} \right\}.$$

Hence,

$$\begin{aligned} \alpha_2(n,r) &= \frac{1}{2} \sum_{d|n/r} \mu(d) \sum_{\substack{(i_1, u_1, i_2, u_2) \in \mathbb{Z}_{>0}^4 \\ i_1 \text{ and } u_1 \text{ even} \\ i_1 u_1 + i_2 u_2 = n/(rd)}} u_1 u_2 \\ &= \sum_{d|n/r} \mu(d) S_4\left(\frac{n}{rd}\right). \end{aligned}$$

The result follows from proposition 21 and lemma 24.

**5.4. One cylinder.** The counting in that case is more direct.

**Lemma 29.** *The number of type A primitive surfaces with  $n$  squares and one cylinder is*

$$\frac{n^3}{24} \sum_{r|n} \frac{\mu(r)}{r^2}.$$

One actually has

$$\begin{aligned} \sum_{r|n} \mu(r) \alpha_3(n, r) &= \frac{n}{3} \sum_{r|n} \mu\left(\frac{n}{r}\right) \# \left\{ (v_1, v_2, v_3) \in \mathbb{Z}_{\geq 0}^3 : v_1 + v_2 + v_3 = \frac{r-3}{2} \right\} \\ &= \frac{n}{3} \sum_{r|n} \mu\left(\frac{n}{r}\right) \frac{r^2 - 1}{8} \\ &= \frac{1}{24} n^3 \sum_{r|n} \frac{\mu(r)}{r^2}. \end{aligned}$$

**5.5. Computation of a generating series.** The number of non necessarily primitive surfaces with an odd number  $n$  of squares of type A is given by

$$a_n = \sum_{d|n} \sigma_1\left(\frac{n}{d}\right) a_d^{\text{p}}.$$

Even though this does not have any geometric sense, one can define numbers  $a_n^{\text{p}}$  and  $a_n$  by these formulae for even  $n \geq 2$ . We will compute the Fourier series attached to the resulting sequence  $(a_n)_{n \in \mathbb{Z}_{>0}}$ . Corollary 2 follows directly from the following proposition.

**Proposition 30.** *Let  $n \geq 1$ . Then*

$$a_n = \frac{3}{16} [\sigma_3(n) - n\sigma_1(n)].$$

*Proof.* We use the basic facts of § 5.1. We have

$$a_n = \frac{3}{16} [k_3(n) - k_2(n)]$$

where, for  $\ell \in \mathbb{Z}$ , the arithmetical function  $k_\ell$  is defined by

$$k_\ell = \sigma_1 * (\text{id}^\ell \Psi)$$

with

$$\Psi(n) = \sum_{r|n} \frac{\mu(r)}{r^2} = \mathcal{K} * (\text{id} \Psi)(n).$$

We deduce that

$$L(k_\ell, s) = \frac{\zeta(s)\zeta(s-1)\zeta(s-\ell)}{\zeta(s-\ell+2)}$$

hence

$$k_3 = \sigma_3 \text{ and } k_2 = \text{id} \sigma_1.$$

□

## 6. THE ASSOCIATED FOURIER SERIES

Recall that the two weight 2 modular forms  $\Phi_2$  and  $\Phi_4$  on  $\Gamma_0(2)$  and  $\Gamma_0(4)$  respectively have been defined in (8) and (9). In this section, we prove theorem 3. Since we want to eliminate the coefficients of even order, it is natural to consider the Fourier series obtained by twisting all coefficients by a modulus 2 character. By proposition 23, one obtains a quasimodular form of weight 4, depth less than or equal to 2 on  $\Gamma_0(4)$ , hence a linear combination of  $E_4, E_{2,4}, E_{4,4}, D\Phi_2, D\Phi_4$  and  $DE_2$  (see the proof of proposition 21). The

coefficients of this combination are found by computation of the first seven Fourier coefficients.

## REFERENCES

- [BO00] Spencer Bloch and Andrei Okounkov, *The character of the infinite wedge representation*, Adv. Math. **149** (2000), no. 1, 1–60. MR **MR1742353** (**2001g**:11059)
- [Dij95] Robbert Dijkgraaf, *Mirror symmetry and elliptic curves*, The moduli space of curves (Texel Island, 1994), Progr. Math., vol. 129, Birkhäuser Boston, Boston, MA, 1995, pp. 149–163. MR **MR1363055** (**96m**:14072)
- [EMS03] Alex Eskin, Howard Masur, and Martin Schmoll, *Billiards in rectangles with barriers*, Duke Math. J. **118** (2003), no. 3, 427–463. MR **MR1983037** (**2004c**:37059)
- [EO01] Alex Eskin and Andrei Okounkov, *Asymptotics of numbers of branched coverings of a torus and volumes of moduli spaces of holomorphic differentials*, Invent. Math. **145** (2001), no. 1, 59–103. MR **MR1839286** (**2002g**:32018)
- [HL05] Pascal Hubert and Samuel Lelièvre, *Noncongruence subgroups in  $\mathcal{H}(2)$* , Int. Math. Res. Not. (2005), no. 1, 47–64. MR **MR2130053**
- [HL06] ———, *Prime arithmetic Teichmüller discs in  $\mathcal{H}(2)$* , Israel J. Math. **151** (2006), 281–321.
- [IK04] Henryk Iwaniec and Emmanuel Kowalski, *Analytic number theory*, American Mathematical Society Colloquium Publications, vol. 53, American Mathematical Society, Providence, RI, 2004. MR **MR2061214** (**2005h**:11005)
- [Iwa97] Henryk Iwaniec, *Topics in classical automorphic forms*, Graduate Studies in Mathematics, vol. 17, American Mathematical Society, Providence, RI, 1997. MR **MR1474964** (**98e**:11051)
- [KZ95] Masanobu Kaneko and Don Zagier, *A generalized Jacobi theta function and quasimodular forms*, The moduli space of curves (Texel Island, 1994), Progr. Math., vol. 129, Birkhäuser Boston, Boston, MA, 1995, pp. 165–172. MR **MR1363056** (**96m**:11030)
- [Mas06] Howard Masur, *Ergodic theory of translation surfaces*, Handbook of dynamical systems. Vol. 1B, Elsevier B. V., Amsterdam, 2006, pp. 527–547. MR **MR2186247**
- [McM05] Curtis T. McMullen, *Teichmüller curves in genus two: discriminant and spin*, Math. Ann. **333** (2005), no. 1, 87–130. MR **MR2169830**
- [MR05] François Martin and Emmanuel Royer, *Formes modulaires et périodes*, Colloque Jeunes. Formes modulaires et Transcendance (Marseille-Luminy, 2003) (Stéphane Fischler, Éric Gaudron, and Samy Khémira, eds.), Sémin. Congr., vol. 12, Société Mathématique de France, 2005, pp. xiv+275.
- [Roy05] Emmanuel Royer, *Evaluating convolution sums of the divisor function by quasi-modular forms*, math.NT/0510429, 2005.
- [Ser77] Jean-Pierre Serre, *Cours d'arithmétique*, Presses Universitaires de France, Paris, 1977, Deuxième édition revue et corrigée, Le Mathématicien, No. 2. MR **MR0498338** (58 #16473)
- [Zor02] Anton Zorich, *Square tiled surfaces and Teichmüller volumes of the moduli spaces of abelian differentials*, Rigidity in dynamics and geometry (Cambridge, 2000), Springer, Berlin, 2002, pp. 459–471. MR **MR1919417** (**2003h**:32021)

SAMUEL LELIÈVRE, MATHEMATICS INSTITUTE, UNIVERSITY OF WARWICK, COVENTRY CV4 7AL, UNITED KINGDOM

*E-mail address:* samuel.lelievre@polytechnique.org

*URL:* <http://carva.org/samuel.lelievre/>

EMMANUEL ROYER, I3M, UMR CNRS 5149, UNIVERSITÉ MONTPELLIER 2, CASE 51, PLACE EUGÈNE BATAILLON, F-34095 MONTPELLIER CEDEX 5, FRANCE

*E-mail address:* royer@math.univ-montp2.fr

UNIVERSITÉ MONTPELLIER III, MIAP, F-34199 MONTPELLIER CEDEX, FRANCE  
*E-mail address:* `emmanuel.royer@polytechnique.org`  
*URL:* `http://carva.org/emmanuel.royer/`