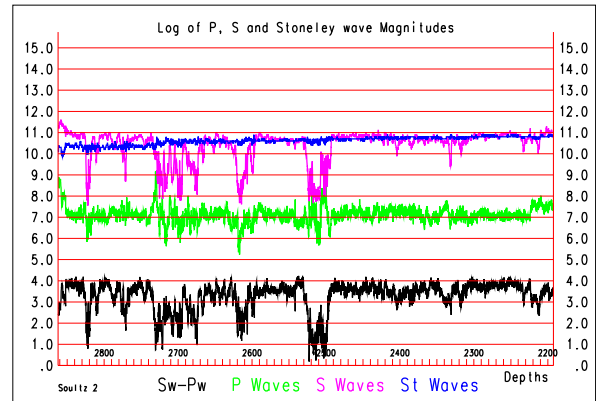
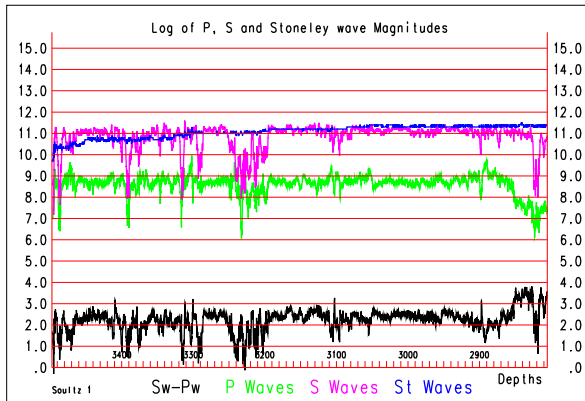
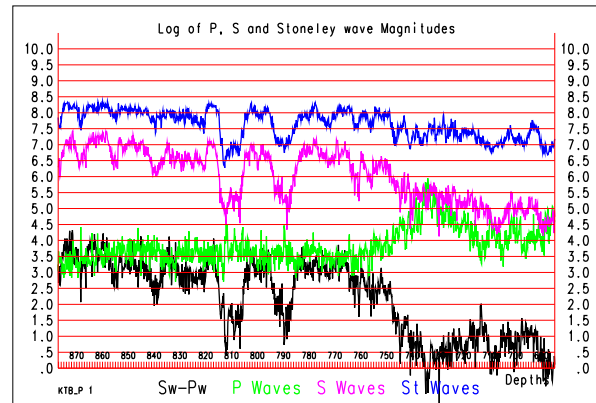
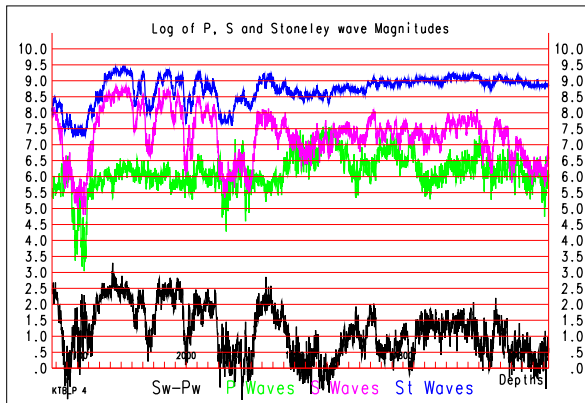
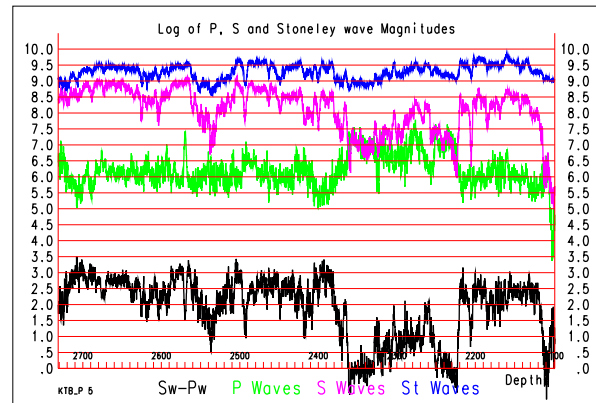
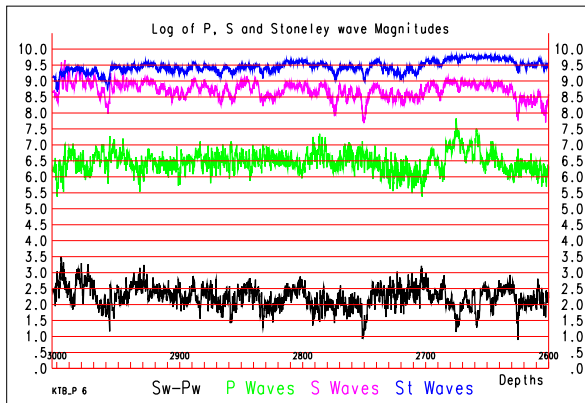
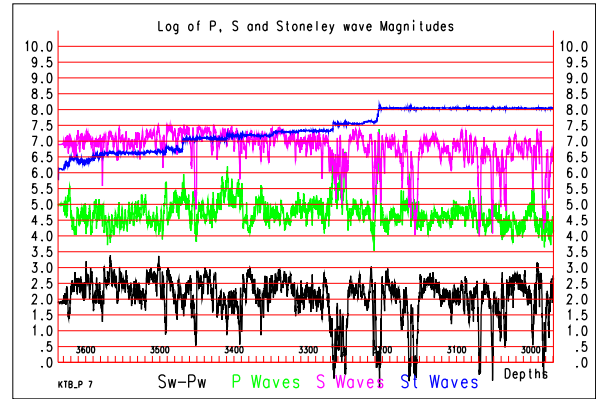
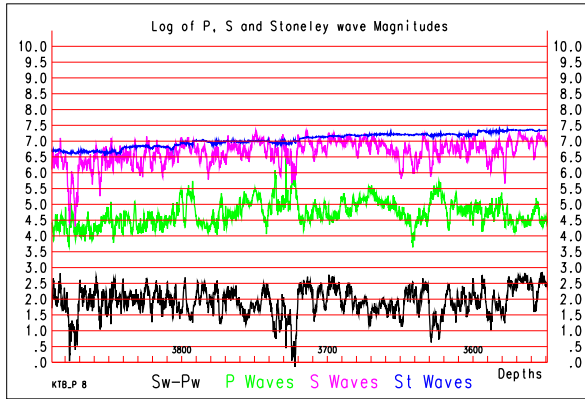
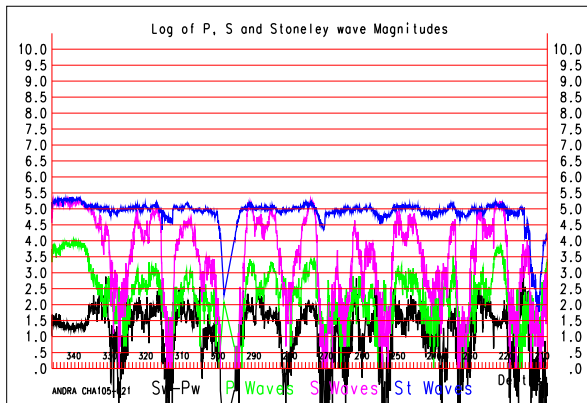
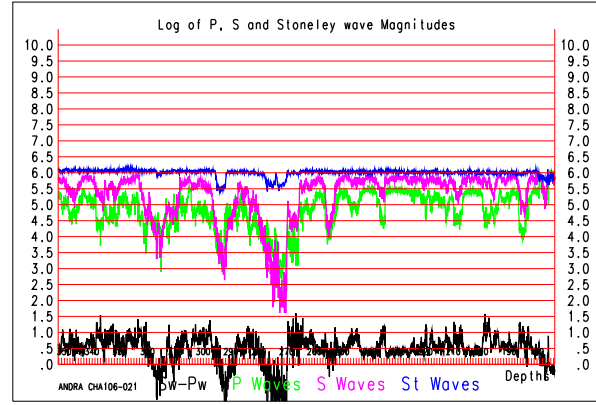
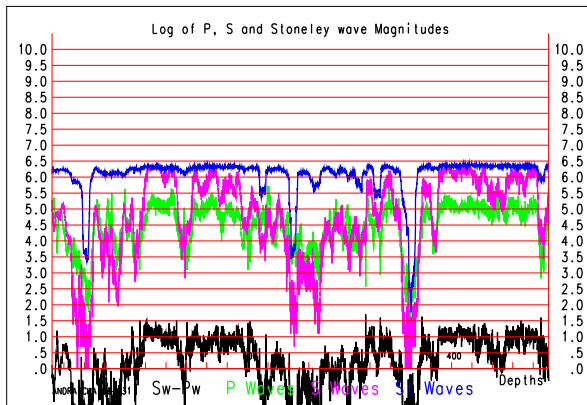
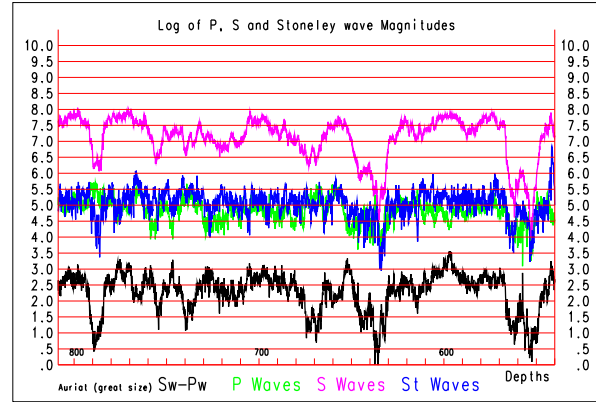
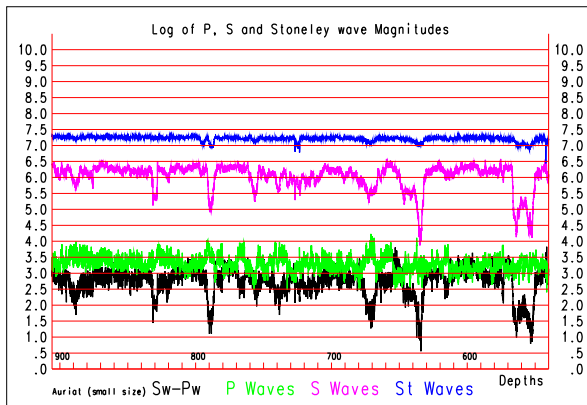
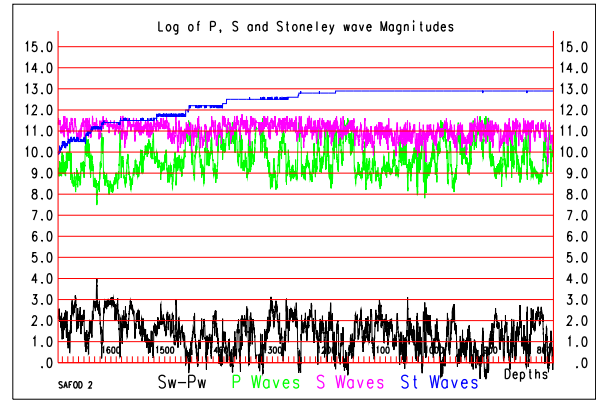
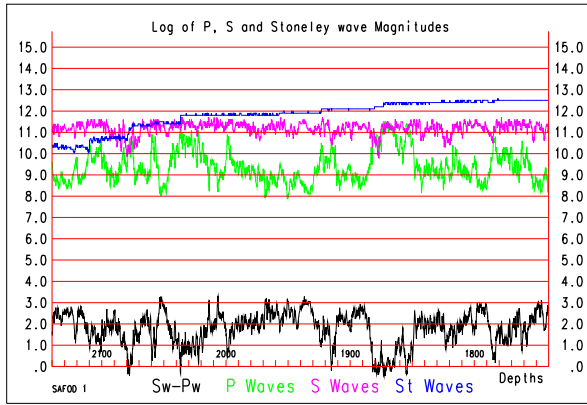


Comparative study of P and S wave amplitudes of acoustic logging





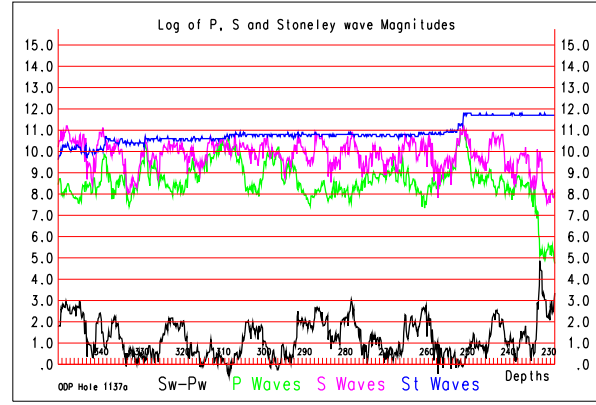
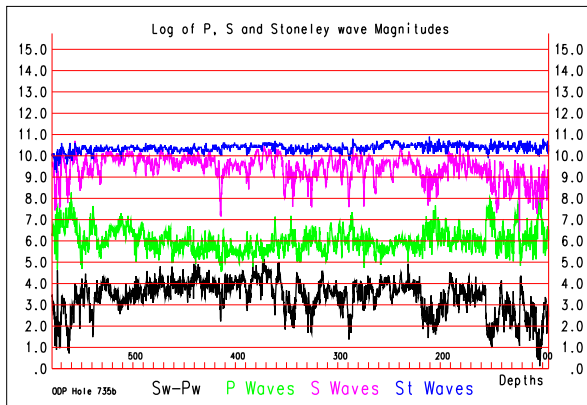
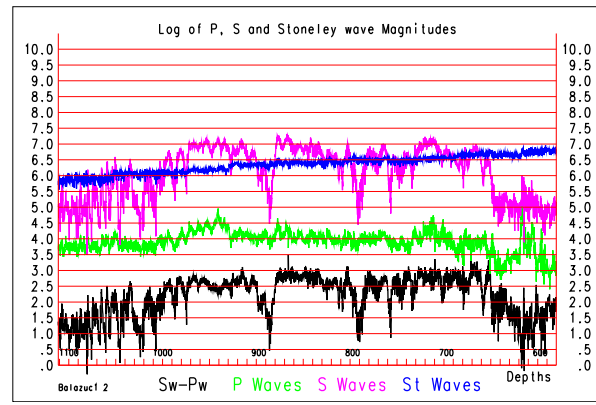
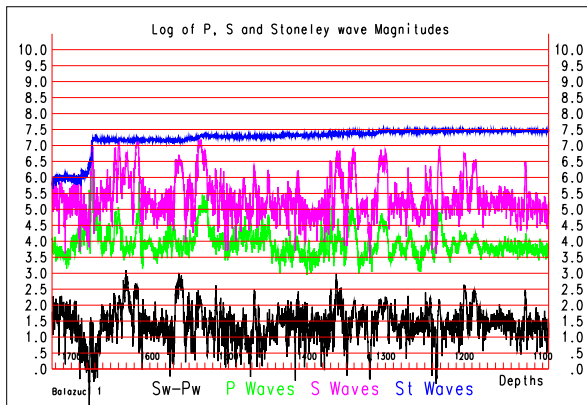
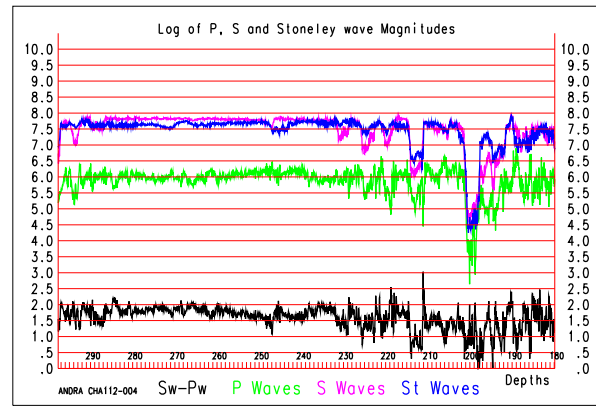
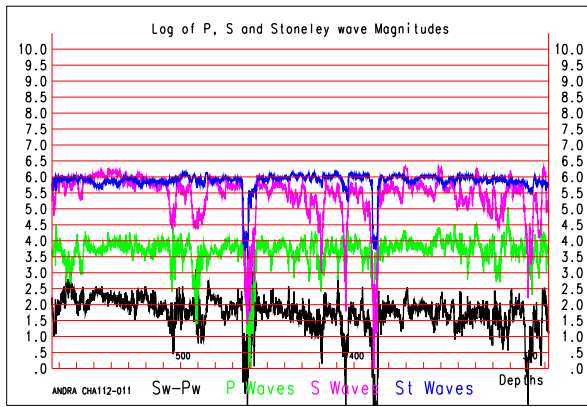


Plate I : Logarithms of the P wave and of the S wave magnitudes, called respectively Pw and Sw, with their differences called Sw - Pw, for all the boreholes mentioned in the text, with a diagram for each run. The logarithms of the corresponding Stoneley wave magnitudes are also plotted.