



HAL
open science

The origin of asymmetry : early polarisation of the Drosophila germline cyst and oocyte.

Jean-René Huynh, Daniel St Johnston

► **To cite this version:**

Jean-René Huynh, Daniel St Johnston. The origin of asymmetry: early polarisation of the Drosophila germline cyst and oocyte.. Current Biology - CB, 2004, 14, pp.R438-R449. 10.1016/j.cub.2004.05.040 . hal-00005658

HAL Id: hal-00005658

<https://hal.science/hal-00005658>

Submitted on 27 Jun 2005

HAL is a multi-disciplinary open access archive for the deposit and dissemination of scientific research documents, whether they are published or not. The documents may come from teaching and research institutions in France or abroad, or from public or private research centers.

L'archive ouverte pluridisciplinaire **HAL**, est destinée au dépôt et à la diffusion de documents scientifiques de niveau recherche, publiés ou non, émanant des établissements d'enseignement et de recherche français ou étrangers, des laboratoires publics ou privés.

The origin of asymmetry : early polarisation of the
***Drosophila* germline cyst and oocyte**

Jean-René Huynh¹, and Daniel St Johnston²

¹ Institut Jacques-Monod, CNRS, Universités Paris 6 et 7, 2, place Jussieu, F-75251
Paris. Cedex 05, France

² The Wellcome Trust/Cancer Research UK Gurdon Institute and Department of
Genetics, University of Cambridge, Tennis Court Rd, Cambridge CB2 1QR United
Kingdom

Corresponding author : e-mail : huynh@ijm.jussieu.fr

1. Abstract

The anterior-posterior axis of *Drosophila* is established before fertilisation when the oocyte becomes polarised to direct the localisation of *bicoid* and *oskar* mRNAs to opposite poles of the egg. Here we review recent results that reveal that the oocyte acquires polarity much earlier than previously thought, at the time when it acquires its fate. The oocyte arises from a 16 cell germline cyst, and its selection and the initial cue for its polarisation are controlled by the asymmetric segregation of a germline specific organelle called the fusome. Several different downstream pathways then interpret this asymmetry to restrict distinct aspects of oocyte identity to this cell. Mutations in any of the 6 conserved PAR proteins disrupt the early polarisation of the oocyte and lead to a failure to maintain its identity. Surprisingly, mutations affecting the control of the mitotic or meiotic cell cycle also lead to a failure to maintain the oocyte fate, indicating crosstalk between the nuclear and cytoplasmic events of oocyte differentiation. The early polarity of the oocyte initiates a series reciprocal signalling events between the oocyte and the somatic follicle cells that lead to a reversal of oocyte polarity later in oogenesis, which defines the anterior-posterior axis of the embryo.

Introduction

In many invertebrates and vertebrates, one or more of the body axes are already set up in the egg [1]. For instance, the anterior-posterior (AP) and dorsal-ventral (DV) axes in *Drosophila* are established during oogenesis by the asymmetric localisation of *bicoid*, *oskar*, and *gurken* mRNAs within the oocyte (the future egg) [2, 3]. The localisation of these transcripts depends on the polarised organisation of the oocyte

cytoskeleton, and therefore on the polarity of the oocyte itself. Recent data show that the first asymmetry that leads to this polarisation of the oocyte can be traced back earlier and earlier in oogenesis, ultimately leading to the very first steps of oogenesis, when the oocyte is determined.

The determination of the *Drosophila* oocyte has puzzled biologists for more than a century, because it arises from a syncytium that is formed by four rounds of incomplete division of a single germ cell, producing a germline cyst of 16 sister cells that share the same cytoplasm [4, 5]. Only one cell will become the oocyte, however, while the other 15 cells differentiate as nurse cells, which provide the oocyte with nutrients and cytoplasmic components. This means that the selection of the oocyte can be viewed as the polarisation of the cyst cytoplasm and membrane [6]. In addition, the oocyte may inherit some of its polarity from this cyst asymmetry. The determination and polarisation of the oocyte are therefore two intimately linked issues, which will be the main focus of this review

2. Review of *Drosophila* early oogenesis

The *Drosophila* ovary is composed of 16-20 ovarioles, each of which contains a chain of progressively more and more mature egg chambers [7]. New egg chambers are generated at the anterior of the ovariole in a region called the germarium, which has been divided into 4 regions according to the developmental stage of the cyst (Figure 1) Oogenesis begins in region 1, when a germline stem cell (GSC) divides asymmetrically to produce a posterior cystoblast, and a new GSC, which remains attached to the neighbouring somatic cells at the anterior (for a review see [8, 9]). The cystoblast then undergoes precisely four rounds of mitosis with incomplete

cytokinesis to form a cyst of 16 germline cells, which are interconnected by stable cytoplasmic bridges called ring canals. During these divisions, a cytoplasmic structure called the fusome anchors one pole of each mitotic spindle (Movie 1 and 2 in supplementary material), and therefore ensures that cells follow an invariant pattern of divisions [10]. This leads to the formation of a symmetric cyst with two cells with four ring canals, two with three ring canals, four with two and eight with one. This invariant pattern of divisions is important, as the oocyte always differentiates from one of the two cells with four ring canals, which are therefore called the pro-oocytes [11].

Once the 16 cell cyst has formed, it enters the region 2a of the germarium. At this stage, all the cells of one cyst look the same, but by the time it reaches region 2b, one cell will have differentiated as an oocyte. This differentiation can be followed with several types of marker (Figure 1): 1) Oocyte-specific proteins, such as BicD, Orb, Btz and Cup and mRNAs, such as *osk*, *BicD* and *orb* first concentrate in the two pro-oocytes, and come to lie on either side of the largest ring canal which connects them. By the end of region 2a, they accumulate in just the oocyte. [12-17]. Live imaging of GFP-labelled mitochondria reveals that they show a similar pattern of localisation to one cell [18]. 2) Microtubules (MT) are initially diffusely distributed throughout the cyst in association with the fusome, but their minus ends gradually become restricted to the future oocyte [19, 20]. 3) The centrioles appear to be inactivated after the last mitotic division, and they migrate along the fusome into the pro-oocytes, and then into the oocyte [18-20]. 4) Although the oocyte is the only cell to go through meiosis, electron microscopic studies show that the losing pro-oocyte also enters meiotic prophase, and reaches the pachytene stage before becoming a nurse cell, while the two cells with 3 ring canals reach the zygotene stage [21]. This

can be followed with antibodies against components of the synaptonemal complex (SC), a proteinaceous structure that forms between paired homologous chromosomes [22-24].

In region 2b, the cyst changes shape and becomes a one cell-thick disc that spans the whole width of the germarium. Oocyte-specific factors are now concentrated into the oocyte and an MTOC is clearly seen in this cell. At the same time, somatic follicle cells start to migrate and surround the cyst. As the cyst moves down to region 3 (also called stage 1), the mitochondria, centrosomes, Golgi vesicles, proteins and mRNAs organise at the anterior of the oocyte to form a typical Balbiani body [18-20]. At the same time, the cyst rounds up to form a sphere with the oocyte always lying at the posterior pole. The cyst then leaves the germarium into the vitellarium. The oocyte becomes polarised, as proteins, mRNAs, centrosomes and a subset of the mitochondria move to the posterior cortex, its DNA becomes highly condensed to form a structure called the karyosome, whereas the nurse cells start to polyploidise [25, 26].

3. Formation of a polarised cyst

3.1 Fusome and determination of the oocyte

Two main models have been proposed to explain how the oocyte is selected. One model is based on the symmetrical behaviour of the two pro-oocytes until mid-late region 2a, and proposes that there is a competition between the two pro-oocytes to become the oocyte. [21, 27]. The “winning” cell would become the oocyte, while the “losing” cell would revert to the nurse cell fate. A second model suggests that the

choice of the oocyte is biased by the establishment of some asymmetry as early as the first cystoblast division, which is maintained until the overt differentiation of the oocyte [6, 28]. The role played by the fusome and the analysis of its formation provide the strongest evidence in support of this model [28-32].

The fusome arises from a spherical structure called the spectrosome in the germline stem cell, which is made of small membranous vesicles kept together by components of the sub-membraneous cytoskeleton, such as α -spectrin, β -spectrin, and Hts (an adducin-like protein) [10, 33]. The cystoblast inherits one third of the fusome from the GSC [30]. When the cystoblast divides, one pole of the spindle is anchored by the inherited fusome (the “original” fusome), while a new fusome plug forms in the arrested ring canal, at the opposite pole of the cell [29, 32]. The two fusomes then come together to fuse, so that one cell contains the “original” fusome plus half of the plug, whereas the other cell only retains the other half of the fusome plug (Figure 2). This asymmetric behaviour of the fusome is then repeated during the next three divisions [32]. The oldest cell therefore retains the “original” fusome and accumulates three more fusome plugs. Thus, this cell has more fusome than all of the other cells and can be identified throughout the divisions.

Unfortunately, most of the fusome has already degenerated by the time oocyte-specific proteins such BicD or Orb accumulate in a single cell in late region 2a. However, the preferential accumulation of the centrosomes and *osk*, and *orb* mRNAs in one cell can be detected earlier in region 2a, and this is always the cell with the most fusome [18, 19]. This is particularly obvious in *egl* and *BicD* mutants, in which the fusome perdures longer, where the centrosomes clearly accumulate in the cell with largest piece of fusome remnant [20]. These data strongly suggest that the “original” fusome marks the future oocyte, in support of the second model. It does not

rule out the possibility that both pro-oocytes can become the oocyte, but shows that if there is a competition, it is strongly biased.

What is the link between the asymmetric inheritance of the fusome and the specification of the oocyte? The simplest model is that an oocyte-determining factor is asymmetrically distributed at each division with the “original” fusome into the future oocyte. It has been proposed that one of the cystoblast centrioles could stay in contact with the fusome during each division, and because of the semi-conservative replication of the centrosome, could be inherited by the oocyte [6]. Consequently, oocyte determinants could co-segregate with this centriole. Indeed, it has recently been shown that such a mechanism mediates the segregation of *dpp* and *eve* mRNAs into specific cells during the asymmetric divisions of the early *Ilyanassa obsoleta* embryo [34]. Alternatively, the oocyte could inherit more of some protein or activity associated with the fusome, and this early bias could initiate a feedback loop that induces the transport of oocyte determinants towards this cell.

3.2 The fusome and the polarisation of the oocyte.

It is not known what drives the movement of the fusome plugs, but several lines of evidence suggest that it is microtubule-dependent. Mutations in the MT minus-end motor, dynein, or in its associated regulator, Lis1, affect the formation of the fusome, which appears less branched, and mutant cysts therefore contain fewer than 16 cells [20, 31, 35]. It is not yet clear, however, if these mutations affect the movement and formation of the plugs, or the anchoring of the mitotic spindles to the fusome, or both. Because of the centripetal gathering of the ring canals, the cyst adopts a “rosette” shape [4]. In this configuration, the distance between the ring

canals is minimized [32]. This shape is later on stabilised by the formation of adherens junctions around the ring canals, which can be visualised in EM sections and by the localisation of Armadillo, E-Cadherin and Bazooka/Par-3 proteins ([36] and A.P. Mahowald, personal communication).

It is reasonable to assume that as early as the two-cell stage, the central fusome occupies a fixed position, while the plugs move toward it. The fusome therefore marks the “inner” part of each cell. In particular, in region 2b, the fusome remnant is always located at the anterior of the oocyte, where all the cytoplasmic components accumulate to form a Balbiani body [18]. The fusome therefore marks the future anterior side of the oocyte, suggesting that the anterior-posterior polarity of the oocyte is inherited from the polarised cyst divisions.

In conclusion, the fusome marks the future oocyte and also the future anterior side of the oocyte, strongly suggesting that it plays a direct role in the specification and polarisation of the oocyte. This has been difficult to prove, however, because of the earlier functions of the fusome. For example, *hts* and *α -spectrin* mutants lack a fusome and often fail to specify an oocyte, but the divisions also become asynchronous and randomly-oriented, resulting in cysts with a variable number of cells, and this latter defect could be the primary cause of the failure in oocyte determination [10, 33, 37].

4. The read-out of the fusome polarity : nurse cells vs oocyte differentiation

Although the oocyte appears to be selected early in region 1, its identity only becomes obvious two days later, in late region 2a. The cyst differentiation in region 2a is gradual and two-fold. In the cytoplasm, the oocyte accumulates specific components and organelles, and in the nucleus, it enters meiosis and arrests in prophase I. Recent results have revealed that there are at least three pathways to restrict different aspects of oocyte identity to one cell.

4.1 Cytoplasmic differentiation

One of the main features of cyst differentiation is the formation of a microtubule array that is polarised towards the oocyte and extends through the ring canals into the other cells of the cyst [38]. Since the MT form along the fusome, this polarisation has been suggested to be a direct read out the fusome polarity [19]. Indeed, the MTs are essential for the determination of the oocyte, since treatments with the microtubule depolymerising drug, colchicine, result in egg chambers with 16 nurse cells and no oocyte [39]. Furthermore, none of the oocyte-specific proteins or mRNAs are asymmetrically localised within these cysts [38]. Thus, the transport of these proteins and mRNAs is MT-dependent, suggesting that the formation of the polarised MT cytoskeleton precedes and predicts the specification of the oocyte.

Although colchicine disrupts the localisation of proteins and mRNAs to the oocyte, it does not disrupt the migration of the centrioles or the restriction of meiosis

to one cell [20, 22]. Since microtubule-destabilising drugs like colchicine only affect dynamic microtubules, one possibility is that the centrioles migrate along stable microtubules that are not affected by these treatments. In support of this view, it has recently been found that antibodies against acetylated tubulin, a marker for stable microtubules, label a population of microtubules associated with the fusome [40]. Furthermore, mutations in the *Drosophila* spectroplakin, Shot disrupt these stable microtubules without affecting the fusome itself, and this blocks the migration of the centrioles, as well as mRNAs and proteins, into one cell. Shot is a component of the fusome, and contains a GAS domain, which has been shown to bind and stabilise microtubules. This suggests a model in which Shot assembles stable microtubules on the fusome, along which the centrioles migrate. The situation is less clear for the restriction of meiosis, as it is only partially disrupted in *shot* germline clones. This raises the possibility that a third MT-independent pathway reads the fusome polarity directly to control the entry into meiosis (Figure 3).

Independent evidence for three distinct pathways that restrict different aspects of oocyte identity comes from the analysis of the phenotypes of *Bicaudal-D* (*BicD*) and *egalitarian* (*egl*) mutants. Egl and BicD proteins are part of the same complex *in vivo*, and null mutations in either gene give rise to egg chambers with 16 nurse cells and no oocyte, without affecting the asymmetric distribution of the fusome [20, 32, 41-43]. Oocyte-specific proteins and mRNAs remain evenly distributed within mutant cysts, and this defect correlates with a failure to polarise the MT cytoskeleton, as observed with GFP-tubulin and several MT minus-end markers. However, the migration of the centrioles is normal in *BicD* and *egl* null mutants, indicating that they act downstream of the initial asymmetry that selects the oocyte[20]. This

provides further evidence that the movement of the centrioles occurs by a distinct mechanism from the transport of mRNAs and proteins.

Although *egl* and *BicD* cause identical defects on mRNA and protein localisation and MT organisation, they have opposite effects on meiosis. In *egl* mutants, all 16 cells of the cyst enter meiosis and reach the full pachytene stage, before they revert to the nurse cell fate [22, 27]. In contrast, none of the cells enter meiosis in *BicD* mutants, and they all become nurse cells directly [22]. Thus, an upstream asymmetry must regulate the activity of the BicD/ Egl complex to promote meiosis in the oocyte, and inhibit it in the nurse cells.

In addition to its role in oocyte determination, the BicD/Egl complex is required for the localisation of *oskar*, K10 and *gurken* mRNAs in the stage 9-10 oocyte, and for the apical transport of *wingless* and pair rule transcripts in the syncytial blastoderm embryo [43-45]. Injection experiments in the embryo have demonstrated that BicD and Egl are required to recruit the dynein motor complex to mRNAs, so that it can transport them to the apical cytoplasm [45, 46]. Consistent with this, a conserved N-terminal domain of the mammalian homologues of BicD has been shown to bind the dynamitin subunit of the dynein/dynactin complex and to activate dynein motility, while a C-terminal region binds to GTP-Rab6, and acts as an adaptor for the dynein-dependent transport of Rab6 positive Golgi membranes [47-49].

Very recent results indicate that Egl also plays a role in coupling cargoes to the dynein motor complex, as a newly identified C-terminal domain of the protein has been shown to bind the dynein light chain [50]. Furthermore, *egl* mutations that

specifically disrupt this binding site abolish mRNA and protein localisation to the oocyte, as do mutants in the *dynein light chain (dlc)* itself. These results suggest that Egl is an essential adaptor that links the dynein motor complex to the mRNAs and proteins that are transported into the oocyte. Surprisingly, in contrast to the *egl* null mutations, neither the *egl* alleles that disrupt the interaction with the Dlc nor *dlc* mutants affect the restriction of meiosis to one cell. These data strongly support the idea that Egl has two separable functions in oocyte selection, an early dynein-independent function that controls meiosis, and a later function in the dynein-dependent transport of mRNAs and proteins into the oocyte.

Germline clones mutant for specific alleles of the dynein-dynactin complex, such as *Dhc64C*⁴⁻¹⁹, *Lis1*^{E415}, and *dynamitin*^{K16109} have similar phenotypes to *BicD* and *egl*, as they give rise to egg chambers with 16 nurse cells and no oocyte [20, 31, 35, 51, 52]. However, the requirements for the BicD-Egl and dynein-dynactin complexes are not identical during early oogenesis. Firstly, the Dynein heavy chain (Dhc) and Lis1 are required during the cyst divisions in region 1, whereas BicD and Egl are not. Secondly, unlike BicD and Egl, Dhc is required for the migration of the centrioles into the oocyte, as well as the localisation of meiosis and oocyte-specific mRNAs and proteins [20]. This observation suggests that dynein may transport the centrioles into the oocyte along stable MTs, in addition to moving mRNAs and proteins along colchicine-sensitive MTs. These results need to be interpreted with caution, however, as *Dhc* mutants also disrupt the fusome, which starts to fragment when the cyst enters region 2a, and this maybe the primary cause of the total lack of polarisation in *dynein* germline clones [20].

In summary, although it was originally thought that the oocyte was specified by the transport of determinants along a single polarised microtubule cytoskeleton, recent results have uncovered a more complex reality, in which multiple processes function in parallel to restrict different aspects of oocyte identity to one cell. However, all of these probably depend on the initial polarity of the fusome, which may act in three distinct ways to select the oocyte: 1) The fusome organises a polarised network of dynamic MT that direct the localisation of oocyte-specific proteins and mRNAs into one cell, presumably through the dynein-dependent transport of cargoes that are linked to the motor through BicD, Egl and the dynein light chain. 2) The fusome also nucleates stable MT that are associated with Shot, and the centrioles may migrate along these in a process that could also involve dynein. 3) Finally, the fusome appears to regulate a dynein light chain and MT-independent activity of the BicD/Egl complex that controls entry into meiosis. Although the molecular mechanisms are only emerging, these results also suggest an exciting link between the oocyte differentiation, vesicular trafficking and mRNA transport.

4.2 Nuclear differentiation

The differentiation of the oocyte is marked by several cell cycle changes and as the future female gamete, the oocyte is the only cell to complete meiosis. In contrast, the nurse cells go through several rounds of endoreplication without mitosis to become highly polyploid. Interestingly, recent results shows that cell cycle regulators also control the identity of the oocyte.

4.2.1 Cell-cycle regulators and maintenance of the oocyte fate.

The first link between the control of the cell cycle and the identity of the oocyte came from the analysis of mutations in *encore*, which encodes a novel protein with a putative RNA-binding domain [53, 54]. At 25°C, one group of alleles induces precisely one more division in the germline, producing cysts with 32 cells and one oocyte. At 18°C, a second group of alleles produce cysts with 16 polyploid nurse cells and no oocyte. However, in these cysts *oskar* mRNA initially accumulates into only one cell, but then diffuses away [53]. This demonstrates that the initial selection of the oocyte is not affected by *encore* mutations, and defines a novel step in the determination of the oocyte, which is the maintenance of its fate. Encore interacts with a splicing factor called Half-pint in yeast two-hybrid assays, and mutations in *half-pint* produce cysts that go through one less division and contain only 8 cells, which sometimes all become nurse cells [55]. Interestingly, Half-pint regulates the splicing of *otu* mRNA, and mutations in *otu* also affect the number of cyst divisions, and the determination of the oocyte [56, 57]. Although these genes are not direct regulators of the cell cycle, they reveal a link between the regulation of the number of cyst divisions and the determination of the oocyte. The lack of an oocyte does not seem to be a consequence of the abnormal number of divisions, however, as the two phenotypes are produced by different alleles or under different conditions. The same is true for mutations in the transcription factor *stonewall*. A high percentage of *stwl* mutant cysts contain 16 polyploid cells, whereas a lower percentage go through one extra division to produce 32 cells cysts [58]. Interestingly, *stwl* also affects the maintenance of the oocyte fate rather than its selection, since *orb* mRNA initially accumulates normally into one cell.

Direct regulators of the cell cycle also participate in the determination of the oocyte. Over-expression of *string/cdc25* inhibits the last cyst division to produce cysts with 8 cells, 50% of which lack an oocyte [59]. A very similar phenotype is produced by loss-of-function mutations in *tribbles*, which is a negative regulator of *string*[59]. In contrast, overexpression of *tribbles* induces a fifth division to produce cysts with 32 cells and 2 oocytes. Surprisingly, these effects are the opposite of those observed in other tissues, where over-expression of *string* and mutants in *tribbles* induce extra mitoses, suggesting that there is something different about the regulation of mitosis in the female germ line.

Mutants in cyclin E, which regulates entry into S-phase, can also affect the number of cyst divisions: a subset of mutant egg chambers contain only 8 cells (7 nurse cells and one oocyte), and another subset have 16 cells, with 2 or 3 cells having oocyte-like nuclear features, such as low ploidy and condensed chromatin [60]. This phenotype is dominantly suppressed by mutations in the cyclin-dependent kinase inhibitor, *dacapo* (*dap*) [24]. Furthermore, egg chambers homozygous mutant for *dap* contain 16 polyploid nurse cells. Interestingly, these egg chambers initially restrict the SC, Orb and BicD into one cell, but proteins and mRNAs diffuse away from the oocyte at stage 1, instead of moving to the posterior pole. Thus, *dap* is also required for the maintenance of the oocyte fate, rather than its specification [24]. One possible explanation for this phenotype is that the elevated levels of *cycE* in *dap* mutants cause the oocyte to undergo endocycles and become polyploid, and that the oocyte loses its cytoplasmic differentiation as a consequence. Thus, an abnormal cell cycle state blocks the nuclear and cytoplasmic differentiation of the oocyte, and induces it to revert to the nurse cell fate, much like the losing pro-oocyte does normally.

The *spindle* genes: the meiotic checkpoint and RNA silencing

Mutants in the spindle group genes affect the formation of the A/P and D/V axes, and delay the specification of the oocyte [61-64]. This delay is characterised by an arrest in the formation of the karyosome, a mispositioning of the oocyte, a failure to localise the oocyte cytoplasmic components to the posterior pole, and the differentiation of the losing pro-oocyte as a second oocyte. These defects are transient, however, and there is usually only one oocyte at later stages, indicating that the selection of the oocyte is not abolished but merely slowed down [22, 64]. Despite the puzzling pleiotropy of phenotypes, the molecular characterisation of some of the genes has revealed a common cause. The spindle-class comprises the 5 *spindle* genes, *spn-A*, *-B*, *-C*, *-D*, *-E* and *okra*, *aubergine*, *vasa*, and *maelstrom* [41, 61, 65]. *spn-A*, *-B*, *-D* and *okra* encode homologues of yeast RAD51 and RAD54, which are involved in repairing dsDNA breaks [66-68]. Furthermore, the patterning defects of *spn-A*, *-B*, *-C* and *-D* and *okra* mutants can be suppressed by mutations in *meiW68*, which block the formation of the dsDNA breaks that initiate recombination, and also by mutations in *meiP41* or *chk2*, which are components of the DNA damage checkpoint pathway [68, 69]. Thus, the primary defect in these *spindle* mutations appears to be a failure to repair the dsDNA breaks formed during recombination, and the patterning defects and most probably the delay in the oocyte differentiation are a consequence of the activation of a meiotic checkpoint pathway (reviewed in [70, 71]).

Not all of the spindle genes are involved in the repair of dsDNA breaks, and it has recently emerged that a second class, comprising *spindle-E*, *maelstrom*, *aubergine*, and the newly-identified gene, *armitage* are all required for translational silencing by micro-RNAs, and RNA interference [72-76]. Mutants in these genes produce a similar spectrum of phenotypes to the other spindle mutants, including a

delay in the selection and polarisation of the oocyte, while *spindle-E* and *maelstrom* mutants have also been found to cause premature cytoplasmic streaming in the oocyte at stage 9 [77] [78-80]. Interestingly, all of these mutants also cause the precocious translation of *oskar* mRNA in the nurse cells, strongly suggesting that *oskar* is regulated by micro RNAs [76]. These results indicate that a number of key processes in development of the germline cysts are regulated by post-transcriptional gene silencing by micro RNAs, although the relevant mRNA targets in early oogenesis have not yet been identified.

5. Early polarisation of the oocyte

When a germline cyst reaches region 2b, the oocyte specific proteins and mRNAs, as well as the centrosomes and mitochondria have been transported along the fusome into the presumptive oocyte. These components remain associated with the fusome remnants and therefore accumulate at the anterior of the oocyte to form a Balbiani body [18]. When the oocyte moves through region 3, all of the components of the Balbiani body disassociate and move around the oocyte nucleus to form a tight crescent at the posterior cortex. This movement is the first sign of anterior-posterior polarity in the oocyte, and is a crucial step in the maintenance of its identity [26, 81]. The importance of this polarisation step was first demonstrated by the analysis of a null mutation in the *par-1* gene, which specifically disrupts this process [26]. PAR-1 is the *Drosophila* homologue of *C. elegans* PAR-1, a serine/threonine kinase which is required for the polarisation of the *C. elegans* zygote [82]. In *Drosophila*, *par-1* mutant egg chambers contain 16 nurse cells and lack an oocyte [26, 83]. The oocyte appears to be selected normally, as the centrosomes, the SC, and Orb accumulate in one cell in region 2b/3 [26]. These components do not translocate to the posterior of

the oocyte in region 3, however, and the oocyte de-differentiates as a nurse cell, by exiting meiosis and becoming polyploid.

AP polarity in *C. elegans* also requires a number of other PAR proteins, including the PDZ-domain proteins, PAR-3, and PAR-6, which form a complex with atypical protein kinase C at the anterior of the one cell zygote, the RING finger protein, PAR-2, which is required to recruit PAR-1 to the posterior cortex, and the 14-3-3 homolog, PAR-5, and the homologue of the mammalian kinase LKB1, PAR-4, which are not localised [84] [85-89]. It has subsequently been found that the *Drosophila* homologues of all of these proteins, except for PAR-2, which is not conserved, are also required for the polarisation of the *Drosophila* oocyte and the maintenance of its fate [36, 83, 90, 91]. There is therefore a striking homology between the earliest polarisation of the AP axis in worms and flies.

The fact that mutations in the *par* genes, widely involved in cell polarisation, and in cell cycle regulators such as *dacapo* (see above), produce strikingly similar phenotypes, demonstrates that the nuclear and cytoplasmic development of the oocyte are intimately linked, and that stage 1 (region 3) of oogenesis is a crucial developmental checkpoint (Figure 3). If, the oocyte is not in the appropriate cell cycle state by this stage, or if it fails to polarise along its anterior-posterior axis, it will revert to the nurse cell fate.

The Par proteins define and maintain complementary anterior and posterior cortical domains in the *C. elegans* embryo, with the PAR-3/PAR-6/aPKC complex localising to the anterior cortex, and PAR-1 and PAR-2 to the posterior (for a review, see [92]). The spatial relationship between the Par proteins in the *Drosophila* oocyte

appears more complex, as most antibodies and GFP fusions place Bazooka (PAR-3) and aPKC at the adherens junctions that form around the ring canals, and PAR-1 on the fusome [36, 93]. However, isoform specific antibodies detect Bazooka (PAR-3) at the anterior of the oocyte and PAR-1 at the posterior pole [94]. Furthermore, these localisations appear to be interdependent, as Baz extends to the posterior in *par-1* null cysts, and PAR-1 remains anterior in *baz* null clones. Recent data have begun to elucidate the molecular mechanisms that may underlie these mutually exclusive localisations. PAR-1 has been found to phosphorylate two sites in Bazooka (Par-3) to recruit 14-3-3 (Par-5), which then disrupts the BAZ/Par-6/aPKC complex by blocking BAZ oligomerization and its interaction with aPKC [95, 96]. Furthermore, mammalian aPKC can phosphorylate PAR-1 to inhibit its activity and localisation to the plasma membrane [97]. Thus, mutual antagonism between the BAZ/PAR-6/aPKC complex and PAR-1/14-3-3 may provide general mechanism to establish complementary cortical domains in polarised cells, including the early *Drosophila* oocyte.

One likely target of the PAR proteins in the *Drosophila* oocyte is the organisation of the microtubule cytoskeleton [98]. In *par* null mutant oocytes, the MT minus-ends fail to switch from the anterior of the nucleus to the posterior cortex in region 3 [26, 90, 91, 93, 94]. Furthermore, the polarity defects of the *par* mutants can be phenocopied by mild colchicine treatments[94]. In addition, several of the *par* proteins appear to control MT organisation later in oogenesis, since stage 8-9 oocytes mutant for *par-1*, *lkb1* and *14-3-3 ϵ* have a disorganised MT cytoskeleton, in which the minus-ends of MTs lie all around the oocyte cortex, and the plus-ends point toward the centre of the oocyte, instead of the posterior pole[90, 91, 98]. How direct the

regulation of the MTs by the *par* cassette is remains unknown. Indeed, BicD, Egl or Dynein could also be targets as they give very similar phenotypes to *par* mutations. In oocytes mutant for hypomorphic alleles of *BicD* or *Dhc*, proteins accumulate into one cell, but fail to translocate to the posterior [22, 94]. Similarly, in *BicD* and *egl* null mutant oocytes, the centrosomes remain at the anterior of a pseudo-oocyte [20]. It will therefore be very informative to work out the relationships between the Par cassette, the BicD/Egl/Dynein complex and the microtubules.

Upstream regulators remain more elusive. In *C. elegans*, the sperm entry provides an extrinsic cue that triggers the *par*-dependent polarisation of the embryo [92]. This cannot be the case in the germarium, as fertilisation only occurs at the end of oogenesis about a week later. In other cell-types, such as epithelial cells, the localisation of the PAR3/PAR6/aPKC complex is regulated by an apical complex of Crumbs and Stardust proteins, and the lateral proteins, Discs Large, Scribble, and Lethal Giant Larvae [99, 100]. Oocyte polarity appears to be regulated differently, however, as this early polarisation step is unaffected in germline clones of null alleles of all these genes (J-R H and Uwe Irion unpublished data). These results suggest that the polarisation of the oocyte may rely not only on intrinsic mechanisms, but may also require an extrinsic signal. It is therefore interesting to note that the oocyte repolarisation occurs exactly when the follicle cells first surround and contact the oocyte. A signal from the follicle cells might therefore induce the reorganisation of oocyte polarity in region 3. In support of this hypothesis, *Dystroglycan*, which encodes a receptor for multiple extracellular matrix molecules, has been shown to be required in the germline for the repolarisation of the oocyte at this precise stage [101].

In conclusion, the fusome establishes an axis of polarity as early as region 1, but this polarity is reorganised in a *par*-dependent manner in region 3. This is not the

final polarity of the oocyte, however, as it repolarises at stage 7 to define the AP axis of the embryo, raising the question of how these two polarisations are related.

6. The positioning of the oocyte links the early and late polarisation of the egg chamber

The oocyte acquires its final anterior-posterior polarity in a two step process. First, *gurken* mRNA is translated at the posterior of the oocyte and signals to the adjacent terminal follicle cells to induce them adopt a posterior rather than an anterior fate [102, 103]. These posterior cells then send an unknown signal back to the oocyte at stage 7, which induces a repolarisation of the MT cytoskeleton, which directs the transport of *bicoid* mRNA to the anterior of the oocyte and of *oskar* mRNA to the posterior. This chain of polarisation depends of at least two events taking place in the germarium.

Firstly, *gurken* mRNA must be localised at the posterior of the oocyte for Gurken protein to signal to the adjacent follicle cells. Since *gurken* mRNA is part of the Balbiani body, its posterior localisation is a consequence of the *par*-dependent repolarisation of the oocyte in region 3. The posterior localisation of *gurken* mRNA therefore provides a crucial link between the early polarisation events taking place in the germarium and the final AP polarity acquired at stage 7. This is best demonstrated by the phenotype of *maelstrom* mutants, in which the oocyte identity is maintained but *gurken* mRNA fails to switch from the anterior to the posterior of the oocyte [78, 79]. As a consequence, all the subsequent polarisation steps are disrupted.

Secondly, the oocyte needs to be localised at the posterior of the egg chamber in contact with the terminal follicle cells that are competent to receive the Gurken signal [104]. Indeed, mutants that disrupt the movement of the oocyte to the posterior

of the cyst abolish all late AP asymmetries, and give rise to symmetric egg chambers with two sets of anterior follicle cells, and oocytes that localise *bicoid* mRNA to both poles and *oskar* mRNA to the centre. This invariant localisation of the oocyte is due to an up-regulation of the DE-Cadherin in the oocyte and in somatic cells that contact the posterior of the oocyte [105, 106]. The oocyte therefore out-competes the nurse cells for adhesion to these posterior follicle cells, and is pulled to the posterior when the cyst changes shape on entering region 3. Thus, the AP axis originates from the adhesiveness of the posterior follicle cells, raising the question of how these cells are specified and positioned.

The role of the posterior follicle cells in oocyte positioning raises a paradox. On the one hand, the anterior and posterior follicle cells are thought to be equivalent until Gurken signalling breaks the symmetry. On the other hand, these cells must already be different in the germarium to up-regulate Cadherin to position the oocyte. This paradox has recently been resolved with the discovery that the early difference between the anterior and posterior follicle cells is only temporary, and arises from a series of inductive signals that are transmitted from the adjacent older egg chamber to the posterior follicle cells of the younger, anterior egg chamber [107]. Each cyst signals through Delta to induce the differentiation of the anterior and posterior pairs of polar follicle cells at each end of the egg chamber, but the anterior pair differentiate much earlier than the posterior ones. These anterior polar cells turn on Unpaired, the ligand for the JAK/STAT pathway, which induces the adjacent anterior polar/stalk follicle cell precursors to become stalk cells, and it is thought that these cells then up-regulate Cadherin to adhere to the oocyte of the adjacent younger egg chamber. The AP axis is therefore established by a relay mechanism in which each cyst induces the positioning of the oocyte of the next cyst.

These last results emphasize the importance of the communication between the germline and the somatic cells to coordinate the formation of an egg chamber. Signals from the germline to the somatic cells control the migration and differentiation of the follicle cells, whereas signals from the somatic cells to the germline are required to position and polarise the oocyte.

7. Conclusion and perspectives

Although we have focused on *Drosophila* oogenesis in this review, the formation of a germline cyst seems widely conserved throughout animal kingdom [108]. In particular, the first steps of *Drosophila* oogenesis show a striking similarity to the early steps of *Xenopus* oogenesis (for details see Figure 4 and legends and [109]). Furthermore, PAR-6b has recently been found to localise to the animal pole of unfertilised mouse eggs, suggesting that PAR proteins may play a conserved role in oocyte polarity in mammals [110]. Thus, the eggs of many species, including vertebrates, may be polarised much earlier than previously thought, and the *Drosophila* egg chamber will provide a useful paradigm for understanding this process.

8. Acknowledgments :

The writing of this review was greatly helped by many people in the field, who openly discussed ideas and/or shared results before publication. In particular, we are very grateful to the following people : Adelaide Carpenter, David Ish-Horowicz, Scott

Hawley, Mary Lilly, Ruth Lehmann, Anthony Mahowald, Scott Page and Allan

Spradling. J.-R. H. is supported by the EMBO and D. St. J. by the Wellcome Trust.

9. References :

1. Gerhart, J., and Kirschner, M. (1997). Cells, embryos and evolution (Blackwell Science).
2. van Eeden, F., and St Johnston, D. (1999). The polarisation of the anterior-posterior and dorsal-ventral axes during *Drosophila* oogenesis. *Curr Opin Genet Dev* 9, 396-404.
3. Riechmann, V., and Ephrussi, A. (2001). Axis formation during *Drosophila* oogenesis. *Curr Opin Genet Dev* 11, 374-383.
4. Telfer, W. (1975). Development and physiology of the oocyte-nurse cell syncytium. *Adv. Insect Physiol.* 11, 223-319.
5. Deng, W., and Lin, H. (2001). Asymmetric germ cell division and oocyte determination during *Drosophila* oogenesis. *Int Rev Cytol* 203, 93-138.
6. Theurkauf, W.E. (1994). Microtubules and cytoplasm organisation during *Drosophila* oogenesis. *Dev. Biol.* 165, 352-360.
7. Spradling, A. (1993). Developmental genetics of oogenesis. In *The Development of Drosophila melanogaster*, Volume 1, 1 Edition, M. Bate and A. Martinez-Arias, eds. (New York: Cold Spring Harbor Laboratory press), pp. 1-70.
8. Spradling, A., Drummond-Barbosa, D., and Kai, T. (2001). Stem cells find their niche. *Nature* 414, 98-104.
9. Gonzalez-Reyes, A. (2003). Stem cells, niches and cadherins: a view from *Drosophila*. *J Cell Sci* 116, 949-954.
10. Lin, H., Yue, L., and Spradling, A.C. (1994). The *Drosophila* fusome, a germline-specific organelle, contains membrane skeletal proteins and functions in cyst formation. *Development* 120, 947-956.
11. Buning, J. (1994). *The Insect Ovary : Ultrastructure, Previtellogenic Growth and Evolution* (New-York: Chapman and Hall).
12. Suter, B., Romberg, L.M., and Steward, R. (1989). *Bicaudal-D*, a *Drosophila* gene involved in developmental asymmetry: localized transcript accumulation in ovaries and sequence similarity to myosin heavy chain tail domains. *Genes Dev.* 3, 1957-1968.
13. Wharton, R.P., and Struhl, G. (1989). Structure of the *Drosophila Bicaudal-D* protein and its role in localizing the posterior determinant *nanos*. *Cell* 59, 881-892.
14. Lantz, V., Chang, J., Horabin, J., Bopp, D., and Schedl, P. (1994). The *Drosophila orb* RNA-binding protein is required for the formation of the egg chamber and establishment of polarity. *Genes & Development.* 8, 598-613.
15. van Eeden, F.J.M., Palacios, I.M., Petronczki, M., Weston, M.J.D., and St Johnston, D. (2001). Barentsz is essential for the posterior localization of *oskar* mRNA and colocalizes with it to the posterior. *J. Cell Biol.* 154, 511-524.

16. Keyes, L.N., and Spradling, A.C. (1997). The *Drosophila* gene *fs(2)cup* interacts with *otu* to define a cytoplasmic pathway required for the structure and function of germ-line chromosomes. *Development* *124*, 1419-1431.
17. Ephrussi, A., Dickinson, L.K., and Lehmann, R. (1991). *oskar* organizes the germ plasm and directs localization of the posterior determinant *nanos*. *Cell* *66*, 37-50.
18. Cox, R.T., and Spradling, A.C. (2003). A Balbiani body and the fusome mediate mitochondrial inheritance during *Drosophila* oogenesis. *Development* *130*, 1579-1590.
19. Grieder, N.C., de Cuevas, M., and Spradling, A.C. (2000). The fusome organizes the microtubule network during oocyte differentiation in *Drosophila*. *Development* *127*, 4253-4264.
20. Bolivar, J., Huynh, J.R., Lopez-Schier, H., González, C., St Johnston, D., and González-Reyes, A. (2001). Centrosome migration into the *Drosophila* oocyte is independent of *BicD*, *egl* and of the organisation of the microtubule cytoskeleton. *Development* *128*, 1889-1897.
21. Carpenter, A. (1975). Electron microscopy of meiosis in *Drosophila melanogaster* females. I Structure, arrangement, and temporal change of the synaptonemal complex in wild-type. *Chromosoma* *51*, 157-182.
22. Huynh, J.R., and St Johnston, D. (2000). The role of *BicD*, *Egl*, *Orb* and the microtubules in the restriction of meiosis to the *Drosophila* oocyte. *Development* *127*, 2785-2794.
23. Page, S.L., and Hawley, R.S. (2001). *c(3)G* encodes a *Drosophila* synaptonemal complex protein. *Genes Dev* *15*, 3130-3143.
24. Hong, A., Lee-Kong, S., Iida, T., Sugimura, I., and Lilly, M.A. (2003). The *p27(cip/kip)* ortholog *dacapo* maintains the *Drosophila* oocyte in prophase of meiosis I. *Development* *130*, 1235-1242.
25. Dej, K.J., and Spradling, A.C. (1999). The endocycle controls nurse cell polytene chromosome structure during *Drosophila* oogenesis. *Development* *126*, 293-303.
26. Huynh, J.R., Shulman, J.M., Benton, R., and St Johnston, D. (2001). *PAR-1* is required for the maintenance of oocyte fate in *Drosophila*. *Development* *128*, 1201-1209.
27. Carpenter, A. (1994). *egalitarian* and the choice of cell fates in *Drosophila melanogaster* oogenesis. In *Germline development*, J. Marsh and J. Goode, eds. (Chichester: John Wiley & Sons), pp. 223-246.
28. Lin, H., and Spradling, A.C. (1995). Fusome asymmetry and oocyte determination in *Drosophila*. *Dev. Gen.* *16*, 6-12.
29. Storto, P., and King, R. (1989). The role of polyfusomes in generating branched chains of cystocytes during *Drosophila* oogenesis. *Dev Genet* *10*, 70-86.
30. Deng, W., and Lin, H. (1997). Spectrosomes and fusomes anchor mitotic spindles during asymmetric germ cell divisions and facilitate the formation of a polarized microtubule array for oocyte specification in *Drosophila*. *Dev. Biol.* *189*, 79-94.
31. McGrail, M., and Hays, T.S. (1997). The microtubule motor cytoplasmic dynein is required for spindle orientation during germline cell divisions and oocyte differentiation in *Drosophila*. *Development* *124*, 2409-2419.

32. de Cuevas, M., and Spradling, A.C. (1998). Morphogenesis of the *Drosophila* fusome and its implications for oocyte specification. *Development* *125*, 2781-2789.
33. de Cuevas, M., Lee, J.L., and Spradling, A.C. (1996). α -spectrin is required for germline cell division and differentiation in the *Drosophila* ovary. *Development* *124*, 3959-3968.
34. Lambert, J.D., and Nagy, L.M. (2002). Asymmetric inheritance of centrosomally localized mRNAs during embryonic cleavages. *Nature* *420*, 682-686.
35. Liu, Z., Xie, T., and Steward, R. (1999). *Lis1*, the *Drosophila* homolog of a human lissencephaly disease gene, is required for germline cell division and oocyte differentiation. *Development* *126*, 4477-4488.
36. Huynh, J.-R., Petronczki, M., Knoblich, J.A., and St Johnston, D. (2001). Bazooka and PAR-6 are required with PAR-1 for the maintenance of oocyte fate in *Drosophila*. *Current Biology* *11*, 901-906.
37. Yue, L., and Spradling, A. (1992). hu-li tai shao, a gene required for ring canal formation during *Drosophila* oogenesis, encodes a homolog of adducin. *Genes Dev.* *6*, 2443-2454.
38. Theurkauf, W., Alberts, M., Jan, Y., and Jongens, T. (1993). A central role for microtubules in the differentiation of *Drosophila* oocytes. *Development* *118*, 1169-1180.
39. Koch, E., and Spitzer, R. (1983). Multiple effects of colchicine on oogenesis in *Drosophila*; Induced sterility and switch of potential oocyte to nurse-cell developmental pathway. *Cell and Tissue Res.* *228*, 21-32.
40. Roper, K., and Brown, N.H. (2004). A Spectraplakins Is Enriched on the Fusome and Organizes Microtubules during Oocyte Specification in *Drosophila*. *Curr Biol* *14*, 99-110.
41. Schüpbach, T., and Wieschaus, E. (1991). Female sterile mutations on the second chromosome of *Drosophila melanogaster*. II. Mutations blocking oogenesis or altering egg morphology. *Genetics* *129*, 1119-1136.
42. Ran, B., Bopp, R., and Suter, B. (1994). Null alleles reveal novel requirements for *Bic-D* during *Drosophila* oogenesis. *Development* *120*, 1233-1242.
43. Mach, J.M., and Lehmann, R. (1997). An Egalitarian-BicaudalD complex is essential for oocyte specification and axis determination in *Drosophila*. *Genes & Development* *11*, 423-435.
44. Swan, A., and Suter, B. (1996). Role of *Bicaudal-D* in patterning the *Drosophila* egg chamber in mid-oogenesis. *Development* *122*, 3577-3586.
45. Bullock, S.L., and Ish-Horowitz, D. (2001). Conserved signals and machinery for RNA transport in *Drosophila* oogenesis and embryogenesis. *Nature* *414*, 611-616.
46. Wilkie, G.S., and Davis, I. (2001). *Drosophila wingless* and pair-rule transcripts localise apically by dynein-mediated transport of RNA particles. *Cell* *105*, 209-219.
47. Hoogenraad, C.C., Akhmanova, A., Howell, S.A., Dortland, B.R., De Zeeuw, C.I., Willemsen, R., Visser, P., Grosveld, F., and Galjart, N. (2001). Mammalian Golgi-associated Bicaudal-D2 functions in the dynein-dynactin pathway by interacting with these complexes. *Embo J* *20*, 4041-4054.
48. Matanis, T., Akhmanova, A., Wulf, P., Del Nery, E., Weide, T., Stepanova, T., Galjart, N., Grosveld, F., Goud, B., De Zeeuw, C.I., Barnekow, A., and Hoogenraad, C.C. (2002). Bicaudal-D regulates COPI-independent Golgi-ER

- transport by recruiting the dynein-dynactin motor complex. *Nat Cell Biol* 4, 986-992.
49. Hoogenraad, C.C., Wulf, P., Schiefermeier, N., Stepanova, T., Galjart, N., Small, J.V., Grosveld, F., de Zeeuw, C.I., and Akhmanova, A. (2003). Bicaudal D induces selective dynein-mediated microtubule minus end-directed transport. *Embo J* 22, 6004-6015.
 50. Navarro, C., Puthalakath, H., Adams, J.M., Strasser, A., and Lehmann, R. (2004). Egalitarian binds dynein light chain to establish oocyte polarity and maintain oocyte fate. *Nature Cell Biology* *in press*.
 51. Swan, A., Nguyen, T., and Suter, B. (1999). *Drosophila* Lissencephaly-1 functions with Bic-D and dynein in oocyte determination and nuclear positioning. *Nat Cell Biol* 1, 444-449.
 52. Januschke, J., Gervais, L., Dass, S., Kaltschmidt, J.A., Lopez-Schier, H., St Johnston, D., Brand, A.H., Roth, S., and Guichet, A. (2002). Polar transport in the *Drosophila* oocyte requires Dynein and Kinesin I cooperation. *Curr Biol* 12, 1971-1981.
 53. Hawkins, N.C., Thorpe, J., and Schüpbach, T. (1996). *encore*, a gene required for the regulation of germ line mitosis and oocyte differentiation during *Drosophila* oogenesis. *Development* 122, 281-290.
 54. Buskirk, C.V., Hawkins, N.C., and Schüpbach, T. (2000). Encore is a member of a novel family of proteins and affects multiple processes in *Drosophila* oogenesis. *Development* 127, 4753-4762.
 55. Van Buskirk, C., and Schupbach, T. (2002). Half pint regulates alternative splice site selection in *Drosophila*.
 56. Storto, P.D., and King, R.C. (1988). Multiplicity of functions for the *otu* gene products during *Drosophila* oogenesis. *Dev Genet* 9, 91-120.
 57. King, R.C., and Storto, P.D. (1988). The role of the *otu* gene in *Drosophila* oogenesis. *Bioessays* 8, 18-24.
 58. Clark, K.A., and McKearin, D.M. (1996). The *Drosophila stonewall* gene encodes a putative transcription factor essential for germ cell development. *Development* 122, 937-950.
 59. Mata, J., Curado, S., Ephrussi, A., and Rorth, P. (2000). Tribbles coordinates mitosis and morphogenesis in *Drosophila* by regulating string/CDC25 proteolysis. *Cell* 101, 511-522.
 60. Lilly, M.A., and Spradling, A.C. (1996). The *Drosophila* endocycle is controlled by Cyclin E and lacks a checkpoint ensuring S-phase completion. *Genes & Development* 10, 2514-2526.
 61. Tearle, R., and Nüsslein-Volhard, C. (1987). Tübingen mutants and stocklist. *Drosophila Information Service* 66, 209-269.
 62. González-Reyes, A., and St Johnston, D. (1994). Role of oocyte position in the establishment of anterior-posterior polarity in *Drosophila*. *Science* 266, 639-642.
 63. Gillespie, D.E., and Berg, C.E. (1995). *homeless* is required for RNA localization in *Drosophila* oogenesis and encodes a new member of the DE-H family of RNA-dependent ATPases. *Genes Dev.* 9, 2495-2508.
 64. González-Reyes, A., Elliot, H., and St Johnston, D. (1997). Oocyte determination and the origin of polarity in *Drosophila*: the role of the *spindle* genes. *Development* 124, 4927-4937.
 65. Findley, S.D., Tamanaha, M., Clegg, N.J., and Ruohola-Baker, H. (2003). *Maelstrom*, a *Drosophila spindle*-class gene, encodes a protein that colocalizes

- with Vasa and RDE1/AGO1 homolog, Aubergine, in nuage. *Development* *130*, 859-871.
66. Ghabrial, A., Ray, R.P., and Schüpbach, T. (1998). *okra* and *spindle-B* encode components of the RAD52 DNA repair pathway and affect meiosis and patterning in *Drosophila* oogenesis. *Genes Dev.* *12*, 2711-2723.
 67. Abdu, U., Gonzalez-Reyes, A., Ghabrial, A., and Schupbach, T. (2003). The *Drosophila* *spn-D* gene encodes a RAD51C-like protein that is required exclusively during meiosis. *Genetics* *165*, 197-204.
 68. Staeva-Vieira, E., Yoo, S., and Lehmann, R. (2003). An essential role of DmRad51/SpnA in DNA repair and meiotic checkpoint control. *Embo J* *22*, 5863-5874.
 69. Ghabrial, A., and Schüpbach, T. (1999). Activation of a meiotic checkpoint regulates translation of Gurken during *Drosophila* oogenesis. *Nat. Cell Biol.* *1*, 354-357.
 70. Gonzalez-Reyes, A. (1999). DNA repair and pattern formation come together. *Nat Cell Biol* *1*, E150-152.
 71. Morris, J., and Lehmann, R. (1999). *Drosophila* oogenesis: versatile spn doctors. *Current Biology* *9*, R55-58.
 72. Kennerdell, J.R., Yamaguchi, S., and Carthew, R.W. (2002). RNAi is activated during *Drosophila* oocyte maturation in a manner dependent on aubergine and spindle-E. *Genes Dev* *16*, 1884-1889.
 73. Aravin, A.A., Naumova, N.M., Tulin, A.V., Vagin, V.V., Rozovsky, Y.M., and Gvozdev, V.A. (2001). Double-stranded RNA-mediated silencing of genomic tandem repeats and transposable elements in the *D. melanogaster* germline. *Curr Biol* *11*, 1017-1027.
 74. Findley, S.D., Tamanaha, M., Clegg, N.J., and Ruohola-Baker, H. (2003). *Maelstrom*, a *Drosophila* spindle-class gene, encodes a protein that colocalizes with Vasa and RDE1/AGO1 homolog, Aubergine, in nuage. *Development* *130*, 859-871.
 75. Tomari, Y., Du, T., Haley, B., Schwarz, D.S., Bennett, R., Cook, H.A., Koppetsch, B.S., Theurkauf, W.E., and Zamore, P.D. (2004). RISC assembly defects in the *Drosophila* RNAi mutant *armitage*. *Cell* *116*, 831-841.
 76. Cook, H.A., Koppetsch, B.S., Wu, J., and Theurkauf, W.E. (2004). The *Drosophila* SDE3 homolog *armitage* is required for oskar mRNA silencing and embryonic axis specification. *Cell* *116*, 817-829.
 77. Gillespie, D., and Berg, C. (1995). *Homeless* is required for RNA localization in *Drosophila* oogenesis and encodes a new member of the DE-H family of RNA-dependent ATPases. *Genes Dev* *9*, 2495-2508.
 78. Clegg, N.J., Findley, S.D., Mahowald, A.P., and Ruohola-Baker, H. (2001). *maelstrom* is required to position the MTOC in stage 2-6 *Drosophila* oocytes. *Dev Genes Evol* *211*, 44-48.
 79. Clegg, N.J., Frost, D.M., Larkin, M.K., Subrahmanyam, L., Bryant, Z., and Ruohola-Baker, H. (1997). *maelstrom* is required for an early step in the establishment of *Drosophila* oocyte polarity: posterior localization of *grk* mRNA. *Development* *124*, 4661-4671.
 80. Martin, S.G., Leclerc, V., Smith-Litierre, K., and St Johnston, D. (2003). The identification of novel genes required for *Drosophila* anteroposterior axis formation in a germline clone screen using GFP-Staufen. *Development* *130*, 4201-4215.

81. Paré, C., and Suter, B. (2000). Subcellular localization of Bic-D::GFP is linked to an asymmetric oocyte nucleus. *Journal of Cell Science* *113*, 2119-2127.
82. Guo, S., and Kemphues, K.J. (1995). *par-1*, a gene required for establishing polarity in *C. elegans* embryos, encodes a putative Ser/Thr kinase that is asymmetrically distributed. *Cell* *81*, 611-620.
83. Cox, D.N., Lu, B., Sun, T., Williams, L.T., and Jan, Y.N. (2001a). *Drosophila par-1* is required for oocyte differentiation and microtubule organization. *Curr Biol* *11*, 75-87.
84. Boyd, L., Guo, S., Levitan, D., Stinchcomb, D.T., and Kemphues, K.J. (1996). PAR-2 is asymmetrically distributed and promotes association of P granules and PAR-1 with the cortex in *C. elegans* embryos. *Development* *122*, 3075-3084.
85. Etemad-Moghadam, B., Guo, S., and Kemphues, K.J. (1995). Asymmetrically distributed PAR-3 protein contributes to cell polarity and spindle alignment in early *C. elegans* embryos. *Cell* *83*, 743-752.
86. Watts, J.L., Etemad-Moghadam, B., Guo, S., Boyd, L., Draper, B.W., Mello, C.C., Priess, J.R., and Kemphues, K.J. (1996). *par-6*, a gene involved in the establishment of asymmetry in early *C. elegans* embryos, mediates the asymmetric localization of PAR-3. *Development* *122*, 3133-3140.
87. Hung, T.J., and Kemphues, K.J. (1999). PAR-6 is a conserved PDZ domain-containing protein that colocalizes with PAR-3 in *Caenorhabditis elegans* embryos. *Development* *126*, 127-135.
88. Joberty, G., Petersen, C., Gao, L., and Macara, I.G. (2000). The cell-polarity protein Par6 links Par3 and atypical protein kinase C to Cdc42. *Nat Cell Biol* *2*, 531-539.
89. Lin, D., Edwards, A.S., Fawcett, J.P., Mbamalu, G., Scott, J.D., and Pawson, T. (2000). A mammalian PAR-3-PAR-6 complex implicated in Cdc42/Rac1 and aPKC signalling and cell polarity. *Nat Cell Biol* *2*, 540-547.
90. Benton, R., Palacios, I.M., and St Johnston, D. (2002). *Drosophila* 14-3-3/PAR-5 is an essential mediator of PAR-1 function in axis formation. *Dev. Cell* *3*, 659-671.
91. Martin, S.G., and St Johnston, D. (2003). A role for *Drosophila* LKB1 in anterior-posterior axis formation and epithelial polarity. *Nature* *421*, 379-384.
92. Lyczak, R., Gomes, J.E., and Bowerman, B. (2002). Heads or tails: cell polarity and axis formation in the early *Caenorhabditis elegans* embryo. *Dev Cell* *3*, 157-166.
93. Cox, D.N., Seyfried, S.A., Jan, L.Y., and Jan, Y.N. (2001b). Bazooka and atypical protein kinase C are required to regulate oocyte differentiation in the *Drosophila* ovary. *Proc Natl Acad Sci U S A* *98*, 14475-14480.
94. Vaccari, T., and Ephrussi, A. (2002). The fusome and microtubules enrich Par-1 in the oocyte, where it effects polarization in conjunction with Par-3, BicD, Egl, and dynein. *Curr Biol* *12*, 1524-1528.
95. Benton, R., Palacios, I.M., and St Johnston, D. (2002). *Drosophila* 14-3-3/PAR-5 is an essential mediator of PAR-1 function in axis formation. *Dev Cell* *3*, 659-671.
96. Benton, R., and St Johnston, D. (2003). *Drosophila* PAR-1 and 14-3-3 inhibits Bazooka/Par-3 to establish complementary cortical domains in polarized cells. *Cell* *115*, 691-704.

97. Hurov, J.B., Watkins, J.L., and Piwnicka-Worms, H. (2004). Atypical PKC phosphorylates PAR-1 kinases to regulate localization and activity. *Curr Biol* *14*, 736-741.
98. Shulman, J.M., Benton, R., and St. Johnston, D. (2000). The *Drosophila* homolog of *C. elegans* PAR-1 organizes the oocyte cytoskeleton and directs *oskar* mRNA localisation to the posterior pole. *Cell* *101*, 1-20.
99. Bilder, D., Schober, M., and Perrimon, N. (2003). Integrated activity of PDZ protein complexes regulates epithelial polarity. *Nat Cell Biol* *5*, 53-58.
100. Tanentzapf, G., and Tepass, U. (2003). Interactions between the crumbs, lethal giant larvae and bazooka pathways in epithelial polarization. *Nat Cell Biol* *5*, 46-52.
101. Deng, W.M., Schneider, M., Frock, R., Castillejo-Lopez, C., Gaman, E.A., Baumgartner, S., and Ruohola-Baker, H. (2003). Dystroglycan is required for polarizing the epithelial cells and the oocyte in *Drosophila*. *Development* *130*, 173-184.
102. González-Reyes, A., Elliott, H., and St Johnston, D. (1995). Polarization of both major body axes in *Drosophila* by *gurken-torpedo* signalling. *Nature* *375*, 654-658.
103. Roth, S., Neuman-Silberberg, F.S., Barcelo, G., and Schüpbach, T. (1995). cornichon and the EGF receptor signaling process are necessary for both anterior-posterior and dorsal-ventral pattern formation in *Drosophila*. *Cell* *81*, 967-978.
104. Gonzalez-Reyes, A., and St Johnston, D. (1994). Role of oocyte position in establishment of anterior-posterior polarity in *Drosophila*. *Science* *266*, 639-642.
105. Godt, D., and Tepass, U. (1998). *Drosophila* oocyte localisation is mediated by differential cadherin-based adhesion. *Nature* *395*, 387-391.
106. Gonzalez-Reyes, A., and St Johnston, D. (1998). The *Drosophila* AP axis is polarised by the cadherin-mediated positioning of the oocyte. *Development* *125*, 3635-3644.
107. Torres, I.L., Lopez-Schier, H., and St Johnston, D. (2003). A Notch/Delta-dependent relay mechanism establishes anterior-posterior polarity in *Drosophila*. *Dev Cell* *5*, 547-558.
108. Pepling, M.E., de Cuevas, M., and Spradling, A.C. (1999). Germline: a conserved phase of germ cell development. *Trends in Cell Biol.* *9*, 257-262.
109. Kloc, M., Bilinski, S., Dougherty, M.T., Brey, E.M., and Etkin, L.D. (2004). Formation, architecture and polarity of female germline cyst in *Xenopus*. *Developmental Biology*, (in press).
110. Vinot, S., Le, T., Maro, B., and Louvet-Vallee, S. (2004). Two PAR6 Proteins Become Asymmetrically Localized during Establishment of Polarity in Mouse Oocytes. *Curr Biol* *14*, 520-525.
111. Coggins, L.W. (1973). An ultrastructural and radioautographic study of early oogenesis in the toad *Xenopus laevis*. *J Cell Sci* *12*, 71-93.
112. Klymkowsky, M.W., and Karnovsky, A. (1994). Morphogenesis and the cytoskeleton: studies of the *Xenopus* embryo. *Dev Biol* *165*, 372-384.
113. Gard, D.L. (1995). Axis formation during amphibian oogenesis: reevaluating the role of the cytoskeleton. *Curr Top Dev Biol* *30*, 215-252.
114. Gard, D.L., Affleck, D., and Error, B.M. (1995). Microtubule organization, acetylation, and nucleation in *Xenopus laevis* oocytes: II. A developmental

- transition in microtubule organization during early diplotene. *Dev Biol* *168*, 189-201.
115. Gard, D.L., Cha, B.J., and Schroeder, M.M. (1995). Confocal immunofluorescence microscopy of microtubules, microtubule-associated proteins, and microtubule-organizing centers during amphibian oogenesis and early development. *Curr Top Dev Biol* *31*, 383-431.
 116. Kloc, M., Larabell, C., Chan, A.P., and Etkin, L.D. (1998). Contribution of METRO pathway localized molecules to the organization of the germ cell lineage. *Mech Dev* *75*, 81-93.
 117. Heasman, J., Quarmby, J., and Wylie, C.C. (1984). The mitochondrial cloud of *Xenopus* oocytes: the source of germinal granule material. *Dev Biol* *105*, 458-469.
 118. Schnapp, B.J., Arn, E.A., Deshler, J.O., and Highett, M.I. (1997). RNA localization in *Xenopus* oocytes. *Semin Cell Dev Biol* *8*, 529-540.
 119. King, M.L., Zhou, Y., and Bubunencko, M. (1999). Polarizing genetic information in the egg: RNA localization in the frog oocyte. *Bioessays* *21*, 546-557.

Figure Legends

Figure 1 : *Drosophila* early oogenesis

Each ovariole is made of a chain of more and more mature egg chambers towards the posterior (P). An egg chamber comprises 16 germline cells surrounded by a monolayer of follicle cells. The egg chambers are produced in a specialised structure, called the germarium, at the anterior (A) of the ovariole. The germarium is divided into 4 morphological regions along the antero-posterior axis. The germline stem cells reside at the anterior tip of the germarium (left) and divide to produce cytoblasts, which divide four more times in region 1 to produce 16 cell germline cysts that are connected by ring canals. The stem cells and cytoblasts contain a spectrosome (red circles), which develops into a branched structure called the fusome, which orients each division of the cyst. In early region 2a, the synaptonemal complex (SC, red lines) forms along the chromosomes of the 2 cells with 4 ring canals (the pro-oocytes) as they enter meiosis. The SC then appears transiently in the 2 cells with 3 ring canals, before becoming restricted to the pro-oocytes in late region 2a. By region 2b, the oocyte has been selected, and is the only cell to remain in meiosis. In region 2a, cytoplasmic proteins, mRNAs and mitochondria (green), and the centrosomes (blue circles) progressively accumulate at the anterior of the oocyte. In region 2b, the minus-ends of the microtubules are focused in the oocyte, and the plus-ends extend through the ring canals into the nurse cells. The follicle cells (grey) also start to migrate and surround the germline cells. As the cyst moves down to region 3, the oocyte adheres strongly to the posterior follicle cells and repolarises along its antero-posterior axis, with the MT minus-ends and specific cytoplasmic components now localised at the posterior cortex.

Figure 2 : Formation of the fusome

The spectroosome (red) of the cystoblast (1) interacts with one of the centrosomes (green and blue spheres) to anchor one pole of the mitotic spindle (green lines), during the first incomplete division. A fusome plug (red) forms in the arrested furrow or ring canal (blue). The spectroosome (or “original” fusome) and the fusome plug come together to fuse. The direction of these movements is not known (?). The same mechanism is repeated for division 2, 3 and 4 : 1) One pole of each mitotic spindle is anchored by the fusome. 2) A new fusome plug forms into each ring canal. 3) the ring canals move centripetally for the fusome plugs to fuse with the central fusome (black arrows). This behaviour has several crucial consequences : 1) cystocyte (1) has more fusome than the other cystocytes; 2) the same centrosome (green sphere) could be inherited by the cystocyte (1) from division 1 through division 4; and 3) the fusome always marks the anterior of cystocyte (1), after the clustering of the ring canals.

Figure 3 : The early steps in the determination and polarisation of the oocyte

The early differentiation of the oocyte is a multistep process. Genes involved at each step are indicated on the figure. The lists are not exhaustive, only the genes mentioned in the text are indicated (see text for more details). Actors of the cytoplasmic differentiation are in red, whereas regulators of the cell cycle are in blue. The top panel shows a 4-cell cyst (α -spectrin, in red, marks the fusome and anilin, in green, marks the ring canals). One cell has more fusome than the other cells (arrow). The panel below shows a 16-cell cyst after the last division with one cell having more fusome (arrow).

There are three different pathways to restrict the oocyte identity to one cell (asterik). The left panels shows the actin in red and the synaptonemal complex in green. In the middle panels, a nuclear GFP is in green, and Orb (an oocyte-specific cytoplasmic protein) is in red. On the right panels, the γ -tubulin marks the centrosomes in red, the α -spectrin marks the fusome in blue, and a nuclear GFP is in green. Orb and the centrosomes are clearly seen migrating from the anterior of the oocyte to the posterior, revealing the repolarisation of the oocyte.

Figure 4 : Similarities between the early steps of *Drosophila* and *Xenopus* oogenesis

In both *Drosophila* and *Xenopus*, the oocyte inherits an antero-posterior axis of symmetry from the cyst divisions (for a review on *Xenopus* early oogenesis, see [111-115]). Specific cytoplasmic components accumulate (green) in a depression above the nucleus (red) [18, 81, 111, 113, 116]. The oocyte then polarises along this axis when the somatic follicle cells surround it. We suggest that a signal coming from the follicle cells may trigger this polarisation. This polarisation is clearly seen in *Drosophila* with the translocation of specific cytoplasmic proteins, mRNAs and the centrosomes to the posterior of the oocyte (black arrow). The situation is less clear in *Xenopus*, as the cell rounds up and seems to lose any polarity [113, 115, 117]. However, we propose that the same components which were above the nucleus after the cyst division, are now part of the Balbiani body on the vegetal side (green sphere). At the following stage, these components migrate to the posterior/vegetal cortex of the oocyte. This has been clearly demonstrated in *Xenopus*, and is here hypothesised for *Drosophila* [117-119]. Both oocytes then enter the vitellogenic stages.

Supplementary data

Movie 1 : Dividing cyst going from 2 to 4 cells

□-Spectrin marks the fusome (red) and Dynein labels the microtubules at both poles of the spindle (green). One pole of each spindle is anchored to the fusome. The cell on the left has clearly more fusome than the other cell. The fusomes plugs have not yet started to form within each ring canal.

Movie 2 : Dividing cyst going from 8 to 16 cells

□-Spectrin marks the fusome (red) and Dynein labels the microtubules at both poles of the spindle (green). 8 mitotic spindles can be distinguished in synchrony. Each of them has one pole anchored to the fusome.

Germarium

Stage 3

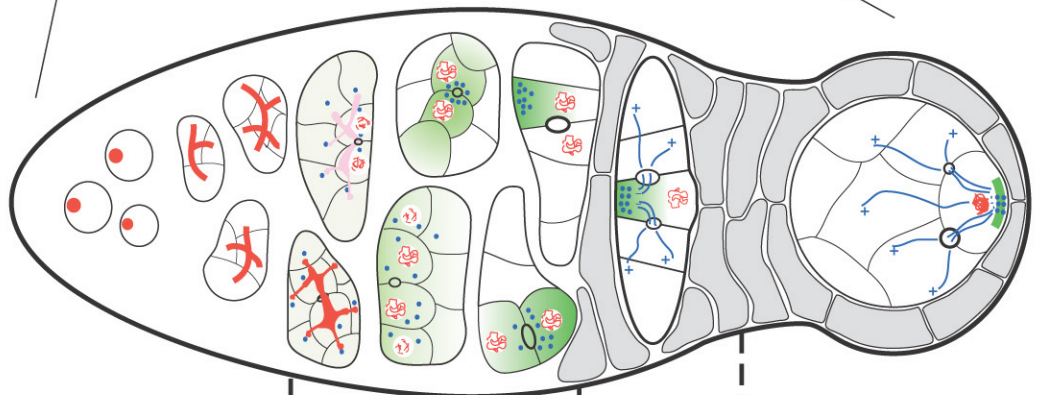
Stage 6

Follicle cells

P

A

Germline cyst

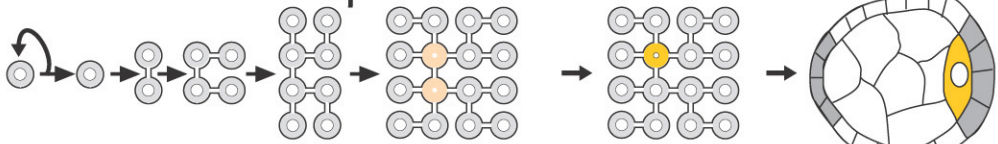


1

2a

2b

3



Stem cell

Cystoblast divisions

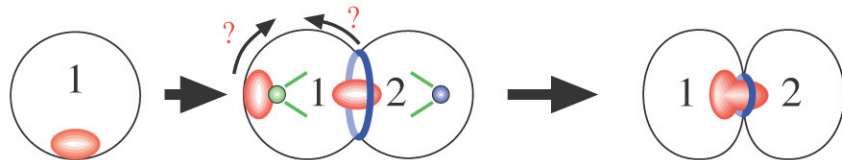
Selection of the pro-oocytes

Selection of the oocyte

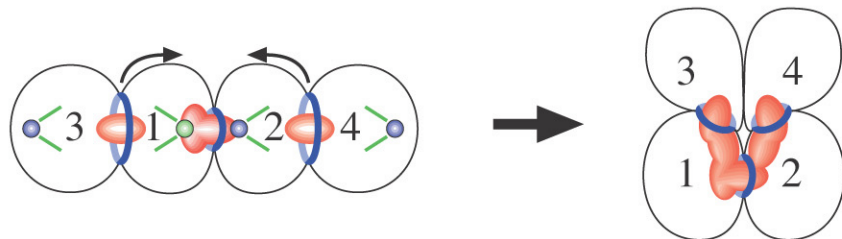
Division

Clustering

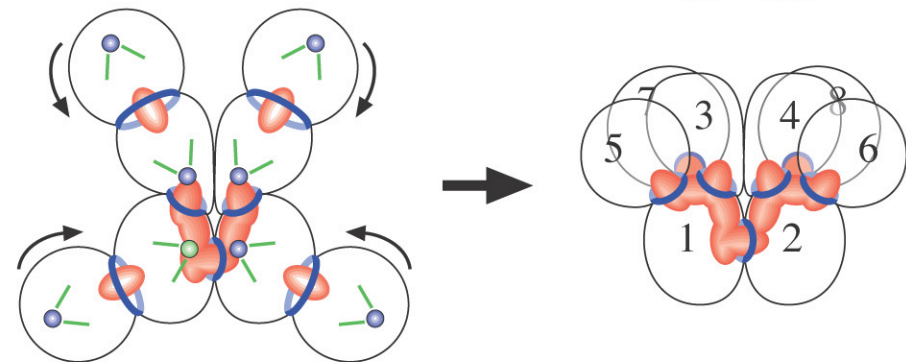
1



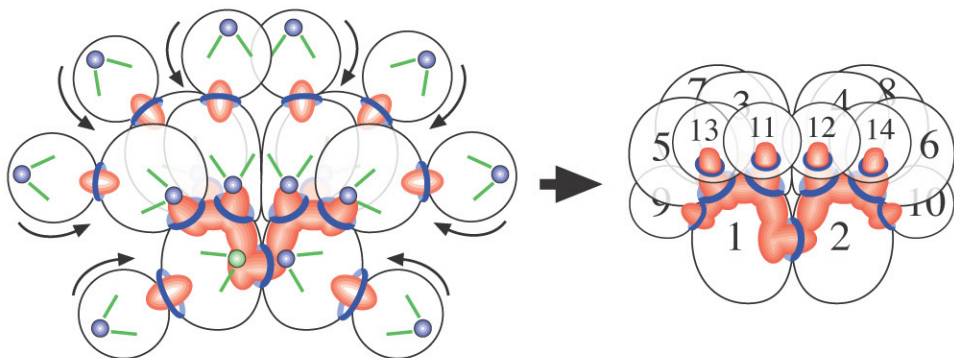
2

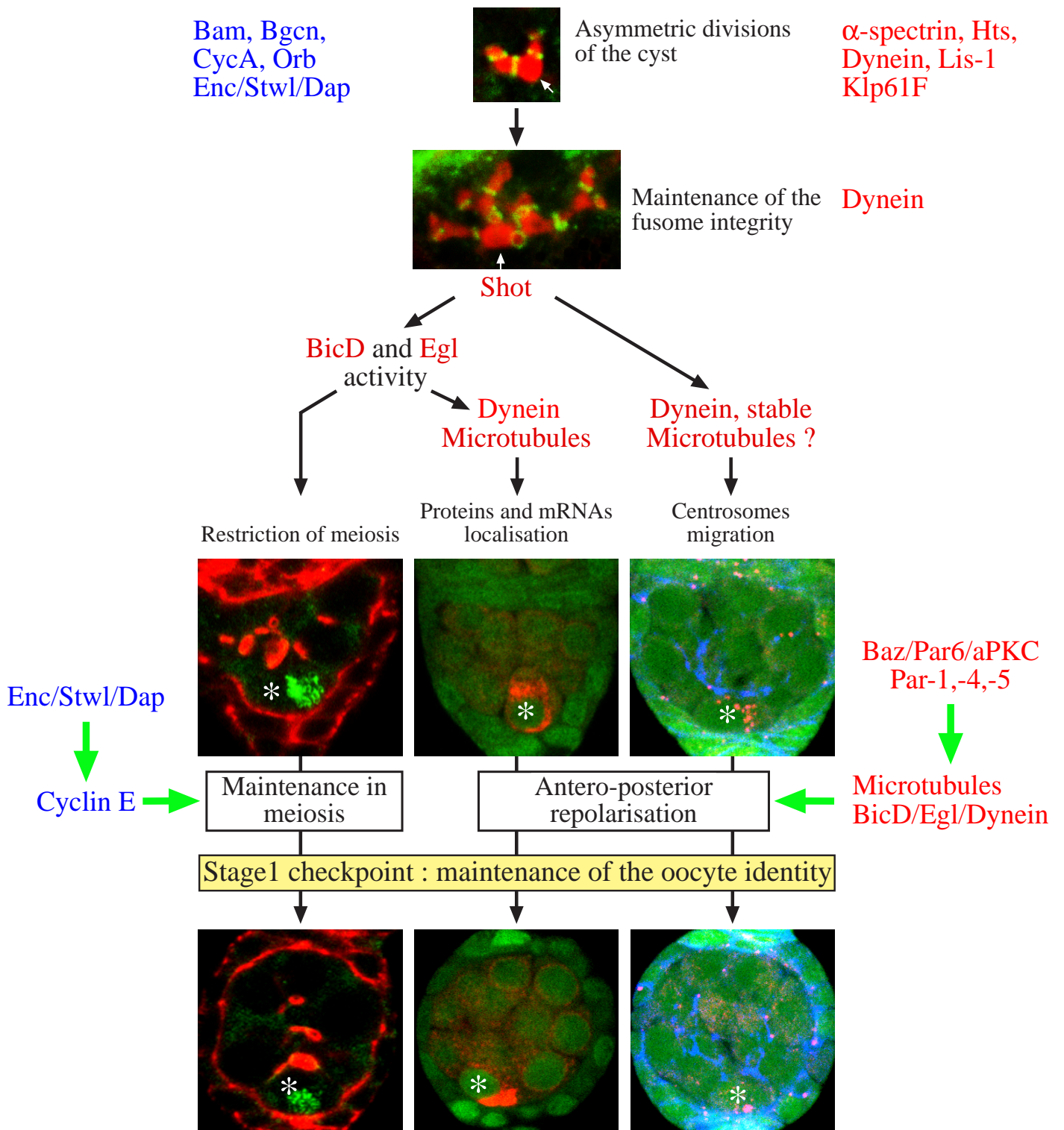


3



4

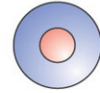




Drosophila

Xenopus

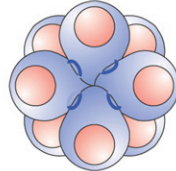
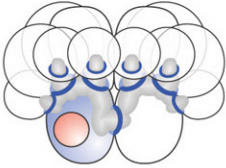
Cystoblast



Oogonium

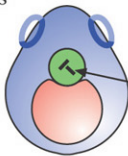
4 rounds of mitosis
with incomplete cytokinesis

16-cells cyst



16-cells nest

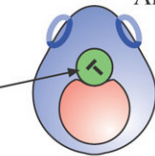
One cell differentiates
as an oocyte
(region 2b)



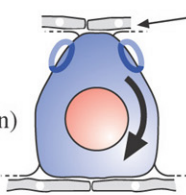
Polarity inherited from the divisions

[vesicles, centrosomes
mitochondria, MT
minus-ends, proteins,
mRNAs]

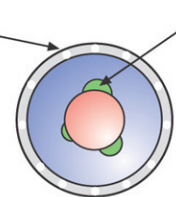
All 16 cells become
oocytes
(Stage "0")



Early stage I
(cyst encapsulation)



follicle cells invasion
(signal?)

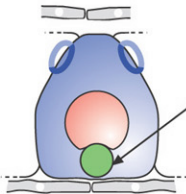


Mitochondria
aggregates

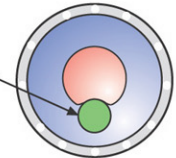
Early stage I
(oocyte separation)

Repolarisation

Mid-stage I



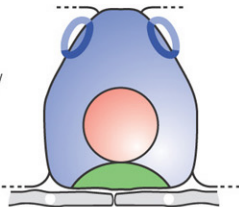
[vesicles, centrosomes
mitochondria, MT
minus-ends, proteins,
mRNAs]



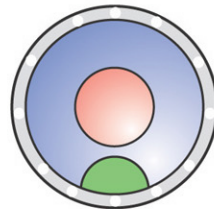
Mid-stage I

Migration to the cortex
posterior/vegetal

Late stage I/
stage II



Posterior



Vegetal

Late stage I/
stage II

Vitellogenic stages