



# Large deviations for the chemical distance in supercritical Bernoulli percolation

Olivier Garet, Régine Marchand

## ► To cite this version:

Olivier Garet, Régine Marchand. Large deviations for the chemical distance in supercritical Bernoulli percolation. *Annals of Probability*, 2007, 35 (3), pp.833-866. hal-00002875v2

**HAL Id: hal-00002875**

**<https://hal.science/hal-00002875v2>**

Submitted on 7 Dec 2006 (v2), last revised 31 Jul 2007 (v3)

**HAL** is a multi-disciplinary open access archive for the deposit and dissemination of scientific research documents, whether they are published or not. The documents may come from teaching and research institutions in France or abroad, or from public or private research centers.

L'archive ouverte pluridisciplinaire **HAL**, est destinée au dépôt et à la diffusion de documents scientifiques de niveau recherche, publiés ou non, émanant des établissements d'enseignement et de recherche français ou étrangers, des laboratoires publics ou privés.

# LARGE DEVIATIONS FOR THE CHEMICAL DISTANCE IN SUPERCritical BERNouLLI PERCOLATION

OLIVIER GARET AND RÉGINE MARCHAND

ABSTRACT. The chemical distance  $D(x, y)$  is the length of the shortest open path between two points  $x$  and  $y$  in an infinite Bernoulli percolation cluster. In this work, we study the asymptotic behaviour of this random metric, and we prove that, for an appropriate norm  $\mu$  depending on the dimension and the percolation parameter, the probability of the event

$$\left\{ 0 \leftrightarrow x, \frac{D(0, x)}{\mu(x)} \notin (1 - \varepsilon, 1 + \varepsilon) \right\}$$

exponentially decreases when  $\|x\|_1$  tends to infinity. From this bound we also derive a large deviation inequality for the corresponding asymptotic shape result.

## 1. INTRODUCTION AND STATEMENT OF MAIN RESULTS

The matter of this article is the study of the asymptotic length of the shortest open path between two points in an infinite Bernoulli percolation cluster.

Let us first recall the Bernoulli percolation model and its usual notations. Consider the graph whose vertices are the points of  $\mathbb{Z}^d$ , and put a non-oriented edge between each pair  $\{x, y\}$  of points in  $\mathbb{Z}^d$  such that the Euclidean distance between  $x$  and  $y$  is equal to 1: two such points are called *neighbours*, and this set of edges is denoted by  $\mathbb{E}^d$ .

Set  $\Omega = \{0, 1\}^{\mathbb{E}^d}$ . We denote by  $\mathbb{P}_p$  the product probability  $(p\delta_1 + (1-p)\delta_0)^{\otimes \mathbb{E}^d}$  on the set  $\Omega$ . For a point  $\omega$  in  $\Omega$ , we say that the edge  $e \in \mathbb{E}^d$  is *open* in the configuration  $\omega$  if  $\omega(e) = 1$ , and *closed* otherwise. The states of the different edges are thus independent under  $\mathbb{P}_p$ . In the whole paper, the parameter  $p$  is supposed to satisfy  $p \in (p_c, 1]$ , where  $p_c = p_c(d)$  is the critical probability for Bernoulli bond percolation on  $\mathbb{Z}^d$ .

A *path* is a sequence  $\gamma = (x_1, e_1, x_2, e_2, \dots, x_n, e_n, x_{n+1})$  such that  $x_i$  and  $x_{i+1}$  are neighbours and  $e_i$  is the edge between  $x_i$  and  $x_{i+1}$ . We will also sometimes describe  $\gamma$  only by the vertices it visits  $\gamma = (x_1, x_2, \dots, x_n, x_{n+1})$  or by its edges  $\gamma = (e_1, e_2, \dots, e_n)$ . The number  $n$  of edges in  $\gamma$  is called the *length* of  $\gamma$  and is denoted by  $|\gamma|$ . Moreover, we will only consider *simple paths* for which the visited vertices are all distinct. A path is said to be *open* in the configuration  $\omega$  if all its edges are open in  $\omega$ .

---

*Date:* December 7, 2006.

*2000 Mathematics Subject Classification.* 60K35, 82B43.

*Key words and phrases.* Percolation, first-passage percolation, chemical distance, shape theorem, large deviation inequalities.

The *clusters* of a configuration  $\omega$  are the connected components of the graph induced on  $\mathbb{Z}^d$  by the open edges in  $\omega$ . For  $x$  in  $\mathbb{Z}^d$ , we denote by  $C(x)$  the cluster containing  $x$ . In other words,  $C(x)$  is the set of points in  $\mathbb{Z}^d$  that are linked to  $x$  by an open path. We write  $x \leftrightarrow y$  to signify that  $x$  and  $y$  belong to the same cluster. For  $p > p_c$ , there exists almost surely one and only one infinite cluster. We denote by  $C_\infty$  the random set:  $C_\infty = \{k \in \mathbb{Z}^d : |C(k)| = +\infty\}$ , which is almost surely connected.

We introduce the *chemical distance*  $D(x, y)(\omega)$  between  $x$  and  $y$  in  $\mathbb{Z}^d$ , depending on the Bernoulli percolation configuration  $\omega$ :

$$D(x, y)(\omega) = \inf_{\gamma} |\gamma|,$$

where the infimum is taken on the set of paths whose ends are  $x$  and  $y$  and that are open in the configuration  $\omega$ . It is of course only defined when  $x$  and  $y$  are in the same percolation cluster. Otherwise, we set by convention  $D(x, y) = +\infty$ . The random distance  $D(x, y)$  is thus, when it is finite, the minimal number of open edges needed to link  $x$  and  $y$  in the configuration  $\omega$ , and is thus larger than  $\|x - y\|_1$ , where  $\|\cdot\|_1$  is the usual  $\ell^1$  norm:  $\|x\|_1 = \sum_{i=1}^d |x_i|$ .

Note that the chemical distance  $D(0, x)$  on the infinite Bernoulli cluster with parameter  $p > p_c$  can be seen as the travel time between 0 and  $x$  in a first-passage percolation model where the passage times of the edges are independent identically distributed random variables with common distribution  $p\delta_1 + (1-p)\delta_{+\infty}$ .

Antal and Pisztora [1] have proved that the chemical distance cannot asymptotically be too large when compared with the usual distance  $\|\cdot\|_1$ : for each  $p > p_c$ , there exists a positive constant  $\rho$  such that

$$(1) \quad \overline{\lim}_{\|x\|_1 \rightarrow +\infty} \frac{\ln \mathbb{P}_p(0 \leftrightarrow x, D(0, x) \geq \rho \|x\|_1)}{\|x\|_1} < 0.$$

If we think of the chemical distance as a special travel time in a first-passage percolation model, it is natural to expect that the term  $\rho \|x\|_1$  in (1) could be replaced by a smaller term, depending on a directional functional. Indeed, a good candidate exists, which has been defined in a previous paper of the authors:

**Proposition 1.1** (Garet and Marchand [7]). *Let  $p > p_c$  and consider the chemical distance  $D(\cdot, \cdot)$  for Bernoulli percolation with parameter  $p$ . There exists a norm  $\mu$  on  $\mathbb{R}^d$  such that, almost surely on the event  $\{0 \leftrightarrow \infty\}$ ,*

$$\forall u \in \mathbb{Z}^d \quad \lim_{n \rightarrow \infty} \frac{D(0, T_{n,u}u)}{T_{n,u}} = \mu(u),$$

where  $(T_{n,u})_{n \geq 1}$  is the increasing sequence of positive integers  $k$  such that  $ku \leftrightarrow \infty$ .

It is then natural to study the fluctuations around this limit, and to look for exponential decay results analogous to the ones obtained, for instance by Grimmett and Kesten [9], in first-passage percolation. Therefore, the main object of this work is to prove the following large deviation bound:

**Theorem 1.2.** *Let  $p$  in the interval  $(p_c, 1]$  and denote by  $\mu$  the norm on  $\mathbb{R}^d$  given by Proposition 1.1. Then,*

$$\forall \varepsilon > 0 \quad \overline{\lim}_{\|x\|_1 \rightarrow +\infty} \frac{\ln \mathbb{P}_p \left( 0 \leftrightarrow x, \frac{D(0,x)}{\mu(x)} \notin (1 - \varepsilon, 1 + \varepsilon) \right)}{\|x\|_1} < 0.$$

The proof of Theorem 1.2 is divided into two parts: the upper large deviations and the lower large deviations, which are respectively dealt with in Sections 3 and 4.

First, in Section 3, we prove an upper large deviations inequality or, more precisely, the following exponential bound for the probability that the chemical distance between two points  $x$  and  $y$  is abnormally large:

**Theorem 1.3.** *For every  $p > p_c(d)$  and every  $\varepsilon > 0$ , we have*

$$\overline{\lim}_{\|x\|_1 \rightarrow +\infty} \frac{\ln \mathbb{P}_p(0 \leftrightarrow x, D(0, x) \geq (1 + \varepsilon)\mu(x))}{\|x\|_1} < 0.$$

The proof of this result strongly relies, through an appropriate renormalization argument, on the fact that, when  $p$  is sufficiently close to one, the chemical distance looks like the usual distance  $\|\cdot\|_1$ :

**Theorem 1.4.** *For each  $\alpha > 0$ , there exists  $p'(\alpha) \in (p_c(d), 1)$  such that for every  $p \in (p'(\alpha), 1]$ , the Bernoulli percolation with parameter  $p$  satisfies:*

$$\overline{\lim}_{\|x\|_1 \rightarrow +\infty} \frac{\ln \mathbb{P}_p(0 \leftrightarrow x, D(0, x) \geq (1 + \alpha)\|x\|_1)}{\|x\|_1} < 0.$$

We also obtain, as a corollary of this result, the continuity in  $p = 1$  of the map  $p \mapsto \mu_p$ , where  $\mu_p$  denotes the norm associated to the chemical distance in the Bernoulli percolation with parameter  $p$ :

**Corollary 1.5.**  $\lim_{p \rightarrow 1} \sup_{\|x\|_1 \leq 1} |\mu_p(x) - \|x\|_1| = 0.$

In Section 4, we prove a lower large deviations inequality or, more precisely, the following exponential bound for the probability that the chemical distance between two points  $x$  and  $y$  is abnormally small:

**Theorem 1.6.** *For every  $p > p_c(d)$  and every  $\varepsilon > 0$ , we have*

$$\overline{\lim}_{\|x\|_1 \rightarrow +\infty} \frac{\ln \mathbb{P}_p(0 \leftrightarrow x, D(0, x) \leq (1 - \varepsilon)\mu(x))}{\|x\|_1} < 0.$$

In its main lines, the proof follows the strategy used by Grimmett and Kesten [9] to prove an exponential bound for an analogous quantity concerning first-passage percolation along the first coordinate axis. However, two types of extra difficulties arise in our context: we want to obtain an exponential bound in every direction, not only along the first-coordinate axis, and moreover we want this bound to be uniform with respect to this direction. Thus, we first study in Lemma 4.2 the minimal number of open edges needed to join the origin to hyperplanes with a given direction. Then in Lemma 4.3 we study the minimal number of open edges needed to cross a box oriented along the same direction. All estimates are done uniformly in the direction, and, to conclude the proof of Theorem 1.6, we use a renormalization argument.

Let us discuss briefly the speed – in  $\|x\|_1$  – that appears in the previous large deviations inequalities. Let us first look at the lower large deviations. Choose an  $x \in \mathbb{Z}^d$ , and then, by the classical FKG inequalities, we obtain:

$$\begin{aligned} & \mathbb{P}_p(D(0, (m+n)x) \leq (1 - \varepsilon)(m+n)\mu(x)) \\ & \geq \mathbb{P}_p(D(0, mx) \leq (1 - \varepsilon)m\mu(x), D(mx, (m+n)x) \leq (1 - \varepsilon)n\mu(x)) \\ & \geq \mathbb{P}_p(D(0, mx) \leq (1 - \varepsilon)m\mu(x)) \mathbb{P}_p(D(0, nx) \leq (1 - \varepsilon)n\mu(x)). \end{aligned}$$

Thus, the limit  $\frac{1}{n\|x\|_1} \ln \mathbb{P}_p(D(0, nx) \leq (1 - \varepsilon)n\mu(x))$  exists as  $n$  goes to infinity, and is strictly negative by Theorem 1.6. Now, two distinct cases can occur:

- Either  $\mu(x) = \|x\|_1$ . This corresponds to the existence of a flat face in the asymptotic shape and occurs for some  $x$  as soon as  $p > \vec{p}_c(d)$ , critical probability for oriented percolation on  $\mathbb{Z}^d$  (see Garet and Marchand [7]). In this case, because of the inequality  $D(0, x) \geq \|x\|_1$ , the asymptotic speed in the direction of  $x$  is as fast as it is permitted by the geometry of the lattice: thus, we have

$$\frac{1}{n} \ln \mathbb{P}_p(D(0, nx) \leq (1 - \varepsilon)n\mu(x)) = -\infty.$$

- Or  $\mu(x) > \|x\|_1$ . Then for any  $\varepsilon$  small enough to have  $(1 - \varepsilon)\mu(x) > \|x\|_1$ , we can force a deterministic path with exactly  $n\|x\|_1$  edges with ends 0 and  $nx$  to be open, which implies that the chemical distance between 0 and  $nx$  is less than  $(1 - \varepsilon)n\mu(x)$ :

$$\begin{aligned} \mathbb{P}_p(D(0, nx) \leq (1 - \varepsilon)n\mu(x)) &\geq p^{n\|x\|_1} \\ \text{i.e. } \frac{1}{n\|x\|_1} \ln \mathbb{P}_p(D(0, nx) \leq (1 - \varepsilon)n\mu(x)) &\geq \ln p > -\infty. \end{aligned}$$

Thus the exponential rate in Theorem 1.6 is optimal.

Turning to the upper large deviations, we can once again force a deterministic path with exactly  $\lfloor n(1 + \varepsilon)\|x\|_1 \rfloor + 1$  edges with ends 0 and  $nx$  to be the only open path between 0 and  $nx$ , which implies that the chemical distance between 0 and  $nx$  is larger than  $(1 + \varepsilon)n\mu(x)$ :

$$\mathbb{P}_p(+\infty > D(0, nx) \geq (1 + \varepsilon)n\mu(x)) \geq (p(1 - p)^{2d})^{\lfloor n(1 + \varepsilon)\|x\|_1 \rfloor + 1},$$

whence

$$\lim_{n \rightarrow +\infty} \frac{\ln \mathbb{P}_p(+\infty > D(0, nx) \geq (1 + \varepsilon)n\mu(x))}{n\|x\|_1} \geq (1 + \varepsilon) \ln(p(1 - p)^{2d}).$$

Once again, the exponential rate in Theorem 1.3 is optimal.

This phenomenon is quite different from what is expected of large deviations in first-passage percolation with bounded passage times. Indeed, in the context of first-passage percolation with bounded passage times, building a bad configuration that forces the travel time between 0 and  $nx$  to be too large should cost more than  $c^{n\|x\|_1}$ . We expect then a speed in  $\|x\|_1^d$ , see Kesten [10] and also Chow and Zhang [3]. On the other hand, building a configuration that allows the travel time between 0 and  $nx$  to be too small should typically still need a cost of order  $c^{n\|x\|_1}$ , as it is sufficient to build one “too good” path. Thus the speeds for upper large deviations and lower large deviations in classical first-passage percolation could be different.

Finally, in Section 5, thanks to the uniformity with respect to the direction provided by Theorem 1.2, we will also prove a large deviation inequality for the asymptotic shape of the set  $B_t$  of points that are at a distance less or equal to  $t$  from the origin:

$$B_t = \{x \in \mathbb{Z}^d : 0 \leftrightarrow x, D(0, x) \leq t\}.$$

Since  $p > p_c$ , we can condition the probability measure on the event that the origin 0 is in an infinite cluster, which has positive probability:

$$\mathbb{P}_p(A) = \frac{\mathbb{P}_p(A \cap \{0 \in C_\infty\})}{\mathbb{P}_p(0 \in C_\infty)}.$$

In order to study the convergence of the random set  $B_t/t$ , we also introduce the Hausdorff distance between two non empty compact subsets of  $\mathbb{R}^d$ :

- (1) For  $x \in \mathbb{R}^d$  and  $r \geq 0$ ,  $\mathcal{B}_\mu(x, r) = \{y \in \mathbb{R}^d : \mu(x - y) \leq r\}$ .
- (2) The Hausdorff distance between two non empty compact subsets  $\mathcal{K}_1$  and  $\mathcal{K}_2$  of  $\mathbb{R}^d$  is defined by

$$\mathcal{D}(\mathcal{K}_1, \mathcal{K}_2) = \inf\{r \geq 0 : \mathcal{K}_1 \subset \mathcal{K}_2 + \mathcal{B}_\mu(0, r) \text{ and } \mathcal{K}_2 \subset \mathcal{K}_1 + \mathcal{B}_\mu(0, r)\}.$$

Note that the equivalence of norms on  $\mathbb{R}^d$  ensures that the topology induced by this Hausdorff distance does not depend on the choice of the norm  $\mu$ . We can now state the random set version of Theorem 1.2:

**Theorem 1.7.** *For every  $p > p_c(d)$ , for every  $\varepsilon > 0$ , there exist two strictly positive constants  $A$  and  $B$  such that*

$$\forall t > 0 \quad \mathbb{P}_p \left( \mathcal{D} \left( \frac{B_t}{t}, \mathcal{B}_\mu(0, 1) \right) \geq \varepsilon \right) \leq Ae^{-Bt}.$$

This result improves the following asymptotic shape result that was proved by the authors in Garet and Marchand [7]: for every  $p > p_c(d)$ ,

$$\lim_{t \rightarrow +\infty} \mathcal{D} \left( \frac{B_t}{t}, \mathcal{B}_\mu(0, 1) \right) = 0 \quad \mathbb{P}_p \text{ a.s.}$$

Let us begin now with the main notations and a reminder of some common useful results in supercritical percolation theory. We also include in the following section a technical lemma to build bases of  $\mathbb{R}^d$  that are adapted to the proof of directional estimates.

## 2. NOTATIONS AND PRELIMINARY RESULTS

**2.1. Norms, balls and spheres.** On the space  $\mathbb{R}^d$ , consider the canonical basis  $(e_1, \dots, e_d)$ . For every  $x \in \mathbb{R}^d$ , define the three classical following norms:

$$\|x\|_1 = \sum_{m=1}^d |x_m|, \quad \|x\|_2 = \left( \sum_{m=1}^d |x_m|^2 \right)^{1/2}, \quad \|x\|_\infty = \max_{1 \leq m \leq d} |x_m|.$$

For  $i \in \{1, 2, \infty\}$ ,  $x \in \mathbb{R}^d$  and  $r > 0$ , we define the following balls in  $\mathbb{Z}^d$ :

$$\mathcal{B}_i(x, r) = \{y \in \mathbb{Z}^d : \|y - x\|_i \leq r\} \text{ and } \mathcal{S}_i = \{x \in \mathbb{R}^d : \|x\|_i = 1\}.$$

Recall that

$$\|x\|_\infty \leq \|x\|_2 \leq \|x\|_1 \leq \sqrt{d}\|x\|_2.$$

We also consider the norm  $\mu$  given by Proposition 1.1. We recall the reader that, for  $x \in \mathbb{R}^d$  and  $r > 0$ , we chose to consider, for the norm  $\mu$ , balls in  $\mathbb{R}^d$  rather than in  $\mathbb{Z}^d$ :

$$\mathcal{B}_\mu(x, r) = \{y \in \mathbb{R}^d : \mu(y - x) \leq r\}.$$

We also introduce  $\mu_{\inf} = \inf_{y \in \mathcal{S}_1} \mu(y)$ , which is strictly positive. As  $\mu$  is invariant under the symmetries of the grid, we get the inequality

$$\mu_{\inf} \|x\|_1 \leq \mu(x) \leq \mu(e_1) \|x\|_1.$$

**2.2. Exponential inequalities.** Let us rewrite the result of Antal and Pisztor [1] in an appropriate form to further computations: there exist three strictly positive constants  $A_1$ ,  $B_1$  and  $\rho$ , depending only on the dimension  $d$  and on the percolation parameter  $p > p_c(d)$ , such that

$$(2) \quad \forall x \in \mathbb{Z}^d \quad \mathbb{P}_p(0 \leftrightarrow x, D(0, x) \geq \rho \|x\|_1) \leq A_1 e^{-B_1 \|x\|_1}.$$

We also recall here some classical results concerning the geometry of the clusters in supercritical percolation. Thanks to Chayes, Chayes, Grimmett, Kesten and Schonmann [2], we can control the radius of finite clusters: there exist two strictly positive constants  $A_2$  and  $B_2$  such that

$$(3) \quad \forall r > 0 \quad \mathbb{P}_p(|C(0)| < +\infty, 0 \leftrightarrow \partial \mathcal{B}_1(0, r)) \leq A_2 e^{-B_2 r}.$$

We can also control the size of the holes in the infinite cluster: there exist two strictly positive constants  $A_3$  and  $B_3$  such that

$$(4) \quad \forall r > 0 \quad \mathbb{P}_p(C_\infty \cap \mathcal{B}_1(0, r) = \emptyset) \leq A_3 e^{-B_3 r}$$

When  $d = 2$ , this result follows from the large deviation estimates by Durrett and Schonmann [6]. Their methods can easily be transposed when  $d \geq 3$ . Nevertheless, when  $d \geq 3$ , the easiest way to obtain it seems to use Grimmett and Marstrand [8] slab's result.

Note that in (3) and in (4), the choice of the norm  $\|\cdot\|_1$  is of course irrelevant thanks to the norm equivalence.

**2.3. Stochastic comparison.** First, there is a natural partial order  $\preceq$  on  $\Omega = \{0, 1\}^{\mathbb{Z}^d}$ : for  $\omega$  and  $\omega'$  in  $\Omega$ , one says that  $\omega \preceq \omega'$  holds if and only if  $\omega_e \leq \omega'_e$  for each  $e \in \mathbb{Z}^d$ . Consequently, we say that a function  $f : \omega \rightarrow \mathbb{R}$  is non decreasing if  $f(\omega) \leq f(\omega')$  as soon as  $\omega \preceq \omega'$ . An event  $A$  is said to be non decreasing if its indicator function  $\mathbb{1}_A$  is non decreasing.

Let us now recall the concept of stochastic domination: we say that a probability measure  $\mu$  dominates a probability measure  $\nu$  if

$$\int f d\nu \leq \int f d\mu$$

holds as soon as  $f$  is a non decreasing function. We also write  $\nu \preceq \mu$ .

In the following, it will often be useful to compare locally dependent fields with products of Bernoulli probability measures: remember that a family  $\{Y_x, x \in \mathbb{Z}^d\}$  of random variables is said to be locally dependent if there exists  $k$  such that, for every  $a \in \mathbb{Z}^d$ ,  $Y_a$  is independent of  $\{Y_x : \|x - a\|_2 \geq k\}$ .

**Proposition 2.1** (Liggett, Schonmann, Stacey [11]). *Let  $d, k$  be positive integers. There exists a non-decreasing function  $\pi : [0, 1] \rightarrow [0, 1]$  satisfying  $\lim_{\delta \rightarrow 1} \pi(\delta) = 1$  such that the following holds: if  $Y = \{Y_x, x \in \mathbb{Z}^d\}$  is a locally dependent family of random variables satisfying*

$$\forall x \in \mathbb{Z}^d \quad P(Y_x = 1) \geq \delta,$$

*then  $P_Y \succeq \text{Ber}(\pi(\delta))^{\otimes \mathbb{Z}^d}$ .*

This is in fact a particular case, but sufficient for our purposes, of a more general result given in Liggett, Schonmann and Stacey [11].

**2.4. Some consequences of the symmetry properties.** Let us introduce some notation: we denote by  $\mathfrak{S}_d$  the symmetric group on  $\{1, \dots, d\}$ . For each  $x = (x_1, \dots, x_d) \in \mathbb{R}^d$ ,  $\sigma \in \mathfrak{S}_d$  and  $\varepsilon \in \{+1, -1\}^d$ , we define

$$\Psi_{\sigma, \varepsilon}(x) = \sum_{i=1}^d \varepsilon(i) x_{\sigma(i)} e_i.$$

Then  $\mathcal{O}(\mathbb{Z}^d) = \{\Psi_{\sigma, \varepsilon} : \sigma \in \mathfrak{S}_d, \varepsilon \in \{+1, -1\}^d\}$  is the group of orthogonal transformations that preserve the grid  $\mathbb{Z}^d$ . Consequently, its elements also preserve the norm  $\mu$ .

When studying the chemical distance in a given direction  $x$ , we want to find a basis of  $\mathbb{R}^d$  adapted to the studied direction, *i.e.* made of images of  $x$  by elements of  $\mathcal{O}(\mathbb{Z}^d)$ . The next technical lemma gives the existence of such a basis, and an extra uniformity property in the direction  $y$ :

**Lemma 2.2.** *There exists a constant  $C_d > 0$  such that, for each  $x \in \mathbb{R}^d$ , there exists a family  $(g_{1,x}, g_{2,x}, \dots, g_{d,x}) \in (\mathcal{O}(\mathbb{Z}^d))^d$  with  $g_{1,x} = Id_{\mathbb{R}^d}$  and such that the linear map  $L_x : \mathbb{R}^d \rightarrow \mathbb{R}^d$  defined by*

$$\forall i \in \{1, \dots, d\} \quad L_x(e_i) = g_{i,x}(x)$$

*satisfies:*

$$(5) \quad \forall y \in \mathbb{R}^d \quad C_d \|y\|_1 \|x\|_1 \leq \|L_x(y)\|_1 \leq \|y\|_1 \|x\|_1.$$

*If moreover, for each  $n \in \mathcal{S}_2$ , we set  $(n_1, n_2, \dots, n_d) = (n, g_{2,n}(n), \dots, g_{d,n}(n))$ , then we have*

$$(6) \quad \forall y \in \mathbb{R}^d \quad \frac{C_d}{d^{3/2}} \|y\|_2 \leq \left( \sum_{m=1}^d \langle y, n_m \rangle^2 \right)^{1/2} \leq \sqrt{d} \|y\|_2.$$

Note that in dimension two, this construction is much simpler: if  $R$  denotes the rotation with angle  $\pi/2$ , we can set

$$L_x(e_1) = x \text{ and } L_x(e_2) = R(x).$$

However, this is more intricate in higher dimension. For instance, in dimension three, if  $x = (1, 1, 1)$ , none of the images of  $x$  by  $\mathcal{O}(\mathbb{Z}^d)$  is orthogonal to  $x$ . In particular, even if  $\|x\|_2 = 1$ ,  $L_x$  may not be in  $\mathcal{O}(\mathbb{R}^d)$ .

*Proof.* Choose  $x \in \mathbb{Z}^d$ . Then, for every  $(g_1, \dots, g_d) \in (\mathcal{O}(\mathbb{Z}^d))^d$ , denote by  $A_{g_1, \dots, g_d}^x$  the only linear map which satisfies

$$\forall i \in \{1, \dots, d\} \quad A_{g_1, \dots, g_d}^x(e_i) = g_i(x).$$

Let  $y = \sum_{i=1}^d y_i e_i \in \mathbb{R}^d$ : by linearity, we have

$$\begin{aligned} \|A_{g_1, \dots, g_d}^x(y)\|_1 &= \left\| \sum_{i=1}^d y_i A_{g_1, \dots, g_d}^x(e_i) \right\|_1 = \left\| \sum_{i=1}^d y_i g_i(x) \right\|_1 \\ &\leq \sum_{i=1}^d |y_i| \times \|A_{g_1, \dots, g_d}^x(e_i)\|_1 = \sum_{i=1}^d |y_i| \times \|x\|_1 = \|y\|_1 \|x\|_1. \end{aligned}$$



Now define, for each  $x \in \mathbb{R}^d$ ,

$$b(x) = \max_{(g_2, \dots, g_d) \in \mathcal{O}(\mathbb{Z}^d)^{d-1}} \inf_{y \in \mathcal{S}_1} \|A_{\text{Id}, g_2, \dots, g_d}^x(y)\|_1,$$

and define  $L_x$  to be an application  $A_{g_1, \dots, g_d}^x$  which realizes the maximum in the definition of  $b(x)$ . Let us set

$$C_d = \inf_{x \in \mathcal{S}_1} b(x).$$

It is easy to see that, for every  $x \in \mathbb{R}^d$ ,  $L_x$  satisfies Equation (5) and it only remains to prove that  $C_d > 0$ .

Clearly,  $x \mapsto b(x)$  is a continuous map. So, since  $\mathcal{S}_1$  is a compact set, it is sufficient to prove that  $b(x) \neq 0$  for any  $x \in \mathcal{S}_1$ . Let then  $x \neq 0$ : there exists  $i_0$  such that  $x_{i_0} \neq 0$ . Consider  $i \in \{1, \dots, d\}$ ; we can find  $\sigma \in \mathfrak{S}_d$  with  $\sigma(i) = i_0$ . Now let  $h \in \{-1, +1\}^d$  with  $h(i) = -1$  and  $h(j) = 1$  for  $i \neq j$ : then one has  $\Psi_{\sigma, (1, \dots, 1)}(x) - \Psi_{\sigma, h}(x) = 2x_{i_0}e_i$ . It follows that the vector space generated by  $\{g(x) : g \in \mathcal{O}(\mathbb{Z}^d)\}$  is equal to  $\mathbb{R}^d$ . Then, since  $x \neq 0$ , one can find a family  $(g_2, \dots, g_d) \in (\mathcal{O}(\mathbb{Z}^d))^{d-1}$  such that  $(x, g_2(x), \dots, g_d(x))$  is a basis of  $\mathbb{R}^d$ . Thus,  $A_{g_1, \dots, g_d}^x$  is a linear invertible map. This implies that  $\inf_{\|y\|_1=1} \|A_{g_1, \dots, g_d}^x(y)\|_1 > 0$ , and hence that  $b(x) > 0$ .

Let us prove inequality (6). If we define

$$B(x) = \sum_{m=1}^d \langle n_m, x \rangle e_m,$$

then we have  $\sum_{m=1}^d \langle x, n_m \rangle^2 = \|B(x)\|_2^2$ , and moreover,  $\langle B(e_j), e_i \rangle = \langle n_i, e_j \rangle = \langle L_n(e_i), e_j \rangle = \langle L_n^*(e_j), e_i \rangle$ , which is equivalent to say that  $B = L_n^*$ . Equation (5) and the equivalence of norms imply then that

$$(7) \quad \forall x \in \mathbb{R}^d \quad \|L_n(x)\|_2 \geq \frac{C_d}{d^{3/2}} \|x\|_2.$$

Let us denote by  $\|A\|_2 = \sup_{x \in \mathcal{S}_2} \|Ax\|_2$ . We have:

$$\|L_n^*x\|_2 \geq \frac{1}{\| (L_n^*)^{-1} \|_2} \|x\|_2.$$

It is clear from (7) that  $\| (L_n^*)^{-1} \|_2 \leq \frac{d^{3/2}}{C_d}$ . Applying to  $A = L_n^{-1}$  the classical identity

$$\|A\|_2 = \sup_{x \in \mathcal{S}_2} \|Ax\|_2 = \sup_{x \in \mathcal{S}_2, y \in \mathcal{S}_2} \langle Ax, y \rangle = \sup_{x \in \mathcal{S}_2} \|A^*x\|_2 = \|A^*\|_2,$$

it follows that

$$\forall x \in \mathbb{R}^d \quad \left( \sum_{m=1}^d \langle x, n_m \rangle^2 \right)^{1/2} = \|L_n^*x\|_2 \geq \frac{C_d}{d^{3/2}} \|x\|_2,$$

which concludes the proof of the left-hand side. The right-hand side is obvious.  $\square$

### 3. UPPER LARGE DEVIATIONS: PROOF OF THEOREM 1.3

The aim of this section is to prove the upper large deviations estimate, Theorem 1.3, for the chemical distance. First, we prove the exponential inequality for  $p$  close to 1 given by Theorem 1.4, then we deduce Corollary 1.5 and finally, via a renormalization argument, we prove the large deviations result for every  $p > p_c$ .

**3.1. Chemical distance for  $p$  close to 1: proof of Theorem 1.4.** For this proof, we also consider the  $*$ -topology on  $\mathbb{Z}^d$ : two points  $x, y \in \mathbb{Z}^d$  are  $*$ -neighbours if and only if  $\|x - y\|_\infty = 1$ . A  $*$ -path is a sequence  $(x_1, \dots, x_n)$  such that for every  $i \in \{1, \dots, n-1\}$ ,  $x_i$  and  $x_{i+1}$  are  $*$ -neighbours. A set  $E$  is  $*$ -connected if between any two of its vertices, there exists a  $*$ -path using only vertices in  $E$ .

Given a configuration  $\omega$ , say that a point  $x \in \mathbb{Z}^d$  is *wired* if each bond  $e = (s, t)$  with  $\|s - x\|_\infty \leq 1$  and  $\|t - x\|_\infty \leq 1$  satisfies  $\omega_e = 1$ . Otherwise, say that  $x$  is *unwired*. The wired points should be considered as the good guys, whereas the unwired points are the bad ones. Let  $Y_x = \mathbb{1}_{\{x \text{ is unwired}\}}$ ; then  $x$  is wired if and only if  $Y_x = 0$ .

Let us define  $V(x)(\omega)$  to be the set of points  $y \in \mathbb{Z}^d$  such that there exists a  $*$ -path of unwired vertices from  $x$  to  $y$ , which means that there exist  $n \geq 0$  and  $x = x_0, x_1, \dots, x_n = y$ , with  $Y_{x_i} = 1$  for each  $i \in \{0, \dots, n\}$  and  $\|x_i - x_{i+1}\|_\infty = 1$  for each  $i \in \{0, \dots, n-1\}$ . Note that  $V(x) = \emptyset$  as soon as  $x$  is wired. By definition,  $V(x)$  is always a  $*$ -connected set. For  $x \in \mathbb{Z}^d$ , we define

$$V_1(x) = V(x) + \{-1, 0, 1\}^d \text{ and } V_2(x) = V_1(x) + \{-1, 0, 1\}^d.$$

Let us show that when  $p$  is large enough,  $V(x)$  is almost surely a finite set. For each  $p \in [0, 1]$ , the field  $(Y_x)_{x \in \mathbb{Z}^d}$  is a locally dependent  $\{0, 1\}$  valued stationary field, with  $\lim_{p \rightarrow 1} \mathbb{P}_p(Y_0 = 1) = 1$ . It follows from Proposition 2.1 that there exists  $r_1(p)$  with

$$(\mathbb{P}_p)_Y \succeq \text{Ber}(r_1(p))^{\otimes \mathbb{Z}^d}$$

and  $\lim_{p \rightarrow 1} r_1(p) = 1$ . We can thus find  $p'_1 \in (p_c(d), 1)$  such that for every  $p > p'_1$ ,

$$(8) \quad (2d - 1)(1 - r_1(p)) < 1.$$

By a classical counting argument, this ensures that  $V(x)$  is  $\mathbb{P}_p$  almost surely a finite set. Suppose for the sequel that  $p > p'_1$ . Under this assumption, we have the following result:

**Lemma 3.1.** *Let  $x \in \mathbb{Z}^d$ . Suppose that  $s, t \in V_1(x)$  with  $s \leftrightarrow t$ . Then, there exists an open path from  $s$  to  $t$  which only uses vertices in  $V_2(x)$ .*

*Proof.* Since  $V(x)$  is bounded,  $V(x)^c$  has only finitely many  $*$ -connected components and exactly one of them is of infinite size. Of course, a path from  $s$  to  $t$  can meet one or more of these sets. We will prove that for every connected component  $K$  of  $V(x)^c$  and every open path  $\beta$  from  $s$  to  $t$ , the path  $\beta$  can be modified to get an open path from  $s$  to  $t$  which never enters  $K \setminus V_2(x)$ .

Suppose that  $\beta = (s = x_0, x_1, \dots, x_n = t)$  and define  $i = \min\{k \geq 0 : x_k \in K\}$  and  $j = \max\{k \geq 0 : x_k \in K\}$ . Clearly  $i > 0$  and  $j < n$ . Obviously,  $\{x_i, x_j\} \subset \partial_*^{\text{in}}(K)$ , where  $\partial_*^{\text{in}}(K)$  is the set of points  $x$  in  $K$  such that there exists  $y \in \mathbb{Z}^d \setminus K$  with  $\|x - y\|_\infty = 1$ . By part (ii) of lemma 2.1 in Deuschel and Pisztora [5], the set  $\partial_*^{\text{in}}(K)$  is  $*$ -connected. Note that by definition of  $V(x)$ , every point of  $\partial_*^{\text{in}}(K)$  is wired. But if  $a$  and  $b$  are  $*$ -neighbours, then  $b \in a + \{-1, 0, 1\}^d$ . Since  $a$  is wired, there exists an open path from  $a$  to  $b$  using only edges in  $a + \{-1, 0, 1\}^d$ . Then, there exists an open path from  $x_i$  to  $x_j$  which only uses points in  $\partial_*^{\text{in}}(K) + \{-1, 0, 1\}^d \subset V_1(x) + \{-1, 0, 1\}^d = V_2(x)$ .  $\square$

We can now come back to the proof of the theorem. Let  $\alpha > 0$ . Choose  $x$  in  $\mathbb{Z}^d$  and let  $\gamma = (0 = x_0, x_1, \dots, x_n = x)$  be a fixed path from 0 to  $x$  with the minimal

possible number of edges  $n = \|x\|_1$ . We let

$$V = \bigcup_{y \in \gamma} V(y).$$

Now suppose that there exists an open path from 0 to  $x$ . Let us prove that under this condition, we can find an open path from 0 to  $x$  which only uses points in  $\gamma \cup (V + \{-2, -1, 0, 1, 2\}^d)$ .

Let  $i$  be the greatest integer in  $\{0, \dots, n\}$  such that there exists an open path from 0 to  $x_i$  which only uses points in  $\gamma \cup (V + \{-2, -1, 0, 1, 2\}^d)$ . Note that since  $0 \leftrightarrow x_i$  and  $0 \leftrightarrow x$ , we have  $x_i \leftrightarrow x$ . We want to prove that  $i = n$ .

Suppose by contradiction that  $i < n$ . The maximality of  $i$  implies that  $x_i$  can not be wired. So  $V(x_i) \supset \{x_i\}$ , therefore it is not empty, which allows to define  $j = \max\{k \in \{i+1, \dots, n\} : x_k \in V(x_i)\}$ .

- If  $j = n$ , then  $x_i$  and  $x$  belong to  $V(x_i)$ . Since  $x_i \leftrightarrow x$ , it follows from the previous lemma that there exists an open path from  $x_i$  to  $x$  which only uses vertices in  $V_2(x_i)$ . Joint with the part of the path  $\gamma$  from 0 to  $x_i$ , this gives an open path from 0 to  $x$  which only uses points that are in  $\gamma \cup (V + \{-2, -1, 0, 1, 2\}^d)$ , which is a contradiction.
- If  $j < n$ , let  $K$  be the connected component of  $V(x_i)^c$  which contains  $x$ . On one side,  $x_i \notin K$ , so there exists  $l \in \{i+1, \dots, n\}$  such that  $x_l \in \partial_*^{\text{in}}(K)$ . On the other side,  $x_i \notin K$  and  $x \leftrightarrow x_{i-1}$  by definition of  $i$ , thus there exists  $z \in \partial_*^{\text{in}}(K)$  such that  $x \leftrightarrow z$ . Since points in  $\partial_*^{\text{in}}(K)$  are linked,  $x_l \leftrightarrow z$ , but  $x \leftrightarrow z$  and  $x_i \leftrightarrow x$  so finally  $x_i \leftrightarrow x_l$ . Since  $\{x_i, x_l\} \subset V_1(x_i)$ , by the previous lemma we see that there exists an open path from  $x_i$  to  $x_l$  using only points of  $V_2(x_i)$ , which contradicts again the maximality of  $i$ .

Thus under the assumption that 0 and  $x$  belong to the same cluster, we have constructed an open path from 0 to  $x$  which only uses points in  $\gamma \cup (V + \{-2, -1, 0, 1, 2\}^d)$ , and thus is not too far away from the deterministic path  $\gamma$ .

Define, for every  $y \in \mathbb{Z}^d$ , the event

$$F_y = \bigcup_{z: \|z-y\|_\infty \leq 2} \{z \text{ is unwired}\}$$

and set  $Z_y = \mathbb{1}_{F_y}$ . Since  $(Z_y)_{y \in \mathbb{Z}^d}$  is locally dependent with  $\lim_{p \rightarrow 1} \mathbb{P}_p(Z_y = 1) = 0$ , it follows from Proposition 2.1 that there exists  $r_2(p)$  with

$$(\mathbb{P}_p)_Z \preceq \text{Ber}(r_2(p))^{\otimes \mathbb{E}^d}$$

and  $\lim_{p \rightarrow 1} r_2(p) = 0$ . Note that by definition of  $(Z_y)_{y \in \mathbb{Z}^d}$ , the open path we built only uses points  $y$  that are in  $\gamma$  or satisfy  $Z_y = 1$ . Moreover, if we suppose now that  $D(0, x) \geq (1 + \alpha)\|x\|_1$ , the length of this path is also greater than  $(1 + \alpha)\|x\|_1$ .

The idea is now the following: if  $0 \leftrightarrow x$  and  $D(0, x) \geq (1 + \alpha)\|x\|_1$ , then by the previous construction, there must exist an open path between 0 and  $x$  with length larger than  $(1 + \alpha)\|x\|_1$  and that contains only points in  $\gamma \cup (V + \{-2, -1, 0, 1, 2\}^d)$ : this path must then contain at least  $\alpha\|x\|_1$  points such that  $Z_y = 1$ , which is unlikely when  $p$  is large enough. Let us turn this crude argument into a rigorous proof via a counting argument.

Let  $\Gamma$  be the family of self-avoiding paths from 0 to  $x$ . Clearly, if  $\beta \in \Gamma$ ,

$$\mathbb{P}_p(\forall y \in \beta \setminus \gamma, \quad Z_y = 1) \leq r^{|\beta| - |\gamma|},$$

where  $r = r_2(p)$  and  $|\beta|$  denotes the number of edges in  $\beta$ . Remember that  $\lim_{p \rightarrow 1} r_2(p) = 0$ . We can thus find  $p'_2(\alpha) \in (p_c(d), 1)$  such that  $\forall p > p'_2(\alpha)$ ,  $r = r_2(p)$  satisfies

$$(9) \quad (2d-1)r < 1 \text{ and } (2d-1)^{1+\alpha} r^\alpha < 1.$$

It follows that

$$\begin{aligned} & \mathbb{P}_p(0 \leftrightarrow x, D(0, x) \geq (1+\alpha)\|x\|_1) \\ & \leq \sum_{\beta \in \Gamma: |\beta| \geq (1+\alpha)|\gamma|} \mathbb{P}_p(\forall i \in \beta \setminus \gamma, Z_i = 1) \\ & \leq \sum_{\beta \in \Gamma: |\beta| \geq (1+\alpha)|\gamma|} r^{|\beta| - |\gamma|} \\ & \leq \sum_{n=(1+\alpha)|\gamma|}^{+\infty} (2d)(2d-1)^{n-1} r^{n-|\gamma|} \\ & \leq \frac{2dr^{-|\gamma|}}{(2d-1)(1-(2d-1)r)} ((2d-1)r)^{(1+\alpha)|\gamma|} \\ & \leq \frac{2d}{(2d-1)(1-(2d-1)r)} ((2d-1)^{1+\alpha} r^\alpha)^{|\gamma|}. \end{aligned}$$

As  $|\gamma| = \|x\|_1$ , taking  $p'(\alpha) = \max\{p'_1(\alpha), p'_2(\alpha)\}$  – quantities respectively defined in (8) and (9) – ends the proof of the Theorem.

**3.2. Continuity of  $\mu_p$  at  $p = 1$ : proof of Corollary 1.5.** Let  $\alpha > 0$  and  $x \in \mathbb{Z}^d$ . Using the Borel-Cantelli lemma and Theorem 1.4, we obtain for  $p > p'(\alpha)$ :

$$\overline{\lim}_{n \rightarrow +\infty} \mathbb{1}_{\{nx \leftrightarrow 0\}} \frac{D(0, nx)}{n} \leq (1+\alpha)\|x\|_1 \quad \overline{\mathbb{P}}_p \text{ a.s.}$$

By the very definition of  $\mu_p$ , the left-hand side is equal to  $\mu_p(x)$ . Using moreover the fact that  $\mu_p(x) \geq \|x\|_1$ , we have proved

$$\forall \alpha > 0 \quad \forall p > p'(\alpha) \quad \forall x \in \mathbb{Z}^d \quad \|x\|_1 \leq \mu_p(x) \leq (1+\alpha)\|x\|_1.$$

By homogeneity and continuity of  $\mu_p$  and  $\|\cdot\|_1$ , we obtain the same property for  $x \in \mathbb{Q}^d$ , and next for  $x \in \mathbb{R}^d$ :

$$\forall \alpha > 0 \quad \forall p > p'(\alpha) \quad \forall x \in \mathbb{R}^d \quad \|x\|_1 \leq \mu_p(x) \leq (1+\alpha)\|x\|_1,$$

which ends the proof.

**3.3. Upper large deviations: proof of Theorem 1.3.** We can now prove the upper large deviations result Theorem 1.3 for the chemical distance for every  $p > p_c$ .

Step 1: choice of constants.

Let  $p > p_c(d)$  and  $\varepsilon > 0$  be fixed.

As  $\mu$  is a norm, it is bounded away from 0 on the compact set  $\mathcal{S}_1$ , and we can choose  $\eta > 0$  small enough to have

$$(10) \quad \forall \hat{x} \in \mathcal{S}_1 \quad \left(1 + \frac{3\eta}{2\rho}\right) (1+\eta)^2 \mu(\hat{x}) + 2\eta < (1+\varepsilon)\mu(\hat{x}) \quad \text{and} \quad \eta < \frac{8}{9}\rho,$$

where  $\rho$  has been defined in (2). Note also

$$(11) \quad \alpha = \frac{\eta}{2\rho}.$$

From now on, let us denote by  $M$  a fixed integer which is such that  $M \geq \frac{d}{\eta} \max(\frac{\mu(e_1)}{2}, \frac{\rho}{3C_d})$ , where  $C_d$  is the constant given by Lemma 2.2.

For every  $\hat{x} \in \mathbb{R}^d \cap \mathcal{S}_1$ , there exists  $\hat{r} \in \frac{1}{M}\mathbb{Z}^d \cap \mathcal{S}_1$  such that  $\|\hat{x} - \hat{r}\|_1 \leq \frac{d}{2M}$ . Then, by the previous choice of  $M$ , one has

$$(12) \quad \|\hat{x} - \hat{r}\|_1 \leq \frac{d}{2M} \leq \frac{C_d \alpha}{3} \quad \text{and} \quad |\mu(\hat{x}) - \mu(\hat{r})| \leq \mu(e_1) \|\hat{x} - \hat{r}\|_1 \leq \eta.$$

Intuitively,  $\hat{r}$  is a rational direction that approaches the “real” direction  $\hat{x}$ . Note that the result in Theorem 1.3 is uniform in the direction, and the proof of this uniformity will use the fact that  $\frac{1}{M}\mathbb{Z}^d \cap \mathcal{S}_1$  is a finite set.

Step 2: renormalization.

For  $x \in \mathbb{Z}^d$  and  $N \in \mathbb{Z}_+$ , let us define the following set around  $Nx$ :

$$\mathcal{I}_x^N = \left\{ y \in \mathcal{B}_1(Nx, \sqrt{N}) : y \leftrightarrow \partial \mathcal{B}_1(Nx, N) \right\},$$

where  $\partial \mathcal{B}_1(Nx, N) = \{y \in \mathbb{Z}^d : \|Nx - y\|_1 = N\}$ . We define the related random variable  $I_x^N$  by

$$I_x^N = \begin{cases} Nx & \text{if } \mathcal{I}_x^N = \emptyset \\ \inf \mathcal{I}_x^N & \text{otherwise,} \end{cases}$$

where  $\inf \mathcal{I}_x^N$  denotes the point in  $\mathcal{I}_x^N$  which is the closest to  $Nx$ . If there are several, use for instance the lexicographic order on the coordinates to choose a unique point. Note that

- the random variable  $I_x^N$  only depends on the states of the edges in  $\mathcal{B}_1(Nx, N)$ .
- $\|Nx - I_x^N\|_1 \leq \sqrt{N}$ .

Since  $I_x^N$  is close to  $Nx$ , the chemical distance  $D(I_0^N, I_x^N)$  should be of the same order as  $N\mu(x)$ . This is rigorously proved in the following lemma:

**Lemma 3.2.** *The following results hold  $\mathbb{P}_p$  almost surely:*

- For each  $x \in \mathbb{Z}^d$ ,  $I_x^N \leftrightarrow \infty$  for large  $N$ .
- The sequence  $(I_0^N)_{N \geq 1}$  is convergent.
- For each  $x \in \mathbb{Z}^d$ ,

$$\frac{D(I_0^N, I_x^N)}{N} \rightarrow \mu(x).$$

*Proof.* • The first assertion easily follows from Borel-Cantelli arguments. At first, it follows from the exponential decay of the radius of finite clusters – see Equation (3) – that  $\mathbb{P}_p$  almost surely,  $\mathcal{I}_x^N = B(Nx, \sqrt{N}) \cap C_\infty$  for large  $N$ . The fact that  $B(Nx, \sqrt{N}) \cap C_\infty$  is  $\mathbb{P}_p$  almost surely non empty for large  $N$  is now a consequence of (4).

• Let us denote by  $H$  the smallest element of  $C_\infty$ , i.e. the point in  $C_\infty$  which is the closest to 0 and among these points if there are several, the one which is the smallest for the lexicographic order on the coordinates. For large  $N$ , we have  $H \in B(0, \sqrt{N})$ , so  $(I_0^N)_{N \geq 1}$  converges to  $H$ .

• If  $x = 0$ , there is nothing to prove. Suppose then that  $x \neq 0$ . By the previous point, the sequence with general term  $D(I_0^N, I_x^N)/N$  has the same asymptotic behaviour as the sequence with general term  $D(H, I_x^N)/N$ . It was proved in lemma 5.7 of Garet and Marchand [7] that for every  $\varepsilon > 0$ ,

$$\mathbb{P}_p \left( \begin{array}{c} \exists M > 0 \quad \forall y \in \mathbb{Z}^d \\ (\|y\|_1 \geq M \text{ and } y \leftrightarrow 0) \implies |D(0, y) - \mu(y)| \leq \varepsilon \|y\|_1 \end{array} \middle| 0 \leftrightarrow \infty \right) = 1.$$

By taking  $M = |C(0)|$  when  $0 \not\rightarrow \infty$ , we can remove the conditioning and obtain:

$$\mathbb{P}_p \left( \begin{array}{c} \exists M > 0 \quad \forall y \in \mathbb{Z}^d \\ (\|y\|_1 \geq M \text{ and } y \leftrightarrow 0) \implies |D(0, y) - \mu(y)| \leq \varepsilon \|y\|_1 \end{array} \right) = 1.$$

Using translation invariance, this implies:

$$\mathbb{P}_p \left( \begin{array}{c} \forall x \in \mathbb{Z}^d \quad \exists M_x > 0 \quad \forall y \in \mathbb{Z}^d \\ (\|y\|_1 \geq M_x \text{ and } y \leftrightarrow x) \implies |D(x, y) - \mu(y)| \leq \varepsilon \|y\|_1 \end{array} \right) = 1.$$

This implies

$$\lim_{N \rightarrow \infty} \frac{D(I_0^N, I_x^N) - \mu(I_x^N)}{\|I_x^N\|_1} = 0 \quad \mathbb{P}_p \text{ a.s.}$$

Since  $\|Nx - I_x^N\|_1 \leq \sqrt{N}$ , one has  $|N\mu(x) - \mu(I_x^N)| \leq \sqrt{N}\mu(e_1)$  and  $\|I_x^N\|_1 \sim N\|x\|_1$ ; the desired result follows.  $\square$

We can now introduce a macroscopic percolation: in order to study the chemical distance in the direction  $\hat{r}$ , we are going to build a large grid, with mesh  $NM$ , whose axes are adapted to  $M\hat{r}$ : the large grid is the image by  $NL_{M\hat{r}}$  of the grid  $\mathbb{Z}^d$ , where  $L_{M\hat{r}}$  is given in Lemma 2.2 (see Figure 1). The macroscopic edge  $\bar{e} = \{\bar{x}, \bar{y}\}$  has macroscopic ends  $\bar{x}$  and  $\bar{y}$  that correspond in the microscopic graph to the points  $NL_{M\hat{r}}(\bar{x})$  and  $NL_{M\hat{r}}(\bar{y})$ ; for instance, the macroscopic vertex with coordinates  $(1, 0, \dots, 0)$  corresponds to the vertex  $NM\hat{r}$  in the microscopic lattice. By construction of  $L_{M\hat{r}}$ , we expect the chemical distance between neighborhoods of the microscopic ends of any macroscopic edge to have a value of order  $NM\mu(\hat{r})$ . If this event occurs, we say that the corresponding macroscopic edge  $\bar{e}$  is open, which should happen with high probability.

**Lemma 3.3.** *For each  $\hat{r} \in \frac{1}{M}\mathbb{Z}^d \cap \mathcal{S}_1$ , for each positive integer  $N$ , we define a field  $(R_{\bar{e}}^{N, \hat{r}})_{\bar{e} \in \mathbb{E}^d}$ : if  $\bar{e} = \{\bar{x}, \bar{y}\}$ ,*

$$R_{\bar{e}}^{N, \hat{r}} = \mathbb{1}_{G_{\bar{e}}^{N, \hat{r}}} \quad \text{and} \quad G_{\bar{e}}^{N, \hat{r}} = \left\{ D \left( I_{NL_{M\hat{r}}(\bar{x})}^N, I_{NL_{M\hat{r}}(\bar{y})}^N \right) \leq NM\mu(\hat{r})(1 + \eta) \right\}.$$

*Then there exists a function  $\bar{p} : \mathbb{Z}_+ \rightarrow [0, 1]$ , independent of the choice of  $\hat{r} \in \frac{1}{M}\mathbb{Z}^d \cap \mathcal{S}_1$  such that:*

$$\lim_{N \rightarrow +\infty} \bar{p}(N) = 1 \quad \text{and} \quad \mathbb{P}_{R^{N, \hat{r}}} \succeq \text{Ber}(\bar{p}(N))^{\otimes \mathbb{E}^d},$$

*where  $\mathbb{P}_{R^{N, \hat{r}}}$  denotes the law of the field  $(R_{\bar{e}}^{N, \hat{r}})_{\bar{e} \in \mathbb{E}^d}$  on  $\{0, 1\}^{\mathbb{E}^d}$ .*

*Proof.* Our aim is to apply once again the comparison result of Proposition 2.1.

Note that for any choice of  $\hat{r} \in \frac{1}{M}\mathbb{Z}^d \cap \mathcal{S}_1$ , and any edge  $\bar{e} = \{\bar{x}, \bar{y}\}$ , the macroscopic event  $G_{\bar{e}}^{N, \hat{r}}$  only depends on states of the microscopic edges in the ball  $\mathcal{B}_1(NL_{M\hat{r}}(\bar{x}), NM(2 + (1 + \eta)\mu(e_1)))$ . Note also that, by Lemma 2.2, we have

$$\begin{aligned} \|\bar{y} - \bar{x}\|_1 &> \frac{2}{C_d} (2 + (1 + \eta)\mu(e_1)) \\ \Rightarrow \|L_{M\hat{r}}(\bar{y} - \bar{x})\|_1 &> 2M(2 + (1 + \eta)\mu(e_1)) \\ \Rightarrow \|NL_{M\hat{r}}(\bar{y}) - NL_{M\hat{r}}(\bar{x})\|_1 &> 2NM(2 + (1 + \eta)\mu(e_1)). \end{aligned}$$

The field  $(R_{\bar{e}}^{N, \hat{r}})_{\bar{e} \in \mathbb{E}^d}$  is locally dependent, for some constant  $k$  that does not depend on  $N$ , nor on the choice of  $\hat{r} \in \frac{1}{M}\mathbb{Z}^d \cap \mathcal{S}_1$ , nor on  $M$ . Since  $(R_{\bar{e}}^{N, \hat{r}})_{\bar{e} \in \mathbb{E}^d}$  is invariant

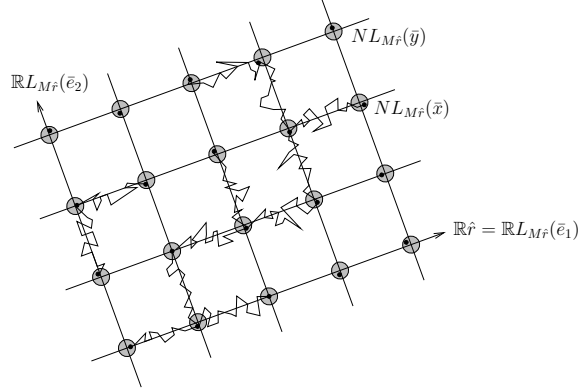


FIGURE 1. The macroscopic grid  $NL_{M\hat{r}}(\mathbb{Z}^d)$  adapted to the direction  $\hat{r}$ . The vertex  $\bar{x}$  of the macroscopic grid has coordinates  $NL_{M\hat{r}}(\bar{x})$  in the microscopic grid. It is surrounded by a small ball with radius  $\sqrt{N}$  which contains a black point, denoted by  $I_{L_{M\hat{r}}}^N(\bar{x})$ , which is the point of the infinite cluster that is the closest to  $NL_{M\hat{r}}(\bar{x})$  in the microscopic grid. The macroscopic edge between  $\bar{x}$  and  $\bar{y}$  is said to be open if  $D(I_{L_{M\hat{r}}}^N(\bar{x}), I_{L_{M\hat{r}}}^N(\bar{y})) \leq NM\mu(\hat{r})(1+\eta)$ , which happens with a probability going to 1 as  $N$  goes to infinity. As the states of the macroscopic edges are locally dependent, by choosing  $N$  large enough, the chemical distance in the macroscopic grid can be made very close to the  $l^1$ -distance.

under translations and symmetries of the grid  $\mathbb{Z}^d$ , we only have to prove that

$$\lim_{N \rightarrow +\infty} \mathbb{P}_p \left( G_{\bar{e}}^{N, \hat{r}} \right) = 1$$

uniformly in  $\hat{r}$  for the edge  $\bar{e} = (0, e_1)$ . But the set  $\frac{1}{M}\mathbb{Z}^d \cap \mathcal{S}_1$  is finite, so it is sufficient to prove this limit for any  $\hat{r} \in \frac{1}{M}\mathbb{Z}^d \cap \mathcal{S}_1$ . By applying Lemma 3.2 to  $x = L_{M\hat{r}}(e_1)$  for a given  $\hat{r} \in \frac{1}{M}\mathbb{Z}^d \cap \mathcal{S}_1$  and using the fact that almost sure convergence implies convergence in probability, we end the proof of Lemma 3.3.  $\square$

Choose now  $N$  large enough to be sure that  $\bar{p}(N)$  given by Lemma 3.3 satisfies

$$(13) \quad \bar{p}(N) > p' \left( \frac{1+3\alpha}{1+2\alpha} - 1 \right) > p_c(d),$$

where  $p'(\cdot)$  is defined in Theorem 1.4 and  $\alpha$  has been defined in (11). For each  $\hat{r} \in \frac{1}{M}\mathbb{Z}^d \cap \mathcal{S}_1$ , we can construct a macroscopic percolation with mesh  $NM$ : we say that the edge  $\bar{e} \in \mathbb{E}^d$  is open in the macroscopic percolation associated to  $\hat{r}$  if the event  $G_{\bar{e}}^{N, \hat{r}}$  occurs, and closed otherwise. This induces a dependent percolation model on the macroscopic edges: all vertices in the macroscopic lattice will be denoted by an overlined letter, the infinite cluster of this macroscopic will be denoted  $\overline{\mathcal{C}}_\infty$ , while the chemical distance in this macroscopic lattice will still be denoted by  $D$ . The previous lemma compares this locally dependent macroscopic percolation with i.i.d Bernoulli percolation, and the choice we made for  $N$  allows us to use the result of Theorem 1.4.

The strategy is now the following: for a large  $x \in \mathbb{Z}^d$ , choose a  $\hat{r}$  whose direction is close to the one of  $x$  and build the macroscopic percolation associated to  $\hat{r}$ . Use Theorem 1.4 to find a macroscopic path from a point not too far from 0 to a point not too far from  $x$ , and whose length is well-controlled. Then come back to the initial microscopic percolation, and verify that the existence of this macroscopic path implies, on the event  $0 \leftrightarrow x$ , the existence of an open microscopic path whose length is also well-controlled.

Step 3: Construction of the macroscopic and microscopic paths.

From now on, we suppose, without loss of generality, that  $x \in \mathbb{Z}^d$  satisfies

$$(14) \quad \|x\|_1 \geq \frac{8\sqrt{N}}{\alpha}.$$

We emphasize that the constants  $\alpha$  and  $N$  have been defined in (11) and (13) before any choice of  $x$ .

Then, we associate to  $\hat{x} = x/\|x\|_1$  an approximate  $\hat{r} \in \frac{1}{M}\mathbb{Z}^d \cap \mathcal{S}_1$  satisfying Equation (12).

We build the macroscopic percolation associated to  $\hat{r}$  and denote by

$$(15) \quad \bar{x} = \lfloor \|x\|_1 / (NM) \rfloor e_1$$

the vector in the coordinates of the macroscopic grid that approximates  $x$ , where  $\lfloor t \rfloor$  denotes the integer part of the real number  $t$ .

Remember that, thanks to Lemma 2.2, the application  $L_{M\hat{r}}$  maps  $e_1$  to  $M\hat{r}$  and satisfies

$$(16) \quad \begin{aligned} & \forall i \in \{1, \dots, d\} \quad \mu(L_{M\hat{r}}(e_i)) = M\mu(\hat{r}) \text{ and } \|L_{M\hat{r}}(e_i)\|_1 = M, \\ & \text{and } \forall \hat{r} \in \frac{1}{M}\mathbb{Z}^d \cap \mathcal{S}_1 \quad \forall t \in \mathbb{R}^d \quad C_d M \|t\|_1 \leq \|L_{M\hat{r}}(t)\|_1 \leq M \|t\|_1. \end{aligned}$$

For each  $z \in \mathbb{Z}^d$  and each  $r > 0$ , we define the annulus

$$\mathcal{A}(z, r) = \{y \in \mathbb{Z}^d : r/2 \leq \|y - z\|_1 \leq r\}$$

and consider the following “good” event of  $\{0, 1\}^{\mathbb{E}^d}$  in the macroscopic percolation:

$$G = \left\{ \begin{array}{l} \exists \bar{a} \in \mathcal{A}(0, \alpha\|\bar{x}\|_1) \quad \exists \bar{b} \in \mathcal{A}(\bar{x}, \alpha\|\bar{x}\|_1) \text{ such that} \\ \bar{a} \leftrightarrow \bar{b} \text{ and } D(\bar{a}, \bar{b}) \leq (1 + 3\alpha)\|\bar{x}\|_1 \end{array} \right\}.$$

Note that for the complementary set of  $G$ , we have:

$$\begin{aligned} G^c & \subset \{ \mathcal{A}(0, \alpha\|\bar{x}\|_1) \cap \bar{\mathcal{C}}_\infty = \emptyset \} \cup \{ \mathcal{A}(\bar{x}, \alpha\|\bar{x}\|_1) \cap \bar{\mathcal{C}}_\infty = \emptyset \} \\ & \cup \bigcup_{\substack{\bar{a} \in \mathcal{B}_1(\bar{0}, \alpha\|\bar{x}\|_1) \\ \bar{b} \in \mathcal{B}_1(\bar{x}, \alpha\|\bar{x}\|_1)}} \{ \bar{a} \leftrightarrow \bar{b}, D(\bar{a}, \bar{b}) > (1 + 3\alpha)\|\bar{x}\|_1 \} \\ & \subset \{ \mathcal{A}(0, \alpha\|\bar{x}\|_1) \cap \bar{\mathcal{C}}_\infty = \emptyset \} \cup \{ \mathcal{A}(\bar{x}, \alpha\|\bar{x}\|_1) \cap \bar{\mathcal{C}}_\infty = \emptyset \} \\ & \cup \bigcup_{\substack{\bar{a} \in \mathcal{B}_1(\bar{0}, \alpha\|\bar{x}\|_1) \\ \bar{b} \in \mathcal{B}_1(\bar{x}, \alpha\|\bar{x}\|_1)}} \left\{ \bar{a} \leftrightarrow \bar{b}, D(\bar{a}, \bar{b}) > \frac{1 + 3\alpha}{1 + 2\alpha} \|\bar{b} - \bar{a}\|_1 \right\}. \end{aligned}$$

As  $G$  is an increasing event, we have by Lemma 3.3:

$$\mathbb{P}_{R^{N, \hat{r}}}(G^c) \leq \text{Ber}(\bar{p}(N))^{\otimes \mathbb{E}^d}(G^c).$$



It follows that

$$\begin{aligned} \mathbb{P}_{R^\varepsilon, N}(G^c) &\leq 2\mathbb{P}_{\bar{p}(N)}(\mathcal{B}_1(0, \alpha\|\bar{x}\|_1) \cap C_\infty = \emptyset) \\ &\quad + \sum_{\substack{\bar{a} \in \mathcal{B}_1(0, \alpha\|\bar{x}\|_1) \\ \bar{b} \in \mathcal{B}_1(\bar{x}, \alpha\|\bar{x}\|_1)}} \mathbb{P}_{\bar{p}(N)}\left(\bar{a} \leftrightarrow \bar{b}, D(\bar{a}, \bar{b}) > \frac{1+3\alpha}{1+2\alpha}\|\bar{a} - \bar{b}\|_1\right); \end{aligned}$$

By the choice (13) we made for  $N$ , the inequality  $\bar{p}(N) > p_c(d)$  is satisfied, so, by Equation (4),

$$\mathbb{P}_{\bar{p}(N)}(\mathcal{B}_1(0, \alpha\|\bar{x}\|_1) \cap C_\infty = \emptyset) \leq A_3 e^{-B_3 \alpha \|\bar{x}\|_1}.$$

Moreover, our choice of  $N$  in (13) was intended to apply Theorem 1.4: thus, there exist two strictly positive constants  $A$  and  $B$  such that

$$\begin{aligned} \forall \bar{a} \in \mathcal{B}_1(0, \alpha\|\bar{x}\|_1) \quad \forall \bar{b} \in \mathcal{B}_1(\bar{x}, \alpha\|\bar{x}\|_1) \\ \mathbb{P}_{\bar{p}(N)}\left(\bar{a} \leftrightarrow \bar{b}, D(\bar{a}, \bar{b}) > \frac{1+3\alpha}{1+2\alpha}\|\bar{a} - \bar{b}\|_1\right) \leq A e^{-B\|\bar{b} - \bar{a}\|_1}. \end{aligned}$$

Thus we obtain:

$$\begin{aligned} &\mathbb{P}_{R^\varepsilon, N}(G^c) \\ &\leq 2A_3 e^{-B_3 \alpha \|\bar{x}\|_1} + (C\alpha\|\bar{x}\|_1)^{2d} A e^{-B(1-2\alpha)\|\bar{x}\|_1}, \\ &\leq 2A_3 e^{-B_3 \alpha \|x\|_1 / NM} + (C\alpha(\|x\|_1 / NM + 1))^{2d} A e^{-B(1-2\alpha)\|x\|_1 / NM}, \end{aligned}$$

where  $C$  is a constant depending only on the dimension of the grid  $\mathbb{Z}^d$ .

So, with a probability tending to 1 exponentially fast with  $\|x\|_1$ , there exists a path in the macroscopic percolation from a point in the set  $\mathcal{A}(0, \alpha\|\bar{x}\|_1)$  to a point in the set  $\mathcal{A}(\bar{x}, \alpha\|\bar{x}\|_1)$  which uses only edges  $\bar{e}$  such that  $G_{\bar{e}}^{N, \hat{r}}$  holds and whose length is smaller or equal to  $(1+3\alpha)\|\bar{x}\|_1$ . This implies the existence of a microscopic open path from some microscopic vertex  $S \in NL_{M\hat{r}}\mathcal{A}(0, \alpha\|\bar{x}\|_1) + \mathcal{B}_1(0, \sqrt{N})$  to some microscopic vertex  $T \in NL_{M\hat{r}}\mathcal{A}(\bar{x}, \alpha\|\bar{x}\|_1) + \mathcal{B}_1(0, \sqrt{N})$ , and whose length, by Lemma 3.3, is smaller than  $(1+3\alpha)\|\bar{x}\|_1(1+\eta)NM\mu(\hat{r}) \leq (1+3\alpha)(1+\eta)^2\|x\|_1\mu(\hat{x})$  by the choice of  $\hat{r}$  in (12) and the definition (15) of  $\bar{x}$ .

Step 4: It remains now to link the ends  $S$  and  $T$  of this microscopic path to 0 and  $x$  respectively, and to prove that with high probability, these links are very short.

Thanks to the definition of the annuli and to Equations (16) and (14), one has

$$\left\{ \begin{array}{l} \frac{3}{8}C_d\alpha\|x\|_1 \leq \frac{C_d\alpha\|x\|_1}{2} - \sqrt{N} \leq \|S\|_1 \leq \alpha\|x\|_1 + \sqrt{N} \leq \frac{9}{8}\alpha\|x\|_1, \\ \frac{3}{8}C_d\alpha\|x\|_1 \leq \frac{C_d\alpha\|x\|_1}{2} - \sqrt{N} \leq \|T - \|x\|_1\hat{r}\|_1 \leq \alpha\|x\|_1 + \sqrt{N} \leq \frac{9}{8}\alpha\|x\|_1. \end{array} \right.$$

It follows that the distance between  $S$  and  $T$  is at least

$$\|x\|_1 - 2\left(\frac{9}{8}\alpha\|x\|_1\right) \geq \left(1 - \frac{9}{4}\alpha\right)\|x\|_1.$$

So, by Equation (3), we have

$$\begin{aligned} &\mathbb{P}_p(S \leftrightarrow T, |C(S)| < +\infty) \\ &\leq \sum_{\frac{3}{8}C_d\alpha\|x\|_1 \leq \|s\|_1 \leq \frac{9}{8}\alpha\|x\|_1} \mathbb{P}_p\left(s \leftrightarrow \partial B\left(s, \left(1 - \frac{9}{4}\alpha\right)\|x\|_1\right), |C(s)| < +\infty\right) \\ &\leq \left(1 + 2 \times \frac{9}{8}\alpha\|x\|_1\right)^d A_2 e^{-B_2\left(1 - \frac{9}{4}\alpha\right)\|x\|_1}. \end{aligned}$$

So with a probability tending to 1 exponentially fast with  $\|x\|_1$ ,  $S$  and  $T$  belong to the infinite cluster. Now,

$$\begin{aligned}
& \mathbb{P}_p(S \leftrightarrow 0, D(0, S) \geq \eta\|x\|_1) \\
& \leq \sum_{\frac{3}{8}C_d\alpha\|x\|_1 \leq \|s\|_1 \leq \frac{9}{8}\alpha\|x\|_1} \mathbb{P}_p(0 \leftrightarrow s, D(0, s) \geq \eta\|x\|_1) \\
& \leq \sum_{\frac{3}{8}C_d\alpha\|x\|_1 \leq \|s\|_1 \leq \frac{9}{8}\alpha\|x\|_1} \mathbb{P}_p(0 \leftrightarrow s, D(0, s) \geq \rho\|s\|_1) \\
& \leq \sum_{\frac{3}{8}C_d\alpha\|x\|_1 \leq \|s\|_1 \leq \frac{9}{8}\alpha\|x\|_1} A_1 e^{-B_1\|s\|_1} \\
& \leq \left(1 + 2 \times \frac{9}{8}\alpha\|x\|_1\right)^d A_1 e^{-B_1\frac{3}{8}C_d\alpha\|x\|_1}.
\end{aligned}$$

The second inequality is due to the choice (10) for  $\eta$ , the third to the result of Antal and Pisztora (2). We have

$$\begin{aligned}
\|x - T\|_1 & \leq \|x - \|x\|_1 \hat{r}\|_1 + \|\|x\|_1 \hat{r} - T\|_1 \\
& \leq \left(\frac{C_d}{3} + \frac{9}{8}\right) \alpha\|x\|_1 \leq 2\alpha\|x\|_1 = \frac{\eta}{\rho}\|x\|_1,
\end{aligned}$$

and thus, similarly,

$$\begin{aligned}
& \mathbb{P}_p(T \leftrightarrow x, D(x, T) \geq \eta\|x\|_1) \\
& \leq \mathbb{P}_p(T \leftrightarrow x, D(x, T) \geq \rho\|x - T\|_1) \\
& \leq \sum_{\frac{3}{8}C_d\alpha\|x\|_1 \leq \|t - \|x\|_1 \hat{r}\|_1 \leq \frac{9}{8}\alpha\|x\|_1} \mathbb{P}_p(x \leftrightarrow t, D(x, t) \geq \rho\|x - t\|_1) \\
& \leq \sum_{\frac{3}{8}C_d\alpha\|x\|_1 \leq \|t - \|x\|_1 \hat{r}\|_1 \leq \frac{9}{8}\alpha\|x\|_1} A_1 e^{-B_1\|x - t\|_1} \\
& \leq \left(1 + 2 \times \frac{9}{8}\alpha\|x\|_1\right)^d A_1 e^{-B_1\frac{1}{24}C_d\alpha\|x\|_1},
\end{aligned}$$

where the last inequality follows from the estimate:

$$\|x - t\|_1 \geq \|\|x\|_1 \hat{r} - t\|_1 - \|x - \|x\|_1 \hat{r}\|_1 \geq \frac{C_d}{24}\alpha\|x\|_1.$$

Denote by  $\tilde{G}$  the event  $G$  seen not as an event in the macroscopic percolation, but as a set of configurations of the microscopic percolation. Note that the event

$$\tilde{G} \cap \{|C(S)| = +\infty\} \cap \{S \leftrightarrow 0, D(0, S) \leq \eta\|x\|_1\} \cap \{T \leftrightarrow x, D(x, T) \leq \eta\|x\|_1\}$$

is included in

$$\left\{0 \leftrightarrow x, D(0, x) \leq \left(1 + \frac{3\eta}{2\rho}\right) (1 + \eta)^2 \mu(\hat{x}) + 2\eta\right\} \|x\|_1 \Big\}.$$

Thus, using Equation (10) for  $\eta$ , and collecting all our previous estimates, we obtain:

$$\begin{aligned}
& \mathbb{P}_p(0 \leftrightarrow x, D(0, x) > \mu(\hat{x})(1 + \varepsilon)\|x\|_1) \\
& \leq \mathbb{P}_p\left(0 \leftrightarrow x, D(0, x) > \left(1 + \frac{3\eta}{2\rho}\right)(1 + \eta)^2 \mu(\hat{x}) + 2\eta\|x\|_1\right) \\
& \leq \mathbb{P}_p(\tilde{G}^c) + \mathbb{P}_p(S \leftrightarrow T, |C(S)| < +\infty) + \mathbb{P}_p(S \leftrightarrow 0, D(0, S) \geq \eta\|x\|_1) \\
& \quad + \mathbb{P}_p(T \leftrightarrow x, D(x, T) \geq \eta\|x\|_1) \\
& \leq 2Ae^{-\frac{B}{NM}\alpha\|x\|_1} + \left(1 + \frac{C\alpha}{NM}\|x\|_1\right)^{2d} Ae^{-\frac{B}{NM}(1-2\alpha)\|x\|_1} \\
& \quad + \left(1 + 2 \times \frac{9}{8}\alpha\|x\|_1\right)^d A_2 e^{-B_2(1-\frac{9}{4}\alpha)\|x\|_1} \\
& \quad + 2 \left(1 + 2 \times \frac{9}{8}\alpha\|x\|_1\right)^d A_1 e^{-B_1\frac{\alpha\|x\|_1}{2}},
\end{aligned}$$

which ends the proof of the Theorem.

#### 4. LOWER LARGE DEVIATIONS

The aim of this section is to prove the lower large deviations estimate for the chemical distance given by Theorem 1.6. First, we introduce some definitions linked to the convexity of the asymptotic shape  $\mathcal{B}_\mu(0, 1)$ . Then, in Lemma 4.2, we study the minimal number of open edges needed to reach a given hyperplane at distance  $r$  of the origin, and, in Lemma 4.3, the minimal number of open edges needed to cross a parallelepipedic box. Finally, we prove the lower large deviations results.

**4.1. Definitions.** For each  $y \in \mathbb{R}^d \setminus \{0\}$ , the ball  $\mathcal{B}_\mu(0, \mu(y))$  is a convex set, so one can find a vector  $n_y \in \mathcal{S}_2$  such that the linear form  $\phi_y$  defined by

$$\forall x \in \mathbb{R}^d \quad \phi_y(x) = \langle n_y, x \rangle$$

satisfies to  $\phi_y(y) \geq 0$  and to

$$(17) \quad \forall x \in \mathbb{R}^d \quad (\mu(x) \leq \mu(y)) \implies (\phi_y(x) \leq \phi_y(y)).$$

Note that the choice of  $n_y$  is not necessarily unique. Using the fact that the norms  $\mu$  and  $\|\cdot\|_2$  are homogeneous, it is possible to choose the vector  $n_y$  in such a way that for each  $y \in \mathbb{R}^d \setminus \{0\}$  and each  $r > 0$ , one has  $n_{ry} = n_y$ . In the following, we associate to every  $y \in \mathbb{R}^d \setminus \{0\}$  a unique  $n_y$  satisfying these properties. We also introduce the hyperplane  $H_y = \ker \phi_y = (n_y)^\perp$ : geometrically speaking,  $y + H_y$  is a support hyperplane of the convex set  $\mathcal{B}_\mu(0, \mu(y))$  at the point  $y$ .

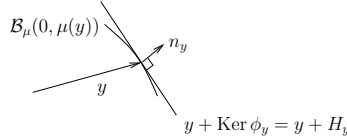


FIGURE 2. Support hyperplane of the convex set  $\mathcal{B}_\mu(0, \mu(y))$  at the point  $y$ : the hyperplane  $H_y$  may not be orthogonal to  $y$ .

For  $y \in \mathbb{R}^d \setminus \{0\}$  and  $r \in \mathbb{R}^+ \setminus \{0\}$ , note

$$S_y^0 = \{x \in \mathbb{R}^d : \phi_y(x) < \phi_y(y)\} \text{ and } S_y^\infty = \{x \in \mathbb{R}^d : \phi_y(x) > \phi_y(y)\}.$$

Then  $S_y^0$  – resp.  $S_y^\infty$  – is the open half-space, delimited by the support hyperplane  $y + H_y$  of  $\mathcal{B}_\mu(0, \mu(y))$  at the point  $y$ , containing – resp. not containing – the origin (see Figure 2).

The aim of the next lemma is to obtain, uniformly in  $y \in \mathcal{S}_2$ , a bound on the norm of points in the half-plane  $S_{ry}^\infty$ :

**Lemma 4.1.** *There exist two constants  $c_d, c'_d > 0$  such that for every  $y \in \mathcal{S}_2$ , we have*

- $\langle y, n_y \rangle \geq c_d$ .
- For every  $r > 0$ ,  $\inf\{\|z\|_2, z \in S_{ry}^\infty\} \geq c_d r$ .
- For every  $r > 0$ ,  $\inf\{\|z\|_1, z \in S_{ry}^\infty\} \geq c'_d r$ .

*Proof.* As  $\mu$  is a norm, it is equivalent to  $\|\cdot\|_2$ , so there exists  $K_1, K_2 \in (0, +\infty)$  such that

$$\forall x \in \mathbb{R}^d \quad K_1 \|x\|_2 \leq \mu(x) \leq K_2 \|x\|_2.$$

Note  $c_d = \frac{K_1}{K_2}$ . Choose  $y \in \mathcal{S}_2$  and set  $x = c_d n_y$ . We have  $\mu(x) \leq K_2 \|x\|_2 = K_2 c_d = K_1 \leq \mu(y)$ . It follows that  $\phi_y(x) \leq \phi_y(y)$ , or equivalently

$$c_d = \langle x, n_y \rangle \leq \langle y, n_y \rangle.$$

Now, let  $z \in S_{ry}^\infty$ : we have

$$\|z\|_2 \geq \langle z, n_{ry} \rangle = \phi_{ry}(z) > \phi_{ry}(ry) = \langle ry, n_{ry} \rangle = r \langle y, n_y \rangle \geq c_d r.$$

The last point is clear by the norm equivalence. □

**4.2. Passage-time from a point to a hyperplane.** Choose a direction  $y \in \mathcal{S}_2$ . Define then for  $r > 0$

$$b_y(r) = \inf\{D(0, z) : z \in S_{ry}^\infty\}.$$

This quantity is analogous to the usual passage time between the origin and a hyperplane orthogonal to the first-coordinate axis at distance  $r$  of the origin. In this special case,  $y = (1, 0, \dots, 0)$ , and thanks to the symmetries of the grid, the direction of the support hyperplane of  $\mathcal{B}_\mu(0, \mu(y))$  at the point  $y$  is orthogonal to  $y$ . But in a general direction  $y$ , the relevant hyperplane for the growth of the set  $B_t$  of wet vertices at time  $t$  in the direction  $y$  is  $H_y$ , which does not need to be orthogonal to  $y$  (See Figure 2). As in the paper by Cox and Durrett [4], we can study this quantity by using the asymptotic shape result given in Garet and Marchand [7]: for every  $p > p_c(d)$ ,

$$(18) \quad \lim_{t \rightarrow +\infty} \mathcal{D}\left(\frac{B_t}{t}, \mathcal{B}_\mu(0, 1)\right) = 0 \quad \overline{\mathbb{P}}_p \text{ a.s.}$$

and obtain the following lemma:

**Lemma 4.2.**  $\sup_{y \in \mathcal{S}_2} \left| \frac{b_y(r)}{r} - \mu(y) \right| \rightarrow 0 \quad \overline{\mathbb{P}}_p \text{ a.s.}$

*Proof.* As we work under  $\overline{\mathbb{P}}_p$ , we restrict ourselves to the event  $\{0 \leftrightarrow \infty\}$ .

Let  $\varepsilon > 0$ . By the asymptotic shape result (18), there  $\overline{\mathbb{P}}_p$  a.s. exists a random  $T$  such that

$$(19) \quad \forall t \geq T \quad \frac{B_t}{t} \subset (1 + \varepsilon)\mathcal{B}_\mu \quad \text{and} \quad \mathcal{B}_\mu \subset \frac{B_t}{t} + \mathcal{B}_\mu(0, \varepsilon).$$

For every  $r > 0$ , for every  $y \in \mathcal{S}_2$ , there exists a point  $z_r^y \in S_{ry}^\infty$  such that  $b_y(r) = D(0, z_r^y) \geq \|z_r^y\|_1$ . Note that, by the previous lemma, we have  $\|z_r^y\|_1 \geq \inf\{\|z\|_1 : z \in S_{ry}^\infty\} \geq c'_d r$ , and thus, as soon as  $c'_d r \geq T$ , we have

$$\forall y \in \mathcal{S}_2 \quad \frac{z_r^y}{b_y(r)} \in \frac{B_{b_y(r)}}{b_y(r)} \subset (1 + \varepsilon)\mathcal{B}_\mu.$$

This implies, by definition of  $H_y$  and by convexity of  $\mathcal{B}_\mu$ , that  $\frac{1}{b_y(r)} \frac{\langle z_r^y, n_y \rangle}{\langle y, n_y \rangle} y \in (1 + \varepsilon)\mathcal{B}_\mu$  and thus  $\overline{\mathbb{P}}_p$  a.s., for all  $r$  large enough,

$$\forall y \in \mathcal{S}_2 \quad \frac{r}{b_y(r)} \leq \frac{1 + \varepsilon}{\mu(y)}.$$

On the other hand, by definition of  $b_y(r)$ , we have  $S_{ry}^\infty \cap B_{b_y(r)-1} = \emptyset$ , or, in other words,  $B_{b_y(r)-1} \subset S_{ry}^0$ . By dilatation, we obtain

$$\frac{B_{b_y(r)-1}}{b_y(r)-1} \subset S_{\frac{ry}{b_y(r)-1}}^0,$$

and by definition of  $H_y$ , this leads to:

$$\frac{B_{b_y(r)-1}}{b_y(r)-1} + \mathcal{B}_\mu(0, \varepsilon) \subset S_{(\frac{r}{b_y(r)-1} + \varepsilon)y}^0.$$

Using (19), we obtain, as soon as  $c'_d r - 1 \geq T$ ,

$$\forall y \in \mathcal{S}_2 \quad \mathcal{B}_\mu \subset \frac{B_{b_y(r)-1}}{b_y(r)-1} + \mathcal{B}_\mu(0, \varepsilon),$$

and thus  $\mathcal{B}_\mu \cap S_{(\frac{r}{b_y(r)-1} + \varepsilon)y}^\infty = \emptyset$ , leading to

$$\mu\left(\left(\frac{r}{b_y(r)-1} + \varepsilon\right)y\right) = \left(\frac{r}{b_y(r)-1} + \varepsilon\right)\mu(y) > 1.$$

Finally, we get:  $\overline{\mathbb{P}}_p$  a.s., for all  $r$  large enough,

$$\forall y \in \mathcal{S}_2 \quad \frac{r}{b_y(r)-1} \geq \frac{1}{\mu(y)} - \varepsilon.$$

which ends the proof.  $\square$

**4.3. Crossings of parallelepipedic boxes.** We want first to find  $d$  directions  $(y_1 = y, y_2, \dots, y_d)$  with  $y_i \in \mathcal{S}_2$  such that the asymptotic time constants are the same along all these directions and such that the directions of the support hyperplanes of  $\mathcal{B}_\mu$  in these directions are linearly independent.

For  $y \in \mathcal{S}_2$ , consider the vector  $n_y \in \mathcal{S}_2$  orthogonal to a support hyperplane of  $\mathcal{B}_\mu$  in the direction  $y$  as defined previously, and the isometries  $(g_{n_y,2}, \dots, g_{n_y,d}) \in (\mathcal{O}(\mathbb{Z}^d))^{d-1}$  given by Equation (6) in Lemma 2.2 and set

$$\begin{aligned} (n_1, n_2, \dots, n_d) &= (n_y, g_{n_y,2}(n_y), \dots, g_{n_y,d}(n_y)), \\ (y_1, y_2, \dots, y_d) &= (y, g_{n_y,2}(y), \dots, g_{n_y,d}(y)). \end{aligned}$$

For  $k \in \mathbb{Z}^d$ ,  $\alpha \in (\mathbb{R}_+^*)^d$ , we define boxes adapted to study the travel times in the directions  $y_1, y_2, \dots, y_d$ ; they are analogous to the rectangular boxes introduced to estimate the travel time in the first-coordinate axis in classical first-passage percolation.

$$\begin{aligned} T_{(y)}(k, \alpha) &= \left\{ v \in \mathbb{Z}^d : \forall m \in \{1, \dots, d\} \ k_m \leq \frac{\langle v, n_m \rangle}{\langle y_m, n_m \rangle} < k_m + \alpha_m \right\}, \\ \partial_-^m T_{(y)}(k, \alpha) &= \left\{ \begin{array}{l} v \in \mathbb{Z}^d \setminus T_{(y)}(k, \alpha) : \\ \bullet \forall j \in \{1, \dots, d\} \setminus \{m\} \quad k_j \leq \frac{\langle v, n_j \rangle}{\langle y_j, n_j \rangle} < k_j + \alpha_j \\ \bullet \frac{\langle v, n_m \rangle}{\langle y_m, n_m \rangle} < k_m \\ \bullet \exists w \in T_{(y)}(k, \alpha) \quad \|w - v\|_1 = 1 \end{array} \right\}, \\ \partial_+^m T_{(y)}(k, \alpha) &= \left\{ \begin{array}{l} v \in \mathbb{Z}^d \setminus T_{(y)}(k, \alpha) : \\ \bullet \forall j \in \{1, \dots, d\} \setminus \{m\} \quad k_j \leq \frac{\langle v, n_j \rangle}{\langle y_j, n_j \rangle} < k_j + \alpha_j \\ \bullet \frac{\langle v, n_m \rangle}{\langle y_m, n_m \rangle} \geq k_m + \alpha_m \\ \bullet \exists w \in T_{(y)}(k, \alpha) \quad \|w - v\|_1 = 1 \end{array} \right\}. \end{aligned}$$

We can now define, using the same terminology as in first-passage percolation, the crossing time of the box  $T_{(y)}(k, \alpha)$  in the  $m$ -th direction:

$$t_{(y)}^m(k, \alpha) = \inf \left\{ |\gamma|, \text{ where } \gamma \text{ is an open path from a point in } \partial_-^m T_{(y)}(k, \alpha) \text{ to a point in } \partial_+^m T_{(y)}(k, \alpha) \text{ included but its ends in } T_{(y)}(k, \alpha) \right\}.$$

The next lemma gives a convergence in probability, uniformly in the direction  $y$ , of these minimal crossing times of boxes:

**Lemma 4.3.** *Let  $\alpha = (\alpha_1, \dots, \alpha_d) \in (0, +\infty)^d$ . Then for every  $\varepsilon > 0$  we have*

$$\forall m \in \{1, \dots, d\} \quad \lim_{r \rightarrow +\infty} \sup_{k \in \mathbb{Z}^d} \sup_{y \in \mathcal{S}_2} \mathbb{P}_p(t_{(y)}^m(k, r\alpha) \leq (\mu(y) - \varepsilon)r\alpha_m) = 0.$$

*Proof.* Fix  $\alpha = (\alpha_1, \dots, \alpha_d) \in (0, +\infty)^d$  and  $\varepsilon > 0$ . Choose

$$(20) \quad \eta = \frac{C_d \varepsilon}{6\rho d^{5/2}} \left( \min_{1 \leq m \leq d} \alpha_m \right) > 0,$$

where  $C_d$  is given in Lemma 2.2 and  $\rho$  is the constant introduced by Antal and Pisztora – see Equation (2); set  $\tau = \eta r$ .

Choose  $k \in \mathbb{Z}^d$  and  $y \in \mathcal{S}_2$ .

We introduce the following partition of  $\mathbb{Z}^d$  into boxes of size  $\tau$ , which tends to infinity when  $r$  goes to infinity, but will still be small when compared to  $r$ : for every  $\bar{x} \in \mathbb{Z}^d$ , and every  $A \subset \mathbb{Z}^d$

$$\begin{aligned} R_{(y)}(\bar{x}) &= \left\{ v \in \mathbb{Z}^d : \forall m \in \{1, \dots, d\} \quad \bar{x}_m \tau \leq \frac{\langle v, n_m \rangle}{\langle y_m, n_m \rangle} < (\bar{x}_m + 1)\tau \right\}, \\ \mathcal{R}_{(y)}(A) &= \{\bar{x} \in \mathbb{Z}^d : R_{(y)}(\bar{x}) \cap A \neq \emptyset\}. \end{aligned}$$

Then  $\mathcal{R}_{(y)}(\partial_-^m T_{(y)}(k, r\alpha))$ , which plays the role of an approximation at a larger scale of  $\partial_-^m T_{(y)}(k, r\alpha)$ , is  $*$ -connected and a simple estimation leads to

$$|\mathcal{R}_{(y)}(\partial_-^m T_{(y)}(k, r\alpha))| \leq \left(2 + \frac{1}{\eta r}\right) \prod_{\substack{1 \leq j \leq d \\ j \neq m}} \left(2 + \frac{\alpha_j}{\eta}\right).$$

The partition into boxes with size  $\tau$  was introduced to obtain this estimate: while  $|\partial_-^m T_{(y)}(k, r\alpha)|$  is of order  $r^{d-1}$ , the cardinal  $|\mathcal{R}_{(y)}(\partial_-^m T_{(y)}(k, r\alpha))|$  of its approximation with large boxes remains bounded when  $r$  goes to infinity. If  $v \in \partial_-^m T_{(y)}(k, r\alpha)$ , then there exists a unique  $\bar{x}_v \in \mathcal{R}_{(y)}(\partial_-^m T_{(y)}(k, r\alpha))$  such that  $v \in R_{(y)}(\bar{x}_v)$ . We define

$$\mathcal{W}(v) = \{\bar{x} \in \mathcal{R}_{(y)}(\partial_-^m T_{(y)}(k, r\alpha)) : \|\bar{x} - \bar{x}_v\|_\infty = 2\} \neq \emptyset.$$

If  $R_{(y)}(\bar{x}) \cap C_\infty \neq \emptyset$ , then define  $c(\bar{x})$  as the point in  $R_{(y)}(\bar{x}) \cap C_\infty$  which is the closest to  $\tau(x + (1/2, \dots, 1/2))$  (use the lexicographic order if necessary). Remember that the box  $R_{(y)}(\bar{x})$  has size  $\tau$ , which tends to infinity with  $r$ , and thus as  $r$  goes to infinity, we expect the probability that  $R_{(y)}(\bar{x}) \cap C_\infty \neq \emptyset$  to go to 1.

Now, in the following inequality, we approximate the event  $\{t_{(y)}^m(k, r\alpha) \leq (\mu(y) - \varepsilon)r\alpha_m\}$  by the event in (21), and the three last terms correspond to the difference between them, and are expected to be small.

$$\begin{aligned} & \mathbb{P}_p(t_{(y)}^m(k, r\alpha) \leq (\mu(y) - \varepsilon)r\alpha_m) \\ (21) \quad & \leq \mathbb{P}_p \left( \begin{array}{l} \bullet \forall \bar{x} \in \mathcal{R}_{(y)}(\partial_-^m T_{(y)}(k, r\alpha)) \quad R_{(y)}(\bar{x}) \cap C_\infty \neq \emptyset \\ \bullet \forall v \in \partial_-^m T_{(y)}(k, r\alpha) \quad (v \leftrightarrow \partial_+^m T_{(y)}(k, r\alpha) \Rightarrow v \leftrightarrow \infty) \\ \bullet \exists v \in \partial_-^m T_{(y)}(k, r\alpha) \text{ such that} \\ \quad \exists w \in \partial_+^m T_{(y)}(k, r\alpha) \quad D(v, w) \leq (\mu(y) - \varepsilon)r\alpha_m \\ \quad \exists \bar{x} \in \mathcal{W}(v) \quad D(v, c(\bar{x})) < \rho \|v - c(\bar{x})\|_1 \end{array} \right) \\ (22) \quad & + \mathbb{P}_p(\exists \bar{x} \in \mathcal{R}_{(y)}(\partial_-^m T_{(y)}(k, r\alpha)) \quad R_{(y)}(\bar{x}) \cap C_\infty = \emptyset) \\ (23) \quad & + \mathbb{P}_p(\exists v \in \partial_-^m T_{(y)}(k, r\alpha) \quad v \leftrightarrow \partial_+^m T_{(y)}(k, r\alpha), \quad v \not\leftrightarrow \infty) \\ (24) \quad & + \mathbb{P}_p \left( \begin{array}{l} \bullet \forall \bar{x} \in \mathcal{R}_{(y)}(\partial_-^m T_{(y)}(k, r\alpha)) \quad R_{(y)}(\bar{x}) \cap C_\infty \neq \emptyset \\ \bullet \exists v \in \partial_-^m T_{(y)}(k, r\alpha) \quad \forall \bar{x} \in \mathcal{W}(v) \\ \quad D(v, c(\bar{x})) \geq \rho \|v - c(\bar{x})\|_1 \end{array} \right). \end{aligned}$$

Let us estimate the three error terms first.

Estimate for (22). Let  $\bar{x} \in \mathbb{Z}^d$ , and let us prove that  $R_{(y)}(\bar{x})$  contains a ball for the norm  $\|\cdot\|_2$  with radius proportional to  $\tau$ . Let us introduce first the point  $a_{\bar{x}} \in \mathbb{R}^d$ , which represents the center of  $R_{(y)}(\bar{x})$ , such that

$$\forall m \in \{1, \dots, d\} \quad \frac{\langle a_{\bar{x}}, n_m \rangle}{\langle y_m, n_m \rangle} = \left( \bar{x}_m + \frac{1}{2} \right) \tau.$$

Then we have, with  $c_d$  given by Lemma 4.1,

$$\begin{aligned} R_{(y)}(\bar{x}) &= \left\{ v \in \mathbb{Z}^d : \quad \forall m \in \{1, \dots, d\} \quad -\frac{\tau}{2} \leq \frac{\langle \bar{x} - a_{\bar{x}}, n_m \rangle}{\langle y_m, n_m \rangle} < \frac{\tau}{2} \right\} \\ &\supset \left\{ v \in \mathbb{Z}^d : \quad \|\bar{x} - a_{\bar{x}}\|_2 \leq \frac{\tau c_d}{2} \right\}. \end{aligned}$$

Thus the box  $R_{(y)}(\bar{x})$  contains the ball  $\mathcal{B}_2(a_{\bar{x}}, \tau c_d/2)$ ; this radius does not depend on the direction  $y$ .

Using then Equation (4), we get:

$$\begin{aligned} (22) \quad & \leq |\mathcal{R}_{(y)}(\partial_-^m T_{(y)}(k, r\alpha))| \sup_{z \in \mathbb{Z}^d} \mathbb{P}_p(\mathcal{B}_2(z, \tau c_d/2) \cap C_\infty = \emptyset) \\ & \leq \left( 2 + \frac{1}{\eta r} \right) \prod_{\substack{1 \leq j \leq d \\ j \neq m}} \left( 2 + \frac{\alpha_j}{\eta} \right) A_3 \exp \left( -\frac{B_3 c_d \eta r}{2\sqrt{d}} \right), \end{aligned}$$

which tends to 0 when  $r$  goes to infinity, uniformly in the direction  $y \in \mathcal{S}_2$ .

Estimate for (23). Note that if  $v \in \partial_-^m T_{(y)}(k, r\alpha)$  and  $w \in \partial_+^m T_{(y)}(k, r\alpha)$ , then, by definition of the box, we have:

$$\left| \frac{\langle w - v, n_m \rangle}{\langle y_m, n_m \rangle} \right| \geq r\alpha_m.$$

By Lemma 4.1, we have:

$$\sqrt{d}\|w - v\|_1 \geq \|w - v\|_2 \geq |\langle w - v, n_m \rangle| \geq c_d r\alpha_m,$$

and thus, using translation invariance and Equation (3):

$$\begin{aligned} (23) &\leq |\partial_-^m T_{(y)}(k, r\alpha)| \mathbb{P}_p \left( |C(0)| \geq \frac{c_d}{\sqrt{d}} r\alpha_m, 0 \not\leftrightarrow \infty \right) \\ &\leq K_\alpha r^{d-1} A_2 \exp \left( -B_2 \frac{c_d}{\sqrt{d}} r\alpha_m \right), \end{aligned}$$

which tends to 0 when  $r$  goes to infinity, uniformly in the direction  $y \in \mathcal{S}_2$ . ( $K_\alpha$  is a constant depending only on the dimension and  $\alpha$ ).

Estimate for (24). Let  $v \in \partial_-^m T_{(y)}(k, r\alpha)$  and  $\bar{x} \in \mathcal{W}(v)$  such that  $R_{(y)}(\bar{x}) \cap C_\infty \neq \emptyset$ . Then by construction,

$$\max_{1 \leq m \leq d} \left| \frac{\langle v - c(\bar{x}), n_m \rangle}{\langle y_m, n_m \rangle} \right| \geq \tau.$$

But then, using Lemma 4.1, we obtain

$$\begin{aligned} \|v - c(\bar{x})\|_1 &\geq \frac{1}{\sqrt{d}} \|v - c(\bar{x})\|_2 \geq \frac{1}{\sqrt{d}} \max_{1 \leq m \leq d} |\langle v - c(\bar{x}), n_m \rangle| \\ &\geq \frac{c_d}{\sqrt{d}} \max_{1 \leq m \leq d} \left| \frac{\langle v - c(\bar{x}), n_m \rangle}{\langle y_m, n_m \rangle} \right| \geq \frac{c_d \tau}{\sqrt{d}}. \end{aligned}$$

Using Antal and Pisztora's result (2), one has the following bound:

$$(24) \leq |\partial_-^m T_{(y)}(k, r\alpha)| \times 5^{d-1} 2d A_1 \exp \left( -B_1 \frac{c_d \eta r}{\sqrt{d}} \right),$$

which tends to 0 when  $r$  goes to infinity, uniformly in the direction  $y \in \mathcal{S}_2$ .

Estimate for (21). Let  $v \in \partial_-^m T_{(y)}(k, r\alpha)$  and  $\bar{x} \in \mathcal{W}(v)$  such that  $R_{(y)}(\bar{x}) \cap C_\infty \neq \emptyset$ . Then by construction,

$$\max_{1 \leq m \leq d} \left| \frac{\langle v - c(\bar{x}), n_m \rangle}{\langle y_m, n_m \rangle} \right| \leq 3\tau.$$

But then, using equation (6) in Lemma 2.2, we have

$$\begin{aligned} \|v - c(\bar{x})\|_1 &\leq \sqrt{d} \|v - c(\bar{x})\|_2 \leq \frac{d^2}{C_d} \|v - c(\bar{x})\|_{(n_i), 2} \\ &\leq \frac{d^{5/2}}{C_d} \max_{1 \leq m \leq d} |\langle v - c(\bar{x}), n_m \rangle| \leq \frac{d^{5/2}}{C_d} \max_{1 \leq m \leq d} \left| \frac{\langle v - c(\bar{x}), n_m \rangle}{\langle y_m, n_m \rangle} \right| \\ &\leq \frac{3d^{5/2}\tau}{C_d}. \end{aligned}$$



We obtain:

$$(21) \leq \mathbb{P}_p \left( \begin{array}{l} \exists \bar{x} \in \mathcal{R}_{(y)}(\partial^m T_{(y)}(k, r\alpha)) \text{ such that} \\ \bullet R_{(y)}(\bar{x}) \cap C_\infty \neq \emptyset, \\ \bullet \exists w \in \partial_+^m T_{(y)}(k, r\alpha) \\ D(c(\bar{x}), w) < \frac{3\rho d^{5/2}\eta r}{C_d} + (\mu(y) - \varepsilon)r\alpha_m \end{array} \right)$$

By the choice (20) we made for  $\eta$ , we obtain that

$$\begin{aligned} (21) &\leq |\mathcal{R}_{(y)}(\partial_+^m T_{(y)}(k, r\alpha))| \\ &\times \sup_{\bar{x} \in \mathbb{Z}^d} \mathbb{P}_p \left( \begin{array}{l} \bullet R_{(y)}(\bar{x}) \cap C_\infty \neq \emptyset, \\ \bullet \exists y \in \partial_+^m T_{(y)}(k, r\alpha), D(c(\bar{x}), y) \leq (\mu(y) - \frac{\varepsilon}{2})r\alpha_m \end{array} \right) \\ &\leq \left(2 + \frac{1}{\eta r}\right) \prod_{\substack{1 \leq j \leq d \\ j \neq m}} \left(2 + \frac{\alpha_j}{\eta}\right) \mathbb{P}_p \left( b_{y_m}(\alpha_m r) \leq \left(\mu(y) - \frac{\varepsilon}{2}\right) \alpha_m r \right), \end{aligned}$$

which tends to 0 when  $r$  goes to  $\infty$  by Lemma 4.2. Note that this convergence is uniform in  $k \in \mathbb{Z}^d$  and  $y \in \mathcal{S}_2$ .  $\square$

**4.4. Lower large deviations: proof of Theorem 1.6.** We essentially follow the main lines of the proof in the classical case by Grimmett and Kesten [9]: A “too short” path should cross “many” boxes in a “too short” time, and by the previous result and a counting argument, this probability can be made exponentially small. The two main difficulties are to deal with geometric problems due to the fact that we want large deviations not only along the coordinate axes, but in all directions and the uniformity we require in this direction.

Step 1: Definition of boxes adapted to direction  $y$ .

Choose  $M$  and  $N$  large enough, that will be fixed later.

For  $\bar{k} = (\bar{k}_1, \dots, \bar{k}_d) \in \mathbb{Z}^d$ , we define:

$$\begin{aligned} S_{(y)}(\bar{k}) &= \left\{ v \in \mathbb{Z}^d : \forall m \in \{1, \dots, d\} \ N\bar{k}_m \leq \frac{\langle v, n_m \rangle}{\langle y_m, n_m \rangle} < N(\bar{k}_m + 1) \right\}, \\ T_{(y)}(\bar{k}) &= \left\{ \begin{array}{l} v \in \mathbb{Z}^d : \forall m \in \{1, \dots, d\} \\ N\bar{k}_m - M \leq \frac{\langle v, n_m \rangle}{\langle y_m, n_m \rangle} < N(\bar{k}_m + 1) + M \end{array} \right\}. \end{aligned}$$

The  $S_{(y)}(\bar{k})$ 's are large “twisted square” boxes, adapted to the studied direction of progression  $y$  and its conjugates  $(y_2, \dots, y_d)$ , that induce a partition of  $\mathbb{Z}^d$ , and the  $T_{(y)}(\bar{k})$ 's are still much larger boxes centered in the  $S_{(y)}(\bar{k})$ 's.

In  $T_{(y)}(\bar{k})$ , the small box  $S_{(y)}(\bar{k})$  is surrounded by  $2d$  boxes of the type ( $1 \leq m \leq d$ ):

$$\begin{aligned} B_{(y),m}^+(\bar{k}) &= \left\{ \begin{array}{l} v \in \mathbb{Z}^d : \\ \forall j \neq m \quad N\bar{k}_j - M \leq \frac{\langle v, n_j \rangle}{\langle y_j, n_j \rangle} < N(\bar{k}_j + 1) + M \\ N(\bar{k}_m + 1) \leq \frac{\langle v, n_m \rangle}{\langle y_m, n_m \rangle} < N(\bar{k}_m + 1) + M \end{array} \right\} \\ B_{(y),m}^-(\bar{k}) &= \left\{ \begin{array}{l} v \in \mathbb{Z}^d : \\ \forall j \neq m \quad N\bar{k}_j - M \leq \frac{\langle v, n_j \rangle}{\langle y_j, n_j \rangle} < N(\bar{k}_j + 1) + M \\ N\bar{k}_m - M \leq \frac{\langle v, n_m \rangle}{\langle y_m, n_m \rangle} < N\bar{k}_m \end{array} \right\}. \end{aligned}$$

We define the inside border and the outside border of the box  $B_{(y),m}^-(\bar{k})$ , relatively to  $T_{(y)}(\bar{k})$ :

$$\begin{aligned}\partial_{in} B_{(y),m}^-(\bar{k}) &= \{v \in T(\bar{k}) \setminus B_{(y),m}^-(\bar{k}) : \exists w \in B_{(y),m}^-(\bar{k}) \quad \|v - w\|_1 = 1\}, \\ \partial_{out} B_{(y),m}^-(\bar{k}) &= \left\{ v \in T_{(y)}(\bar{k}_1, \dots, \bar{k}_{m-1}, \bar{k}_m - 1, \bar{k}_{m+1}, \dots, \bar{k}_d) \setminus T_{(y)}(\bar{k}) : \right. \\ &\quad \left. \exists w \in B_{(y),m}^-(\bar{k}) \quad \|v - w\|_1 = 1 \right\},\end{aligned}$$

and the borders of the other boxes can be defined in the obvious analogous manner.

The point is that a path, visiting  $S_{(y)}(\bar{k})$  and exiting from  $T_{(y)}(\bar{k})$ , has to cross one of these  $2d$  boxes surrounding  $S_{(y)}(\bar{k})$  in  $T_{(y)}(\bar{k})$  from a point in its inside border to a point in its outside border, say  $B_{(y),m}^+(\bar{k})$  for instance. And, roughly speaking, the fastest way to cross it is to follow the  $y_m$  direction, and this should take an amount of steps of order  $\mu(y_m)M = \mu(y)M$  if  $M$  is large. We can easily estimate the size of borders of boxes:

**Lemma 4.4.** *There exist a strictly positive constant  $K_d$  depending only on the dimension  $d$  and not on  $y \in \mathcal{S}_2$  such that for every  $k \in \mathbb{Z}^d$ , for every  $m \in \{1, \dots, d\}$ ,*

$$\begin{aligned}\frac{1}{K_d}(N + 2M)^{d-1} &\leq |\partial_{in} B_{(y),m}^+(k)| \leq K_d(N + 2M)^{d-1}, \\ \frac{1}{K_d}(N + 2M)^{d-1} &\leq |\partial_{out} B_{(y),m}^+(k)| \leq K_d(N + 2M)^{d-1}.\end{aligned}$$

The same is also true for the borders of  $B_{(y),m}^-(k)$ 's.

Step 2: Construction of crossings.

The construction is exactly the same as the one in Grimmett and Kesten [9]. We thus only give the way to adapt it.

Let  $r > 0$  large enough and let  $\gamma = (v(0), \dots, v(\nu))$  be a path from 0 to a point in  $S_{ry}^\infty$ . We associate to  $\gamma$  the following two sequences. First set  $k(0) = 0$  and  $a(0) = 0$ . Let then  $v(a(1))$  be the first vertex along  $\gamma$  to be outside  $T_{(y)}(k(0))$ , and let  $k(1)$  be the coordinates of the small box of type  $S$  containing  $v(a(1))$ :  $v(a(1)) \in S_{(y)}(k(1))$ , and build the two sequences recursively, to obtain  $(a(1), \dots, a(\tau(\gamma)))$  and  $(k(0), \dots, k(\tau(\gamma)))$  such that:

- (1)  $0 = a(0) < a(1) < \dots < a(\tau(\gamma)) \leq \nu$ ,
- (2)  $v(a(i)) \in S_{(y)}(k(i))$ ,
- (3)  $a(i+1)$  is the smallest integer  $a$  larger than  $a(i)$  such that  $v(a) \notin T_{(y)}(k(i))$ .

The final terms satisfy:

$$\forall a(\tau(\gamma)) \leq j \leq \nu \quad v(j) \in T_{(y)}(k(\tau(\gamma))).$$

Note that the portion  $\gamma(i)$  of  $\gamma$  between  $v(a(i-1))$  and  $v(a(i))$  has to cross one of the  $2d$  boxes of type  $B_{(y),m}(k(i-1))$  surrounding  $S_{(y)}(k(i-1))$  in  $T_{(y)}(k(i-1))$  from a point in its inside border to a point in its outside border. We are interested in these crossings and the amount of steps they use.

But first, by the process of loop-removal described in Grimmett and Kesten [9], remove the double points from  $\Gamma = (k(0), \dots, k(\tau(\gamma)))$ , and obtain

$$\tilde{\Gamma} = (l(0), \dots, l(\sigma(\gamma))),$$

where  $l(a) = k(j_a)$  and  $0 < j_0 < \dots < j_{\sigma(\gamma)} \leq \tau(\gamma)$ . Note that although we can have  $j_{\sigma(\gamma)} < \tau(\gamma)$ , it is always true that  $k(j_{\sigma(\gamma)}) = k(\tau(\gamma))$ . By construction,

$$\forall m \in \{1, \dots, d\} \quad \forall j \in \{0, \dots, \tau(\gamma) - 1\} \quad \left| \frac{\langle n_{y_m}, k(j+1) - k(j) \rangle}{\langle n_{y_m}, y_m \rangle} \right| \leq \frac{M}{N} + 1,$$

and this property is preserved by the loop-removal process in the following sense:

$$\forall m \in \{1, \dots, d\} \quad \forall j \in \{0, \dots, \sigma(\gamma) - 1\} \quad \left| \frac{\langle n_{y_m}, l(j+1) - l(j) \rangle}{\langle n_{y_m}, y_m \rangle} \right| \leq \frac{M}{N} + 1.$$

Step 3: Coloring of crossings.

Consider the portion  $\gamma(i)$  of  $\gamma$  between  $v(a(i-1))$  and  $v(a(i))$ , and define:

$$\mathcal{L}(i) = \max_{m \in \{1, \dots, d\}} \left| \frac{\langle n_{y_m}, v(a(i)) - v(a(i-1)) \rangle}{\langle n_{y_m}, y_m \rangle} \right|.$$

By construction,  $M \leq \mathcal{L}(i) \leq M + N$  for  $1 \leq i \leq \tau(i)$ . Now, for  $i \in \{1, \dots, \sigma(\gamma)\}$ , consider the portion  $\gamma(j_i)$  between the two boxes  $S_{(y)}(k(j_i-1))$  and  $S_{(y)}(k(j_i))$  and give to the vector  $l(i) = k(j_i)$  the color white if

$$|\gamma(j_i)| \text{ is open and } |\gamma(j_i)| \leq (\mu(y) - 2\varepsilon)\mathcal{L}(j_i),$$

and in black otherwise. Denote by  $w(\gamma)$  the number of white points in the sequence  $(l(1), \dots, l(\sigma(\gamma)))$  of crossings associated to  $\gamma$ . The next lemma corresponds to Lemma 3.5 in the paper by Grimmett and Kesten [9]:

**Lemma 4.5.** *Suppose that  $\varepsilon$ ,  $r$ ,  $M$  and  $N$  satisfy the following:*

- (1)  $\varepsilon$  is small:  $0 < \varepsilon < \min\{\mu(z) : z \in \mathcal{S}_2\}$ ,
- (2)  $M/N$  is large:  $\forall z \in \mathcal{S}_2 \quad M(\mu(z) - 3\varepsilon) \geq (M + N)(\mu(z) - 4\varepsilon)$ ,
- (3)  $r$  is large:  $\forall z \in \mathcal{S}_2 \quad r\varepsilon \geq (M + 2N)(\mu(z) - 4\varepsilon)$ .

*Then for any  $y \in \mathcal{S}_2$ , an open path  $\gamma$ , travelling from 0 to  $S_{ry}^\infty$  and whose length  $|\gamma|$  is less or equal to  $r(\mu(y) - 5\varepsilon)$ , satisfies*

$$w(\gamma) \geq \frac{\varepsilon\sigma}{2\mu(e_1)} \text{ and } \sigma(\gamma) \geq \frac{r}{M + N} - 1.$$

*Proof.* The proof for a fixed  $y \in \mathcal{S}_2$  is exactly as in Grimmett and Kesten [9]. The only difference is the uniformity in  $y \in \mathcal{S}_2$ , that can be obtained because  $\mu$  is a norm and is bounded away from 0 and bounded away from infinity on the compact set  $\mathcal{S}_2$ .  $\square$

Note that the event  $\{l(i) \text{ is white}\}$  is contained in the event

$$\mathcal{E}_{(y),i} = \left\{ \begin{array}{l} \text{a vertex in } S_{(y)}(k(j_i)) \text{ is joined to a vertex} \\ \text{outside } T_{(y)}(k(j_i)) \text{ by a path using} \\ \text{less than } (M + N)(\mu(y) - 2\varepsilon) \text{ steps} \end{array} \right\}.$$

To conclude the proof by a counting argument, as these event are only locally dependent, it only remains to prove the following lemma:

**Lemma 4.6.** *Let  $0 < \varepsilon < \mu_{\inf} = \min\{\mu(z) : z \in \mathcal{S}_1\}$ . Then*

$$p(M, N, \varepsilon) = \sup_{\substack{k \in \mathbb{Z}^d \\ y \in \mathcal{S}_2}} \mathbb{P}_p \left( \begin{array}{ll} \exists v \in S_{(y)}(k) & \exists w \notin T_{(y)}(k), \\ v \leftrightarrow w, D(v, w) \leq (M + N)(\mu(y) - 2\varepsilon) \end{array} \right)$$

*goes to 0 when  $M$  and  $N$  go to infinity, provided that  $M \geq \frac{2N}{\varepsilon} \sup_{x \in \mathcal{S}_2} \mu(x)$ .*

*Proof.* Note that  $M \geq \frac{2N}{\varepsilon} \sup_{x \in \mathcal{S}_2} \mu(x)$  implies  $(M + N)(\mu(y) - 2\varepsilon) \leq M(\mu(y) - \varepsilon)$  and use Lemma 4.3 on the time needed to cross a box:

$$p(M, N, \varepsilon) \leq 2d \sup_{k \in \mathbb{Z}^d} \sup_{y \in \mathcal{S}_2} \sup_{1 \leq m \leq d} \mathbb{P}_p(t_{(y)}^m(k, \alpha r) \leq (\mu(y) - \varepsilon)\alpha_m r).$$

□

## 5. LARGE DEVIATIONS FOR THE SET OF WET VERTICES: PROOF OF THEOREM 1.7

We can now prove Theorem 1.7, which follows quite naturally from the uniform estimates in Theorem 1.3 and Theorem 1.6.

Let  $p > p_c(d)$  and  $\varepsilon > 0$ . Let us note first that, for every  $t > 0$ ,

$$\begin{aligned} \overline{\mathbb{P}}_p \left( \mathcal{D} \left( \frac{B_t}{t}, \mathcal{B}_\mu(0, 1) \right) \geq \varepsilon \right) &\leq \overline{\mathbb{P}}_p \left( \frac{B_t}{t} \not\subset \mathcal{B}_\mu(0, 1 + \varepsilon) \right) \\ &\quad + \overline{\mathbb{P}}_p \left( \mathcal{B}_\mu(0, 1) \not\subset \frac{B_t}{t} + \mathcal{B}_\mu(0, \varepsilon) \right). \end{aligned}$$

Let us now estimate each term separately.

Step 1. In the first term, we estimate the probability that the random set  $B_t$  grows too fast, which corresponds to the existence of a point  $x$  whose distance  $D(0, x)$  from the origin is shorter than expected. Thus

$$\begin{aligned} &\overline{\mathbb{P}}_p \left( \frac{B_t}{t} \not\subset \mathcal{B}_\mu(0, 1 + \varepsilon) \right) \\ &= \overline{\mathbb{P}}_p \left( \exists x \in \mathbb{Z}^d \quad D(0, x) \leq t, \mu \left( \frac{x}{t} \right) > 1 + \varepsilon \right) \\ &= \overline{\mathbb{P}}_p \left( \exists x \in \mathbb{Z}^d \quad D(0, x) < \frac{1}{1 + \varepsilon} \mu(x), \mu(x) > (1 + \varepsilon)t \right) \\ &\leq \sum_{k=\frac{(1+\varepsilon)t}{\mu(e_1)}}^{\infty} \sum_{\|x\|_1=k} \overline{\mathbb{P}}_p \left( D(0, x) < \frac{1}{1 + \varepsilon} \mu(x) \right) \\ &\leq \sum_{k=\frac{(1+\varepsilon)t}{\mu(e_1)}}^{\infty} \sum_{\|x\|_1=k} A e^{-B\|x\|_1} \quad \text{with Theorem 1.6} \\ &\leq \sum_{k=\frac{(1+\varepsilon)t}{\mu(e_1)}}^{\infty} C k^{d-1} A e^{-Bk} \leq A' t^d e^{-Bt}. \end{aligned}$$

Step 2. In the second term, we estimate two types of discrepancies between  $B_t/t$  and  $\overline{\mathcal{B}}_\mu$ : on the one hand the probability that the random set  $B_t$  grows too slowly, which corresponds to the existence of a point  $x$  whose distance  $D(0, x)$  from the origin is larger than expected and on the other hand, the probability that the random set  $B_t$  contains abnormally large holes. By definition,

$$\begin{aligned} &\overline{\mathbb{P}}_p \left( \mathcal{B}_\mu(0, 1) \not\subset \frac{B_t}{t} + \mathcal{B}_\mu(0, \varepsilon) \right) \\ &= \overline{\mathbb{P}}_p \left( \exists x \in \mathbb{R}^d \quad \mu(x) \leq t, \mathcal{B}_\mu(x, \varepsilon t) \cap B_t = \emptyset \right). \end{aligned}$$

Note that, as soon as  $t$  is large enough, one has

$$\forall x \in \mathcal{B}_\mu(0, t) \quad \exists y \in \mathbb{Z}^d \text{ such that } \frac{3\varepsilon}{4}t \leq \mu(y) \leq \left(1 - \frac{3\varepsilon}{4}\right)t \text{ and } \mathcal{B}_\mu\left(y, \frac{\varepsilon t}{8}\right) \subset \mathcal{B}_\mu(x, \varepsilon t),$$

and so we obtain

$$\begin{aligned} & \overline{\mathbb{P}}_p\left(\mathcal{B}_\mu(0, 1) \not\subset \frac{B_t}{t} + \mathcal{B}_\mu(0, \varepsilon)\right) \\ & \leq \overline{\mathbb{P}}_p\left(\exists y \in \mathbb{Z}^d \quad \frac{3\varepsilon}{4}t \leq \mu(y) \leq \left(1 - \frac{3\varepsilon}{4}\right)t, \mathcal{B}_\mu\left(y, \frac{\varepsilon t}{8}\right) \cap B_t = \emptyset\right) \\ & \leq \sum_{\frac{3\varepsilon}{4}t \leq \mu(y) \leq \left(1 - \frac{3\varepsilon}{4}\right)t} \overline{\mathbb{P}}_p\left(\mathcal{B}_\mu\left(y, \frac{\varepsilon t}{8}\right) \cap B_t = \emptyset\right). \end{aligned}$$

If the event  $\mathcal{B}_\mu\left(y, \frac{\varepsilon t}{8}\right) \cap B_t = \emptyset$  occurs, then either  $\mathcal{B}_\mu\left(y, \frac{\varepsilon t}{8}\right)$  contains no point of the infinite cluster, or it contains a point of the infinite cluster whose distance from the origin is larger than  $t$ :

$$\begin{aligned} \overline{\mathbb{P}}_p\left(\mathcal{B}_\mu\left(y, \frac{\varepsilon t}{8}\right) \cap B_t = \emptyset\right) & \leq \overline{\mathbb{P}}_p\left(\mathcal{B}_\mu\left(y, \frac{\varepsilon t}{8}\right) \cap C_\infty = \emptyset\right) \\ & + \overline{\mathbb{P}}_p\left(\exists z \in \mathcal{B}_\mu\left(y, \frac{\varepsilon t}{8}\right) \quad t < D(0, z) < \infty\right). \end{aligned}$$

By Equation (4), the first term is less than  $A_3 \exp(-\frac{B_3 \varepsilon t}{8\mu(e_1)})$ . Note also that if  $z \in \mathcal{B}_\mu\left(y, \frac{\varepsilon t}{8}\right)$ , then  $\mu(z) \leq \mu(y) + \frac{\varepsilon t}{8} \leq \left(1 - \frac{5\varepsilon}{8}\right)t$ . Thus

$$\begin{aligned} & \overline{\mathbb{P}}_p\left(\exists z \in \mathcal{B}_\mu\left(y, \frac{\varepsilon t}{8}\right) \quad t < D(0, z) < \infty\right) \\ & \leq \sum_{z \in \mathcal{B}_\mu\left(y, \frac{\varepsilon t}{8}\right)} \overline{\mathbb{P}}_p\left(\left(1 - \frac{5\varepsilon}{8}\right)^{-1} \mu(z) < D(0, z) < \infty\right). \end{aligned}$$

For such  $z$ , we have  $\mu(z) \geq \mu(y) - \frac{\varepsilon t}{8} \geq \frac{5\varepsilon}{8}t$ , and by Theorem 1.3, there exist two positive absolute constants  $A, B$  such that

$$\overline{\mathbb{P}}_p\left(\exists z \in \mathcal{B}_\mu\left(y, \frac{\varepsilon t}{8}\right) \quad t < D(0, z) < \infty\right) \leq A(\varepsilon t)^d e^{-B\varepsilon t}.$$

And we finally obtain:

$$\begin{aligned} & \overline{\mathbb{P}}_p\left(\mathcal{B}_\mu(0, 1) \not\subset \frac{B_t}{t} + \mathcal{B}_\mu(0, \varepsilon)\right) \\ & \leq \sum_{\frac{3\varepsilon}{4}t \leq \mu(y) \leq \left(1 - \frac{3\varepsilon}{4}\right)t} A_3 \exp\left(-\frac{B_3 \varepsilon t}{8\mu(e_1)}\right) + A(\varepsilon t)^d e^{-B\varepsilon t} \\ & \leq Ct^d \left(A_3 \exp\left(-\frac{B_3 \varepsilon t}{8\mu(e_1)}\right) + A(\varepsilon t)^d e^{-B\varepsilon t}\right), \end{aligned}$$

which ends the proof of the theorem.

## REFERENCES

- [1] Peter Antal and Agoston Pisztora. On the chemical distance for supercritical Bernoulli percolation. *Ann. Probab.*, 24(2):1036–1048, 1996.
- [2] J. T. Chayes, L. Chayes, G. R. Grimmett, H. Kesten, and R. H. Schonmann. The correlation length for the high-density phase of Bernoulli percolation. *Ann. Probab.*, 17(4):1277–1302, 1989.
- [3] Yunshyong Chow and Yu Zhang. Large deviations in first-passage percolation. *Ann. Appl. Probab.*, 13(4):1601–1614, 2003.
- [4] J. Theodore Cox and Richard Durrett. Some limit theorems for percolation processes with necessary and sufficient conditions. *Ann. Probab.*, 9(4):583–603, 1981.
- [5] Jean-Dominique Deuschel and Agoston Pisztora. Surface order large deviations for high-density percolation. *Probab. Theory Related Fields*, 104(4):467–482, 1996.
- [6] R. Durrett and R. H. Schonmann. Large deviations for the contact process and two-dimensional percolation. *Probab. Theory Related Fields*, 77(4):583–603, 1988.
- [7] Olivier Garret and Régine Marchand. Asymptotic shape for the chemical distance and first-passage percolation on the infinite Bernoulli cluster. *ESAIM Probab. Statist.*, 8:169–199, 2004.
- [8] G. R. Grimmett and J. M. Marstrand. The supercritical phase of percolation is well behaved. *Proc. Roy. Soc. London Ser. A*, 430(1879):439–457, 1990.
- [9] Geoffrey Grimmett and Harry Kesten. First-passage percolation, network flows and electrical resistances. *Z. Wahrsch. Verw. Gebiete*, 66(3):335–366, 1984.
- [10] Harry Kesten. Aspects of first passage percolation. In *École d’été de probabilités de Saint-Flour, XIV—1984*, volume 1180 of *Lecture Notes in Math.*, pages 125–264. Springer, Berlin, 1986.
- [11] T.M. Liggett, R.H. Schonmann, and A.M. Stacey. Domination by product measures. *Ann. Probab.*, 25:71–95, 1997.

LABORATOIRE DE MATHÉMATIQUES, APPLICATIONS ET PHYSIQUE MATHÉMATIQUE D’ORLÉANS  
 UMR 6628, UNIVERSITÉ D’ORLÉANS, B.P. 6759, 45067 ORLÉANS CEDEX 2 FRANCE  
*E-mail address:* `Olivier.Garet@labomath.univ-orleans.fr`

INSTITUT ELIE CARTAN NANCY (MATHÉMATIQUES), UNIVERSITÉ HENRI POINCARÉ NANCY 1,  
 CAMPUS SCIENTIFIQUE, BP 239, 54506 VANDOEUVRE-LÈS-NANCY CEDEX FRANCE  
*E-mail address:* `Regine.Marchand@iecn.u-nancy.fr`