



HAL
open science

When 2D is not enough, go for an extra dimension.

Thierry Rabilloud

► **To cite this version:**

Thierry Rabilloud. When 2D is not enough, go for an extra dimension.. Proteomics, 2013, 13 (14), pp.2065-8. 10.1002/pmic.201300215 . hal-00904689

HAL Id: hal-00904689

<https://hal.science/hal-00904689>

Submitted on 15 Nov 2013

HAL is a multi-disciplinary open access archive for the deposit and dissemination of scientific research documents, whether they are published or not. The documents may come from teaching and research institutions in France or abroad, or from public or private research centers.

L'archive ouverte pluridisciplinaire **HAL**, est destinée au dépôt et à la diffusion de documents scientifiques de niveau recherche, publiés ou non, émanant des établissements d'enseignement et de recherche français ou étrangers, des laboratoires publics ou privés.

This is the author version of the following article: When 2D is not enough, go for an extra dimension. Rabilloud T. Proteomics. 2013 Jul;13(14):2065-8. doi: 10.1002/pmic.201300215, which has been published in final form at <http://onlinelibrary.wiley.com/doi/10.1002/pmic.201300215/abstract;jsessionid=715B759B04B94BC957971B3A6206D994.f03t01>

When 2D is not enough, go for an extra dimension

Thierry Rabilloud 1,2,3

1: CNRS, Laboratory of Chemistry and Biology of Metals (LCBM), UMR 5249, Grenoble, France

2: Univ. Grenoble Alpes, LCBM, Grenoble, France

3: CEA, iRTSV/LCBM, Grenoble France

Postal address

Pro-MD team, UMR CNRS-CEA-UJF 5249, iRTSV/LCBM, CEA Grenoble, 17 rue des martyrs, 38054 Grenoble CEDEX 9, France

email: thierry.rabilloud@cea.fr

Abstract

The use of an extra SDS separation in a different buffer system provide a technique for deconvoluting 2D gel spots made of several proteins [Colignon et al. Proteomics, 2013, 13: xxx-yyy]. This technique keeps the quantitative analysis of the protein amounts and combines it with a strongly improved identification process by mass spectrometry, removing identification ambiguities in most cases. In some favorable cases, post-translational variants can be separated by this procedure. This versatile and easy to use technique is anticipated to be a very valuable addition to the toolbox used in 2D gel-based proteomics.

Main text

Because of its robustness, capacity to handle large sample series, easy interface with many other biochemical techniques and above all its unique ability to analyse complete proteins, 2D gel electrophoresis is still a relevant approach in many proteomic studies [1, 2]. In most cases, 2D gel electrophoresis is used as a first quantitative screening process to select the spots which abundance change upon the biological phenomenon of interest. It is then necessary to identify the proteins present in these modulated spots to obtain a quantitative biochemical view of the molecular events at play in the biological phenomenon of interest.

For many years, i.e. from 1990 to 2005, this has been a straightforward process, as the protein analysis techniques, namely Edman's sequencing and then mass spectrometry, always rendered one protein per electrophoretic 2D spot. However, with the ever increasing sensitivity of mass spectrometers, this equation is less and less true with the proportion of singulets (one protein per spot) going down, from 70% in 2005 [3] to 50% in 2013 [4]. This does not disqualify 2D gel-based proteomics per se, as previously stated [5], as long as it is possible to correlate with

good confidence the variation in a spot volume with the variation of one protein. Using a reduction ad absurdum, all the historical data using low sensitivity methods able to identify a moderately complex mixture of proteins, whether Edman's sequencing [6, 7], or tandem mass spectrometry [8, 9] point to the fact that almost all 2D spots are made of a major protein, which explains the quantitative variations in staining, and of minor components that do not play any role in the staining variation but are real components of the protein spot.

This fact should not come as a surprise, when integrating on the one hand the resolving power of 2D gels and on the other hand the dynamic range of the proteome and the number of different protein species present in any complex biological sample.

Thus, the name of the game is to identify this major component in the protein spots. As shown in figure 1 and table 1, this is sometimes quite straightforward (spots 1 to 3) and sometimes almost impossible (spots 4 to 8) from the simple MS/MS output. Several approaches can be designed to circumvent this major problem. The simplest one is to analyse less and less protein in the spots, so that the mass spectrometer will find only the most abundant component. This can be achieved by analyzing small silver-stained spots, with the major risk that many spots will no longer show any identification.

A much more powerful and elegant approach is to combine the peptide by peptide quantitative analysis of SILAC with the ability of 2D gels to resolve complete proteins, as exemplified by a recent work on HeLa cells [4]. However, not all biological systems are easily amenable to SILAC labelling, which is in addition a costly procedure.

All in all, the ideal solution would be to be able to deconvolute the 2D spots into their individual proteic components in a quantitative way. This would allow to check which component(s) account for the quantitative variation in staining while making the mass spectrometric identification unambiguous again. This is exactly what is achieved by the third dimension electrophoresis described by Colignon et al. [10], in which the 2D spots are excised and re-electrophoresed on a different gel system to resolve them into individual components.

Three-dimensional electrophoresis has been described in the past, but in most cases the third dimension is carried before the conventional IEF-SDS separation [11, 12] and not after it as in the Colignon paper. Consequently, these approaches need to know upfront how to separate the proteins, which is seldom the case in most proteomic studies. Perhaps the most impressive 3D electrophoresis is the gel cube [13], which uses IEF as one separation dimension and two different SDS systems in the other two. While theoretically equivalent to the Colignon setup, the gel cube is much more cumbersome to handle and clearly not as straightforward as an approach which can be carried out on minigels and on only the spots that need it.

The only approach described in the literature that can be compared with the Colignon setup is the one described by Vanfleteren [14], but it used a very specialized electrophoretic system which may not be applicable to all proteins.

The few examples shown in the Colignon paper demonstrate both the power and the limitation of the method. As the third dimension is also a SDS electrophoresis, some proteins that comigrate in 2D gels will still comigrate in the third dimension, leading to multiple identifications in mass spectrometry. Despite this intrinsic limitation, the technique works surprisingly well in its ability to deconvolute 2D gels spots, and the well-known versatility of SDS electrophoresis calls for a very wide scope of application, with very few proteins intractable to the third dimension. In addition, it

seems that the third dimension may be sometimes able to separate post-translational variants, which further adds to the attractiveness of the technique. In summary, this technique is easy to implement, cheap, and is likely to bring in most cases the extra separation that is more and more needed to interface safely 2D gels with the more and more sensitive mass spectrometers.

Footnote: the author has declared no conflict of interest

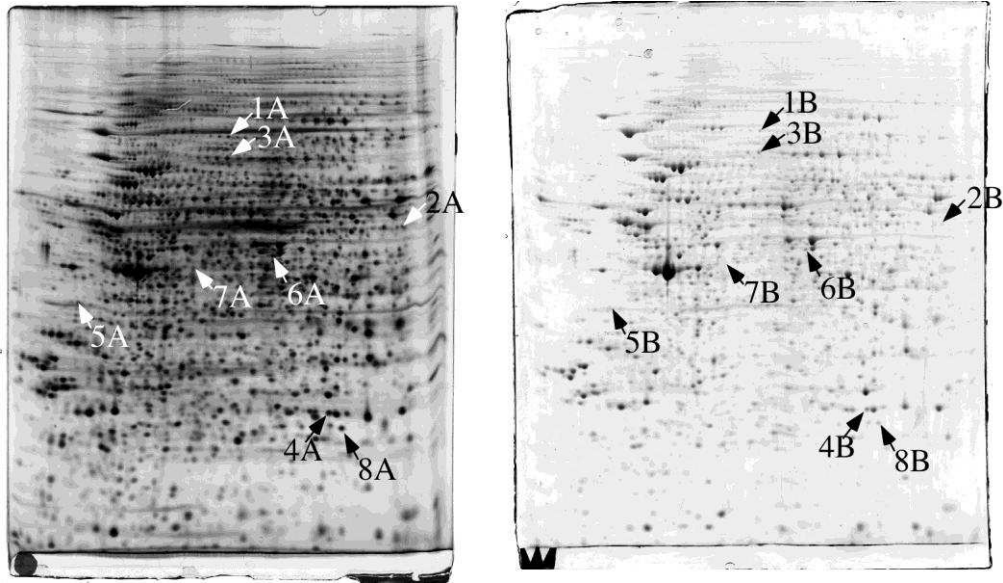


Figure 1: comparison of silver-stained and Coomassie blue-stained gels. A whole cell extract of RAW264 murine macrophage cell line was separated by 2D gel electrophoresis (linear pH gradient ranging from 4 to 8 in the first dimension, 10% T gel in the second dimension).

Left panel: one hundred micrograms of proteins loaded on the first dimension gel, detection by silver staining

Right panel: five hundred micrograms of proteins loaded on the first dimension gel, detection by colloidal Coomassie Blue

Equivalent spots were excised on the two gels, digested with trypsin, and the resulting peptides analyzed by tandem mass spectrometry on an ion trap instrument. The resulting data are presented on table 1.

Table 1: identification data for the spots excised from the gels shown in Figure 1

Spots 1 to 3 illustrate easy cases where no ambiguity is encountered, whereas spots 4 to 8 illustrate difficult cases where no straightforward identification can be made when supra-optimal amounts of proteins are present in the spots.

spot Nb.	protein name	Swissprot accession number	MW	Nb. Unique peptides	sequence coverage
1A	Mitofilin	Q8CAQ8	83901,1	2	2,64%
1B	Mitofilin	Q8CAQ8	83901,1	33	52,40%
	ATP synthase subunit alpha	Q03265	59754,1	1	2,71%
2A	ATP synthase subunit alpha	Q03265	59754,1	8	15,90%
2B	ATP synthase subunit alpha	Q03265	59754,1	28	54,60%
	Glutamate dehydrogenase 1	P26443	61417,4	2	3,76%
	Irg1	P54987	53759,6	1	2,05%
	Serbp1	Q9CY58	44754,6	1	3,93%
	Ripk3	Q9QZL0	53336,4	1	2,88%
	Ugp2	Q91ZJ5	56925,9	1	2,36%
3A	Moesin	P26041	67821,8	2	2,60%
3B	Moesin	P26041	67768,8	27	40,20%
	Glycine--tRNA ligase	Q9CZD3	81879,1	15	19,50%
	Beta-glucuronidase	P12265	74195,7	3	4,63%
	CTP synthase 1	P70698	66690,7	3	4,74%
	PDI A4	P08003	71984,4	3	5,17%
4A	Hprt1	P00493	24571,3	3	16,50%
4B	Hprt1	P00493	24571,3	5	27,10%
	Triosephosphate isomerase	P17751	32191,3	4	19,40%
	Flavin reductase (NADPH)	Q923D2	22196,7	2	11,70%
	GTP-binding nuclear protein	P62827	24427,3	2	11,10%
	dtd1	Q9DD18	23232,3	1	7,18%
	GSH S-transferase Mu 5	P48774	26636,5	1	4,02%
	Pcmt1	P23506	24641,9	1	4,85%
5A	V-type H+ ATPase sub. d 1	P51863	40302,8	2	6,84%
5B	V-type H+ ATPase sub. d 1	P51863	40302,8	6	23,60%
	Nucleophosmin	Q61937	32560,3	4	22,90%
	Sgta	Q8BJU0	34157,8	3	11,10%
	Elongation factor 1-delta	P57776	31293,4	2	9,25%
	Phospholipid scramblase 1	Q9JJ00	35913,5	2	7,01%

	Adprh12	Q8CG72	39414,3	1	3,24%
6A	eIF 4A-III	Q91VC3	46842,4	8	19,50%
6B	eIF 4A-III	Q91VC3	46842,4	8	27,50%
	Adss2	P46664	50140,8	4	11,00%
	Clp1	Q99LI9	47629,1	2	4,71%
	Cathepsin D	P18242	44955	1	4,39%
	C-terminal-binding protein 1	O88712	47744,7	1	2,49%
	Elongation factor 1-gamma	Q9D8N0	50061,3	1	2,97%
	EF-Tu mitochondrial	Q8BFR5	49399,2	1	2,65%
7A	Protein NDRG1	Q62433	43008,2	2	7,61%
7B	Protein NDRG1	Q62433	43008,2	3	11,90%
	TAR DNA-binding protein 43	Q921F2	44547,5	3	9,90%
	Coronin-1A	O89053	50988,9	2	8,03%
	Creatine kinase B-type	Q04447	42714,1	2	7,35%
	Aldehyde dehydrogenase	P47738	56537,6	1	4,43%
	BRCA1-A complex subunit				
	BRE	Q8K3W0	43560,1	1	2,61%
	Cathepsin D	P18242	44955	1	4,39%
	Eif3G	Q9Z1D1	35639	1	4,06%
	Plastin-2	Q61233	70151,9	1	2,39%
8A	Psma2	P49722	25926,9	1	5,98%
8B	Psma2	P49722	25926,9	2	12,00%
	40S ribosomal protein SA	P14206	32885,3	2	9,49%
	GAPDH	P16858	35828,1	1	4,20%

References

- [1] Rabilloud, T., Vaezzadeh, A. R., Potier, N., Lelong, C., *et al.*, Power and limitations of electrophoretic separations in proteomics strategies. *Mass Spectrom Rev* 2009, 28, 816-843.
- [2] Rogowska-Wrzesinska, A., Le Bihan, M. C., Thaysen-Andersen, M., Roepstorff, P., 2D gels still have a niche in proteomics. *J Proteomics* 2013.
- [3] Campostrini, N., Areces, L. B., Rappsilber, J., Pietrogrande, M. C., *et al.*, Spot overlapping in two-dimensional maps: a serious problem ignored for much too long. *Proteomics* 2005, 5, 2385-2395.
- [4] Thiede, B., Koehler, C. J., Strozynski, M., Treumann, A., *et al.*, High resolution quantitative proteomics of HeLa cells protein species using stable isotope labeling with amino acids in cell culture(SILAC), two-dimensional gel electrophoresis(2DE) and nano-liquid chromatography coupled to an LTQ-Orbitrap Mass spectrometer. *Mol Cell Proteomics* 2013, 12, 529-538.
- [5] Hunsucker, S. W., Duncan, M. W., Is protein overlap in two-dimensional gels a serious practical problem? *Proteomics* 2006, 6, 1374-1375.
- [6] Hochstrasser, D. F., Frutiger, S., Paquet, N., Bairoch, A., *et al.*, Human liver protein map: a reference database established by microsequencing and gel comparison. *Electrophoresis* 1992, 13, 992-1001.
- [7] Rasmussen, H. H., van Damme, J., Puype, M., Gesser, B., *et al.*, Microsequences of 145 proteins recorded in the two-dimensional gel protein database of normal human epidermal keratinocytes. *Electrophoresis* 1992, 13, 960-969.
- [8] Clauser, K. R., Hall, S. C., Smith, D. M., Webb, J. W., *et al.*, Rapid mass spectrometric peptide sequencing and mass matching for characterization of human melanoma proteins isolated by two-dimensional PAGE. *Proc Natl Acad Sci U S A* 1995, 92, 5072-5076.
- [9] Shevchenko, A., Jensen, O. N., Podtelejnikov, A. V., Sagliocco, F., *et al.*, Linking genome and proteome by mass spectrometry: large-scale identification of yeast proteins from two dimensional gels. *Proc Natl Acad Sci U S A* 1996, 93, 14440-14445.
- [10] Colignon, B., Raes, M., Dieu, M., Delaive, E., Mauro, S., Evaluation of three-dimensional gel electrophoresis to improve quantitative profiling of complex proteomes. *Proteomics* 2013.
- [11] Werhahn, W., Braun, H. P., Biochemical dissection of the mitochondrial proteome from *Arabidopsis thaliana* by three-dimensional gel electrophoresis. *Electrophoresis* 2002, 23, 640-646.
- [12] Nakano, K., Tamura, S., Otuka, K., Niizeki, N., *et al.*, Development of a highly sensitive three-dimensional gel electrophoresis method for characterization of monoclonal protein heterogeneity. *Anal Biochem* 2013, 438, 117-123.
- [13] Lee, B. S., Gupta, S., Morozova, I., High-resolution separation of proteins by a three-dimensional sodium dodecyl sulfate polyacrylamide cube gel electrophoresis. *Anal Biochem* 2003, 317, 271-275.
- [14] Vanfleteren, J. R., Sequential two-dimensional and acetic acid/urea/Triton X-100 gel electrophoresis of proteins. *Anal Biochem* 1989, 177, 388-391.