



HAL
open science

Landscape characterization of Rift Valley Fever risk areas using very high spatial resolution imagery - case study in the Ferlo area, Senegal

Valérie Soti, Véronique Chevalier, Jonathan Maura, Diam Abdoul Sow, Agnès Bégué, Camille Lelong, Renaud Lancelot, Annelise Tran

► To cite this version:

Valérie Soti, Véronique Chevalier, Jonathan Maura, Diam Abdoul Sow, Agnès Bégué, et al.. Landscape characterization of Rift Valley Fever risk areas using very high spatial resolution imagery - case study in the Ferlo area, Senegal. Towards a multi-scale approach for improving pest management. Sampling methods, Remote Sensing and GIS: applications to insect ecology and management, Oct 2011, Montpellier, France. <cirad-00645844>

HAL Id: cirad-00645844

<https://hal.science/cirad-00645844v1>

Submitted on 6 Jun 2020

HAL is a multi-disciplinary open access archive for the deposit and dissemination of scientific research documents, whether they are published or not. The documents may come from teaching and research institutions in France or abroad, or from public or private research centers.

L'archive ouverte pluridisciplinaire HAL, est destinée au dépôt et à la diffusion de documents scientifiques de niveau recherche, publiés ou non, émanant des établissements d'enseignement et de recherche français ou étrangers, des laboratoires publics ou privés.



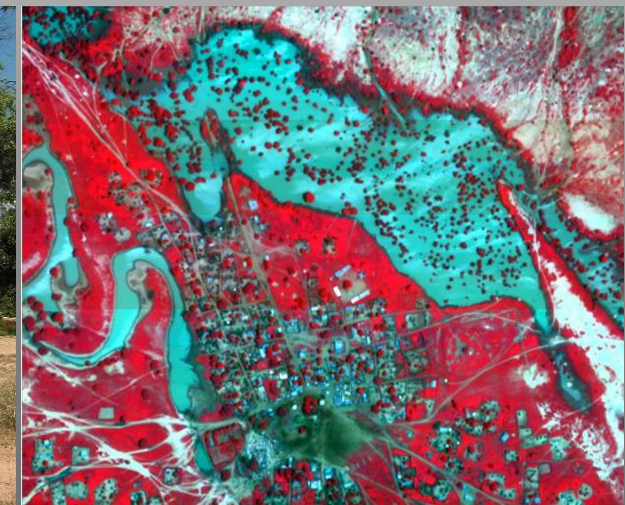
HAL Authorization



Landscape characterization of Rift Valley Fever risk areas using very high spatial resolution imagery : case study in the Ferlo area, Senegal.

V.Soti^{1,2,3}, V.Chevalier¹, J.Maura¹, D.Sow⁵, A. Begue², C.Lelong², R. Lancelot⁴, A. Tran^{1,2}

1: Cirad, AGIRs ;2: Cirad, UMR TETIS; 3: Cirad, UPR SCA ; 4: Cirad, UMR15; 5: ISRA,Dakar, Sénégal





Outline

I. Study context

- 1.1 Study area
- 1.2 The Rift Valley Fever
- 1.3 Objectives and approach

II. Image processing

- 2.1 Water detection
- 2.2 Vegetation maps

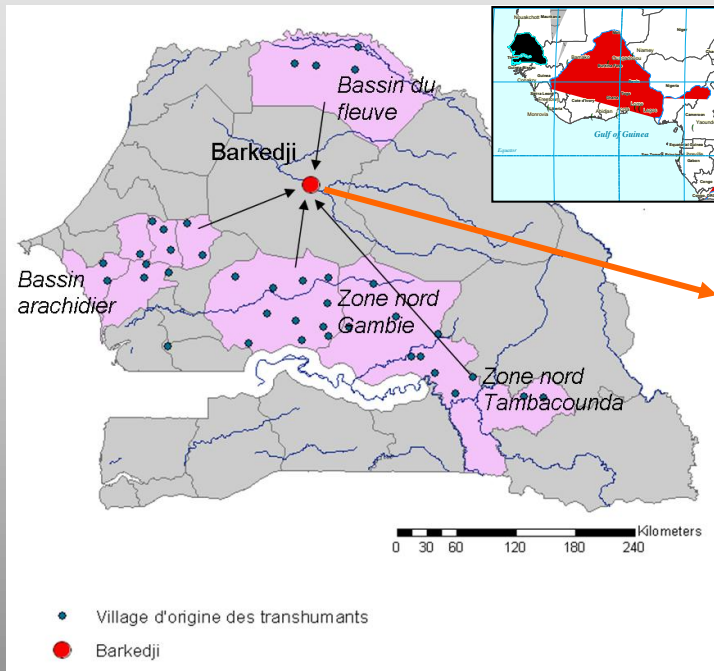
III. Landscape analysis

- 3.1 Definition of landscape indices
- 3.2 Extraction of landscape indices
- 3.2 Statistical analysis

IV. Conclusions and perspectives

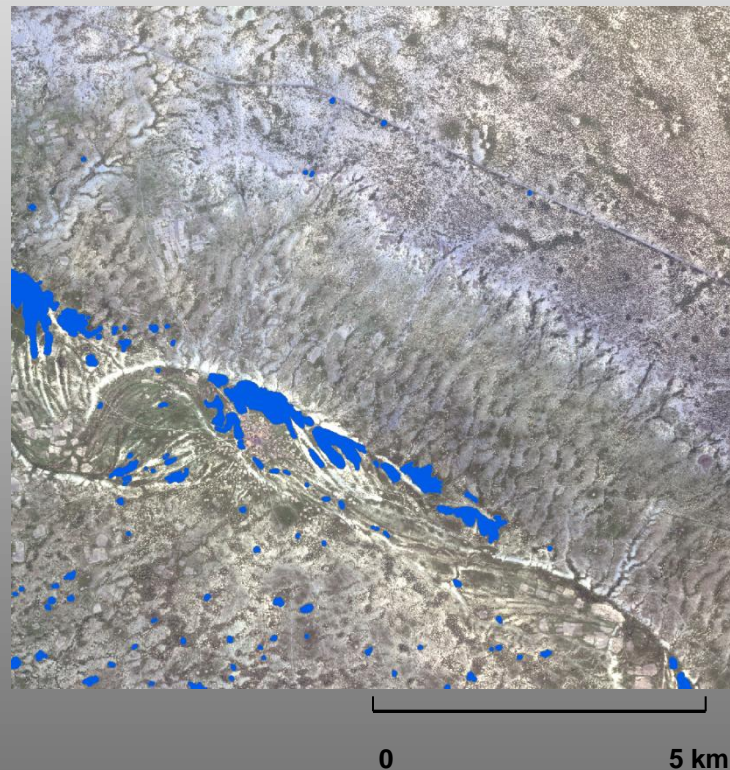
Study area

➤ Agropastoral zone



➤ Sahelian climate :

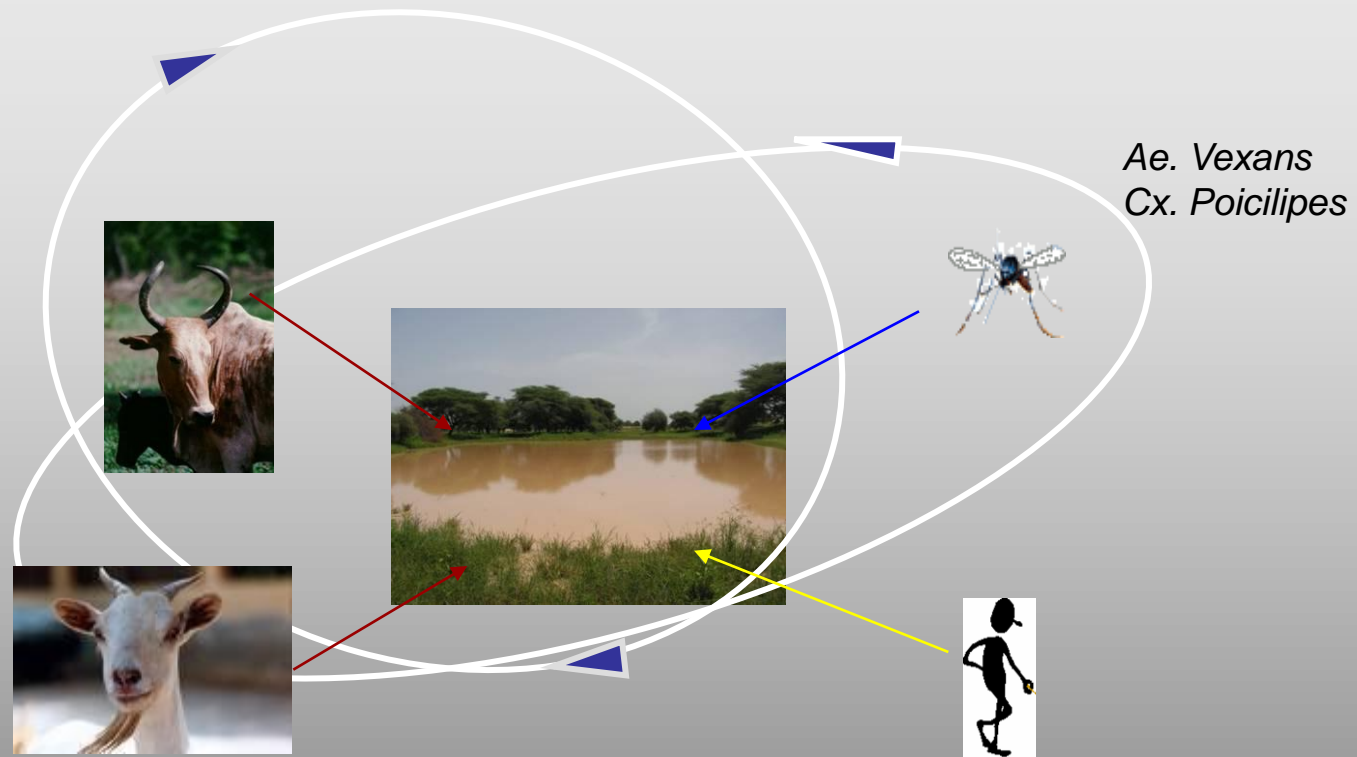
- Dry climate
- Low precipitation : 300 to 500 mm from July to October
- Shrubby vegetation



➤ A dense pond network

- Temporary ponds are flooded during the rainy season
- Ponds are not very deep
- A high variability of water level

Cycle of RVFV Transmission



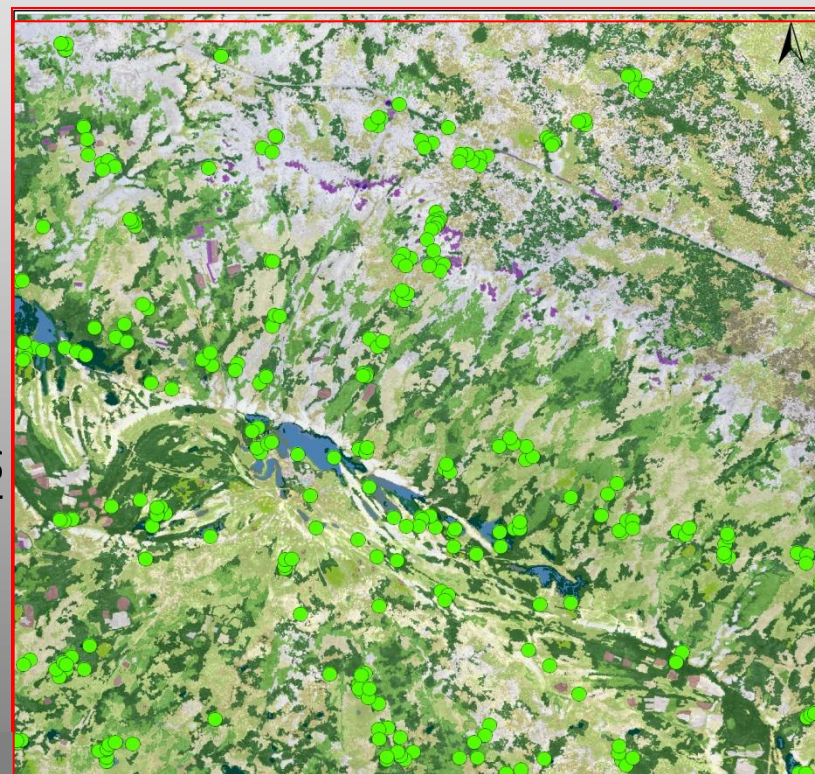
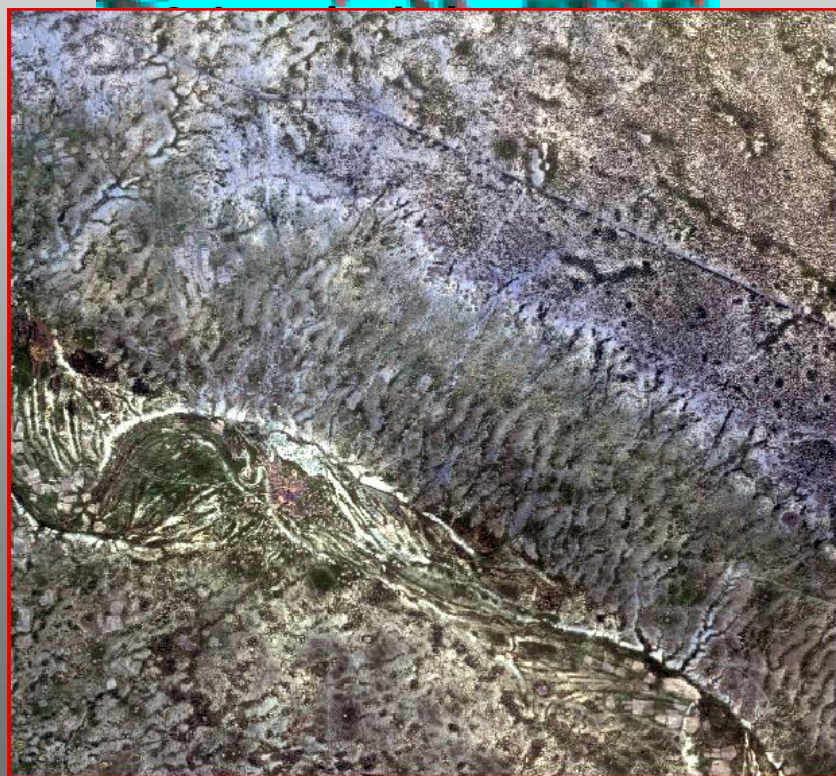
Aim of the study / landscape approach :

- Study the relationship between epidemiological data and landscape variables
- To identify landscape variables that can explain the RVF incidence in a pest control perspective

DATA

- 1) Satellite Image acquisition : Quickbird sensor
- 2) Sheep serologic incidence Data collected in 2003
- 3) Field vegetation surveys

(Bands B, V, R, PIR)



13 km



293 field vegetation data



8 compounds
Sheep seroconversion rate

Date acquisition : 5th august 2004

2.1 Pond map

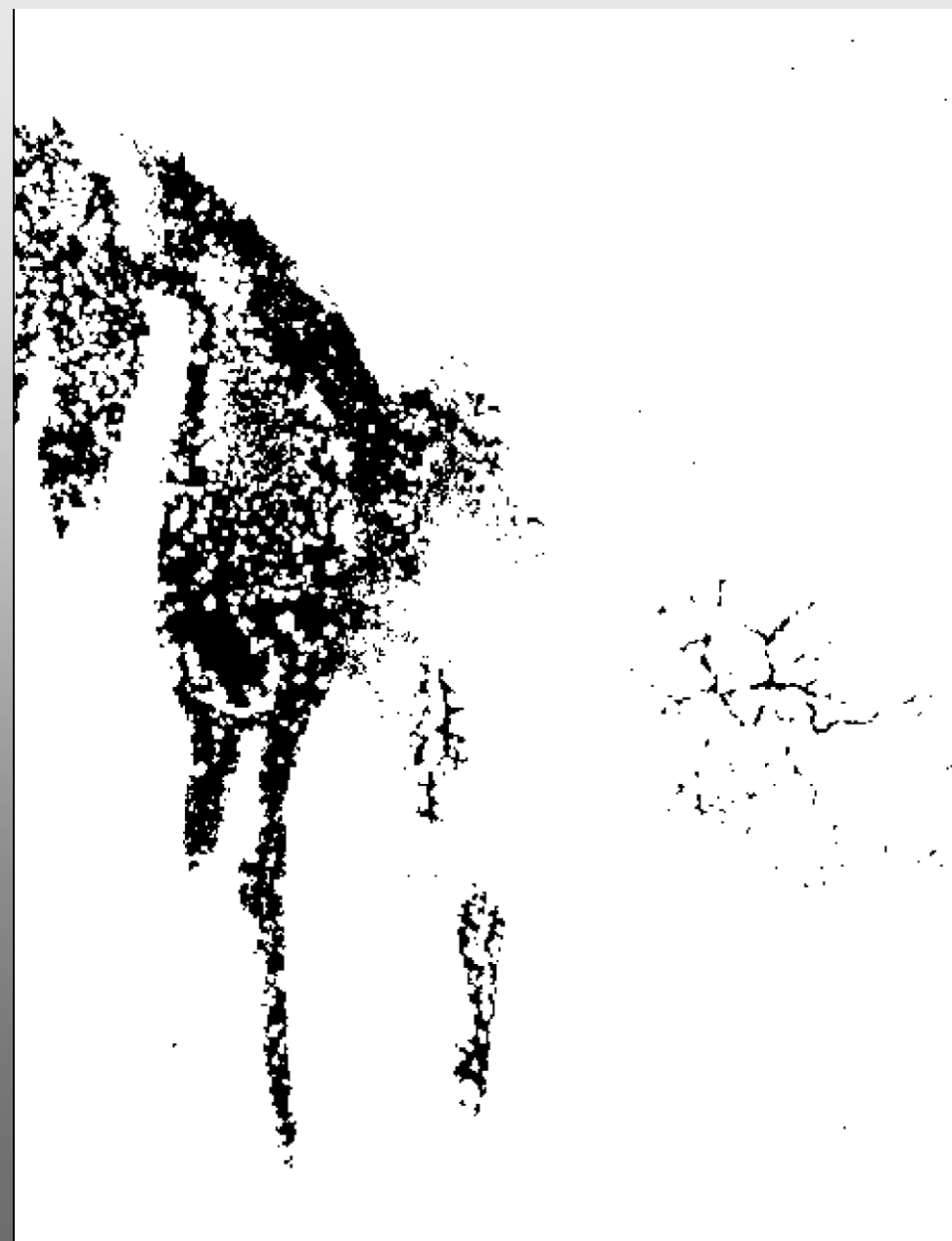
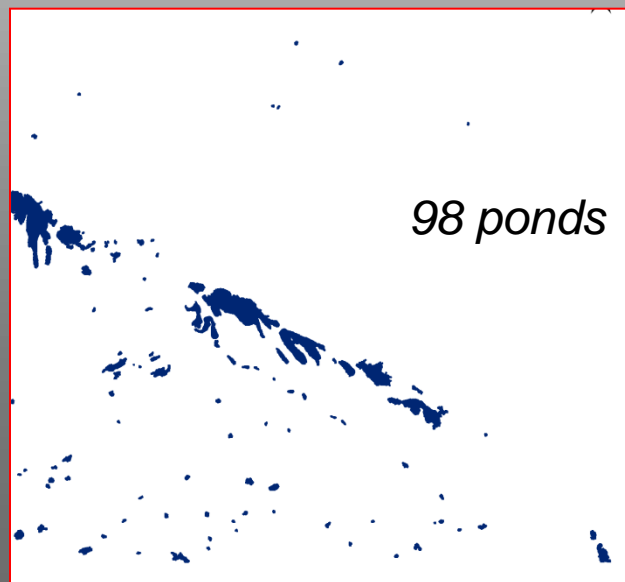
Spatial distribution of ponds

Water index -> NDWI :

$$\frac{[V - NIR]}{[V + NIR]}$$

(Mac Feeter, 1996)

- 98 ponds or water bodies were detected.
- Smallest surface : 195 m²



2.2) Vegetation maps

Methodology

Step 1

Image segmentation

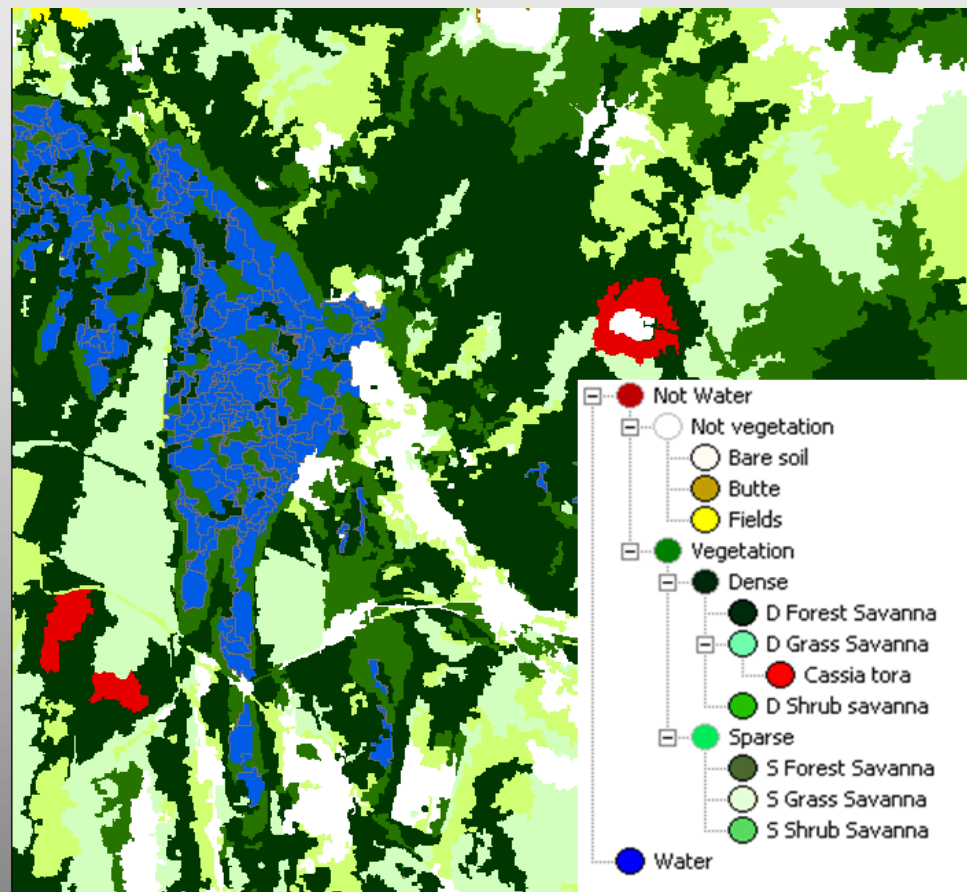
Step 2

Supervised classification

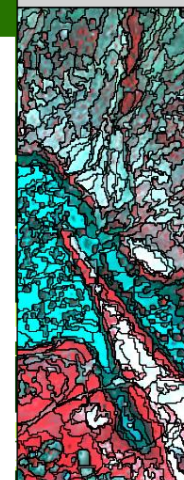
- Nearest neighbour classification algorithm
- Selection of training sites (125 field data)
- Vegetation map composed by 11 classes :

Step 3

Accuracy assessment



Characterize pond



	Sparse forest savana	Dense grass savana	Cassia tora	Culture	Bare soil	Sparse shrub savana	Laterite butte	Dense shrub savana	Dense forest savana	Sparse grass
Producer	0,65	1,00	0,44	0,54	0,98	0,50	0,80	0,99	0,89	0,99
User	0,88	0,31	1,00	1,00	0,44	0,99	1,00	1,00	0,87	0,77

The Global mean accuracy was 78% and Kappa index of 0.75 which corresponds to a quite good agreement between the two data sets

3.1 Landscape variables definition

Areas with a high density of ponds are more at risk

(Chevalier, 2005)

Ponds covered with vegetation are habitats favourable to the mosquitoes, as breeding sites and rest areas

(Becker, 1989 ; Clements, 1999)

Vegetation is known having impacts on mosquitoes presence and displacement

(Clements, 1999)

1) Water pond area

2) Pond location
(inside/ outside the main stream)

(Chevalier et al., 2005)

3) Pond density Index (PDI)
(radius = 1 km)

(Ba Yamar et al.2005)

4) Water Vegetation Index
(WVI)

Landscape Closure Index (LCI)

5) LCI - 100 m

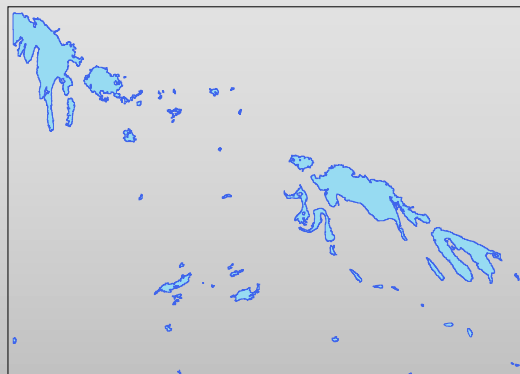
6) LCI - 500 m

7) LCI - 1000 m

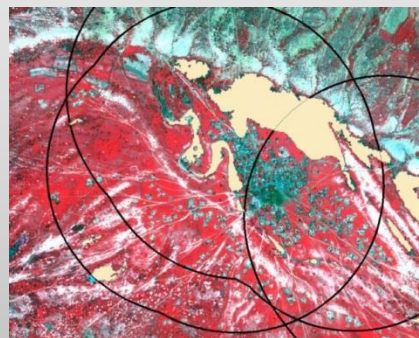
(Ba Yamar et al.2005) 8

3.2 Landscape variables calculation

Pond map



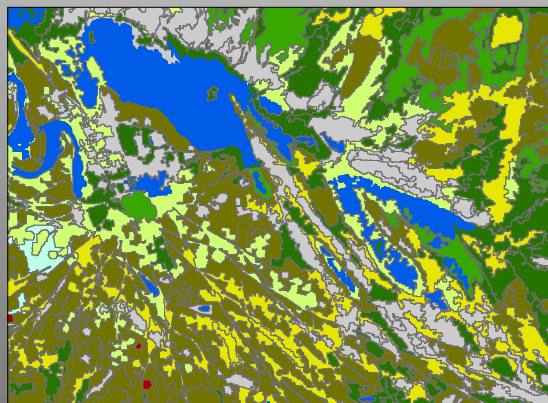
For each pond:



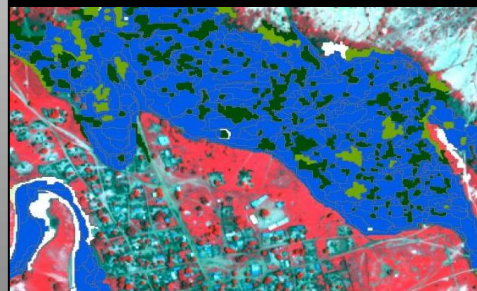
Pond density index (*PDI*)
(within a 1 km radius)

$$PDI_i = \sum_{j=1}^n \frac{1}{SW_j}$$

Vegetation map



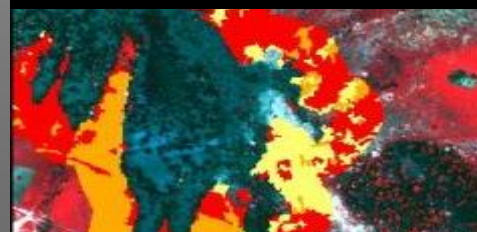
Végétation (*SV*)
Water (*SM*)



Water vegetation
Index (*WVI*)

$$WVI_i = \frac{SV_i}{SW_i}$$

Closed Landscape (*CL*)
Moderately open Landscape (*MOL*)
Open landscape (*MO*)



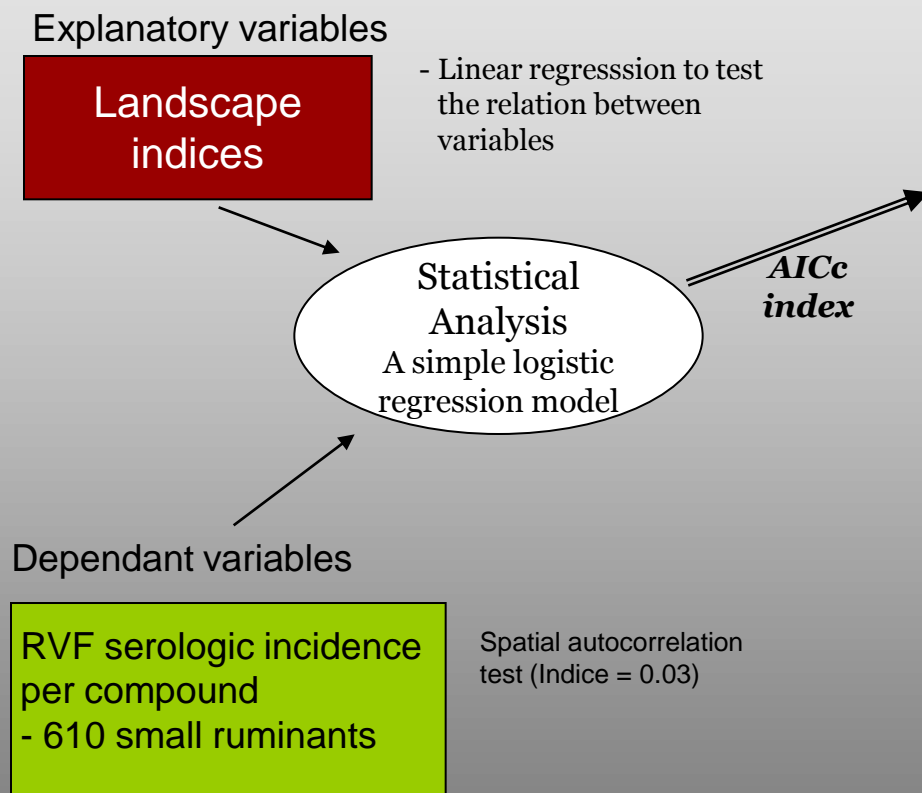
Landscape closure
Index (*LCI*)

$$LCI_i = \frac{CL_i}{OL_i + MOL_i}$$

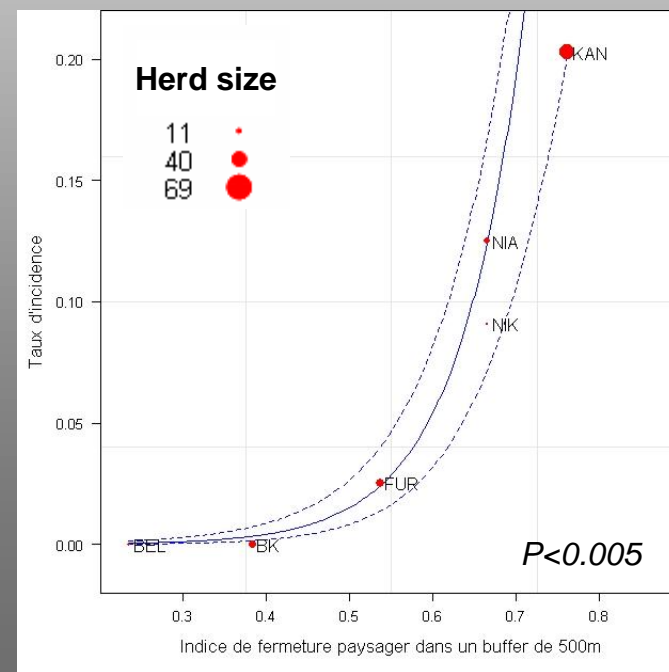
Culture	Savane arborée claire
Cassia tora	Savane arborée dense
Savane herbeuse claire	Eau
Savane herbeuse dense	Butte de cuirasse
Savane arbustive claire	Sol nu
Savane arbustive dense	

3.3 Statistical analysis

Relations between landscape variables and serologic incidence



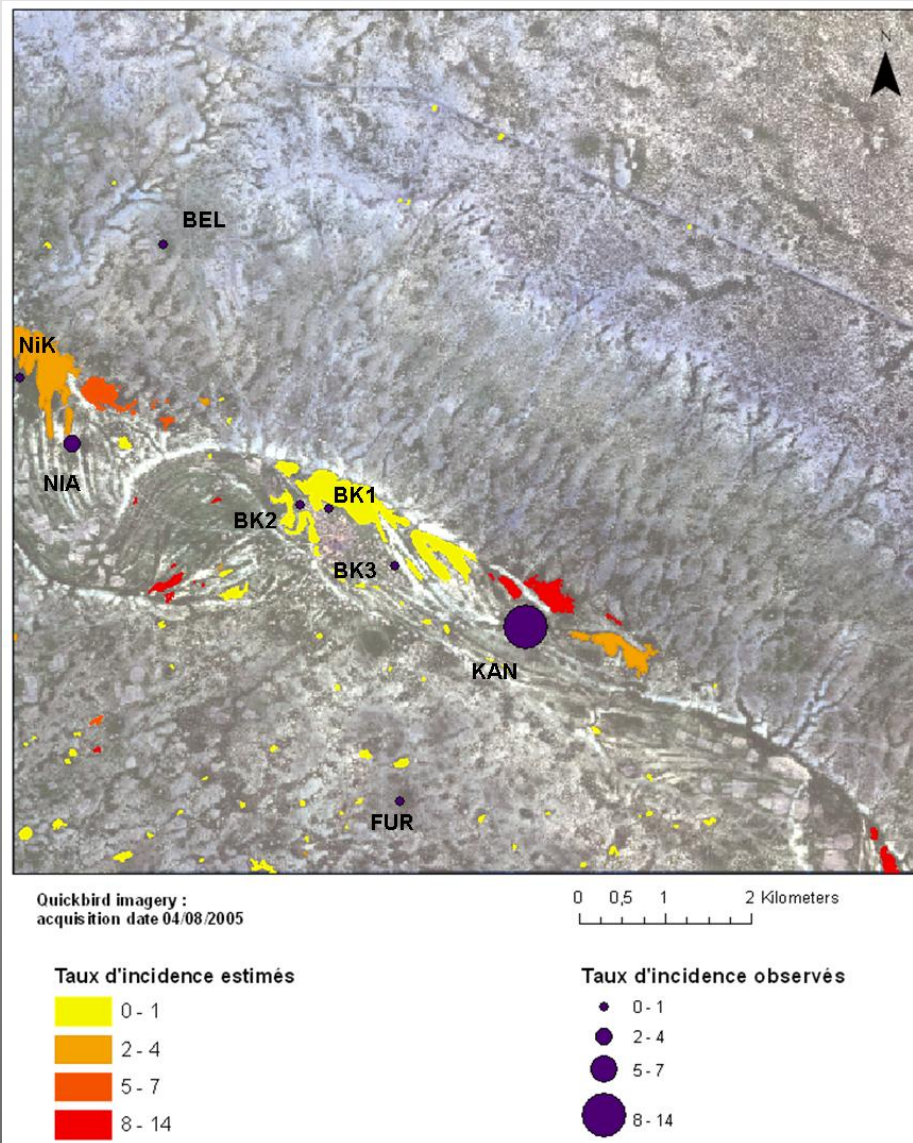
	Model	Deviance	Parameters	AICc	$\Delta AICc$
1	IF_500m	2,76	3	25,4	0
2	IF_100m	3,71	3	26,3	0,95
3	IF_1000m	7,43	3	30,1	4,67
4	IF_500m + IDM	1,81	4	33,8	8,39
5	IF_500m + Surface	2,41	4	34,4	8,98
6	IF_500m + Ferlo	3,09	4	35,1	9,66
7	Ferlo + IVM	3,29	4	35,3	9,87
8	IF_100m + IDM	3,85	4	35,8	10,43
9	IF_100m + Surface	4,04	4	36	10,61
10	IF_1000m + IDM	4,17	4	36,1	10,75



The more the vegetation is dense, the more the serological incidence rate in a herd is high

3.3 Statistical analysis

Risk map of RVF serological incidence



- A spatial heterogeneity of the RVF risk transmission
 - The RVF risk transmission is greater in the main stream of the Ferlo river
 - Notes a significant effect of the « vegetation density in a 500 m radius around the pond » on the RVF transmission risk
- > 500 m = coincides with the dispersion scale of mosquitoes (*Ba Yamar et al., 2005*), but also with the average distance between the pond and the location of compounds (*Pin-Diop, 2007*).

- A low number of observations
 - An indirect index (data on mosquito abundance were not available)
- > More field surveys are required to confirm the results

Conclusions and perspectives

❖ *Conclusions*

- Quickbird imagery : potentialities to characterize the habitat of the insects with a low dispersal capacity
- Vegetation influence on the spatial heterogeneity of the disease distribution
- Importance of the landscape structure (habitat connectivity) on the disease risk transmission.

❖ *Perspectives*

- Test of a vegetation index (e.g. NDVI)
- Test of imagery with lower spatial resolution with lower costs (e.g. SPOT5)
- Provide regional RVF transmission risk maps as a support for decision makers





Thanks for your attention

