



Wood for bees, which interactions?

Anna Dupleix

► To cite this version:

| Anna Dupleix. Wood for bees, which interactions?. Master. Iran. 2018. cel-02010186

HAL Id: cel-02010186

<https://hal.science/cel-02010186>

Submitted on 19 Mar 2019

HAL is a multi-disciplinary open access archive for the deposit and dissemination of scientific research documents, whether they are published or not. The documents may come from teaching and research institutions in France or abroad, or from public or private research centers.

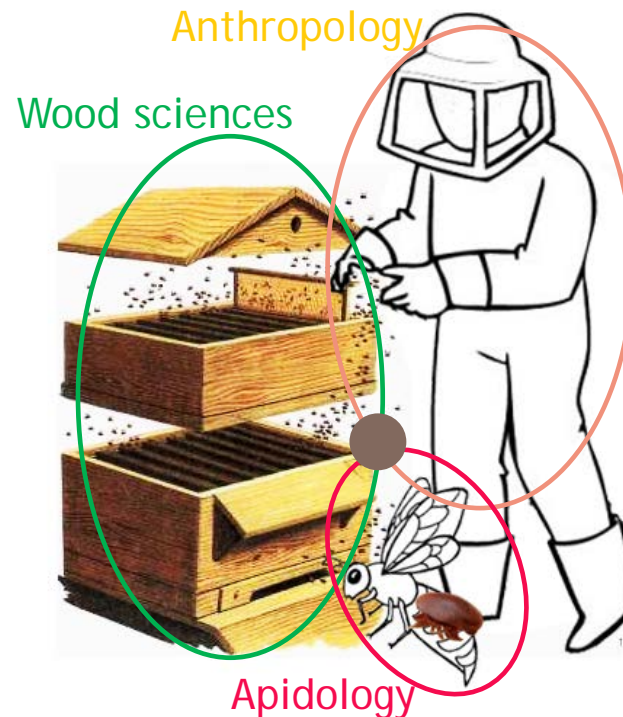
L'archive ouverte pluridisciplinaire **HAL**, est destinée au dépôt et à la diffusion de documents scientifiques de niveau recherche, publiés ou non, émanant des établissements d'enseignement et de recherche français ou étrangers, des laboratoires publics ou privés.

Wood for bees, which interactions?



Laboratoire de Mécanique et Génie Civil

Montpellier, France



Contents

- ▶ The researcher
- ▶ The laboratory
- ▶ The project
- ▶ The history
- ▶ Physical approach
- ▶ Chemical and ecological approach
- ▶ Social sciences approach
- ▶ Latest developments
- ▶ Future work

Researcher background

- ▶ Engineer
- ▶ Master degree in Wood Technology
- ▶ Master of research in Timber design

Topic : Investigation on failure modes of multiple-nailed steel-to-timber connections loaded parallel to the grain

- ▶ PhD degree in Wood mechanics

International co-tutelle agreement between Arts et Métiers ParisTech LaBoMaP, Cluny, France and Aalto University, Helsinki, Finland

Topic : Feasibility of wood peeling assisted by infrared



Master thesis : Investigating failure modes of multiple-nailed steel-to-timber connections loaded parallel to the grain

Case study : Radiata Pine (Pinus Radiata)

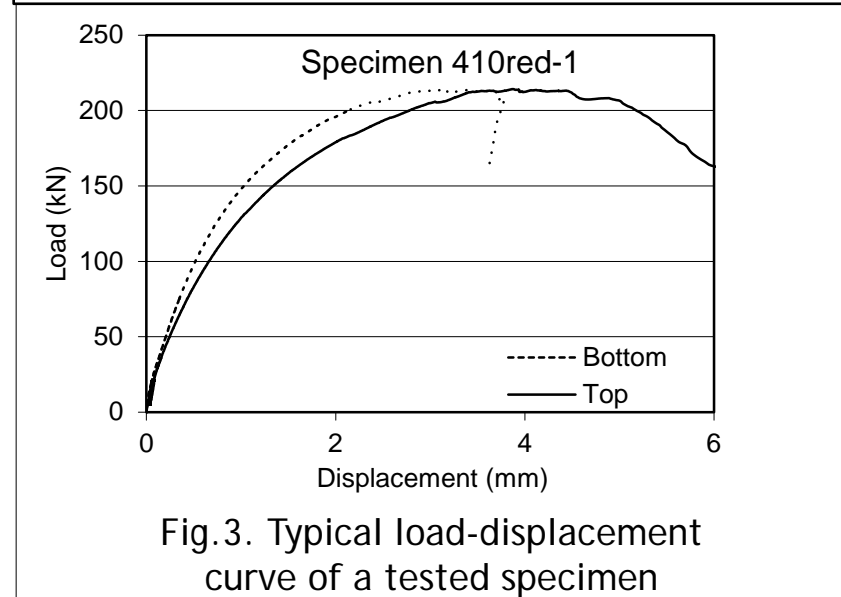
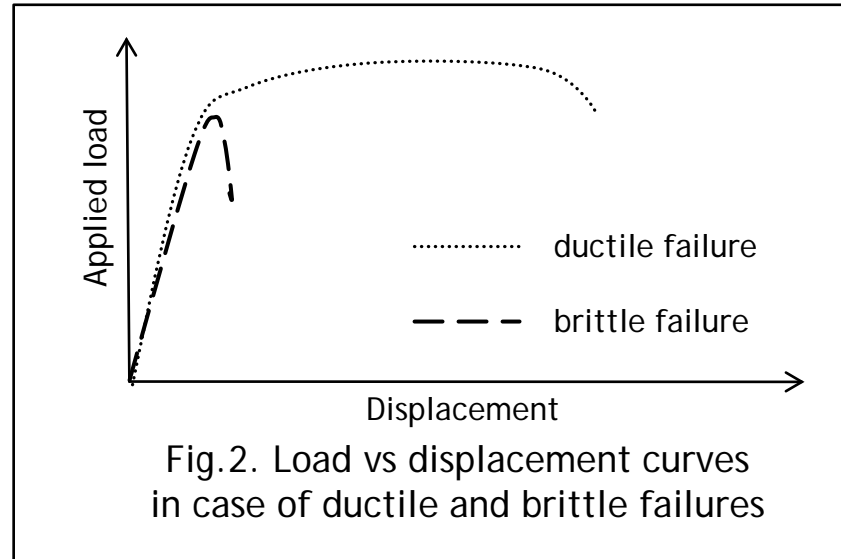


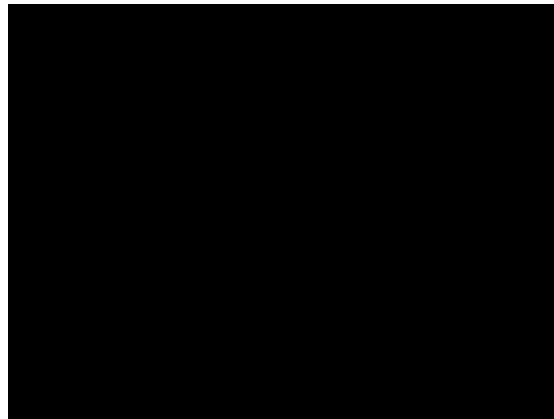
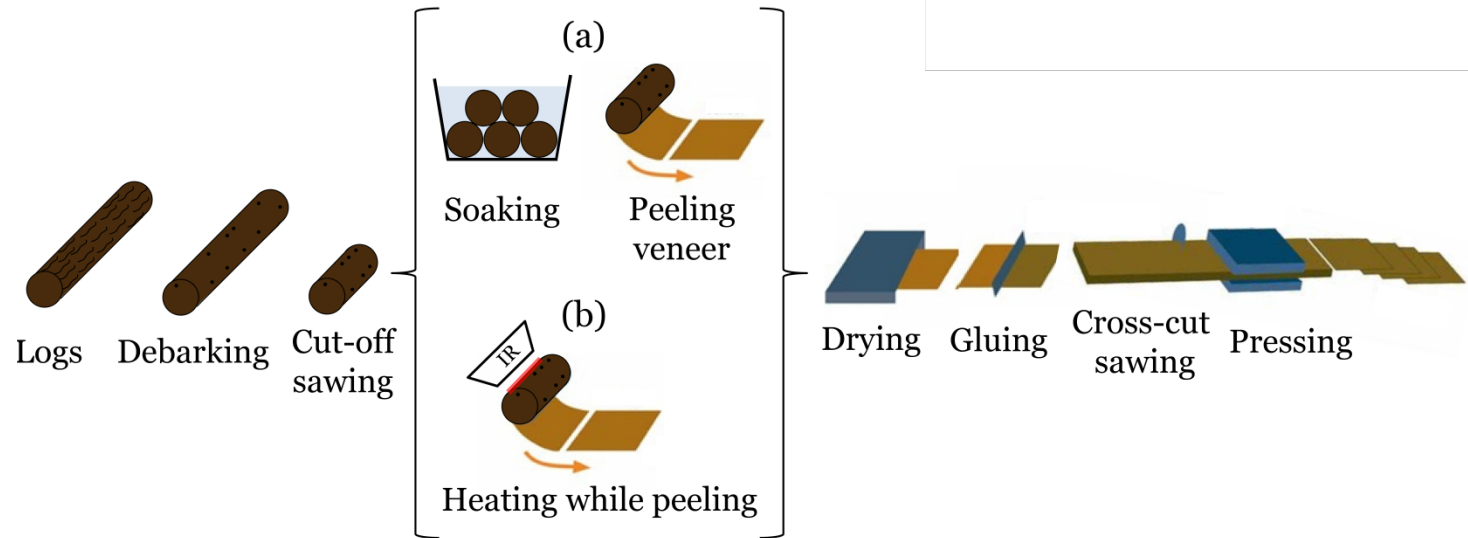
Fig.1. Test set-up

Credits : Anna Duplex

PhD thesis : Feasibility of wood peeling assisted by infrared radiation

► Peeling process: veneer production

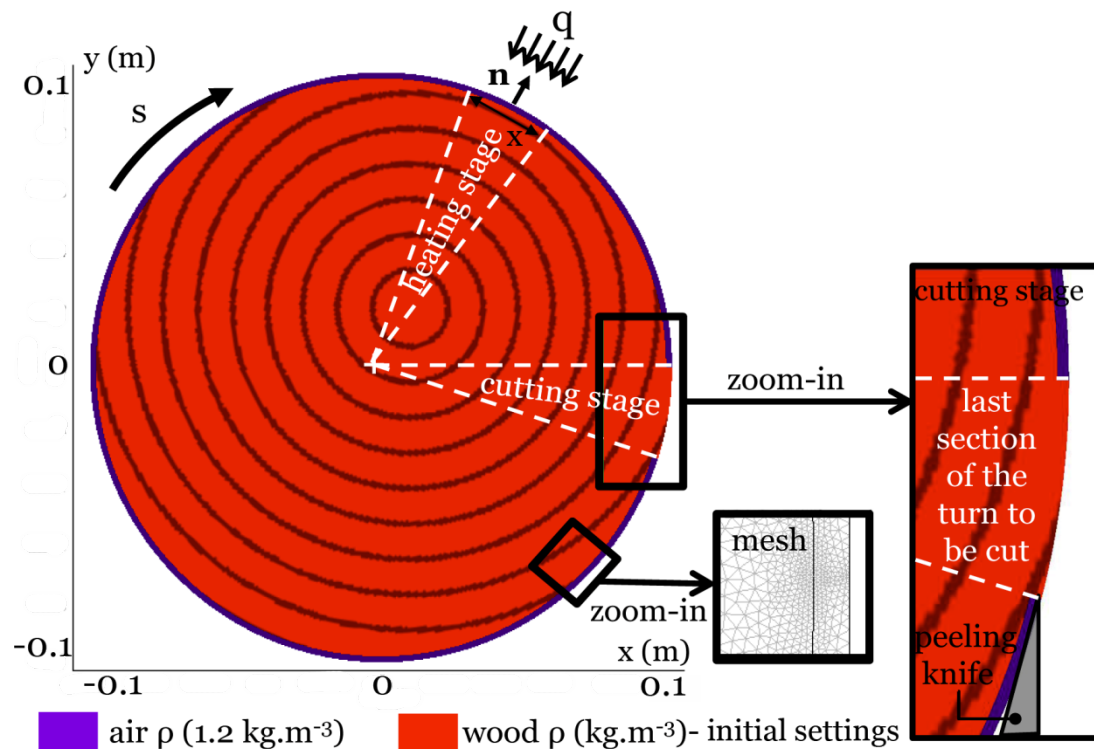
Credits : Anna Dupleix



PhD thesis : Wood kebab

- ▶ Wood is not penetrated deep and fast enough by the IR radiation

Credits : Anna Dupleix

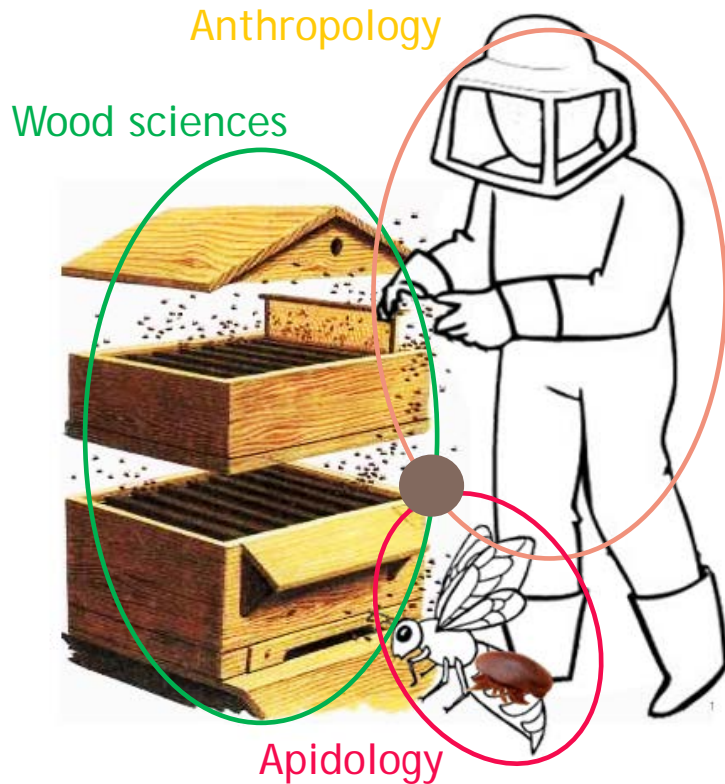


Laboratory



Laboratoire de Mécanique et Génie Civil

- Biomechanics and wood formation
- Wood building
- Diversity of wood properties
- Uses of wood in traditional knowledge



Montpellier, France

Project : Wood for bees, which interactions?

- ▶ Honeybees have to face major problems nowadays (pesticides, *Varroa destructor*, climate change, etc.)
- ▶ Their lives are at stake and therefore humanity because of their role in pollination



Source : CNRS

- ▶ Our hypothesis is that the wood material of the hives can help them thanks to many interactions.



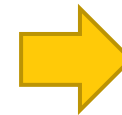
Source : pinterest.fr



Source : omafra.gov.on.ca



Source : pinterest.fr



Source : omafra.gov.on.ca

History of the project

- ▶ Traditional uses of beehives
 - In Cévennes (South of France) : chestnut trunk
 - In Finland : polystyren



Hypothesis of the project and methods of work

- ▶ Scientific hypothesis from local traditional knowledge

- 1) « Chestnut trunk beehives can lower temperature and humidity differences thanks to thickness of wood »
- 2) « Polystyrene beehive is more insulative from a thermal point of view »
- 3) « Chestnut extractives promote bees health »
- 4) « Chestnut wood is repellent to *Varroa destructor* »

- ▶ Tests on the thickness and material of beehive on (T°C, RH%) inner climate

- ▶ Tests on the effect of chestnut extractives on *Varroa destructor* and bees health

Physical approach

- Comparison of different thicknesses and wood species on inner ($T^{\circ}\text{C}$, RH%) climate



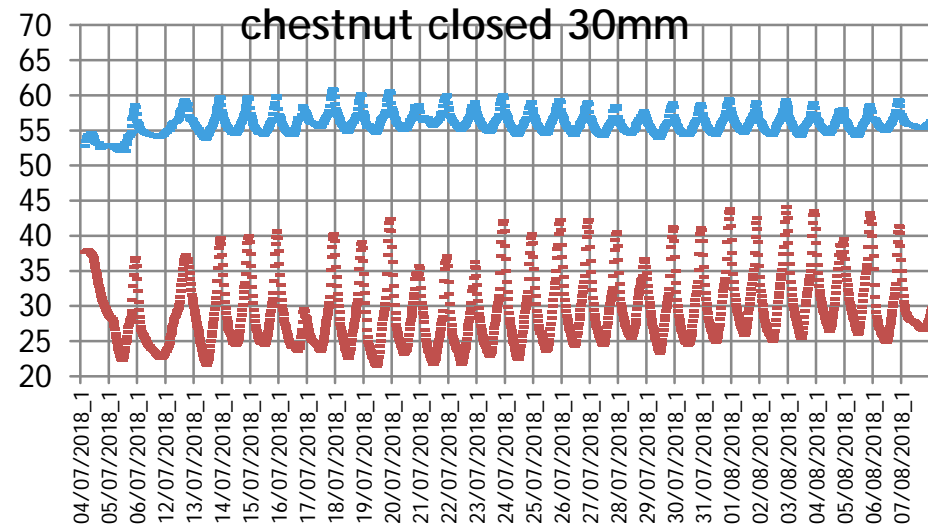
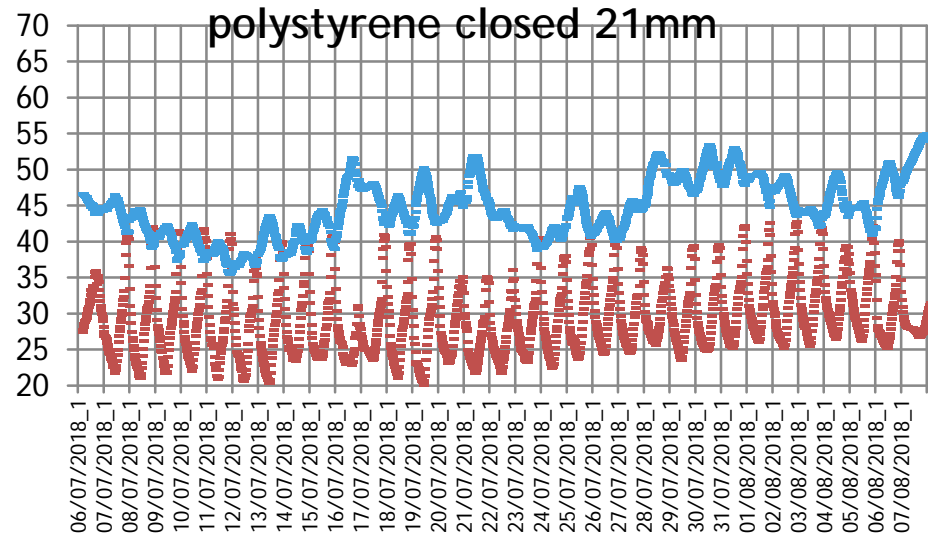
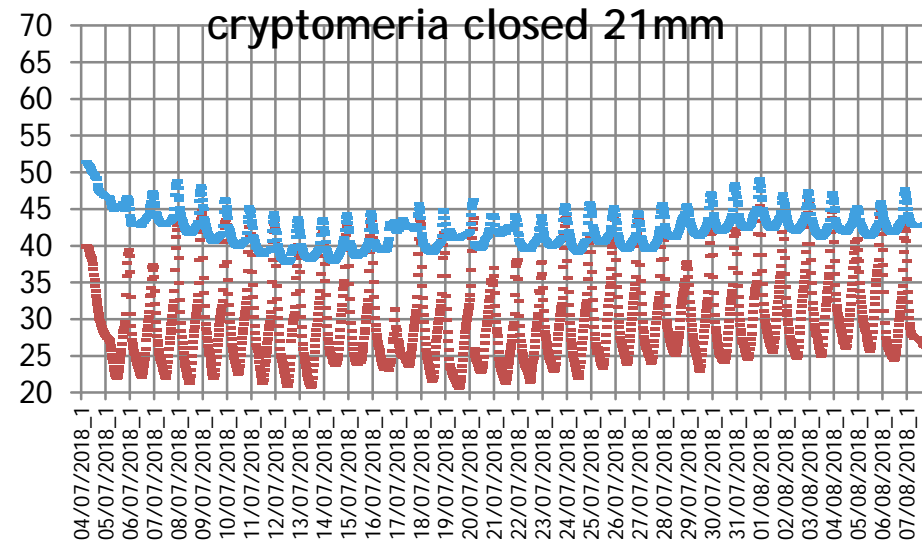
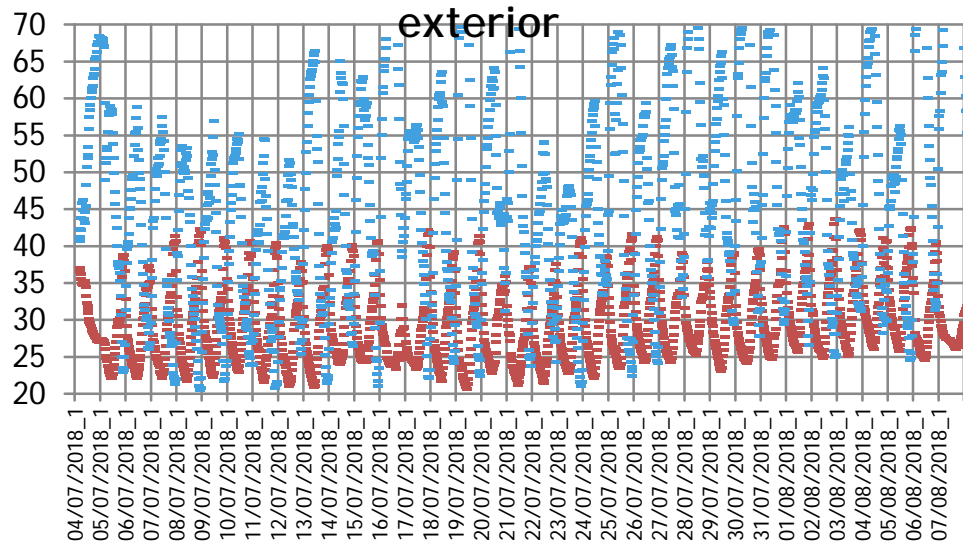
Fig. 1: Empty hives equipped with ($T^{\circ}\text{C}$, RH%) sensors



Material	Thicknesses (mm)	Open/ Closed
Chestnut	15, 21, 30 21	closed open
Cryptomeria	21	closed
Spruce	21 21	closed open
Polystyrene	21 21	closed open

First results

- Relative Humidity (%) in blue and Temperature (°C) in red



Chemical and ecological approach

- ▶ Comparison of effects on chestnut vs spruce extractives on *Varroa destructor*



Fig. 1: Chestnut extractives extraction (in gaz and in liquid forms)



Sources : Harrington

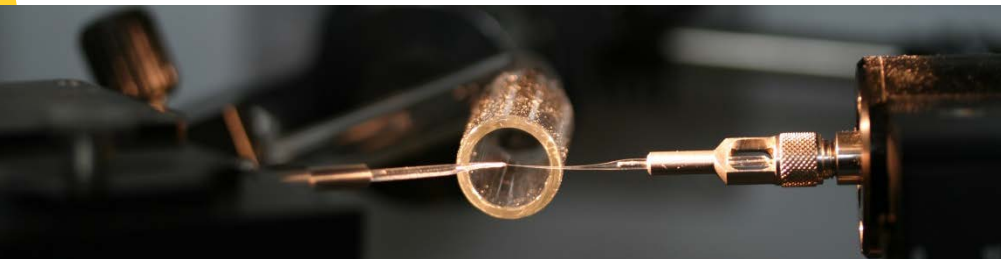


Fig. 2: Electrodes for testing olfactory sensors (located in the front leg) of *Varroa*

Social sciences

- ▶ Face to face interviews with beekeepers and beehive builders on their knowledge and perception of the wood material for the bees
- ▶ Beekeepers and beehive builders have strong knowledge on the wood material (species, properties)
- ▶ They know how to use it
- ▶ Some of them think it has an influence on the bees health (depending on their kind of beekeeping)

Development of Varroa counting



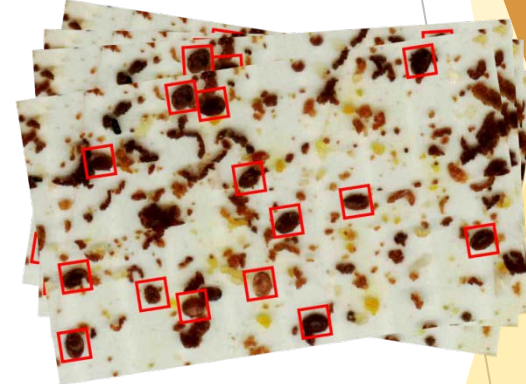
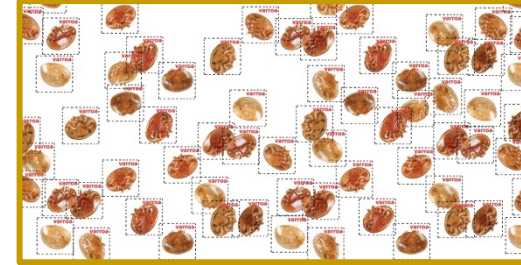
From manual to automated counting

Today

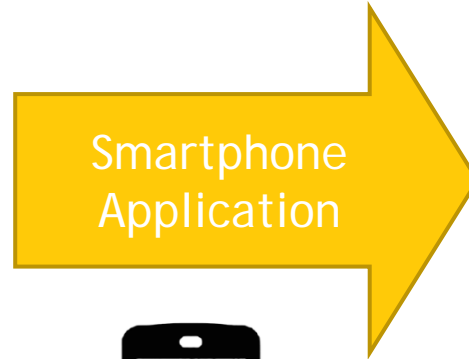


Time-consuming

Tomorrow



Algorithms based on deep-learning

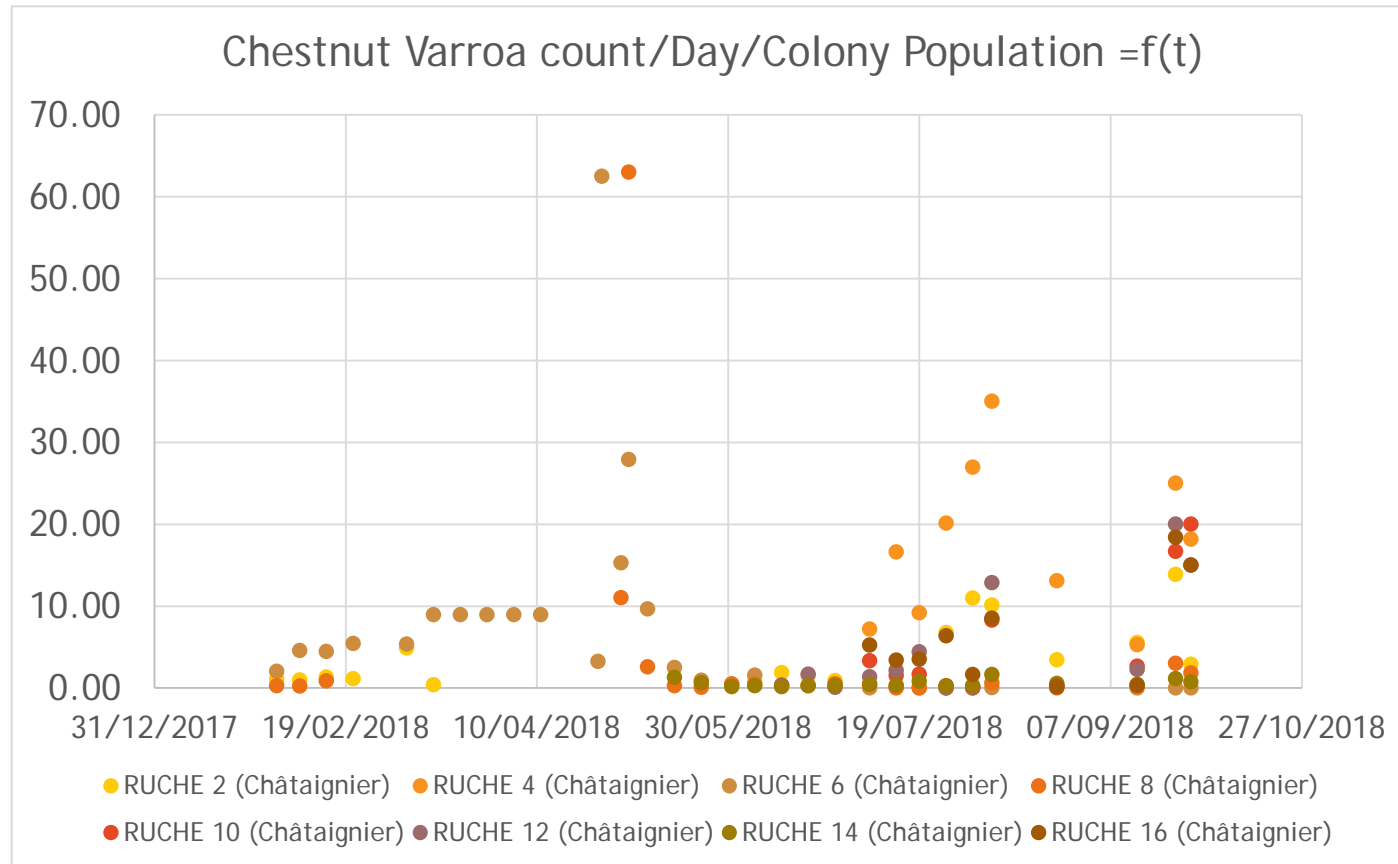


Fotonower

Connecthive

SATT
Réseau
des Sociétés d'Accélération
du Transfert de Technologies

First results of counting



Future work

- ▶ Study ($T^{\circ}\text{C}$, RH%) inside living beehives (with bees)
- ▶ Comparison of effects on chestnut vs spruce extractives on bees health
- ▶ Continue this work on bee hives in living trees



Bashkyrie/Poland



Cévennes, France



Thank you for your attention

and

Welcome to work together in
France and Iran

خوش آمدید به همکاری در فرانسه و ایران