



# Spatial analysis for the assessment of the environmental changes in the landscapes of Izmir surroundings

Polina Lemenkova

## ► To cite this version:

Polina Lemenkova. Spatial analysis for the assessment of the environmental changes in the landscapes of Izmir surroundings. 10th International Conference on Environmental, Cultural, Economic and Social Sustainability, Jan 2014, Split, Croatia. pp.31, 10.6084/m9.figshare.7435202.v1 . cel-01991180

**HAL Id: cel-01991180**

**<https://hal.science/cel-01991180>**


Submitted on 29 Jan 2019

**HAL** is a multi-disciplinary open access archive for the deposit and dissemination of scientific research documents, whether they are published or not. The documents may come from teaching and research institutions in France or abroad, or from public or private research centers.

L'archive ouverte pluridisciplinaire **HAL**, est destinée au dépôt et à la diffusion de documents scientifiques de niveau recherche, publiés ou non, émanant des établissements d'enseignement et de recherche français ou étrangers, des laboratoires publics ou privés.



Distributed under a Creative Commons CC0 - Public Domain Dedication 4.0 International License



# **Spatial analysis for the assessment of the environmental changes in the landscapes of Izmir surroundings**

**Lemenkova Polina,**

PhD student at *Institute for Environmental Studies,  
Charles University in Prague* (Czech Republic)



# Study Area

The study region is located in western Turkey, Izmir surroundings:



Western Turkey, Izmir region.  
Landscapes from the aerial  
view. Source: Google Earth



# Research problem

- The region of Izmir is a particular part of Turkey: it has unique landscapes with variety of vegetation types, diverse relief and natural reserve areas.
- The vegetation within the Aegean region has very complex character, characterized by the the variety, biogeographical diversity and richness.
- At the same time, Izmir, a third large metropolis of Turkey, is an industrial city of high importance and a key seaport harbor, strategic for the country and Mediterranean region.
- Therefore, the region has strong anthropogenic pressure: well developed transport network, intensive shipping and maritime constructions, industrial factories, plants, densely populated urban districts, intensive agricultural cultivation.

# Research Questions and Goals

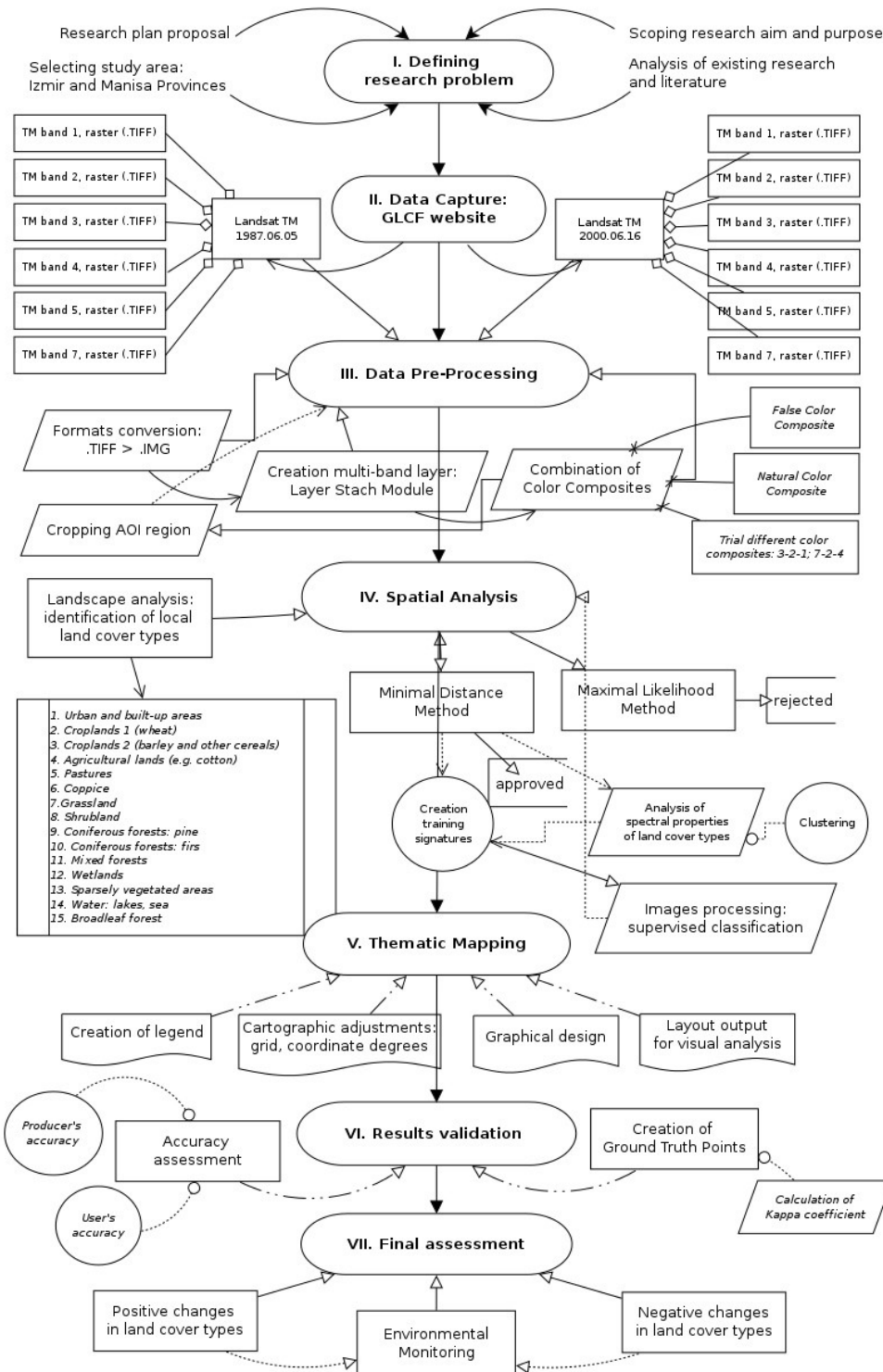
- How (if) the landscapes within the test area of Izmir region have changes due to the anthropogenic effects in the given time scope of 13 years (1987-2000) ? - **Visualize (Map it)**.
- If there are changes, what are the exact areas (in *ha* or *km*) occupied by every land cover type.  
- **Calculate & Assess Accuracy**.
- How can remote sensing (RS) data and GIS tools of Erdas Imagine be used for answering questions (1) and (2). - **Demonstrate & Discuss**.



# Methods

- Data import and conversion
- Creating multi-band layer & color composite
- Selecting AOI (Area Of Interest)
- Clustering segmentation and classification
- GIS Mapping
- Verification via Google Earth
- Accuracy Assessment
- Analyzing results

# METHODOLOGICAL FLOWCHART





# I. Data Import

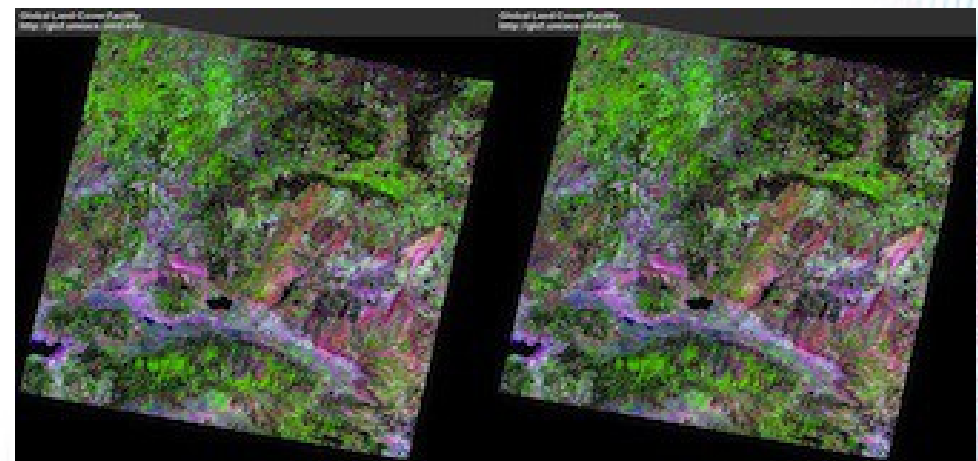
Selecting study area covered by Landsat TM scenes on the GLCF website :

**Landsat Thematic Mapper (TM):**  
Global Land Cover Facility (GLCF)  
Earth Science Data Interface

For selecting the target area,  
a spatial mask of coordinates ranging  
from 26°00'–26°00' E to 38°00'–39°00'N was applied.  
The target images were chosen on 1987 and 2000 year.

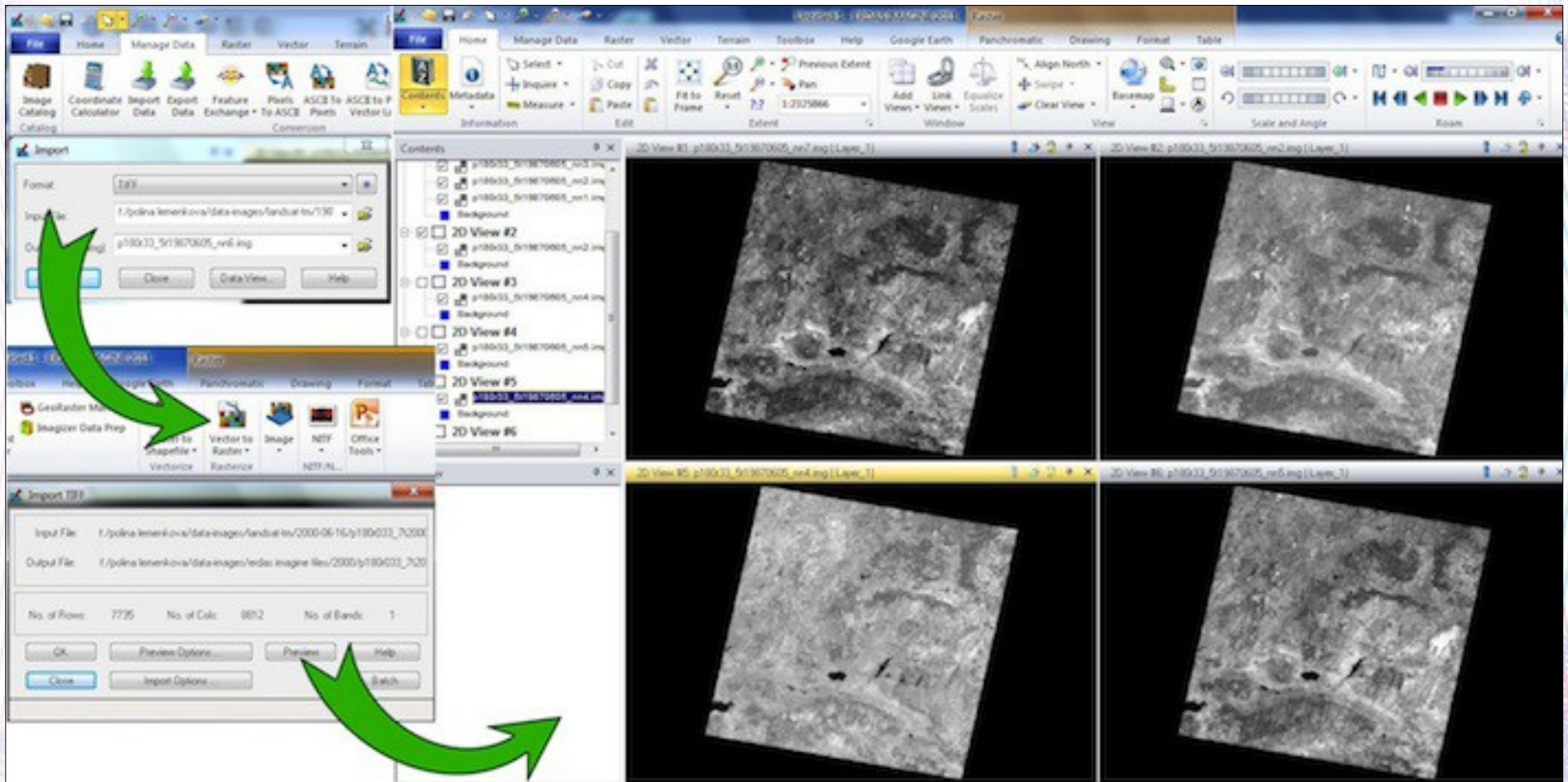
**Two images:**

- have a time span of 13-years (1987-2000)  
(change detection in land cover types)
- taken during summer (June):  
Analysis of vegetation types





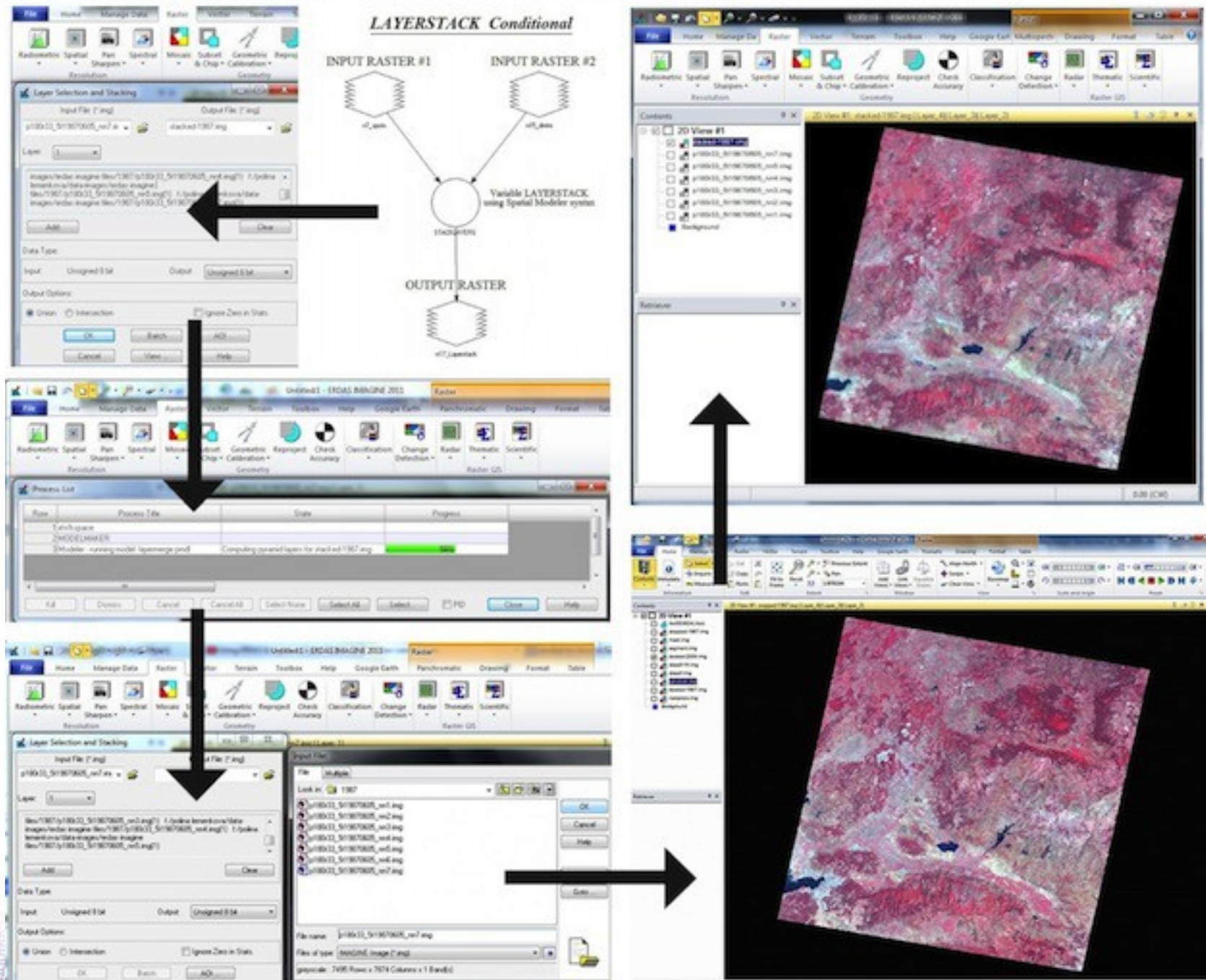
## II. Data Conversion



Conversion of raw .TIFF Landsat TM images into Erdas Imagine “.img” format.



# III. Creating multi-band color composite



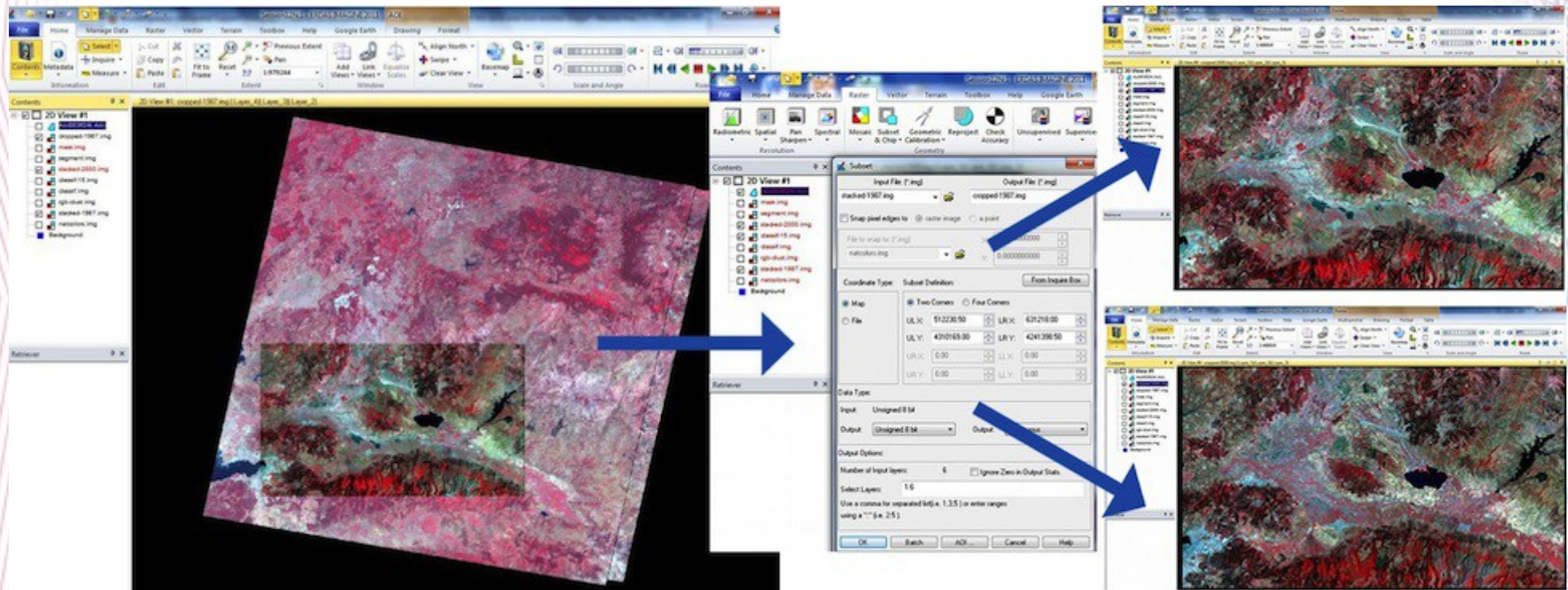


## IV. Test area: Izmir surroundings

- To illustrate ecological diversity, the chosen test area Manisa and Izmir provinces covers all types of the landscapes :
- *urban built-up areas, narrow coastal zone, agricultural crop areas and hilly landscapes.*
- The urban areas located on the coastal area of the Aegean Sea with ~ 4 million people
- People have impact on the environment (demographic, cultural & economic pressure).
- This is reflected in the environment: land cover types, landscapes patterns, heterogeneity.



# IV. Selecting AOI (Area Of Interest)



**Left:** Selecting AOI area from the overlapping initial Landsat images.

**Center:** adjusting parameters, Erdas Imagine.

**Right:** AOI 1987 (above) and AOI 2000 (below).



# V. Clustering segmentation

- The logical algorithmic approach of clustering segmentation consists in merging pixels on the images into clusters.
- Grouping pixels is based on the assessment of their homogeneity / distinguishability from the neighboring pixel elements.
- Clusters enable to analyze spectral & textural characteristics of the land cover types,(i.e. to perform spatial analysis.
- Accurate cluster segmentation of the images is an important step for supervised classification.

# V. Differentiating patterns via DNs

- The image classification = assignation of all pixels into land cover classes in this study area.
- Classification is done using multispectral data, spectral pattern (signatures) of the pixels that represent land cover classes.
- Various land cover types and landscape features are detected using individual properties of digital umbers (DNs) of the pixels.
- The DNs show values of the spectral reflectance of the land cover features, and individual properties of the objects.

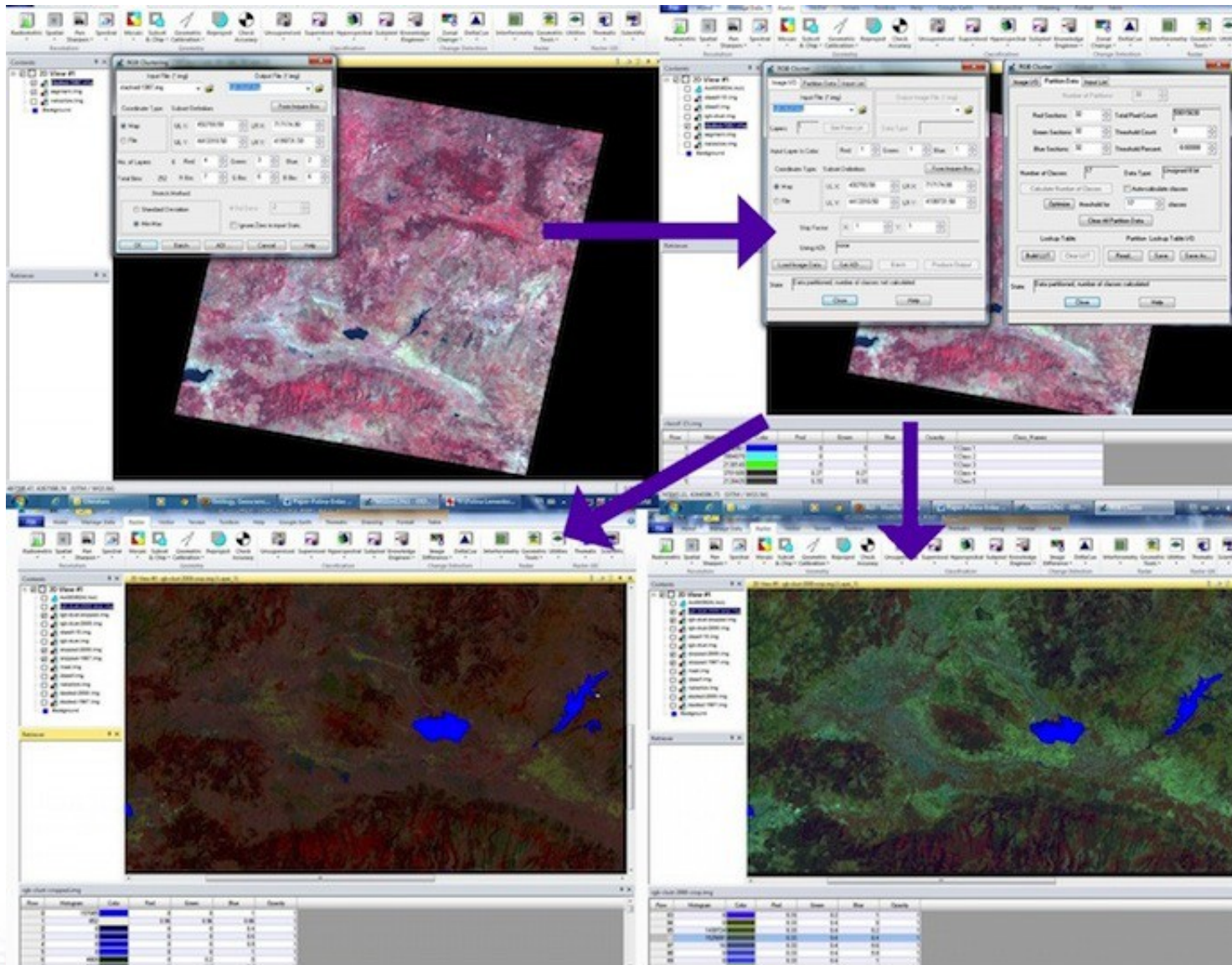


# V. Clustering: the procedure

- Clustering was performed to classify pixels into thematic groups, or clusters.
- The Nr. of clusters = 15, which responds to the selected land cover types in the study area.
- During clustering, each digital pixel on the image is categorized to the respecting cluster, to which the mean DN value of the given pixel is the closest.
- The process is repeated in an iterative way, until optimal values of the class groups and the pixels assigned to the corresponding classes are reached.
- Afterwards, the land cover types were visually assessed and identified for each land cover class.



# V. Clustering (visualization)





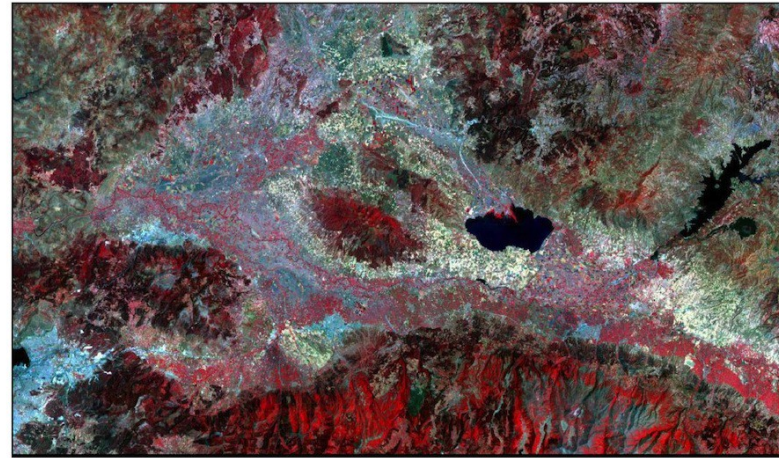
## VI. Mapping

- Final thematic mapping is based on the results of the image classification:  
visualizing landscape structure and land cover in the study area.
- Final thematic maps are represented on the following two slides.



LAND COVER TYPES IN PROVINCES MANISA AND IZMIR, WESTERN TURKEY.  
Supervised classification applied to Landsat TM image, 2000.

1. Landsat TM initial image



Final map:

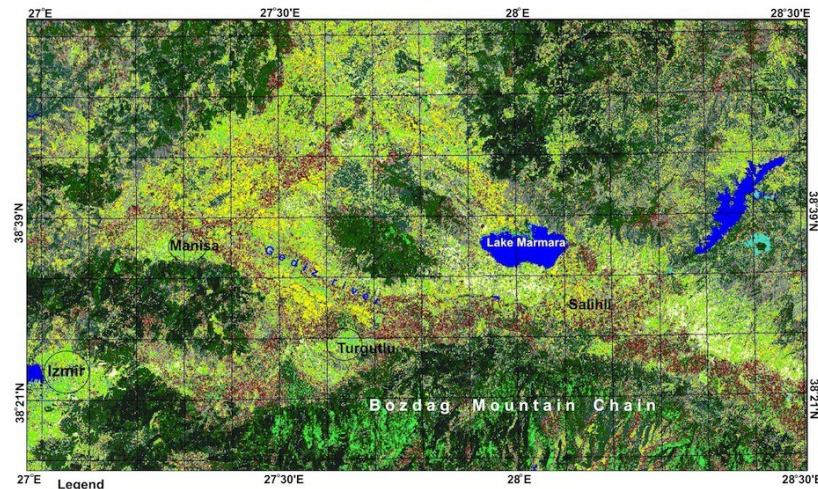
1) classified Landsat  
TM 1987 image

(above)

and

2) thematic map of  
land cover types  
(below).

2. Thematic map of land cover types



class-mnl-2000.img						
Row	Histogram	Color	Red	Green	Blue	Opacity
8	27721		0.25098	0.878431	0.815686	1/Wetlands
12	131027		0	0	1	1/Water
4	197360		0.39	0.76	0.87	1/Urban areas
14	263646		1	1	0.678431	1/Pastures
16	1710519		0.55	0.58	0.55	1/Broadleaf forests
18	350603		0.73	0.57	0.63	1/Shrubland
19	92596		1	1	0	1/Agricultural lands (cotton, etc)
13	1711126		0	0.392157	0	1/Coniferous forest (green)
2	795422		0.64	0.77	0.67	1/Grasslands
11	850331		0.647053	0.164706	0.164706	1/Croplands 2 (barley, cereals)
10	1137767		0.15	0.38	0.34	1/Sparce vegetated areas
6	134658		0.21	0.31	0.07	1/Croplands
7	921977		0.12	0.15	0.15	1/Coniferous forests (fir)
5	242800		0.06	0.94	0.44	1/Mixed forests
17	643684		0.498039	1	0	1/Croplands 1 (wheat)

Auxiliary technical data:

Initial data: Landsat TM image  
acquired on 2000.06.16 by EarthSat.  
WRS-2, Path 180, Row 033.  
Distributed by GLCF in GeoTIFF.

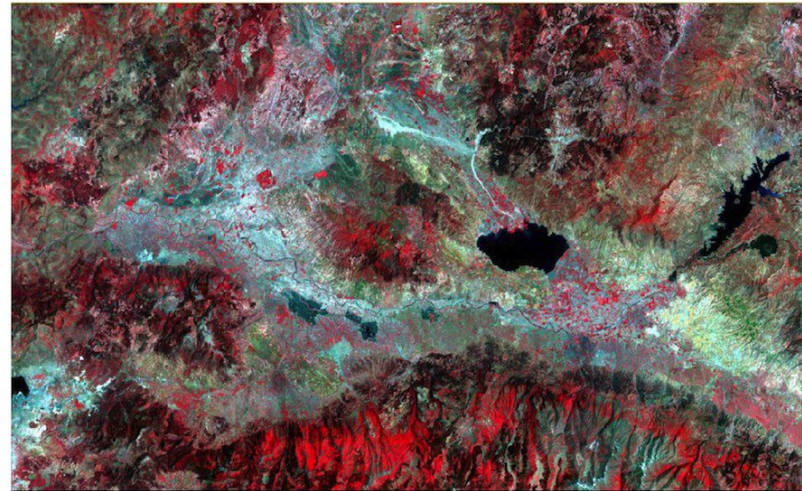
Classification type:  
Supervised classification,  
Minimal Distance method

Land cover classes: 15 types  
Area: Izmir and Manisa provinces,  
western Turkey.



LAND COVER TYPES IN PROVINCES MANISA AND IZMIR, WESTERN TURKEY.  
Supervised classification applied to Landsat TM image, 1987.

1. Landsat TM initial image

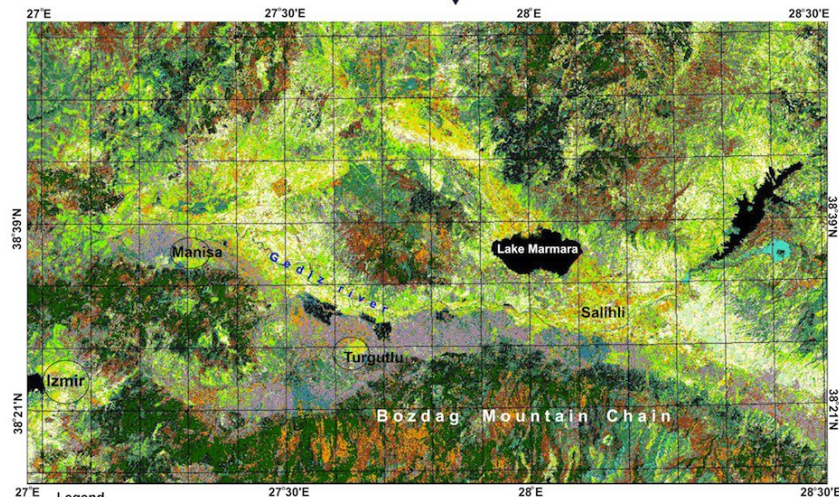


Final map:

1) classified Landsat  
TM 2000 image  
(above)  
and

2) thematic map of  
land cover types  
(below).

2. Thematic map of land cover types



Legend

Row	Histogram	Color	Red	Green	Blue	Opacity	Class_Names
6	51041		0.25	0.88	0.82		1) Wetlands
1	148687		0	0	0		1) Water
18	185250		0.17	0.57	0.62		1) Sparsely vegetated areas
14	24344		0.82	0.71	0.95		1) Agricultural lands (cotton, etc)
4	1443590		0.51	0.62	0.53		1) Urban areas
17	1260254		0.69	0.61	0.67		1) Shrubland
12	815377		1	1	0.88		1) Pastures
5	749421		0	0.39	0		1) Mixed forests
13	220975		0.8	0.94	0.76		1) Cropland 2 (barley, cereals)
3	411879		1	0.65	0		1) Grasslands
9	458425		1	0.84	0		1) Cropland 1 (wheat)
11	1098062		0.16	0.56	0.38		1) Cropland
15	1253627		0.63	0.32	0.18		1) Coniferous forest (pines)
10	871502		0.12	0.15	0.15		1) Coniferous forest (fir)
7	1098429		0.5	1	0		1) Broadleaf forests

Auxiliary technical data:

Initial data: Landsat TM image  
acquired on 1987.06.05 by EarthSat.  
WRS-2, Path 180, Row 033.  
Distributed by GLCF in GeoTIFF.

Classification type:  
Supervised classification,  
Minimal Distance method

Land cover classes: 15 types  
Area: Izmir and Manisa provinces,  
western Turkey.

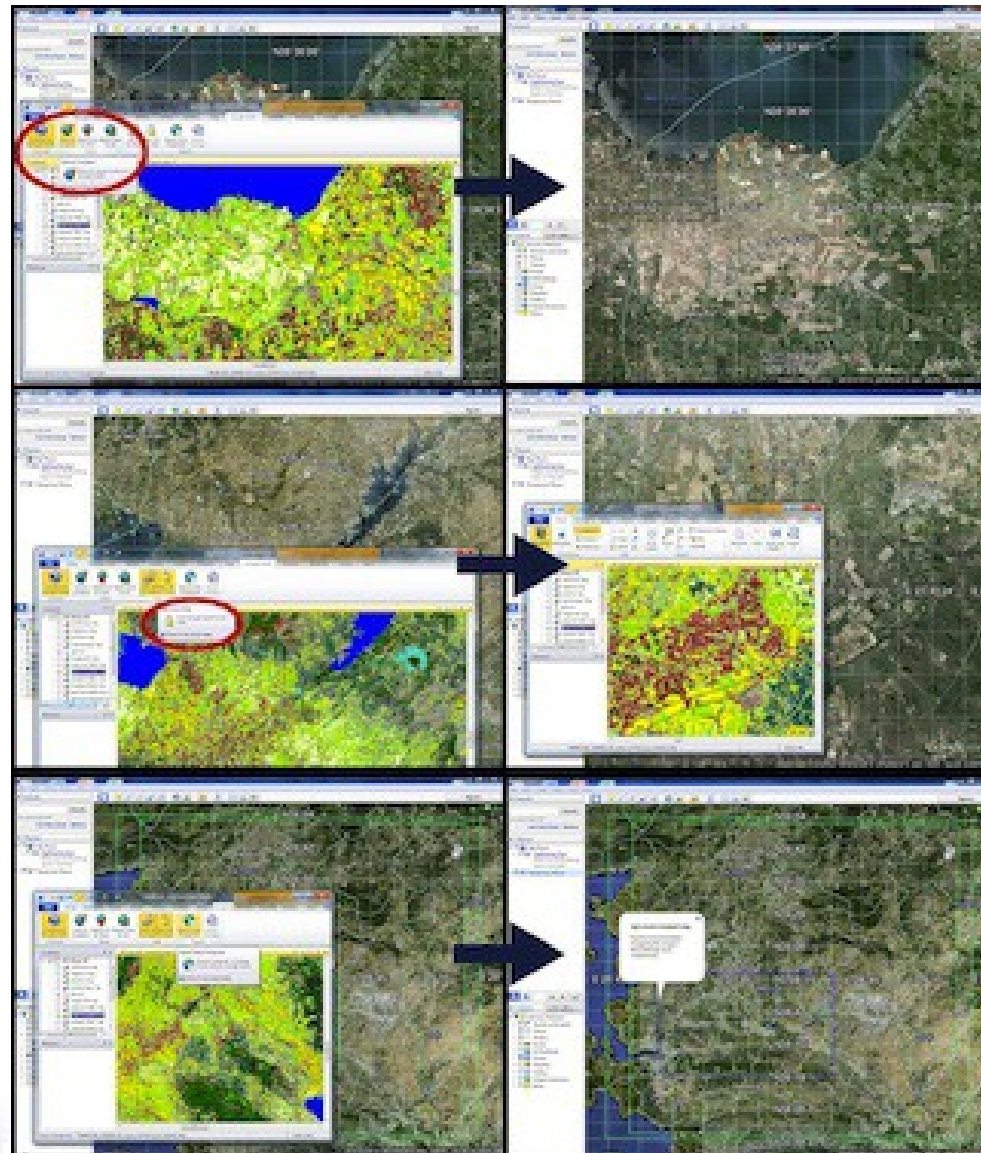


# VII. Verification via Google Earth

- The selected areas with the most diverse landscape structure and high heterogeneity of the land cover types, have been verified by the overlapping of the Google Earth aerial images.
- The function “**connect to Google Earth**” was activated that enabled to visualize the same region of the current study on the Google Earth in a simultaneous way.
- The functions “**Link Google Earth to View**” and “**Sync Google Earth to View**” enabled to synchronize the view areas between the Google Earth and the current view on the image.
- This enabled to check the difficult study areas where questions arose in which land cover type this site belongs.



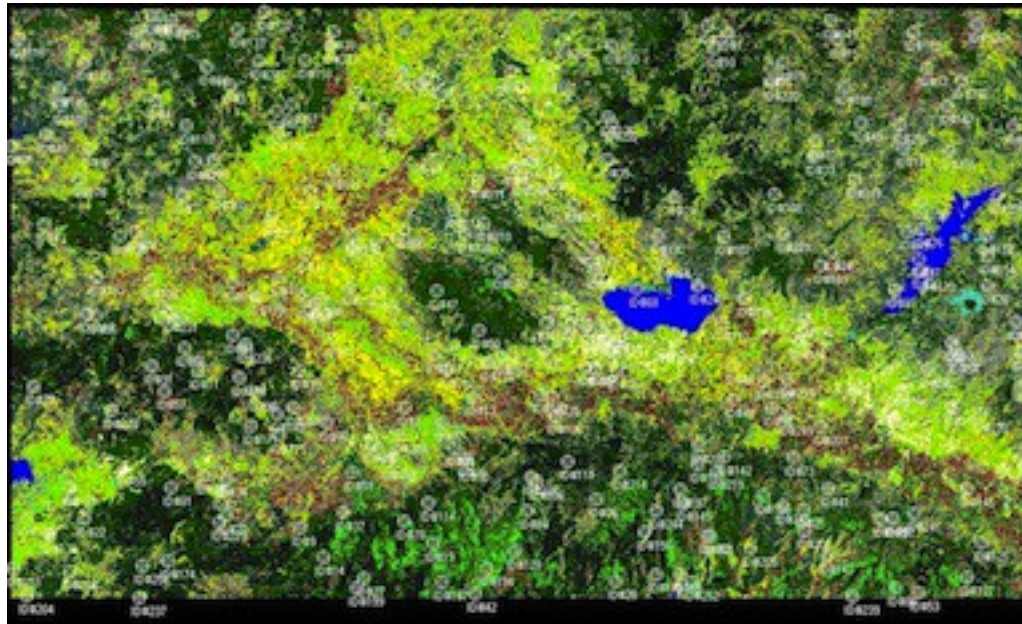
# VII. Verification via Google Earth





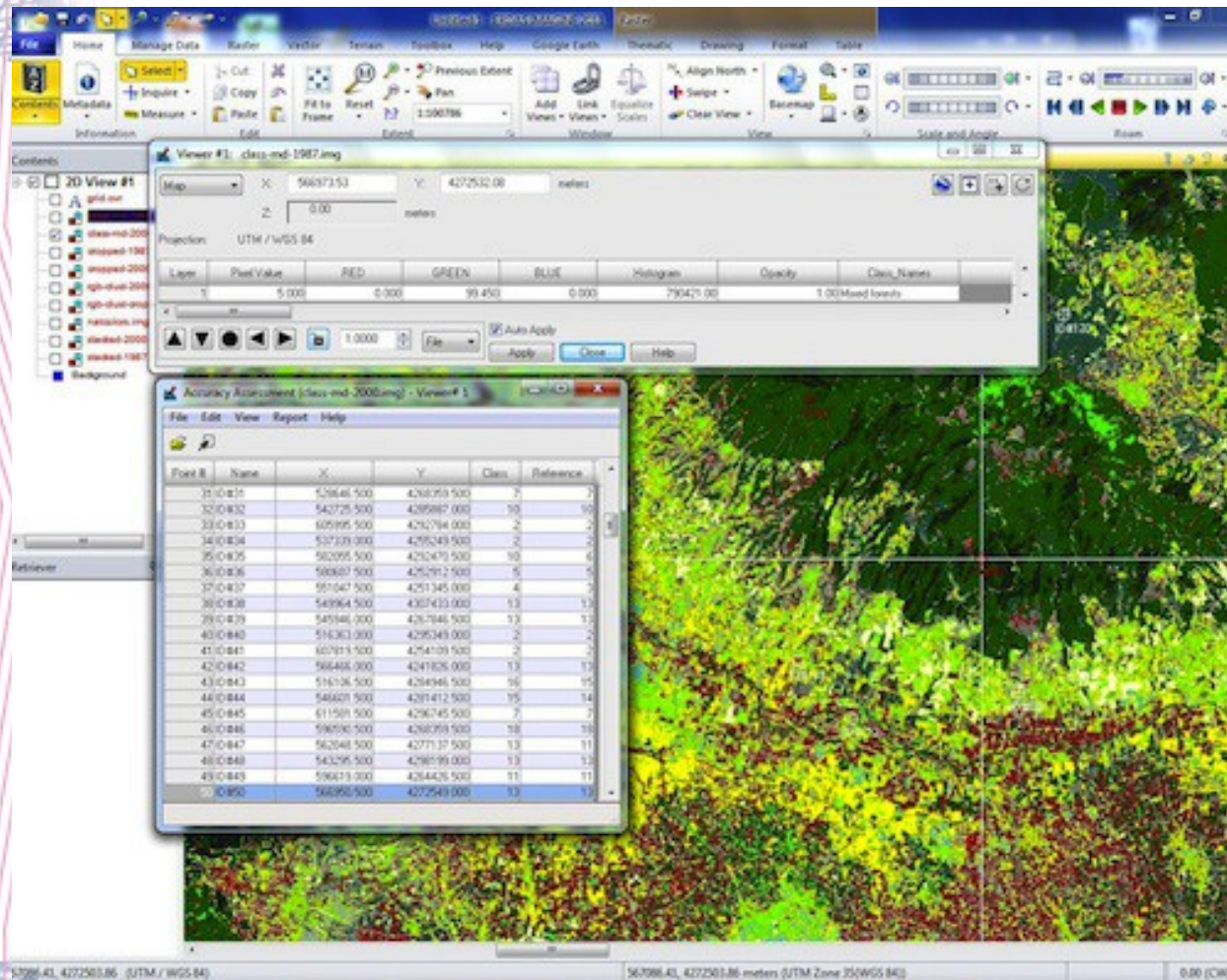
# VIII. Accuracy Assessment

The quality control and validation of the results has been performed using accuracy assessment operations in Erdas Imagine menu





# VIII. Accuracy Assessment (continue)



```

Editor (Sat 1987)ed, Dm f:\polina leonkova\data-images\ndvi\ndvi_1987\
File Edit View Find Help

CLASSIFICATION ACCURACY ASSESSMENT REPORT
-----
Image File : f:\polina leonkova\data-images\ndvi\ndvi_1987\class-md-1987
User Name : Geol
Date : Fri Jan 25 17:08:02 2002

ERROR MATRIX
-----

```

Classified Data	Unclassified	Reference Data		
		Water	Wetlands	Cropland 2
Unclassified	0	0	0	0
Water	0	2	0	0
Cropland 2	0	0	0	14
Wetlands	0	0	0	0
Cropland 1	0	0	0	0
Cropland 3	0	0	0	0
Cropland 4	0	0	0	0
Cropland 5	0	0	0	0
Cropland 6	0	0	0	0
Cropland 7	0	0	0	0
Cropland 8	0	0	0	0
Cropland 9	0	0	0	0
Cropland 10	0	0	0	0
Cropland 11	0	0	0	0
Cropland 12	0	0	0	0
Cropland 13	0	0	0	0
Cropland 14	0	0	0	0
Cropland 15	0	0	0	0
Cropland 16	0	0	0	0
Cropland 17	0	0	0	0
Cropland 18	0	0	0	0
Cropland 19	0	0	0	0
Cropland 20	0	0	0	0
Cropland 21	0	0	0	0
Cropland 22	0	0	0	0
Cropland 23	0	0	0	0
Cropland 24	0	0	0	0
Cropland 25	0	0	0	0
Cropland 26	0	0	0	0
Cropland 27	0	0	0	0
Cropland 28	0	0	0	0
Cropland 29	0	0	0	0
Cropland 30	0	0	0	0
Cropland 31	0	0	0	0
Cropland 32	0	0	0	0
Cropland 33	0	0	0	0
Cropland 34	0	0	0	0
Cropland 35	0	0	0	0
Cropland 36	0	0	0	0
Cropland 37	0	0	0	0
Cropland 38	0	0	0	0
Cropland 39	0	0	0	0
Cropland 40	0	0	0	0
Cropland 41	0	0	0	0
Cropland 42	0	0	0	0
Cropland 43	0	0	0	0
Cropland 44	0	0	0	0
Cropland 45	0	0	0	0
Cropland 46	0	0	0	0
Cropland 47	0	0	0	0
Cropland 48	0	0	0	0
Cropland 49	0	0	0	0
Cropland 50	0	0	0	0
Cropland 51	0	0	0	0
Cropland 52	0	0	0	0
Cropland 53	0	0	0	0
Cropland 54	0	0	0	0
Cropland 55	0	0	0	0
Cropland 56	0	0	0	0
Cropland 57	0	0	0	0
Cropland 58	0	0	0	0
Cropland 59	0	0	0	0
Cropland 60	0	0	0	0
Cropland 61	0	0	0	0
Cropland 62	0	0	0	0
Cropland 63	0	0	0	0
Cropland 64	0	0	0	0
Cropland 65	0	0	0	0
Cropland 66	0	0	0	0
Cropland 67	0	0	0	0
Cropland 68	0	0	0	0
Cropland 69	0	0	0	0
Cropland 70	0	0	0	0
Cropland 71	0	0	0	0
Cropland 72	0	0	0	0
Cropland 73	0	0	0	0
Cropland 74	0	0	0	0
Cropland 75	0	0	0	0
Cropland 76	0	0	0	0
Cropland 77	0	0	0	0
Cropland 78	0	0	0	0
Cropland 79	0	0	0	0
Cropland 80	0	0	0	0
Cropland 81	0	0	0	0
Cropland 82	0	0	0	0
Cropland 83	0	0	0	0
Cropland 84	0	0	0	0
Cropland 85	0	0	0	0
Cropland 86	0	0	0	0
Cropland 87	0	0	0	0
Cropland 88	0	0	0	0
Cropland 89	0	0	0	0
Cropland 90	0	0	0	0
Cropland 91	0	0	0	0
Cropland 92	0	0	0	0
Cropland 93	0	0	0	0
Cropland 94	0	0	0	0
Cropland 95	0	0	0	0
Cropland 96	0	0	0	0
Cropland 97	0	0	0	0
Cropland 98	0	0	0	0
Cropland 99	0	0	0	0
Cropland 100	0	0	0	0
Cropland 101	0	0	0	0
Cropland 102	0	0	0	0
Cropland 103	0	0	0	0
Cropland 104	0	0	0	0
Cropland 105	0	0	0	0
Cropland 106	0	0	0	0
Cropland 107	0	0	0	0
Cropland 108	0	0	0	0
Cropland 109	0	0	0	0
Cropland 110	0	0	0	0
Cropland 111	0	0	0	0
Cropland 112	0	0	0	0
Cropland 113	0	0	0	0
Cropland 114	0	0	0	0
Cropland 115	0	0	0	0
Cropland 116	0	0	0	0
Cropland 117	0	0	0	0
Cropland 118	0	0	0	0
Cropland 119	0	0	0	0
Cropland 120	0	0	0	0
Cropland 121	0	0	0	0
Cropland 122	0	0	0	0
Cropland 123	0	0	0	0
Cropland 124	0	0	0	0
Cropland 125	0	0	0	0
Cropland 126	0	0	0	0
Cropland 127	0	0	0	0
Cropland 128	0	0	0	0
Cropland 129	0	0	0	0
Cropland 130	0	0	0	0
Cropland 131	0	0	0	0
Cropland 132	0	0	0	0
Cropland 133	0	0	0	0
Cropland 134	0	0	0	0
Cropland 135	0	0	0	0
Cropland 136	0	0	0	0
Cropland 137	0	0	0	0
Cropland 138	0	0	0	0
Cropland 139	0	0	0	0
Cropland 140	0	0	0	0
Cropland 141	0	0	0	0
Cropland 142	0	0	0	0
Cropland 143	0	0	0	0
Cropland 144	0	0	0	0
Cropland 145	0	0	0	0
Cropland 146	0	0	0	0
Cropland 147	0	0	0	0
Cropland 148	0	0	0	0
Cropland 149	0	0	0	0
Cropland 150	0	0	0	0
Cropland 151	0	0	0	0
Cropland 152	0	0	0	0
Cropland 153	0	0	0	0
Cropland 154	0	0	0	0
Cropland 155	0	0	0	0
Cropland 156	0	0	0	0
Cropland 157	0	0	0	0
Cropland 158	0	0	0	0
Cropland 159	0	0	0	0
Cropland 160	0	0	0	0
Cropland 161	0	0	0	0
Cropland 162	0	0	0	0
Cropland 163	0	0	0	0
Cropland 164	0	0	0	0
Cropland 165	0	0	0	0
Cropland 166	0	0	0	0
Cropland 167	0	0	0	0
Cropland 168	0	0	0	0
Cropland 169	0	0	0	0
Cropland 170	0	0	0	0
Cropland 171	0	0	0	0
Cropland 172	0	0	0	0
Cropland 173	0	0	0	0
Cropland 174	0	0	0	0
Cropland 175	0	0	0	0
Cropland 176	0	0	0	0
Cropland 177	0	0	0	0
Cropland 178	0	0	0	0
Cropland 179	0	0	0	0
Cropland 180	0	0	0	0
Cropland 181	0	0	0	0
Cropland 182	0	0	0	0
Cropland 183	0	0	0	0
Cropland 184	0	0	0	0
Cropland 185	0	0	0	0
Cropland 186	0	0	0	0
Cropland 187	0	0	0	0
Cropland 188	0	0	0	0
Cropland 189	0	0	0	0
Cropland 190	0	0	0	0
Cropland 191	0	0	0	0
Cropland 192	0	0	0	0
Cropland 193	0	0	0	0
Cropland 194	0	0	0	0
Cropland 195	0	0	0	0
Cropland 196	0	0	0	0
Cropland 197	0	0	0	0
Cropland 198	0	0	0	0
Cropland 199	0	0	0	0
Cropland 200	0	0	0	0
Cropland 201	0	0	0	0
Cropland 202	0	0	0	0
Cropland 203	0	0	0	0
Cropland 204	0	0	0	0
Cropland 205	0	0	0	0
Cropland 206	0	0	0	0
Cropland 207	0	0	0	0
Cropland 208	0	0	0	0
Cropland 209	0	0	0	0
Cropland 210	0	0	0	0
Cropland 211	0	0	0	0
Cropland 212	0	0	0	0
Cropland 213	0	0	0	0
Cropland 214	0	0	0	0
Cropland 215	0	0	0	0
Cropland 216	0	0	0	0
Cropland 217	0	0	0	0
Cropland 218	0	0	0	0
Cropland 219	0	0	0	0
Cropland 220	0	0	0	0
Cropland 221	0	0	0	0
Cropland 222	0	0	0	0
Cropland 223	0	0	0	0
Cropland 224	0	0	0	0
Cropland 225	0	0	0	0
Cropland 226	0	0	0	0
Cropland 227	0	0	0	0
Cropland 228	0	0	0	0
Cropland 229	0	0	0	0
Cropland 230	0	0	0	0
Cropland 231	0	0	0	0
Cropland 232	0	0	0	0
Cropland 233	0	0	0	0
Cropland 234	0	0	0	0
Cropland 235	0	0	0	0
Cropland 236	0	0	0	0
Cropland 237	0	0	0	0
Cropland 238	0	0	0	0
Cropland 239	0	0	0	0
Cropland 240	0	0	0	0
Cropland 241	0	0	0	0
Cropland 242	0	0	0	0
Cropland 243	0	0	0	0
Cropland 244	0	0	0	0
Cropland 245	0	0	0	0
Cropland 246	0	0	0	0
Cropland 247	0	0	0	0
Cropland 248	0	0	0	0
Cropland 249	0	0	0	0
Cropland 250	0	0	0	0
Cropland 251	0	0	0	0
Cropland 252	0	0	0	0
Cropland 253	0	0	0	0
Cropland 254	0	0	0	0
Cropland 255	0	0	0	0
Cropland 256	0	0	0	0
Cropland 257	0	0	0	0
Cropland 258	0	0	0	0
Cropland 259	0	0	0	0
Cropland 260	0	0	0	0
Cropland 261	0	0	0	0
Cropland 262	0	0	0	0
Cropland 263	0	0	0	0
Cropland 264	0	0	0	0
Cropland 265	0	0	0	0
Cropland 266	0	0	0	0
Cropland 267	0	0	0	0
Cropland 268	0	0	0	0
Cropland 269	0	0	0	0
Cropland 270	0	0	0	0
Cropland 271	0	0	0	0
Cropland 272	0	0	0	0
Cropland 273	0	0	0	0
Cropland 274	0	0	0	0
Cropland 275	0	0	0	0
Cropland 276	0	0	0	0
Cropland 277	0	0	0	0
Cropland 278	0	0	0	0
Cropland 279	0	0	0	0
Cropland 280	0	0	0	0
Cropland 281	0	0	0	0
Cropland 282	0	0	0	0
Cropland 283	0	0	0	0
Cropland 284	0	0	0	0
Cropland 285	0	0	0	0
Cropland 286	0	0	0	0
Cropland 287	0	0	0	0
Cropland 288	0	0	0	0
Cropland 289	0	0	0	0
Cropland 290	0	0	0	0
Cropland 291	0	0	0	0
Cropland 292	0	0	0	0
Cropland 293	0	0	0	0
Cropland 294	0	0	0	0
Cropland 295	0	0	0	0
Cropland 296	0	0	0	



# Accuracy Assessment: Final Calculations

## ACCURACY TOTALS

Class Name	Reference Totals	Classified Totals	Number Correct	Producers Accuracy	Users Accuracy
Unclassified	0	0	0	---	---
Water	3	2	2	66.67%	100.00%
	2	0	0	---	---
Cropland 2 (bar	18	14	14	77.78%	100.00%
Sparsely vegeta	42	41	39	92.86%	95.12%
Mixed forests	30	27	27	90.00%	100.00%
Wetlands	5	1	1	20.00%	100.00%
Broadleaf fores	29	31	26	89.66%	83.87%
Cropland 1 (whe	9	5	5	55.56%	100.00%
	4	0	0	---	---
Coniferous fore	21	23	19	90.48%	82.61%
Coppice	25	23	21	84.00%	91.30%
Pastures	21	18	18	85.71%	100.00%
Grasslands	6	2	2	33.33%	100.00%
Agricultural la	5	2	2	40.00%	100.00%
Coniferous fore	34	34	31	91.18%	91.18%
	1	0	0	---	---
Shrubland	1	28	1	100.00%	3.57%
Urban areas	0	5	0	---	---
Totals	256	256	208		

Overall Classification Accuracy = 81.25%

----- End of Accuracy Totals -----

## KAPPA (K^) STATISTICS

Overall Kappa Statistics = 0.7923

Conditional Kappa for each Category.

Class Name	Kappa
Unclassified	0.0000
Water	1.0000
	0.0000
Cropland 2 (barley, cereals)	1.0000
Sparsely vegetated areas	0.9416
Mixed forests	1.0000
Wetlands	1.0000
Broadleaf forests	0.8181
Cropland 1 (wheat)	1.0000
	0.0000
Coniferous forest (firs)	0.8105
Coppice	0.9036
Pastures	1.0000
Grasslands	1.0000
Agricultural lands (cotton, etc)	1.0000
Coniferous forest (pines)	0.8983
	0.0000
Shrubland	0.0319
Urban areas	0.0000

----- End of Kappa Statistics -----

## ACCURACY TOTALS

Class Name	Reference Totals	Classified Totals	Number Correct	Producers Accuracy	Users Accuracy
Unclassified	0	0	0	---	---
	3	0	0	---	---
Grasslands	23	25	20	86.96%	80.00%
	5	0	0	---	---
Urban areas	9	8	7	77.78%	87.50%
Coniferous fore	10	13	9	90.00%	69.23%
Coppice	4	3	3	75.00%	100.00%
Coniferous fore	23	19	18	78.26%	94.74%
Wetlands	3	1	0	0.00%	0.00%
	6	0	0	---	---
Croplands 1 (wh	25	30	24	96.00%	80.00%
Croplands 2 (ba	17	17	14	82.35%	82.35%
Water	7	6	4	57.14%	66.67%
Mixed forests	32	41	31	96.88%	75.61%
Agricultural la	16	10	10	62.50%	100.00%
Pastures	18	19	14	77.78%	73.68%
Sparsely vegeta	42	46	40	95.24%	86.96%
Broadleaf fores	10	14	9	90.00%	64.29%
Shrubland	3	4	3	100.00%	75.00%
Totals	256	256	206		

Overall Classification Accuracy = 80.47%

----- End of Accuracy Totals -----

## KAPPA (K^) STATISTICS

Overall Kappa Statistics = 0.7843

Conditional Kappa for each Category.

Class Name	Kappa
Unclassified	0.0000
	0.0000
Grasslands	0.7803
	0.0000
Urban areas	0.8704
Coniferous forest (pines)	0.6798
Coppice	1.0000
Coniferous forests (firs)	0.9422
Wetlands	0.0119
	0.0000
Croplands 1 (wheat)	0.7784
Croplands 2 (barley, cereals)	0.8110
Water	0.6573
Mixed forests	0.7213
Agricultural lands (cotton, etc)	1.0000
Pastures	0.7169
Sparsely vegetated areas	0.8440
Broadleaf forests	0.6283
Shrubland	0.7470

----- End of Kappa Statistics -----

Classification of Landsat TM image, 1987.

Classification of Landsat TM image, 2000.



# Accuracy Results

- Accuracy results are computed as follows:
- The classification of the image 1987 was done with accuracy 81.25%,
- For the year 2000 – 80,47%.
- Kappa statistics shows following results:
- 0.7843 for the Landsat TM image 2000, and
- 0.7923 for the Landsat TM image 1987.

Land Cover Class	No pixels, 1987	No of pixels, 2000	Area(ha), 1987	Area (ha), 2000
Grasslands	411879	795422	2141	4134
Urban areas	1443590	1797360	7504	9342
Coniferous forest (pines)	1253627	1711708	6516	8898
Coniferous forests (firs)	871502	921977	4530	4793
Coppice	1058062	134659	5500	700
Wetlands	51041	27721	265	144
Croplands 1 (wheat)	458425	643684	2382	3345
Croplands 2 (barley, cereals)	220975	850931	1149	4423
Mixed forests	790421	242800	4109	1262
Agricultural lands (cotton, etc)	24344	925968	127	4813
Pastures	815377	283646	4238	1474
Sparsely vegetated areas	165250	1137789	859	5914
Broadleaf forests	1716519	1098428	8923	5710
Shrubland	1260254	350603	6550	1822



# Explanation of Table

- The results indicate changes in land cover types affected by human activities, i.e. **increased** agricultural areas. For example, :
  - - in 1987 croplands (wheat) covered 71% of the today's area (2000): 2382 vs. 3345 ha.
  - - increase in barley cropland areas is noticeable as well: 1149 ha in 1987 vs. 4423 ha in 2000.
- Sparsely vegetated areas now also occupy more areas : 5914 ha in 2000 against 859 ha in 1987.
- The natural vegetation, **decreased**, which can be explained by the expansion of the agricultural lands:
  - in 1987 coppice areas covered 5500 ha while later on there are only 700 ha in this land type.

# Conclusions

- ✓ The increased human activities (agricultural works, city spread and industrialization) affect environment, cause negative impacts on the ecosystems and make changes in vegetation coverage (land cover types).
- ✓ Climate change also affect land cover types, since there is a trend towards decrease of woody vegetation, which was typical earlier for these latitudes.
- ✓ As proven by various authors whose research papers were reviewed and discussed in the current work, drastic land use changes have been recorded and detected in diverse regions of Turkey, including coastal areas of Izmir surroundings.



# Résumé

- ✓ Monitoring land cover changes is necessary for maintaining environmental sustainability in the region. For this, up-to-date information and spatial analysis is a necessary tools.
- ✓ The paper aimed to demonstrate how landscapes changed in the selected study area at a 13-year time span (1987-2000).
- ✓ The data included Landsat imagery covering research area. The image processing was done by classification methods.
- ✓ The classification results detected changes in landscapes in 2000 comparing to 1987. This proved anthropogenic impacts on the landscapes which affect sustainable environmental development of the region.
- ✓ The results demonstrated successful combination of the RS data and methods of GIS spatial analysis ,effective for monitoring of highly heterogeneous landscapes in the area of intensive anthropogenic activities.



# Acknowledgements

- Current research has been supported by the **TÜBİTAK**: Türkiye Bilimsel ve Teknoloji Arastırma Kurumu  
(The Scientific and Technological Research Council of Turkey) Research Fellowship for Foreign Citizens, No. 2216 for 2012.
- The research stay was done during 11-12.2012 at Ege University, Faculty of Geography, Izmir, Turkey.

# Literature (the most important authors)

- Alrababah M.A., & Alhamad M.N. (2006) Land use/cover classification of arid and semi-arid Mediterranean landscapes using Landsat ETM. *International Journal of Remote Sensing*, 27 (13), 2703-2718.
- Ataberk E., and Baykal F. (2011). Utilization of natural and cultural resources of Dikili (Izmir) for tourism. *Procedia Social and Behavioral Sciences* 19, 173–180.
- Baskent E.Z., Kadiogullari A.I. (2007). Spatial and temporal dynamics of land use pattern in Turkey: A case study in Inegol. *Landscape and Urban Planning* 81, 316– 327.
- Benedetti R., Rossini P. & Taddei R. (1994) Vegetation classification in the Middle Mediterranean area by satellite data. *International Journal of Remote Sensing* 15 (3).
- Burak S., Dogan E., Gazioglu, C. (2004) Impact of urbanization and tourism on coastal environment. *Ocean & Coastal Management* 47, 515–527.
- Efe, R. (2000). The impact of land use changes on natural vegetation along the coastal zone between Edremit and Kucukkuyu. In: *International Symposium on Desertification, Turkey*, Proceedings, pp. 222–227.
- Hepcan S., Hepcan C.C., Bouwma I.M., Jongman R.H.G., Özkan M.B. (2009) Ecological networks as a new approach for nature conservation in Turkey: A case study of İzmir Province. *Landscape and Urban Planning* 90, 143–154.
- Kesgin B., Nurlu E. (2009) Land cover changes on the coastal zone of Candarli Bay, Turkey using remotely sensed data. *Environmental Monitoring Assessment* 157, 89–96. DOI 10.1007/s10661-008-0517-x



**Thank you for attention.**

**Questions ?**